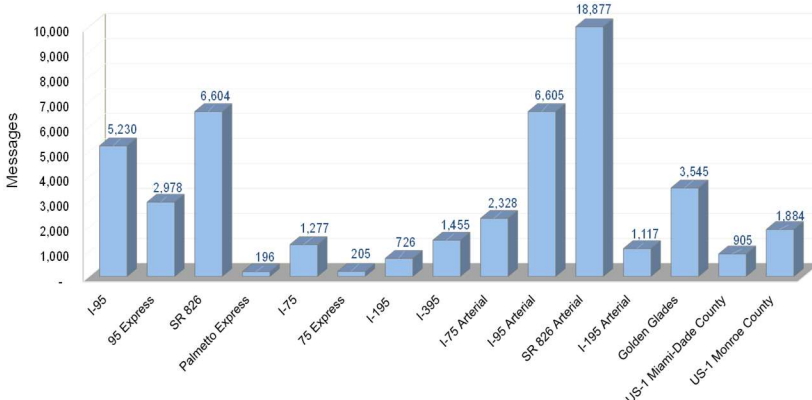


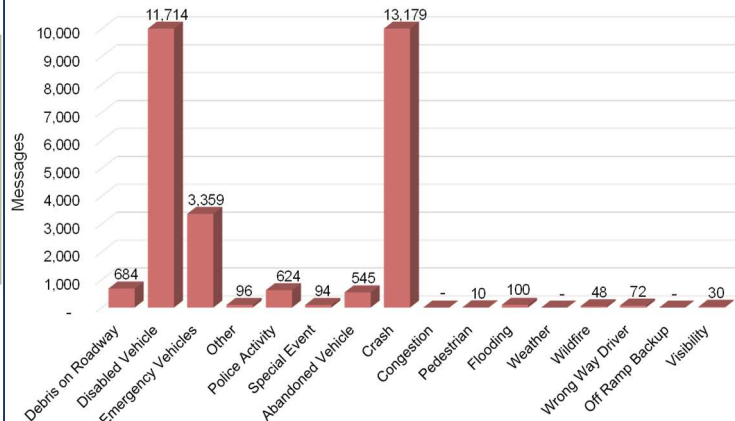
## DMS Usage Report – May 2025

### DMS Usage to Support District Six Roadways



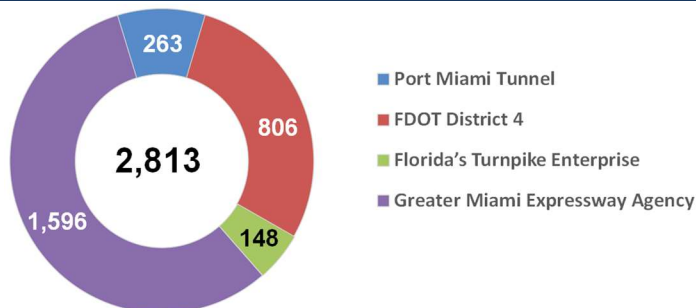
Does not include PSA/safety messages

### District Six DMS Usage by Event Type

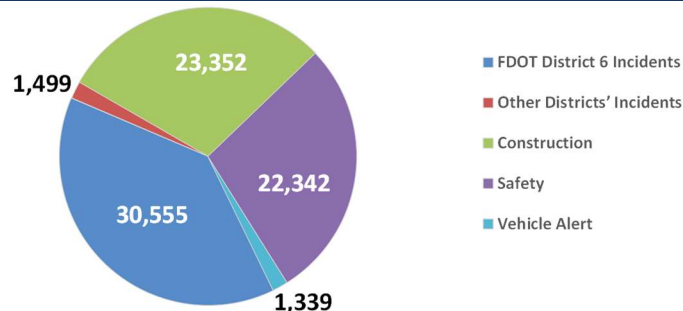


Does not include PSA/safety messages

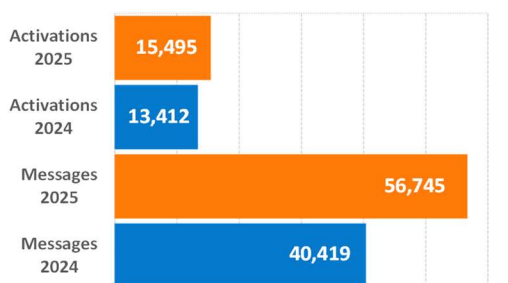
### DMS Usage to Support Other Agencies



### Total Posted DMS Messages

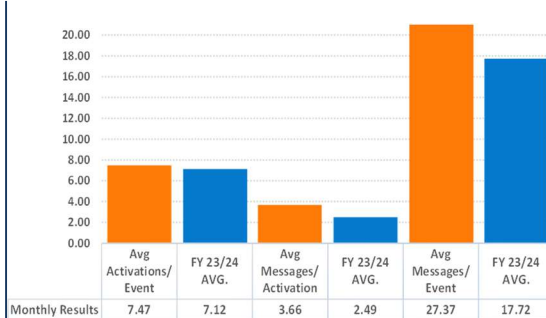


### DMS Messages and Activations

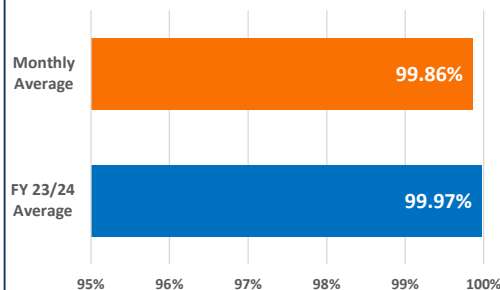


Does not include PSA/safety messages

### DMS Average Performance

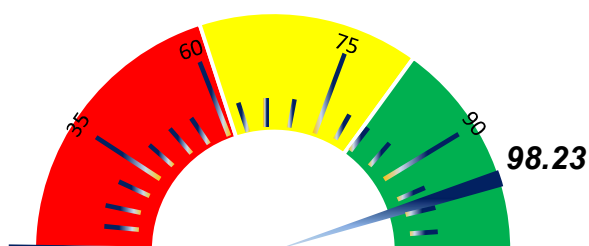


### DMS Efficiency



As of June 1, 2021, the value from DMS Efficiency is generated from randomized sampling for lane blockage events.

### Average DMS Monthly Availability (%)



### Top Two Safety Messages of the Month

Total Publications: 1,851

**DON'T TEXT AND DRIVE  
BE RESPONSIBLE**

Total Publications: 1,429

**SIGNAL BEFORE  
CHANGING LANES**

**DMS Usage by Roadway (Limited Access Facilities)**

Roadway	ID	Location	# of Activations	# of Messages	Duration (hr:mm:ss)	Availability
<b>I-95 MAINLINE</b>	1	I-95 NB beyond NW 103 St	244	931	628:07:02	100.00%
	22*	I-95 NB south of NW 62 St	0	0	0:00:00	N/A
	75**	I-95 NB before SR 112	260	772	478:16:12	N/A
	77*	I-95 NB beyond SW 8 St	359	1085	1357:54:32	N/A
	2	I-95 SB north of Ives Dairy Rd	308	914	617:14:26	100.00%
	3	I-95 SB north of Miami Gardens Dr	310	964	913:14:59	100.00%
	095NB013.5LL	I-95 NB north of NW 173 St	98	392	417:26:39	100.00%
	20*	I-95 SB south of NW 119 St	59	199	213:38:39	N/A
	21*	I-95 SB south of NW 62 St	0	0	0:00:00	N/A
	74**	I-95 SB beyond SR 112	207	669	1040:05:51	N/A
	76*	I-95 SB before Rickenbacker Cswy	23	44	68:10:15	N/A
<b>I-95 MAINLINE SUBTOTAL</b>			<b>1868</b>	<b>5970</b>	<b>5734:08:35</b>	<b>100.00%</b>
<b>95 EXPRESS</b>	95XNB40	95X NB at NW 62 St	163	546	287:43:39	100.00%
	95XNB45	95X NB at NW 125 St	212	768	474:45:51	99.48%
	95XSB45	95X SB at NW 62 St	174	493	611:13:23	99.74%
	95XSB50	95X SB at NW 125 St	132	306	553:37:08	99.47%
	095SB014.6-EL	95X SB at Miami Gardens Dr	307	851	872:08:14	99.87%
	095NB014.8-EL	95X NB north of Miami Gardens Dr	60	201	204:09:24	100.00%
<b>95 EXPRESS SUBTOTAL</b>			<b>1048</b>	<b>3165</b>	<b>3003:37:39</b>	<b>99.76%</b>
<b>SR 826 &amp; PALMETTO EXPRESS</b>	4	SR 826 EB east of NW 67 Ave	114	830	608:39:45	100.00%
	5	SR 826 EB east of NW 37 Ave	337	1183	1092:10:21	100.00%
	826NB014.38	SR 826 NB beyond NW 122 St	108	771	469:25:39	100.00%
	15 <sup>†</sup>	SR 826 WB beyond NW 17 Ave	53	131	504:26:01	N/A
	17	SR 826 WB beyond NW 47 Ave	103	338	1325:37:10	100.00%
	19	SR 826 WB beyond NW 67 Ave	205	753	1422:15:07	100.00%
	826NB010.36	SR 826 NB before NW 58 St	152	513	1026:42:08	100.00%
	826SB013.74 <sup>††</sup>	SR 826 SB before NW 103 St	0	0	0:00:00	N/A
	826SB014.41 <sup>††</sup>	SR 826 SB north of NW 122 St	200	709	1409:51:10	N/A
	826SB10.99	SR 826 SB before NW 58 St	92	203	44:55:21	100.00%
	826NB008.48	SR 826 NB at NW 25 St	138	510	993:15:32	100.00%
	826ELSB010.84	SR 826 SB at NW 66 St	92	159	98:38:31	99.96%
	826ELNB013.55	SR 826 NB at NW 108 St	24	37	86:15:01	99.96%
	826NB001.3-LL	SR 826 NB before SW 72 St	81	220	105:24:09	99.96%
	826NB004.8-LL	SR 826 NB at SW 24 St	227	645	1185:46:38	100.00%
	826SB008.8-LL	SR 826 SB at NW 36 St	170	414	330:57:56	100.00%
<b>SR 826 SUBTOTAL</b>			<b>2096</b>	<b>7416</b>	<b>10704:20:29</b>	<b>99.99%</b>
<b>I-75 &amp; 75 EXPRESS</b>	075NB002.68	I-75 NB before Miami Gardens Dr	18	37	66:14:54	100.00%
	075NB001.32	I-75 AT NW 89 Ave	21	46	67:00:57	100.00%
	075SB001.29	I-75 SB ramp from NW 138 St	210	1228	1308:18:42	100.00%
	075SB000.4-EL	I-75 SB before HEFT	63	205	538:54:28	90.85%
	075SB004.1-LL <sup>††</sup>	I-75 SB South of Miami Gardens Dr	202	1107	1369:07:13	74.34%
<b>I-75 SUBTOTAL</b>			<b>514</b>	<b>2623</b>	<b>3349:36:14</b>	<b>93.04%</b>
<b>I-195 MAINLINE</b>	57	I-195 EB before North Miami Ave	30	82	296:35:05	100.00%
	105*	I-195 WB before Alton Rd	196	662	788:36:36	N/A
<b>I-195 MAINLINE SUBTOTAL</b>			<b>226</b>	<b>744</b>	<b>1085:11:41</b>	<b>100.00%</b>
<b>I-395</b>	886WB	Port Blvd WB before US 1	261	754	966:42:27	100.00%
	104**	I-395 WB at Watson Island	357	1063	1061:52:17	N/A
<b>I-395 SUBTOTAL</b>			<b>618</b>	<b>1817</b>	<b>2028:34:44</b>	<b>100.00%</b>
<b>LIMITED ACCESS FACILITIES SUBTOTAL</b>			<b>6370</b>	<b>21735</b>	<b>25905:29:22</b>	<b>98.79%</b>

**DMS Usage by Roadway (Arterials)**

Roadway	ID	Location	# of Activations	# of Messages	Duration (hr:mm:ss)	Availability
<b>I-95 ARTERIAL</b>	109	Ives Dairy Rd EB before I-95	203	669	504:21:23	99.27%
	113	Ives Dairy Rd WB before I-95	200	661	508:06:34	100.00%
	110	Miami Gardens Dr EB before I-95	240	848	812:13:28	99.10%
	111	Miami Gardens Dr WB before I-95	246	860	813:25:07	99.07%
	112	NW 103 St EB before I-95	305	1107	737:06:58	100.00%
	106	NW 79 St EB before I-95	338	1143	778:44:13	100.00%
	107	NW 54 St EB before I-95	349	1068	732:58:21	99.87%
	108 <sup>††</sup>	SW 8 St EB before I-95	176	553	672:30:29	82.33%
<b>I-95 ARTERIAL SUBTOTAL</b>			<b>2057</b>	<b>6909</b>	<b>5559:26:33</b>	<b>97.46%</b>
<b>GOLDEN GLADES INTERCHANGE</b>	6 <sup>†</sup>	SR 826 WB west of NE 2 Ave	335	1239	1098:42:38	N/A
	7 <sup>*</sup>	Turnpike SB to Golden Glades	302	979	841:00:17	N/A
	9 <sup>†</sup>	US 441 NB at Tri-Rail	108	358	315:45:18	N/A
	10 <sup>†</sup>	SR 9 NB before Park & Ride	108	376	324:15:29	N/A
	8 <sup>*</sup>	US 441 SB at NW 179 St	245	836	806:13:15	N/A
<b>GOLDEN GLADES INTERCHANGE SUBTOTAL</b>			<b>1098</b>	<b>3788</b>	<b>3385:56:57</b>	<b>0.00%</b>
<b>SR 826 ARTERIAL</b>	SW24EB	SW 24 St EB before SR 826	175	505	967:52:39	100.00%
	SW24WB	SW 24 St WB before SR 826	175	507	967:52:43	100.00%
	SW40EB	SW 40 St EB before SR 826	121	323	122:44:12	100.00%
	SW40WB	SW 40 St WB before SR 826	119	320	122:33:53	100.00%
	SW56EB	SW 56 St EB before SR 826	102	281	114:12:39	100.00%
	SW56WB	SW 56 St WB before SR 826	102	281	114:12:44	100.00%
	SW72EB	SW 72 St EB before SR 826	90	259	110:09:42	100.00%
	SW72WB	SW 72 St WB before SR 826	75	239	46:48:39	97.67%
	SR968EB	W Flagler St EB before SR 826	156	421	908:27:13	100.00%
	SR968WB*	W Flagler St WB before SR 826	156	421	908:27:09	N/A
	NW25EB*	NW 25 St EB before SR 826	81	203	224:18:16	N/A
	NW25WB*	NW 25 St WB before SR 826	190	543	587:14:39	N/A
	NW36EB*	NW 36 St EB before SR 826	194	567	585:22:56	N/A
	NW36WB	NW 36 St WB before SR 826	197	573	588:00:58	100.00%
	SW8EB	SW 8 St EB before SR 826	178	512	964:35:58	99.95%
	SW8WB	SW 8 St WB before SR 826	178	512	964:23:23	100.00%
	SW88EB*	Kendall Dr EB before SR 826	62	184	36:04:11	N/A
	SW88WB*	Kendall Dr WB before SR 826	62	184	36:04:08	N/A
	ADMS-103ST-EB <sup>†</sup>	NW 103 St EB before SR 826	141	671	756:47:43	67.38%
	ADMS-103ST-WB <sup>‡</sup>	NW 103 St WB before SR 826	167	777	872:13:49	77.39%
	ADMS-122ST-EB	NW 122 St EB before SR 826	236	1259	1365:27:43	99.70%
	ADMS-122ST-WB	NW 122 St WB before SR 826	237	1289	1427:37:10	100.00%
	ADMS-154ST-EB	NW 154 St EB before SR 826	211	1221	1309:15:50	100.00%
	ADMS-154ST-WB	NW 154 St WB before SR 826	211	1223	1309:26:19	100.00%
	ADMS-58ST-WB	NW 58 St WB before SR 826	222	627	997:54:47	96.57%
	ADMS-74ST-EB	NW 74 St EB before SR 826	205	1018	1516:09:56	99.94%
	ADMS-74ST-WB	NW 74 St WB before SR 826	221	1039	1579:27:32	99.94%
	ADMS-US27-EB	US 27 EB before SR 826	197	938	1049:23:16	90.44%
	ADMS-US27-WB	US 27 WB before SR 826	225	1076	1266:21:40	100.00%
<b>SR 826 ARTERIAL SUBTOTAL</b>			<b>4686</b>	<b>17973</b>	<b>21819:31:47</b>	<b>96.91%</b>

Roadway	ID	Location	# of Activations	# of Messages	Duration (hr:mm:ss)	Availability
<b>I-195 ARTERIAL</b>	38	Alton Rd SB before I-195	123	385	179:05:05	99.66%
	39	Arthur Godfrey WB before I-195	106	361	116:03:56	99.93%
	40	Alton Rd NB before I-195	108	371	116:19:59	99.89%
<b>I-195 ARTERIAL SUBTOTAL</b>			<b>337</b>	<b>1117</b>	<b>411:29:00</b>	<b>99.83%</b>
<b>I-75 ARTERIAL</b>	ADMS-W80ST-NB	Hialeah Grdns Blvd NB before I-75	205	1190	1293:27:52	99.58%
	ADMS-NW138ST-EB	NW 138th St EB before I-75	204	1202	1298:02:54	100.00%
<b>I-75 ARTERIAL SUBTOTAL</b>			<b>409</b>	<b>2392</b>	<b>2591:30:46</b>	<b>99.79%</b>
<b>US 1 FROM I-95 TO BEGINNING OF HEFT</b>	23	US 1 NB beyond SW 17 Ave	247	744	840:30:17	99.49%
	45	US 1 SB before SW 80 St	22	31	67:52:33	100.00%
	47	US 1 SB at Florida's Turnpike	15	18	62:42:34	100.00%
	46	US 1 NB before Killian Dr	46	119	78:51:43	100.00%
	48	US 1 NB at Florida's Turnpike	14	17	62:41:09	99.87%
<b>US 1 FROM I-95 TO BEGINNING OF HEFT SUBTOTAL</b>			<b>344</b>	<b>929</b>	<b>1112:38:16</b>	<b>99.87%</b>
<b>US 27 OKEECHOBEE RD</b>	US27KROME-SB	US 27 SB at Krome Ave	3	16	4:34:29	100.00%
	US27NW186ST-NB	US 27 NB at NW 186 St	1	1	0:02:29	100.00%
<b>US 27 TO OKEECHOBEE RD SUBTOTAL</b>			<b>4</b>	<b>17</b>	<b>4:36:58</b>	<b>100.00%</b>
<b>US 1 SOUTH OF BEGINNING OF HEFT</b>	62	US 1 NB at Mile Marker 126	4	10	85:59:21	93.79%
	64	US 1 NB at Mile Marker 106	11	60	217:02:15	100.00%
	66	US 1 NB at Mile Marker 91.5	12	63	215:23:56	100.00%
	68	US 1 NB at Mile Marker 39.5	19	373	1056:23:33	100.00%
	71	US 1 NB at Mile Marker 7.5	33	388	1073:36:28	98.86%
	61	US 1 SB at Mile Marker 126	43	265	717:07:46	93.80%
	63	US 1 SB at Mile Marker 113	19	227	665:04:16	98.41%
	65	US 1 SB at Mile Marker 106	19	235	652:23:09	100.00%
	67	US 1 SB at Mile Marker 91.5	18	234	650:20:57	100.00%
	69	US 1 SB at Mile Marker 39.5	6	15	115:37:35	100.00%
	70	US 1 SB at Mile Marker 7.5	6	15	115:37:35	95.58%
<b>TOTAL NUMBER OF DMS</b>			<b>107</b>			
<b>US 1 SOUTH OF BEGINNING OF HEFT SUBTOTAL</b>			<b>190</b>	<b>1,885</b>	<b>5564:36:51</b>	<b>98.22%</b>
<b>ARTERIALS SUBTOTAL</b>			<b>9,125</b>	<b>35,010</b>	<b>40449:47:08</b>	<b>97.92%</b>
<b>LIMITED ACCESS FACILITIES SUBTOTAL</b>			<b>6,370</b>	<b>21,735</b>	<b>25905:29:22</b>	<b>98.79%</b>
<b>GRAND TOTAL</b>			<b>15,495</b>	<b>56,745</b>	<b>66355:16:30</b>	<b>98.23%</b>

\* DMS under the ITS DMS Replacement Project. System availability is not measured for these devices.

\*\* DMS under the I-395/SR 836/I-95 Design Build Contractor. System availability is not measured for these devices.

† DMS under Golden Glades Interchange Enhancement Project. System availability is not measured for these devices.

†† DMS under SR 826/Palmetto Express Capacity Improvement Project. System availability is not measured for these devices.

‡ DMS had equipment malfunctions and repairs were made. System availability is measured for these devices.

‡‡ DMS had communication issues and repairs were made. System availability is measured for these devices.