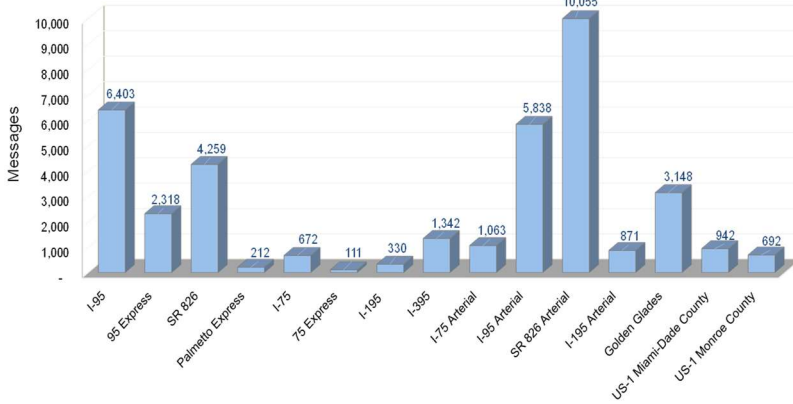


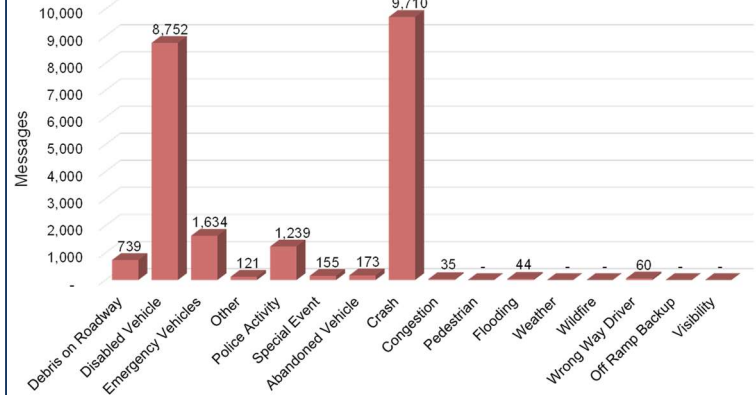
DMS Usage Report – May 2024

DMS Usage to Support District Six Roadways



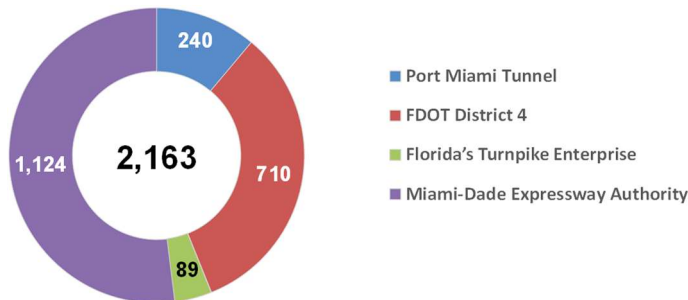
Does not include PSA/safety messages

District Six DMS Usage by Event Type

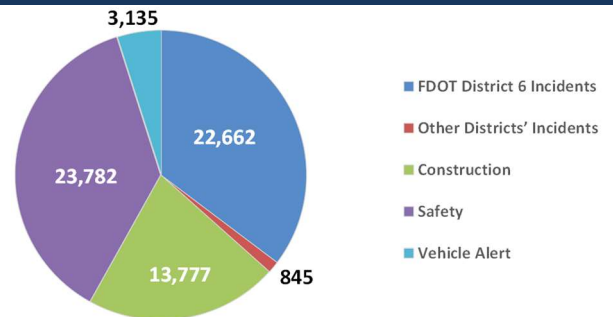


Does not include PSA/safety messages

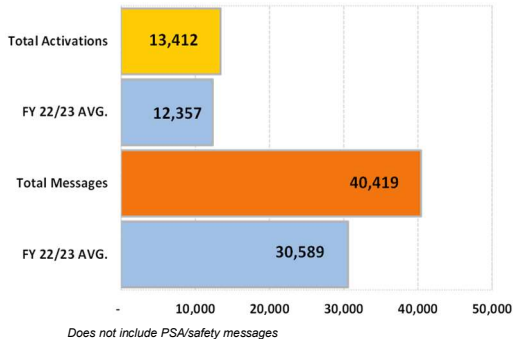
DMS Usage to Support Other Agencies



DMS Messages

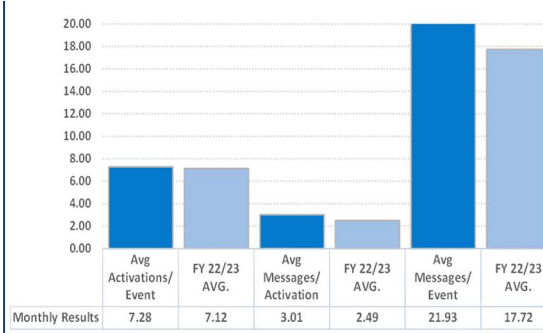


DMS Messages and Activations

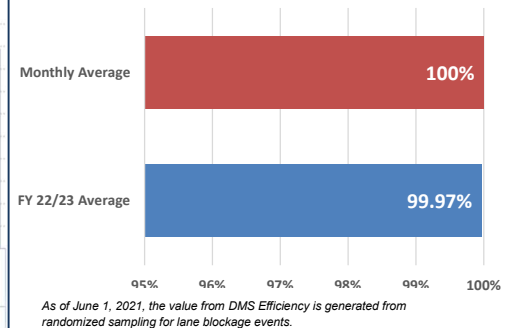


Does not include PSA/safety messages

DMS Average Performance

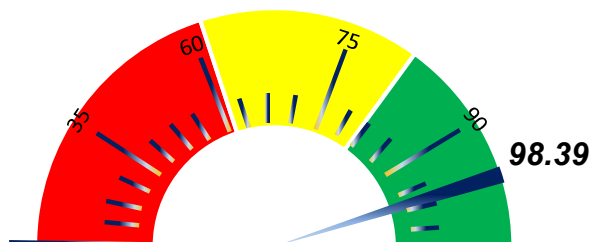


DMS Efficiency



As of June 1, 2021, the value from DMS Efficiency is generated from randomized sampling for lane blockage events.

Average DMS Monthly Availability (%)



Top Two Safety Messages of the Month

Total Publications: 1,727

**SLOWER TRAFFIC
KEEP RIGHT
IT'S THE LAW**

Total Publications: 1,315

**SEAT BELTS
SAVE LIVES**

DMS Usage by Roadway (Limited Access Facilities)

Roadway	ID	Location	# of Activations	# of Messages	Duration (hr:mm:ss)	Availability
I-95 MAINLINE	1	I-95 NB beyond NW 103 St	183	629	803:55:13	100.00%
	22	I-95 NB south of NW 62 St	174	523	579:36:59	100.00%
	75**	I-95 NB before SR 112	296	873	545:55:01	N/A
	77*	I-95 NB beyond SW 8 St	371	1078	1122:15:48	N/A
	2	I-95 SB north of Ives Dairy Rd	235	713	839:37:41	98.03%
	3	I-95 SB north of Miami Gardens Dr	240	854	836:48:03	98.04%
	095NB013.5LL	I-95 NB north of NW 173 St	93	317	504:25:59	N/A
	20	I-95 SB south of NW 119 St	150	461	512:20:05	97.93%
	21	I-95 SB south of NW 62 St	239	809	1005:45:50	100.00%
	74**	I-95 SB beyond SR 112	230	697	1027:03:38	N/A
	76*	I-95 SB before Rickenbacker Cswy	41	76	162:18:28	N/A
I-95 MAINLINE SUBTOTAL			2252	7030	7940:02:45	99.00%
95 EXPRESS	95XNB40	95X NB at NW 62 St	114	328	300:00:07	99.24%
	95XNB45	95X NB at NW 125 St	138	495	490:59:03	96.86%
	95XSB45	95X SB at NW 62 St	198	592	865:28:16	99.94%
	95XSB50	95X SB at NW 125 St	120	290	541:26:00	99.85%
	095SB014.6-EL	95X SB at Miami Gardens Dr	220	557	827:38:02	98.03%
	095NB014.8-EL	95X NB north of Miami Gardens Dr	66	202	296:55:18	98.03%
95 EXPRESS SUBTOTAL			856	2464	3322:26:46	98.66%
SR 826 & PALMETTO EXPRESS	4	SR 826 EB east of NW 67 Ave	87	200	450:05:34	99.96%
	5	SR 826 EB east of NW 37 Ave	274	902	1073:46:11	100.00%
	826NB014.38	SR 826 NB beyond NW 122 St	77	164	162:09:04	100.00%
	15 [†]	SR 826 WB beyond NW 17 Ave	62	195	292:43:09	N/A
	17	SR 826 WB beyond NW 47 Ave	115	368	1465:47:22	100.00%
	19	SR 826 WB beyond NW 67 Ave	167	625	1613:50:51	100.00%
	826NB010.36	SR 826 NB before NW 58 St	100	234	508:05:58	97.54%
	826SB013.74	SR 826 SB before NW 103 St	151	483	1169:23:55	99.96%
	826SB10.99	SR 826 SB before NW 58 St	78	184	26:27:56	100.00%
	826NB008.48	SR 826 NB at NW 25 St	107	281	548:34:18	100.00%
	826ELSB010.84	SR 826 SB at NW 66 St	81	172	155:17:06	99.78%
	826ELNB013.55	SR 826 NB at NW 108 St	28	43	138:42:46	98.27%
	826NB001.3-LL	SR 826 NB before SW 72 St	56	124	145:34:46	99.96%
	826NB004.8-LL	SR 826 NB at SW 24 St	190	512	978:37:22	99.42%
	826SB008.8-LL	SR 826 SB at NW 36 St	178	491	605:18:43	96.21%
SR 826 SUBTOTAL			1751	4978	9334:25:01	99.36%
I-75 & 75 EXPRESS	075NB002.68	I-75 NB before Miami Gardens Dr	31	47	138:07:38	100.00%
	075NB001.32	I-75 AT NW 89 Ave	32	54	138:23:42	93.50%
	075SB001.29	I-75 SB ramp from NW 138 St	170	598	1182:29:41	99.70%
	075SB000.4-EL	I-75 SB before HEFT	51	111	479:21:59	99.84%
	075SB004.1-LL	I-75 SB South of Miami Gardens Dr	139	528	1475:14:06	100.00%
I-75 SUBTOTAL			423	1338	3413:37:06	98.61%
I-195 MAINLINE	57	I-195 EB before North Miami Ave	62	235	276:53:35	100.00%
	105*	I-195 WB before Alton Rd	48	99	145:05:22	N/A
I-195 MAINLINE SUBTOTAL			110	334	421:58:57	100.00%
I-395	886WB	Port Blvd WB before US 1	254	650	784:07:23	98.89%
	104**	I-395 WB at Watson Island	340	935	941:35:12	N/A
I-395 SUBTOTAL			594	1585	1725:42:35	98.89%
LIMITED ACCESS FACILITIES SUBTOTAL			5986	17729	26158:13:10	99.06%

DMS Usage by Roadway (Arterials)

Roadway	ID	Location	# of Activations	# of Messages	Duration (hr:mm:ss)	Availability
I-95 ARTERIAL	109	Ives Dairy Rd EB before I-95	145	486	679:00:19	97.09%
	113	Ives Dairy Rd WB before I-95	143	478	698:15:37	98.04%
	110	Miami Gardens Dr EB before I-95	178	669	826:52:46	96.91%
	111	Miami Gardens Dr WB before I-95	183	732	841:17:13	96.95%
	112	NW 103 St EB before I-95	253	844	916:05:11	100.00%
	106	NW 79 St EB before I-95	318	1049	1046:36:51	95.71%
	107	NW 54 St EB before I-95	326	1126	1176:04:00	100.00%
	108	SW 8 St EB before I-95	212	718	599:14:55	100.00%
I-95 ARTERIAL SUBTOTAL			1758	6102	6783:26:52	98.09%
GOLDEN GLADES INTERCHANGE	6 ⁺	SR 826 WB west of NE 2 Ave	273	1026	1021:16:05	N/A
	7	Turnpike SB to Golden Glades	245	834	869:09:30	100.00%
	9 ⁺	US 441 NB at Tri-Rail	101	394	562:03:45	N/A
	10 ⁺	SR 9 NB before Park & Ride	98	384	504:08:08	N/A
	8	US 441 SB at NW 179 St	188	699	635:52:25	97.56%
GOLDEN GLADES INTERCHANGE SUBTOTAL			905	3337	3592:29:53	98.78%
SR 826 ARTERIAL	SW24EB	SW 24 St EB before SR 826	121	299	502:59:30	98.23%
	SW24WB	SW 24 St WB before SR 826	123	303	526:45:50	100.00%
	SW40EB	SW 40 St EB before SR 826	80	173	171:52:57	99.95%
	SW40WB	SW 40 St WB before SR 826	80	176	171:48:40	100.00%
	SW56EB	SW 56 St EB before SR 826	67	154	153:30:09	99.95%
	SW56WB	SW 56 St WB before SR 826	67	154	153:30:01	100.00%
	SW72EB	SW 72 St EB before SR 826	61	137	150:47:19	99.95%
	SW72WB	SW 72 St WB before SR 826	38	102	15:38:45	100.00%
	SR968EB*	W Flagler St EB before SR 826	124	331	528:45:14	N/A
	SR968WB*	W Flagler St WB before SR 826	124	331	528:45:21	N/A
	NW25EB*	NW 25 St EB before SR 826	117	287	165:14:09	N/A
	NW25WB*	NW 25 St WB before SR 826	117	287	165:14:16	N/A
	NW36EB*	NW 36 St EB before SR 826	121	285	166:54:05	N/A
	NW36WB	NW 36 St WB before SR 826	144	345	215:17:39	96.21%
	SW8EB	SW 8 St EB before SR 826	133	326	530:49:00	100.00%
	SW8WB	SW 8 St WB before SR 826	134	327	530:50:00	100.00%
	SW88EB*	Kendall Dr EB before SR 826	33	83	15:27:04	N/A
	SW88WB*	Kendall Dr WB before SR 826	33	83	15:27:04	N/A
	ADMS-103ST-EB	NW 103 St EB before SR 826	158	427	636:19:13	100.00%
	ADMS-103ST-WB	NW 103 St WB before SR 826	169	491	709:26:50	100.00%
	ADMS-122ST-EB	NW 122 St EB before SR 826	181	603	1178:15:37	99.17%
	ADMS-122ST-WB	NW 122 St WB before SR 826	181	602	1182:38:13	99.96%
	ADMS-154ST-EB	NW 154 St EB before SR 826	160	564	1170:30:40	100.00%
	ADMS-154ST-WB	NW 154 St WB before SR 826	163	564	1144:33:21	99.92%
	ADMS-58ST-WB	NW 58 St WB before SR 826	164	400	562:03:14	100.00%
	ADMS-74ST-EB	NW 74 St EB before SR 826	143	348	810:27:34	100.00%
	ADMS-74ST-WB	NW 74 St WB before SR 826	169	402	946:39:12	100.00%
	ADMS-US27-EB	US 27 EB before SR 826	174	494	1079:26:43	100.00%
	ADMS-US27-WB	US 27 WB before SR 826	185	534	1111:21:03	100.00%
SR 826 ARTERIAL SUBTOTAL			3564	9612	15241:18:43	99.70%

Roadway	ID	Location	# of Activations	# of Messages	Duration (hr:mm:ss)	Availability
I-195 ARTERIAL	38	Alton Rd SB before I-195	118	357	301:09:24	100.00%
	39 ^{††}	Arthur Godfrey WB before I-195	70	265	120:23:24	85.83%
	40 ^{††}	Alton Rd NB before I-195	72	249	116:52:55	86.02%
I-195 ARTERIAL SUBTOTAL			260	871	538:25:43	90.60%
I-75 ARTERIAL	ADMS-W80ST-NB	Hialeah Grdns Blvd NB before I-75	163	576	1175:20:44	99.96%
	ADMS-NW138ST-EB	NW 138th St EB before I-75	157	531	1092:53:53	97.40%
I-75 ARTERIAL SUBTOTAL			320	1107	2268:14:37	98.68%
US 1 FROM I-95 TO BEGINNING OF HEFT	23	US 1 NB beyond SW 17 Ave	249	692	635:37:49	99.96%
	45	US 1 SB before SW 80 St	36	55	153:44:05	100.00%
	47	US 1 SB at Florida's Turnpike	25	40	135:31:20	99.48%
	46	US 1 NB before Killian Dr	52	119	150:18:47	99.76%
	48	US 1 NB at Florida's Turnpike	32	58	140:04:47	97.67%
US 1 FROM I-95 TO BEGINNING OF HEFT SUBTOTAL			394	964	1215:16:48	99.37%
US 27 OKEECHOBEE RD	US27KROME-SB	US 27 SB at Krome Ave	3	5	1:11:48	100.00%
	US27NW186ST-NB	US 27 NB at NW 186 St	0	0	0:00:00	99.93%
US 27 TO OKEECHOBEE RD SUBTOTAL			3	5	1:11:48	99.97%
US 1 SOUTH OF BEGINNING OF HEFT	62	US 1 NB at Mile Marker 126	3	3	0:35:23	100.00%
	64	US 1 NB at Mile Marker 106	7	16	10:39:44	96.98%
	66	US 1 NB at Mile Marker 91.5	13	26	61:29:13	100.00%
	68	US 1 NB at Mile Marker 39.5	34	116	540:48:10	99.96%
	71 ^{††}	US 1 NB at Mile Marker 7.5	48	127	518:10:27	78.75%
	61	US 1 SB at Mile Marker 126	50	150	621:34:44	100.00%
	63	US 1 SB at Mile Marker 113	20	93	475:47:20	98.33%
	65	US 1 SB at Mile Marker 106	21	78	478:32:26	99.79%
	67	US 1 SB at Mile Marker 91.5	18	75	471:39:46	100.00%
	69	US 1 SB at Mile Marker 39.5	7	7	31:06:22	95.90%
	70 ^{††}	US 1 SB at Mile Marker 7.5	1	1	0:09:34	77.87%
US 1 SOUTH OF BEGINNING OF HEFT SUBTOTAL			222	692	3210:33:09	95.23%
ARTERIALS SUBTOTAL			7,426	22,690	32850:57:33	97.98%
LIMITED ACCESS FACILITIES SUBTOTAL			5,986	17,729	26158:13:10	99.06%
GRAND TOTAL			13,412	40,419	59009:10:43	98.39%

* DMS under ITS DMS Replacement Projects. System availability is not measured for these devices.

** DMS under the I-395/SR 836/I-95 Design Build Contractor. System availability is not measured for these devices.

† DMS under Golden Glades Interchange Enhancement Project. System availability is not measured for these devices.

†† DMS had communication issues and repairs were made. System availability is measured for these devices.