

# **Miami-Dade Traffic Incident Management Team Palmetto Corridor Meeting**

**August 29, 2023**

## FDOT Safety Initiatives

Wrong Way Driving Detection

Traffic Diversion Routes

Incident Management Stats

Rapid Incident Scene Clearance (RISC)

Responder Safety





## Mandatory

- Rear-Facing Red Light Bar
- Advanced Warning Alert
- Safety Messages on DMS
- Road Ranger Tactical and Refresher Training
- Channelizing Lights

## Optional

- Debris Removal System
- Truck-Mounted Attenuator





## Incident Response Vehicles (IRV)

- Rear Lights Changed from Four Amber Strobe Lights to Six Red Strobe Lights

## Findings

- New Lights Improve Truck Visibility
- Enhances Scene Safety
- Positive Feedback from IRV Operators
- Motorists Slowing and Moving Over Earlier

## Next Steps

- Expansion to Road Ranger Fleet

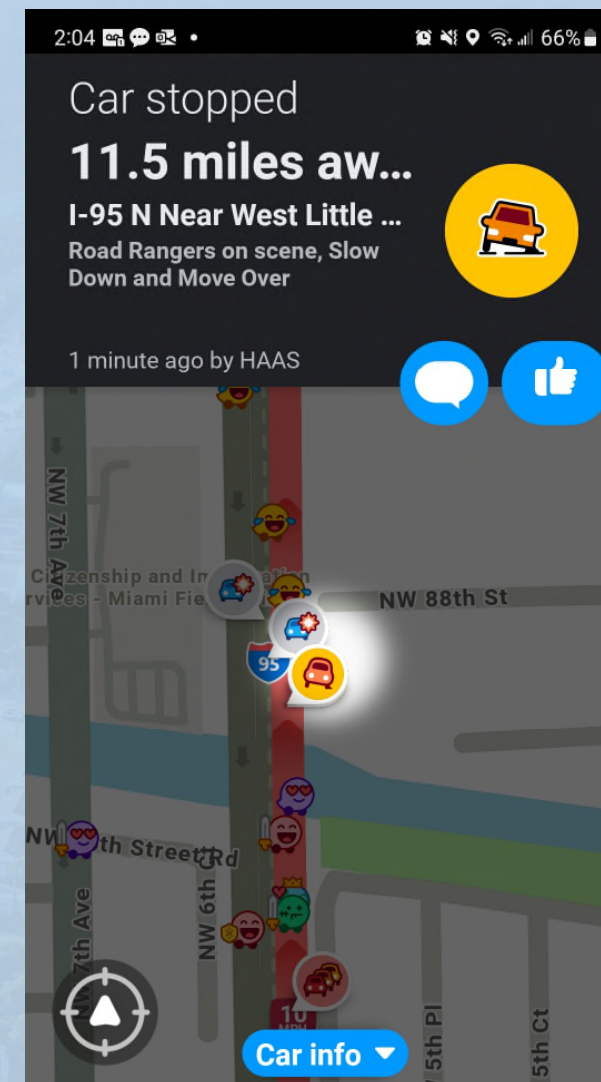




## Incident Response Advanced Warning Alerts

- Alert System Triggered by Activated Lights
- Transmits Incident Data to Navigation Apps
- Installed on IRV and Road Ranger Vehicles
- Improves Responder and Motorist Safety

5



**DRIVE SOBER  
OR GET  
PULLED OVER**



**SEAT BELTS  
SAVE LIVES**

**SECURE YOUR  
LOAD FOR  
SAFER ROADS**

**MOVE OVER FOR  
EMERGENCY VEHICLE  
IT'S THE LAW**



## Road Ranger Tactical and Refresher Training

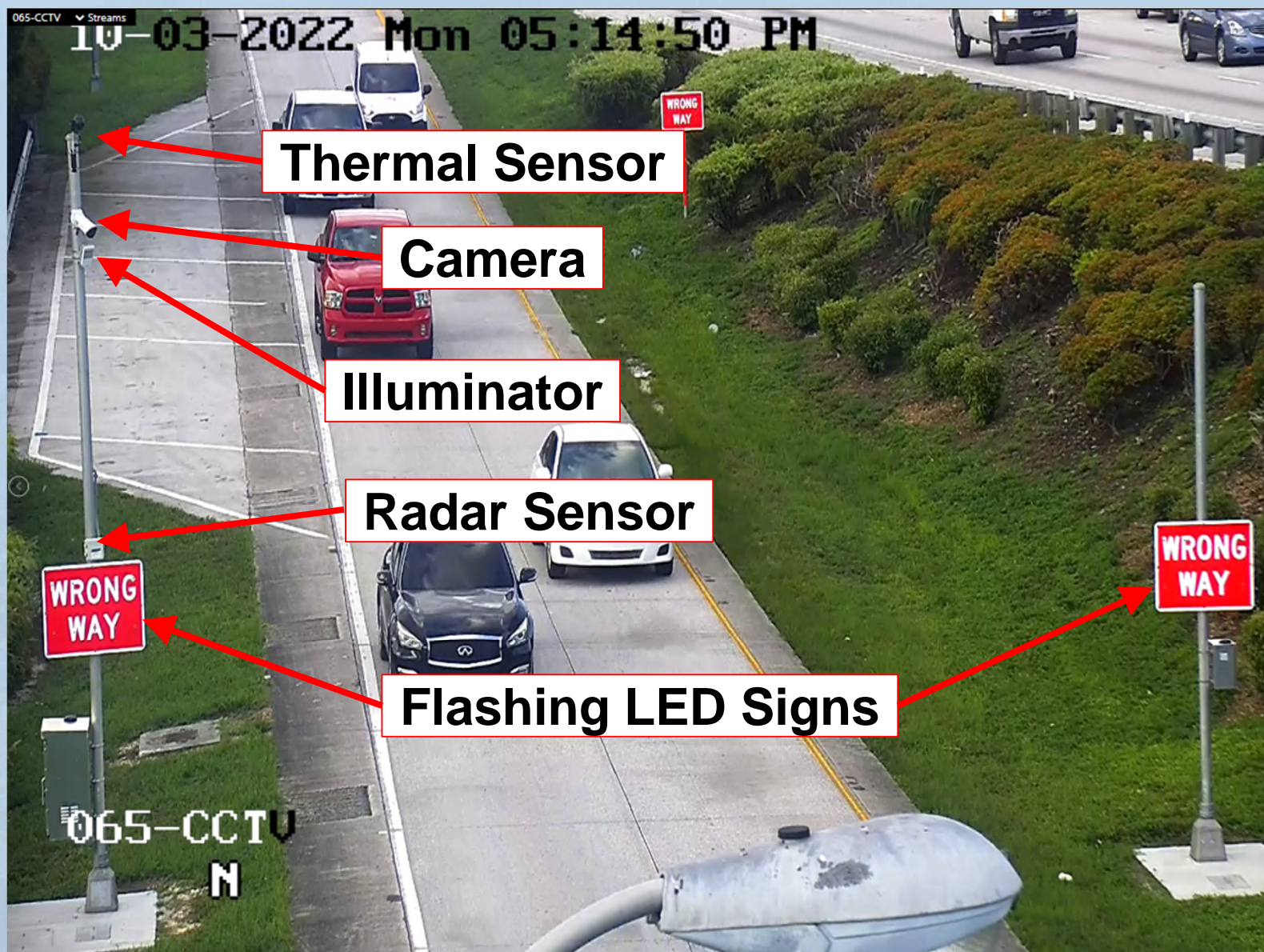
- Standardized Training Throughout the State
  - Tactical Safety Training
  - Computer Based Incident Management Training
- Improves Road Ranger Safety
- District Six Completed Train-the-Trainer
- Will Become Part of Training Material for Incident Management Personnel





# Wrong Way Driving Detection

## Components





# Wrong Way Driving Detection

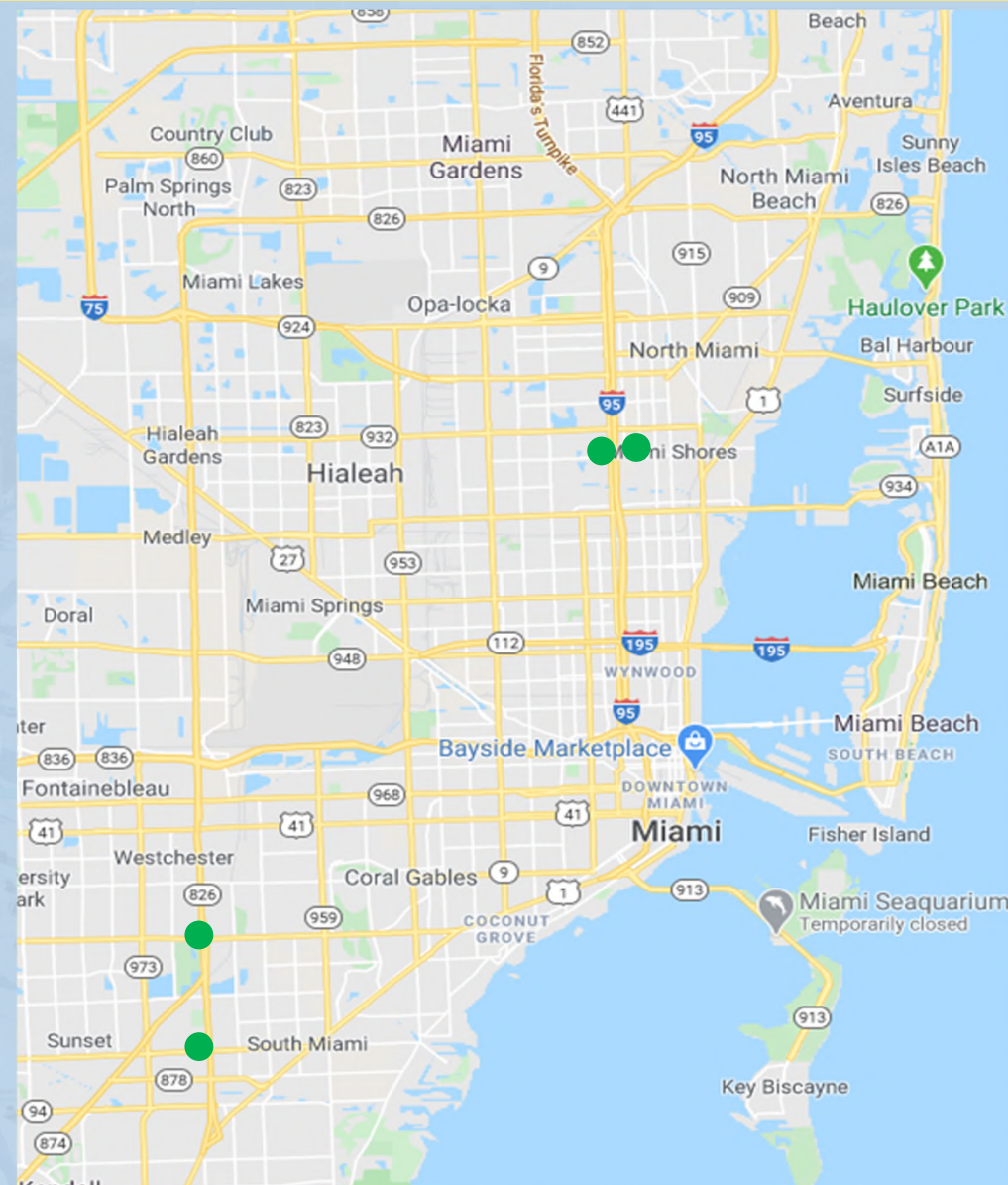
## FDOT Identified Total of 95 Off-Ramps In Miami-Dade County

### Currently Deployed

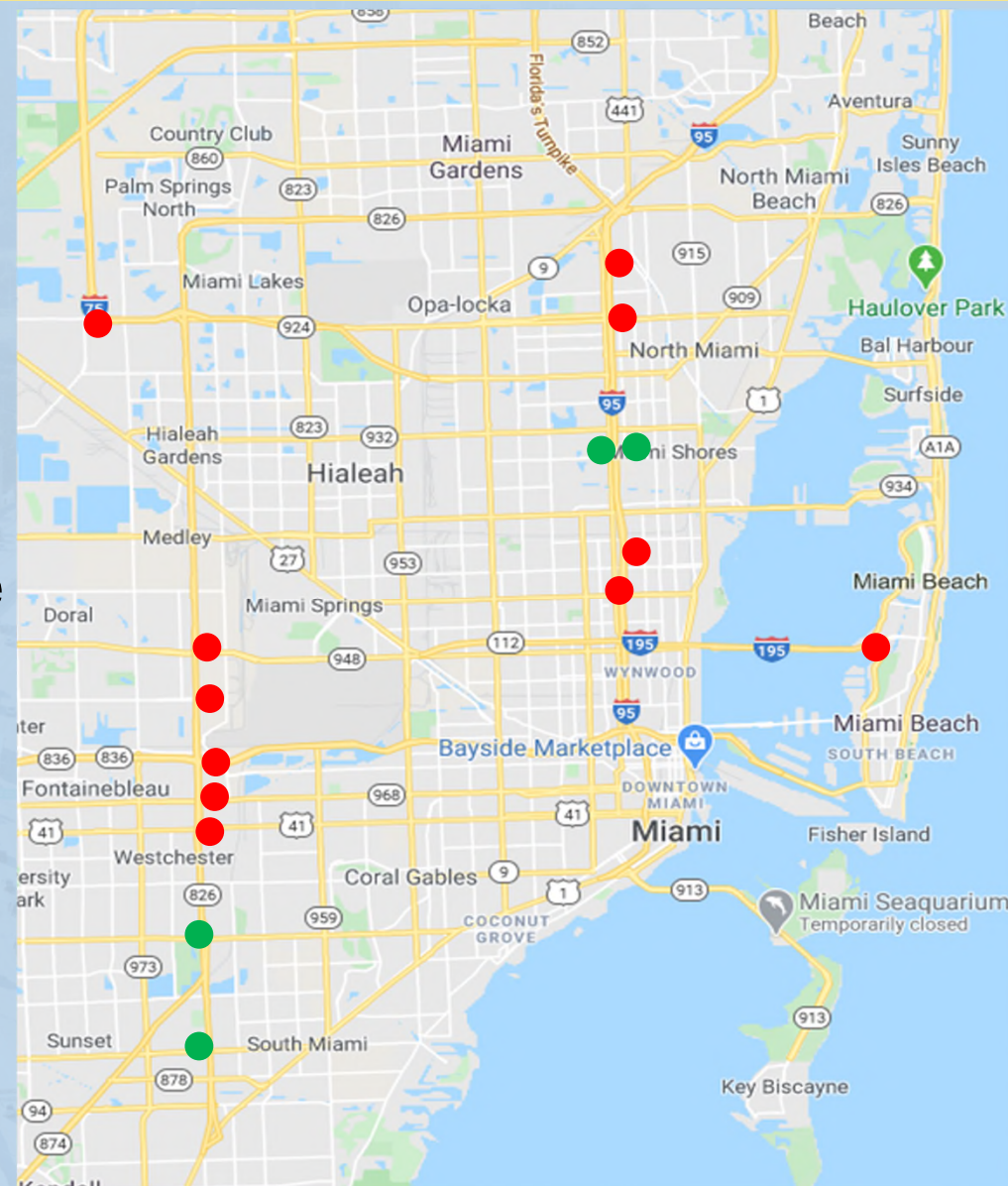
- SR 826 SB off-ramp to Bird Road
- SR 826 SB off-ramp to Miller Drive
- I-95 off-ramps to NW 95 Street

### Ongoing Project (Phase 1)

- 11 off-ramps
- Design Build Project
- Notice to Proceed Issued June 13, 2022
- Estimated Completion November 2023









# Wrong Way Driving Detection

Currently Deployed ●

Phase 1 Project Locations ●

Phase 2 Project Locations ●

Phase 3 Project Locations ●

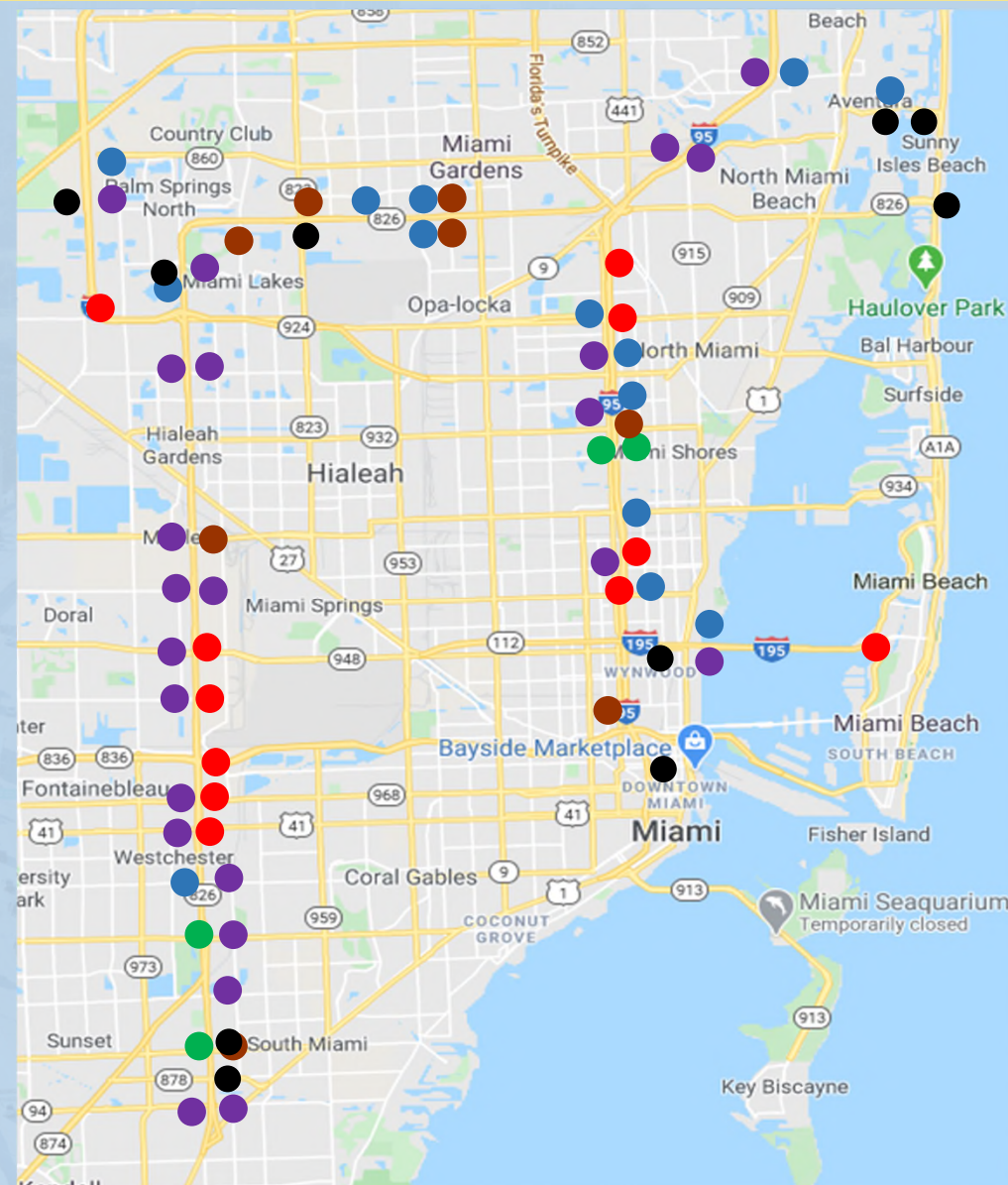
Phase 4 Project Locations ●

Phase 5 Project Locations ●


**74 WWDS**


**Other Projects 21 WWDS**


**TOTAL 95 WWDS**








 Resolve Alarm


 Create New Event


 Create Secondary Event

 Associate to Existing Event

 Acknowledge and Take Ownership

 Dismiss as False Alarm

 View Event Details

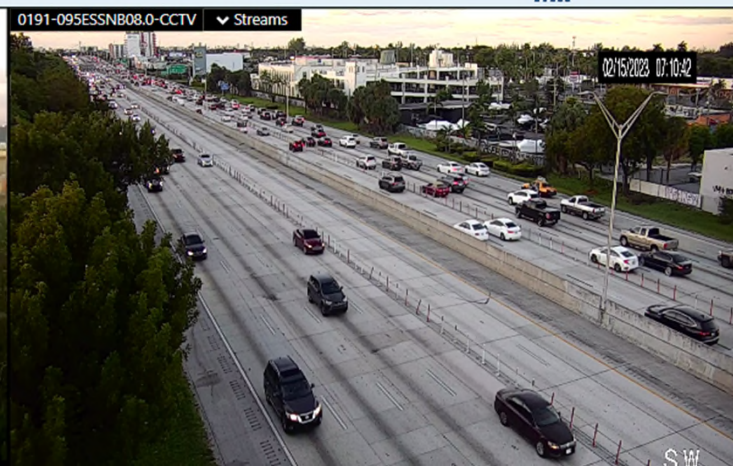
 Find on Map

Resolve Actions

Alarm Actions

Detection Time	Speed	Direction	Roadway	Location Description	Notification Device	Alert Type	Associated Event
02/15/2023 00:59		Northbou...	I-95	I-95 NB@NW 95 ST	WWD:I-95NB@NW95ST	Wrong Way Driver	<a href="#">1150798</a>

7 of 8





# Wrong Way Driving Detection

- Multiple Image Captures
- Video on Desktop - Cameras Upstream from Location
- BOLO (“Be on the Lookout”) to Road Rangers and Incident Response Vehicle Operators
- FHP Notification
- Event, Email, FL511, and DMSs.

**WRONG WAY  
DRIVER REPORTED  
USE CAUTION**

7 of 8





## Incident Management Traffic Diversion Routes

- Major Incidents
- Full Closures
- Discuss, Distribute, and Coordinate
  - FHP Troop E
  - Fire Rescue
  - IRV Operators
  - Road Rangers
  - Asset Maintenance
  - Miami-Dade County
- [SunGuide.info](http://SunGuide.info) – [TIM Page](#)



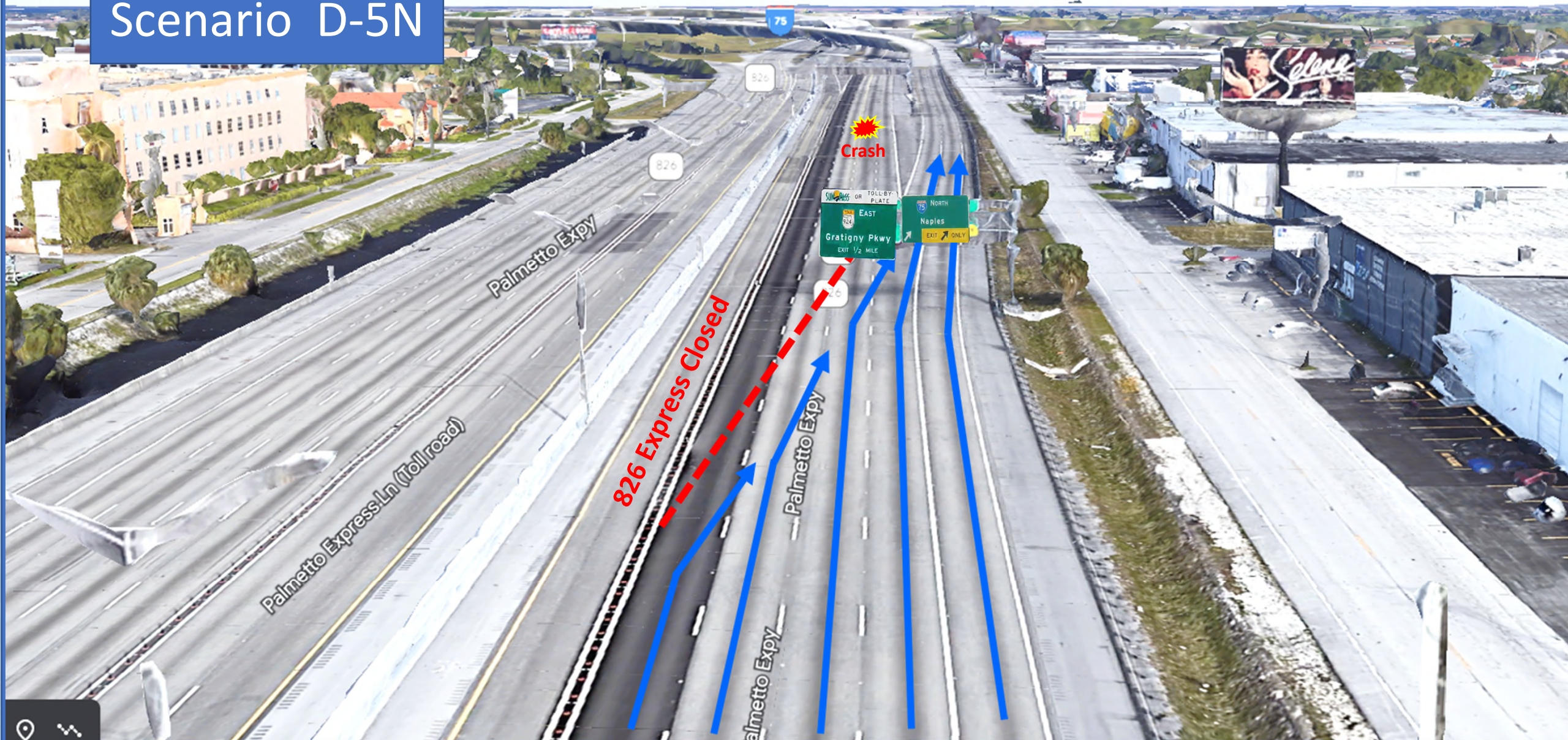


# Traffic Diversion Routes

SR 826	Procedures
Scenario	
<p><b>Code:</b> D-5N</p> <p><b>Location:</b> SR 826 NB at I-75</p> <p><b>Description:</b> Significant event is detected on SR 826 NB at I-75 which results with all lanes closed.</p>	<ol style="list-style-type: none"><li>1. Close all lanes on SR 826 NB at I-75.</li><li>2. Post applicable DMS; post FL511 message, and Email (RPG).</li><li>3. Notify Central Office as well as additional proper notifications and document all calls in General Log/SunGuide Software.</li><li>4. Request assistance from asset-maintenance for long-term MOT.</li><li>5. Monitor the event with camera and/or Road Ranger on scene.</li></ol>



# Scenario D-5N





# Incident Management Stats

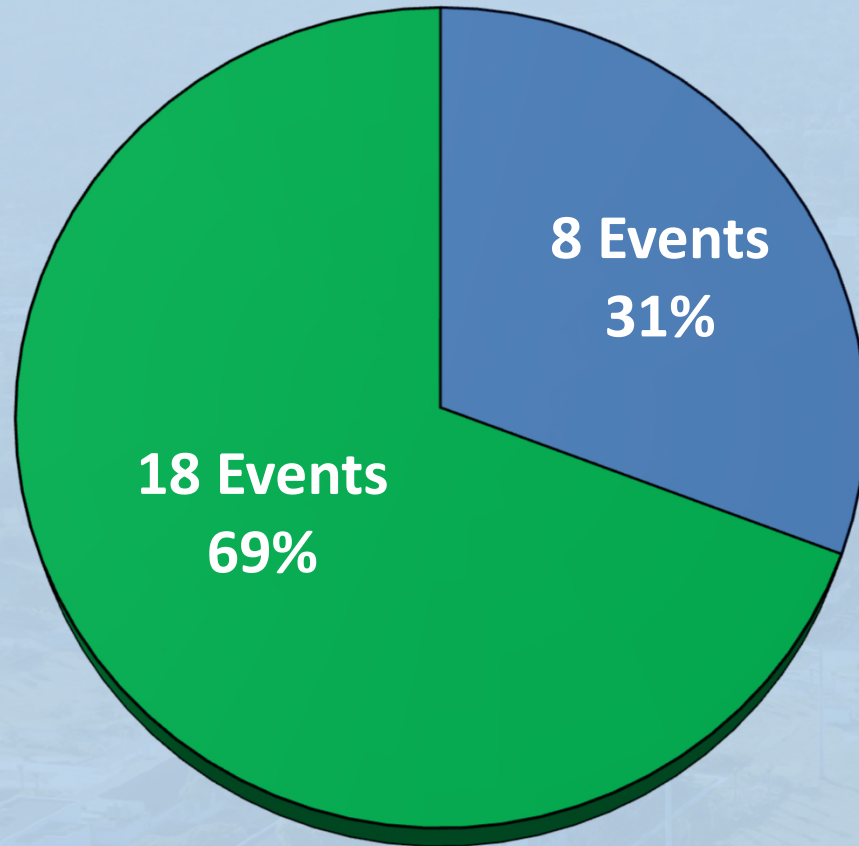
INCIDENT MANAGEMENT STATS	FY 21/22	FY 22/23
Number of Events	52,300	52,000
Lane Blockage Events	20,700	20,500
Average Response Time	10.9 min	11.3 min
Average Lane Clearance Time	30.3 min	30.6 min
RISC Events	19	26
RISC Average Arrival Time	56 min	58.5 min
RISC Average Lane Clearance Time	50 min	57.5 min
RISC Average Incident Clearance Time	151 min	169.2 min



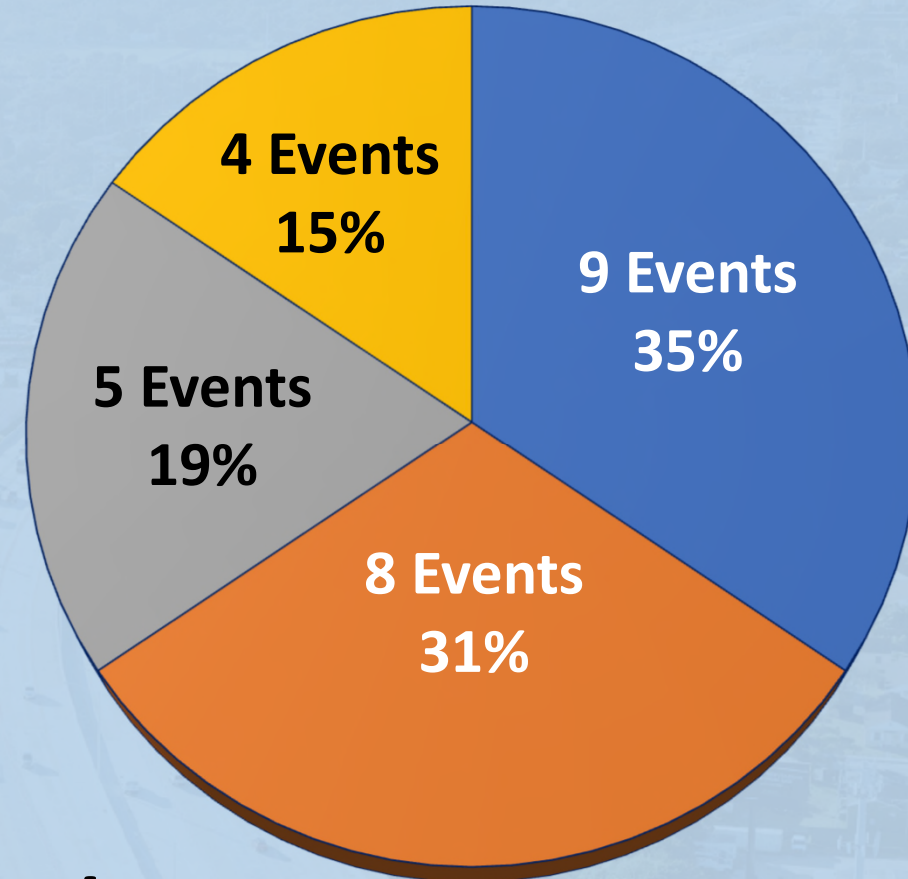


# Rapid Incident Scene Clearance (RISC)

■ 95 Corridor ■ 826 Corridor



■ SR 826/826 Express ■ I-95/95 Express  
■ SR 997 ■ US 27



**Fiscal Year 2022/2023**

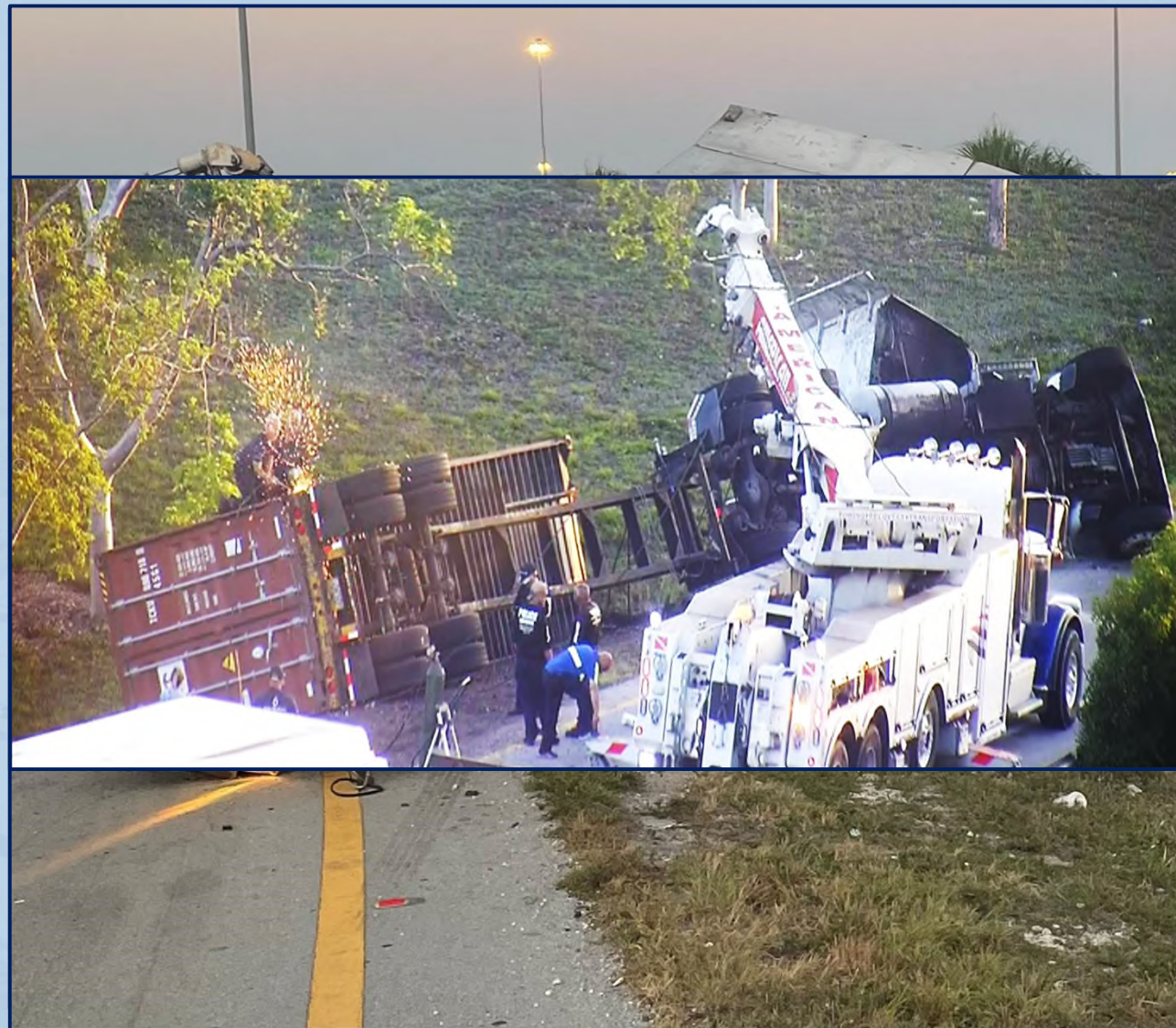


## Incident Details

- April 4, 2023 at 5:45 AM
- SR 826 Northbound, Ramp to SR 924 E
- Overturned Tractor-Trailer

## After-Action Review (AAR)

- Early Notice by Vendor that Recovery will be Longer than 90 Minutes
- Uneven Terrain on the Embankment
- Separated Trailer from Frame with Blow Torch





## Effective January 1, 2024

- Expands to Disabled Vehicles
  - Warning Lights or Hazard Lights
  - Emergency Flares
  - Emergency Signage
  - One or More Persons Visibly Present

◀**MOVE OVER**▶



**DRIVE SAFE, FLORIDA**



## Details

- Online Live Trainings
- Register on [SunGuide.info](https://SunGuide.info)
- Additional Certified Trainers

## Upcoming Trainings

- September 2023
- November 2023
- March 2024





# Crash Responder Safety Week

## November 13-17, 2023

- Five-Day Social Media Campaign with Videos
- CRSW-Focused Articles on SunGuide.info
- Dynamic Message Sign Messaging
- Road Rangers with CRSW Handouts
- [FHWA CRSW Campaign Toolkit](#)





## FDOT PSA August 2023: Impaired Driving National Enforcement

# Thank You!

**TRANSPORTATION SYSTEMS  
MANAGEMENT & OPERATIONS**  
1001 NW 111th Ave, Miami, FL 33172

VISIT [SUNGUIDE.INFO](https://www.sunguide.info) FOR MORE INFORMATION





# State Road (SR) 826/Palmetto Expressway Capacity Project



**Project Manager:** Enmanuel “Manny” Espinal, M.S.E.M., P.E.  
**Financial Management Numbers:** 447165-1, 441830-1, 441831-1  
**Construction Timeline:** Late Spring 2022 – Winter 2024  
**Design/Build Contract Amount:** \$66 Million



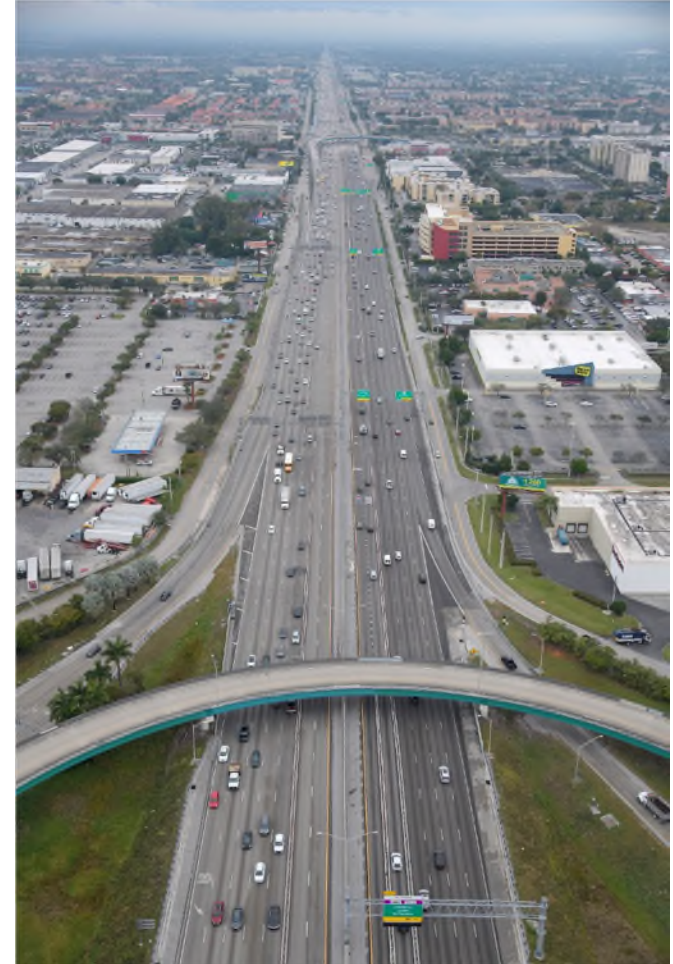
# SR 826 Capacity Improvement Project

## Modifications

Capacity improvements will be implemented along the Palmetto Expressway from south of NW 36 Street to north of NW 154 Street.

### Project milestones

- Notice to proceed – end of January 2022
- Construction began – April 2022
- Temporary NW 103 Street/W 49 Street express lane conversion completed – Summer 2022
- Permanent NW 103 Street/W 49 Street Flyover modification ongoing
- Construction ends – Winter 2024

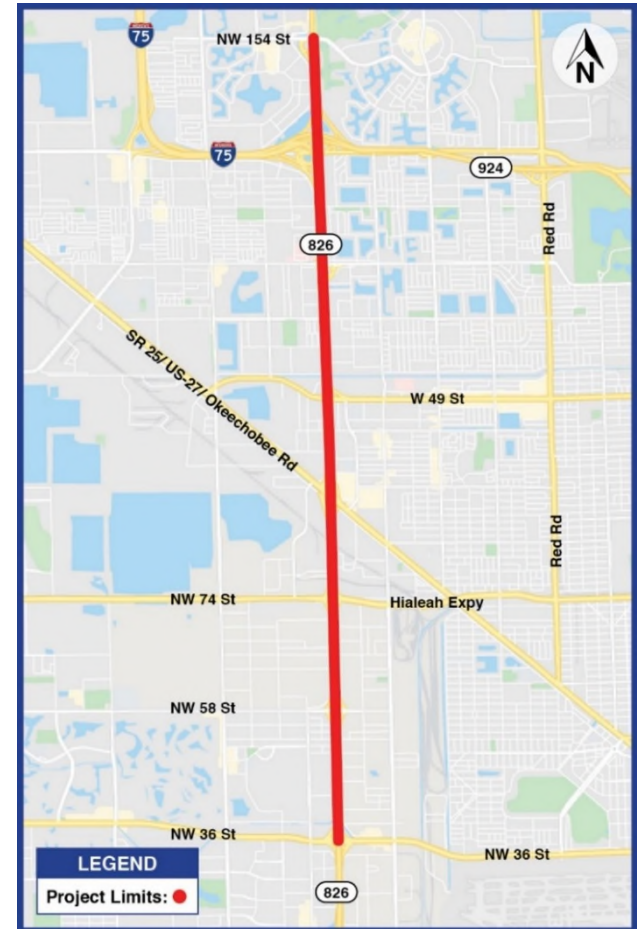




# SR 826 Capacity Improvement Project

## Modifications

- Temporarily converting one southbound express lane to a non-tolled lane at NW 103 Street/W 49 Street to provide an additional non-tolled lane at NW 103 Street/W 49 Street (total of 1 express lane and 4 non-tolled lanes)
- Extending the auxiliary lane between Okeechobee Road and NW 74 Street
- Widening the southbound bridges over NW 74 Street, Metrorail and FEC Railway
- Widening the northbound bridge over NW 103 Street/W 49 Street
- Relocating the express lane entrance at NW 154 Street to NW 103 Street/W 49 Street to allow access to the express lanes from NW 154 Street and NW 122 Street/W 68 Street

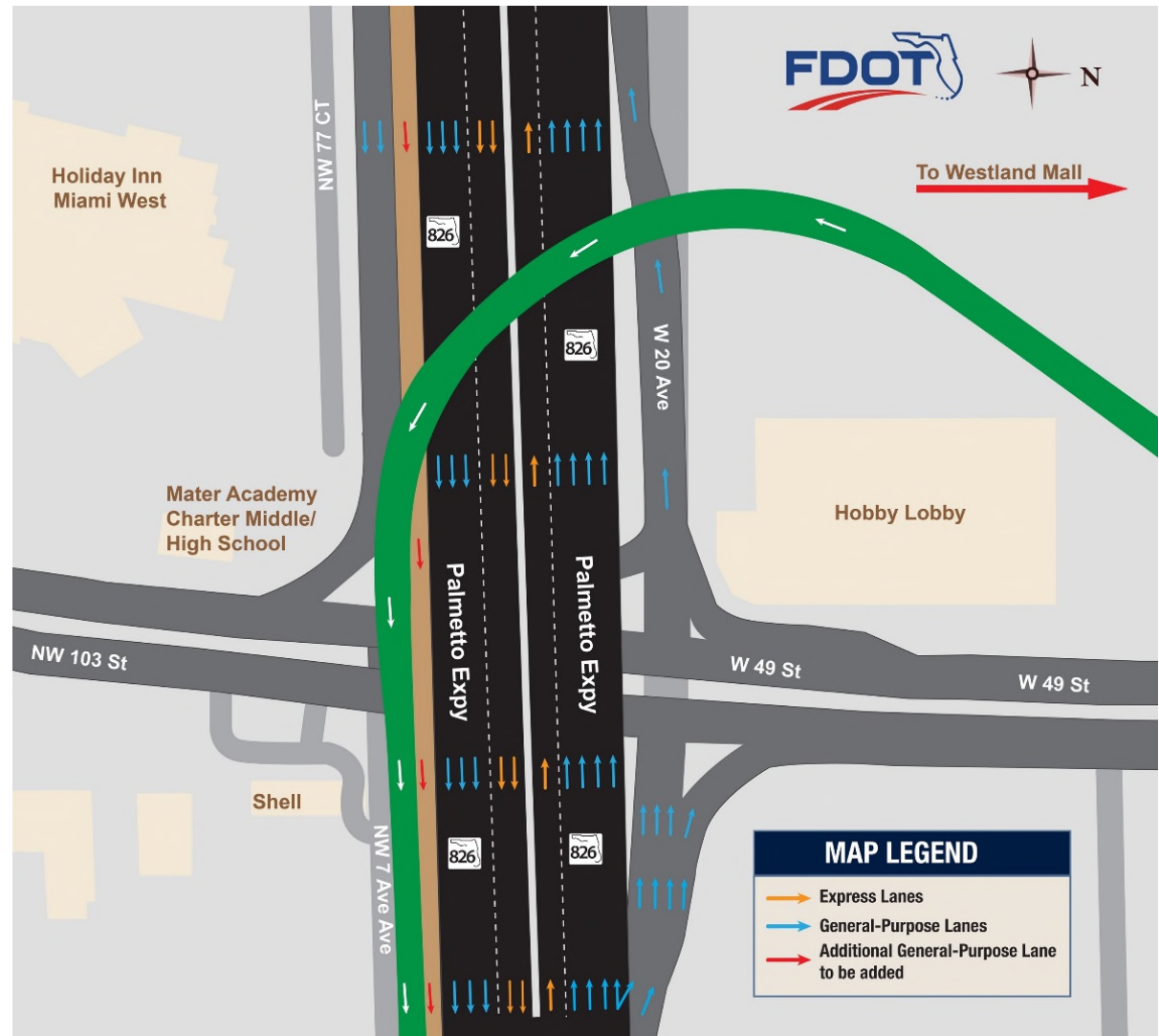




# SR 826 Capacity Improvement Project

## Flyover Modification

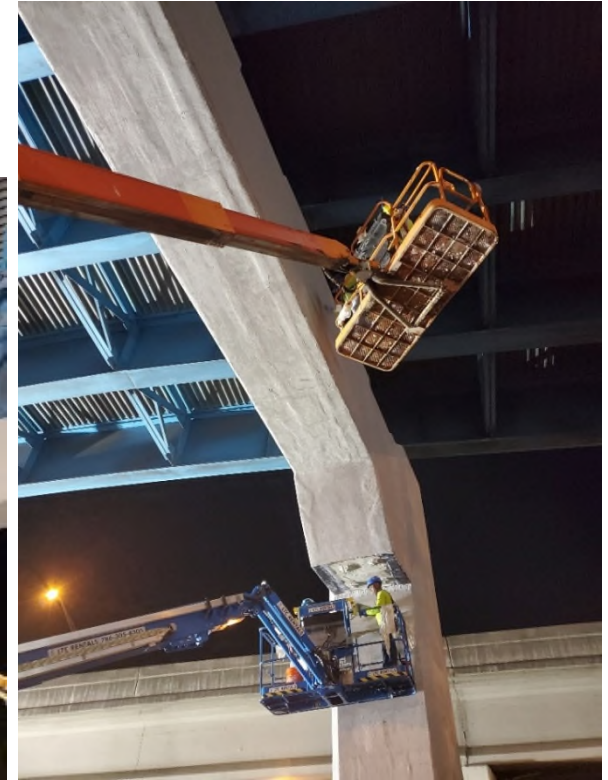
- Modify the flyover from westbound NW 103 Street/W 49 Street to southbound SR 826
- And widen the southbound SR 826 bridge over NW 103 Street/W 49 Street to create a permanent additional non-tolled lane





# SR 826 Capacity Improvement Project

## Construction activities





# SR 826 Capacity Improvement Project

## Outreach Plan

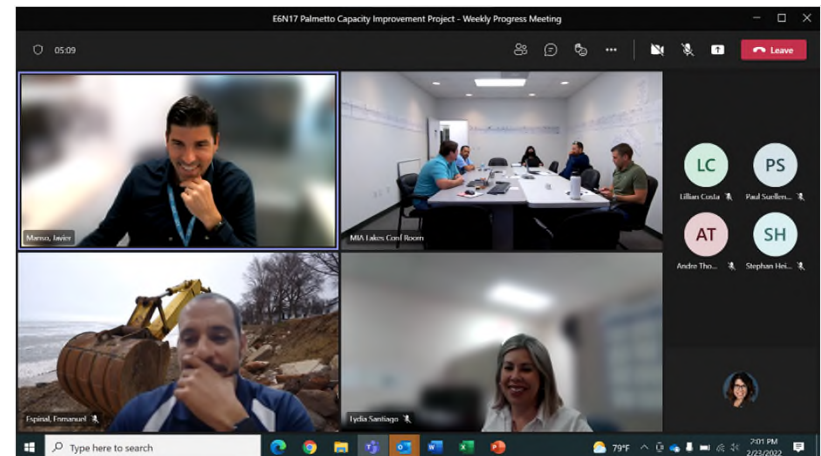
### Objectives:

- Educate the community regarding the capacity improvement project before, during and after construction
- Foster project support from local community leaders and elected officials
- Build on existing collaborative partnerships and develop new partnerships to expand public outreach



### Features:

- Regular project briefings
- Timely social media updates
- Drive time radio advertisements in English and Spanish during project kickoff





# SR 826 Capacity Improvement Project

## Outreach activities

- English and Spanish-language radio ads ran throughout March
- Elected official briefings
  - Rep. Alex Rizo
  - Rep. Tom Fabricio
  - Mayor Miami Springs
- Public Meeting held April 6
- Media coverage – Telemundo, NBC and WIOD in April
- Pop-up events throughout the year







Florida Department of  
**TRANSPORTATION**

# Thank you!

**For more information, please contact:**

Project Manager Enmanuel “Manny” Espinal, M.S.E.M., P.E.  
(305) 640-7414, [Enmanuel.Espinal@dot.state.fl.us](mailto:Enmanuel.Espinal@dot.state.fl.us)

CCEI Sr. Project Engineer David Tinder  
(305) 670-2350, [Dtinder@bcceng.com](mailto:Dtinder@bcceng.com)

CCEI Sr. Project Engineer Kory Knepper  
(786) 304-9688, [Kknepper@bcceng.com](mailto:Kknepper@bcceng.com)

Community Outreach Specialist Maria Camacho  
(305) 731-7699, [Maria.Camacho@qcausa.com](mailto:Maria.Camacho@qcausa.com)

**Visit** [www.826palmetto.com](http://www.826palmetto.com)





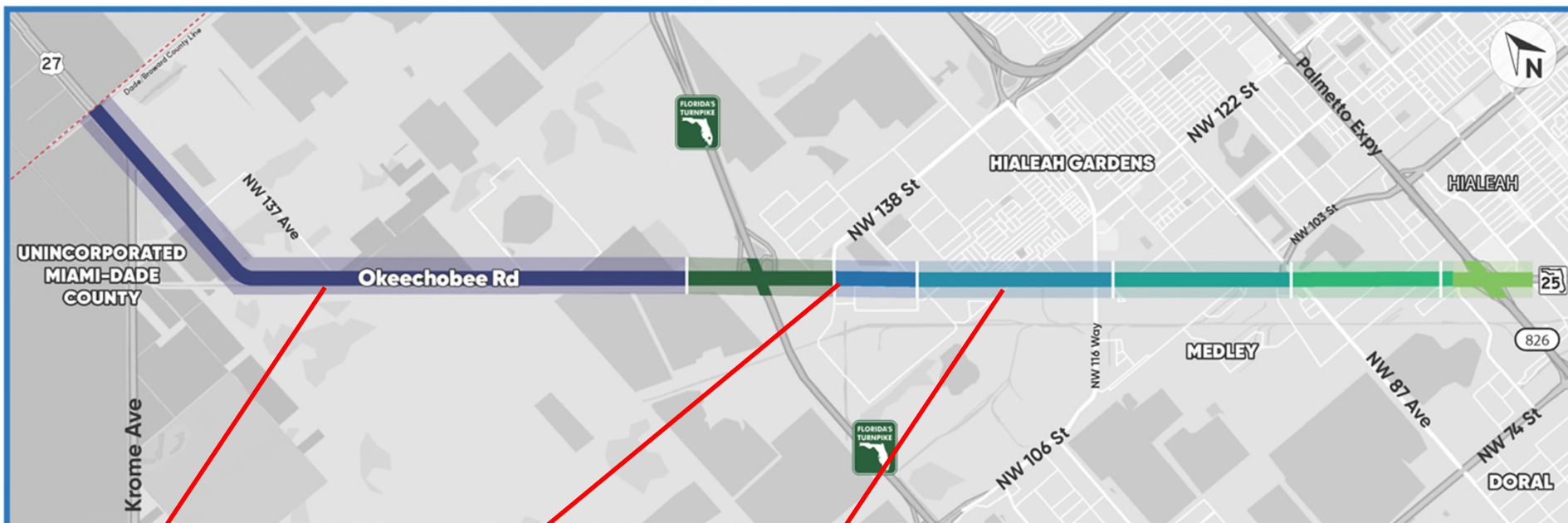
Florida Department of  
TRANSPORTATION



# State Road (SR) 25/US 27/Okeechobee Road Reconstruction Projects



# Florida Department of TRANSPORTATION



## LEGEND

### Segment One

#### FM No: 423251-2

SR 25/US 27/Okeechobee Road from the Broward County Line to west of SR 821/Florida's Turnpike

##### Project Description

- Widening SR 25/US 27/Okeechobee Road to improve the turning radius and extend turn lanes at all intersections
- Realigning the frontage roads and intersections
- Closing various median openings and constructing a new opening at NW 129 Avenue
- Replacing guardrail along the C-6 Canal
- Installing guardrail along the median of SR 997/ Krome Avenue
- Upgrading pavement markings, signalization, and lighting along the corridor
- Installing Intelligent Transportation System (ITS) and a hub building

Est. Construction Cost: \$42.5 million  
Start: February 2022  
Est. Completion: summer 2024

### Managed by Florida's Turnpike Enterprise

#### FM No: 435542-3

SR 25/US 27/Okeechobee Road from west of SR 821/Florida's Turnpike to west of NW 138 Street

##### Project Description

- Reconstructing and widening SR 25/US 27/Okeechobee Road to three lanes in each direction
- Adding turn lanes and auxiliary lanes for the new and existing SR 821/Florida's Turnpike ramps

Est. Construction Cost: \$370 million  
Start: March 2020  
Est. Completion: fall 2025

#### FM No: 443645-1

SR 25/US 27/Okeechobee Road from west of NW 138 Street to east of NW 107 Avenue

##### Project Description

- Reconstructing and widening the road with concrete pavement
- Widening the bridge over the Miami Canal at NW 138 Street and NW 107 Avenue to provide a wider turning radius
- Improving the intersection of SR 25/US 27/Okeechobee Road at NW 107 Avenue and NW 138 Street by adding new turning lanes, signals and pedestrian crosswalks
- Installing overhead electronic message signs and traffic monitoring cameras
- Adding a raised median and a westbound ramp entrance

Est. Construction Cost: \$105.6 million  
Start: May 2022  
Est. Completion: early 2026

### Segment Two

#### FM No: 423251-5

SR 25/US 27/Okeechobee Road from east of NW 107 Avenue to east of NW 116 Way/Hialeah Gardens Boulevard

##### Project Description

- Adding a second level overpass on SR 25/US 27/Okeechobee Road to cross to NW 116 Way
- Widening the roadway and the bridges over the Miami Canal
- Reconstructing various locations with concrete pavement
- Installing new traffic signals and providing bicycle lanes
- Installing new guardrail, medians and shoulder concrete barrier walls
- Upgrading traffic and pedestrian signage, pavement markings, signalization, and lighting
- Installing new ITS

Est. Construction Cost: \$105.6 million  
Start: May 2022  
Est. Completion: early 2026

### Segment Five

#### FM No: 423251-4

SR 25/US 27/Okeechobee Road from east of NW 116 Way to east of NW 87 Avenue

##### Project Description

- Adding a third level overpass at the intersection of SR 25/US 27/Okeechobee Road and NW 87 Avenue
- Realigning the intersection at NW 103 Street
- Reconstructing NW South River Drive
- Building a new low-level bridge at NW 106 Street
- Widening NW 106 Street
- Relocating the Water Control Structure
- Installing sidewalks

Est. Construction Cost: \$233.6 million  
Est. Start: early 2026  
Est. Completion: early 2032

### Segment Three

#### FM No: 423251-3

SR 25/US 27/Okeechobee Road from east of NW 87 Avenue to NW 79 Avenue

##### Project Description

- Reconstructing SR 25/US 27/Okeechobee Road using concrete pavement
- Widening SR 25/US 27/Okeechobee Road to four lanes in both directions and the bridge on NW 79 Avenue over the Miami Canal
- Modifying the intersection of NW 95 Street and Frontage Road
- Providing new access from Frontage Road to westbound SR 25/US 27/Okeechobee Road

Est. Construction Cost: \$36 million  
Est. Start: late 2024  
Est. Completion: fall 2028

### Segment Four

#### FM No: 436565-1

SR 25/US 27/Okeechobee Road at SR 826/ Palmetto Expressway Interchange

##### Project Description

- Constructing three new ramps:
  - From northbound SR 826 to westbound SR 25
  - From eastbound SR 25 to northbound SR 826
  - From eastbound SR 25 to southbound SR 826

Est. Construction Cost: \$121 million  
Est. Start: late 2024  
Est. Completion: fall 2028





# Segment One

---

Project Limits: SR 25/US 27/Okeechobee Road from the Broward County Line to west of SR 821/Florida's Turnpike

Start Date: February 28, 2022

**Estimated Completion Date:** fall 2023

**Estimated Cost:** \$42.5 million

*Please note, this schedule may change due to bad weather or other unexpected conditions.*

## Key Milestones Completed

- Concrete Pavement at the following intersections:
  - Krome Avenue
  - NW 154 Street
- Widening operations along Okeechobee Road and asphalt
- Opening all acceleration lanes and general purpose lanes along Okeechobee Road between Krome and NW 154 Street (3.1 miles)
- Installing and energizing all new light poles between Krome Ave and NW 154 Street
- Installing sod along the medians and southbound Okeechobee Rd shoulder adjacent to the canal



## Major Upcoming Activities/Traffic Patterns

- Traffic Patterns - Reopening of travel lanes:
  - From Broward County Line to Krome Avenue
  - From Krome Ave to Okeechobee Road
- Road Work Completion:
  - Final asphalt surface along Okeechobee Road
  - Widening operations and paving along Frontage Roads
  - New signage and pavement markings
  - Applying final surface to all concrete areas
  - Final Punch-List Items

## Progress Photos – Krome Avenue Intersection





## Progress Photos – New Alignment on the Big Bend





## Progress Photos

NW 154 Street Intersection and Median opening at NW 129 Street







## Segment Two

---

Project Limits: SR 25/US 27/Okeechobee Road from east of NW 107 Avenue to east of NW 116 Way/Hialeah Gardens Boulevard

Start Date: May 2, 2022

**Estimated Completion Date:** winter 2025

**Estimated Cost:** \$105.6 million

*Please note, this schedule may change due to bad weather or other unexpected conditions.*

**FDOT PROJECT NO. 423251-4-52-01**

Sidewalk gaps along the north side of th Frontage Rd. are filled in

Direct access from WB NW 122nd Street to WB Okeechobee Rd.

Conventional lighting provided along Frontage Rd. and Okeechobee mainline

**NW 116<sup>th</sup> WAY FIRST LEVEL**

Direct access to Okeechobee Road South Bound via Ramp D

Third level Flyover Ramp for SB NW 116 Way to EB Okeechobee moved to second level

Second level intersection eliminates conflict of existing conditions with three closely spaced intersections

Bike lanes provided along frontage road

**FDOT PROJECT NO. 423251-4-52-01**

Replace existing Pump Station impacted by roadway widening

Bridge reconstruction over Miami Canal done in two phases

Reconstruction of NW South River Driver to be done by Town of Medley under a separate project

Sidewalk connectivity provided on 116 way across the C-6 canal

Provide new sub-aqueous utility crossing

Bridge reconstruction over Miami Canal done in two phases

No wet ponds or french drains south of the canal within a mile radius due to existing contamination from Pepper Steel / Miami Battery Superfund.

**OKEECHOBEE ROAD RECONSTRUCTION**





## Key Milestones Completed

- Installations Completed:
  - 102" Culvert from NW 97 Avenue to C-6 canal
  - Force main from the Town of Medley to City of Hialeah Gardens
- Road Work Completed:
  - NW 116 Way Bridge #6 West half is in service
  - Hialeah Gardens Blvd widening on west side
  - Bridge #1
    - Ramp from southbound Okeechobee Road to Frontage Road is open in temporary condition
    - NW 98 Avenue and Frontage Road intersection is operational

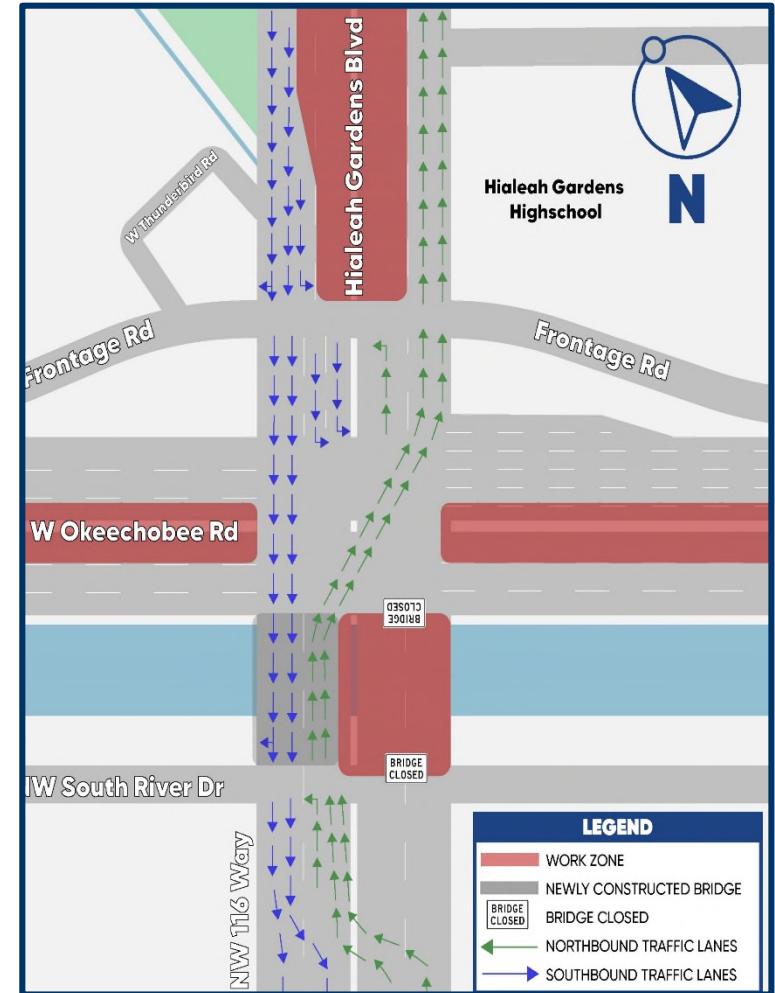
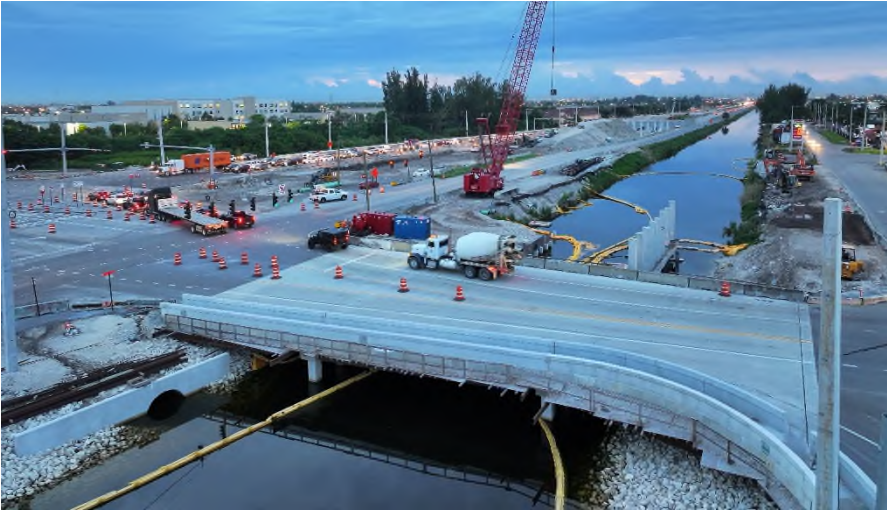


# Major Upcoming Activities/Traffic Patterns

- Upcoming Installations:
  - Beams and concrete deck for Bridges #1 and #3
  - Concrete deck and shift northbound travel lanes for NW 116 Way Bridge #6
  - Concrete pavement along Okeechobee Road
  - Finalize the reconstruction of Hialeah Gardens Blvd and Frontage Road and the intersection of NW 116 Way and NW South River Drive
- Upcoming traffic Patterns:
  - Phase 2 Stage 1: Reducing Okeechobee Road to two lanes in each direction, for most of the project limits

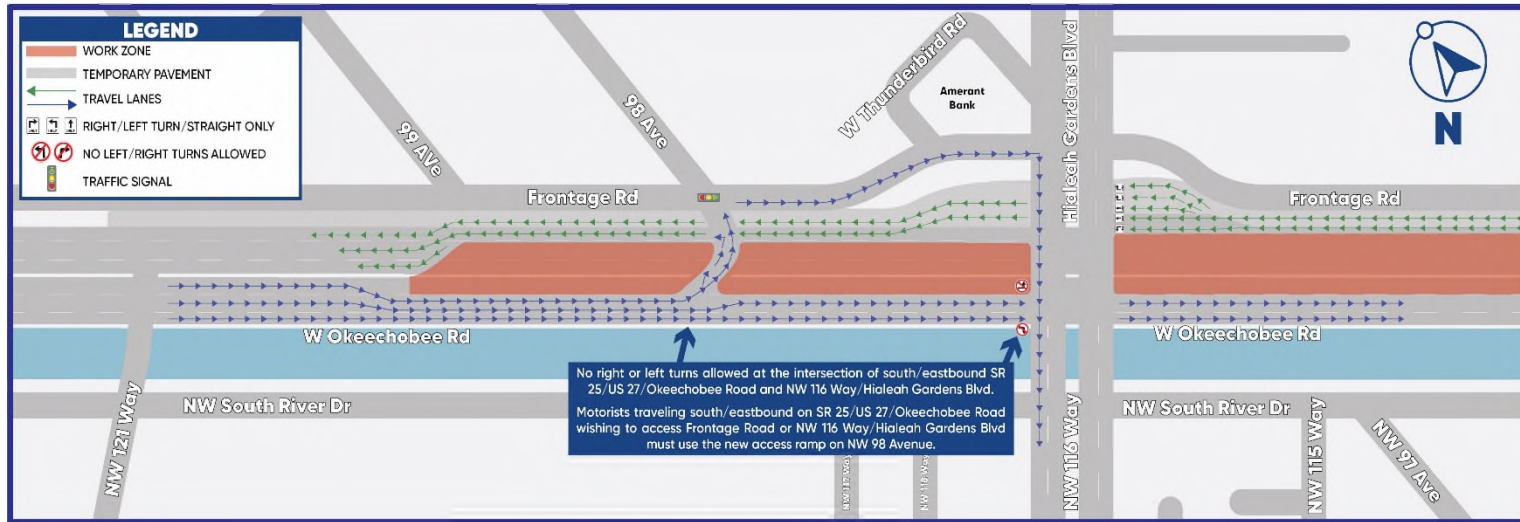


## Progress Photos - NW 116 Way Bridge





## Progress Photos – NW 98 Avenue Ramp





## Progress Photos



Hialeah Gardens Blvd and Frontage  
Road



Okeechobee Rd and  
NW 114 Lane



Florida Department of  
TRANSPORTATION



# Contact

Senior Community Outreach Specialist

Maria Alzate

305-560-8218

Maria@iscprgroup.com

**[www.southflroads.com/okeechobee](http://www.southflroads.com/okeechobee)**

Or scan the QR code:

