

TRAVEL TIME RELIABILITY REPORT

Travel Time Index by Roadway*

Time	I-95**		I-195**		I-75**		SR 826**					
	NB	SB	EB	WB	NB	SB	NB	EB	NE	SB	WB	SW
0:00	0.88	0.86	0.80	0.94	0.96	0.95	0.80	0.84	0.81	0.78	0.83	0.79
1:00	0.84	0.84	0.80	0.93	0.97	0.96	0.80	0.83	0.81	0.78	0.82	0.79
2:00	0.84	0.84	0.81	0.94	0.99	0.97	0.80	0.82	0.81	0.78	0.82	0.79
3:00	0.85	0.84	0.81	0.94	1.00	0.96	0.80	0.83	0.81	0.79	0.82	0.80
4:00	0.85	0.84	0.80	0.93	0.99	0.94	0.79	0.82	0.80	0.80	0.83	0.81
5:00	0.86	0.86	0.81	0.93	1.00	0.93	0.80	0.83	0.81	0.79	0.82	0.80
6:00	0.95	1.23	0.87	0.92	1.02	0.99	0.91	1.07	0.96	1.02	1.01	1.02
7:00	1.05	1.95	1.09	0.96	1.05	1.23	1.06	1.56	1.21	1.49	1.15	1.40
8:00	1.11	2.41	1.64	1.01	1.07	1.47	1.17	1.71	1.33	1.74	1.14	1.58
9:00	1.03	2.04	1.61	0.98	1.03	1.17	1.05	1.20	1.09	1.44	0.93	1.31
10:00	1.01	1.60	1.22	1.00	1.02	1.05	0.96	0.99	0.97	1.13	0.94	1.08
11:00	1.05	1.40	1.07	1.03	1.02	1.01	0.95	0.94	0.94	1.03	0.94	1.01
12:00	1.12	1.35	1.00	1.03	1.02	1.01	0.96	0.94	0.95	1.04	0.95	1.02
13:00	1.19	1.36	0.97	1.05	1.03	1.02	0.97	0.95	0.97	1.10	0.96	1.06
14:00	1.38	1.47	1.12	1.12	1.05	1.04	1.04	0.97	1.02	1.17	1.06	1.14
15:00	1.94	1.42	1.17	1.50	1.05	1.08	1.24	1.05	1.18	1.38	1.07	1.30
16:00	2.35	1.50	0.97	1.91	1.12	1.11	1.58	1.13	1.45	1.62	1.18	1.51
17:00	2.44	1.62	0.99	1.90	1.59	1.09	1.82	1.26	1.66	1.80	1.25	1.66
18:00	2.00	1.52	0.96	1.49	1.43	1.04	1.43	1.13	1.34	1.49	1.09	1.39
19:00	1.29	1.19	0.93	1.12	1.04	1.00	0.96	0.94	0.96	1.00	0.94	0.98
20:00	1.02	1.00	0.88	1.05	1.00	0.98	0.87	0.89	0.88	0.86	0.88	0.86
21:00	0.98	0.97	0.85	1.02	0.98	0.97	0.84	0.87	0.85	0.83	0.86	0.83
22:00	0.99	1.01	0.85	1.00	0.97	0.97	0.83	0.86	0.83	0.80	0.85	0.82
23:00	0.97	0.92	0.83	1.00	0.96	0.96	0.81	0.86	0.83	0.79	0.85	0.80
FFS***	65 mph	65 mph	62 mph	59 mph	72 mph	70 mph	67 mph	66 mph	66 mph	67 mph	67 mph	67 mph

Maximum Travel Time Index.

Travel Time Index (TTI) is a measure of average conditions that indicates how much longer, **on average**, travel times are during congestion compared to during light traffic.

Real World Example: A TTI of 1.60 means that for a trip that usually takes 10 minutes in light traffic, a traveler should budget for an additional 6 minutes **on average**.



* Twelve-month weekday average from May 1st, 2022 to April 30th, 2023.

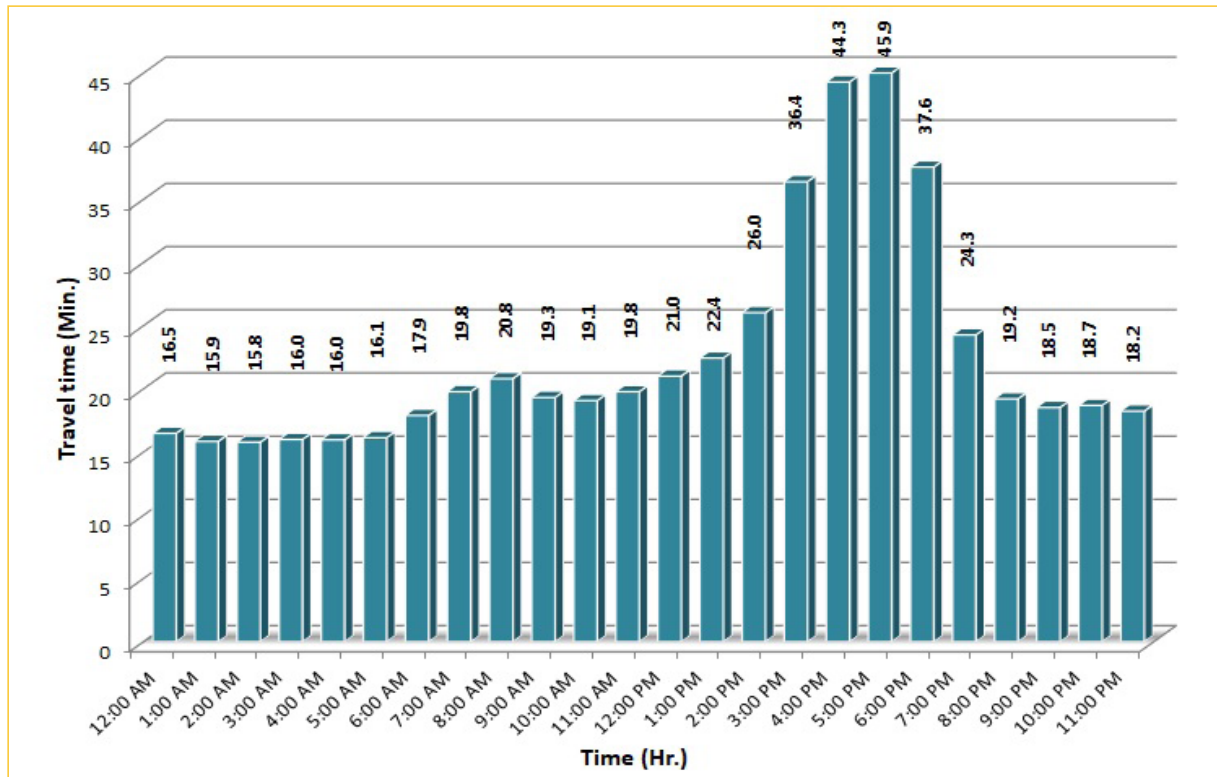
** Data obtained from Regional Integrated Transportation System (RITIS), Probe Data Analytics Suite.

*** Free Flow Speed.

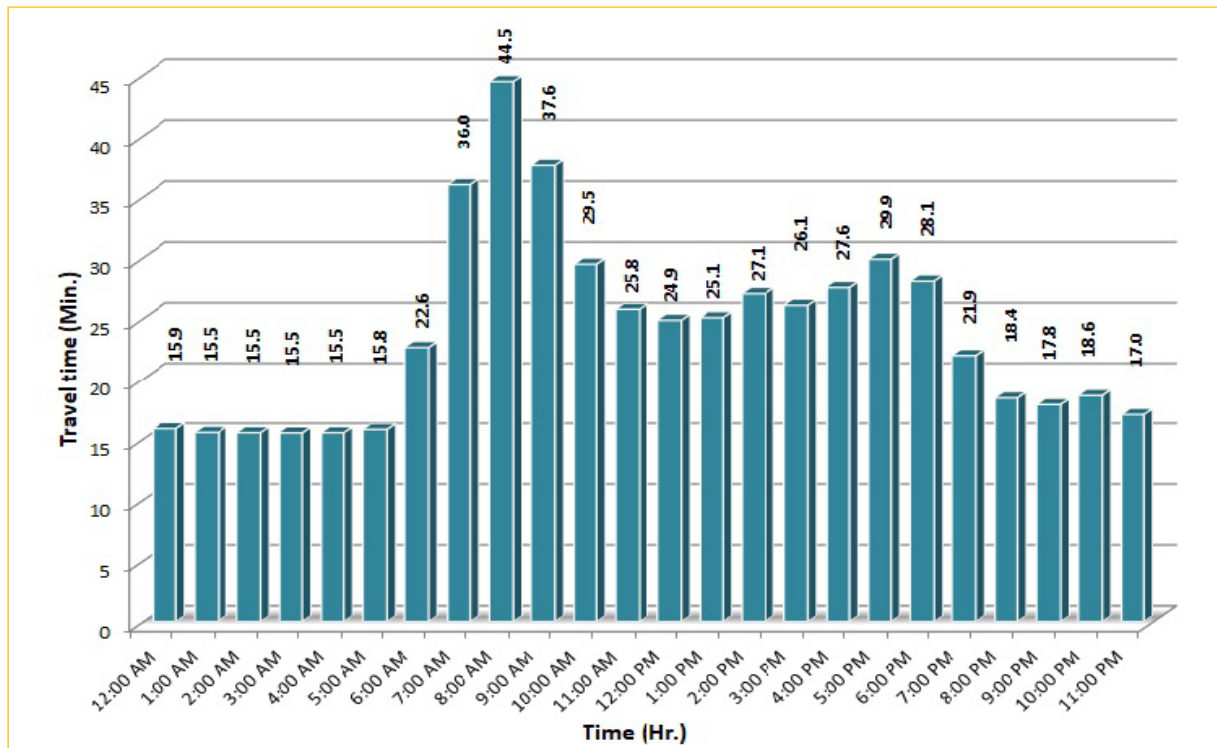
TRAVEL TIME RELIABILITY REPORT

Weekdays Travel Times by Time of Day*

I-95 Northbound: 17.3 Miles**
From: US-1
To: Miami-Dade / Broward County Line



I-95 Southbound: 17.3 Miles**
From: Miami-Dade / Broward County Line
To: US-1



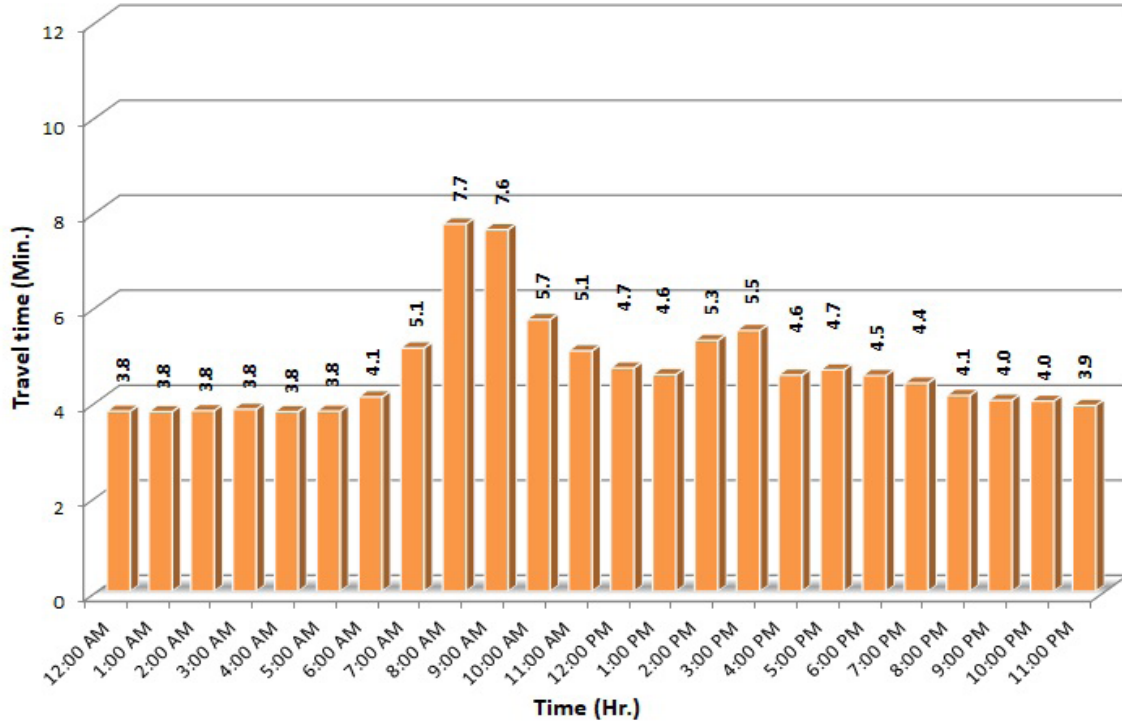
* Twelve-month weekday average from May 1st, 2022 to April 30th, 2023.

** Data obtained from Regional Integrated Transportation System (RITIS), Probe Data Analytics Suite. Excludes express lanes.

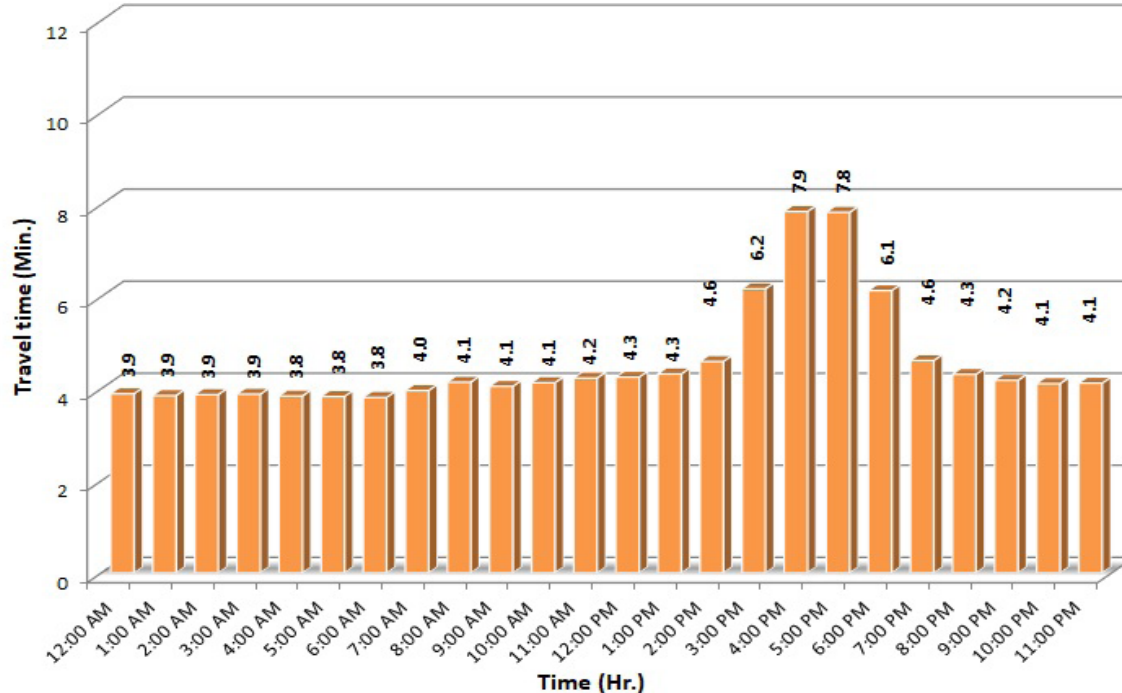
TRAVEL TIME RELIABILITY REPORT

Weekdays Travel Times by Time of Day*

I-195 Eastbound: 4.9 Miles**
From: West of North Miami Avenue
To: West of Alton Road



I-195 Westbound: 4.9 Miles**
From: West of Alton Road
To: West of North Miami Avenue



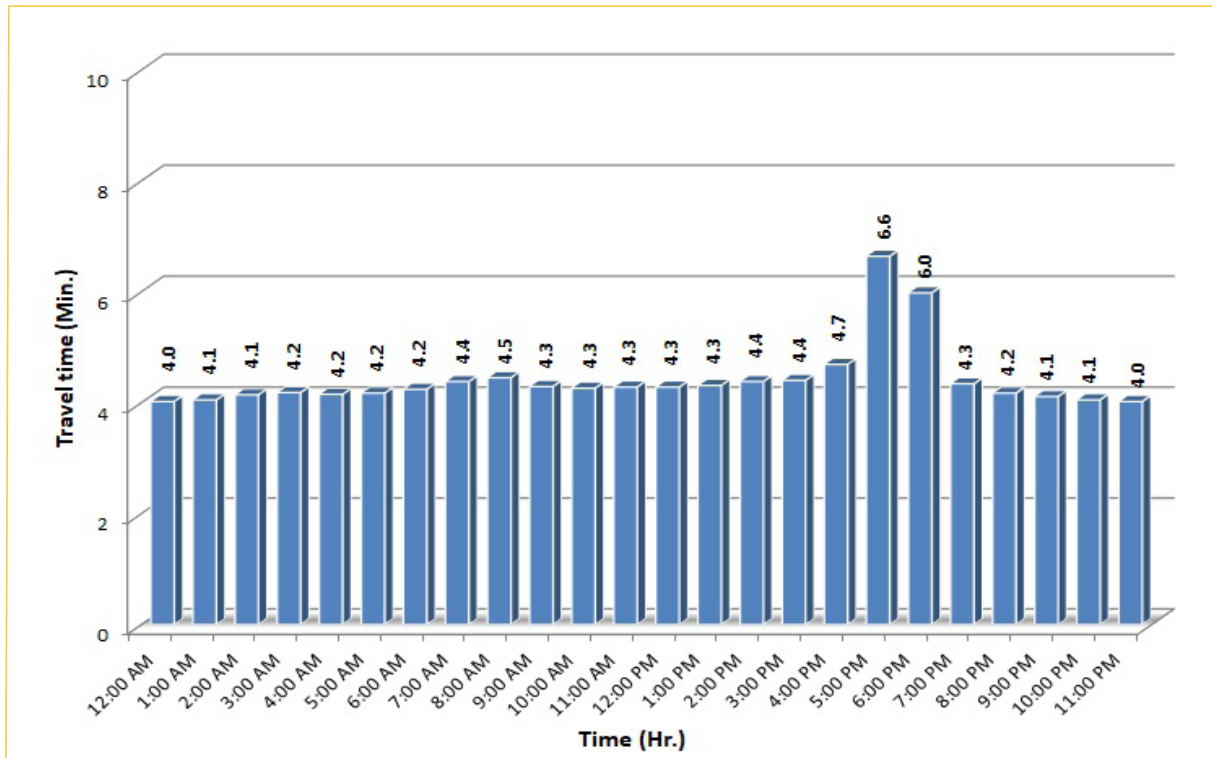
* Twelve-month weekday average from May 1st, 2022 to April 30th, 2023.

** Data obtained from Regional Integrated Transportation System (RITIS), Probe Data Analytics Suite. Excludes express lanes.

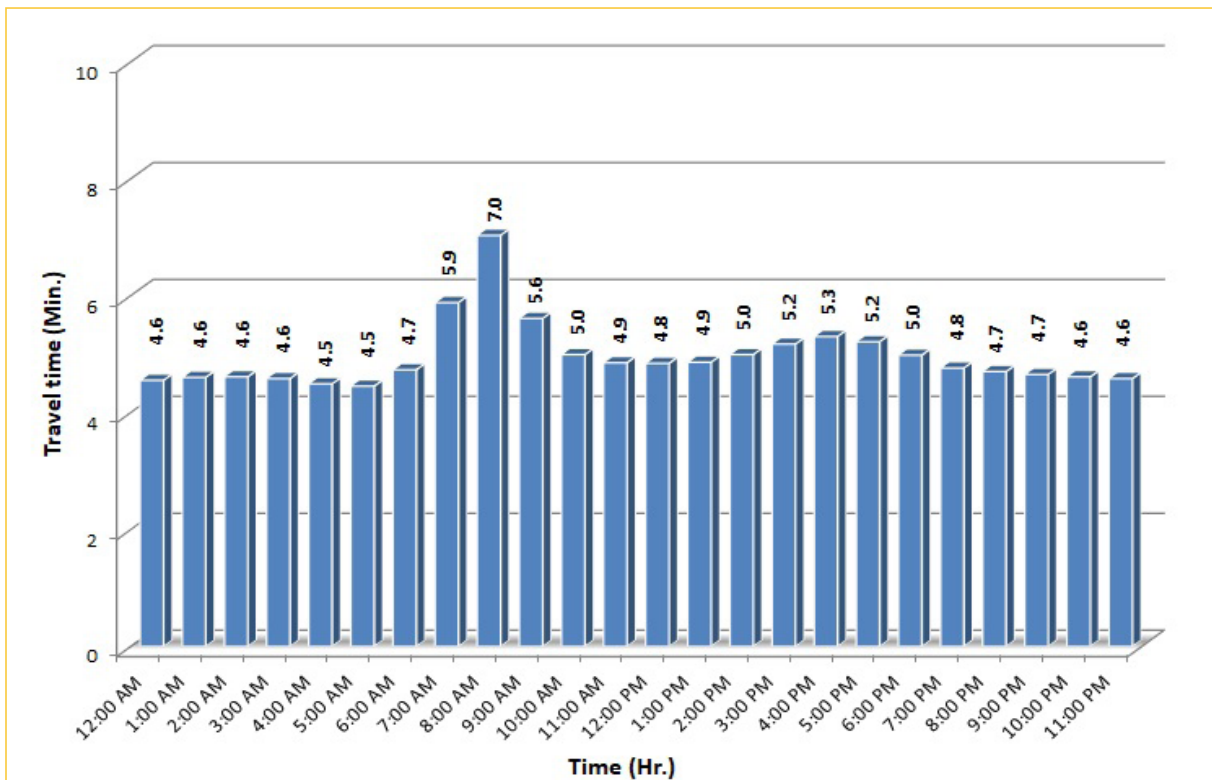
TRAVEL TIME RELIABILITY REPORT

Weekdays Travel Times by Time of Day*

I-75 Northbound: 5.4 Miles**
From: West of SR 826
To: North of Florida's Turnpike



I-75 Southbound: 5.4 Miles**
From: North of Florida's Turnpike
To: West of SR 826



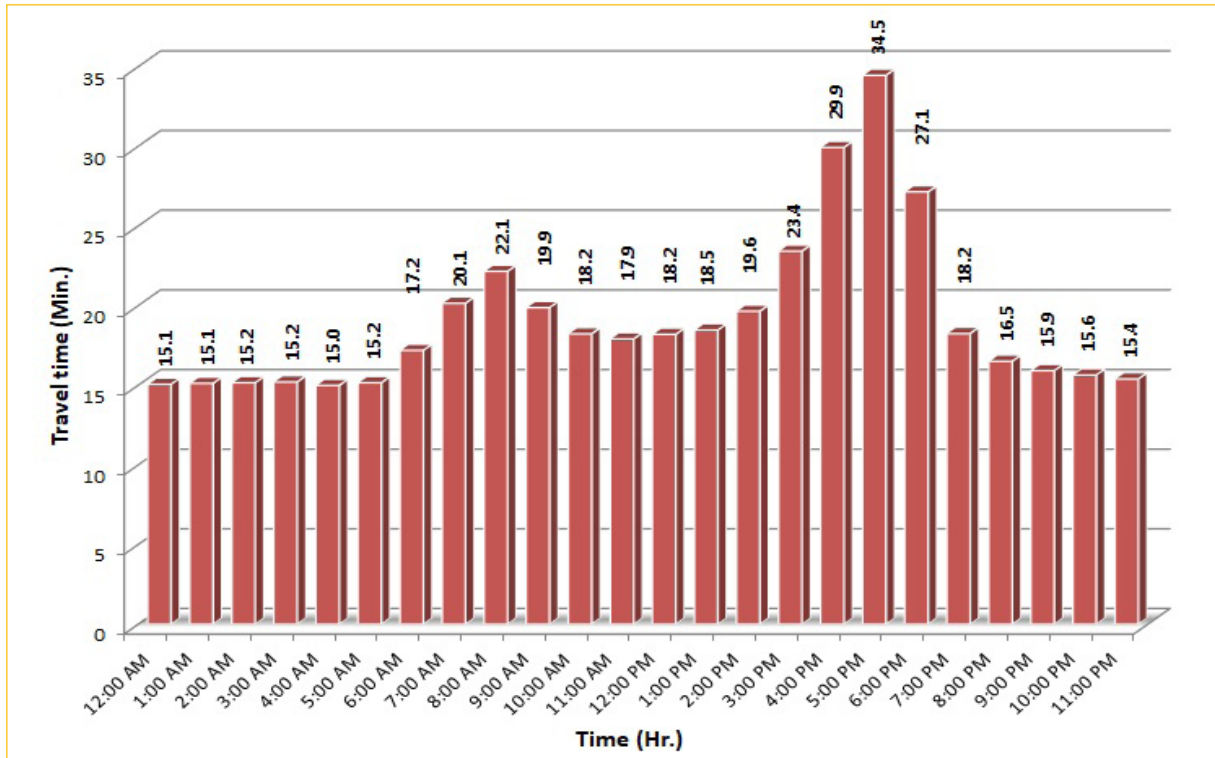
* Twelve-month weekday average from May 1st, 2022 to April 30th, 2023.

** Data obtained from Regional Integrated Transportation System (RITIS), Probe Data Analytics Suite. Excludes express lanes.


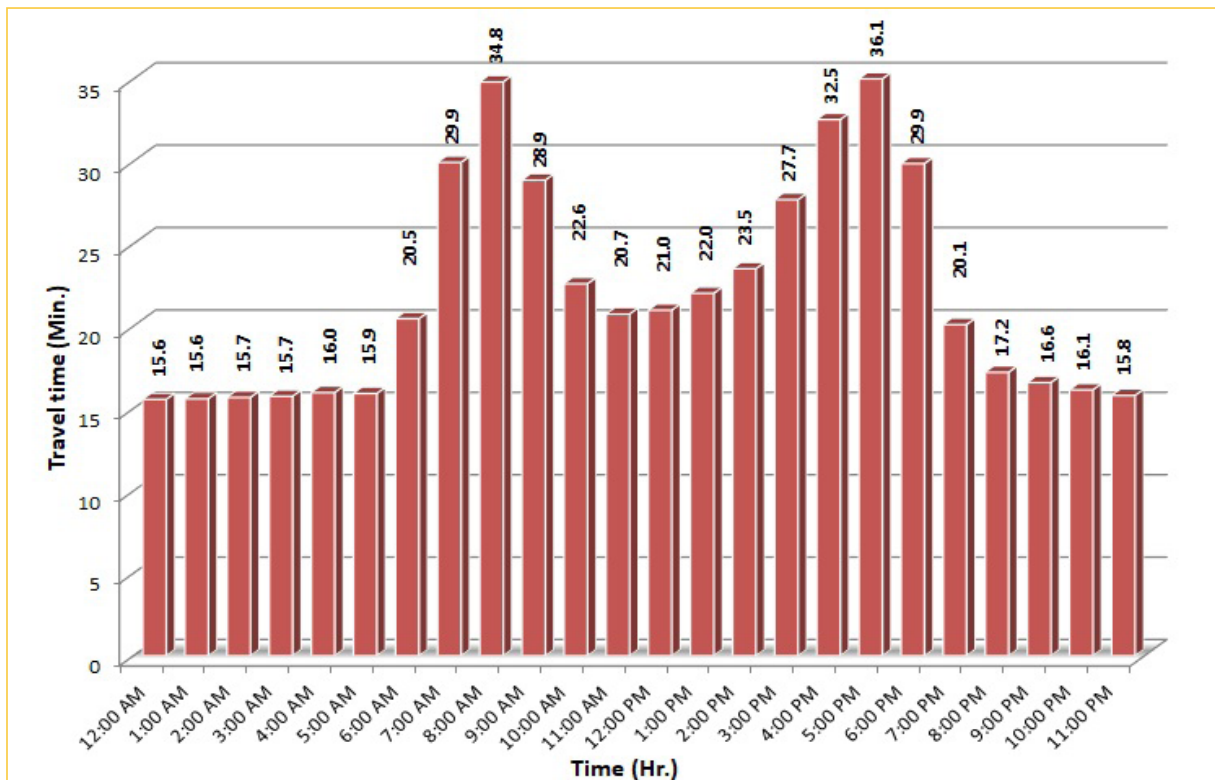
TRAVEL TIME RELIABILITY REPORT

Weekdays Travel Times by Time of Day*

SR 826 Northbound: 16.6 Miles**
From: US-1
To: North of NW 154 Street

SR 826 Southbound: 16.6 Miles**
From: North of NW 154 Street
To: US-1

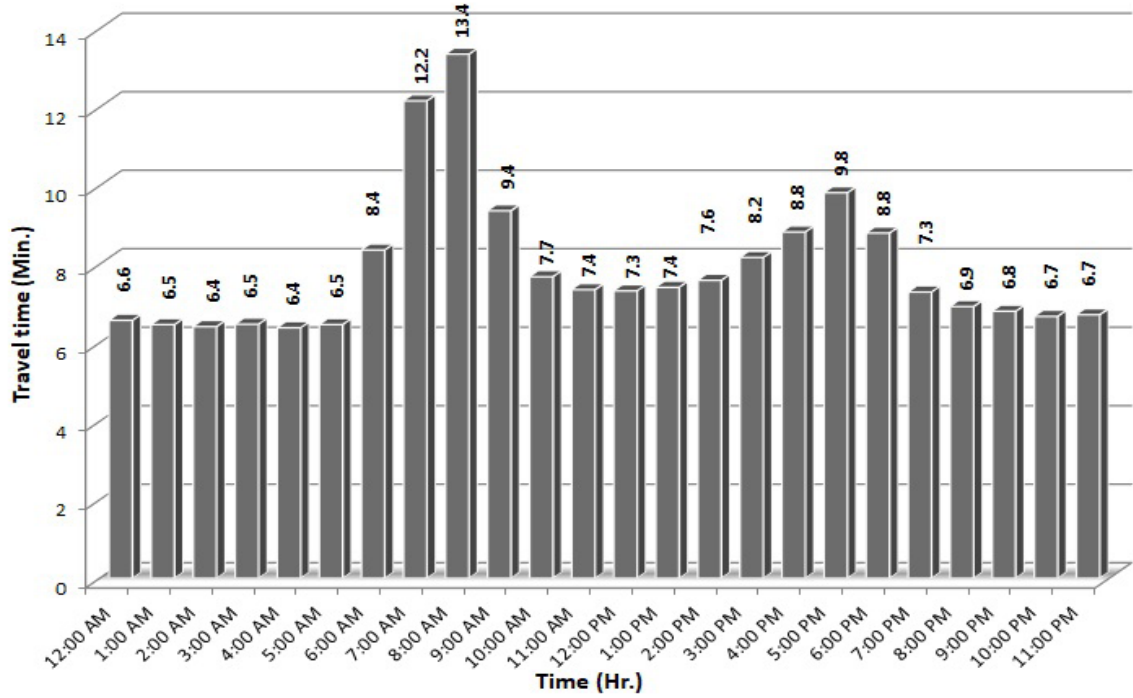
* Twelve-month weekday average from May 1st, 2022 to April 30th, 2023.

** Data obtained from Regional Integrated Transportation System (RITIS), Probe Data Analytics Suite. Excludes express lanes.

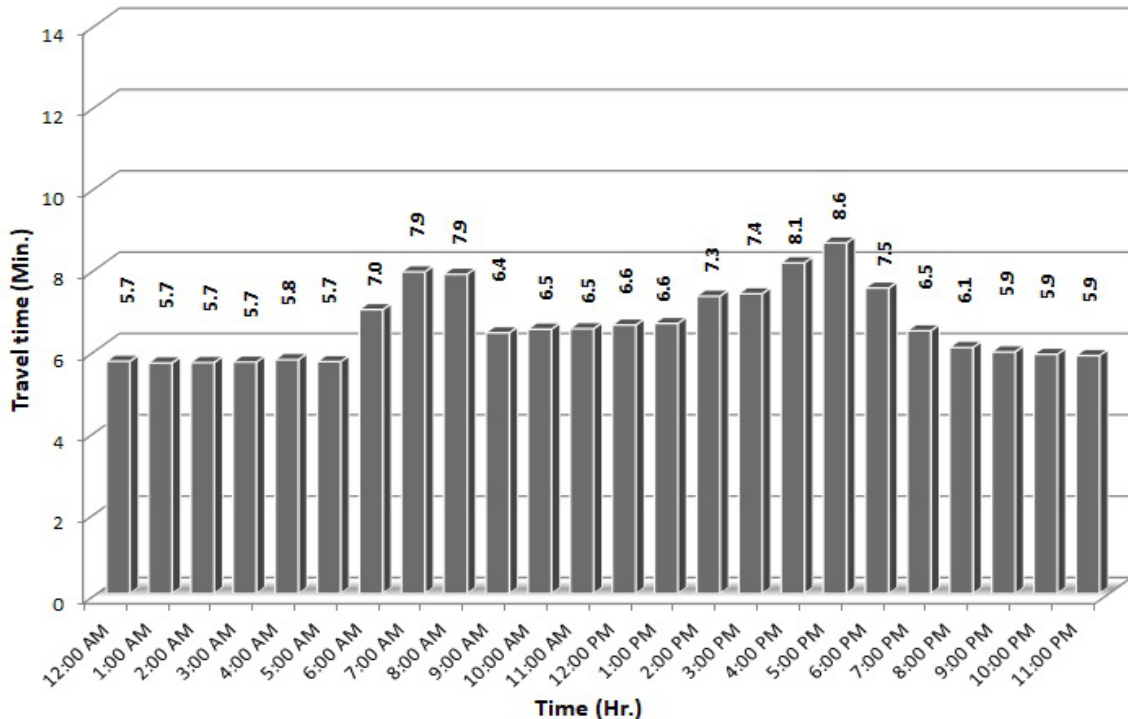
TRAVEL TIME RELIABILITY REPORT

Weekdays Travel Times by Time of Day*

SR 826 Eastbound: 7.1 Miles**
From: West of NW 67 Avenue
To: I-95

SR 826 Westbound: 7.1 Miles**
From: I-95
To: West of NW 67 Avenue

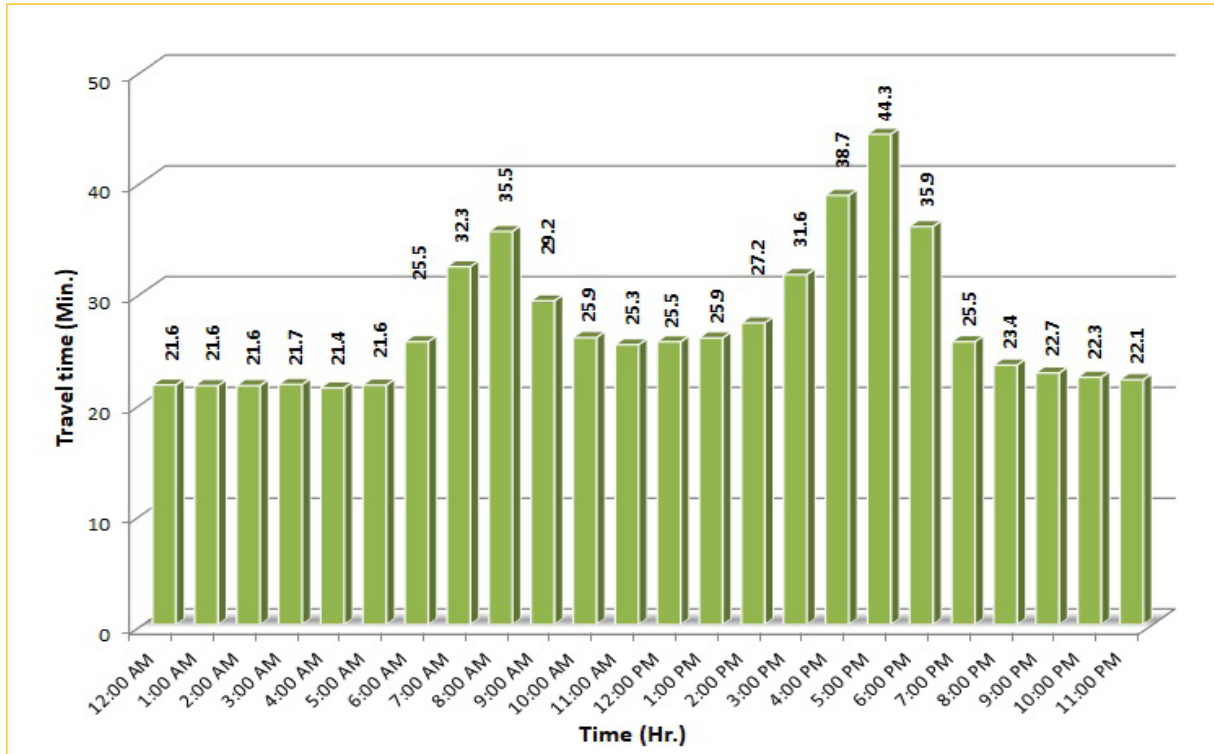
* Twelve-month weekday average from May 1st, 2022 to April 30th, 2023.

** Data obtained from Regional Integrated Transportation System (RITIS), Probe Data Analytics Suite. Excludes express lanes.

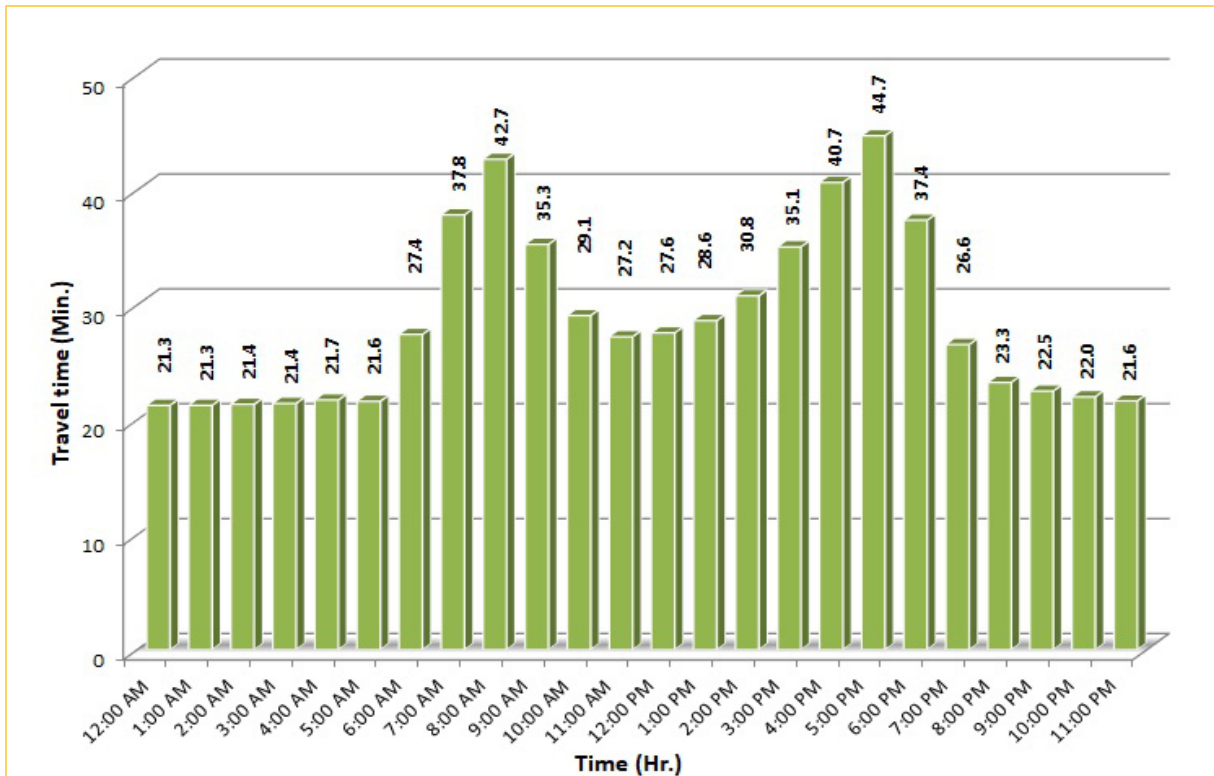
TRAVEL TIME RELIABILITY REPORT

Weekdays Travel Times by Time of Day*

SR 826 Northbound/Eastbound : 24.2 Miles**
From: US-1
To: I-95



SR 826 Southbound/Westbound: 24.2 Miles**
From: I-95
To: US-1



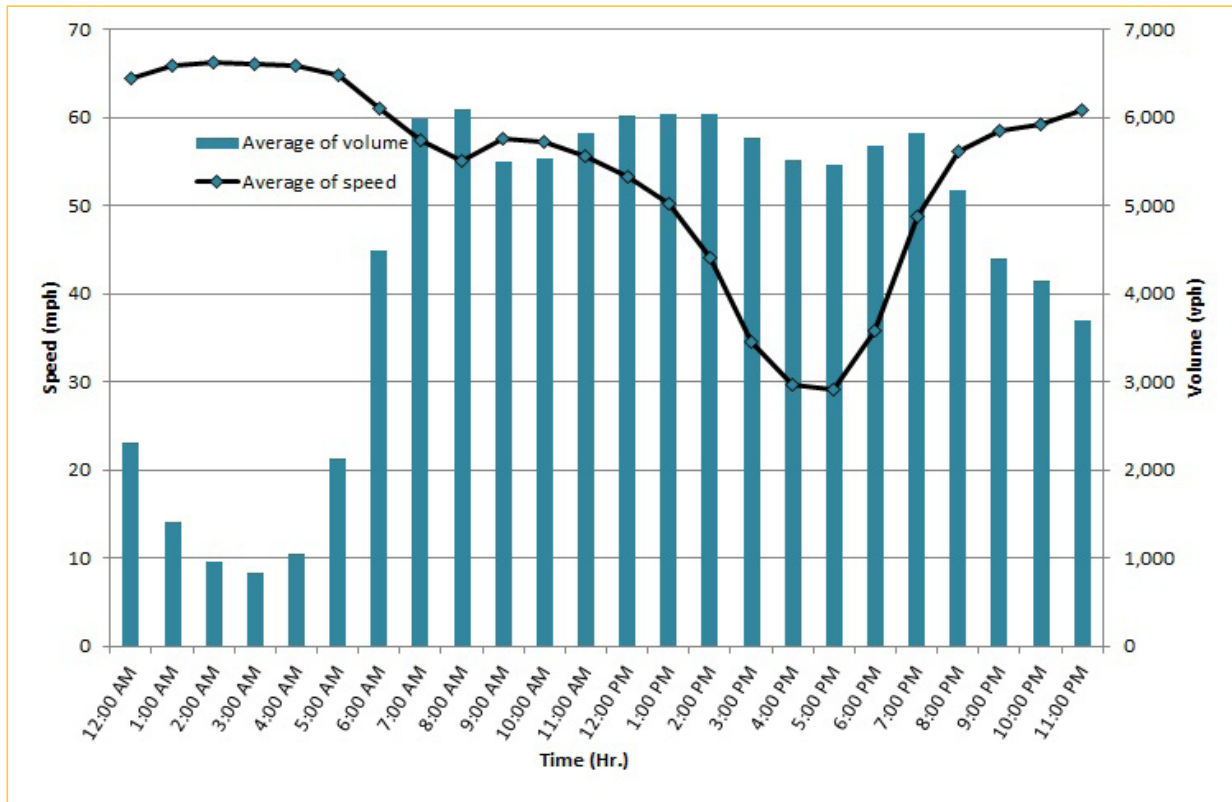
* Twelve-month weekday average from May 1st, 2022 to April 30th, 2023.

** Data obtained from Regional Integrated Transportation System (RITIS), Probe Data Analytics Suite. Excludes express lanes.

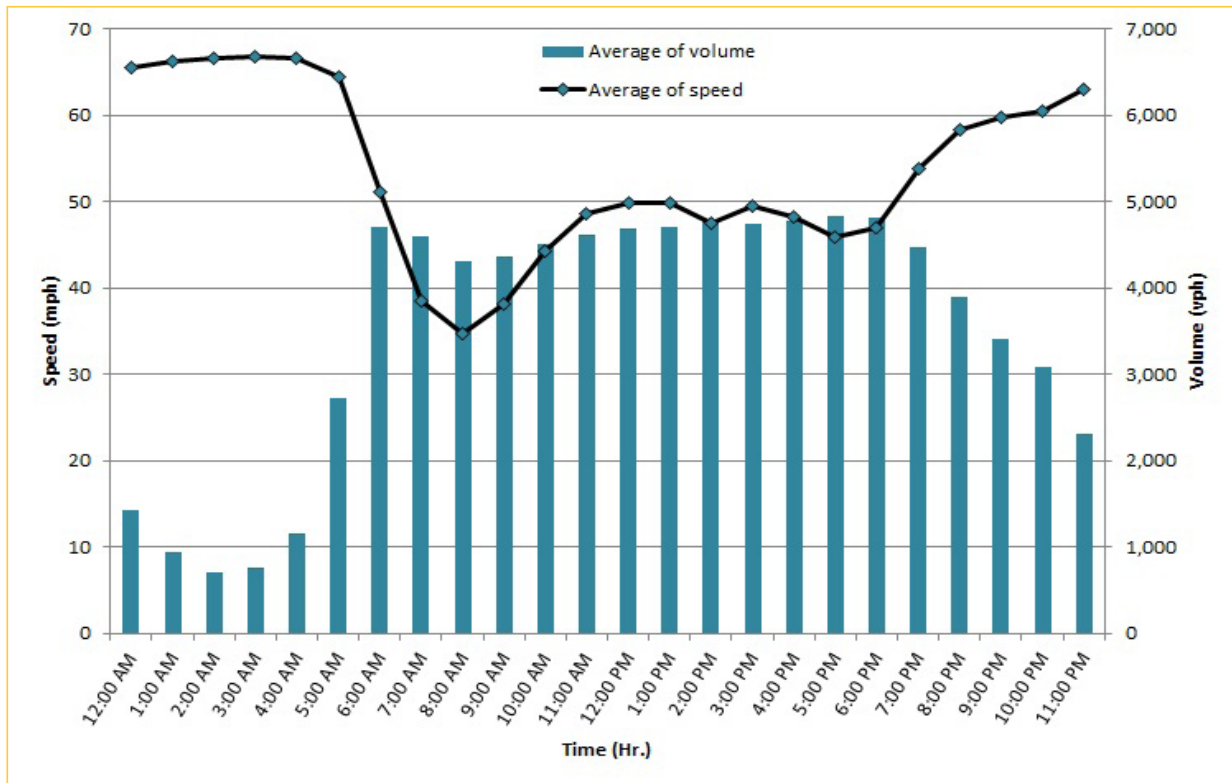
TRAVEL TIME RELIABILITY REPORT

Weekdays Speeds and Volumes by Time of Day*

I-95 Northbound: 17.3 Miles**
From: US-1
To: Miami-Dade / Broward County Line



I-95 Southbound: 17.3 Miles**
From: Miami-Dade / Broward County Line
To: US-1



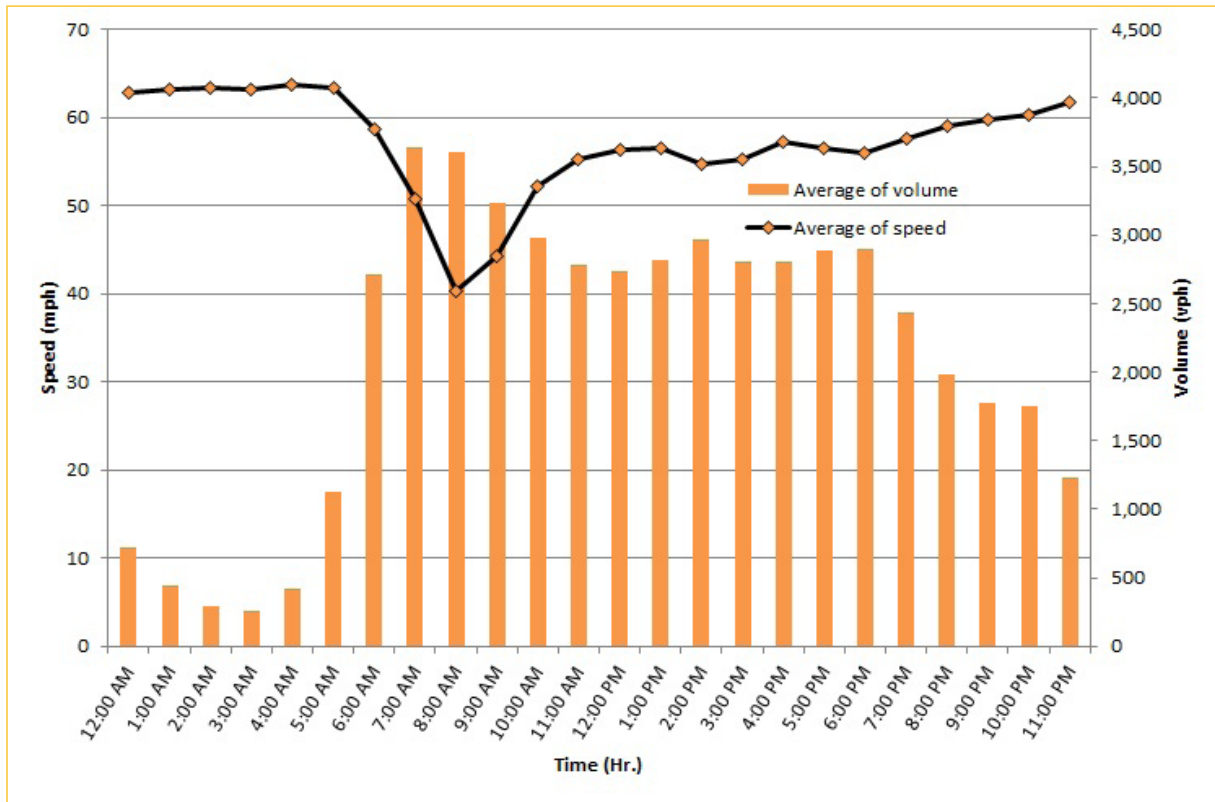
* Twelve-month weekday average from May 1st, 2022 to April 30th, 2023.

** Data obtained from Regional Integrated Transportation System (RITIS), Probe Data Analytics Suite. Excludes express lanes.

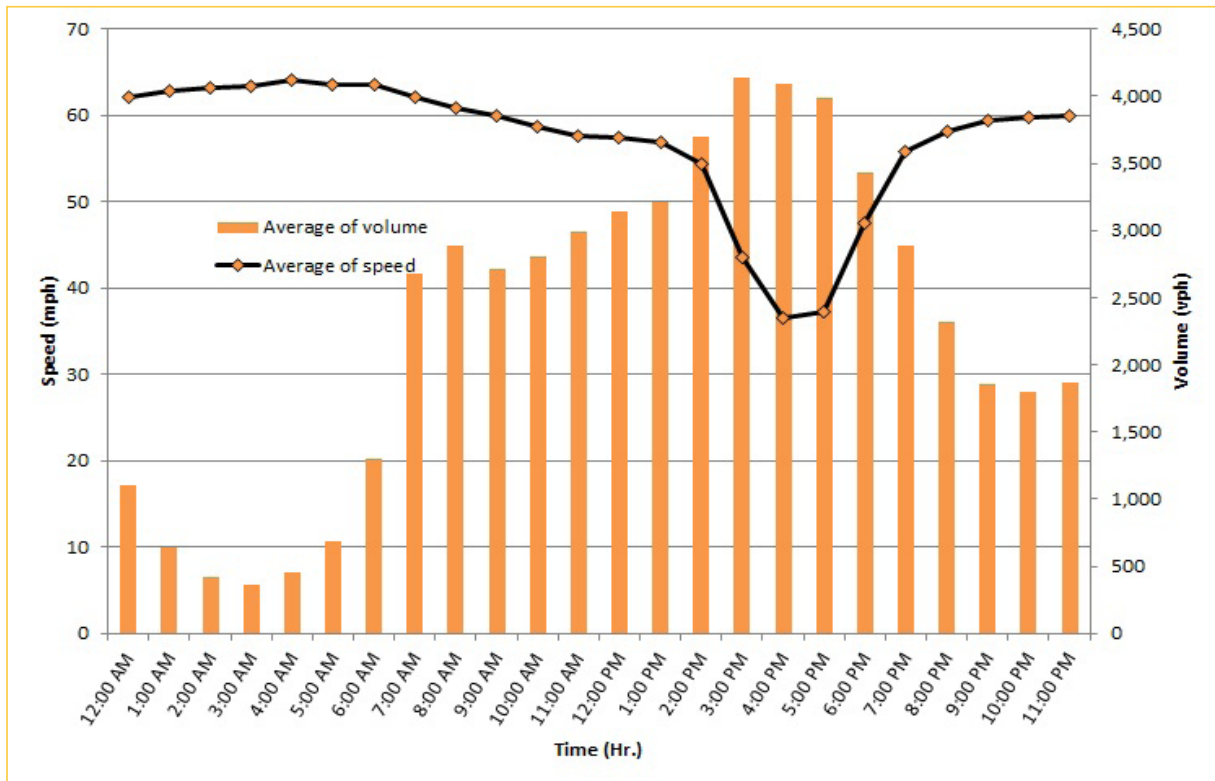
TRAVEL TIME RELIABILITY REPORT

Weekdays Speeds and Volumes by Time of Day*

I-195 Eastbound: 4.9 Miles**
From: West of North Miami Avenue
To: West of Alton Road



I-195 Westbound: 4.9 Miles**
From: West of Alton Road
To: West of North Miami Avenue



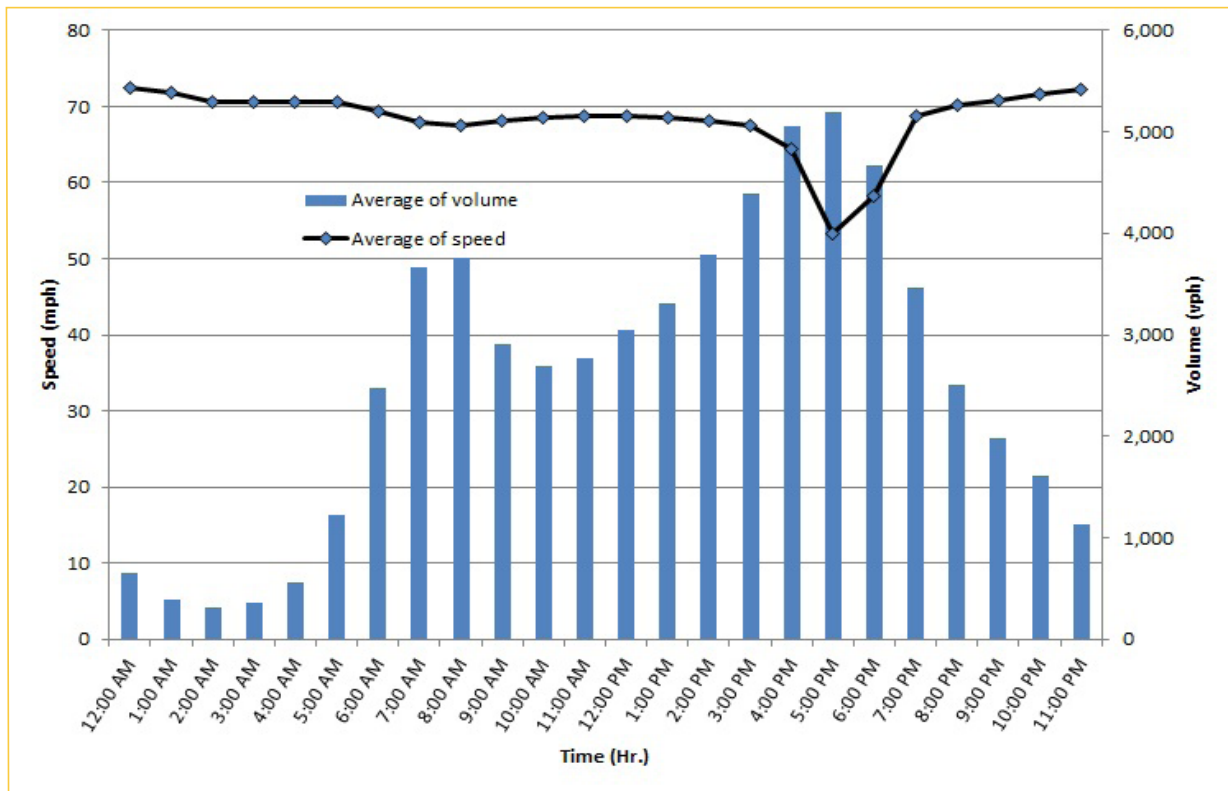
* Twelve-month weekday average from May 1st, 2022 to April 30th, 2023.

** Data obtained from Regional Integrated Transportation System (RITIS), Probe Data Analytics Suite. Excludes express lanes.

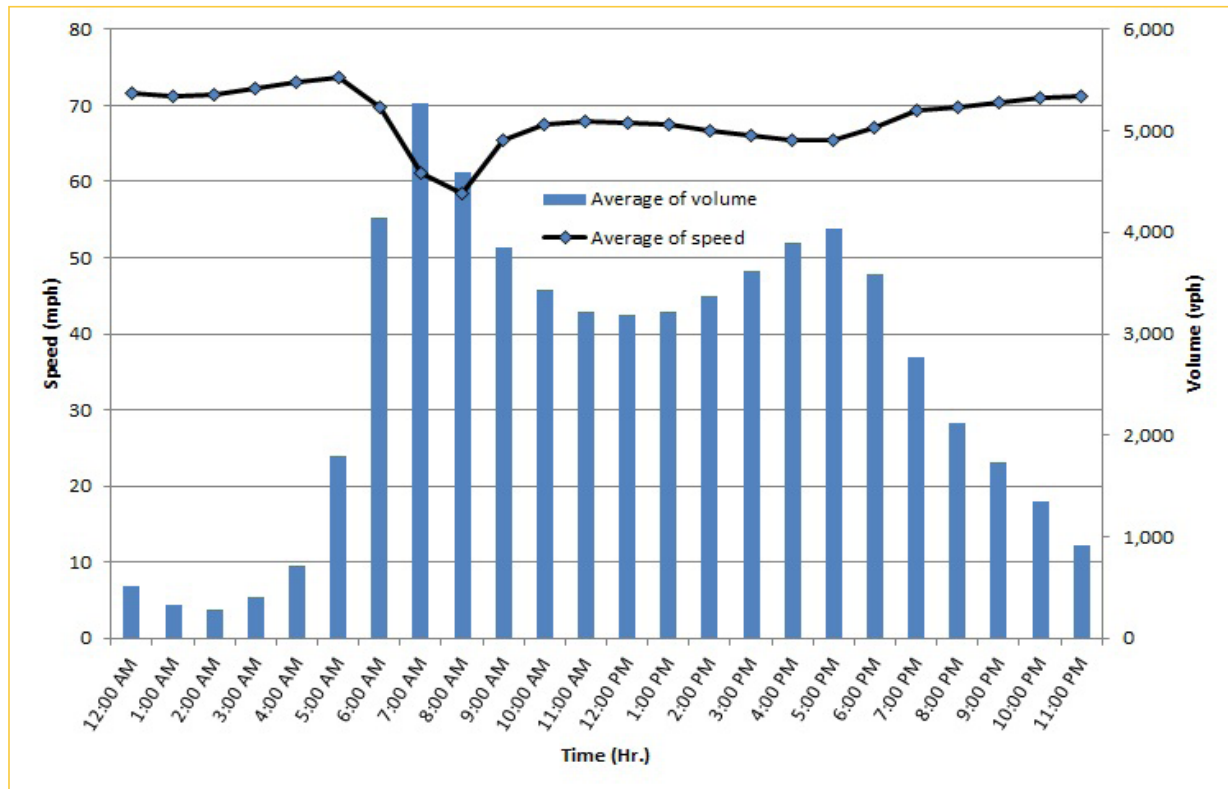
TRAVEL TIME RELIABILITY REPORT

Weekdays Speeds and Volumes by Time of Day*

I-75 Northbound: 5.4 Miles **
From: West of SR 826
To: North of Florida's Turnpike



I-75 Southbound: 5.4 Miles **
From: North of Florida's Turnpike
To: West of SR 826




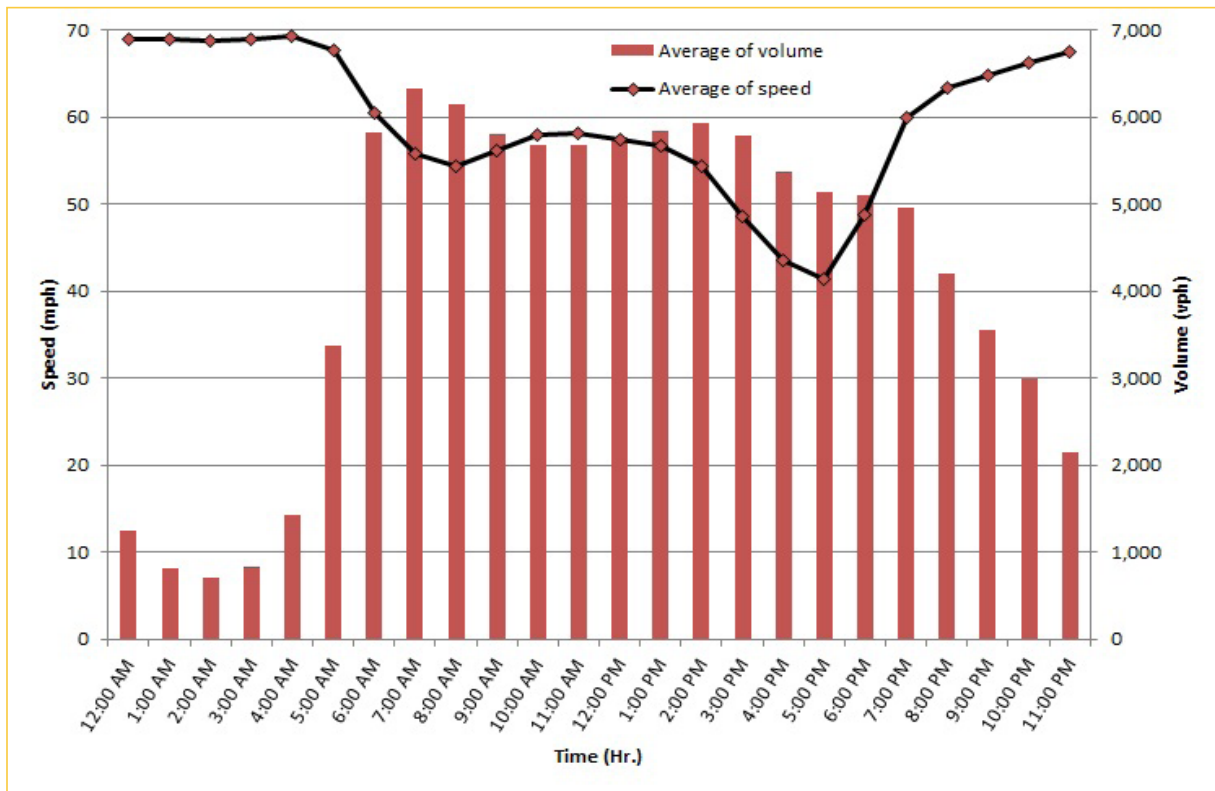
* Twelve-month weekday average from May 1st, 2022 to April 30th, 2023.

** Data obtained from Regional Integrated Transportation System (RITIS), Probe Data Analytics Suite. Excludes express lanes.

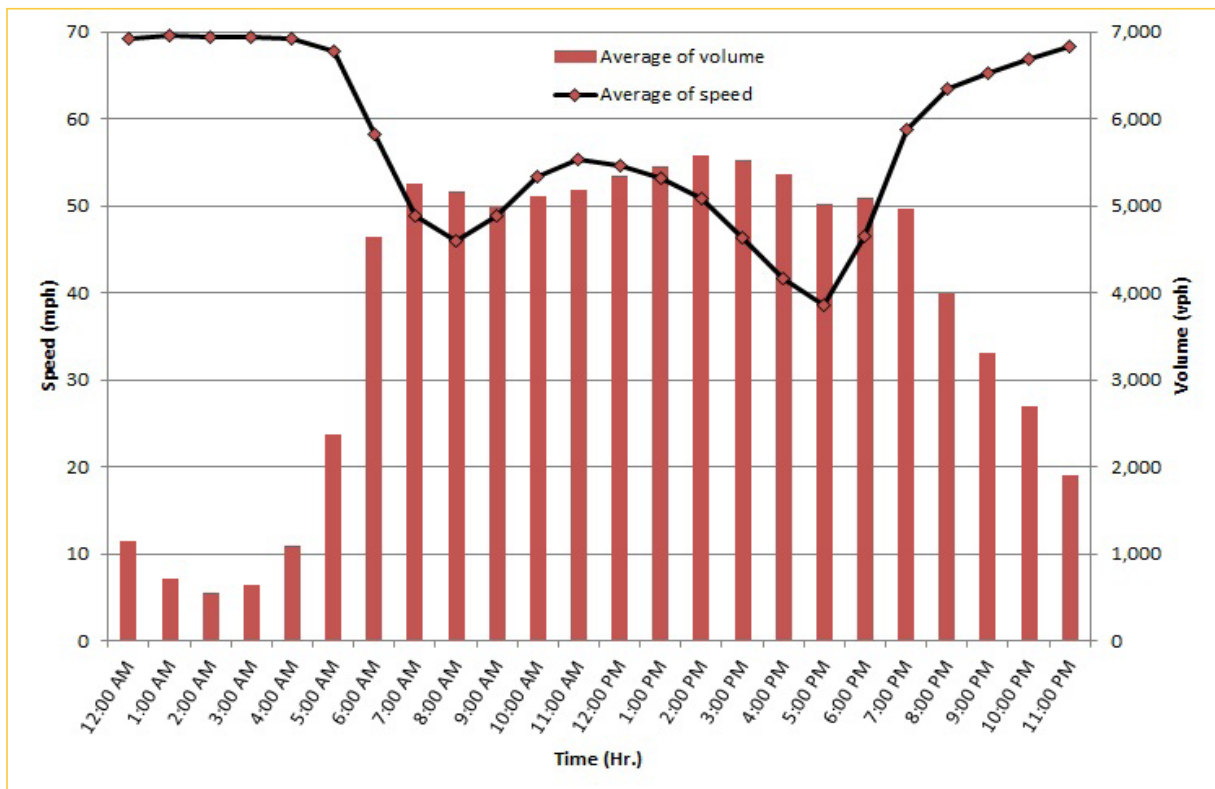
TRAVEL TIME RELIABILITY REPORT

Weekdays Speeds and Volumes by Time of Day*

SR 826 Northbound: 16.6 Miles**
From: US-1
To: North of NW 154 Street

SR 826 Southbound: 16.6 Miles**
From: North of NW 154 Street
To: US-1

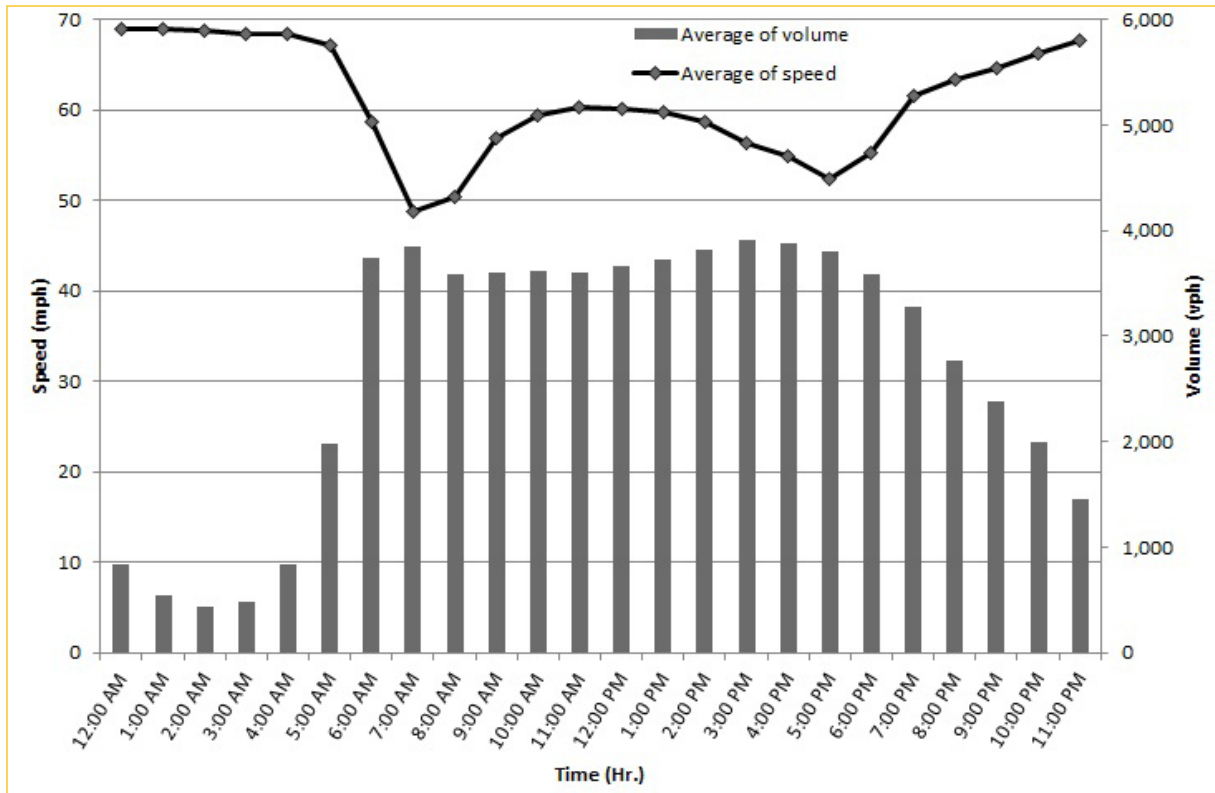
* Twelve-month weekday average from May 1st, 2022 to April 30th, 2023.

** Data obtained from Regional Integrated Transportation System (RITIS), Probe Data Analytics Suite. Excludes express lanes.

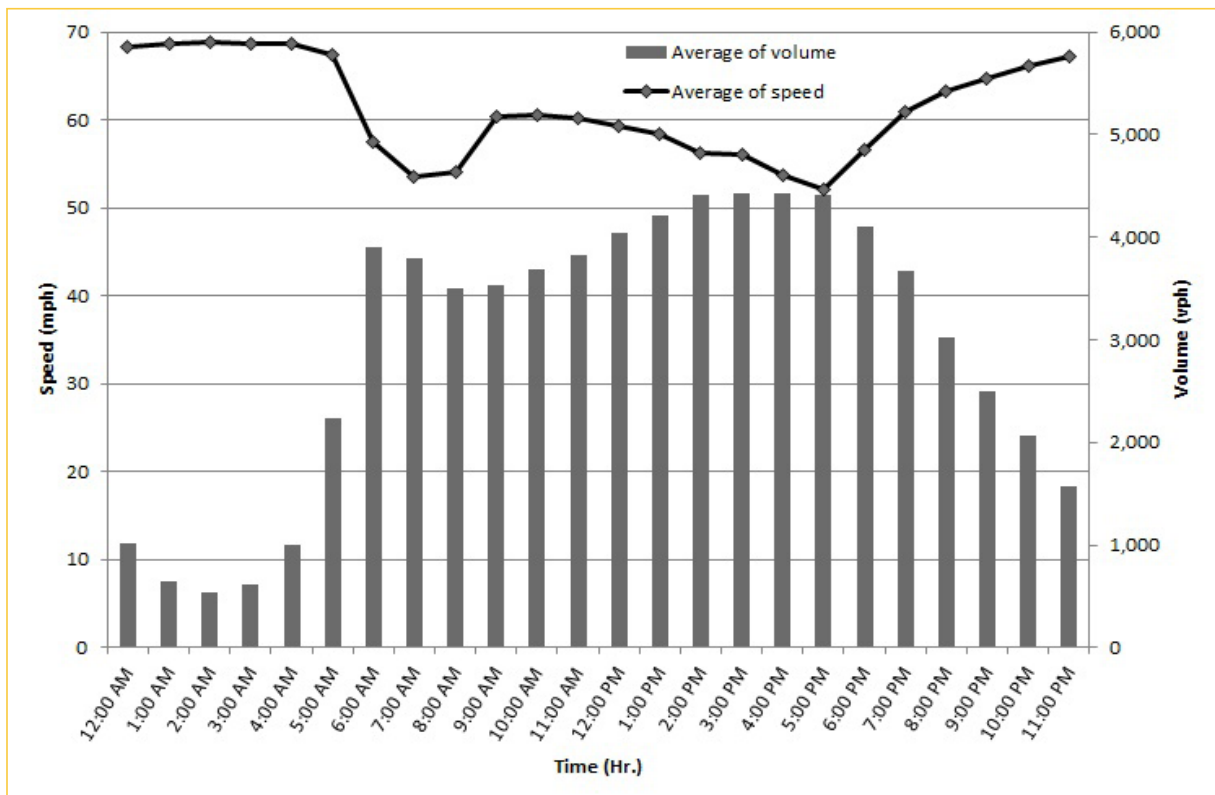
TRAVEL TIME RELIABILITY REPORT

Weekdays Speeds and Volumes by Time of Day*

SR 826 Eastbound: 7.1 Miles**
From: West of NW 67 Avenue
To: I-95

SR 826 Westbound: 7.1 Miles**
From: I-95
To: West of NW 67 Avenue

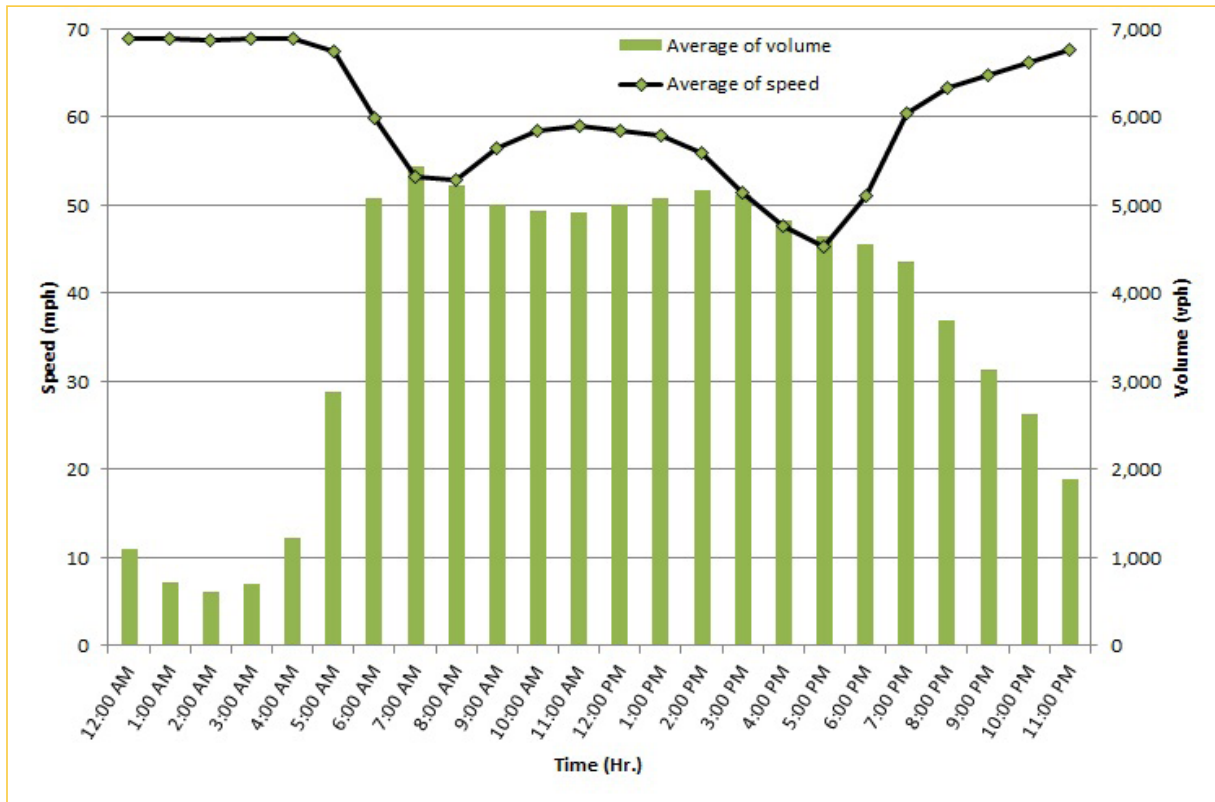
* Twelve-month weekday average from May 1st, 2022 to April 30th, 2023.

** Data obtained from Regional Integrated Transportation System (RITIS), Probe Data Analytics Suite. Excludes express lanes.

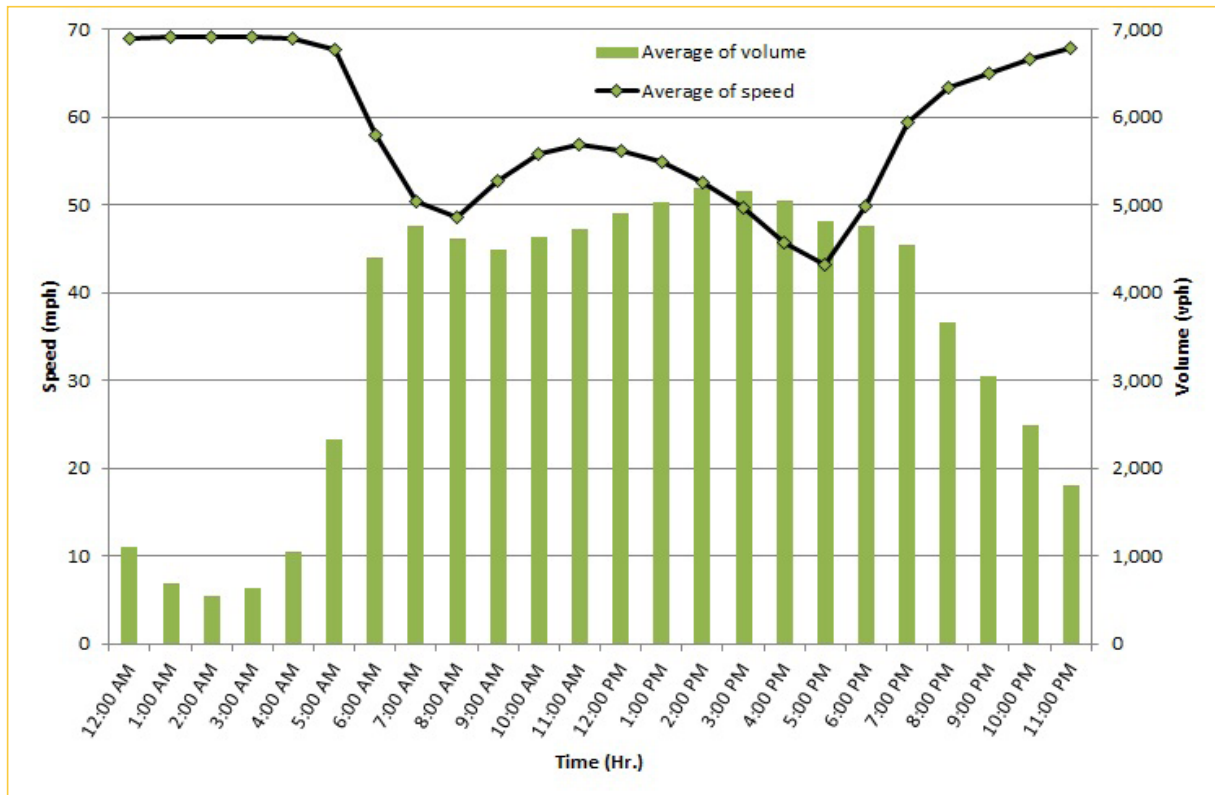
TRAVEL TIME RELIABILITY REPORT

Weekdays Speeds and Volumes by Time of Day*

SR 826 Northbound/Eastbound : 24.2 Miles**
From: US-1
To: I-95



SR 826 Southbound/Westbound: 24.2 Miles**
From: I-95
To: US-1



* Twelve-month weekday average from May 1st, 2022 to April 30th, 2023.

** Data obtained from Regional Integrated Transportation System (RITIS), Probe Data Analytics Suite. Excludes express lanes.