

## TRAVEL TIME RELIABILITY REPORT

### Travel Time Index by Roadway\*

| Time   | I-95** |        | I-195** |        | I-75** |        | SR 826** |        |        |        |        |        |
|--------|--------|--------|---------|--------|--------|--------|----------|--------|--------|--------|--------|--------|
|        | NB     | SB     | EB      | WB     | NB     | SB     | NB       | EB     | NE     | SB     | WB     | SW     |
| 0:00   | 0.88   | 0.84   | 0.81    | 0.95   | 0.95   | 0.95   | 0.80     | 0.84   | 0.81   | 0.77   | 0.82   | 0.79   |
| 1:00   | 0.84   | 0.83   | 0.80    | 0.94   | 0.96   | 0.96   | 0.80     | 0.83   | 0.81   | 0.77   | 0.82   | 0.79   |
| 2:00   | 0.84   | 0.83   | 0.81    | 0.94   | 0.98   | 0.96   | 0.81     | 0.82   | 0.81   | 0.78   | 0.82   | 0.79   |
| 3:00   | 0.85   | 0.84   | 0.82    | 0.94   | 0.99   | 0.95   | 0.80     | 0.83   | 0.81   | 0.79   | 0.82   | 0.80   |
| 4:00   | 0.85   | 0.84   | 0.81    | 0.94   | 1.00   | 0.94   | 0.79     | 0.82   | 0.80   | 0.80   | 0.83   | 0.81   |
| 5:00   | 0.85   | 0.85   | 0.80    | 0.93   | 0.99   | 0.93   | 0.80     | 0.83   | 0.81   | 0.79   | 0.82   | 0.80   |
| 6:00   | 0.94   | 1.14   | 0.86    | 0.93   | 1.00   | 0.99   | 0.90     | 1.00   | 0.93   | 0.97   | 1.02   | 0.98   |
| 7:00   | 1.03   | 1.73   | 1.00    | 0.94   | 1.03   | 1.28   | 1.04     | 1.46   | 1.17   | 1.33   | 1.25   | 1.31   |
| 8:00   | 1.10   | 2.07   | 1.54    | 0.95   | 1.05   | 1.55   | 1.14     | 1.57   | 1.26   | 1.57   | 1.27   | 1.49   |
| 9:00   | 1.02   | 1.78   | 1.62    | 0.97   | 1.02   | 1.14   | 1.02     | 1.13   | 1.06   | 1.32   | 0.98   | 1.23   |
| 10:00  | 1.00   | 1.43   | 1.19    | 0.99   | 1.01   | 1.01   | 0.94     | 0.98   | 0.95   | 1.08   | 0.93   | 1.04   |
| 11:00  | 1.02   | 1.29   | 1.03    | 1.02   | 1.01   | 1.00   | 0.94     | 0.95   | 0.94   | 1.03   | 0.92   | 1.00   |
| 12:00  | 1.09   | 1.29   | 0.98    | 1.02   | 1.01   | 1.00   | 0.96     | 0.97   | 0.96   | 1.04   | 0.94   | 1.02   |
| 13:00  | 1.13   | 1.32   | 0.97    | 1.03   | 1.01   | 1.01   | 0.97     | 0.98   | 0.97   | 1.07   | 0.98   | 1.04   |
| 14:00  | 1.33   | 1.41   | 1.10    | 1.08   | 1.04   | 1.03   | 1.03     | 1.00   | 1.02   | 1.12   | 1.01   | 1.09   |
| 15:00  | 1.82   | 1.36   | 1.17    | 1.41   | 1.05   | 1.06   | 1.23     | 1.04   | 1.18   | 1.29   | 1.09   | 1.24   |
| 16:00  | 2.19   | 1.37   | 0.99    | 1.80   | 1.11   | 1.08   | 1.52     | 1.12   | 1.40   | 1.47   | 1.17   | 1.40   |
| 17:00  | 2.29   | 1.47   | 0.99    | 1.77   | 1.52   | 1.10   | 1.72     | 1.21   | 1.57   | 1.61   | 1.27   | 1.52   |
| 18:00  | 1.85   | 1.40   | 0.97    | 1.37   | 1.40   | 1.04   | 1.36     | 1.11   | 1.29   | 1.36   | 1.09   | 1.29   |
| 19:00  | 1.23   | 1.16   | 0.94    | 1.08   | 1.02   | 0.98   | 0.96     | 0.94   | 0.96   | 0.96   | 0.92   | 0.95   |
| 20:00  | 1.01   | 0.98   | 0.89    | 1.02   | 0.99   | 0.98   | 0.88     | 0.89   | 0.88   | 0.85   | 0.88   | 0.86   |
| 21:00  | 0.95   | 0.95   | 0.86    | 1.01   | 0.98   | 0.97   | 0.84     | 0.86   | 0.85   | 0.82   | 0.87   | 0.83   |
| 22:00  | 0.99   | 0.97   | 0.85    | 0.99   | 0.96   | 0.97   | 0.83     | 0.85   | 0.84   | 0.80   | 0.86   | 0.82   |
| 23:00  | 0.98   | 0.91   | 0.83    | 1.02   | 0.95   | 0.95   | 0.81     | 0.86   | 0.82   | 0.79   | 0.85   | 0.81   |
| FFS*** | 65 mph | 66 mph | 62 mph  | 59 mph | 73 mph | 70 mph | 66 mph   | 67 mph | 66 mph | 68 mph | 67 mph | 67 mph |

Maximum Travel Time Index.

**Travel Time Index (TTI)** is a measure of average conditions that indicates how much longer, **on average**, travel times are during congestion compared to during light traffic.

**Real World Example:** A TTI of 1.60 means that for a trip that usually takes 10 minutes in light traffic, a traveler should budget for an additional 6 minutes **on average**.



\* Twelve-month weekday average from October 1st, 2021 to September 30th, 2022.

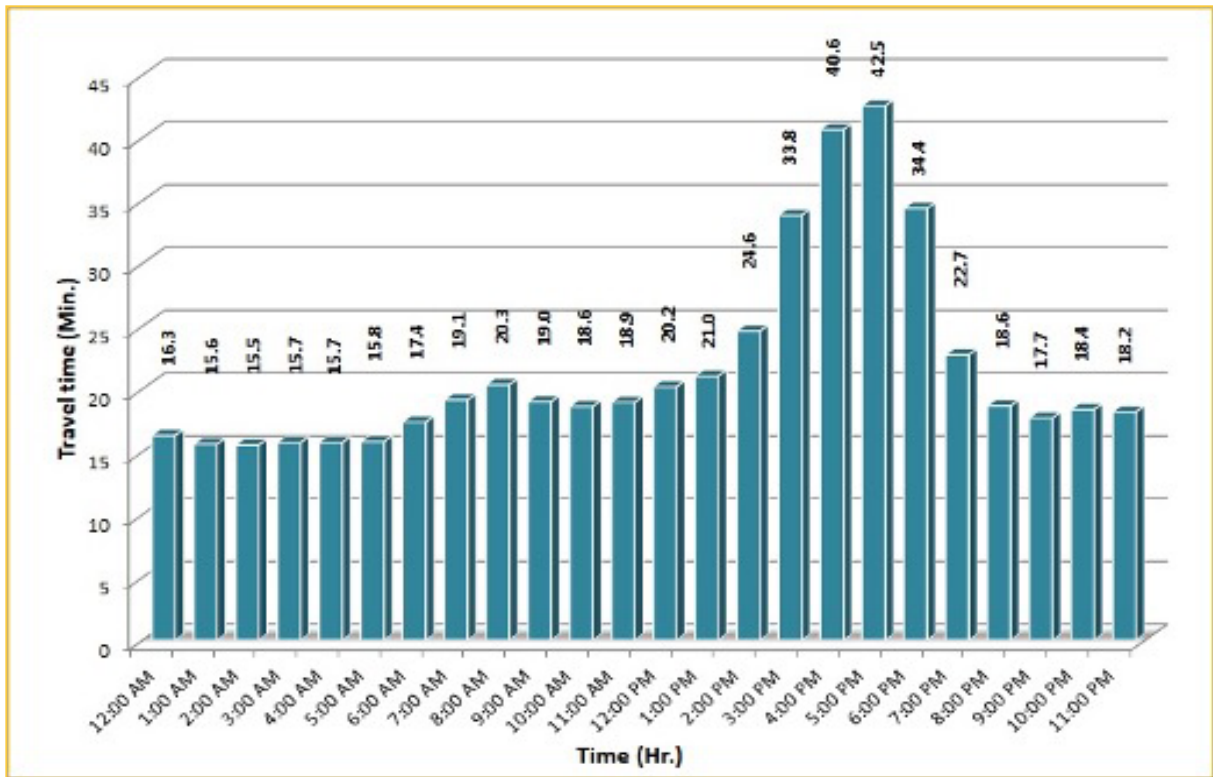
\*\* Data obtained from Regional Integrated Transportation System (RITIS), Probe Data Analytics Suite.

\*\*\* Free Flow Speed.

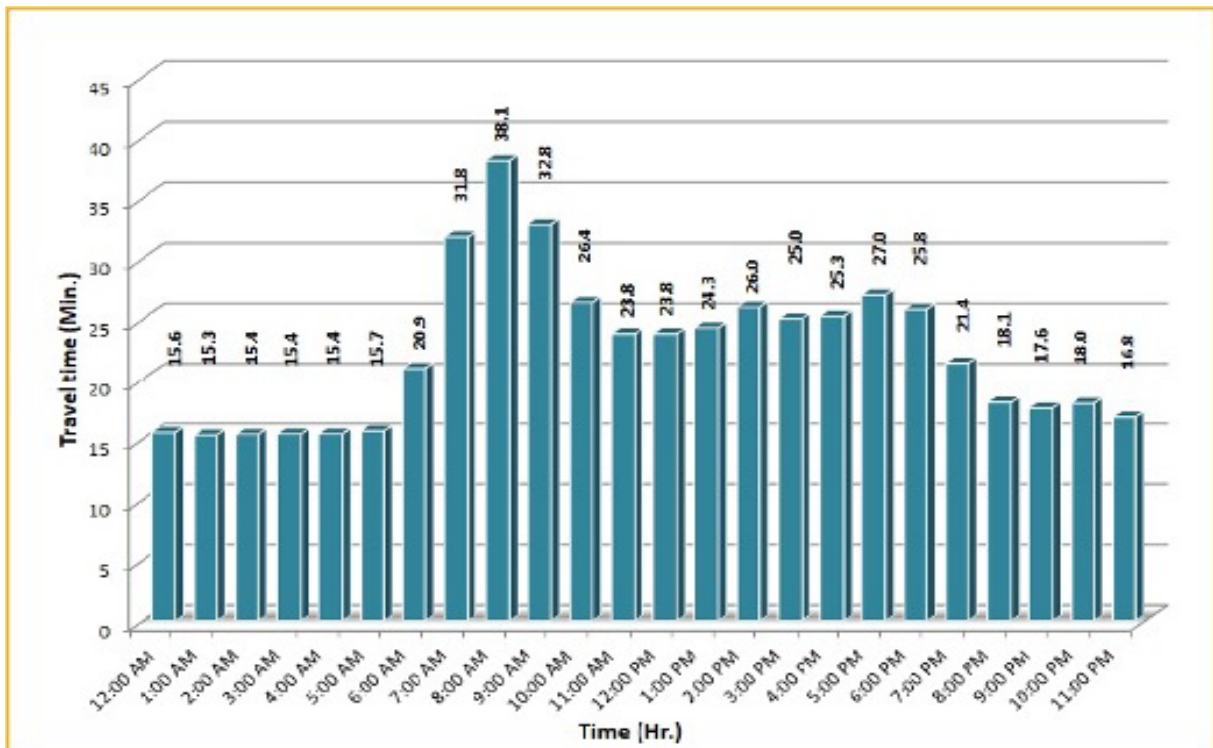
## TRAVEL TIME RELIABILITY REPORT

### Weekdays Travel Times by Time of Day\*

**I-95 Northbound: 17.3 Miles\*\***  
From: US-1  
To: Miami-Dade / Broward County Line



**I-95 Southbound: 17.3 Miles\*\***  
From: Miami-Dade / Broward County Line  
To: US-1



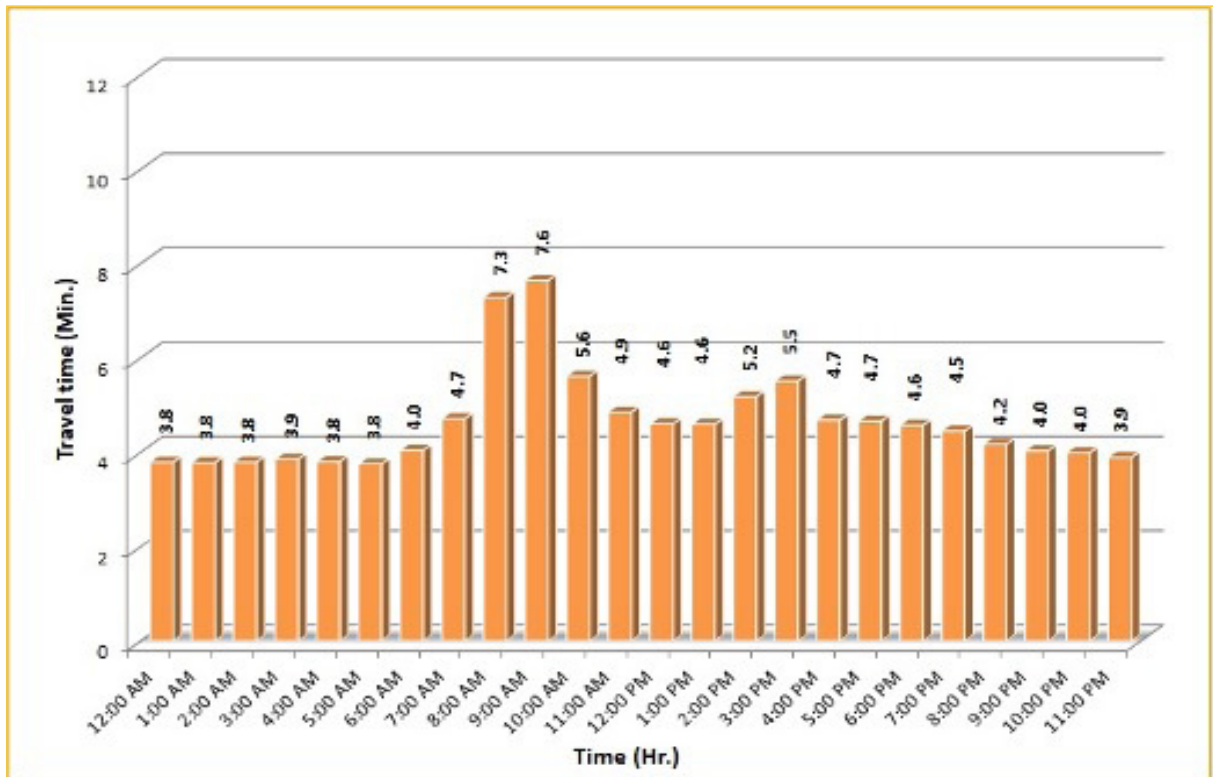
\* Twelve-month weekday average from October 1st, 2021 to September 30th, 2022.

\*\* Data obtained from Regional Integrated Transportation System (RITIS), Probe Data Analytics Suite. Excludes express lanes.

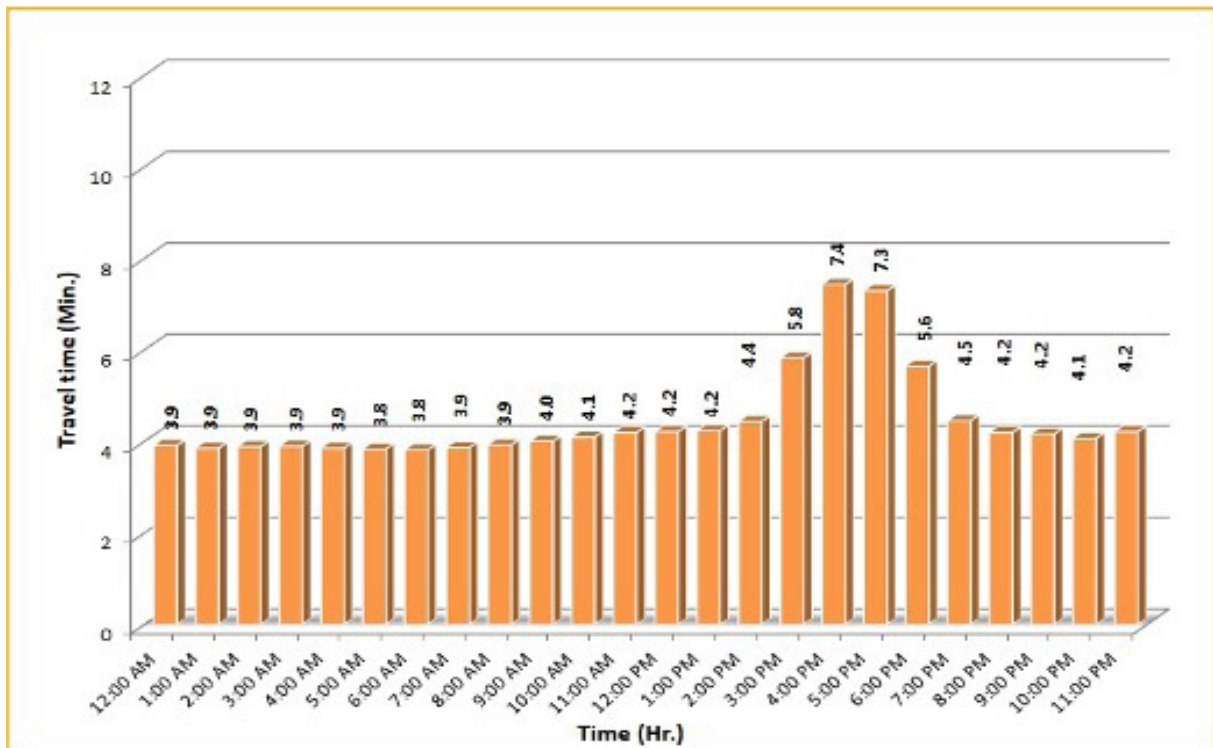
## TRAVEL TIME RELIABILITY REPORT

### Weekdays Travel Times by Time of Day\*

**I-195 Eastbound: 4.9 Miles\*\***  
From: West of North Miami Avenue  
To: West of Alton Road



**I-195 Westbound: 4.9 Miles\*\***  
From: West of Alton Road  
To: West of North Miami Avenue



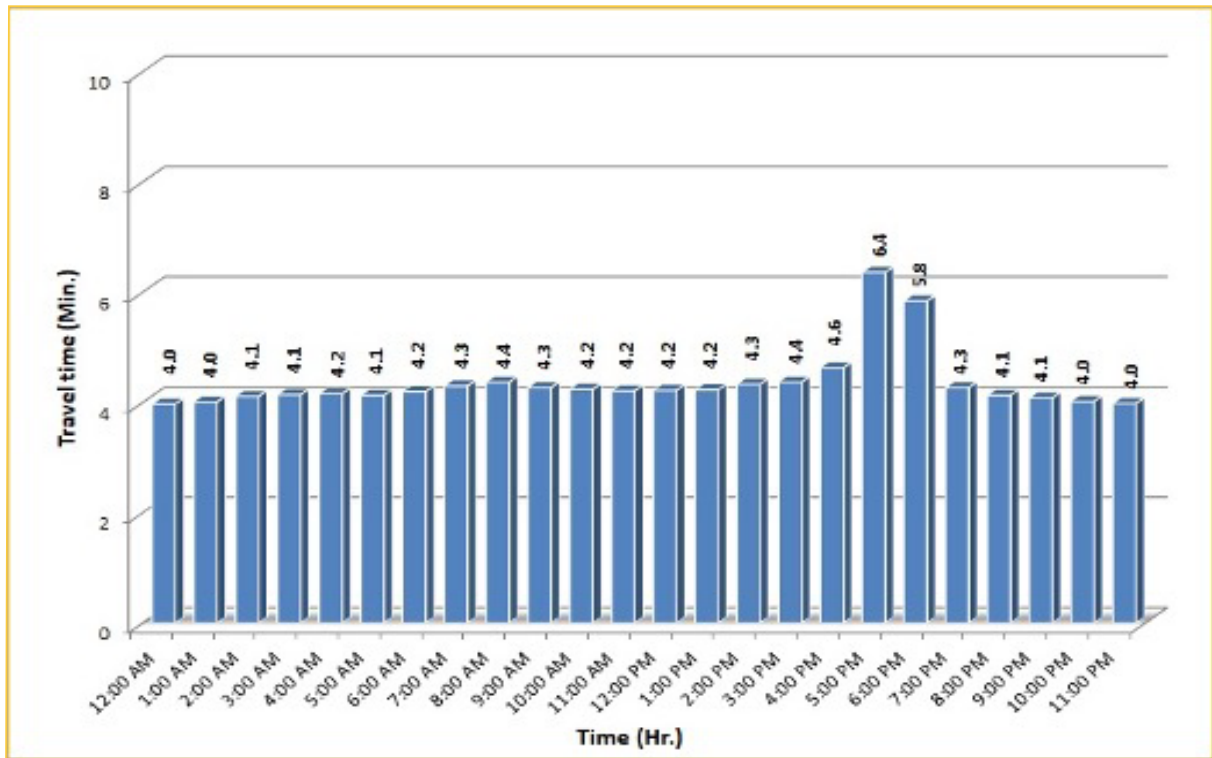
\* Twelve-month weekday average from October 1st, 2021 to September 30th, 2022.

\*\* Data obtained from Regional Integrated Transportation System (RITIS), Probe Data Analytics Suite. Excludes express lanes.

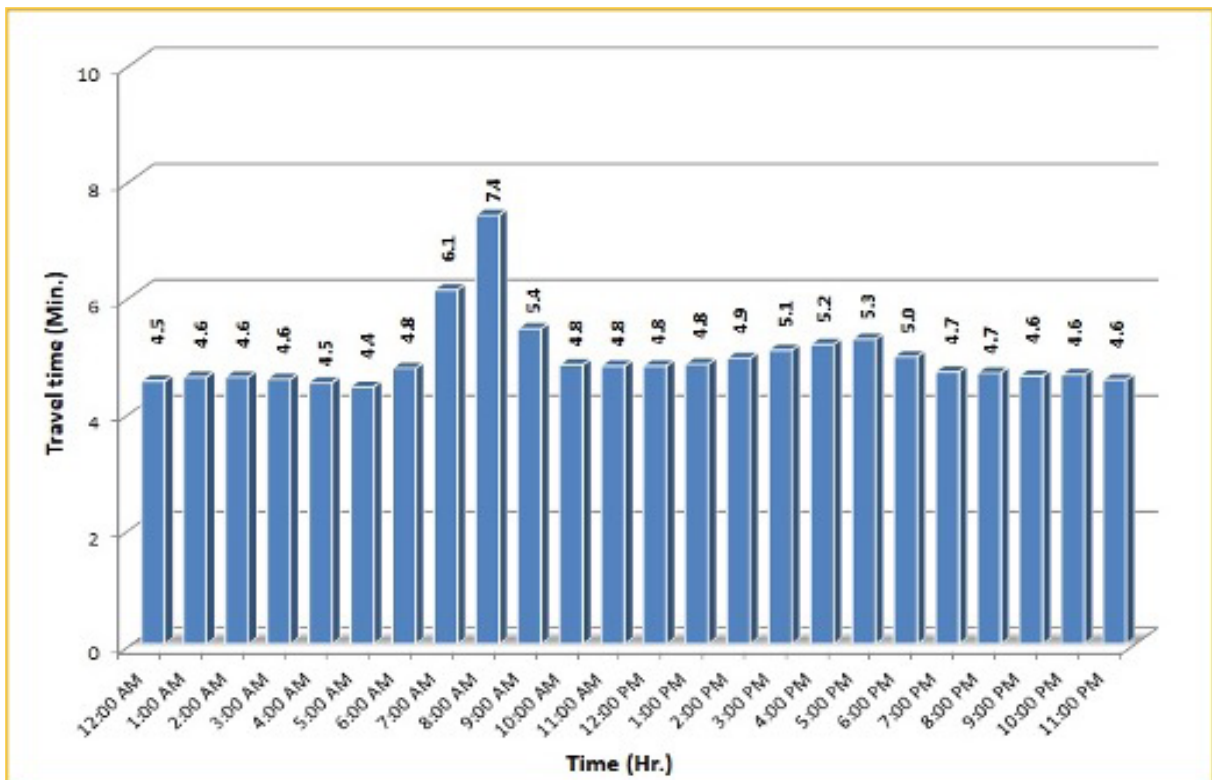
## TRAVEL TIME RELIABILITY REPORT

### Weekdays Travel Times by Time of Day\*

**I-75 Northbound: 5.4 Miles\*\***  
From: West of SR 826  
To: North of Florida's Turnpike



**I-75 Southbound: 5.4 Miles\*\***  
From: North of Florida's Turnpike  
To: West of SR 826



\* Twelve-month weekday average from October 1st, 2021 to September 30th, 2022.

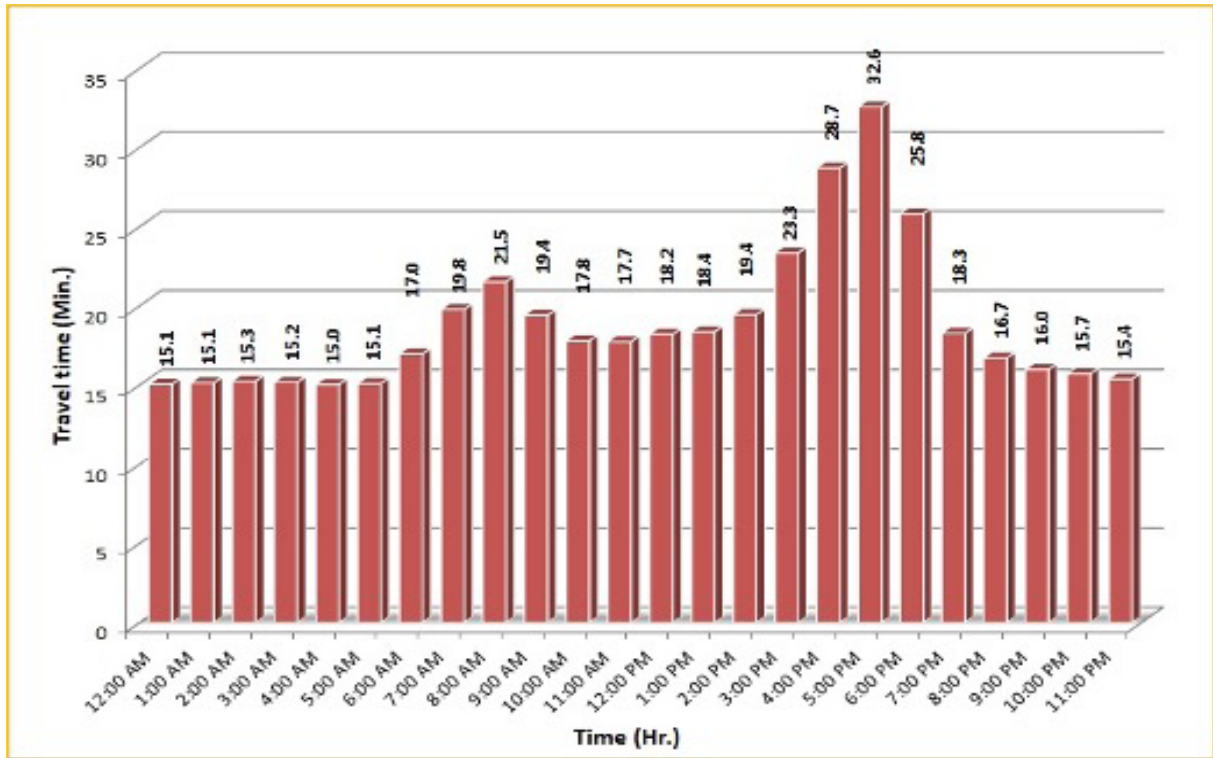
\*\* Data obtained from Regional Integrated Transportation System (RITIS), Probe Data Analytics Suite. Excludes express lanes.




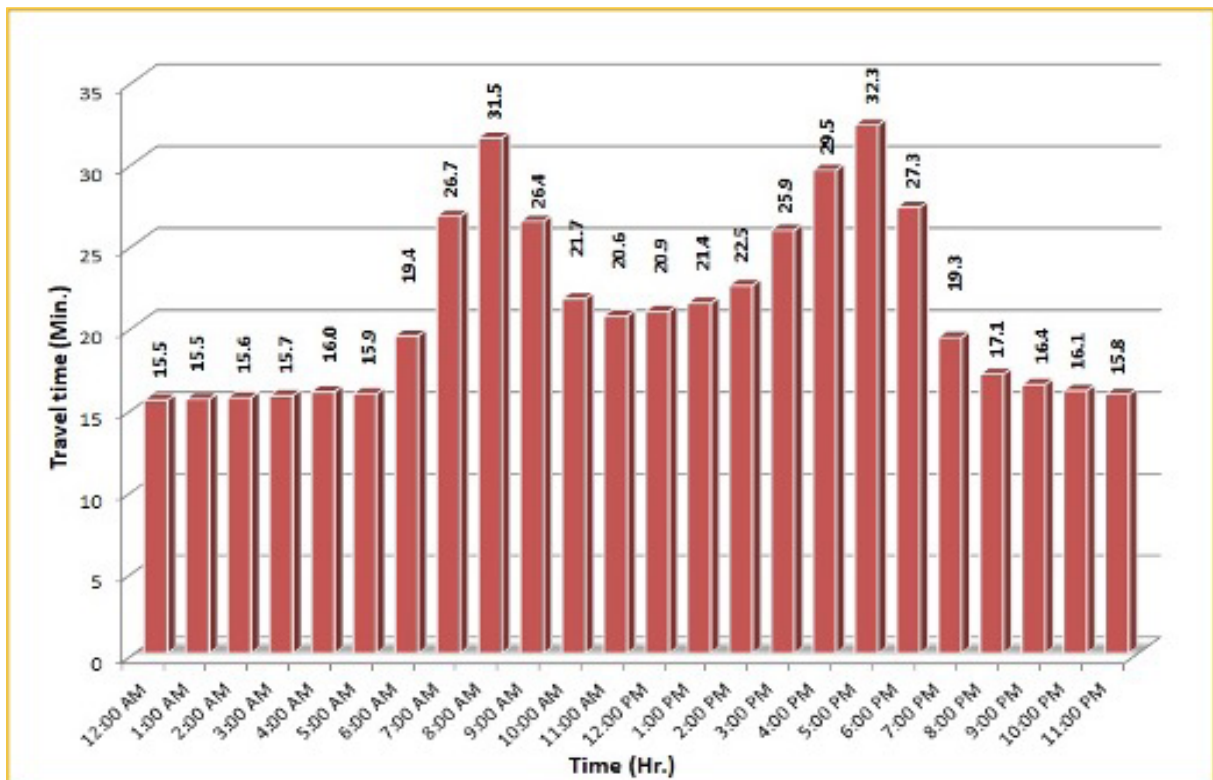
## TRAVEL TIME RELIABILITY REPORT

### Weekdays Travel Times by Time of Day\*

**SR 826 Northbound: 16.6 Miles\*\***  
From: US-1  
To: North of NW 154 Street

**SR 826 Southbound: 16.6 Miles\*\***  
From: North of NW 154 Street  
To: US-1

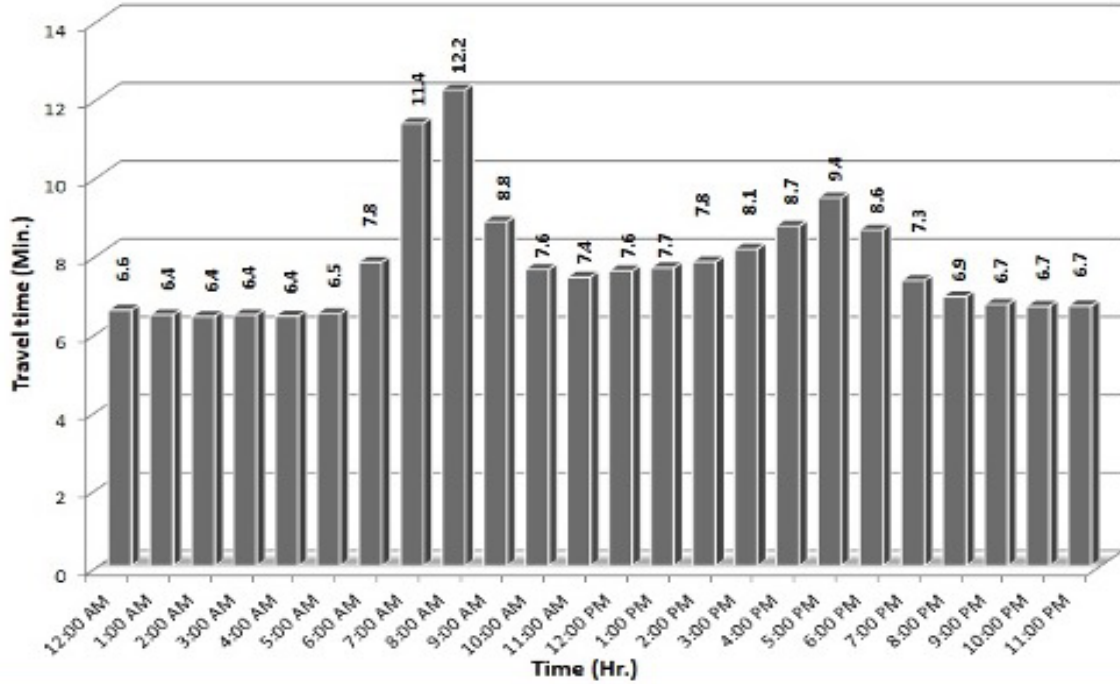
\* Twelve-month weekday average from October 1st, 2021 to September 30th, 2022.

\*\* Data obtained from Regional Integrated Transportation System (RITIS), Probe Data Analytics Suite. Excludes express lanes.

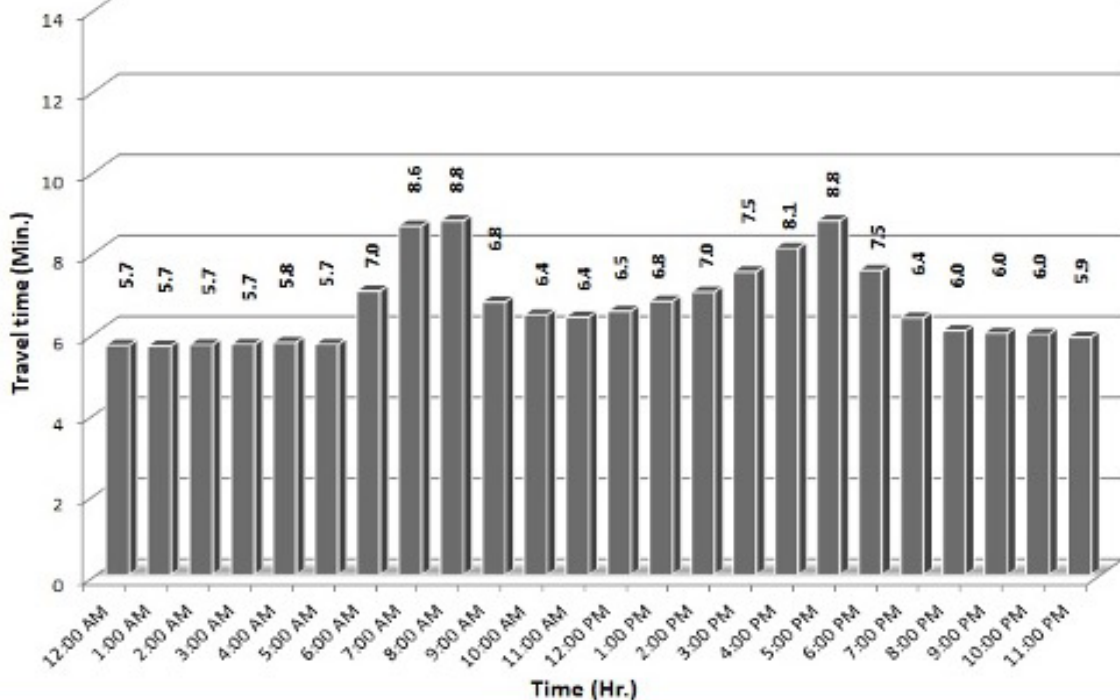
## TRAVEL TIME RELIABILITY REPORT

### Weekdays Travel Times by Time of Day\*

SR 826 Eastbound: 7.1 Miles\*\*  
From: West of NW 67 Avenue  
To: I-95

SR 826 Westbound: 7.1 Miles\*\*  
From: I-95  
To: West of NW 67 Avenue

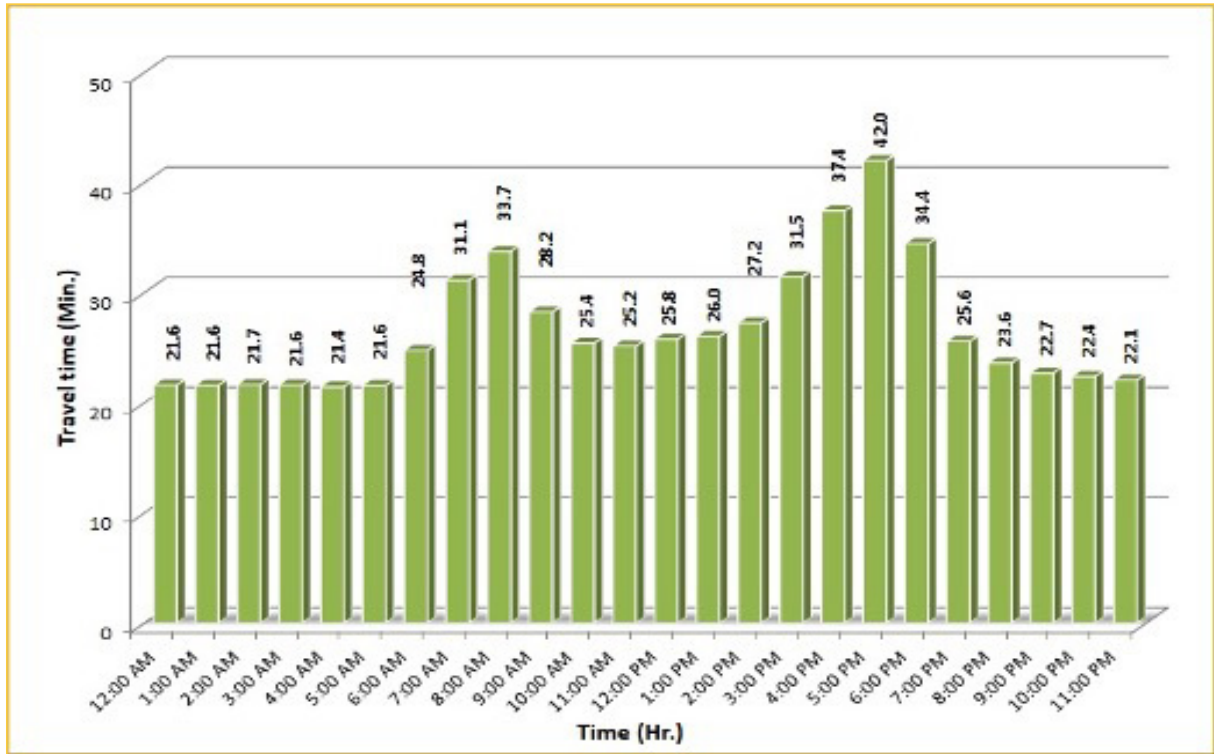
\* Twelve-month weekday average from October 1st, 2021 to September 30th, 2022.

\*\* Data obtained from Regional Integrated Transportation System (RITIS), Probe Data Analytics Suite. Excludes express lanes.

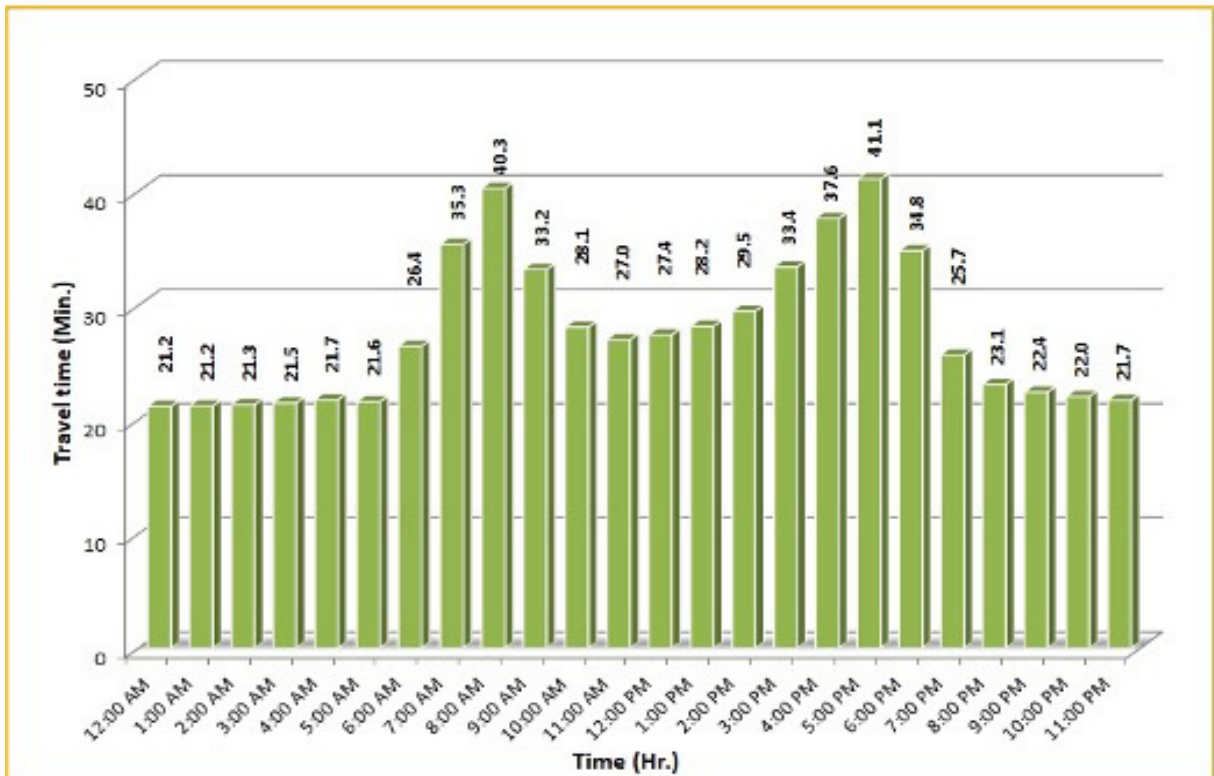
## TRAVEL TIME RELIABILITY REPORT

### Weekdays Travel Times by Time of Day\*

SR 826 Northbound/Eastbound : 24.2 Miles\*\*  
From: US-1  
To: I-95



SR 826 Southbound/Westbound: 24.2 Miles\*\*  
From: I-95  
To: US-1



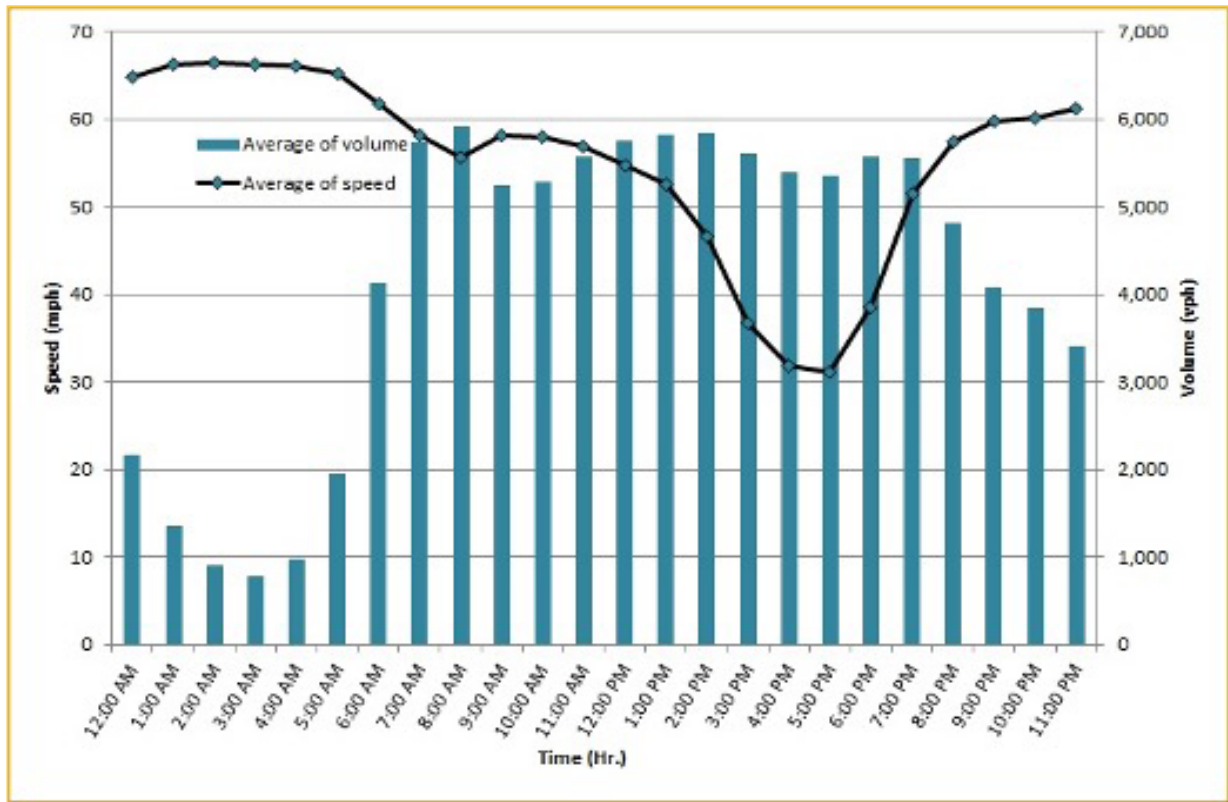
\* Twelve-month weekday average from October 1st, 2021 to September 30th, 2022.

\*\* Data obtained from Regional Integrated Transportation System (RITIS), Probe Data Analytics Suite. Excludes express lanes.

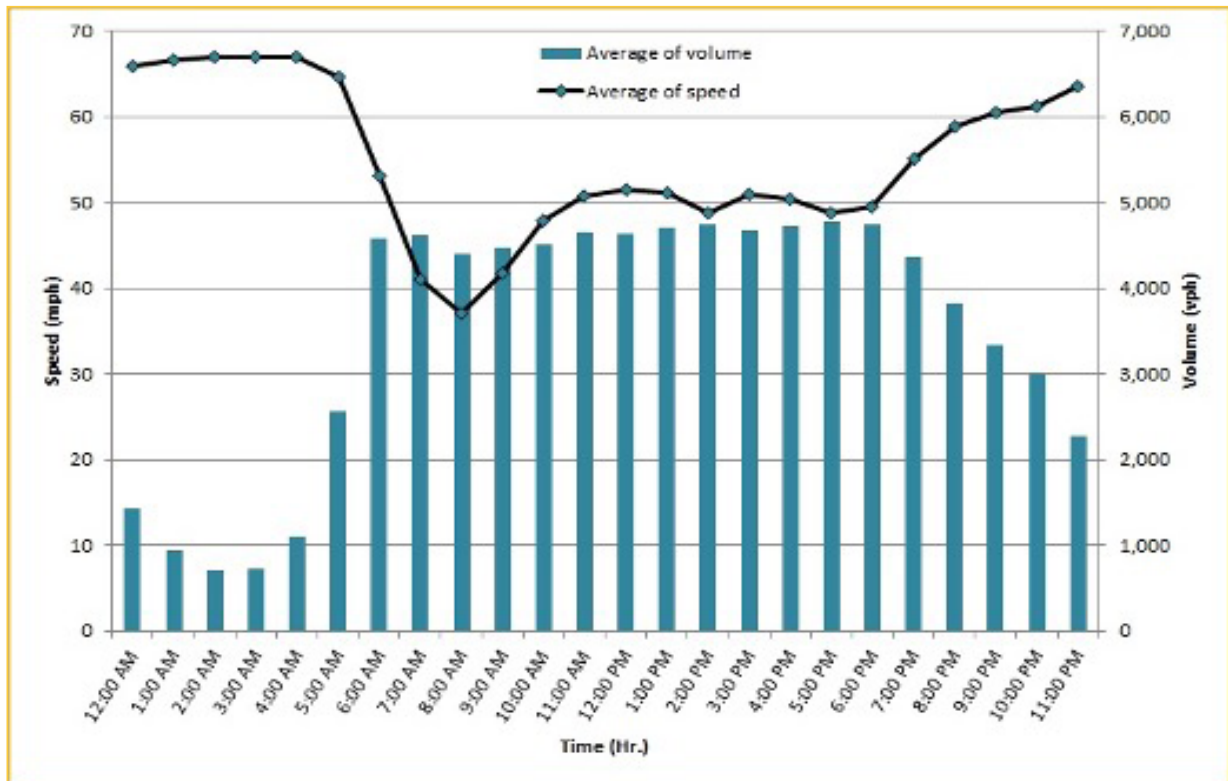
## TRAVEL TIME RELIABILITY REPORT

### Weekdays Speeds and Volumes by Time of Day\*

**I-95 Northbound: 17.3 Miles\*\***  
From: US-1  
To: Miami-Dade / Broward County Line



**I-95 Southbound: 17.3 Miles\*\***  
From: Miami-Dade / Broward County Line  
To: US-1



\* Twelve-month weekday average from October 1st, 2021 to September 30th, 2022.

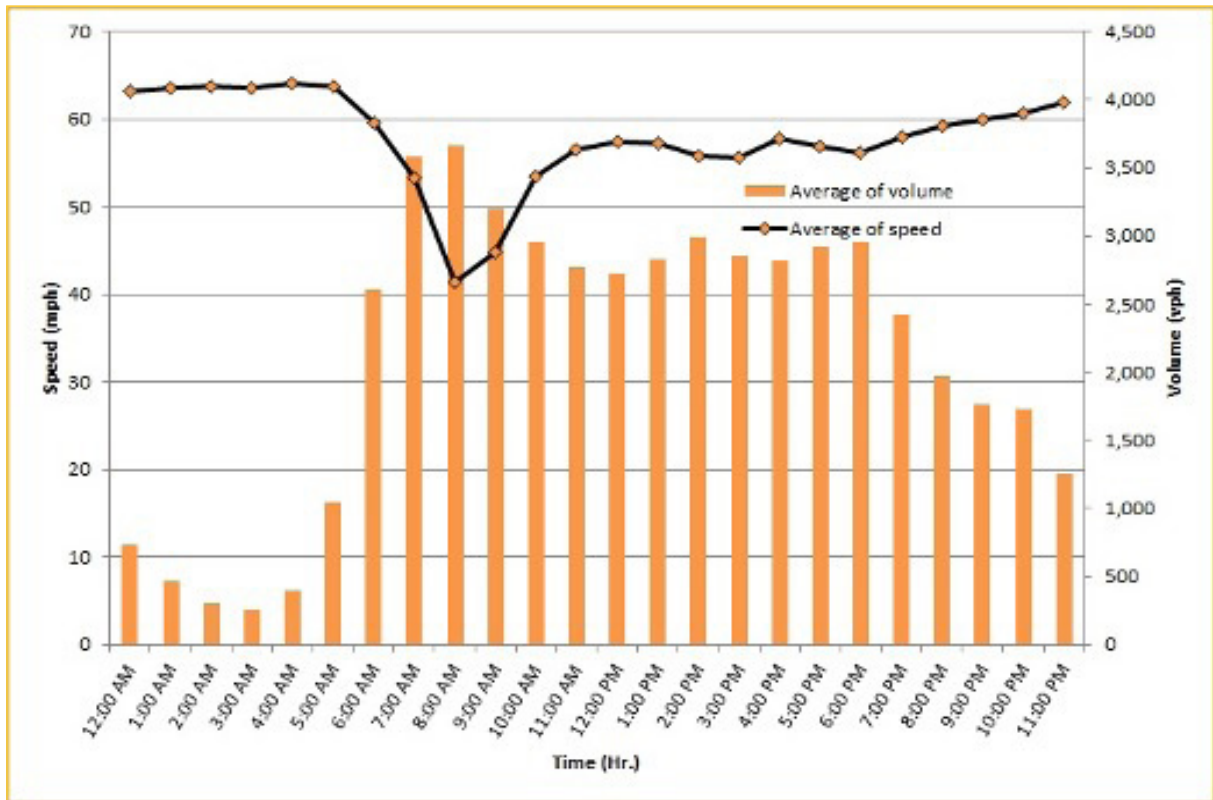
\*\* Data obtained from Regional Integrated Transportation System (RITIS), Probe Data Analytics Suite. Excludes express lanes.



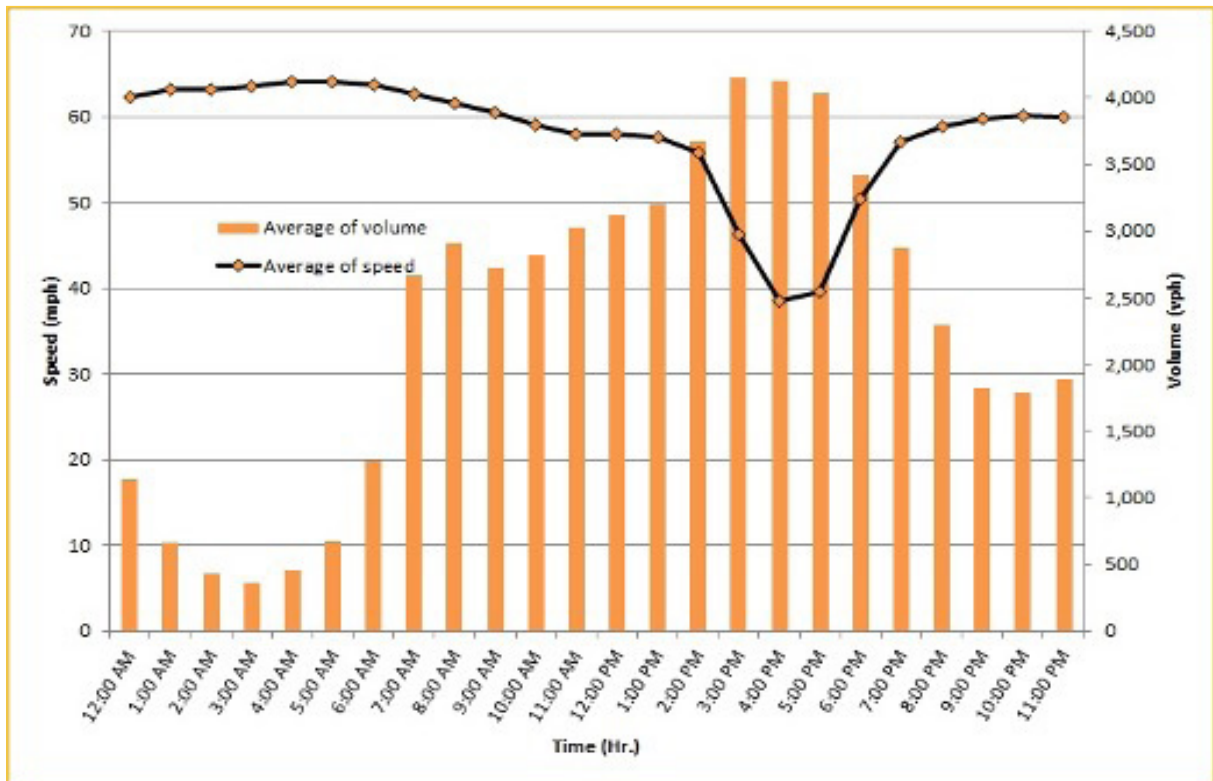
## TRAVEL TIME RELIABILITY REPORT

### Weekdays Speeds and Volumes by Time of Day\*

**I-195 Eastbound: 4.9 Miles\*\***  
From: West of North Miami Avenue  
To: West of Alton Road



**I-195 Westbound: 4.9 Miles\*\***  
From: West of Alton Road  
To: West of North Miami Avenue



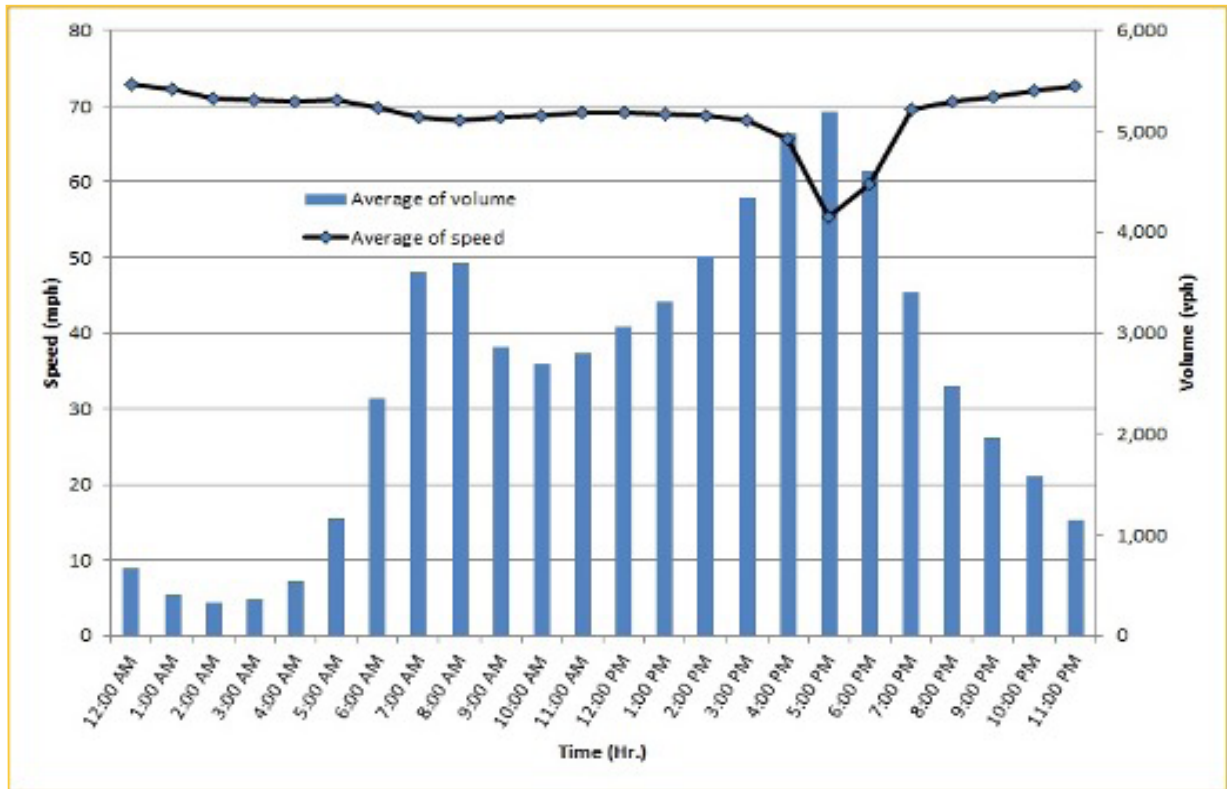
\* Twelve-month weekday average from October 1st, 2021 to September 30th, 2022.

\*\* Data obtained from Regional Integrated Transportation System (RITIS), Probe Data Analytics Suite. Excludes express lanes.

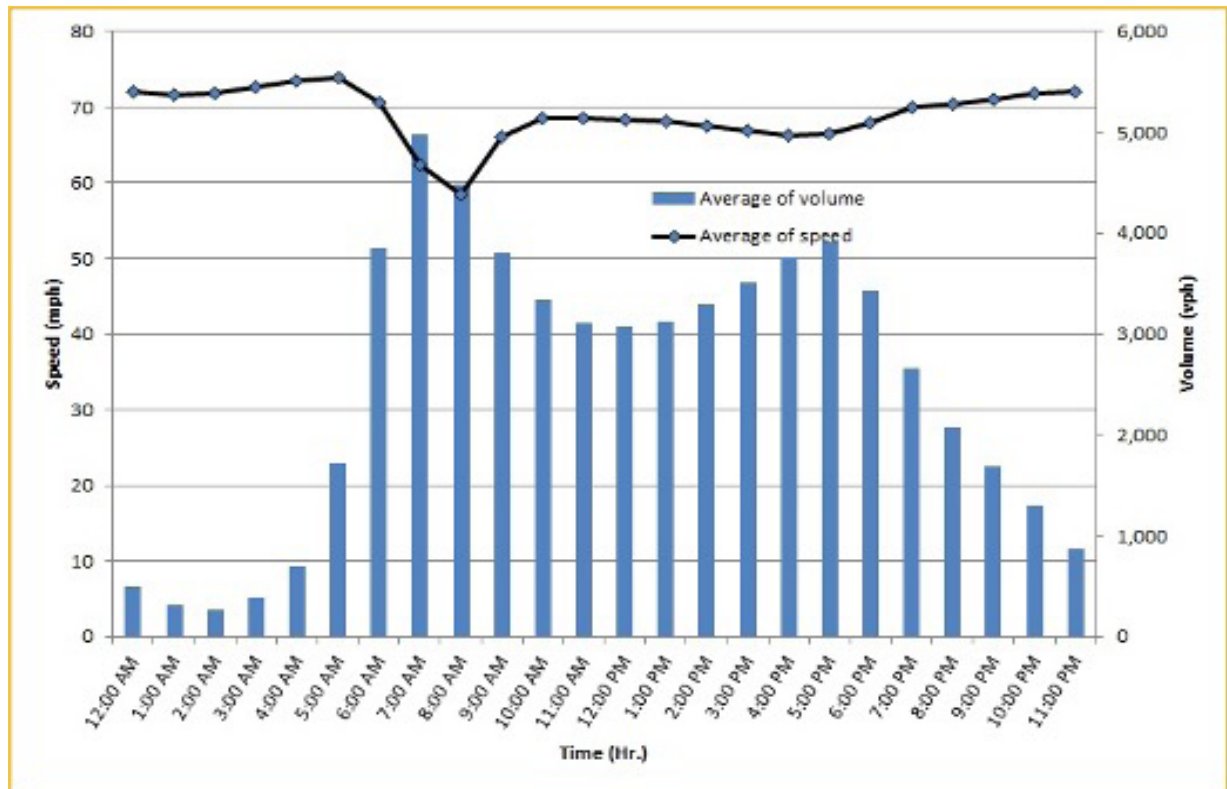
## TRAVEL TIME RELIABILITY REPORT

### Weekdays Speeds and Volumes by Time of Day\*

**I-75 Northbound: 5.4 Miles \*\***  
From: West of SR 826  
To: North of Florida's Turnpike



**I-75 Southbound: 5.4 Miles \*\***  
From: North of Florida's Turnpike  
To: West of SR 826



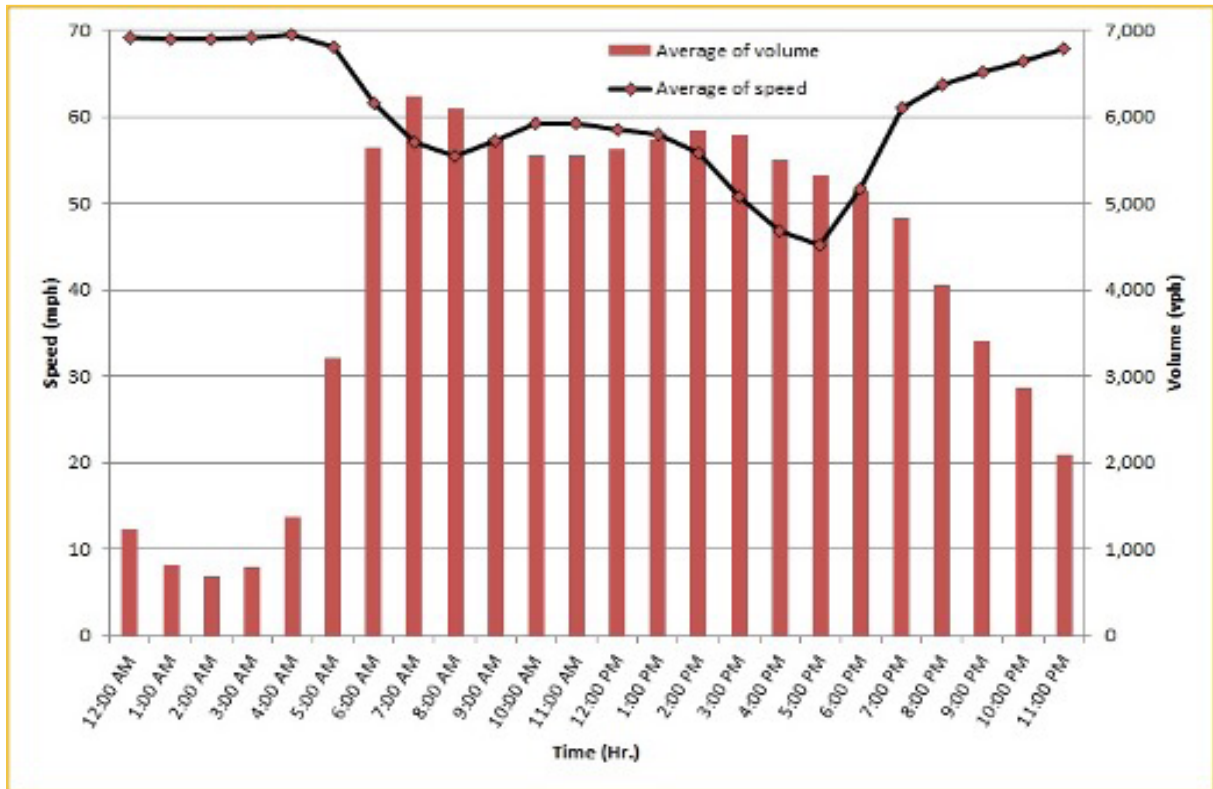
\* Twelve-month weekday average from October 1st, 2021 to September 30th, 2022.

\*\* Data obtained from Regional Integrated Transportation System (RITIS), Probe Data Analytics Suite. Excludes express lanes.

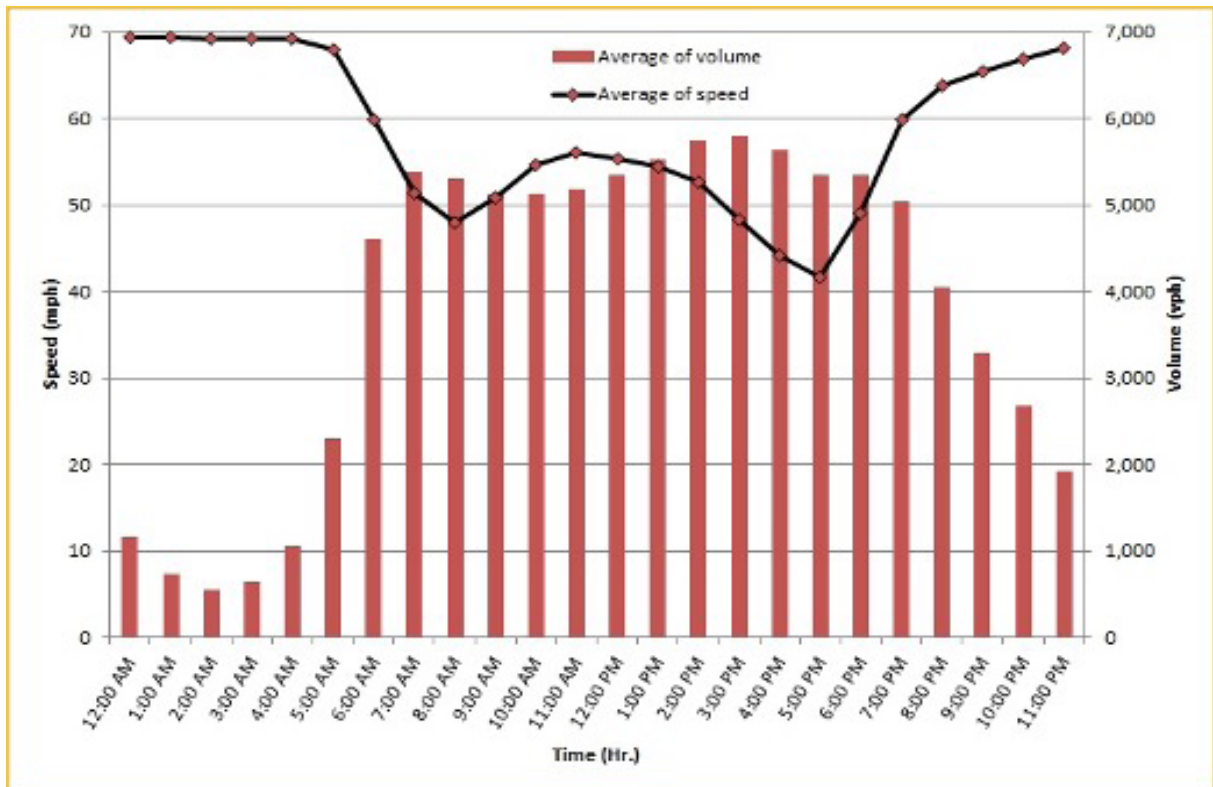
## TRAVEL TIME RELIABILITY REPORT

### Weekdays Speeds and Volumes by Time of Day\*

SR 826 Northbound: 16.6 Miles\*\*  
From: US-1  
To: North of NW 154 Street

SR 826 Southbound: 16.6 Miles\*\*  
From: North of NW 154 Street  
To: US-1

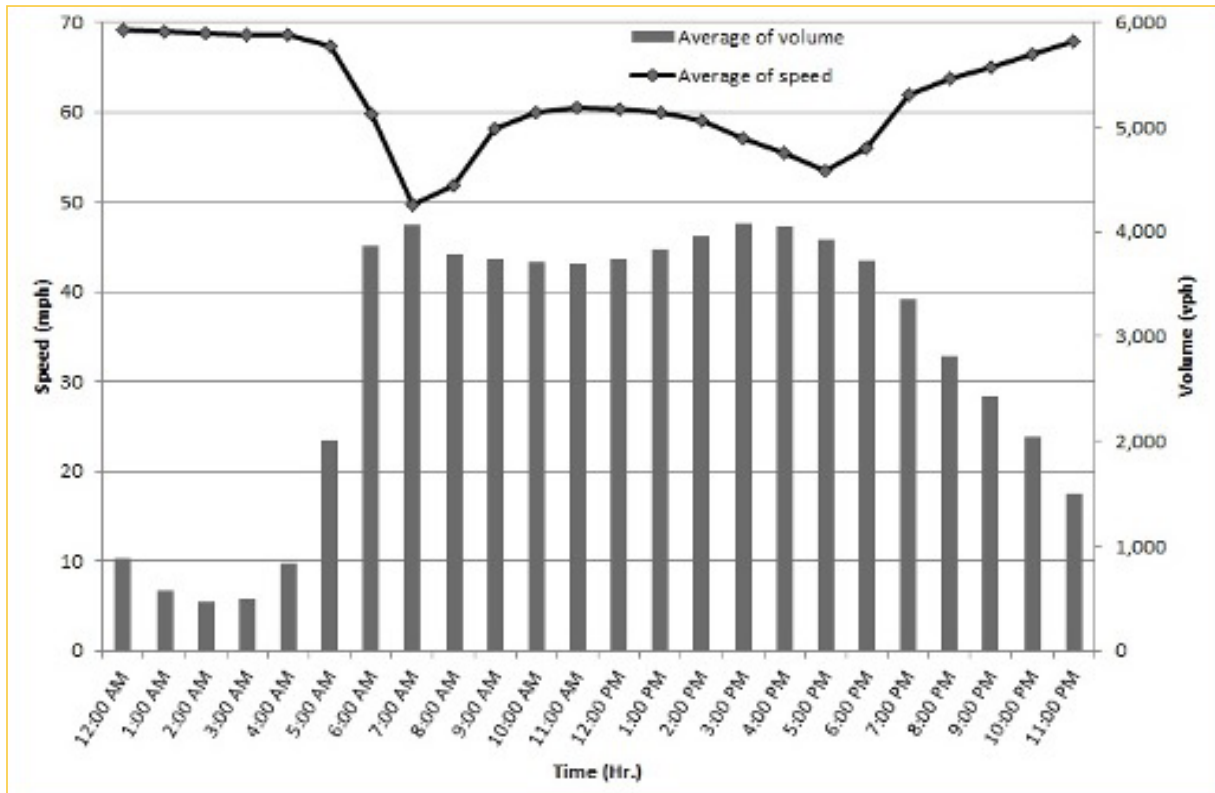
\* Twelve-month weekday average from October 1st, 2021 to September 30th, 2022.

\*\* Data obtained from Regional Integrated Transportation System (RITIS), Probe Data Analytics Suite. Excludes express lanes.

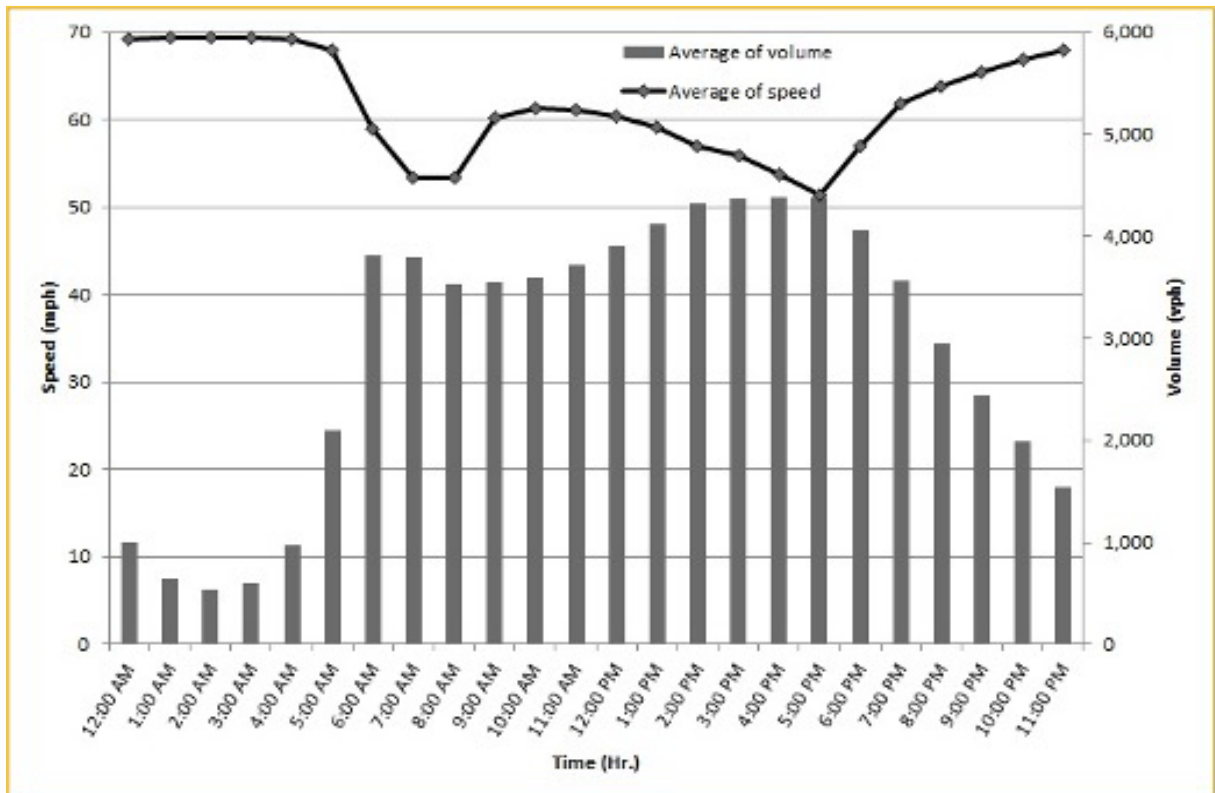
## TRAVEL TIME RELIABILITY REPORT

### Weekdays Speeds and Volumes by Time of Day\*

SR 826 Eastbound: 7.1 Miles\*\*  
From: West of NW 67 Avenue  
To: I-95

SR 826 Westbound: 7.1 Miles \*\*  
From: I-95  
To: West of NW 67 Avenue

\* Twelve-month weekday average from October 1st, 2021 to September 30th, 2022.

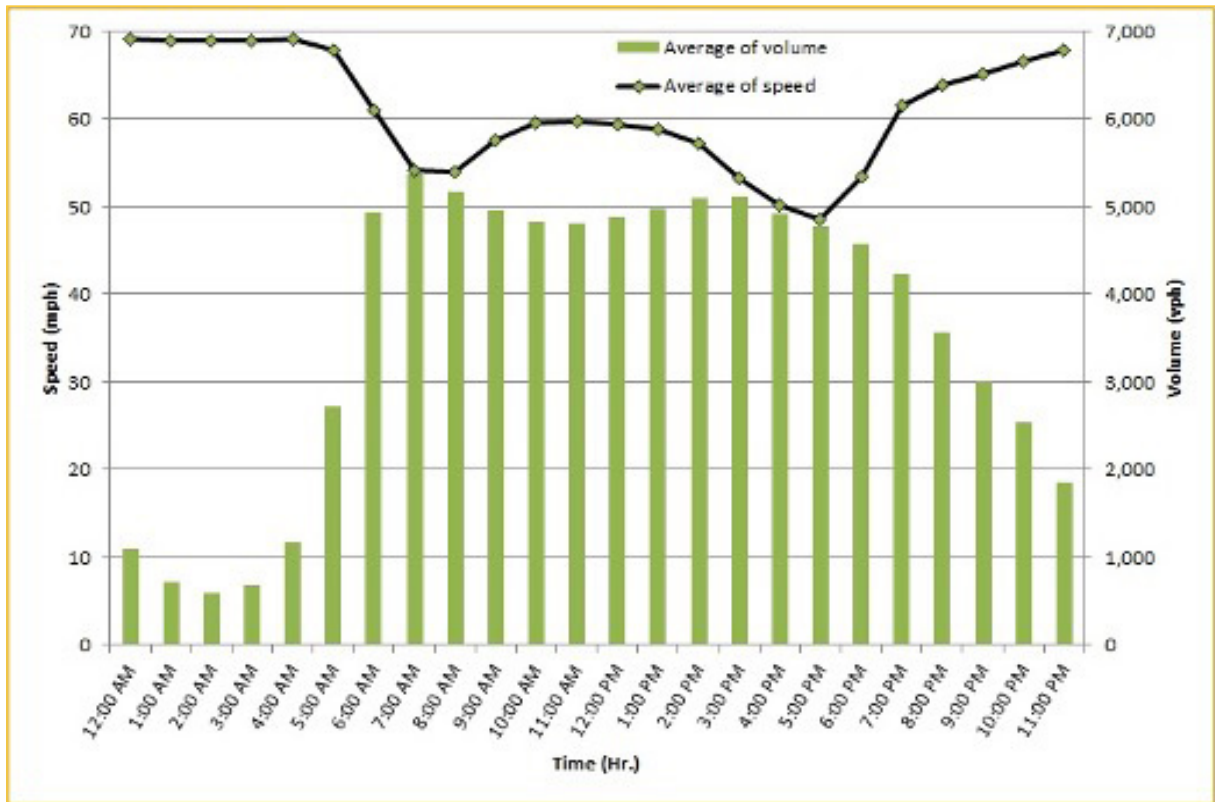
\*\* Data obtained from Regional Integrated Transportation System (RITIS), Probe Data Analytics Suite. Excludes express lanes.



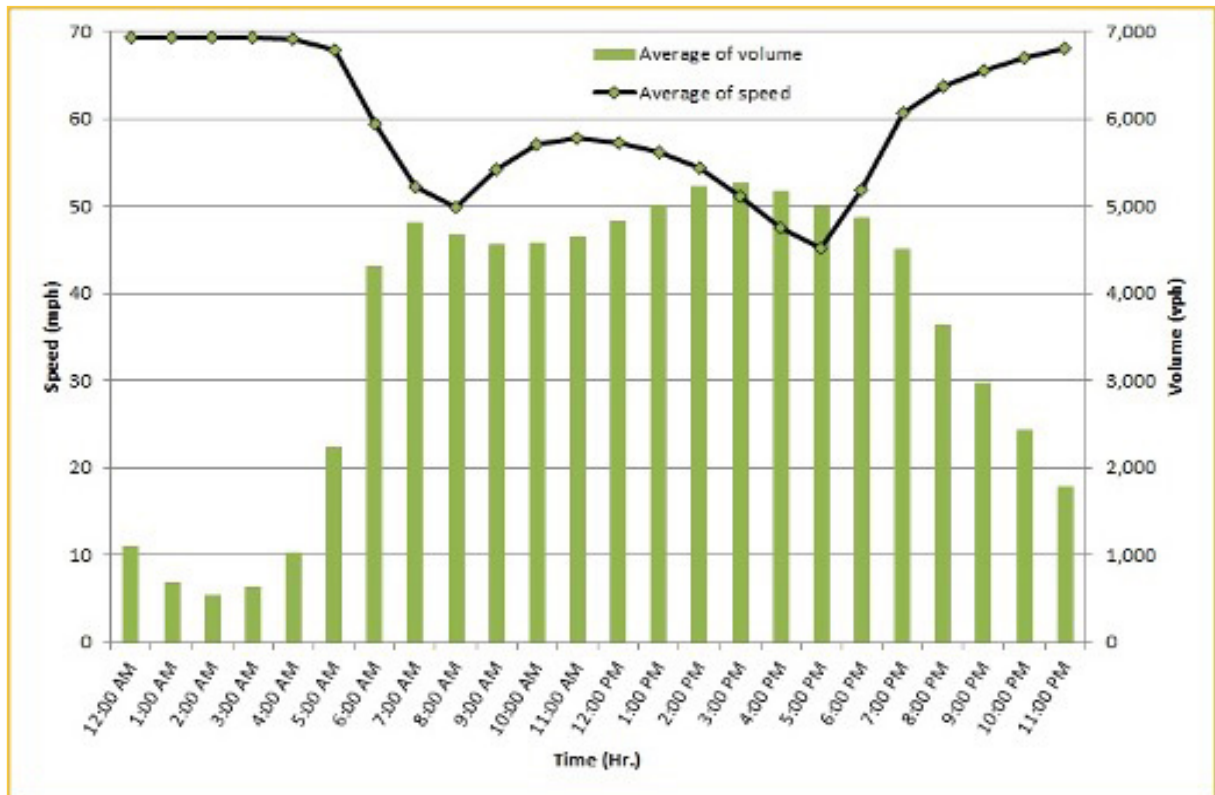
## TRAVEL TIME RELIABILITY REPORT

### Weekdays Speeds and Volumes by Time of Day\*

SR 826 Northbound/Eastbound : 24.2 Miles\*\*  
From: US-1  
To: I-95



SR 826 Southbound/Westbound: 24.2 Miles\*\*  
From: I-95  
To: US-1



\* Twelve-month weekday average from October 1st, 2021 to September 30th, 2022.

\*\* Data obtained from Regional Integrated Transportation System (RITIS), Probe Data Analytics Suite. Excludes express lanes.