



Welcome to the Miami-Dade TIM Team 95 Corridor Meeting

February 16, 2022

Agenda

Item	Description	Duration
1.	Purpose of Meeting	5 Minutes
	This meeting will serve as a discussion platform for agencies directly impacted by Florida Department of Transportation District Six's roadways in Miami-Dade County along the eastern region, which are I-95, 95 Express, I-195/Julia Tuttle Causeway, I-395, and the MacArthur Causeway. This provides local fire rescue, law enforcement, asset maintenance, Florida Highway Patrol, and other agencies the opportunity to coordinate and share information regarding special events, construction projects, activities, initiatives, and issues specific to the area.	
2.	SunGuide TMC Updates	20 Minutes
	<ul style="list-style-type: none"> ▪ Special Events ▪ New Incident Management Area ▪ TMC Updates ▪ Rapid Incident Scene Clearance Program 	
3.	Construction Update	10 Minutes
	I-395/SR 836/I-95 Design-Build Project	
4.	Emergency Spill Presentation	30 Minutes
	Emergency Spill Assessment, Response, and Reporting	
5.	Open Discussion	30 Minutes
6.	Adjournment	

January 17, 2022

- “Wheels Up, Guns Down”
- Bicycles on I-195 and I-95
- Enhanced Law Enforcement
- TMC Coordination



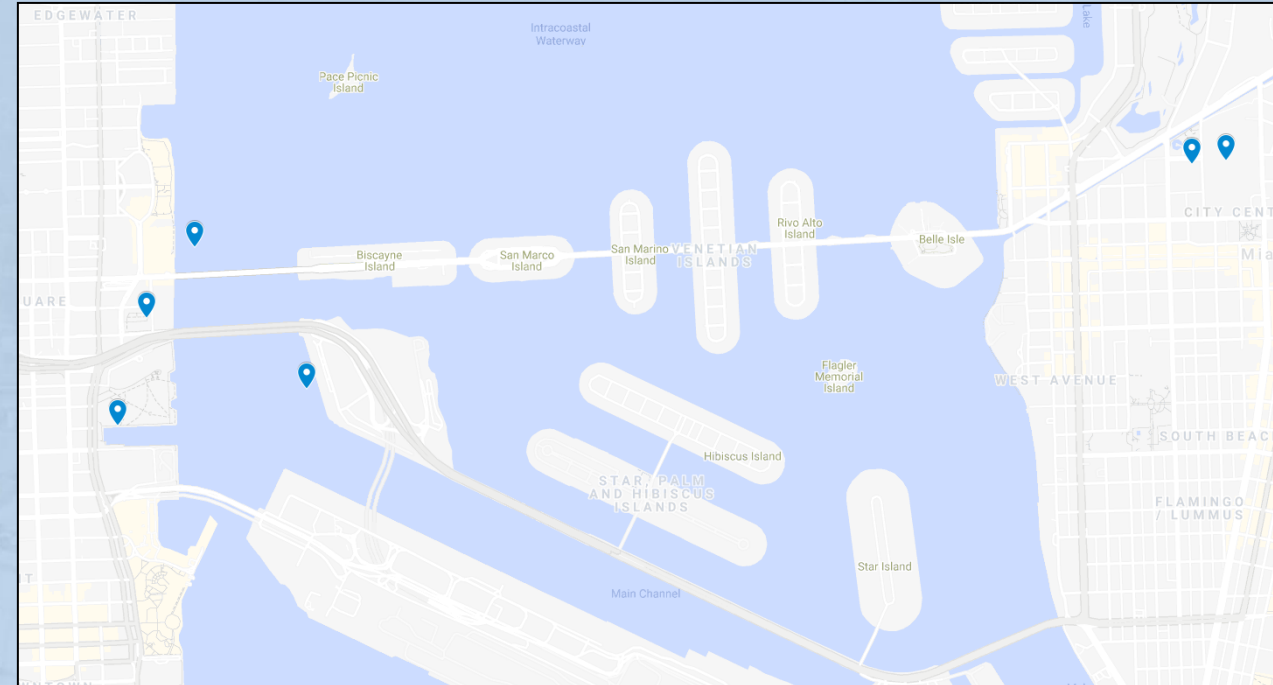
January 17, 2022

- 3:50PM – Entered I-195 WB, Ramp from North Miami Avenue
- Exited on I-95 NB, Ramp to NW 62 Street
- Approximately 2 Miles for Brief Time
- 5:45PM – FHP Blocked Reentry of I-95 SB, Ramp from NW 62 Street



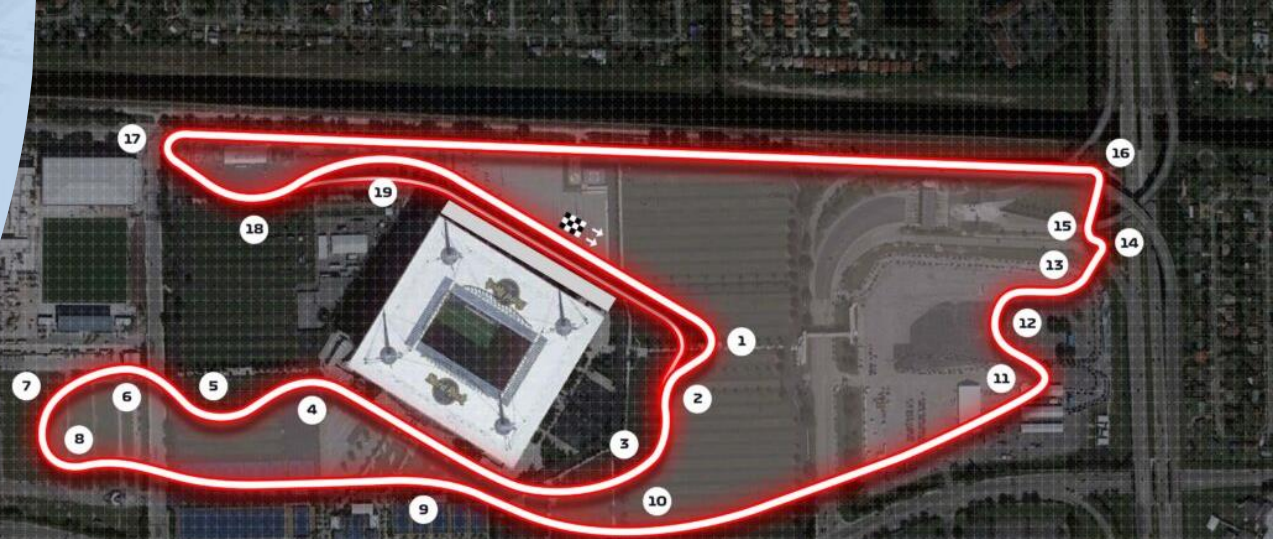
Miami International Boat Show

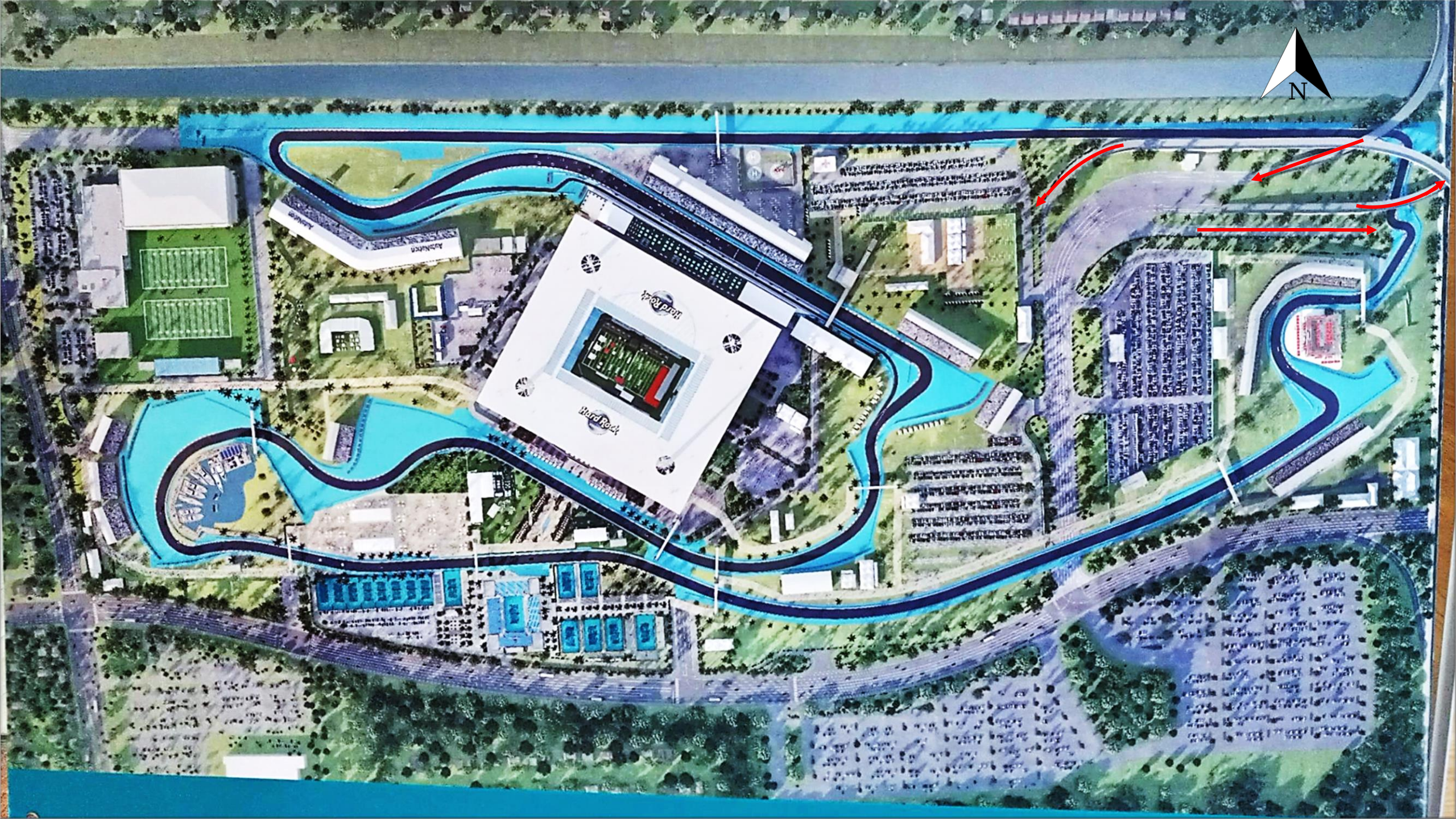
- February 16 - 20, 2022
- Shows at Multiple Locations
 - Miami Beach Convention Center
 - Pride Park
 - One Herald Plaza
 - Sea Isle Marina
 - Island Gardens
- Miami Yacht Show Together with the Discover Boating Miami International Boat Show



Miami Grand Prix

- May 6 - 8, 2022
- Sold Out Event
- Florida's Turnpike Ramps of NW 199 ST Closed
- TMC Providing Support









Miami Open

- March 21 - April 3, 2022
- Coordination of Closures at the Golden Glades Interchange
- Daily Closures



Dolphins Cancer Challenge

(February 26, 2022)

Jazz in the Gardens Music Fest

(March 12 - March 13, 2022)

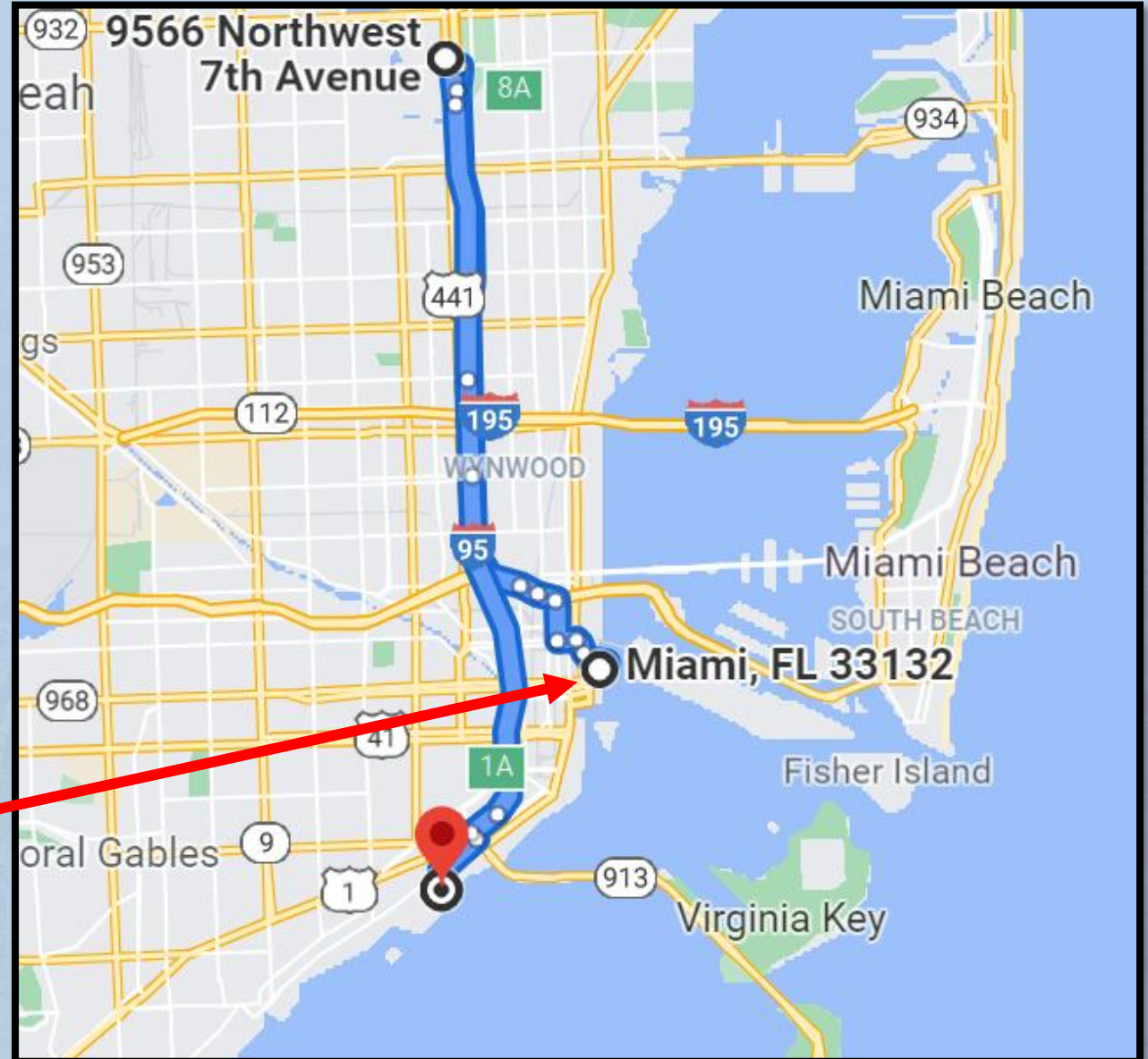
Rolling Loud Tour

(July 22 - July 24, 2022)



Ultra Music Festival

- March 25 - March 27, 2022
- Bayfront Park
- Additional Traffic Impact
 - I-95, I-395, and MacArthur Causeway



Miami Beach Live

- Weekends of March 2022
- Concert Series and Events
- Food, Art, Outdoor Movies, Wellness and Sport Activities

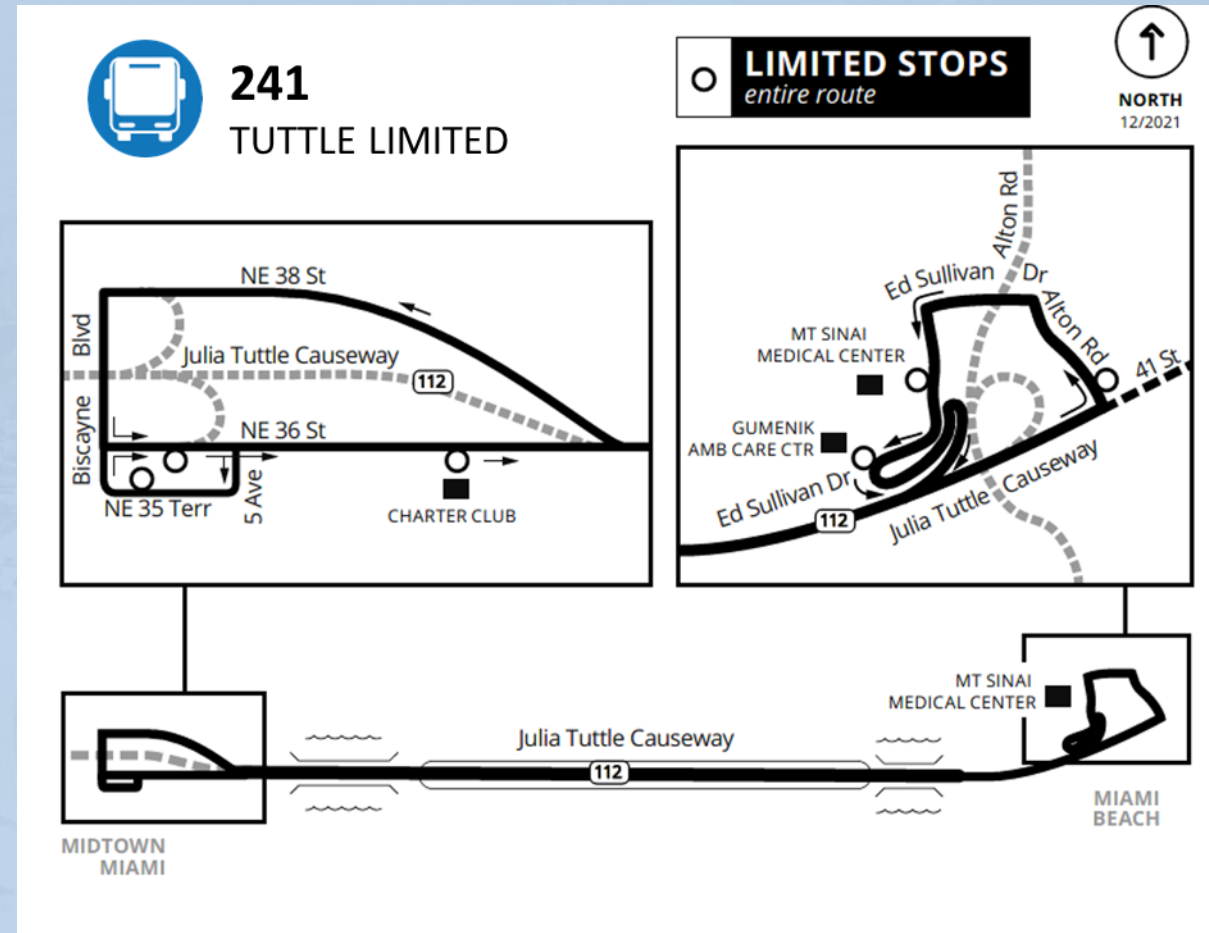


MIAMI BEACH LIVE

Four weekends for your five senses

Route 241 / Tuttle Limited

- Began December 20, 2021
- Biscayne Boulevard and NE 36 Street to Mount Sinai Medical Center
- Shoulder Use When Congested (35 MPH)
- 15 Minute Headways with Service from 5:00AM to 10:00PM



- Bus Service Relocated to the West Lot
- Direct Access to Tri-Rail Station
- New Incident Management Area (IMA)
- Retail Space Coming Soon



I-395 /SR 836/I-95 Design-Build Project

- Nighttime Closures
- Dynamic Messaging Support
- Road Ranger Coordination
- Incident Management Staging Area
- Update by Senior Community Outreach Specialist



Wrong Way Driving Detection



Wrong Way Driving Detection

Wrong Way Detection Projects

- SR 826 Southbound Exit Ramps
 - SW 56 Street
 - SW 40 Street
- I-95 Exit Ramps
 - NW 95 Street
- 3 FDOT Projects Coming Soon
 - Several Years
 - 81 Ramps



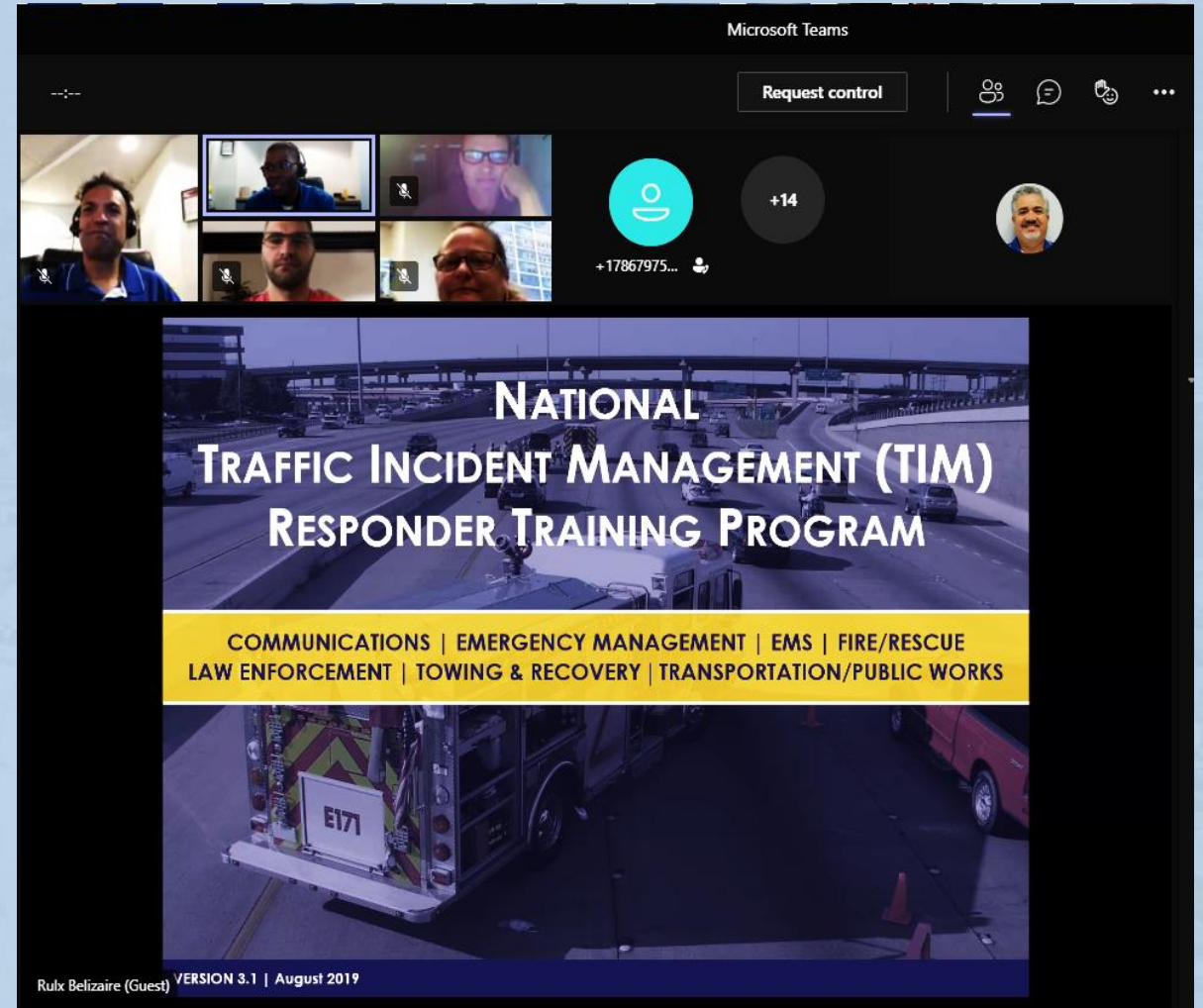
**WRONG WAY
DRIVER REPORTED
USE CAUTION**

Details

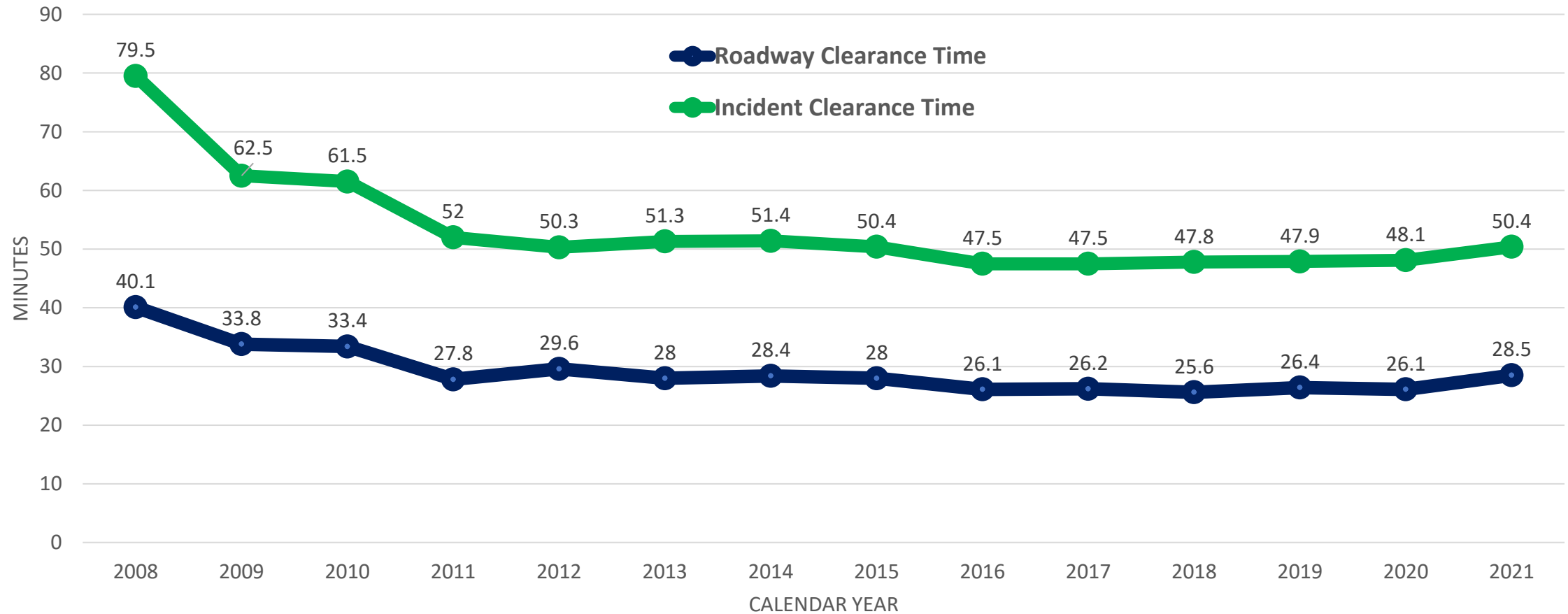
- Online Live Trainings
- Register on SunGuide.info
- Additional Certified Trainers

Upcoming Trainings

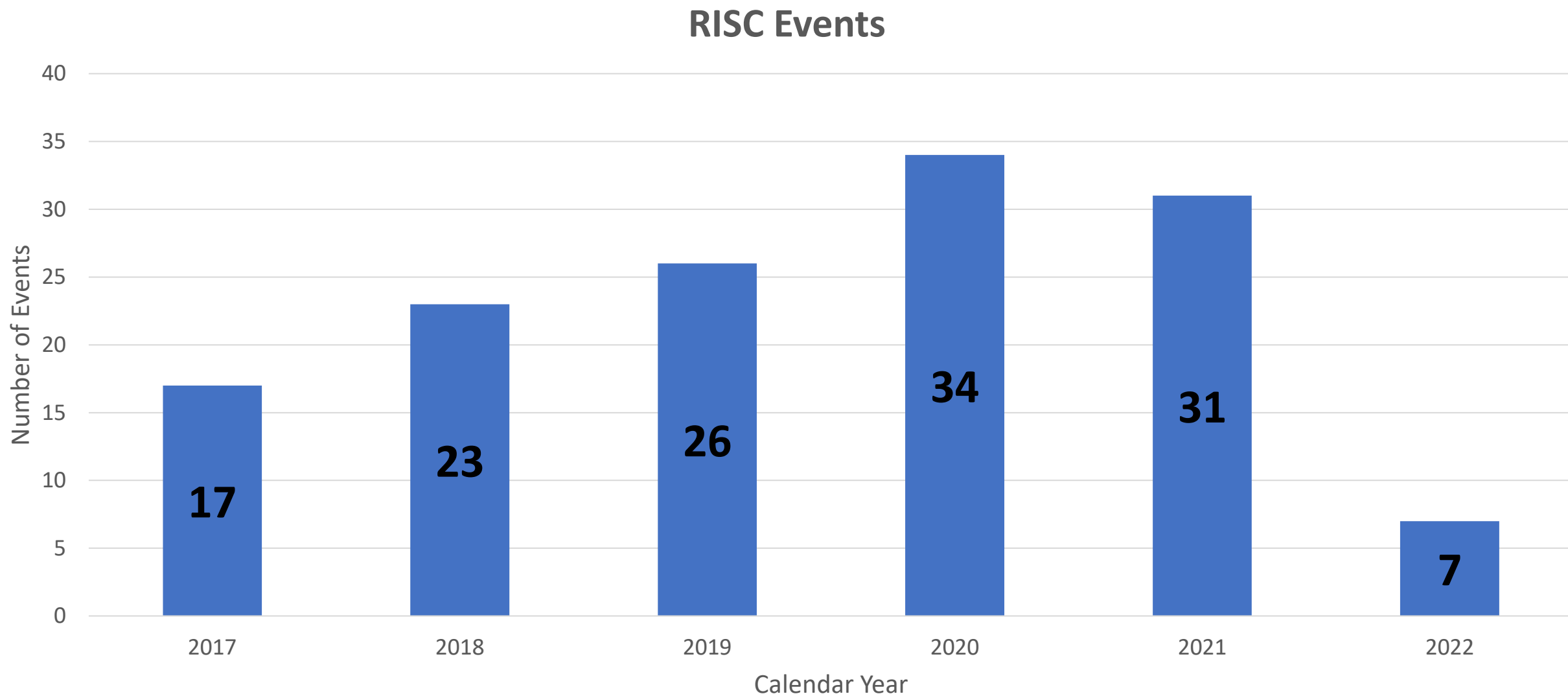
- March 30, 2022
- June 2022
- November 2022



Districtwide Clearance Times



RISC Program



Incident Details

- January 12, 2022
- I-95 SB Ramp to TPK/SR 826 West
- Overturned Tractor-Trailer
- 50 Gallons Diesel Spilled
- Drain Impacted

Responders

Road Rangers	Kauff's of Miami
IRV Operators	Miami-Dade Fire Rescue
APTIM	Louis Berger Services
FHP	



Incident Details

- January 18, 2022
- SR 826 WB Beyond NW 27 Avenue
- Overturned Tractor
- 40 Gallons Diesel Spilled
- 40 Feet of Median Wall Damaged

Responders

FHP	American Towing
Road Rangers	Miami-Dade Fire Rescue
IRV Operators	Louis Berger Services
APTIM	



 **MOVE
OVER** 

or slow down for emergency lights.

#MoveOverFL

FLHSMV





I-395/SR 836/I-95 DESIGN-BUILD PROJECT

Financial Project Numbers: 251688-1-52-01, 423126-1-52-01, 423126-2-52-01, 429300-2-52-01

Miami-Dade TIM Meeting – I-95 Corridor
February 16, 2022





ONGOING CONSTRUCTION ACTIVITIES

- Mainline concrete pavement completed from NW 17 Street to NW 29 Street
- Mainline concrete pavement over 95% completed from NW 8 Street to NW 17 Street
- Ongoing pavement replacement
- Intelligent Transportation Systems installation
- Guardrail installation



1-27-2022



ONGOING AND UPCOMING CONSTRUCTION ACTIVITIES

Ongoing traffic railing construction for the
eastbound SR 836 ramp to northbound I-95





ONGOING AND UPCOMING CONSTRUCTION ACTIVITIES



1-27-2022



ONGOING AND UPCOMING CONSTRUCTION ACTIVITIES



Ongoing pier construction in the jury lot area of the Richard Gerstein E. Justice Building





ONGOING AND UPCOMING CONSTRUCTION ACTIVITIES



Ongoing foundation and pier cap construction in the Grove Park area



1-27-2022



ONGOING AND UPCOMING CONSTRUCTION ACTIVITIES



12-21-2021



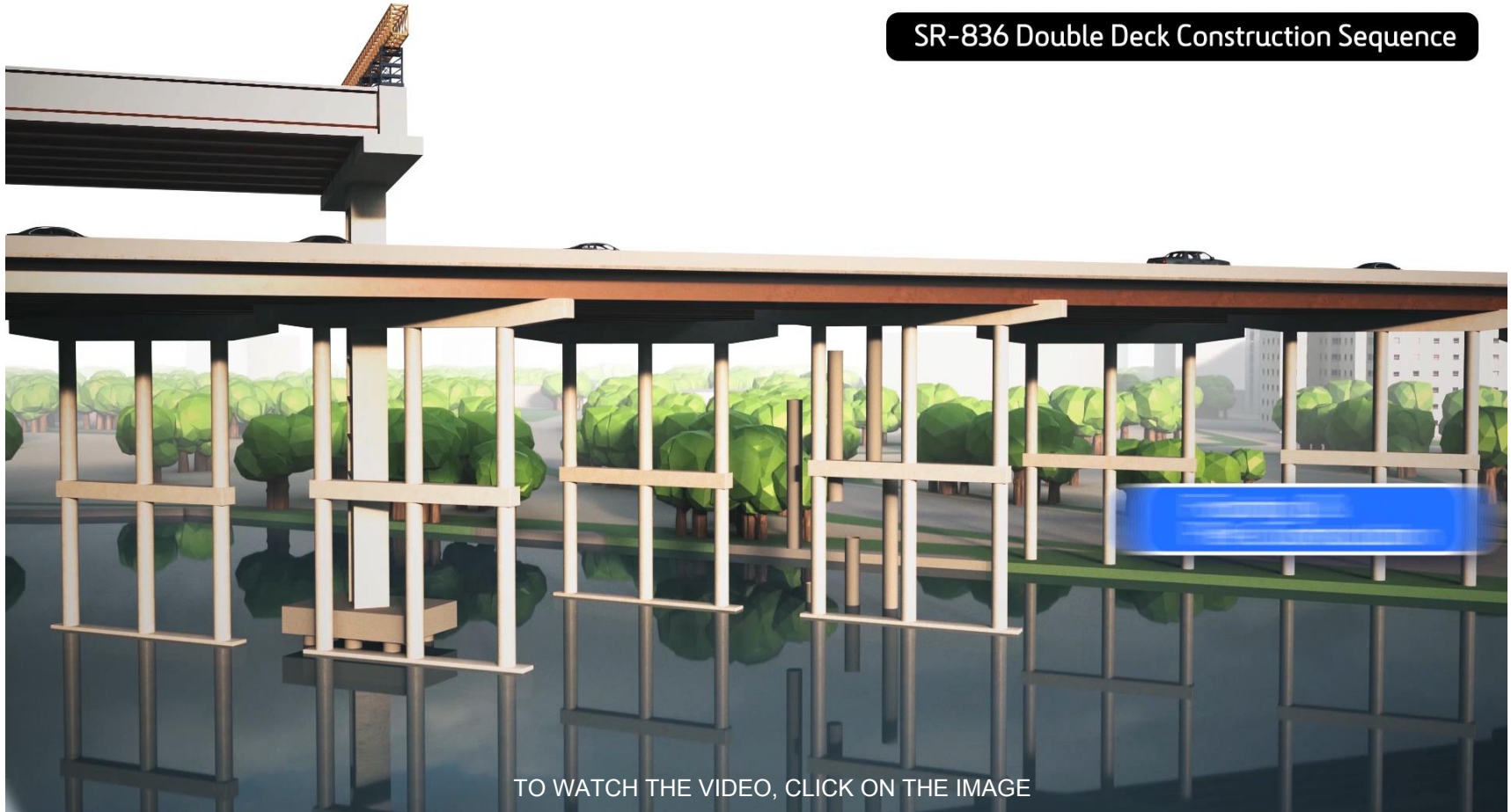
1-27-2022



ONGOING AND UPCOMING CONSTRUCTION ACTIVITIES

CAP/BEAM LAUNCHER

SR-836 Double Deck Construction Sequence



TO WATCH THE VIDEO, CLICK ON THE IMAGE



ONGOING AND UPCOMING CONSTRUCTION ACTIVITIES

SR 836 CASTING YARD

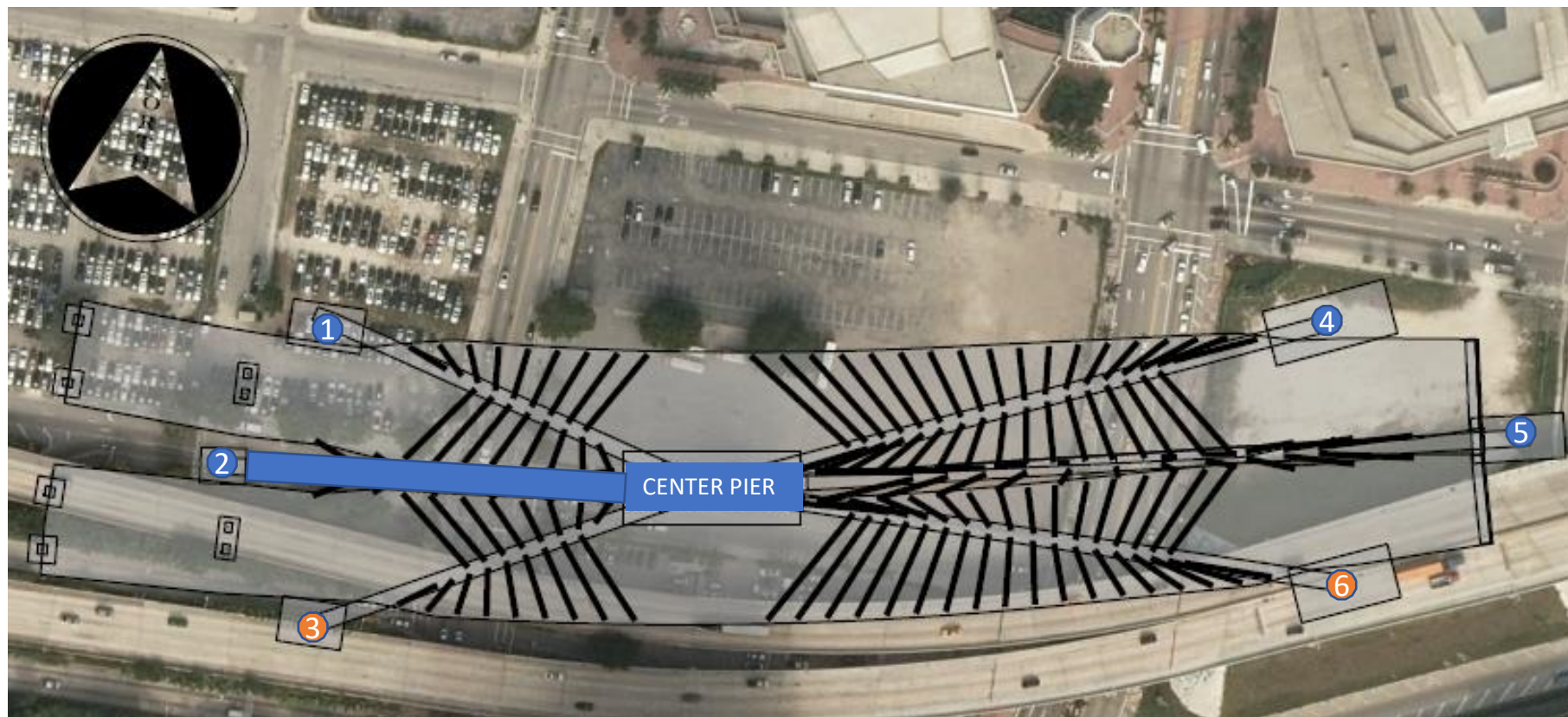


65/140 pier caps have been cast to date



ONGOING AND UPCOMING CONSTRUCTION ACTIVITIES

SIGNATURE BRIDGE FOUNDATIONS



Arch construction will begin with the construction of Arch 2



ONGOING AND UPCOMING CONSTRUCTION ACTIVITIES

ARCH FOUNDATION CONSTRUCTION

Ongoing excavation of Arch 5-footer

East leg poured

Ongoing rebar installation and post
tensioning pipes for Arch 1

Arch 2 pedestal poured. Preparing
for first cast in place arch

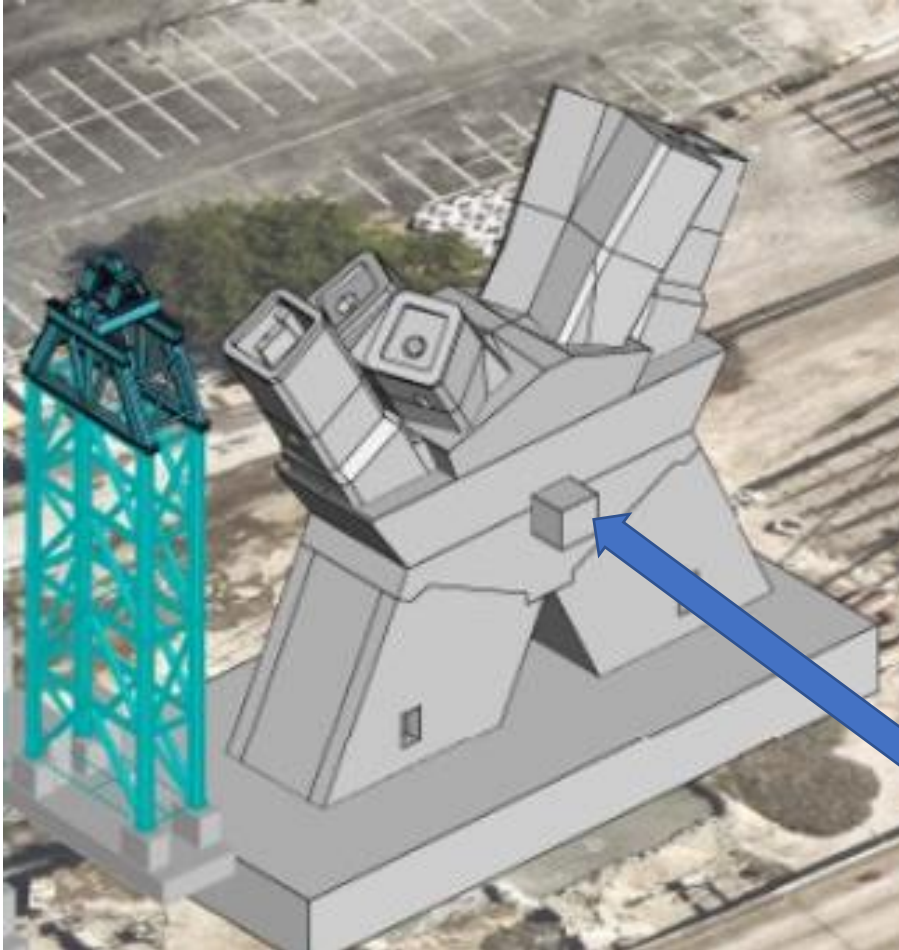


1-27-2022



ONGOING AND UPCOMING CONSTRUCTION ACTIVITIES

Center Pier

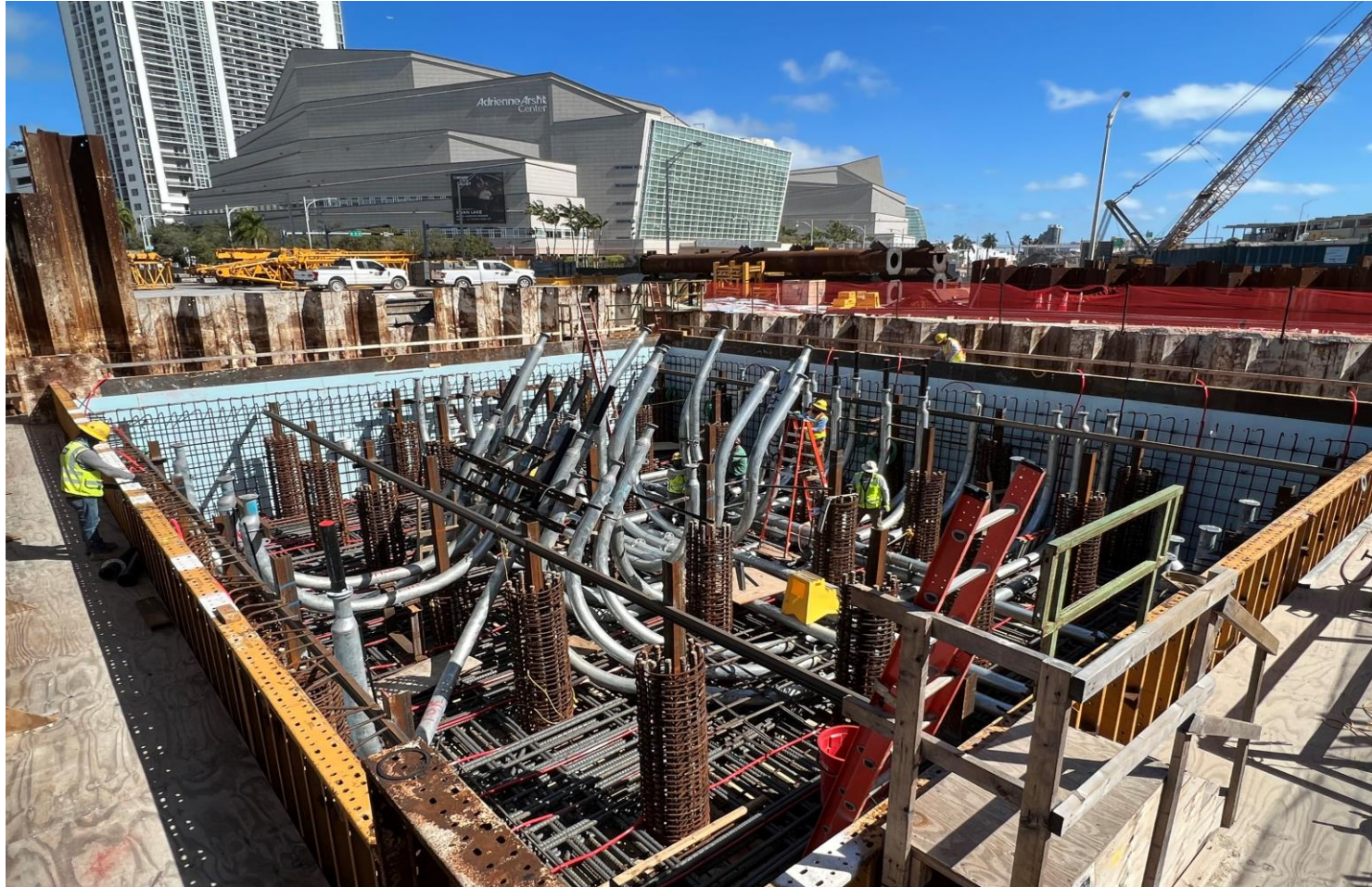


Ongoing preparation for
concrete pour of next level



ONGOING AND UPCOMING CONSTRUCTION ACTIVITIES

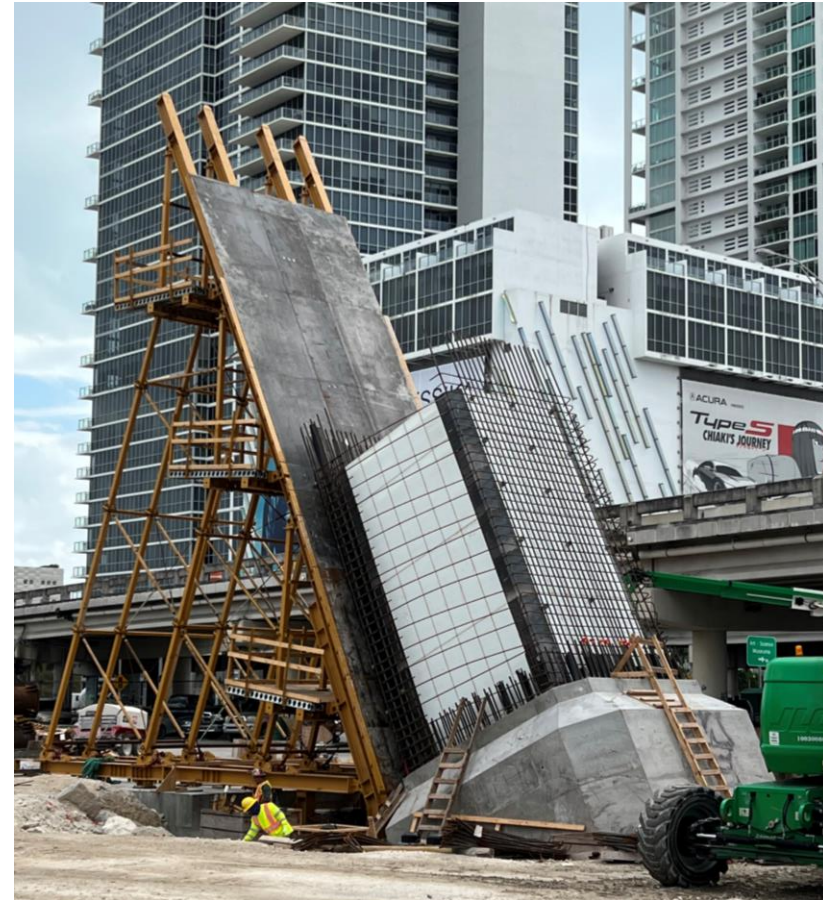
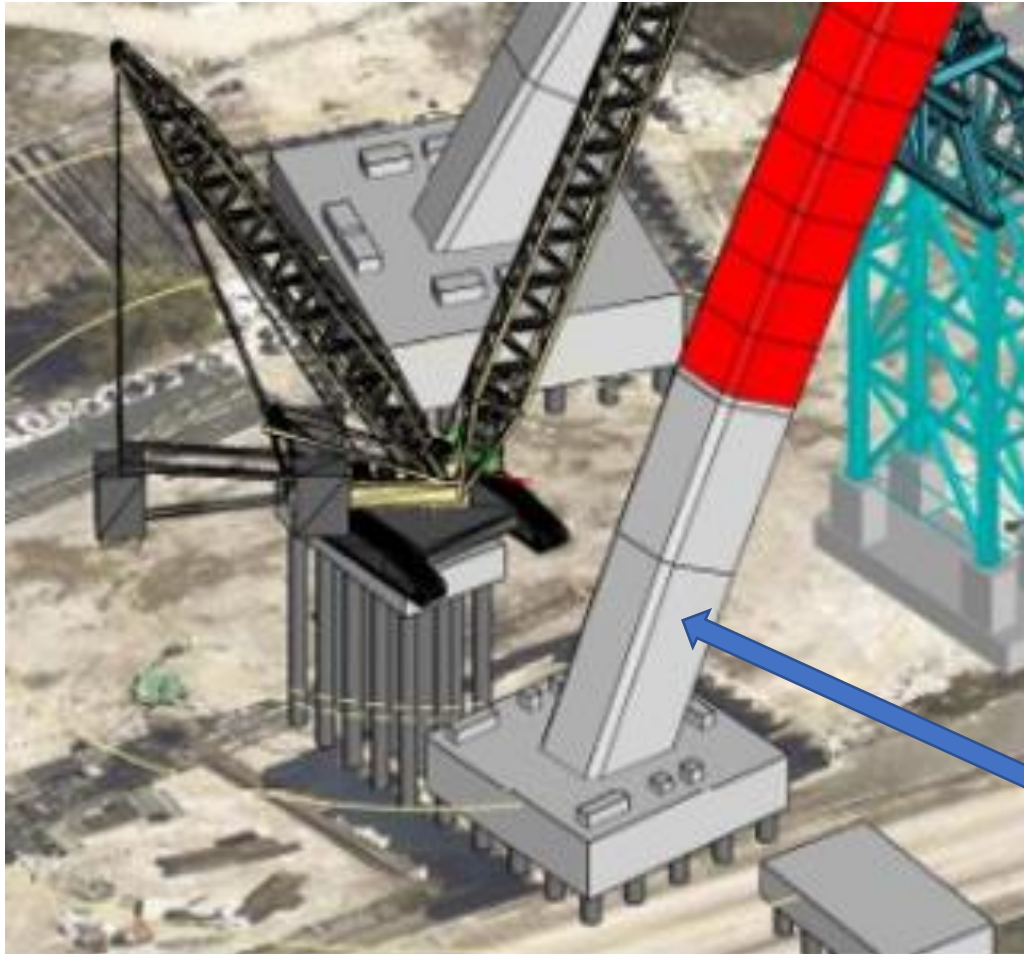
Arch 1





ONGOING AND UPCOMING CONSTRUCTION ACTIVITIES

Arch 2



Ongoing preparation for first
of two starter cast in place
arch segment



ONGOING AND UPCOMING CONSTRUCTION ACTIVITIES

Arch 5





ONGOING AND UPCOMING CONSTRUCTION ACTIVITIES

Ongoing Segmental erection for eastbound
and westbound collector distributor bridges



1-27-2022



**ONGOING AND UPCOMING
CONSTRUCTION ACTIVITIES**

I-395 CASTING YARD





ONGOING AND UPCOMING CONSTRUCTION ACTIVITIES

I-395 CASTING YARD



1409/1947 I-395 Bridge segments cast




15/345 I-395 Signature Bridge arches cast


THANK YOU! QUESTIONS?

www.i-395miami.com



Contact:
Oscar Gonzalez

 786-280-0983

 OGonzalez@mrgmiami.com



.....

FDOT District VI Contamination Emergency Spill Response

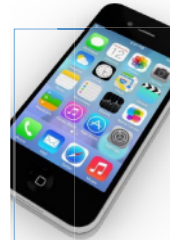


District VI Contamination Unit

Mauricio Gomez, FCCM, CSM
Florida Department Of
Transportation (FDOT)
District Contamination Program
Manager (PM)

**Michael Miller, FDOT/H2O
Environmental**
Contamination Unit Consultant
PM

APTIM
Contamination Assessment &
Remediation (CAR) contractor for
FDOT District VI



Coordinates with SunGuide Traffic Management Center (TMC) to determine incident details.



Mobilizes CAR contractor to cleanup state road (SR) right-of-way (ROW) for spills to allow the road to reopen and mitigate the spread of contamination and risk to the environment.



Coordinates with the Florida State Watch Office and Florida Department of Environmental Protection (FDEP) to enable ROW remediation.

Spill Response & Reporting Regulations

- 62-780.210, Florida Administrative Code (F.A.C.) contamination reporting requires reporting to the State Watch Office (1-800-320-0519) or FDEP Office of Emergency Response as soon as possible, but no later than 24 hours after occurrence for:
 - **Discharges of petroleum or petroleum products equal to, or exceeding, 25 gallons.**
 - **Discharges of petroleum or petroleum products to surface waters of any volume.**
- 62-780.560(1), F.A.C. states “discharges of petroleum or petroleum products of less than 25 gallons onto a pervious surface or that moves onto a pervious surface from an impervious surface” should be cleaned up pursuant to 62-780.500, F.A.C. (Emergency Response) or 62-780.525, F.A.C. (Interim Source Removal)

Spill Environmental Response Sequence



A discharge is reported to Sunguide



Sunguide determines if it is on a SR



Sunguide notifies appropriate Maintenance team



Maintenance team provides Sunguide with incident details



CAR contractor mobilized



Cleanup commences

****Only spills on State Roads are the responsibility of FDOT.****

CAR Contractor responds if above 25 gallons or any volume to surface water, wetlands, environmentally sensitive area or construction zones.

Spill Reporting

- Please report all spills to Sunguide TMC at
305-470-5830
- Do not contact Department employees or contractors directly



Providing incident details to Sunguide:

Onsite maintenance personnel or those in contact with onsite personnel, should collect this information and relay to it to Sunguide.

- Site contact name & phone number.
- Spill location.
- Date & time incident occurred.
- Best way to approach incident to avoid traffic.
- Material spilled.
- Best estimate possible of spill volume.
- Impacts to surface water, soil, pervious surfaces, storm drains, wetlands or environmentally sensitive areas.
- Other agencies notified, on-site, or on the way.
- Name, address, and telephone number of the responsible party.
- FHP case number.



Spill Volume Estimation

Most passenger vehicles do not carry more than 25 gallons of fuel/oil. Additionally, most use gasoline.

Commercial vehicles have larger tanks and can carry in excess of 100 gallons of fuel. Additionally, most use diesel fuel.

- Where is the tank ruptured, at the top, middle, or bottom?
- Is there still liquid in the tanks?
- Ask the driver if his tank was full.

Highway Vehicles⁽⁷⁾

Type of Vehicle	Fuel (gal)	Oil (gal)	Coolant (gal)	Hydraulic* (gal)	Type of Tank
Commercial Vehicles					
Trucks					
Ladder Truck	50	5 to 6	5 to 7	7 to 45	Frame
Fire Engine	50	5 to 6	5 to 7	7 to 15	Frame
Semi Truck(6)	75 to 450	5 to 6	5 to 7	7 to 9	Saddle/Step
Commercial Body(4)(6)	45 to 75	2.5 to 5	3 to 5	3.75 to 7	Saddle/Step
Pickup Truck Body(3)	35 to 40	1.5 to 2	2 to 2.5	2.5 to 3.75	Frame
Step Van(2)	35 to 40	1.5 to 2	2 to 2.5	2.5 to 3.75	Frame
Van Body(1)	22 to 40	1.5	2 to 2.5	2.5 to 3.5	Frame
Trailers					
Day tanks for refrigerated trailers = 25 to 75 gallons, typically diesel					
MC-306 (gasoline tankers) = typically 11,300 gallon capacity including bobtail & trailer					
Bus					
Commercial					
Greyhound Type	145 to 170	6 to 8	5 to 10	7 to 9	Frame
Transit, Articulated	125 to 145	5 to 7	5 to 7	10	Frame
Transit, Gas, 28' to 40'	25	5 to 7	5 to 7	10	Frame
Transit, Diesel, 28' to 40'	100 to 125	5 to 7	5 to 7	10	Frame
School Van Type(1)	30 to 35	1.5 to 2	3 to 4	2.5 to 3.75	Frame
Large Bus Type	75 to 100	5 to 7	5 to 7	5 to 7	Frame
Medium, Conventional(4)	50 to 70	3 to 4.5	3 to 5	3 to 5	Frame
Pickup Trucks					
1 Ton	35 to 40	1.5	2. to 2.5	2.5 to 3.75	Frame
3/4 Ton	35 to 38	1.25	2. to 2.5	2.5 to 3.75	Frame
1/2 Ton	30 to 35	1.25	2. to 2.5	2.5 to 3.5	Frame
Small	13 to 22	1.25	1.5 to 2	2.5 to 3.5	Frame
Vans/Motorhomes					
Full Size	22 to 40	1.25	2. to 2.5	2.5 to 3	Frame
Mini Vans	18 to 27	1.25	2. to 2.5	2 to 2.5	Frame
Motorhome	35 to 120				
Sport Utility Vehicles					
Full Size (Suburban Type)	22 to 40	1.25	2. to 2.5	2.5 to 3	Frame
Mid Size (Bronco Type)	18 to 27	1.25	2. to 2.5	2 to 2.5	Frame
Passenger Car					
Full Size	22 to 26	1.25 to 1.5	2 to 2.5	2.5 to 3.75	Frame
Mid Size	16.5 to 22	1.25	2 to 2.5	2.5 to 3.5	Frame
Compact	14 to 16	1 to 1.5	1.5 to 2	2.0 to 2.5	Frame
Sub Compact	9 to 14	.75 to 1	1.5 to 2	1.5 to 2.0	Frame



Spill Volume Estimation

- A 5 gallon bucket of water leaves a spill area on pavement of approximately 300 square feet.





Spill Volume Estimation

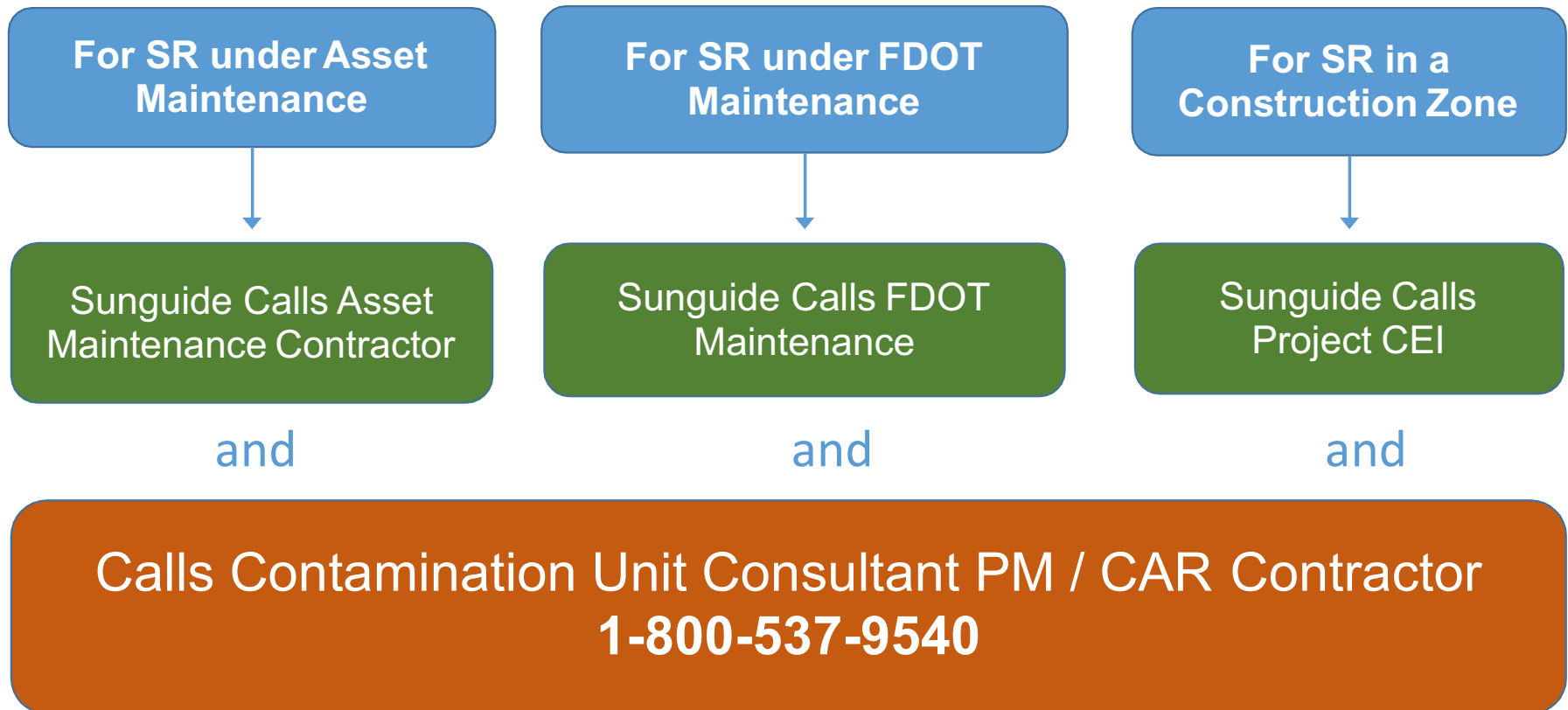
- A 25 gallon spill would be an area of 1,500 square feet.





Sunguide Spill Coordination

For spills on State Roads greater than 25 gallons; or any volume to surface water, wetlands, environmentally sensitive areas and construction zones.





Sunguide

Role & Responsibilities

1. Receive notification of discharge incident.
2. Determine if the spill is on a SR.
3. Call appropriate Maintenance team (FDOT Maintenance yard or Asset Maintenance contractor).
4. Provide site-specific details to the Contamination Unit Consultant PM / CAR Contractor via the CAR Contractor emergency response number.

1-800-537-9540

5. Track incident.
6. Conduct after action review.



FDOT Maintenance or Asset Maintenance Contractor Responsibilities

- Provides spill detail to Sunguide.
- Provides MOT for spill response.
- Coordinates with CAR contractor during response activities.
- Clean up spills of 25 gallons or less that have not impacted surface water, wetlands, and environmentally sensitive area.

Contamination Unit Consultant PM Responsibilities

- Coordinates with Sunguide & CAR contractor during response activities as warranted.

CAR Contractor Responsibilities

- Provides spill cleanup services for spills greater than 25 gallons.
- Coordinates with Contamination Unit Consultant PM & Sunguide.
- Contact FDEP State Watch Office to report spills over 25 gallons or spills less than 25 gallons on pervious surface or surface water.

SR Under FDOT Maintenance or Asset Maintenance Responsibilities

Construction Contractor Responsibilities

- Provides spill detail to Sunguide.
- Provides MOT for spill response.
- Coordinates with CAR contractor during response activities.

Contamination Unit Consultant PM Responsibilities

- Coordinates with Sunguide & CAR contractor during response activities as warranted.

CAR Contractor Responsibilities

- Provides spill cleanup services regardless of volume.
- Coordinates with Contamination Unit Consultant PM & Sunguide.
- Contact FDEP State Watch Office to report spills over 25 gallons or spills less than 25 gallons on pervious surface or surface water.

SR in Construction Zone

Responsibilities

After Action Review



Sunguide conducts After Action Review with input from all parties involved in the response.



QUESTIONS ?