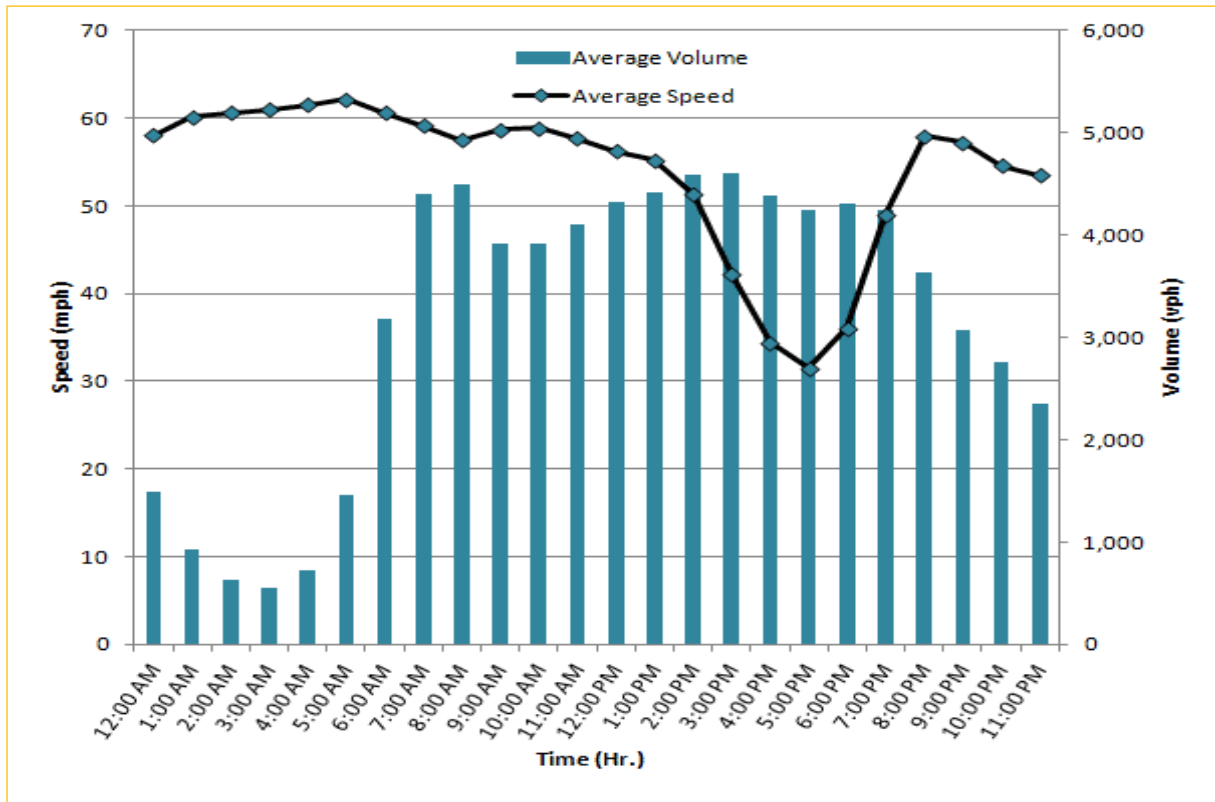


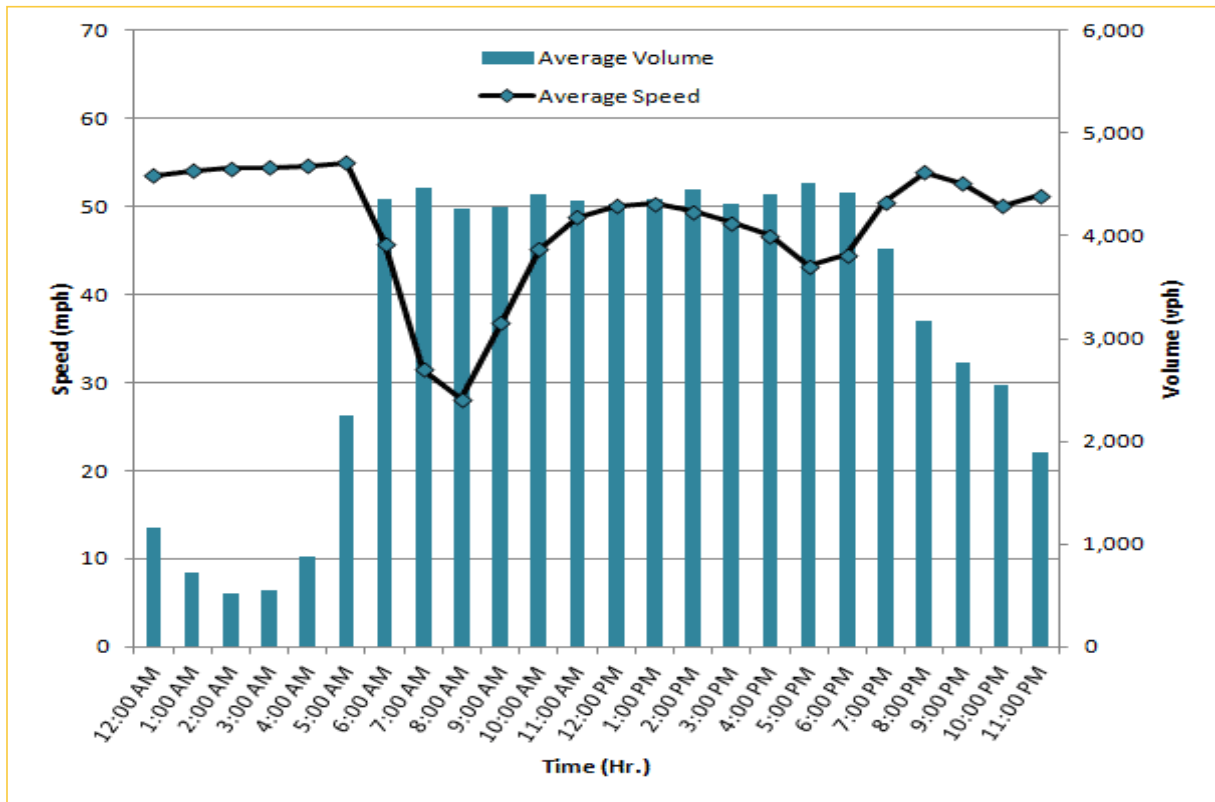
TRAVEL TIME RELIABILITY REPORT

Weekdays Speeds and Volumes by Time of Day*

I-95 Northbound: 17.3 Miles
From: US-1
To: Miami-Dade / Broward County Line

I-95 Southbound: 17.3 Miles
From: Miami-Dade / Broward County Line
To: US-1

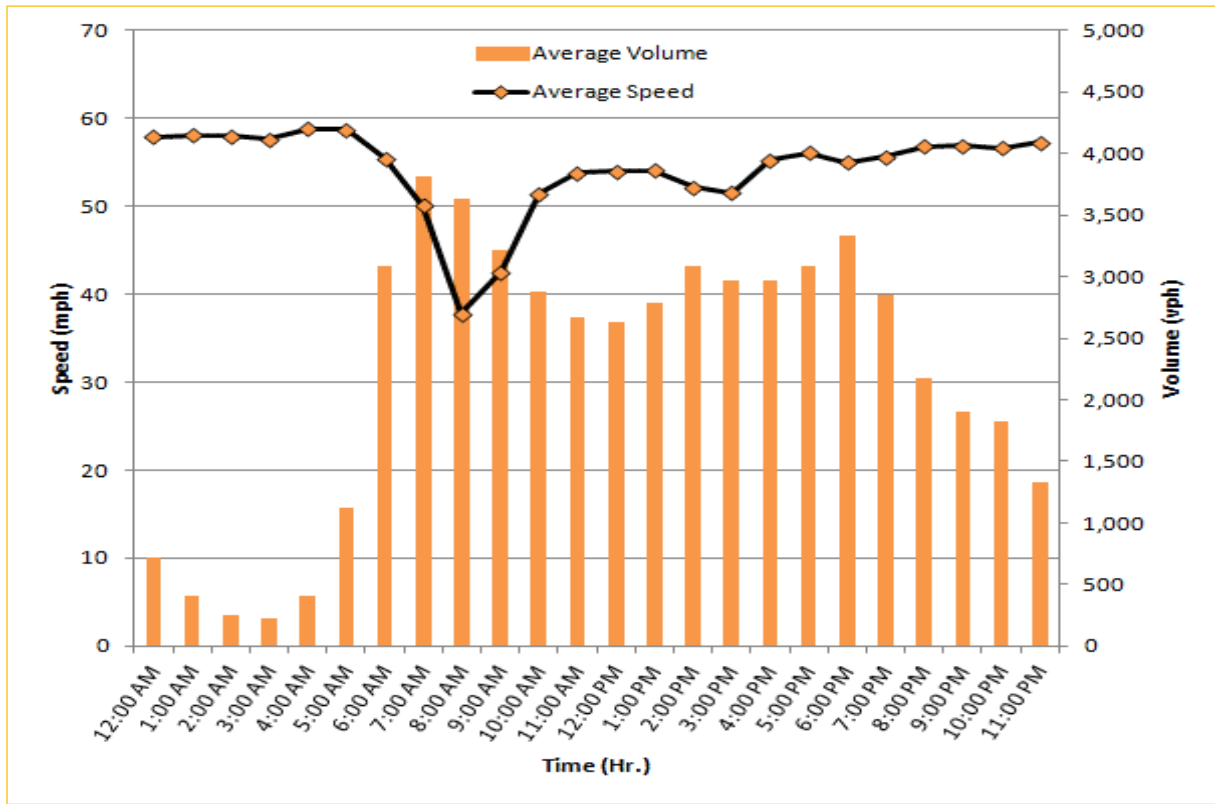



* Twelve-month average from April 1st, 2015 to March 31st, 2016. Excludes express lanes.

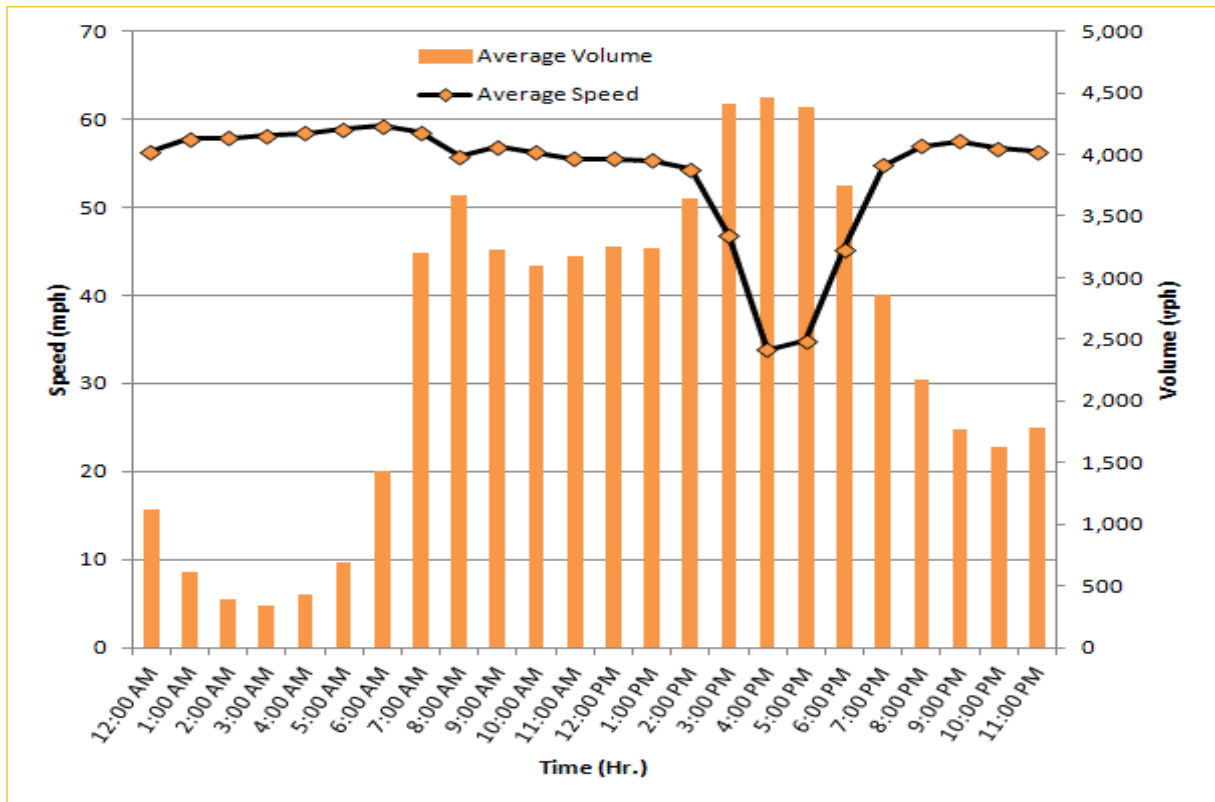
TRAVEL TIME RELIABILITY REPORT

Weekdays Speeds and Volumes by Time of Day*

I-195 Eastbound: 4.9 Miles
From: West of North Miami Avenue
To: West of Alton Road



I-195 Westbound: 4.9 Miles
From: West of Alton Road
To: West of North Miami Avenue


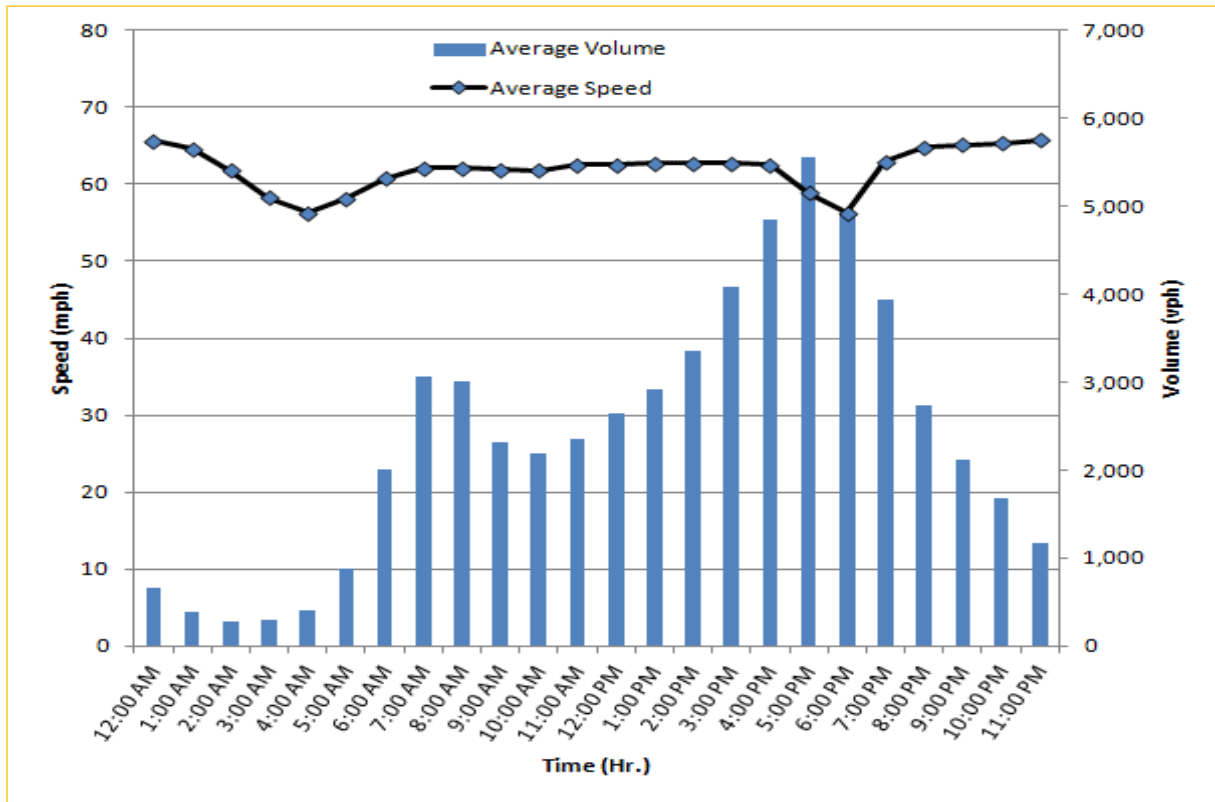


* Twelve-month average from April 1st, 2015 to March 31st, 2016.

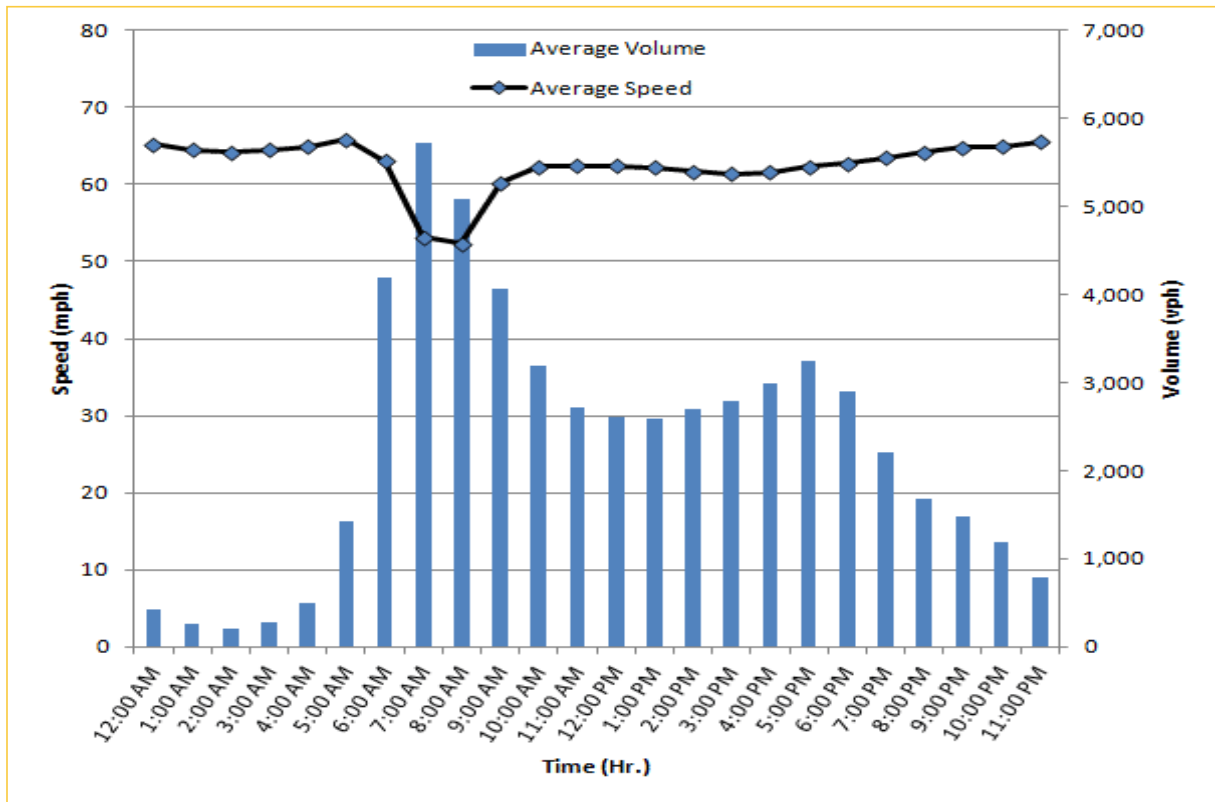
TRAVEL TIME RELIABILITY REPORT

Weekdays Speeds and Volumes by Time of Day*

I-75 Northbound: 5.4 Miles
From: West of SR 826
To: North of Florida's Turnpike

I-75 Southbound: 5.4 Miles
From: North of Florida's Turnpike
To: West of SR 826

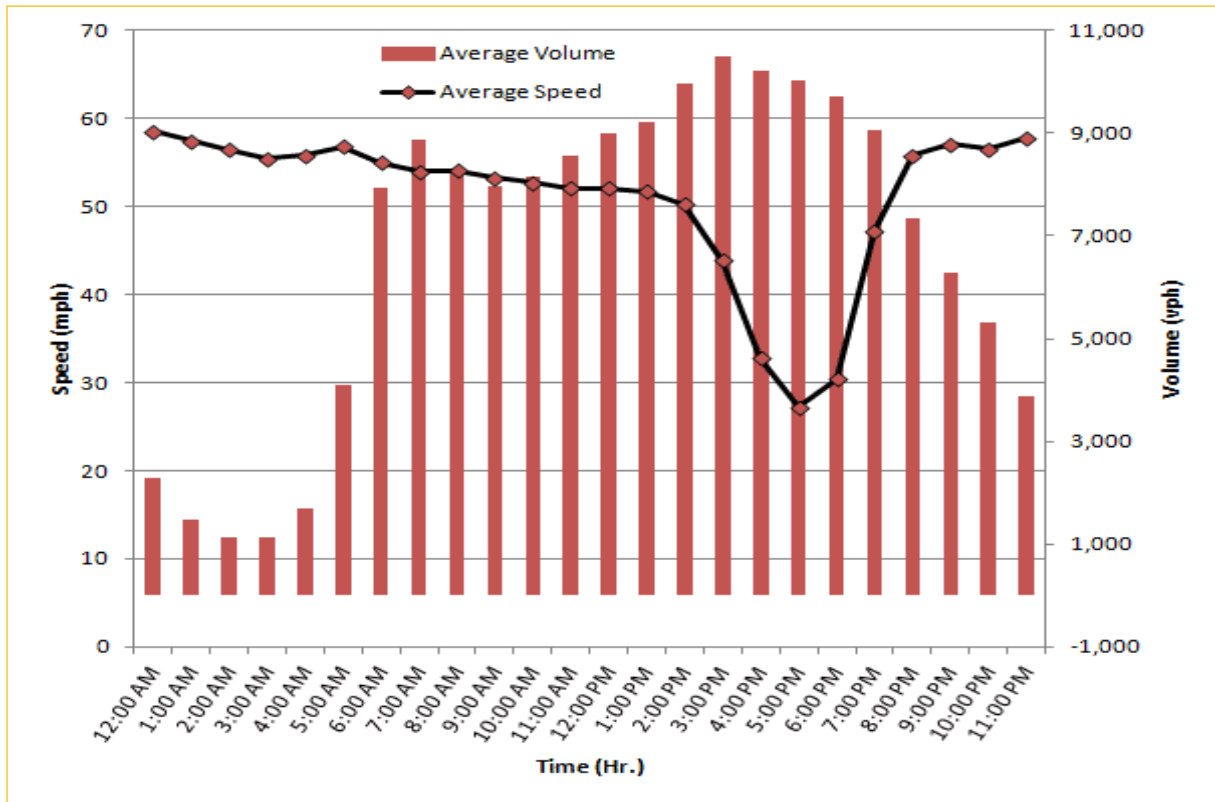



* Twelve-month average from April 1st, 2015 to March 31st, 2016.

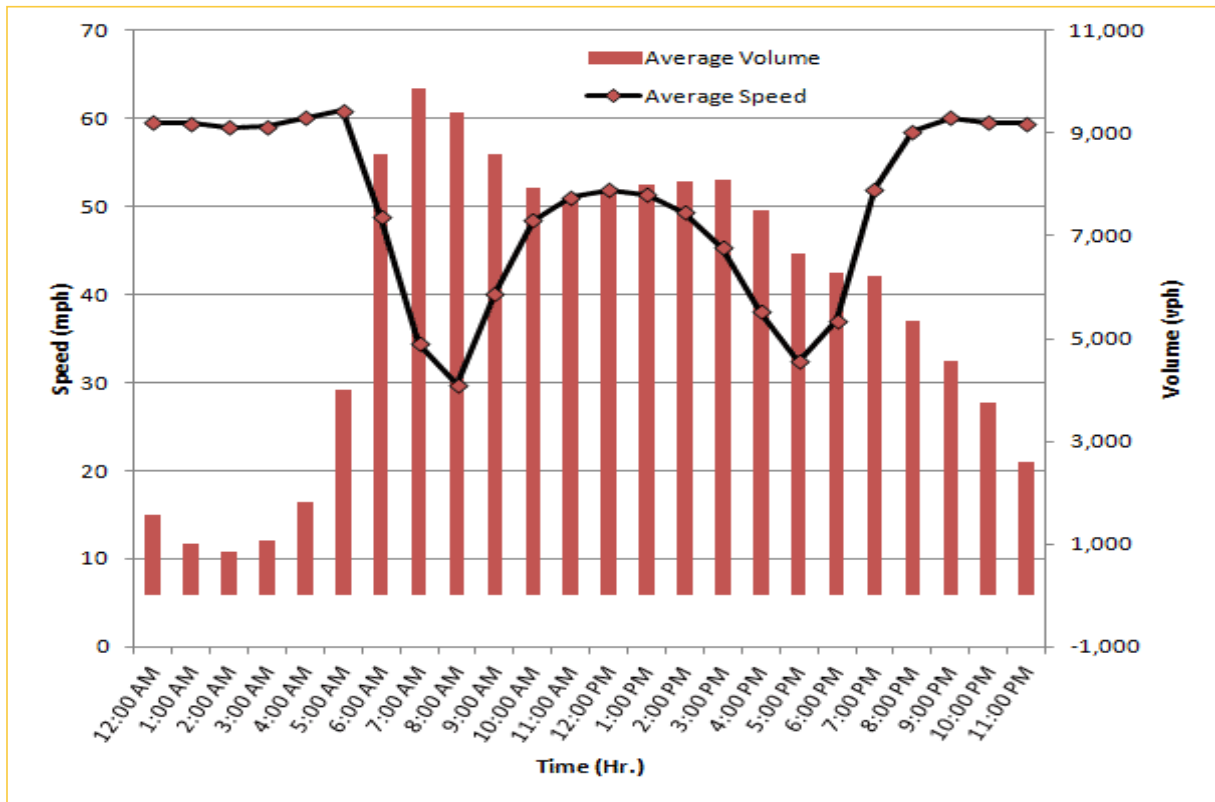
TRAVEL TIME RELIABILITY REPORT

Weekdays Speeds and Volumes by Time of Day*

SR 826 Northbound: 8.4 Miles
From: South of NW 25 Street
To: North of NW 154 Street



SR 826 Southbound: 8.4 Miles
From: North of NW 154 Street
To: South of NW 25 Street

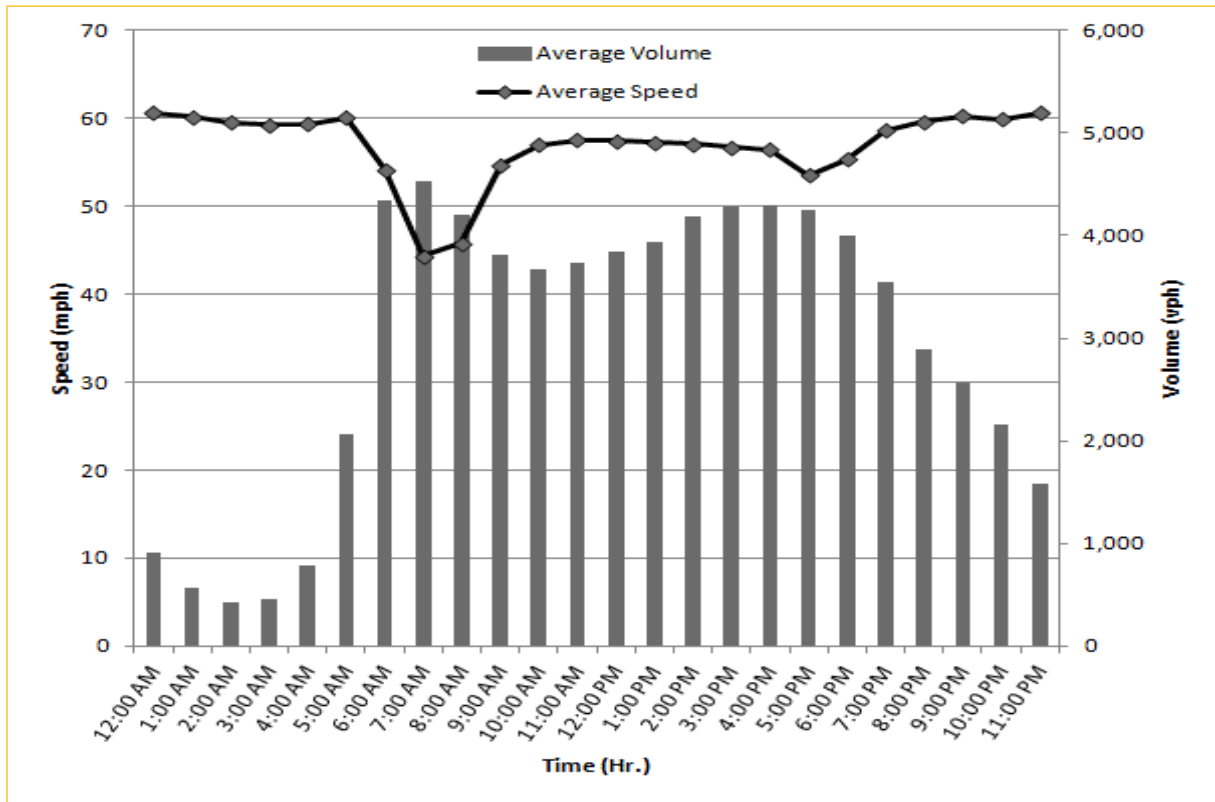


* Twelve-month average from April 1st, 2015 to March 31st, 2016.

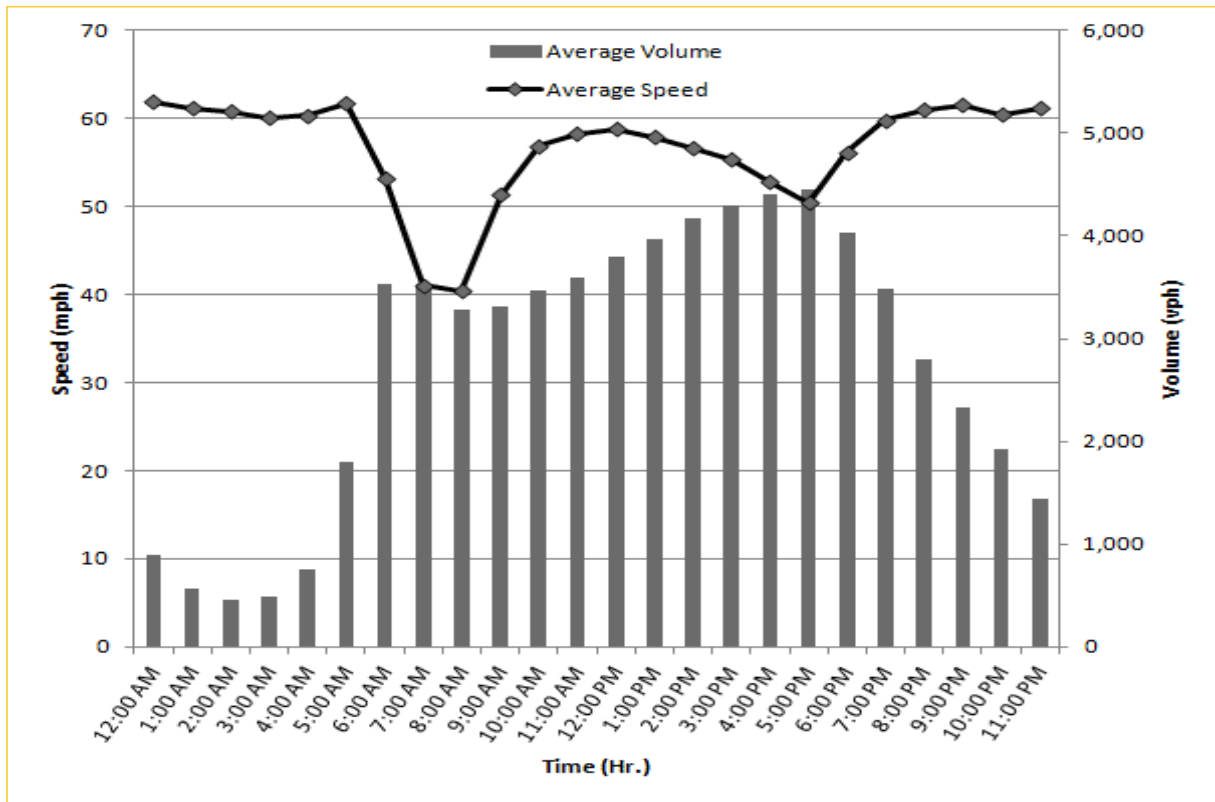
TRAVEL TIME RELIABILITY REPORT

Weekdays Speeds and Volumes by Time of Day*

SR 826 Eastbound: 7.1 Miles
From: West of NW 67 Avenue
To: East of NW 12 Avenue



SR 826 Westbound: 7.1 Miles
From: East of NW 12 Avenue
To: West of NW 67 Avenue

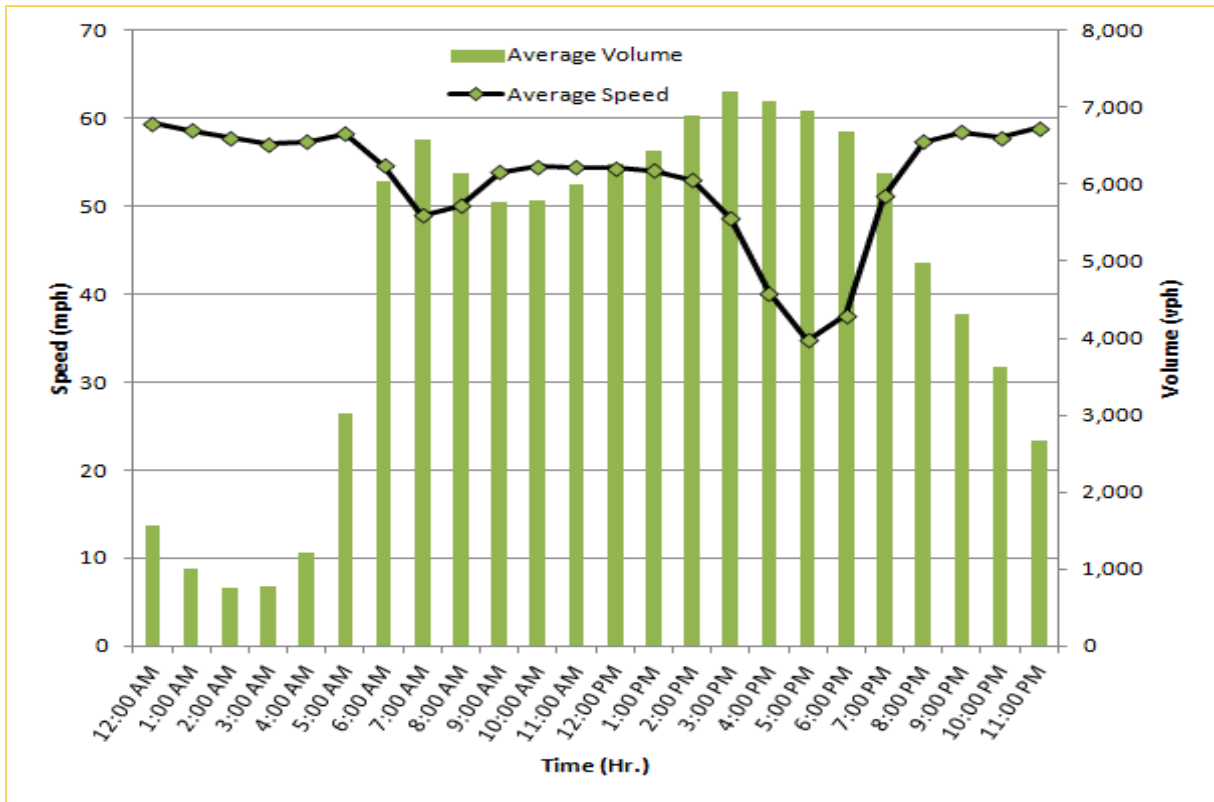


* Twelve-month average from April 1st, 2015 to March 31st, 2016.

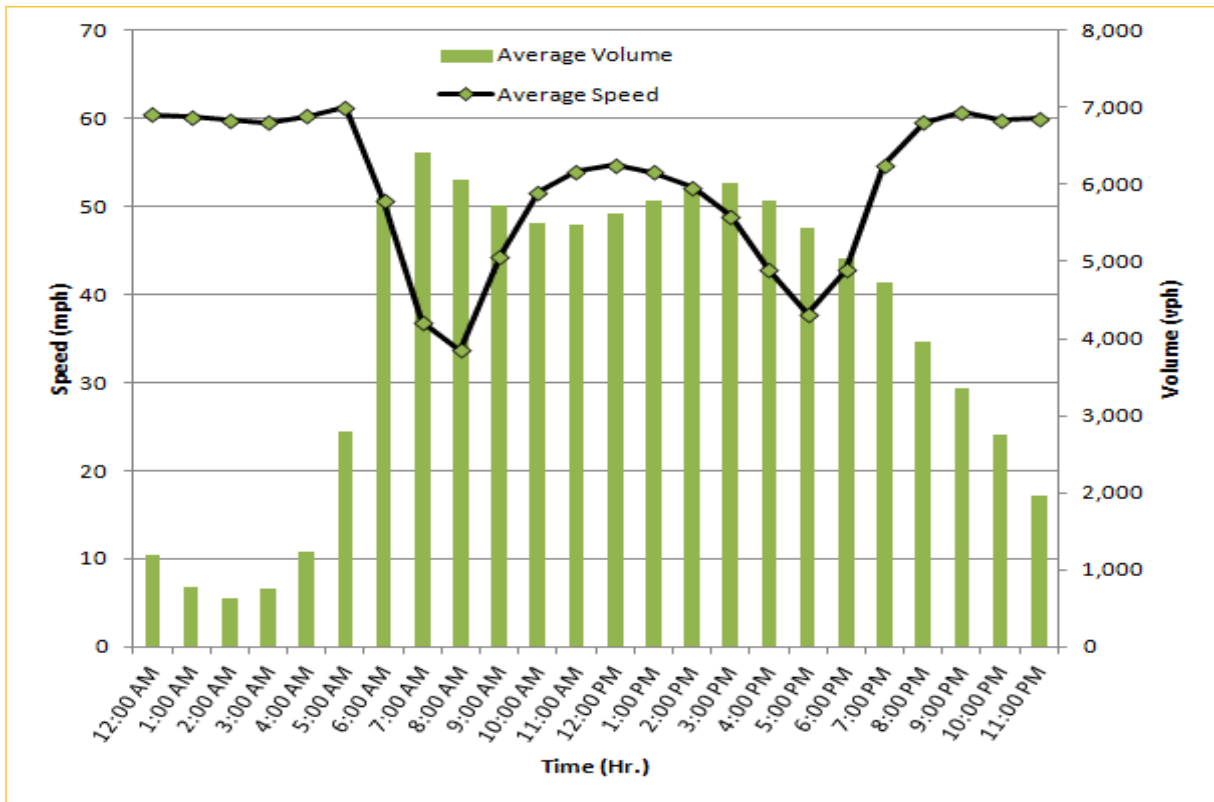
TRAVEL TIME RELIABILITY REPORT

Weekdays Speeds and Volumes by Time of Day*

SR 826 Northbound/Eastbound : 15.6 Miles
From: South of NW 25 Street
To: East of NW 12 Avenue

SR 826 Southbound/Westbound: 15.6 Miles
From: East of NW 12 Avenue
To: South of NW 25 Street

* Twelve-month average from April 1st, 2015 to March 31st, 2016.