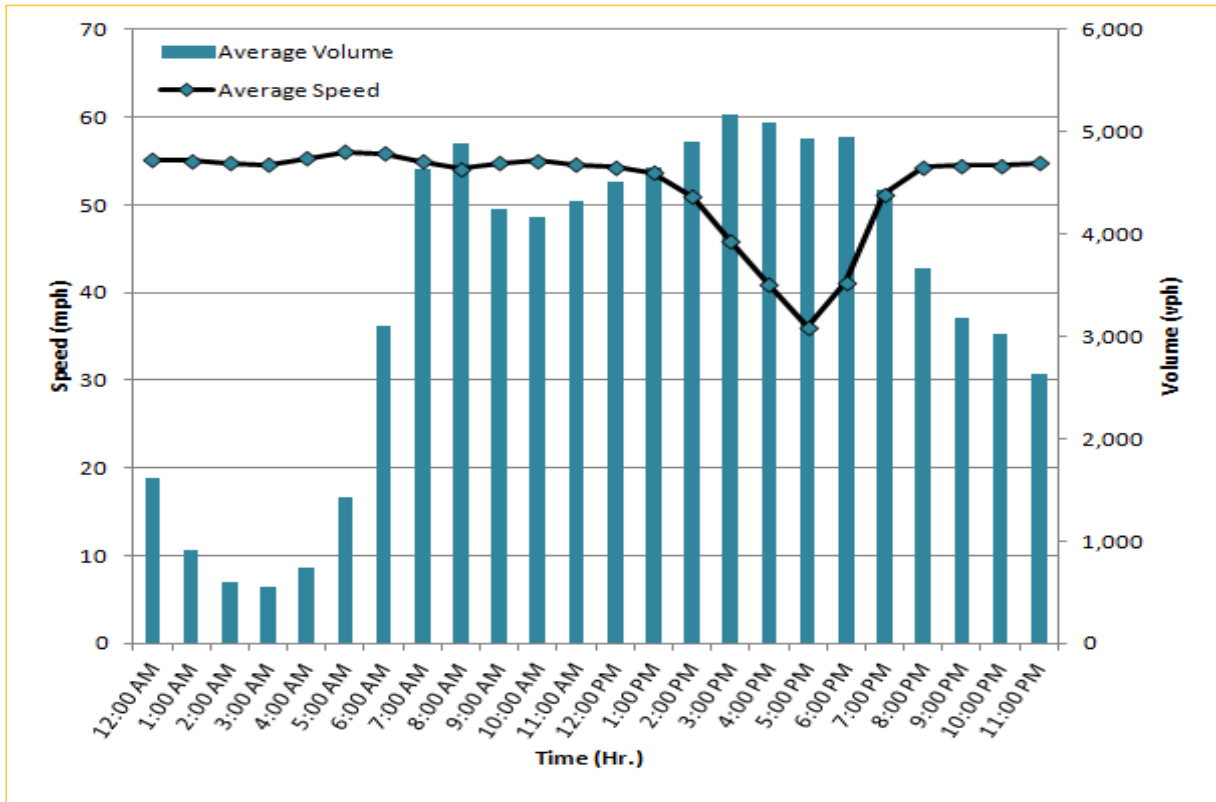
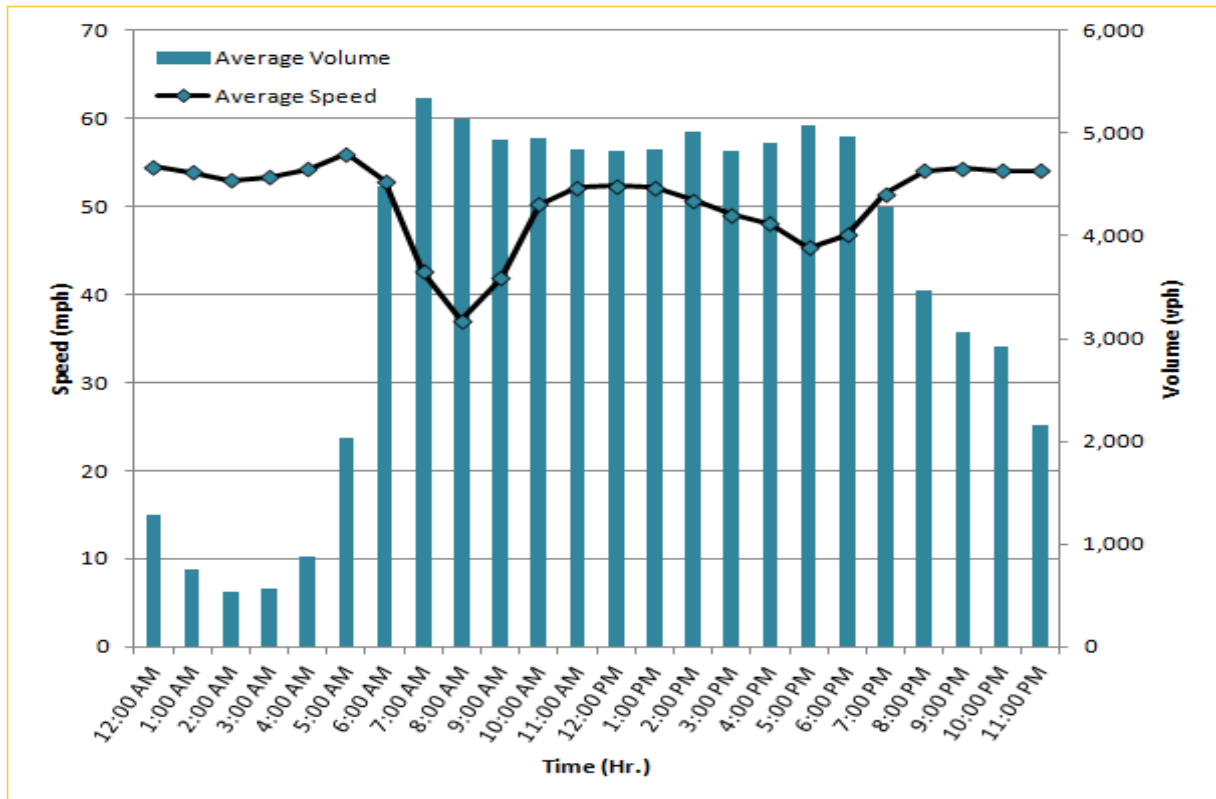


## Weekdays Speeds and Volumes by Time of Day\*

**I-95 Northbound: 17.3 Miles**  
From: US-1  
To: Miami-Dade / Broward County Line

**I-95 Southbound: 17.3 Miles**  
From: Miami-Dade / Broward County Line  
To: US-1

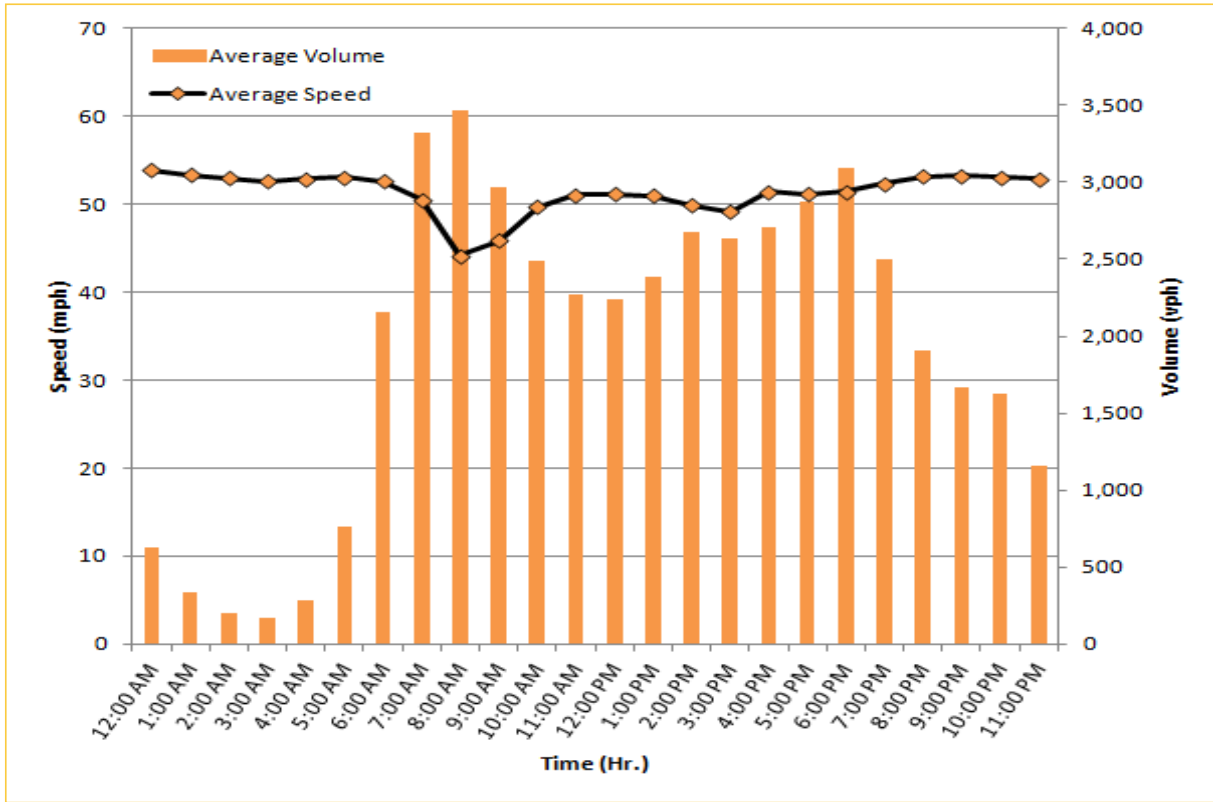



\* Twelve-month average speeds and volumes from December 2012 - November 2013. Excludes express lanes.

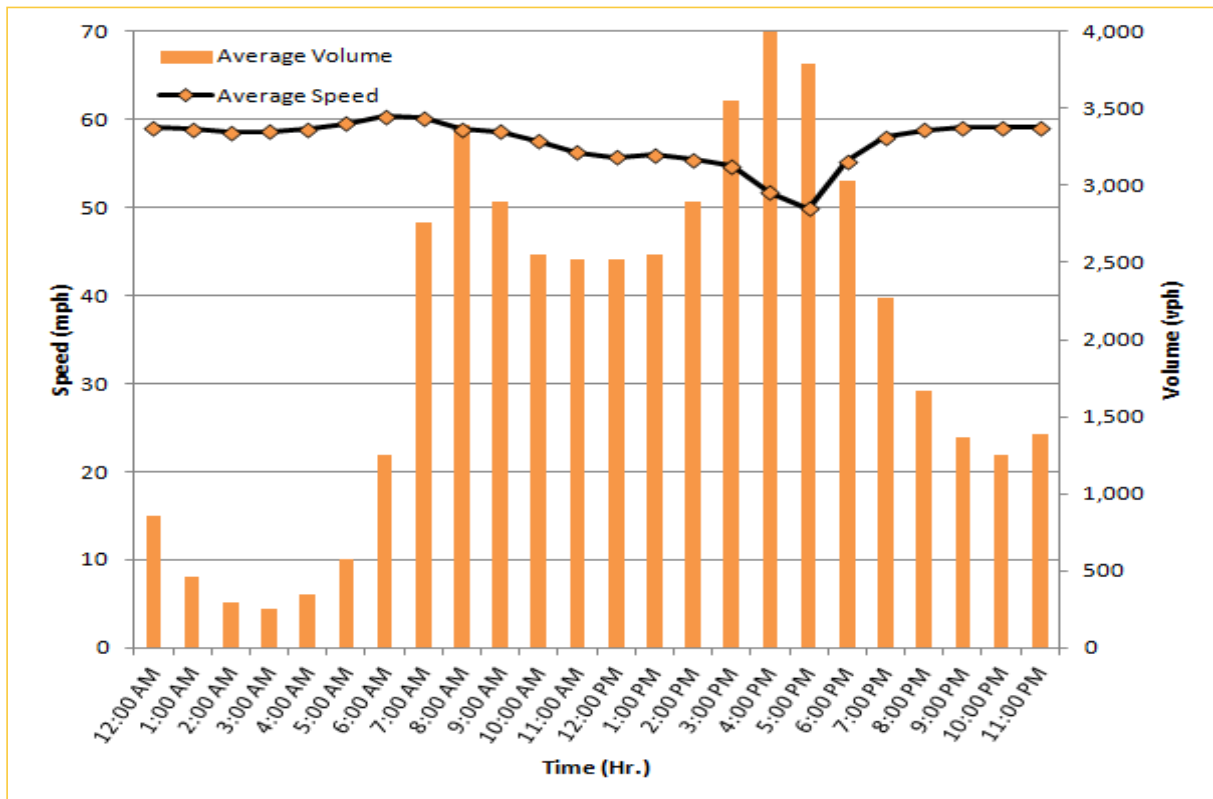


## Weekdays Speeds and Volumes by Time of Day\*

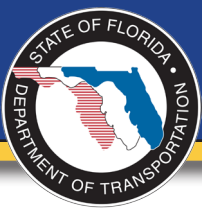
**I-195 Eastbound: 4.9 Miles**  
From: West of North Miami Avenue  
To: West of Alton Road



**I-195 Westbound: 4.9 Miles**  
From: West of Alton Road  
To: West of North Miami Avenue

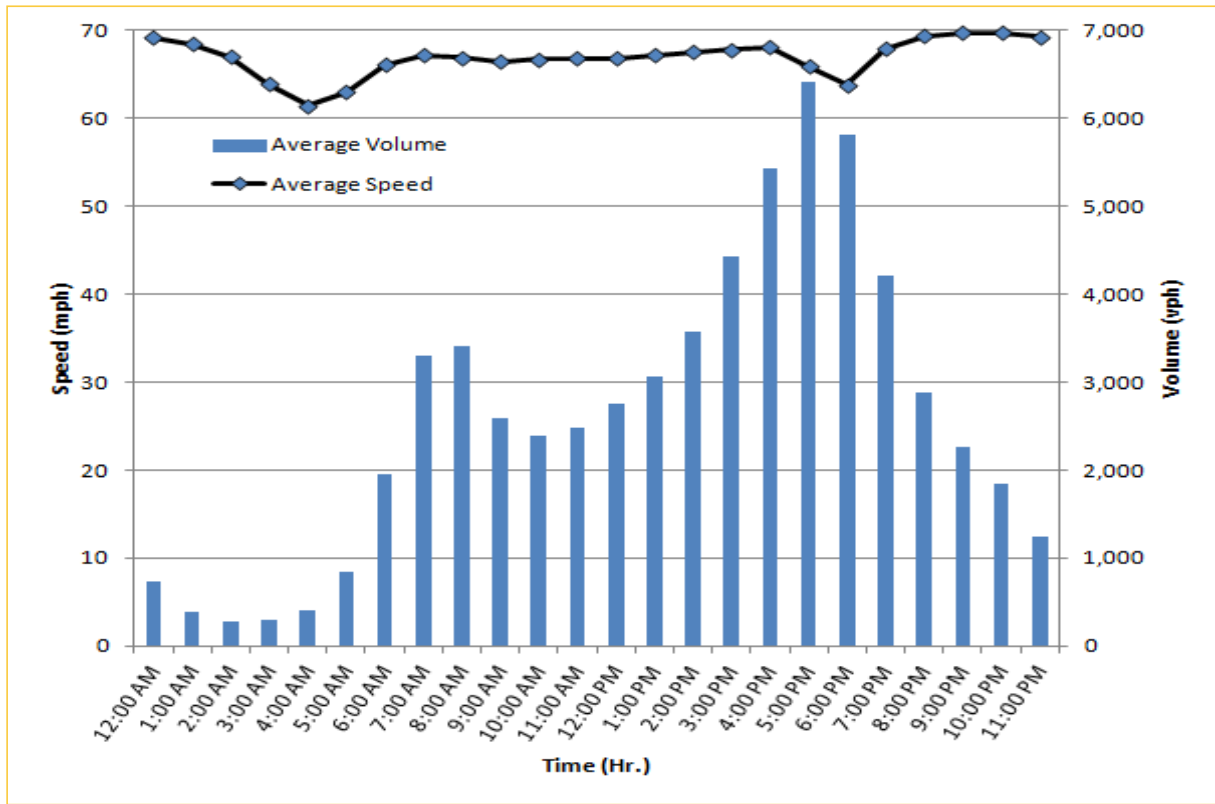


\* Twelve-month average speeds and volumes from December 2012 - November 2013.

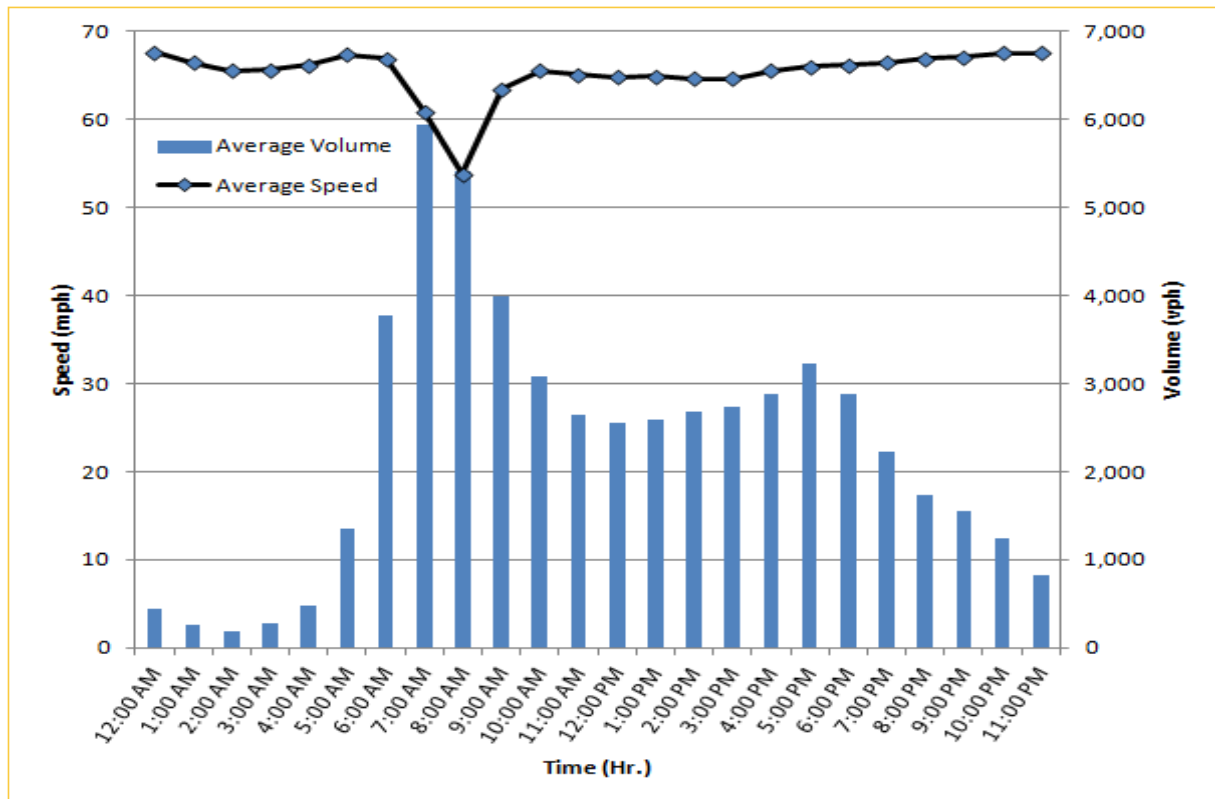


## Weekdays Speeds and Volumes by Time of Day\*

**I-75 Northbound: 5.4 Miles**  
From: West of SR 826  
To: North of Florida's Turnpike

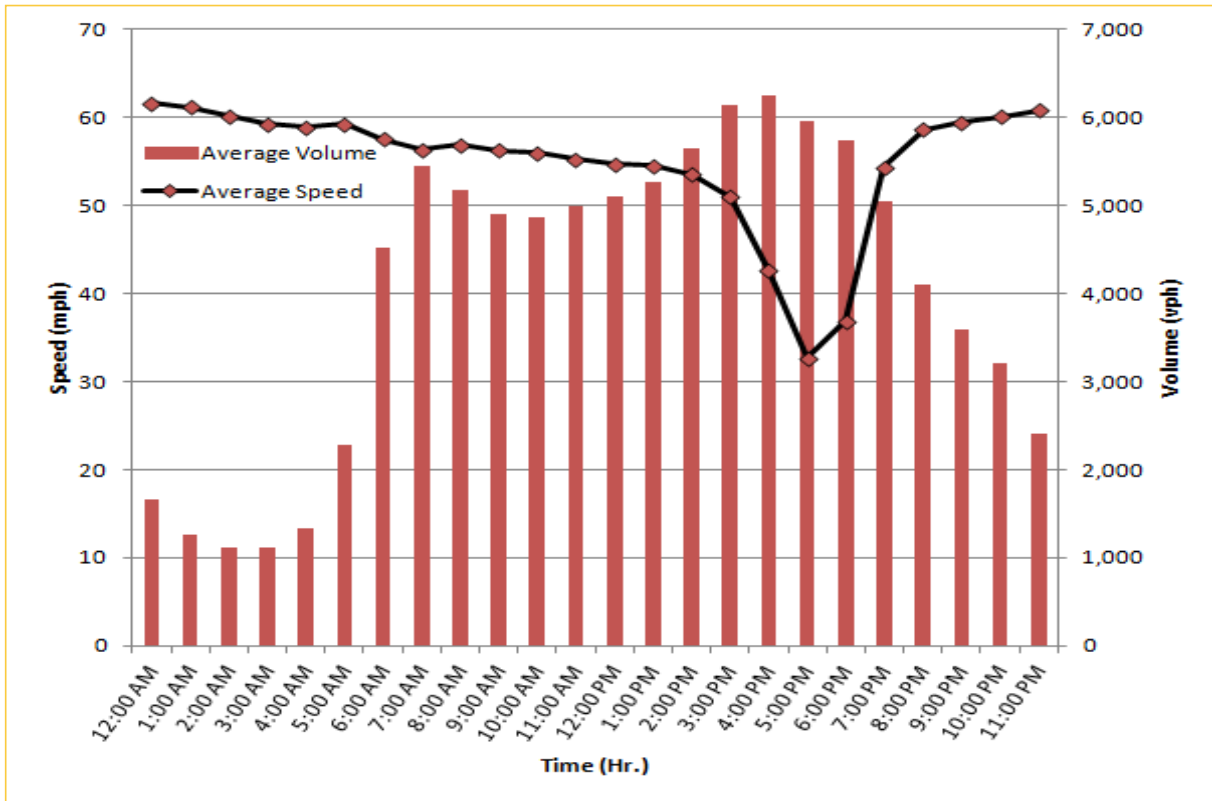
**I-75 Southbound: 5.4 Miles**  
From: North of Florida's Turnpike  
To: West of SR 826

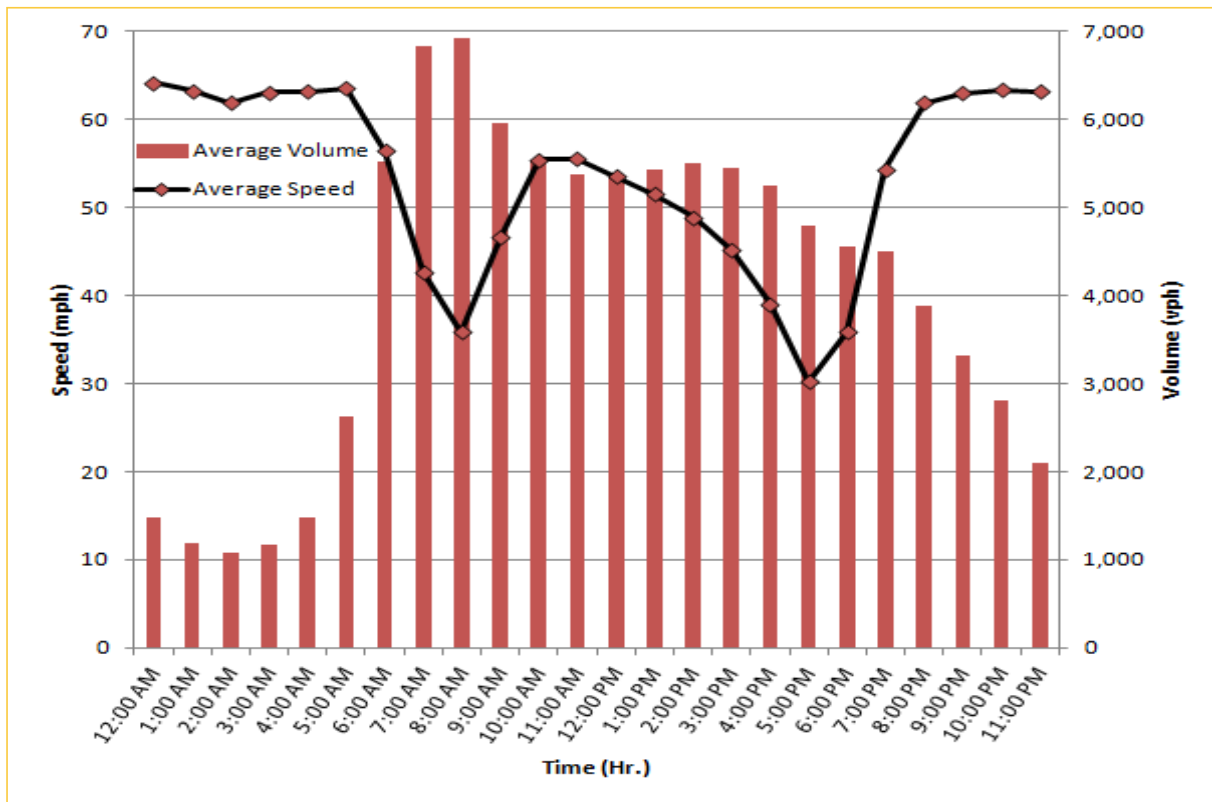
\* Twelve-month average speeds and volumes from December 2012 - November 2013.

## Weekdays Speeds and Volumes by Time of Day\*

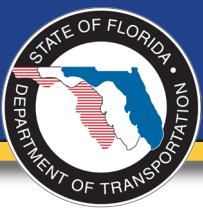
**SR 826 Northbound: 8.4 Miles**  
From: South of NW 25 Street  
To: North of NW 154 Street



**SR 826 Southbound: 8.4 Miles**  
From: North of NW 154 Street  
To: South of NW 25 Street

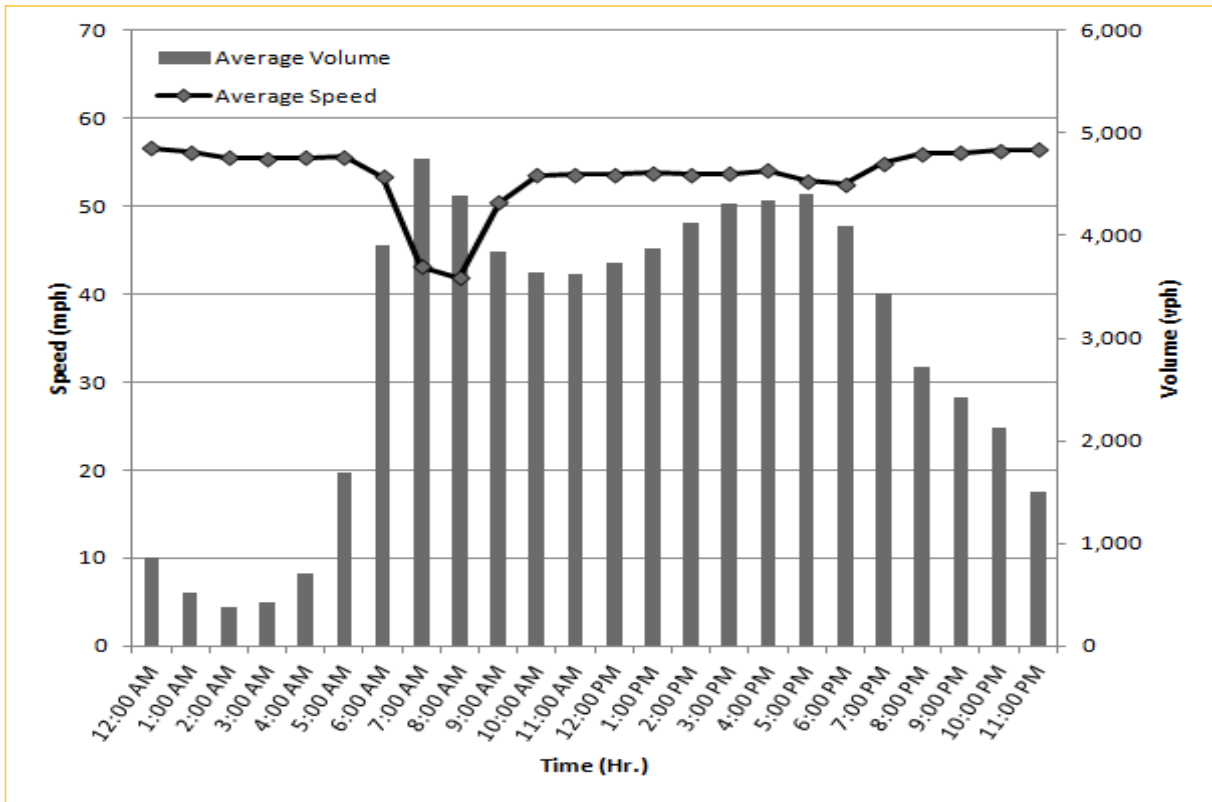


\* Twelve-month average speeds and volumes from December 2012 - November 2013.

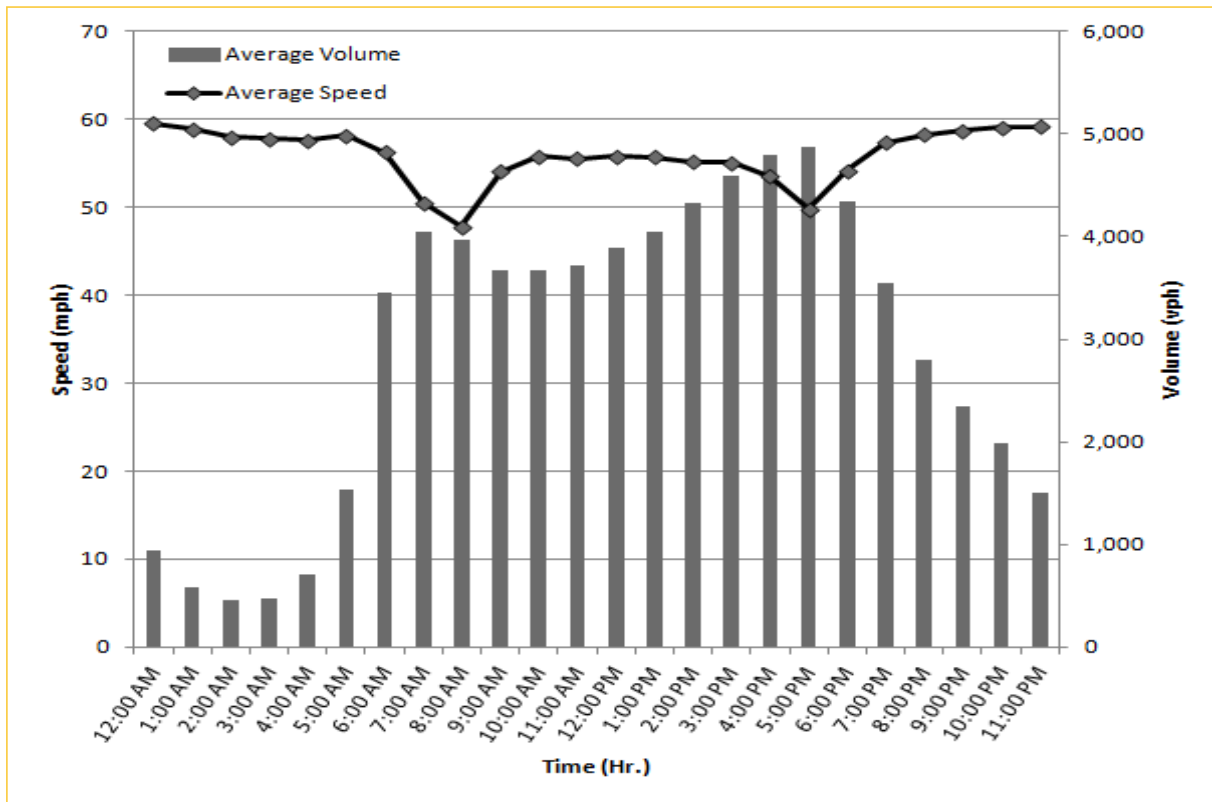


## Weekdays Speeds and Volumes by Time of Day\*

SR 826 Eastbound: 7.1 Miles  
From: West of NW 67 Avenue  
To: East of NW 12 Avenue



SR 826 Westbound: 7.1 Miles  
From: East of NW 12 Avenue  
To: West of NW 67 Avenue

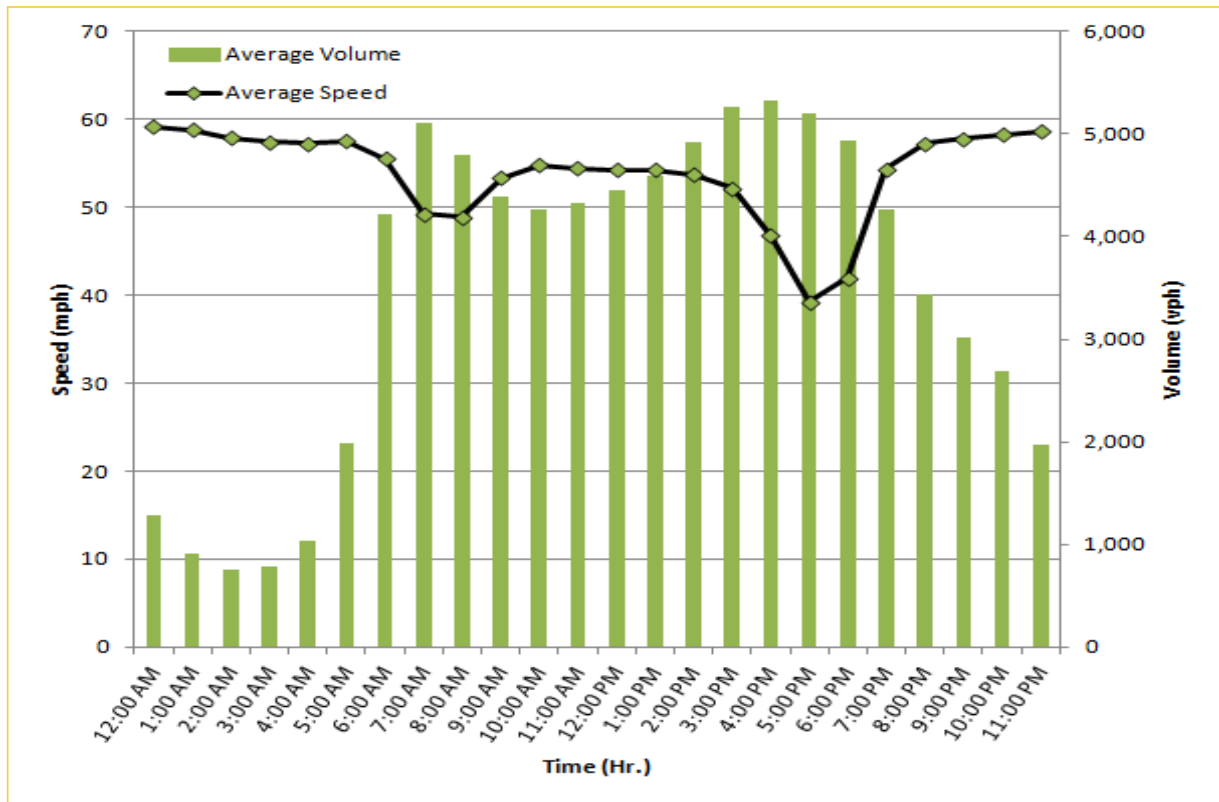


\* Twelve-month average speeds and volumes from December 2012 - November 2013.

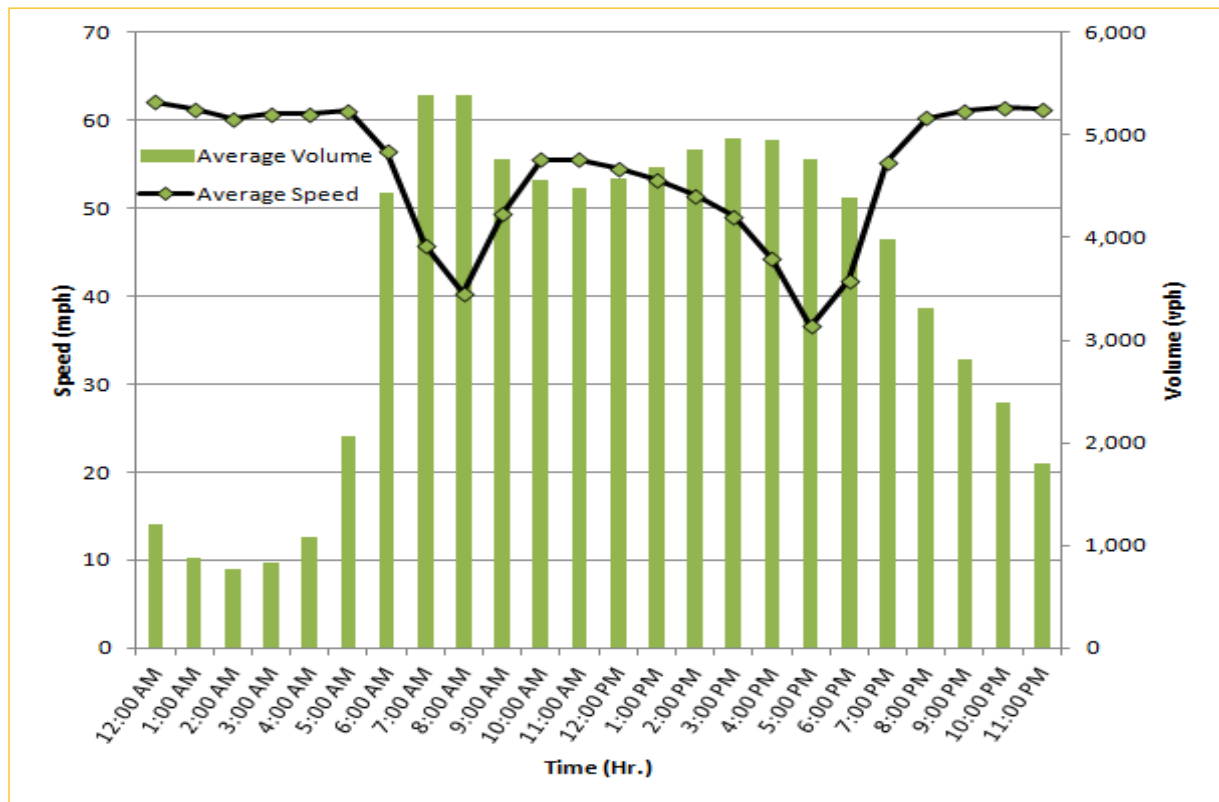


## Weekdays Speeds and Volumes by Time of Day\*

SR 826 Northbound/Eastbound : 15.6 Miles  
From: South of NW 25 Street  
To: East of NW 12 Avenue

SR 826 Southbound/Westbound: 15.6 Miles  
From: East of NW 12 Avenue  
To: South of NW 25 Street

\* Twelve-month average speeds and volumes from December 2012 - November 2013.