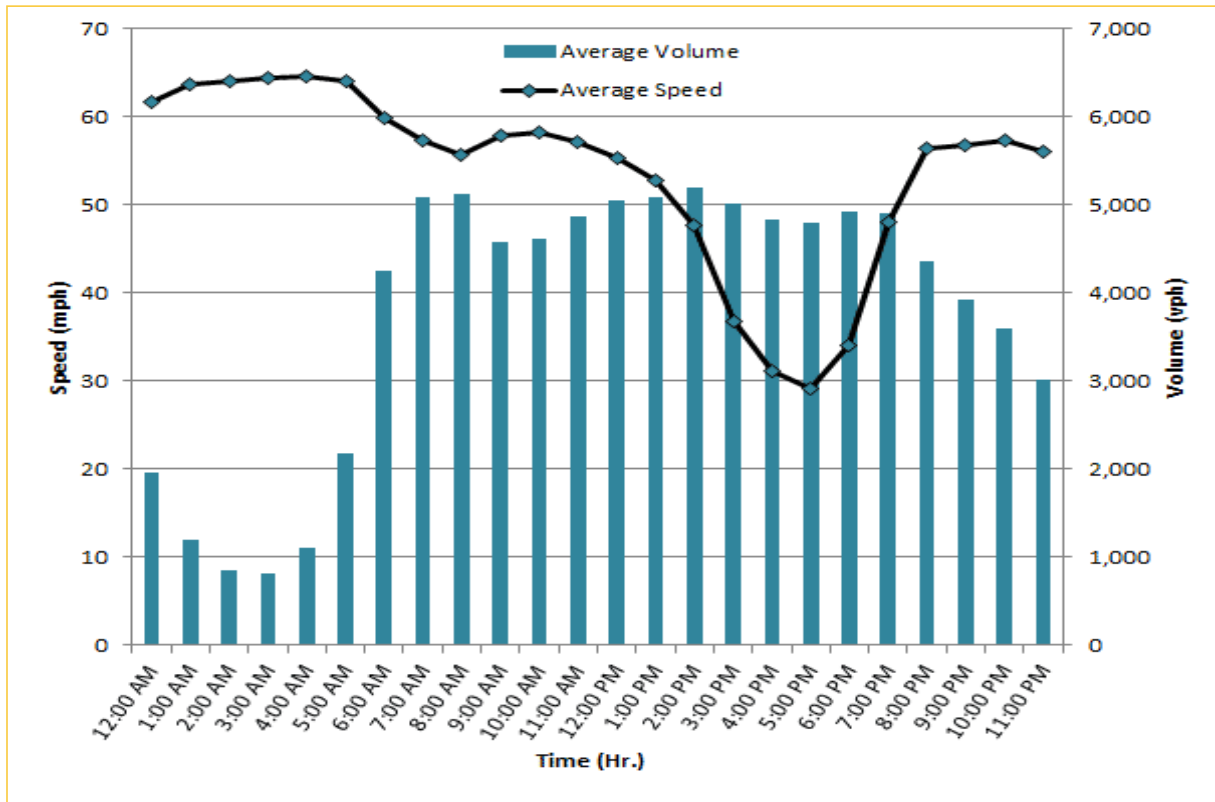


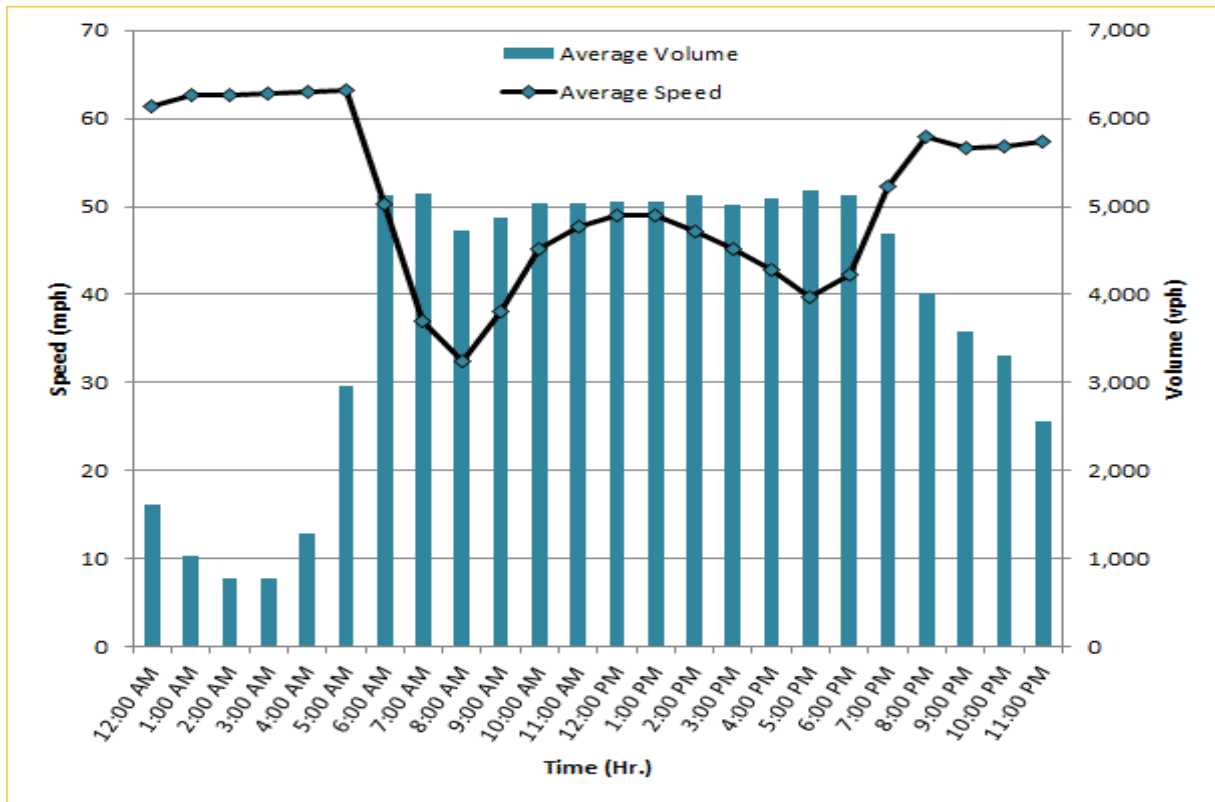
## TRAVEL TIME RELIABILITY REPORT

### Weekdays Speeds and Volumes by Time of Day\*

**I-95 Northbound: 17.3 Miles**  
 From: US-1  
 To: Miami-Dade / Broward County Line



**I-95 Southbound: 17.3 Miles**  
 From: Miami-Dade / Broward County Line  
 To: US-1



\* Twelve-month average from May 1<sup>st</sup>, 2018 to April 30<sup>th</sup>, 2019. Excludes express lanes.