

## TRAVEL TIME RELIABILITY REPORT

### Travel Time Index by Roadway\*

Time	I-95**		I-195**		I-75**		SR 826**					
	NB	SB	EB	WB	NB	SB	NB	EB	NE	SB	WB	SW
0:00	0.88	0.85	0.80	0.95	0.95	0.95	0.79	0.84	0.81	0.77	0.83	0.79
1:00	0.84	0.83	0.80	0.94	0.96	0.96	0.80	0.83	0.81	0.77	0.83	0.79
2:00	0.84	0.83	0.81	0.95	0.99	0.96	0.81	0.83	0.81	0.78	0.83	0.79
3:00	0.84	0.83	0.82	0.95	0.99	0.95	0.80	0.83	0.81	0.78	0.84	0.80
4:00	0.84	0.83	0.81	0.94	1.00	0.94	0.79	0.82	0.80	0.79	0.84	0.81
5:00	0.85	0.85	0.79	0.93	0.99	0.93	0.80	0.83	0.81	0.79	0.83	0.80
6:00	0.93	1.11	0.85	0.93	1.00	0.99	0.89	1.02	0.93	0.95	1.02	0.97
7:00	1.05	1.69	1.01	0.94	1.03	1.26	1.03	1.49	1.16	1.28	1.25	1.27
8:00	1.12	2.01	1.50	0.95	1.04	1.53	1.11	1.57	1.25	1.51	1.29	1.46
9:00	1.01	1.72	1.59	0.97	1.02	1.12	1.01	1.15	1.05	1.27	0.99	1.20
10:00	1.00	1.39	1.18	0.99	1.01	1.00	0.94	1.00	0.96	1.06	0.92	1.02
11:00	1.02	1.27	1.03	1.01	1.01	1.00	0.94	0.97	0.95	1.03	0.93	1.00
12:00	1.09	1.27	0.97	1.02	1.01	1.00	0.96	0.99	0.97	1.03	0.95	1.01
13:00	1.14	1.30	0.97	1.02	1.01	1.00	0.97	1.00	0.98	1.05	0.98	1.03
14:00	1.32	1.40	1.11	1.08	1.03	1.03	1.03	1.02	1.03	1.10	1.02	1.08
15:00	1.81	1.35	1.17	1.39	1.05	1.06	1.23	1.07	1.18	1.24	1.12	1.21
16:00	2.17	1.38	1.00	1.78	1.10	1.07	1.49	1.15	1.39	1.40	1.18	1.34
17:00	2.26	1.45	0.98	1.75	1.50	1.09	1.68	1.23	1.54	1.54	1.27	1.47
18:00	1.81	1.39	0.97	1.37	1.39	1.03	1.33	1.14	1.27	1.29	1.12	1.25
19:00	1.20	1.16	0.94	1.08	1.02	0.98	0.96	0.95	0.96	0.93	0.93	0.93
20:00	1.01	0.98	0.89	1.02	0.99	0.97	0.88	0.89	0.89	0.85	0.88	0.86
21:00	0.95	0.95	0.85	1.00	0.98	0.97	0.84	0.86	0.85	0.82	0.87	0.83
22:00	0.99	0.97	0.85	0.99	0.96	0.97	0.83	0.86	0.84	0.80	0.87	0.82
23:00	0.99	0.92	0.83	1.02	0.95	0.95	0.81	0.86	0.82	0.79	0.86	0.81
FFS***	66 mph	66 mph	62 mph	59 mph	73 mph	70 mph	66 mph	66 mph	66 mph	68 mph	66 mph	67 mph

Maximum Travel Time Index.

**Travel Time Index (TTI)** is a measure of average conditions that indicates how much longer, **on average**, travel times are during congestion compared to during light traffic.

**Real World Example:** A TTI of 1.60 means that for a trip that usually takes 10 minutes in light traffic, a traveler should budget for an additional 6 minutes **on average**.



\* Twelve-month weekday average from August 1st, 2021 to July 31st, 2022.

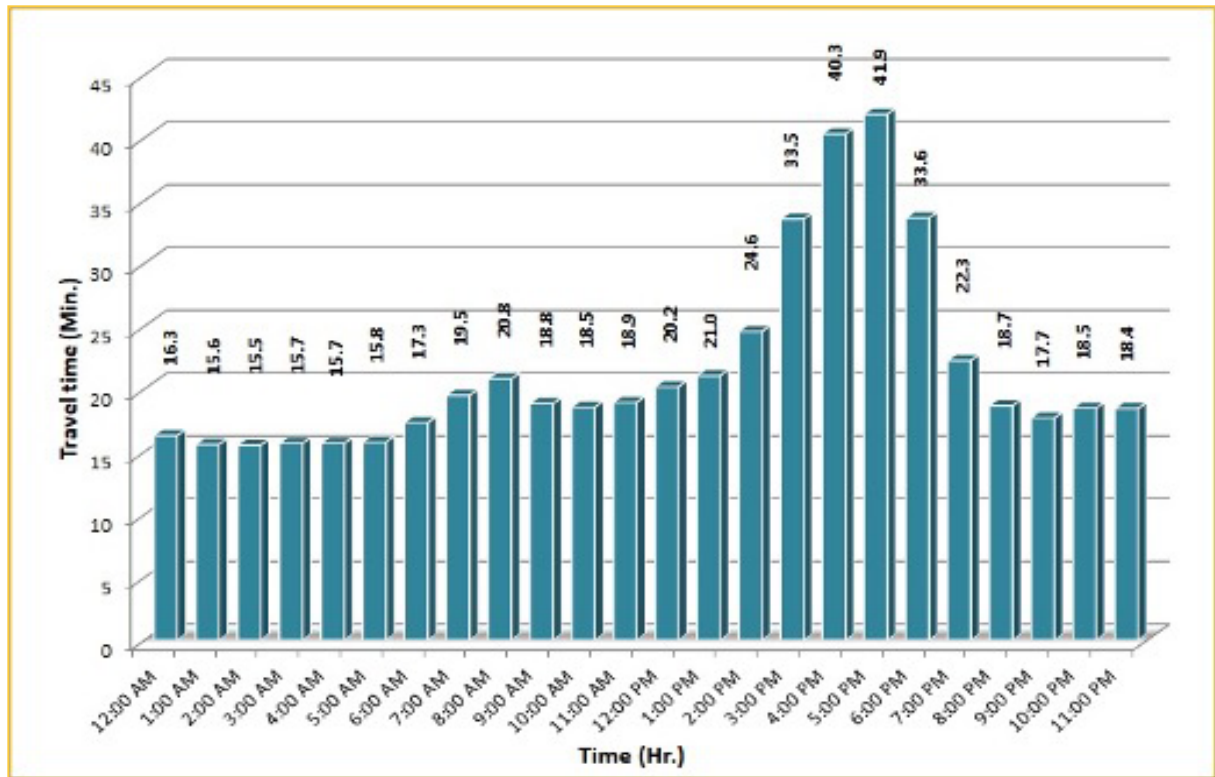
\*\* Data obtained from Regional Integrated Transportation System (RITIS), Probe Data Analytics Suite.

\*\*\* Free Flow Speed.

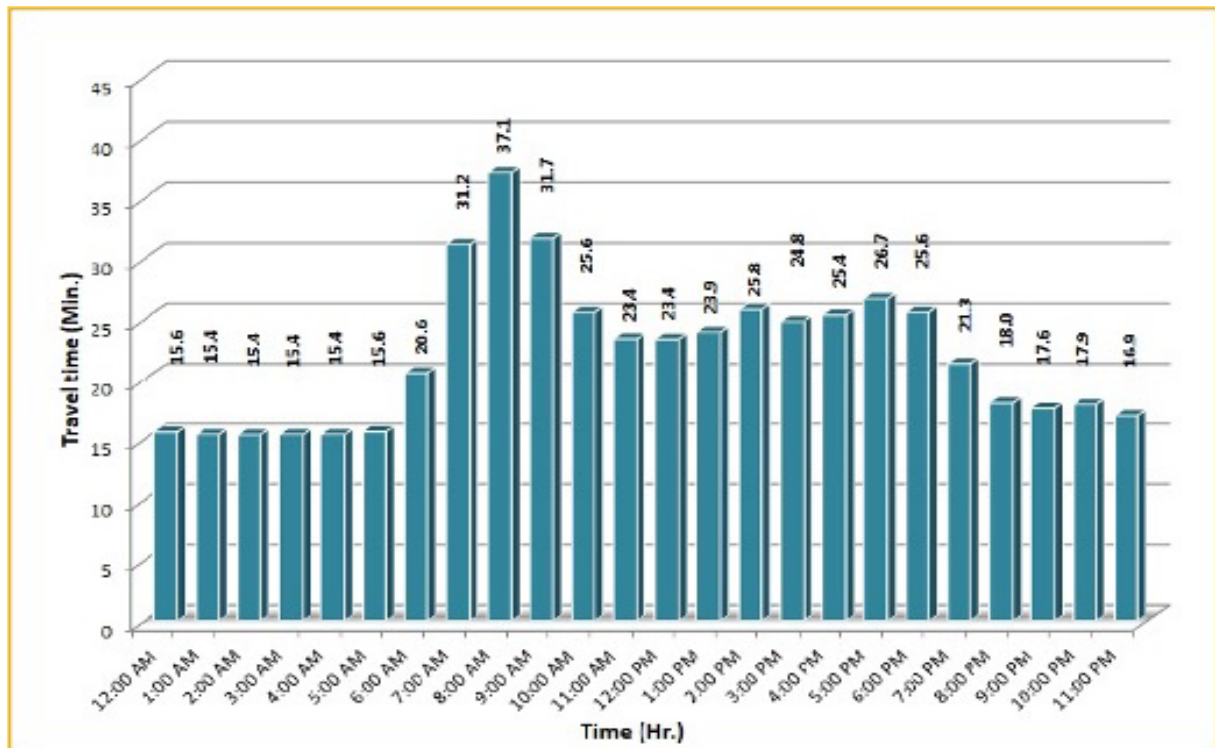
## TRAVEL TIME RELIABILITY REPORT

### Weekdays Travel Times by Time of Day\*

**I-95 Northbound: 17.3 Miles\*\***  
From: US-1  
To: Miami-Dade / Broward County Line



**I-95 Southbound: 17.3 Miles\*\***  
From: Miami-Dade / Broward County Line  
To: US-1



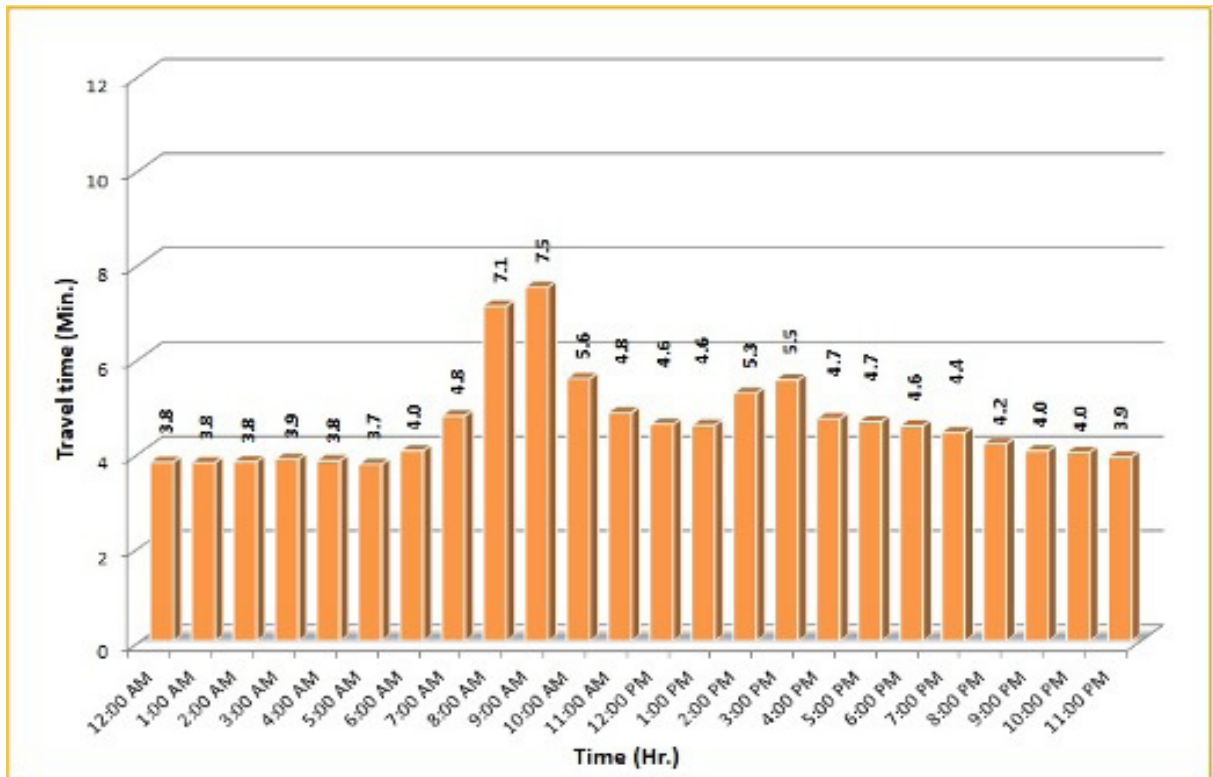
\* Twelve-month weekday average from August 1st, 2021 to July 31st, 2022.

\*\* Data obtained from Regional Integrated Transportation System (RITIS), Probe Data Analytics Suite. Excludes express lanes.

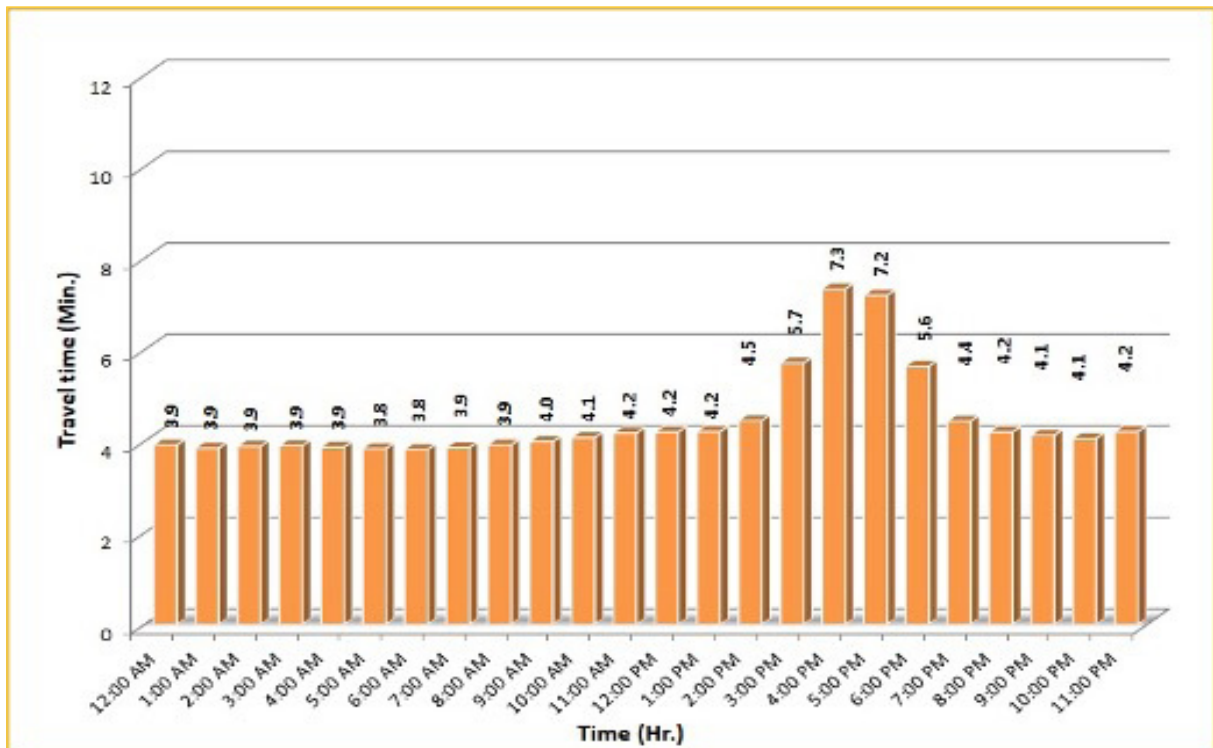
## TRAVEL TIME RELIABILITY REPORT

### Weekdays Travel Times by Time of Day\*

**I-195 Eastbound: 4.9 Miles\*\***  
From: West of North Miami Avenue  
To: West of Alton Road



**I-195 Westbound: 4.9 Miles\*\***  
From: West of Alton Road  
To: West of North Miami Avenue



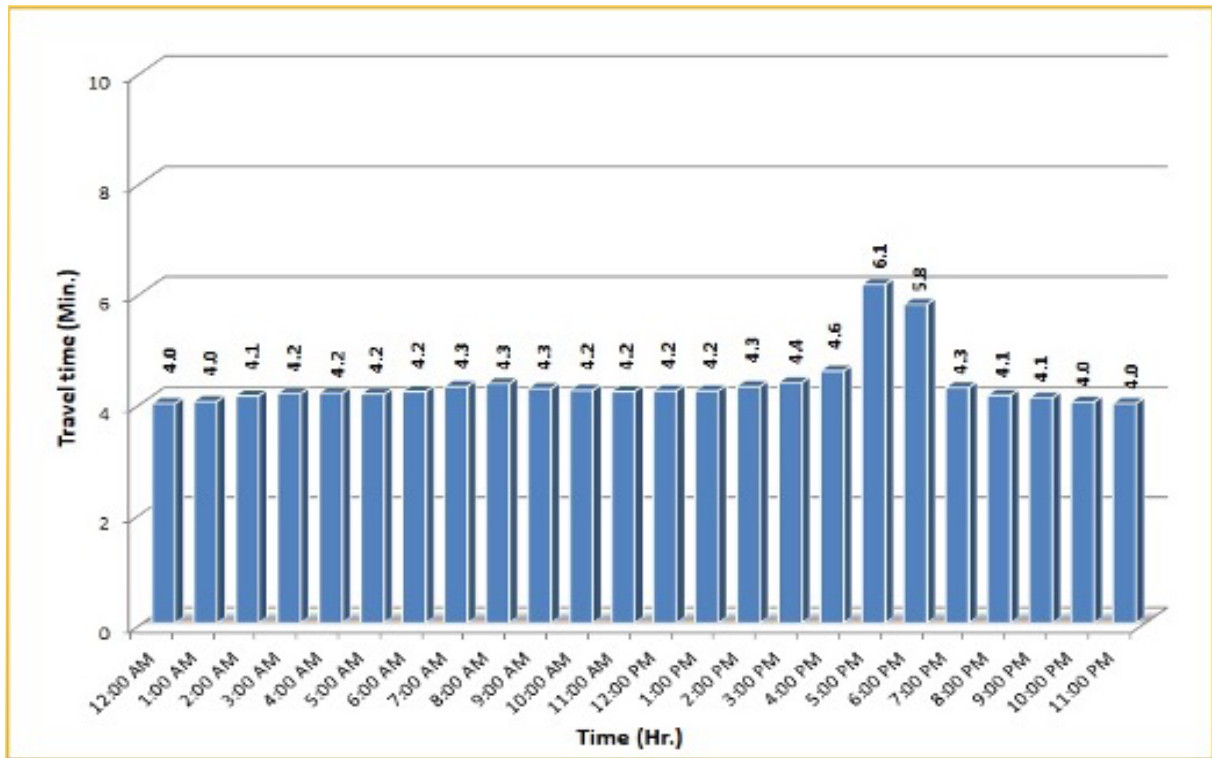
\* Twelve-month weekday average from August 1st, 2021 to July 31st, 2022.

\*\* Data obtained from Regional Integrated Transportation System (RITIS), Probe Data Analytics Suite. Excludes express lanes.

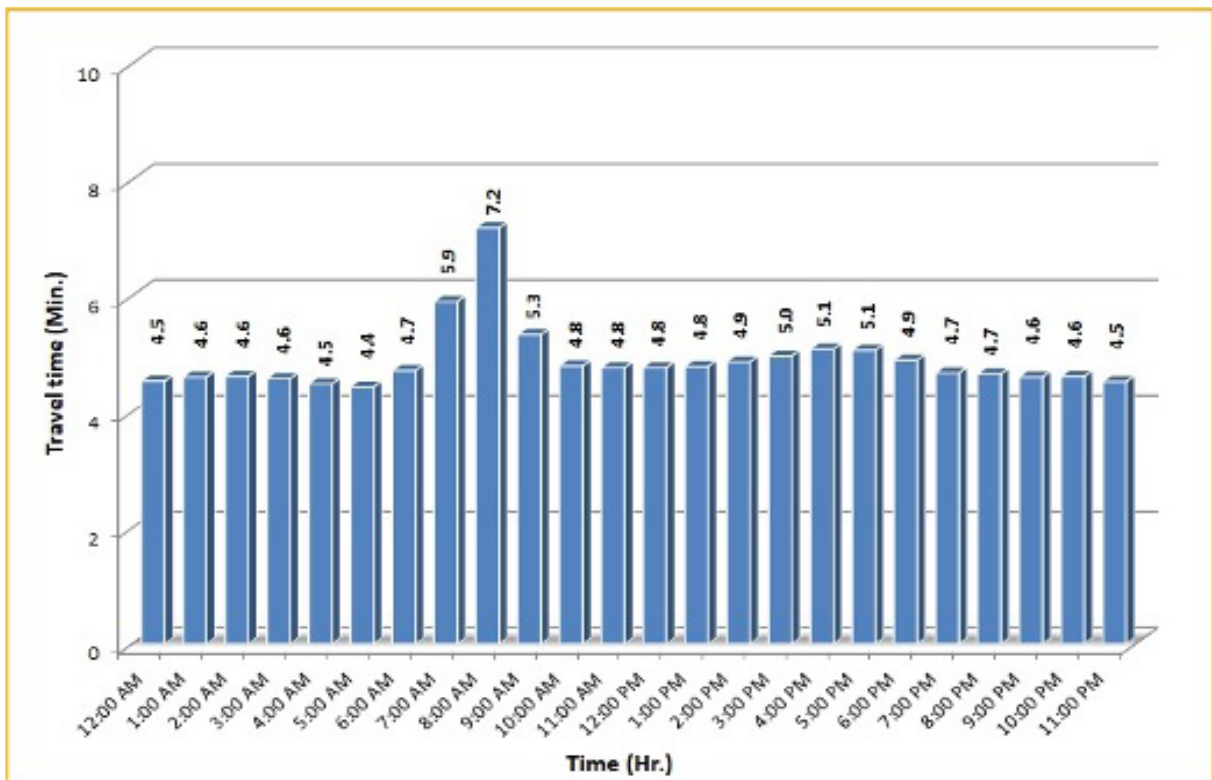
## TRAVEL TIME RELIABILITY REPORT

### Weekdays Travel Times by Time of Day\*

**I-75 Northbound: 5.4 Miles\*\***  
From: West of SR 826  
To: North of Florida's Turnpike



**I-75 Southbound: 5.4 Miles\*\***  
From: North of Florida's Turnpike  
To: West of SR 826



\* Twelve-month weekday average from August 1st, 2021 to July 31st, 2022.

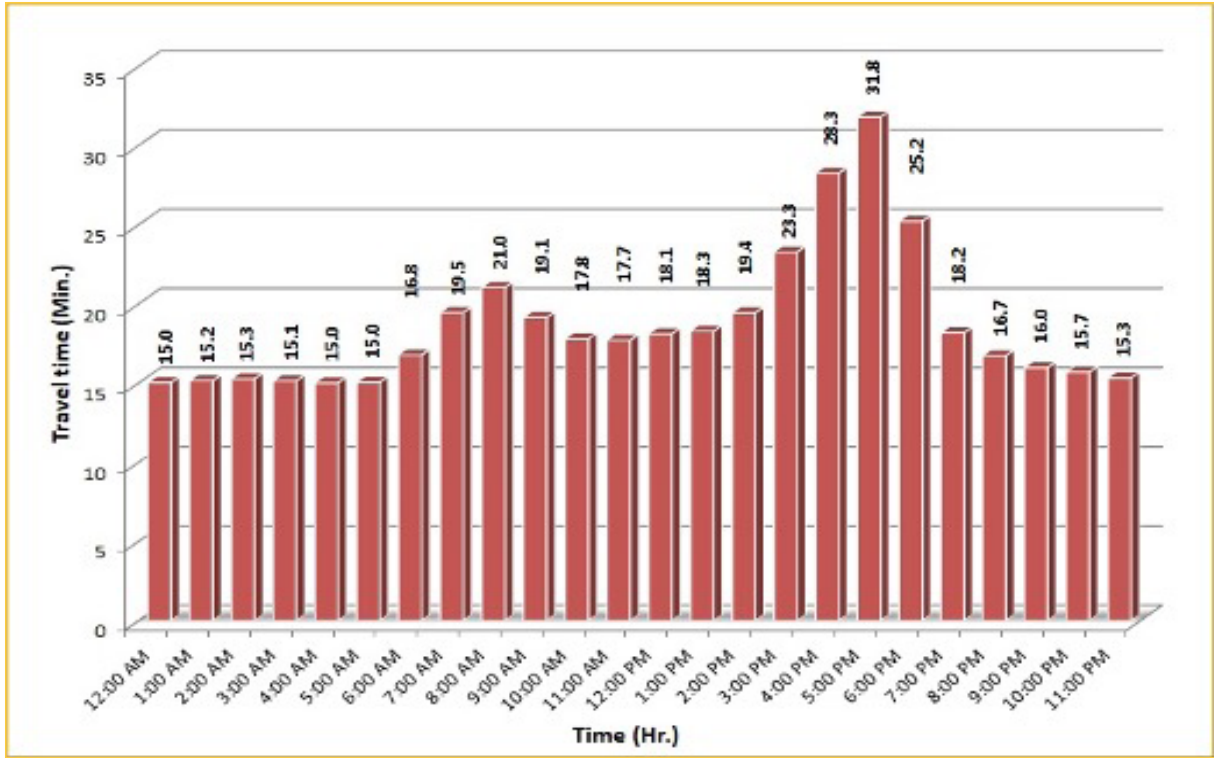
\*\* Data obtained from Regional Integrated Transportation System (RITIS), Probe Data Analytics Suite. Excludes express lanes.




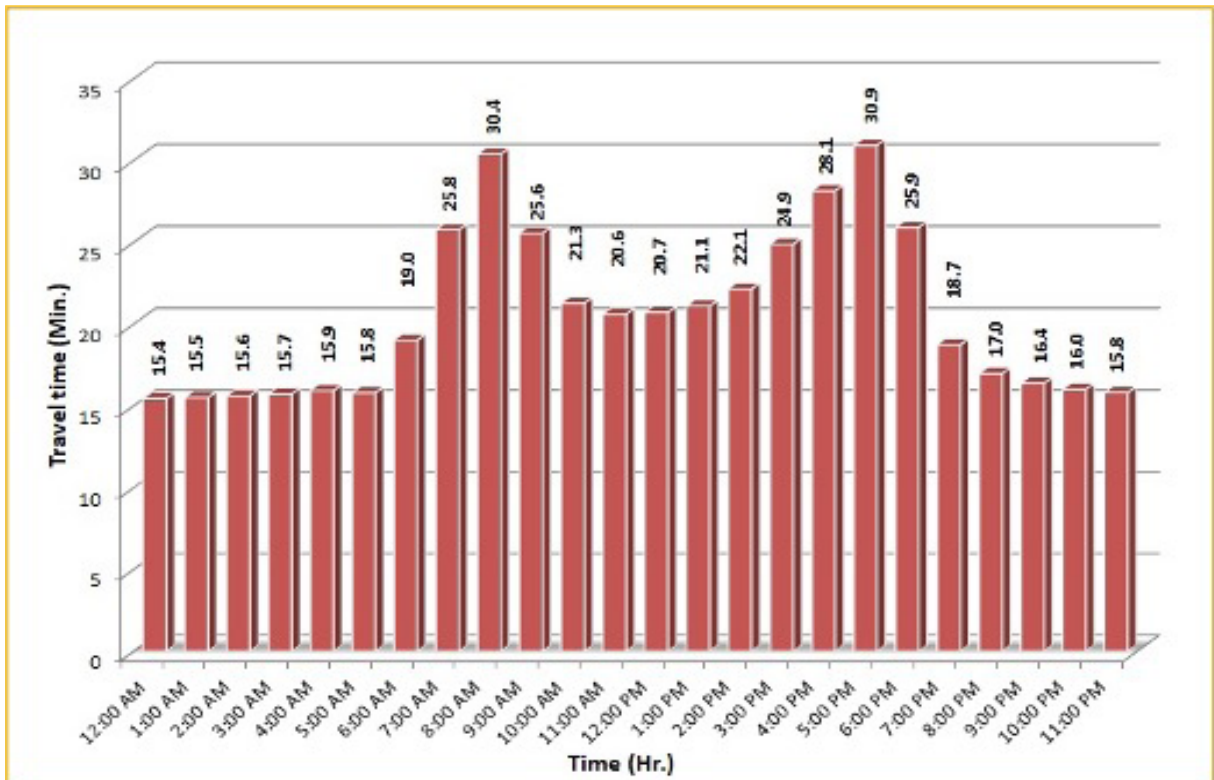
## TRAVEL TIME RELIABILITY REPORT

### Weekdays Travel Times by Time of Day\*

**SR 826 Northbound: 16.6 Miles\*\***  
From: US-1  
To: North of NW 154 Street

**SR 826 Southbound: 16.6 Miles\*\***  
From: North of NW 154 Street  
To: US-1

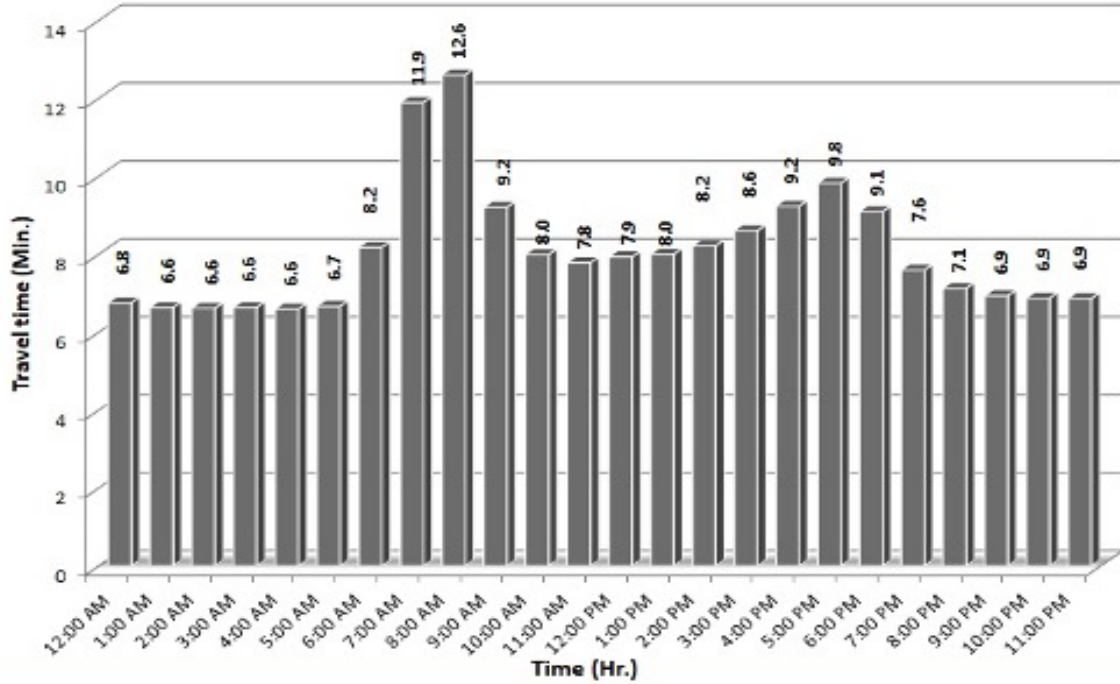
\* Twelve-month weekday average from August 1st, 2021 to July 31st, 2022.

\*\* Data obtained from Regional Integrated Transportation System (RITIS), Probe Data Analytics Suite. Excludes express lanes.

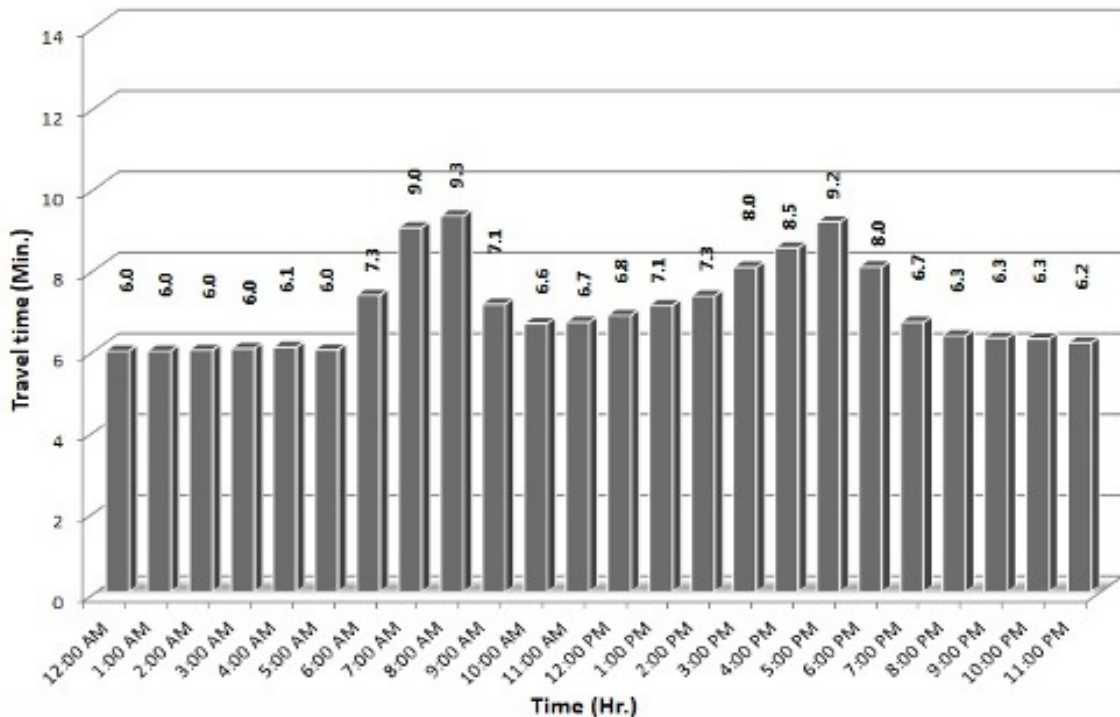
## TRAVEL TIME RELIABILITY REPORT

### Weekdays Travel Times by Time of Day\*

**SR 826 Eastbound: 7.1 Miles\*\***  
From: West of NW 67 Avenue  
To: I-95

**SR 826 Westbound: 7.1 Miles\*\***  
From: I-95  
To: West of NW 67 Avenue

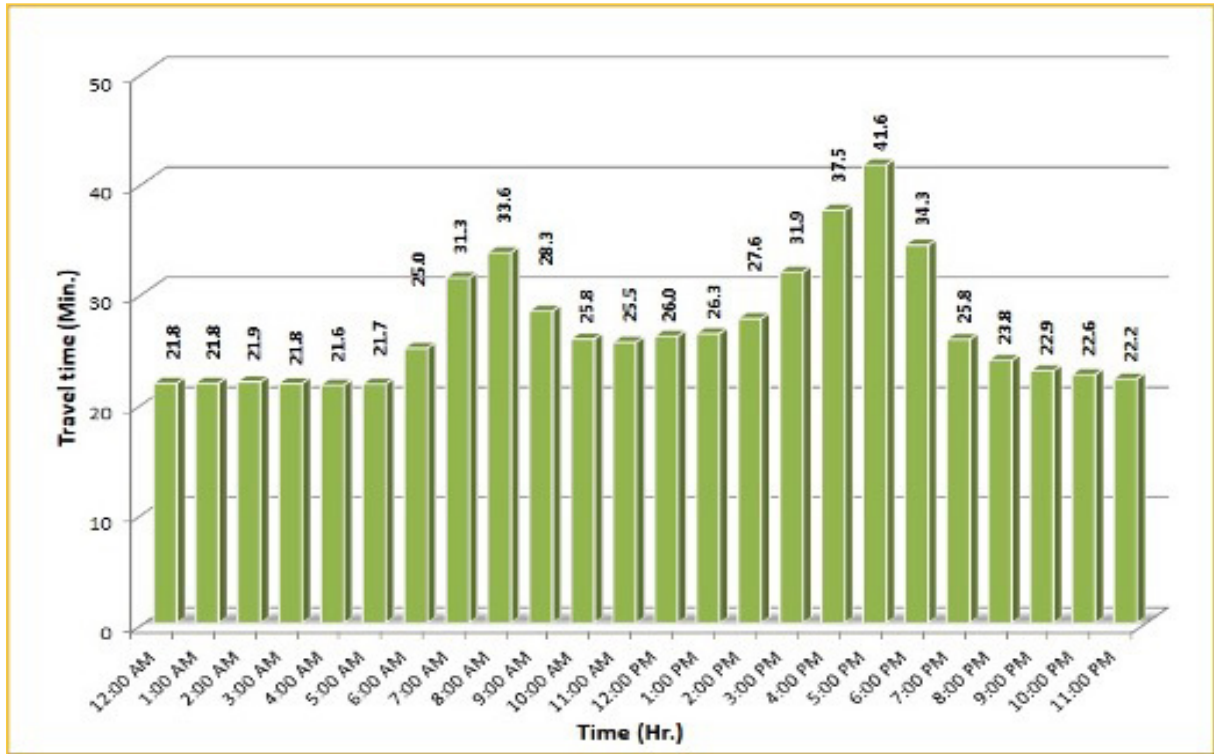
\* Twelve-month weekday average from August 1st, 2021 to July 31st, 2022.

\*\* Data obtained from Regional Integrated Transportation System (RITIS), Probe Data Analytics Suite. Excludes express lanes.

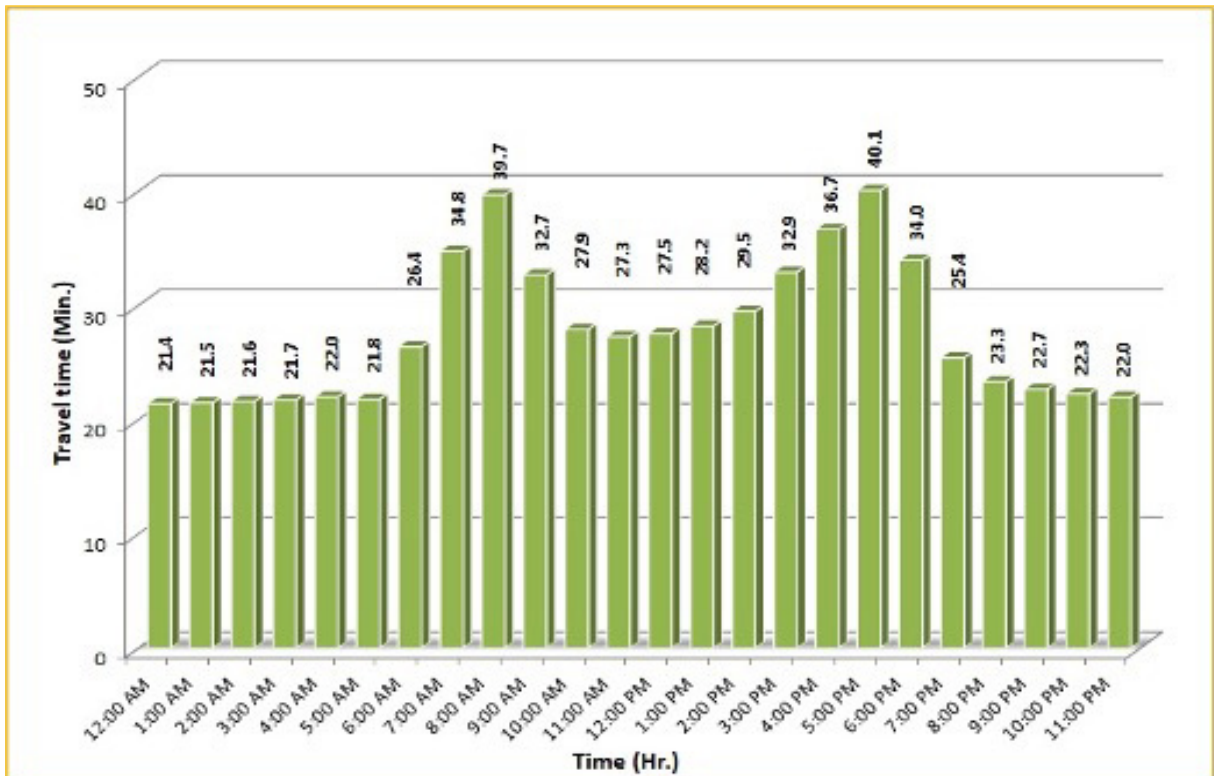
## TRAVEL TIME RELIABILITY REPORT

### Weekdays Travel Times by Time of Day\*

SR 826 Northbound/Eastbound : 24.2 Miles\*\*  
From: US-1  
To: I-95



SR 826 Southbound/Westbound: 24.2 Miles\*\*  
From: I-95  
To: US-1



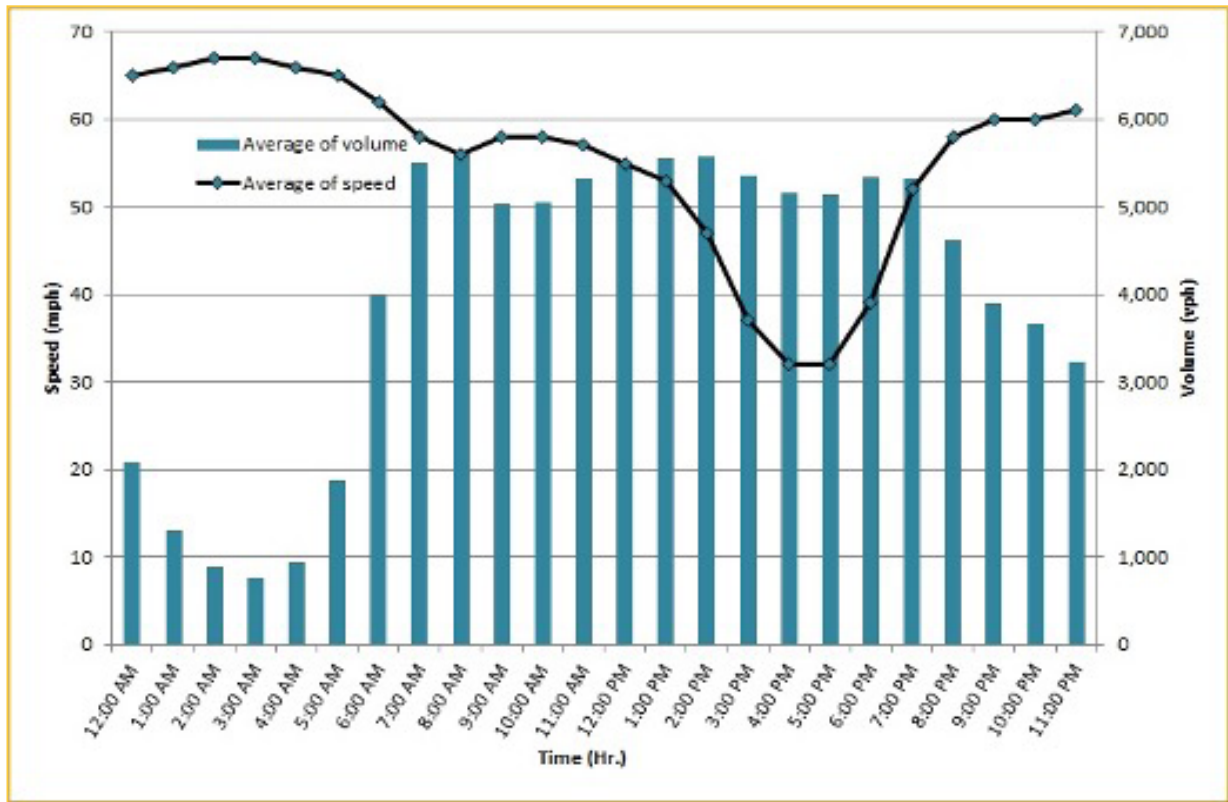
\* Twelve-month weekday average from August 1st, 2021 to July 31st, 2022.

\*\* Data obtained from Regional Integrated Transportation System (RITIS), Probe Data Analytics Suite. Excludes express lanes.

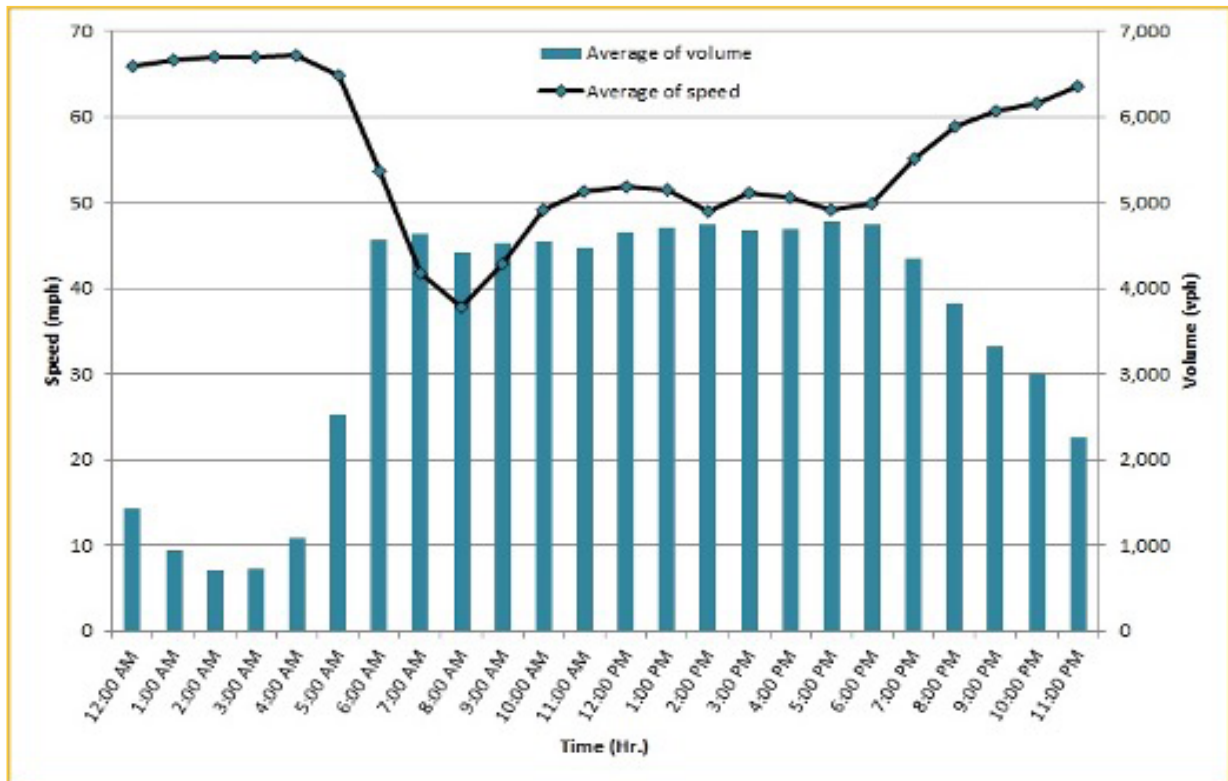
## TRAVEL TIME RELIABILITY REPORT

### Weekdays Speeds and Volumes by Time of Day\*

**I-95 Northbound: 17.3 Miles\*\***  
From: US-1  
To: Miami-Dade / Broward County Line



**I-95 Southbound: 17.3 Miles\*\***  
From: Miami-Dade / Broward County Line  
To: US-1



\* Twelve-month weekday average from August 1st, 2021 to July 31st, 2022.

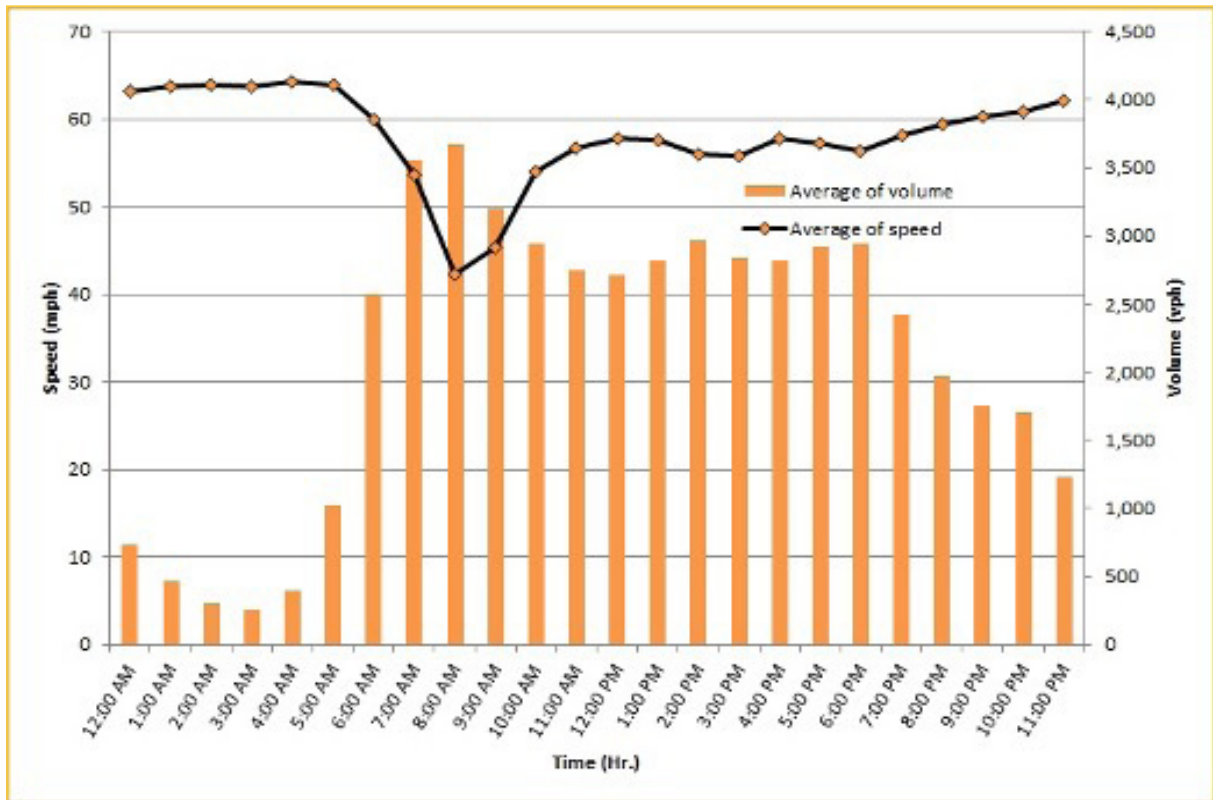
\*\* Data obtained from Regional Integrated Transportation System (RITIS), Probe Data Analytics Suite. Excludes express lanes.



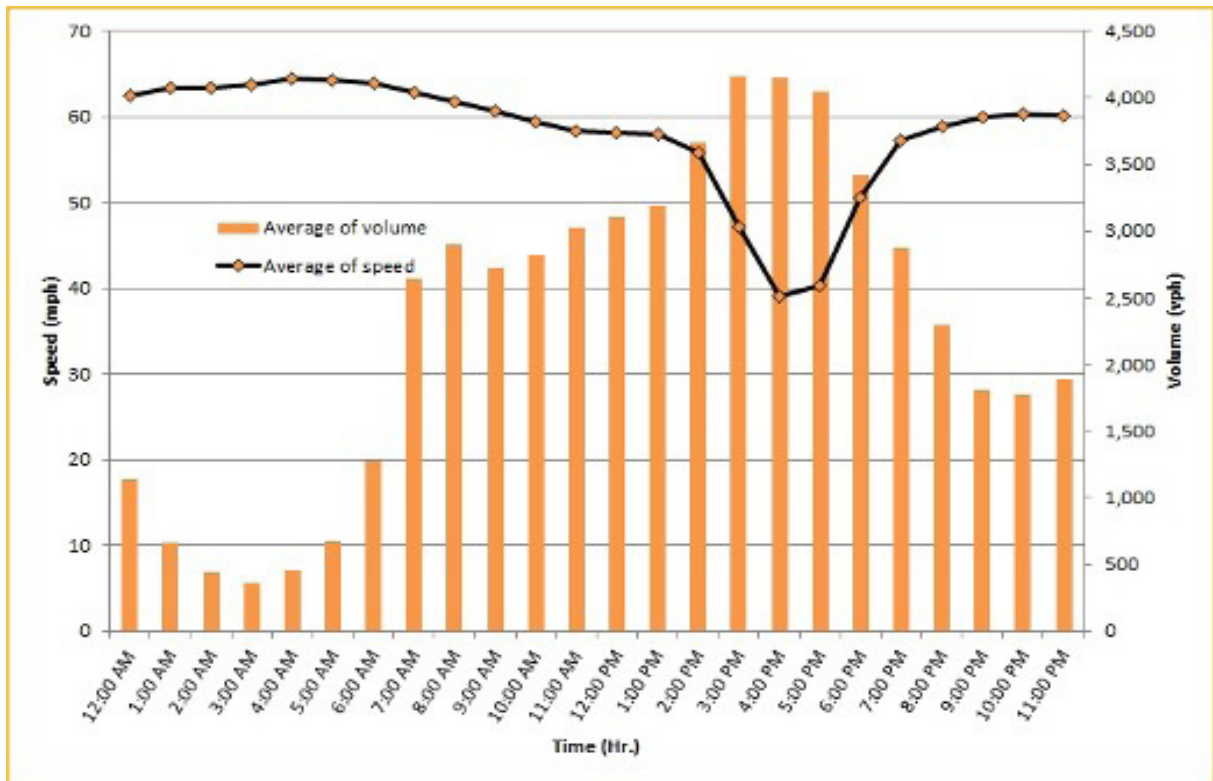
## TRAVEL TIME RELIABILITY REPORT

### Weekdays Speeds and Volumes by Time of Day\*

**I-195 Eastbound: 4.9 Miles\*\***  
From: West of North Miami Avenue  
To: West of Alton Road



**I-195 Westbound: 4.9 Miles\*\***  
From: West of Alton Road  
To: West of North Miami Avenue



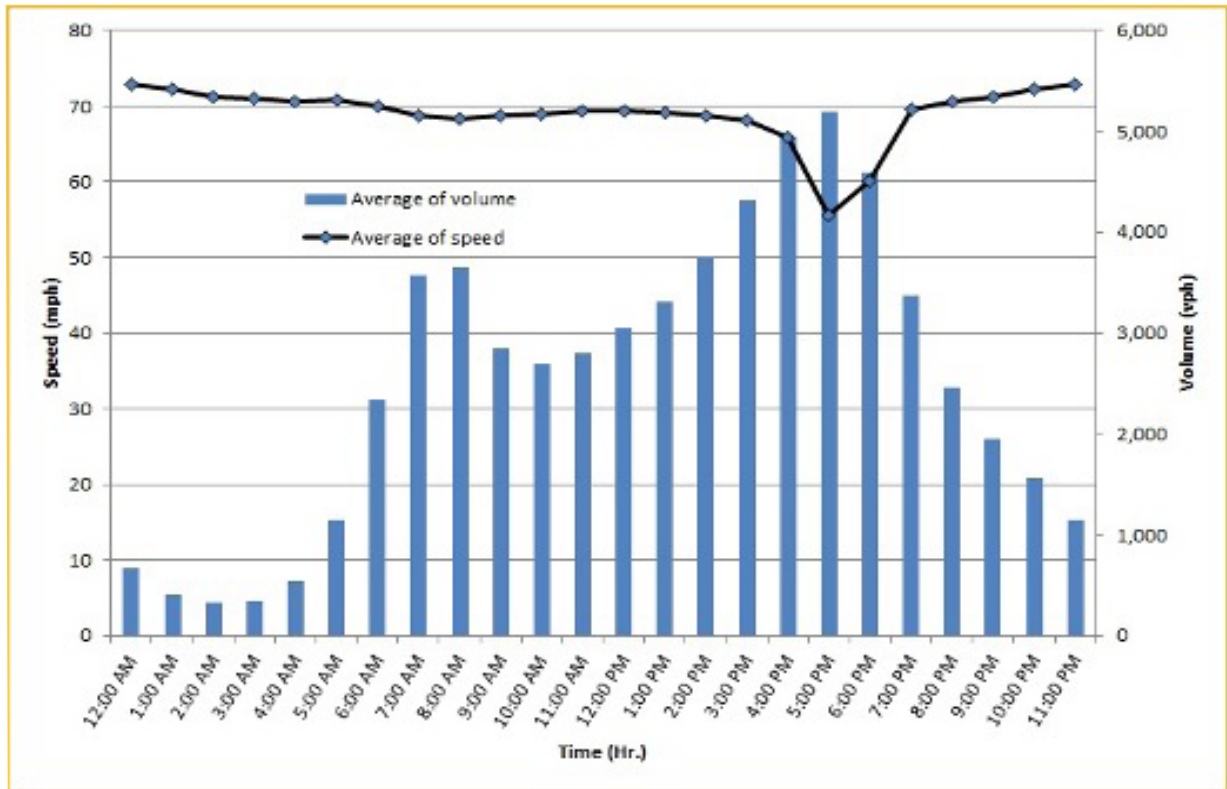
\* Twelve-month weekday average from August 1st, 2021 to July 31st, 2022.

\*\* Data obtained from Regional Integrated Transportation System (RITIS), Probe Data Analytics Suite. Excludes express lanes.

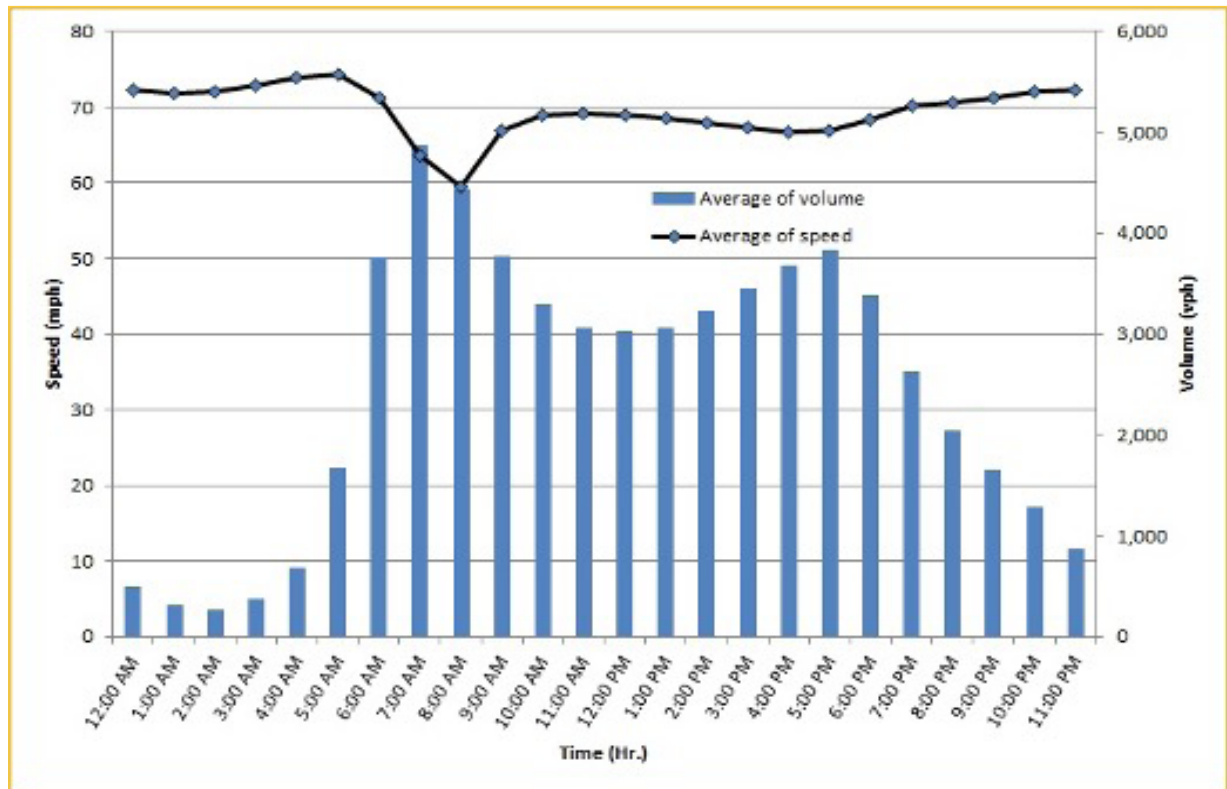
## TRAVEL TIME RELIABILITY REPORT

### Weekdays Speeds and Volumes by Time of Day\*

**I-75 Northbound: 5.4 Miles \*\***  
From: West of SR 826  
To: North of Florida's Turnpike



**I-75 Southbound: 5.4 Miles \*\***  
From: North of Florida's Turnpike  
To: West of SR 826



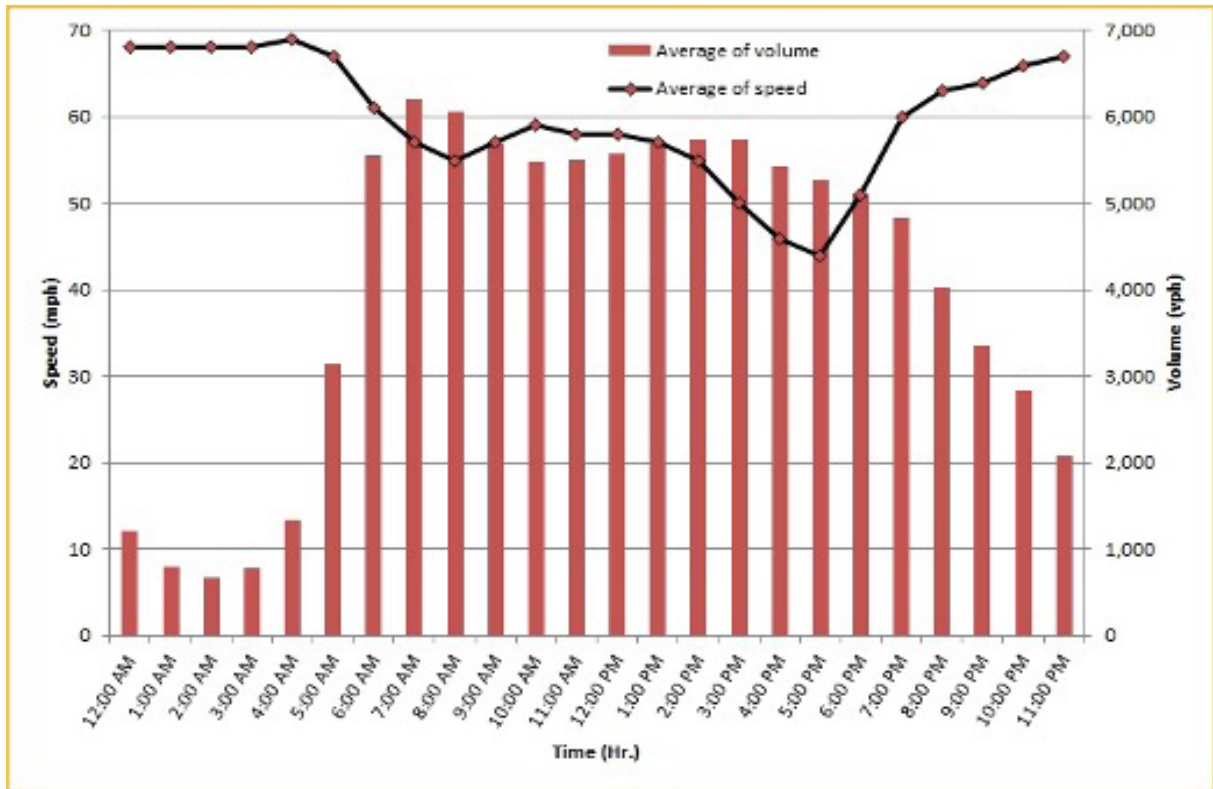
\* Twelve-month weekday average from August 1st, 2021 to July 31st, 2022.

\*\* Data obtained from Regional Integrated Transportation System (RITIS), Probe Data Analytics Suite. Excludes express lanes.

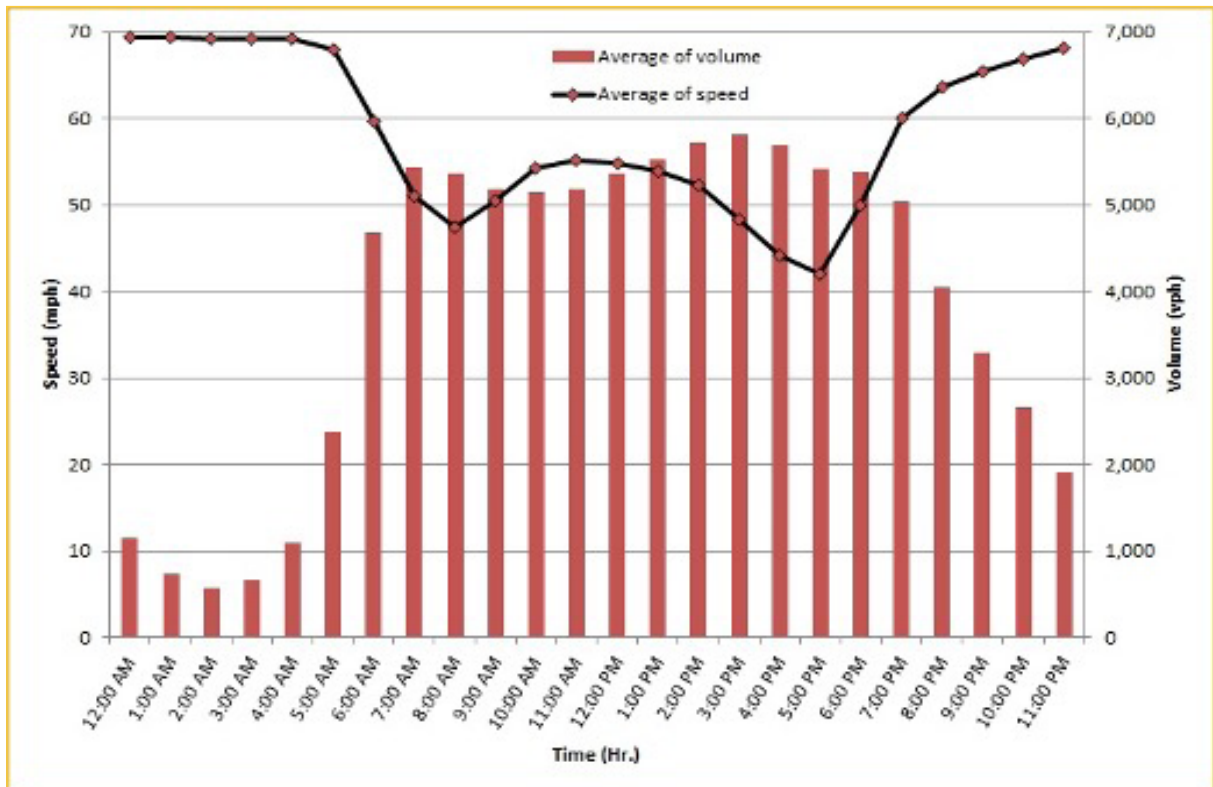
## TRAVEL TIME RELIABILITY REPORT

### Weekdays Speeds and Volumes by Time of Day\*

SR 826 Northbound: 16.6 Miles\*\*  
From: US-1  
To: North of NW 154 Street

SR 826 Southbound: 16.6 Miles\*\*  
From: North of NW 154 Street  
To: US-1

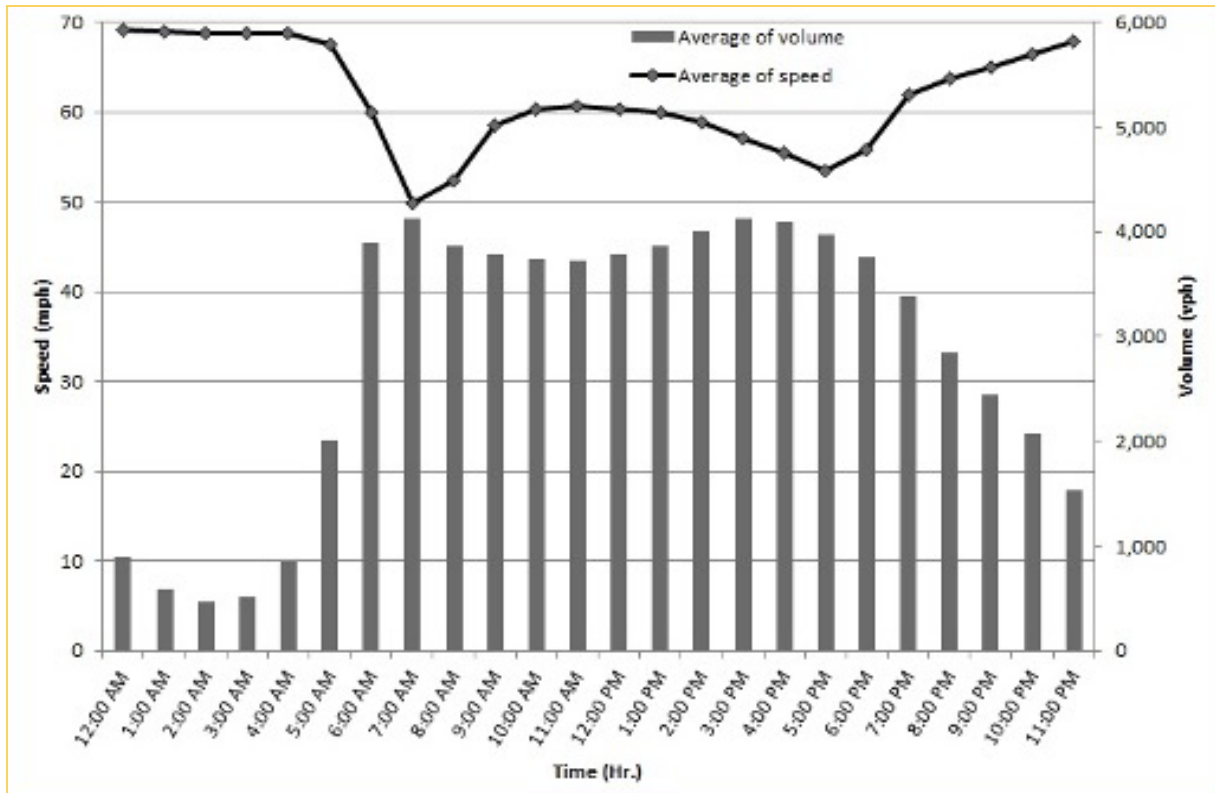
\* Twelve-month weekday average from August 1st, 2021 to July 31st, 2022.

\*\* Data obtained from Regional Integrated Transportation System (RITIS), Probe Data Analytics Suite. Excludes express lanes.

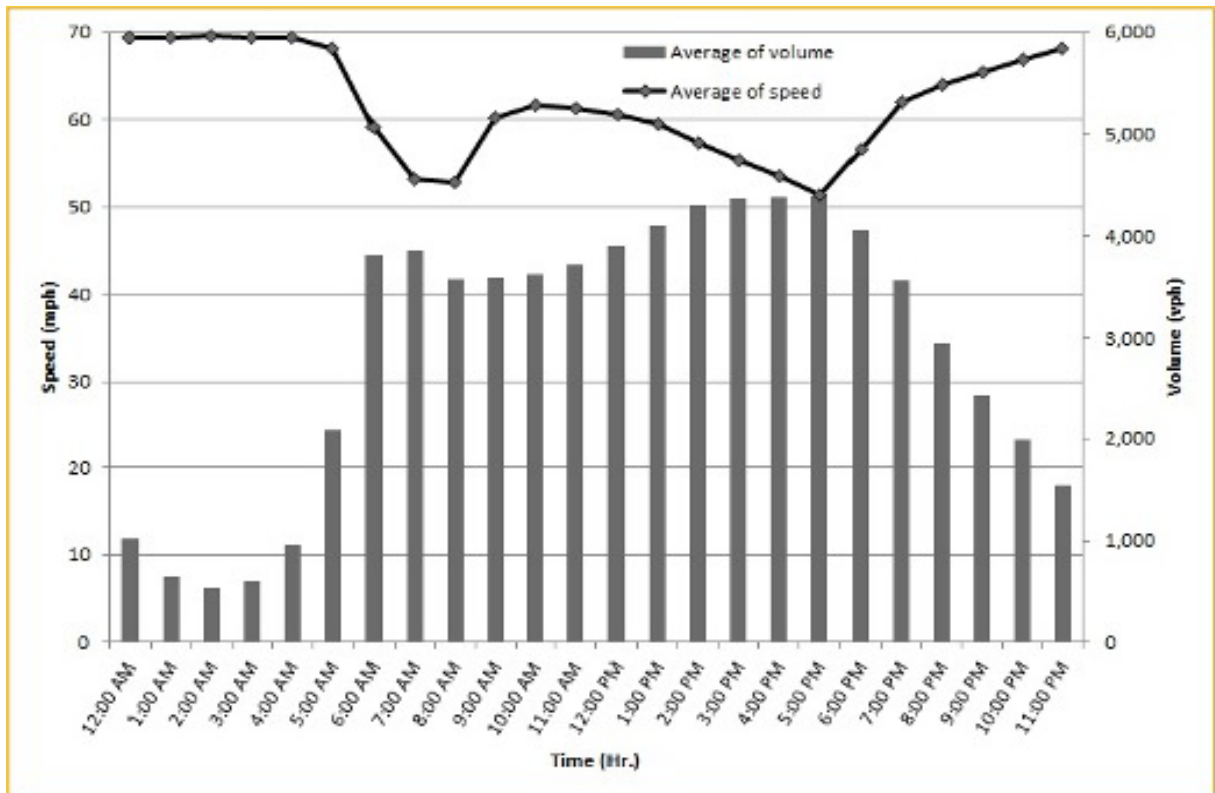
## TRAVEL TIME RELIABILITY REPORT

### Weekdays Speeds and Volumes by Time of Day\*

SR 826 Eastbound: 7.1 Miles\*\*  
From: West of NW 67 Avenue  
To: I-95

SR 826 Westbound: 7.1 Miles \*\*  
From: I-95  
To: West of NW 67 Avenue

\* Twelve-month weekday average from August 1st, 2021 to July 31st, 2022.

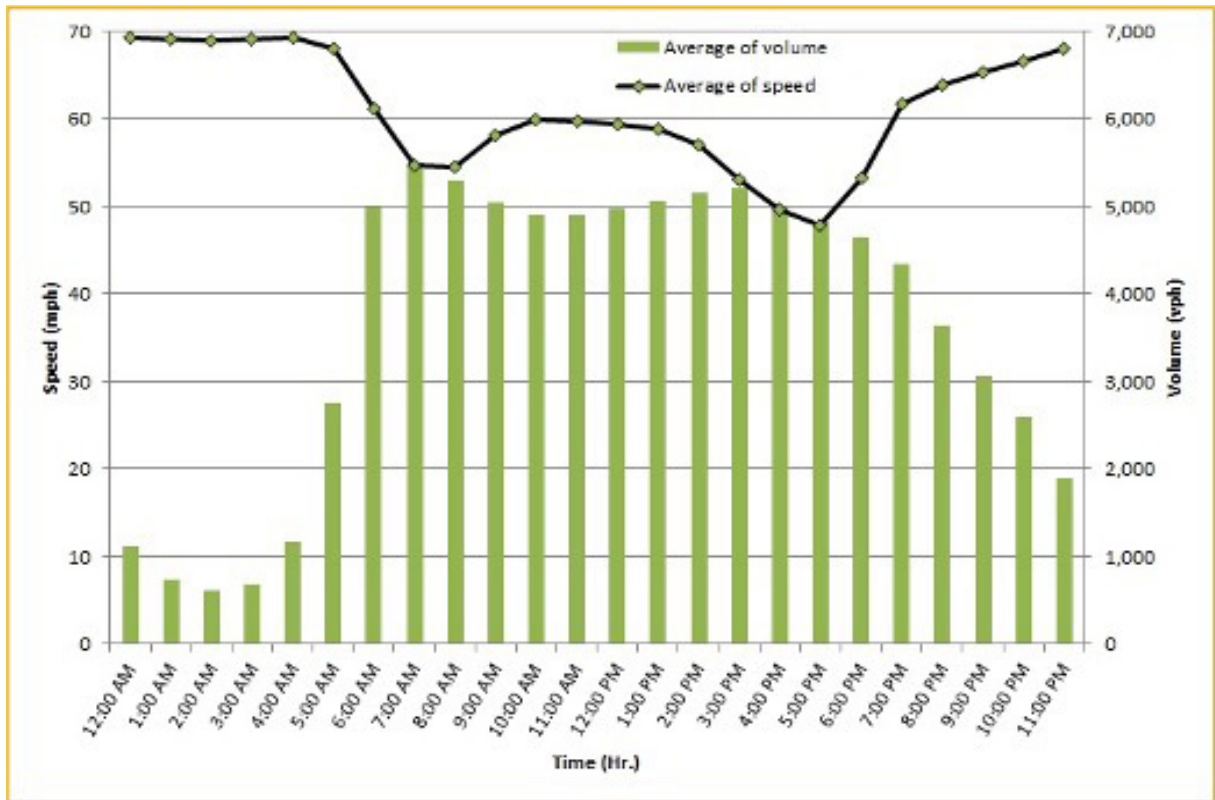
\*\* Data obtained from Regional Integrated Transportation System (RITIS), Probe Data Analytics Suite. Excludes express lanes.



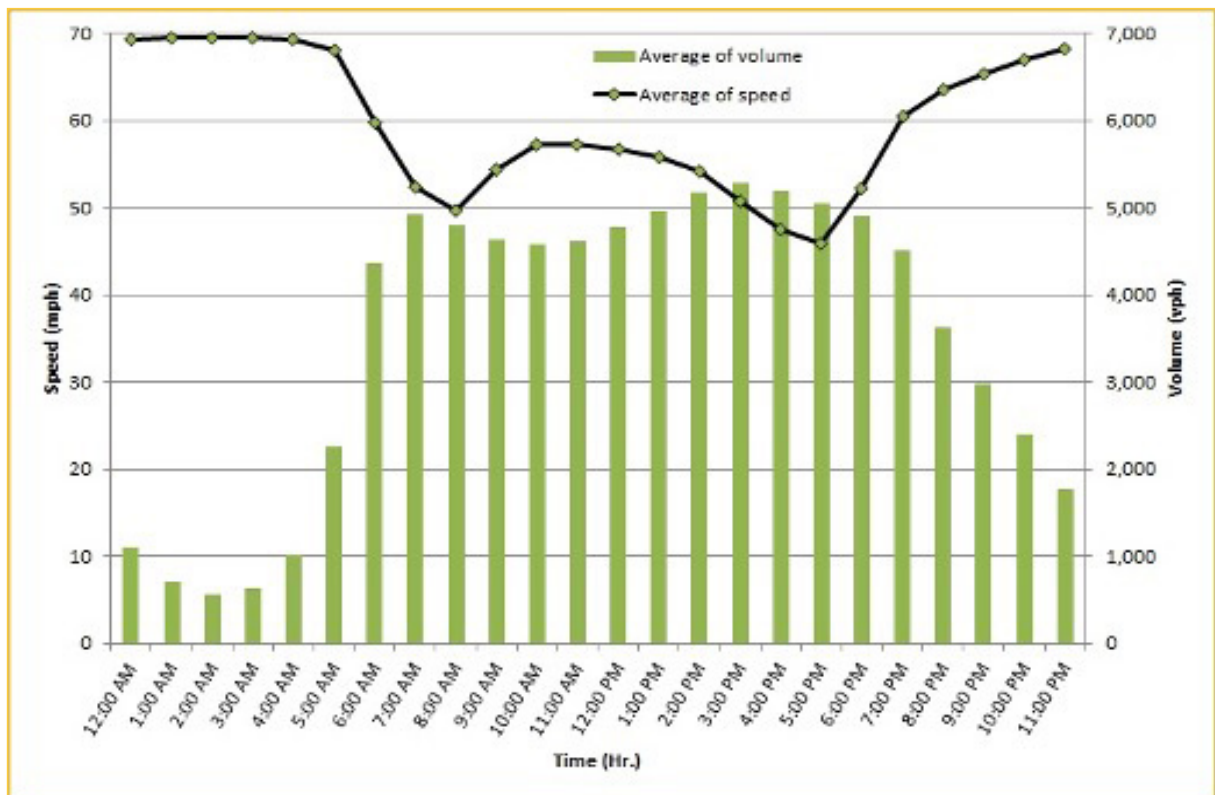
## TRAVEL TIME RELIABILITY REPORT

### Weekdays Speeds and Volumes by Time of Day\*

SR 826 Northbound/Eastbound : 24.2 Miles\*\*  
From: US-1  
To: I-95



SR 826 Southbound/Westbound: 24.2 Miles\*\*  
From: I-95  
To: US-1



\* Twelve-month weekday average from August 1st, 2021 to July 31st, 2022.

\*\* Data obtained from Regional Integrated Transportation System (RITIS), Probe Data Analytics Suite. Excludes express lanes.