

## TRAVEL TIME RELIABILITY REPORT

### Travel Time Index by Roadway\*

Time	I-95**		I-195**		I-75**		SR 826**					
	NB	SB	EB	WB	NB	SB	NB	EB	NE	SB	WB	SW
0:00	0.87	0.85	0.81	0.95	0.97	0.98	0.83	0.84	0.84	0.79	0.84	0.81
1:00	0.85	0.84	0.82	0.97	0.98	1.00	0.86	0.85	0.86	0.82	0.86	0.83
2:00	0.85	0.86	0.84	1.00	1.00	1.02	0.87	0.85	0.86	0.84	0.86	0.84
3:00	0.87	0.85	0.86	1.03	1.02	1.02	0.88	0.86	0.88	0.84	0.87	0.85
4:00	0.87	0.86	0.85	1.03	1.02	1.00	0.86	0.86	0.86	0.85	0.86	0.85
5:00	0.86	0.86	0.81	0.99	1.02	0.95	0.83	0.85	0.84	0.85	0.87	0.85
6:00	0.91	1.01	0.84	0.94	1.02	0.96	0.87	0.94	0.90	0.92	0.90	0.91
7:00	0.97	1.20	0.92	0.92	1.04	0.98	0.94	1.18	1.01	1.08	1.02	1.06
8:00	0.99	1.37	1.17	0.94	1.04	1.03	0.97	1.30	1.07	1.21	1.08	1.18
9:00	0.95	1.24	1.13	0.95	1.02	1.02	0.93	1.06	0.97	1.08	0.93	1.04
10:00	0.94	1.14	0.90	0.96	1.02	1.00	0.91	0.95	0.92	1.00	0.94	0.99
11:00	0.97	1.12	0.88	0.98	1.01	1.00	0.93	0.95	0.93	1.00	0.93	0.98
12:00	1.00	1.11	0.90	0.98	1.00	1.00	0.92	0.95	0.93	1.02	0.93	0.99
13:00	1.06	1.15	0.91	0.99	1.00	1.00	0.93	0.96	0.94	1.03	0.95	1.01
14:00	1.14	1.22	1.01	1.01	1.01	1.01	0.97	1.00	0.98	1.07	0.99	1.04
15:00	1.43	1.27	1.10	1.11	1.01	1.02	1.09	1.01	1.07	1.15	1.06	1.12
16:00	1.75	1.34	0.97	1.36	1.03	1.02	1.25	1.08	1.20	1.31	1.20	1.28
17:00	1.75	1.38	0.94	1.38	1.10	1.02	1.30	1.13	1.25	1.40	1.26	1.36
18:00	1.37	1.28	0.93	1.09	1.05	0.99	1.05	1.06	1.05	1.13	1.13	1.13
19:00	1.01	1.06	0.85	0.98	0.98	0.97	0.87	0.90	0.88	0.89	0.90	0.89
20:00	0.96	0.98	0.84	0.97	0.97	0.96	0.84	0.87	0.85	0.83	0.88	0.84
21:00	0.96	0.99	0.82	0.96	0.97	0.95	0.83	0.85	0.83	0.80	0.86	0.82
22:00	0.97	0.97	0.86	0.95	0.95	0.95	0.84	0.84	0.84	0.79	0.85	0.80
23:00	0.95	0.91	0.84	0.95	0.96	0.96	0.83	0.84	0.83	0.79	0.84	0.80
FFS***	65 mph	65 mph	61 mph	57 mph	71 mph	67 mph	62 mph	65 mph	63 mph	64 mph	64 mph	64 mph

*Maximum Travel Time Index.*

**Travel Time Index (TTI)** is a measure of average conditions that indicates how much longer, **on average**, travel times are during congestion compared to during light traffic.

**Real World Example:** A TTI of 1.60 means that for a trip that usually takes 10 minutes in light traffic, a traveler should budget for an additional 6 minutes **on average**.



\* Twelve-month weekday average from July 1st, 2020 to June 30th, 2021.

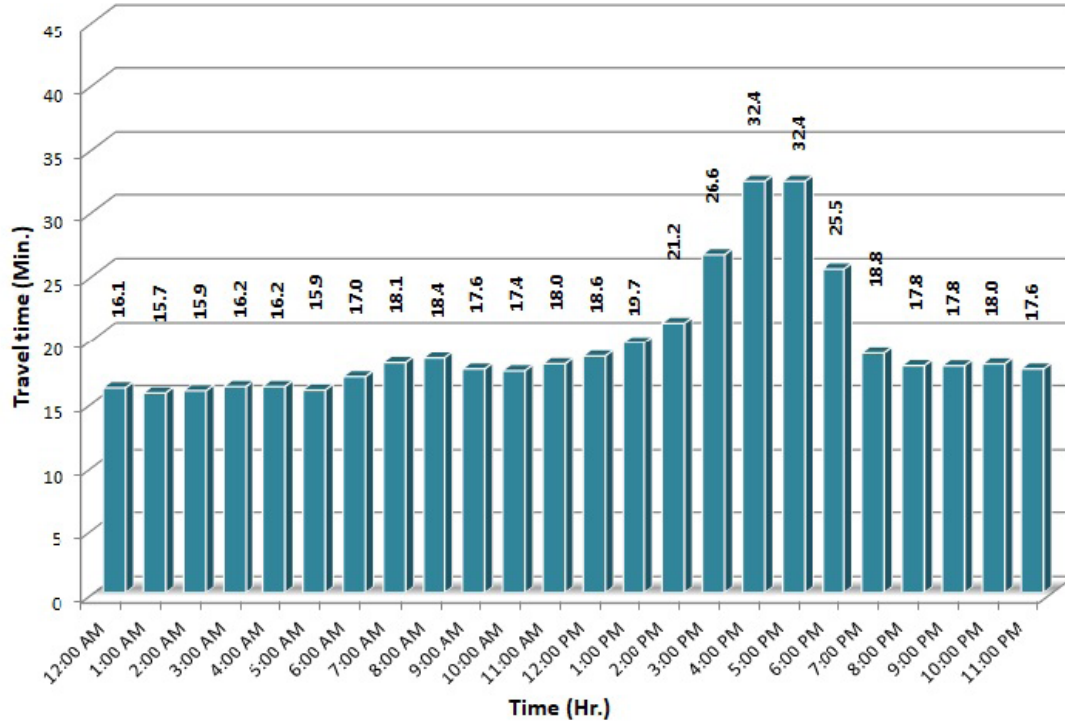
\*\* Data obtained from Regional Integrated Transportation System (RITIS), Probe Data Analytics Suite.

\*\*\* Free Flow Speed.

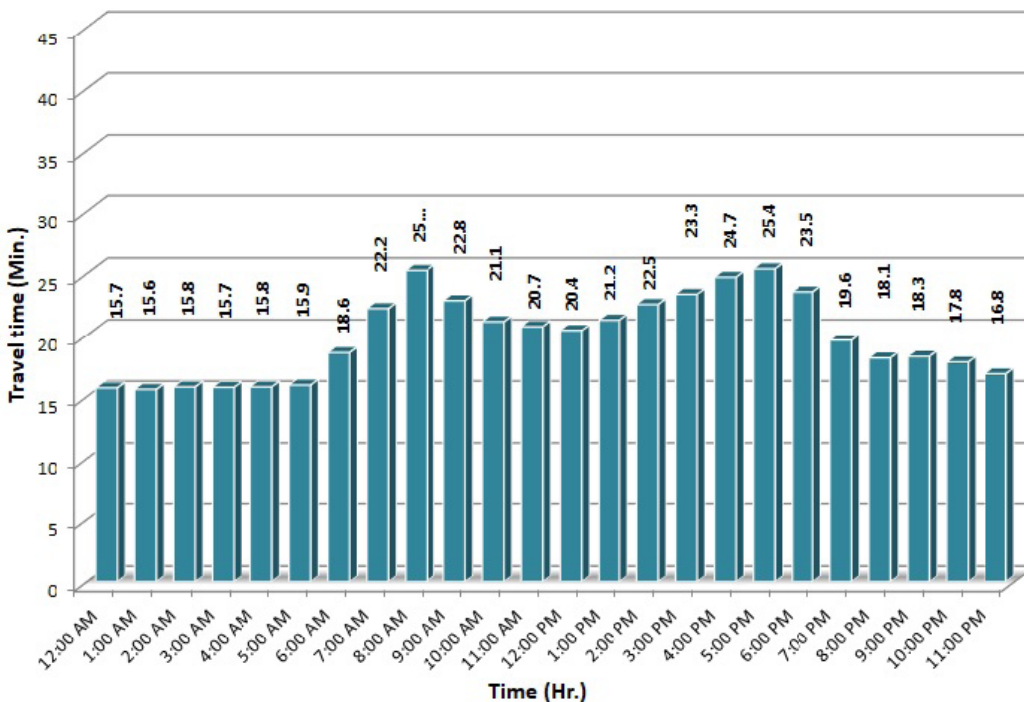
## TRAVEL TIME RELIABILITY REPORT

### Weekdays Travel Times by Time of Day\*

**I-95 Northbound: 17.3 Miles\*\***  
From: US-1  
To: Miami-Dade / Broward County Line



**I-95 Southbound: 17.3 Miles\*\***  
From: Miami-Dade / Broward County Line  
To: US-1



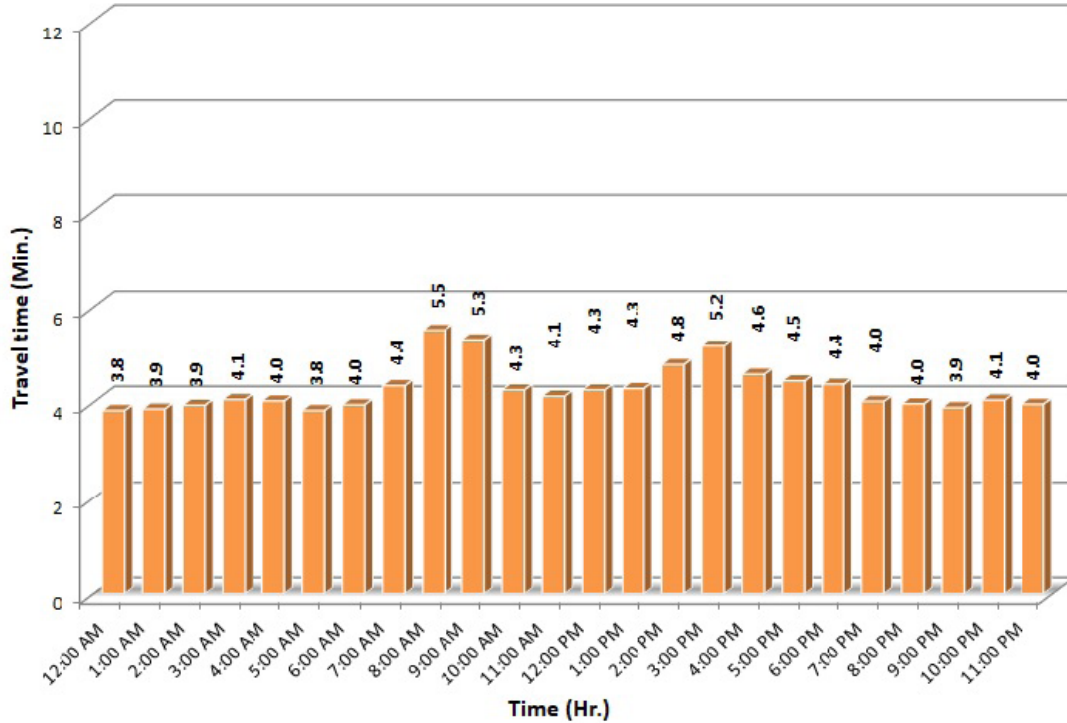
\* Twelve-month weekday average from July 1st, 2020 to June 30th, 2021.

\*\* Data obtained from Regional Integrated Transportation System (RITIS), Probe Data Analytics Suite.

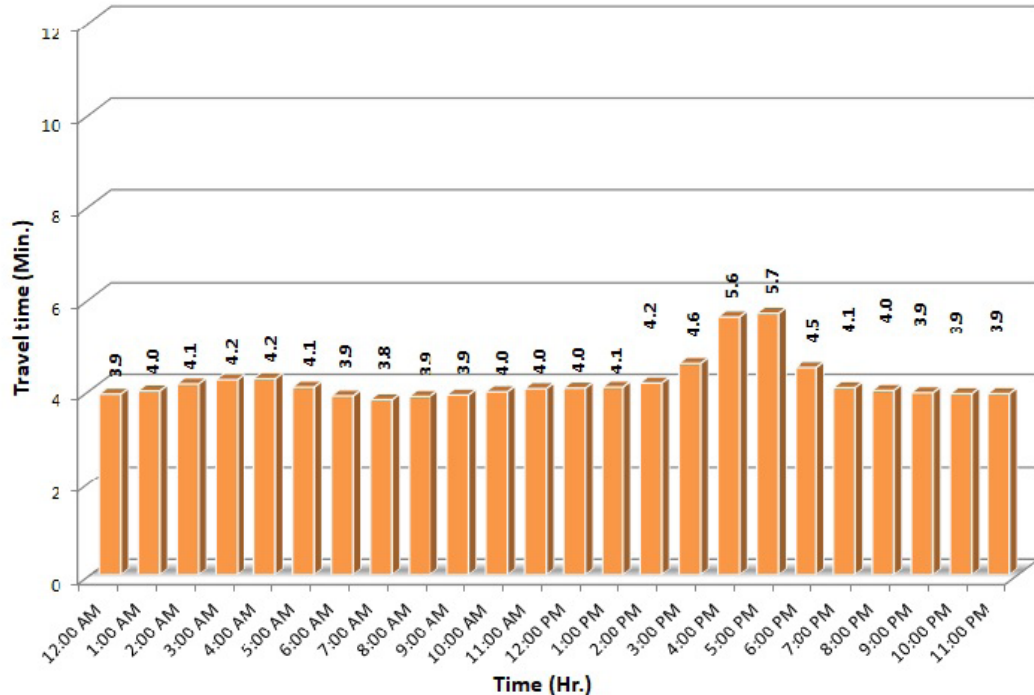
## TRAVEL TIME RELIABILITY REPORT

### Weekdays Travel Times by Time of Day\*

**I-195 Eastbound: 4.9 Miles\*\***  
From: West of North Miami Avenue  
To: West of Alton Road



**I-195 Westbound: 4.9 Miles\*\***  
From: West of Alton Road  
To: West of North Miami Avenue



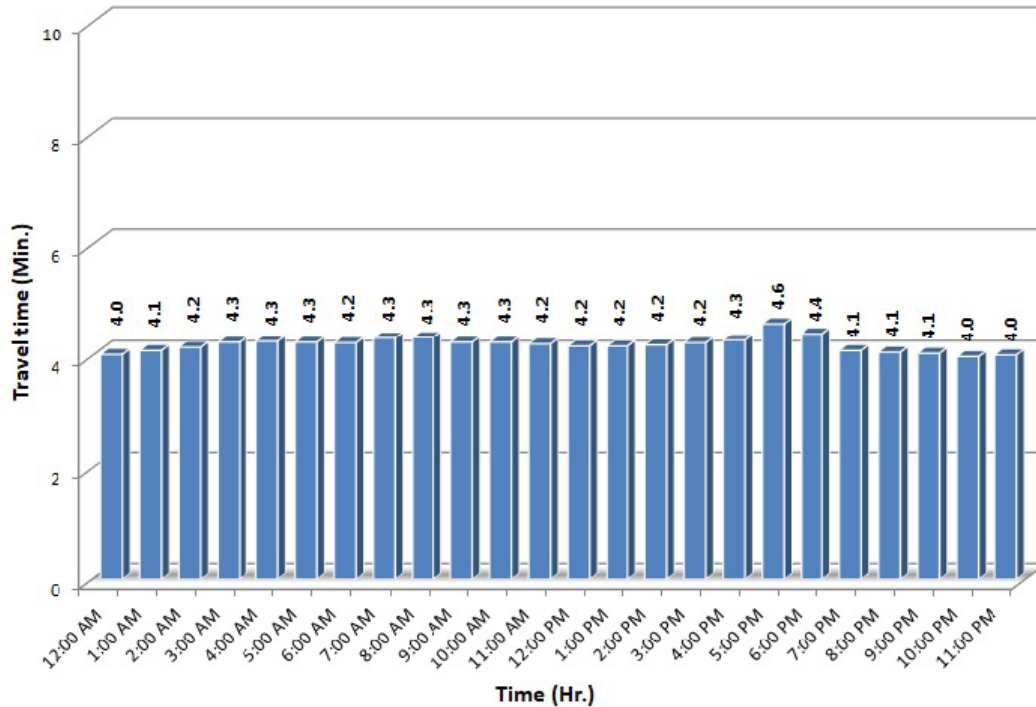
\* Twelve-month weekday average from July 1st, 2020 to June 30th, 2021.

\*\* Data obtained from Regional Integrated Transportation System (RITIS), Probe Data Analytics Suite.

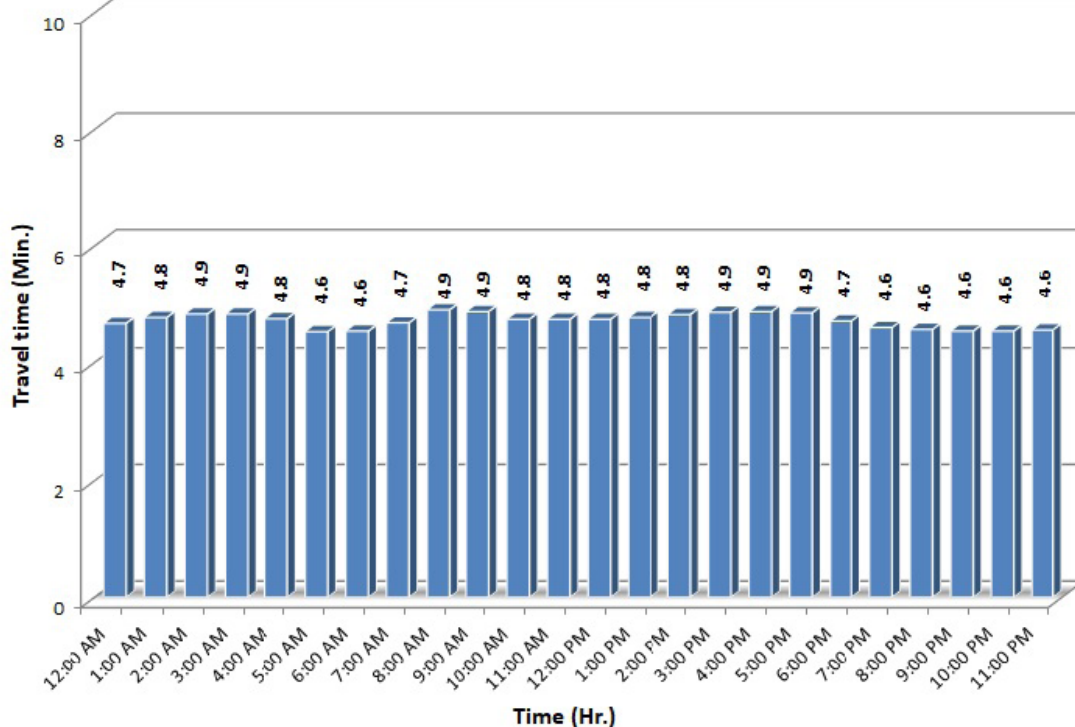
## TRAVEL TIME RELIABILITY REPORT

### Weekdays Travel Times by Time of Day\*

**I-75 Northbound: 5.4 Miles\*\***  
From: West of SR 826  
To: North of Florida's Turnpike



**I-75 Southbound: 5.4 Miles\*\***  
From: North of Florida's Turnpike  
To: West of SR 826



\* Twelve-month weekday average from July 1st, 2020 to June 30th, 2021.

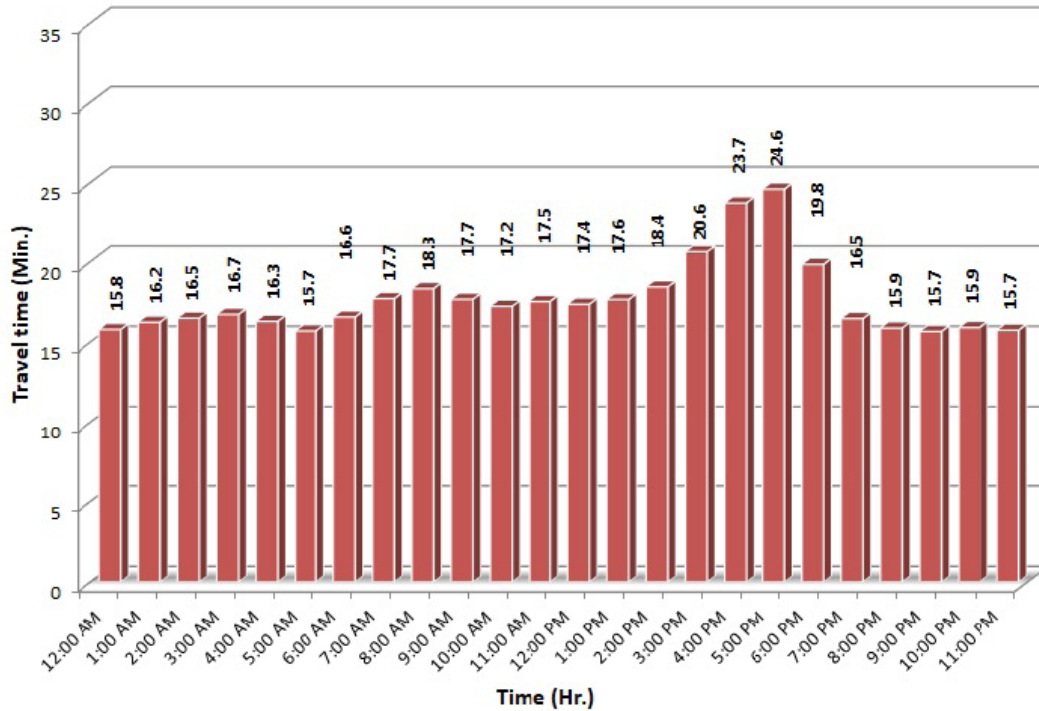
\*\* Data obtained from Regional Integrated Transportation System (RITIS), Probe Data Analytics Suite. Excludes express lanes.




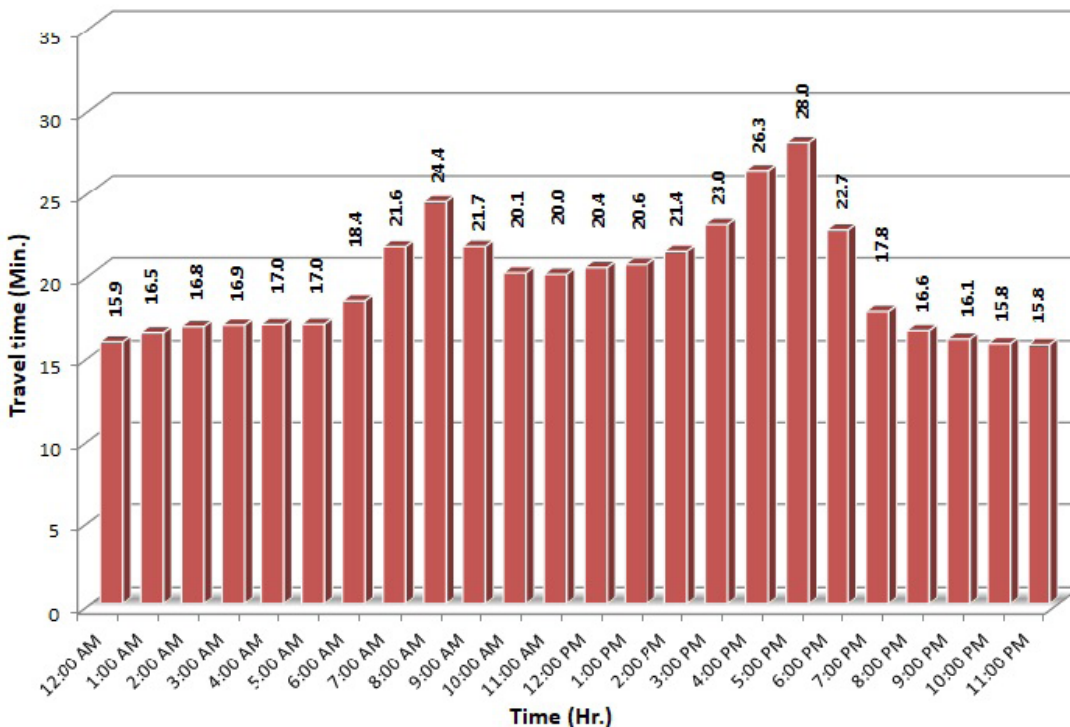
## TRAVEL TIME RELIABILITY REPORT

### Weekdays Travel Times by Time of Day\*

**SR 826 Northbound: 16.6 Miles\*\***  
From: US-1  
To: North of NW 154 Street

**SR 826 Southbound: 16.6 Miles\*\***  
From: North of NW 154 Street  
To: US-1

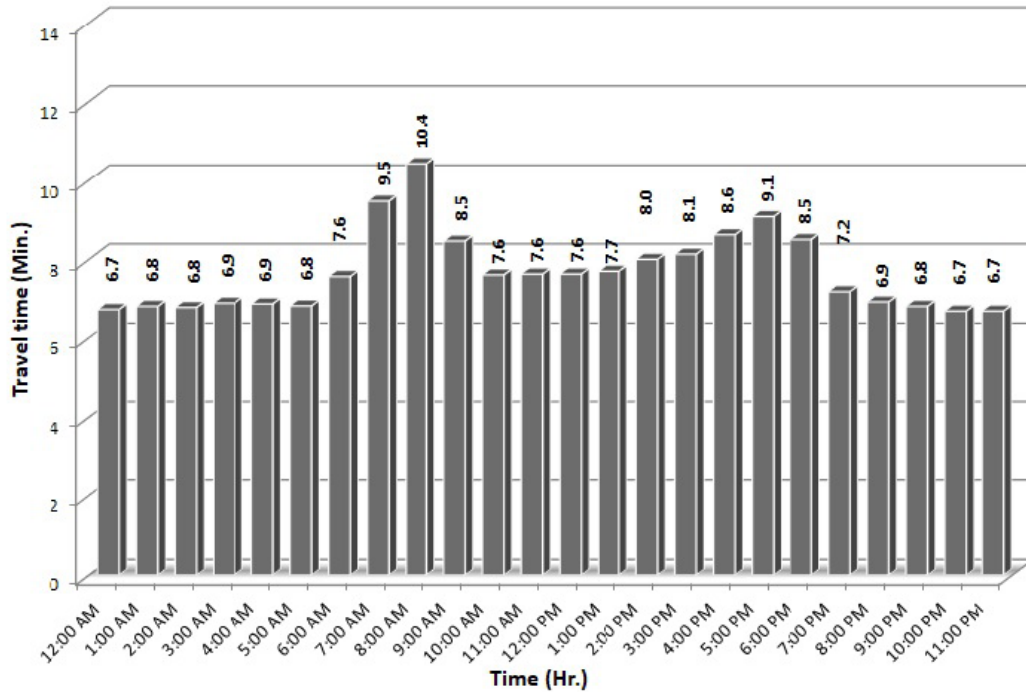
\* Twelve-month weekday average from July 1st, 2020 to June 30th, 2021.

\*\* Data obtained from Regional Integrated Transportation System (RITIS), Probe Data Analytics Suite. Excludes express lanes.

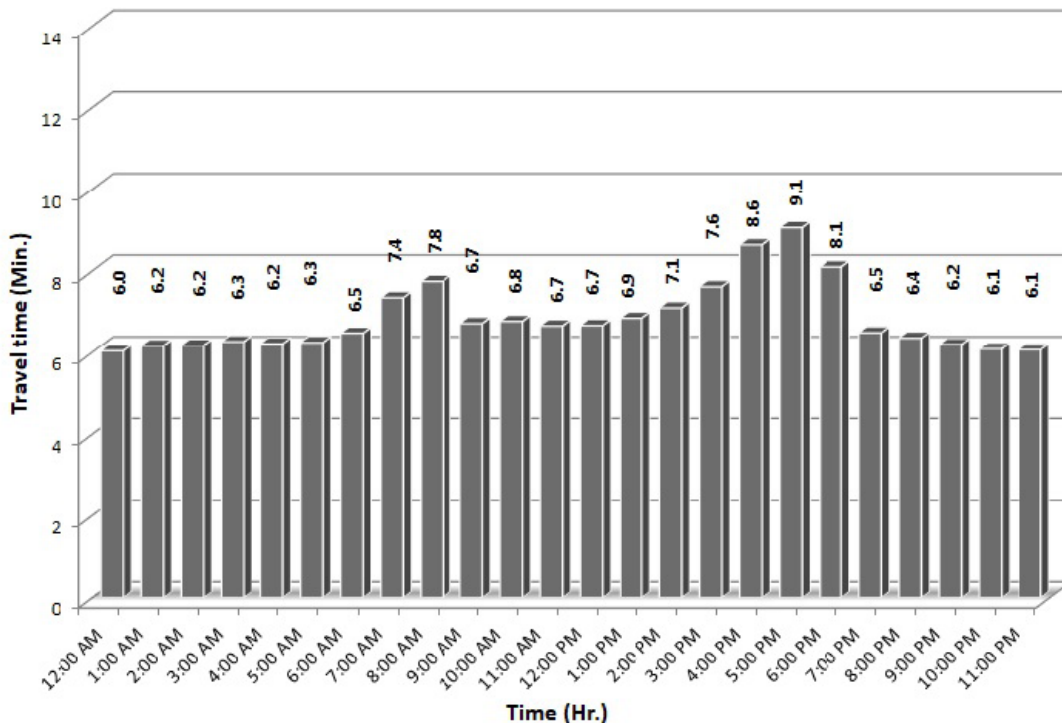
## TRAVEL TIME RELIABILITY REPORT

### Weekdays Travel Times by Time of Day\*

**SR 826 Eastbound: 7.1 Miles\*\***  
From: West of NW 67 Avenue  
To: I-95

**SR 826 Westbound: 7.1 Miles\*\***  
From: I-95  
To: West of NW 67 Avenue

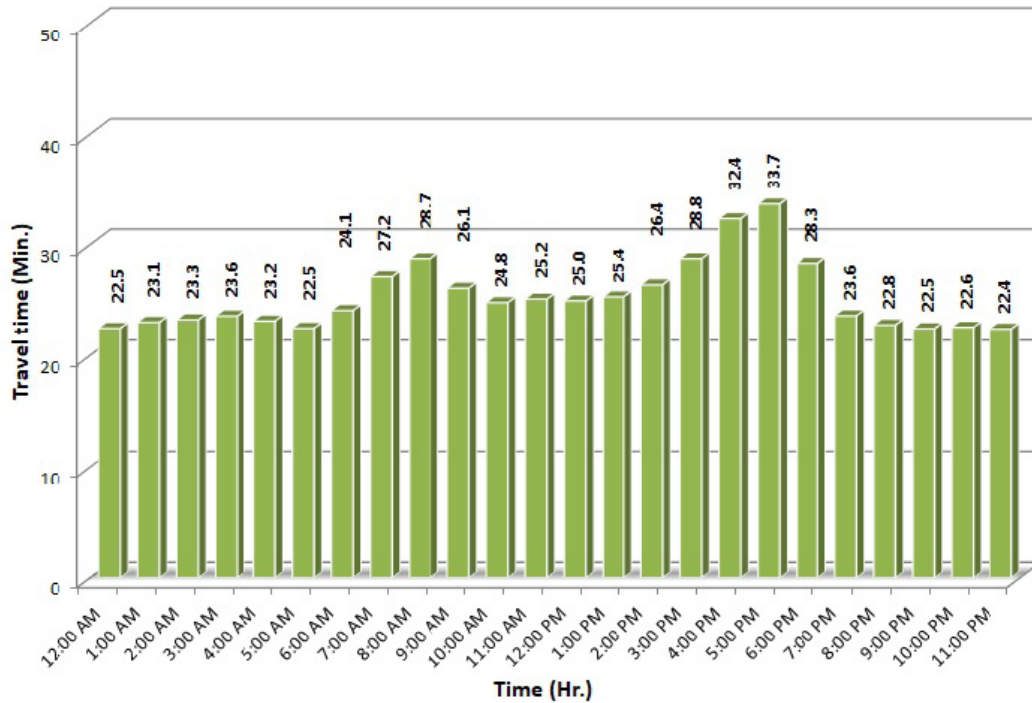
\* Twelve-month weekday average from July 1st, 2020 to June 30th, 2021.

\*\* Data obtained from Regional Integrated Transportation System (RITIS), Probe Data Analytics Suite.

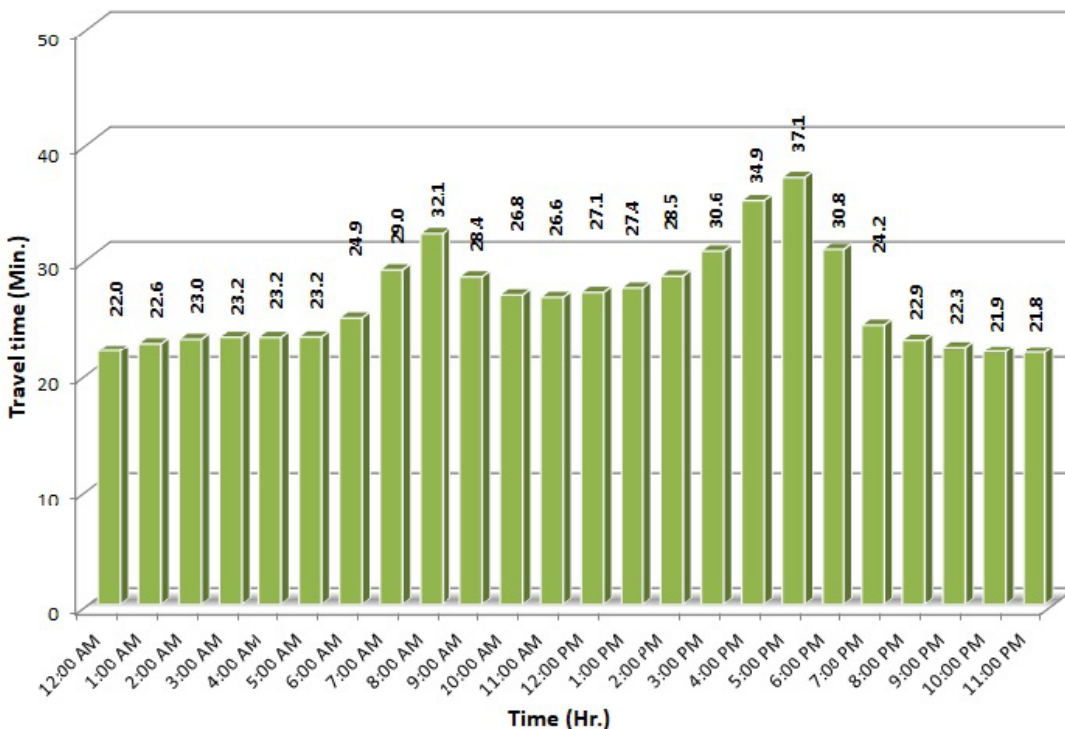
## TRAVEL TIME RELIABILITY REPORT

### Weekdays Travel Times by Time of Day\*

SR 826 Northbound/Eastbound : 24.2 Miles\*\*  
From: US-1  
To: I-95



SR 826 Southbound/Westbound: 24.2 Miles\*\*  
From: I-95  
To: US-1



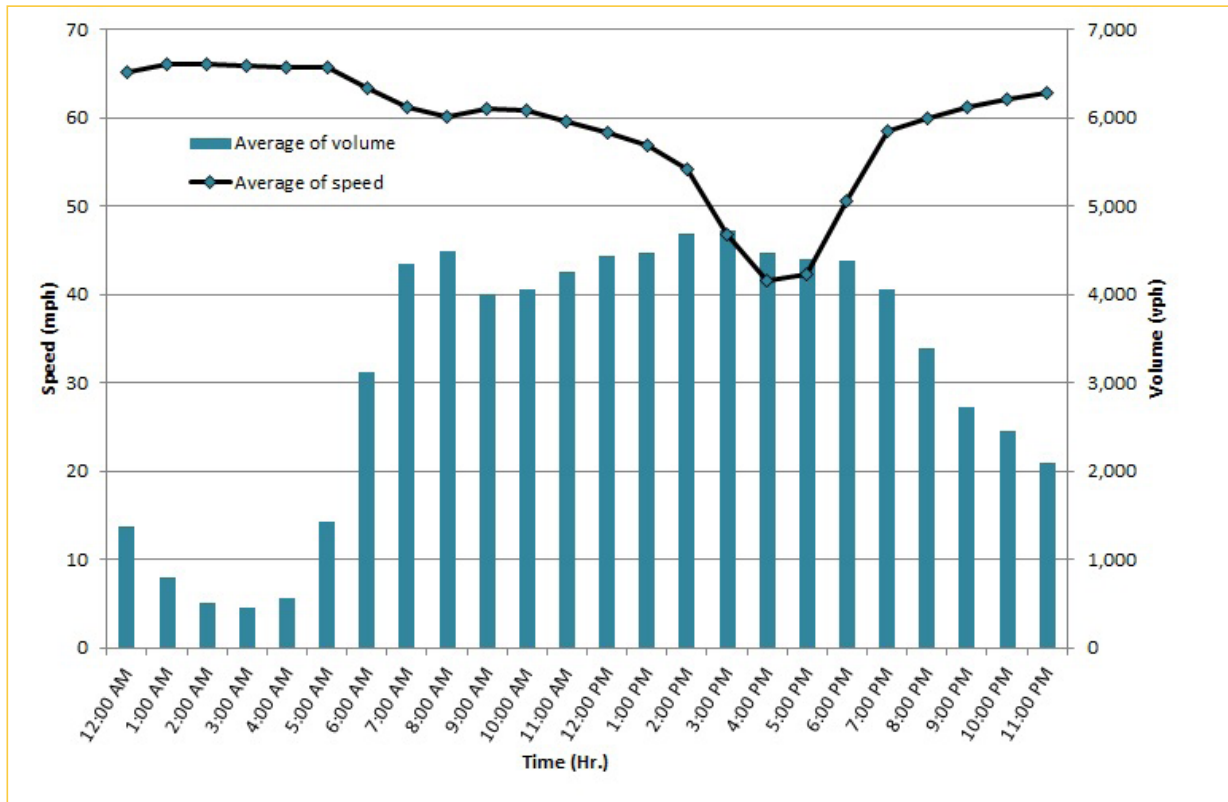
\* Twelve-month weekday average from July 1st, 2020 to June 30th, 2021.

\*\* Data obtained from Regional Integrated Transportation System (RITIS), Probe Data Analytics Suite. Excludes express lanes.

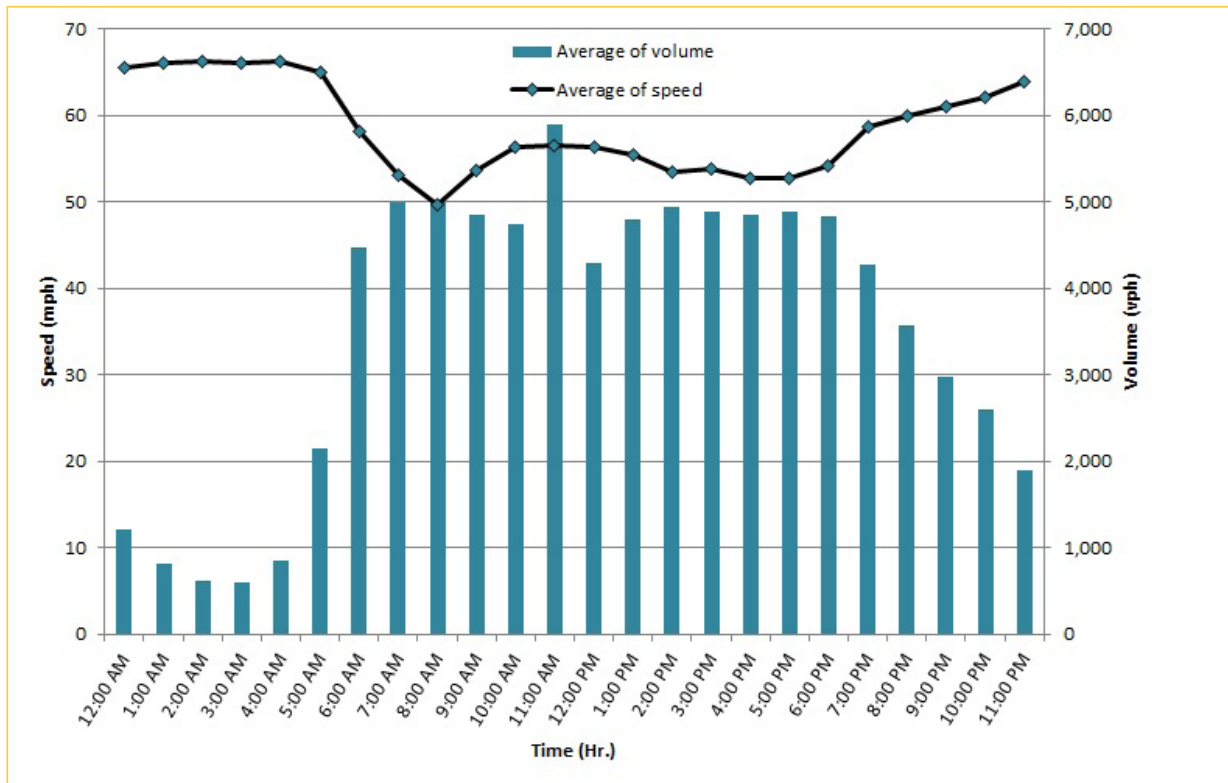
## TRAVEL TIME RELIABILITY REPORT

### Weekdays Speeds and Volumes by Time of Day\*

**I-95 Northbound: 17.3 Miles\*\***  
From: US-1  
To: Miami-Dade / Broward County Line



**I-95 Southbound: 17.3 Miles\*\***  
From: Miami-Dade / Broward County Line  
To: US-1



\* Twelve-month weekday average from July 1st, 2020 to June 30th, 2021.

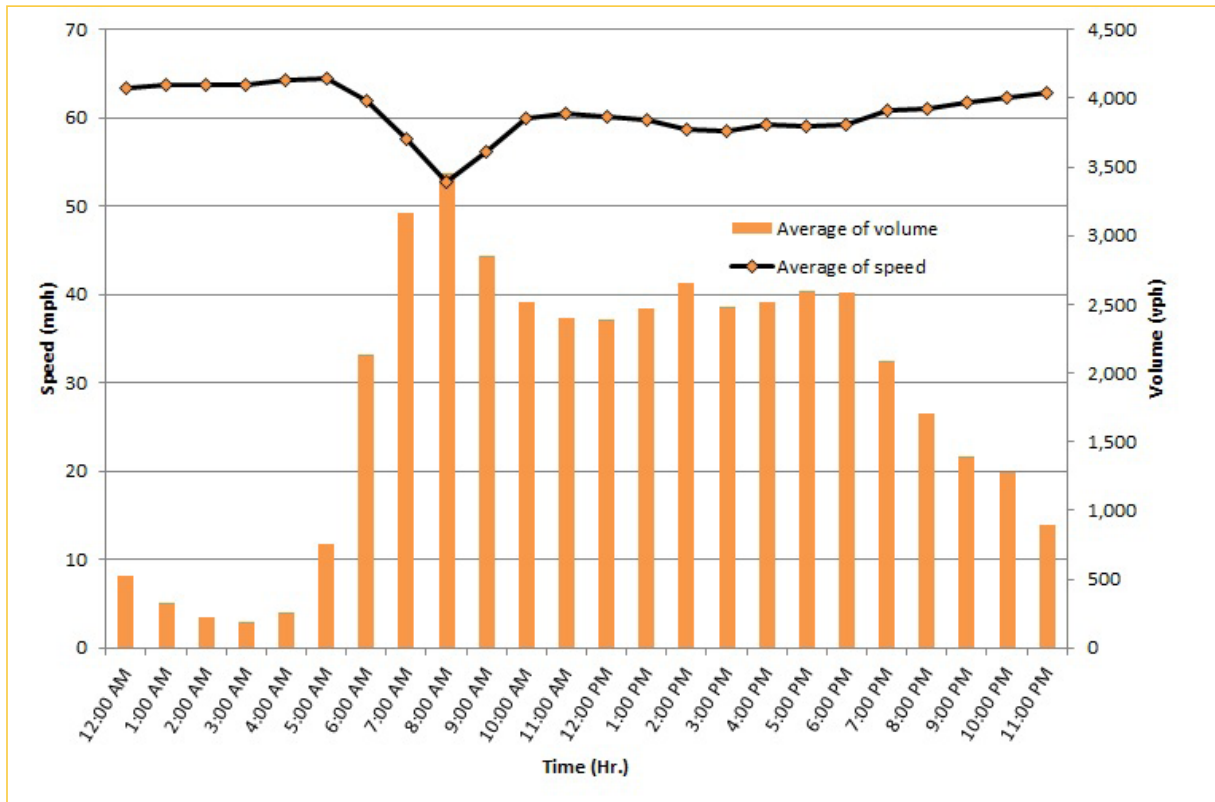
\*\* Data obtained from Regional Integrated Transportation System (RITIS). Excludes express lanes.



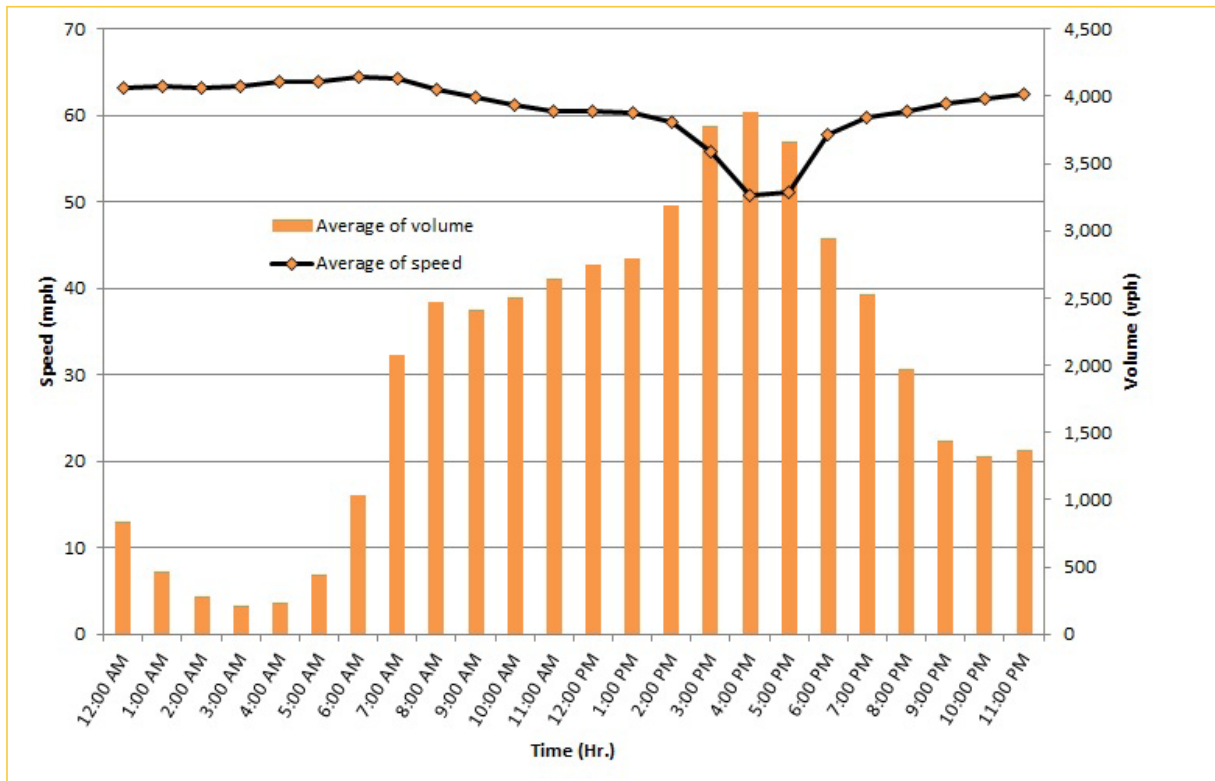
## TRAVEL TIME RELIABILITY REPORT

### Weekdays Speeds and Volumes by Time of Day\*

**I-195 Eastbound: 4.9 Miles\*\***  
From: West of North Miami Avenue  
To: West of Alton Road



**I-195 Westbound: 4.9 Miles\*\***  
From: West of Alton Road  
To: West of North Miami Avenue



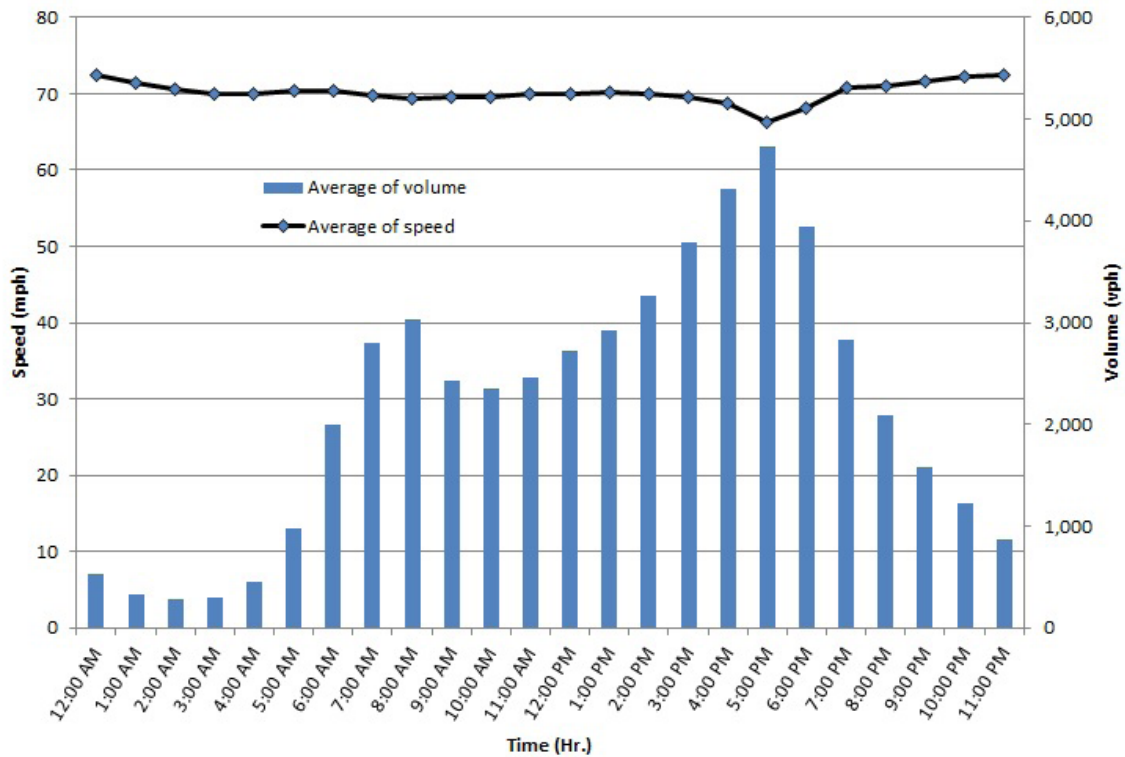
\* Twelve-month weekday average from July 1st, 2020 to June 30th, 2021.

\*\* Data obtained from Regional Integrated Transportation System (RITIS).

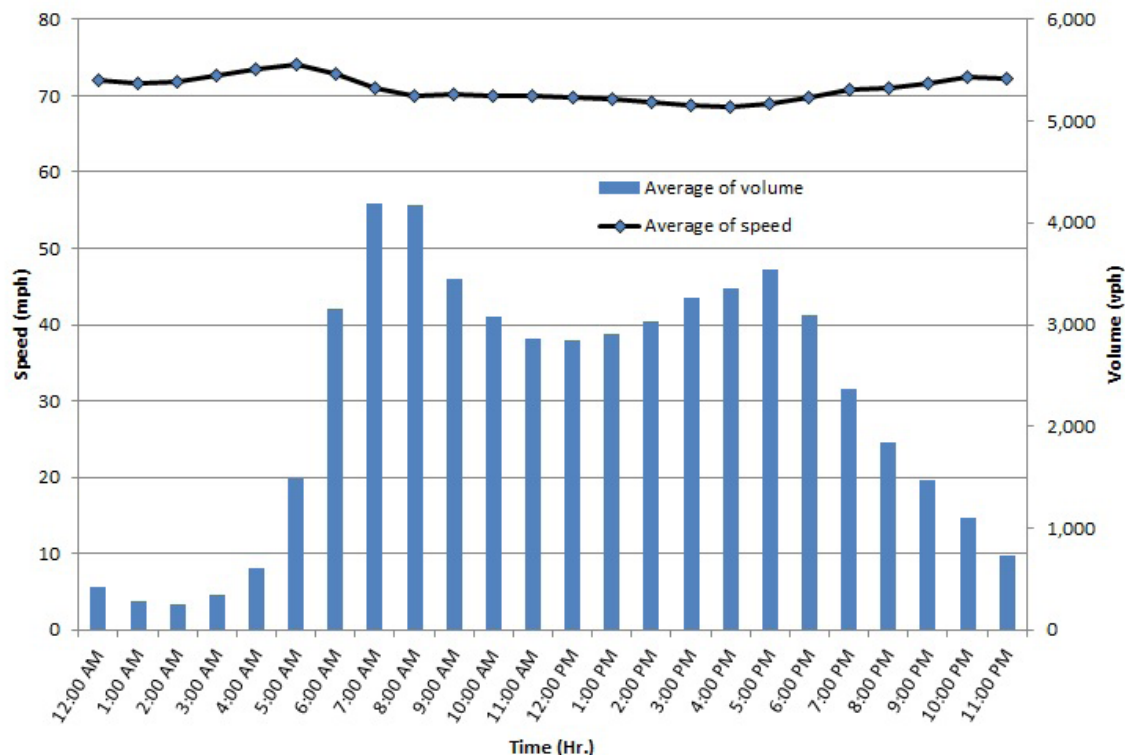
## TRAVEL TIME RELIABILITY REPORT

### Weekdays Speeds and Volumes by Time of Day\*

**I-75 Northbound: 5.4 Miles \*\***  
From: West of SR 826  
To: North of Florida's Turnpike



**I-75 Southbound: 5.4 Miles \*\***  
From: North of Florida's Turnpike  
To: West of SR 826



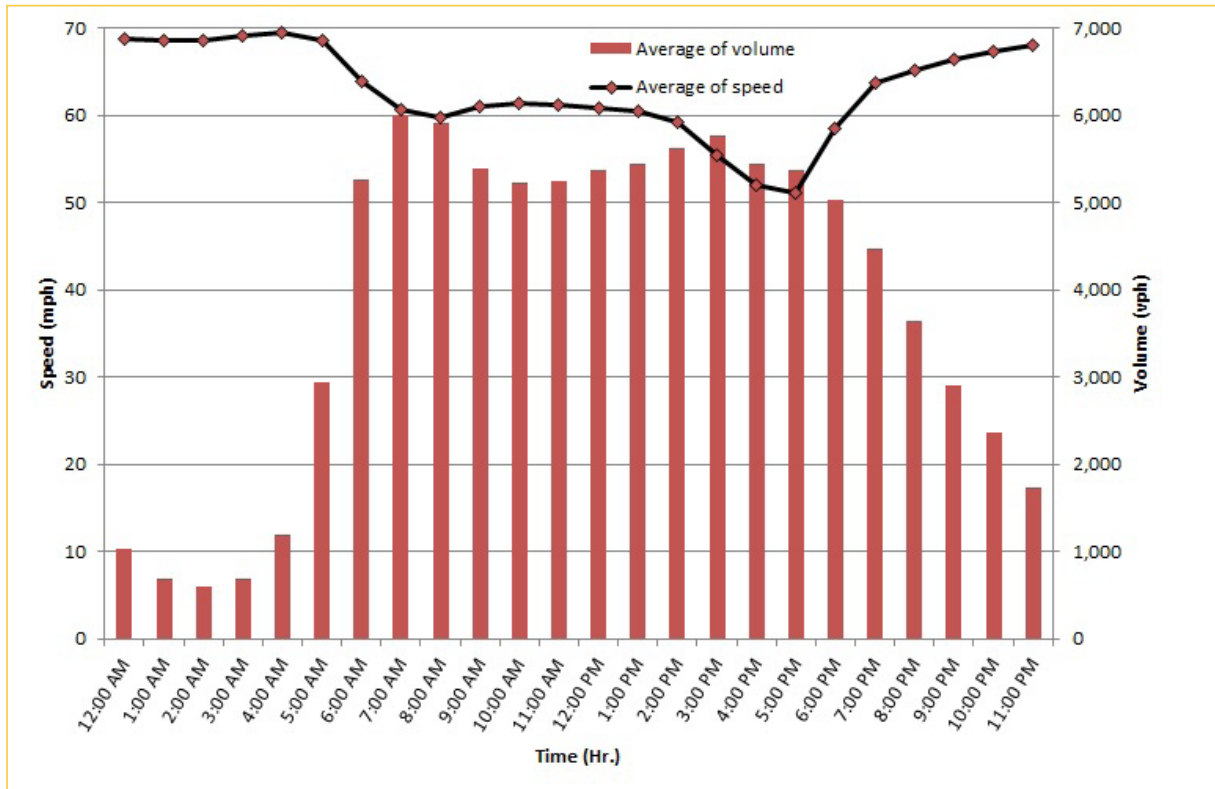
\* Twelve-month weekday average from July 1st, 2020 to June 30th, 2021.

\*\* Data obtained from Regional Integrated Transportation System (RITIS). Excludes express lanes.


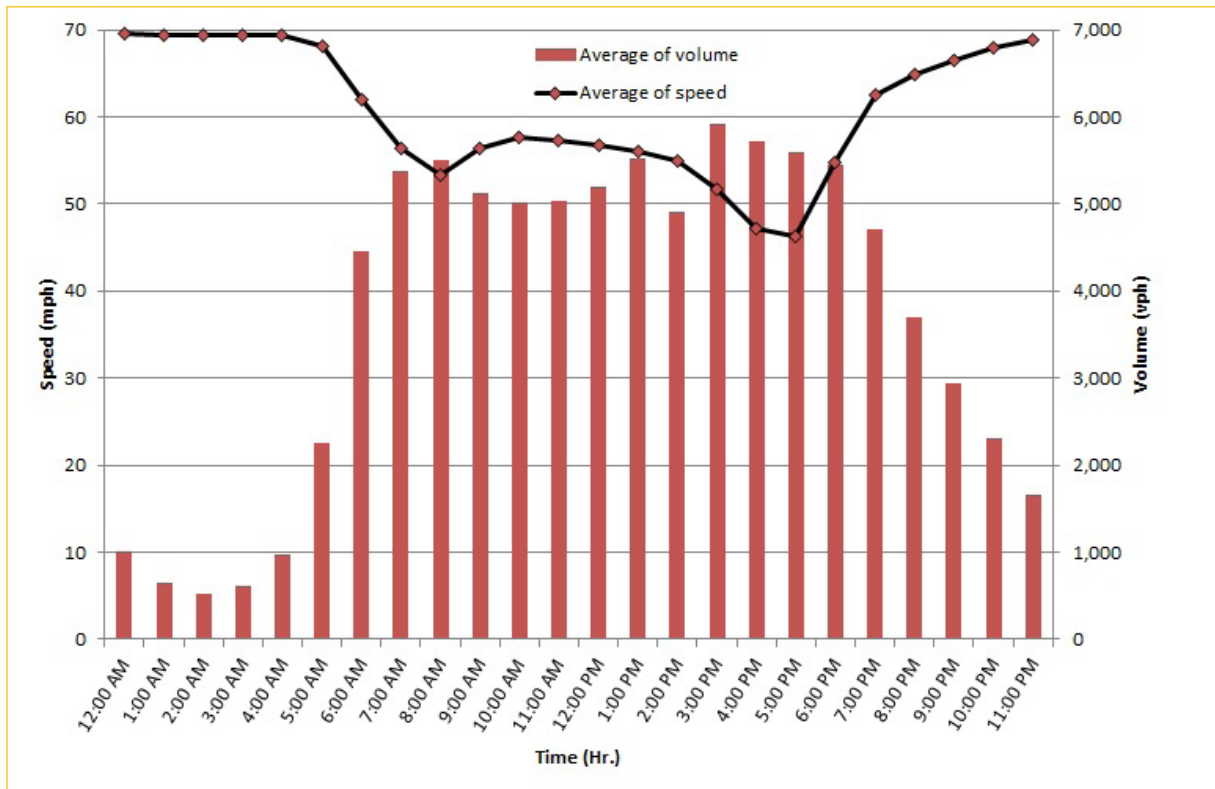
## TRAVEL TIME RELIABILITY REPORT

### Weekdays Speeds and Volumes by Time of Day\*

SR 826 Northbound: 16.6 Miles\*\*  
From: US-1  
To: North of NW 154 Street

SR 826 Southbound: 16.6 Miles\*\*  
From: North of NW 154 Street  
To: US-1

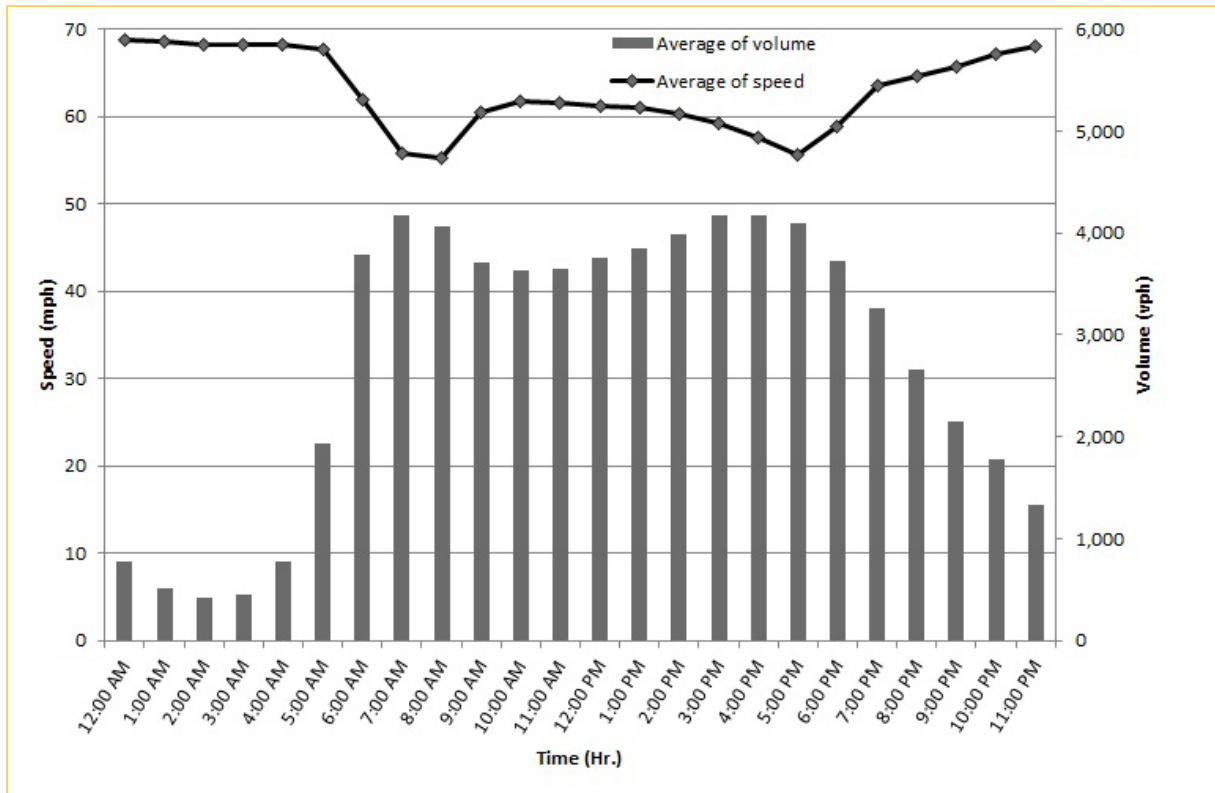
\* Twelve-month weekday average from July 1st, 2020 to June 30th, 2021.

\*\* Data obtained from Regional Integrated Transportation System (RITIS). Excludes express lanes.

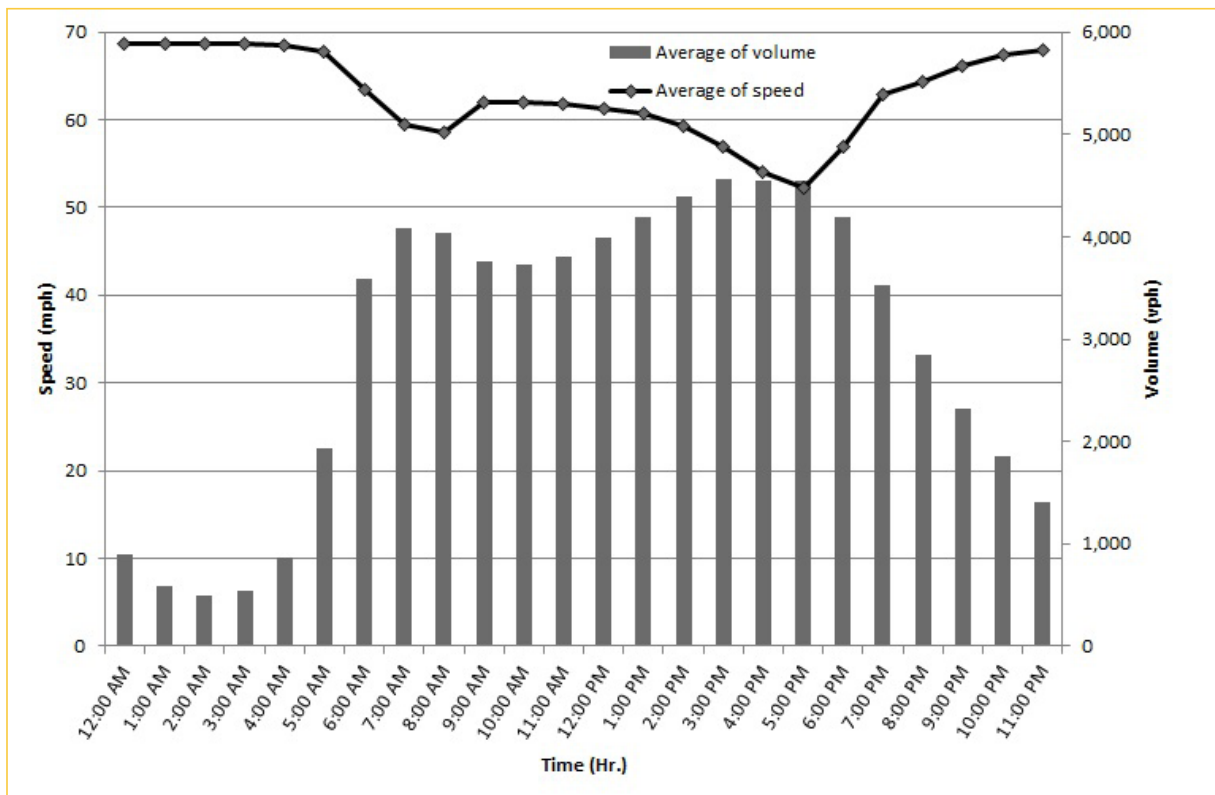
## TRAVEL TIME RELIABILITY REPORT

### Weekdays Speeds and Volumes by Time of Day\*

SR 826 Eastbound: 7.1 Miles\*\*  
From: West of NW 67 Avenue  
To: I-95

SR 826 Westbound: 7.1 Miles\*\*  
From: I-95  
To: West of NW 67 Avenue

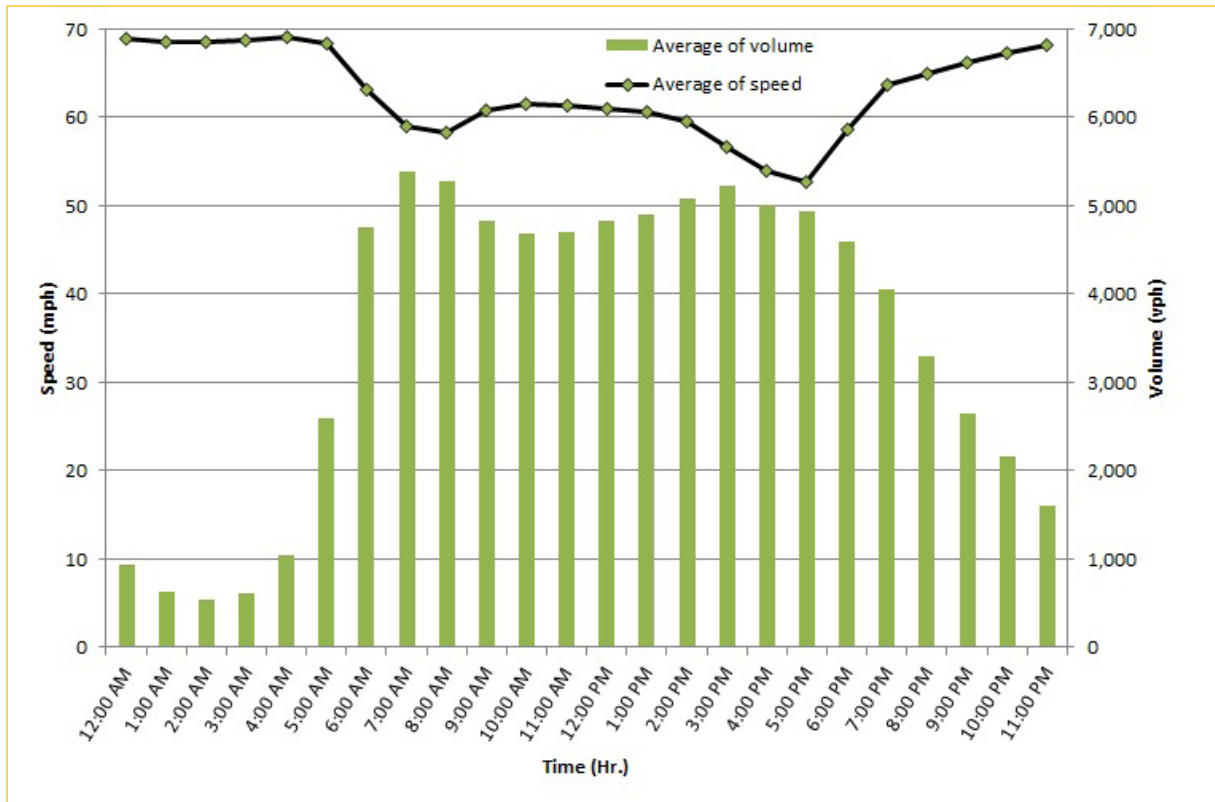
\* Twelve-month weekday average from July 1st, 2020 to June 30th, 2021.

\*\* Data obtained from Regional Integrated Transportation System (RITIS).

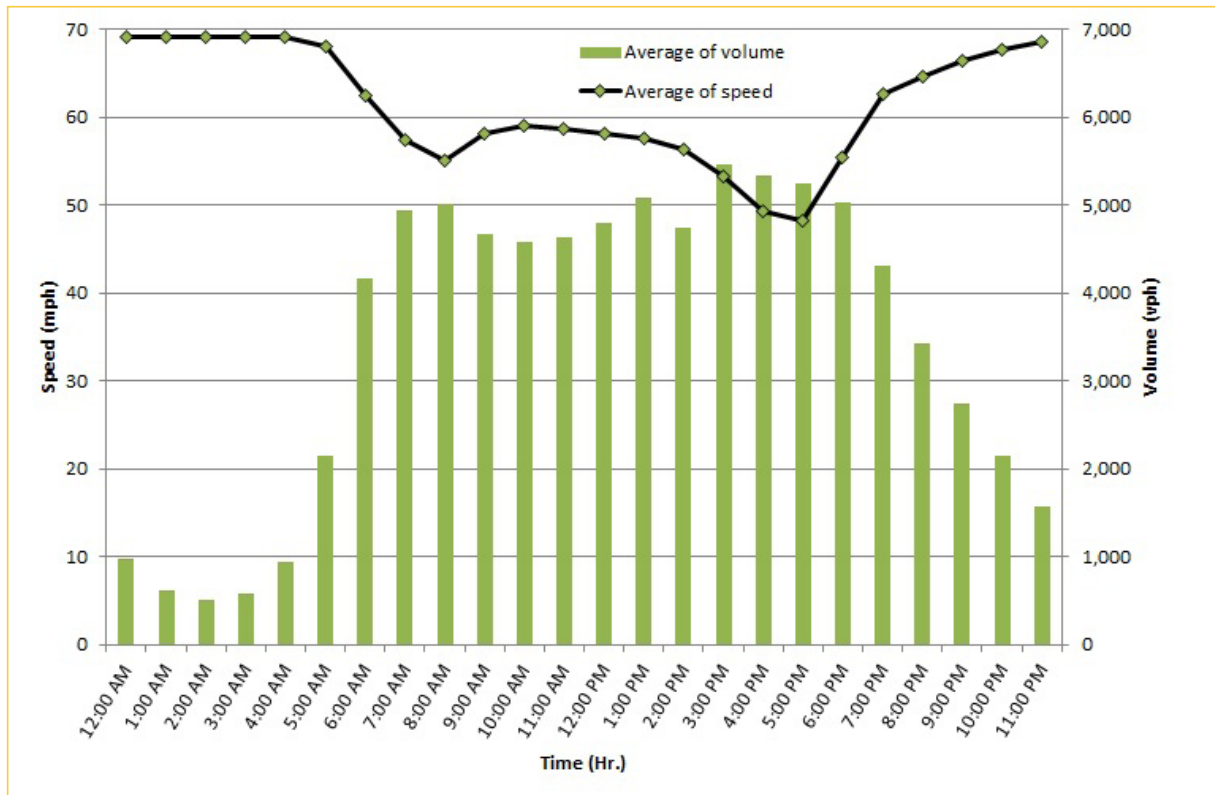
## TRAVEL TIME RELIABILITY REPORT

### Weekdays Speeds and Volumes by Time of Day\*

SR 826 Northbound/Eastbound : 24.2 Miles\*\*  
From: US-1  
To: I-95



SR 826 Southbound/Westbound: 24.2 Miles\*\*  
From: I-95  
To: US-1



\* Twelve-month weekday average from July 1st, 2020 to June 30th, 2021.

\*\* Data obtained from Regional Integrated Transportation System (RITIS). Excludes express lanes.