

TRAVEL TIME RELIABILITY REPORT

Travel Time Index by Roadway*

Time	I-95**		I-195**		I-75**		SR 826**					
	NB	SB	EB	WB	NB	SB	NB	EB	NE	SB	WB	SW
0:00	0.89	0.88	0.82	0.99	0.99	1.00	0.85	0.86	0.86	0.81	0.86	0.82
1:00	0.88	0.88	0.84	1.00	1.01	1.03	0.89	0.87	0.88	0.84	0.88	0.85
2:00	0.89	0.89	0.87	1.03	1.01	1.03	0.89	0.86	0.88	0.86	0.89	0.87
3:00	0.91	0.89	0.89	1.05	1.04	1.04	0.91	0.87	0.90	0.86	0.89	0.87
4:00	0.91	0.89	0.89	1.06	1.03	1.02	0.87	0.87	0.87	0.85	0.88	0.86
5:00	0.87	0.89	0.83	1.00	1.02	0.97	0.83	0.86	0.84	0.85	0.87	0.86
6:00	0.92	1.03	0.84	0.95	1.01	0.96	0.89	0.99	0.92	0.92	0.91	0.92
7:00	0.95	1.20	0.92	0.93	1.03	1.10	0.93	1.17	1.01	1.05	1.04	1.04
8:00	0.97	1.28	1.11	0.94	1.04	1.19	0.94	1.18	1.01	1.14	1.08	1.12
9:00	0.94	1.16	1.06	0.95	1.02	1.05	0.92	1.00	0.95	1.03	0.98	1.02
10:00	0.92	1.07	0.91	0.96	1.01	0.99	0.91	0.93	0.91	0.96	0.99	0.96
11:00	0.94	1.05	0.87	0.97	1.01	0.99	0.91	0.92	0.91	0.95	0.94	0.95
12:00	0.97	1.04	0.85	0.98	1.00	1.00	0.91	0.92	0.91	0.97	0.93	0.96
13:00	1.02	1.05	0.85	1.00	1.00	1.00	0.91	0.92	0.92	0.98	0.95	0.97
14:00	1.08	1.09	0.91	1.00	1.00	1.01	0.96	0.95	0.96	1.01	0.97	1.00
15:00	1.27	1.15	0.95	1.06	1.01	1.02	1.05	0.97	1.02	1.06	1.02	1.05
16:00	1.52	1.24	0.87	1.17	1.02	1.02	1.16	1.04	1.13	1.22	1.14	1.20
17:00	1.54	1.24	0.87	1.19	1.08	1.00	1.18	1.07	1.15	1.27	1.18	1.25
18:00	1.25	1.15	0.89	1.06	1.06	0.98	1.01	1.01	1.01	1.08	1.03	1.07
19:00	1.01	0.99	0.83	0.97	0.98	0.97	0.87	0.90	0.88	0.87	0.89	0.87
20:00	0.95	0.95	0.82	0.97	0.98	1.00	0.83	0.88	0.85	0.82	0.88	0.83
21:00	0.94	0.97	0.81	0.97	0.98	0.98	0.83	0.86	0.84	0.80	0.86	0.81
22:00	0.94	0.97	0.82	0.98	0.97	0.98	0.84	0.84	0.84	0.79	0.84	0.81
23:00	0.93	0.93	0.82	0.98	0.99	0.99	0.84	0.85	0.84	0.79	0.85	0.81
FFS***	62 mph	63 mph	59 mph	55 mph	69 mph	66 mph	60 mph	63 mph	61 mph	62 mph	62 mph	62 mph

Maximum Travel Time Index.

Travel Time Index (TTI) is a measure of average conditions that indicates how much longer, **on average**, travel times are during congestion compared to during light traffic.

Real World Example: A TTI of 1.60 means that for a trip that usually takes 10 minutes in light traffic, a traveler should budget for an additional 6 minutes **on average**.



* Twelve-month weekday average from February 1st, 2020 to January 31st, 2021.

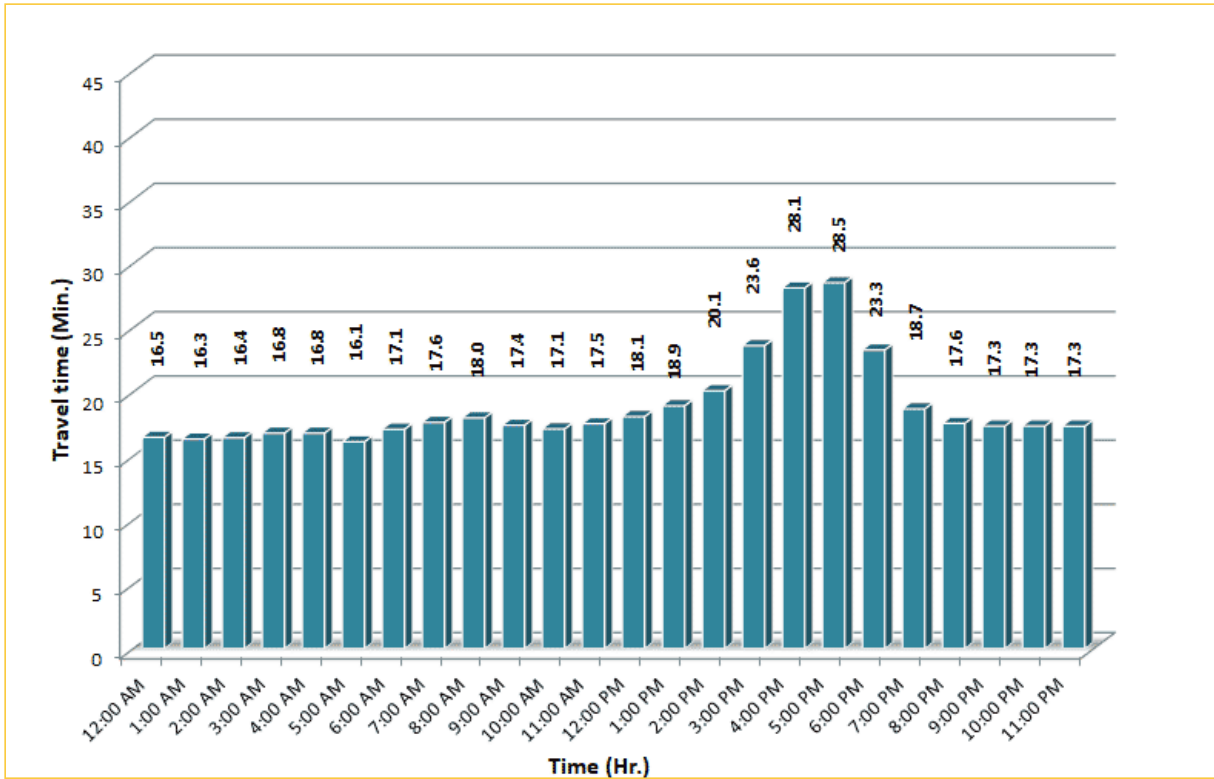
** Data obtained from Regional Integrated Transportation System (RITIS), Probe Data Analytics Suite.

*** Free Flow Speed.

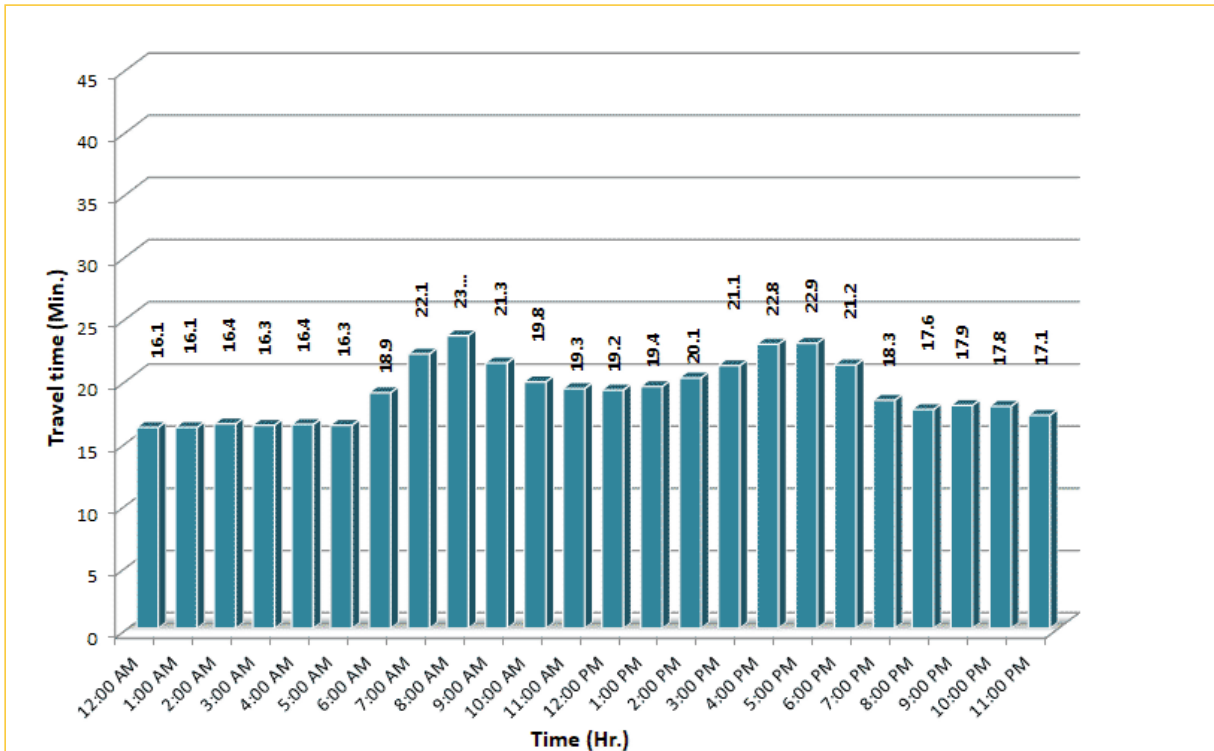
TRAVEL TIME RELIABILITY REPORT

Weekdays Travel Times by Time of Day*

I-95 Northbound: 17.3 Miles**
 From: US-1
 To: Miami-Dade / Broward County Line

I-95 Southbound: 17.3 Miles**
 From: Miami-Dade / Broward County Line
 To: US-1

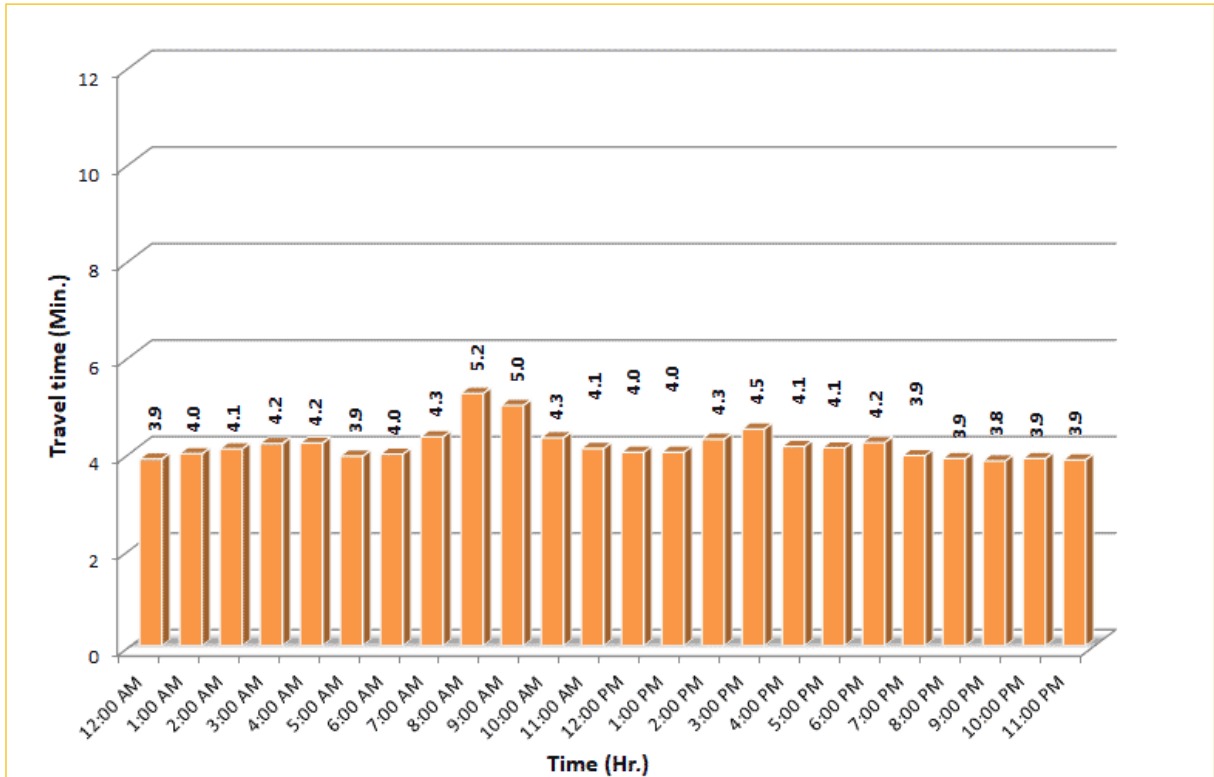
* Twelve-month weekday average from February 1st, 2020 to January 31st, 2021.

** Data obtained from Regional Integrated Transportation System (RITIS), Probe Data Analytics Suite.

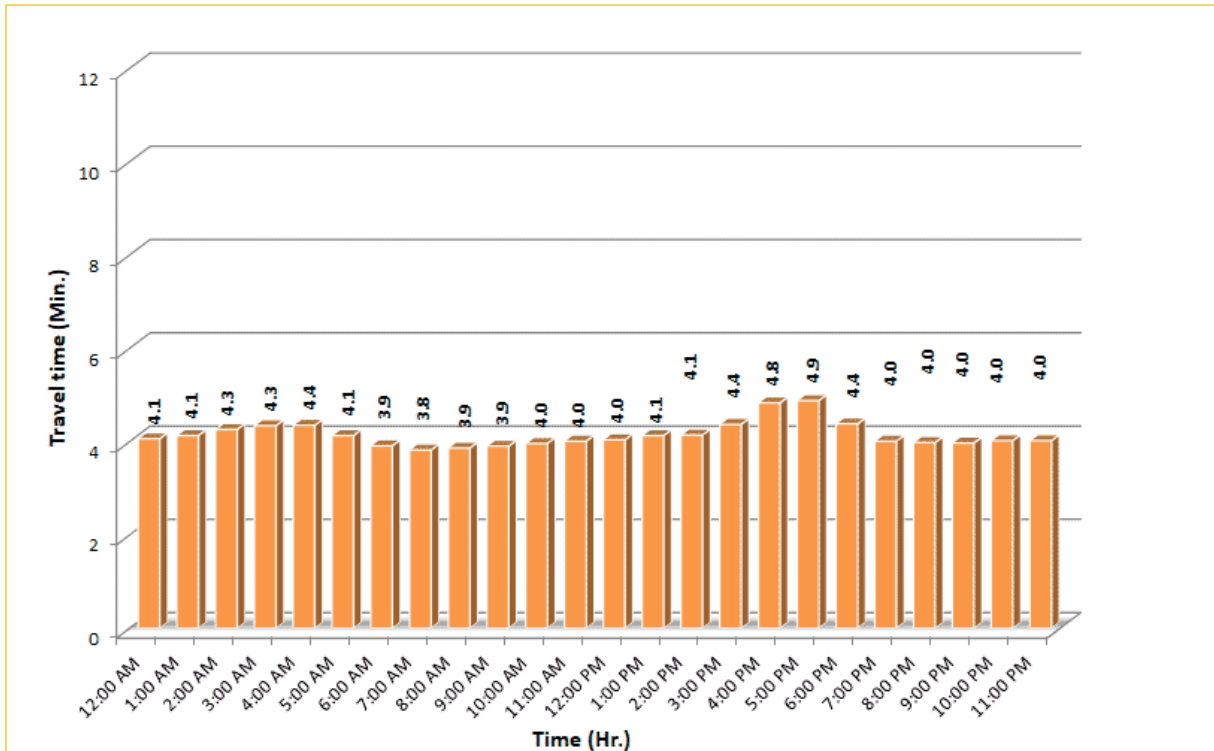
TRAVEL TIME RELIABILITY REPORT

Weekdays Travel Times by Time of Day*

I-195 Eastbound: 4.9 Miles**
 From: West of North Miami Avenue
 To: West of Alton Road

I-195 Westbound: 4.9 Miles**
 From: West of Alton Road
 To: West of North Miami Avenue


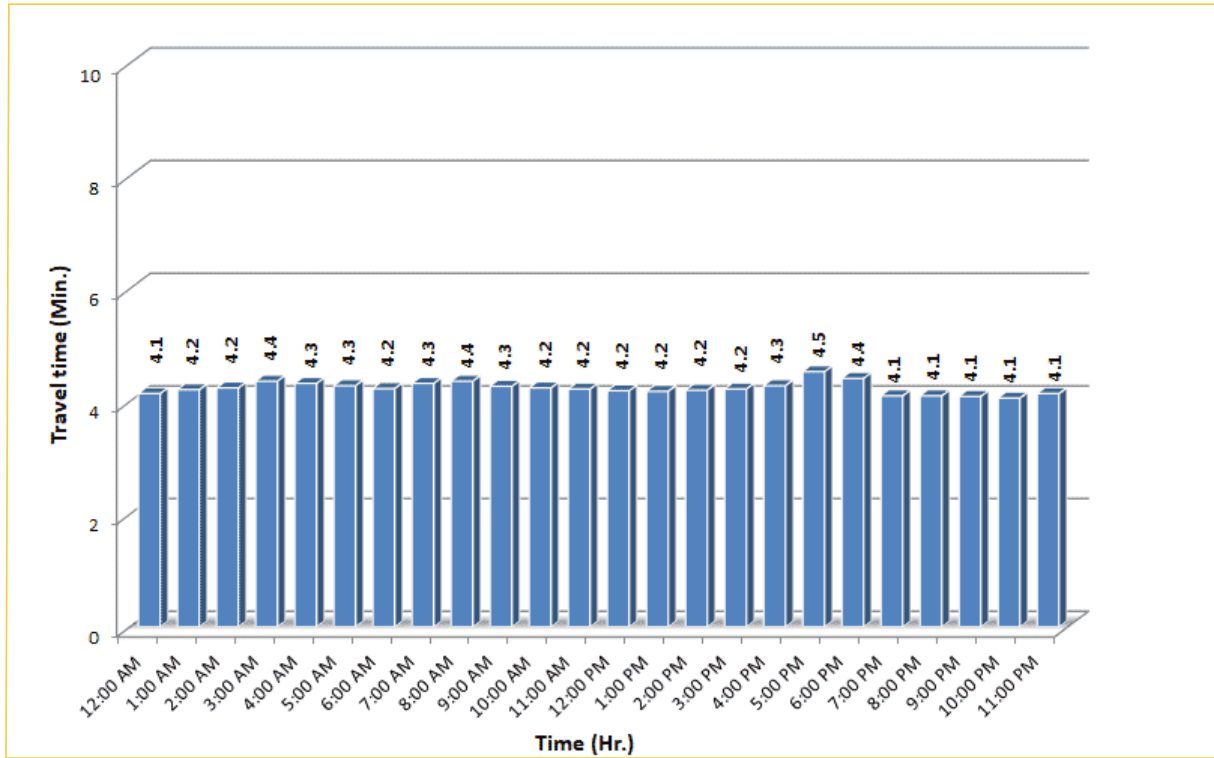
* Twelve-month weekday average from February 1st, 2020 to January 31st, 2021.

** Data obtained from Regional Integrated Transportation System (RITIS), Probe Data Analytics Suite.

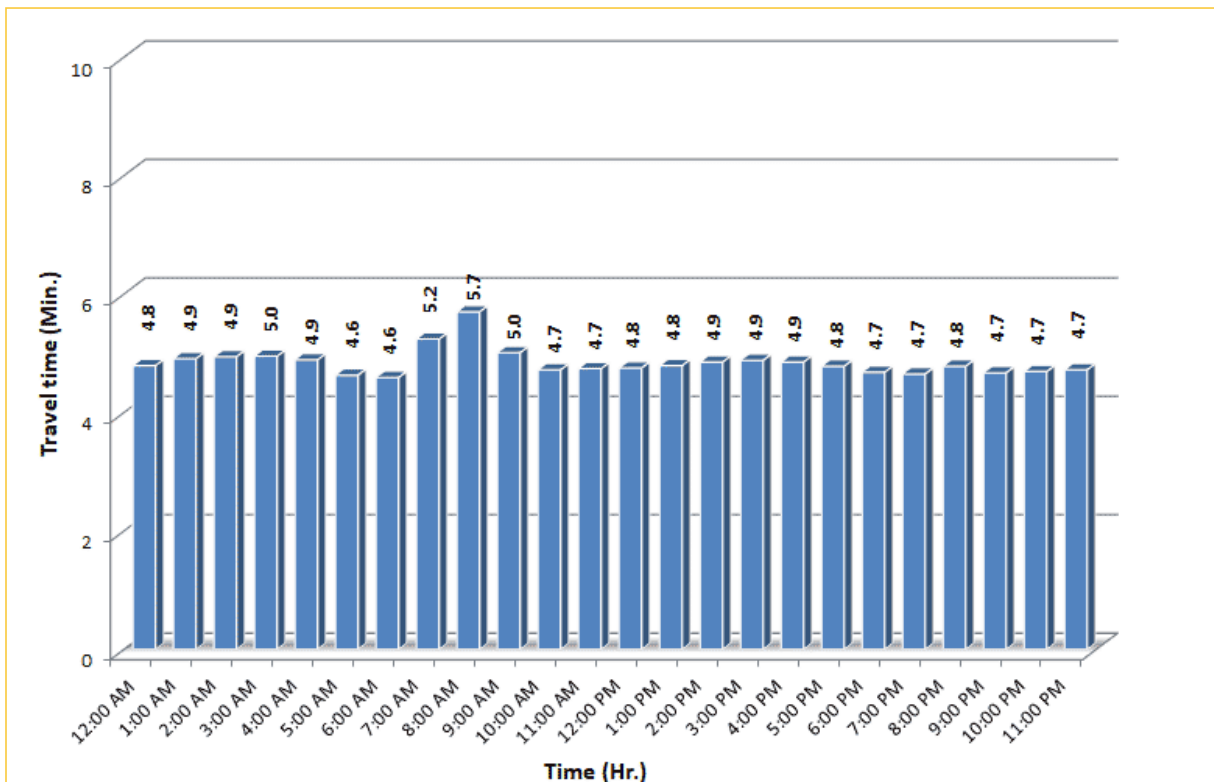
TRAVEL TIME RELIABILITY REPORT

Weekdays Travel Times by Time of Day*

I-75 Northbound: 5.4 Miles**
 From: West of SR 826
 To: North of Florida's Turnpike

I-75 Southbound: 5.4 Miles**
 From: North of Florida's Turnpike
 To: West of SR 826

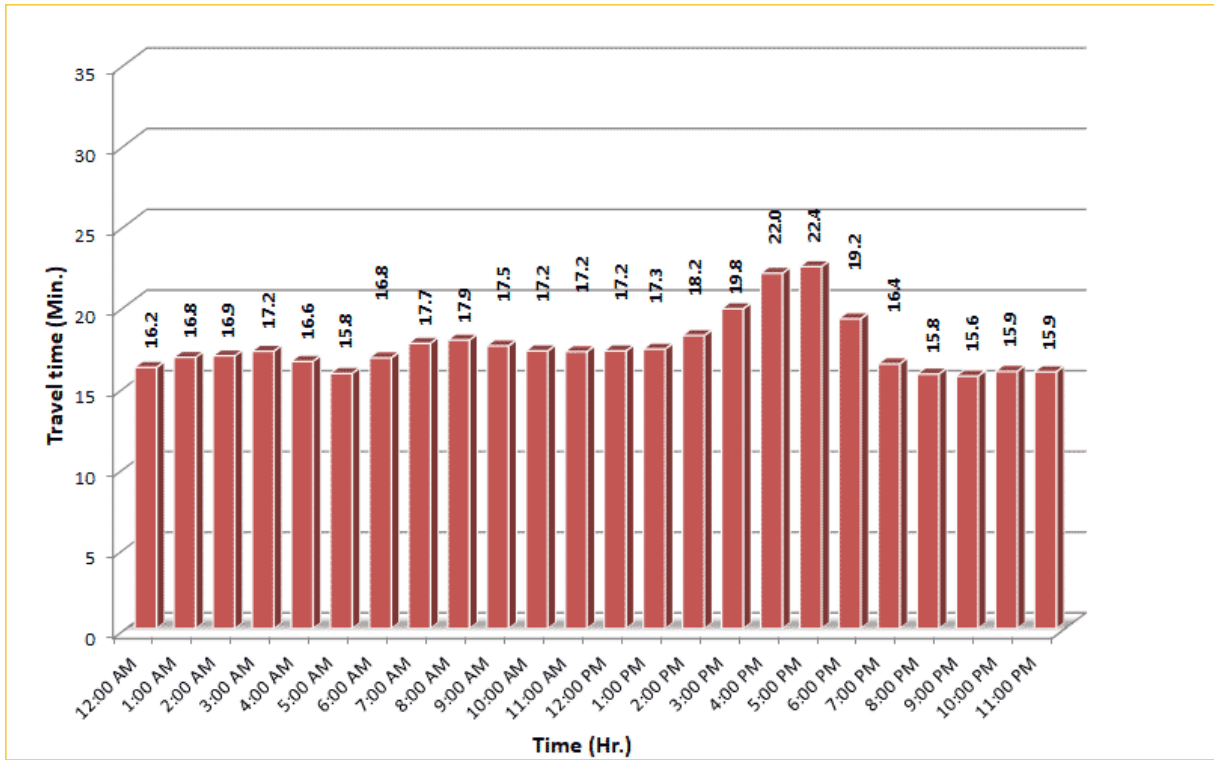
* Twelve-month weekday average from February 1st, 2020 to January 31st, 2021.

** Data obtained from Regional Integrated Transportation System (RITIS), Probe Data Analytics Suite. Excludes express lanes.


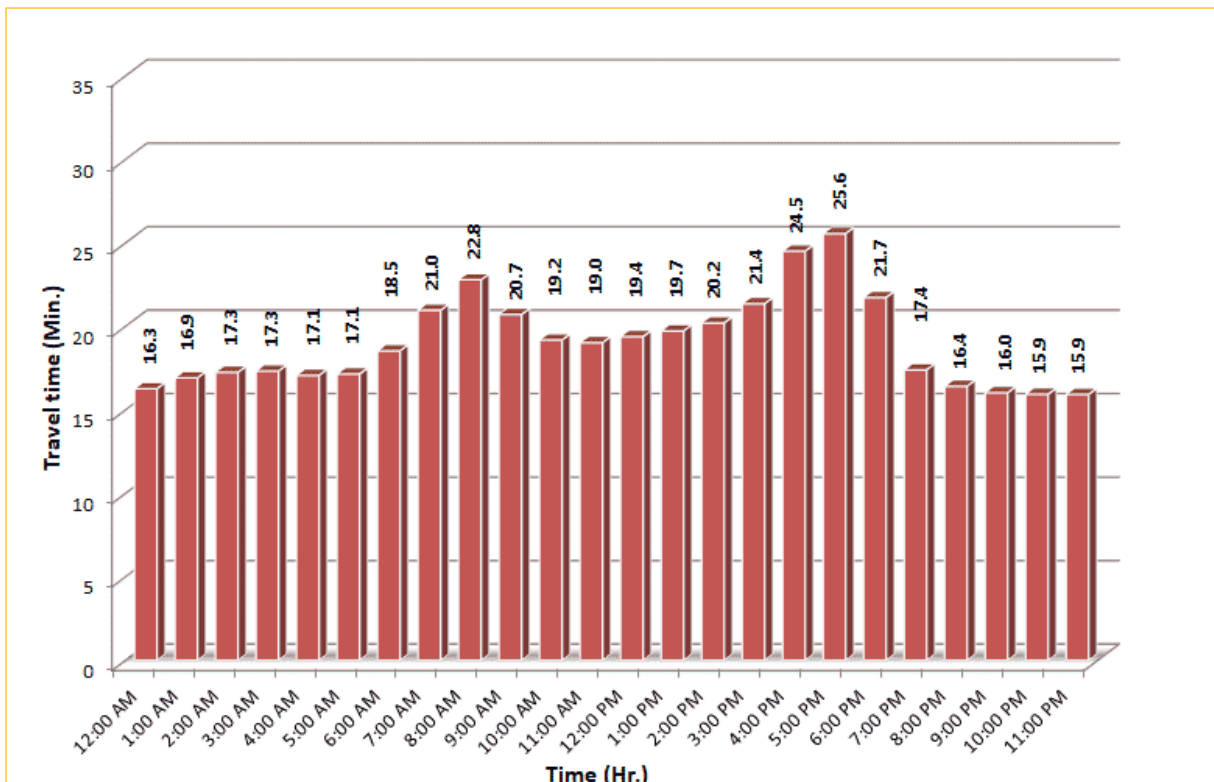
TRAVEL TIME RELIABILITY REPORT

Weekdays Travel Times by Time of Day*

SR 826 Northbound: 16.6 Miles**
 From: US-1
 To: North of NW 154 Street

SR 826 Southbound: 16.6 Miles**
 From: North of NW 154 Street
 To: US-1

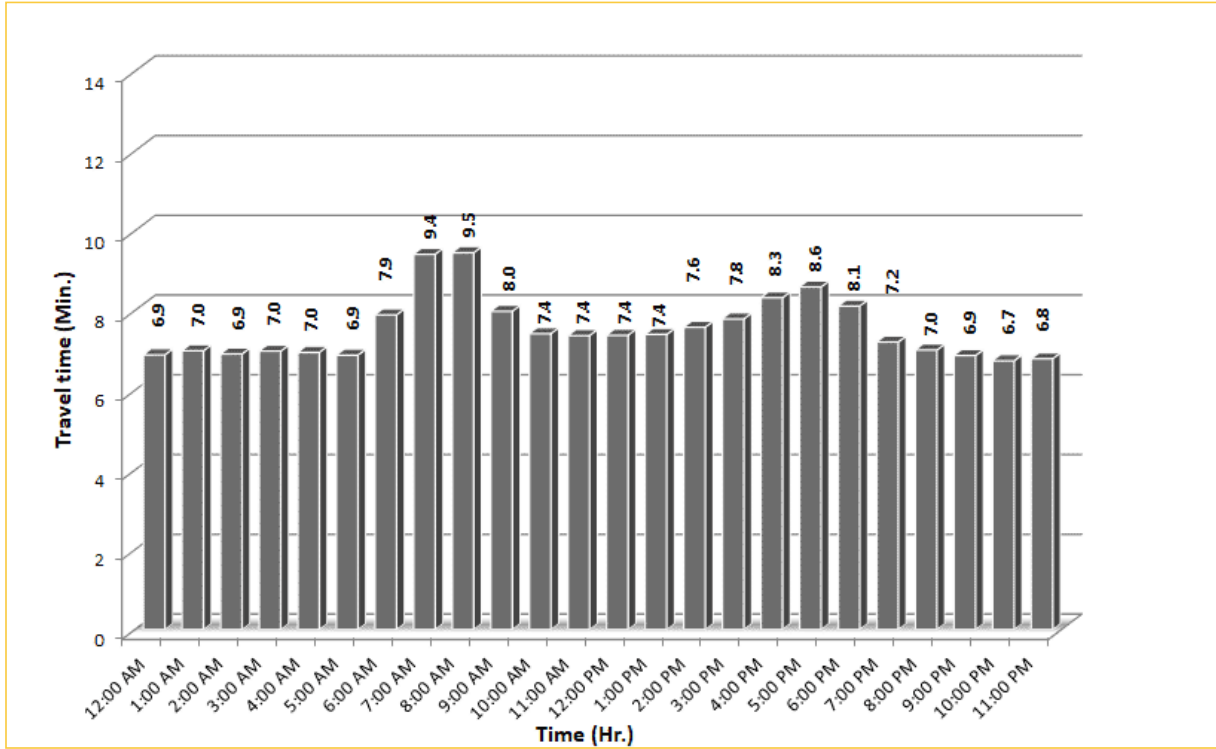
* Twelve-month weekday average from February 1st, 2020 to January 31st, 2021.

** Data obtained from Regional Integrated Transportation System (RITIS), Probe Data Analytics Suite. Excludes express lanes.

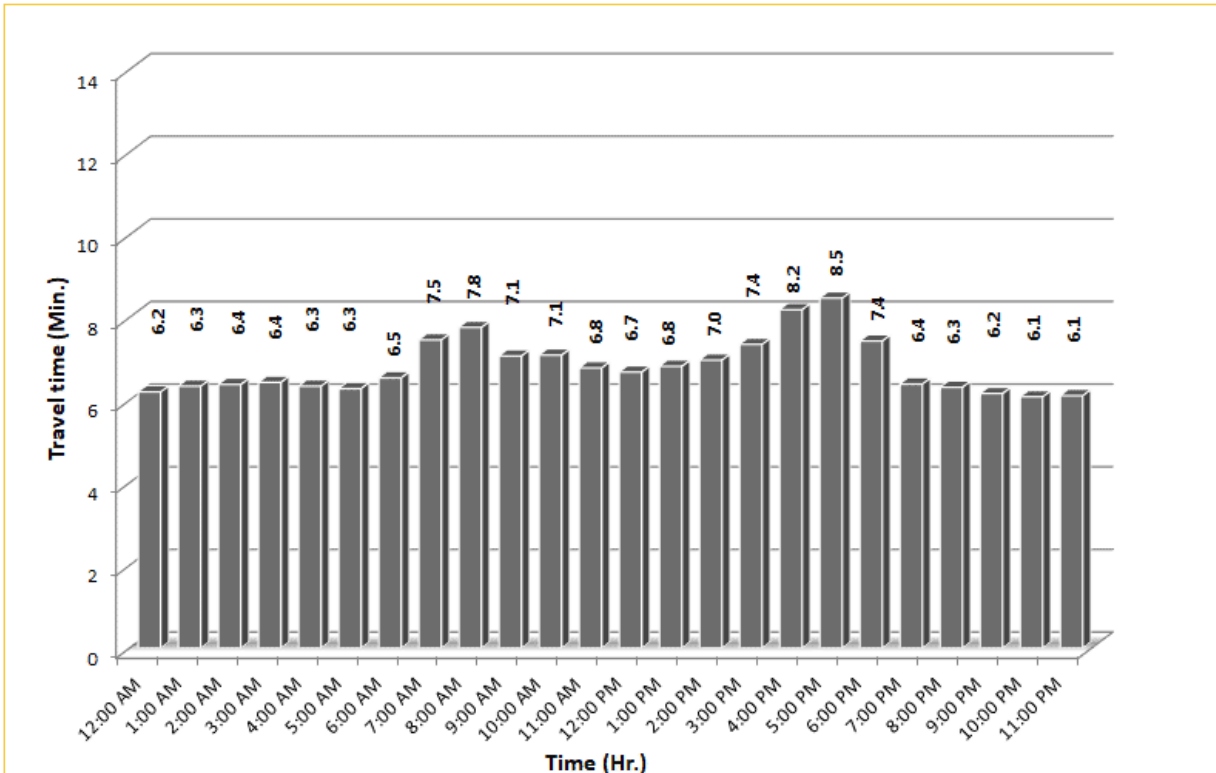
TRAVEL TIME RELIABILITY REPORT

Weekdays Travel Times by Time of Day*

SR 826 Eastbound: 7.1 Miles**
 From: West of NW 67 Avenue
 To: I-95

SR 826 Westbound: 7.1 Miles**
 From: I-95
 To: West of NW 67 Avenue

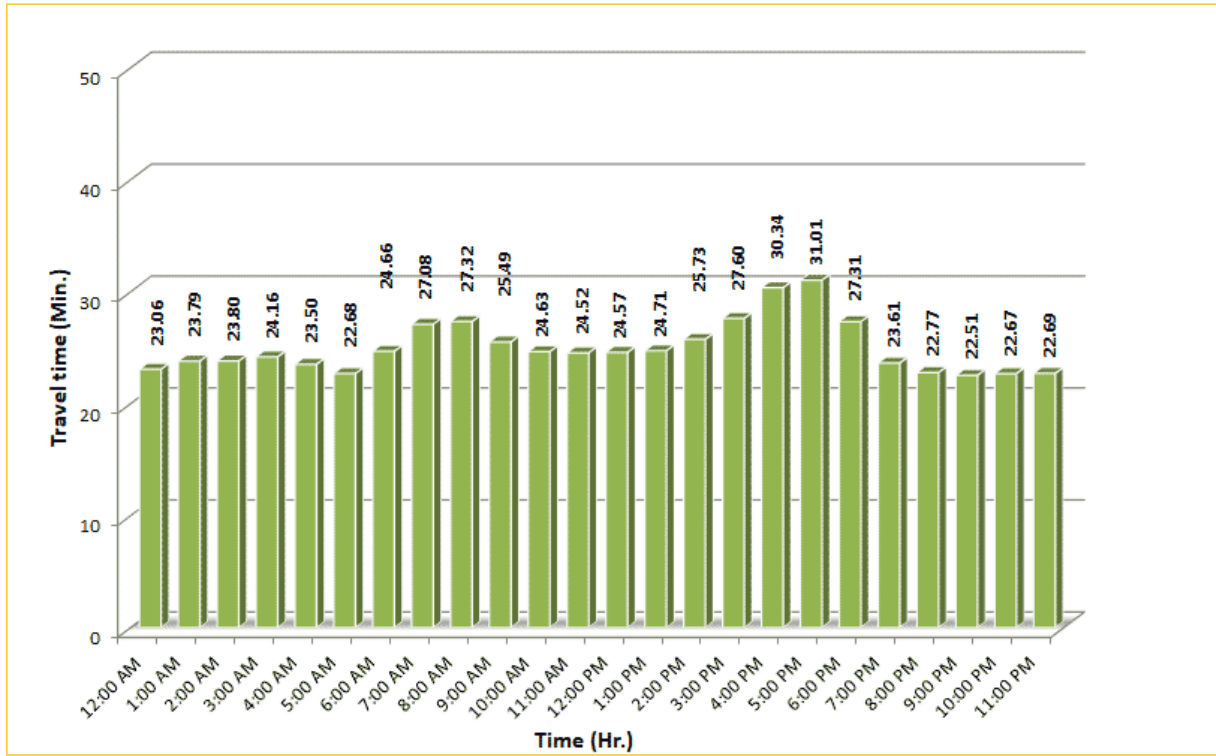
* Twelve-month weekday average from February 1st, 2020 to January 31st, 2021.

** Data obtained from Regional Integrated Transportation System (RITIS), Probe Data Analytics Suite.

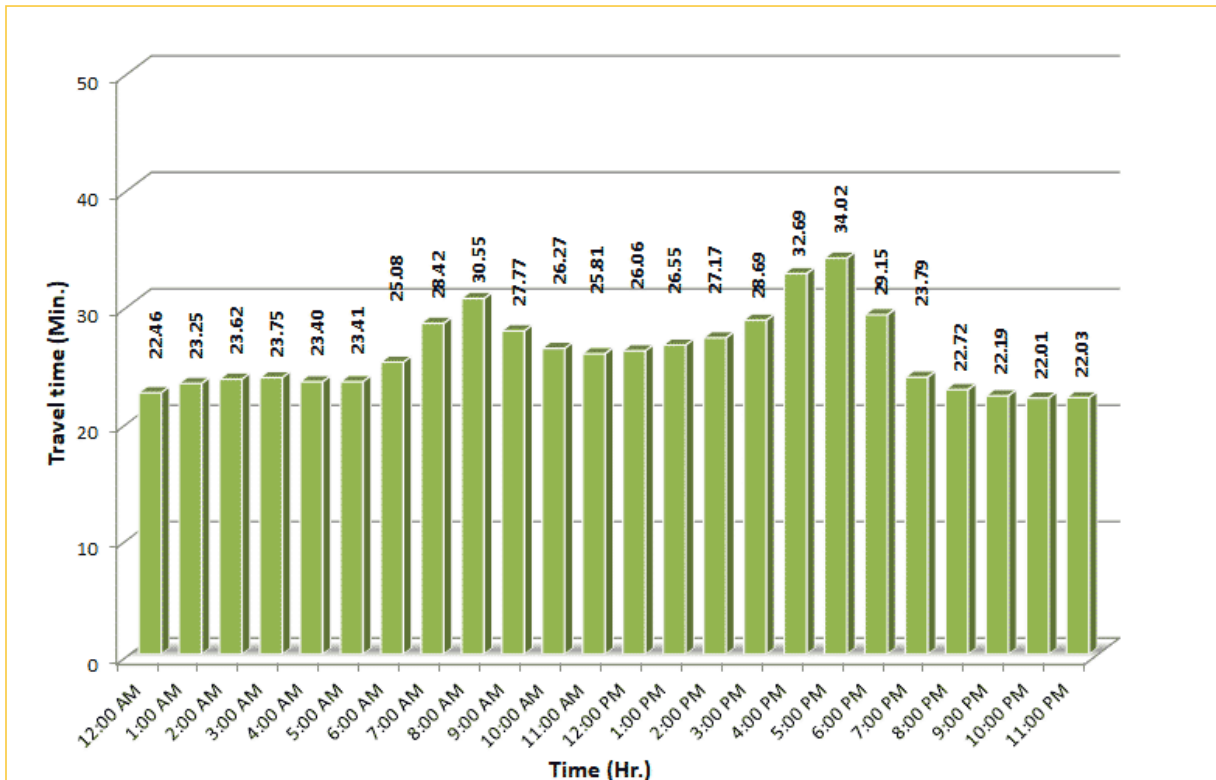
TRAVEL TIME RELIABILITY REPORT

Weekdays Travel Times by Time of Day*

SR 826 Northbound/Eastbound : 24.2 Miles**
 From: US-1
 To: I-95



SR 826 Southbound/Westbound: 24.2 Miles**
 From: I-95
 To: US-1



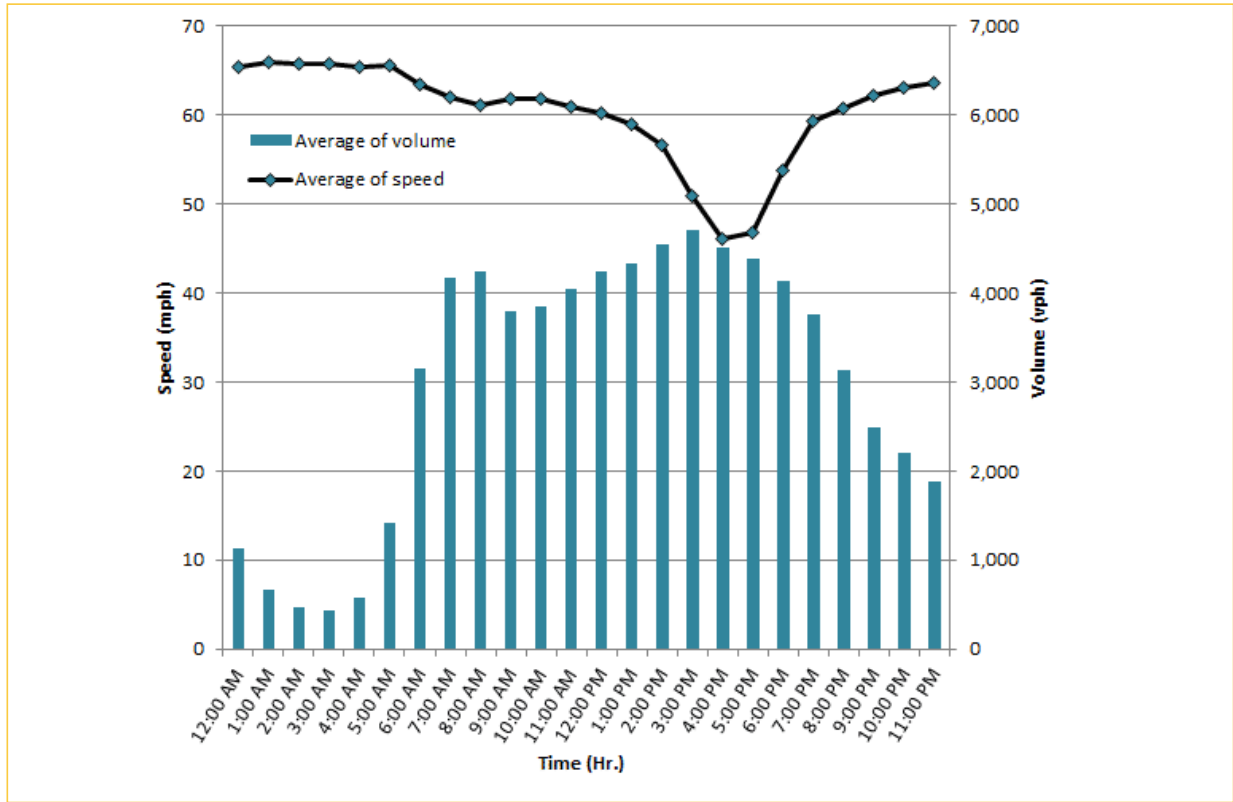
* Twelve-month weekday average from February 1st, 2020 to January 31st, 2021.

** Data obtained from Regional Integrated Transportation System (RITIS), Probe Data Analytics Suite. Excludes express lanes.

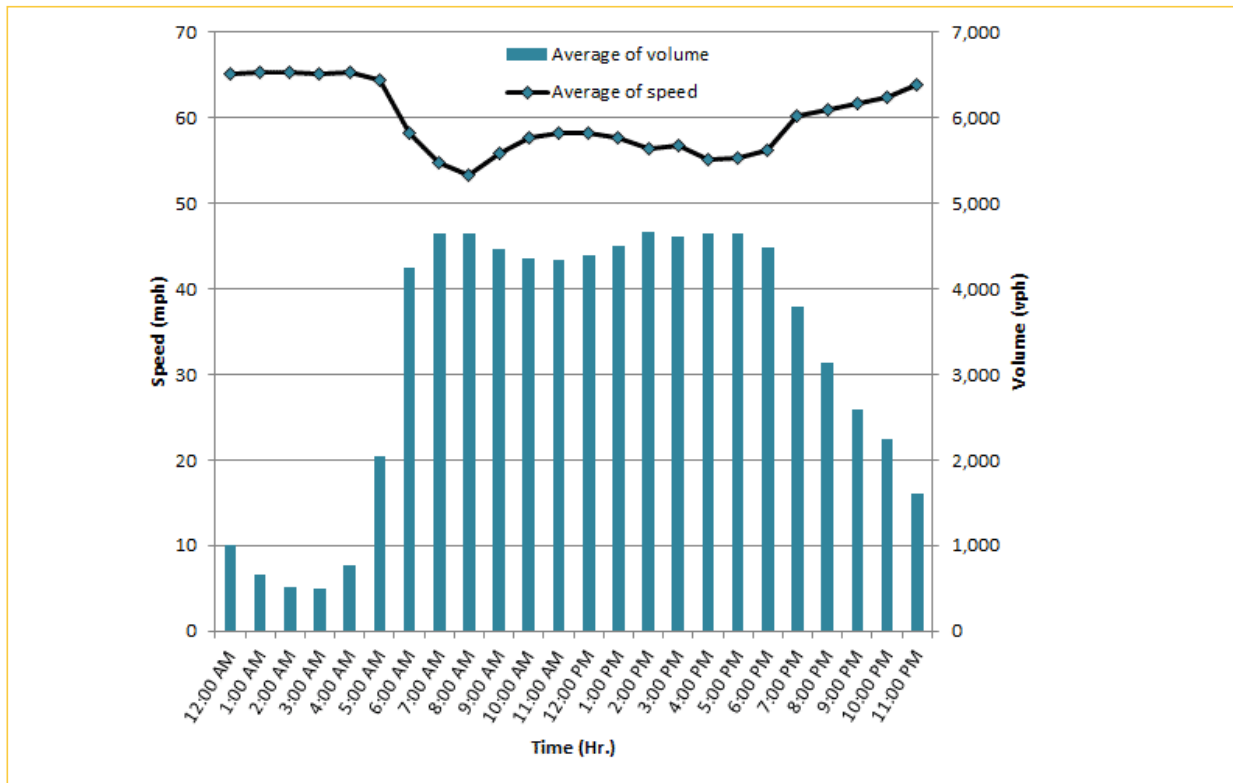
TRAVEL TIME RELIABILITY REPORT

Weekdays Speeds and Volumes by Time of Day*

I-95 Northbound: 17.3 Miles**
 From: US-1
 To: Miami-Dade / Broward County Line

I-95 Southbound: 17.3 Miles**
 From: Miami-Dade / Broward County Line
 To: US-1

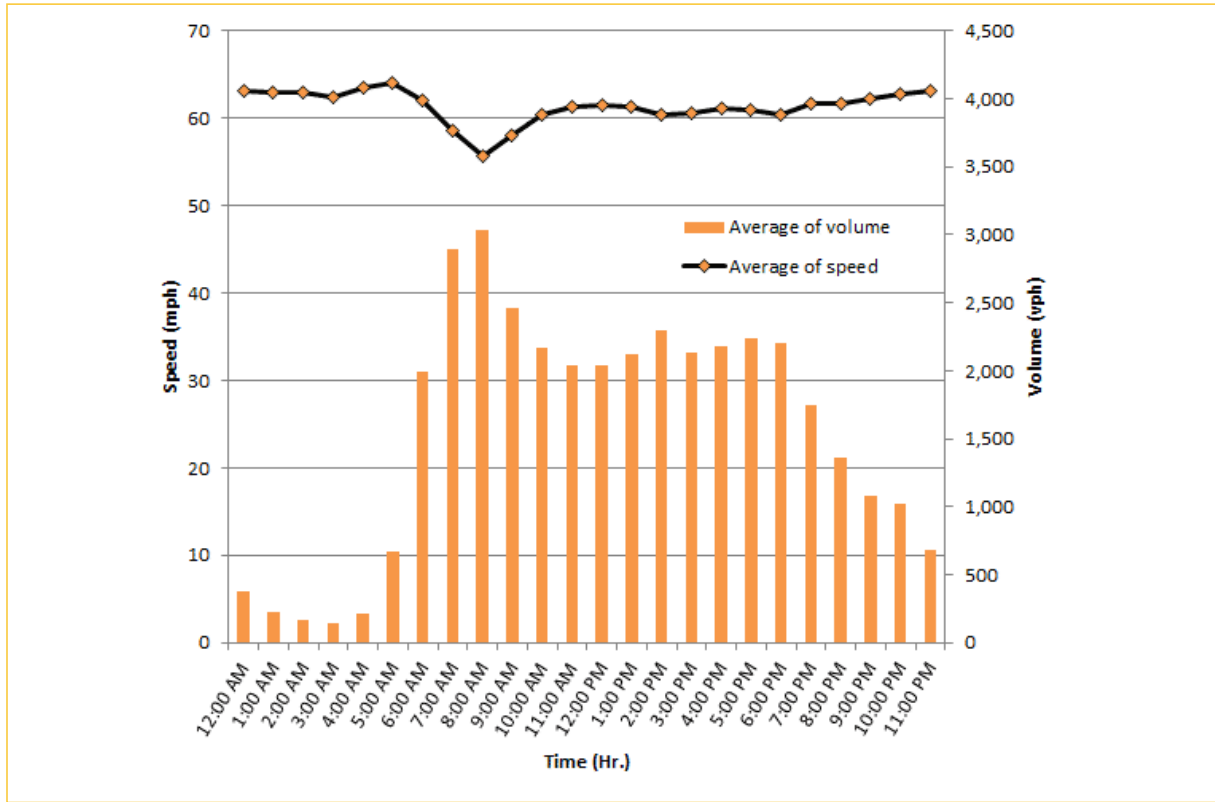
* Twelve-month weekday average from February 1st, 2020 to January 31st, 2021.

** Data obtained from Regional Integrated Transportation System (RITIS). Excludes express lanes.

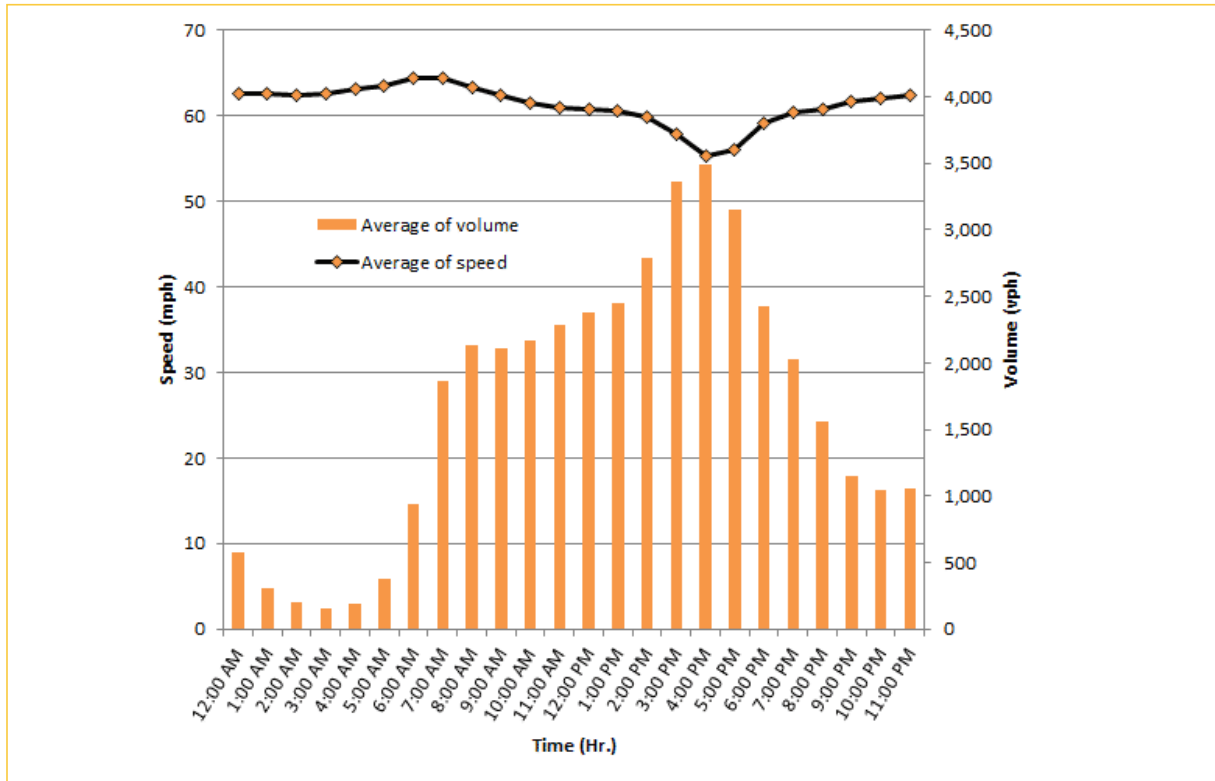
TRAVEL TIME RELIABILITY REPORT

Weekdays Speeds and Volumes by Time of Day*

I-195 Eastbound: 4.9 Miles**
 From: West of North Miami Avenue
 To: West of Alton Road

I-195 Westbound: 4.9 Miles**
 From: West of Alton Road
 To: West of North Miami Avenue


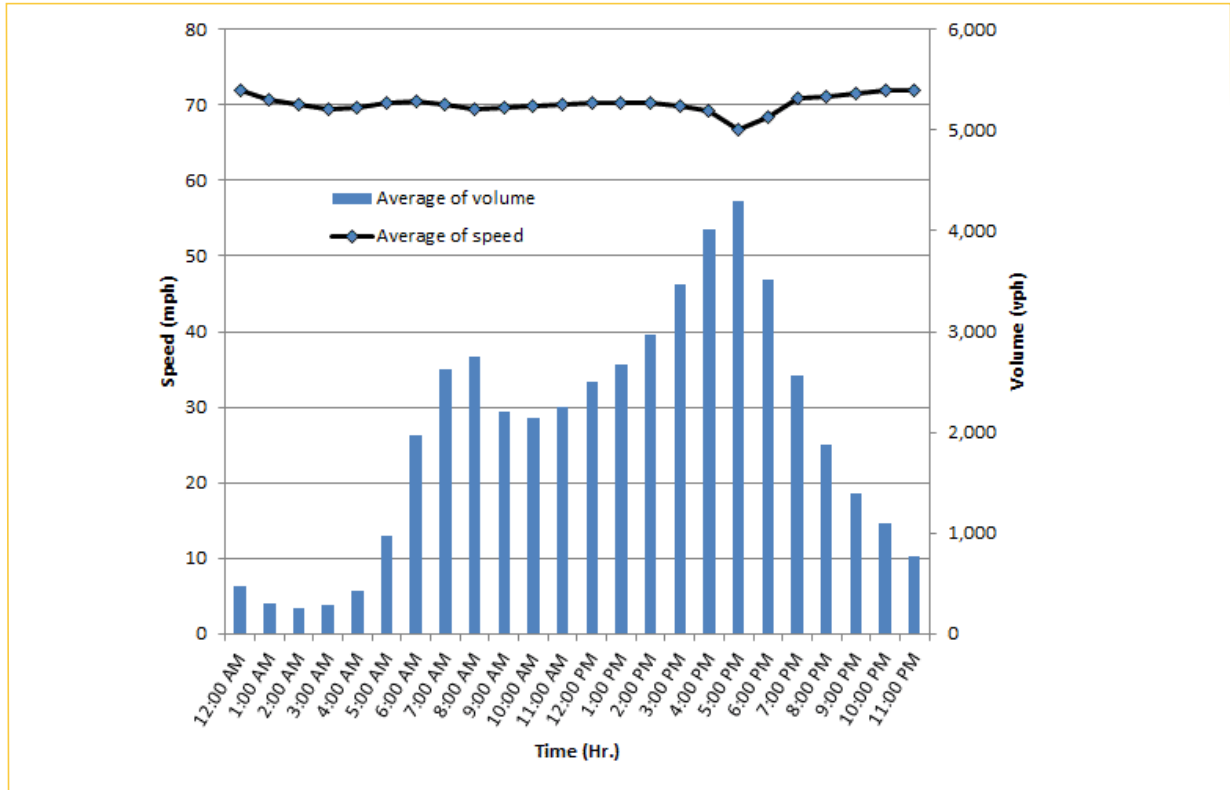
* Twelve-month weekday average from February 1st, 2020 to January 31st, 2021.

** Data obtained from Regional Integrated Transportation System (RITIS).

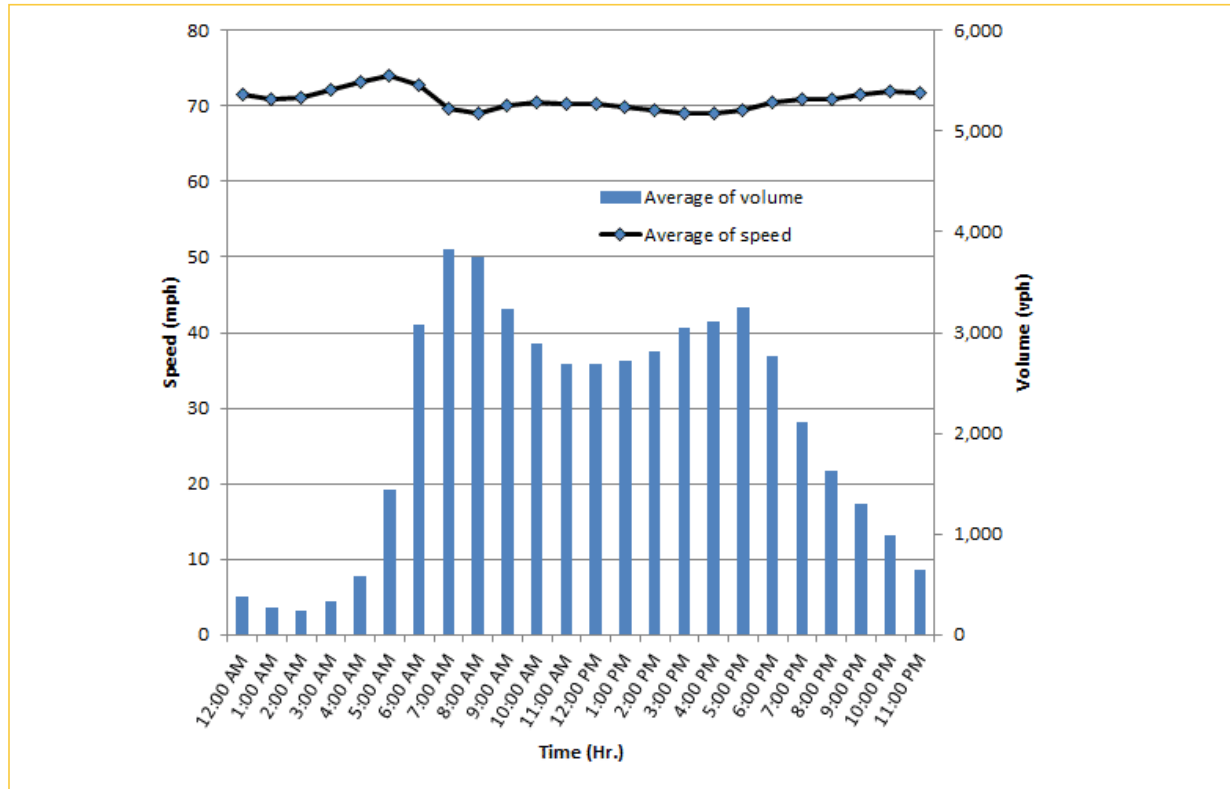
TRAVEL TIME RELIABILITY REPORT

Weekdays Speeds and Volumes by Time of Day*

I-75 Northbound: 5.4 Miles **
 From: West of SR 826
 To: North of Florida's Turnpike

I-75 Southbound: 5.4 Miles **
 From: North of Florida's Turnpike
 To: West of SR 826

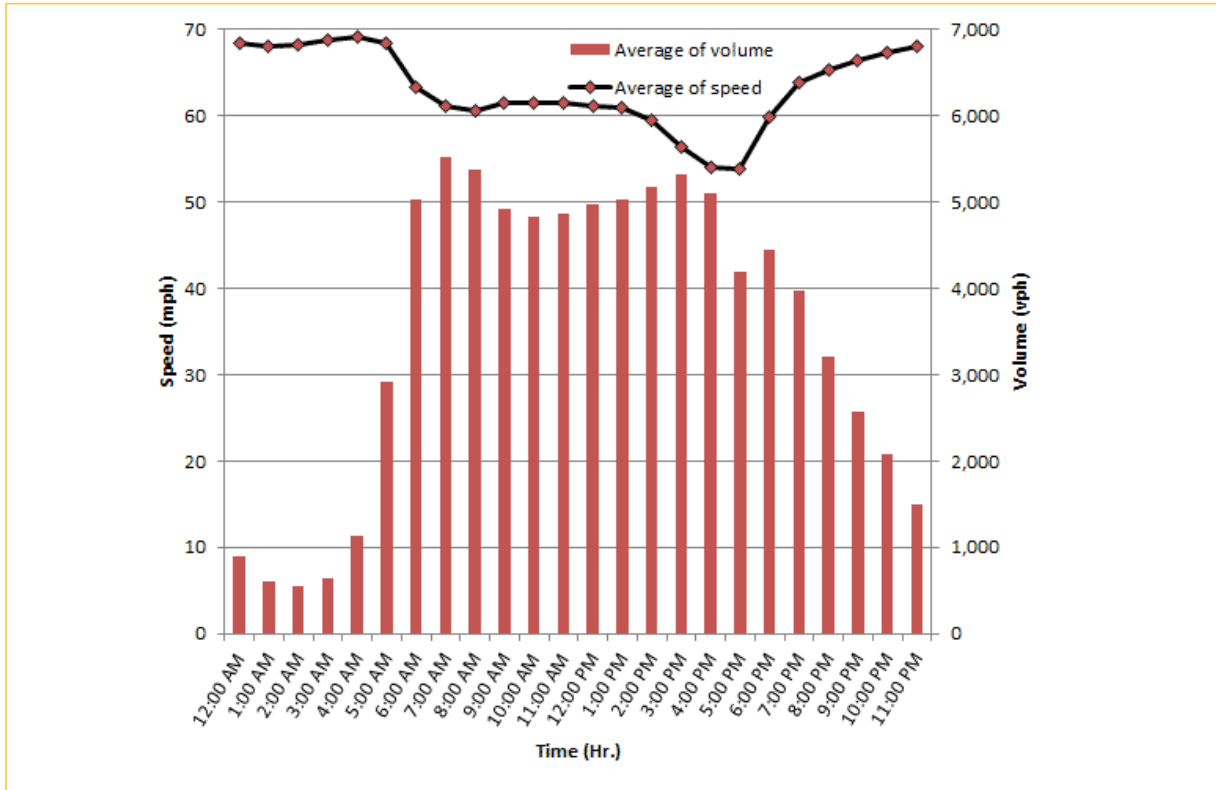
* Twelve-month weekday average from February 1st, 2020 to January 31st, 2021.

** Data obtained from Regional Integrated Transportation System (RITIS). Excludes express lanes.

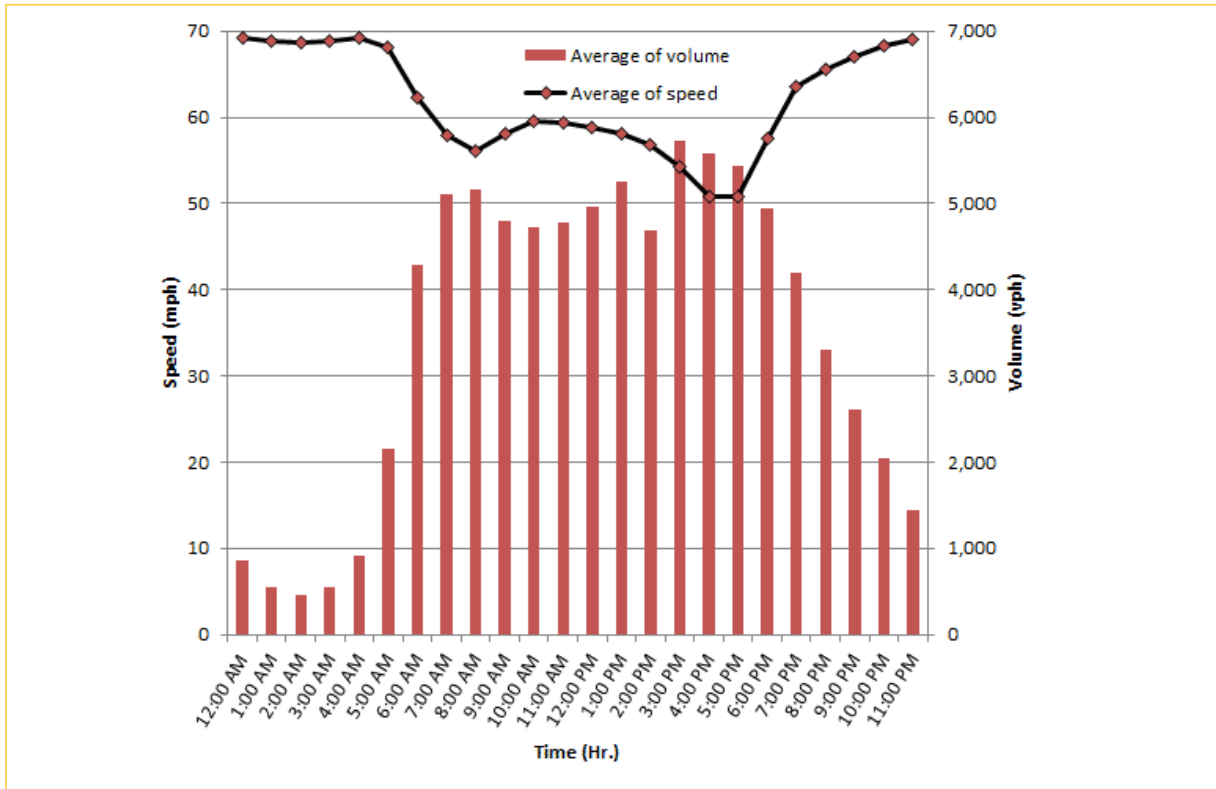
TRAVEL TIME RELIABILITY REPORT

Weekdays Speeds and Volumes by Time of Day*

SR 826 Northbound: 16.6 Miles**
 From: US-1
 To: North of NW 154 Street



SR 826 Southbound: 16.6 Miles**
 From: North of NW 154 Street
 To: US-1



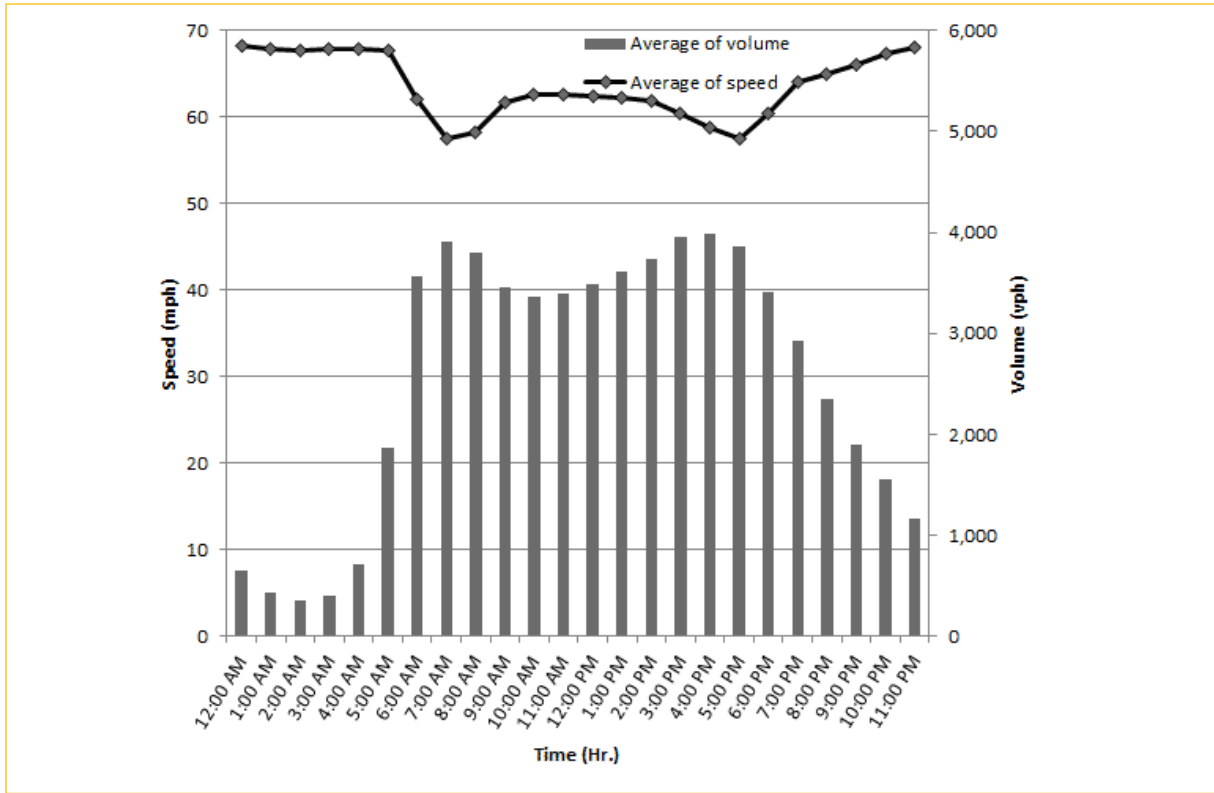
* Twelve-month weekday average from February 1st, 2020 to January 31st, 2021.

** Data obtained from Regional Integrated Transportation System (RITIS). Excludes express lanes.

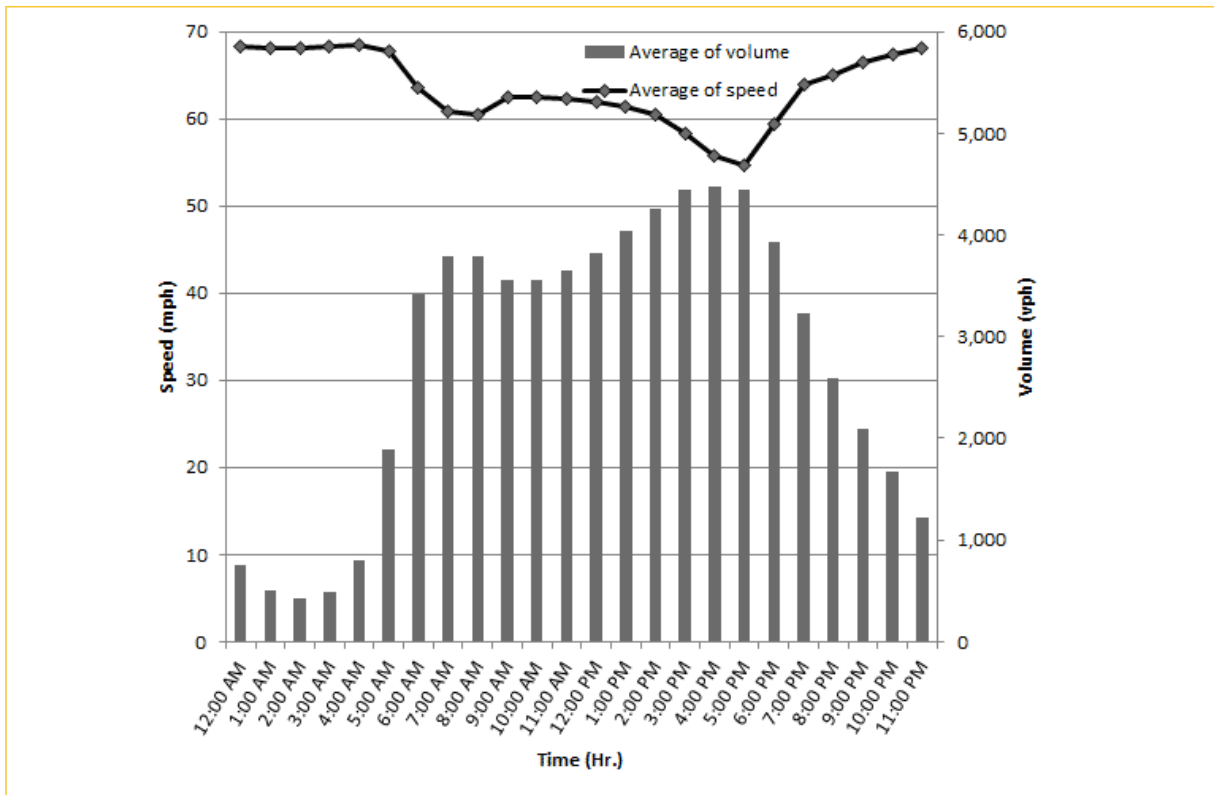
TRAVEL TIME RELIABILITY REPORT

Weekdays Speeds and Volumes by Time of Day*

SR 826 Eastbound: 7.1 Miles**
 From: West of NW 67 Avenue
 To: I-95

SR 826 Westbound: 7.1 Miles**
 From: I-95
 To: West of NW 67 Avenue

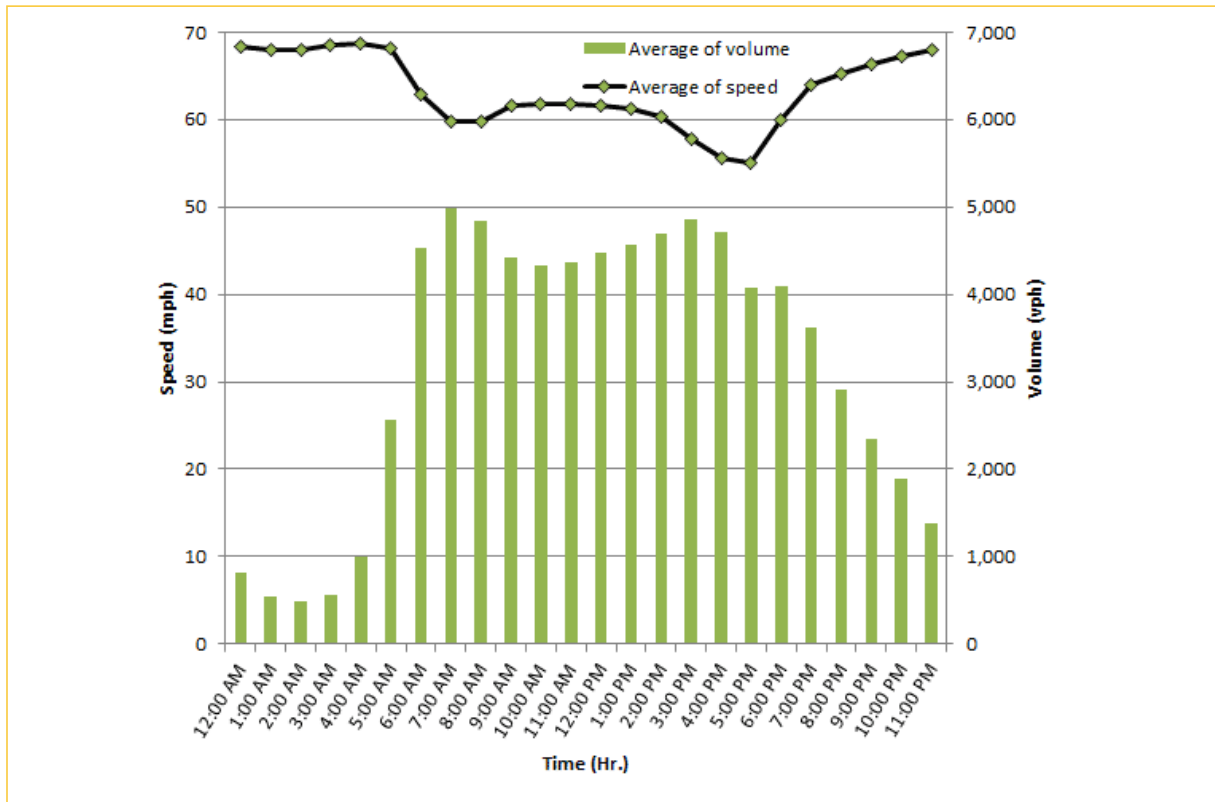
* Twelve-month weekday average from February 1st, 2020 to January 31st, 2021.

** Data obtained from Regional Integrated Transportation System (RITIS).

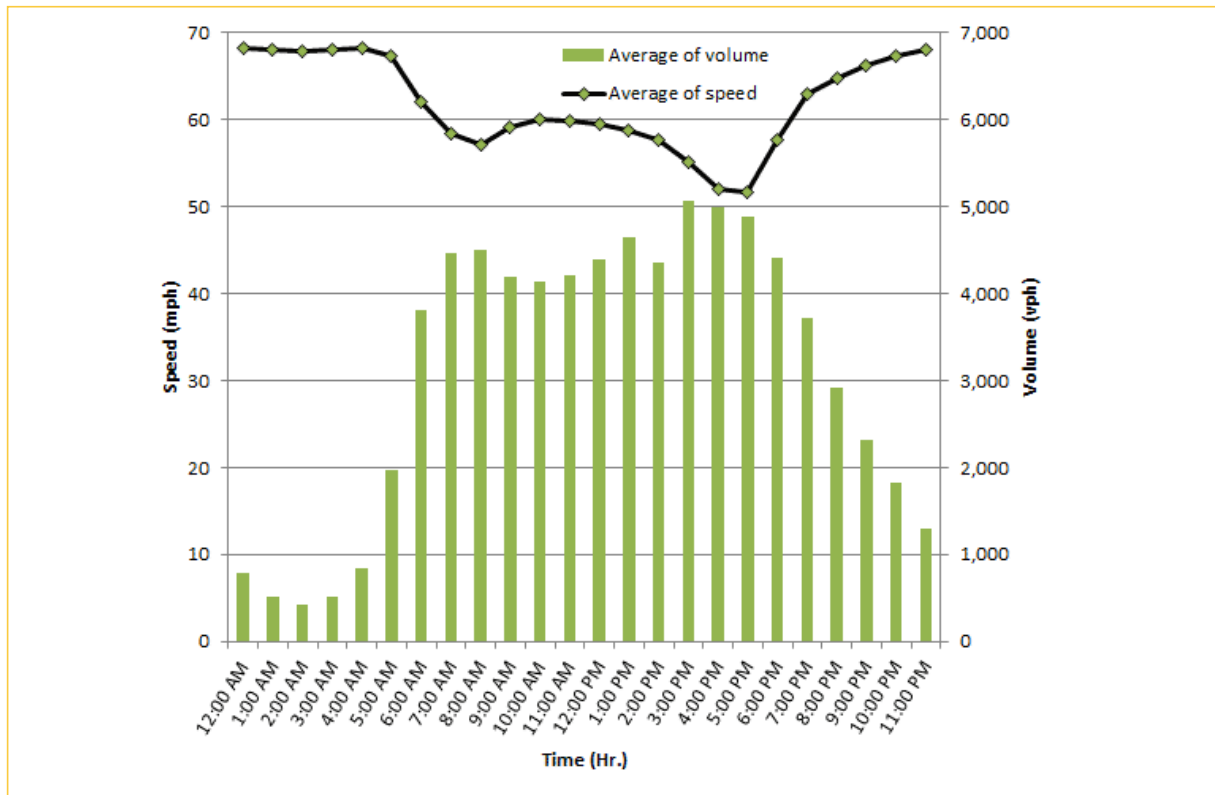
TRAVEL TIME RELIABILITY REPORT

Weekdays Speeds and Volumes by Time of Day*

SR 826 Northbound/Eastbound : 24.2 Miles**
From: US-1
To: I-95



SR 826 Southbound/Westbound: 24.2 Miles**
From: I-95
To: US-1



* Twelve-month weekday average from February 1st, 2020 to January 31st, 2021.

** Data obtained from Regional Integrated Transportation System (RITIS). Excludes express lanes.