

## TRAVEL TIME RELIABILITY REPORT

### Travel Time Index by Roadway\*

Time	I-95**		I-195**		I-75**		SR 826**					
	NB	SB	EB	WB	NB	SB	NB	EB	NE	SB	WB	SW
0:00	0.88	0.85	0.82	0.94	0.96	0.96	0.80	0.82	0.81	0.77	0.82	0.79
1:00	0.84	0.84	0.80	0.94	0.97	0.98	0.81	0.82	0.81	0.79	0.83	0.80
2:00	0.84	0.84	0.81	0.96	0.98	0.98	0.83	0.84	0.83	0.80	0.83	0.81
3:00	0.85	0.84	0.83	0.98	1.00	0.97	0.82	0.83	0.83	0.81	0.85	0.82
4:00	0.85	0.84	0.82	0.97	1.01	0.96	0.81	0.83	0.82	0.81	0.85	0.82
5:00	0.85	0.85	0.79	0.95	1.00	0.93	0.80	0.83	0.81	0.81	0.84	0.82
6:00	0.93	1.04	0.84	0.93	1.01	0.98	0.87	0.98	0.91	0.92	0.97	0.94
7:00	1.04	1.42	0.98	0.92	1.03	1.12	0.98	1.34	1.09	1.16	1.13	1.15
8:00	1.07	1.72	1.36	0.95	1.04	1.26	1.04	1.48	1.17	1.35	1.24	1.32
9:00	0.97	1.51	1.38	0.96	1.01	1.05	0.97	1.13	1.02	1.16	0.98	1.11
10:00	0.96	1.32	1.02	0.98	1.01	1.00	0.93	0.98	0.95	1.03	0.92	1.00
11:00	0.99	1.27	0.94	1.00	1.01	0.99	0.94	0.97	0.95	1.03	0.92	1.00
12:00	1.05	1.24	0.95	1.00	1.00	1.00	0.94	0.97	0.95	1.04	0.93	1.01
13:00	1.14	1.29	0.96	1.01	1.00	1.00	0.96	0.99	0.97	1.06	0.95	1.03
14:00	1.28	1.43	1.12	1.05	1.01	1.02	1.03	1.04	1.03	1.11	1.00	1.08
15:00	1.68	1.43	1.25	1.26	1.03	1.02	1.17	1.07	1.14	1.22	1.11	1.19
16:00	2.04	1.49	1.06	1.67	1.05	1.03	1.39	1.12	1.31	1.37	1.21	1.33
17:00	2.10	1.55	1.01	1.70	1.30	1.03	1.51	1.21	1.42	1.52	1.29	1.46
18:00	1.66	1.45	0.97	1.27	1.24	1.01	1.20	1.12	1.18	1.25	1.15	1.23
19:00	1.12	1.15	0.92	1.05	1.00	0.97	0.91	0.93	0.92	0.93	0.92	0.93
20:00	0.99	0.98	0.88	1.00	0.98	0.96	0.86	0.88	0.87	0.84	0.89	0.85
21:00	0.97	0.97	0.85	0.97	0.97	0.96	0.83	0.86	0.84	0.81	0.87	0.83
22:00	1.00	0.96	0.89	0.97	0.96	0.96	0.82	0.83	0.82	0.79	0.85	0.81
23:00	0.99	0.92	0.87	0.97	0.95	0.95	0.81	0.82	0.81	0.79	0.84	0.80
FFS***	66 mph	66 mph	62 mph	59 mph	72 mph	69 mph	65 mph	67 mph	66 mph	67 mph	66 mph	67 mph

*Maximum Travel Time Index.*

**Travel Time Index (TTI)** is a measure of average conditions that indicates how much longer, **on average**, travel times are during congestion compared to during light traffic.

**Real World Example:** A TTI of 1.60 means that for a trip that usually takes 10 minutes in light traffic, a traveler should budget for an additional 6 minutes **on average**.



\* Twelve-month weekday average from January 1st, 2021 to December 31st, 2021.

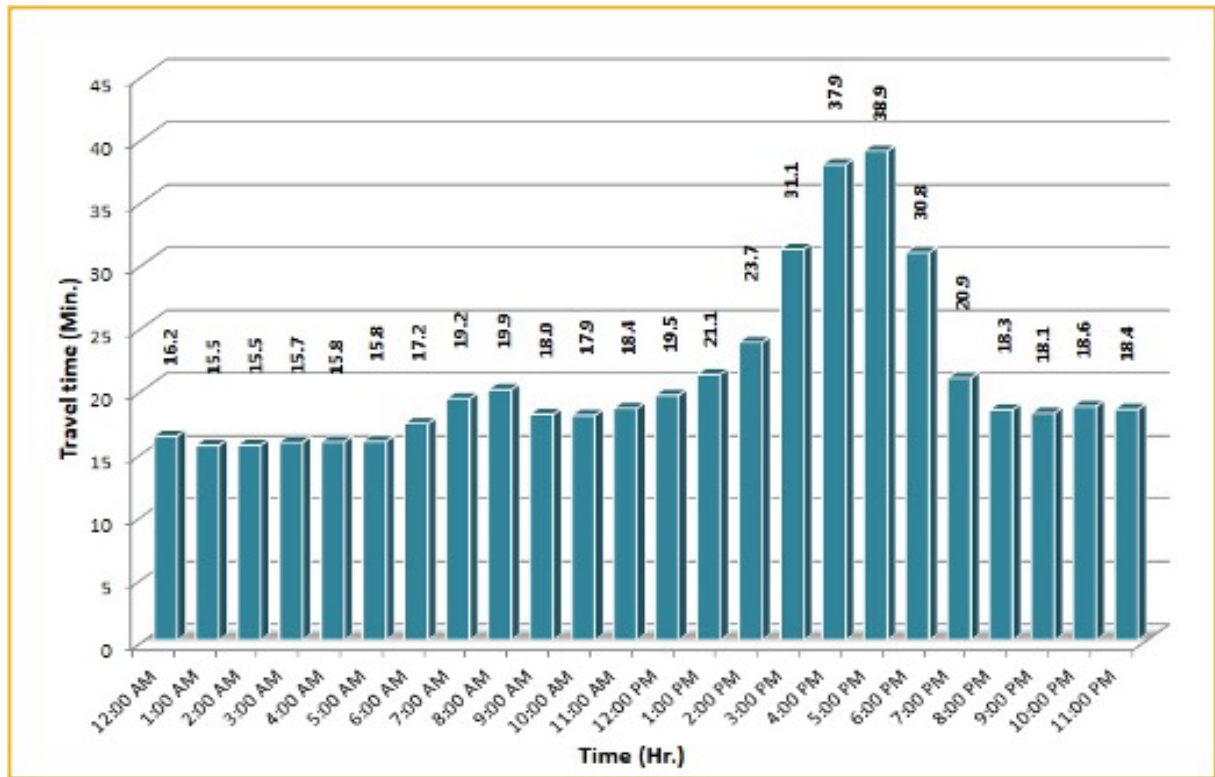
\*\* Data obtained from Regional Integrated Transportation System (RITIS), Probe Data Analytics Suite.

\*\*\* Free Flow Speed.

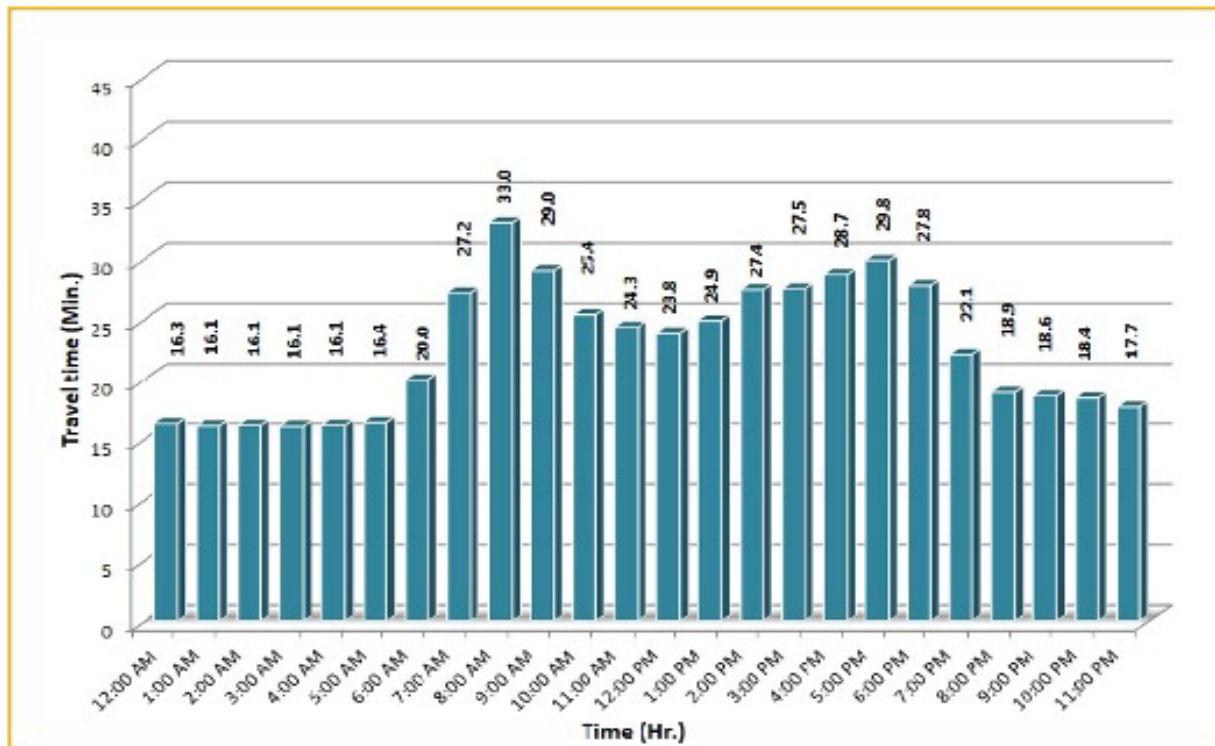
## TRAVEL TIME RELIABILITY REPORT

### Weekdays Travel Times by Time of Day\*

**I-95 Northbound: 17.3 Miles\*\***  
From: US-1  
To: Miami-Dade / Broward County Line



**I-95 Southbound: 17.3 Miles\*\***  
From: Miami-Dade / Broward County Line  
To: US-1



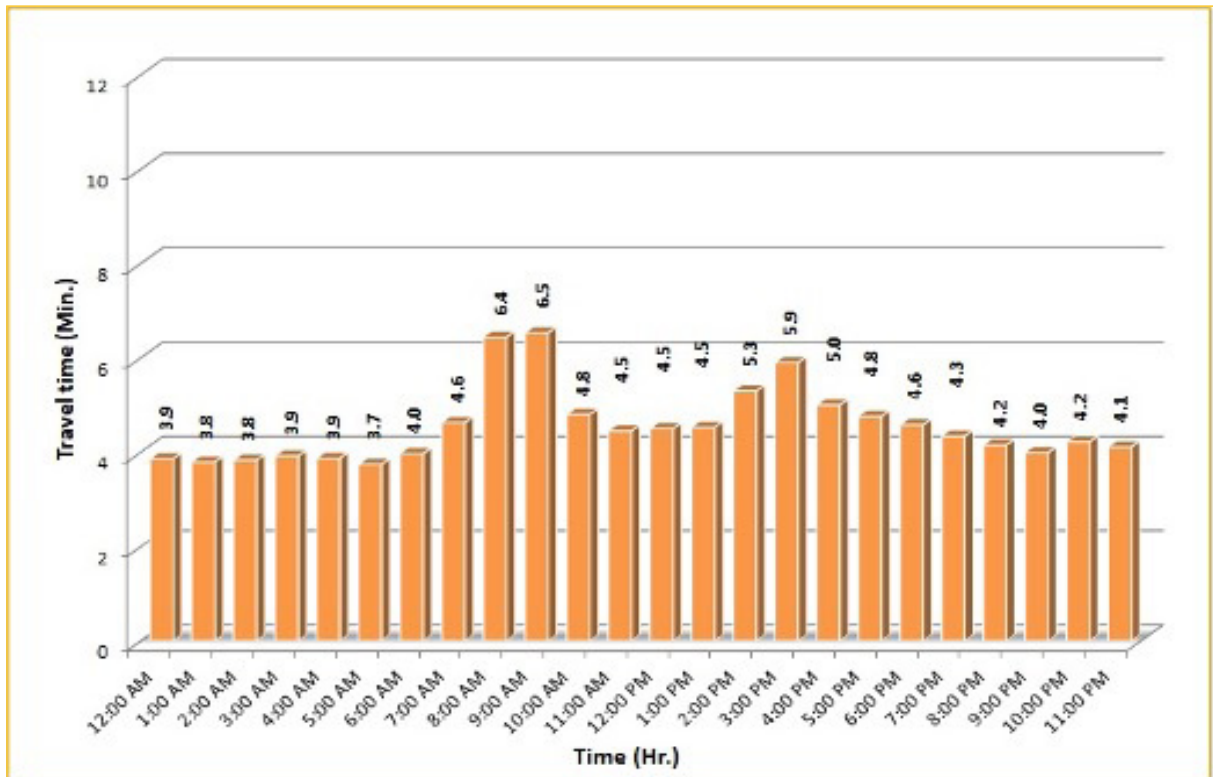
\* Twelve-month weekday average from January 1st, 2021 to December 31st, 2021.

\*\* Data obtained from Regional Integrated Transportation System (RITIS), Probe Data Analytics Suite. Excludes express lanes.

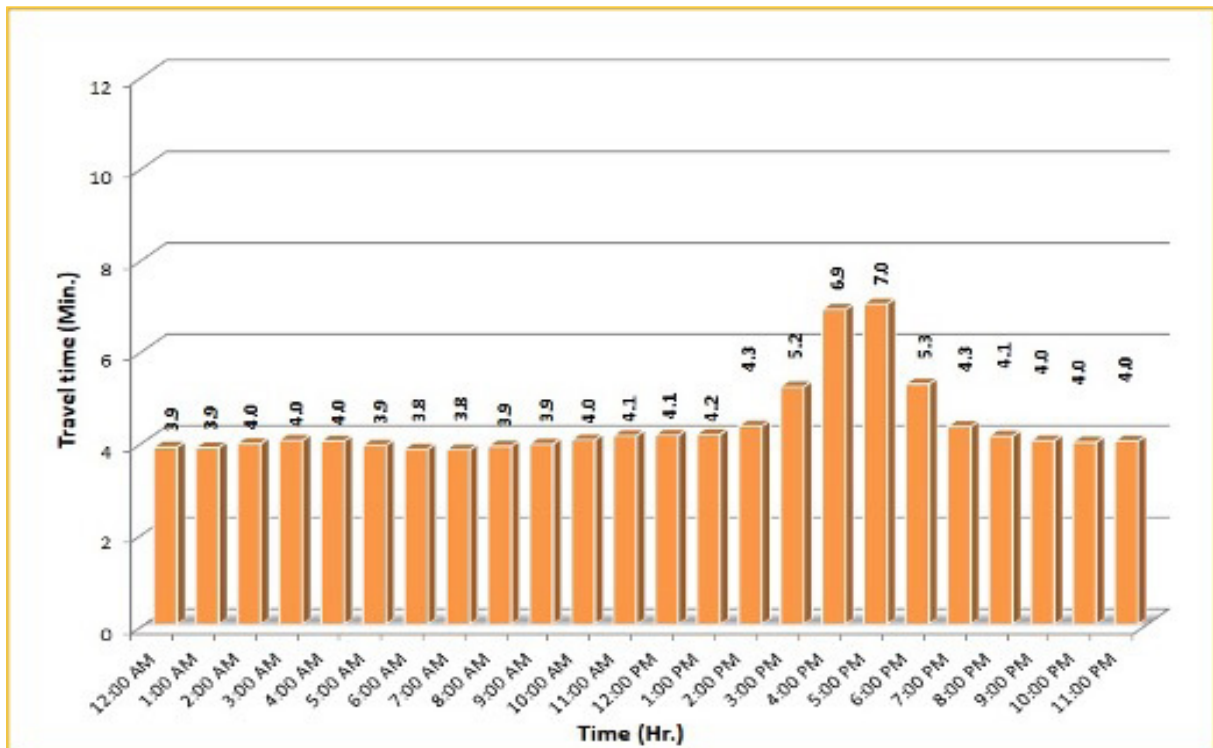
## TRAVEL TIME RELIABILITY REPORT

### Weekdays Travel Times by Time of Day\*

**I-195 Eastbound: 4.9 Miles\*\***  
From: West of North Miami Avenue  
To: West of Alton Road



**I-195 Westbound: 4.9 Miles\*\***  
From: West of Alton Road  
To: West of North Miami Avenue



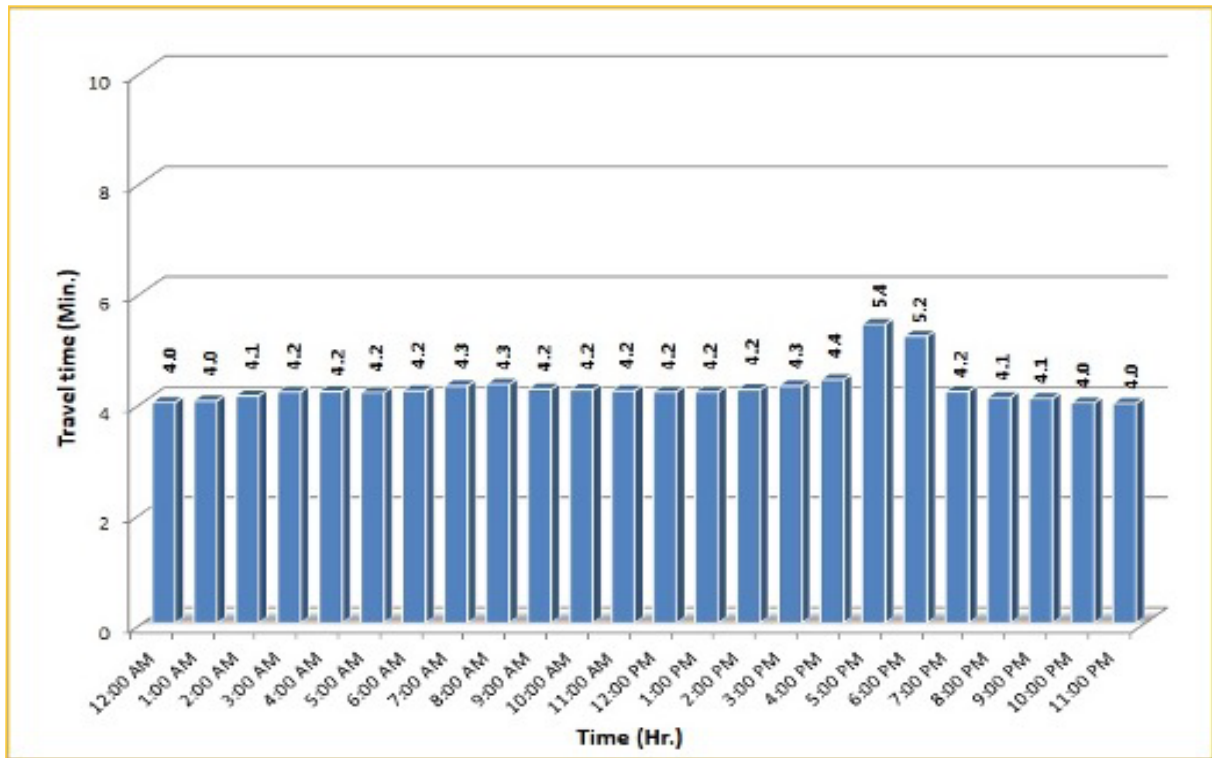
\* Twelve-month weekday average from January 1st, 2021 to December 31st, 2021.

\*\* Data obtained from Regional Integrated Transportation System (RITIS), Probe Data Analytics Suite. Excludes express lanes.

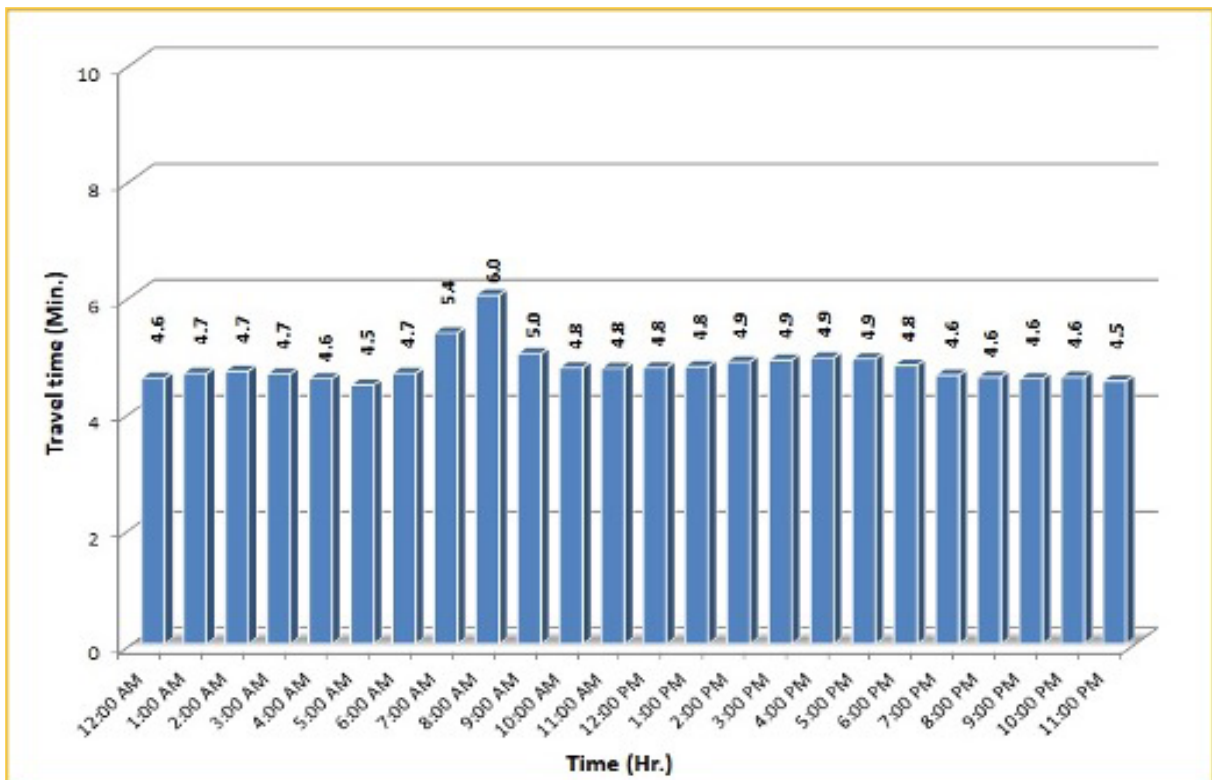
## TRAVEL TIME RELIABILITY REPORT

### Weekdays Travel Times by Time of Day\*

**I-75 Northbound: 5.4 Miles\*\***  
From: West of SR 826  
To: North of Florida's Turnpike



**I-75 Southbound: 5.4 Miles\*\***  
From: North of Florida's Turnpike  
To: West of SR 826



\* Twelve-month weekday average from January 1st, 2021 to December 31st, 2021.

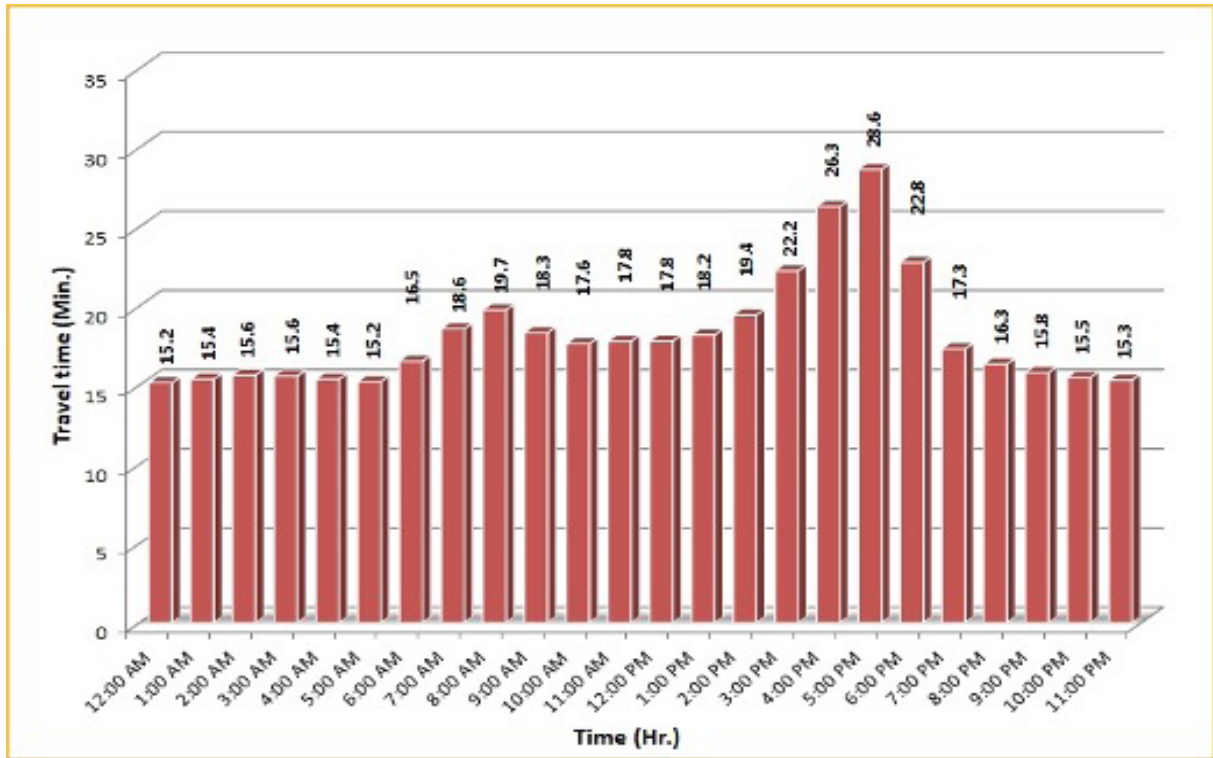
\*\* Data obtained from Regional Integrated Transportation System (RITIS), Probe Data Analytics Suite. Excludes express lanes.




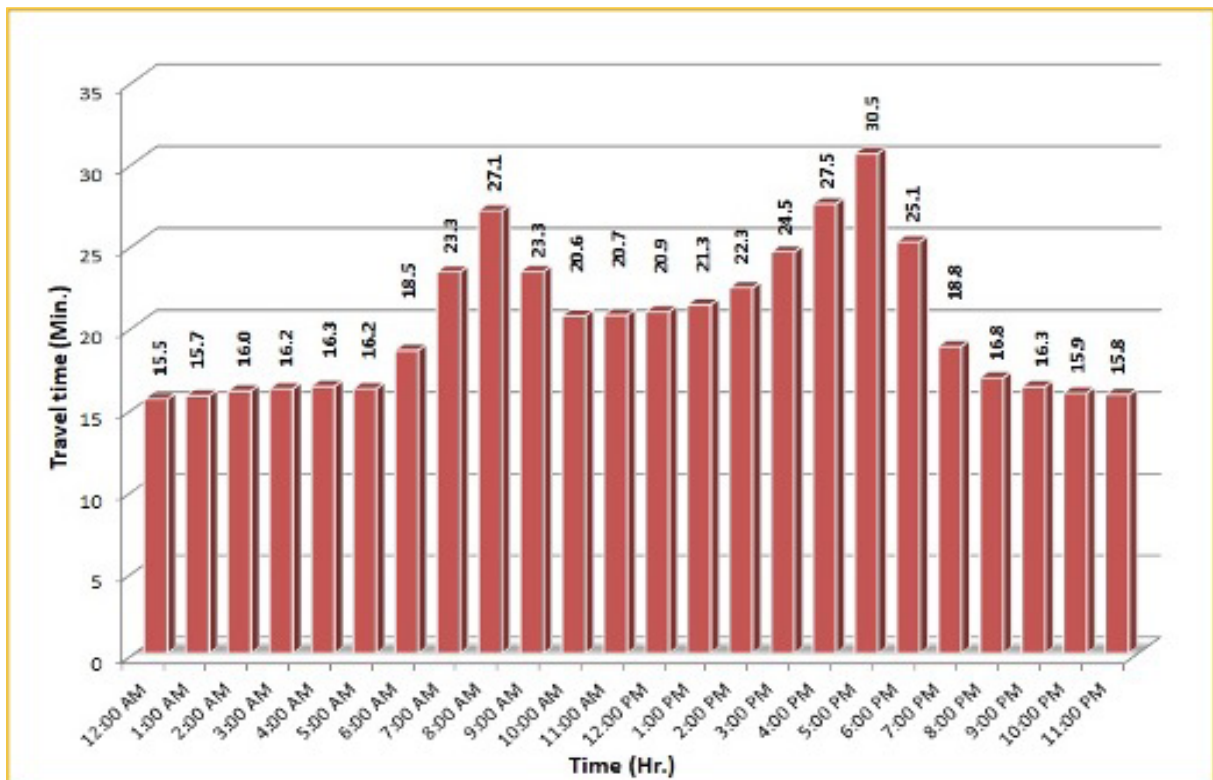
## TRAVEL TIME RELIABILITY REPORT

### Weekdays Travel Times by Time of Day\*

**SR 826 Northbound: 16.6 Miles\*\***  
From: US-1  
To: North of NW 154 Street

**SR 826 Southbound: 16.6 Miles\*\***  
From: North of NW 154 Street  
To: US-1

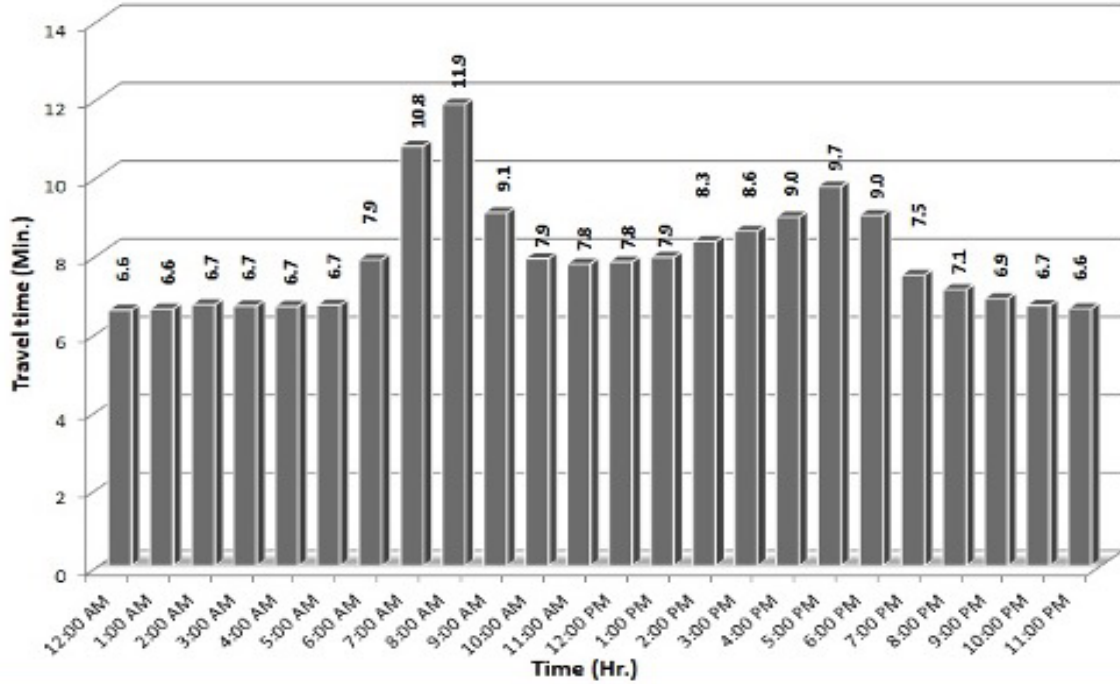
\* Twelve-month weekday average from January 1st, 2021 to December 31st, 2021.

\*\* Data obtained from Regional Integrated Transportation System (RITIS), Probe Data Analytics Suite. Excludes express lanes.

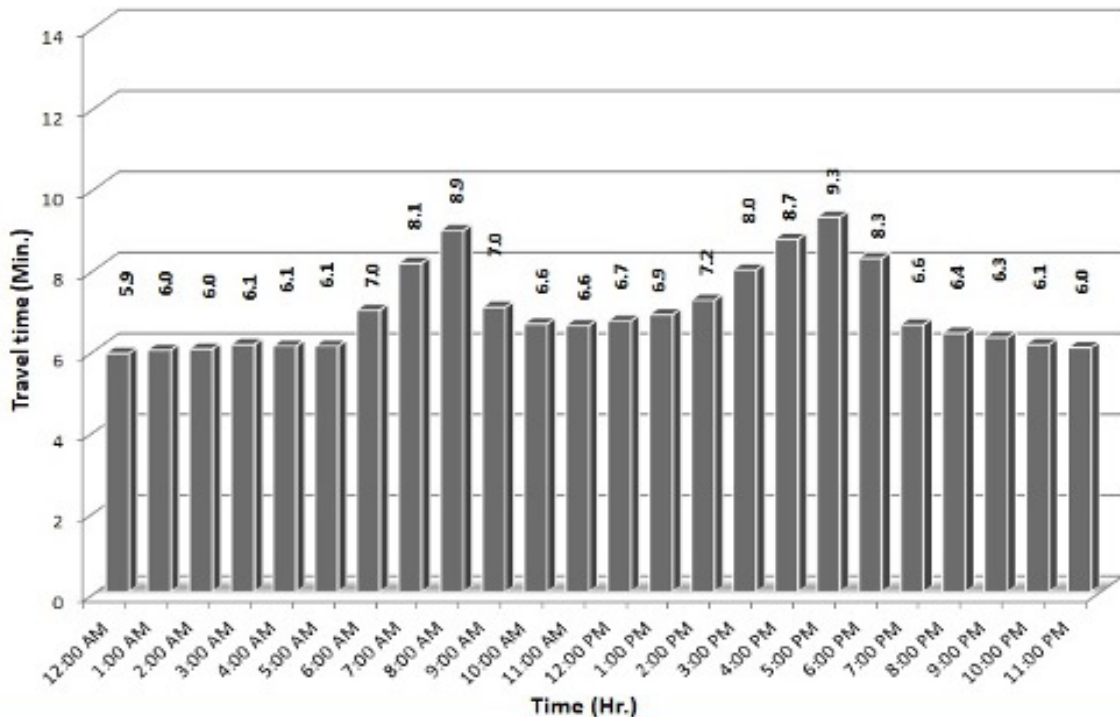
## TRAVEL TIME RELIABILITY REPORT

### Weekdays Travel Times by Time of Day\*

SR 826 Eastbound: 7.1 Miles\*\*  
From: West of NW 67 Avenue  
To: I-95

SR 826 Westbound: 7.1 Miles\*\*  
From: I-95  
To: West of NW 67 Avenue

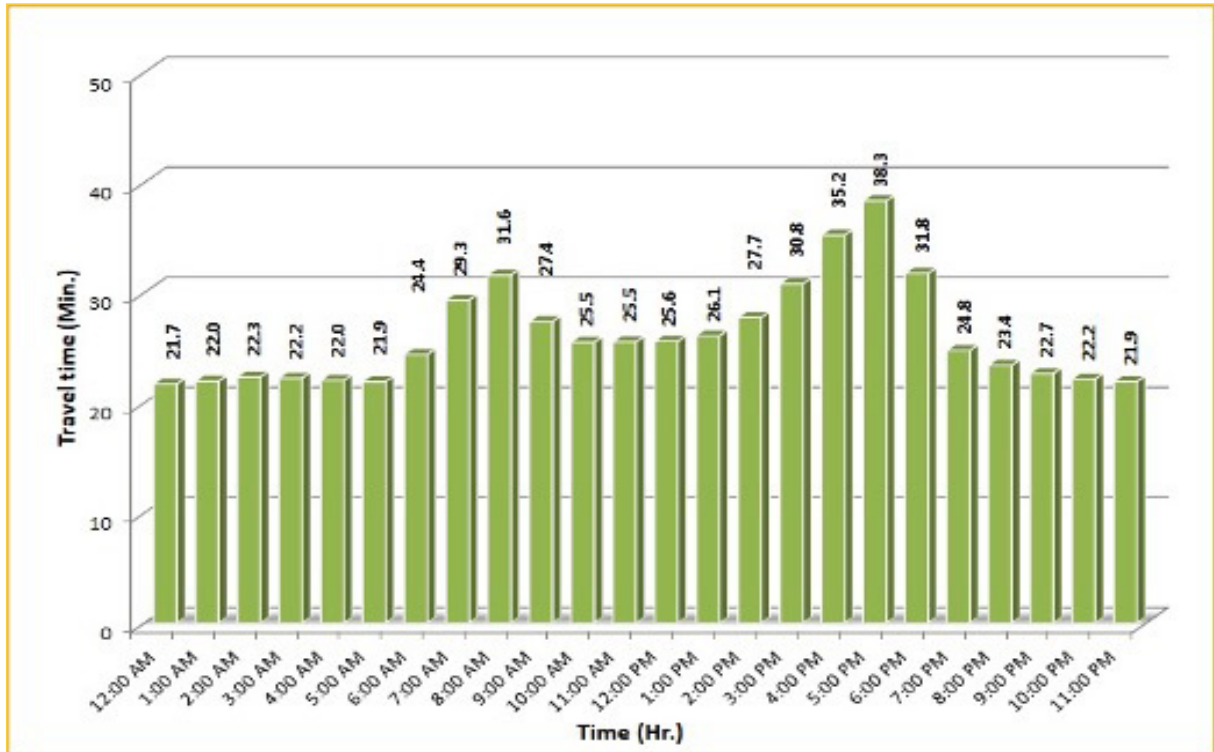
\* Twelve-month weekday average from January 1st, 2021 to December 31st, 2021.

\*\* Data obtained from Regional Integrated Transportation System (RITIS), Probe Data Analytics Suite. Excludes express lanes.

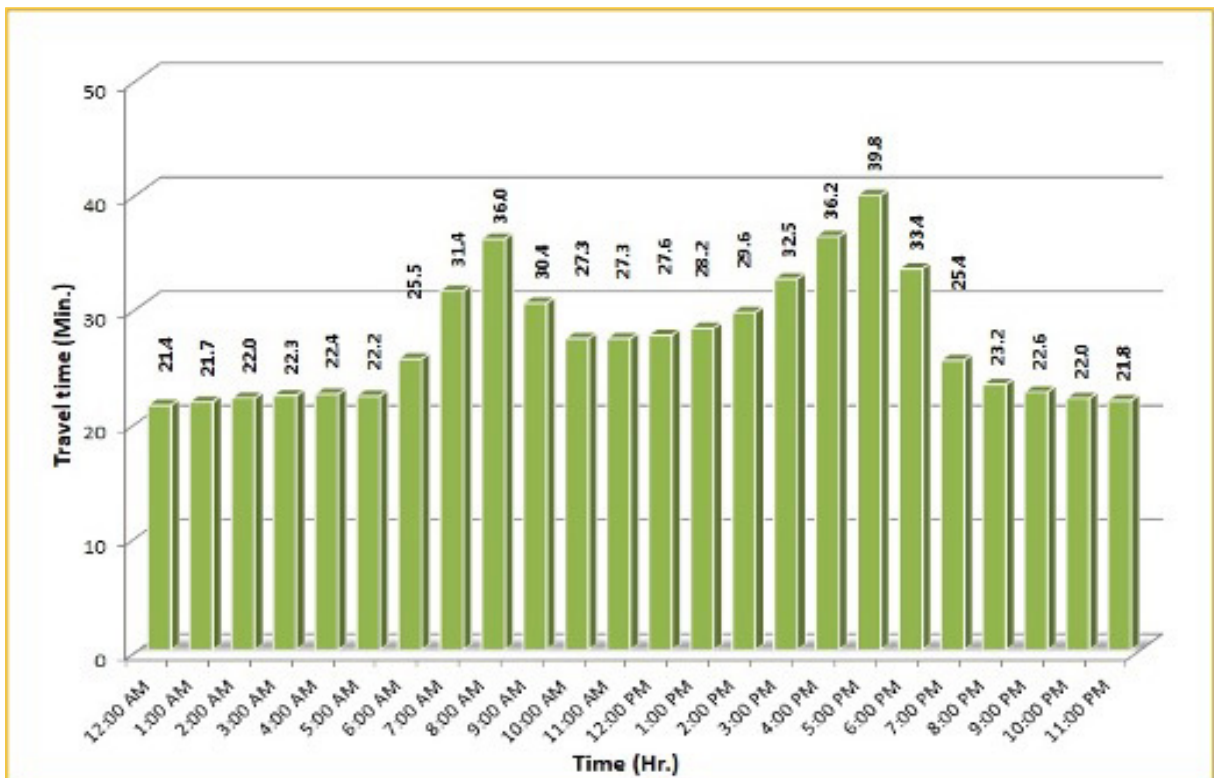
## TRAVEL TIME RELIABILITY REPORT

### Weekdays Travel Times by Time of Day\*

SR 826 Northbound/Eastbound : 24.2 Miles\*\*  
From: US-1  
To: I-95



SR 826 Southbound/Westbound: 24.2 Miles\*\*  
From: I-95  
To: US-1



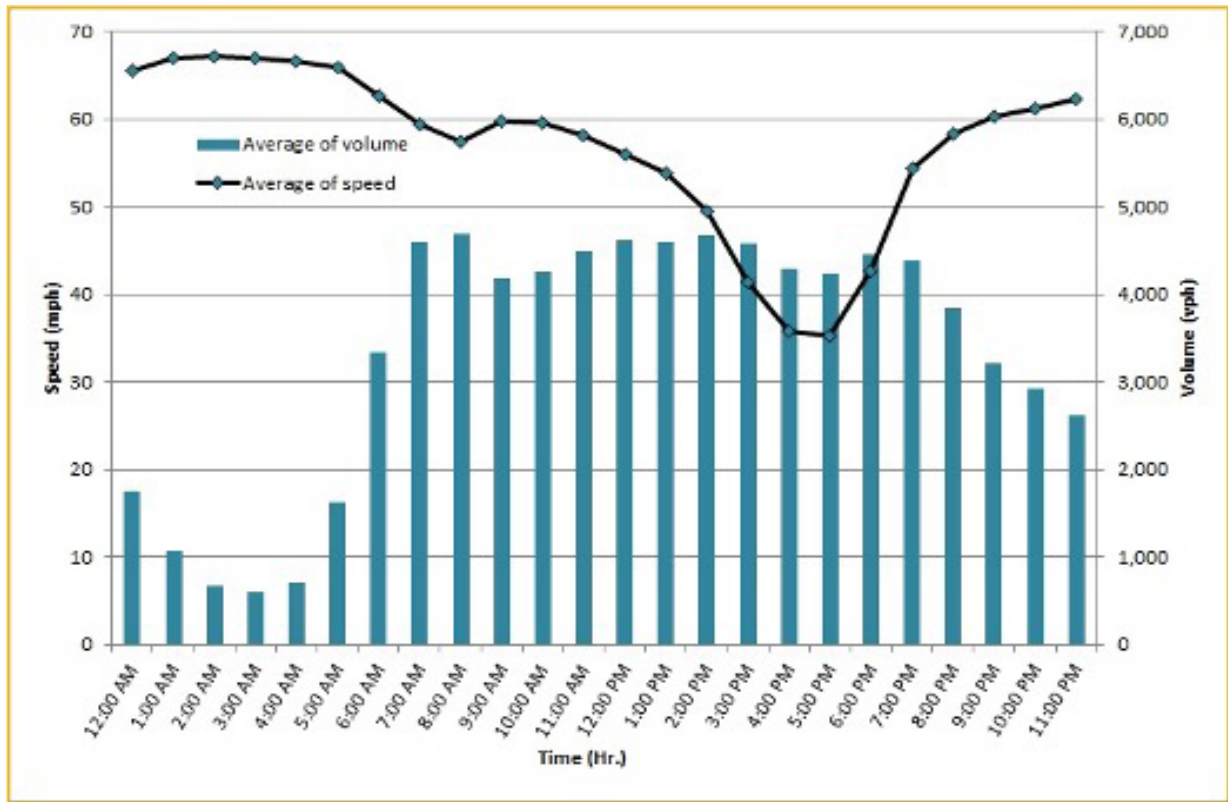
\* Twelve-month weekday average from January 1st, 2021 to December 31st, 2021.

\*\* Data obtained from Regional Integrated Transportation System (RITIS), Probe Data Analytics Suite. Excludes express lanes.

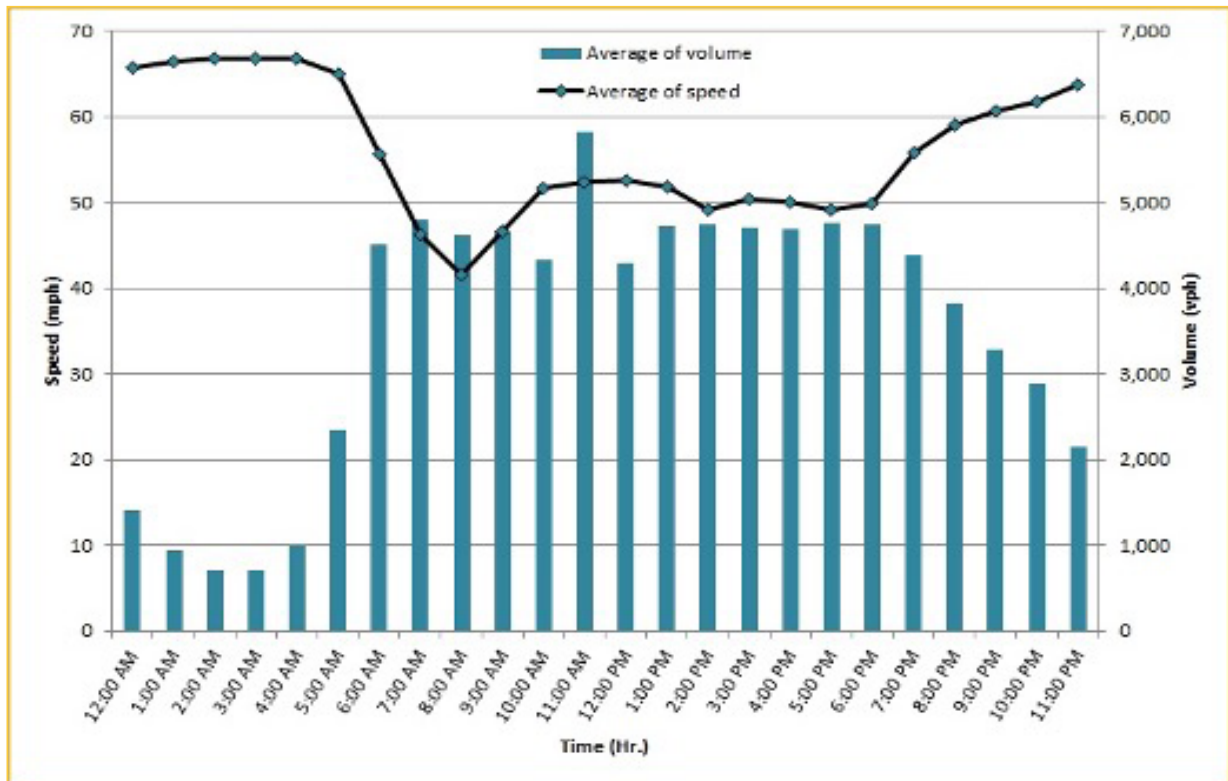
## TRAVEL TIME RELIABILITY REPORT

### Weekdays Speeds and Volumes by Time of Day\*

**I-95 Northbound: 17.3 Miles\*\***  
From: US-1  
To: Miami-Dade / Broward County Line



**I-95 Southbound: 17.3 Miles\*\***  
From: Miami-Dade / Broward County Line  
To: US-1



\* Twelve-month weekday average from January 1st, 2021 to December 31st, 2021.

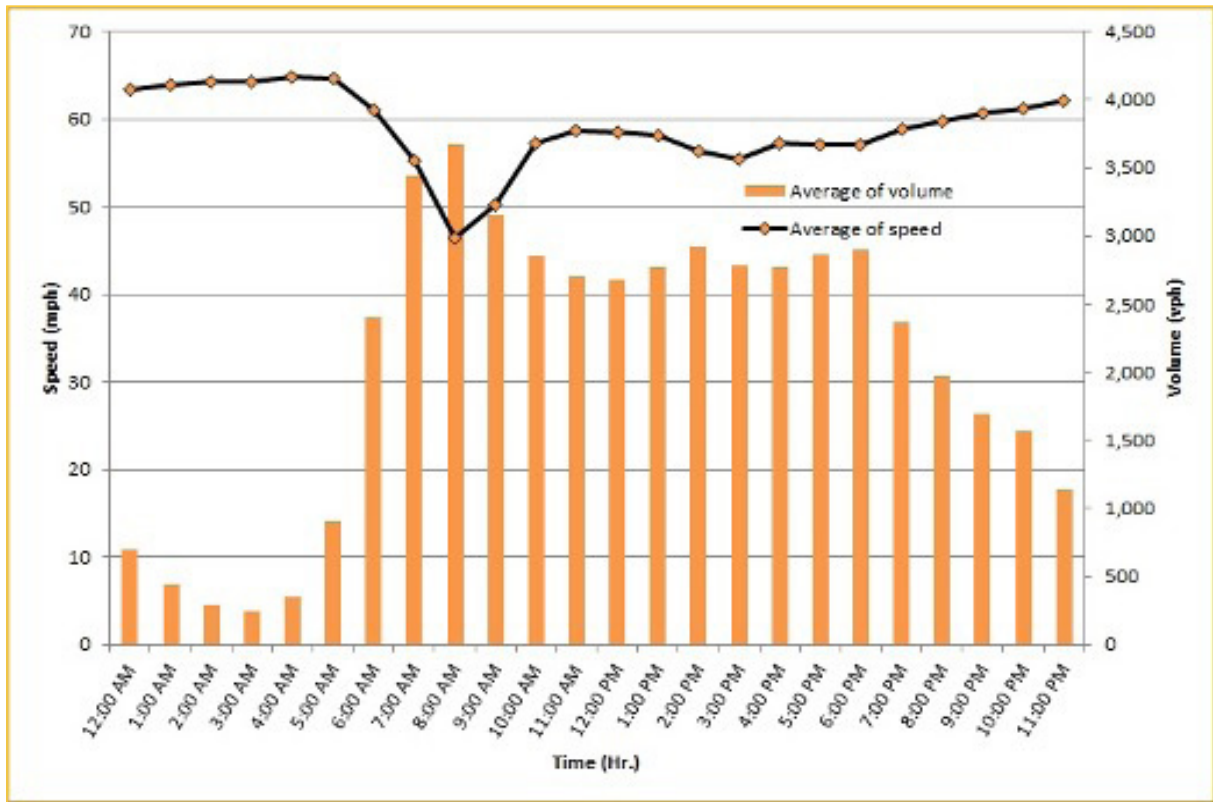
\*\* Data obtained from Regional Integrated Transportation System (RITIS), Probe Data Analytics Suite. Excludes express lanes.



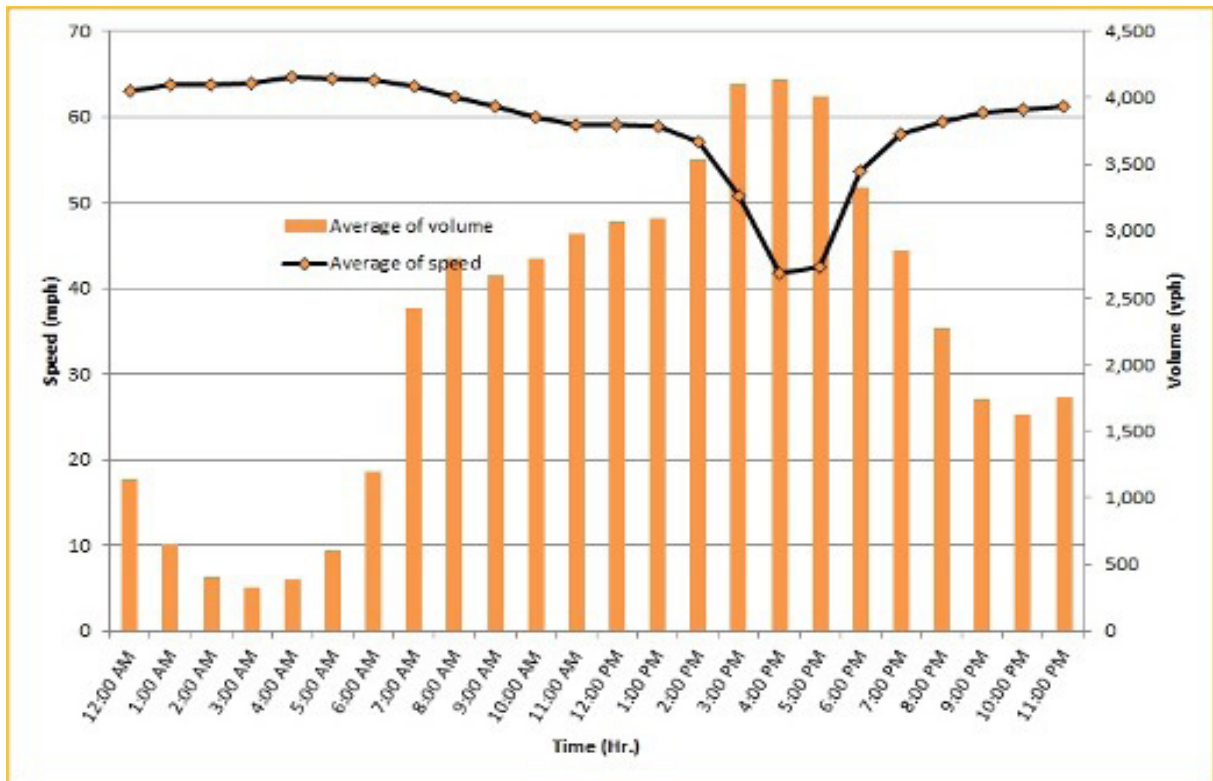
## TRAVEL TIME RELIABILITY REPORT

### Weekdays Speeds and Volumes by Time of Day\*

**I-195 Eastbound: 4.9 Miles\*\***  
From: West of North Miami Avenue  
To: West of Alton Road



**I-195 Westbound: 4.9 Miles\*\***  
From: West of Alton Road  
To: West of North Miami Avenue



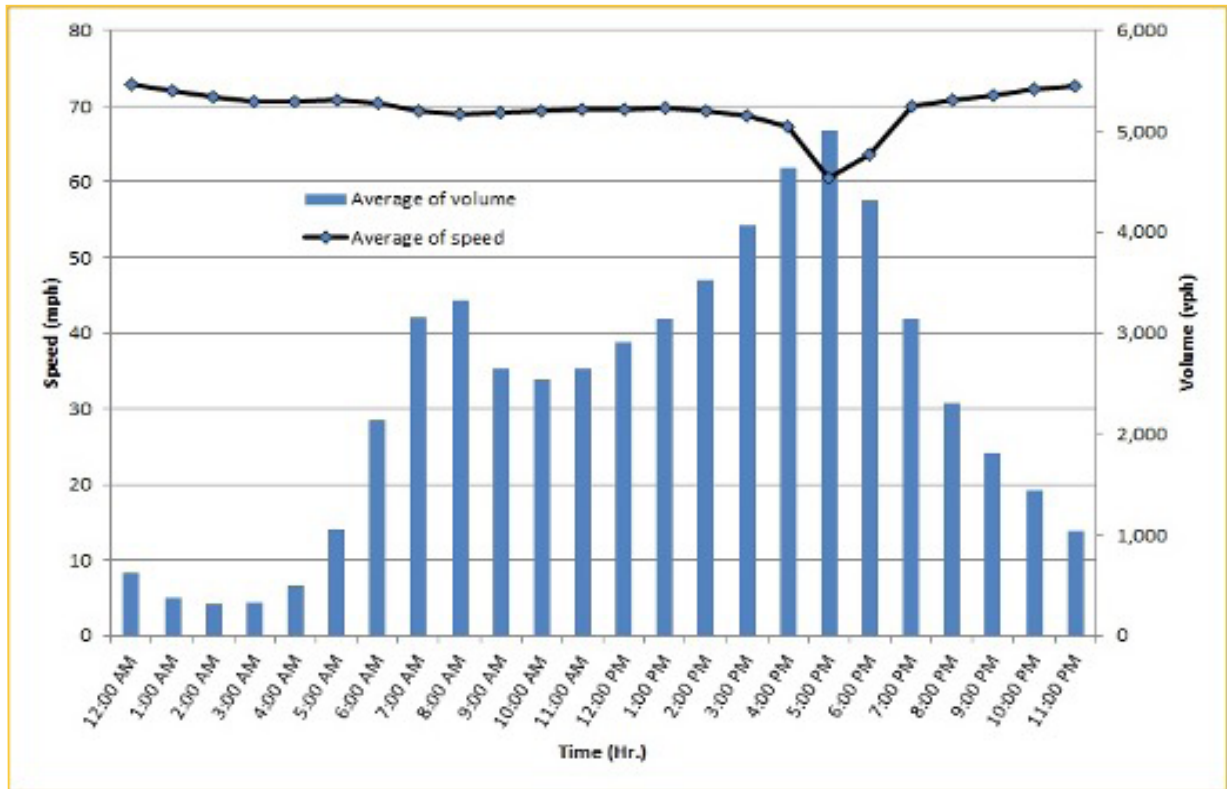
\* Twelve-month weekday average from January 1st, 2021 to December 31st, 2021.

\*\* Data obtained from Regional Integrated Transportation System (RITIS), Probe Data Analytics Suite. Excludes express lanes.

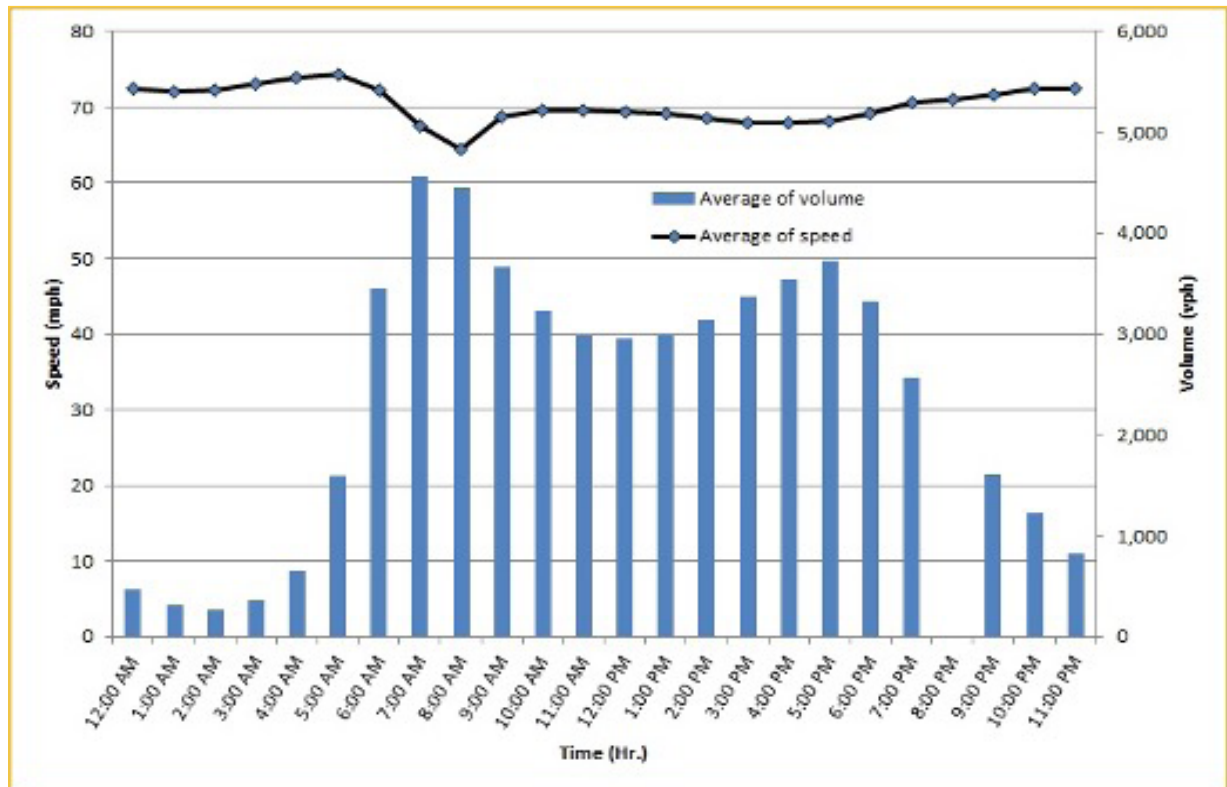
## TRAVEL TIME RELIABILITY REPORT

### Weekdays Speeds and Volumes by Time of Day\*

**I-75 Northbound: 5.4 Miles \*\***  
*From: West of SR 826*  
*To: North of Florida's Turnpike*



**I-75 Southbound: 5.4 Miles \*\***  
*From: North of Florida's Turnpike*  
*To: West of SR 826*



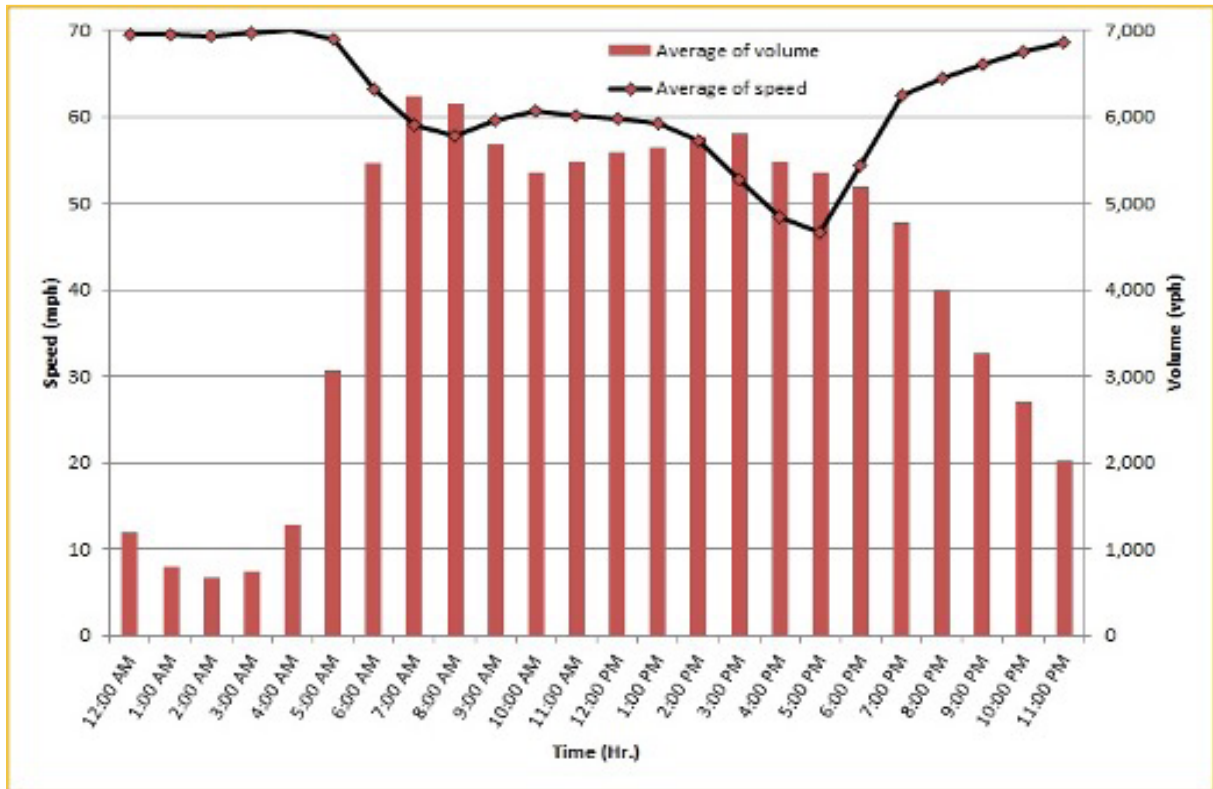
\* Twelve-month weekday average from January 1st, 2021 to December 31st, 2021.

\*\* Data obtained from Regional Integrated Transportation System (RITIS), Probe Data Analytics Suite. Excludes express lanes.


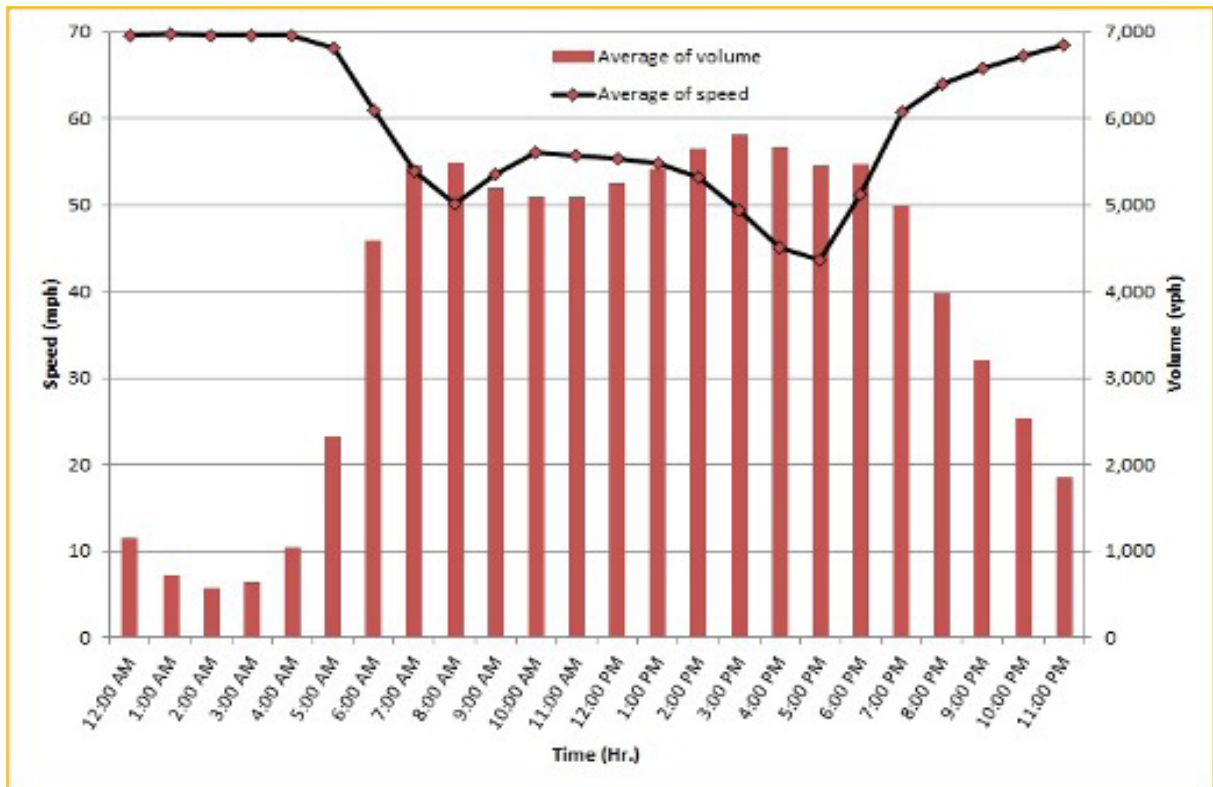
## TRAVEL TIME RELIABILITY REPORT

### Weekdays Speeds and Volumes by Time of Day\*

SR 826 Northbound: 16.6 Miles\*\*  
From: US-1  
To: North of NW 154 Street

SR 826 Southbound: 16.6 Miles\*\*  
From: North of NW 154 Street  
To: US-1

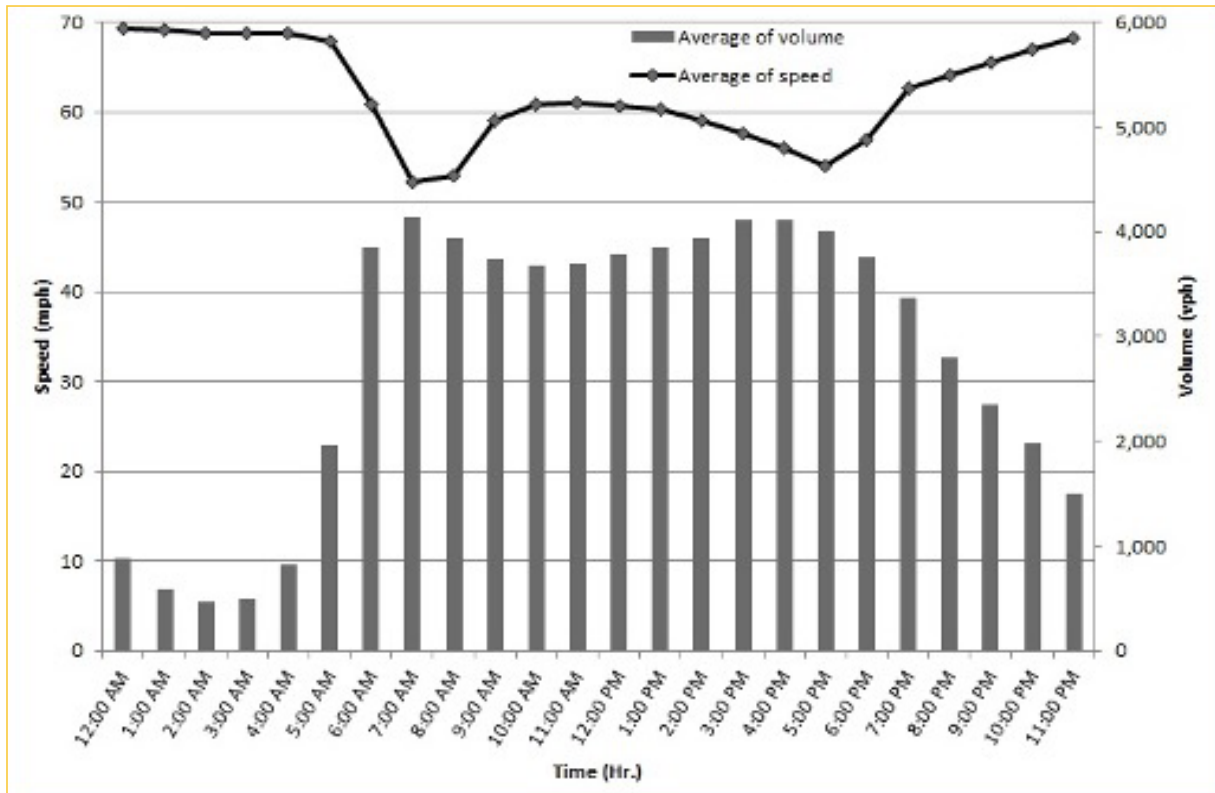
\* Twelve-month weekday average from January 1st, 2021 to December 31st, 2021.

\*\* Data obtained from Regional Integrated Transportation System (RITIS), Probe Data Analytics Suite. Excludes express lanes.

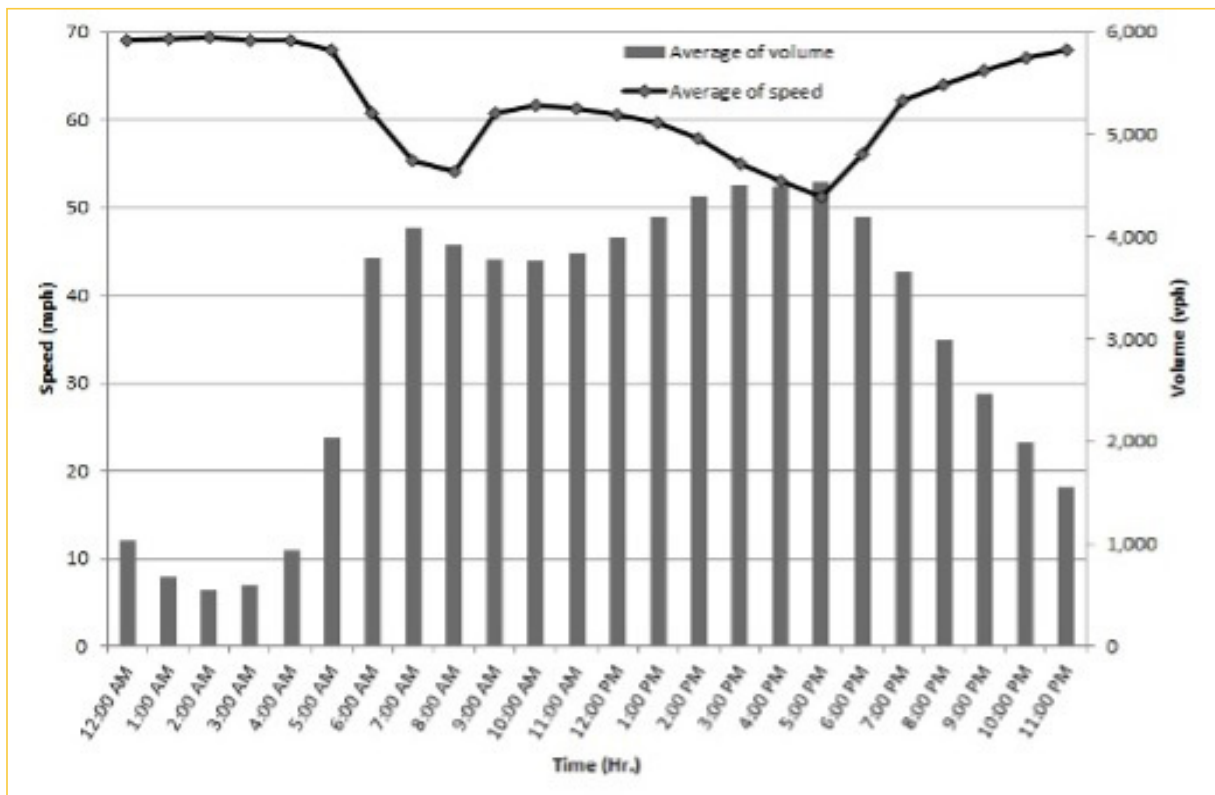
## TRAVEL TIME RELIABILITY REPORT

### Weekdays Speeds and Volumes by Time of Day\*

SR 826 Eastbound: 7.1 Miles\*\*  
From: West of NW 67 Avenue  
To: I-95

SR 826 Westbound: 7.1 Miles\*\*  
From: I-95  
To: West of NW 67 Avenue

\* Twelve-month weekday average from January 1st, 2021 to December 31st, 2021.

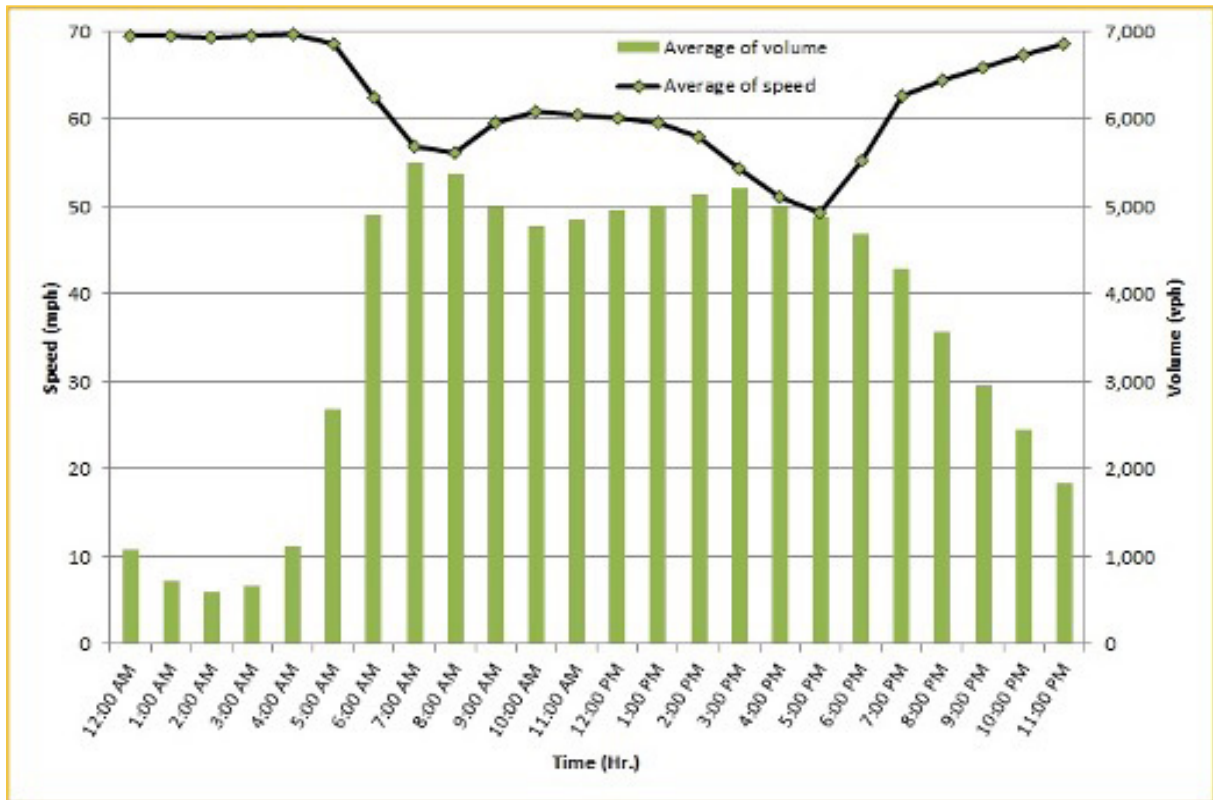
\*\* Data obtained from Regional Integrated Transportation System (RITIS), Probe Data Analytics Suite. Excludes express lanes.



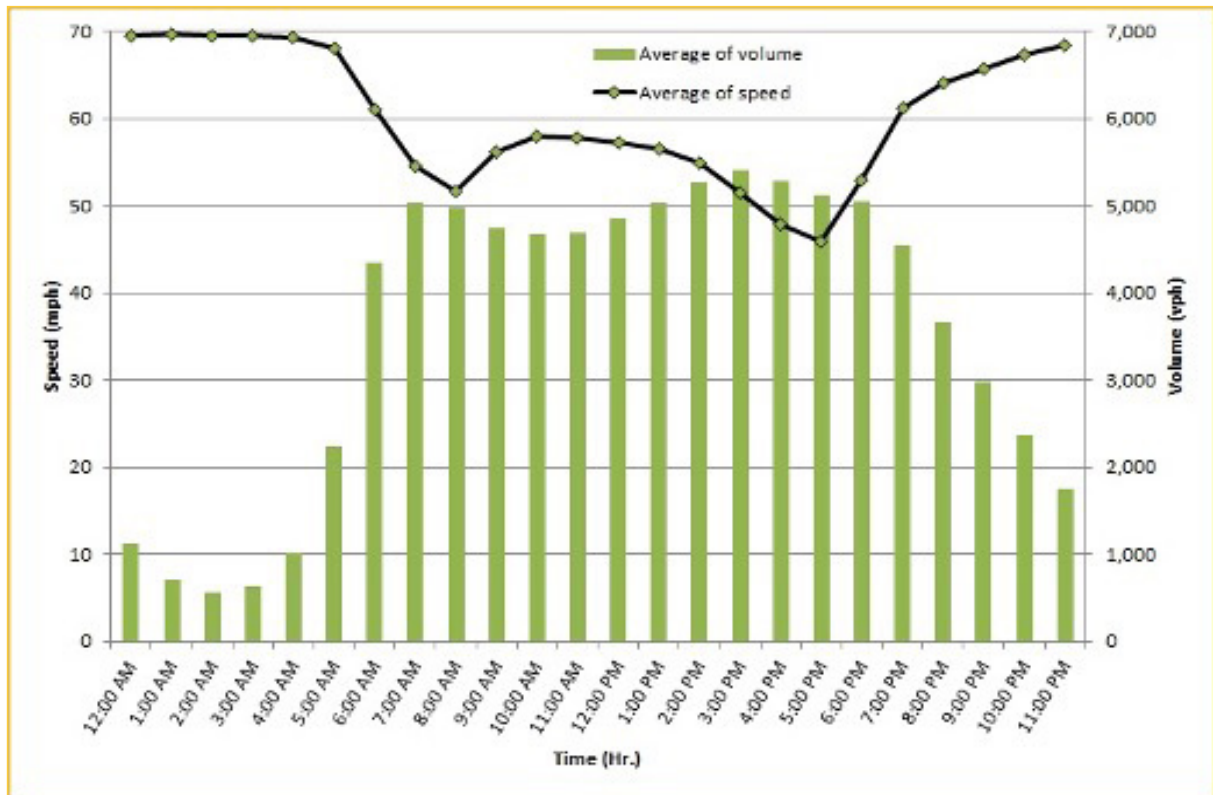
## TRAVEL TIME RELIABILITY REPORT

### Weekdays Speeds and Volumes by Time of Day\*

SR 826 Northbound/Eastbound : 24.2 Miles\*\*  
From: US-1  
To: I-95



SR 826 Southbound/Westbound: 24.2 Miles\*\*  
From: I-95  
To: US-1



\* Twelve-month weekday average from January 1st, 2021 to December 31st, 2021.

\*\* Data obtained from Regional Integrated Transportation System (RITIS), Probe Data Analytics Suite. Excludes express lanes.