

## TRAVEL TIME RELIABILITY REPORT

### Travel Time Index by Roadway\*

| Time          | I-95**        |               | I-195**       |               | I-75**        |               | SR 826**      |               |               |               |               |               |
|---------------|---------------|---------------|---------------|---------------|---------------|---------------|---------------|---------------|---------------|---------------|---------------|---------------|
|               | NB            | SB            | EB            | WB            | NB            | SB            | NB            | EB            | NE            | SB            | WB            | SW            |
| 0:00          | 0.93          | 0.91          | 0.84          | 0.99          | 1.01          | 1.00          | 0.89          | 0.85          | 0.88          | 0.83          | 0.87          | 0.84          |
| 1:00          | 0.90          | 0.88          | 0.86          | 0.98          | 1.03          | 1.01          | 0.88          | 0.87          | 0.87          | 0.84          | 0.89          | 0.86          |
| 2:00          | 0.89          | 0.89          | 0.89          | 1.00          | 1.02          | 1.02          | 0.90          | 0.86          | 0.89          | 0.87          | 0.90          | 0.88          |
| 3:00          | 0.90          | 0.89          | 0.91          | 1.00          | 1.03          | 1.01          | 0.91          | 0.88          | 0.90          | 0.88          | 0.91          | 0.89          |
| 4:00          | 0.89          | 0.89          | 0.92          | 0.98          | 1.05          | 0.99          | 0.86          | 0.87          | 0.86          | 0.86          | 0.89          | 0.87          |
| 5:00          | 0.88          | 0.91          | 0.88          | 0.94          | 1.05          | 0.95          | 0.84          | 0.88          | 0.85          | 0.86          | 0.87          | 0.86          |
| 6:00          | 0.96          | 1.23          | 0.91          | 0.92          | 1.03          | 1.01          | 0.98          | 1.17          | 1.03          | 1.05          | 1.09          | 1.06          |
| 7:00          | 1.06          | 1.89          | 1.17          | 0.96          | 1.05          | 1.51          | 1.24          | 1.63          | 1.35          | 1.33          | 1.51          | 1.38          |
| 8:00          | 1.09          | 2.27          | 1.96          | 1.08          | 1.06          | 1.83          | 1.27          | 1.71          | 1.40          | 1.55          | 1.56          | 1.56          |
| 9:00          | 1.02          | 1.89          | 1.87          | 1.03          | 1.05          | 1.24          | 1.09          | 1.18          | 1.12          | 1.32          | 1.16          | 1.27          |
| 10:00         | 0.99          | 1.45          | 1.29          | 1.02          | 1.03          | 1.07          | 1.00          | 0.99          | 1.00          | 1.07          | 1.00          | 1.05          |
| 11:00         | 1.02          | 1.29          | 1.07          | 1.04          | 1.03          | 1.03          | 0.99          | 0.98          | 0.98          | 1.02          | 1.02          | 1.02          |
| 12:00         | 1.06          | 1.23          | 1.01          | 1.04          | 1.03          | 1.04          | 1.01          | 0.98          | 1.00          | 1.02          | 1.01          | 1.02          |
| 13:00         | 1.18          | 1.22          | 1.04          | 1.05          | 1.03          | 1.06          | 1.06          | 0.98          | 1.04          | 1.06          | 1.04          | 1.05          |
| 14:00         | 1.35          | 1.29          | 1.27          | 1.08          | 1.03          | 1.11          | 1.14          | 1.00          | 1.10          | 1.08          | 1.11          | 1.09          |
| 15:00         | 1.79          | 1.33          | 1.42          | 1.33          | 1.05          | 1.12          | 1.34          | 1.04          | 1.25          | 1.20          | 1.25          | 1.21          |
| 16:00         | 2.21          | 1.41          | 1.18          | 1.77          | 1.08          | 1.11          | 1.71          | 1.13          | 1.54          | 1.55          | 1.34          | 1.49          |
| 17:00         | 2.37          | 1.50          | 1.15          | 1.65          | 1.36          | 1.10          | 2.01          | 1.23          | 1.78          | 1.91          | 1.37          | 1.75          |
| 18:00         | 2.02          | 1.42          | 1.22          | 1.23          | 1.31          | 1.07          | 1.68          | 1.20          | 1.54          | 1.60          | 1.15          | 1.46          |
| 19:00         | 1.34          | 1.14          | 1.07          | 1.04          | 1.05          | 1.01          | 1.10          | 1.01          | 1.07          | 1.03          | 0.96          | 1.01          |
| 20:00         | 1.03          | 0.97          | 0.90          | 0.99          | 1.03          | 1.00          | 0.91          | 0.93          | 0.91          | 0.86          | 0.92          | 0.88          |
| 21:00         | 1.09          | 1.03          | 0.88          | 0.99          | 1.00          | 0.99          | 0.87          | 0.89          | 0.88          | 0.83          | 0.90          | 0.85          |
| 22:00         | 1.10          | 1.08          | 0.92          | 1.00          | 1.01          | 1.00          | 0.89          | 0.89          | 0.89          | 0.84          | 0.90          | 0.86          |
| 23:00         | 1.09          | 1.02          | 0.91          | 0.99          | 1.03          | 0.99          | 0.92          | 0.87          | 0.90          | 0.86          | 0.90          | 0.87          |
| <b>FFS***</b> | <b>55 mph</b> | <b>55 mph</b> | <b>52 mph</b> | <b>52 mph</b> | <b>69 mph</b> | <b>67 mph</b> | <b>53 mph</b> | <b>55 mph</b> | <b>53 mph</b> | <b>53 mph</b> | <b>55 mph</b> | <b>53 mph</b> |

*Maximum Travel Time Index.*

**Travel Time Index (TTI)** is a measure of average conditions that indicates how much longer, **on average**, travel times are during congestion compared to during light traffic.

**Real World Example:** A TTI of 1.60 means that for a trip that usually takes 10 minutes in light traffic, a traveler should budget for an additional 6 minutes **on average**.



\* Twelve-month weekday average from February 1<sup>st</sup>, 2019 to January 31<sup>st</sup>, 2020.

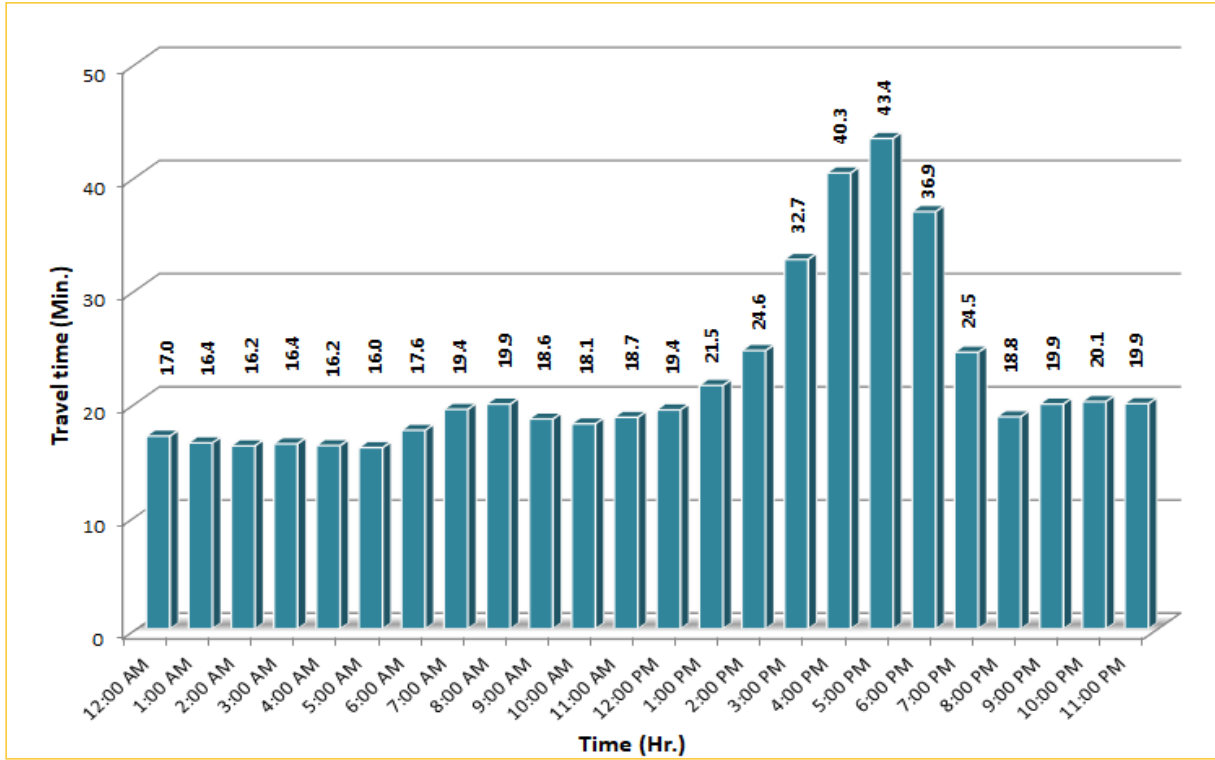
\*\* Data obtained from Regional Integrated Transportation System (RITIS), Probe Data Analytics Suite.

\*\*\* Free Flow Speed.

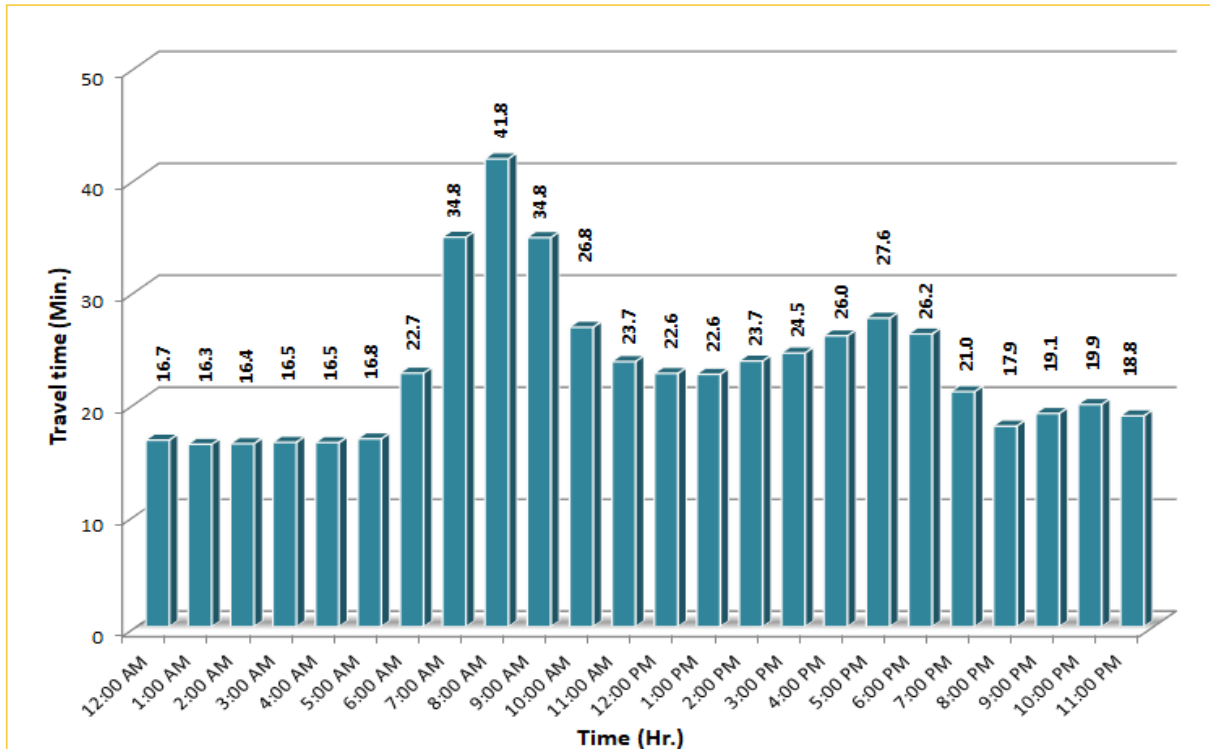
## TRAVEL TIME RELIABILITY REPORT

### Weekdays Travel Times by Time of Day\*

**I-95 Northbound: 17.3 Miles\*\***  
 From: US-1  
 To: Miami-Dade / Broward County Line

**I-95 Southbound: 17.3 Miles\*\***  
 From: Miami-Dade / Broward County Line  
 To: US-1

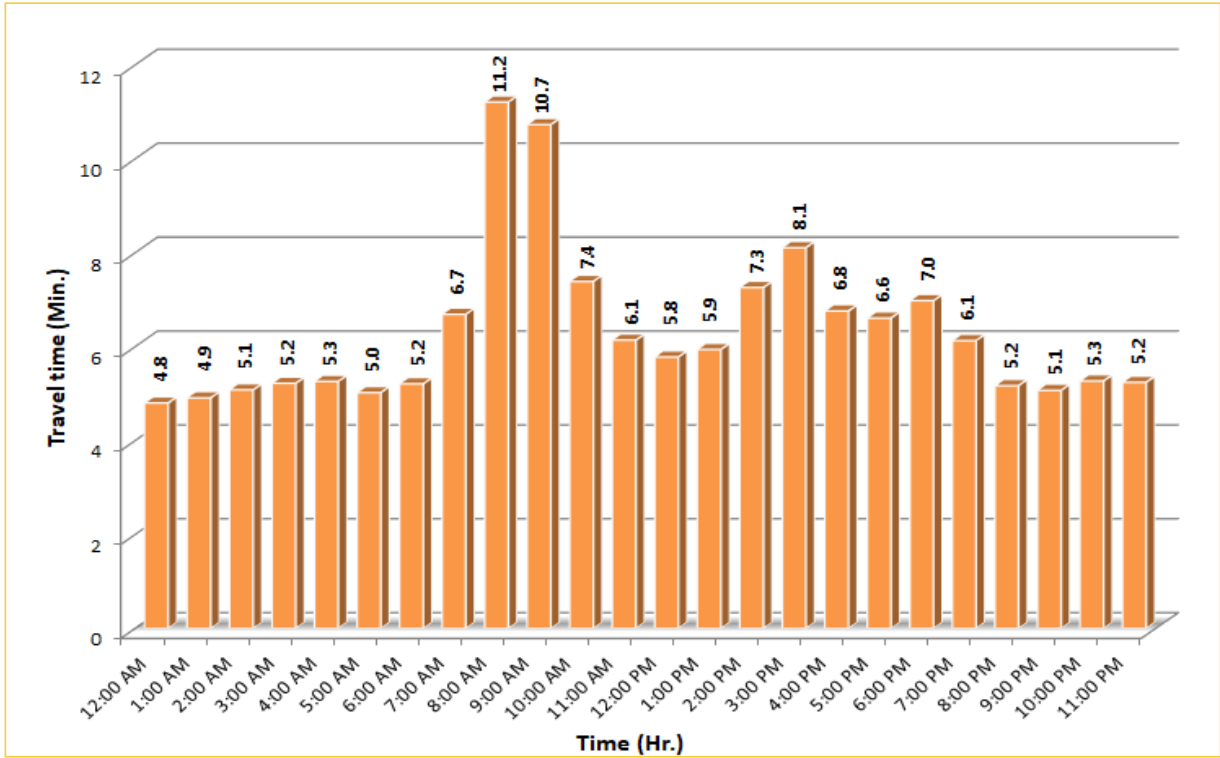
\* Twelve-month weekday average from February 1<sup>st</sup>, 2019 to January 31<sup>st</sup>, 2020.

\*\* Data obtained from Regional Integrated Transportation System (RITIS), Probe Data Analytics Suite. Excludes express lanes.

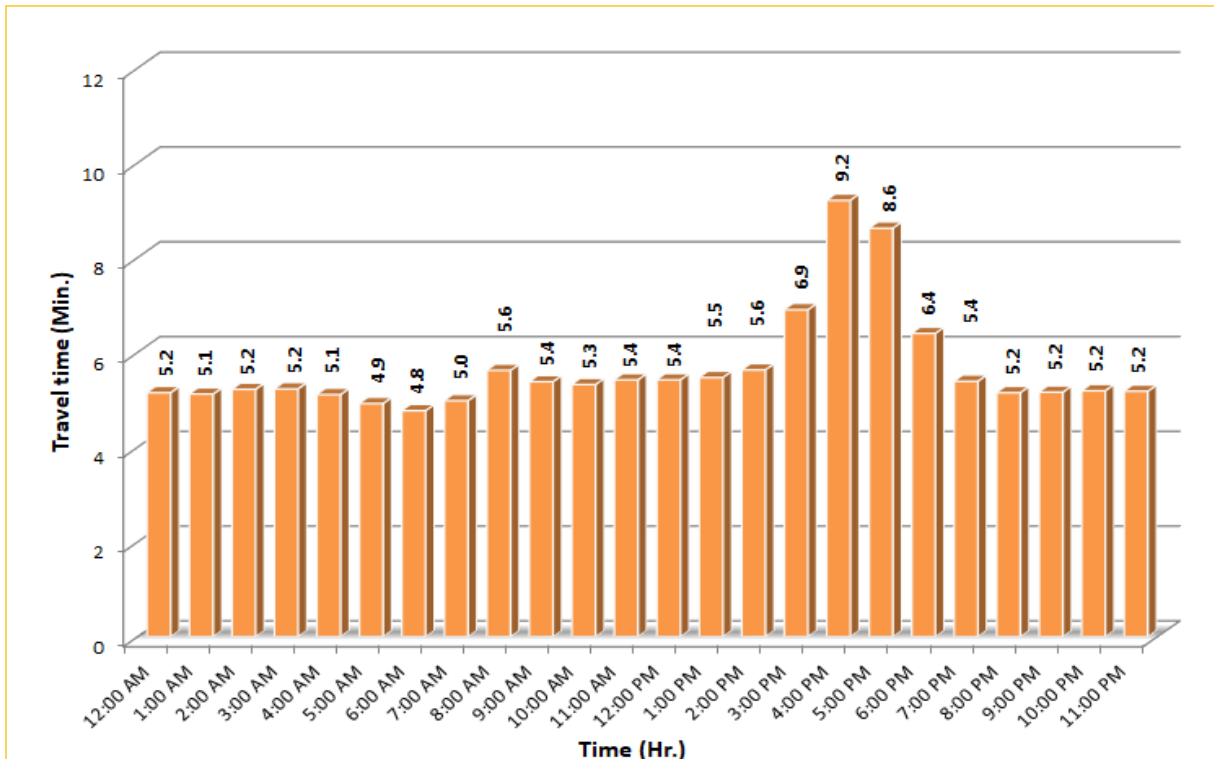
## TRAVEL TIME RELIABILITY REPORT

### Weekdays Travel Times by Time of Day\*

**I-195 Eastbound: 4.9 Miles\*\***  
 From: West of North Miami Avenue  
 To: West of Alton Road

**I-195 Westbound: 4.9 Miles\*\***  
 From: West of Alton Road  
 To: West of North Miami Avenue


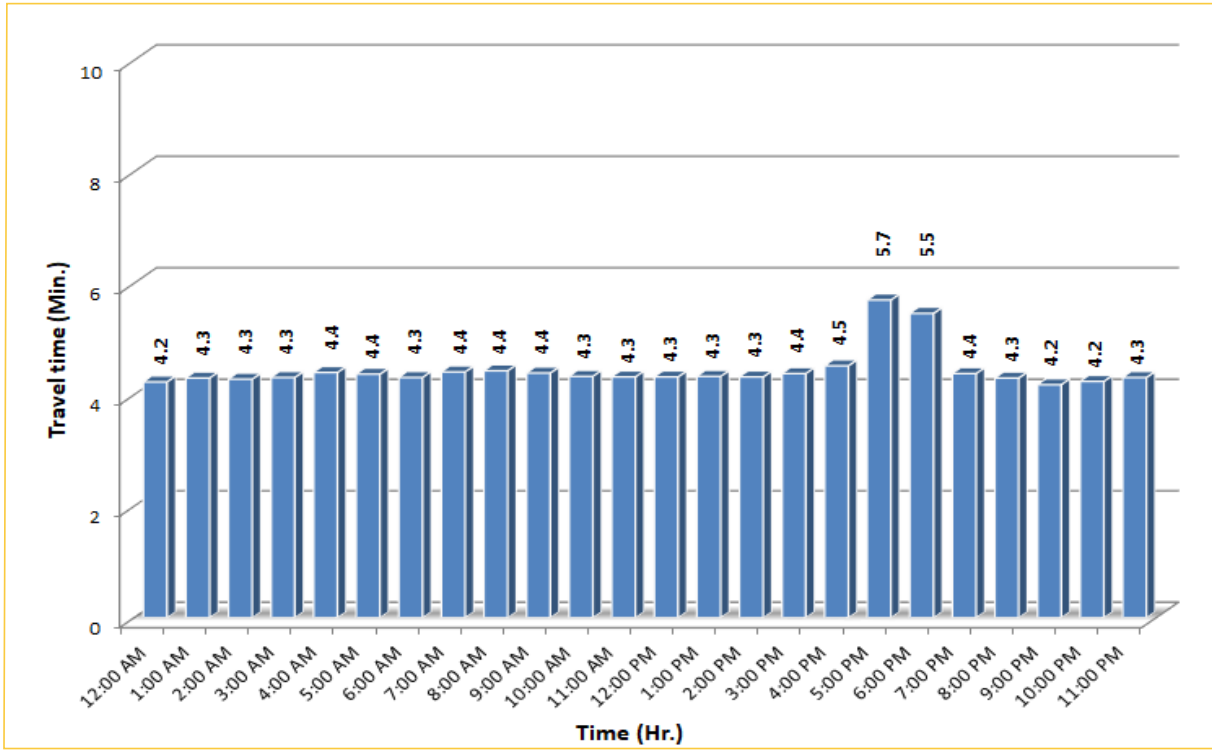
\* Twelve-month weekday average from February 1<sup>st</sup>, 2019 to January 31<sup>st</sup>, 2020.

\*\* Data obtained from Regional Integrated Transportation System (RITIS), Probe Data Analytics Suite.

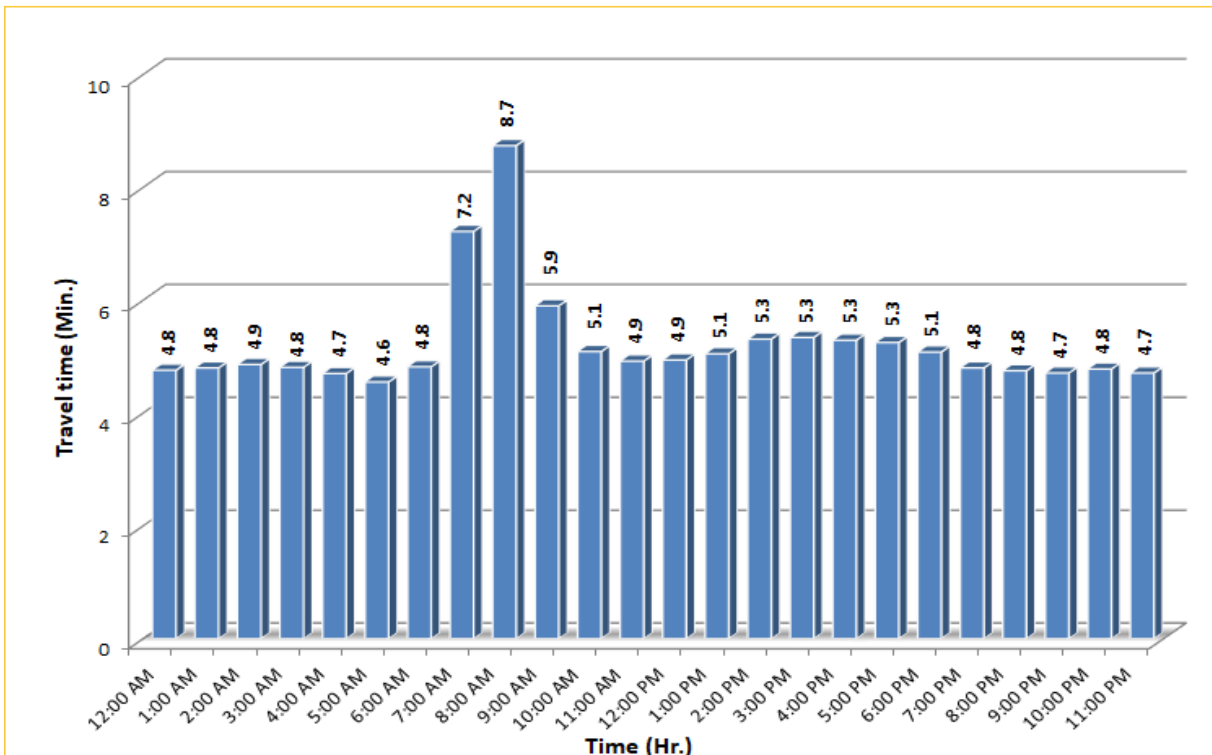
## TRAVEL TIME RELIABILITY REPORT

### Weekdays Travel Times by Time of Day\*

**I-75 Northbound: 5.4 Miles\*\***  
 From: West of SR 826  
 To: North of Florida's Turnpike

**I-75 Southbound: 5.4 Miles\*\***  
 From: North of Florida's Turnpike  
 To: West of SR 826

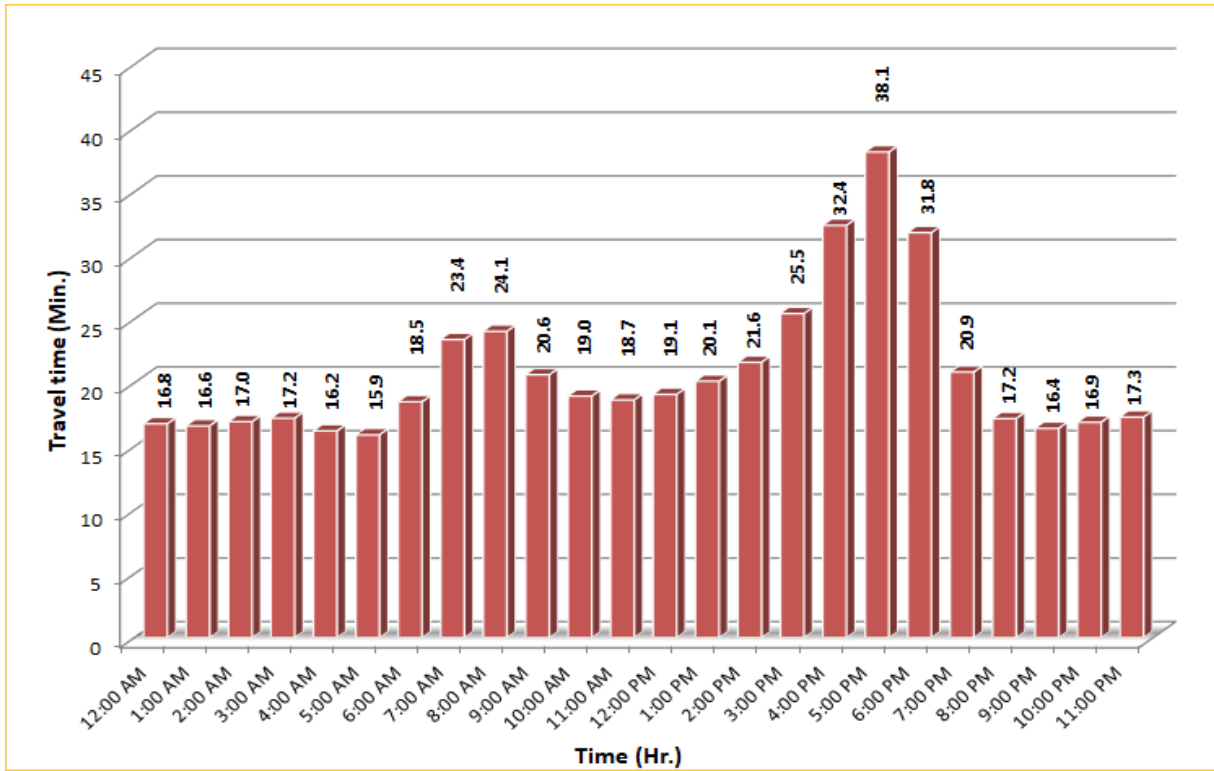
\* Twelve-month weekday average from February 1<sup>st</sup>, 2019 to January 31<sup>st</sup>, 2020.

\*\* Data obtained from Regional Integrated Transportation System (RITIS), Probe Data Analytics Suite. Excludes express lanes.


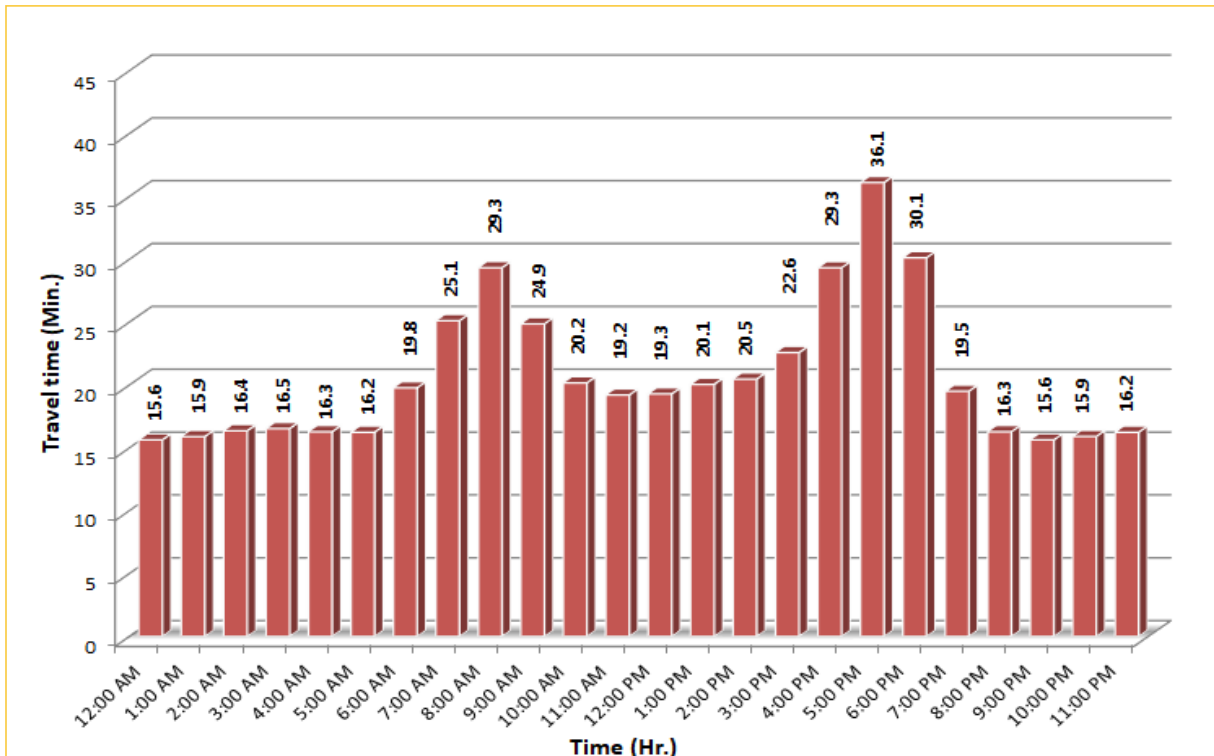
## TRAVEL TIME RELIABILITY REPORT

### Weekdays Travel Times by Time of Day\*

SR 826 Northbound: 16.6 Miles\*\*  
 From: US-1  
 To: North of NW 154 Street

SR 826 Southbound: 16.6 Miles\*\*  
 From: North of NW 154 Street  
 To: US-1

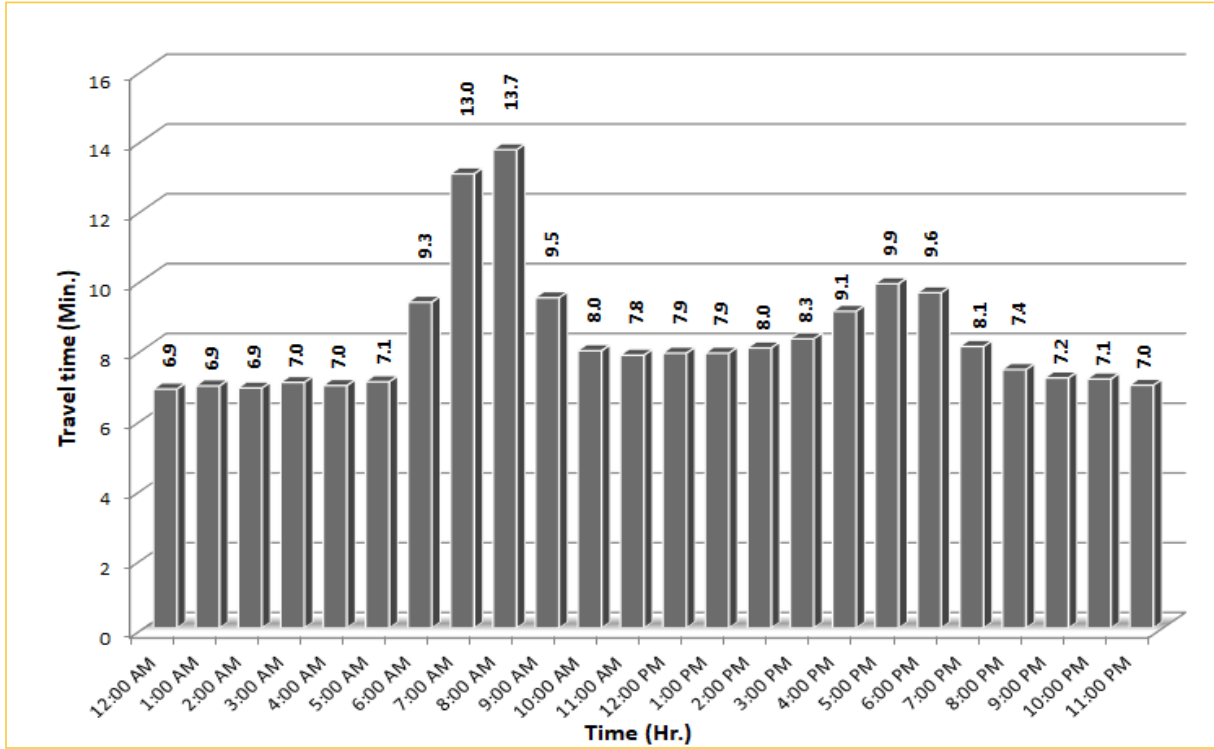
\* Twelve-month weekday average from February 1<sup>st</sup>, 2019 to January 31<sup>st</sup>, 2020.

\*\* Data obtained from Regional Integrated Transportation System (RITIS), Probe Data Analytics Suite. Excludes express lanes.

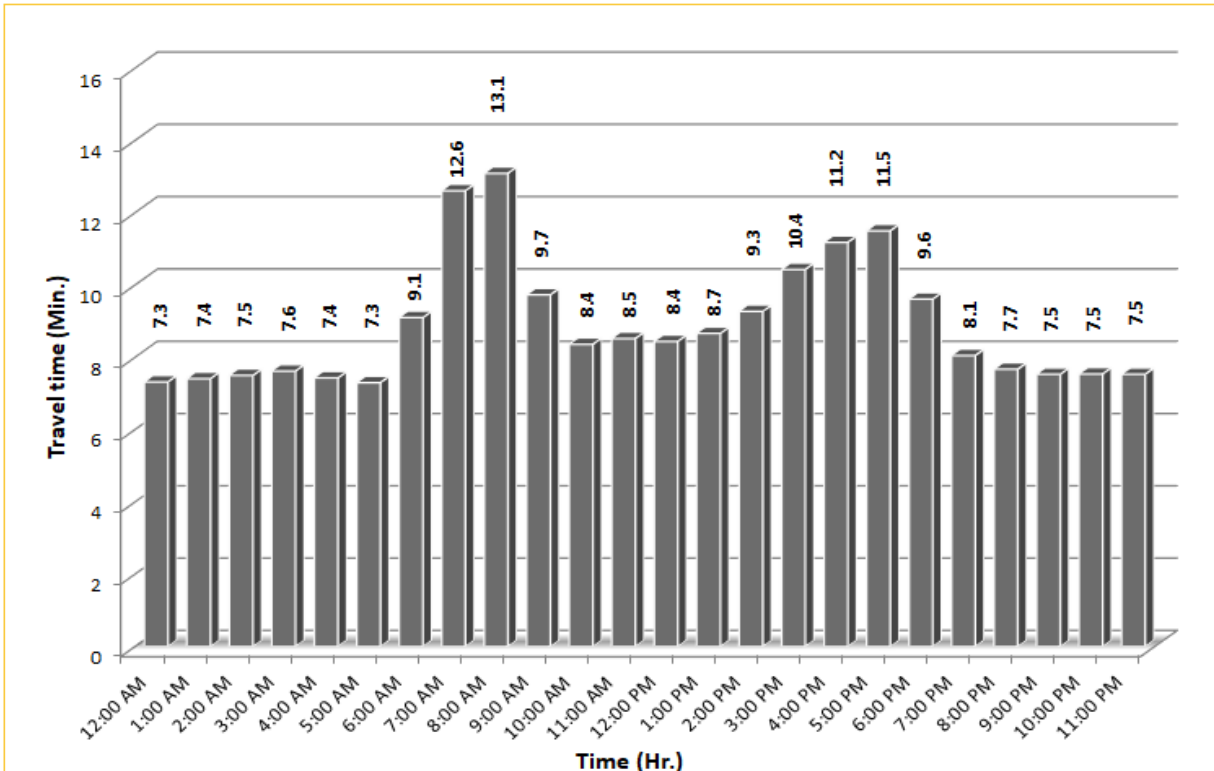
## TRAVEL TIME RELIABILITY REPORT

### Weekdays Travel Times by Time of Day\*

SR 826 Eastbound: 7.1 Miles\*\*  
 From: West of NW 67 Avenue  
 To: I-95

SR 826 Westbound: 7.1 Miles\*\*  
 From: I-95  
 To: West of NW 67 Avenue

\* Twelve-month weekday average from February 1<sup>st</sup>, 2019 to January 31<sup>st</sup>, 2020.

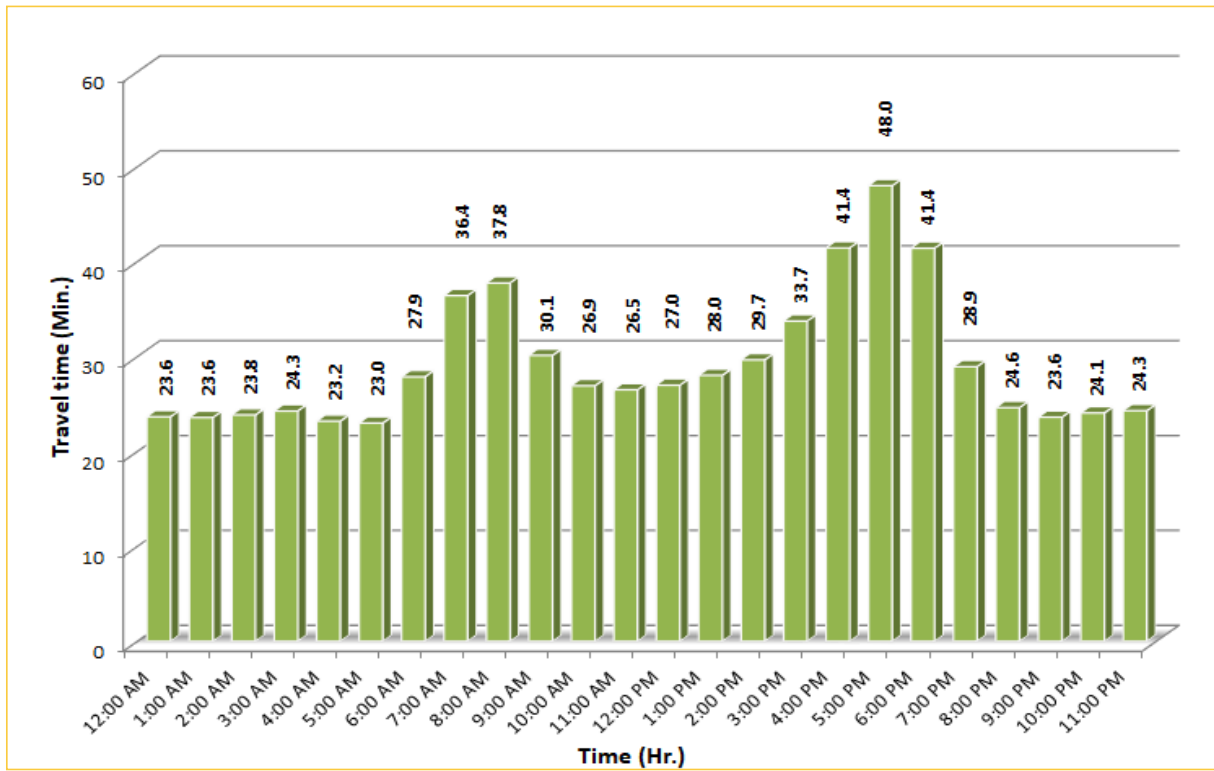
\*\* Data obtained from Regional Integrated Transportation System (RITIS), Probe Data Analytics Suite.



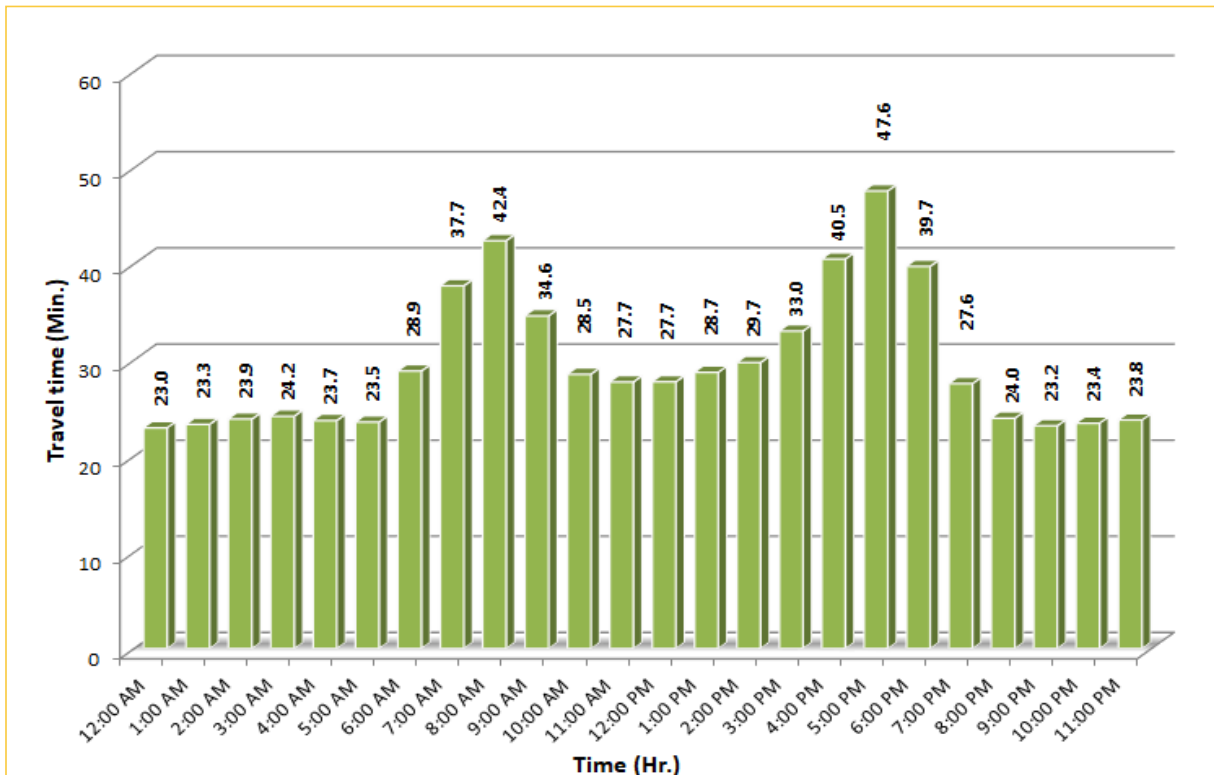
## TRAVEL TIME RELIABILITY REPORT

### Weekdays Travel Times by Time of Day\*

SR 826 Northbound/Eastbound : 24.2 Miles\*\*  
 From: US-1  
 To: I-95



SR 826 Southbound/Westbound: 24.2 Miles\*\*  
 From: I-95  
 To: US-1



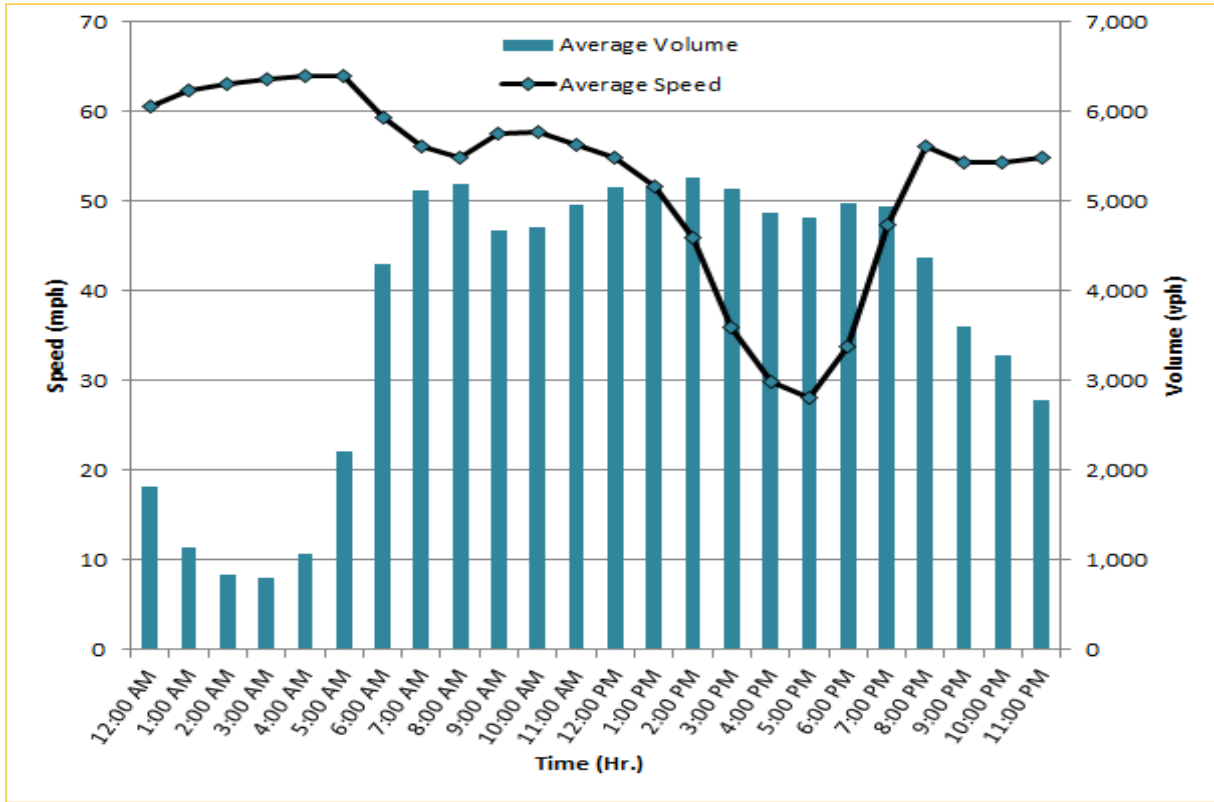
\* Twelve-month weekday average from February 1<sup>st</sup>, 2019 to January 31<sup>st</sup>, 2020.

\*\* Data obtained from Regional Integrated Transportation System (RITIS), Probe Data Analytics Suite. Excludes express lanes.

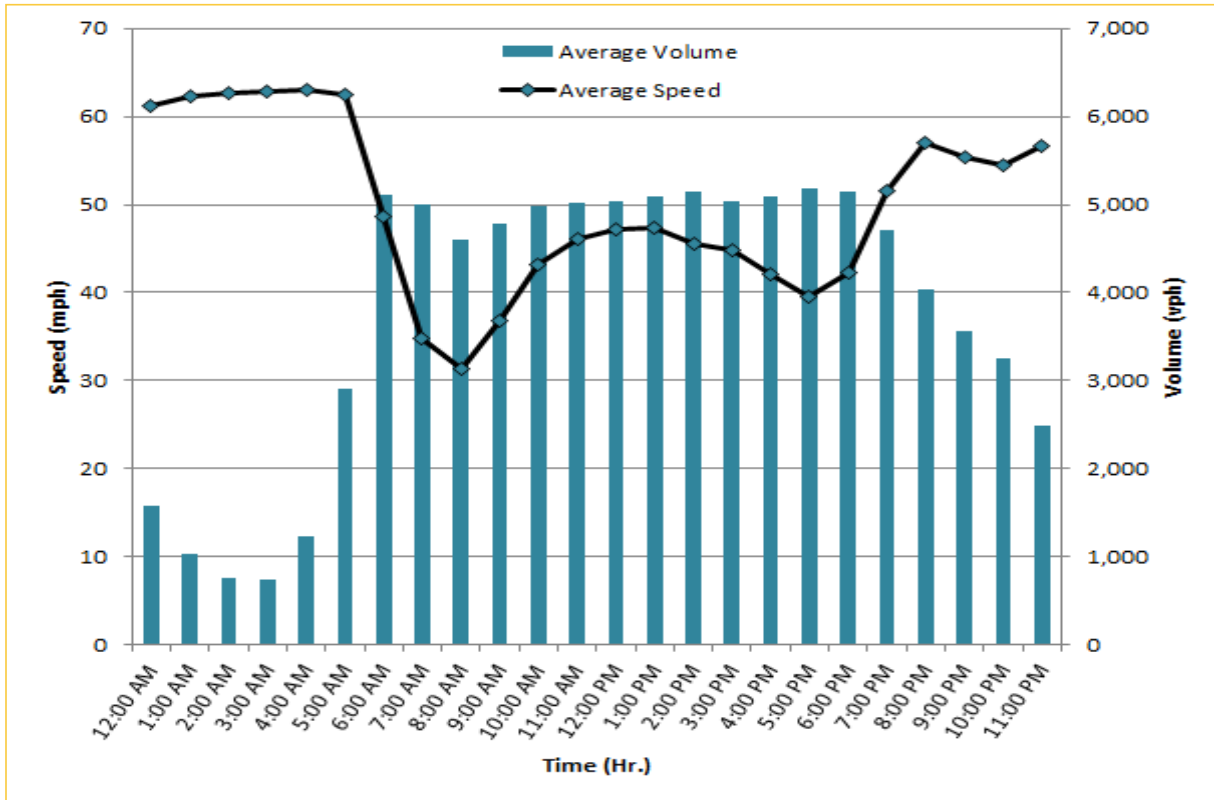
## TRAVEL TIME RELIABILITY REPORT

### Weekdays Speeds and Volumes by Time of Day\*

**I-95 Northbound: 17.3 Miles**  
 From: US-1  
 To: Miami-Dade / Broward County Line

**I-95 Southbound: 17.3 Miles**  
 From: Miami-Dade / Broward County Line  
 To: US-1

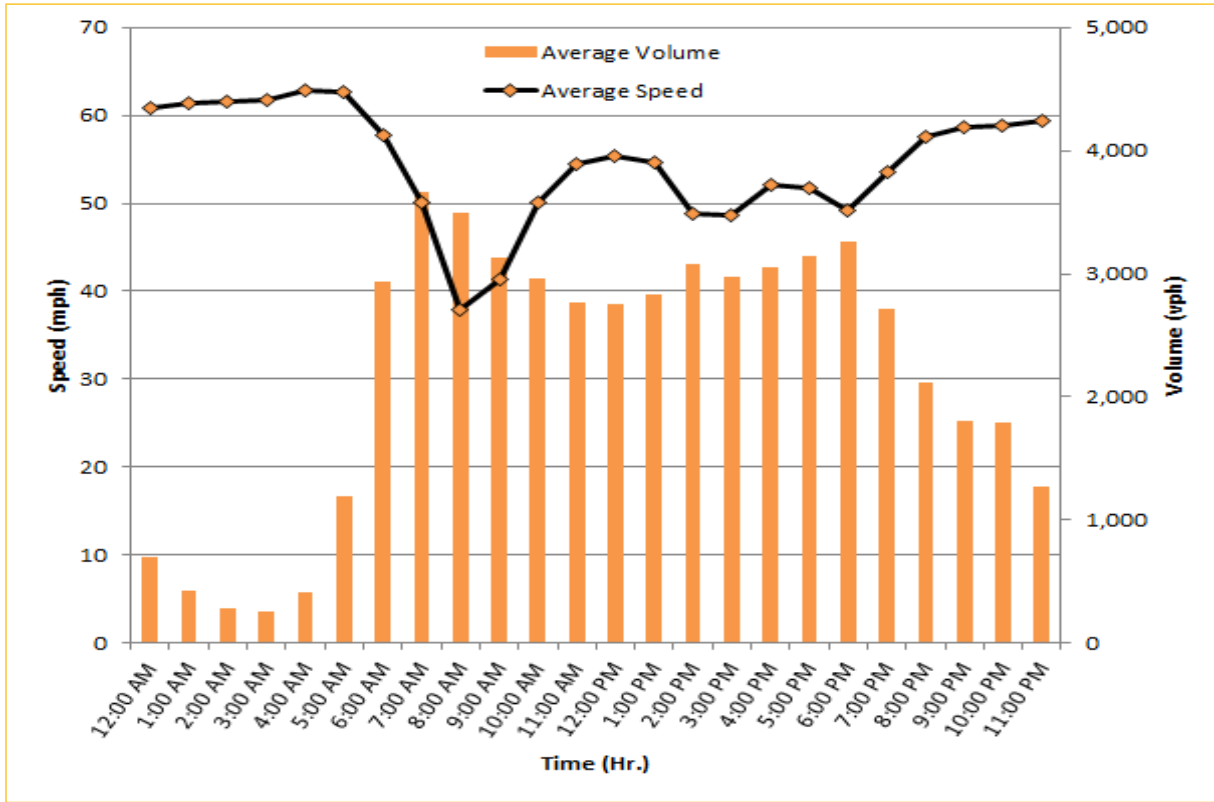
\* Twelve-month weekday average from February 1<sup>st</sup>, 2019 to January 31<sup>st</sup>, 2020. Excludes express lanes.



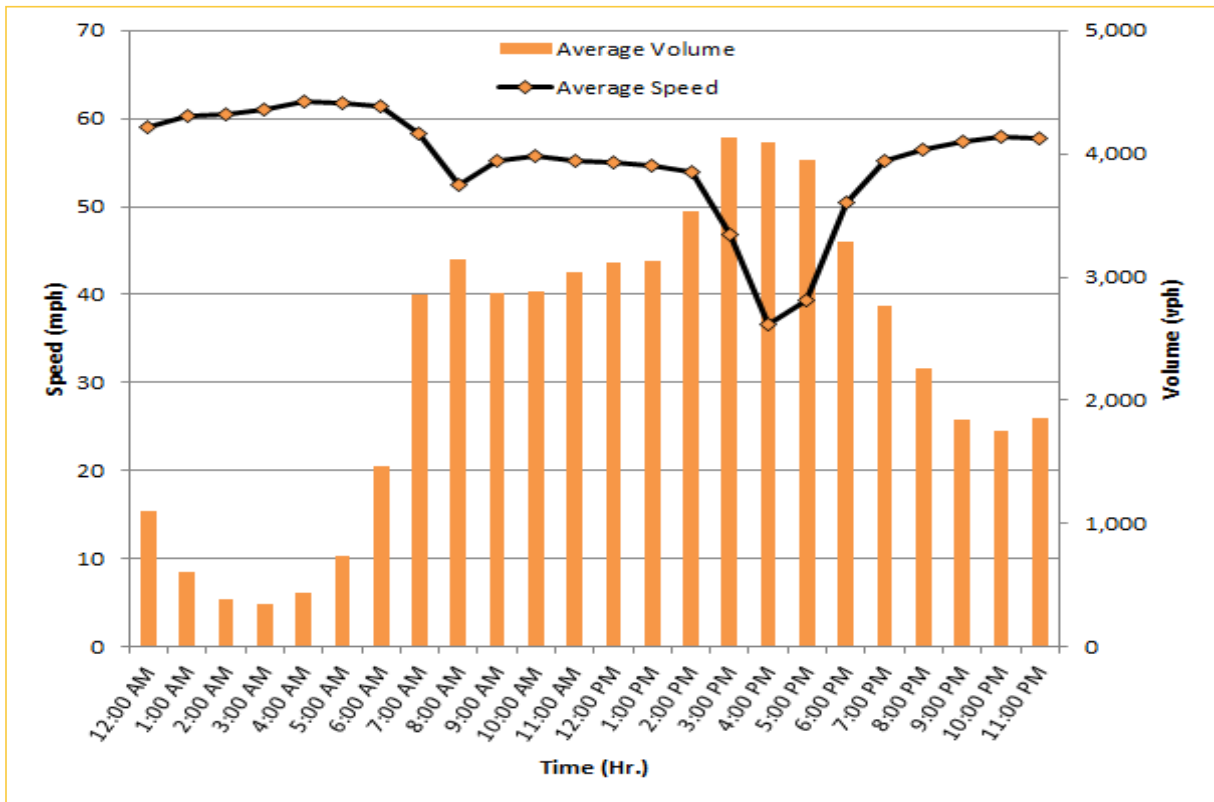
## TRAVEL TIME RELIABILITY REPORT

### Weekdays Speeds and Volumes by Time of Day\*

**I-195 Eastbound: 4.9 Miles**  
 From: West of North Miami Avenue  
 To: West of Alton Road

**I-195 Westbound: 4.9 Miles**  
 From: West of Alton Road  
 To: West of North Miami Avenue


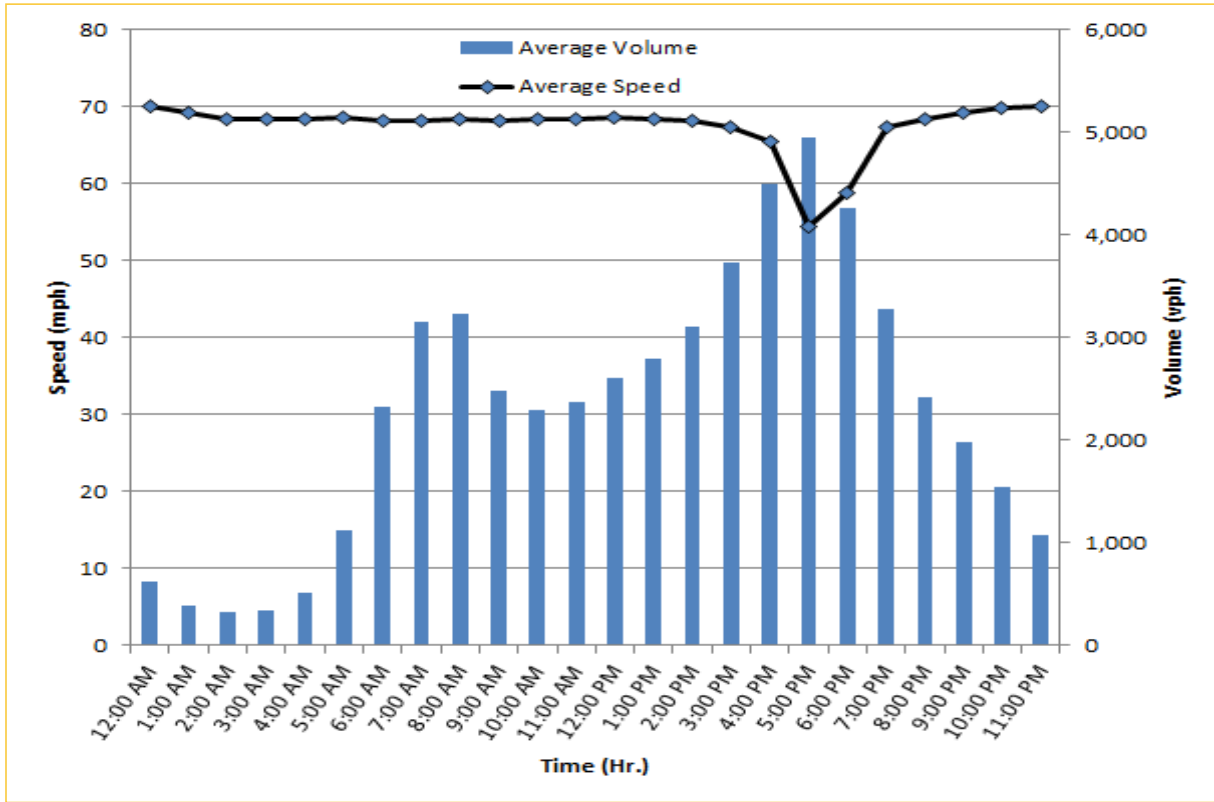



\* Twelve-month weekday average from February 1<sup>st</sup>, 2019 to January 31<sup>st</sup>, 2020.

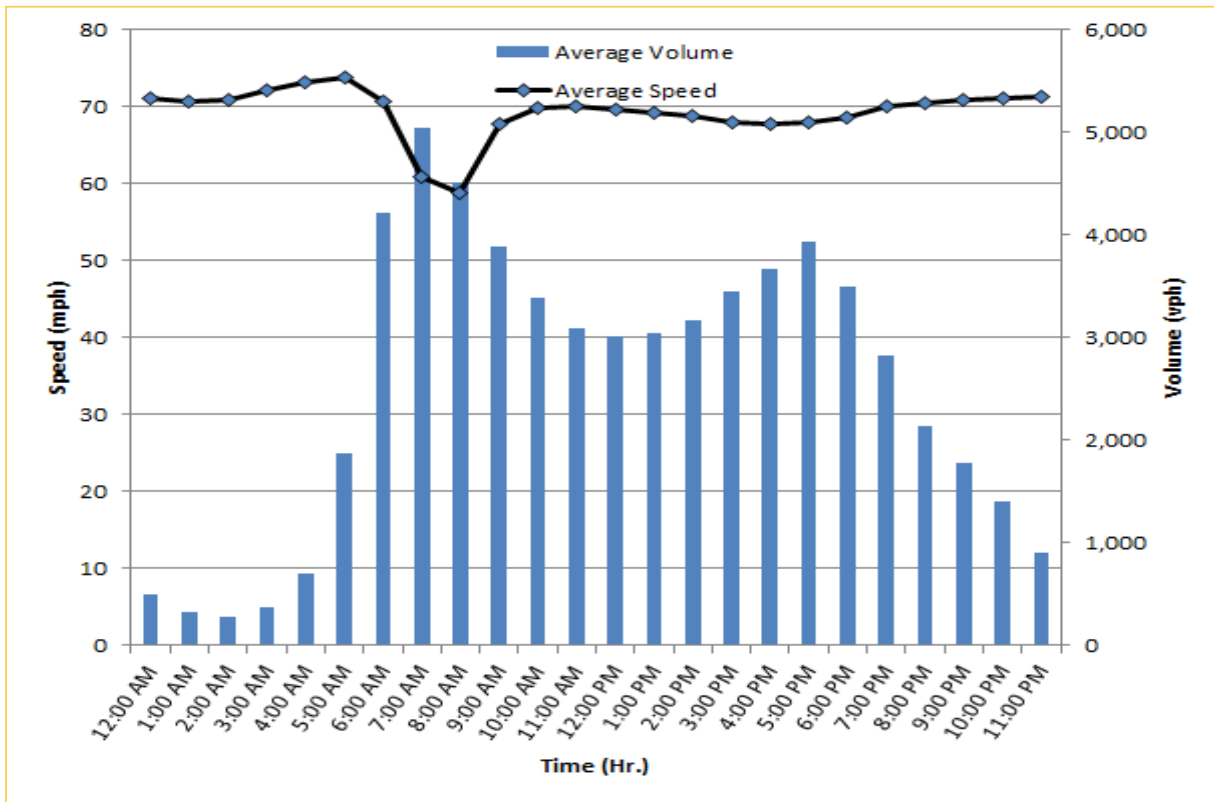
## TRAVEL TIME RELIABILITY REPORT

### Weekdays Speeds and Volumes by Time of Day\*

**I-75 Northbound: 5.4 Miles \*\***  
 From: West of SR 826  
 To: North of Florida's Turnpike

**I-75 Southbound: 5.4 Miles \*\***  
 From: North of Florida's Turnpike  
 To: West of SR 826

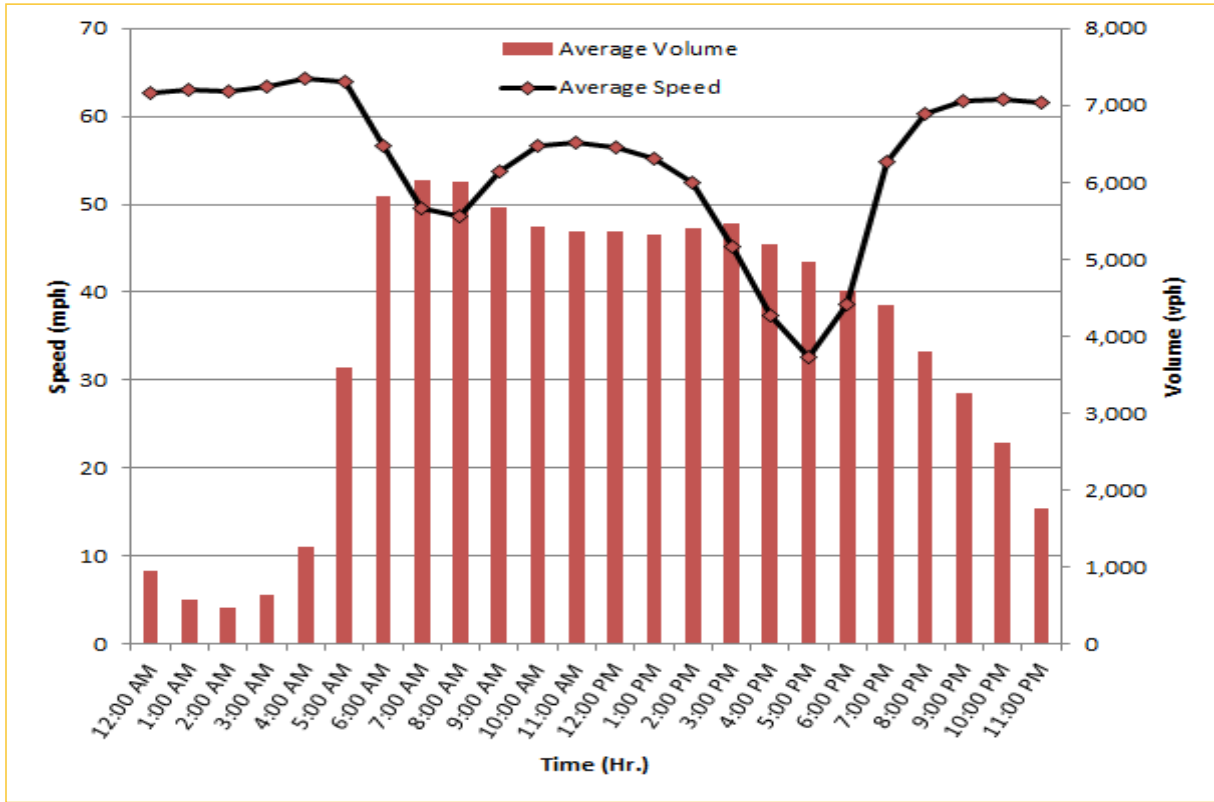
\* Twelve-month weekday average from February 1<sup>st</sup>, 2019 to January 31<sup>st</sup>, 2020.

\*\* Data obtained from Regional Integrated Transportation System (RITIS). Excludes express lanes.


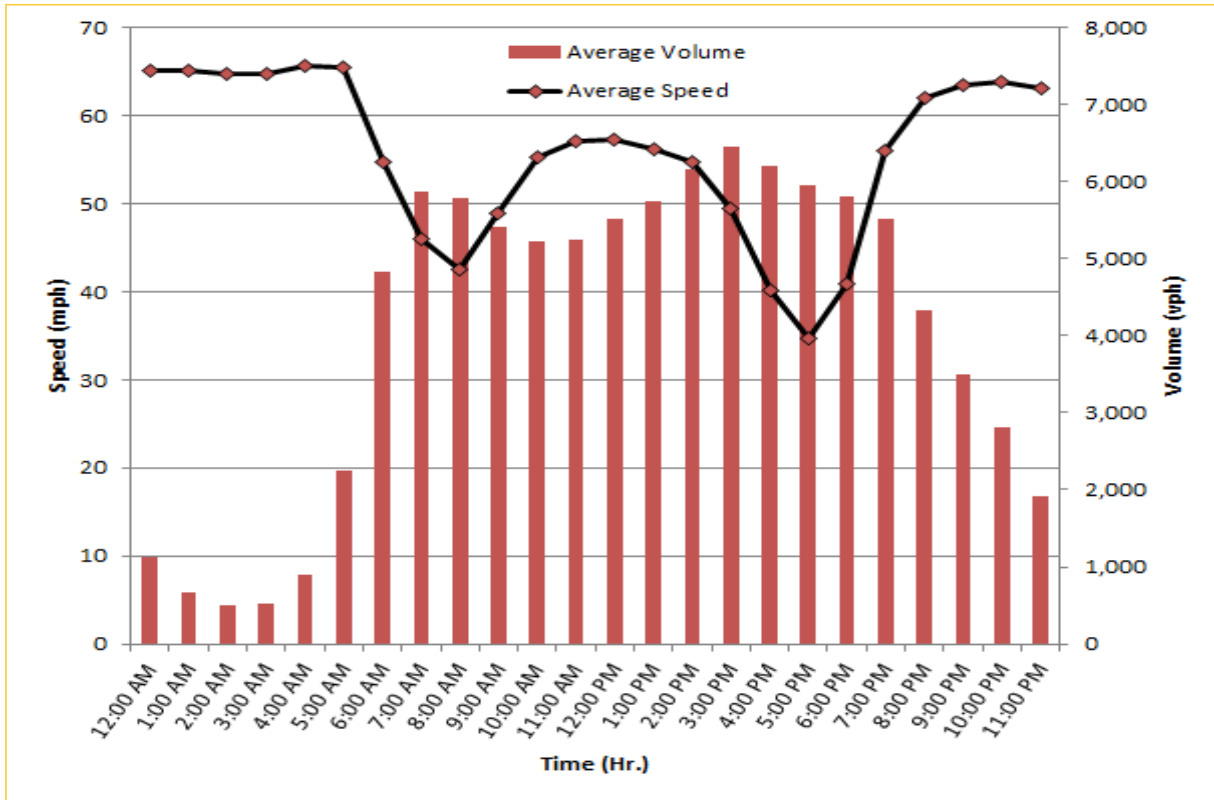
# TRAVEL TIME RELIABILITY REPORT

## Weekdays Speeds and Volumes by Time of Day\*

**SR 826 Northbound: 16.6 Miles**  
 From: US-1  
 To: North of NW 154 Street

**SR 826 Southbound: 16.6 Miles**  
 From: North of NW 154 Street  
 To: US-1

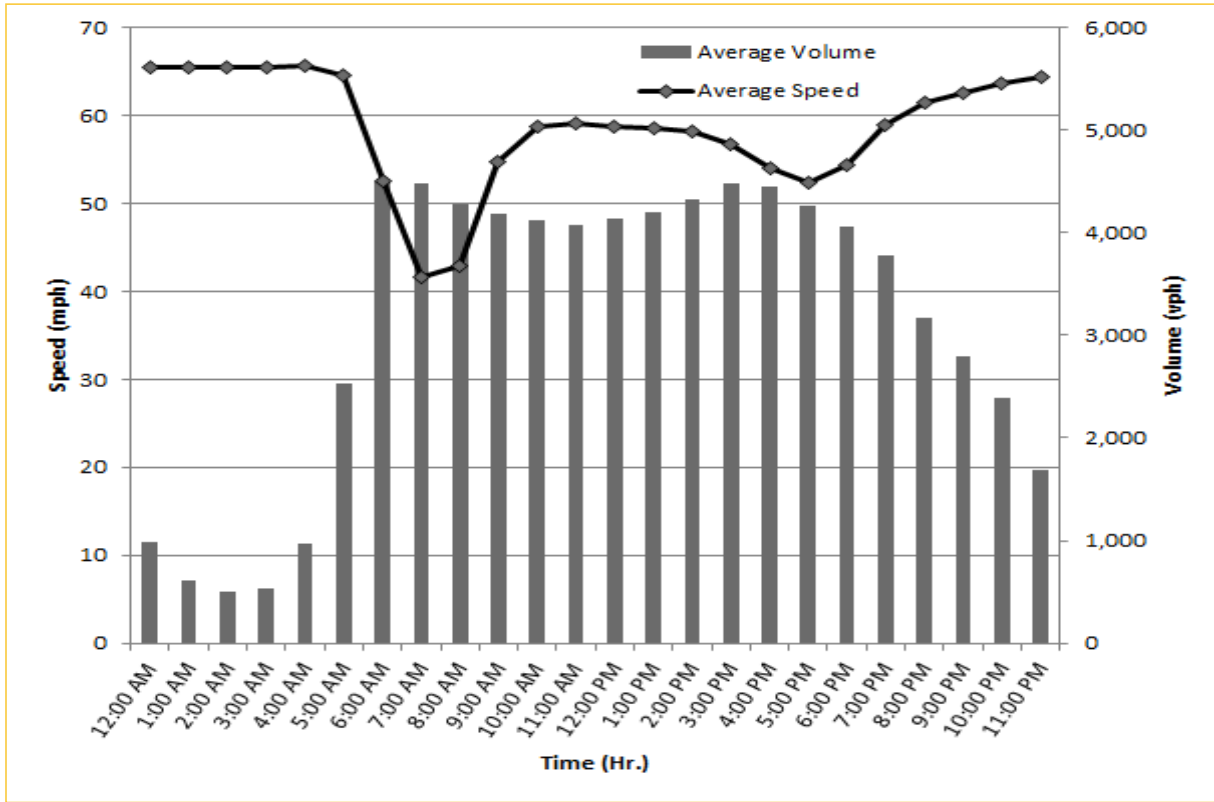



\* Twelve-month weekday average from February 1<sup>st</sup>, 2019 to January 31<sup>st</sup>, 2020. Excludes express lanes.

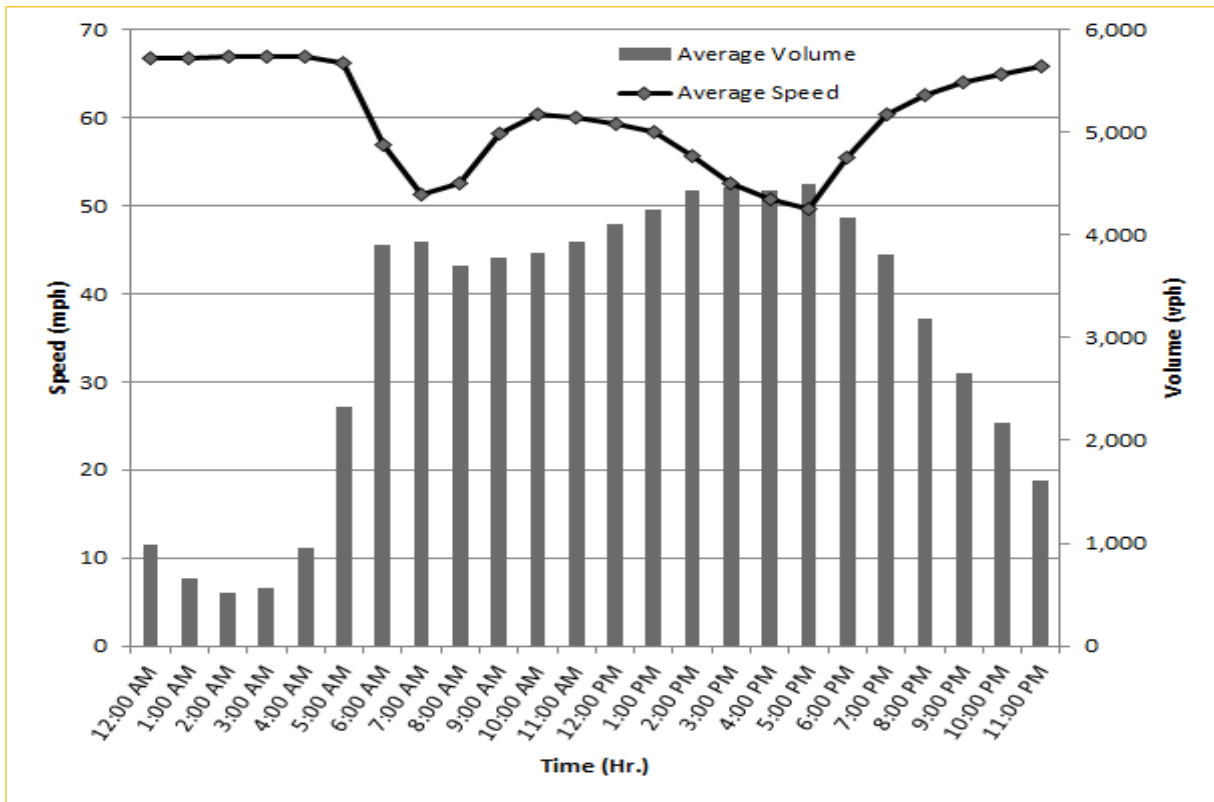
## TRAVEL TIME RELIABILITY REPORT

### Weekdays Speeds and Volumes by Time of Day\*

SR 826 Eastbound: 7.1 Miles  
 From: West of NW 67 Avenue  
 To: I-95

SR 826 Westbound: 7.1 Miles \*\*  
 From: I-95  
 To: West of NW 67 Avenue

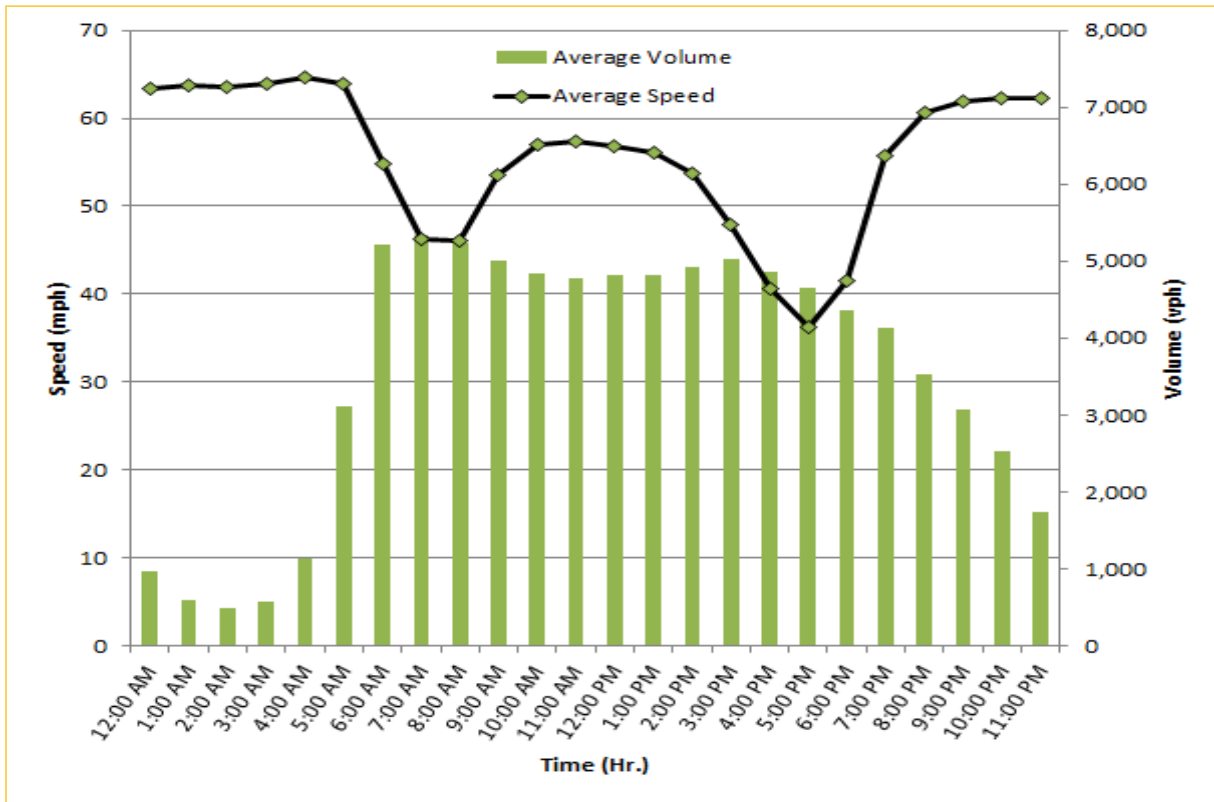
\* Twelve-month weekday average from February 1<sup>st</sup>, 2019 to January 31<sup>st</sup>, 2020.

\*\* Data obtained from Regional Integrated Transportation System (RITIS).

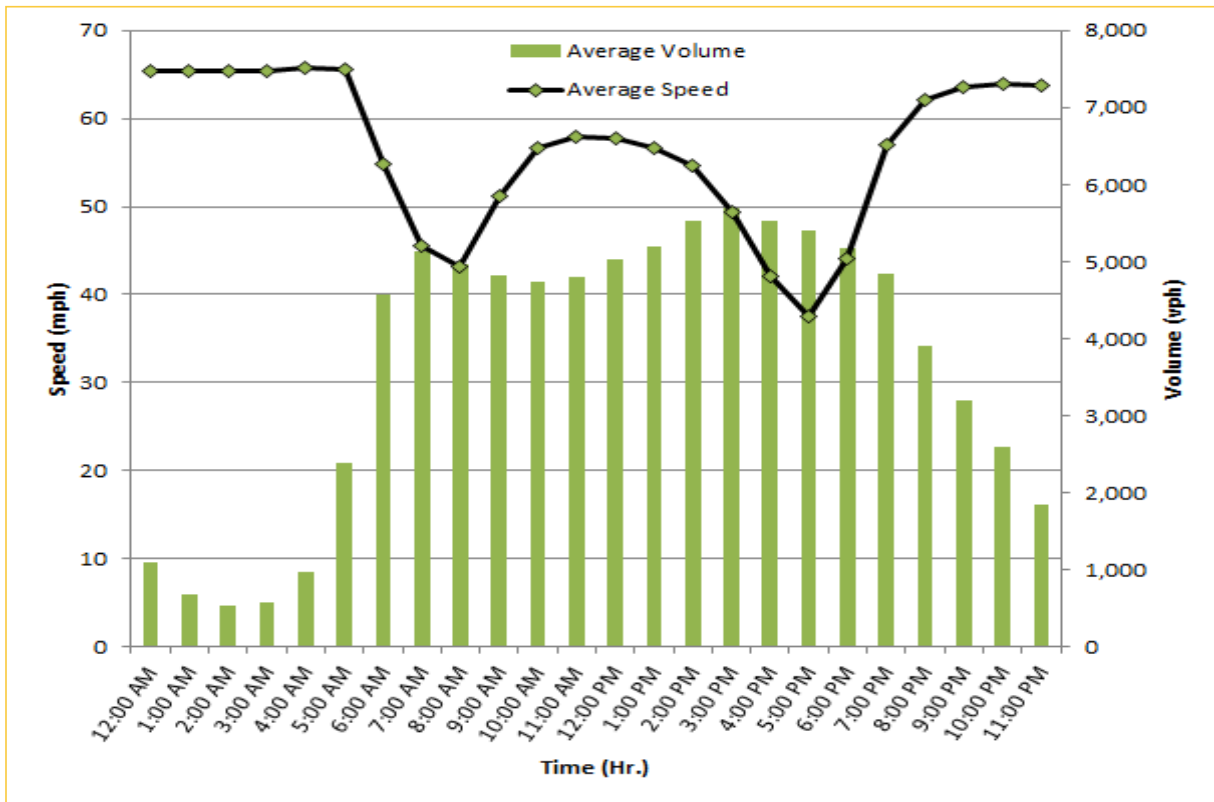
# TRAVEL TIME RELIABILITY REPORT

## Weekdays Speeds and Volumes by Time of Day\*

SR 826 Northbound/Eastbound : 24.2 Miles  
 From: US-1  
 To: I-95

SR 826 Southbound/Westbound: 24.2 Miles  
 From: I-95  
 To: US-1

\* Twelve-month weekday average from February 1<sup>st</sup>, 2019 to January 31<sup>st</sup>, 2020. Excludes express lanes.