

## TRAVEL TIME RELIABILITY REPORT

### Travel Time Index by Roadway\*

Time	I-95**		I-195**		I-75**		SR 826**					
	NB	SB	EB	WB	NB	SB	NB	EB	NE	SB	WB	SW
0:00	0.89	0.88	0.82	0.99	1.00	1.00	0.86	0.86	0.86	0.81	0.86	0.83
1:00	0.88	0.88	0.85	1.00	1.01	1.03	0.89	0.88	0.88	0.85	0.89	0.86
2:00	0.89	0.90	0.87	1.04	1.02	1.03	0.89	0.87	0.89	0.86	0.89	0.87
3:00	0.91	0.89	0.89	1.05	1.05	1.04	0.91	0.87	0.90	0.87	0.90	0.87
4:00	0.91	0.89	0.89	1.05	1.05	1.02	0.87	0.87	0.87	0.85	0.88	0.86
5:00	0.87	0.89	0.84	1.00	1.02	0.97	0.84	0.86	0.84	0.85	0.87	0.86
6:00	0.92	1.05	0.85	0.95	1.01	0.96	0.90	1.00	0.93	0.93	0.92	0.93
7:00	0.96	1.27	0.95	0.93	1.03	1.16	0.97	1.22	1.04	1.07	1.08	1.07
8:00	0.99	1.36	1.21	0.94	1.05	1.30	0.97	1.23	1.05	1.16	1.12	1.15
9:00	0.96	1.23	1.17	0.95	1.02	1.07	0.94	1.01	0.96	1.05	1.00	1.03
10:00	0.93	1.11	0.97	0.97	1.02	0.99	0.92	0.93	0.92	0.97	0.99	0.97
11:00	0.95	1.06	0.91	0.98	1.01	0.99	0.92	0.92	0.92	0.96	0.94	0.95
12:00	0.98	1.06	0.88	0.99	1.00	1.00	0.92	0.92	0.92	0.97	0.93	0.96
13:00	1.03	1.07	0.88	1.01	1.00	1.00	0.92	0.93	0.92	0.99	0.95	0.98
14:00	1.10	1.10	0.97	1.01	1.01	1.02	0.96	0.96	0.96	1.01	0.97	1.00
15:00	1.32	1.16	1.03	1.08	1.01	1.02	1.06	0.98	1.03	1.08	1.04	1.07
16:00	1.58	1.25	0.92	1.22	1.03	1.02	1.19	1.06	1.15	1.25	1.16	1.23
17:00	1.62	1.25	0.91	1.23	1.13	1.00	1.23	1.09	1.19	1.33	1.19	1.29
18:00	1.33	1.17	0.93	1.09	1.10	0.98	1.05	1.04	1.05	1.14	1.04	1.11
19:00	1.06	1.01	0.86	0.99	0.99	0.98	0.88	0.91	0.89	0.90	0.89	0.90
20:00	0.96	0.96	0.83	0.97	0.99	1.00	0.84	0.88	0.85	0.83	0.88	0.84
21:00	0.94	1.00	0.82	0.97	0.99	0.98	0.83	0.86	0.84	0.80	0.86	0.82
22:00	0.93	1.00	0.83	0.98	0.98	0.98	0.85	0.85	0.85	0.80	0.85	0.81
23:00	0.93	0.94	0.82	0.98	1.00	0.99	0.84	0.85	0.84	0.80	0.85	0.81
FFS***	62 mph	62 mph	59 mph	55 mph	69 mph	66 mph	60 mph	63 mph	61 mph	62 mph	62 mph	62 mph

Maximum Travel Time Index.

**Travel Time Index (TTI)** is a measure of average conditions that indicates how much longer, **on average**, travel times are during congestion compared to during light traffic.

**Real World Example:** A TTI of 1.60 means that for a trip that usually takes 10 minutes in light traffic, a traveler should budget for an additional 6 minutes **on average**.



\* Twelve-month weekday average from January 1st, 2020 to December 31st, 2020.

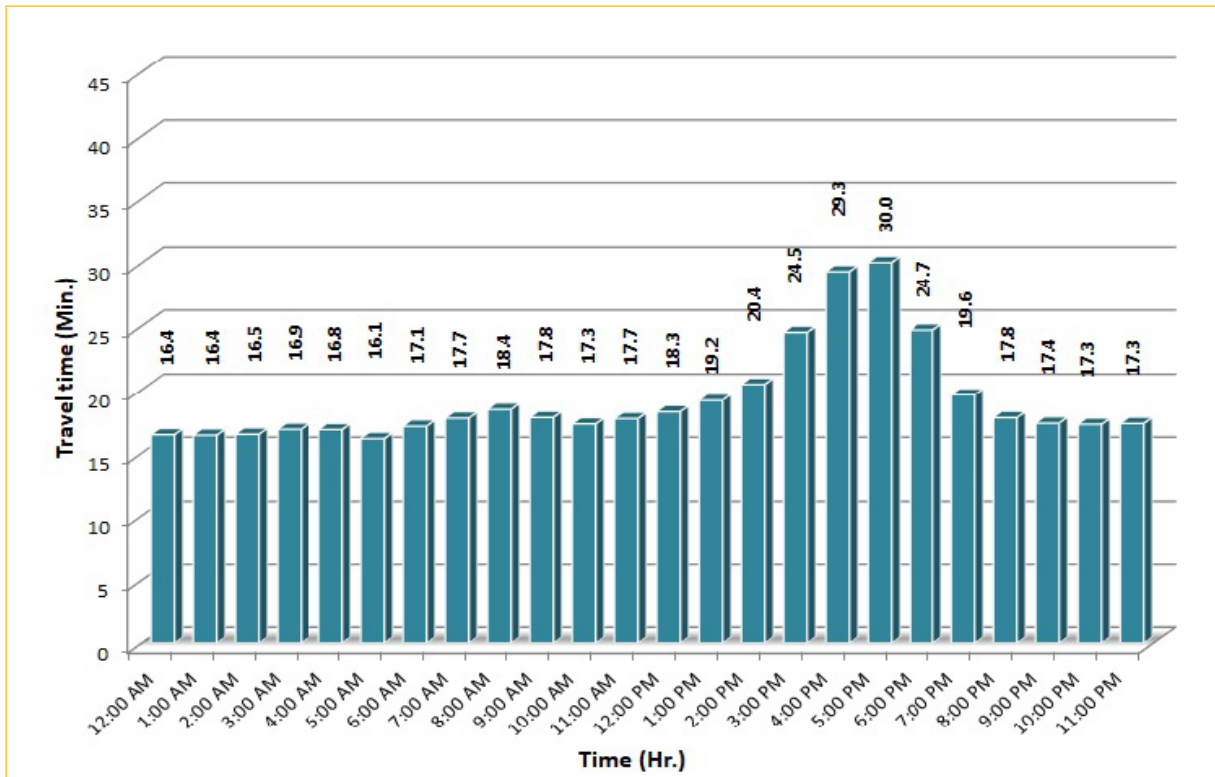
\*\* Data obtained from Regional Integrated Transportation System (RITIS), Probe Data Analytics Suite.

\*\*\* Free Flow Speed.

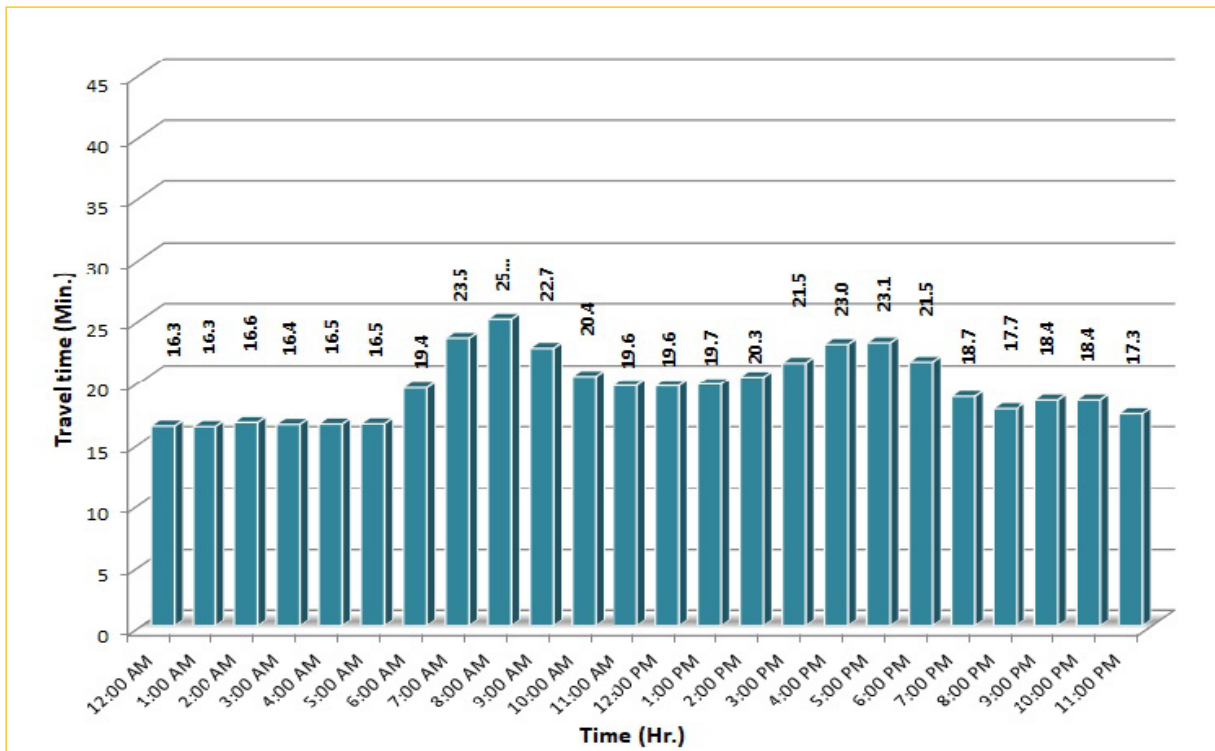
## TRAVEL TIME RELIABILITY REPORT

### Weekdays Travel Times by Time of Day\*

**I-95 Northbound: 17.3 Miles\*\***  
From: US-1  
To: Miami-Dade / Broward County Line



**I-95 Southbound: 17.3 Miles\*\***  
From: Miami-Dade / Broward County Line  
To: US-1



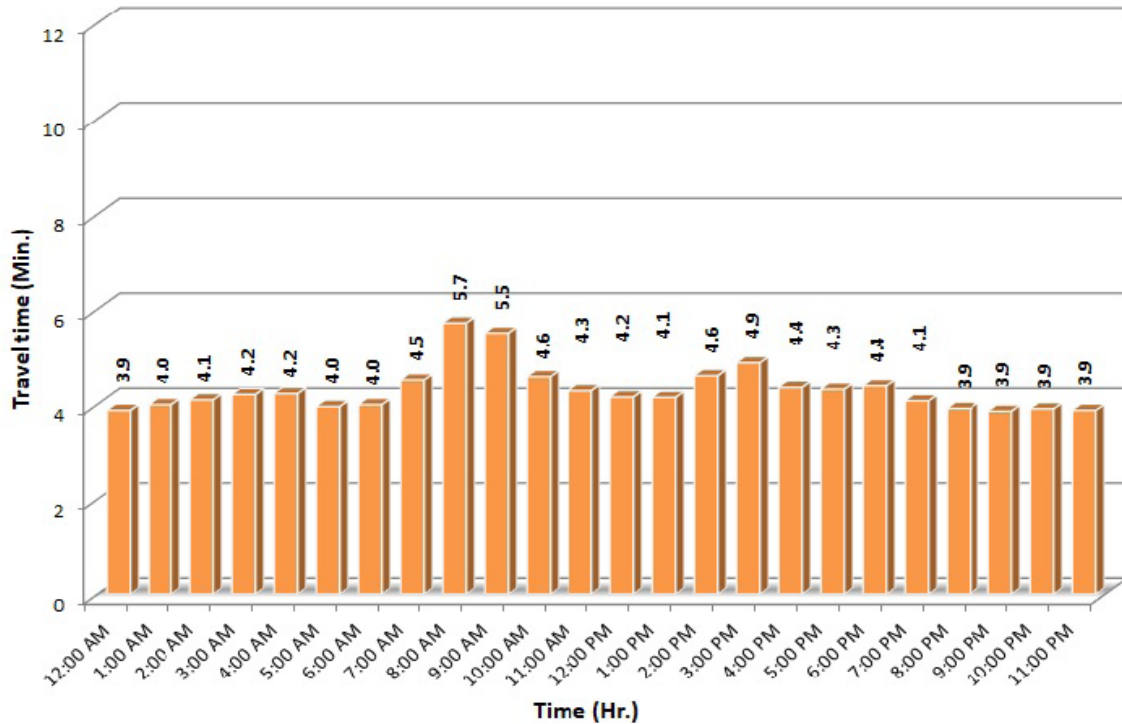
\* Twelve-month weekday average from January 1st, 2020 to December 31st, 2020.

\*\* Data obtained from Regional Integrated Transportation System (RITIS), Probe Data Analytics Suite. Excludes express lanes.

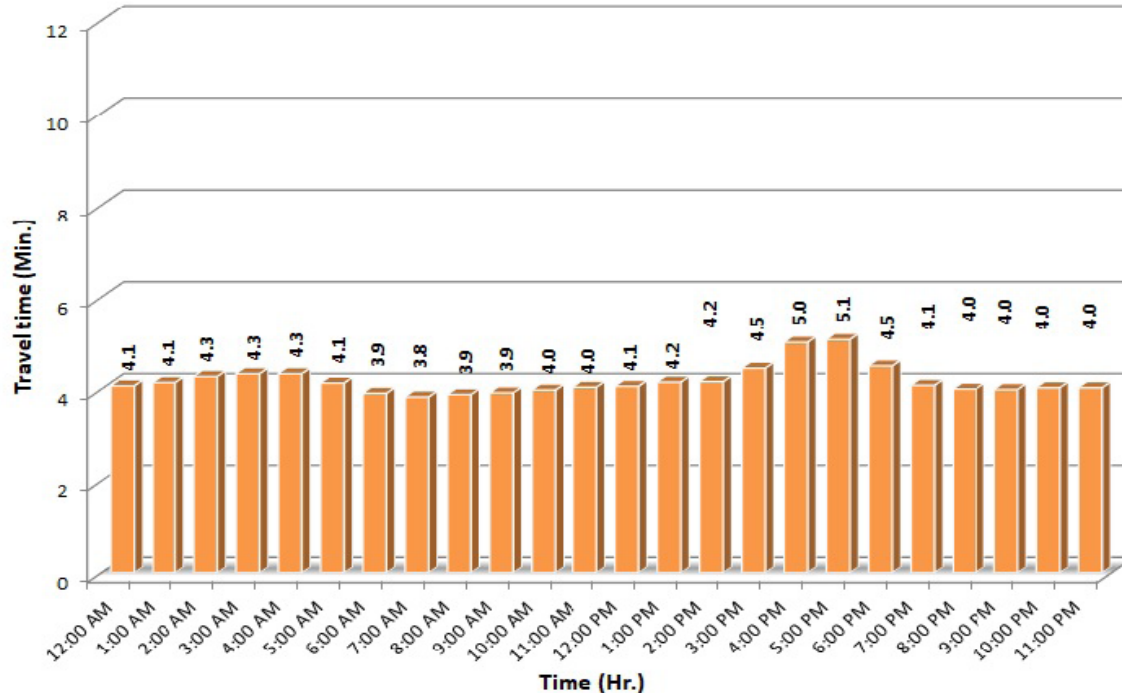
## TRAVEL TIME RELIABILITY REPORT

### Weekdays Travel Times by Time of Day\*

**I-195 Eastbound: 4.9 Miles\*\***  
From: West of North Miami Avenue  
To: West of Alton Road



**I-195 Westbound: 4.9 Miles\*\***  
From: West of Alton Road  
To: West of North Miami Avenue



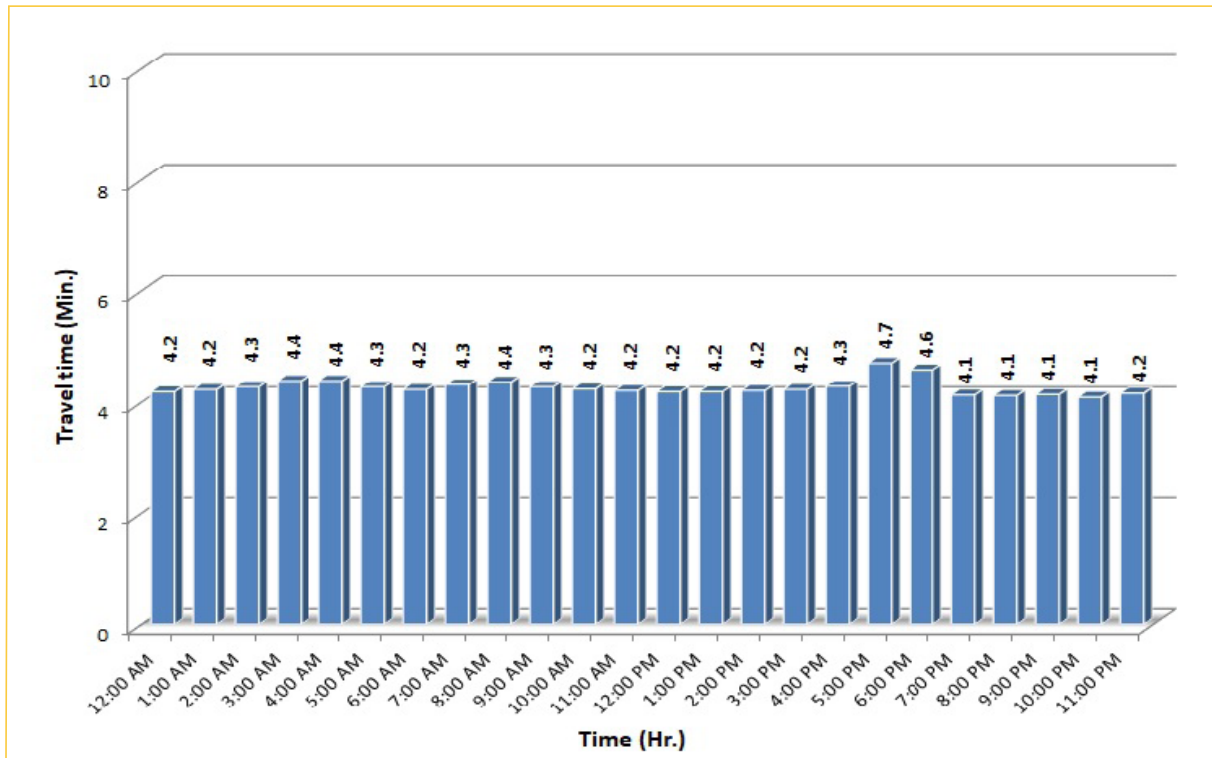
\* Twelve-month weekday average from January 1st, 2020 to December 31st, 2020.

\*\* Data obtained from Regional Integrated Transportation System (RITIS), Probe Data Analytics Suite.

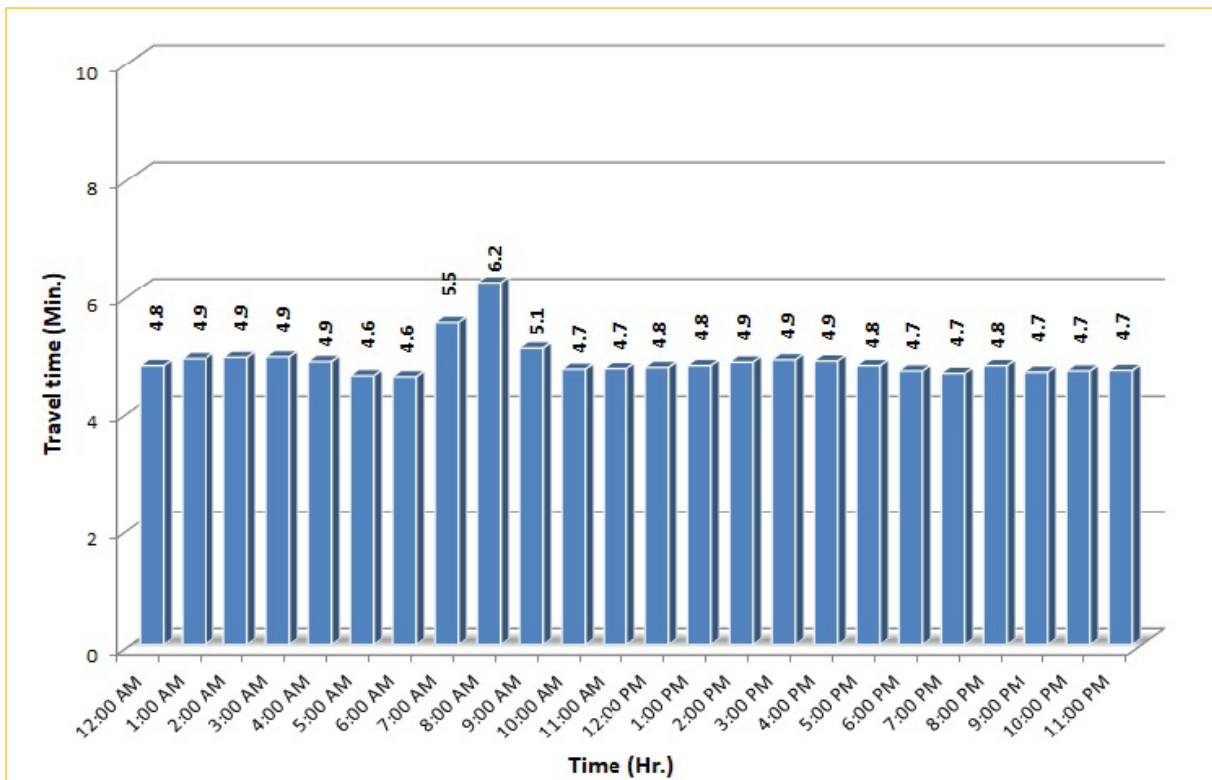
## TRAVEL TIME RELIABILITY REPORT

### Weekdays Travel Times by Time of Day\*

**I-75 Northbound: 5.4 Miles\*\***  
From: West of SR 826  
To: North of Florida's Turnpike



**I-75 Southbound: 5.4 Miles\*\***  
From: North of Florida's Turnpike  
To: West of SR 826



\* Twelve-month weekday average from January 1st, 2020 to December 31st, 2020.

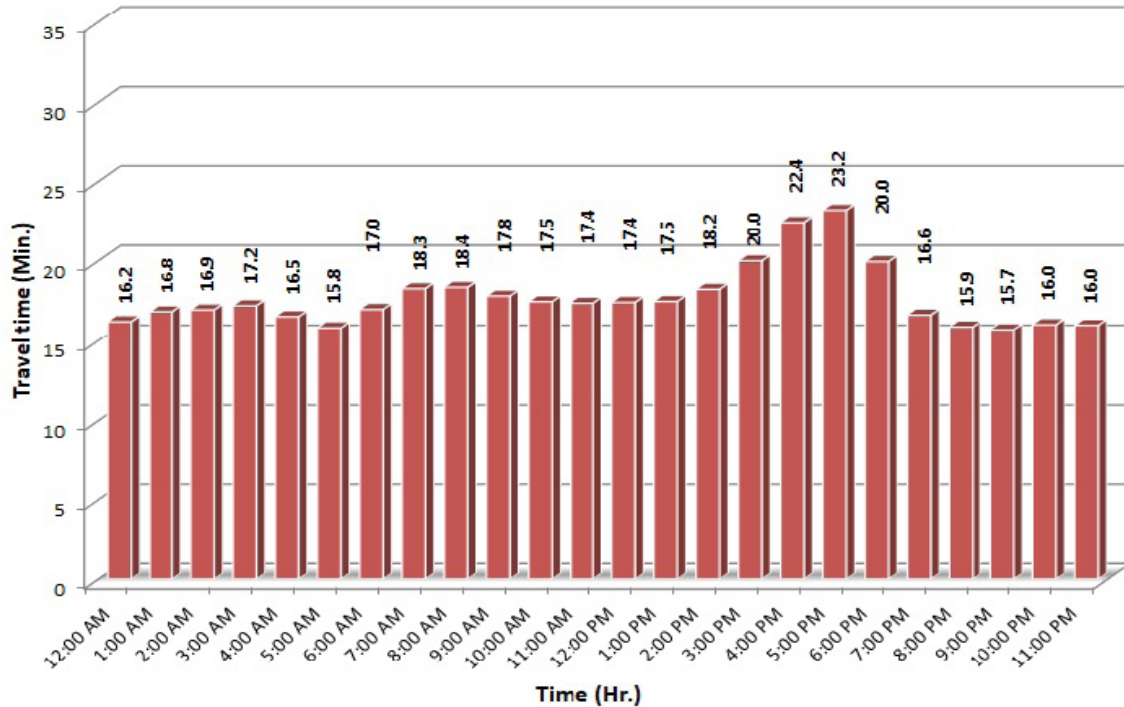
\*\* Data obtained from Regional Integrated Transportation System (RITIS), Probe Data Analytics Suite. Excludes express lanes.




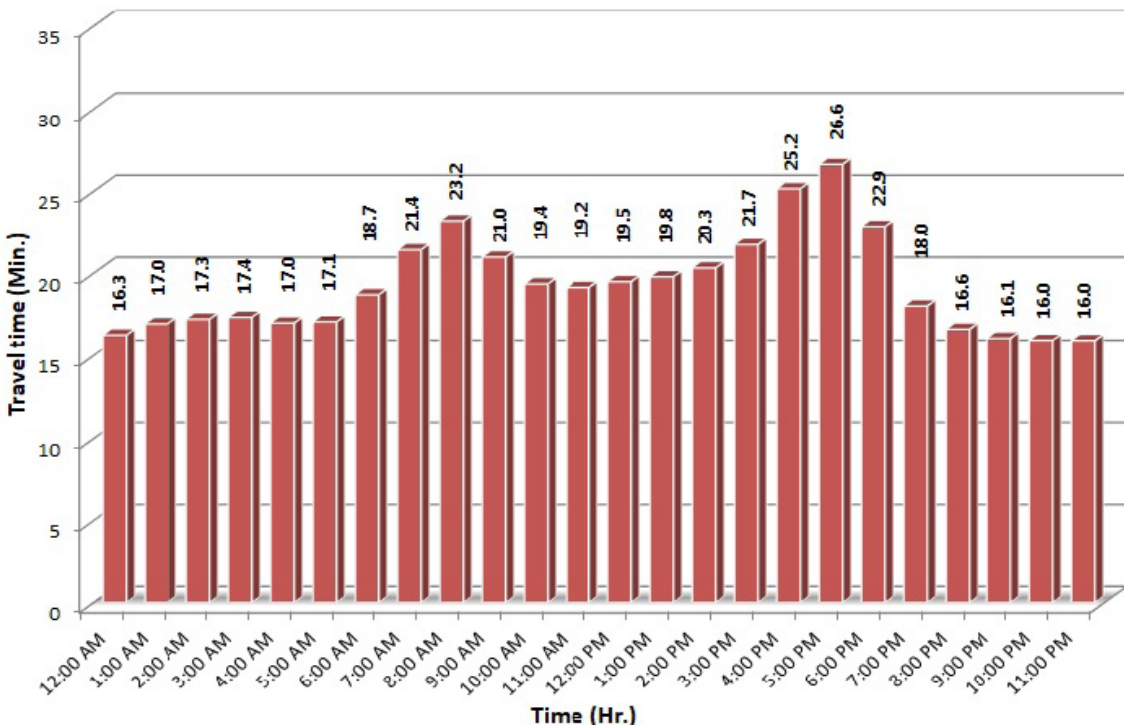
## TRAVEL TIME RELIABILITY REPORT

### Weekdays Travel Times by Time of Day\*

**SR 826 Northbound: 16.6 Miles\*\***  
From: US-1  
To: North of NW 154 Street

**SR 826 Southbound: 16.6 Miles\*\***  
From: North of NW 154 Street  
To: US-1

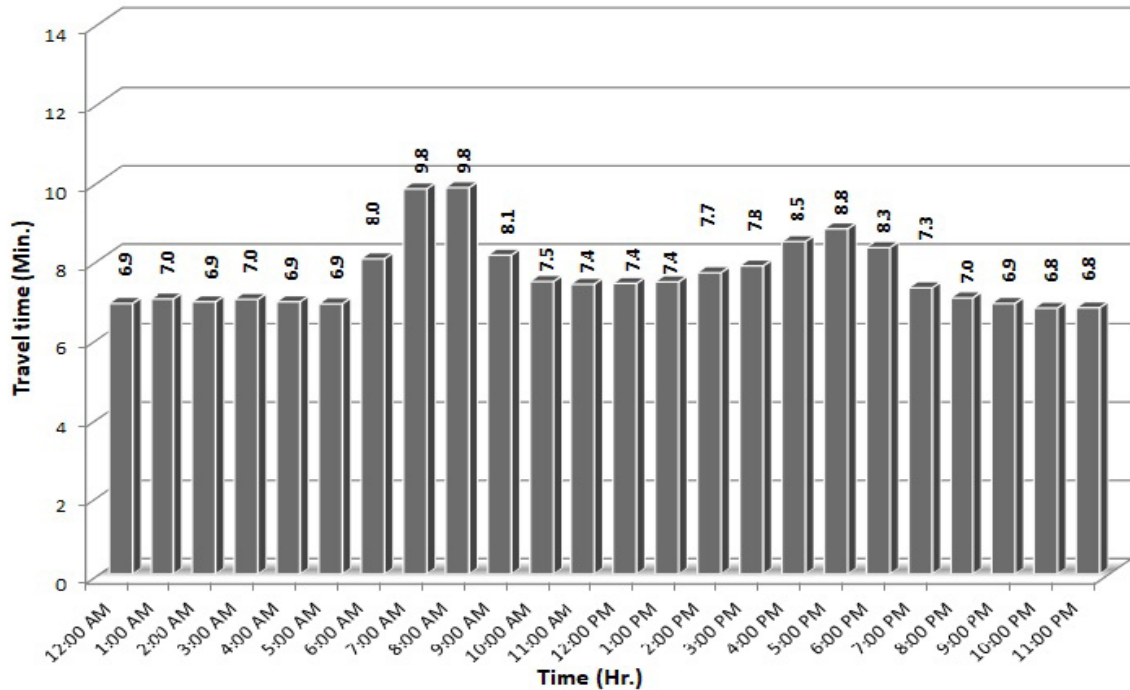
\* Twelve-month weekday average from January 1st, 2020 to December 31st, 2020.

\*\* Data obtained from Regional Integrated Transportation System (RITIS), Probe Data Analytics Suite. Excludes express lanes.

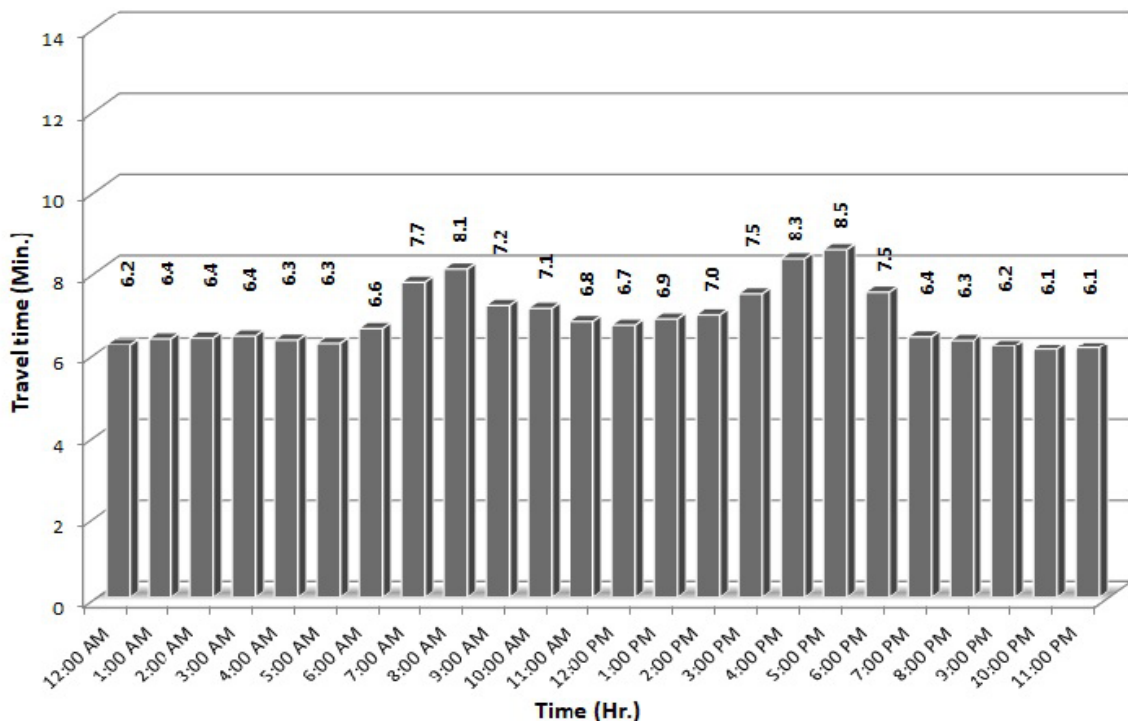
## TRAVEL TIME RELIABILITY REPORT

### Weekdays Travel Times by Time of Day\*

**SR 826 Eastbound: 7.1 Miles\*\***  
From: West of NW 67 Avenue  
To: I-95

**SR 826 Westbound: 7.1 Miles\*\***  
From: I-95  
To: West of NW 67 Avenue

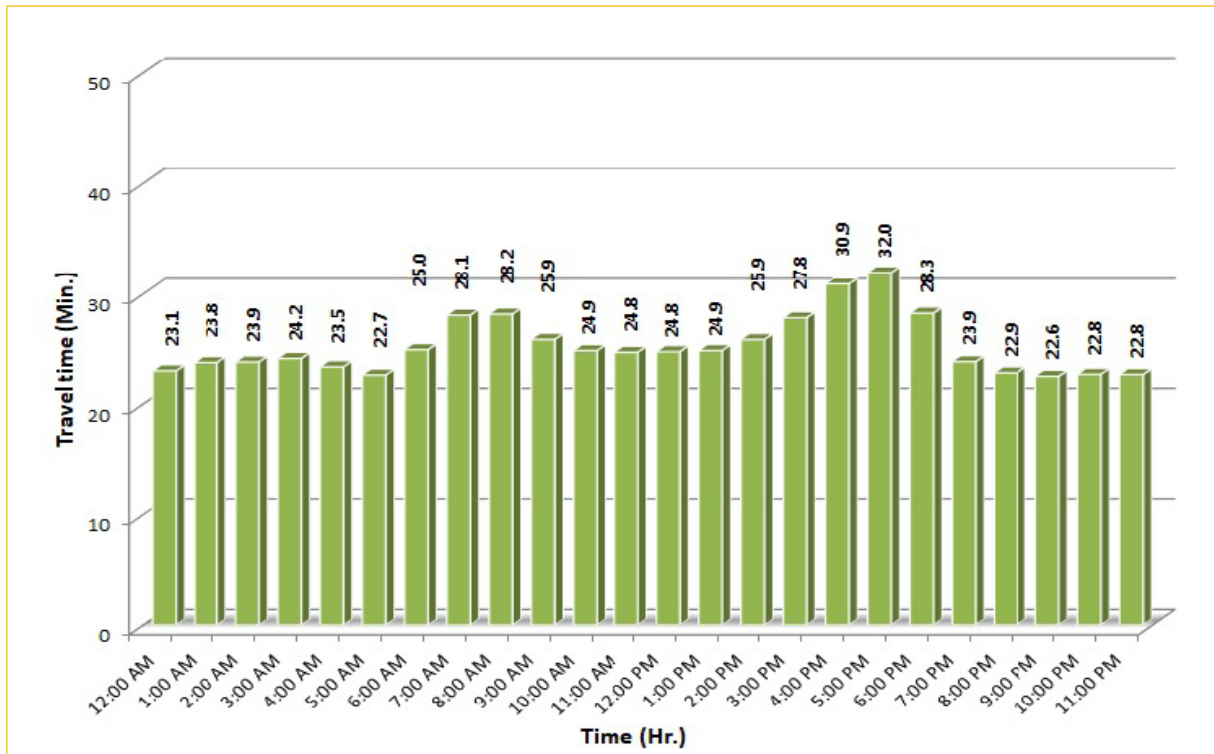
\* Twelve-month weekday average from January 1st, 2020 to December 31st, 2020.

\*\* Data obtained from Regional Integrated Transportation System (RITIS), Probe Data Analytics Suite.

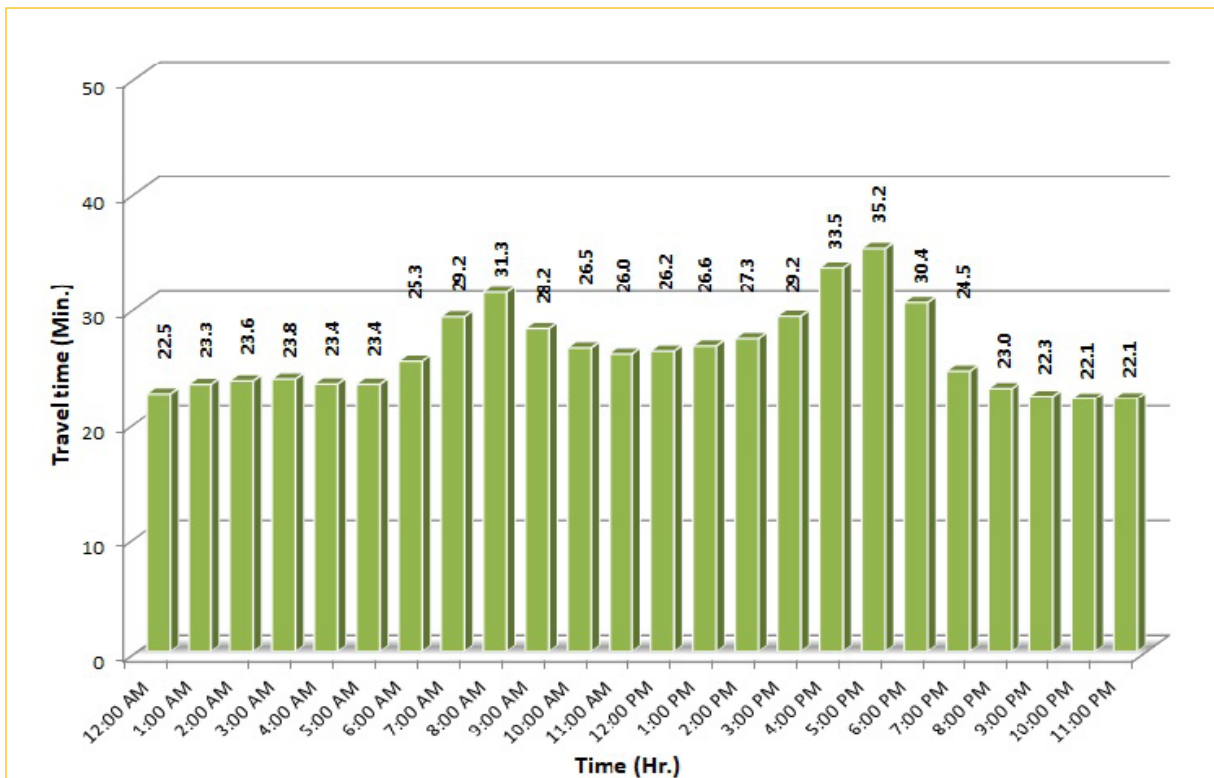
## TRAVEL TIME RELIABILITY REPORT

### Weekdays Travel Times by Time of Day\*

SR 826 Northbound/Eastbound : 24.2 Miles\*\*  
From: US-1  
To: I-95



SR 826 Southbound/Westbound: 24.2 Miles\*\*  
From: I-95  
To: US-1



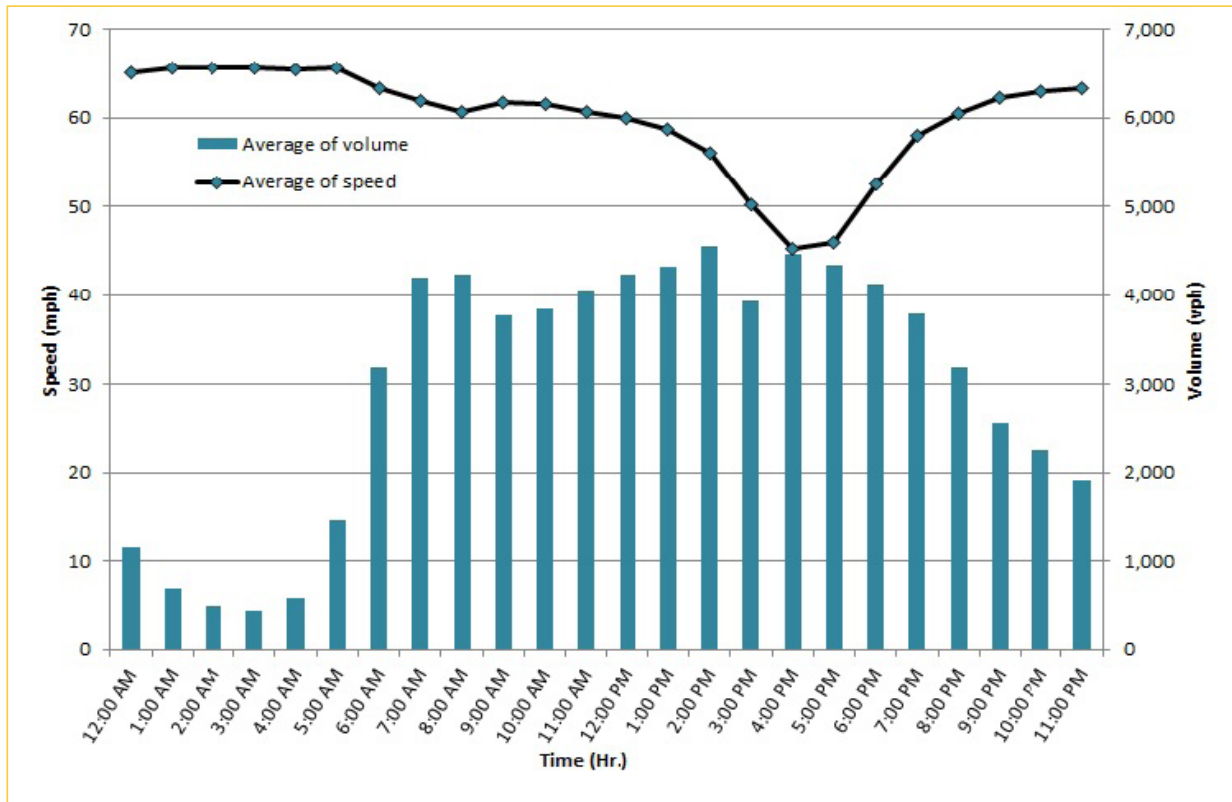
\* Twelve-month weekday average from January 1st, 2020 to December 31st, 2020.

\*\* Data obtained from Regional Integrated Transportation System (RITIS), Probe Data Analytics Suite. Excludes express lanes.

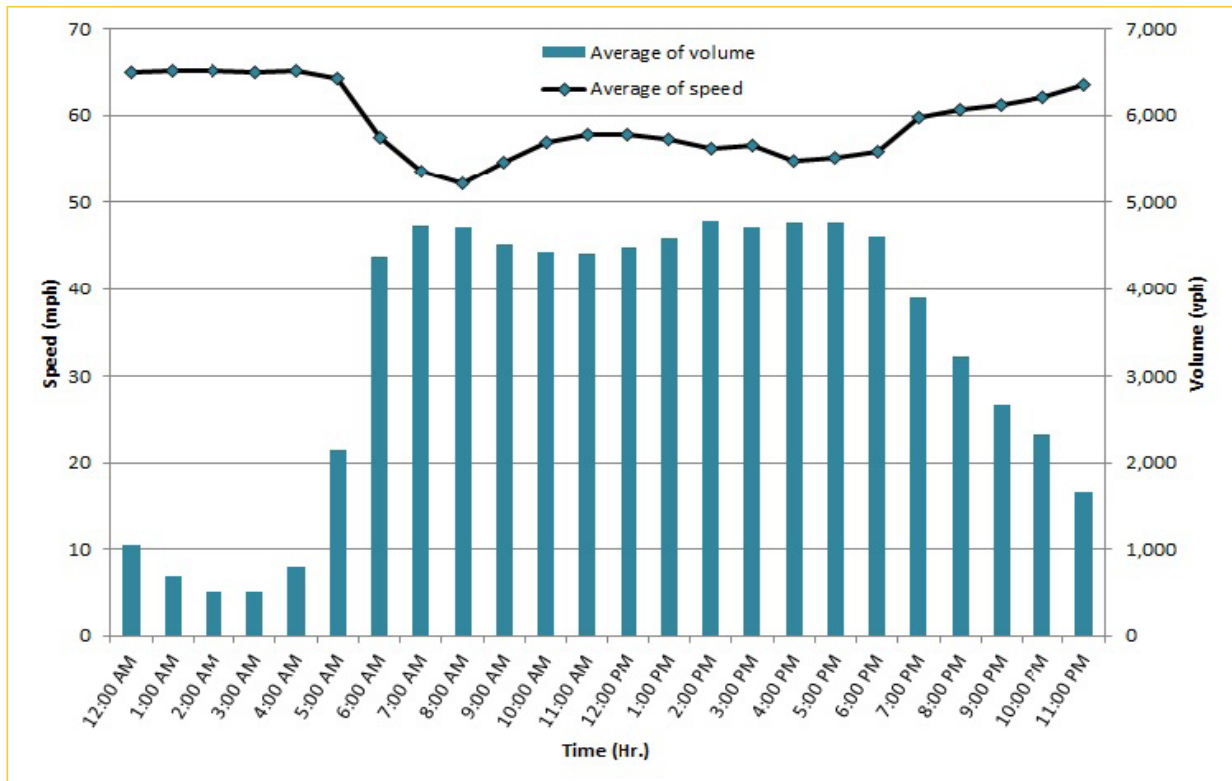
## TRAVEL TIME RELIABILITY REPORT

### Weekdays Speeds and Volumes by Time of Day\*

**I-95 Northbound: 17.3 Miles\*\***  
From: US-1  
To: Miami-Dade / Broward County Line



**I-95 Southbound: 17.3 Miles\*\***  
From: Miami-Dade / Broward County Line  
To: US-1



\* Twelve-month weekday average from January 1st, 2020 to December 31st, 2020.

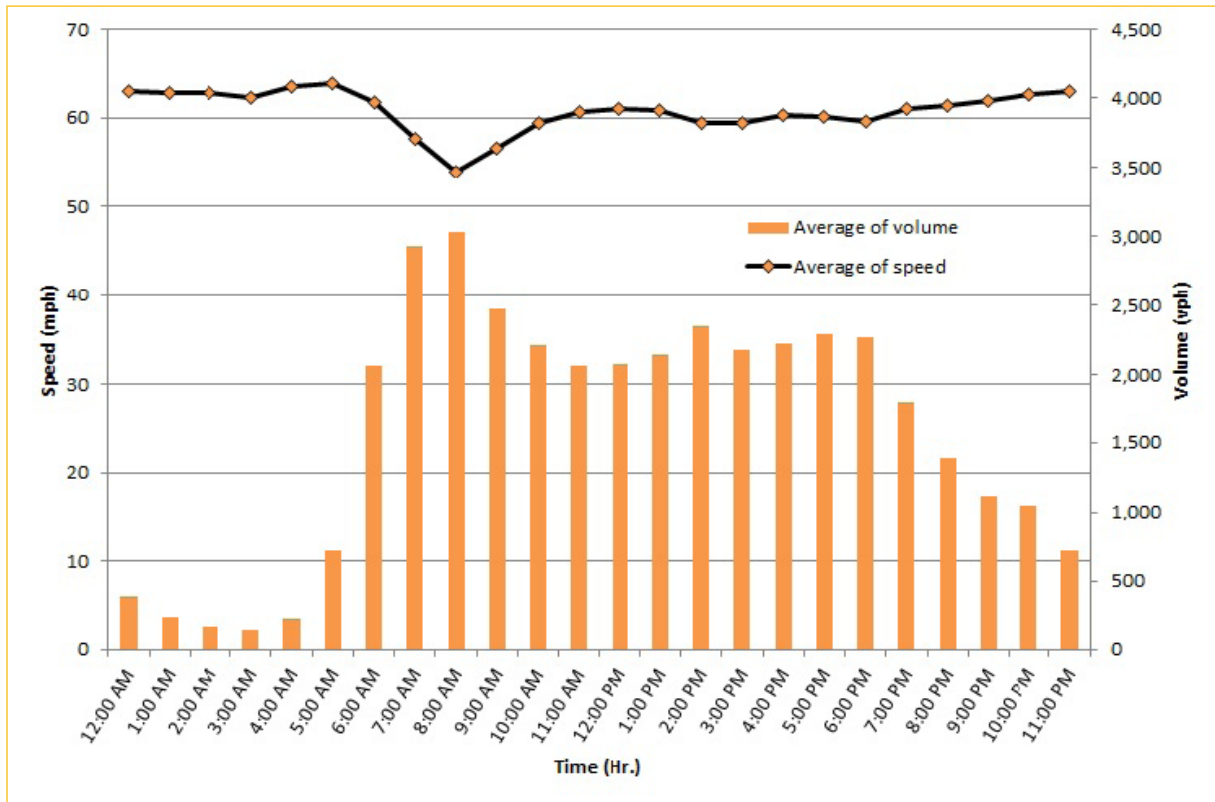
\*\* Data obtained from Regional Integrated Transportation System (RITIS). Excludes express lanes.



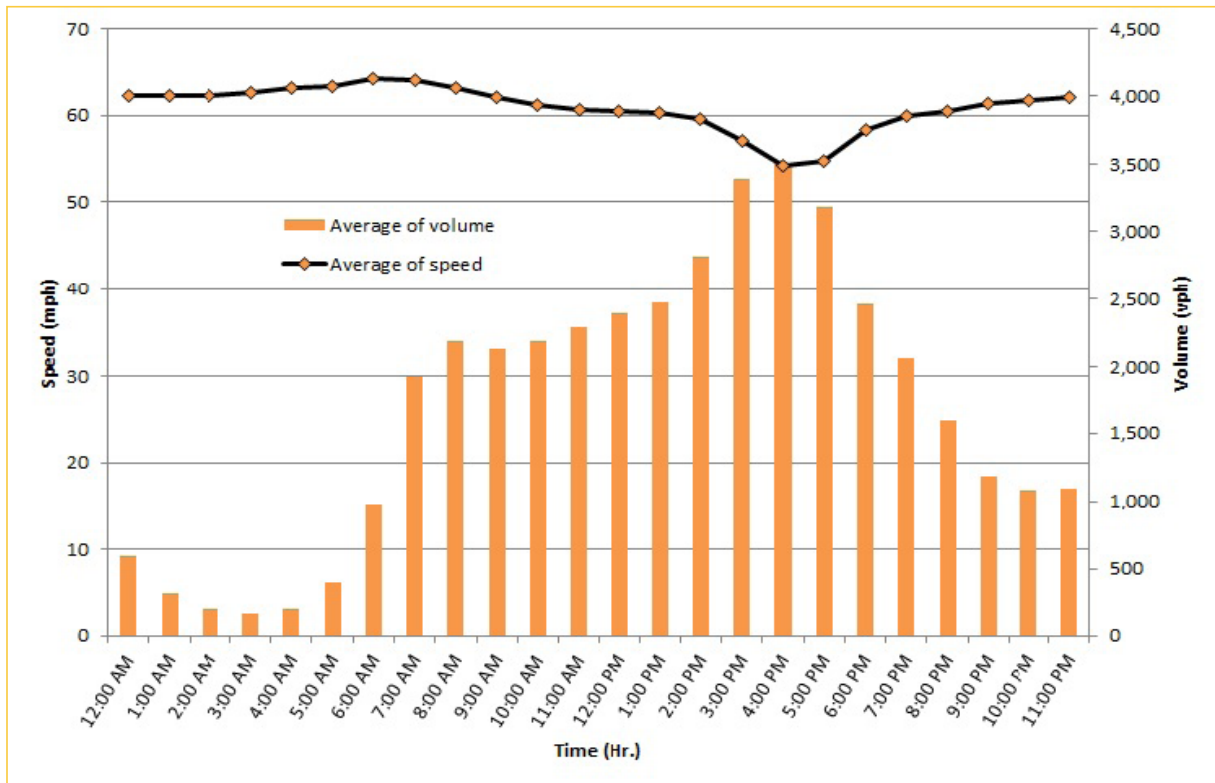
## TRAVEL TIME RELIABILITY REPORT

### Weekdays Speeds and Volumes by Time of Day\*

**I-195 Eastbound: 4.9 Miles\*\***  
From: West of North Miami Avenue  
To: West of Alton Road



**I-195 Westbound: 4.9 Miles\*\***  
From: West of Alton Road  
To: West of North Miami Avenue



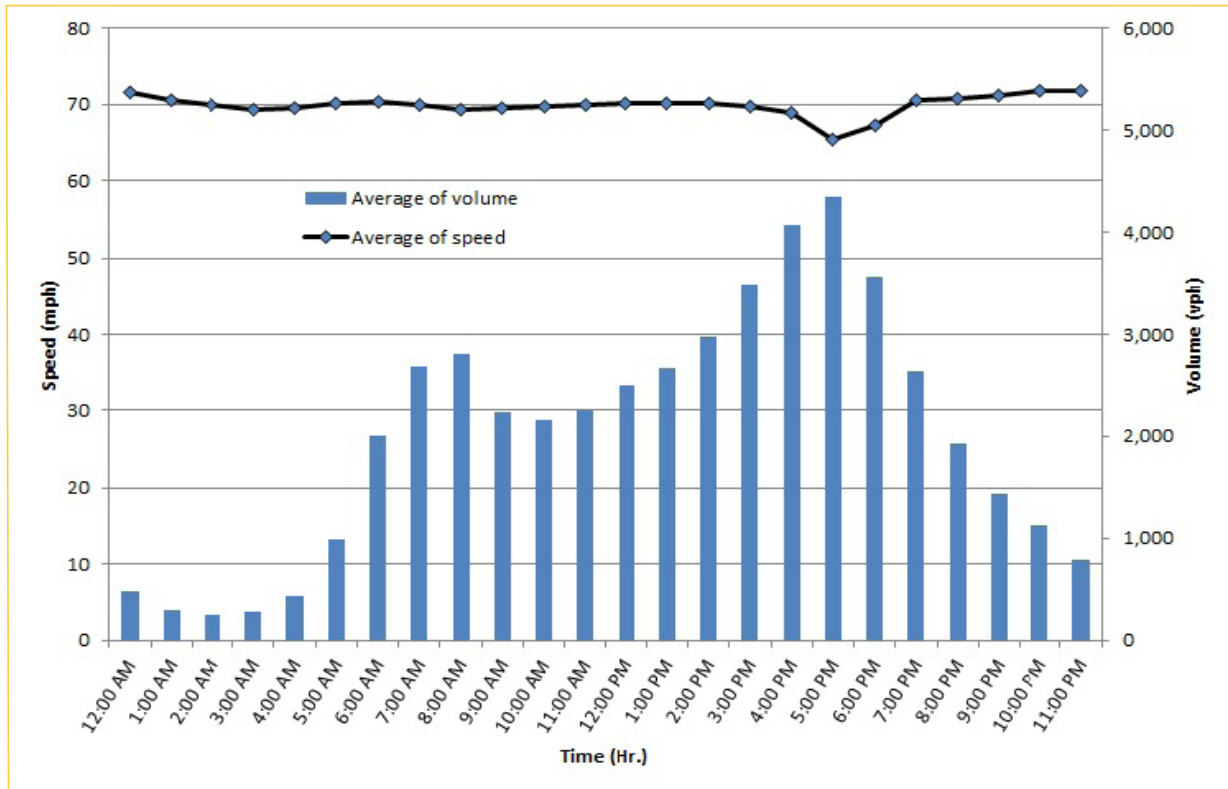
\* Twelve-month weekday average from January 1st, 2020 to December 31st, 2020.

\*\* Data obtained from Regional Integrated Transportation System (RITIS).

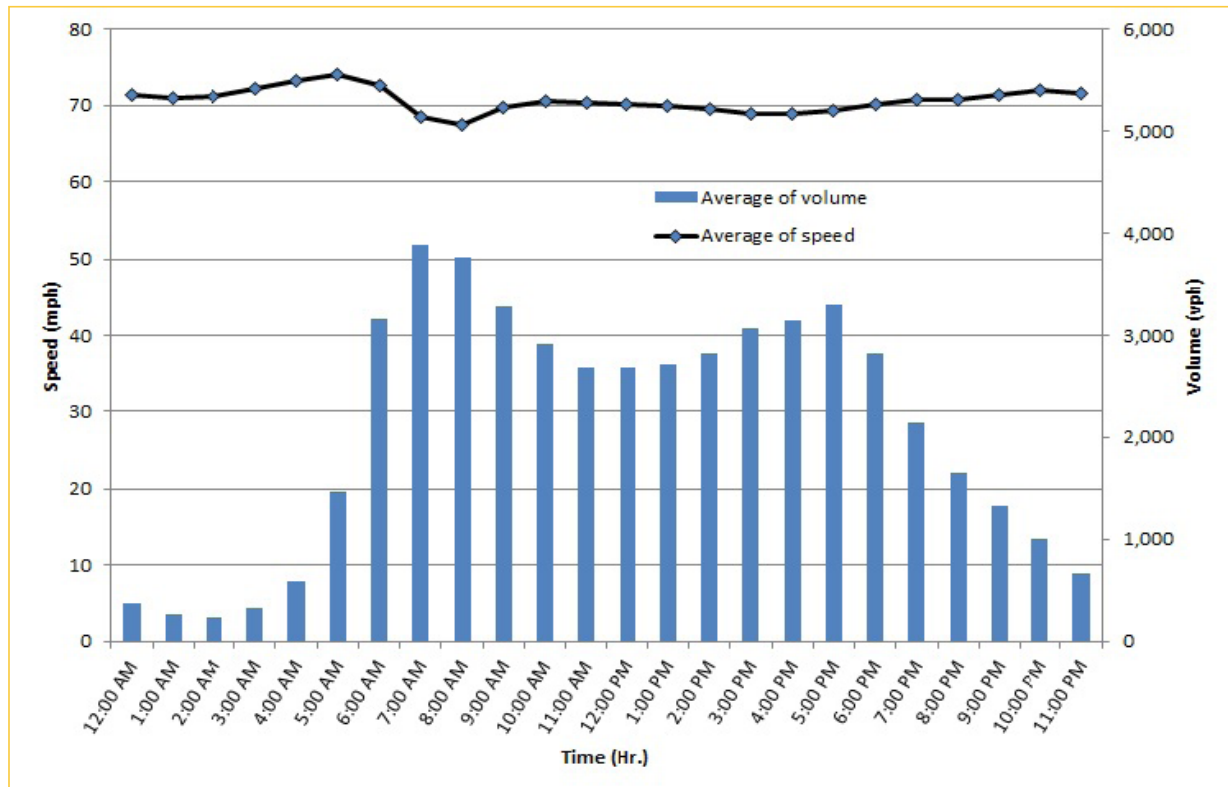
## TRAVEL TIME RELIABILITY REPORT

### Weekdays Speeds and Volumes by Time of Day\*

**I-75 Northbound: 5.4 Miles \*\***  
From: West of SR 826  
To: North of Florida's Turnpike



**I-75 Southbound: 5.4 Miles \*\***  
From: North of Florida's Turnpike  
To: West of SR 826



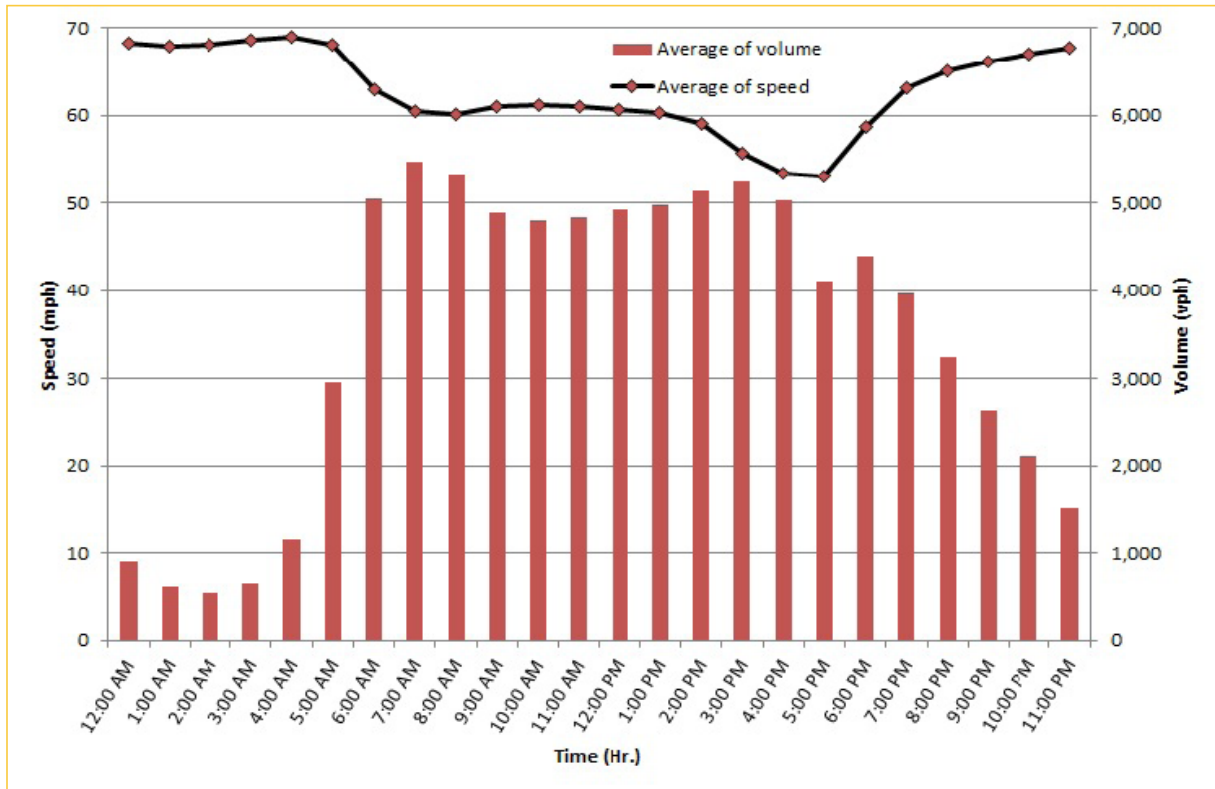
\* Twelve-month weekday average from January 1st, 2020 to December 31st, 2020.

\*\* Data obtained from Regional Integrated Transportation System (RITIS). Excludes express lanes.

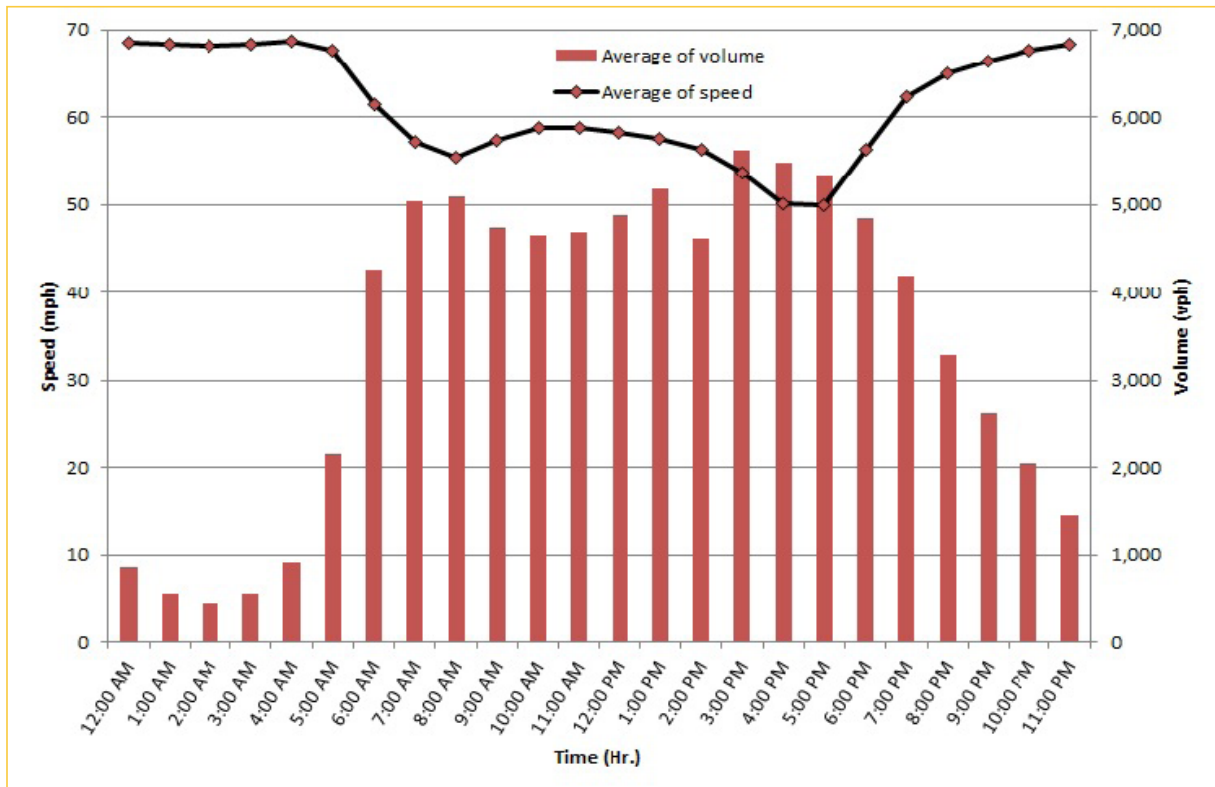
## TRAVEL TIME RELIABILITY REPORT

### Weekdays Speeds and Volumes by Time of Day\*

SR 826 Northbound: 16.6 Miles\*\*  
From: US-1  
To: North of NW 154 Street

SR 826 Southbound: 16.6 Miles\*\*  
From: North of NW 154 Street  
To: US-1

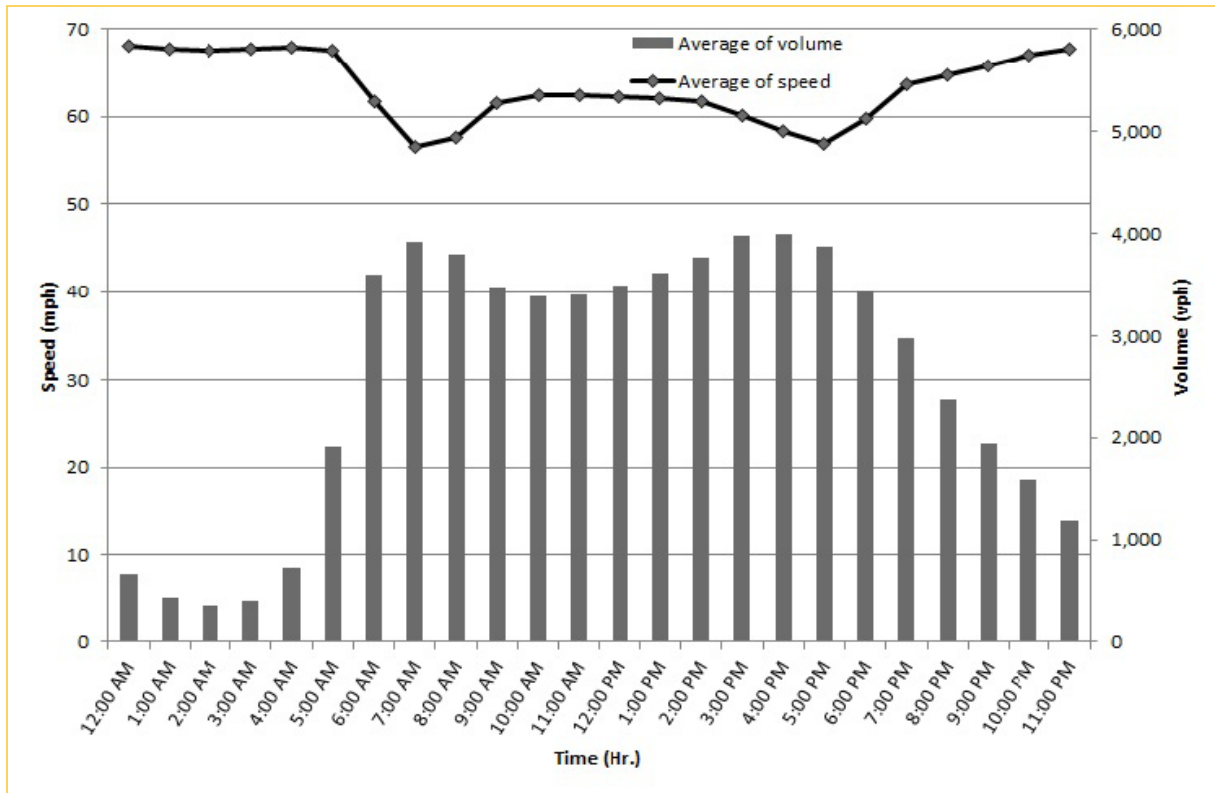
\* Twelve-month weekday average from January 1st, 2020 to December 31st, 2020.

\*\* Data obtained from Regional Integrated Transportation System (RITIS). Excludes express lanes.

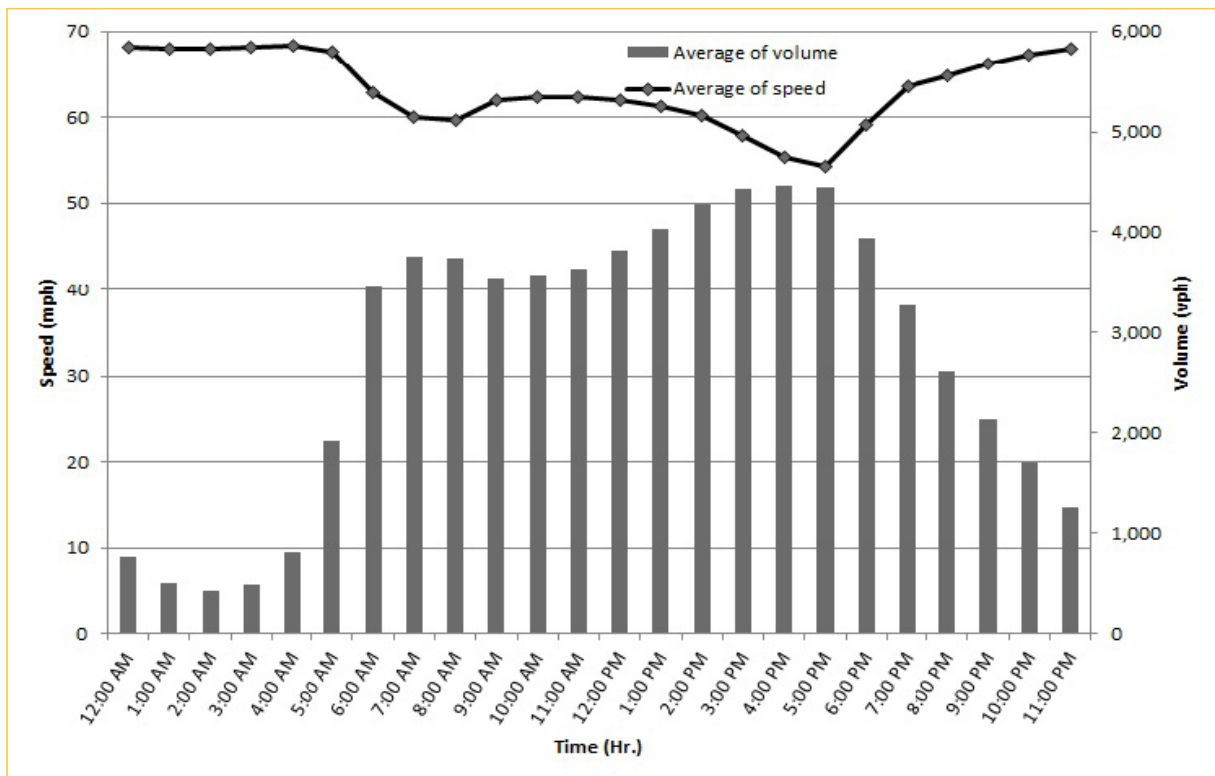
## TRAVEL TIME RELIABILITY REPORT

### Weekdays Speeds and Volumes by Time of Day\*

SR 826 Eastbound: 7.1 Miles\*\*  
From: West of NW 67 Avenue  
To: I-95

SR 826 Westbound: 7.1 Miles \*\*  
From: I-95  
To: West of NW 67 Avenue

\* Twelve-month weekday average from January 1st, 2020 to December 31st, 2020.

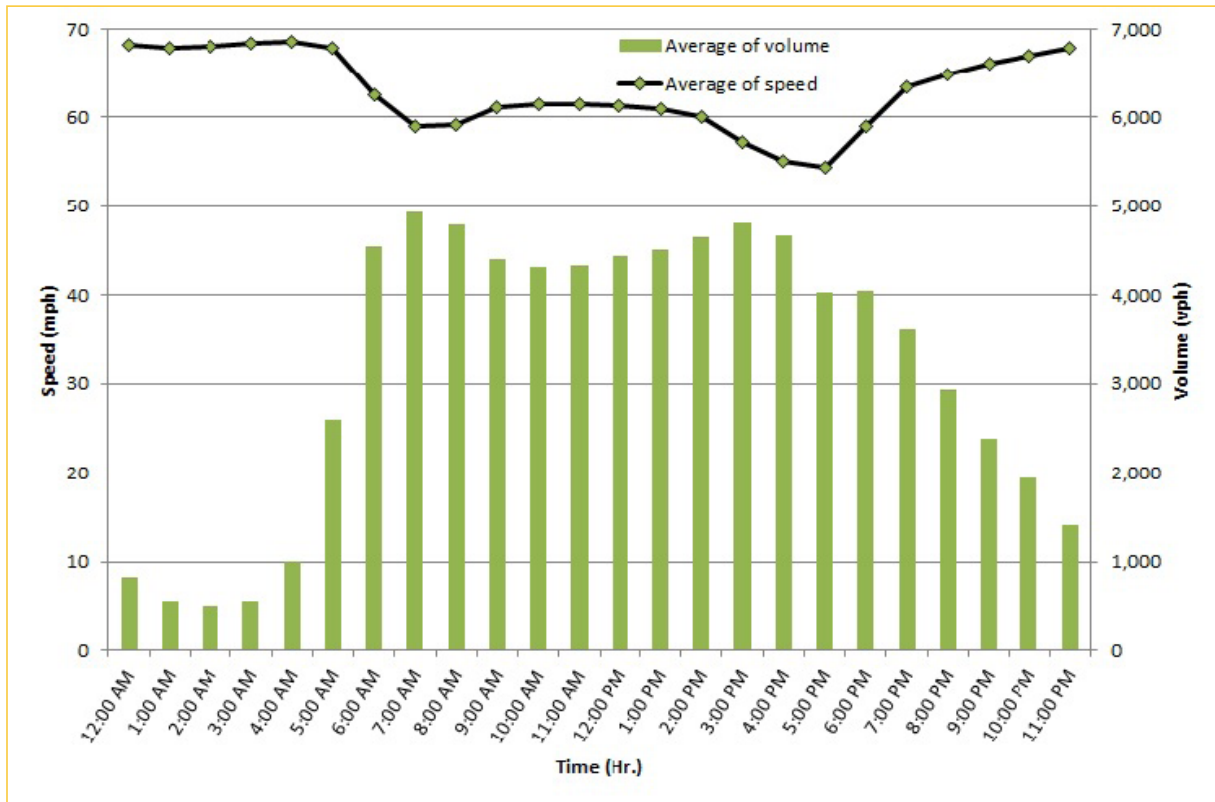
\*\* Data obtained from Regional Integrated Transportation System (RITIS).



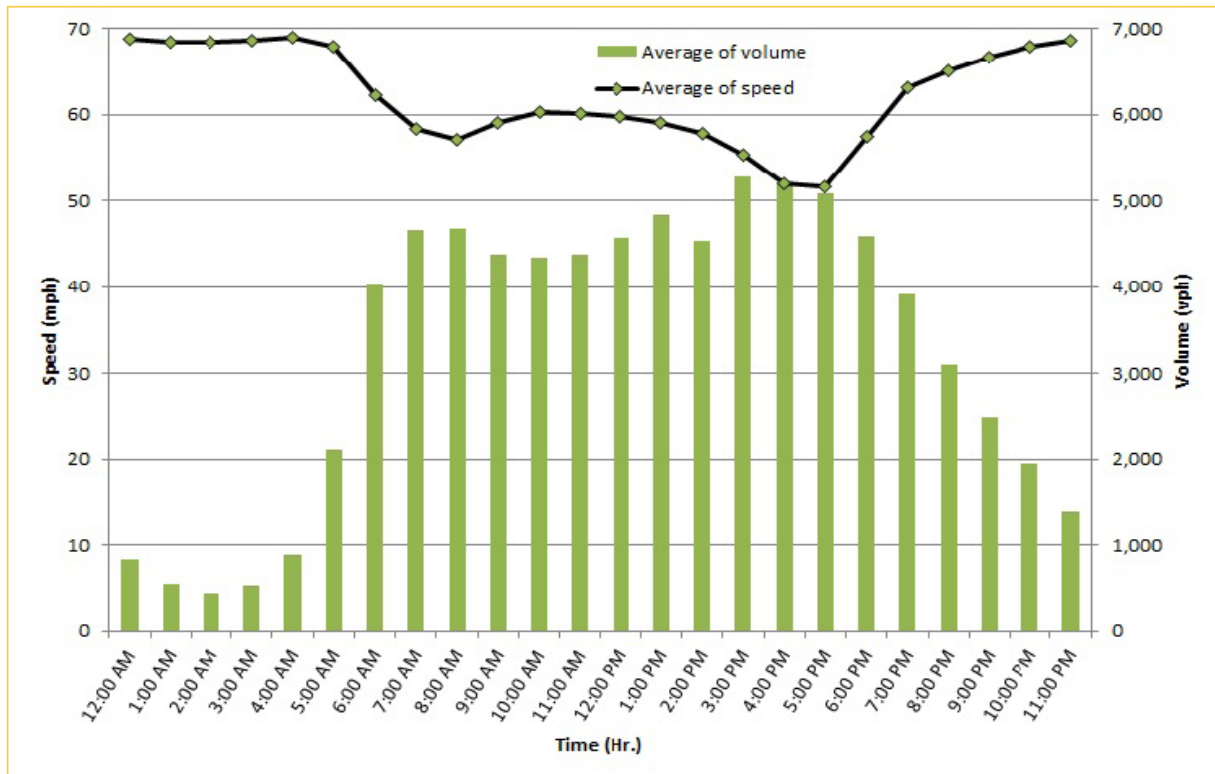
## TRAVEL TIME RELIABILITY REPORT

### Weekdays Speeds and Volumes by Time of Day\*

SR 826 Northbound/Eastbound : 24.2 Miles\*\*  
From: US-1  
To: I-95



SR 826 Southbound/Westbound: 24.2 Miles\*\*  
From: I-95  
To: US-1



\* Twelve-month weekday average from January 1st, 2020 to December 31st, 2020.

\*\* Data obtained from Regional Integrated Transportation System (RITIS). Excludes express lanes.