

## TRAVEL TIME RELIABILITY REPORT

### Travel Time Index by Roadway\*

Time	I-95**		I-195**		I-75**		SR 826**					
	NB	SB	EB	WB	NB	SB	NB	EB	NE	SB	WB	SW
0:00	0.93	0.92	0.85	1.01	1.02	1.13	0.87	0.85	0.87	0.82	0.87	0.84
1:00	0.91	0.90	0.87	1.01	1.03	1.16	0.88	0.87	0.88	0.84	0.89	0.86
2:00	0.90	0.91	0.90	1.03	1.03	1.14	0.89	0.87	0.89	0.86	0.90	0.87
3:00	0.92	0.91	0.92	1.04	1.05	1.16	0.91	0.88	0.90	0.87	0.91	0.88
4:00	0.91	0.91	0.93	1.01	1.06	1.15	0.85	0.86	0.86	0.85	0.88	0.86
5:00	0.88	0.91	0.88	0.97	1.04	1.12	0.84	0.86	0.85	0.85	0.87	0.86
6:00	0.97	1.17	0.90	0.93	1.02	1.11	0.96	1.08	1.00	1.00	1.04	1.01
7:00	1.03	1.69	1.11	0.94	1.04	2.80	1.15	1.43	1.25	1.21	1.42	1.27
8:00	1.06	1.97	1.74	0.98	1.06	3.60	1.17	1.46	1.28	1.36	1.52	1.41
9:00	0.99	1.70	1.60	0.98	1.04	1.90	1.05	1.07	1.07	1.20	1.16	1.19
10:00	0.96	1.36	1.12	1.00	1.03	1.18	0.99	0.95	0.98	1.02	1.02	1.02
11:00	1.00	1.22	0.99	1.02	1.02	1.15	0.97	0.94	0.96	1.00	1.02	1.01
12:00	1.04	1.19	0.95	1.02	1.02	1.16	0.99	0.94	0.98	1.01	0.99	1.01
13:00	1.11	1.18	0.94	1.03	1.02	1.18	1.02	0.94	1.00	1.05	1.00	1.04
14:00	1.25	1.22	1.12	1.05	1.02	1.19	1.07	0.96	1.04	1.07	1.05	1.06
15:00	1.60	1.26	1.20	1.21	1.03	1.22	1.20	0.99	1.14	1.16	1.15	1.16
16:00	1.94	1.35	1.01	1.49	1.06	1.22	1.44	1.09	1.34	1.41	1.26	1.37
17:00	2.09	1.40	1.02	1.44	1.31	1.20	1.62	1.18	1.50	1.69	1.30	1.57
18:00	1.77	1.32	1.10	1.19	1.26	1.19	1.40	1.15	1.33	1.48	1.11	1.37
19:00	1.25	1.09	1.00	1.03	1.02	1.14	1.02	0.97	1.01	1.01	0.94	0.99
20:00	0.99	0.95	0.88	0.99	1.00	1.19	0.89	0.92	0.90	0.85	0.91	0.87
21:00	1.03	1.01	0.86	0.99	1.00	1.14	0.86	0.88	0.87	0.82	0.88	0.84
22:00	1.06	1.05	0.87	1.01	1.00	1.17	0.86	0.86	0.86	0.82	0.87	0.84
23:00	1.05	1.00	0.86	1.01	1.02	1.15	0.87	0.85	0.86	0.82	0.89	0.84
<b>FFS***</b>	<b>61 mph</b>	<b>60 mph</b>	<b>56 mph</b>	<b>53 mph</b>	<b>68 mph</b>	<b>68 mph</b>	<b>59 mph</b>	<b>63 mph</b>	<b>60 mph</b>	<b>60 mph</b>	<b>61 mph</b>	<b>61 mph</b>

*Maximum Travel Time Index.*

**Travel Time Index (TTI)** is a measure of average conditions that indicates how much longer, **on average**, travel times are during congestion compared to during light traffic.

**Real World Example:** A TTI of 1.60 means that for a trip that usually takes 10 minutes in light traffic, a traveler should budget for an additional 6 minutes **on average**.



\* Twelve-month weekday average from June 1<sup>st</sup>, 2019 to May 31<sup>st</sup>, 2020.

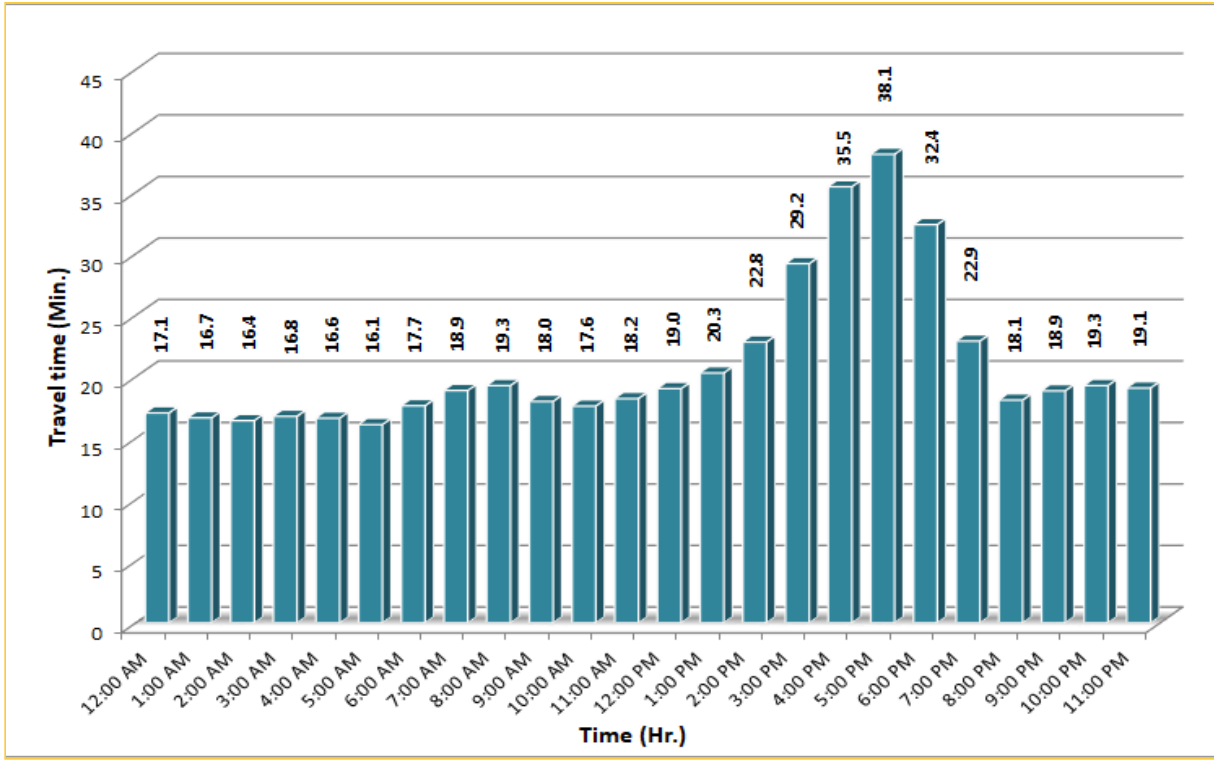
\*\* Data obtained from Regional Integrated Transportation System (RITIS), Probe Data Analytics Suite.

\*\*\* Free Flow Speed.

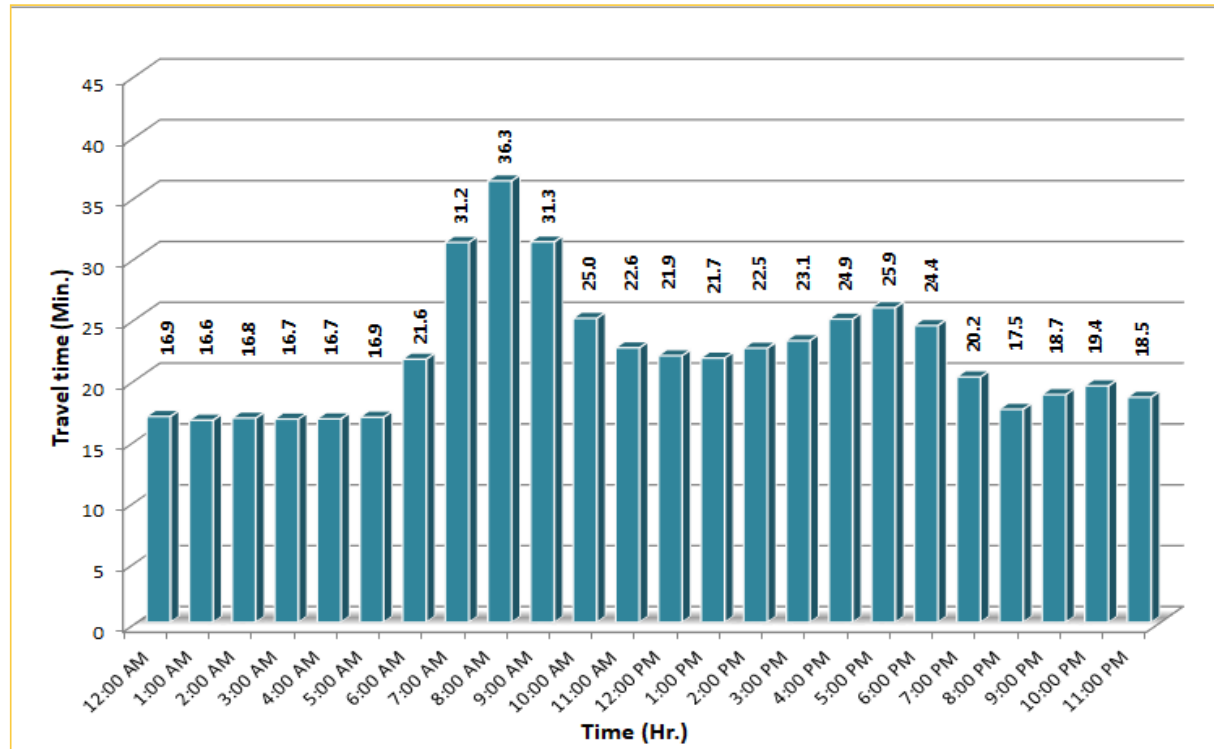
## TRAVEL TIME RELIABILITY REPORT

### Weekdays Travel Times by Time of Day\*

**I-95 Northbound: 17.3 Miles\*\***  
 From: US-1  
 To: Miami-Dade / Broward County Line

**I-95 Southbound: 17.3 Miles\*\***  
 From: Miami-Dade / Broward County Line  
 To: US-1

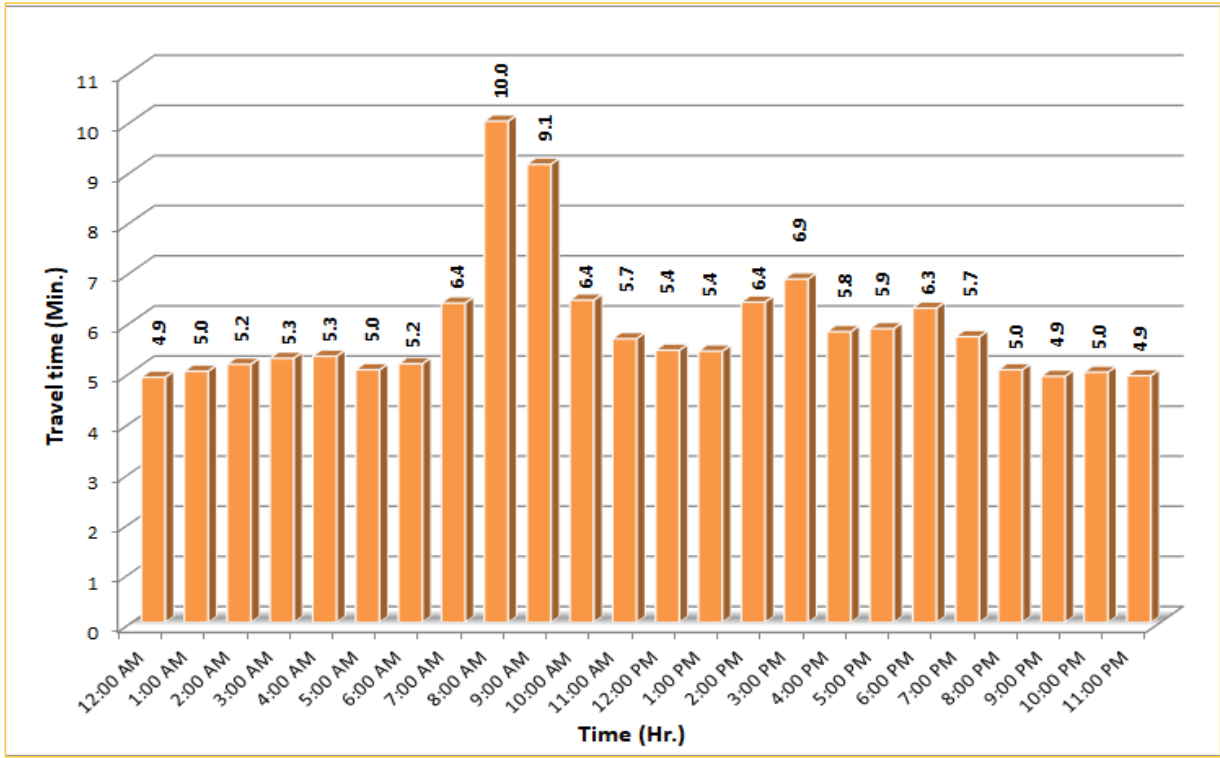
\* Twelve-month weekday average from June 1<sup>st</sup>, 2019 to May 31<sup>st</sup>, 2020.

\*\* Data obtained from Regional Integrated Transportation System (RITIS), Probe Data Analytics Suite. Excludes express lanes.

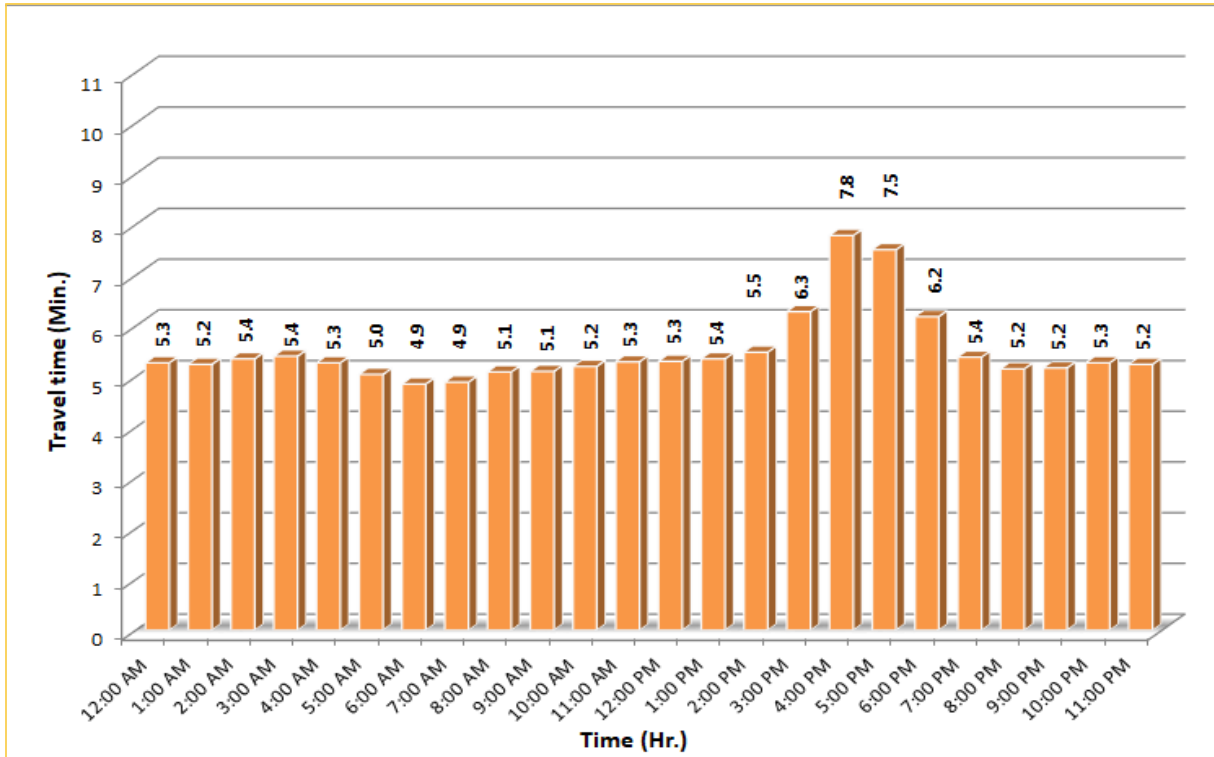
## TRAVEL TIME RELIABILITY REPORT

### Weekdays Travel Times by Time of Day\*

**I-195 Eastbound: 4.9 Miles\*\***  
 From: West of North Miami Avenue  
 To: West of Alton Road

**I-195 Westbound: 4.9 Miles\*\***  
 From: West of Alton Road  
 To: West of North Miami Avenue


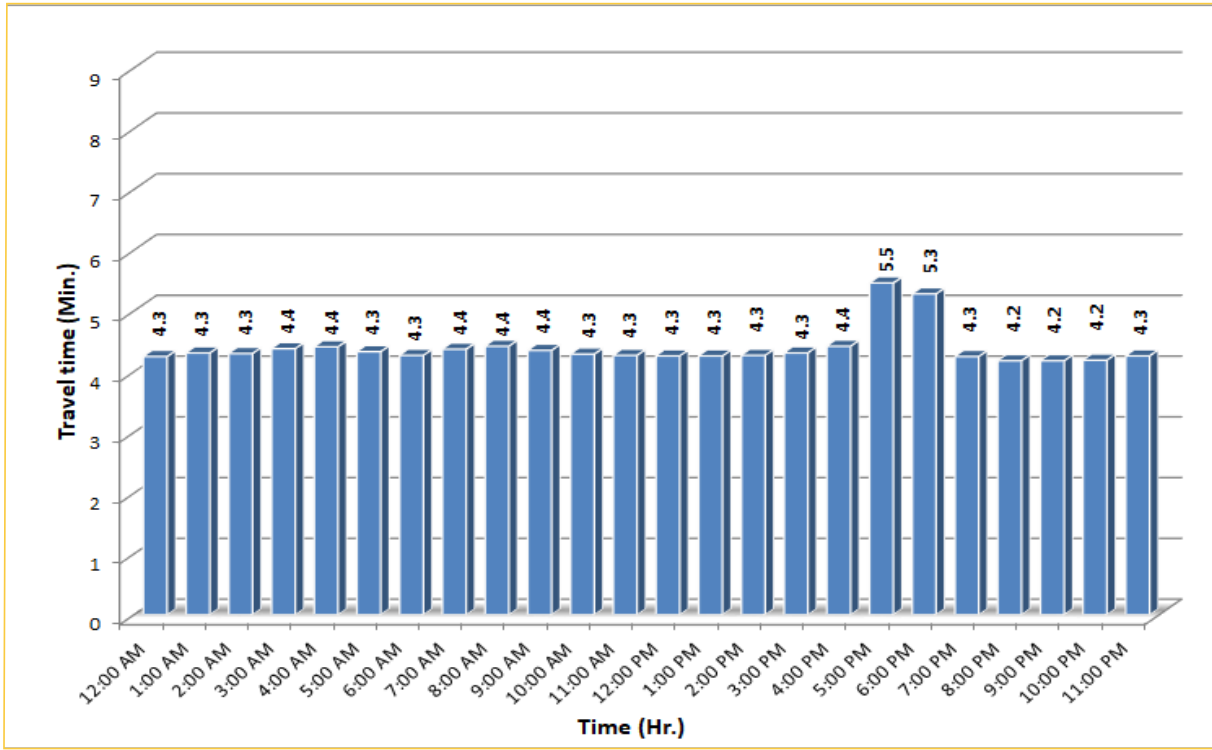
\* Twelve-month weekday average from June 1<sup>st</sup>, 2019 to May 31<sup>st</sup>, 2020.

\*\* Data obtained from Regional Integrated Transportation System (RITIS), Probe Data Analytics Suite.

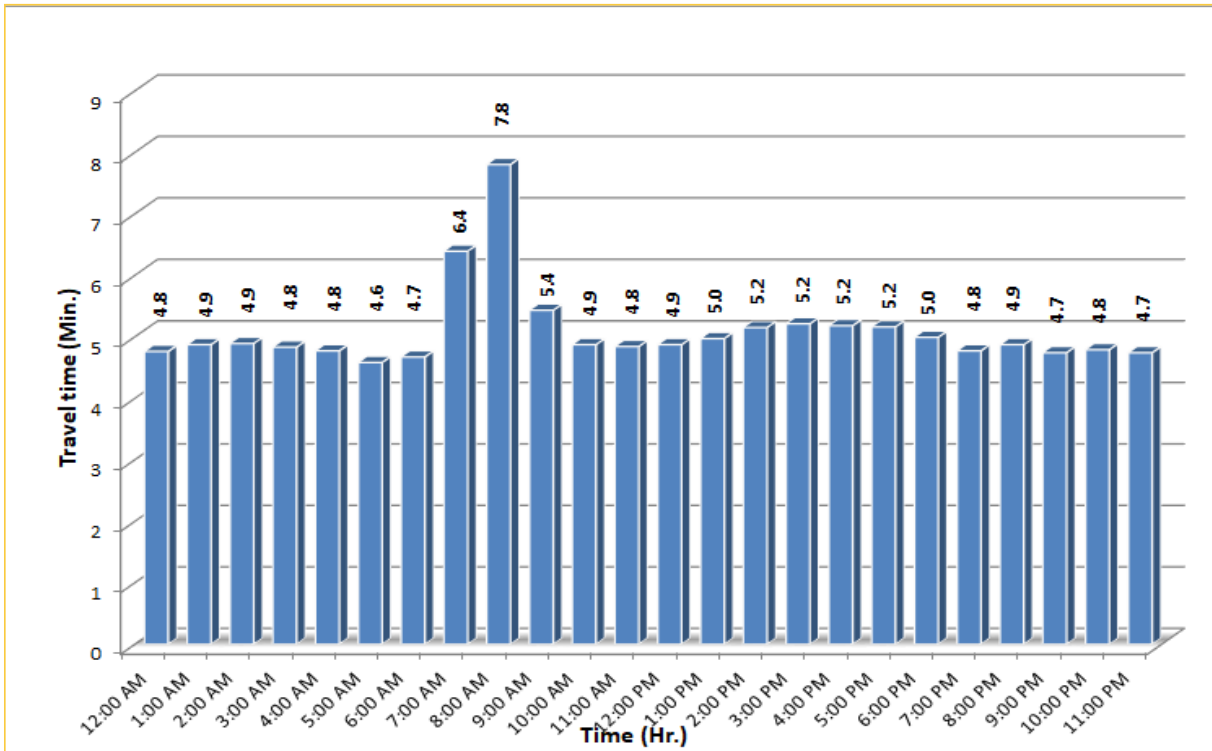
## TRAVEL TIME RELIABILITY REPORT

### Weekdays Travel Times by Time of Day\*

**I-75 Northbound: 5.4 Miles\*\***  
 From: West of SR 826  
 To: North of Florida's Turnpike

**I-75 Southbound: 5.4 Miles\*\***  
 From: North of Florida's Turnpike  
 To: West of SR 826

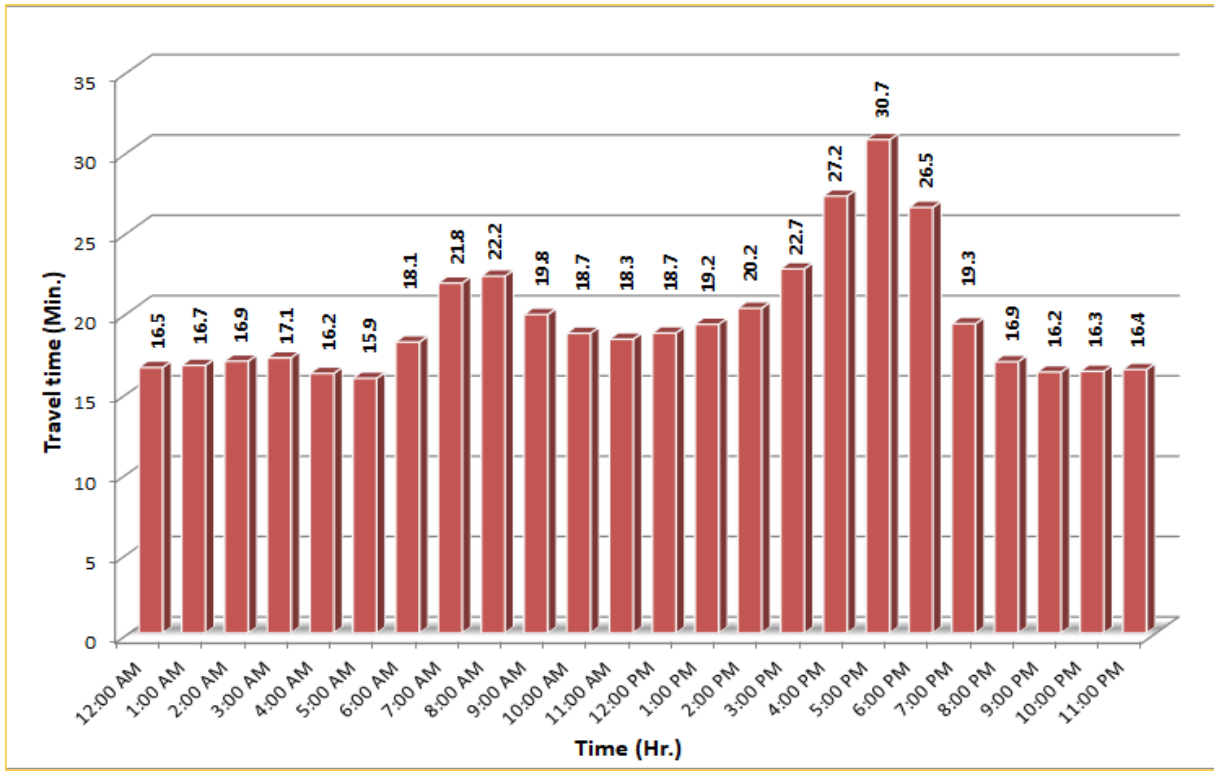
\* Twelve-month weekday average from June 1<sup>st</sup>, 2019 to May 31<sup>st</sup>, 2020.

\*\* Data obtained from Regional Integrated Transportation System (RITIS), Probe Data Analytics Suite. Excludes express lanes.


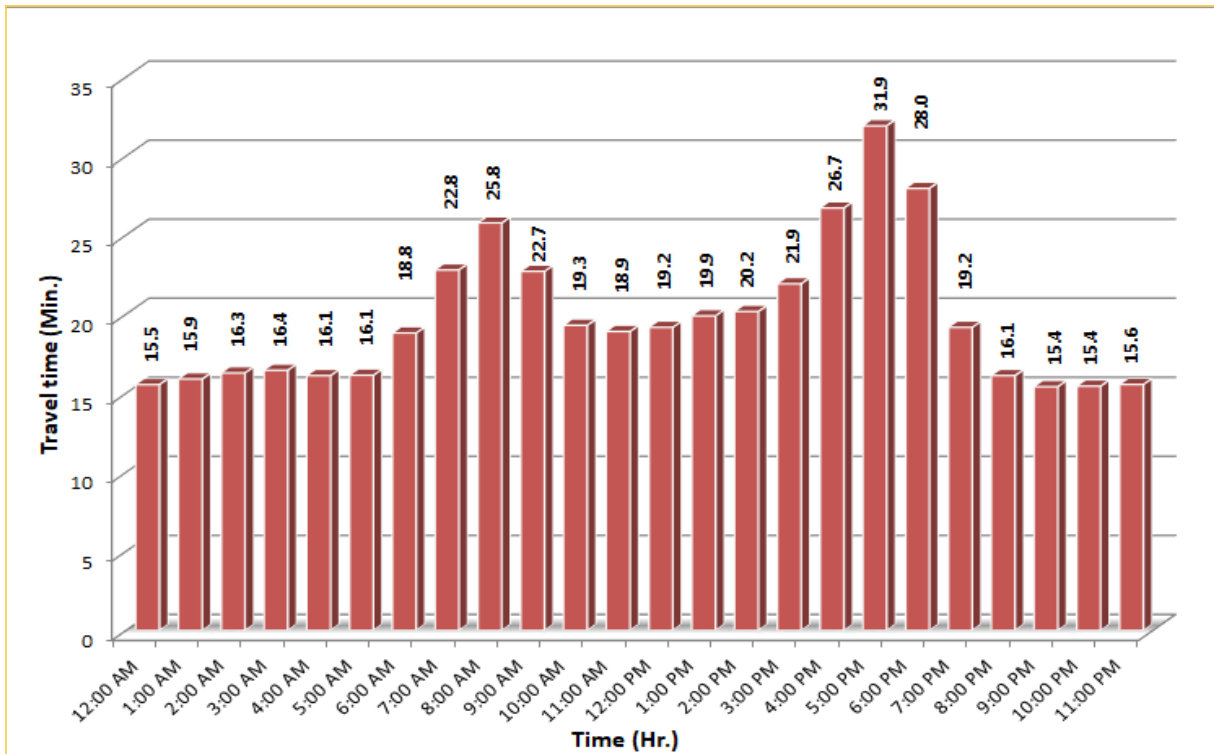
## TRAVEL TIME RELIABILITY REPORT

### Weekdays Travel Times by Time of Day\*

SR 826 Northbound: 16.6 Miles\*\*  
 From: US-1  
 To: North of NW 154 Street

SR 826 Southbound: 16.6 Miles\*\*  
 From: North of NW 154 Street  
 To: US-1

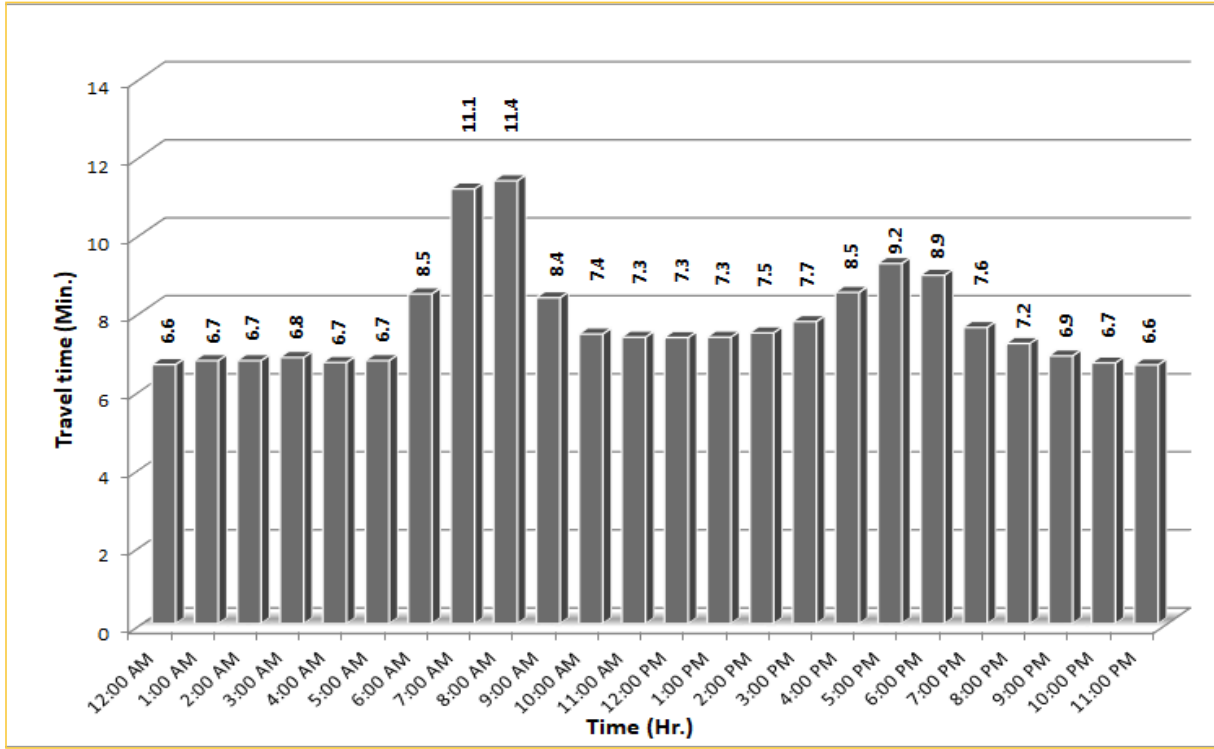
\* Twelve-month weekday average from June 1<sup>st</sup>, 2019 to May 31<sup>st</sup>, 2020.

\*\* Data obtained from Regional Integrated Transportation System (RITIS), Probe Data Analytics Suite. Excludes express lanes.

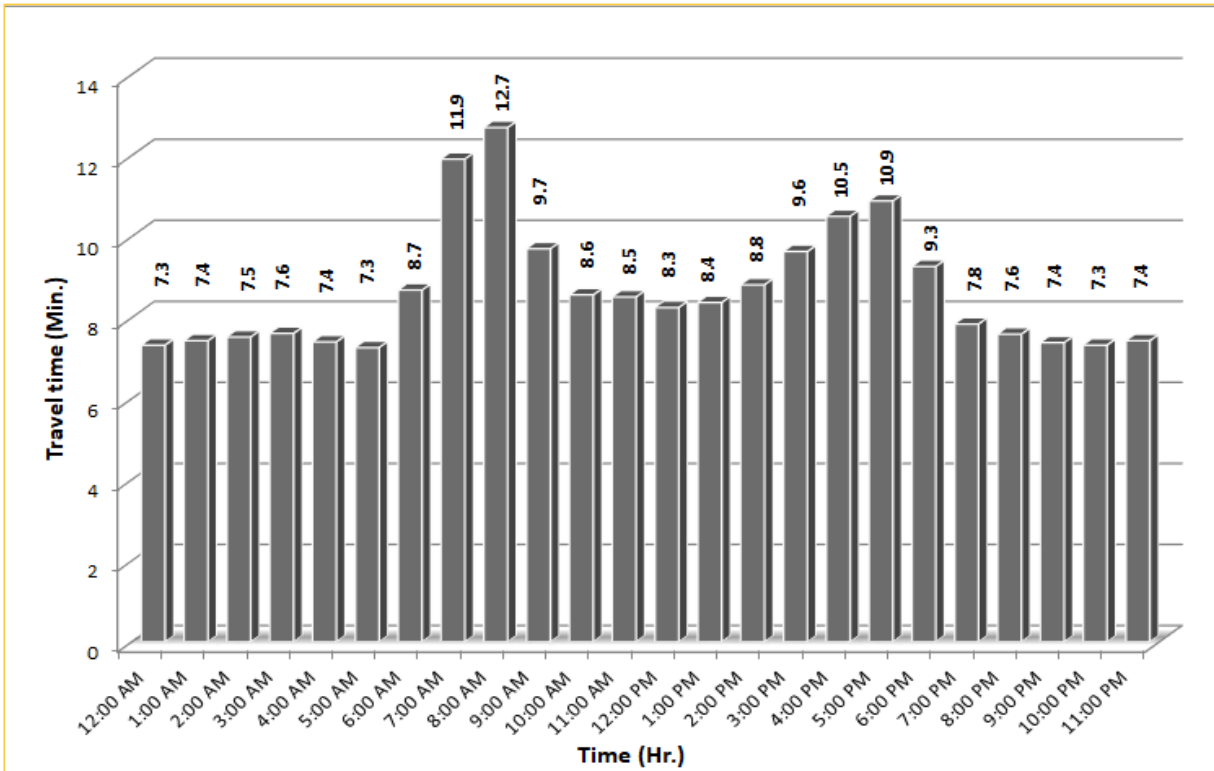
## TRAVEL TIME RELIABILITY REPORT

### Weekdays Travel Times by Time of Day\*

SR 826 Eastbound: 7.1 Miles\*\*  
 From: West of NW 67 Avenue  
 To: I-95

SR 826 Westbound: 7.1 Miles\*\*  
 From: I-95  
 To: West of NW 67 Avenue

\* Twelve-month weekday average from June 1<sup>st</sup>, 2019 to May 31<sup>st</sup>, 2020.

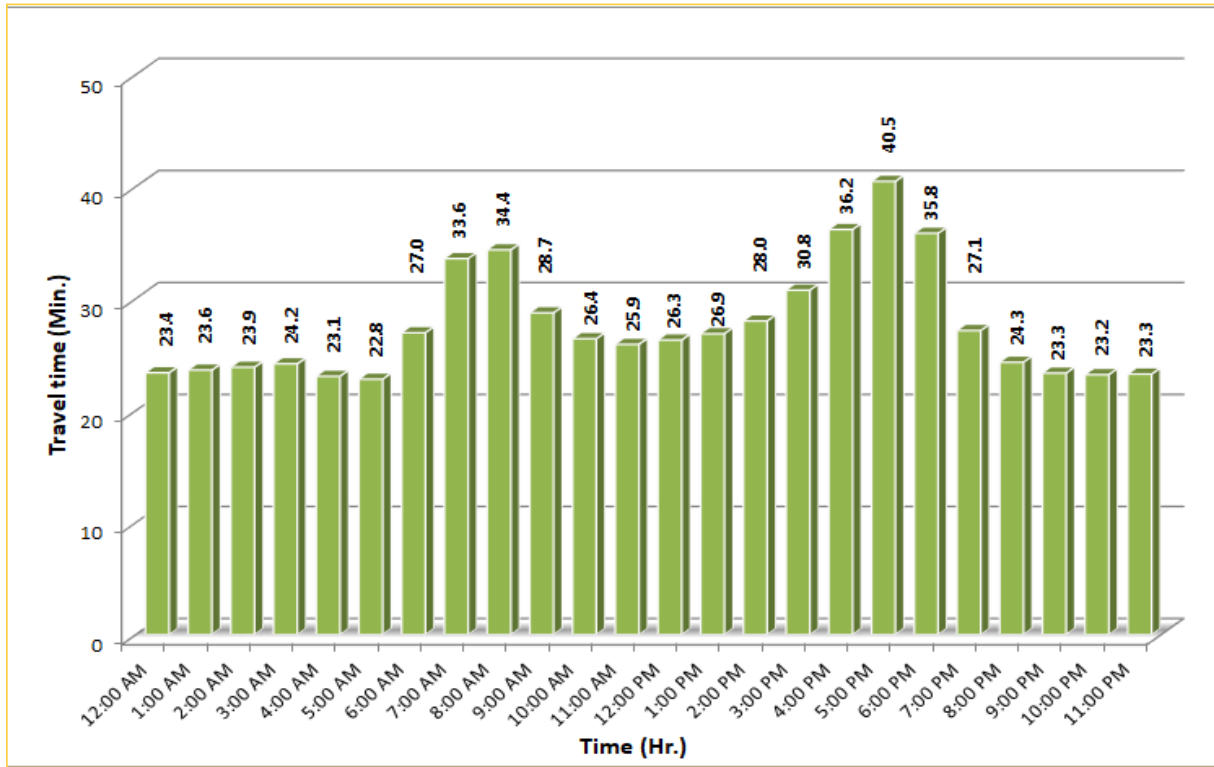
\*\* Data obtained from Regional Integrated Transportation System (RITIS), Probe Data Analytics Suite.



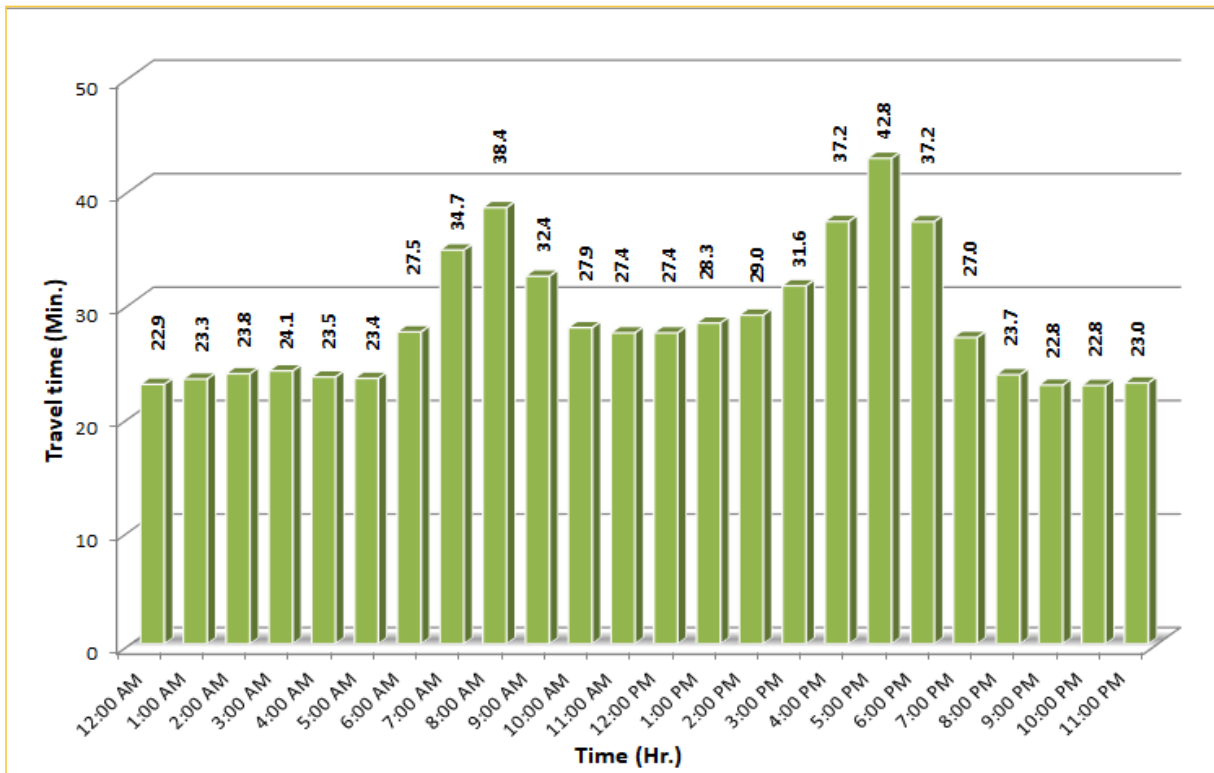
## TRAVEL TIME RELIABILITY REPORT

### Weekdays Travel Times by Time of Day\*

SR 826 Northbound/Eastbound : 24.2 Miles\*\*  
 From: US-1  
 To: I-95



SR 826 Southbound/Westbound: 24.2 Miles\*\*  
 From: I-95  
 To: US-1



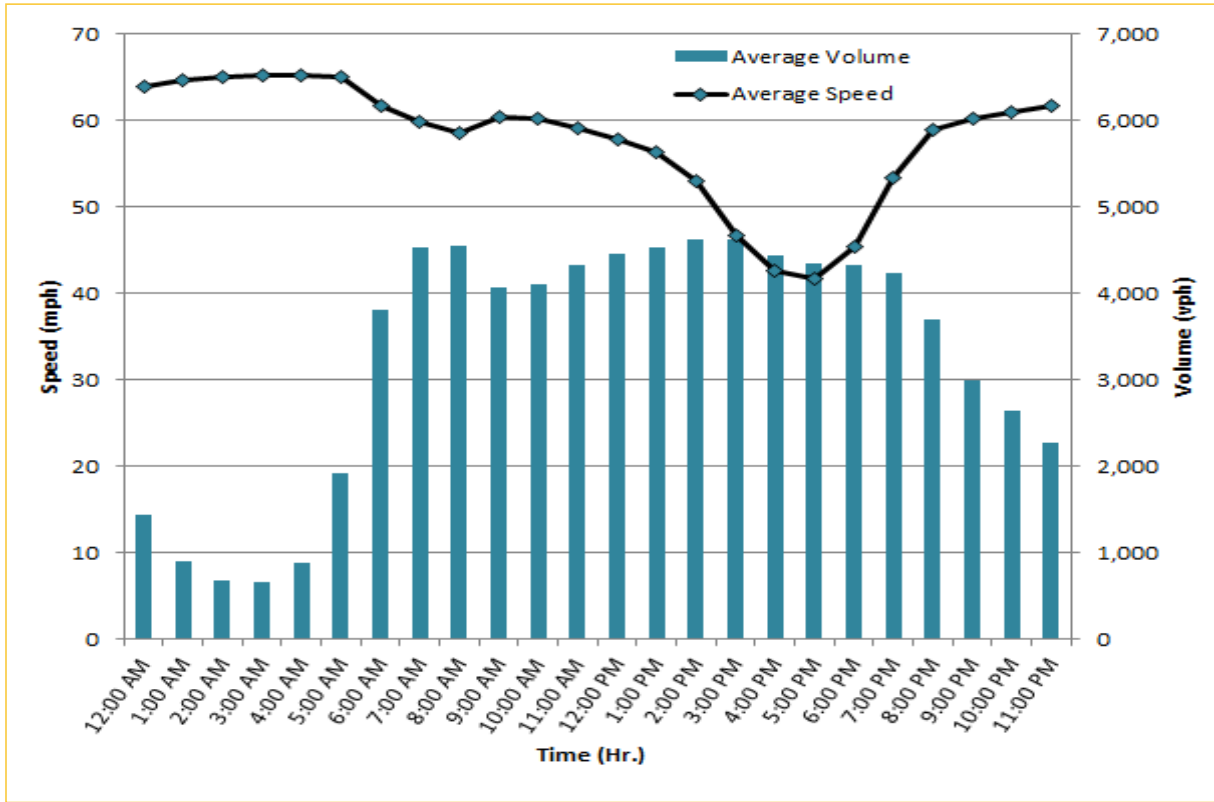
\* Twelve-month weekday average from June 1<sup>st</sup>, 2019 to May 31<sup>st</sup>, 2020.

\*\* Data obtained from Regional Integrated Transportation System (RITIS), Probe Data Analytics Suite. Excludes express lanes.

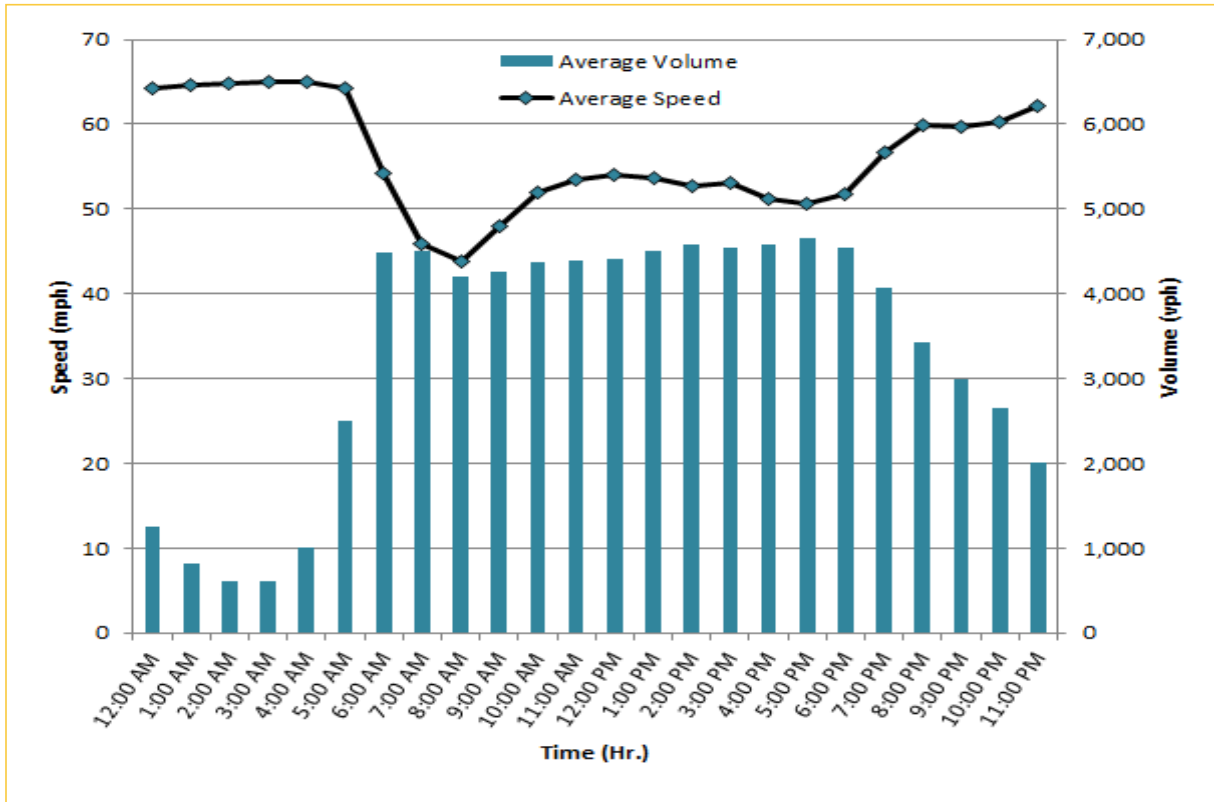
## TRAVEL TIME RELIABILITY REPORT

### Weekdays Speeds and Volumes by Time of Day\*

**I-95 Northbound: 17.3 Miles\*\***  
 From: US-1  
 To: Miami-Dade / Broward County Line

**I-95 Southbound: 17.3 Miles\*\***  
 From: Miami-Dade / Broward County Line  
 To: US-1

\* Twelve-month weekday average from June 1<sup>st</sup>, 2019 to May 31<sup>st</sup>, 2020.

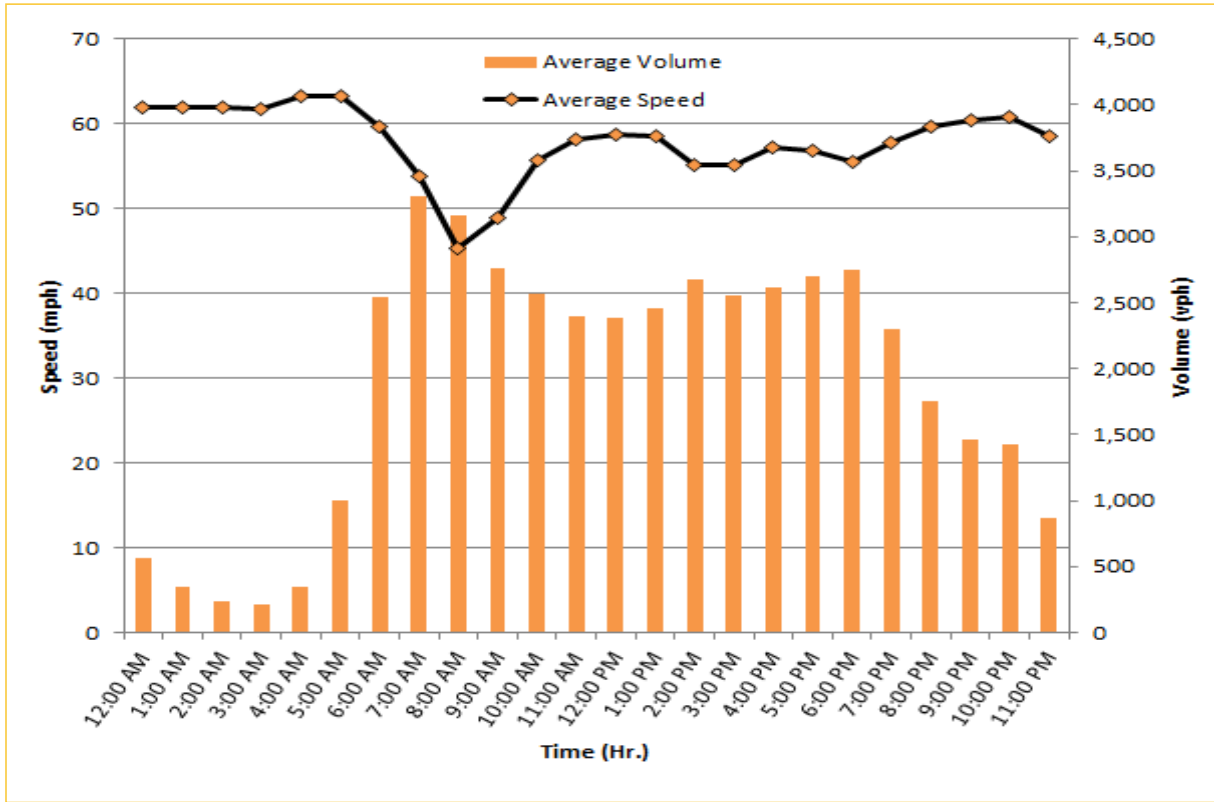
\*\* Data obtained from Regional Integrated Transportation System (RITIS). Excludes express lanes.



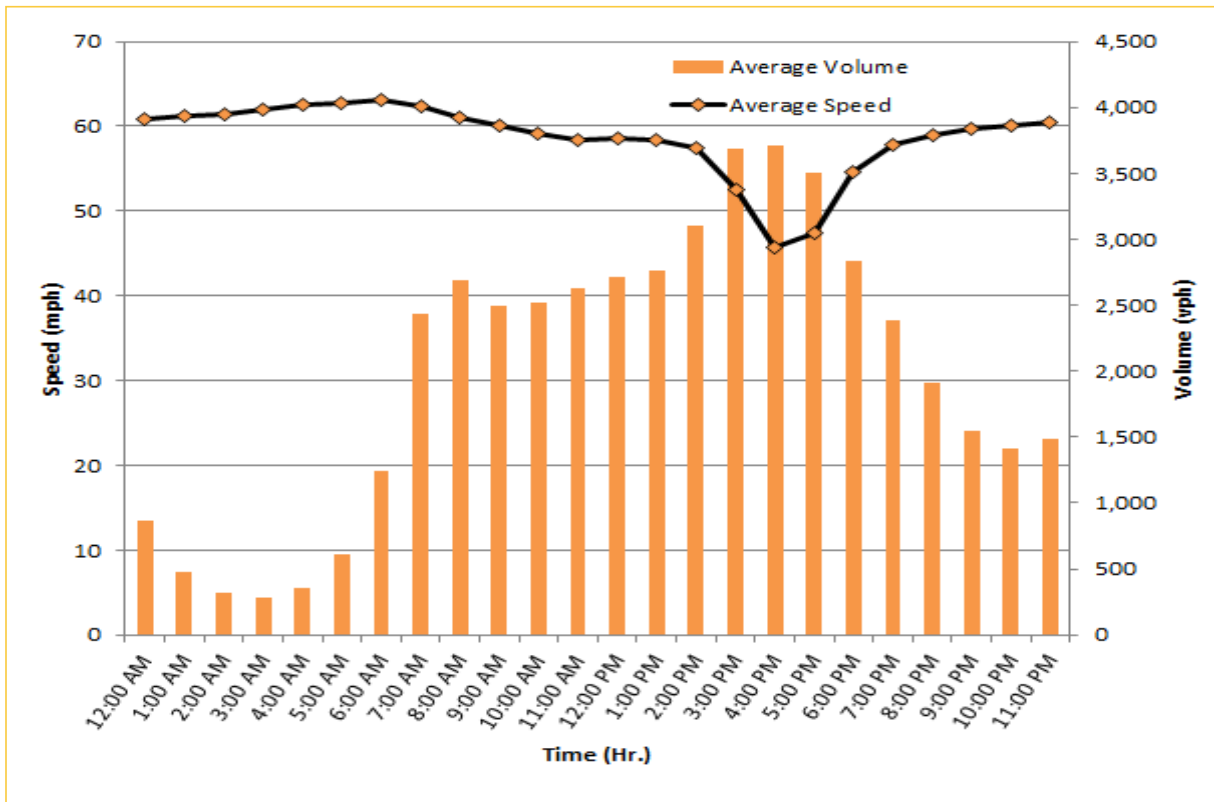
## TRAVEL TIME RELIABILITY REPORT

### Weekdays Speeds and Volumes by Time of Day\*

**I-195 Eastbound: 4.9 Miles\*\***  
 From: West of North Miami Avenue  
 To: West of Alton Road

**I-195 Westbound: 4.9 Miles\*\***  
 From: West of Alton Road  
 To: West of North Miami Avenue


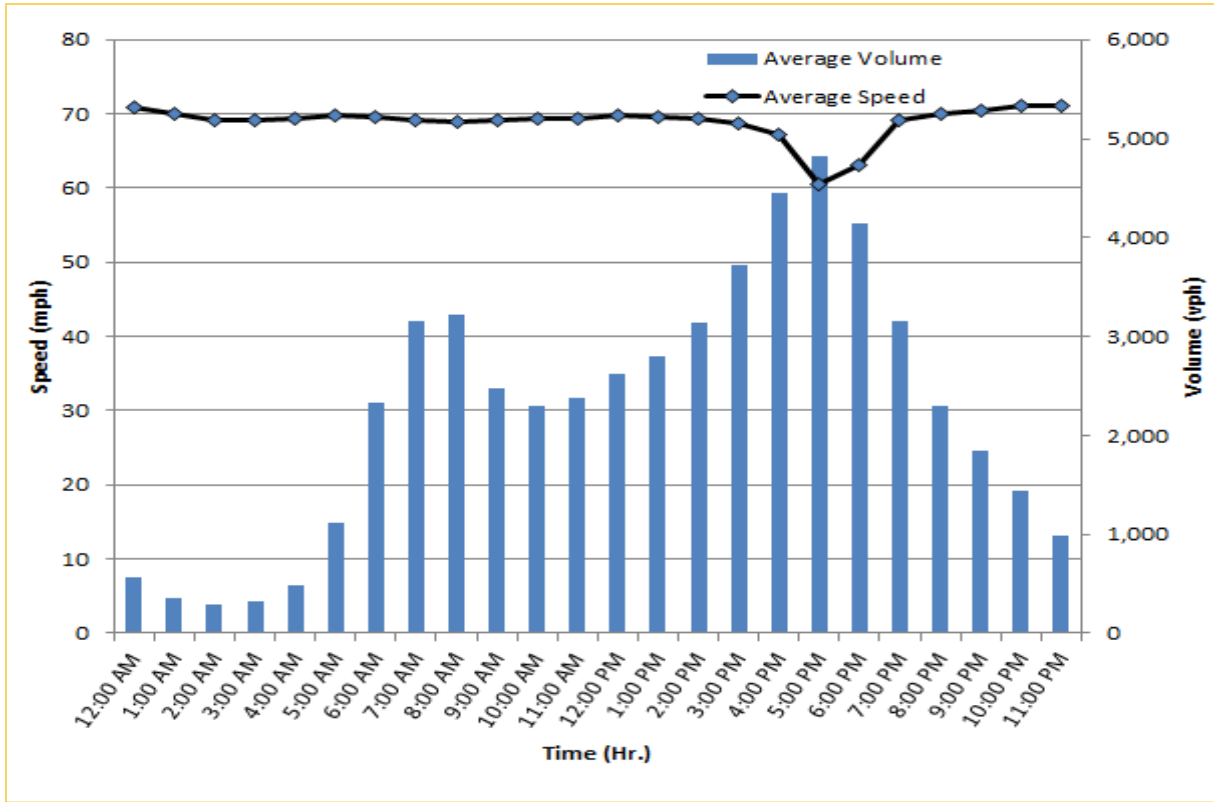
\* Twelve-month weekday average from June 1<sup>st</sup>, 2019 to May 31<sup>st</sup>, 2020.

\*\* Data obtained from Regional Integrated Transportation System (RITIS).

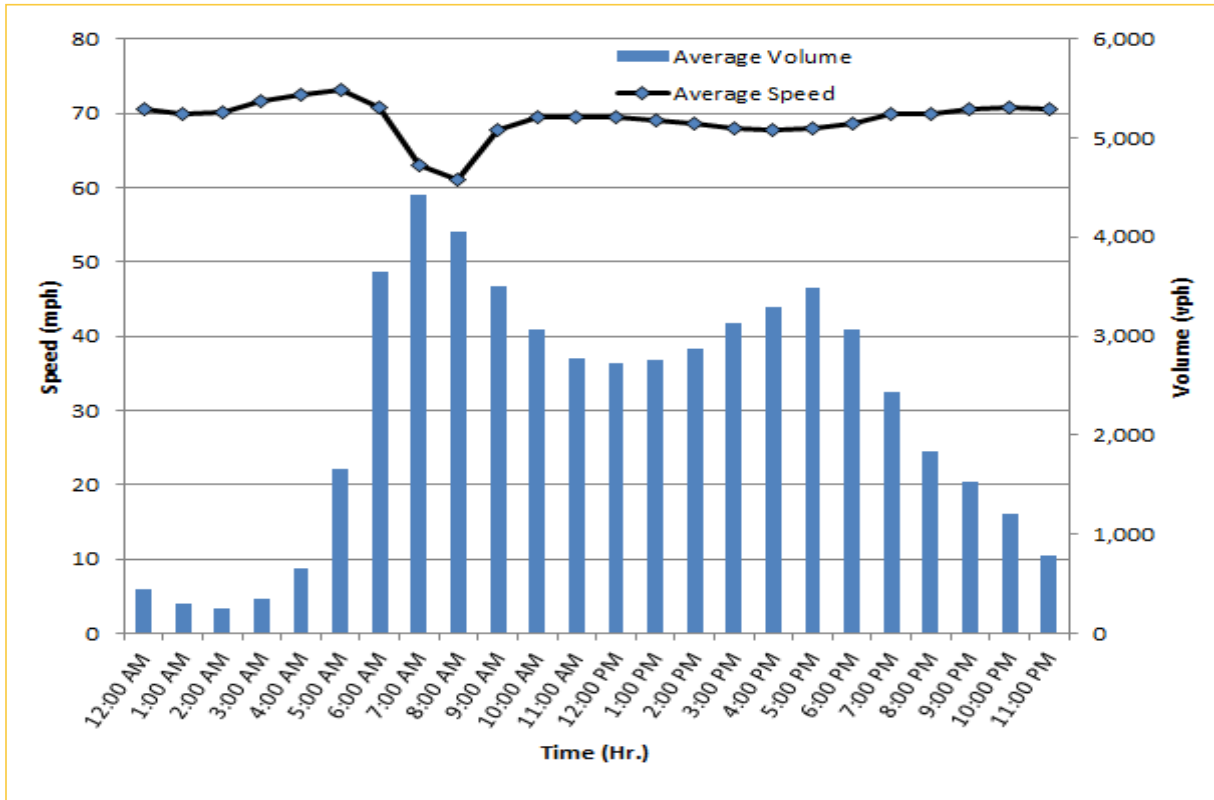
## TRAVEL TIME RELIABILITY REPORT

### Weekdays Speeds and Volumes by Time of Day\*

**I-75 Northbound: 5.4 Miles \*\***  
 From: West of SR 826  
 To: North of Florida's Turnpike

**I-75 Southbound: 5.4 Miles \*\***  
 From: North of Florida's Turnpike  
 To: West of SR 826

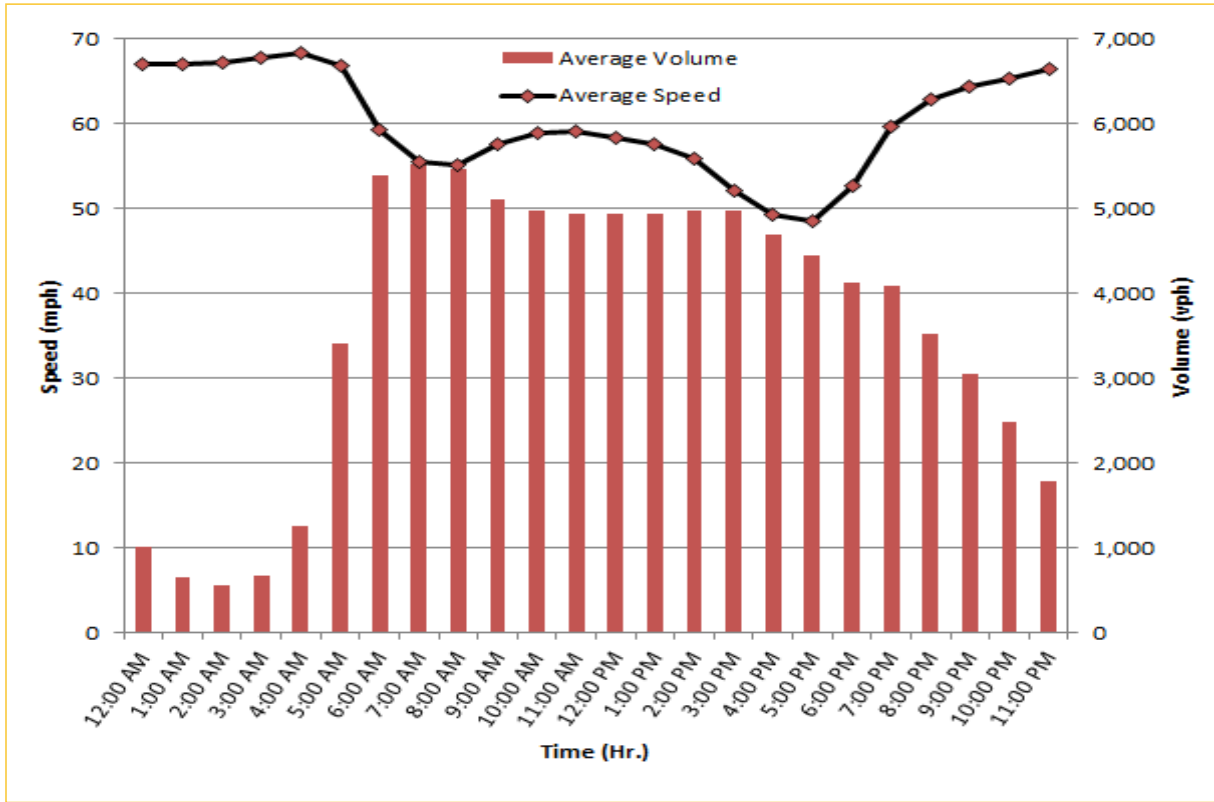
\* Twelve-month weekday average from June 1<sup>st</sup>, 2019 to May 31<sup>st</sup>, 2020.

\*\* Data obtained from Regional Integrated Transportation System (RITIS). Excludes express lanes.

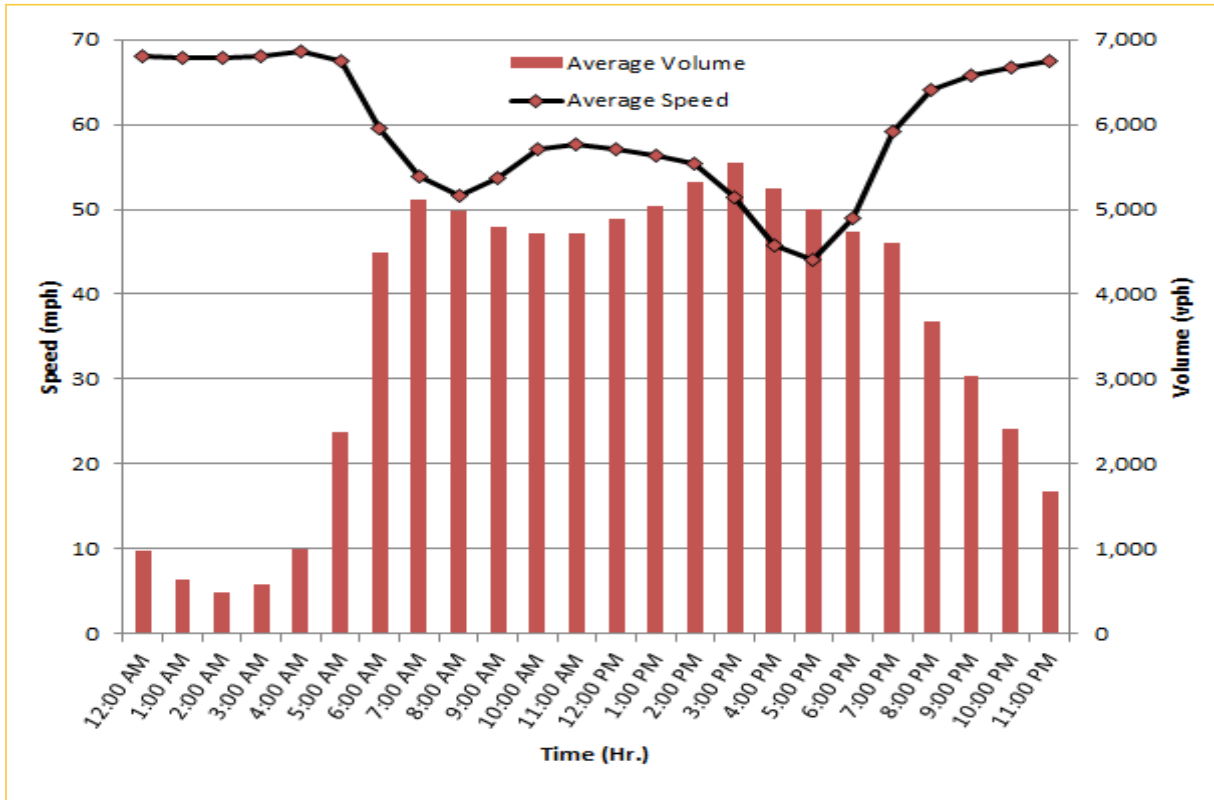
## TRAVEL TIME RELIABILITY REPORT

### Weekdays Speeds and Volumes by Time of Day\*

**SR 826 Northbound: 16.6 Miles\*\***  
 From: US-1  
 To: North of NW 154 Street



**SR 826 Southbound: 16.6 Miles\*\***  
 From: North of NW 154 Street  
 To: US-1



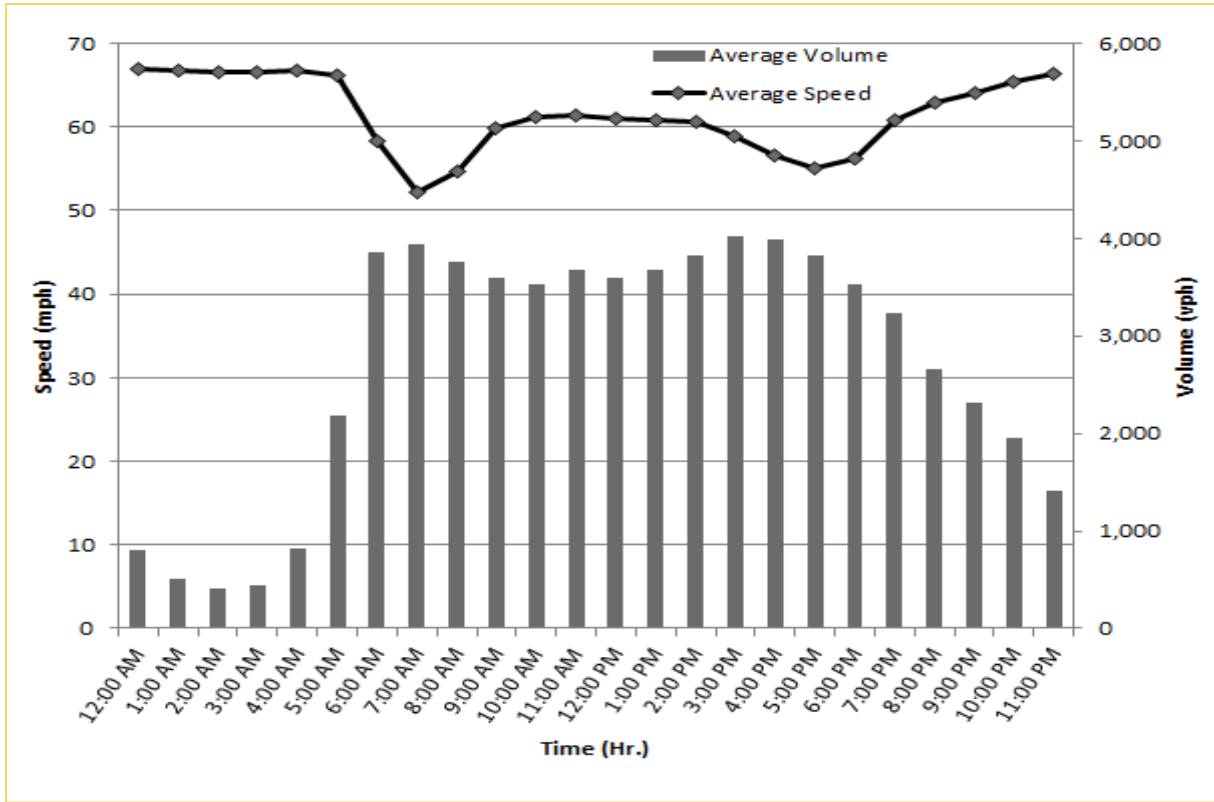
\* Twelve-month weekday average from June 1<sup>st</sup>, 2019 to May 31<sup>st</sup>, 2020.

\*\* Data obtained from Regional Integrated Transportation System (RITIS). Excludes express lanes.

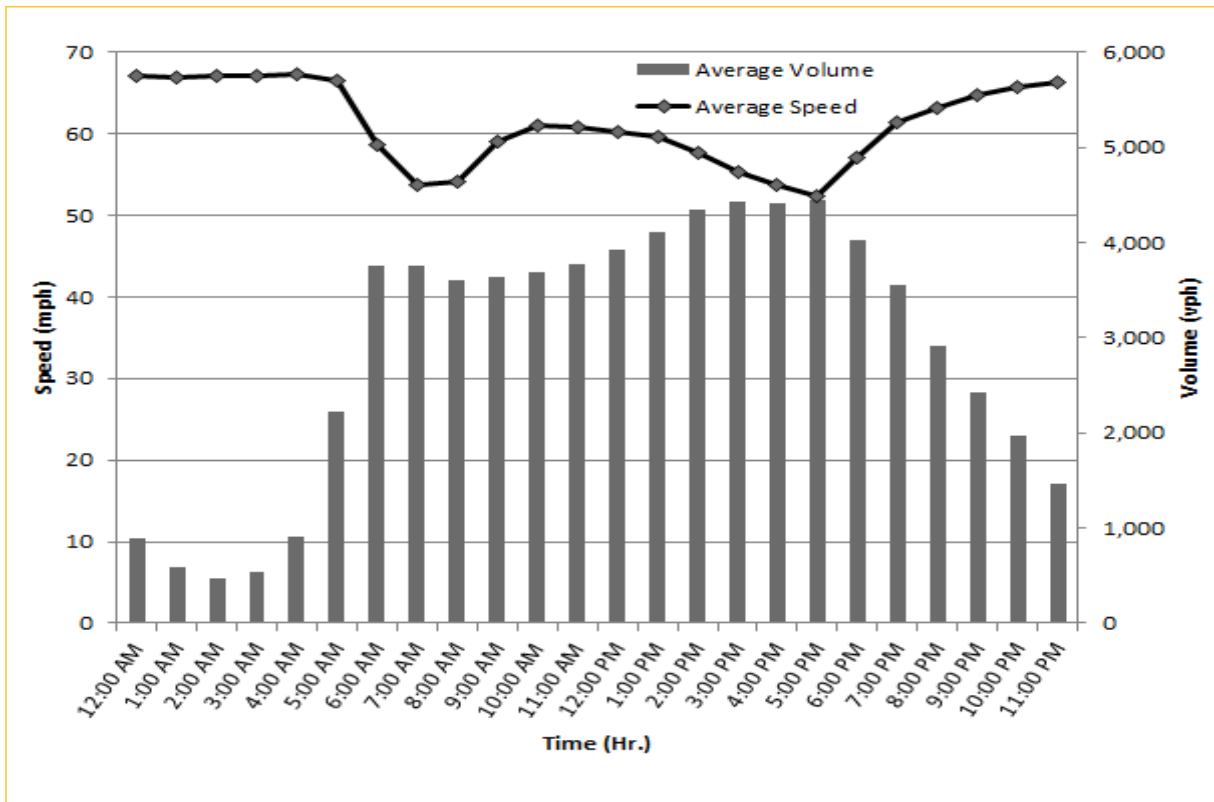
## TRAVEL TIME RELIABILITY REPORT

### Weekdays Speeds and Volumes by Time of Day\*

**SR 826 Eastbound: 7.1 Miles\*\***  
 From: West of NW 67 Avenue  
 To: I-95



**SR 826 Westbound: 7.1 Miles \*\***  
 From: I-95  
 To: West of NW 67 Avenue



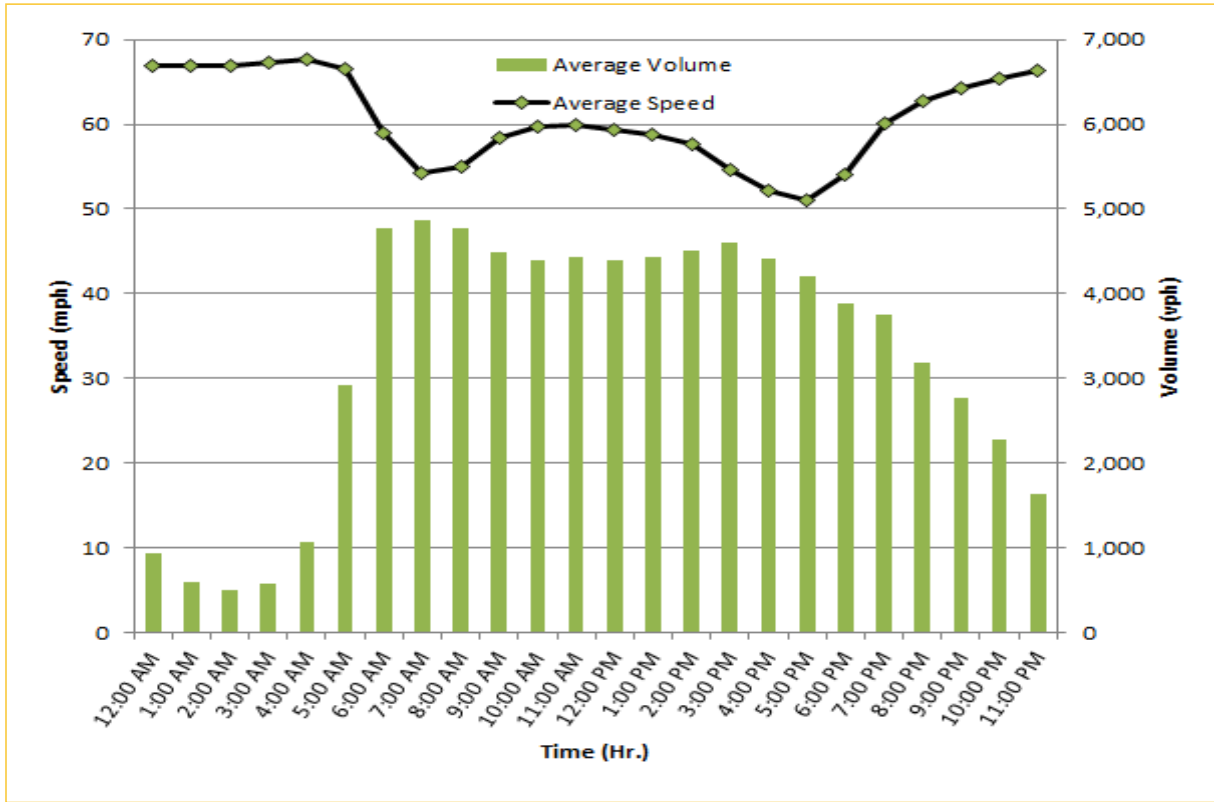
\* Twelve-month weekday average from June 1<sup>st</sup>, 2019 to May 31<sup>st</sup>, 2020.

\*\* Data obtained from Regional Integrated Transportation System (RITIS).

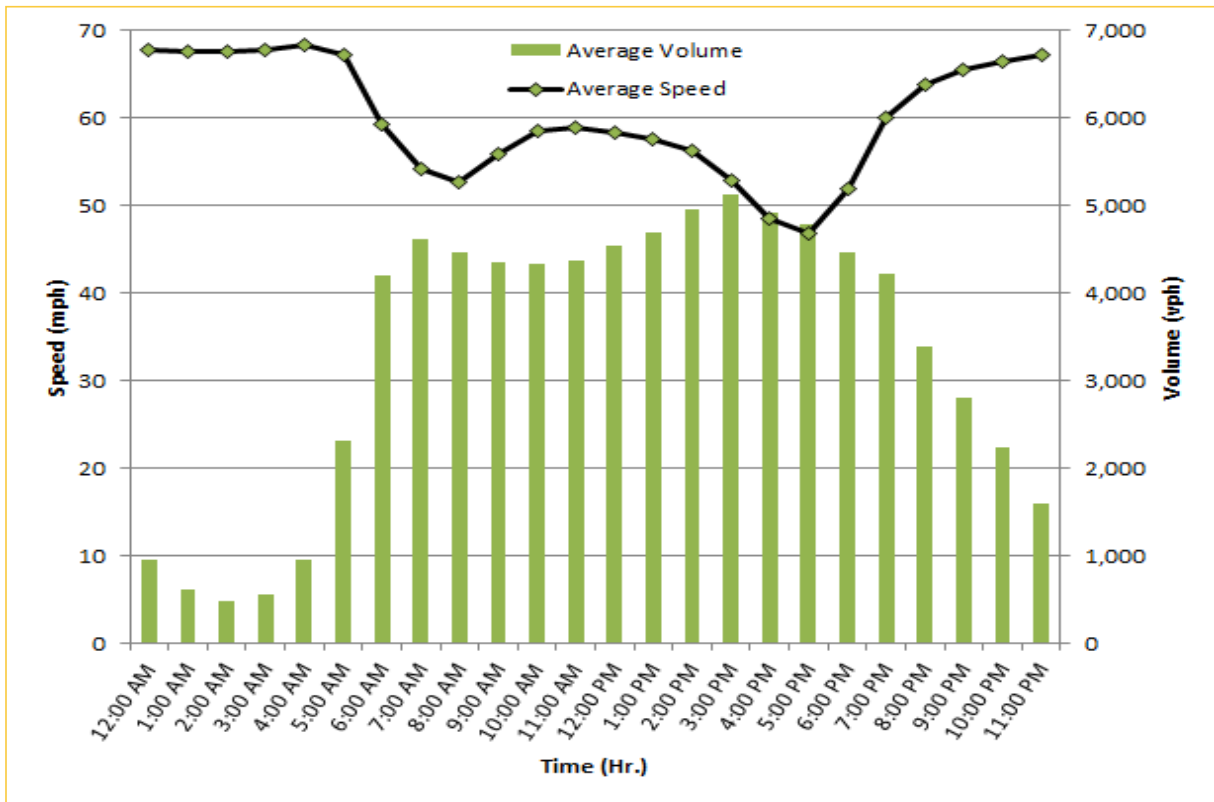
## TRAVEL TIME RELIABILITY REPORT

### Weekdays Speeds and Volumes by Time of Day\*

**SR 826 Northbound/Eastbound : 24.2 Miles\*\***  
 From: US-1  
 To: I-95



**SR 826 Southbound/Westbound: 24.2 Miles\*\***  
 From: I-95  
 To: US-1



\* Twelve-month weekday average from June 1<sup>st</sup>, 2019 to May 31<sup>st</sup>, 2020.

\*\* Data obtained from Regional Integrated Transportation System (RITIS). Excludes express lanes.