

## TRAVEL TIME RELIABILITY REPORT

### Travel Time Index by Roadway\*

Time	I-95		I-195		I-75		SR 826					
	NB	SB	EB	WB	NB	SB	NB	EB	NE	SB	WB	SW
0:00	0.93	0.91	0.84	0.98	1.00	1.01	0.89	0.85	0.88	0.83	0.88	0.85
1:00	0.90	0.89	0.86	0.98	1.01	1.01	0.88	0.87	0.88	0.84	0.89	0.86
2:00	0.88	0.89	0.89	0.99	1.02	1.02	0.90	0.86	0.89	0.87	0.90	0.88
3:00	0.89	0.89	0.91	1.00	1.02	1.02	0.91	0.88	0.90	0.88	0.92	0.89
4:00	0.88	0.90	0.91	0.97	1.04	0.99	0.86	0.87	0.86	0.87	0.90	0.88
5:00	0.87	0.91	0.88	0.93	1.04	0.96	0.84	0.88	0.85	0.86	0.88	0.87
6:00	0.96	1.22	0.91	0.91	1.03	1.02	0.98	1.17	1.03	1.06	1.08	1.06
7:00	1.05	1.85	1.13	0.95	1.06	1.53	1.25	1.65	1.37	1.35	1.46	1.38
8:00	1.07	2.24	1.86	1.09	1.06	1.78	1.29	1.72	1.41	1.58	1.48	1.55
9:00	1.00	1.85	1.81	1.04	1.05	1.24	1.10	1.18	1.12	1.32	1.13	1.27
10:00	0.99	1.42	1.26	1.02	1.04	1.08	1.00	0.99	1.00	1.07	1.00	1.05
11:00	1.01	1.25	1.05	1.04	1.03	1.03	0.98	0.97	0.98	1.00	1.00	1.00
12:00	1.06	1.19	0.99	1.05	1.04	1.04	1.00	0.98	0.99	1.00	1.01	1.00
13:00	1.16	1.21	1.01	1.05	1.04	1.08	1.06	0.98	1.04	1.04	1.03	1.04
14:00	1.33	1.28	1.19	1.08	1.03	1.12	1.15	0.99	1.10	1.06	1.11	1.07
15:00	1.76	1.31	1.35	1.36	1.05	1.12	1.38	1.03	1.27	1.17	1.22	1.18
16:00	2.18	1.40	1.15	1.83	1.08	1.11	1.78	1.10	1.58	1.54	1.33	1.47
17:00	2.34	1.49	1.12	1.68	1.34	1.10	2.11	1.19	1.84	1.90	1.38	1.74
18:00	2.00	1.41	1.17	1.22	1.29	1.07	1.76	1.17	1.58	1.59	1.16	1.46
19:00	1.31	1.12	1.05	1.02	1.05	1.01	1.13	1.00	1.09	1.01	0.97	1.00
20:00	1.02	0.97	0.90	0.98	1.02	1.00	0.91	0.94	0.92	0.85	0.92	0.87
21:00	1.08	1.02	0.89	0.98	0.99	0.99	0.87	0.90	0.88	0.83	0.90	0.85
22:00	1.09	1.05	0.92	0.98	1.05	1.02	0.90	0.89	0.90	0.85	0.92	0.87
23:00	1.08	1.03	0.92	0.98	1.07	1.00	0.93	0.87	0.91	0.87	0.93	0.89
<b>FFS**</b>	<b>55 mph</b>	<b>55 mph</b>	<b>53 mph</b>	<b>55 mph</b>	<b>68 mph</b>	<b>67 mph</b>	<b>53 mph</b>	<b>55 mph</b>	<b>53 mph</b>	<b>52 mph</b>	<b>55 mph</b>	<b>53 mph</b>

*Maximum Travel Time Index.*

**Travel Time Index (TTI)** is a measure of average conditions that indicates how much longer, **on average**, travel times are during congestion compared to during light traffic.

**Real World Example:** A TTI of 1.60 means that for a trip that usually takes 10 minutes in light traffic, a traveler should budget for an additional 6 minutes **on average**.



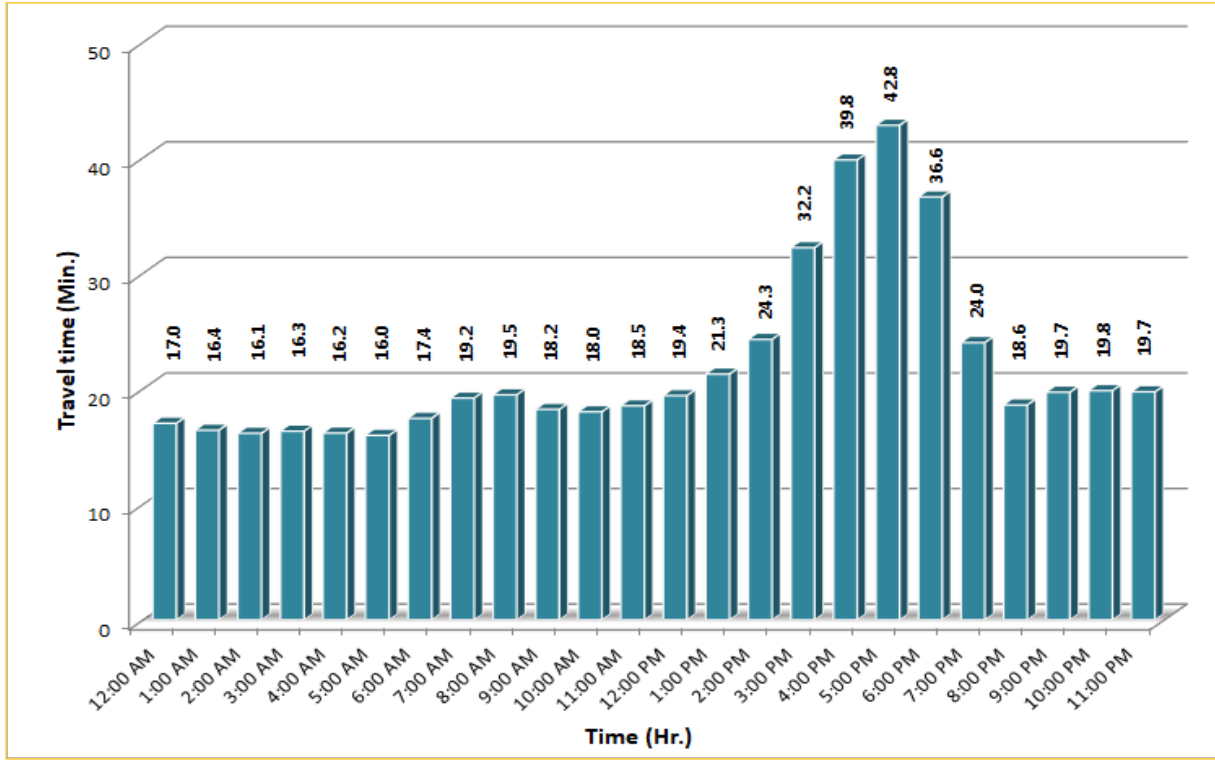
\* Twelve-month weekday average from December 1<sup>st</sup>, 2018 to November 30<sup>th</sup>, 2019. Data obtained from Regional Integrated Transportation System (RITIS), Probe Data Analytics Suite.

\*\* Free Flow Speed.

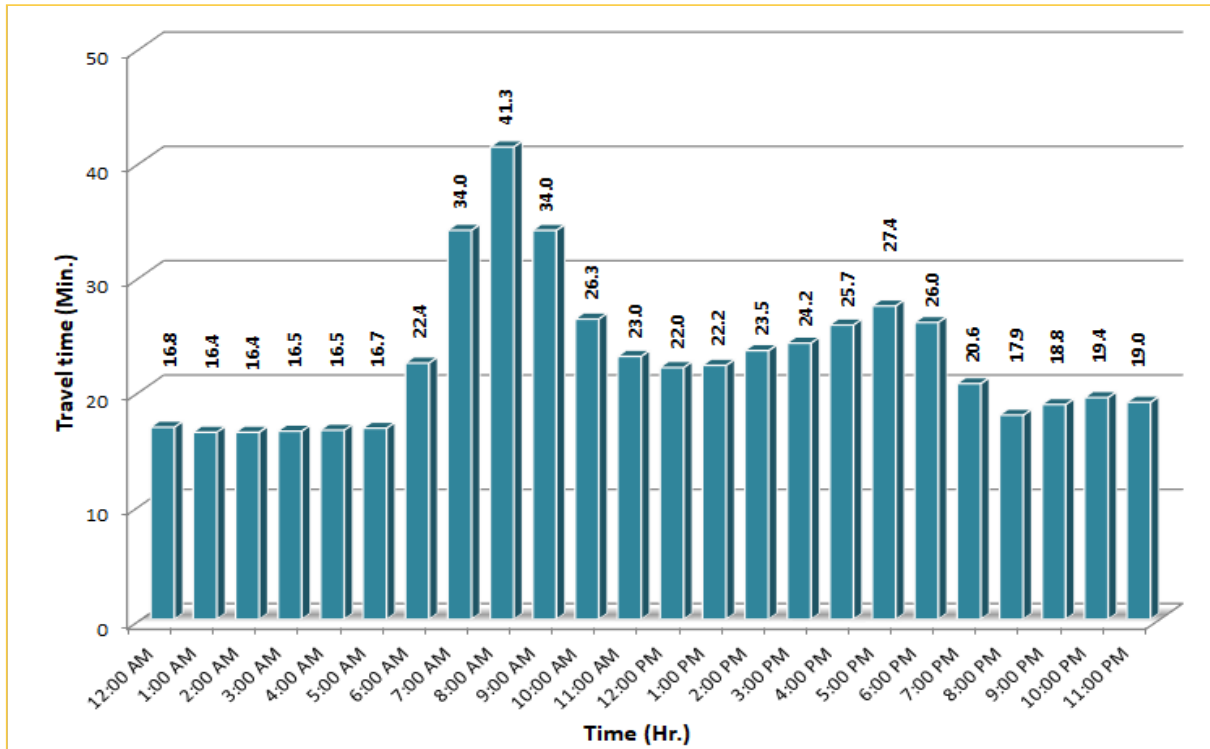
## TRAVEL TIME RELIABILITY REPORT

### Weekdays Travel Times by Time of Day\*

**I-95 Northbound: 17.3 Miles**  
 From: US-1  
 To: Miami-Dade / Broward County Line

**I-95 Southbound: 17.3 Miles**  
 From: Miami-Dade / Broward County Line  
 To: US-1

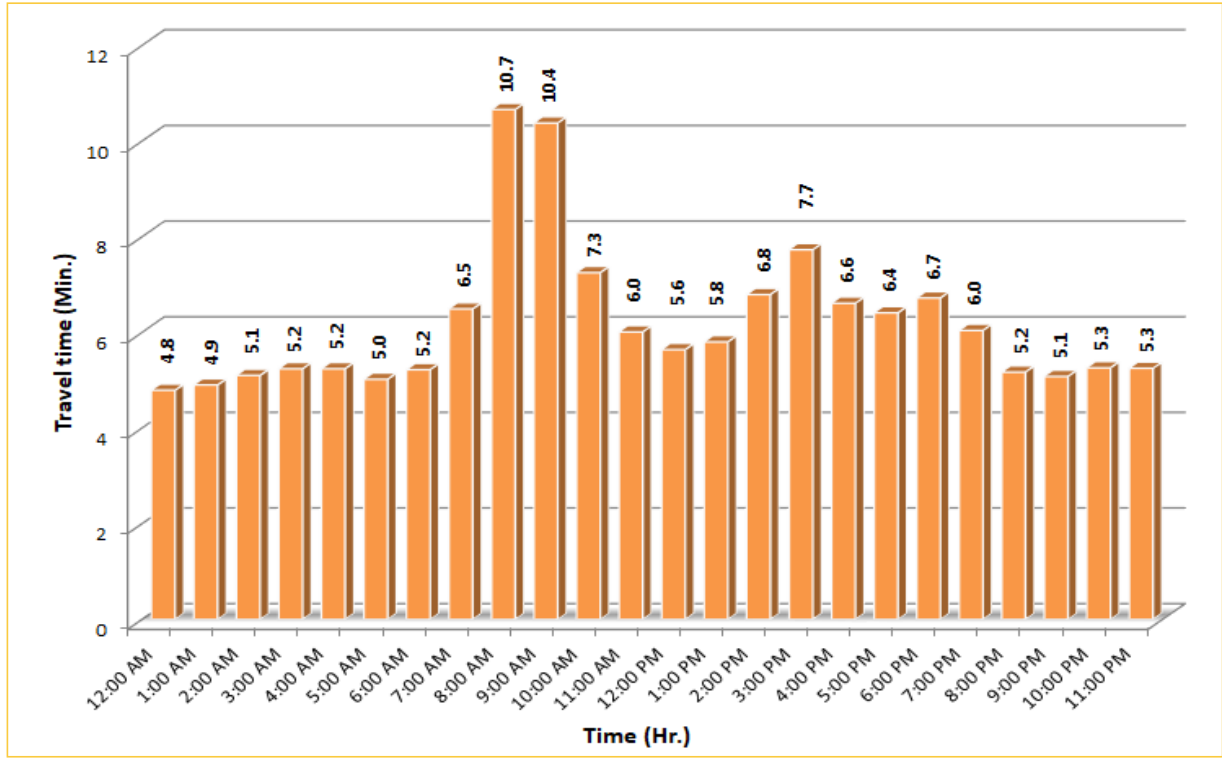



\* Twelve-month weekday average from December 1<sup>st</sup>, 2018 to November 30<sup>th</sup>, 2019. Data obtained from Regional Integrated Transportation System (RITIS), Probe Data Analytics Suite. Excludes express lanes.

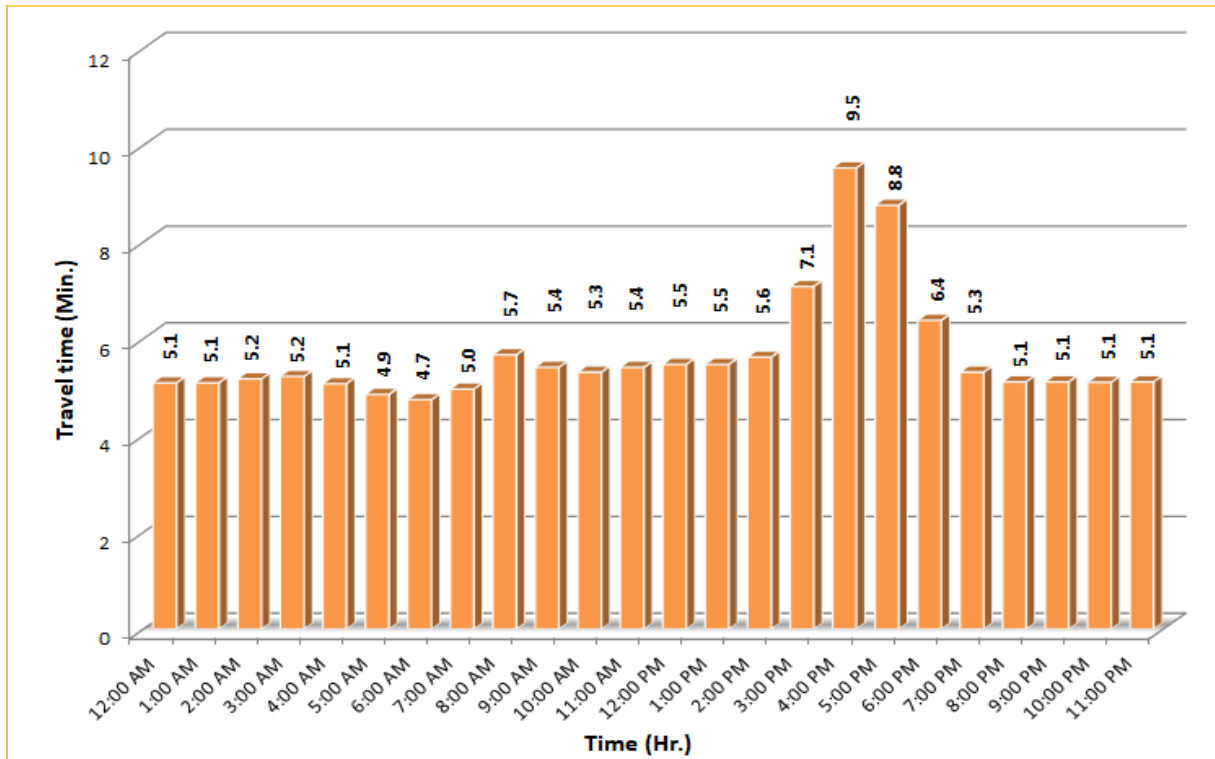
## TRAVEL TIME RELIABILITY REPORT

### Weekdays Travel Times by Time of Day\*

**I-195 Eastbound: 4.9 Miles**  
 From: West of North Miami Avenue  
 To: West of Alton Road

**I-195 Westbound: 4.9 Miles**  
 From: West of Alton Road  
 To: West of North Miami Avenue


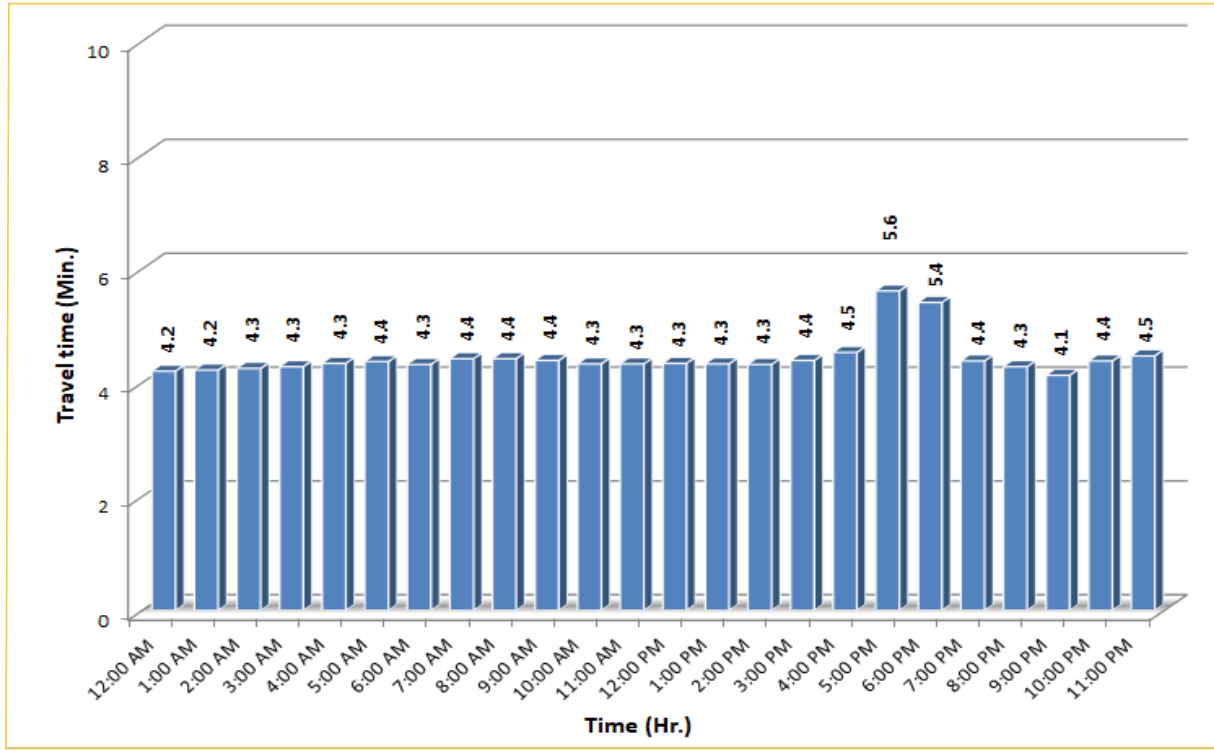



\* Twelve-month weekday average from December 1<sup>st</sup>, 2018 to November 30<sup>th</sup>, 2019. Data obtained from Regional Integrated Transportation System (RITIS), Probe Data Analytics Suite.

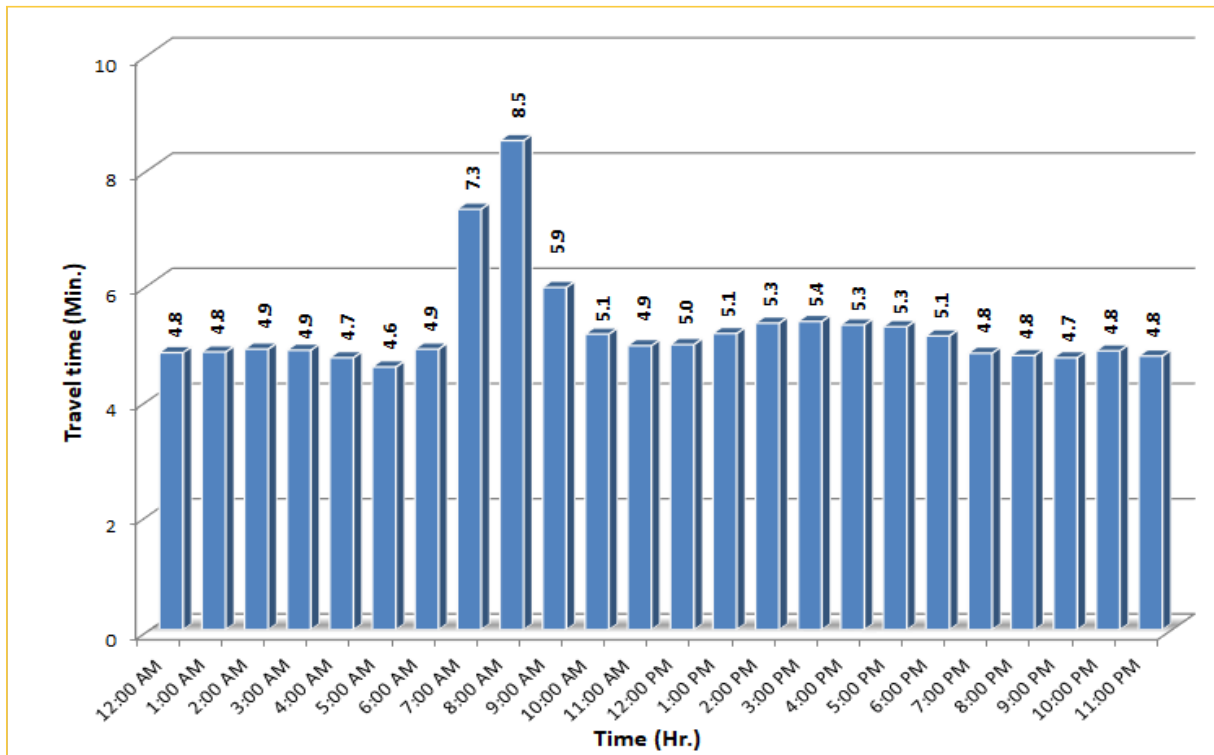
## TRAVEL TIME RELIABILITY REPORT

### Weekdays Travel Times by Time of Day\*

**I-75 Northbound: 5.4 Miles \*\*\***  
 From: West of SR 826  
 To: North of Florida's Turnpike

**I-75 Southbound: 5.4 Miles \*\*\***  
 From: North of Florida's Turnpike  
 To: West of SR 826


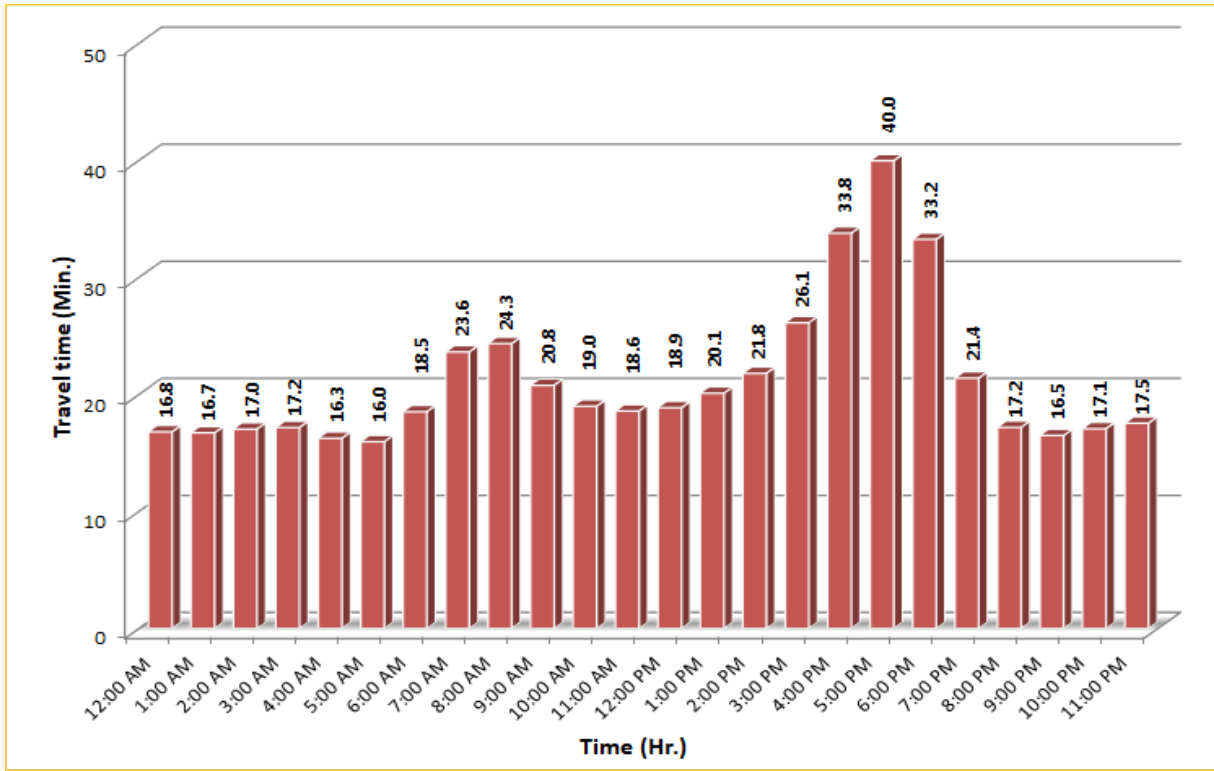



\* Twelve-month weekday average from December 1<sup>st</sup>, 2018 to November 30<sup>th</sup>, 2019. Data obtained from Regional Integrated Transportation System (RITIS), Probe Data Analytics Suite. Excludes express lanes.

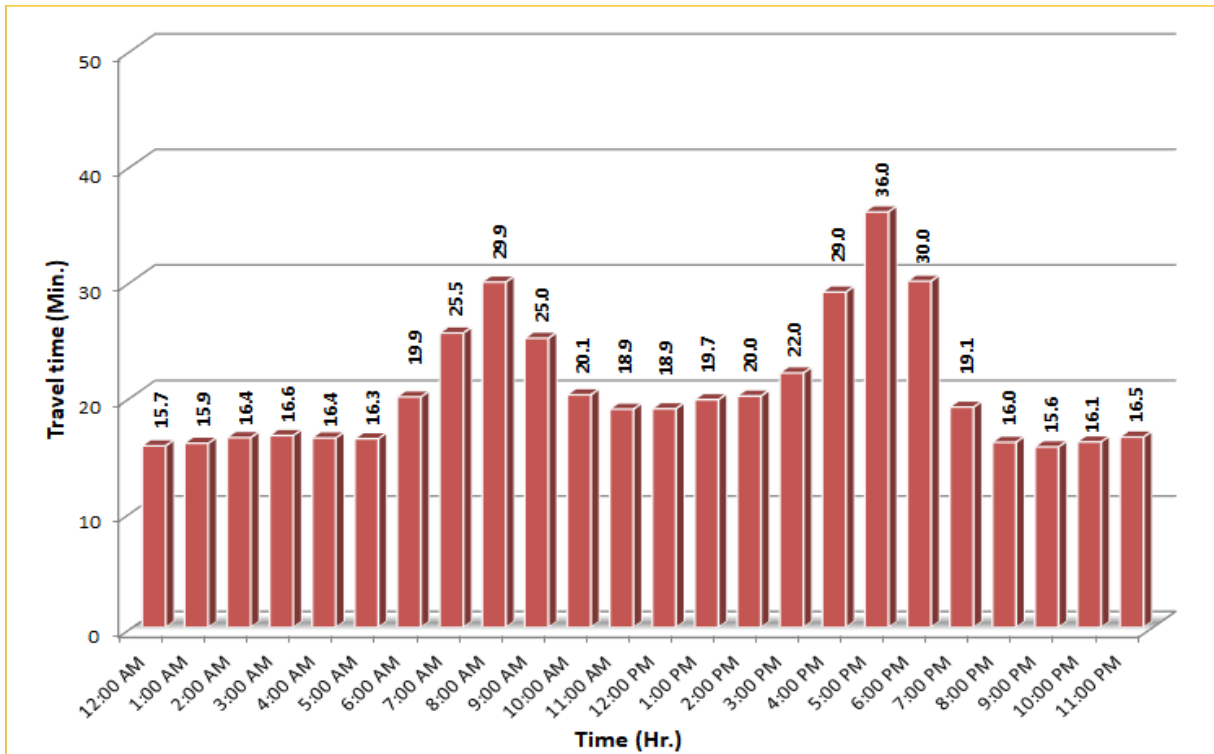
## TRAVEL TIME RELIABILITY REPORT

### Weekdays Travel Times by Time of Day\*

SR 826 Northbound: 16.6 Miles \*\*\*  
 From: US-1  
 To: North of NW 154 Street

SR 826 Southbound: 16.6 Miles \*\*\*  
 From: North of NW 154 Street  
 To: US-1

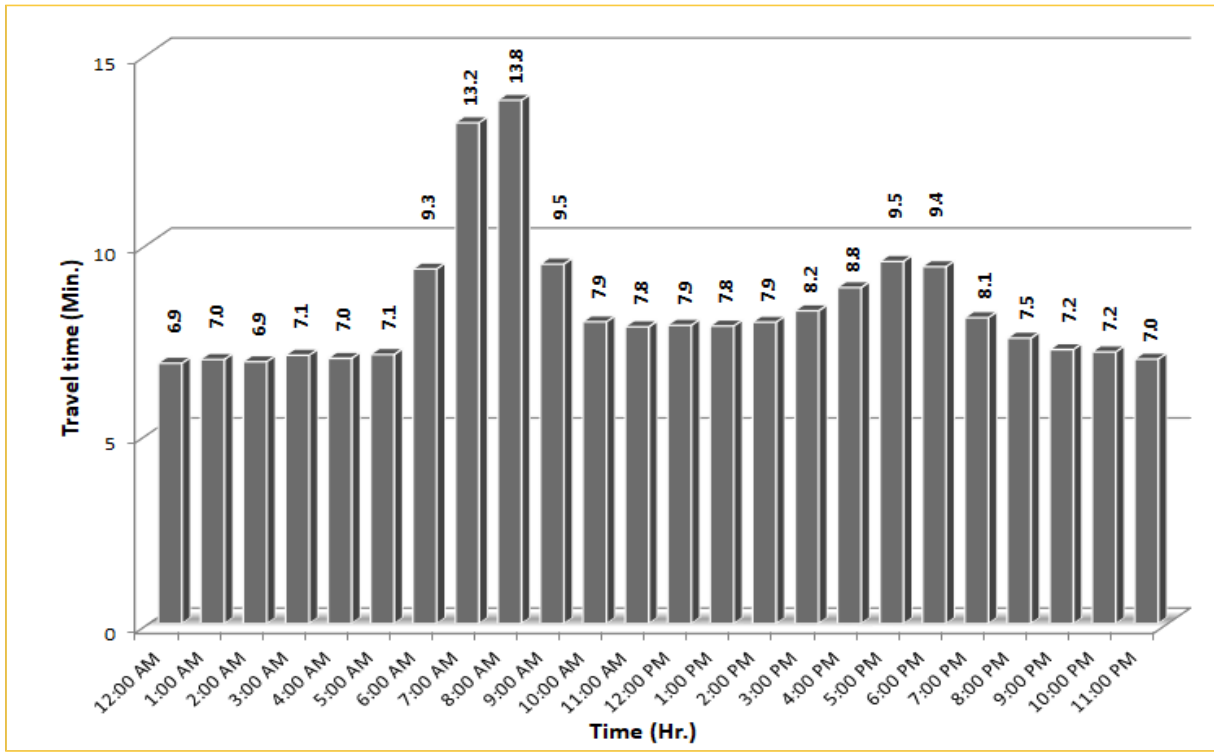



\* Twelve-month weekday average from December 1<sup>st</sup>, 2018 to November 30<sup>th</sup>, 2019. Data obtained from Regional Integrated Transportation System (RITIS), Probe Data Analytics Suite. Excludes express lanes.

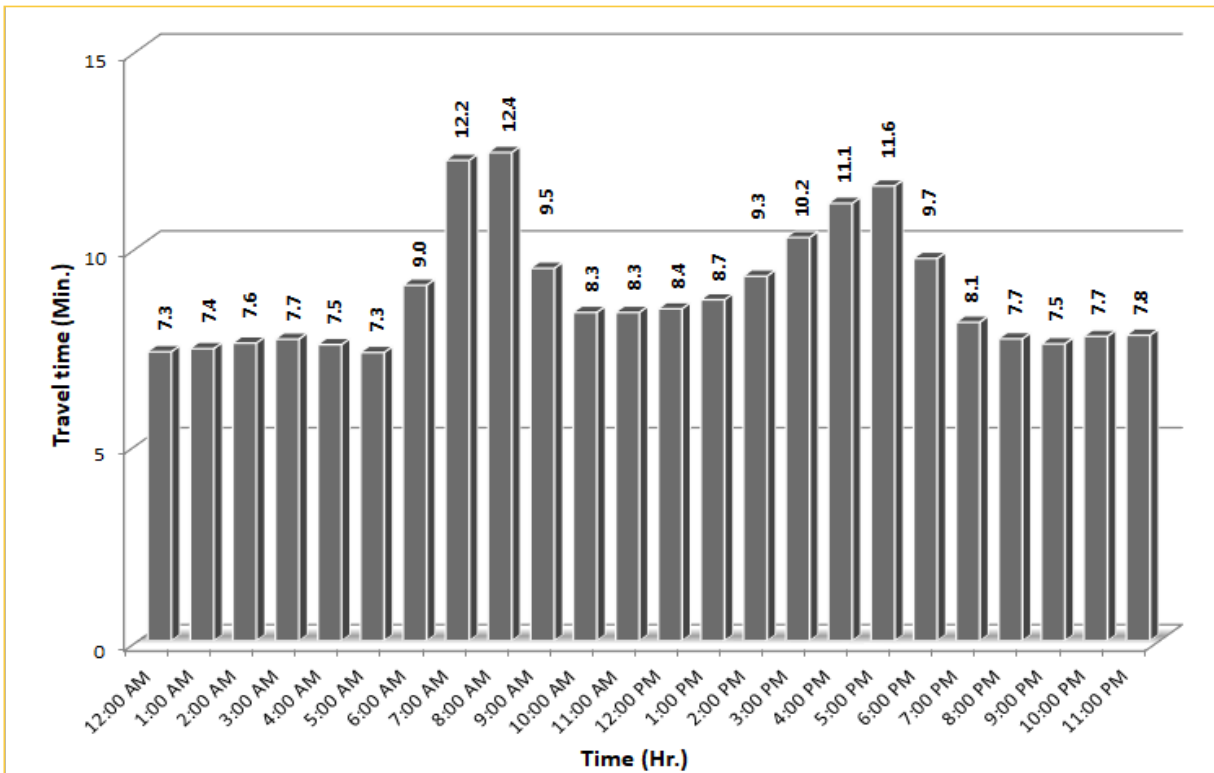
## TRAVEL TIME RELIABILITY REPORT

### Weekdays Travel Times by Time of Day\*

SR 826 Eastbound: 7.1 Miles \*\*\*  
 From: West of NW 67 Avenue  
 To: I-95

SR 826 Westbound: 7.1 Miles \*\*\*  
 From: I-95  
 To: West of NW 67 Avenue

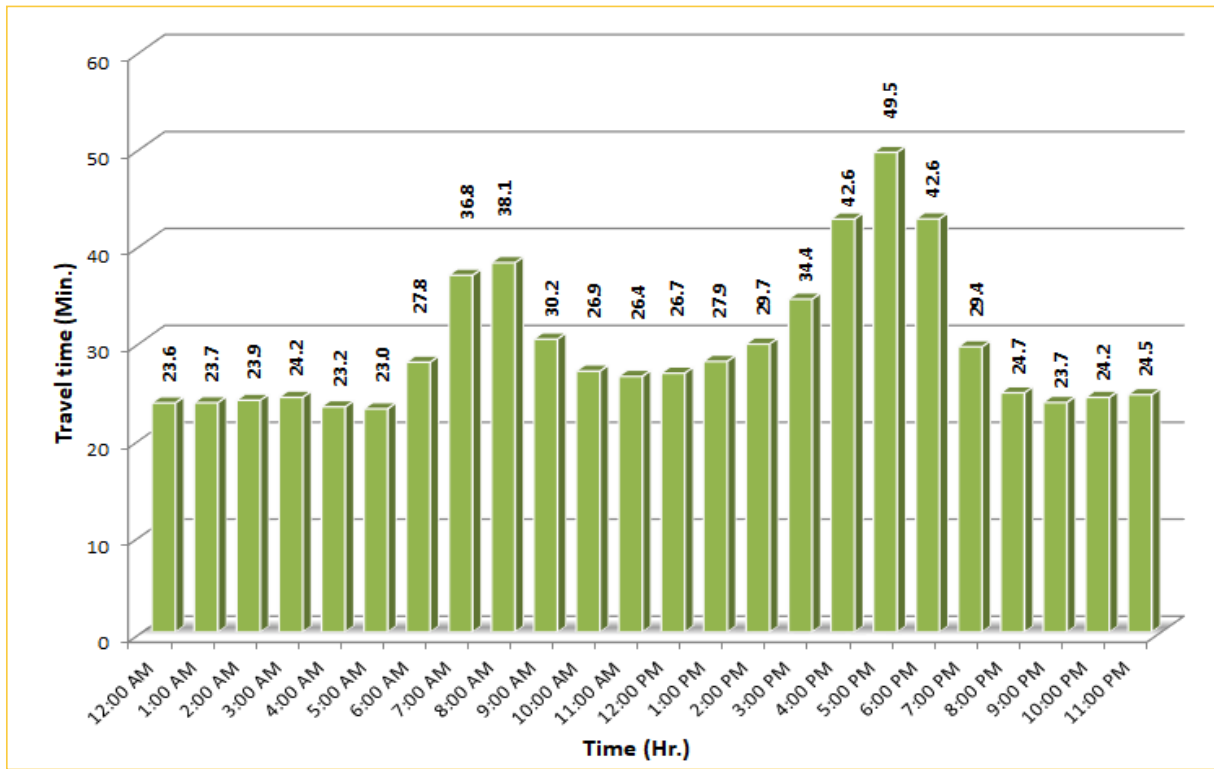



\* Twelve-month weekday average from December 1<sup>st</sup>, 2018 to November 30<sup>th</sup>, 2019. Data obtained from Regional Integrated Transportation System (RITIS), Probe Data Analytics Suite.

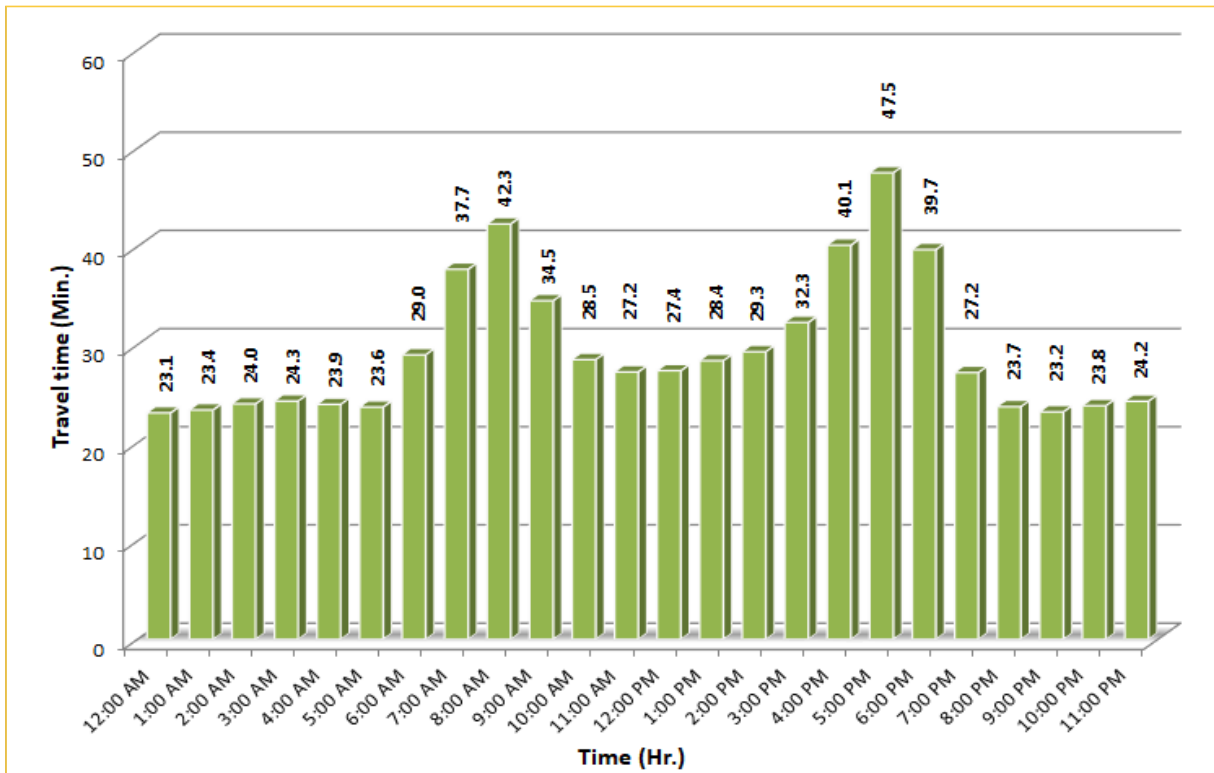
## TRAVEL TIME RELIABILITY REPORT

### Weekdays Travel Times by Time of Day\*

SR 826 Northbound/Eastbound : 24.2 Miles \*\*\*  
 From: US-1  
 To: I-95



SR 826 Southbound/Westbound: 24.2 Miles \*\*\*  
 From: I-95  
 To: US-1

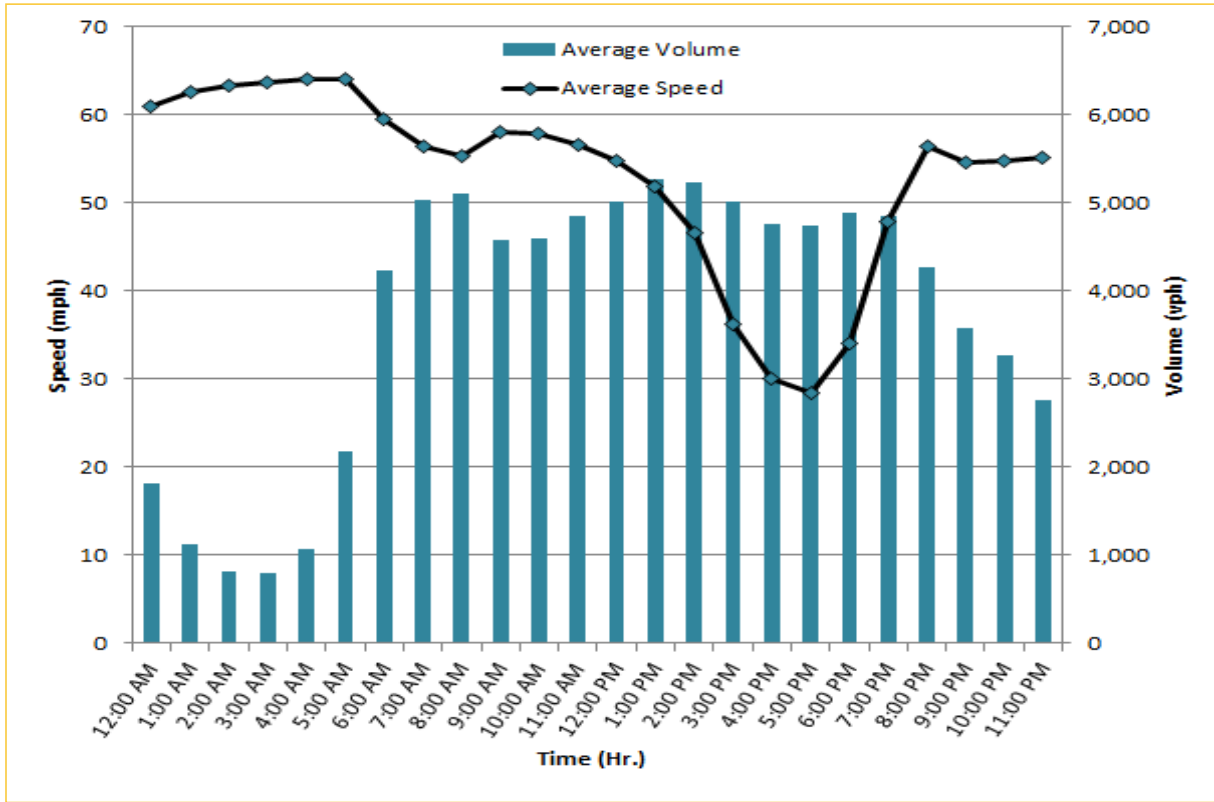


\* Twelve-month weekday average from December 1<sup>st</sup>, 2018 to November 30<sup>th</sup>, 2019. Data obtained from Regional Integrated Transportation System (RITIS), Probe Data Analytics Suite. Excludes express lanes.

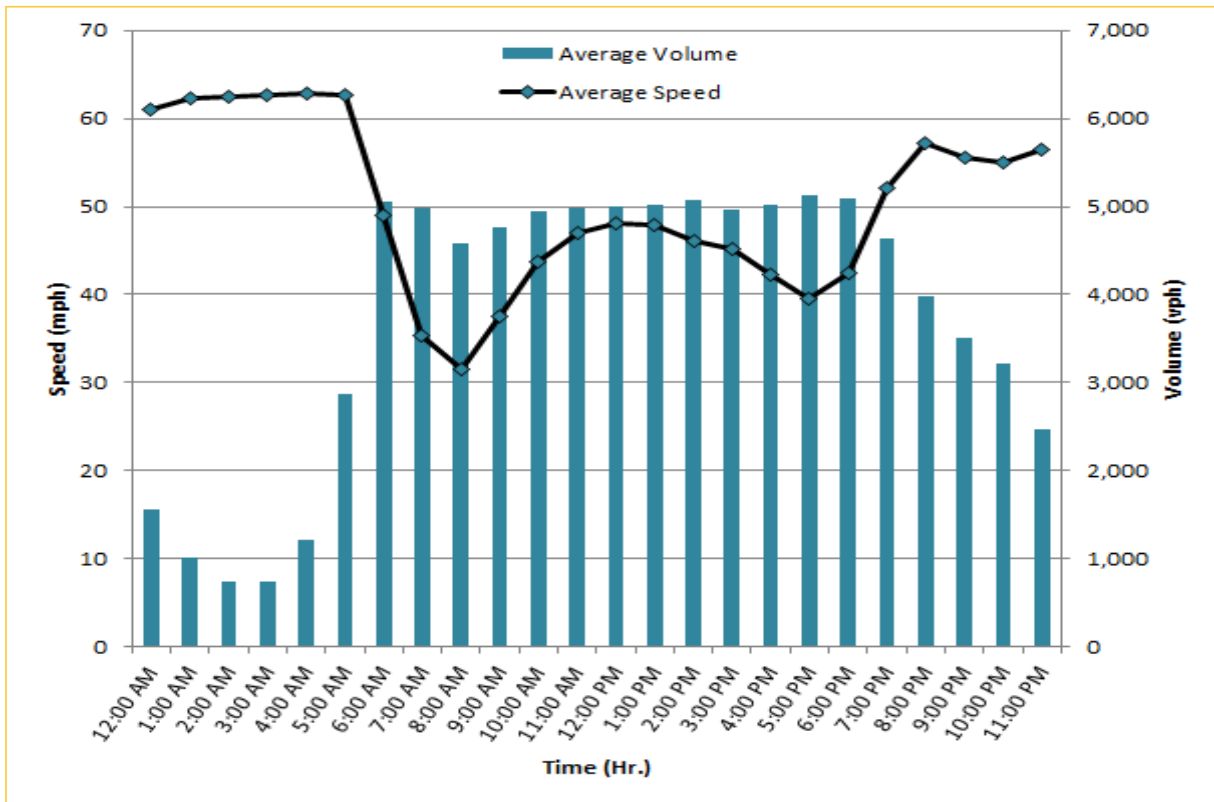
## TRAVEL TIME RELIABILITY REPORT

### Weekdays Speeds and Volumes by Time of Day\*

**I-95 Northbound: 17.3 Miles**  
 From: US-1  
 To: Miami-Dade / Broward County Line

**I-95 Southbound: 17.3 Miles**  
 From: Miami-Dade / Broward County Line  
 To: US-1

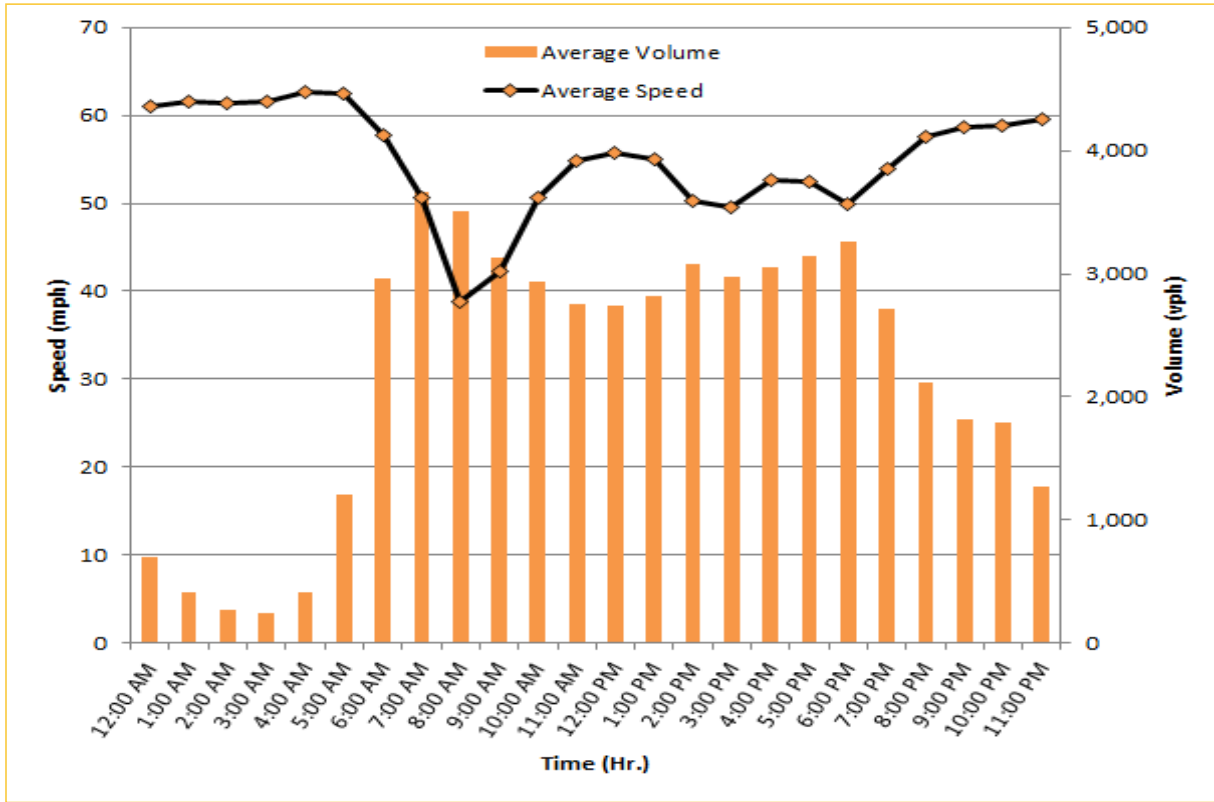
\* Twelve-month weekday average from December 1<sup>st</sup>, 2018 to November 30<sup>th</sup>, 2019. Excludes express lanes.



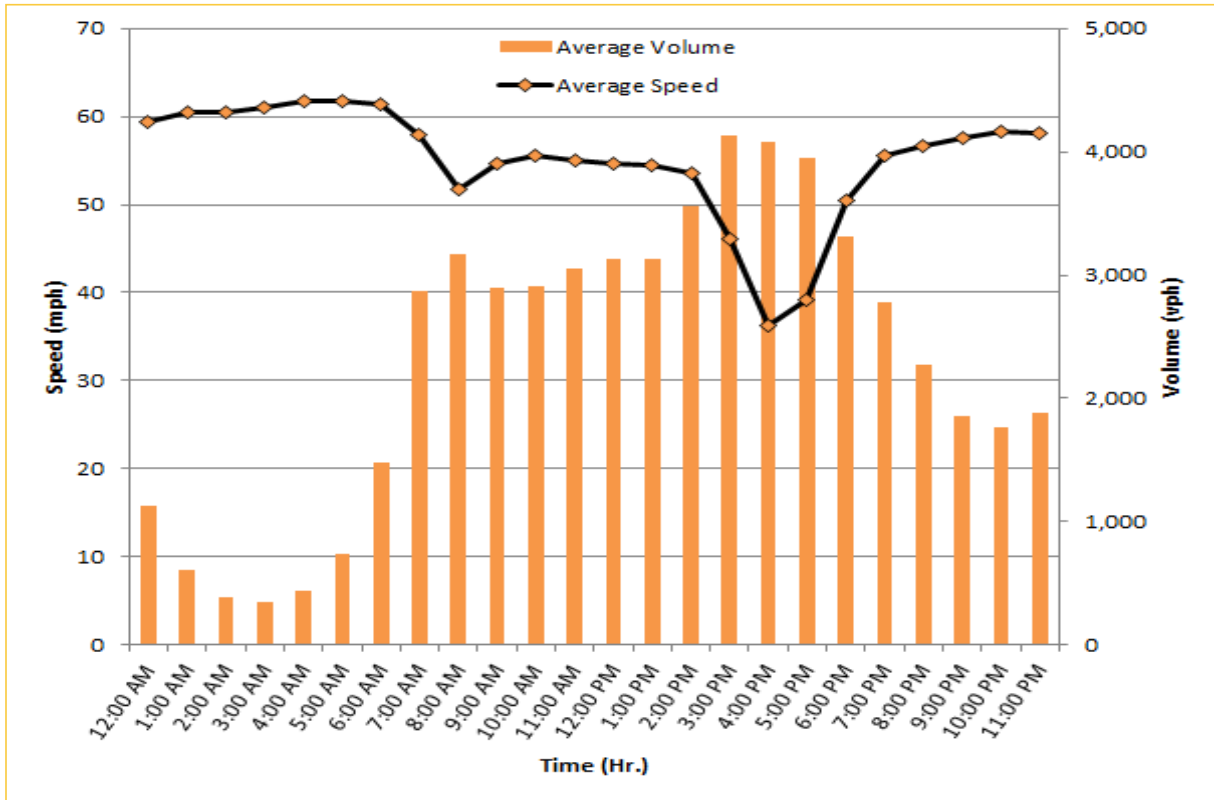
## TRAVEL TIME RELIABILITY REPORT

### Weekdays Speeds and Volumes by Time of Day\*

**I-195 Eastbound: 4.9 Miles**  
 From: West of North Miami Avenue  
 To: West of Alton Road

**I-195 Westbound: 4.9 Miles**  
 From: West of Alton Road  
 To: West of North Miami Avenue


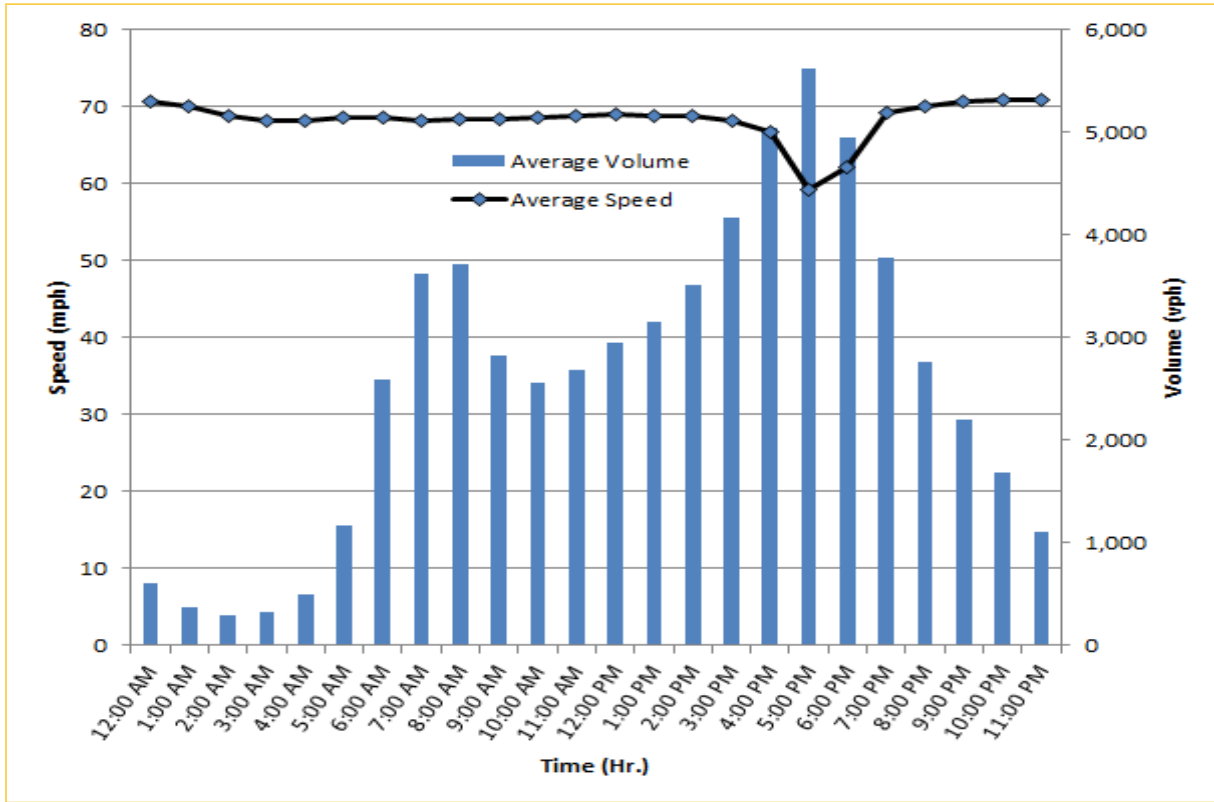



\* Twelve-month weekday average from December 1<sup>st</sup>, 2018 to November 30<sup>th</sup>, 2019.

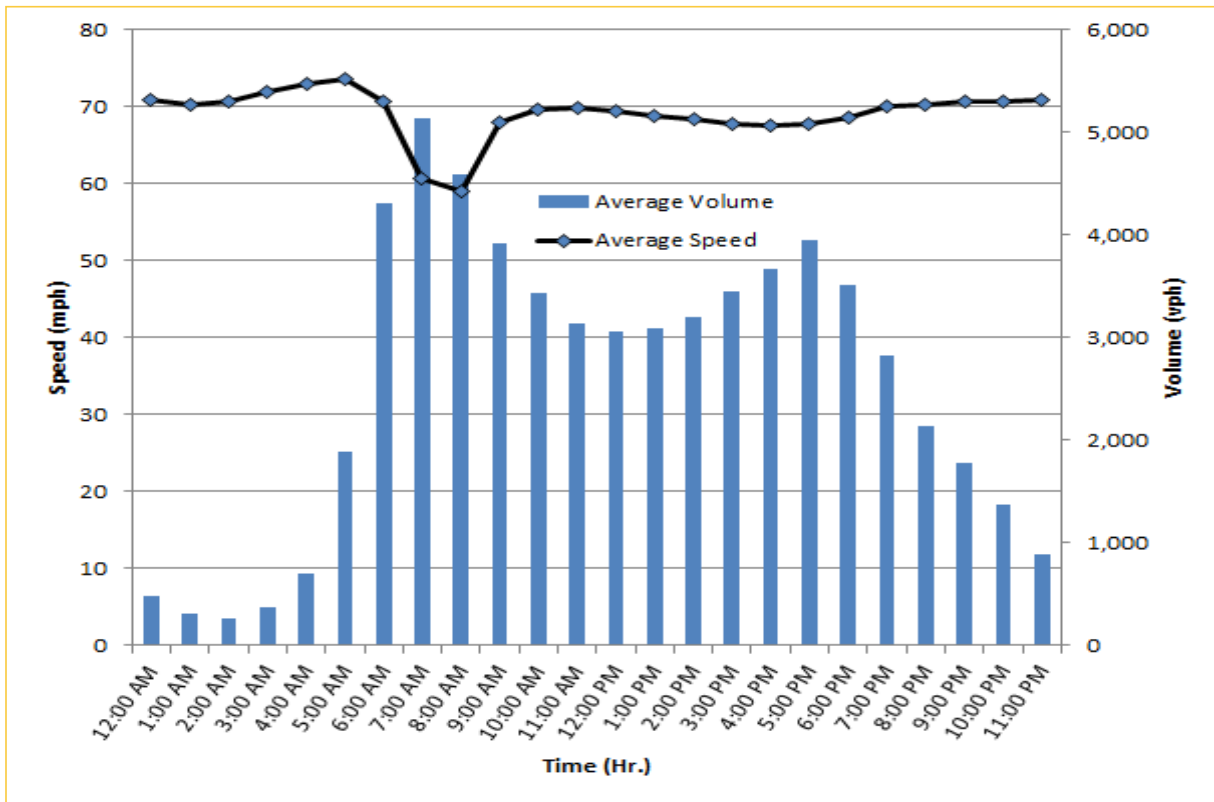
## TRAVEL TIME RELIABILITY REPORT

### Weekdays Speeds and Volumes by Time of Day\*

**I-75 Northbound: 5.4 Miles \*\*\***  
 From: West of SR 826  
 To: North of Florida's Turnpike

**I-75 Southbound: 5.4 Miles \*\*\***  
 From: North of Florida's Turnpike  
 To: West of SR 826

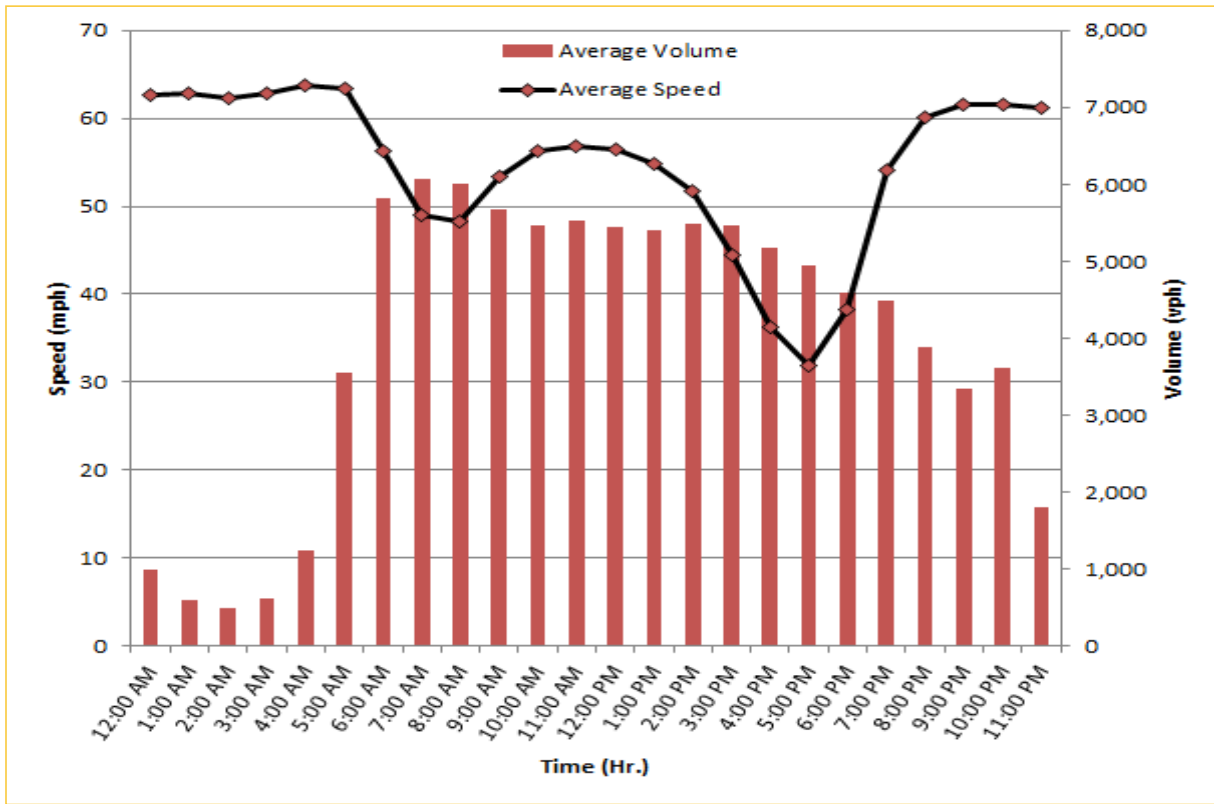



\* Twelve-month weekday average from December 1<sup>st</sup>, 2018 to November 30<sup>th</sup>, 2019. Excludes express lanes.  
 \*\*\* Average Speeds and Volumes were obtained from Regional Integrated Transportation System (RITIS).

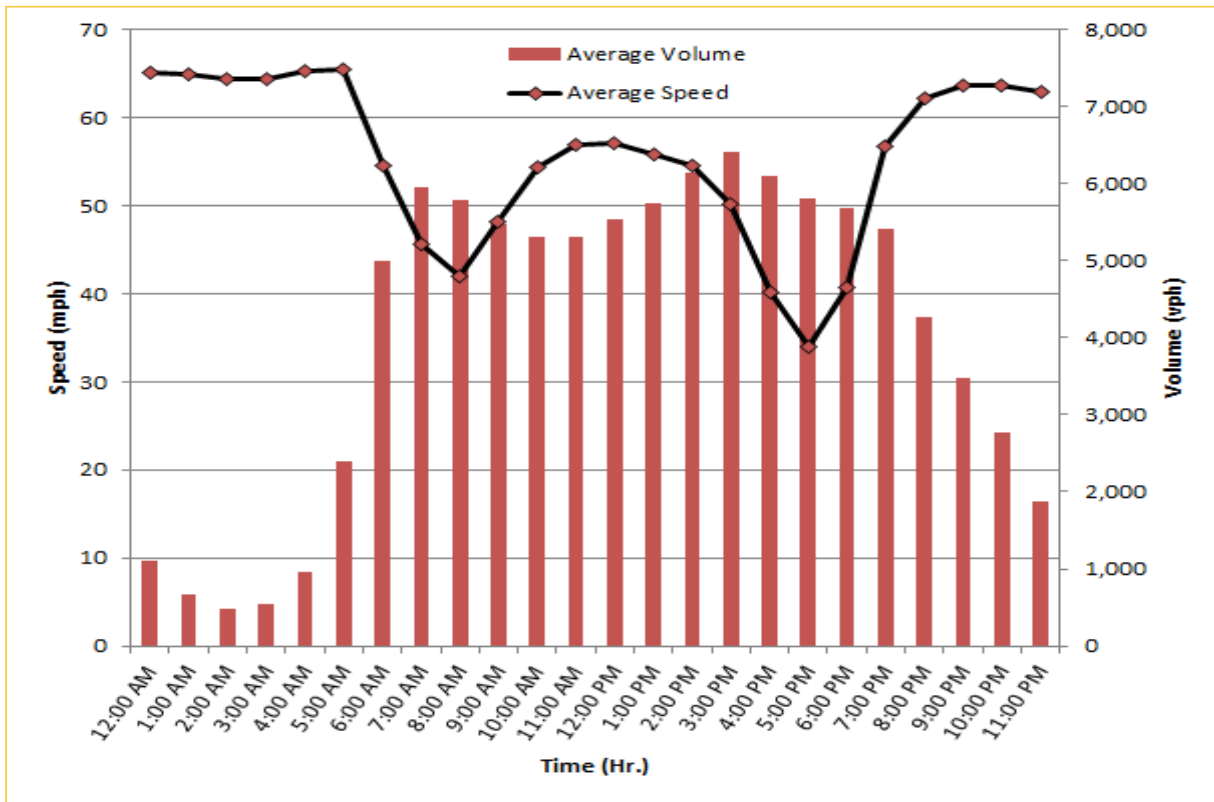
## TRAVEL TIME RELIABILITY REPORT

### Weekdays Speeds and Volumes by Time of Day\*

**SR 826 Northbound: 16.6 Miles**  
 From: US-1  
 To: North of NW 154 Street

**SR 826 Southbound: 16.6 Miles**  
 From: North of NW 154 Street  
 To: US-1

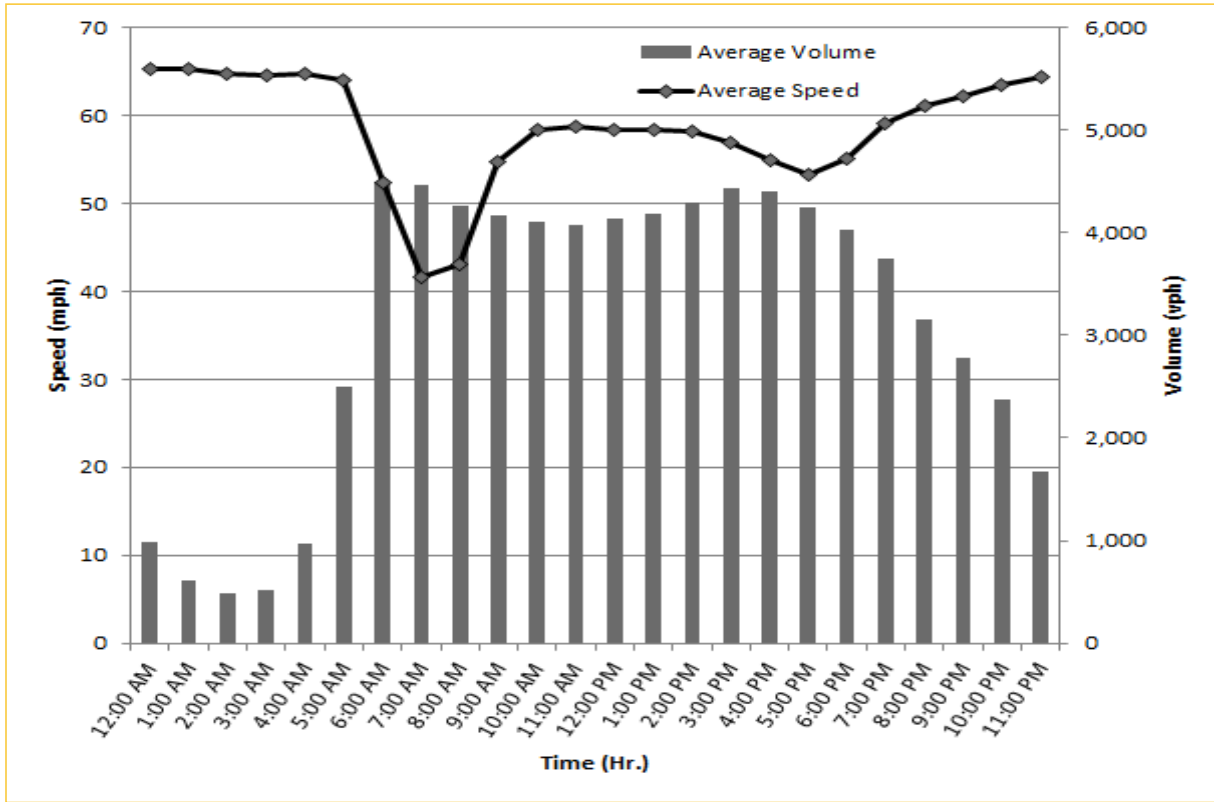



\* Twelve-month weekday average from December 1<sup>st</sup>, 2018 to November 30<sup>th</sup>, 2019. Excludes express lanes.

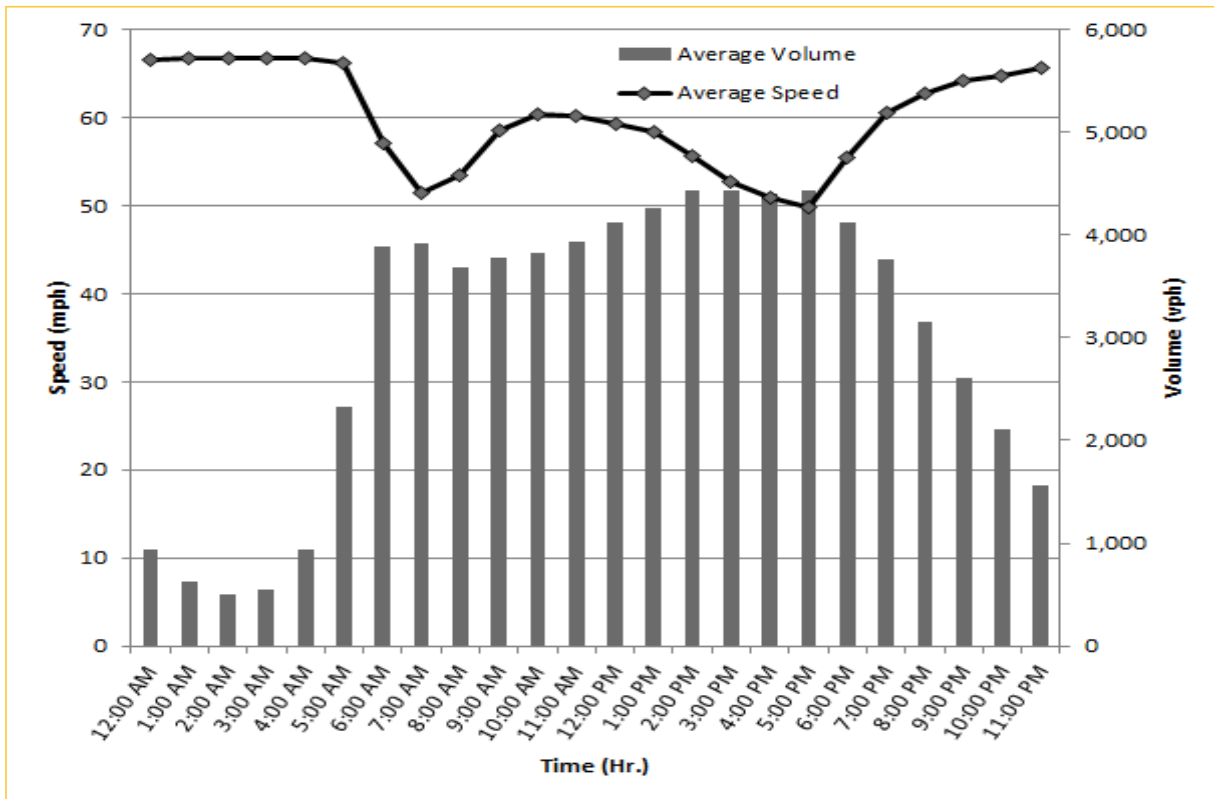
## TRAVEL TIME RELIABILITY REPORT

### Weekdays Speeds and Volumes by Time of Day\*

SR 826 Eastbound: 7.1 Miles  
 From: West of NW 67 Avenue  
 To: I-95

SR 826 Westbound: 7.1 Miles \*\*\*  
 From: I-95  
 To: West of NW 67 Avenue

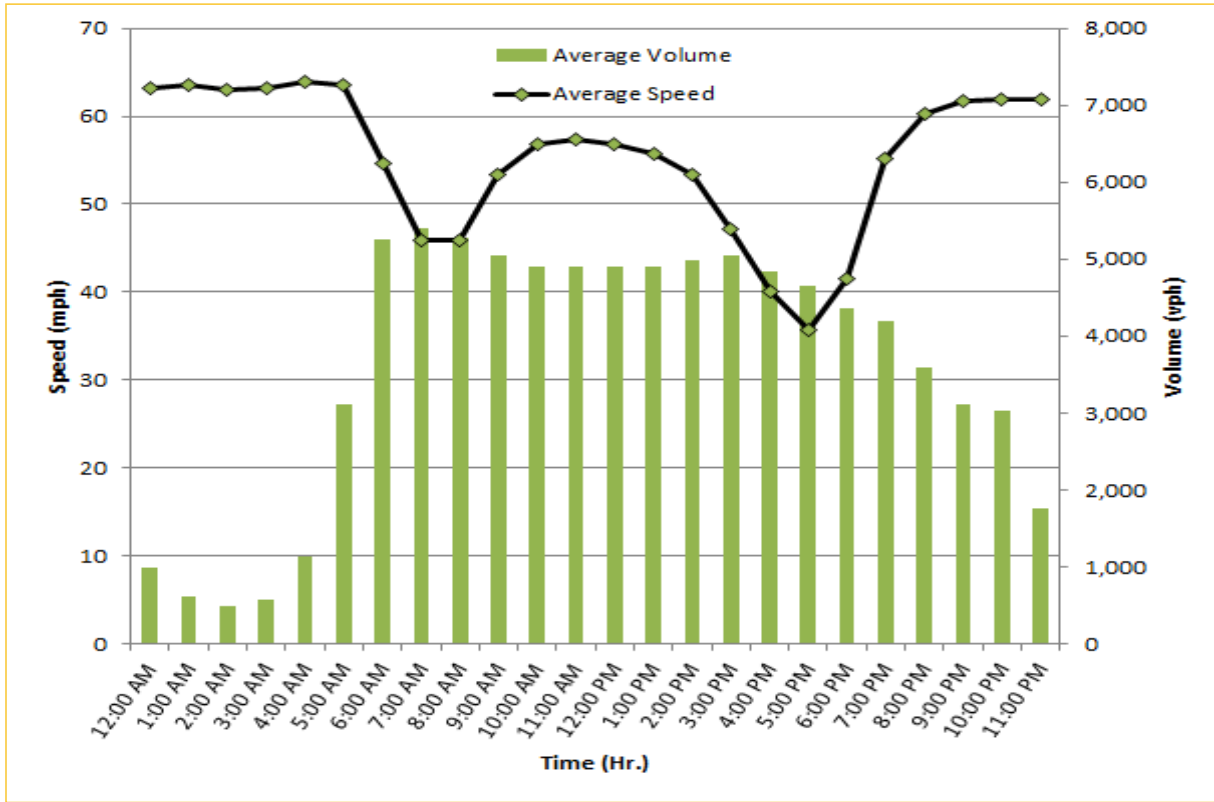
\* Twelve-month weekday average from December 1<sup>st</sup>, 2018 to November 30<sup>th</sup>, 2019.

\*\*\* Average Speeds and Volumes were obtained from Regional Integrated Transportation System (RITIS).

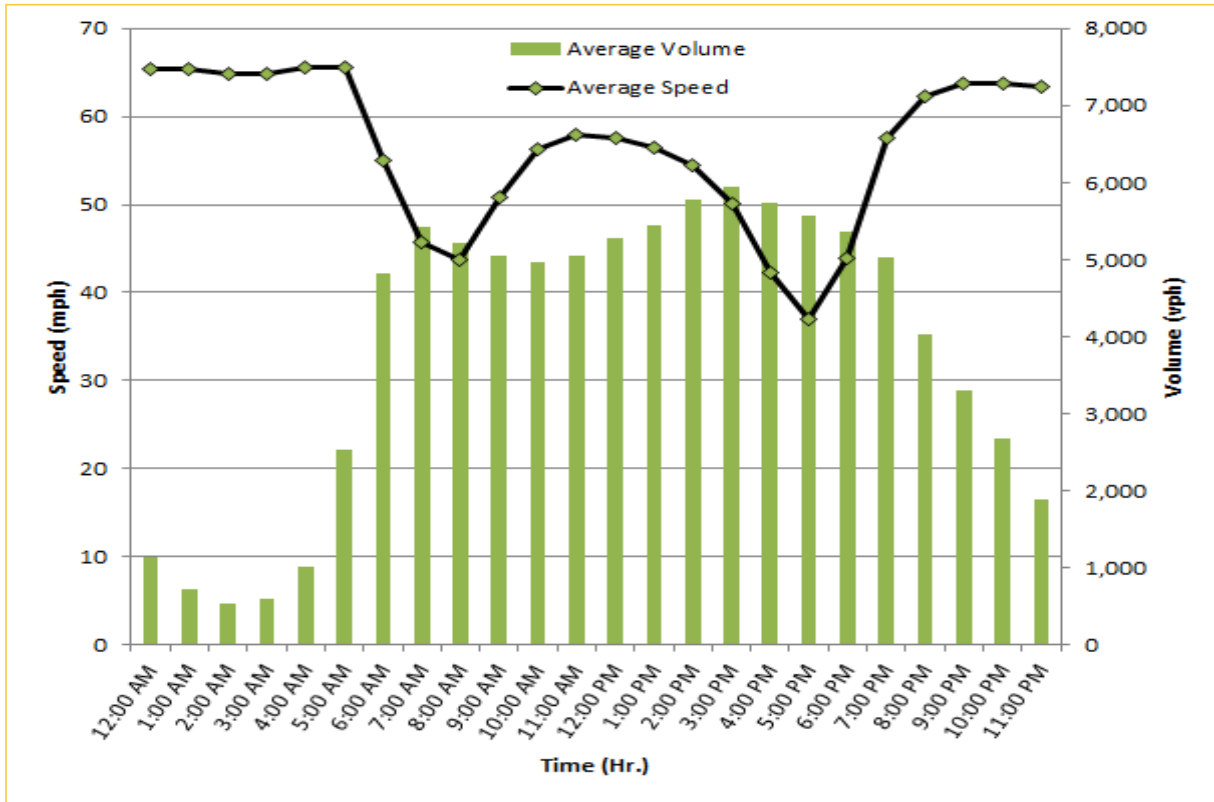
# TRAVEL TIME RELIABILITY REPORT

## Weekdays Speeds and Volumes by Time of Day\*

SR 826 Northbound/Eastbound : 24.2 Miles  
 From: US-1  
 To: I-95

SR 826 Southbound/Westbound: 24.2 Miles  
 From: I-95  
 To: US-1

\* Twelve-month weekday average from December 1<sup>st</sup>, 2018 to November 30<sup>th</sup>, 2019. Excludes express lanes.