

## TRAVEL TIME RELIABILITY REPORT

### Travel Time Index by Roadway\*

Time	I-95		I-195		I-75		SR 826					
	NB	SB	EB	WB	NB	SB	NB***	EB	NE***	SB***	WB	SW***
0:00	1.06	1.05	0.99	1.01	1.04	1.12	1.05	0.99	1.02	1.00	0.98	0.99
1:00	1.02	1.05	0.98	1.01	1.07	1.09	1.05	1.00	1.03	1.00	0.98	0.99
2:00	1.01	1.05	0.99	1.01	1.14	1.11	1.06	1.01	1.04	1.02	0.98	1.00
3:00	1.01	1.05	0.99	1.00	1.17	1.11	1.05	1.01	1.03	1.01	0.98	1.00
4:00	1.01	1.04	0.97	0.99	1.20	1.08	1.03	1.01	1.02	1.01	0.98	0.99
5:00	1.02	1.05	0.98	0.99	1.15	1.06	1.03	1.01	1.02	1.00	0.97	0.99
6:00	1.11	1.44	1.09	0.99	1.07	1.10	1.16	1.27	1.16	1.19	1.15	1.16
7:00	1.17	2.07	1.26	1.02	1.05	1.27	1.39	1.58	1.42	1.48	1.37	1.42
8:00	1.23	2.45	1.68	1.13	1.05	1.28	1.43	1.53	1.42	1.62	1.37	1.49
9:00	1.15	1.93	1.37	1.06	1.06	1.16	1.27	1.22	1.24	1.40	1.18	1.31
10:00	1.13	1.50	1.15	1.08	1.07	1.12	1.18	1.13	1.16	1.23	1.10	1.18
11:00	1.14	1.40	1.10	1.10	1.07	1.10	1.17	1.11	1.15	1.16	1.08	1.13
12:00	1.17	1.35	1.09	1.10	1.06	1.11	1.18	1.10	1.15	1.16	1.10	1.14
13:00	1.24	1.31	1.08	1.10	1.06	1.11	1.20	1.11	1.17	1.19	1.10	1.16
14:00	1.38	1.36	1.15	1.14	1.05	1.10	1.24	1.14	1.21	1.22	1.18	1.20
15:00	1.80	1.42	1.15	1.51	1.04	1.11	1.45	1.16	1.36	1.33	1.26	1.30
16:00	2.16	1.51	1.09	1.86	1.05	1.11	1.81	1.16	1.61	1.64	1.39	1.56
17:00	2.31	1.63	1.10	1.73	1.15	1.11	2.09	1.24	1.83	1.96	1.41	1.76
18:00	2.00	1.59	1.18	1.30	1.11	1.10	1.76	1.20	1.57	1.72	1.20	1.53
19:00	1.45	1.30	1.12	1.09	1.02	1.08	1.21	1.10	1.16	1.16	1.06	1.12
20:00	1.18	1.16	1.06	1.06	1.00	1.11	1.08	1.05	1.06	1.05	1.02	1.03
21:00	1.12	1.13	1.04	1.04	1.01	1.06	1.07	1.03	1.05	1.03	1.00	1.02
22:00	1.12	1.13	1.04	1.03	1.02	1.06	1.09	1.01	1.06	1.05	1.03	1.04
23:00	1.16	1.10	1.02	1.03	1.05	1.11	1.10	1.00	1.06	1.08	1.03	1.05
<b>FFS**</b>	<b>64 mph</b>	<b>64 mph</b>	<b>59 mph</b>	<b>60 mph</b>	<b>67 mph</b>	<b>65 mph</b>	<b>62 mph</b>	<b>63 mph</b>	<b>62 mph</b>	<b>64 mph</b>	<b>61 mph</b>	<b>63 mph</b>

*Maximum Travel Time Index.*

**Travel Time Index (TTI)** is a measure of average conditions that indicates how much longer, **on average**, travel times are during congestion compared to during light traffic.

**Real World Example:** A TTI of 1.60 means that for a trip that usually takes 10 minutes in light traffic, a traveler should budget for an additional 6 minutes **on average**.

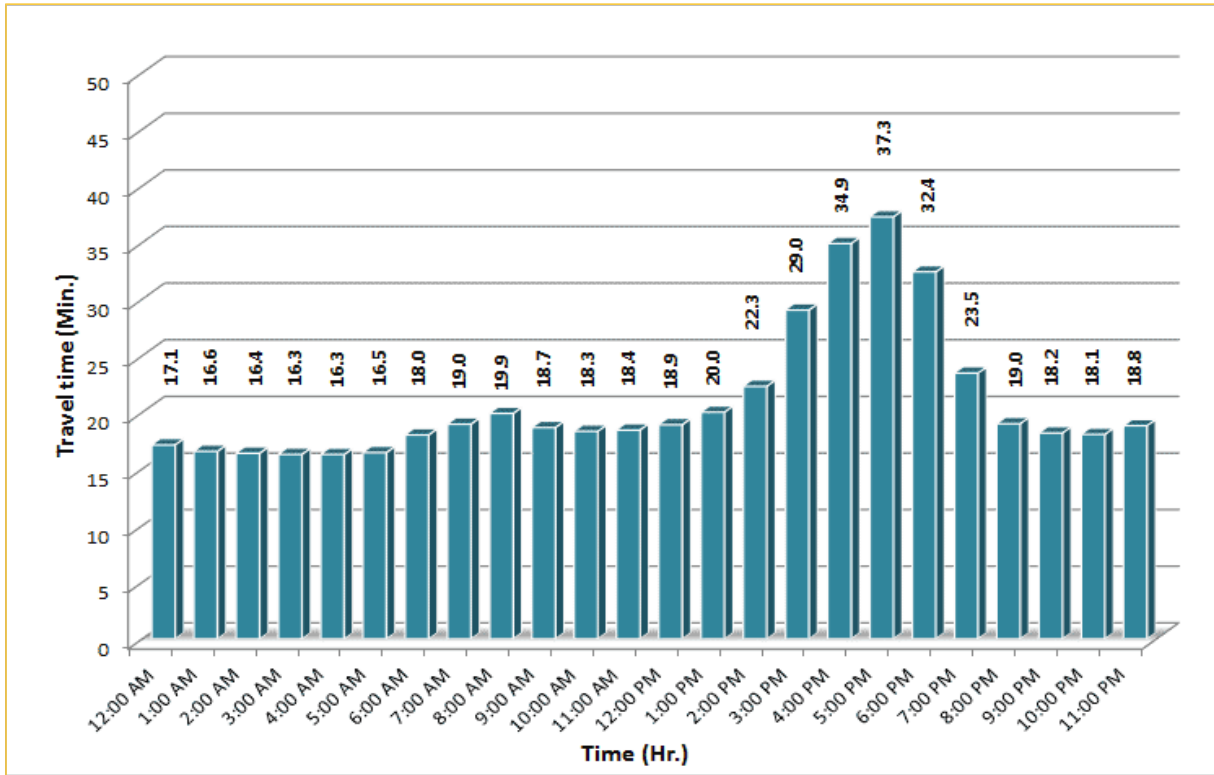


\* Twelve-month average from September 1<sup>st</sup>, 2017 to August 31<sup>st</sup>, 2018.  
 \*\* FFS: Free Flow Speed.  
 \*\*\* Five-month average from April 1<sup>st</sup>, 2018 to August 31<sup>st</sup>, 2018.

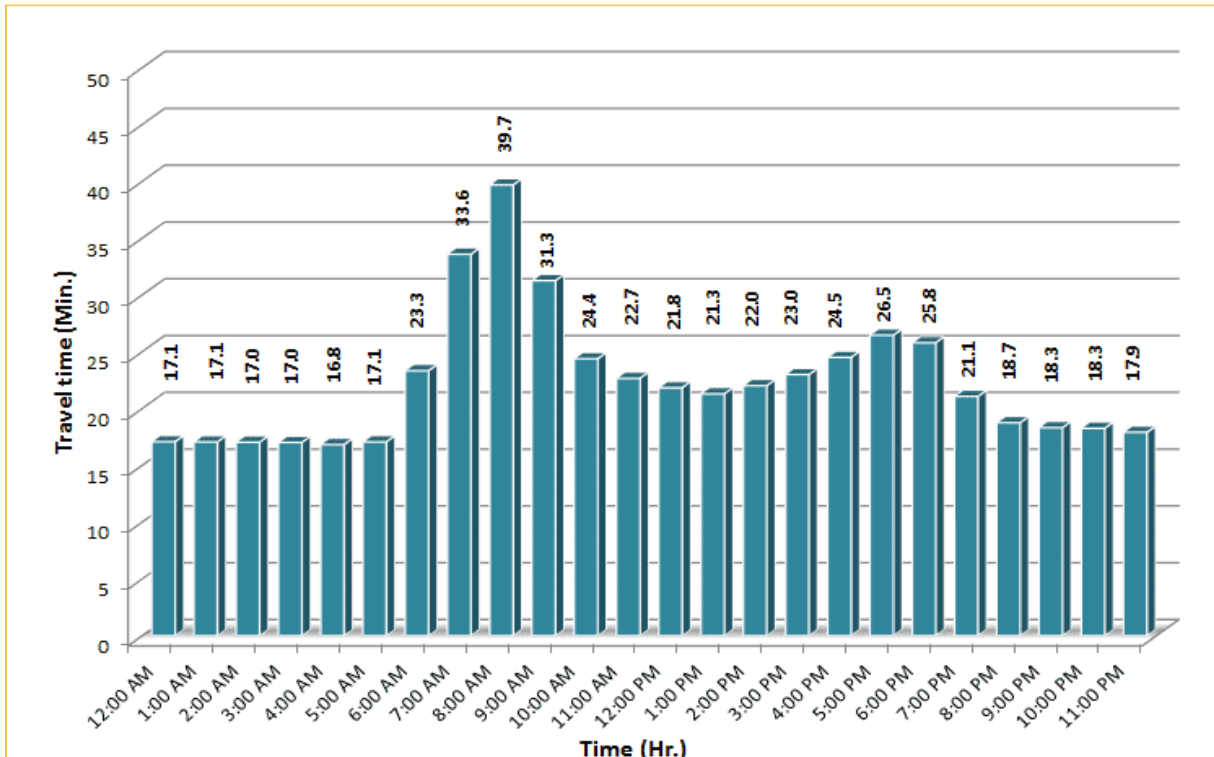
## TRAVEL TIME RELIABILITY REPORT

### Weekdays Travel Times by Time of Day\*

**I-95 Northbound: 17.3 Miles**  
 From: US-1  
 To: Miami-Dade / Broward County Line

**I-95 Southbound: 17.3 Miles**  
 From: Miami-Dade / Broward County Line  
 To: US-1

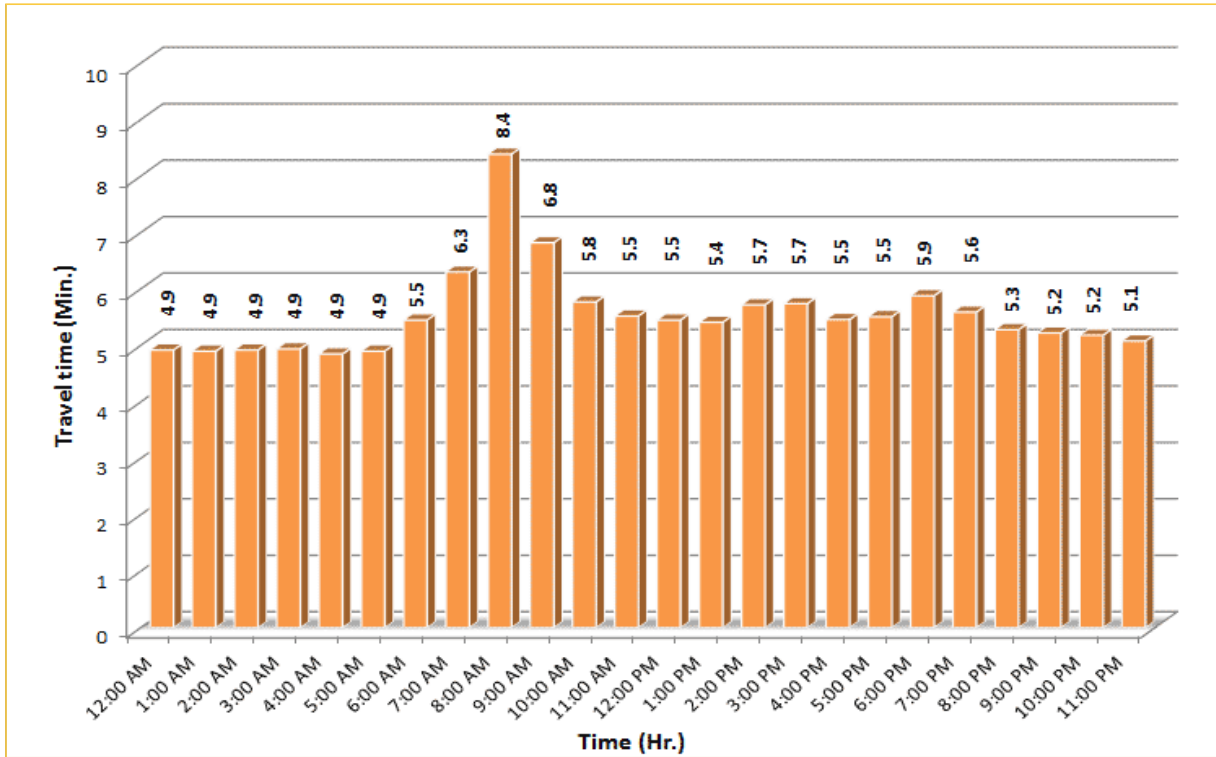



\* Twelve-month average from September 1<sup>st</sup>, 2017 to August 31<sup>st</sup>, 2018. Excludes express lanes.

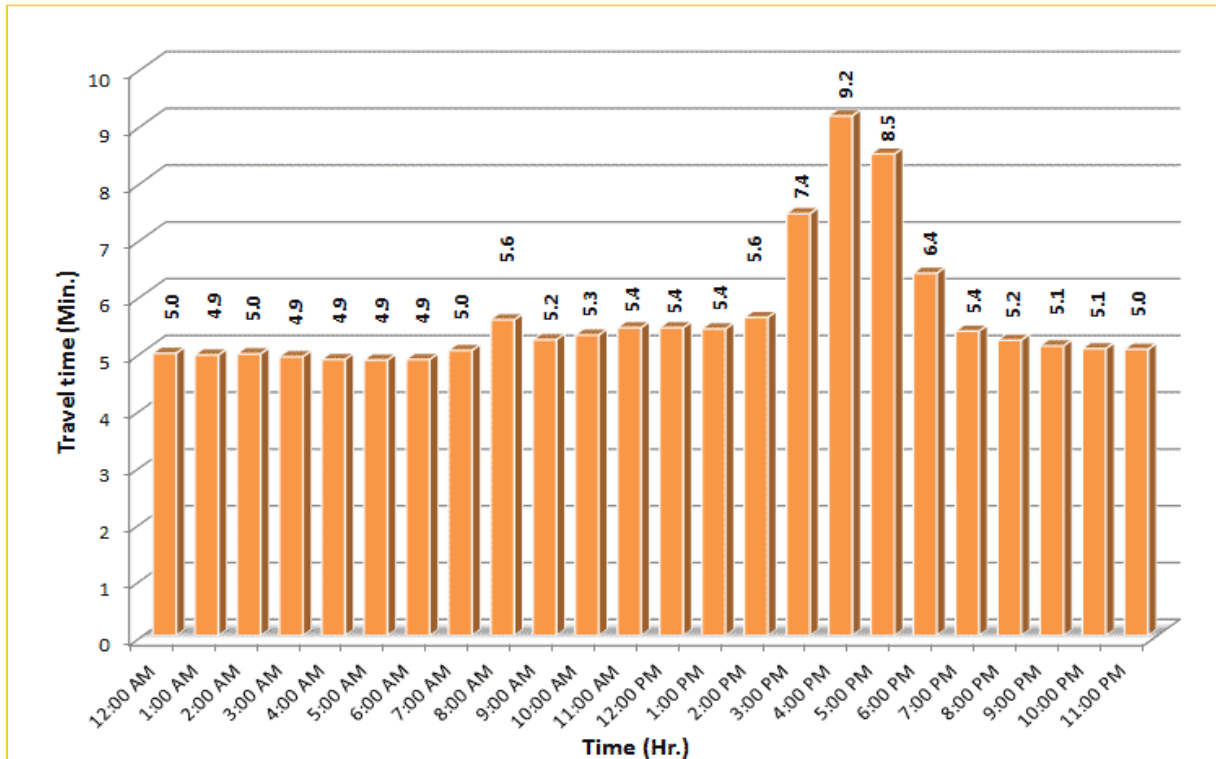
## TRAVEL TIME RELIABILITY REPORT

### Weekdays Travel Times by Time of Day\*

**I-195 Eastbound: 4.9 Miles**  
 From: West of North Miami Avenue  
 To: West of Alton Road



**I-195 Westbound: 4.9 Miles**  
 From: West of Alton Road  
 To: West of North Miami Avenue

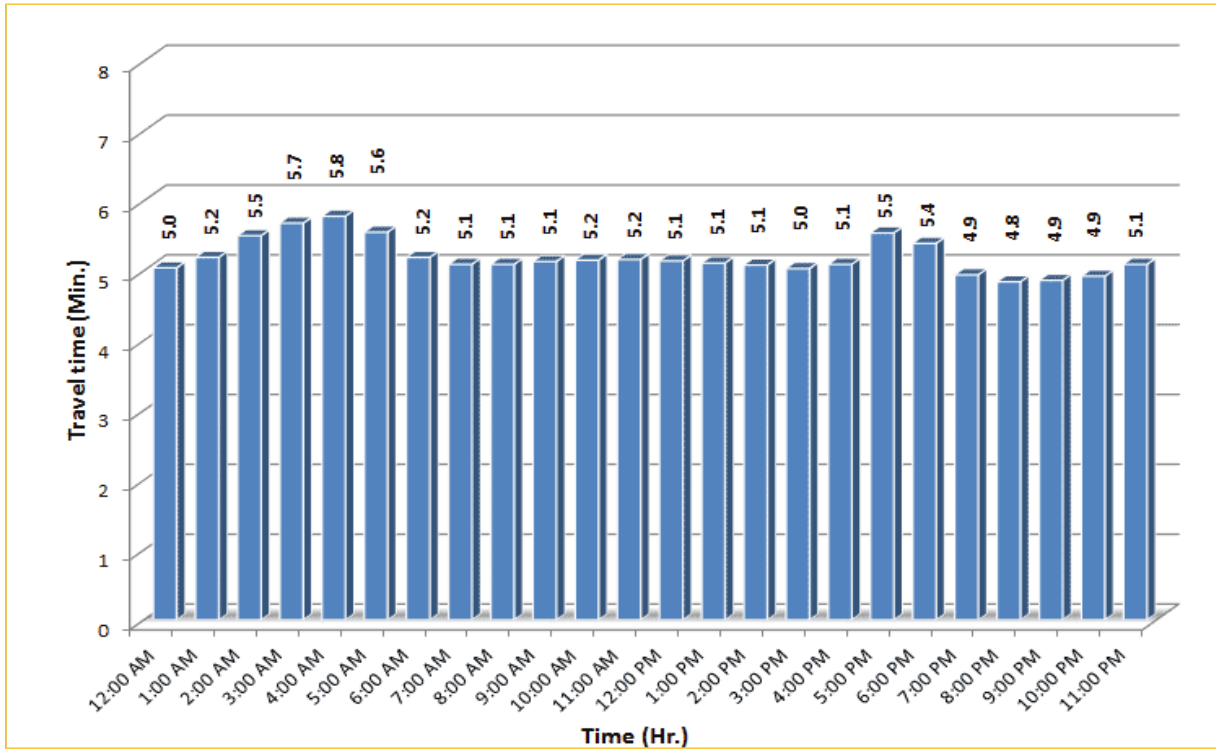


\* Twelve-month average from September 1<sup>st</sup>, 2017 to August 31<sup>st</sup>, 2018.

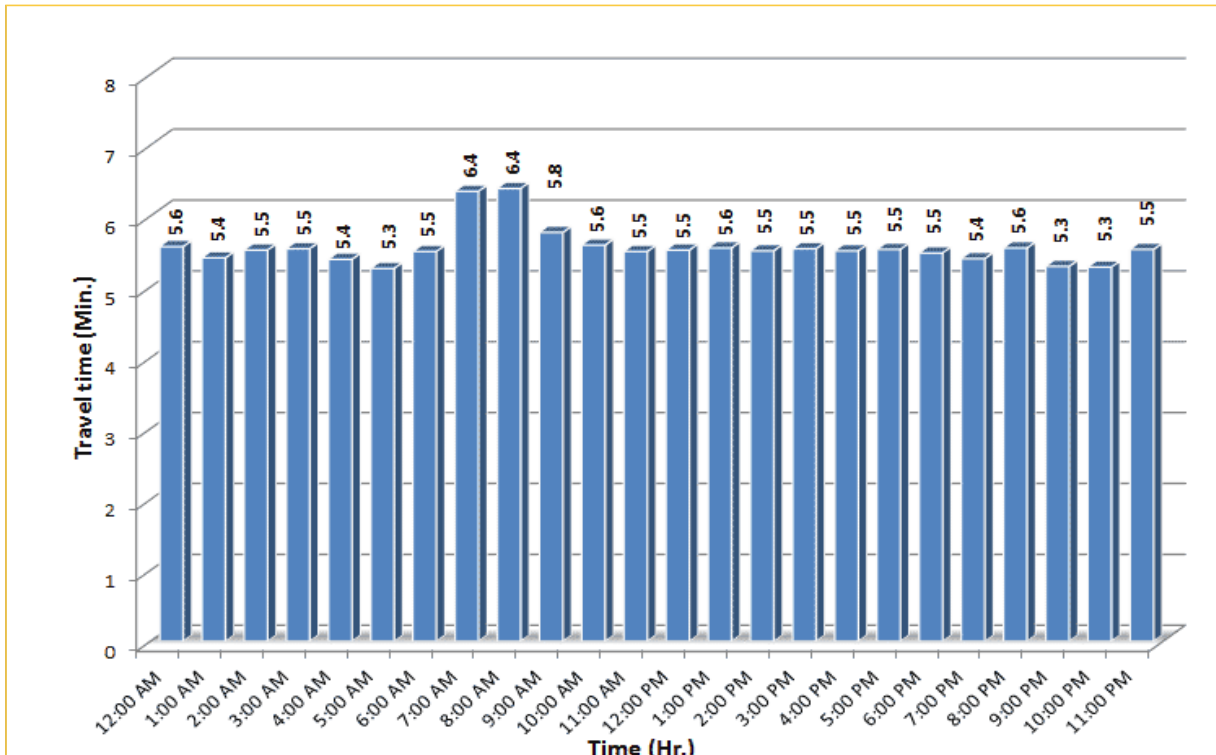
# TRAVEL TIME RELIABILITY REPORT

## Weekdays Travel Times by Time of Day\*

**I-75 Northbound: 5.4 Miles**  
 From: West of SR 826  
 To: North of Florida's Turnpike



**I-75 Southbound: 5.4 Miles**  
 From: North of Florida's Turnpike  
 To: West of SR 826

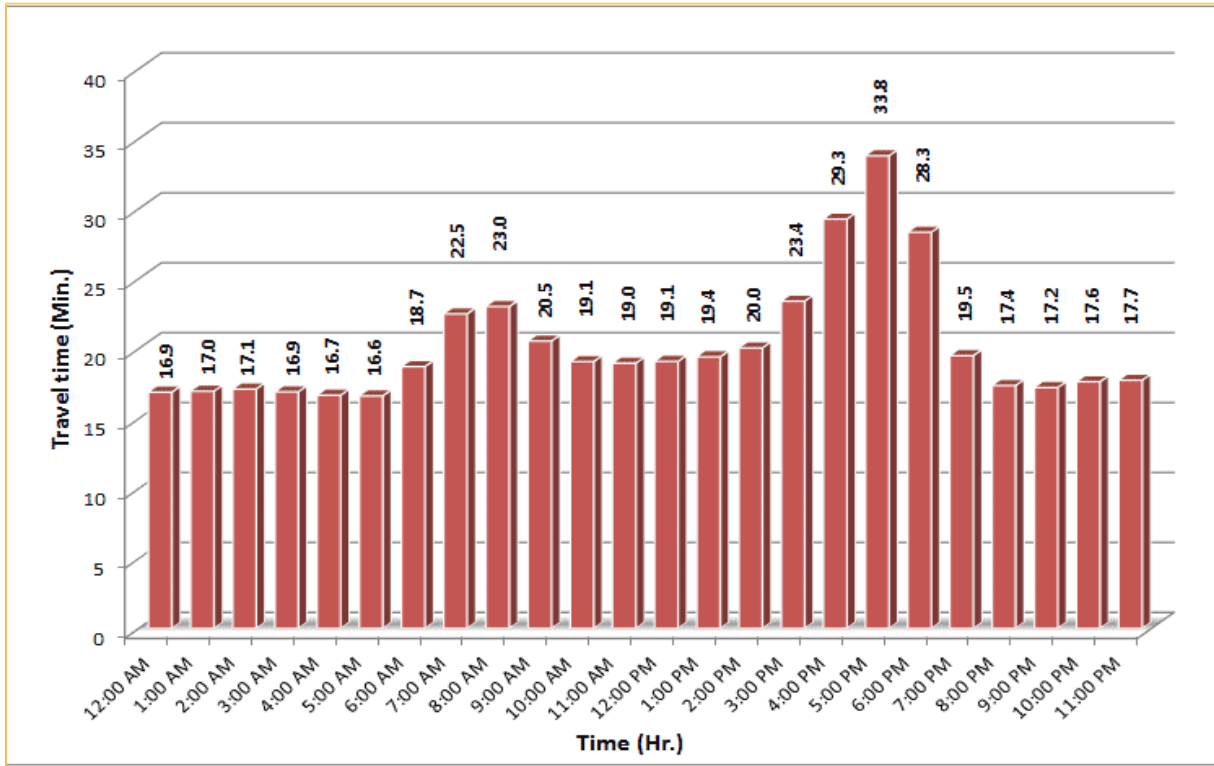


\* Twelve-month average from September 1<sup>st</sup>, 2017 to August 31<sup>st</sup>, 2018.


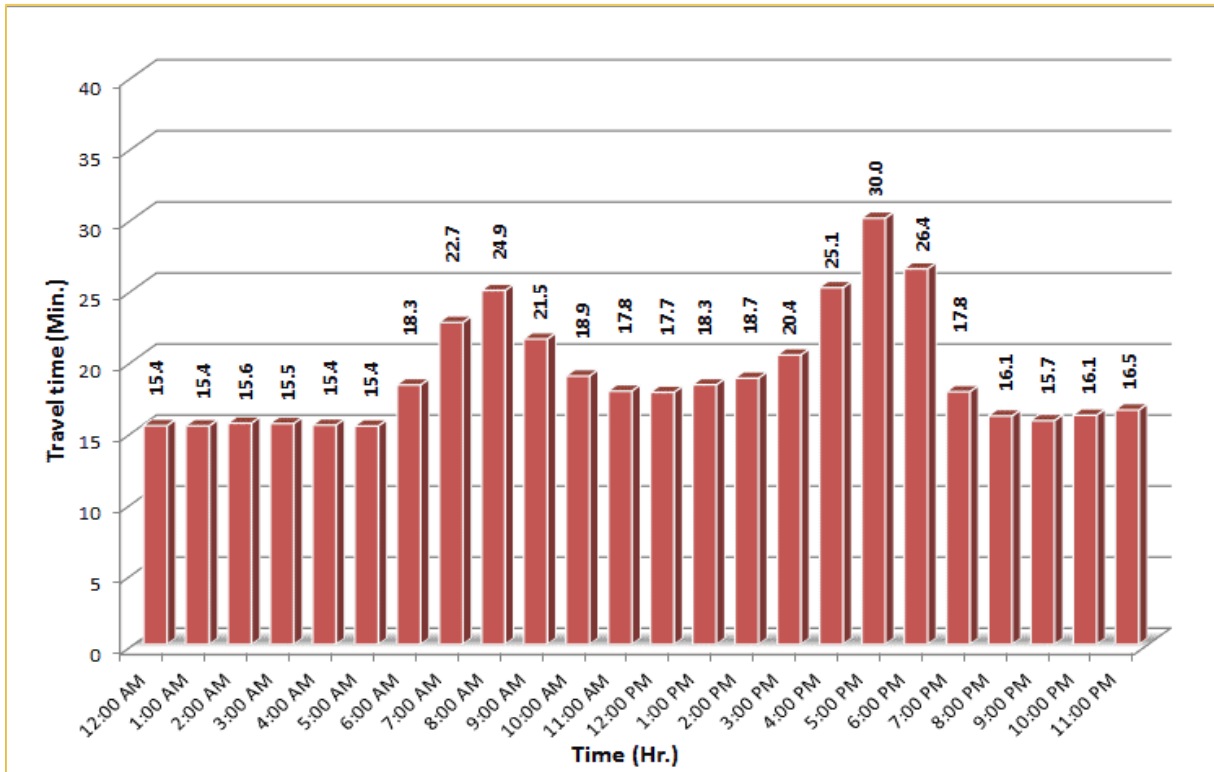
## TRAVEL TIME RELIABILITY REPORT

### Weekdays Travel Times by Time of Day\*\*\*

**SR 826 Northbound: 16.6 Miles**  
 From: US-1  
 To: North of NW 154 Street

**SR 826 Southbound: 16.6 Miles**  
 From: North of NW 154 Street  
 To: US-1

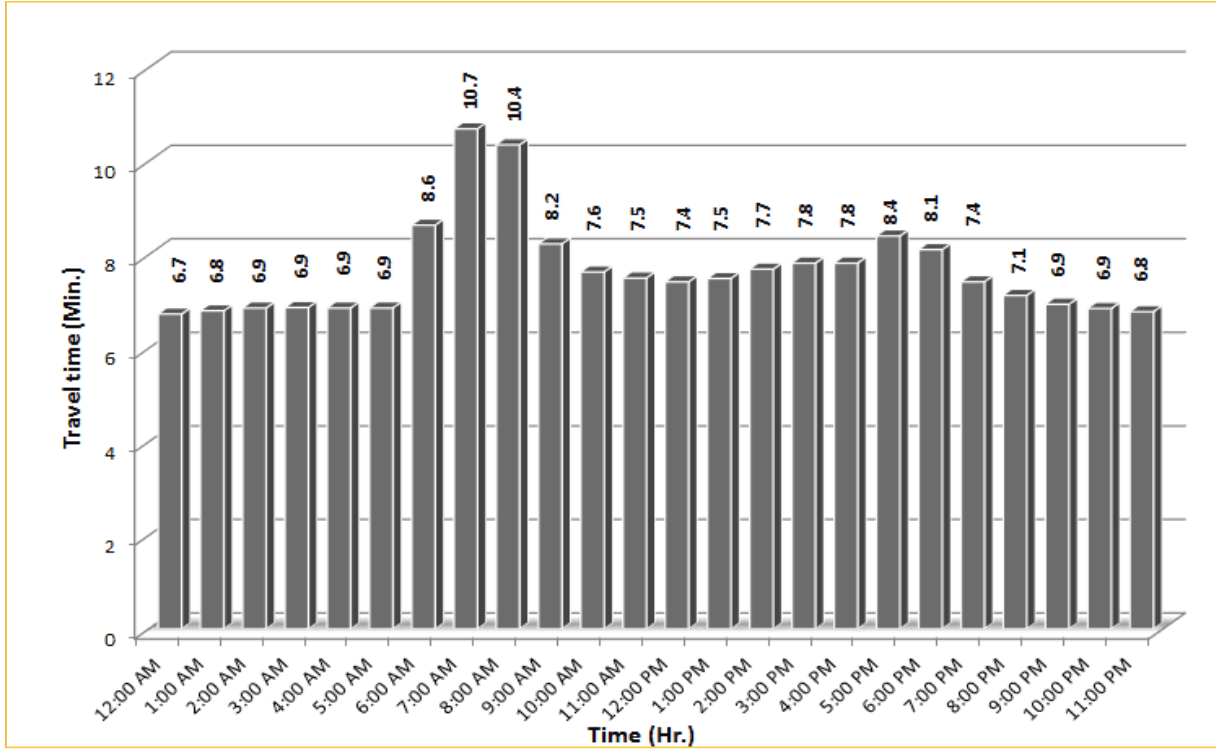



\*\*\* Five-month average from April 1<sup>st</sup>, 2018 to August 31<sup>st</sup>, 2018.

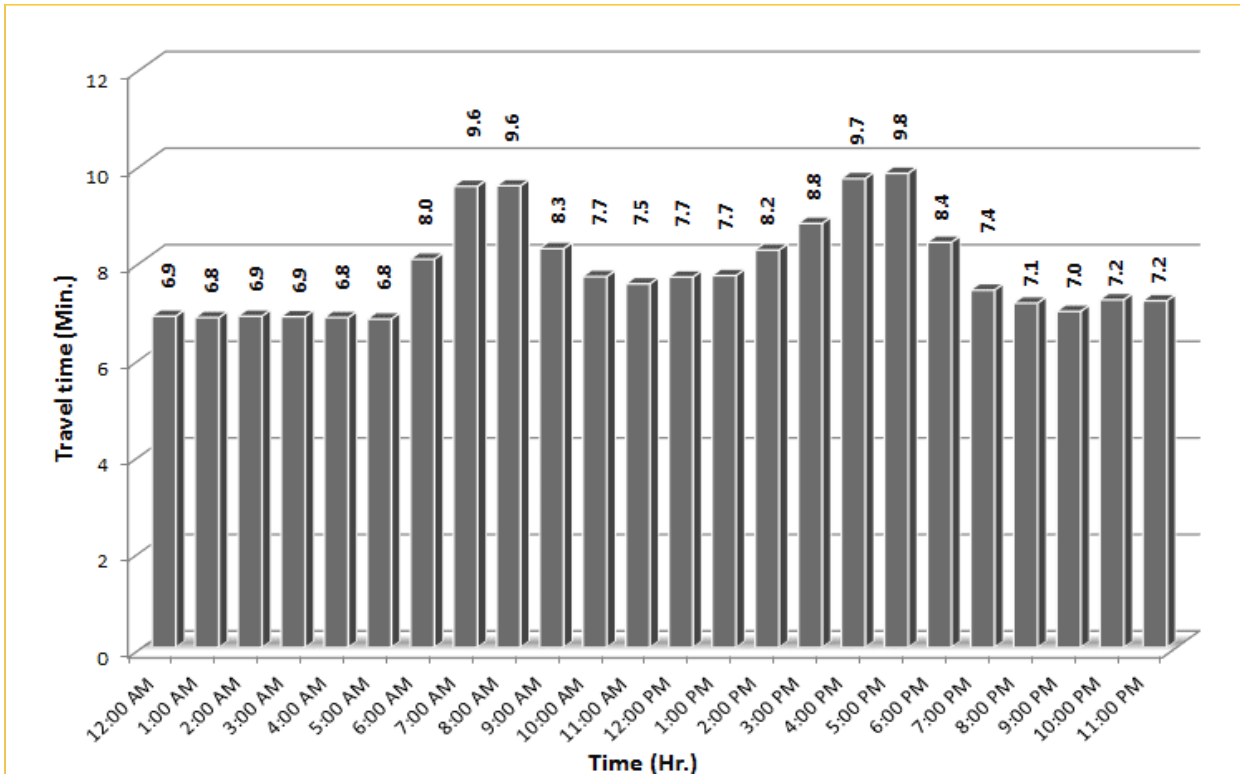
## TRAVEL TIME RELIABILITY REPORT

### Weekdays Travel Times by Time of Day\*

**SR 826 Eastbound: 7.1 Miles**  
 From: West of NW 67 Avenue  
 To: I-95



**SR 826 Westbound: 7.1 Miles**  
 From: I-95  
 To: West of NW 67 Avenue

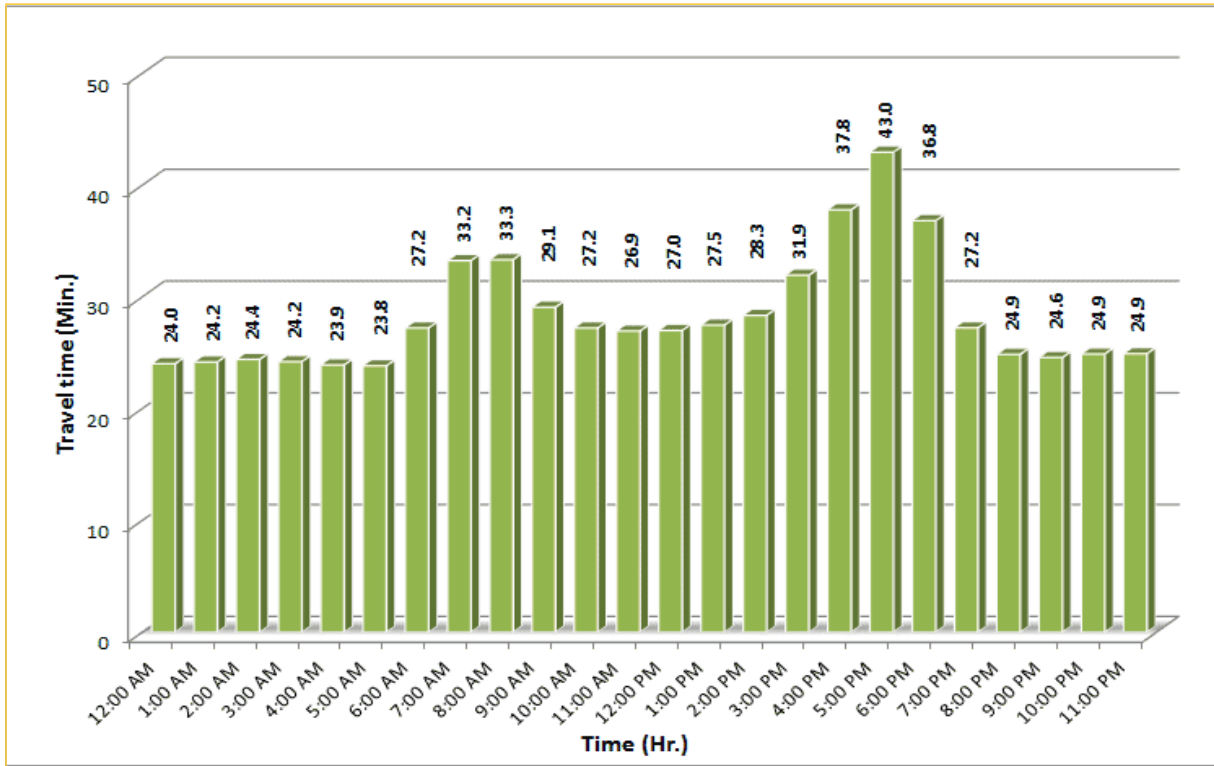


\* Twelve-month average from September 1<sup>st</sup>, 2017 to August 31<sup>st</sup>, 2018.

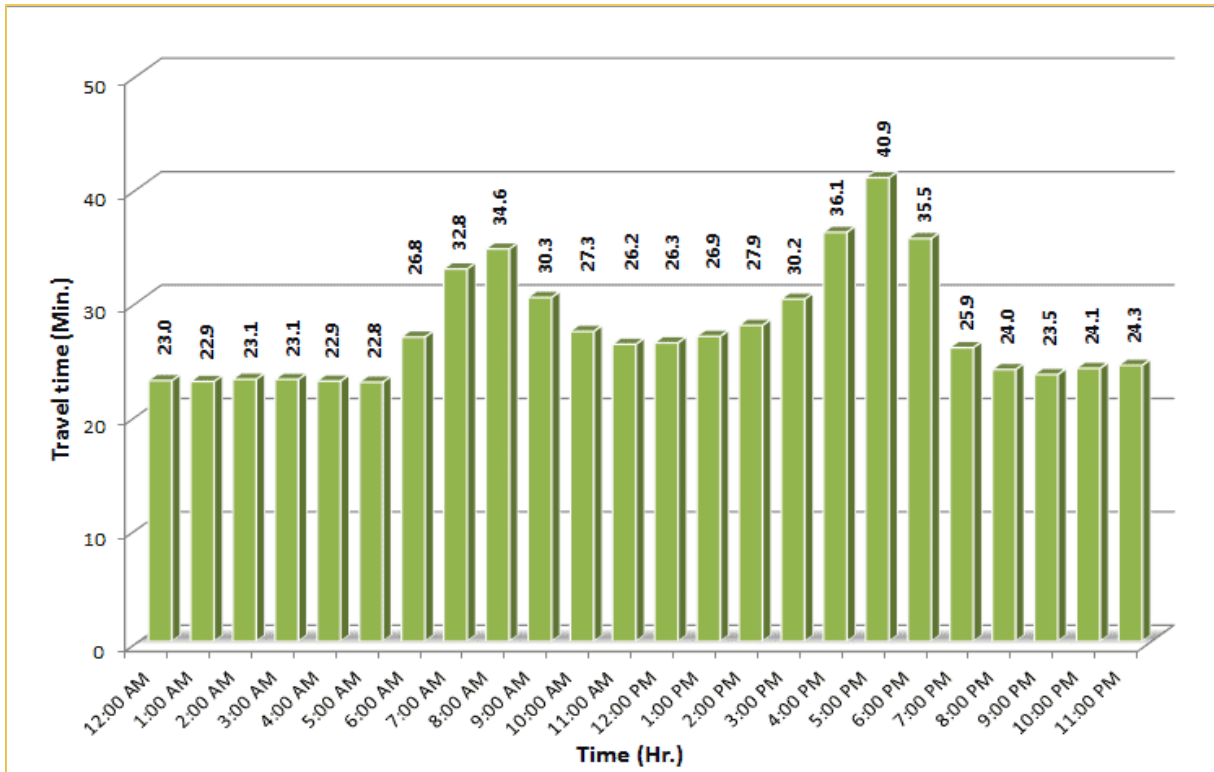
# TRAVEL TIME RELIABILITY REPORT

## Weekdays Travel Times by Time of Day\*\*\*

**SR 826 Northbound/Eastbound : 24.2 Miles**  
 From: US-1  
 To: I-95

**SR 826 Southbound/Westbound: 24.2 Miles**  
 From: I-95  
 To: US-1

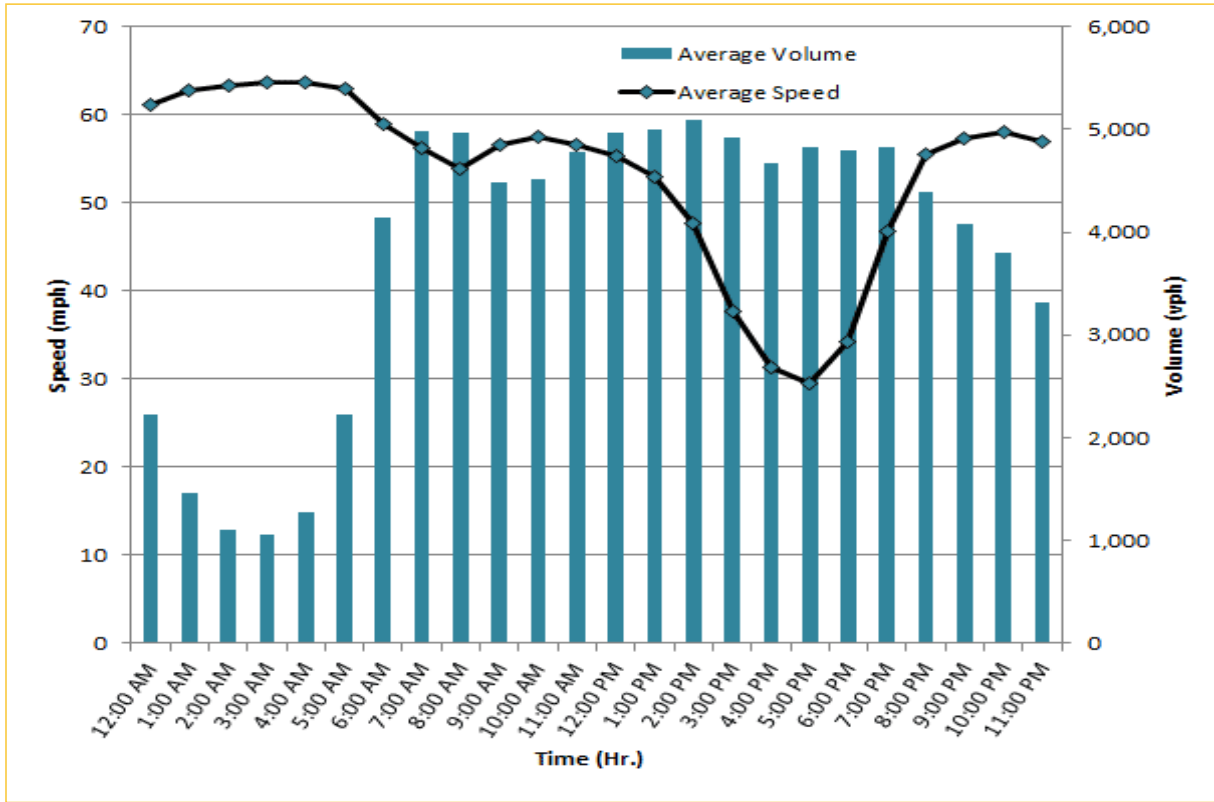



\*\*\* Five-month average from April 1<sup>st</sup>, 2018 to August 31<sup>st</sup>, 2018.

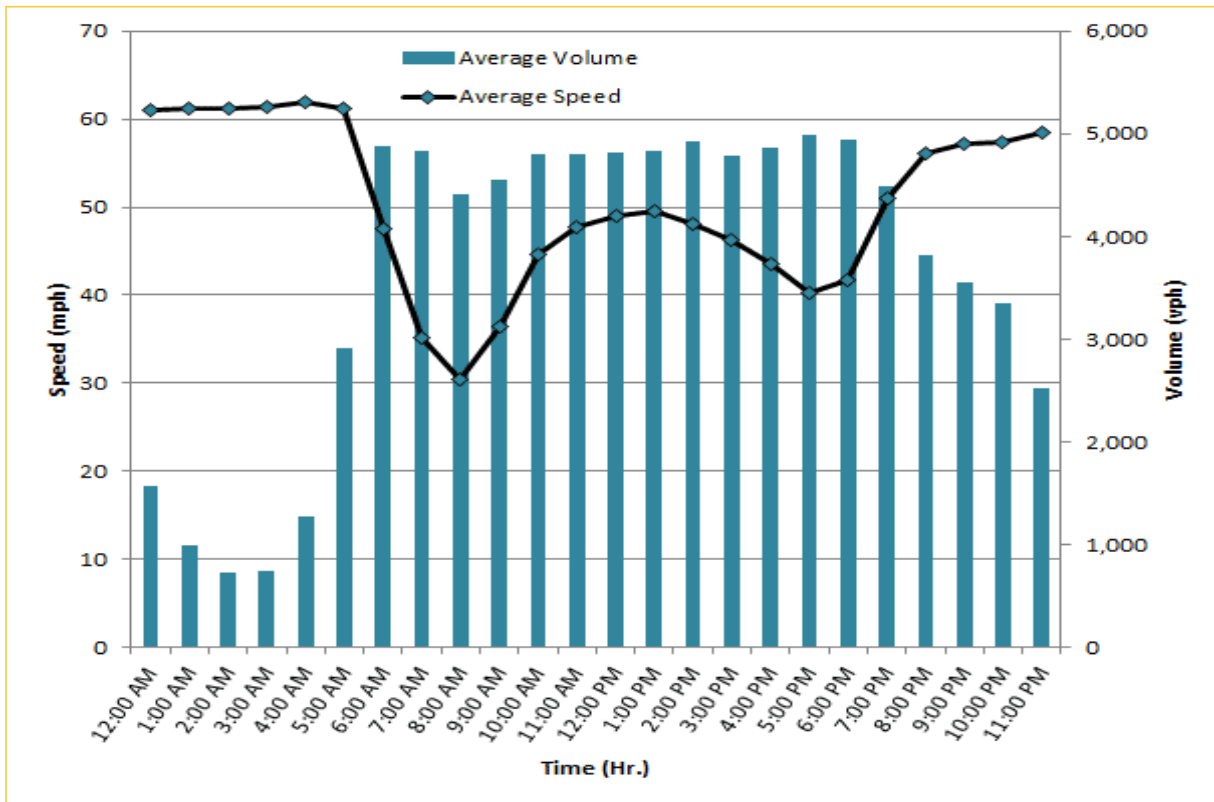
## TRAVEL TIME RELIABILITY REPORT

### Weekdays Speeds and Volumes by Time of Day\*

**I-95 Northbound: 17.3 Miles**  
 From: US-1  
 To: Miami-Dade / Broward County Line



**I-95 Southbound: 17.3 Miles**  
 From: Miami-Dade / Broward County Line  
 To: US-1



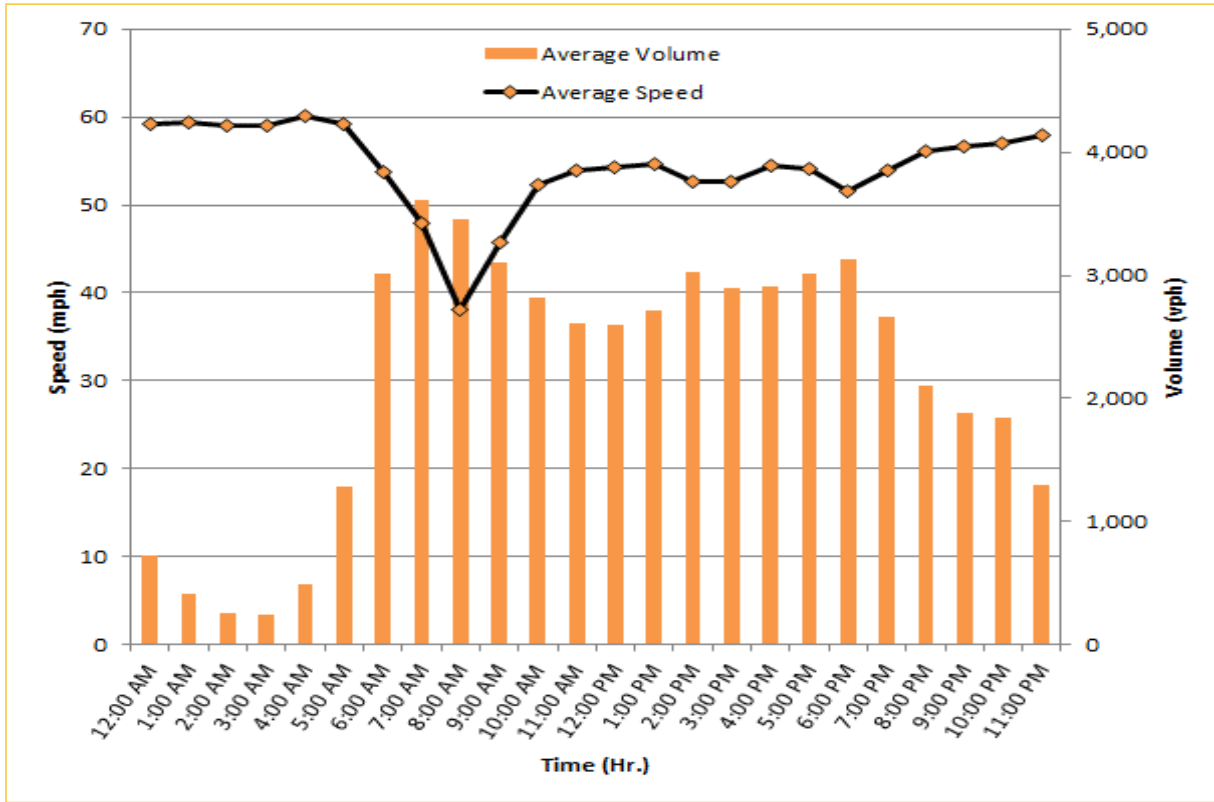
\* Twelve-month average from September 1<sup>st</sup>, 2017 to August 31<sup>st</sup>, 2018. Excludes express lanes.



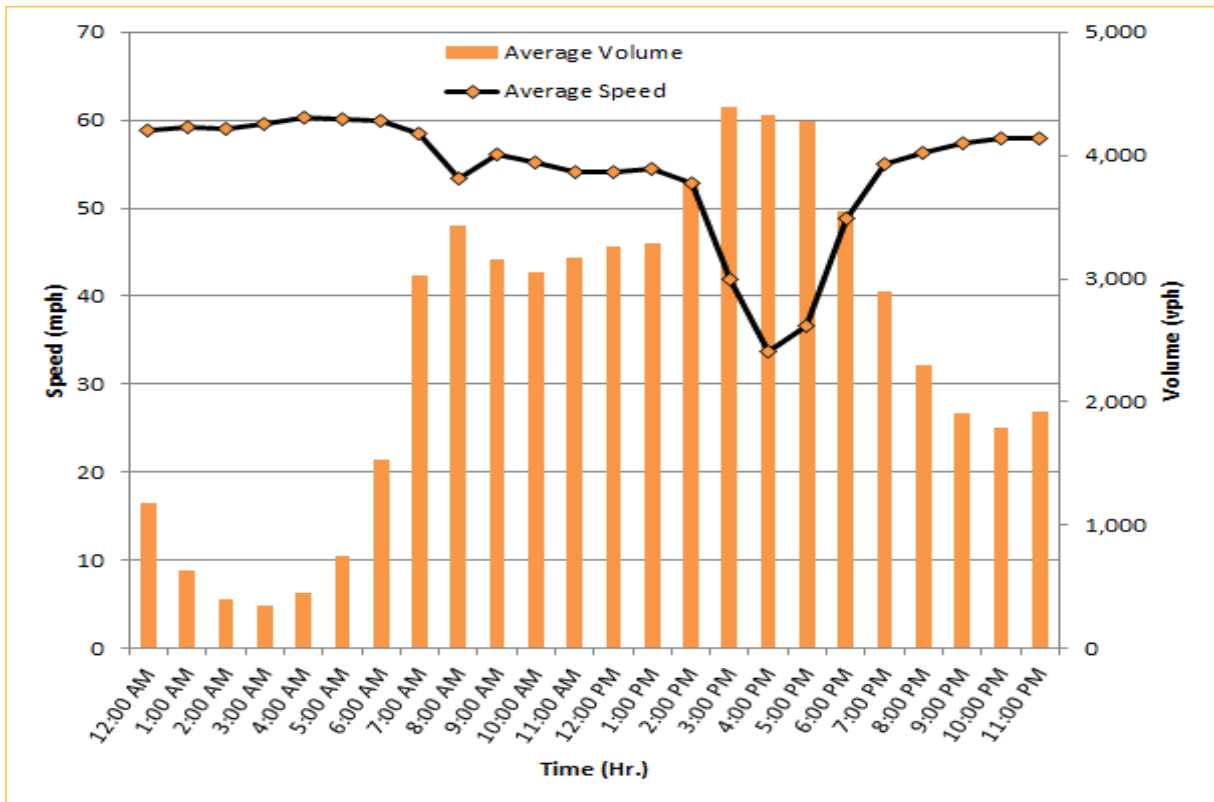
## TRAVEL TIME RELIABILITY REPORT

### Weekdays Speeds and Volumes by Time of Day\*

**I-195 Eastbound: 4.9 Miles**  
 From: West of North Miami Avenue  
 To: West of Alton Road



**I-195 Westbound: 4.9 Miles**  
 From: West of Alton Road  
 To: West of North Miami Avenue

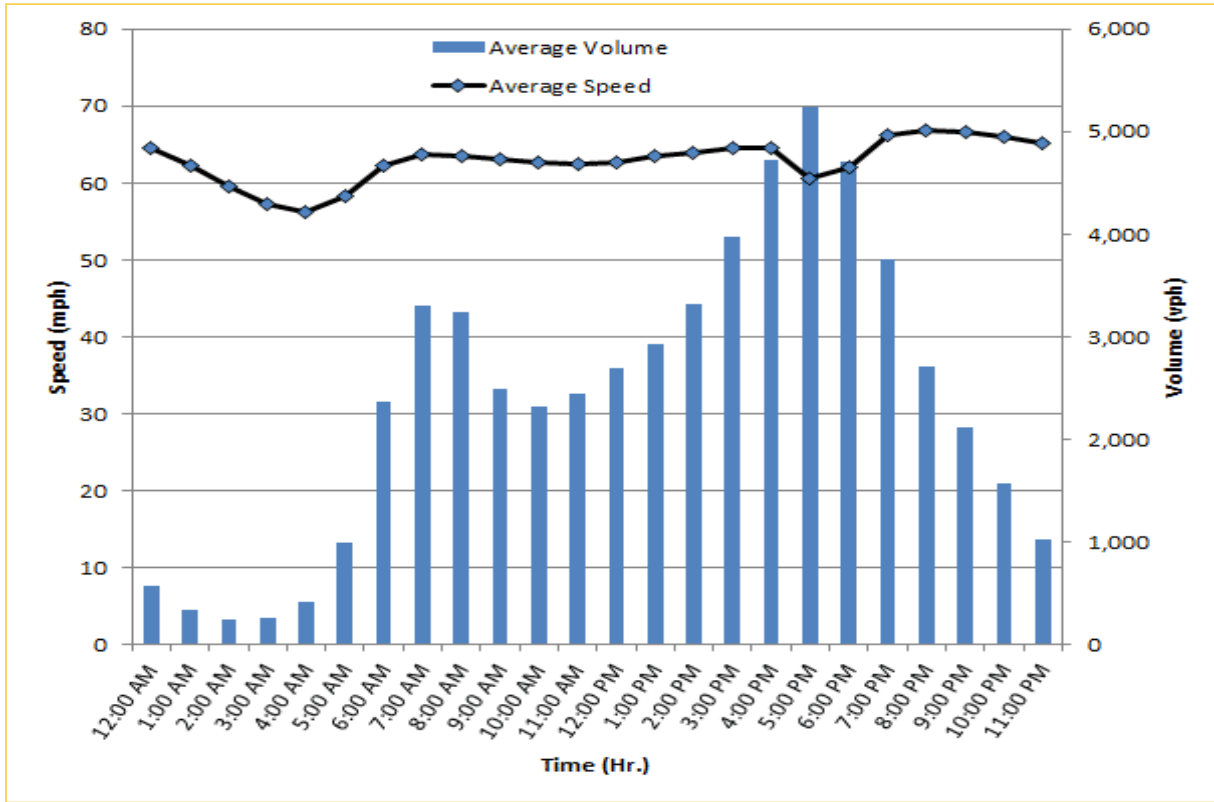


\* Twelve-month average from September 1<sup>st</sup>, 2017 to August 31<sup>st</sup>, 2018.

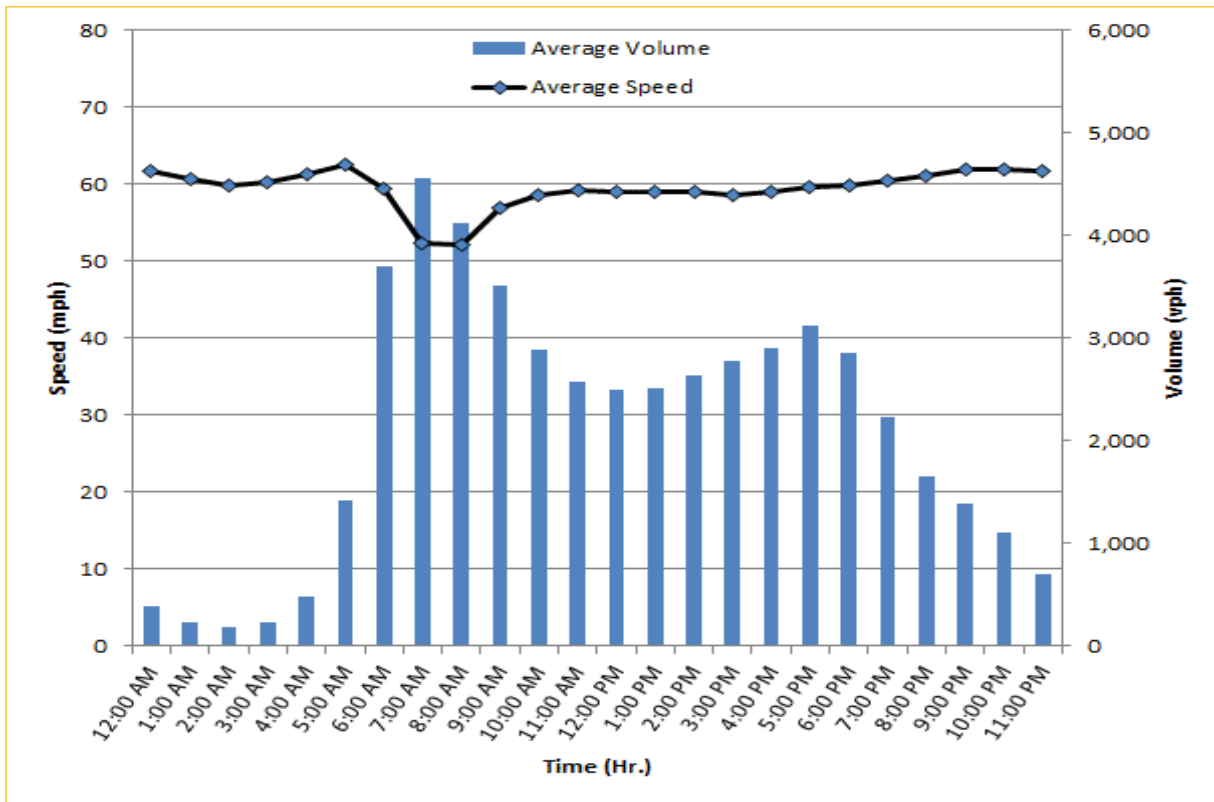
## TRAVEL TIME RELIABILITY REPORT

### Weekdays Speeds and Volumes by Time of Day\*

**I-75 Northbound: 5.4 Miles**  
 From: West of SR 826  
 To: North of Florida's Turnpike



**I-75 Southbound: 5.4 Miles**  
 From: North of Florida's Turnpike  
 To: West of SR 826

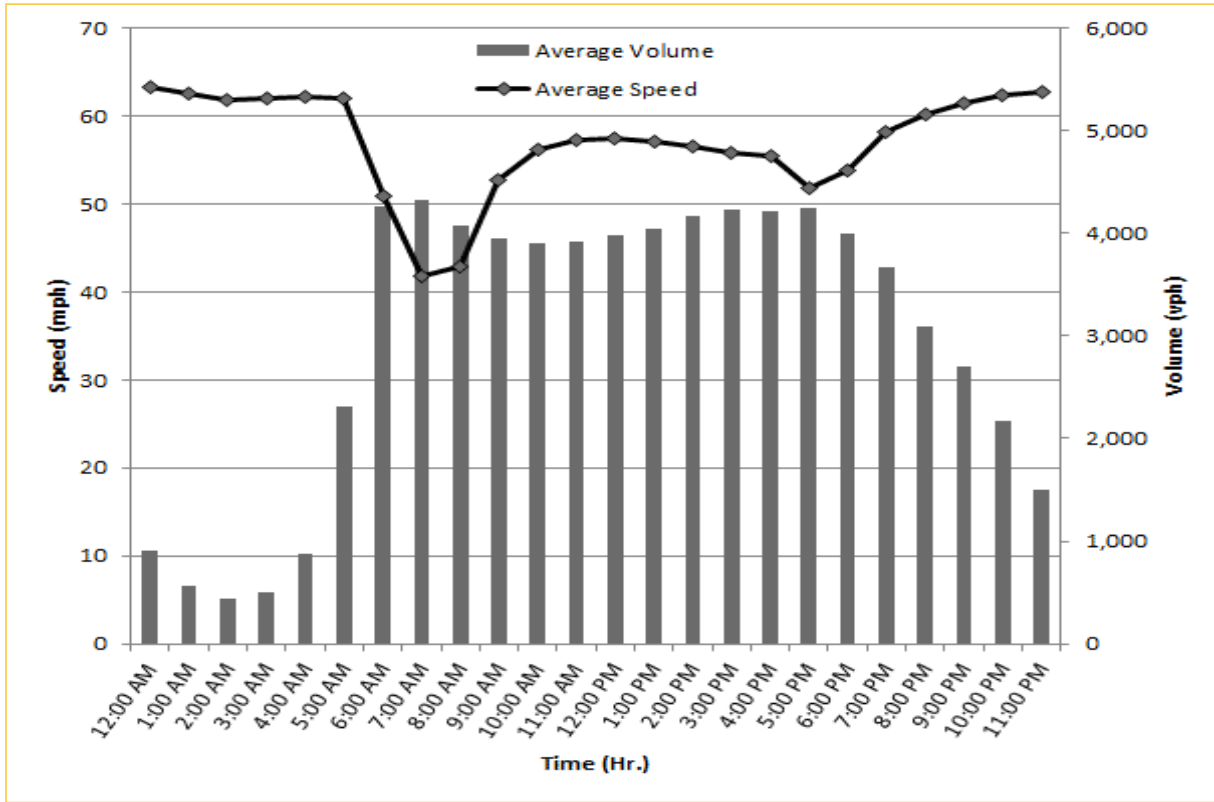


\* Twelve-month average from September 1<sup>st</sup>, 2017 to August 31<sup>st</sup>, 2018.

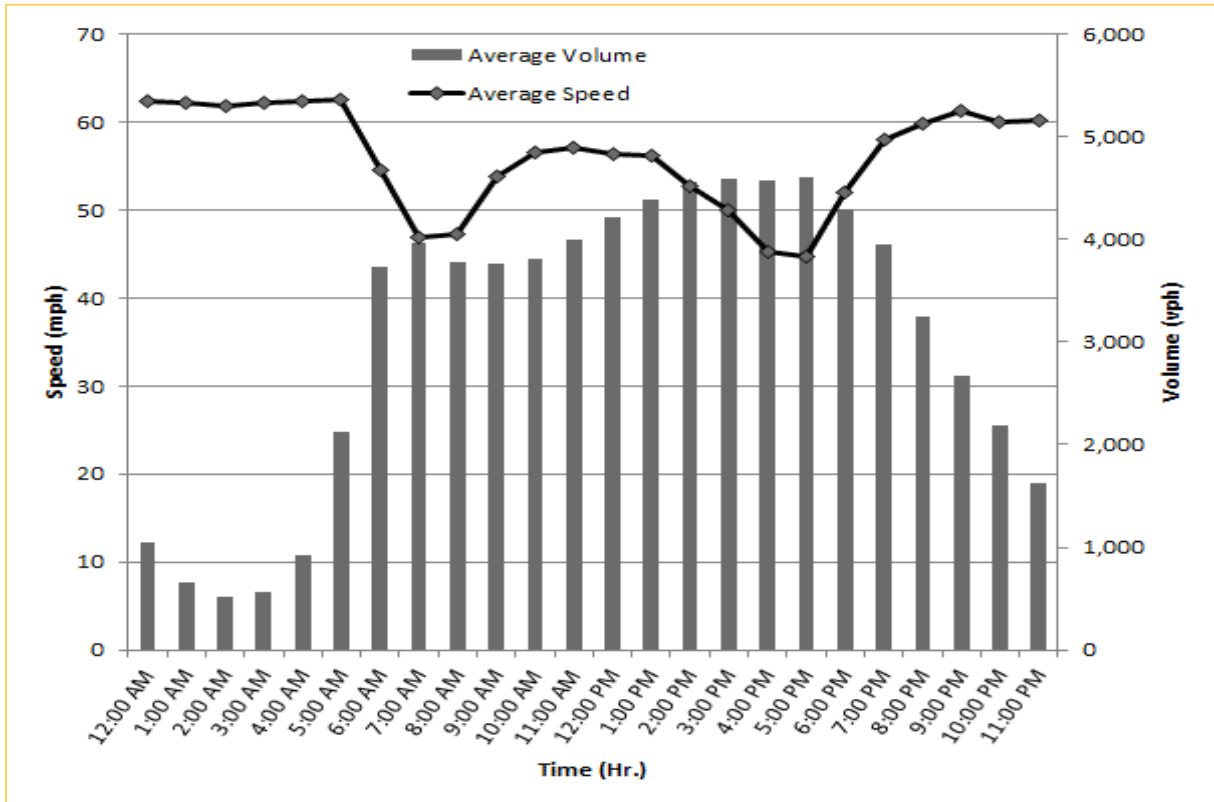
## TRAVEL TIME RELIABILITY REPORT

### Weekdays Speeds and Volumes by Time of Day\*

**SR 826 Eastbound: 7.1 Miles**  
 From: West of NW 67 Avenue  
 To: I-95



**SR 826 Westbound: 7.1 Miles**  
 From: I-95  
 To: West of NW 67 Avenue



\* Twelve-month average from September 1<sup>st</sup>, 2017 to August 31<sup>st</sup>, 2018.