

TRAVEL TIME RELIABILITY REPORT

Travel Time Index by Roadway*

Time	I-95		I-195		I-75		SR 826					
	NB	SB	EB	WB	NB	SB	NB***	EB	NE***	SB***	WB	SW***
0:00	1.06	1.06	0.99	1.01	1.04	1.06	1.05	1.00	1.02	1.00	0.98	0.99
1:00	1.03	1.06	0.98	1.01	1.07	1.07	1.05	1.00	1.03	1.00	0.98	0.99
2:00	1.02	1.06	0.99	1.01	1.13	1.08	1.06	1.02	1.04	1.01	0.98	1.00
3:00	1.01	1.06	0.99	1.00	1.17	1.09	1.05	1.02	1.03	1.01	0.98	1.00
4:00	1.01	1.05	0.98	0.99	1.19	1.06	1.03	1.01	1.02	1.01	0.98	0.99
5:00	1.02	1.06	0.98	0.99	1.14	1.03	1.03	1.02	1.01	1.01	0.98	0.99
6:00	1.11	1.46	1.09	0.99	1.07	1.08	1.16	1.27	1.15	1.20	1.15	1.16
7:00	1.18	2.14	1.26	1.02	1.05	1.26	1.39	1.58	1.41	1.49	1.36	1.43
8:00	1.24	2.52	1.65	1.13	1.05	1.27	1.41	1.53	1.41	1.62	1.37	1.50
9:00	1.15	1.94	1.36	1.07	1.05	1.14	1.26	1.22	1.23	1.42	1.18	1.32
10:00	1.13	1.51	1.16	1.08	1.06	1.09	1.17	1.12	1.15	1.25	1.10	1.19
11:00	1.14	1.40	1.11	1.10	1.06	1.08	1.17	1.11	1.14	1.18	1.08	1.14
12:00	1.17	1.35	1.09	1.10	1.05	1.08	1.18	1.09	1.14	1.16	1.10	1.14
13:00	1.25	1.32	1.09	1.10	1.04	1.09	1.20	1.11	1.17	1.20	1.11	1.17
14:00	1.39	1.36	1.15	1.14	1.04	1.09	1.23	1.14	1.20	1.24	1.18	1.22
15:00	1.81	1.41	1.15	1.51	1.03	1.10	1.44	1.15	1.35	1.36	1.27	1.33
16:00	2.17	1.52	1.10	1.87	1.05	1.09	1.79	1.15	1.59	1.67	1.38	1.57
17:00	2.32	1.63	1.11	1.72	1.15	1.09	2.06	1.24	1.80	1.99	1.40	1.78
18:00	2.02	1.59	1.19	1.27	1.12	1.08	1.71	1.20	1.53	1.75	1.20	1.55
19:00	1.46	1.30	1.12	1.08	1.02	1.06	1.20	1.10	1.15	1.17	1.06	1.13
20:00	1.18	1.17	1.06	1.06	0.99	1.05	1.07	1.05	1.05	1.05	1.02	1.04
21:00	1.13	1.14	1.05	1.04	1.00	1.04	1.07	1.03	1.04	1.03	1.00	1.02
22:00	1.12	1.14	1.04	1.03	1.01	1.04	1.10	1.01	1.06	1.06	1.03	1.04
23:00	1.17	1.11	1.01	1.03	1.04	1.05	1.09	1.00	1.06	1.07	1.02	1.04
FFS**	64 mph	64 mph	59 mph	60 mph	67 mph	65 mph	62 mph	63 mph	62 mph	64 mph	61 mph	63 mph

Maximum Travel Time Index.

Travel Time Index (TTI) is a measure of average conditions that indicates how much longer, **on average**, travel times are during congestion compared to during light traffic.

Real World Example: A TTI of 1.60 means that for a trip that usually takes 10 minutes in light traffic, a traveler should budget for an additional 6 minutes **on average**.

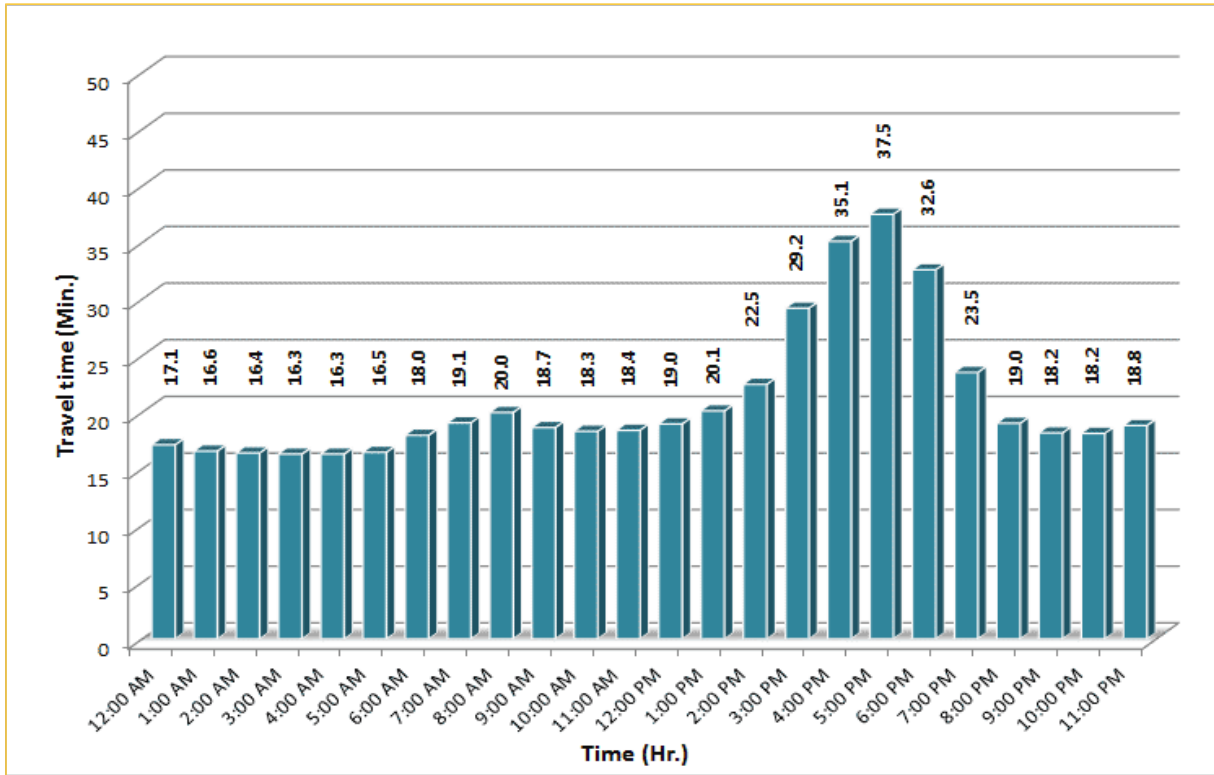


* Twelve-month average from August 1st, 2017 to July 31st, 2018.
 ** FFS: Free Flow Speed.
 *** Four-month average from April 1st, 2018 to July 31st, 2018.

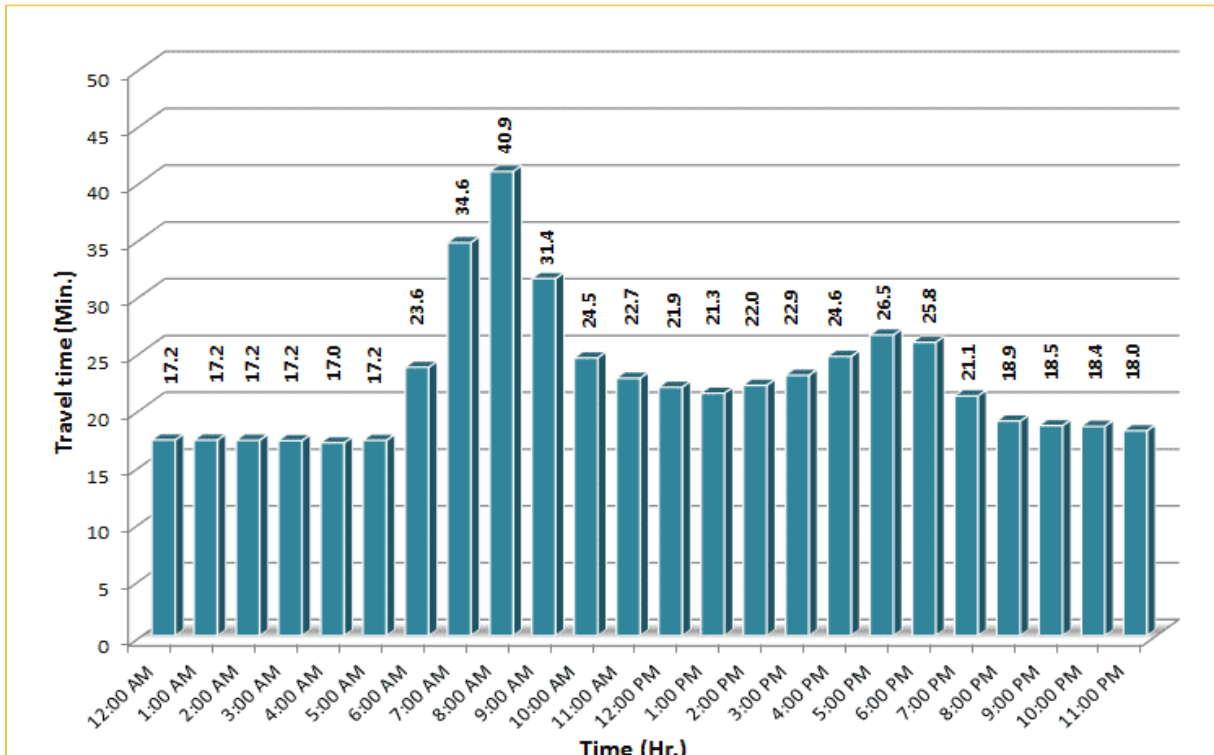
TRAVEL TIME RELIABILITY REPORT

Weekdays Travel Times by Time of Day*

I-95 Northbound: 17.3 Miles
 From: US-1
 To: Miami-Dade / Broward County Line

I-95 Southbound: 17.3 Miles
 From: Miami-Dade / Broward County Line
 To: US-1

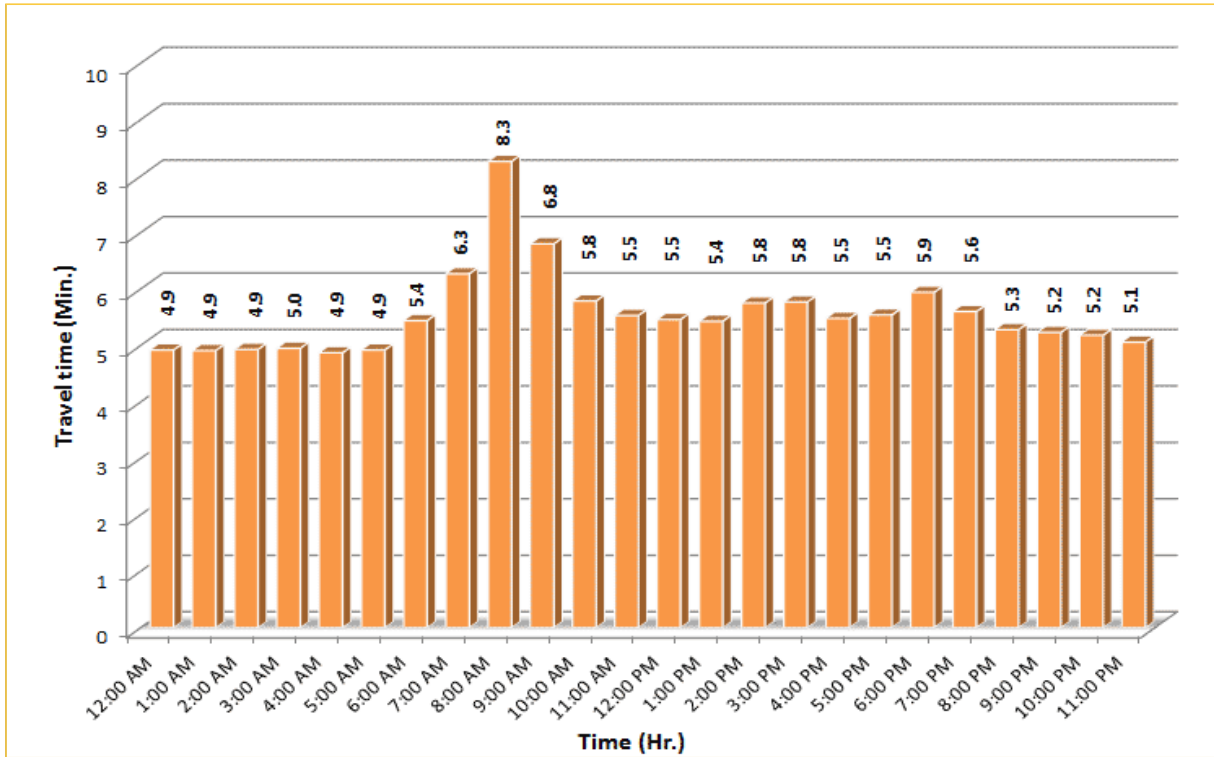



* Twelve-month average from August 1st, 2017 to July 31st, 2018. Excludes express lanes.

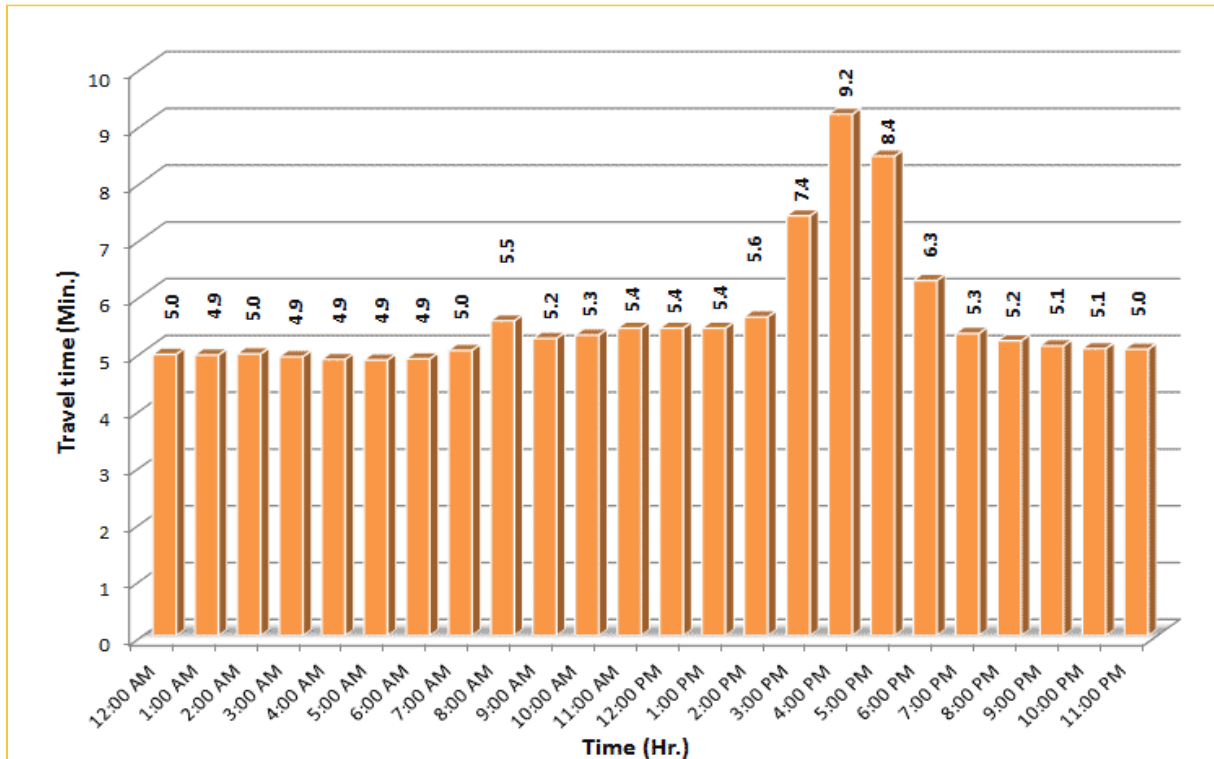
TRAVEL TIME RELIABILITY REPORT

Weekdays Travel Times by Time of Day*

I-195 Eastbound: 4.9 Miles
 From: West of North Miami Avenue
 To: West of Alton Road

I-195 Westbound: 4.9 Miles
 From: West of Alton Road
 To: West of North Miami Avenue


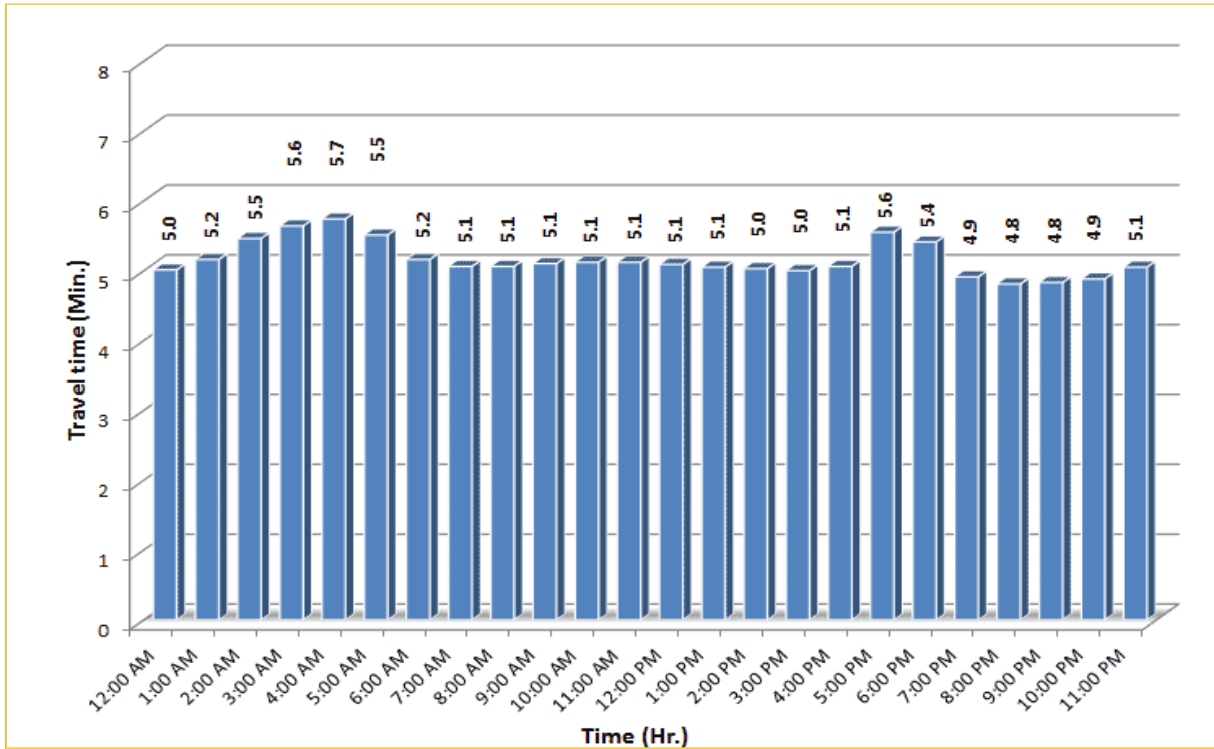



* Twelve-month average from August 1st, 2017 to July 31st, 2018.

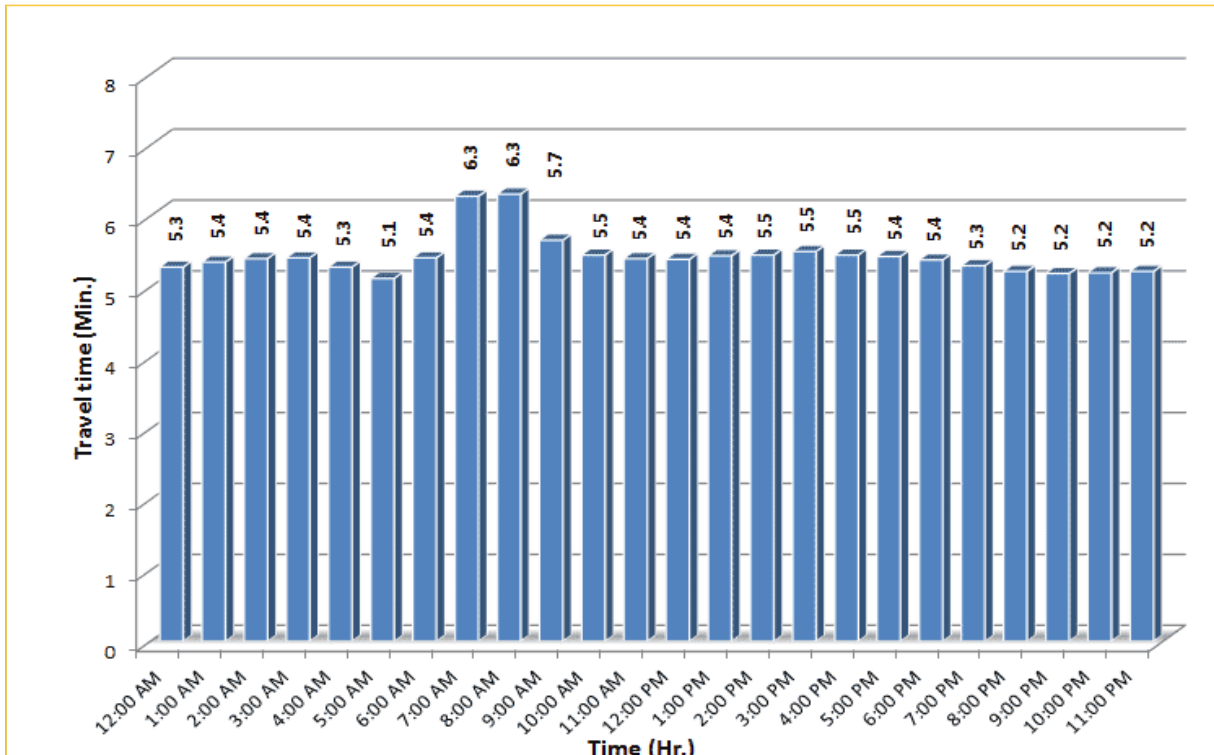
TRAVEL TIME RELIABILITY REPORT

Weekdays Travel Times by Time of Day*

I-75 Northbound: 5.4 Miles
 From: West of SR 826
 To: North of Florida's Turnpike

I-75 Southbound: 5.4 Miles
 From: North of Florida's Turnpike
 To: West of SR 826

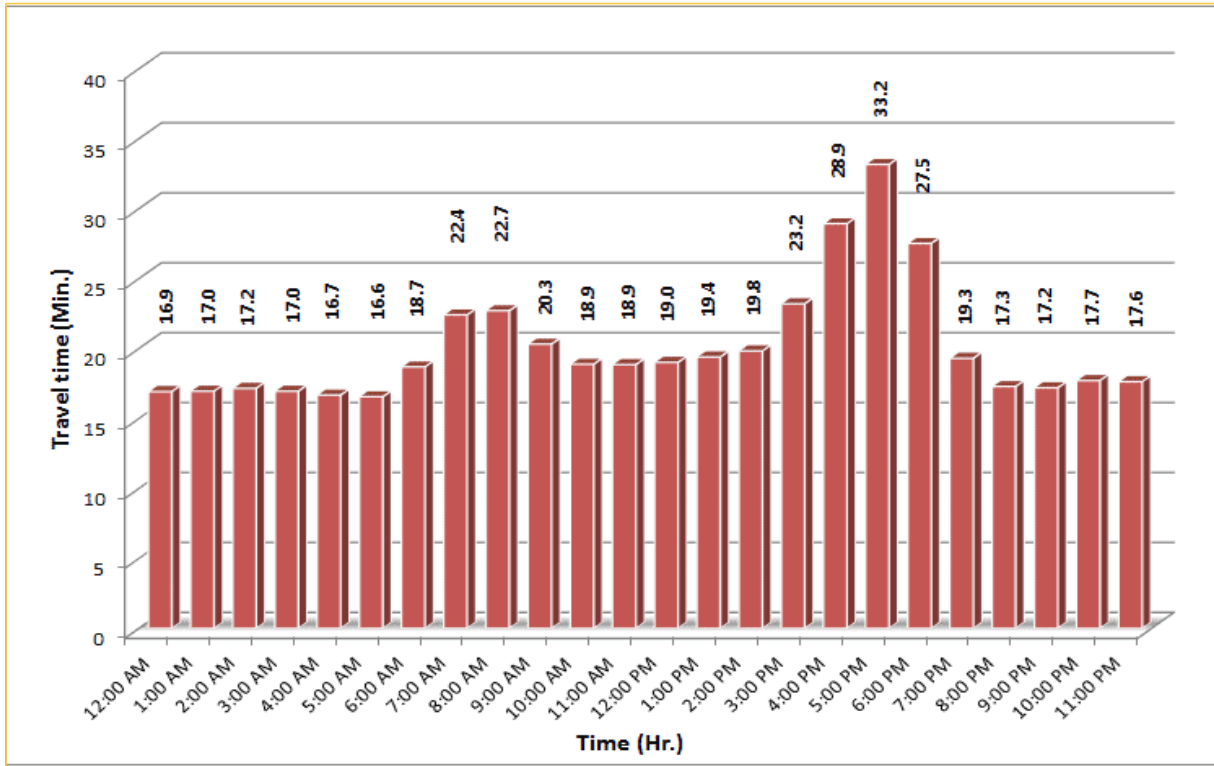



* Twelve-month average from August 1st, 2017 to July 31st, 2018.

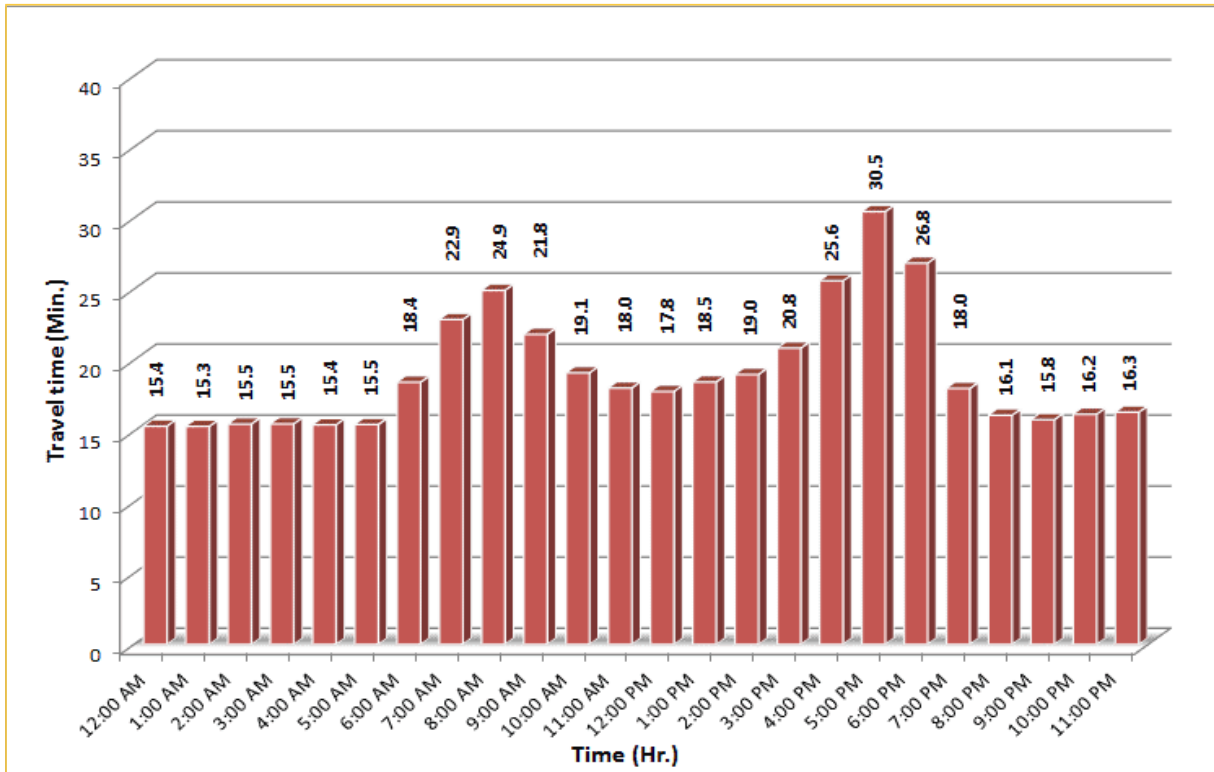
TRAVEL TIME RELIABILITY REPORT

Weekdays Travel Times by Time of Day***

SR 826 Northbound: 16.6 Miles
 From: US-1
 To: North of NW 154 Street

SR 826 Southbound: 16.6 Miles
 From: North of NW 154 Street
 To: US-1

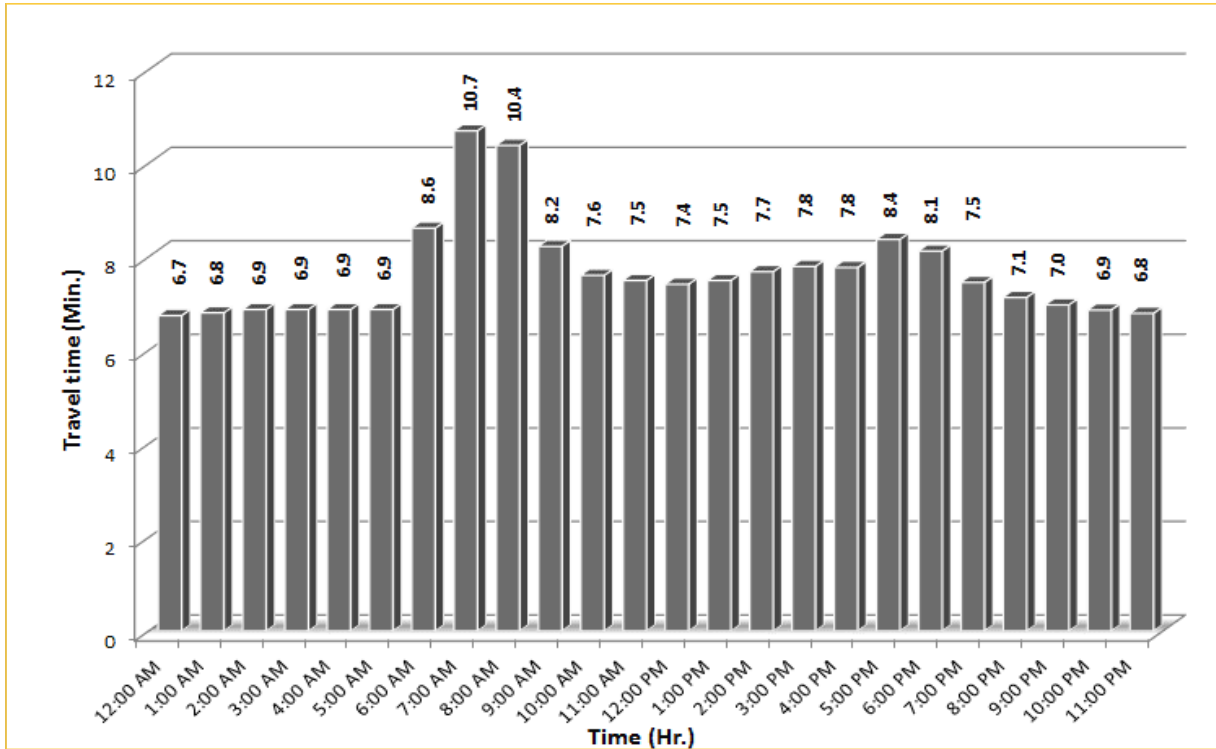



*** Four-month average from April 1st, 2018 to July 31st, 2018.

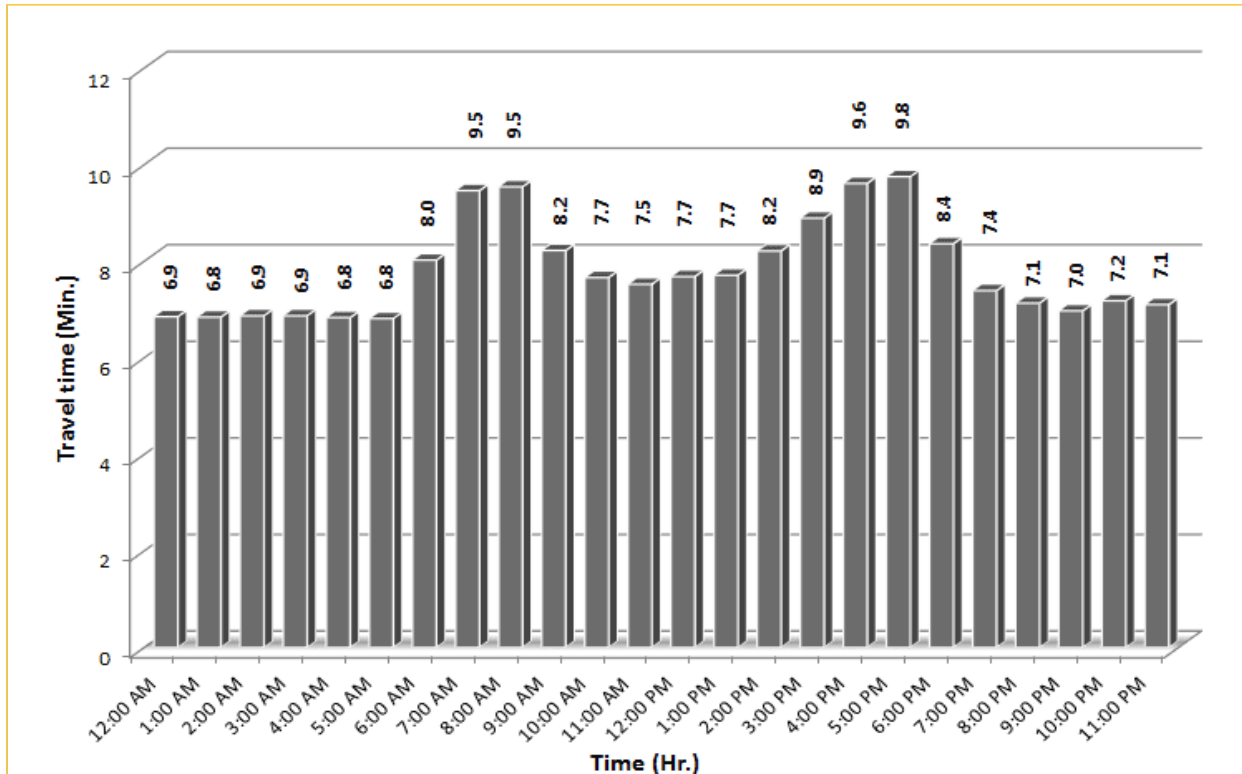
TRAVEL TIME RELIABILITY REPORT

Weekdays Travel Times by Time of Day*

SR 826 Eastbound: 7.1 Miles
 From: West of NW 67 Avenue
 To: I-95



SR 826 Westbound: 7.1 Miles
 From: I-95
 To: West of NW 67 Avenue

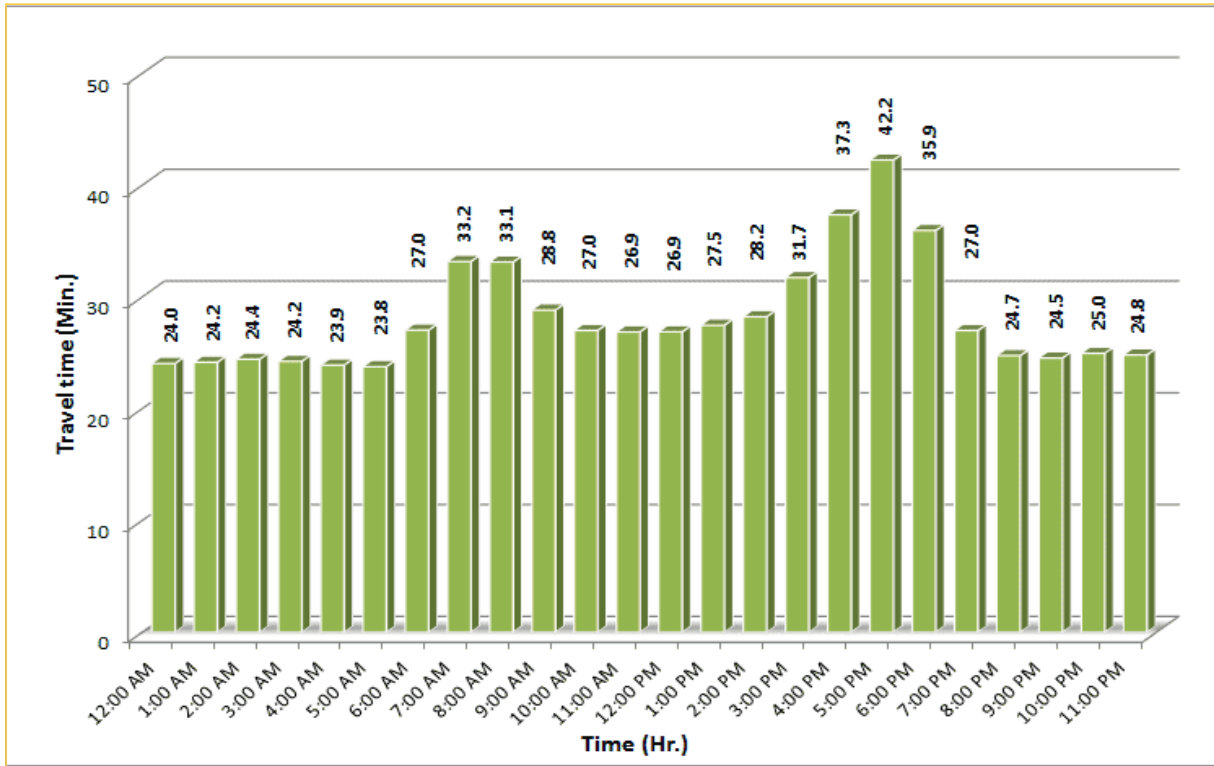


* Twelve-month average from August 1st, 2017 to July 31st, 2018.

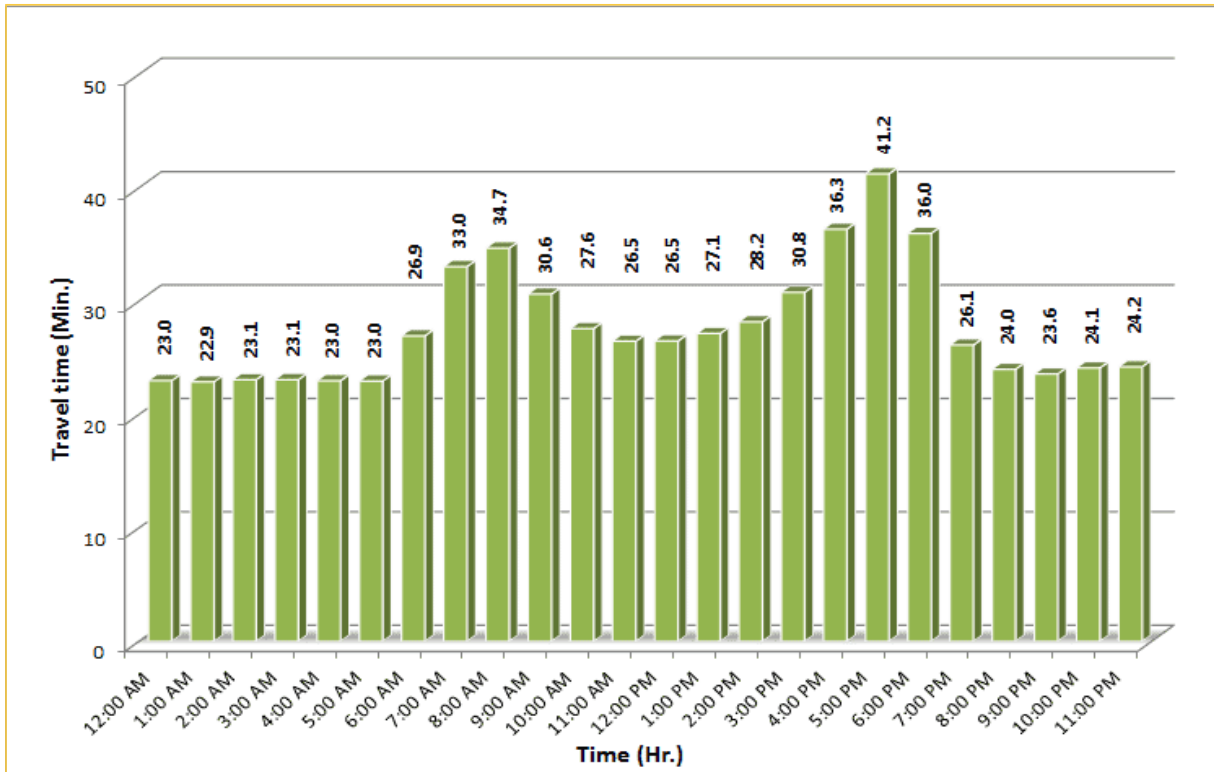
TRAVEL TIME RELIABILITY REPORT

Weekdays Travel Times by Time of Day***

SR 826 Northbound/Eastbound : 24.2 Miles
 From: US-1
 To: I-95



SR 826 Southbound/Westbound: 24.2 Miles
 From: I-95
 To: US-1

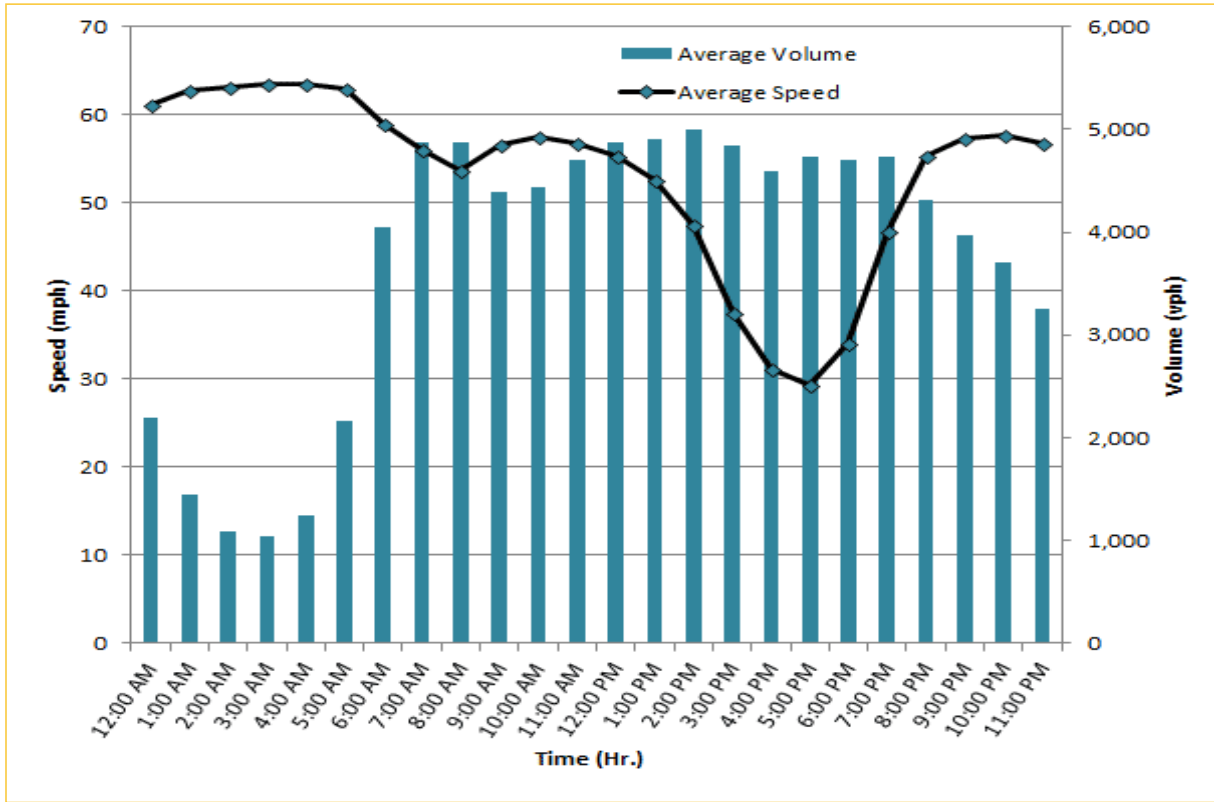


*** Four-month average from April 1st, 2018 to July 31st, 2018.

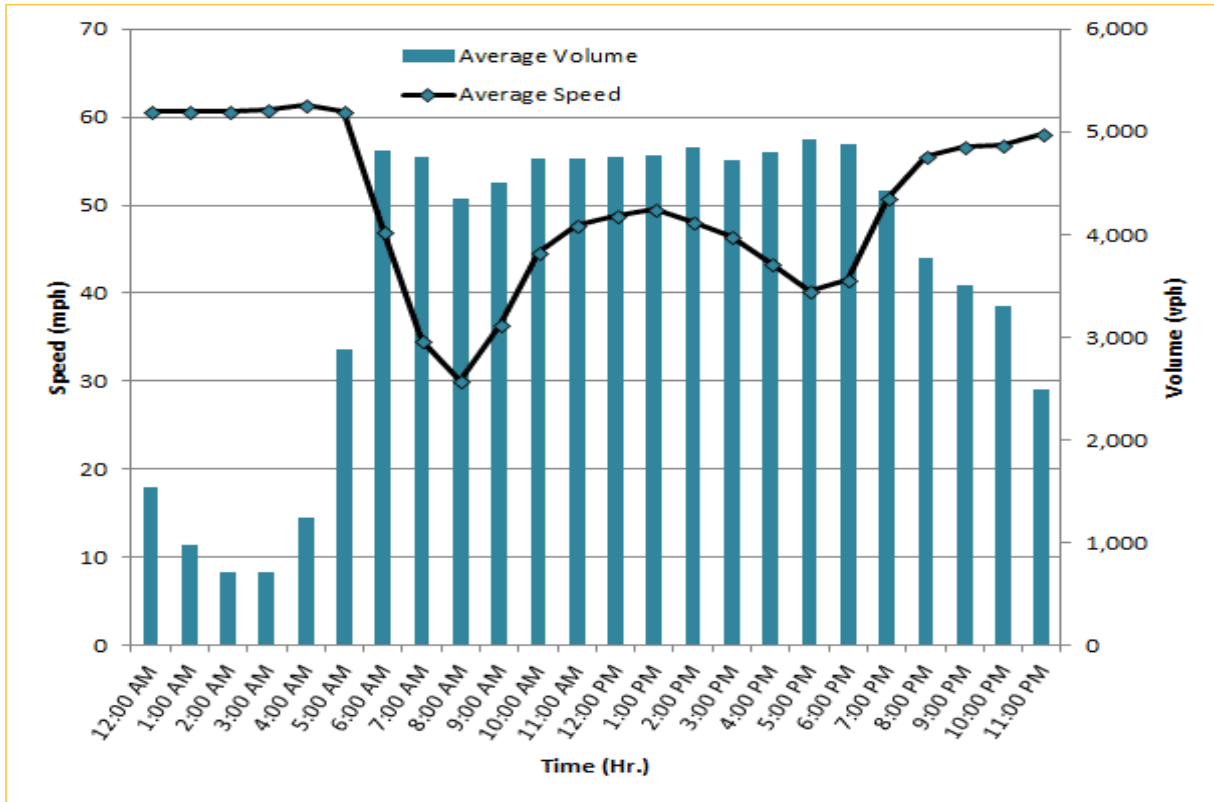
TRAVEL TIME RELIABILITY REPORT

Weekdays Speeds and Volumes by Time of Day*

I-95 Northbound: 17.3 Miles
 From: US-1
 To: Miami-Dade / Broward County Line



I-95 Southbound: 17.3 Miles
 From: Miami-Dade / Broward County Line
 To: US-1

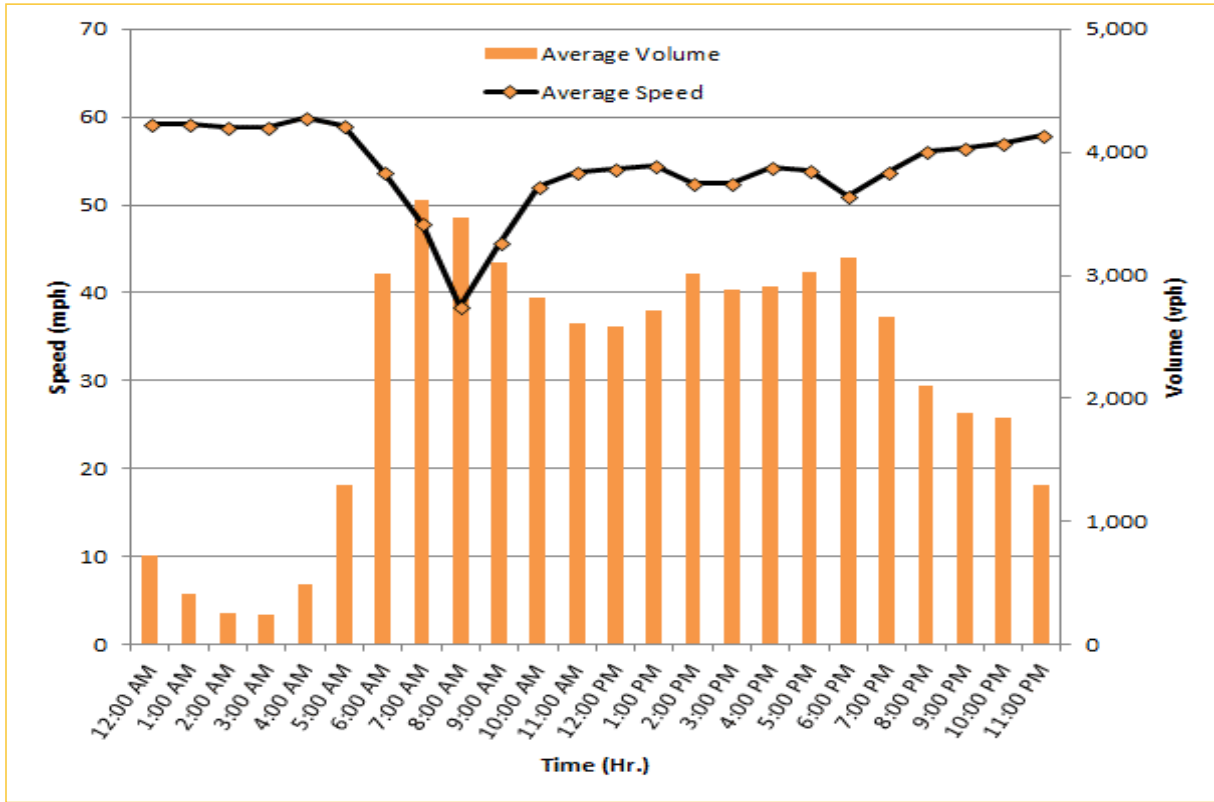


* Twelve-month average from August 1st, 2017 to July 31st, 2018. Excludes express lanes.

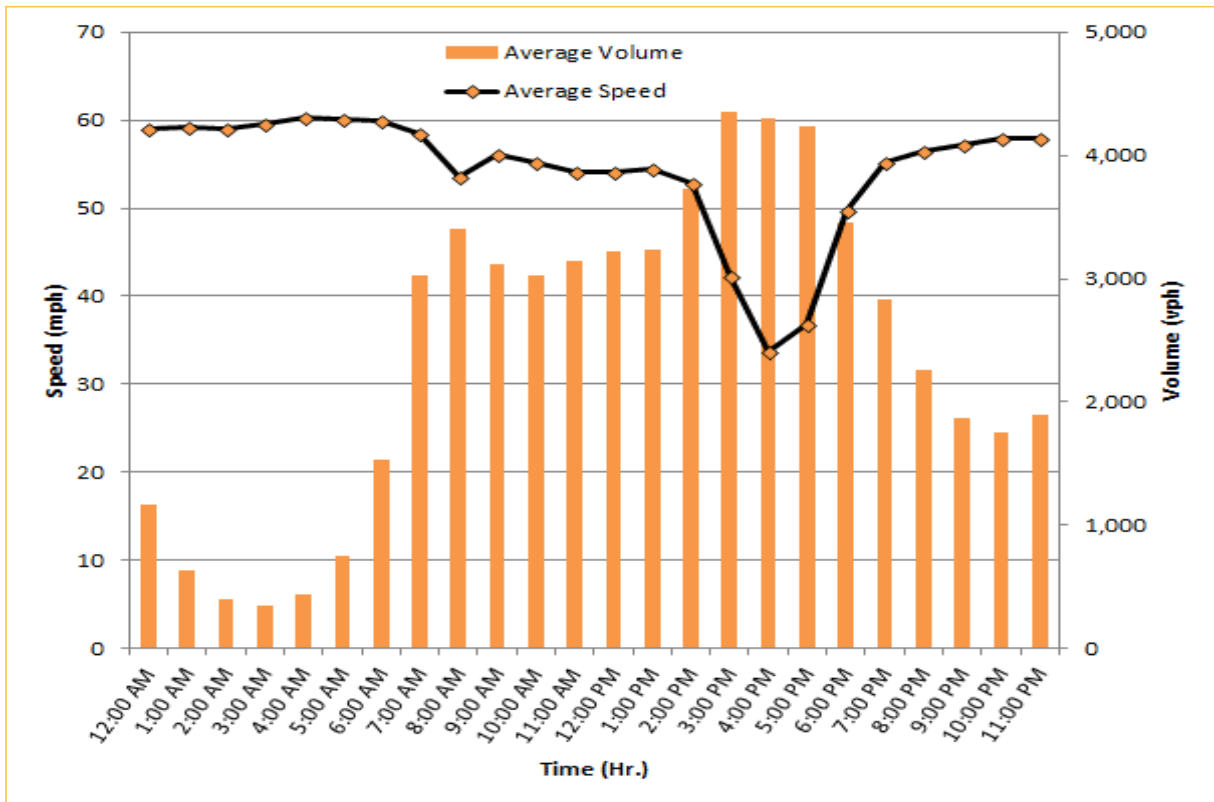
TRAVEL TIME RELIABILITY REPORT

Weekdays Speeds and Volumes by Time of Day*

I-195 Eastbound: 4.9 Miles
 From: West of North Miami Avenue
 To: West of Alton Road



I-195 Westbound: 4.9 Miles
 From: West of Alton Road
 To: West of North Miami Avenue

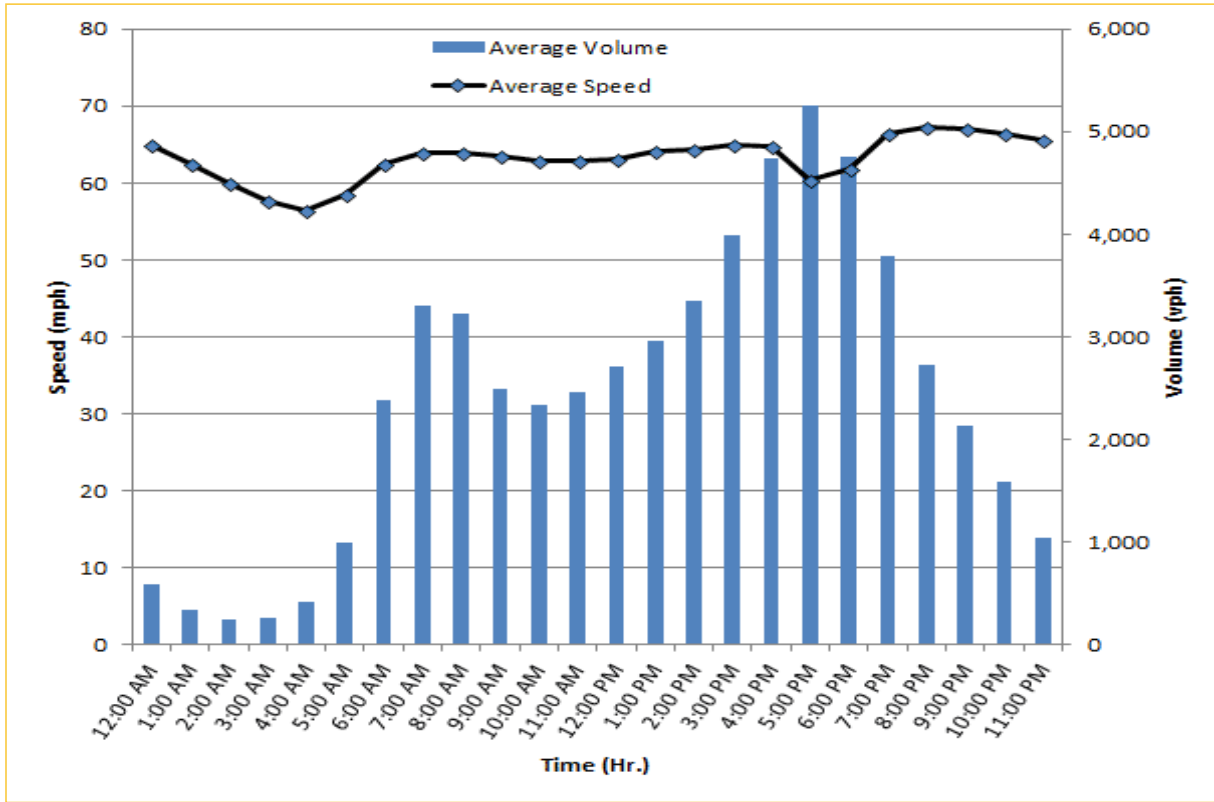


*Twelve-month average from August 1st, 2017 to July 31st, 2018.

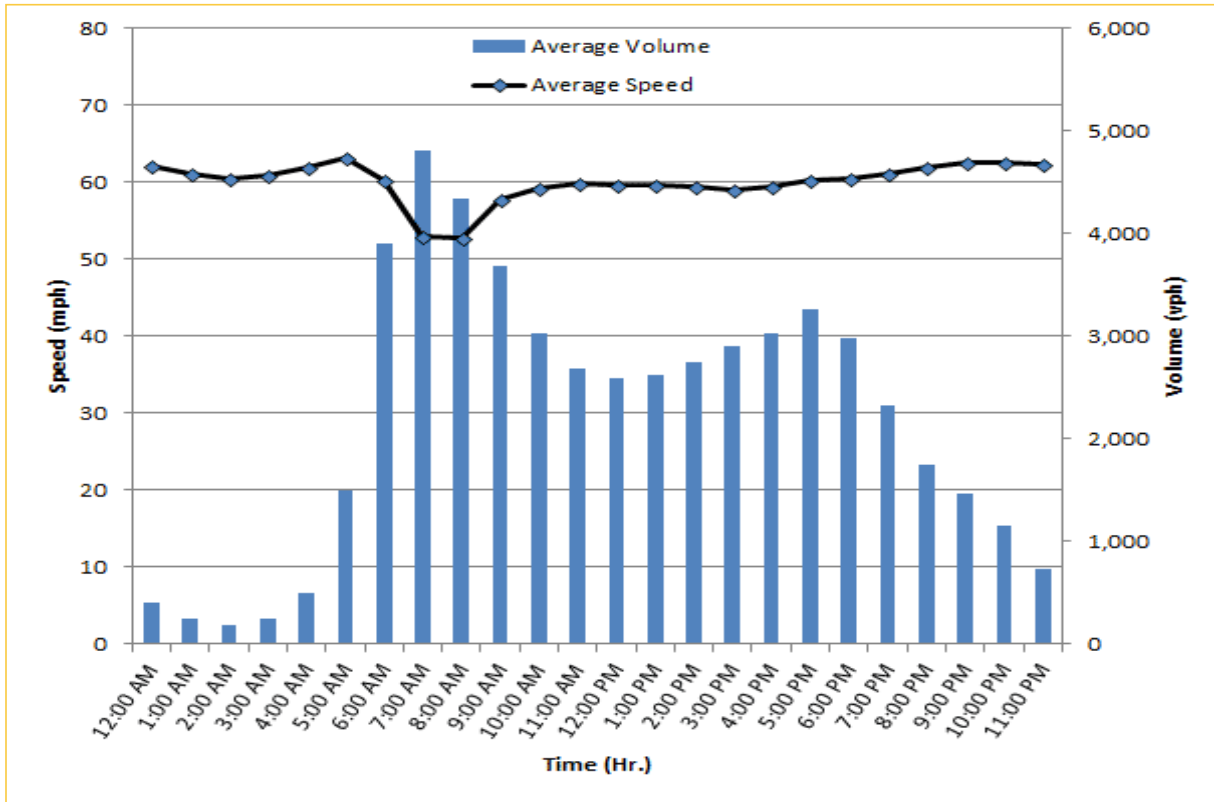
TRAVEL TIME RELIABILITY REPORT

Weekdays Speeds and Volumes by Time of Day*

I-75 Northbound: 5.4 Miles
 From: West of SR 826
 To: North of Florida's Turnpike



I-75 Southbound: 5.4 Miles
 From: North of Florida's Turnpike
 To: West of SR 826

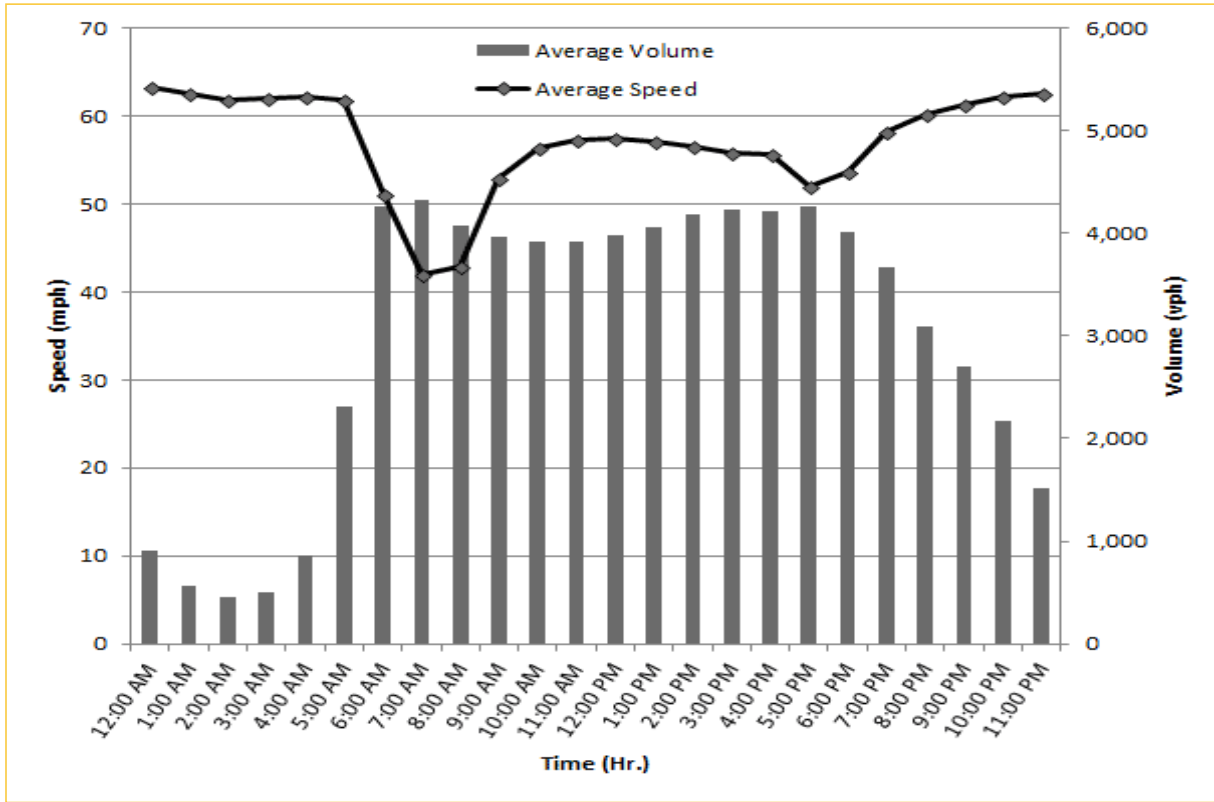


* Twelve-month average from August 1st, 2017 to July 31st, 2018.

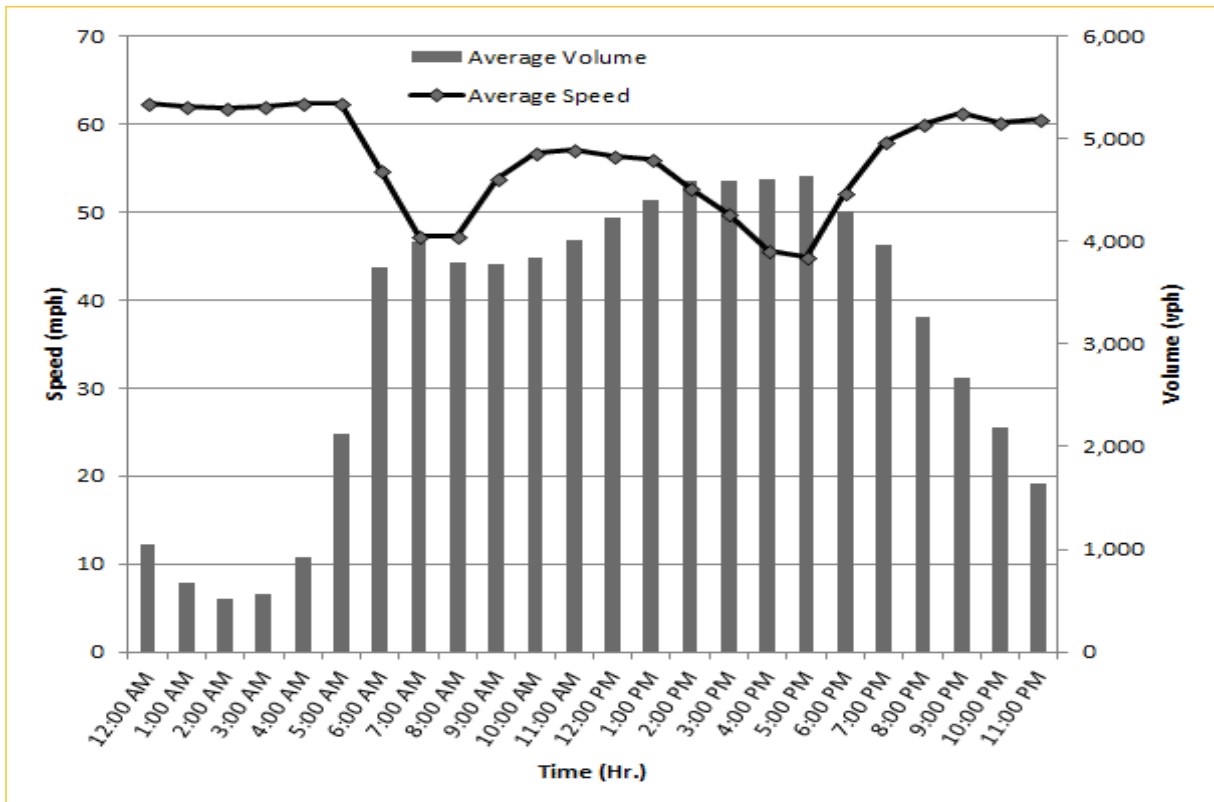
TRAVEL TIME RELIABILITY REPORT

Weekdays Speeds and Volumes by Time of Day*

SR 826 Eastbound: 7.1 Miles
 From: West of NW 67 Avenue
 To: I-95



SR 826 Westbound: 7.1 Miles
 From: I-95
 To: West of NW 67 Avenue



* Twelve-month average from August 1st, 2017 to July 31st, 2018.