

## TRAVEL TIME RELIABILITY REPORT

### Travel Time Index by Roadway\*

Time	I-95		I-195		I-75		SR 826					
	NB	SB	EB	WB	NB	SB	NB***	EB	NE***	SB***	WB	SW***
0:00	1.03	1.03	0.97	0.98	0.99	1.02	1.08	0.97	1.03	0.98	0.98	0.97
1:00	1.00	1.03	0.97	0.97	1.02	1.04	1.07	0.98	1.02	0.99	0.98	0.98
2:00	0.99	1.02	0.97	0.98	1.08	1.04	1.08	0.99	1.04	1.01	0.99	0.99
3:00	0.98	1.02	0.98	0.97	1.12	1.04	1.08	0.99	1.04	1.00	0.99	0.99
4:00	0.98	1.01	0.96	0.96	1.15	1.02	1.07	0.99	1.03	0.99	0.98	0.98
5:00	0.99	1.02	0.97	0.96	1.10	0.99	1.06	0.99	1.02	0.99	0.98	0.97
6:00	1.08	1.46	1.08	0.96	1.03	1.04	1.14	1.25	1.18	1.35	1.13	1.24
7:00	1.16	2.18	1.23	0.99	1.01	1.24	1.27	1.52	1.37	1.77	1.34	1.57
8:00	1.20	2.51	1.58	1.08	1.02	1.23	1.29	1.50	1.36	1.89	1.37	1.64
9:00	1.13	1.86	1.34	1.03	1.02	1.10	1.24	1.19	1.20	1.60	1.18	1.39
10:00	1.12	1.44	1.14	1.04	1.02	1.06	1.20	1.08	1.14	1.34	1.08	1.20
11:00	1.13	1.33	1.07	1.05	1.03	1.05	1.19	1.07	1.13	1.20	1.07	1.13
12:00	1.16	1.26	1.06	1.05	1.02	1.05	1.23	1.06	1.15	1.17	1.10	1.13
13:00	1.21	1.22	1.05	1.05	1.01	1.06	1.24	1.07	1.16	1.19	1.11	1.15
14:00	1.35	1.27	1.10	1.08	1.00	1.06	1.36	1.09	1.23	1.27	1.16	1.21
15:00	1.73	1.31	1.12	1.40	1.00	1.07	1.68	1.10	1.41	1.36	1.25	1.30
16:00	2.09	1.38	1.07	1.81	0.99	1.06	2.12	1.11	1.66	1.72	1.34	1.53
17:00	2.25	1.52	1.09	1.67	1.09	1.04	2.44	1.18	1.86	2.21	1.37	1.82
18:00	1.96	1.50	1.18	1.23	1.08	1.04	2.13	1.16	1.68	1.91	1.17	1.57
19:00	1.42	1.24	1.11	1.04	0.98	1.03	1.38	1.06	1.23	1.23	1.05	1.13
20:00	1.14	1.12	1.03	1.02	0.96	1.02	1.13	1.03	1.08	1.03	1.02	1.02
21:00	1.09	1.09	1.03	1.01	0.96	1.01	1.08	1.01	1.04	0.99	1.00	0.99
22:00	1.08	1.09	1.01	1.00	0.97	1.00	1.13	0.99	1.06	1.05	1.02	1.02
23:00	1.13	1.06	0.99	0.99	1.00	1.01	1.18	0.98	1.08	1.03	1.00	1.01
<b>FFS**</b>	<b>62 mph</b>	<b>61 mph</b>	<b>58 mph</b>	<b>58 mph</b>	<b>65 mph</b>	<b>63 mph</b>	<b>55 mph</b>	<b>61 mph</b>	<b>58 mph</b>	<b>61 mph</b>	<b>61 mph</b>	<b>61 mph</b>

Maximum Travel Time Index. \*\* FFS: Free Flow Speed. \*\*\* Twelve-month average from March 1<sup>st</sup>, 2017 to February 28<sup>th</sup> 2018.

**Travel Time Index (TTI)** is a measure of average conditions that indicates how much longer, **on average**, travel times are during congestion compared to during light traffic.

**Real World Example:** A TTI of 1.60 means that for a trip that usually takes 10 minutes in light traffic, a traveler should budget for an additional 6 minutes **on average**.

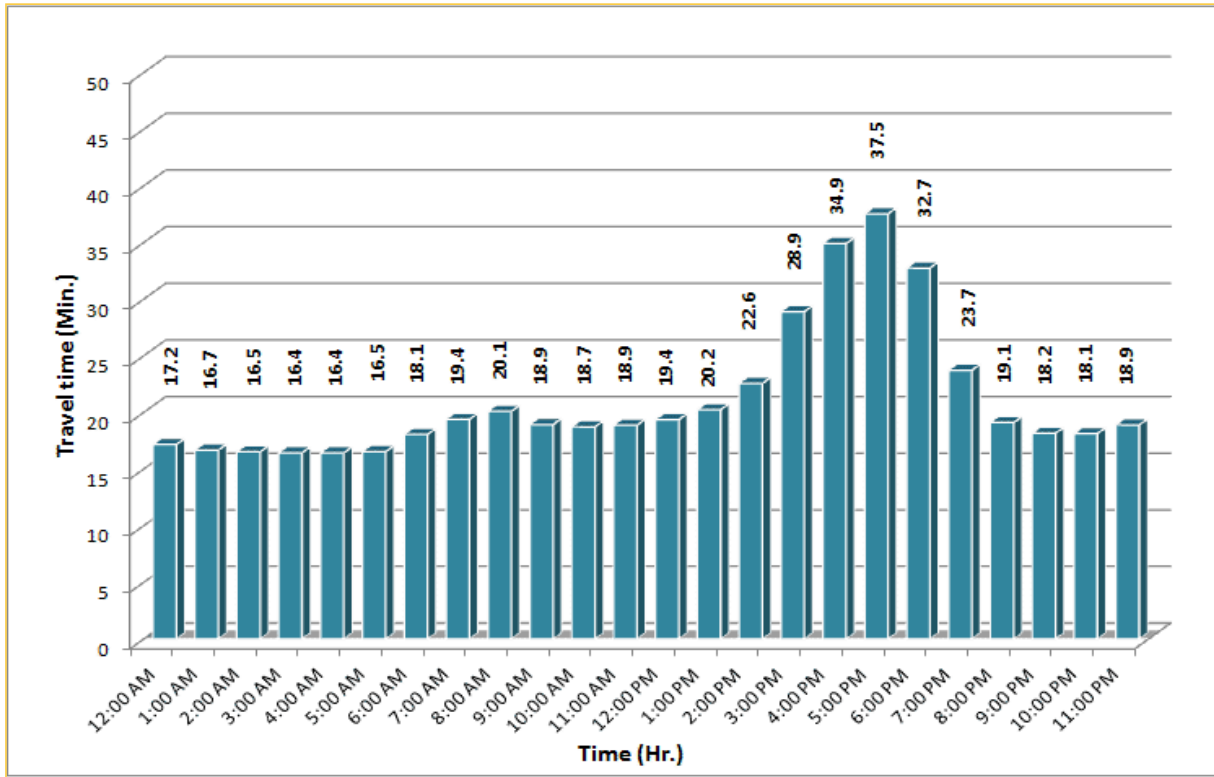


\* Twelve-month average from April 1<sup>st</sup>, 2017 to March 31<sup>st</sup>, 2018.

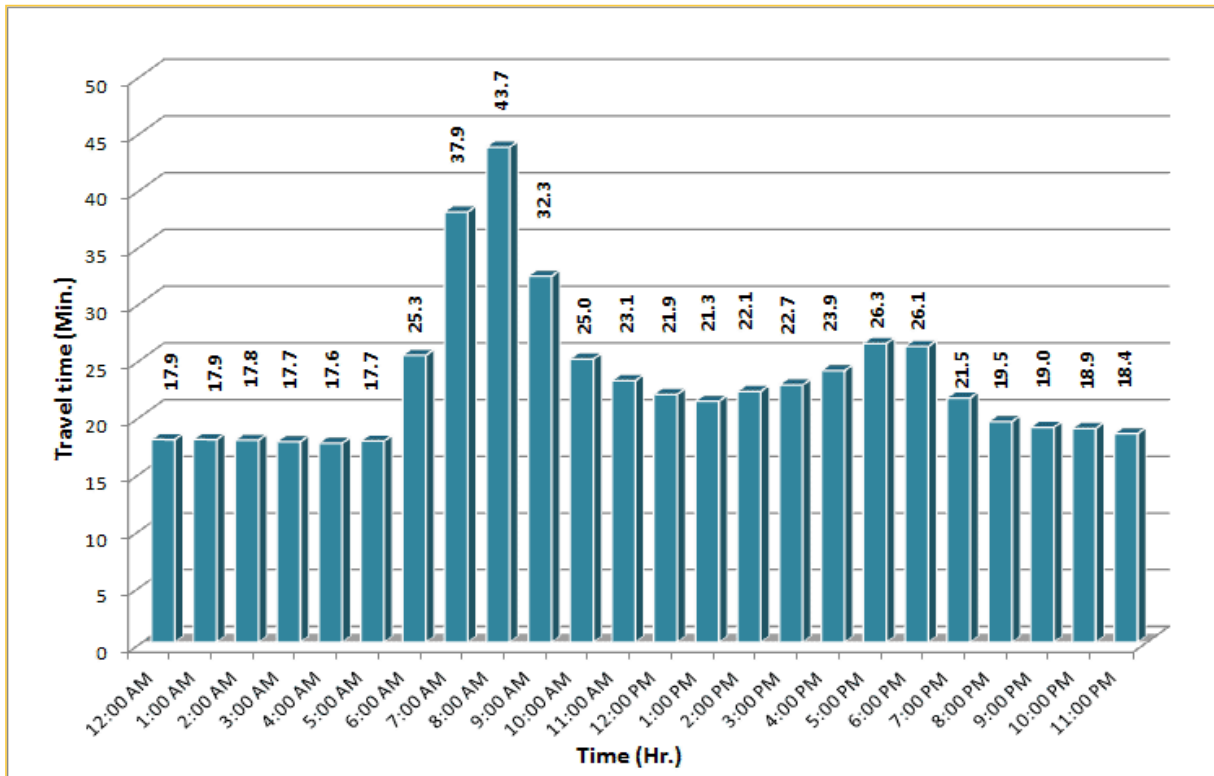
## TRAVEL TIME RELIABILITY REPORT

### Weekdays Travel Times by Time of Day\*

**I-95 Northbound: 17.3 Miles**  
 From: US-1  
 To: Miami-Dade / Broward County Line

**I-95 Southbound: 17.3 Miles**  
 From: Miami-Dade / Broward County Line  
 To: US-1

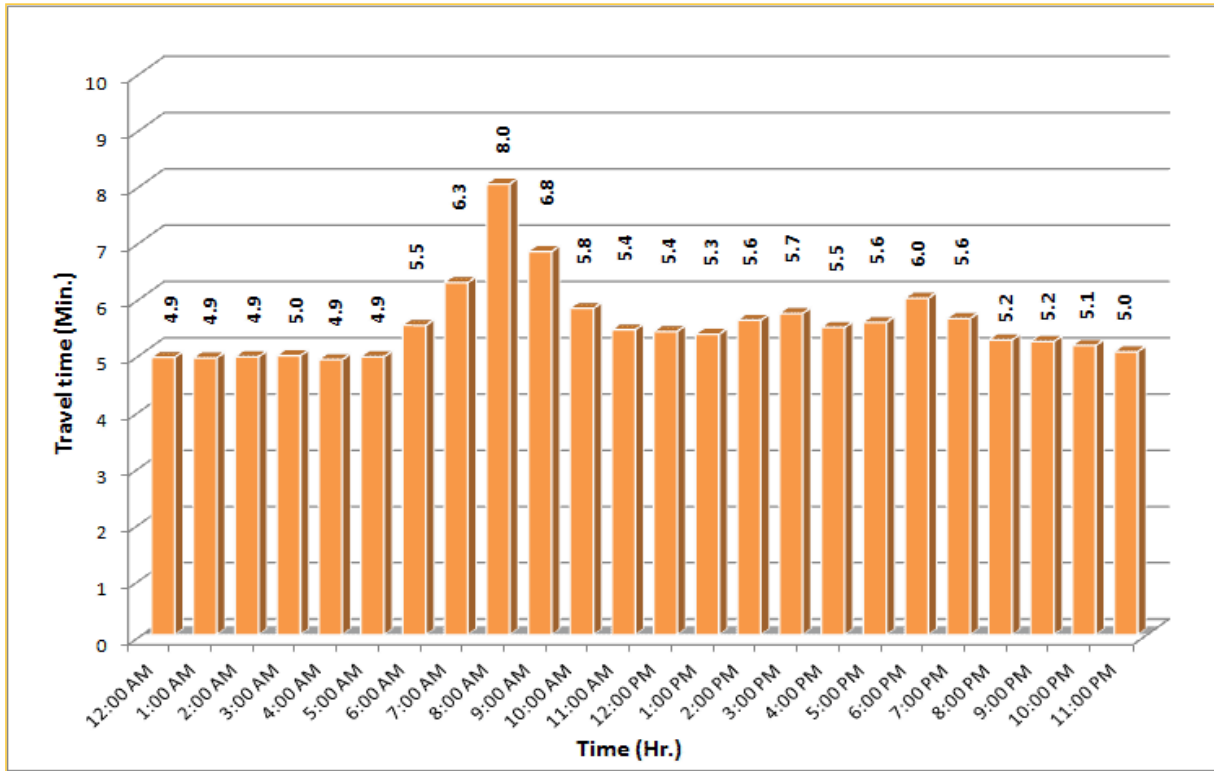
\* Twelve-month average from April 1<sup>st</sup>, 2017 to March 31<sup>st</sup>, 2018.

Excludes express lanes.

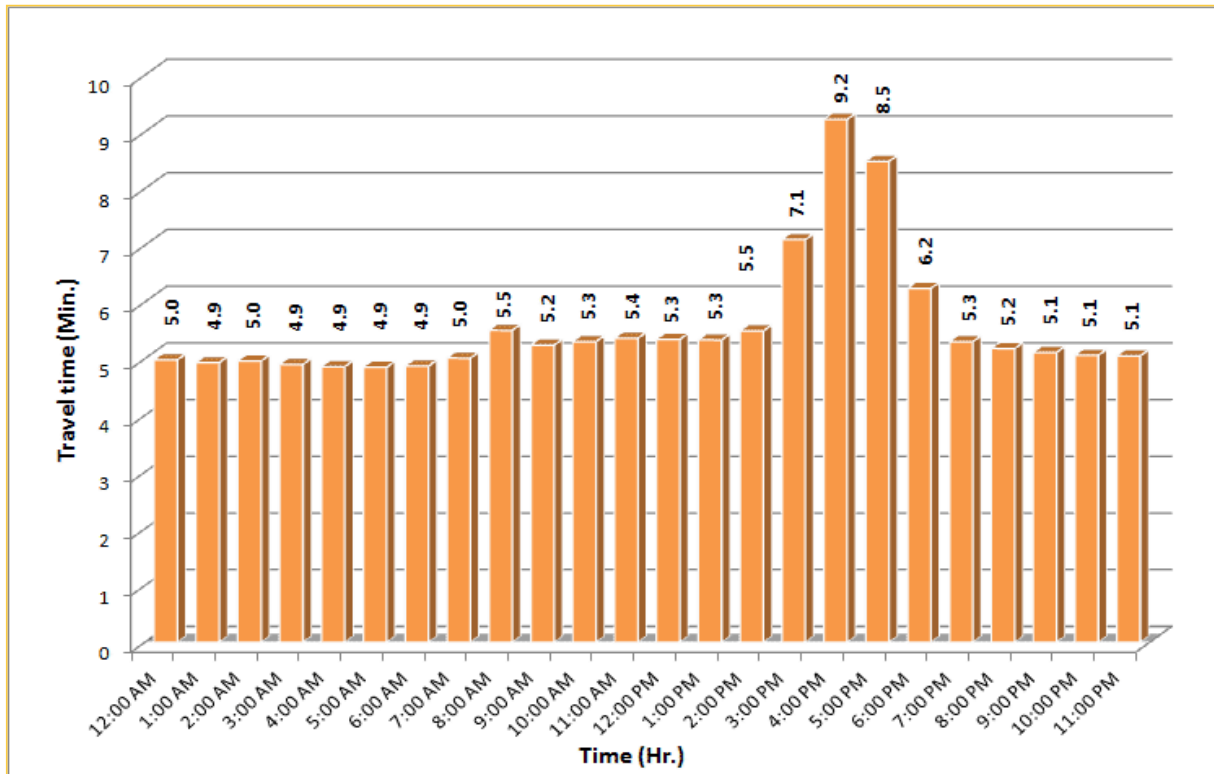
## TRAVEL TIME RELIABILITY REPORT

### Weekdays Travel Times by Time of Day\*

**I-195 Eastbound: 4.9 Miles**  
 From: West of North Miami Avenue  
 To: West of Alton Road



**I-195 Westbound: 4.9 Miles**  
 From: West of Alton Road  
 To: West of North Miami Avenue

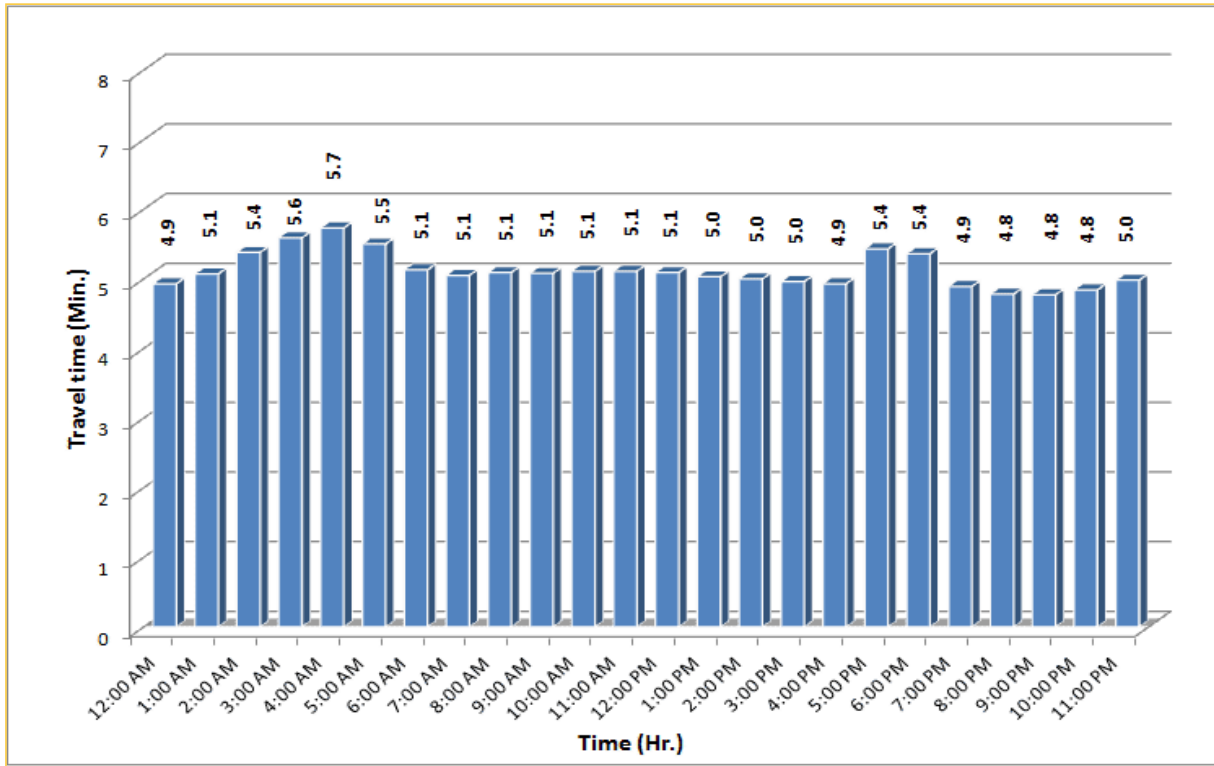


\* Twelve-month average from April 1<sup>st</sup>, 2017 to March 31<sup>st</sup>, 2018.

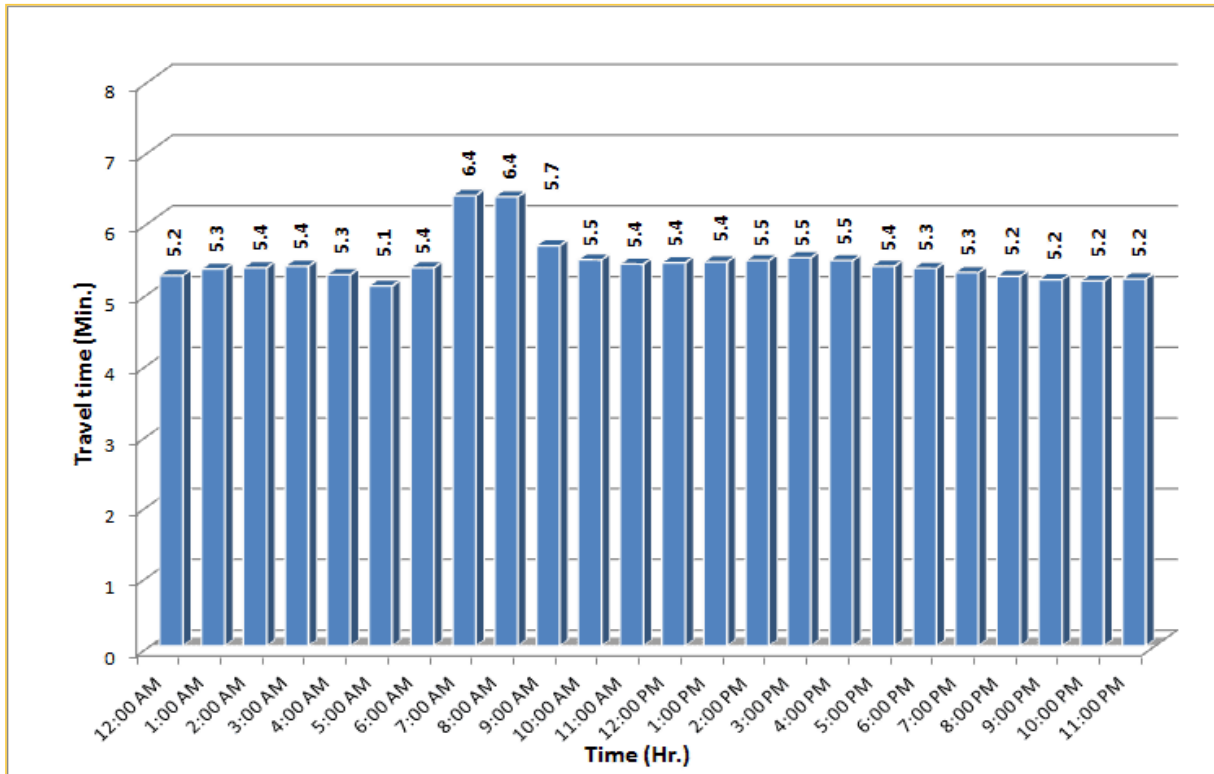
## TRAVEL TIME RELIABILITY REPORT

### Weekdays Travel Times by Time of Day\*

**I-75 Northbound: 5.4 Miles**  
 From: West of SR 826  
 To: North of Florida's Turnpike



**I-75 Southbound: 5.4 Miles**  
 From: North of Florida's Turnpike  
 To: West of SR 826


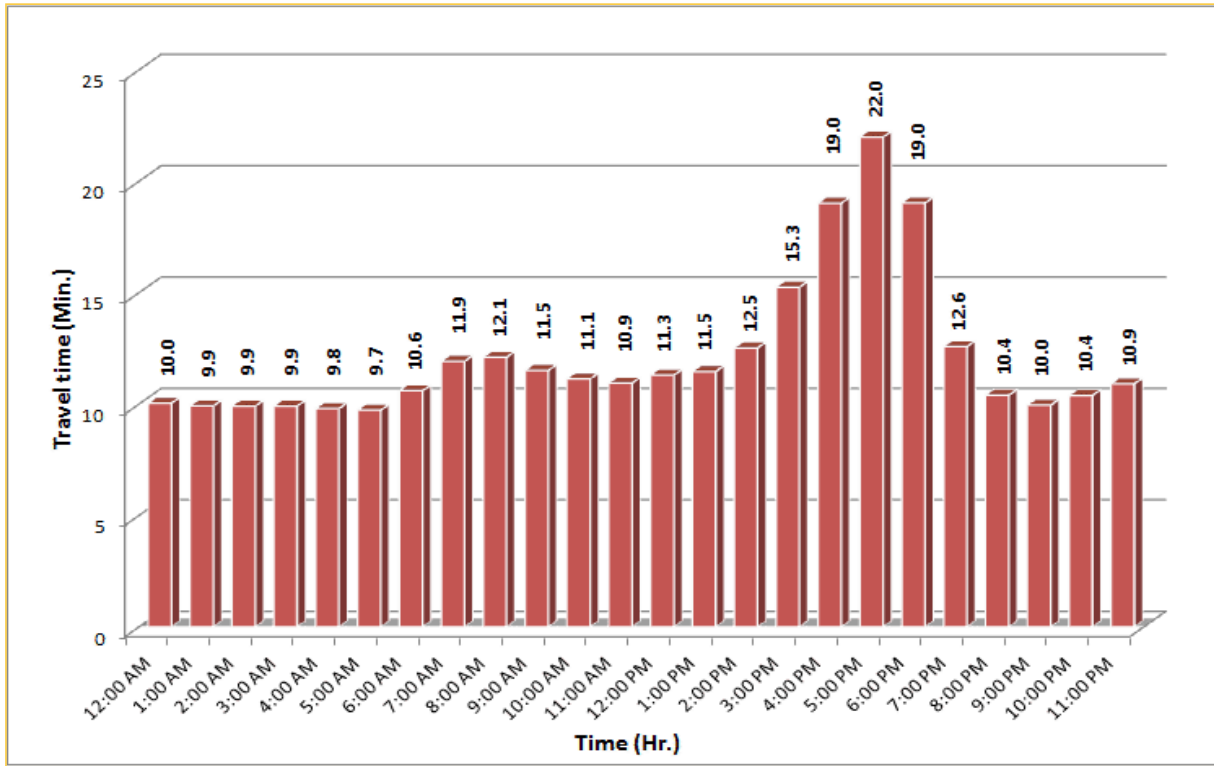


\* Twelve-month average from April 1<sup>st</sup>, 2017 to March 31<sup>st</sup>, 2018.


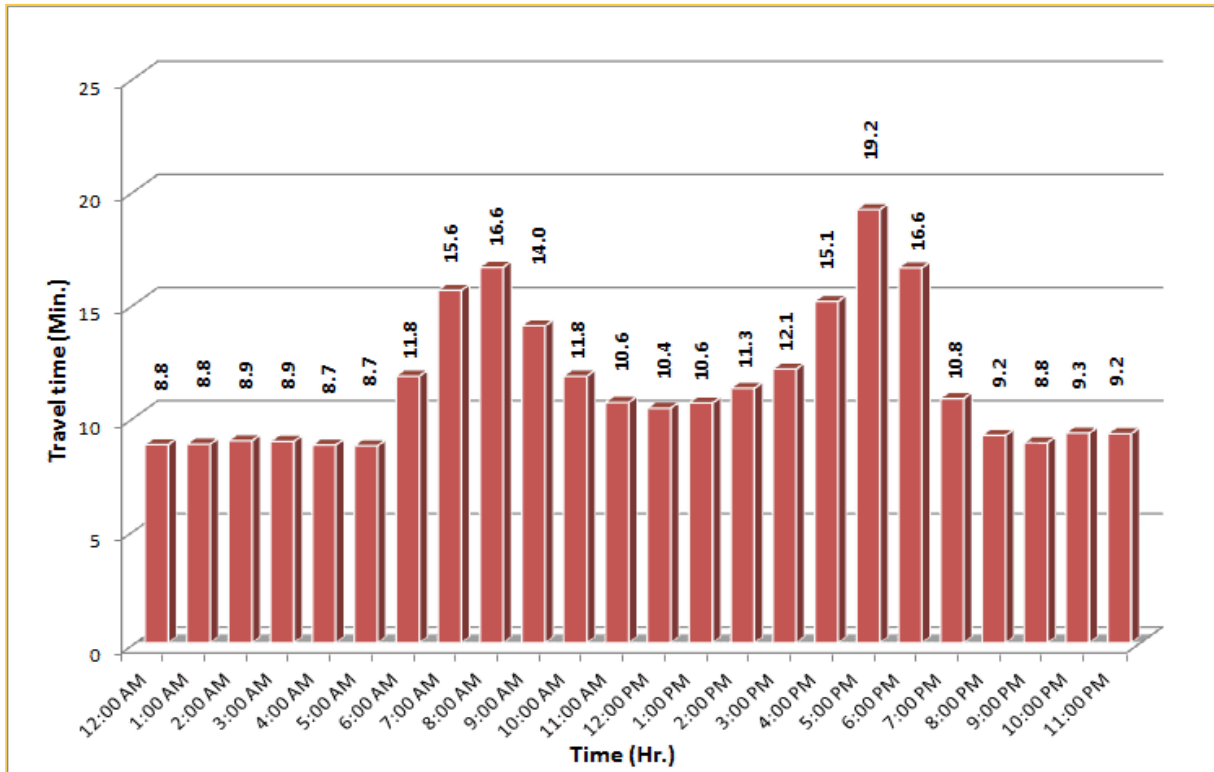
## TRAVEL TIME RELIABILITY REPORT

### Weekdays Travel Times by Time of Day\*

**SR 826 Northbound: 8.4 Miles**  
 From: South of NW 25 Street  
 To: North of NW 154 Street

**SR 826 Southbound: 8.4 Miles**  
 From: North of NW 154 Street  
 To: South of NW 25 Street

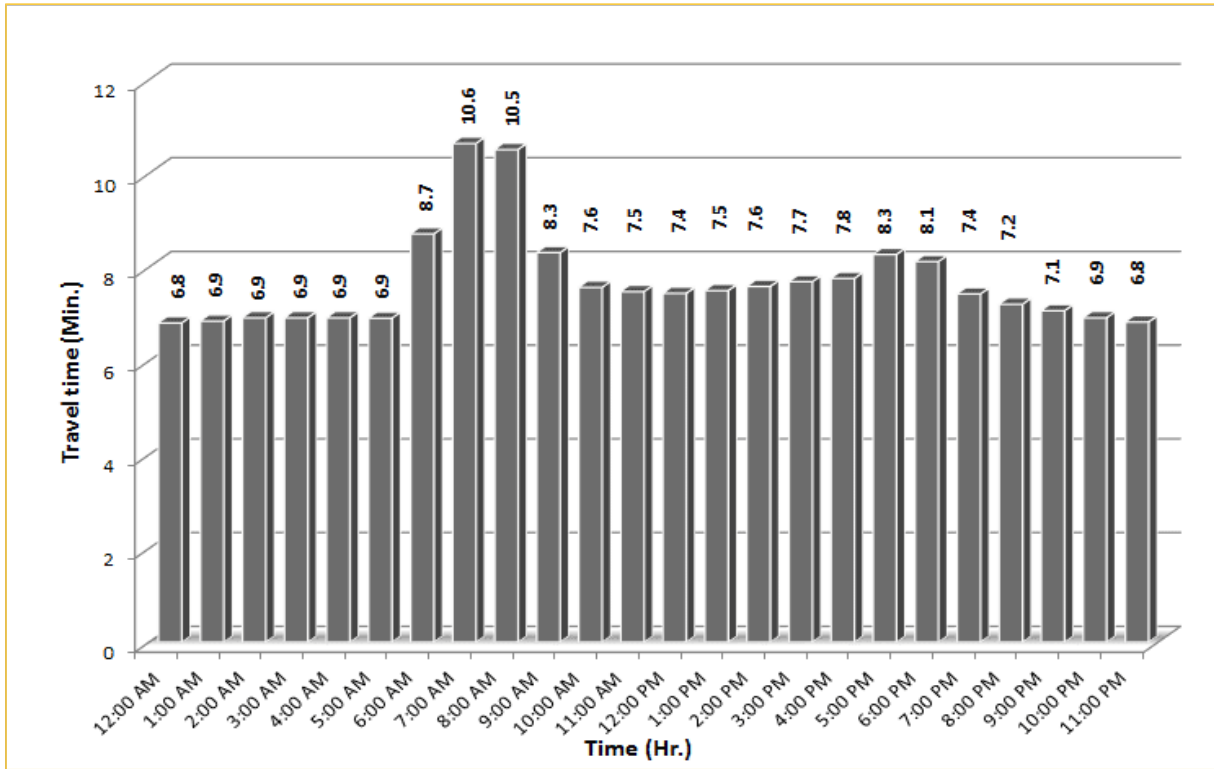
\* Twelve-month average from April 1<sup>st</sup>, 2017 to March 31<sup>st</sup>, 2018.



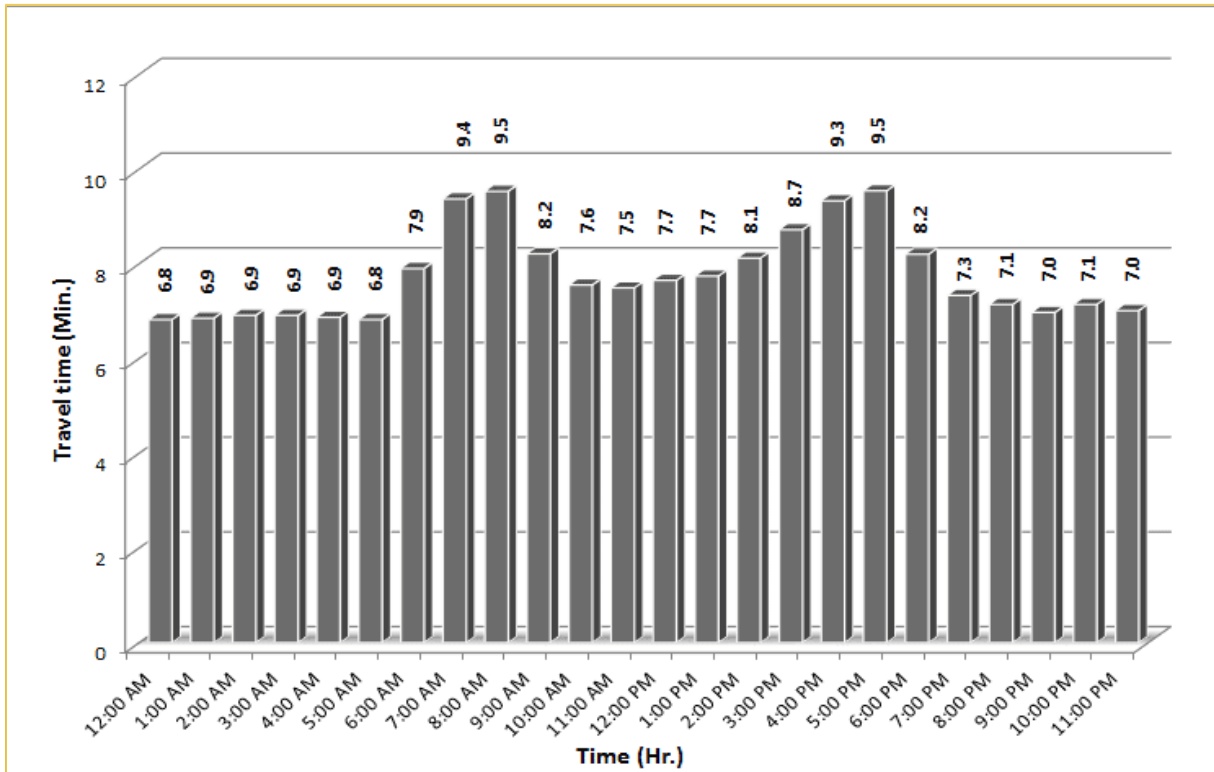
## TRAVEL TIME RELIABILITY REPORT

### Weekdays Travel Times by Time of Day\*

**SR 826 Eastbound: 7.1 Miles**  
 From: West of NW 67 Avenue  
 To: East of NW 12 Avenue

**SR 826 Westbound: 7.1 Miles**  
 From: East of NW 12 Avenue  
 To: West of NW 67 Avenue

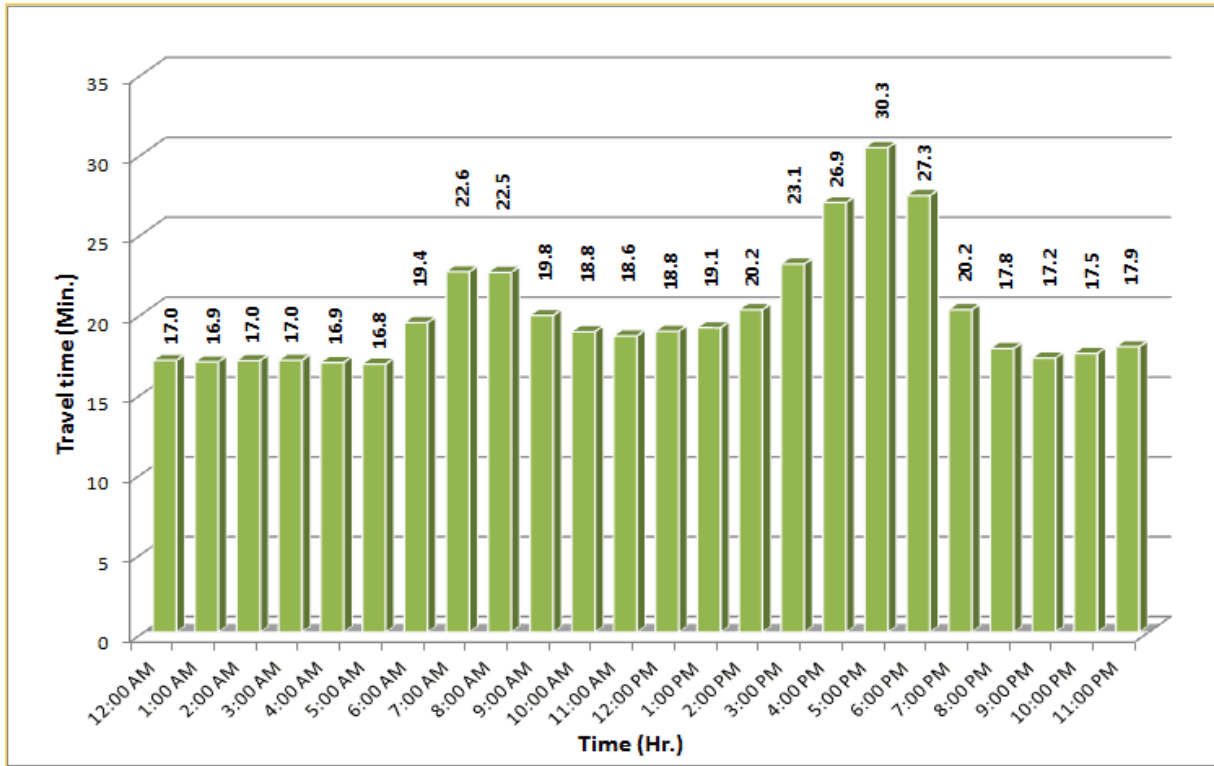



\* Twelve-month average from April 1<sup>st</sup>, 2017 to March 31<sup>st</sup>, 2018.

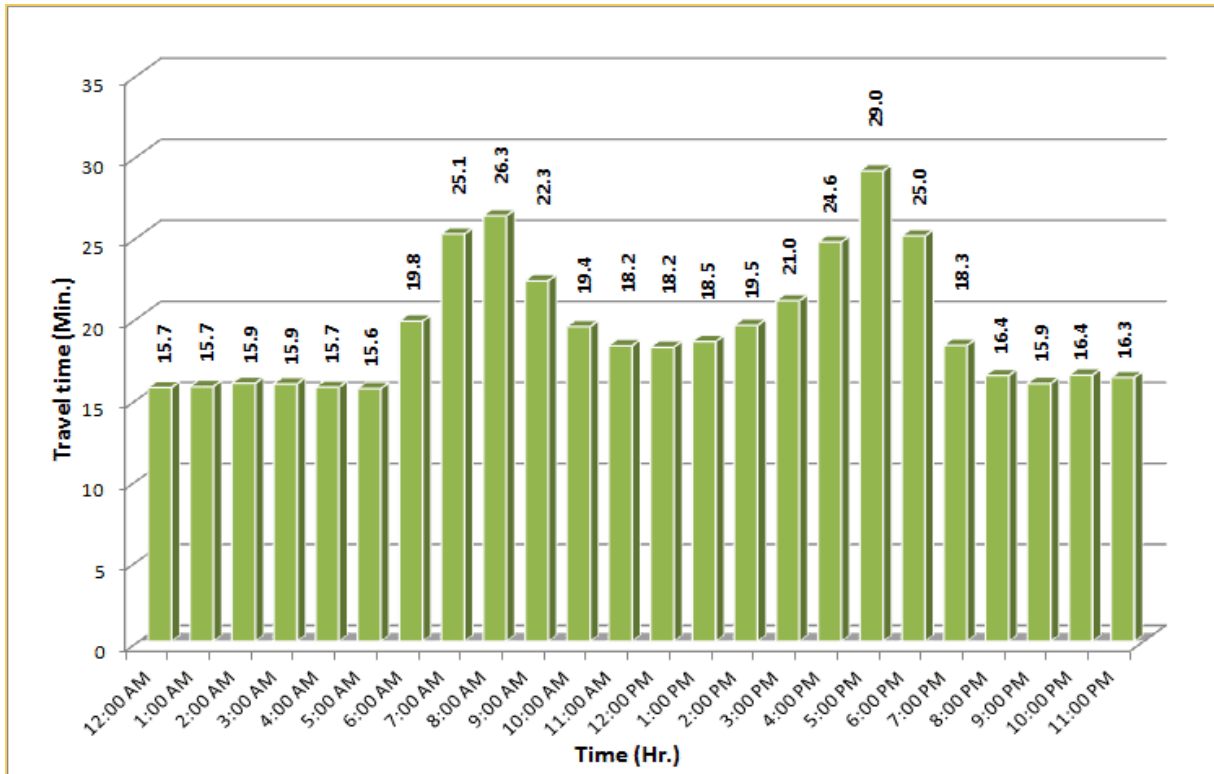
## TRAVEL TIME RELIABILITY REPORT

### Weekdays Travel Times by Time of Day\*

**SR 826 Northbound/Eastbound : 15.6 Miles**  
 From: South of NW 25 Street  
 To: East of NW 12 Avenue

**SR 826 Southbound/Westbound: 15.6 Miles**  
 From: East of NW 12 Avenue  
 To: South of NW 25 Street

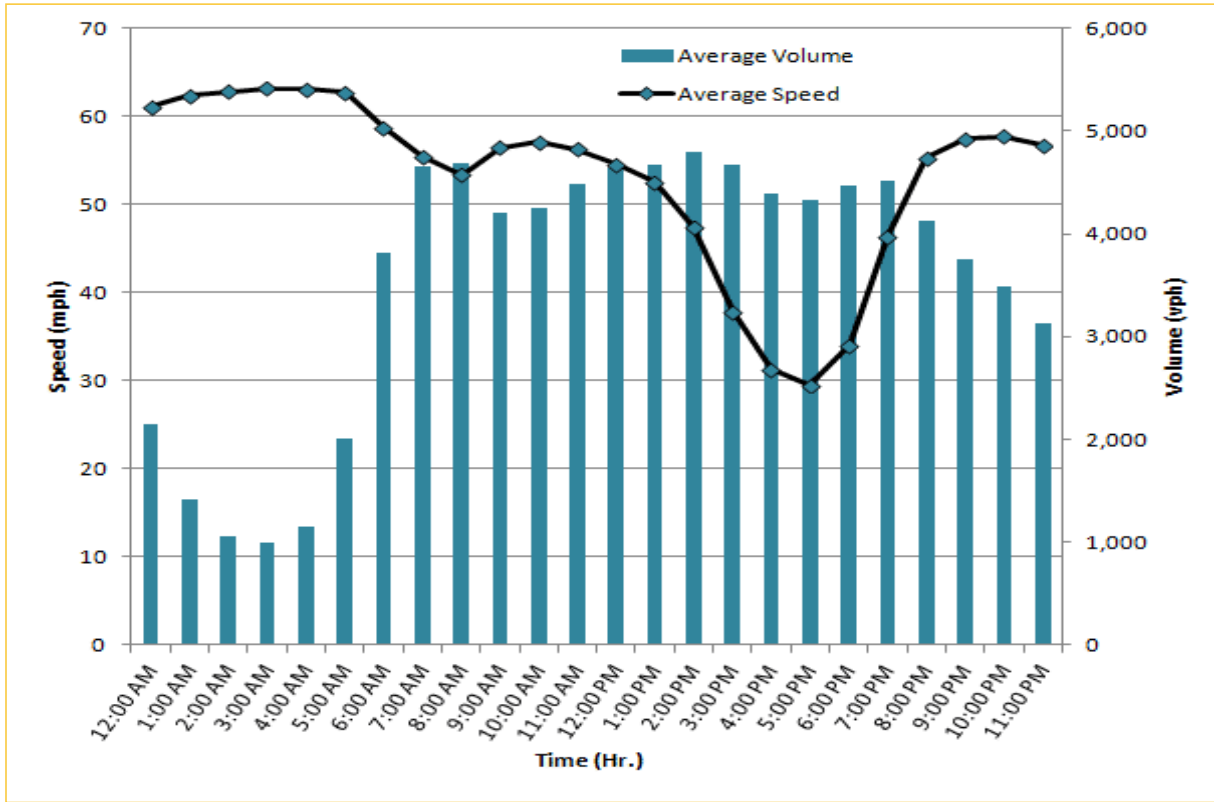



\* Twelve-month average from April 1<sup>st</sup>, 2017 to March 31<sup>st</sup>, 2018.

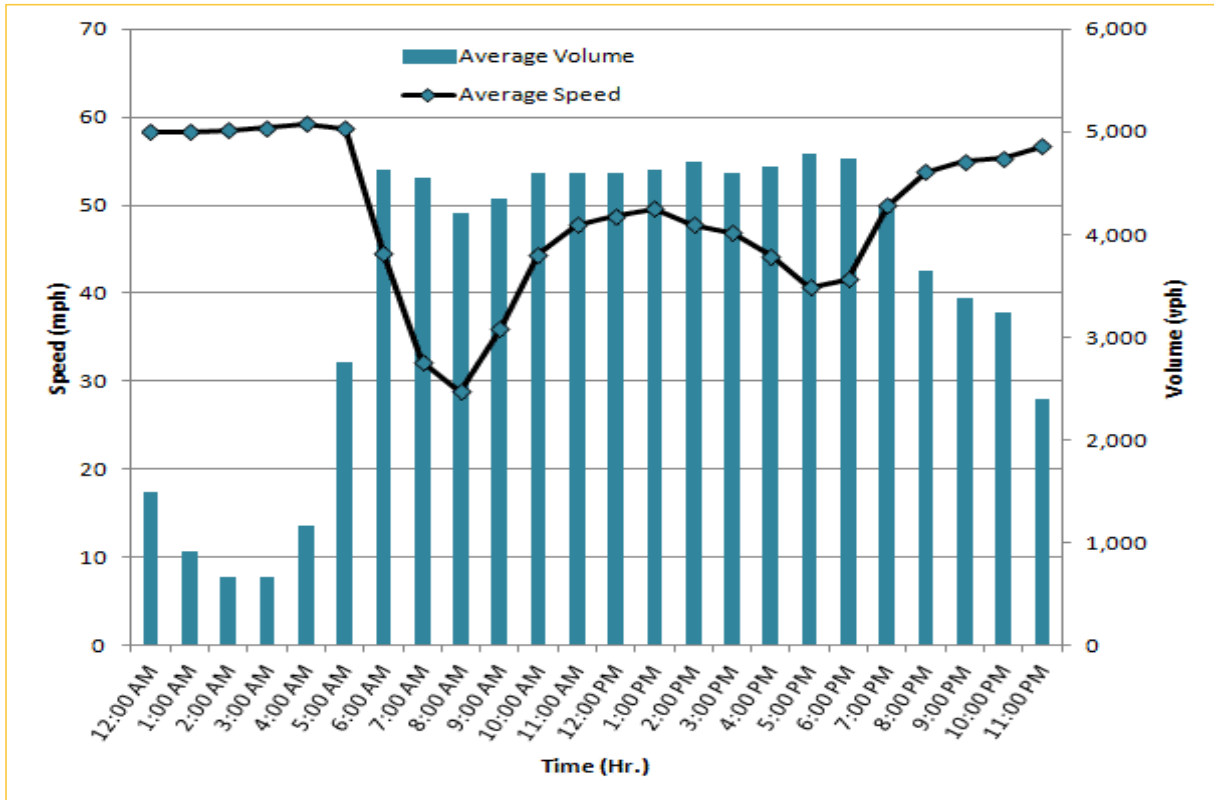
## TRAVEL TIME RELIABILITY REPORT

### Weekdays Speeds and Volumes by Time of Day\*

**I-95 Northbound: 17.3 Miles**  
 From: US-1  
 To: Miami-Dade / Broward County Line



**I-95 Southbound: 17.3 Miles**  
 From: Miami-Dade / Broward County Line  
 To: US-1



\* Twelve-month average from April 1<sup>st</sup>, 2017 to March 31<sup>st</sup>, 2018.

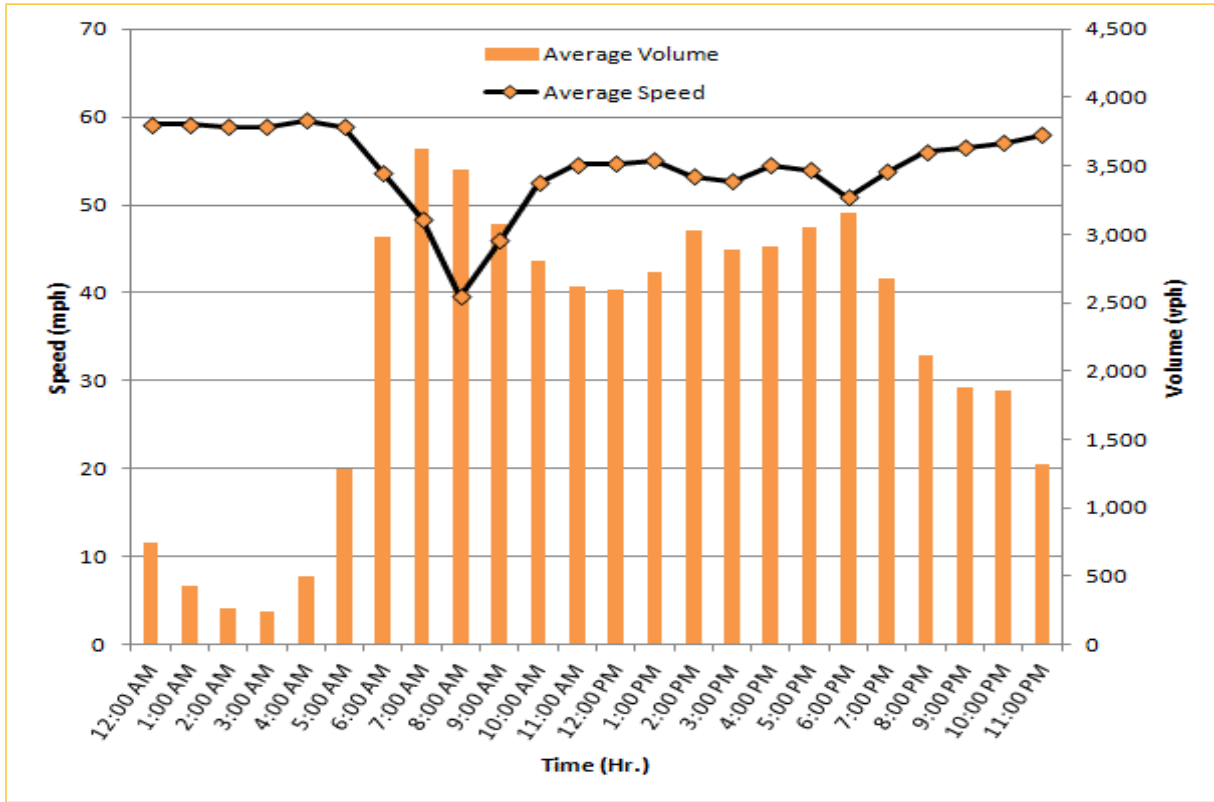
Excludes express lanes.



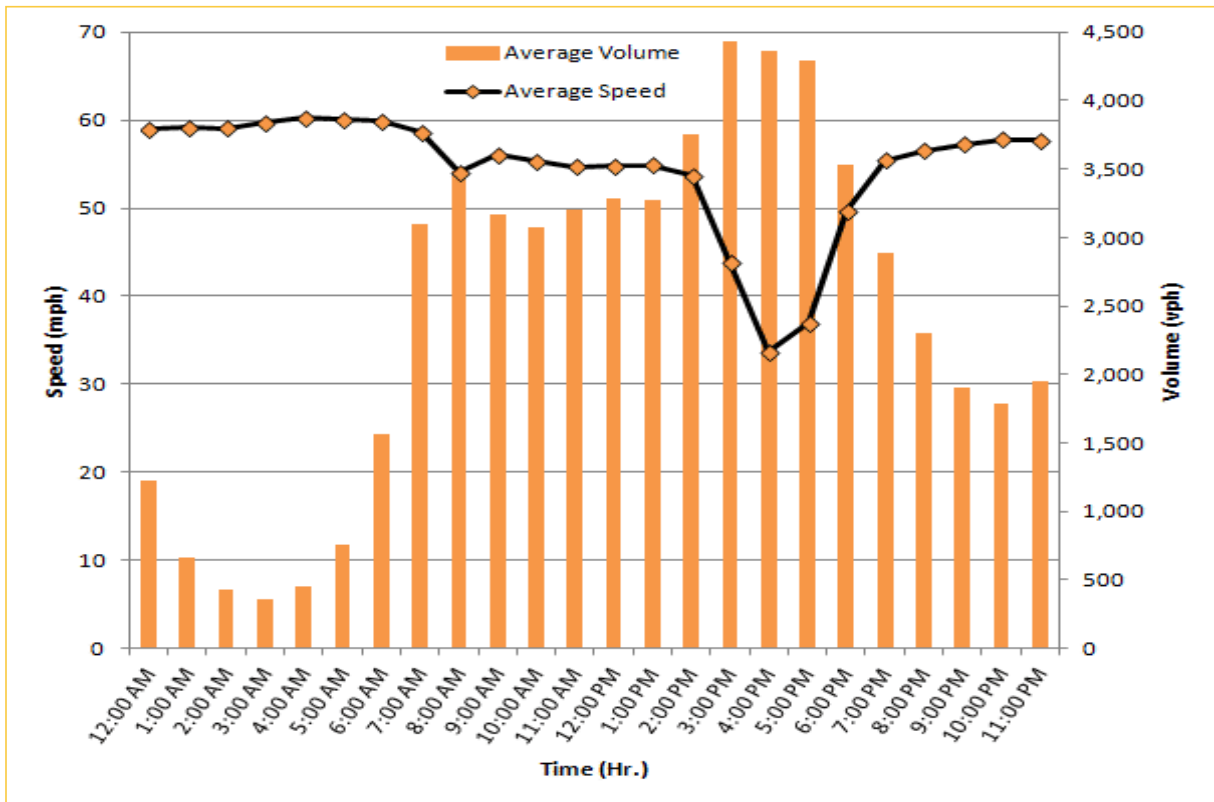
## TRAVEL TIME RELIABILITY REPORT

### Weekdays Speeds and Volumes by Time of Day\*

**I-195 Eastbound: 4.9 Miles**  
 From: West of North Miami Avenue  
 To: West of Alton Road



**I-195 Westbound: 4.9 Miles**  
 From: West of Alton Road  
 To: West of North Miami Avenue

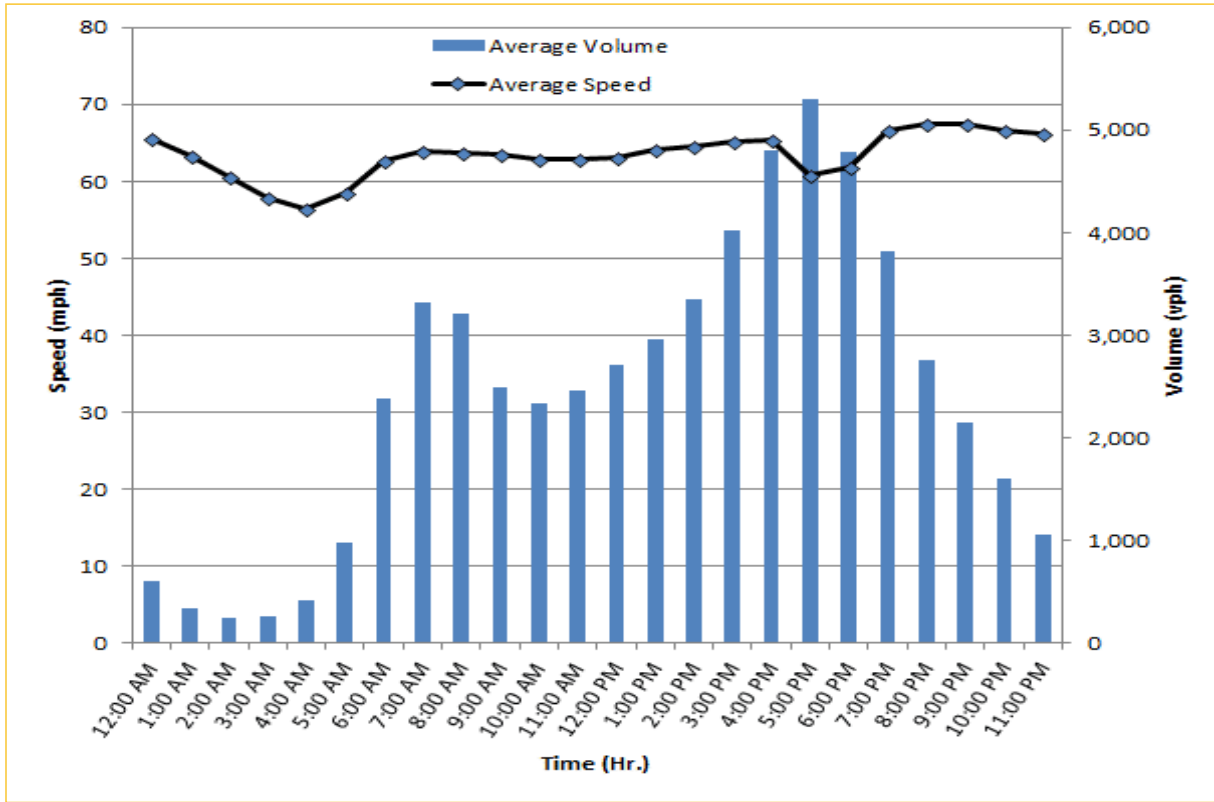


\* Twelve-month average from April 1<sup>st</sup>, 2017 to March 31<sup>st</sup>, 2018.

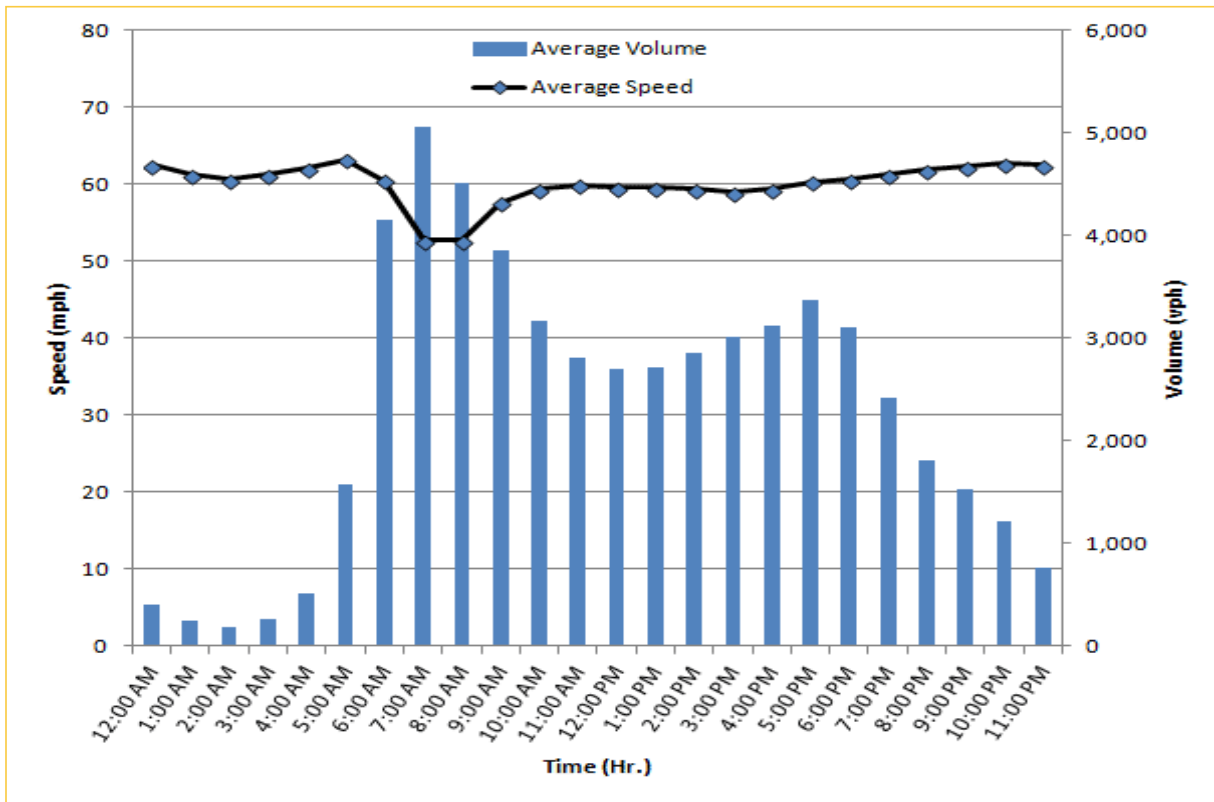
## TRAVEL TIME RELIABILITY REPORT

### Weekdays Speeds and Volumes by Time of Day\*

**I-75 Northbound: 5.4 Miles**  
 From: West of SR 826  
 To: North of Florida's Turnpike



**I-75 Southbound: 5.4 Miles**  
 From: North of Florida's Turnpike  
 To: West of SR 826

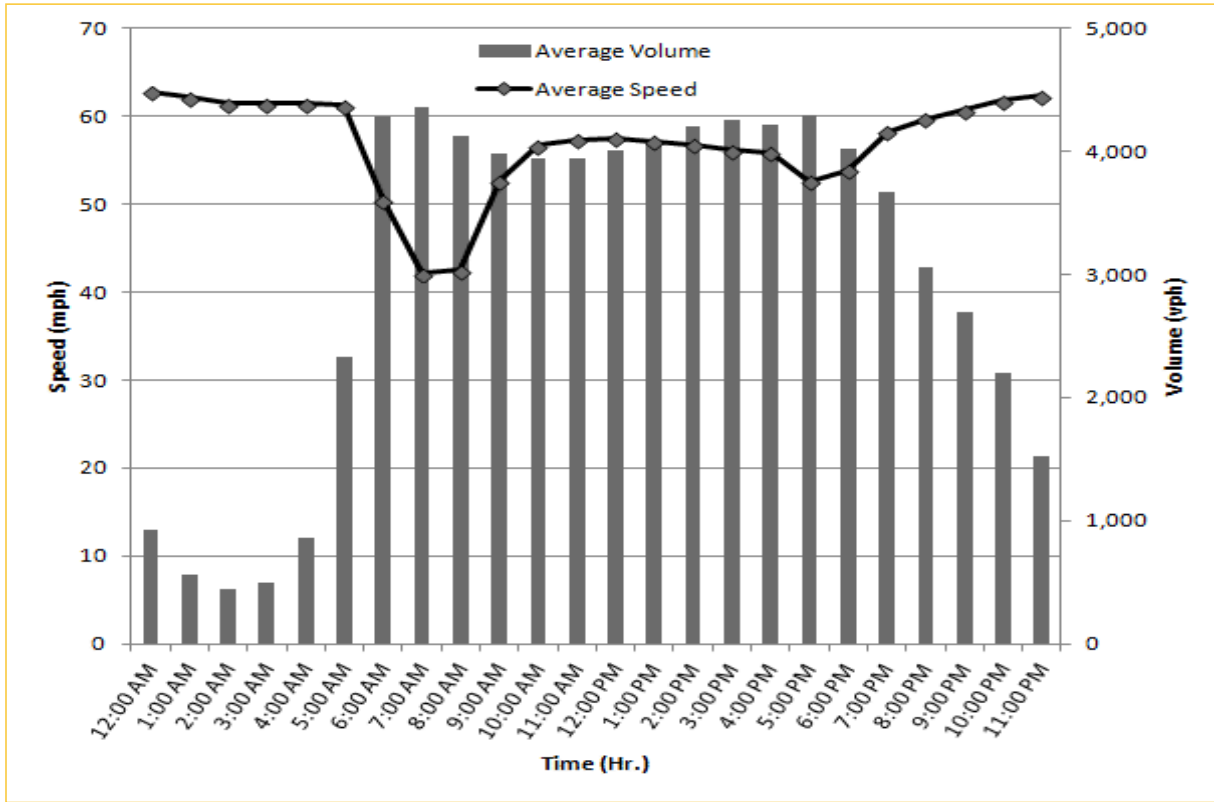


\* Twelve-month average from April 1<sup>st</sup>, 2017 to March 31<sup>st</sup>, 2018.

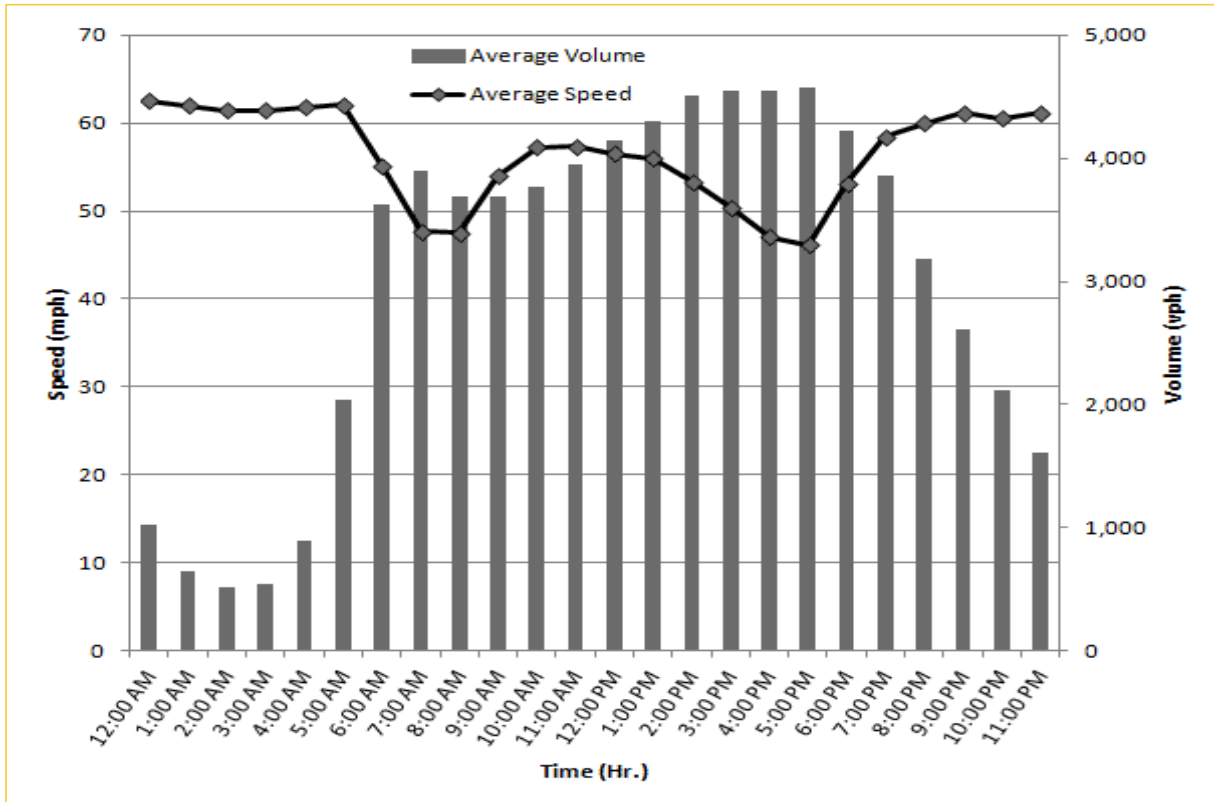
## TRAVEL TIME RELIABILITY REPORT

### Weekdays Speeds and Volumes by Time of Day\*

**SR 826 Eastbound: 7.1 Miles**  
 From: West of NW 67 Avenue  
 To: East of NW 12 Avenue



**SR 826 Westbound: 7.1 Miles**  
 From: East of NW 12 Avenue  
 To: West of NW 67 Avenue



\* Twelve-month average from April 1<sup>st</sup>, 2017 to March 31<sup>st</sup>, 2018.