

TRAVEL TIME RELIABILITY REPORT

Travel Time Index by Roadway*

Time	I-95		I-195		I-75		SR 826					
	NB	SB	EB	WB	NB	SB	NB	EB	NB/EB	SB	WB	SB/WB
0:00	1.10	1.12	1.03	1.13	1.03	0.99	1.00	0.96	0.98	1.02	0.97	0.98
1:00	1.04	1.11	1.03	1.06	1.04	1.01	1.02	0.97	1.00	1.03	0.98	1.00
2:00	1.03	1.10	1.04	1.06	1.08	1.02	1.04	0.99	1.02	1.05	1.00	1.01
3:00	1.03	1.10	1.05	1.06	1.13	1.02	1.06	0.99	1.02	1.04	1.01	1.01
4:00	1.02	1.10	1.03	1.06	1.18	1.01	1.05	0.99	1.02	1.02	1.00	1.00
5:00	1.01	1.09	1.03	1.04	1.15	0.99	1.04	0.97	1.01	1.01	0.97	0.98
6:00	1.03	1.30	1.07	1.03	1.12	1.01	1.07	1.07	1.07	1.26	1.10	1.16
7:00	1.07	1.97	1.16	1.04	1.11	1.27	1.09	1.36	1.21	1.79	1.48	1.60
8:00	1.10	2.34	1.54	1.10	1.13	1.44	1.09	1.31	1.18	2.10	1.56	1.79
9:00	1.07	1.76	1.38	1.07	1.11	1.13	1.10	1.08	1.08	1.60	1.21	1.39
10:00	1.07	1.37	1.13	1.08	1.11	1.03	1.12	1.02	1.07	1.22	1.05	1.12
11:00	1.09	1.22	1.11	1.10	1.09	1.03	1.13	1.02	1.08	1.15	1.03	1.08
12:00	1.11	1.19	1.11	1.10	1.09	1.03	1.13	1.02	1.08	1.15	1.02	1.07
13:00	1.12	1.19	1.12	1.09	1.09	1.03	1.14	1.03	1.09	1.17	1.05	1.10
14:00	1.18	1.20	1.18	1.11	1.11	1.04	1.18	1.03	1.11	1.24	1.06	1.14
15:00	1.43	1.24	1.22	1.25	1.14	1.04	1.32	1.03	1.18	1.42	1.08	1.24
16:00	1.77	1.28	1.09	1.65	1.13	1.04	1.81	1.03	1.44	1.85	1.14	1.49
17:00	1.95	1.40	1.06	1.68	1.21	1.03	2.24	1.10	1.70	2.32	1.22	1.77
18:00	1.74	1.34	1.10	1.33	1.39	1.02	2.04	1.05	1.58	2.05	1.08	1.57
19:00	1.28	1.17	1.08	1.10	1.14	1.01	1.30	0.99	1.15	1.31	1.01	1.15
20:00	1.07	1.11	1.07	1.07	1.07	1.01	1.06	0.97	1.02	1.07	0.98	1.01
21:00	1.11	1.18	1.08	1.07	1.07	1.00	1.04	0.97	1.00	1.03	0.97	0.99
22:00	1.18	1.31	1.08	1.08	1.05	1.00	1.05	0.98	1.02	1.02	0.99	0.99
23:00	1.23	1.22	1.07	1.13	1.04	1.00	1.04	0.96	1.00	1.03	0.99	1.00
FFS**	60 mph	60 mph	60 mph	60 mph	67 mph	67 mph	60 mph	58 mph	59 mph	63 mph	60 mph	61 mph

*Maximum Travel Time Index. ** FFS: Free Flow Speed*

Travel Time Index (TTI) is a measure of average conditions that indicates how much longer, **on average**, travel times are during congestion compared to during light traffic.

Real World Example: A TTI of 1.60 means that for a trip that usually takes 10 minutes in light traffic, a traveler should budget for an additional 6 minutes **on average**.

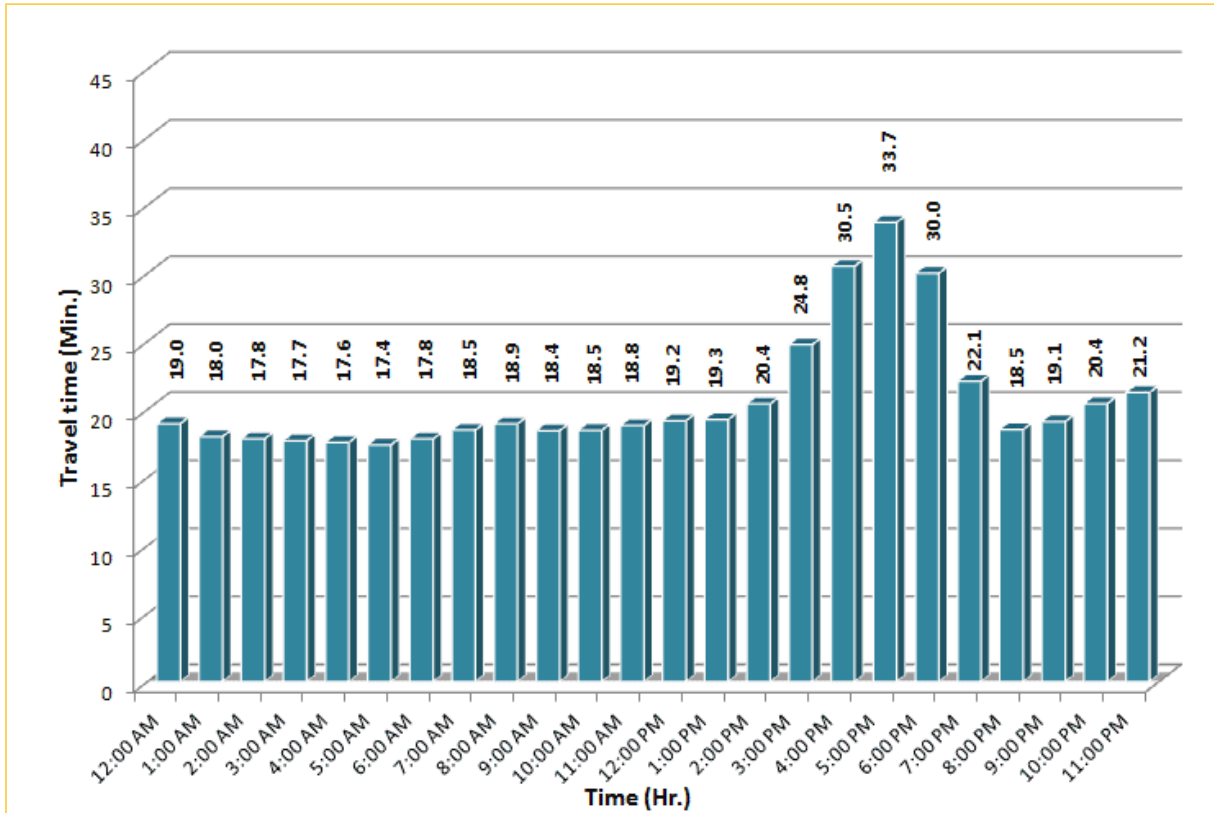


* Twelve-month average from October 1st, 2014 to September 30th, 2015.

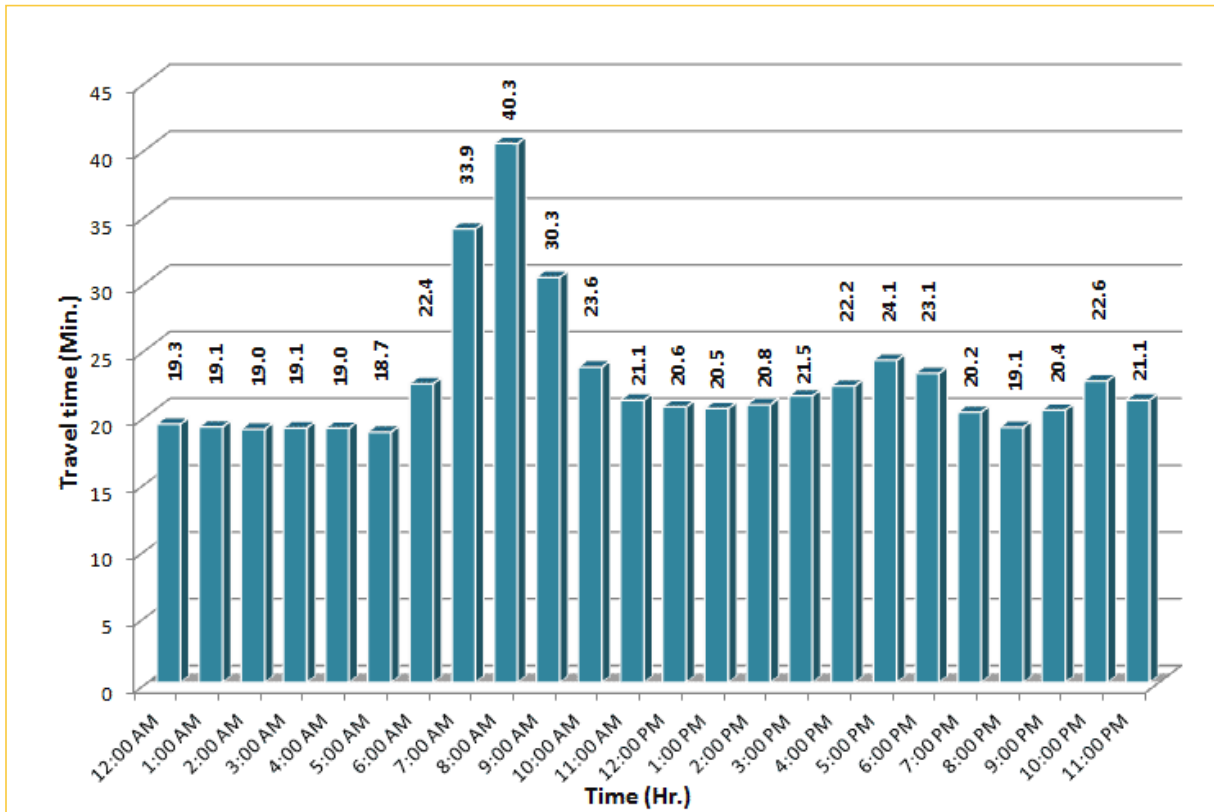
TRAVEL TIME RELIABILITY REPORT

Weekdays Travel Times by Time of Day*

I-95 Northbound: 17.3 Miles
From: US-1
To: Miami-Dade / Broward County Line

I-95 Southbound: 17.3 Miles
From: Miami-Dade / Broward County Line
To: US-1

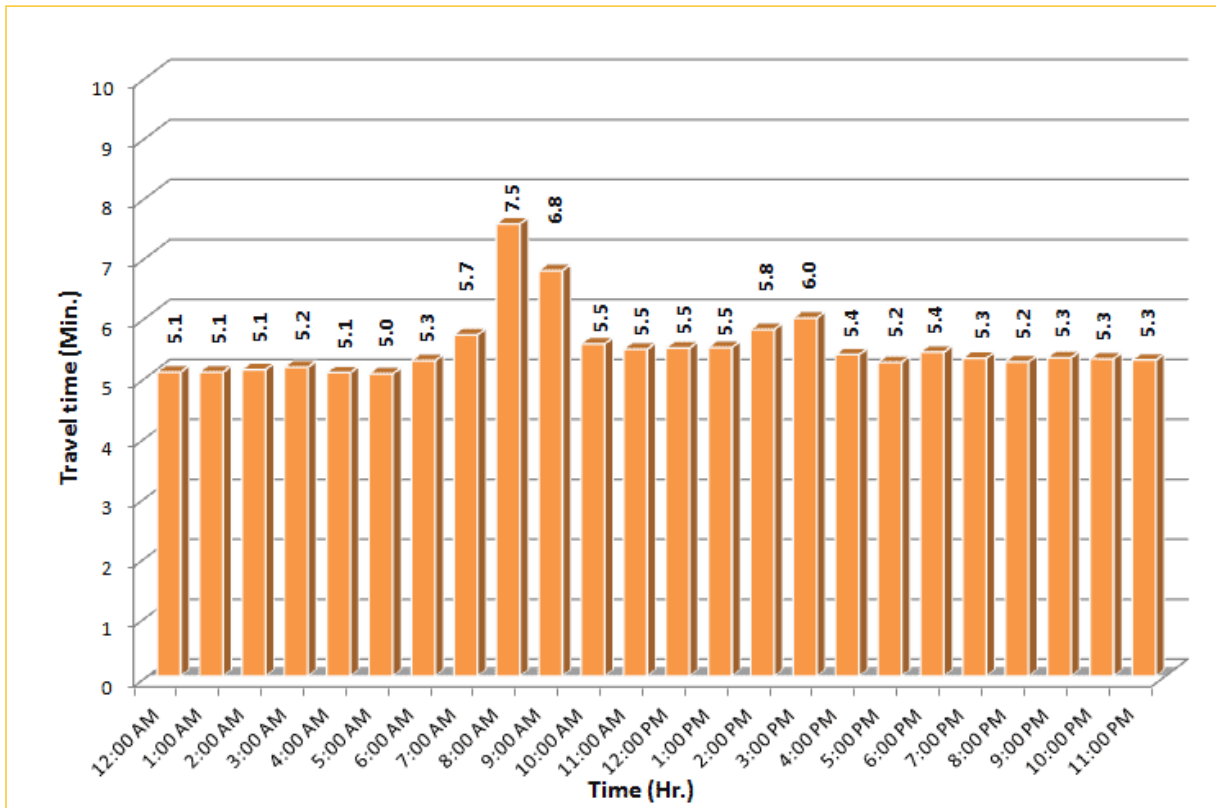



* Twelve-month average from October 1st, 2014 to September 30th, 2015. Excludes express lanes.

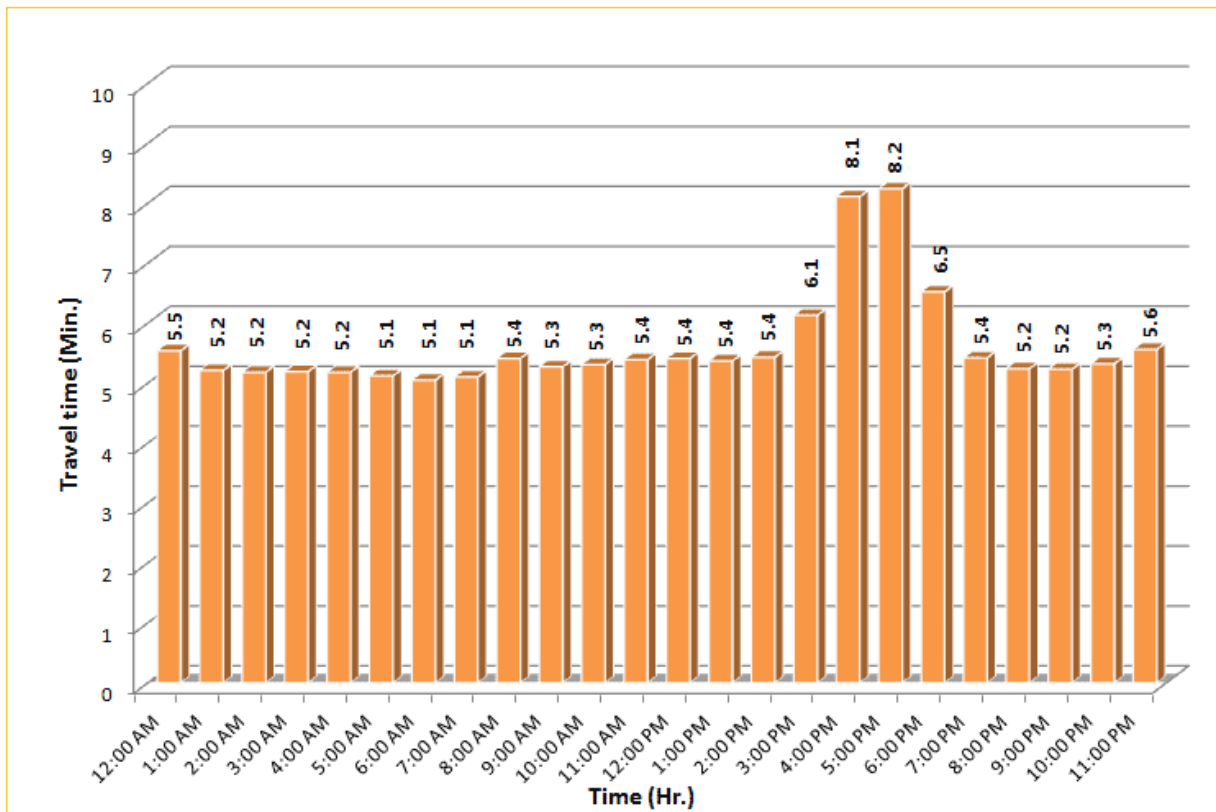
TRAVEL TIME RELIABILITY REPORT

Weekdays Travel Times by Time of Day*

I-195 Eastbound: 4.9 Miles
From: West of North Miami Avenue
To: West of Alton Road



I-195 Westbound: 4.9 Miles
From: West of Alton Road
To: West of North Miami Avenue

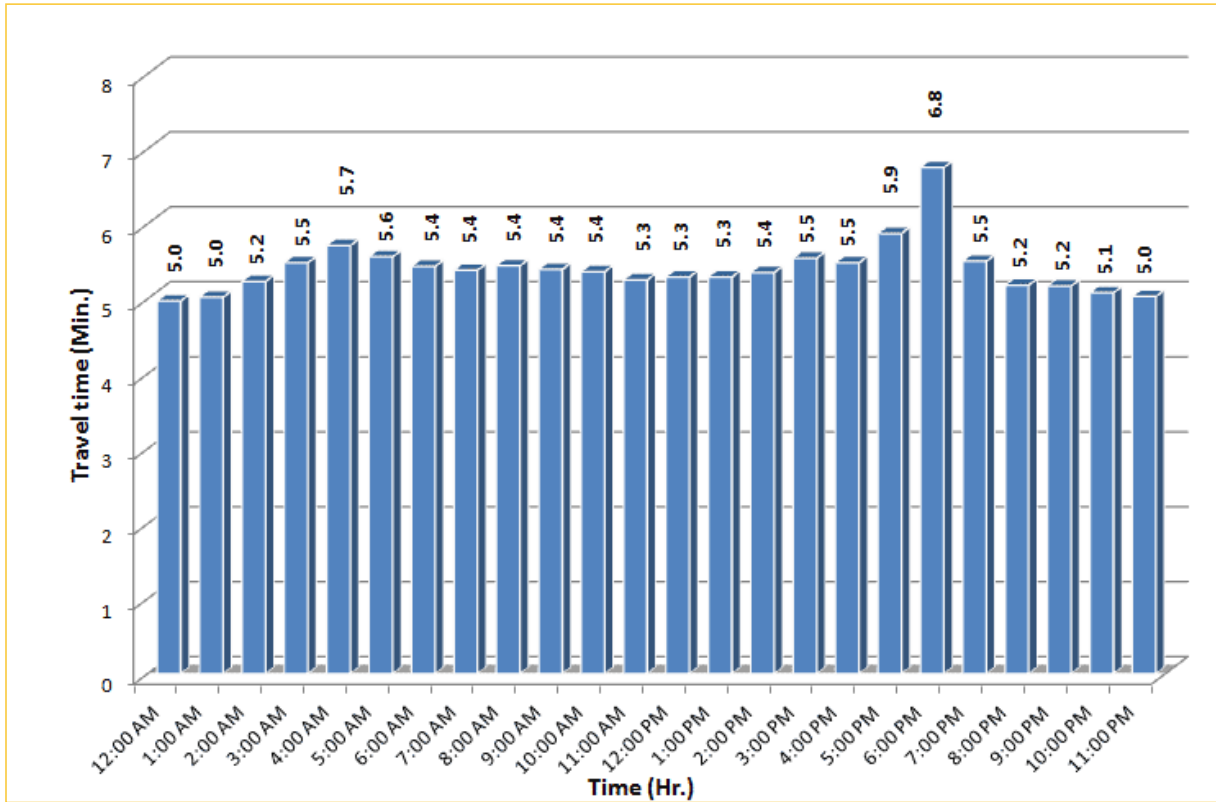


* Twelve-month average from October 1st, 2014 to September 30th, 2015.

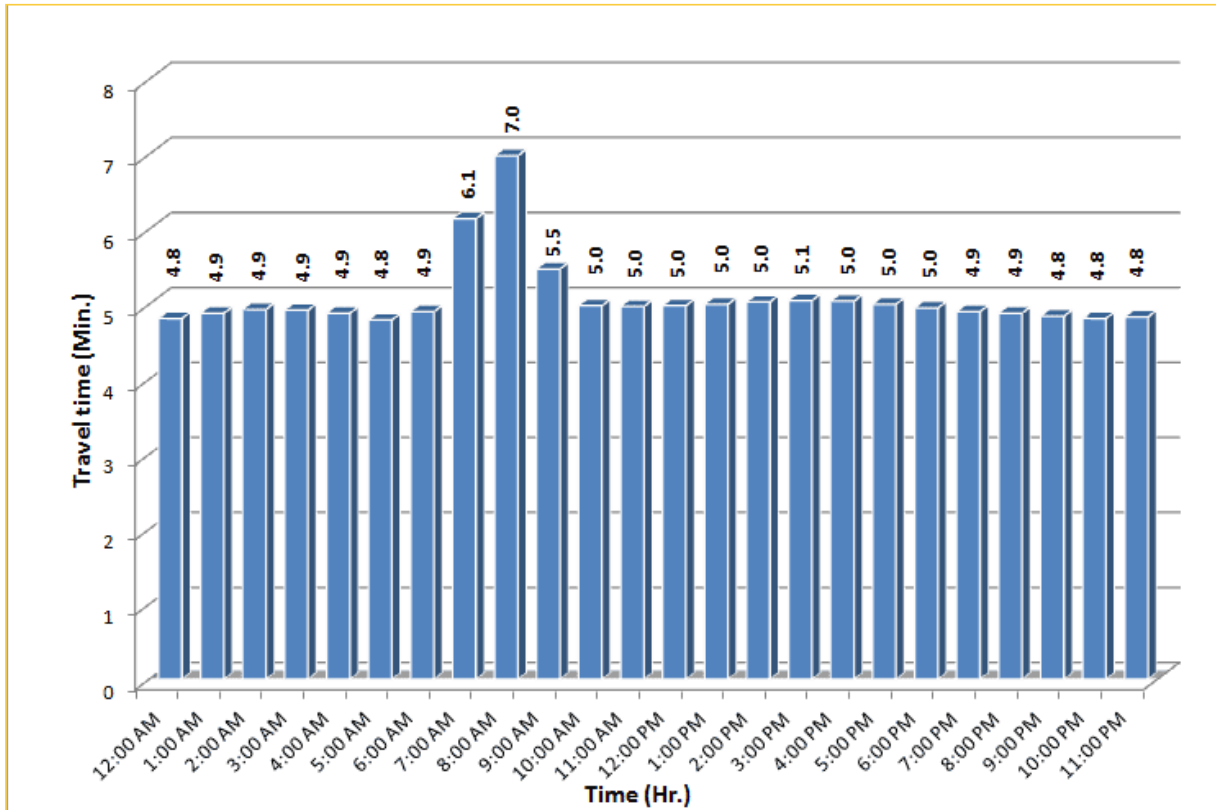
TRAVEL TIME RELIABILITY REPORT

Weekdays Travel Times by Time of Day*

I-75 Northbound: 5.4 Miles
From: West of SR 826
To: North of Florida's Turnpike



I-75 Southbound: 5.4 Miles
From: North of Florida's Turnpike
To: West of SR 826


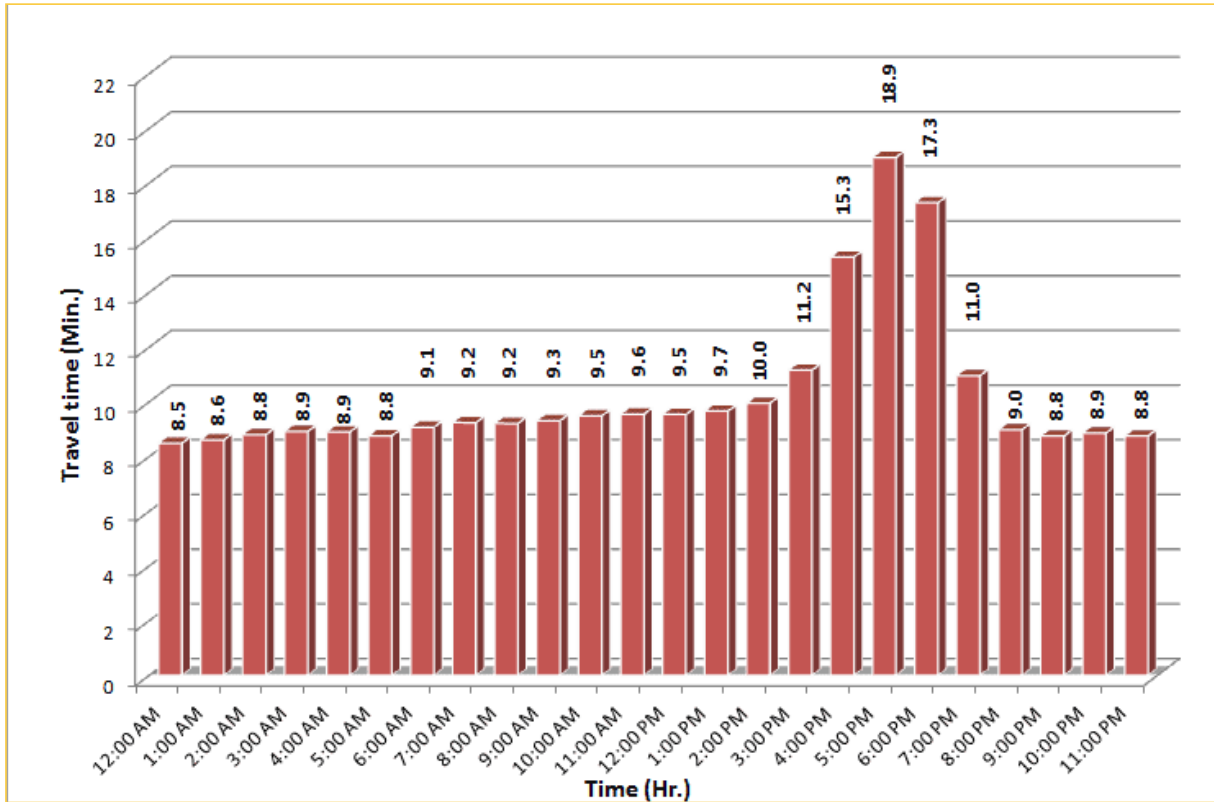


* Twelve-month average from October 1st, 2014 to September 30th, 2015.

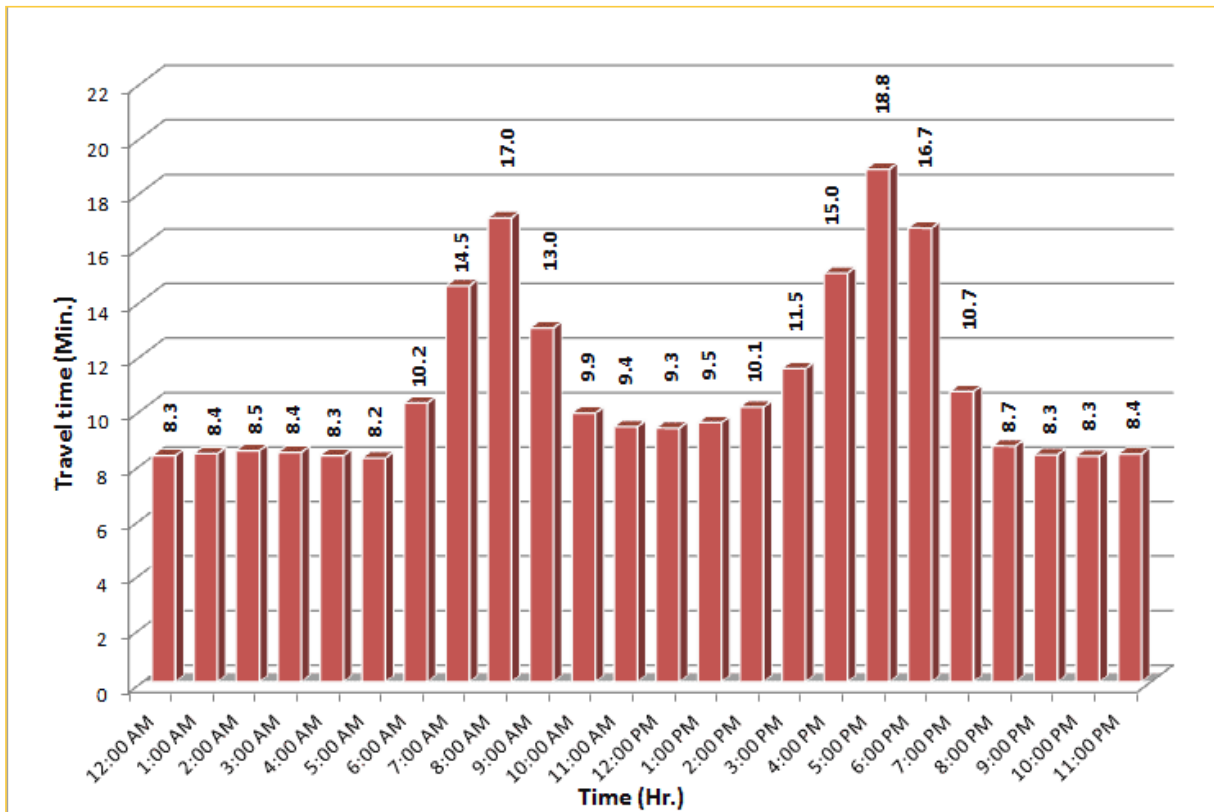
TRAVEL TIME RELIABILITY REPORT

Weekdays Travel Times by Time of Day*

SR 826 Northbound: 8.4 Miles
From: South of NW 25 Street
To: North of NW 154 Street

SR 826 Southbound: 8.4 Miles
From: North of NW 154 Street
To: South of NW 25 Street

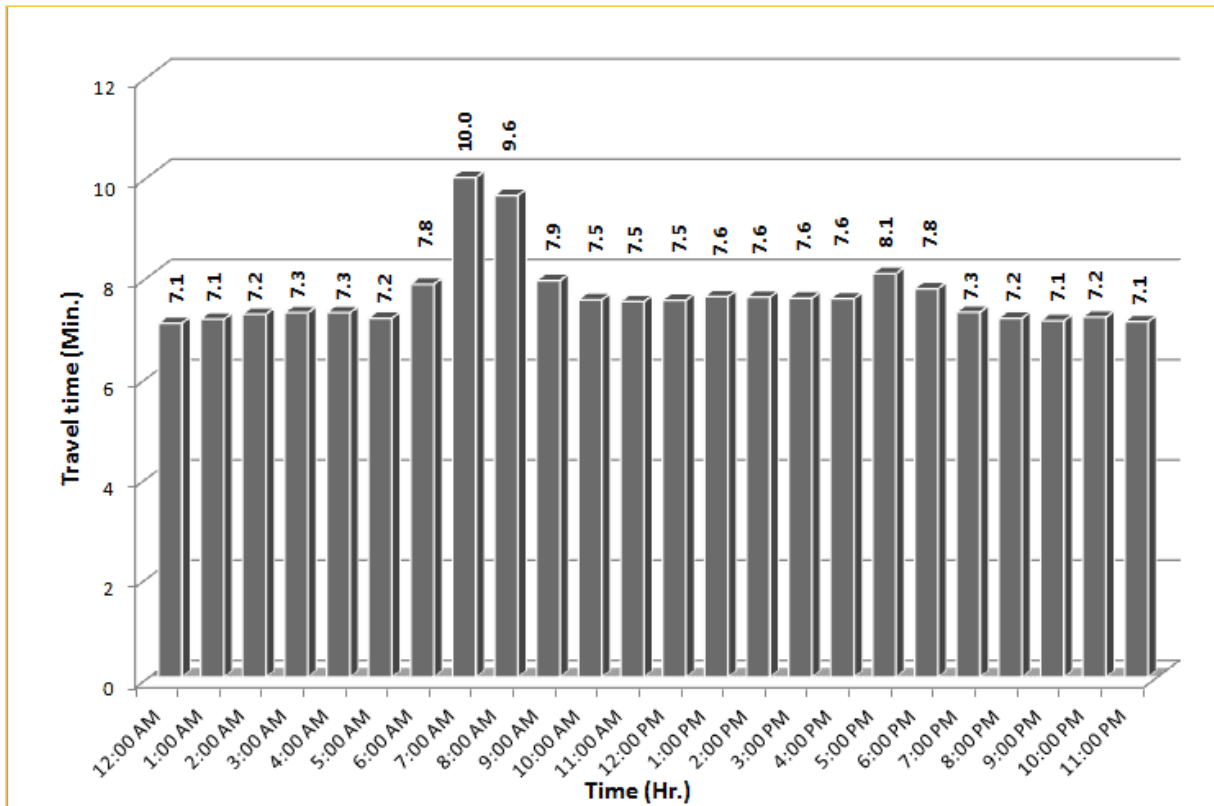



* Twelve-month average from October 1st, 2014 to September 30th, 2015.

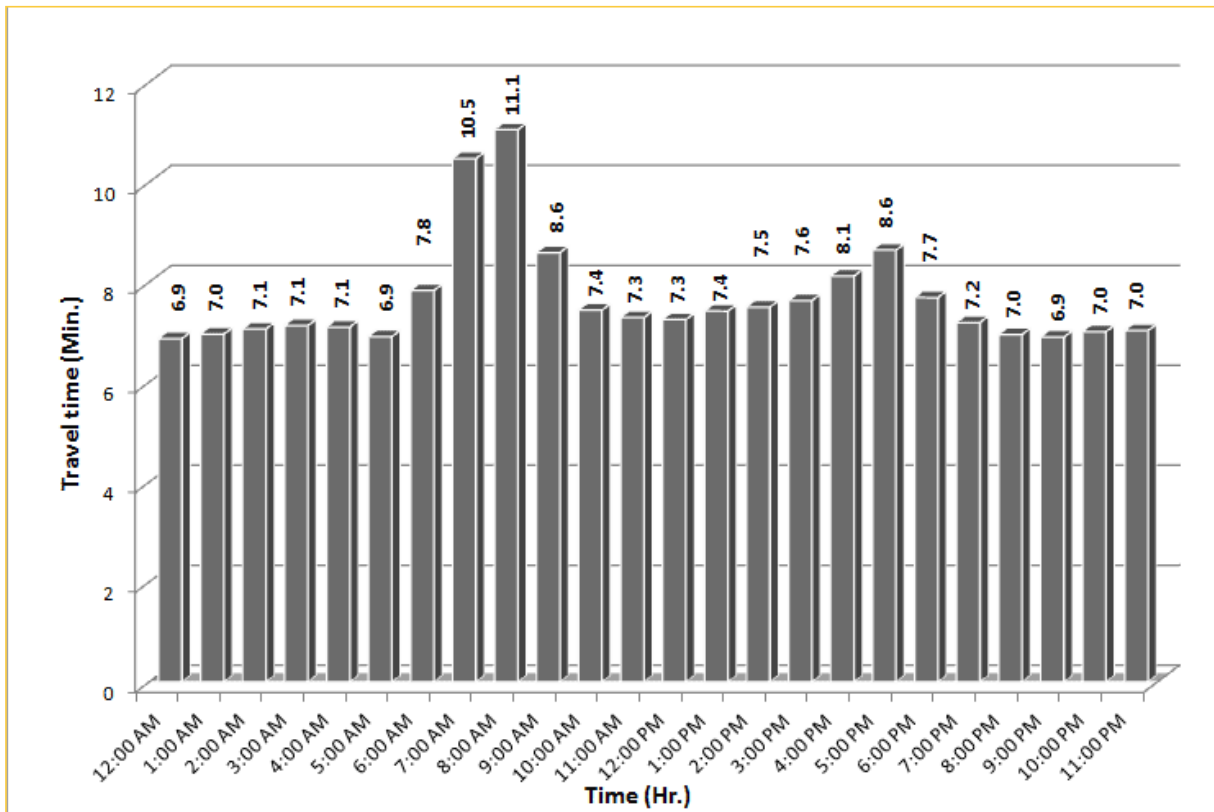
TRAVEL TIME RELIABILITY REPORT

Weekdays Travel Times by Time of Day*

SR 826 Eastbound: 7.1 Miles
From: West of NW 67 Avenue
To: East of NW 12 Avenue



SR 826 Westbound: 7.1 Miles
From: East of NW 12 Avenue
To: West of NW 67 Avenue

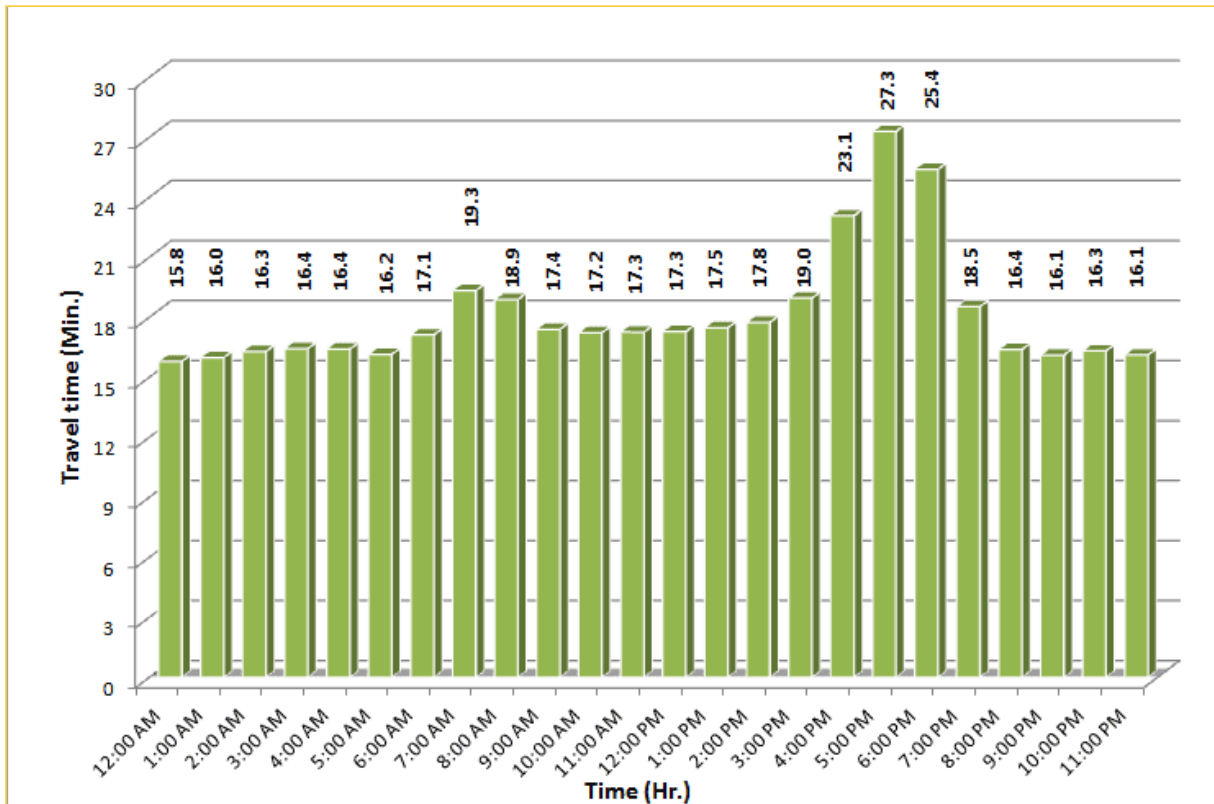


* Twelve-month average from October 1st, 2014 to September 30th, 2015.

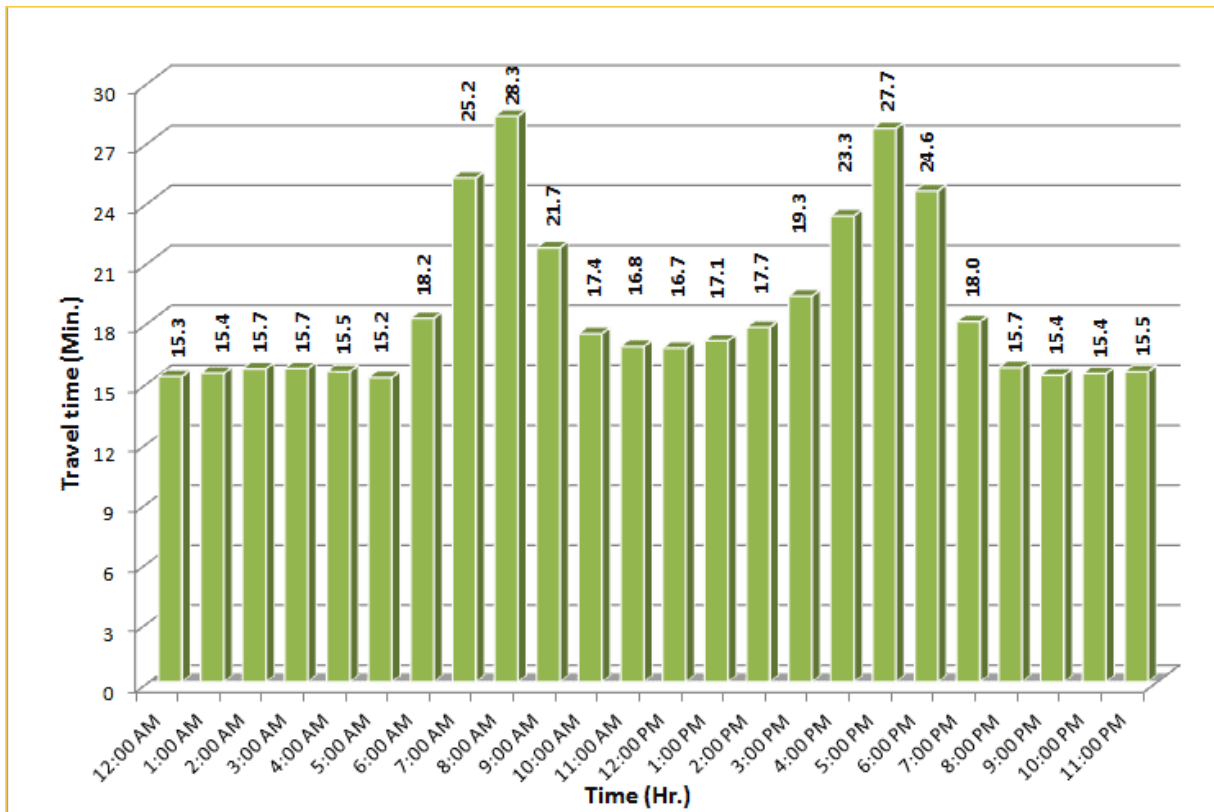
TRAVEL TIME RELIABILITY REPORT

Weekdays Travel Times by Time of Day*

SR 826 Northbound/Eastbound : 15.6 Miles
From: South of NW 25 Street
To: East of NW 12 Avenue

SR 826 Southbound/Westbound: 15.6 Miles
From: East of NW 12 Avenue
To: South of NW 25 Street

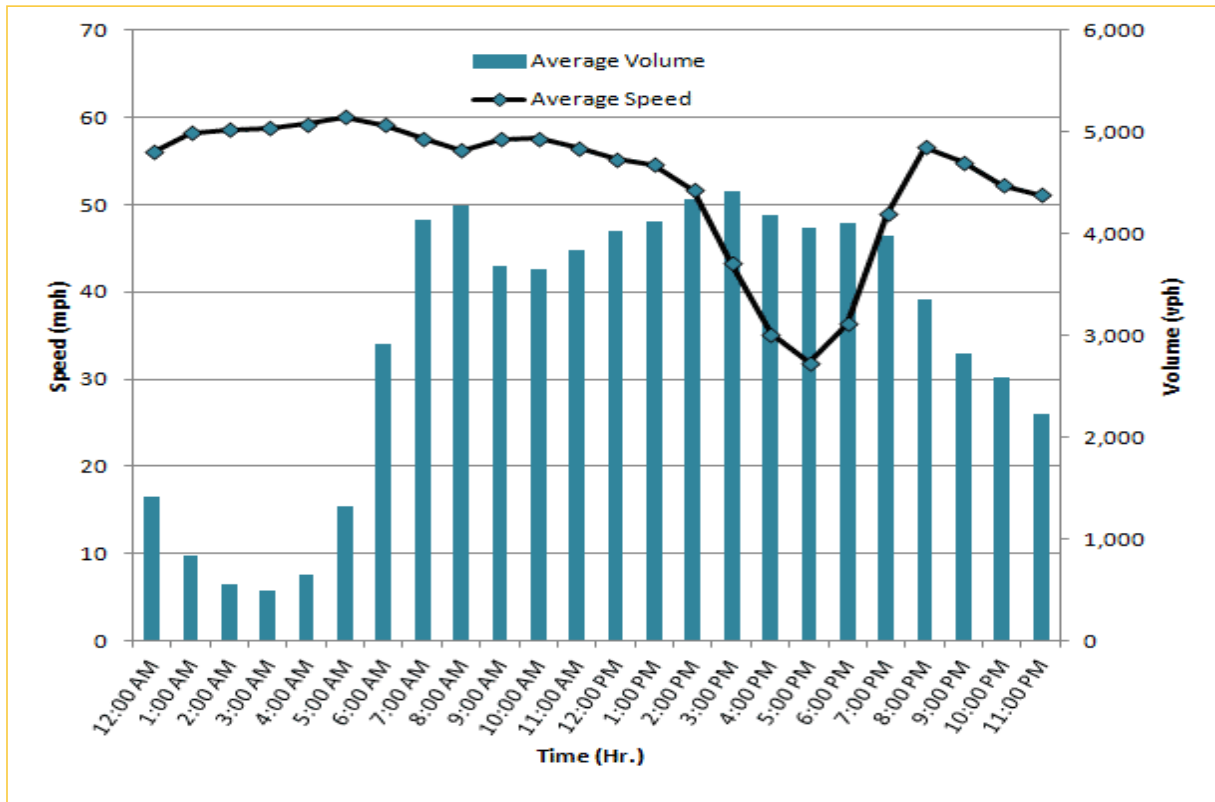



* Twelve-month average from October 1st, 2014 to September 30th, 2015.

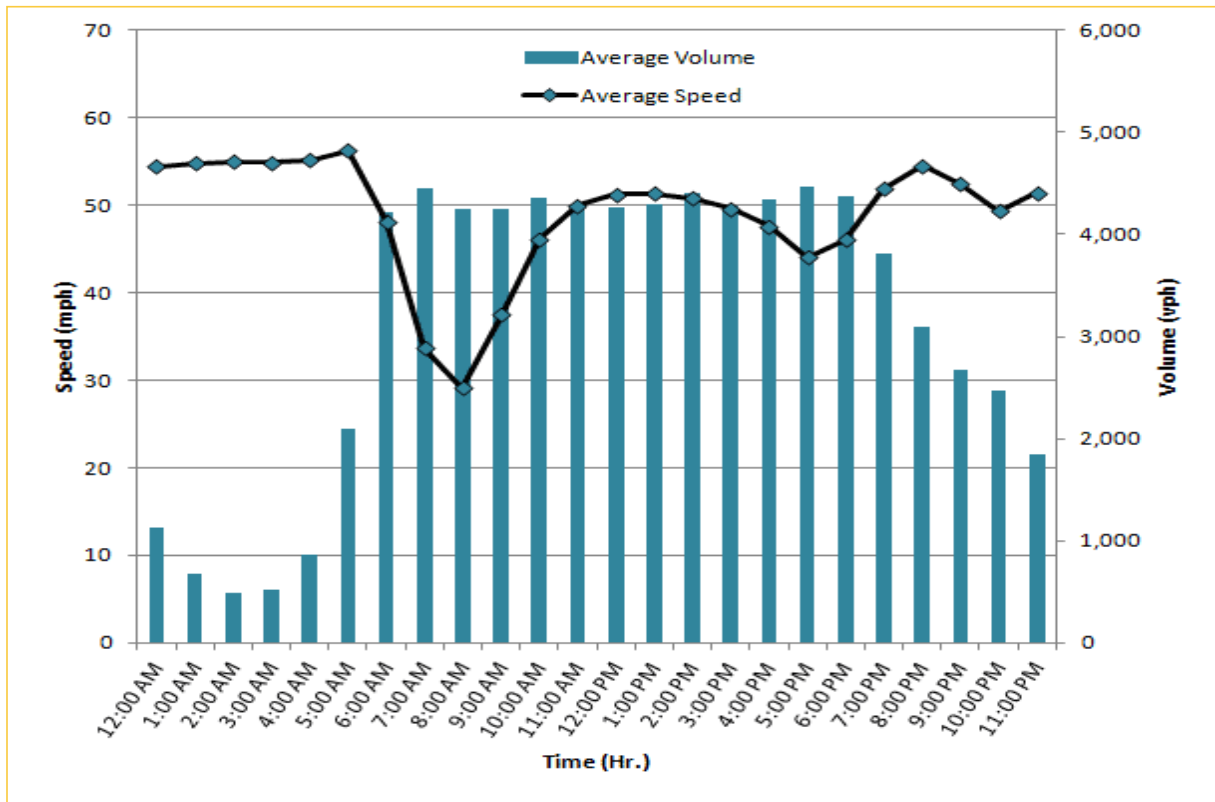
TRAVEL TIME RELIABILITY REPORT

Weekdays Speeds and Volumes by Time of Day*

I-95 Northbound: 17.3 Miles
From: US-1
To: Miami-Dade / Broward County Line

I-95 Southbound: 17.3 Miles
From: Miami-Dade / Broward County Line
To: US-1

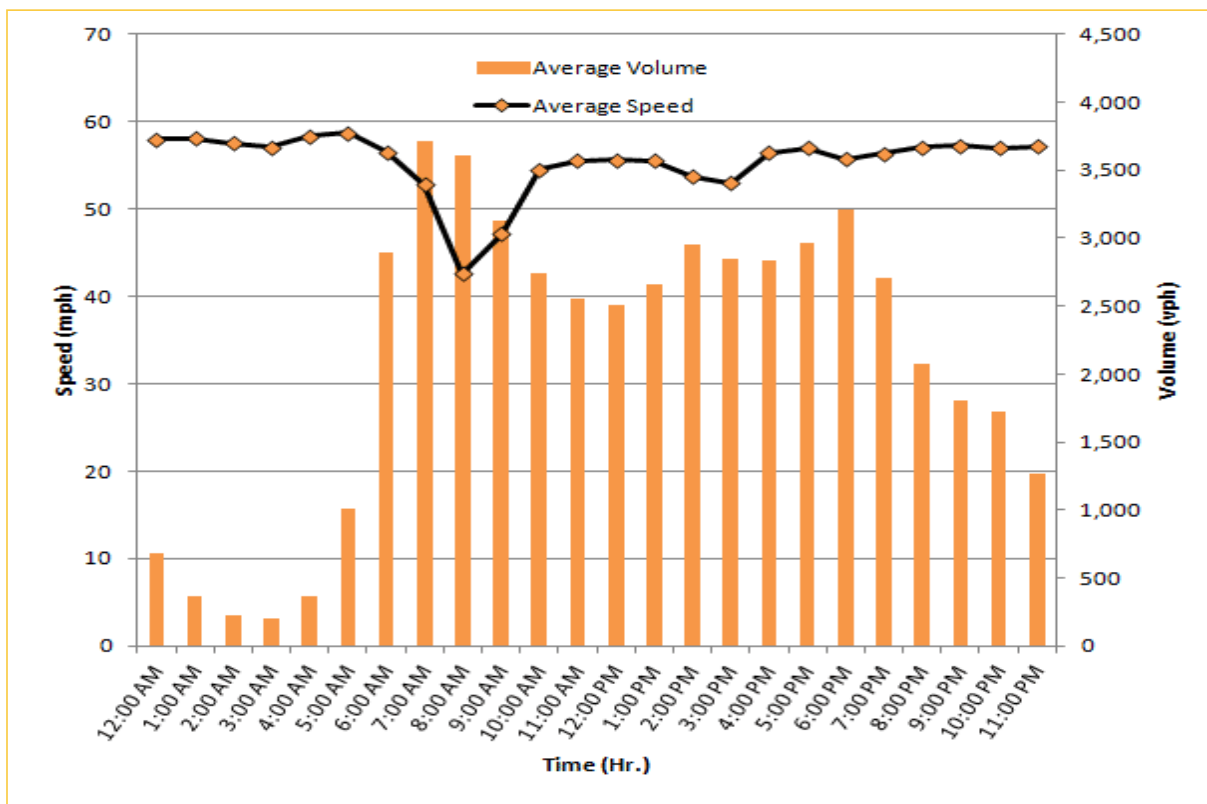



* Twelve-month average from October 1st, 2014 to September 30th, 2015. Excludes express lanes.

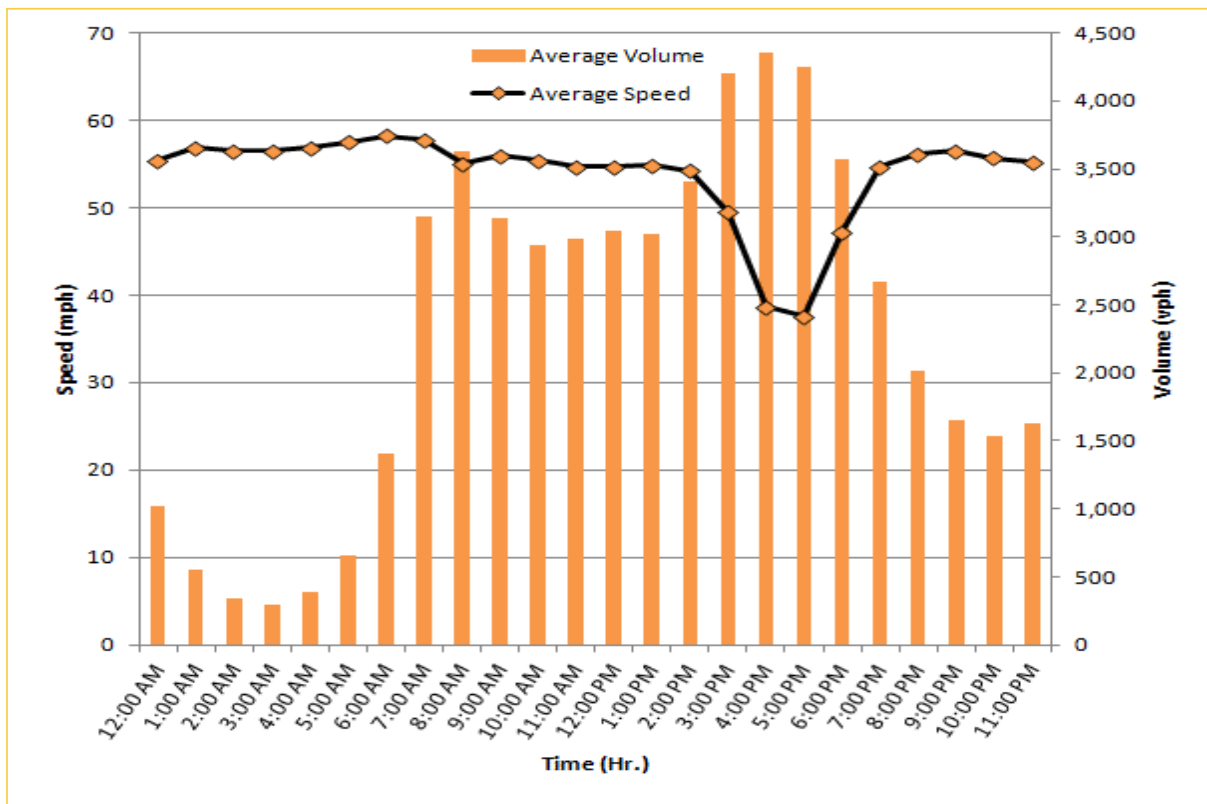
TRAVEL TIME RELIABILITY REPORT

Weekdays Speeds and Volumes by Time of Day*

I-195 Eastbound: 4.9 Miles
From: West of North Miami Avenue
To: West of Alton Road



I-195 Westbound: 4.9 Miles
From: West of Alton Road
To: West of North Miami Avenue


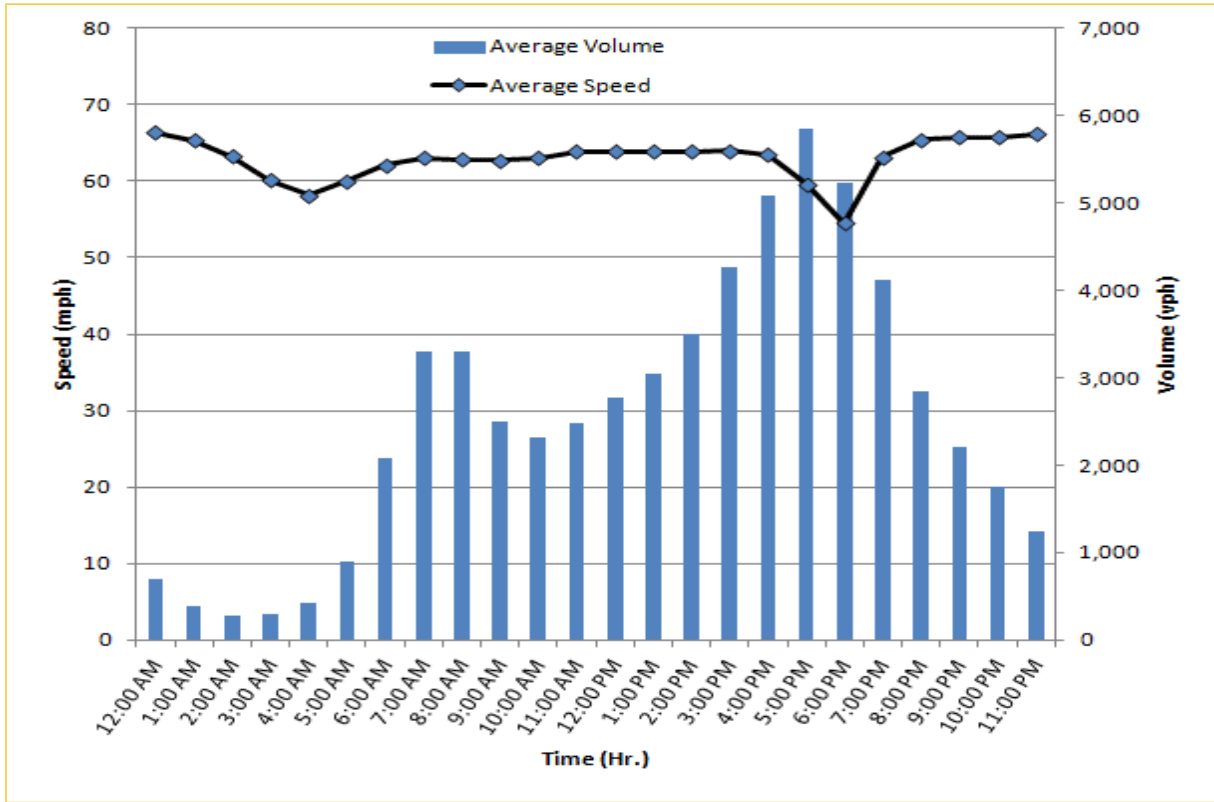


* Twelve-month average from October 1st, 2014 to September 30th, 2015.

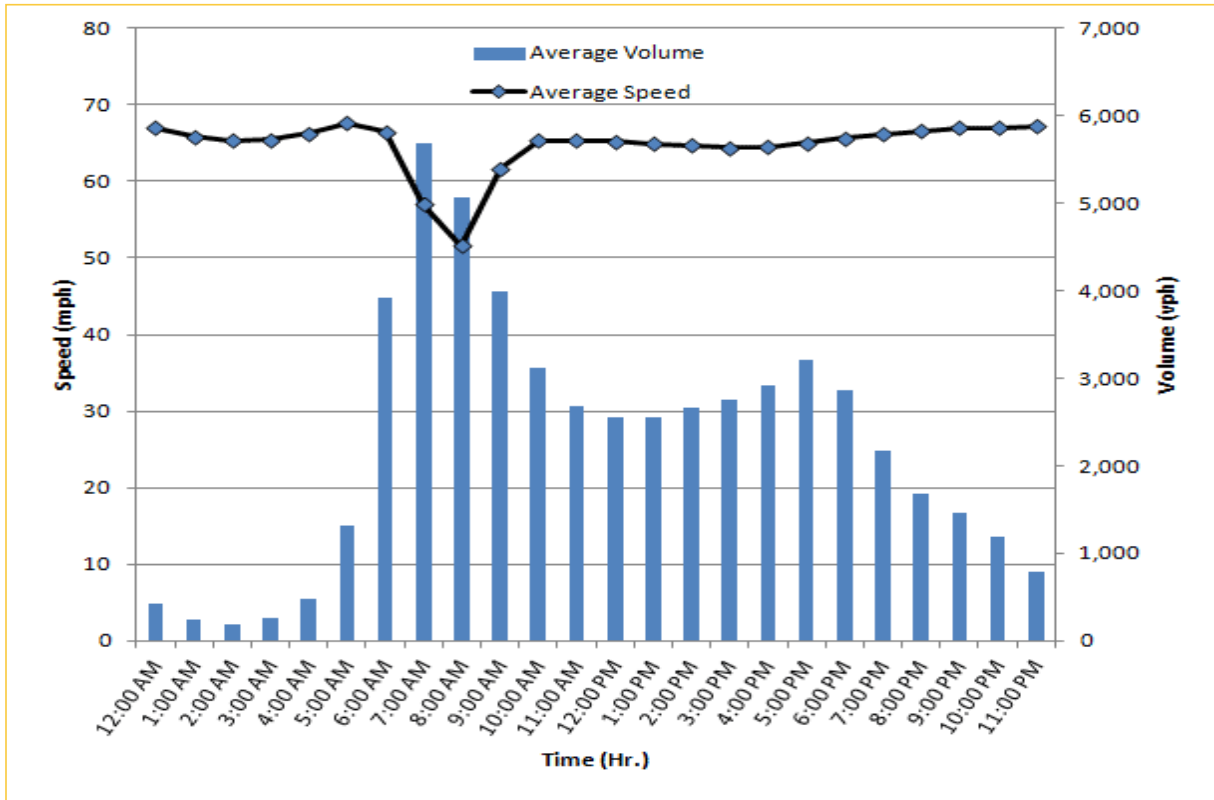
TRAVEL TIME RELIABILITY REPORT

Weekdays Speeds and Volumes by Time of Day*

I-75 Northbound: 5.4 Miles
From: West of SR 826
To: North of Florida's Turnpike

I-75 Southbound: 5.4 Miles
From: North of Florida's Turnpike
To: West of SR 826

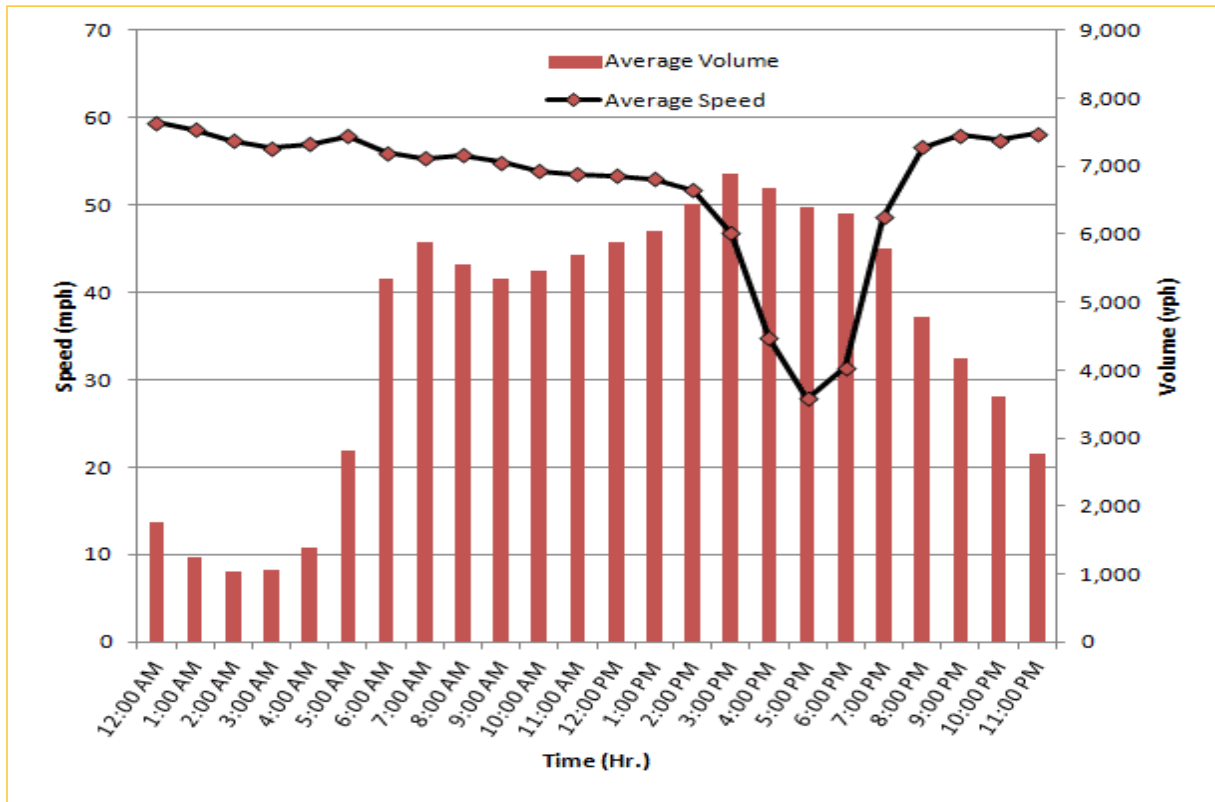



* Twelve-month average from October 1st, 2014 to September 30th, 2015.

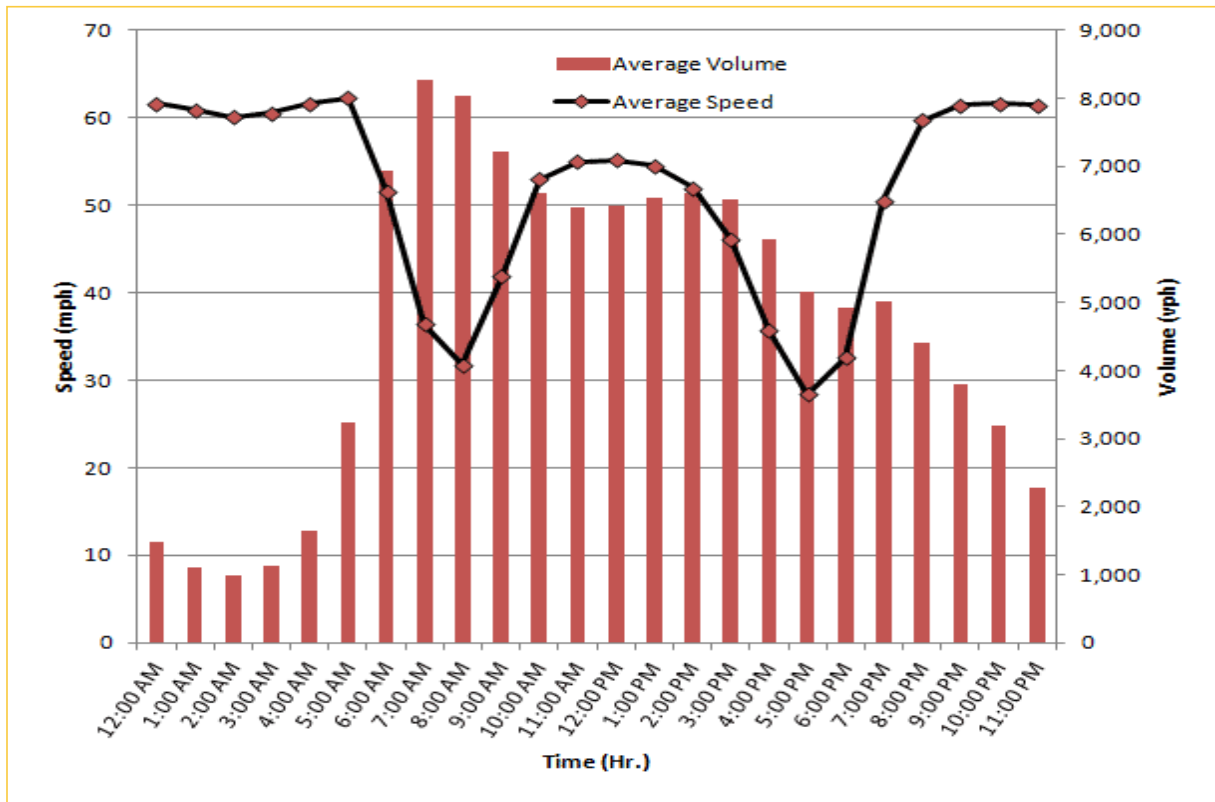
TRAVEL TIME RELIABILITY REPORT

Weekdays Speeds and Volumes by Time of Day*

SR 826 Northbound: 8.4 Miles
From: South of NW 25 Street
To: North of NW 154 Street



SR 826 Southbound: 8.4 Miles
From: North of NW 154 Street
To: South of NW 25 Street

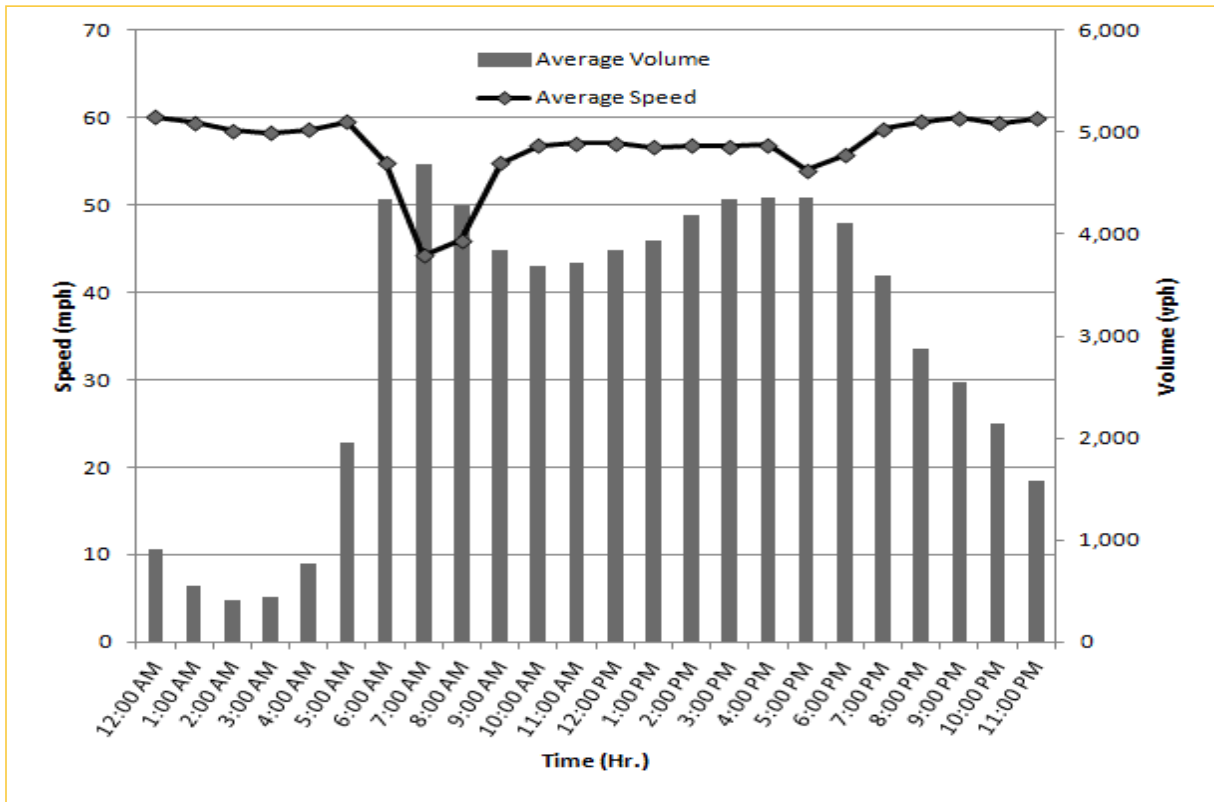


* Twelve-month average from October 1st, 2014 to September 30th, 2015.

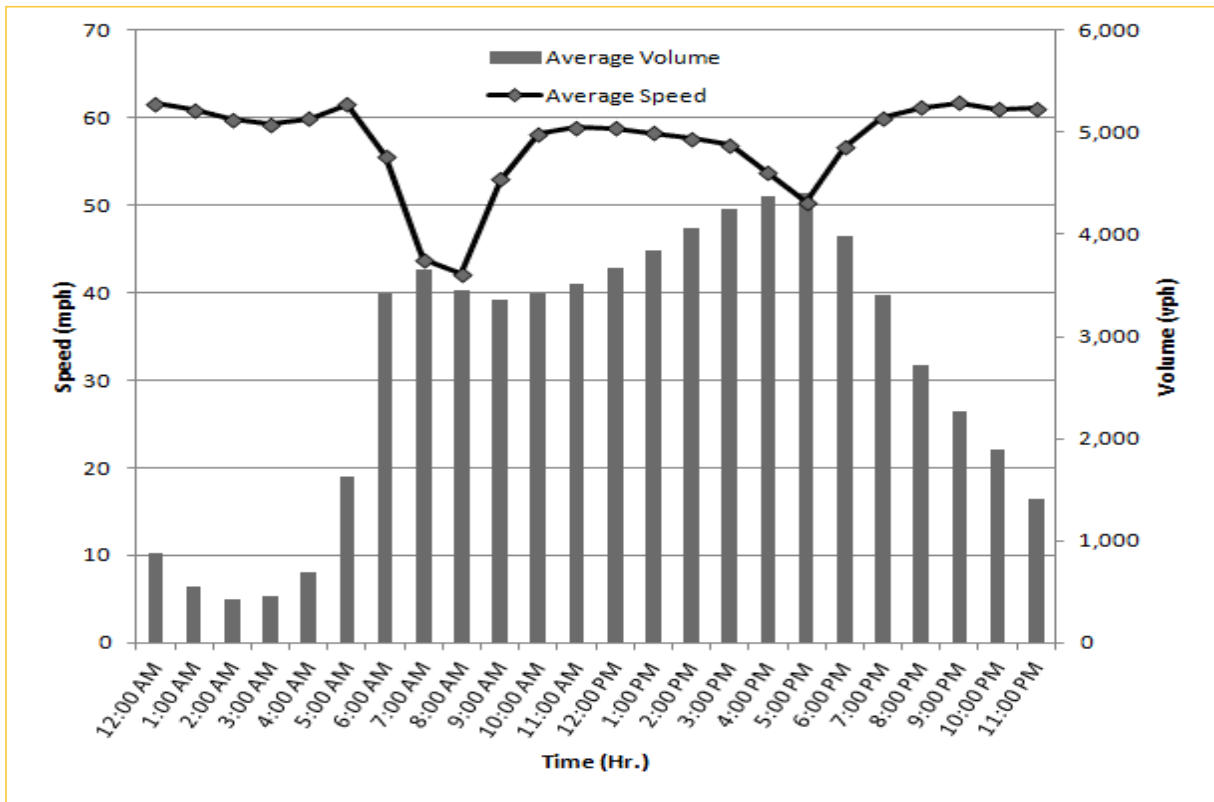
TRAVEL TIME RELIABILITY REPORT

Weekdays Speeds and Volumes by Time of Day*

SR 826 Eastbound: 7.1 Miles
From: West of NW 67 Avenue
To: East of NW 12 Avenue

SR 826 Westbound: 7.1 Miles
From: East of NW 12 Avenue
To: West of NW 67 Avenue

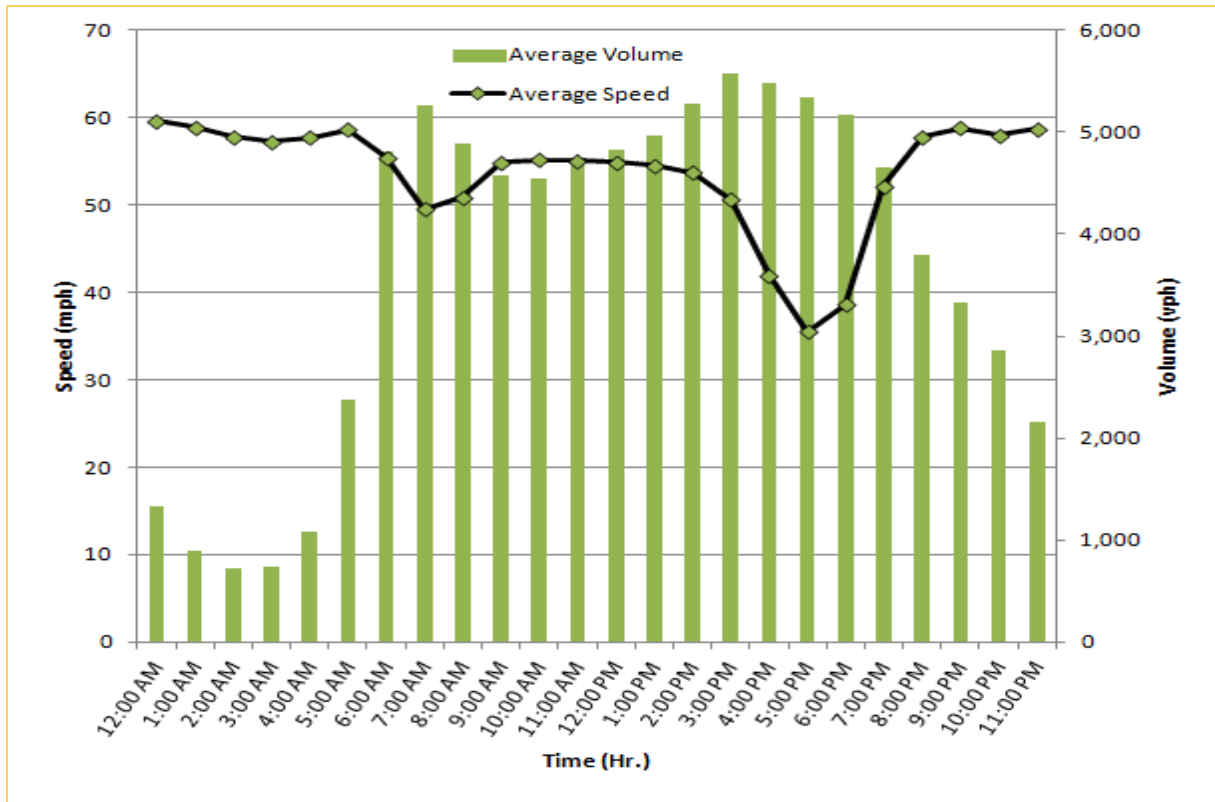



* Twelve-month average from October 1st, 2014 to September 30th, 2015.

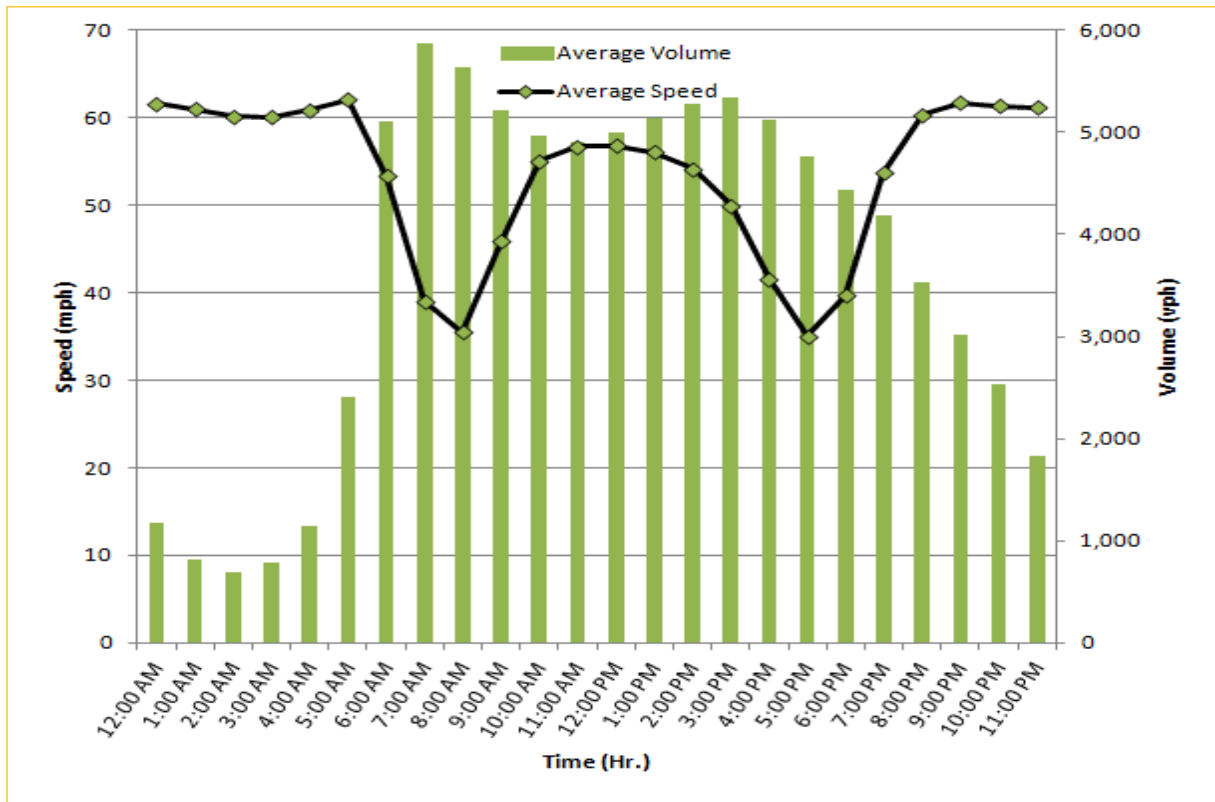
TRAVEL TIME RELIABILITY REPORT

Weekdays Speeds and Volumes by Time of Day*

SR 826 Northbound/Eastbound : 15.6 Miles
From: South of NW 25 Street
To: East of NW 12 Avenue

SR 826 Southbound/Westbound: 15.6 Miles
From: East of NW 12 Avenue
To: South of NW 25 Street

* Twelve-month average from October 1st, 2014 to September 30th, 2015.