

## TRAVEL TIME RELIABILITY REPORT

### Travel Time Index by Roadway\*

Time	I-95		I-195		I-75		SR 826					
	NB	SB	EB	WB	NB	SB	NB	EB	NB/EB	SB	WB	SB/WB
0:00	1.09	1.10	1.03	1.13	1.03	0.99	1.00	0.96	0.99	1.02	0.97	0.98
1:00	1.04	1.09	1.03	1.06	1.04	1.01	1.02	0.98	1.00	1.03	0.98	1.00
2:00	1.03	1.09	1.04	1.05	1.08	1.02	1.04	0.99	1.02	1.04	1.00	1.01
3:00	1.02	1.09	1.05	1.06	1.13	1.02	1.05	0.99	1.03	1.04	1.01	1.01
4:00	1.01	1.08	1.03	1.05	1.18	1.01	1.05	0.99	1.02	1.02	1.00	1.00
5:00	1.00	1.06	1.02	1.04	1.15	0.99	1.04	0.98	1.01	1.01	0.98	0.98
6:00	1.03	1.25	1.07	1.03	1.12	1.01	1.07	1.06	1.07	1.25	1.09	1.16
7:00	1.07	1.87	1.16	1.03	1.11	1.26	1.09	1.34	1.20	1.77	1.44	1.60
8:00	1.10	2.25	1.52	1.09	1.12	1.45	1.09	1.30	1.18	2.05	1.53	1.79
9:00	1.07	1.72	1.36	1.07	1.11	1.14	1.11	1.08	1.09	1.58	1.20	1.39
10:00	1.07	1.35	1.12	1.08	1.11	1.03	1.13	1.03	1.08	1.21	1.04	1.12
11:00	1.09	1.22	1.10	1.09	1.08	1.02	1.13	1.02	1.08	1.15	1.03	1.08
12:00	1.11	1.18	1.11	1.10	1.09	1.03	1.13	1.03	1.08	1.14	1.02	1.07
13:00	1.11	1.18	1.11	1.09	1.09	1.03	1.14	1.04	1.09	1.17	1.05	1.10
14:00	1.18	1.19	1.17	1.10	1.10	1.03	1.17	1.04	1.11	1.23	1.05	1.14
15:00	1.43	1.22	1.21	1.23	1.14	1.04	1.30	1.03	1.17	1.41	1.07	1.24
16:00	1.75	1.27	1.09	1.62	1.13	1.04	1.76	1.03	1.41	1.83	1.13	1.49
17:00	1.93	1.38	1.06	1.67	1.20	1.03	2.19	1.09	1.67	2.30	1.21	1.77
18:00	1.71	1.32	1.10	1.32	1.39	1.02	2.00	1.06	1.56	2.03	1.09	1.57
19:00	1.27	1.16	1.08	1.10	1.13	1.01	1.27	0.99	1.14	1.29	1.01	1.15
20:00	1.07	1.10	1.06	1.06	1.07	1.01	1.06	0.98	1.02	1.06	0.98	1.01
21:00	1.10	1.15	1.08	1.06	1.07	1.00	1.04	0.97	1.01	1.03	0.97	0.99
22:00	1.16	1.25	1.08	1.08	1.05	0.99	1.05	0.98	1.02	1.02	0.99	0.99
23:00	1.20	1.19	1.07	1.12	1.04	1.00	1.03	0.97	1.01	1.02	0.99	1.00
<b>FFS**</b>	<b>60 mph</b>	<b>60 mph</b>	<b>60 mph</b>	<b>60 mph</b>	<b>67 mph</b>	<b>67 mph</b>	<b>60 mph</b>	<b>58 mph</b>	<b>59 mph</b>	<b>63 mph</b>	<b>60 mph</b>	<b>61 mph</b>

Maximum Travel Time Index. \*\* FFS: Free Flow Speed

**Travel Time Index (TTI)** is a measure of average conditions that indicates how much longer, **on average**, travel times are during congestion compared to during light traffic.

**Real World Example:** A TTI of 1.60 means that for a trip that usually takes 10 minutes in light traffic, a traveler should budget for an additional 6 minutes **on average**.

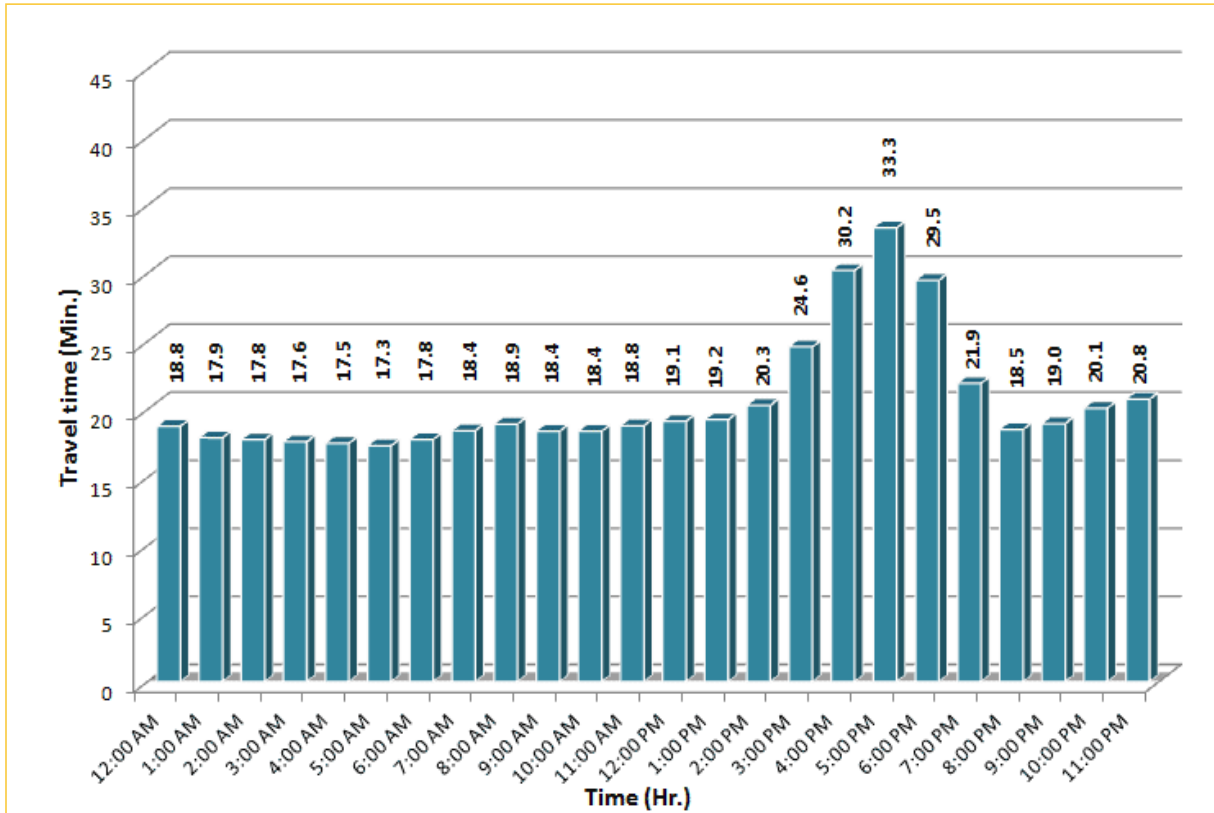


\* Twelve-month average from September 1<sup>st</sup>, 2014 to August 31<sup>st</sup>, 2015.

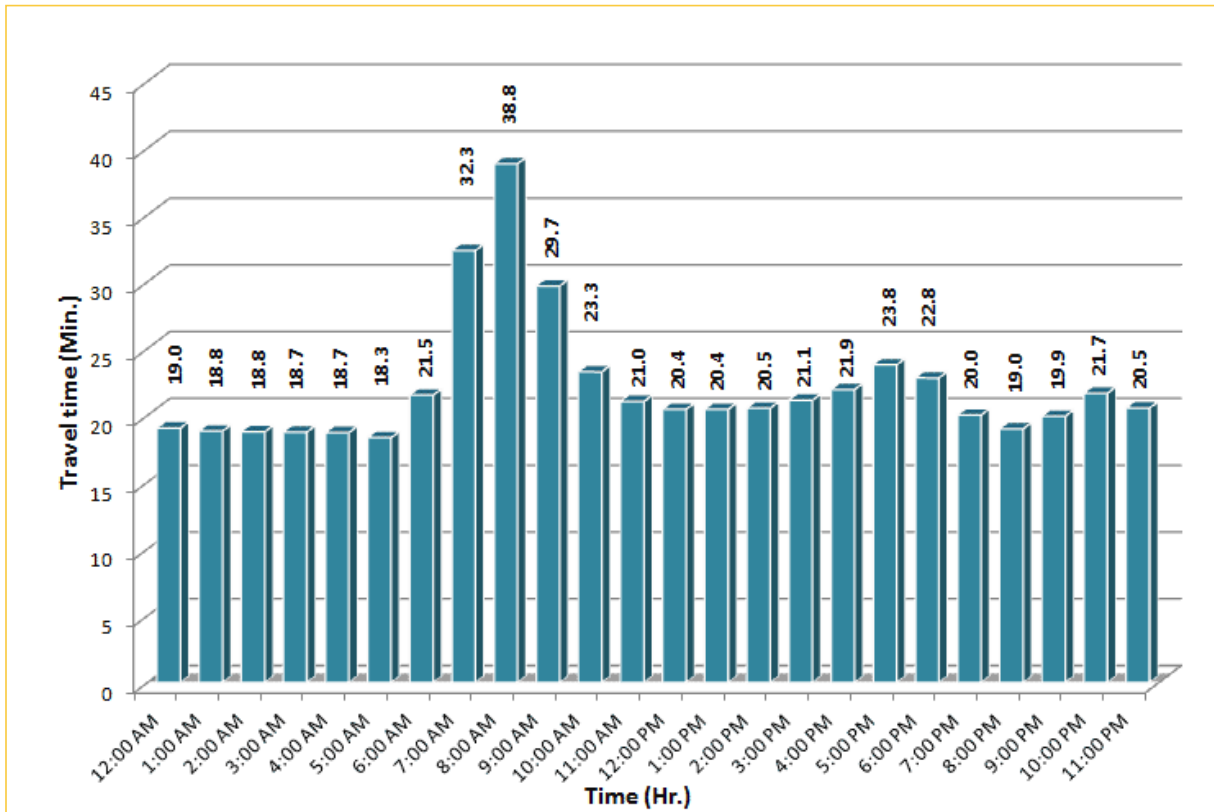
# TRAVEL TIME RELIABILITY REPORT

## Weekdays Travel Times by Time of Day\*

**I-95 Northbound: 17.3 Miles**  
From: US-1  
To: Miami-Dade / Broward County Line

**I-95 Southbound: 17.3 Miles**  
From: Miami-Dade / Broward County Line  
To: US-1

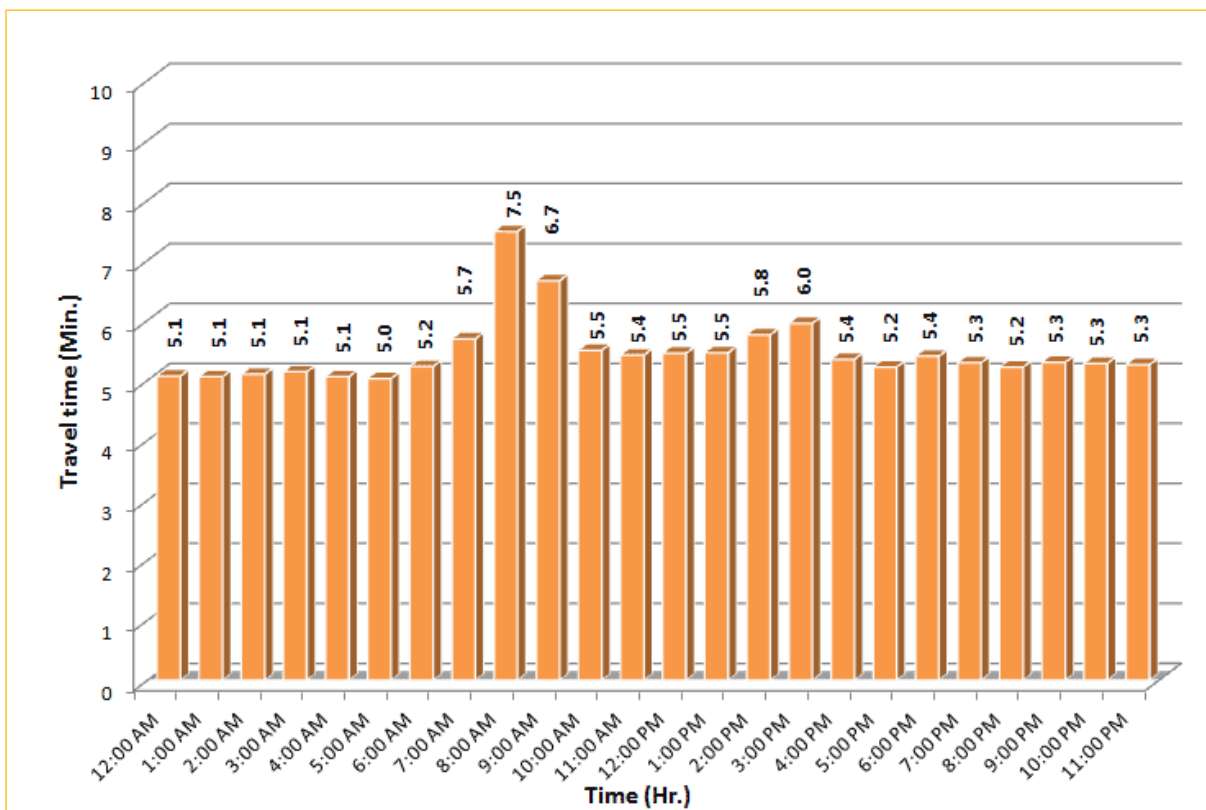



\* Twelve-month average from September 1<sup>st</sup>, 2014 to August 31<sup>st</sup>, 2015. Excludes express lanes.

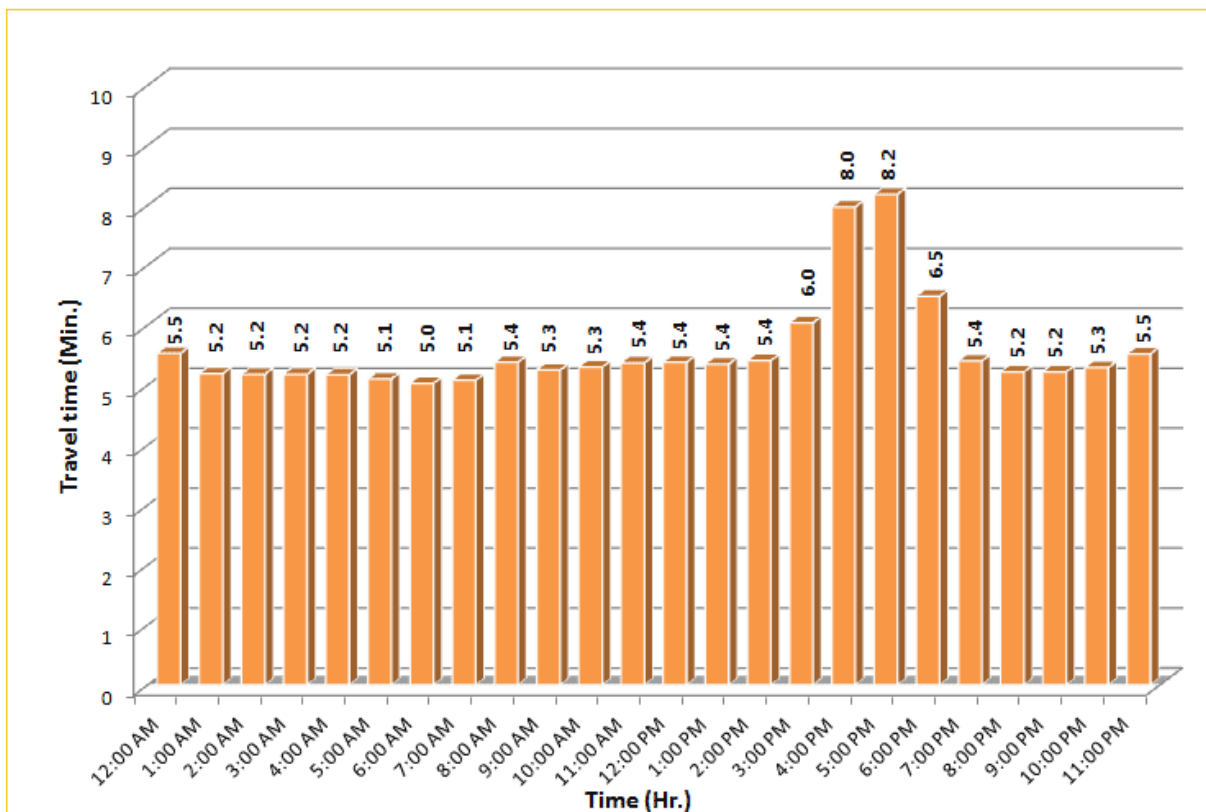
# TRAVEL TIME RELIABILITY REPORT

## Weekdays Travel Times by Time of Day\*

**I-195 Eastbound: 4.9 Miles**  
From: West of North Miami Avenue  
To: West of Alton Road



**I-195 Westbound: 4.9 Miles**  
From: West of Alton Road  
To: West of North Miami Avenue


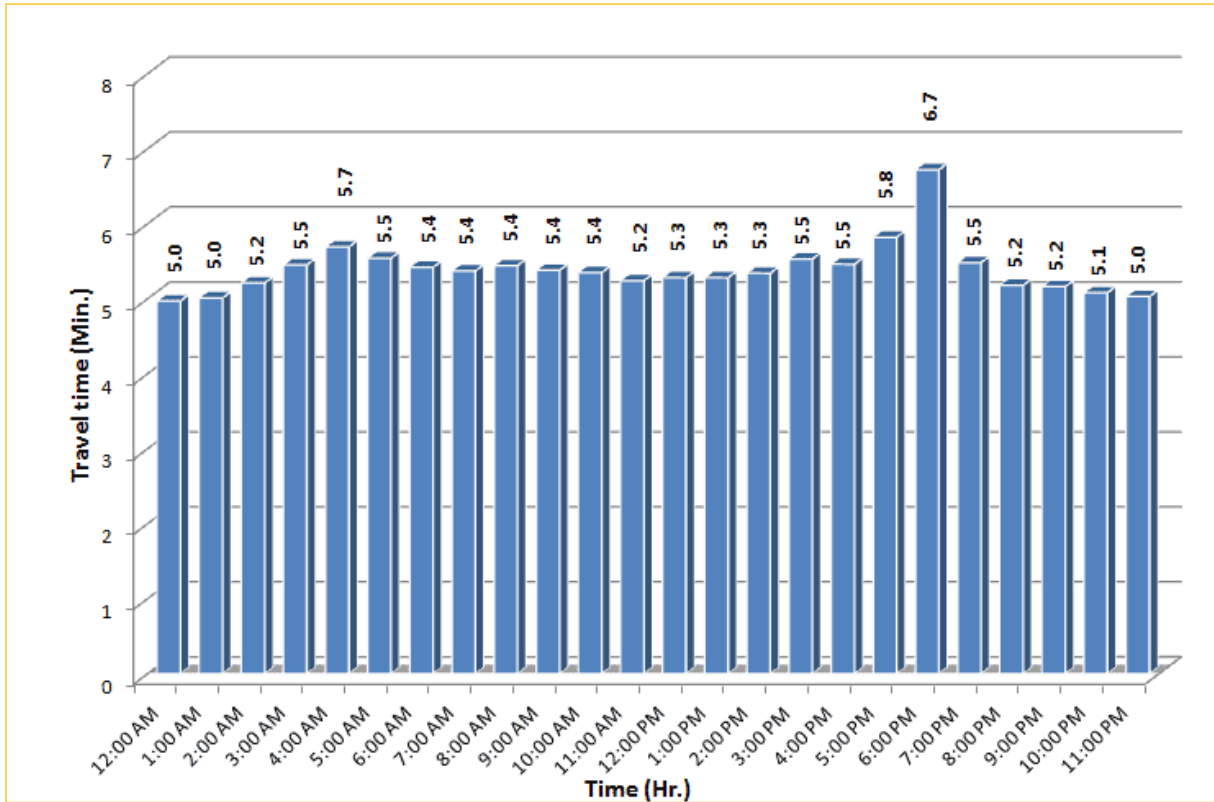


\* Twelve-month average from September 1<sup>st</sup>, 2014 to August 31<sup>st</sup>, 2015.

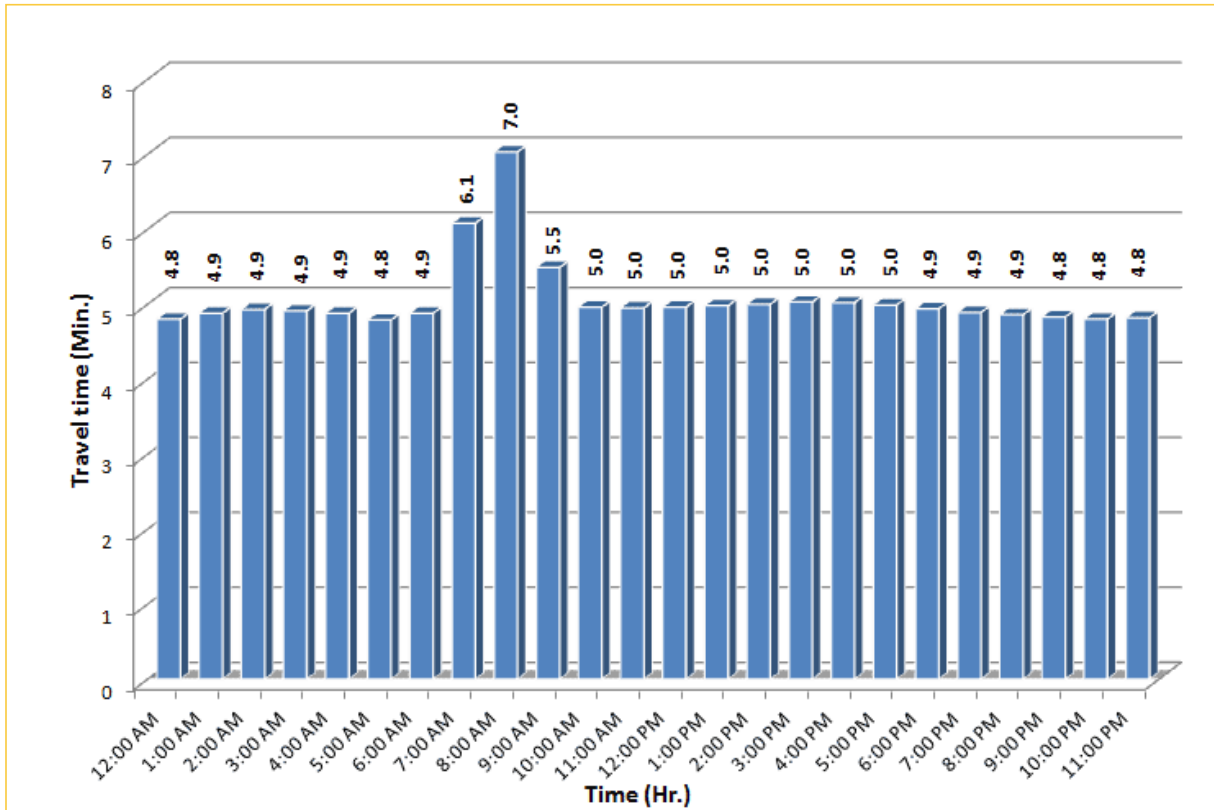
## TRAVEL TIME RELIABILITY REPORT

### Weekdays Travel Times by Time of Day\*

**I-75 Northbound: 5.4 Miles**  
From: West of SR 826  
To: North of Florida's Turnpike

**I-75 Southbound: 5.4 Miles**  
From: North of Florida's Turnpike  
To: West of SR 826


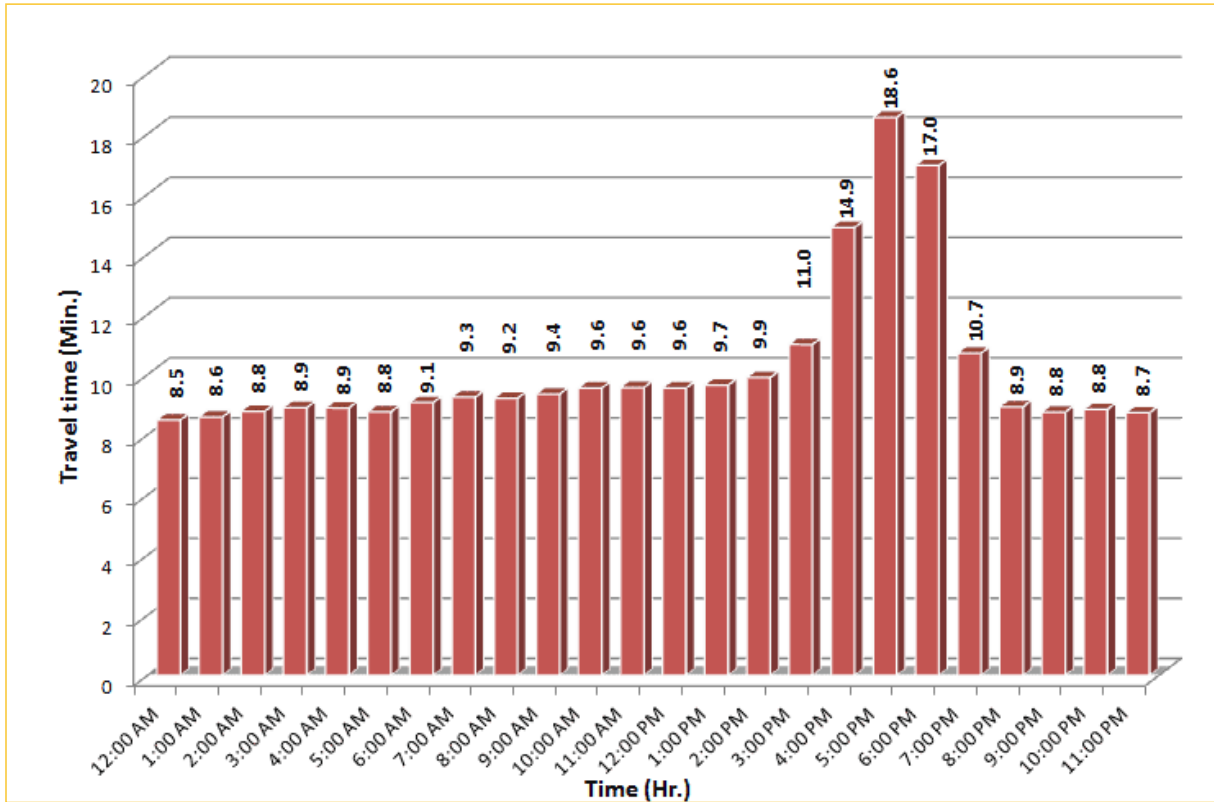



\* Twelve-month average from September 1<sup>st</sup>, 2014 to August 31<sup>st</sup>, 2015.

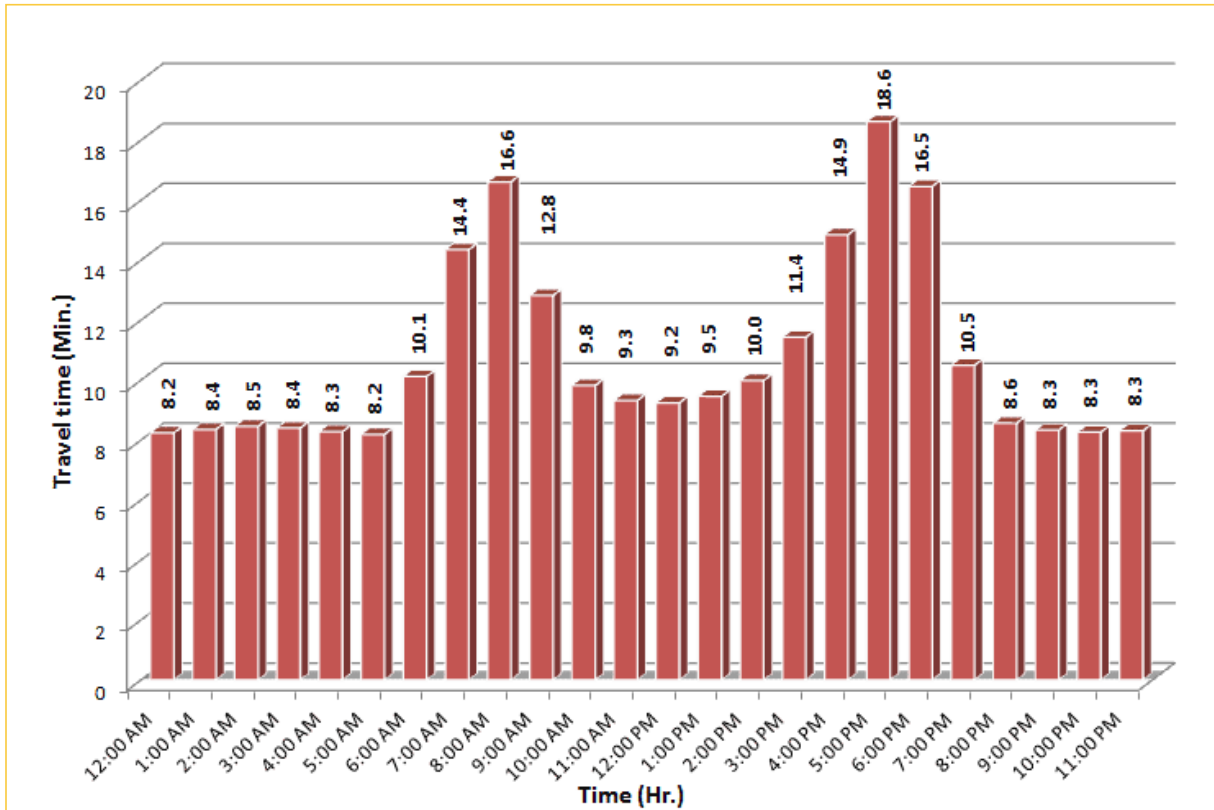
## TRAVEL TIME RELIABILITY REPORT

### Weekdays Travel Times by Time of Day\*

**SR 826 Northbound: 8.4 Miles**  
From: South of NW 25 Street  
To: North of NW 154 Street

**SR 826 Southbound: 8.4 Miles**  
From: North of NW 154 Street  
To: South of NW 25 Street

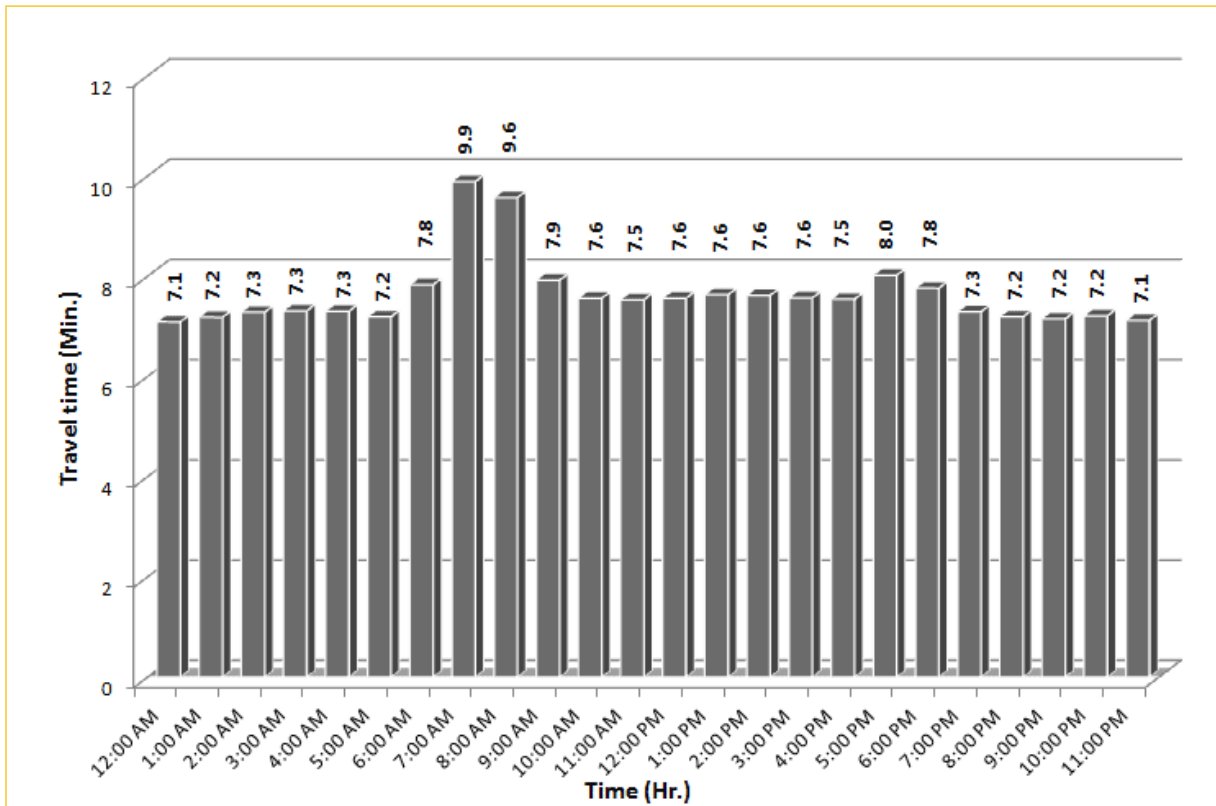



\* Twelve-month average from September 1<sup>st</sup>, 2014 to August 31<sup>st</sup>, 2015.

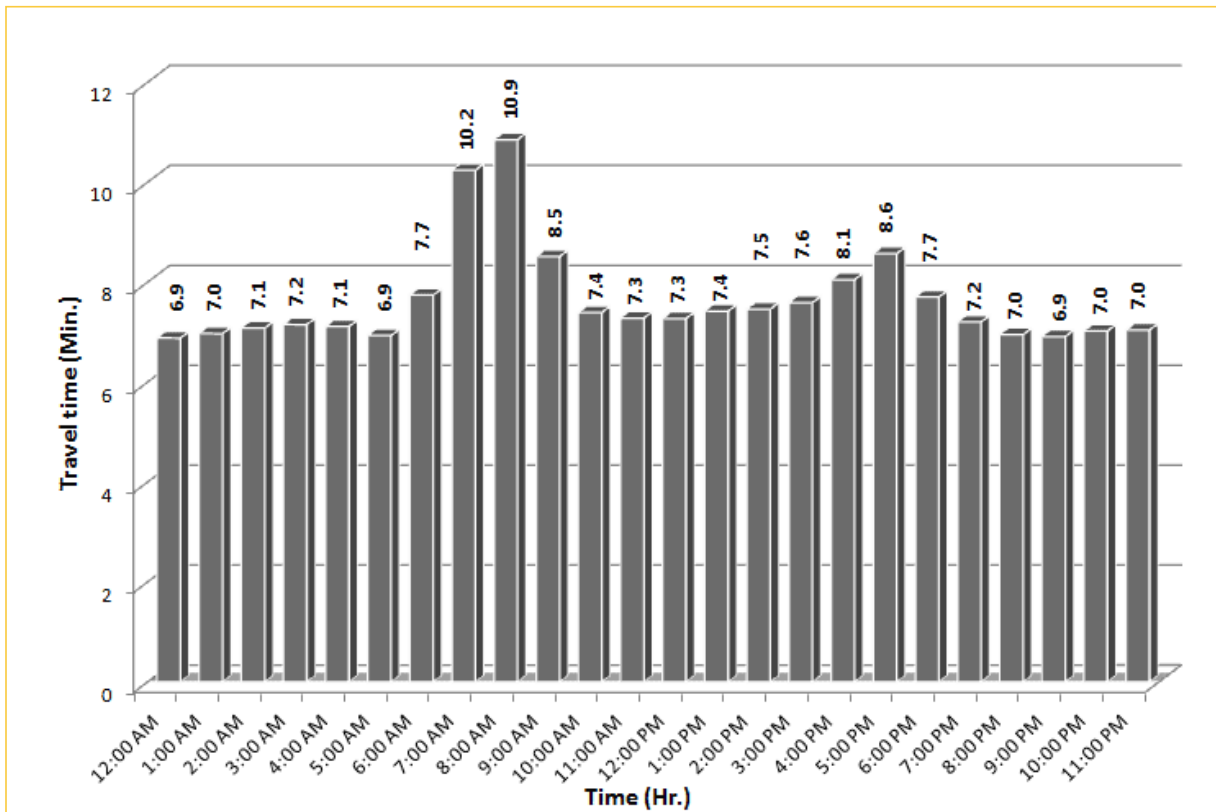
# TRAVEL TIME RELIABILITY REPORT

## Weekdays Travel Times by Time of Day\*

**SR 826 Eastbound: 7.1 Miles**  
From: West of NW 67 Avenue  
To: East of NW 12 Avenue



**SR 826 Westbound: 7.1 Miles**  
From: East of NW 12 Avenue  
To: West of NW 67 Avenue

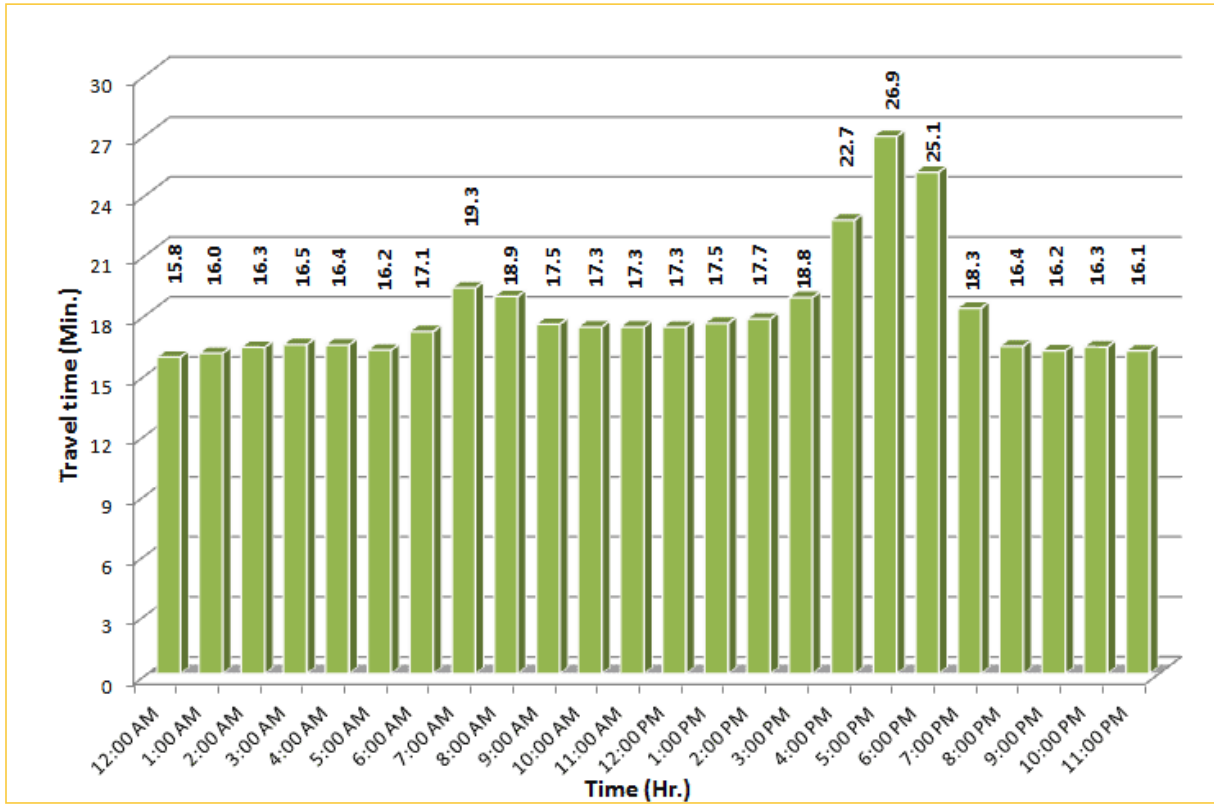


\* Twelve-month average from September 1<sup>st</sup>, 2014 to August 31<sup>st</sup>, 2015.

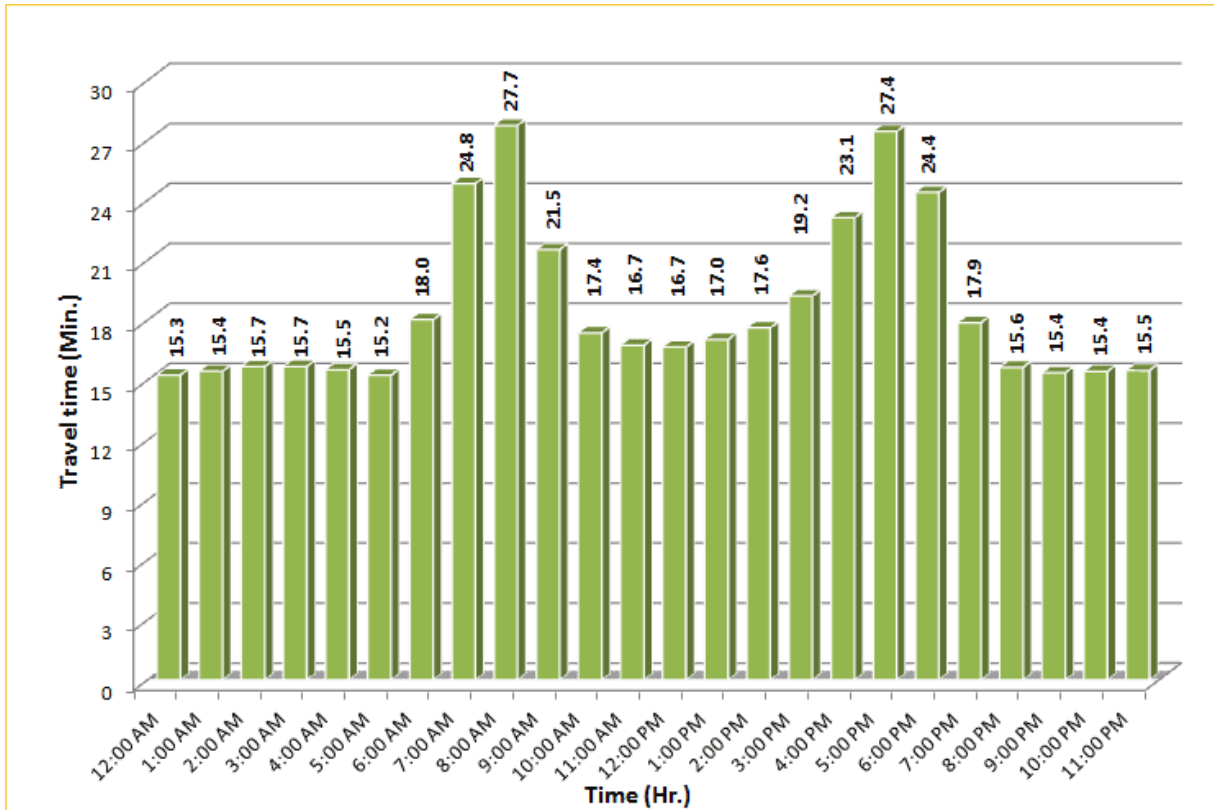
# TRAVEL TIME RELIABILITY REPORT

## Weekdays Travel Times by Time of Day\*

**SR 826 Northbound/Eastbound : 15.6 Miles**  
From: South of NW 25 Street  
To: East of NW 12 Avenue

**SR 826 Southbound/Westbound: 15.6 Miles**  
From: East of NW 12 Avenue  
To: South of NW 25 Street

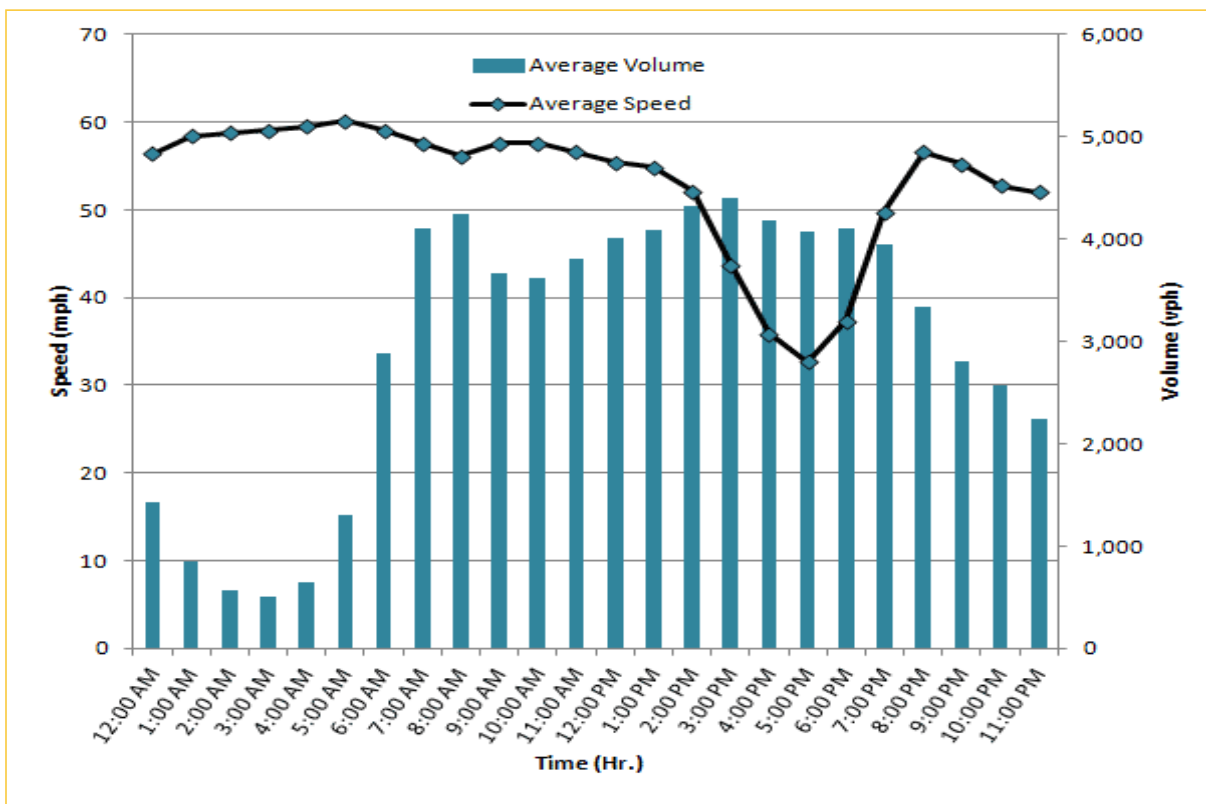



\* Twelve-month average from September 1<sup>st</sup>, 2014 to August 31<sup>st</sup>, 2015.

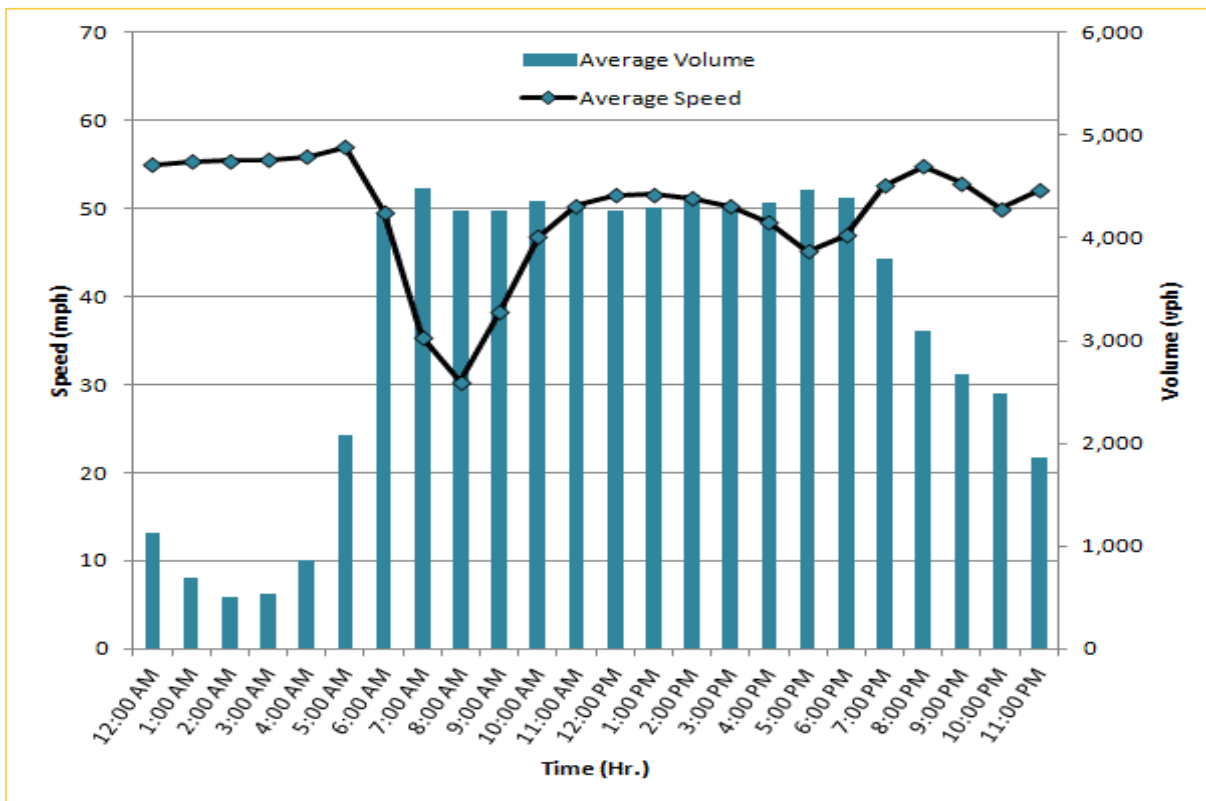
# TRAVEL TIME RELIABILITY REPORT

## Weekdays Speeds and Volumes by Time of Day\*

**I-95 Northbound: 17.3 Miles**  
From: US-1  
To: Miami-Dade / Broward County Line

**I-95 Southbound: 17.3 Miles**  
From: Miami-Dade / Broward County Line  
To: US-1

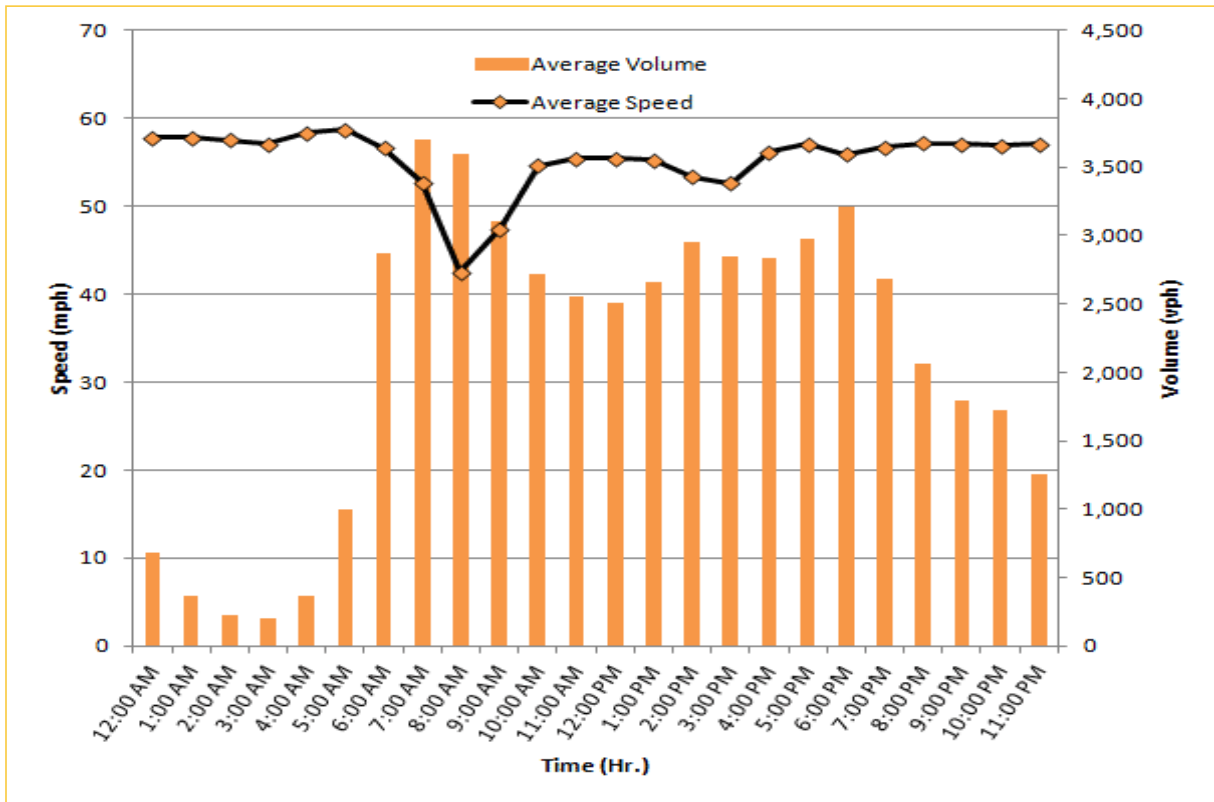
\* Twelve-month average from September 1<sup>st</sup>, 2014 to August 31<sup>st</sup>, 2015. Excludes express lanes.



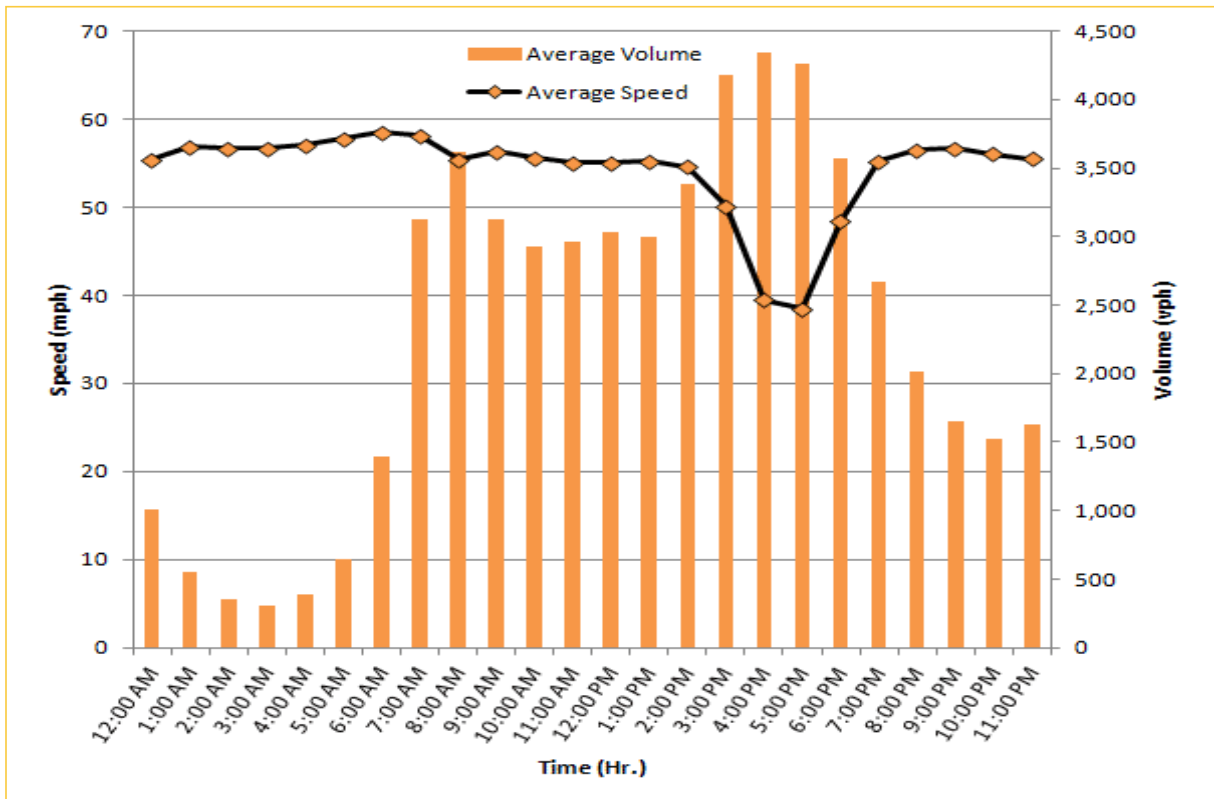
# TRAVEL TIME RELIABILITY REPORT

## Weekdays Speeds and Volumes by Time of Day\*

**I-195 Eastbound: 4.9 Miles**  
From: West of North Miami Avenue  
To: West of Alton Road



**I-195 Westbound: 4.9 Miles**  
From: West of Alton Road  
To: West of North Miami Avenue

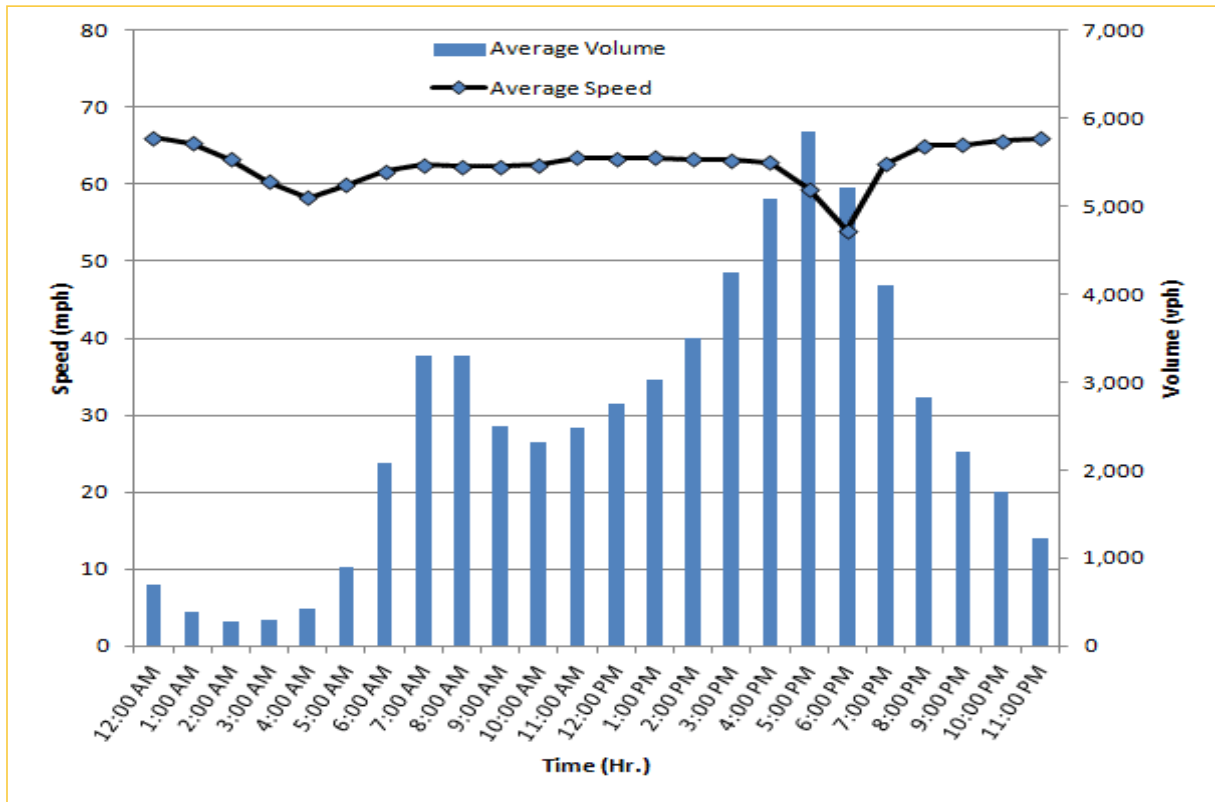


\* Twelve-month average from September 1<sup>st</sup>, 2014 to August 31<sup>st</sup>, 2015.

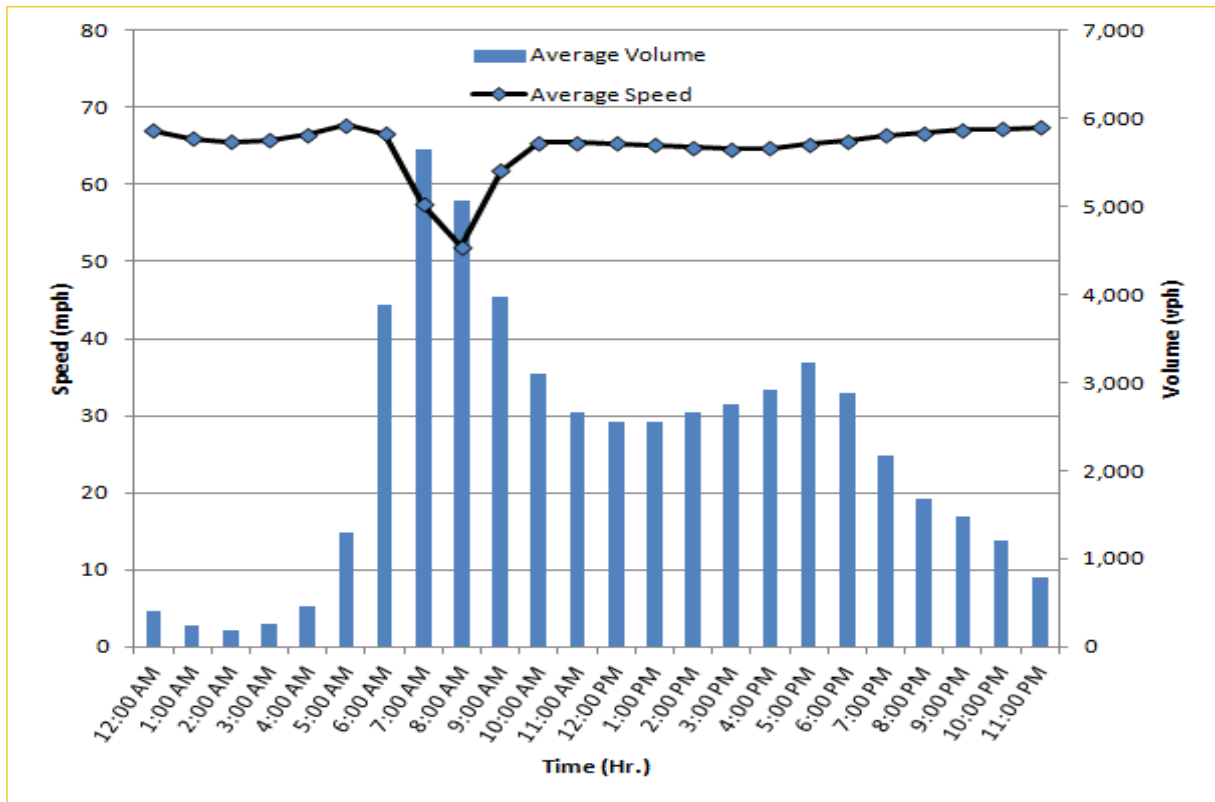
# TRAVEL TIME RELIABILITY REPORT

## Weekdays Speeds and Volumes by Time of Day\*

**I-75 Northbound: 5.4 Miles**  
From: West of SR 826  
To: North of Florida's Turnpike



**I-75 Southbound: 5.4 Miles**  
From: North of Florida's Turnpike  
To: West of SR 826

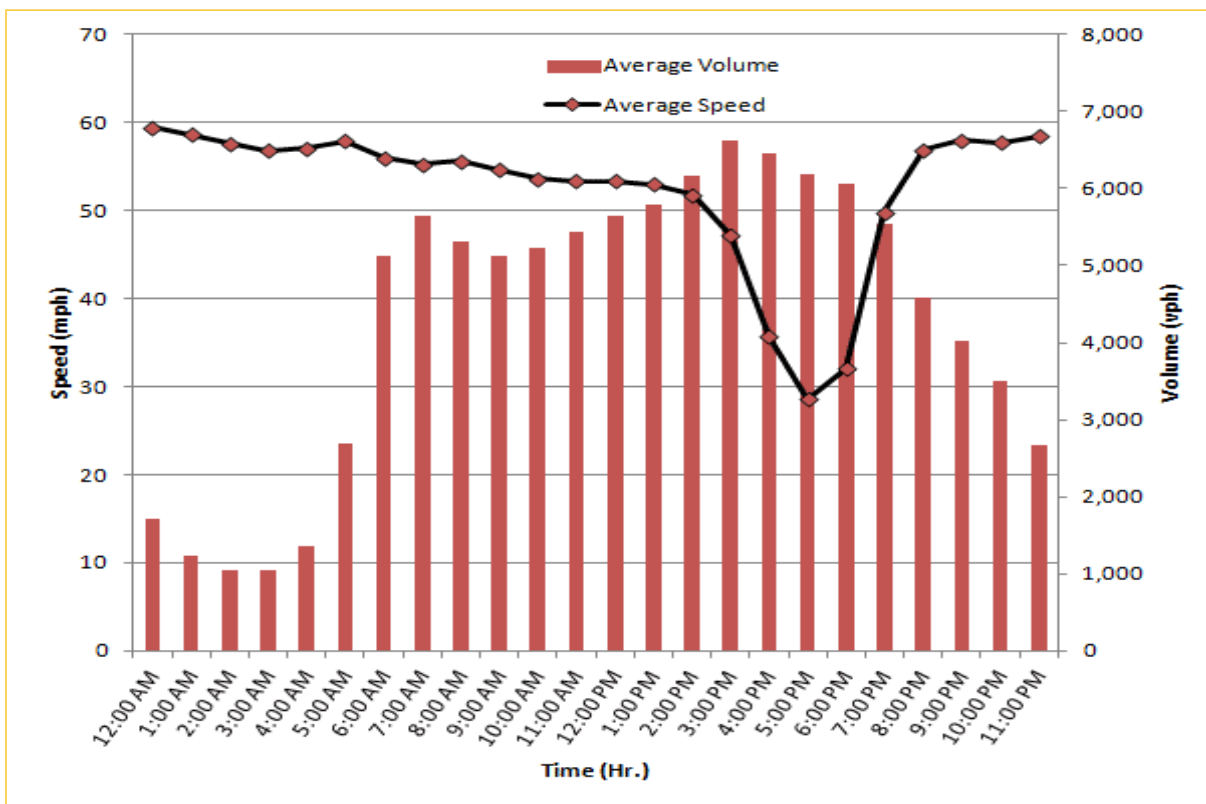


\* Twelve-month average from September 1<sup>st</sup>, 2014 to August 31<sup>st</sup>, 2015.

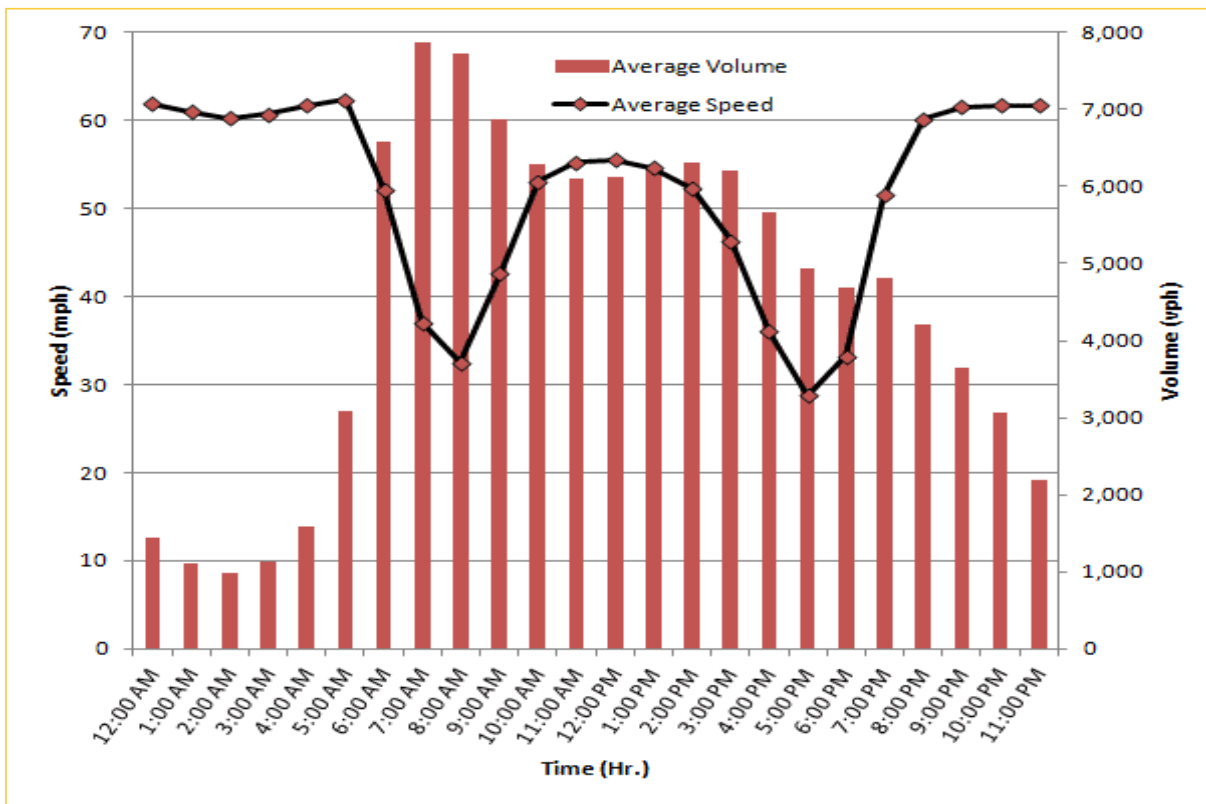
# TRAVEL TIME RELIABILITY REPORT

## Weekdays Speeds and Volumes by Time of Day\*

**SR 826 Northbound: 8.4 Miles**  
From: South of NW 25 Street  
To: North of NW 154 Street



**SR 826 Southbound: 8.4 Miles**  
From: North of NW 154 Street  
To: South of NW 25 Street

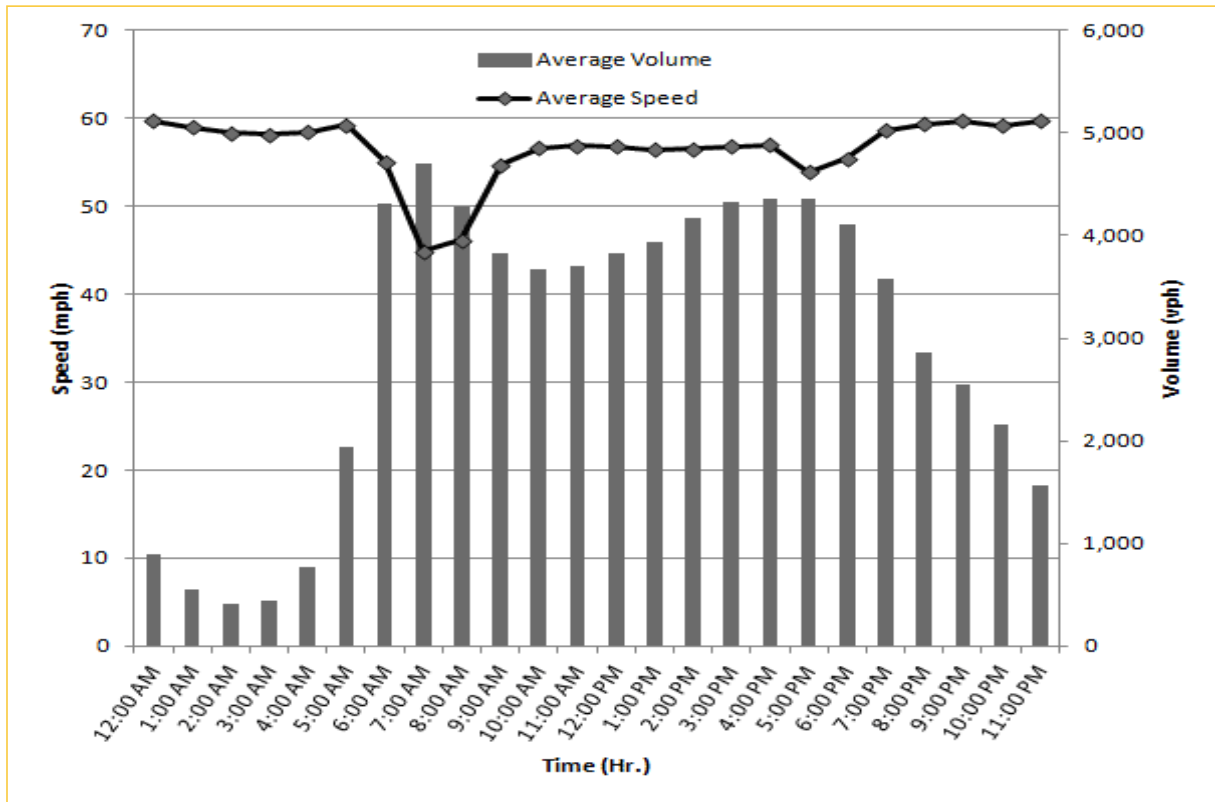


\* Twelve-month average from September 1<sup>st</sup>, 2014 to August 31<sup>st</sup>, 2015.

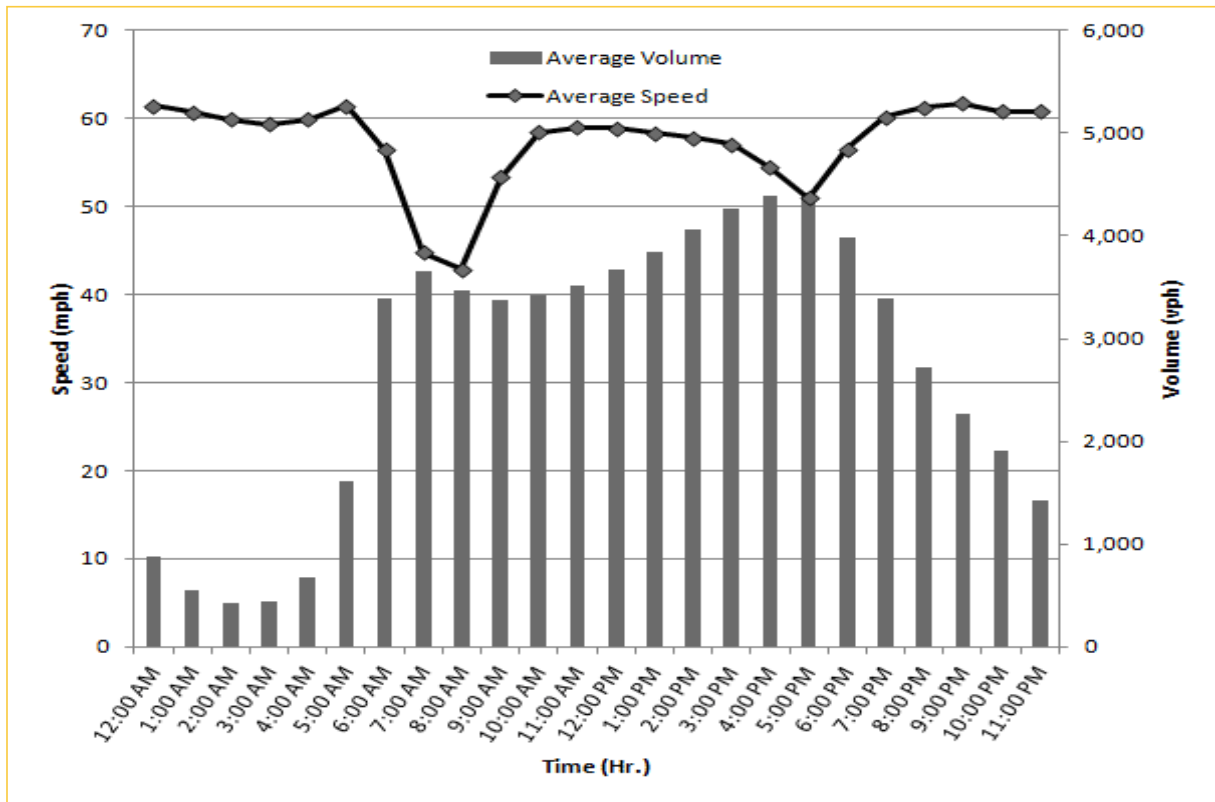
# TRAVEL TIME RELIABILITY REPORT

## Weekdays Speeds and Volumes by Time of Day\*

SR 826 Eastbound: 7.1 Miles  
From: West of NW 67 Avenue  
To: East of NW 12 Avenue

SR 826 Westbound: 7.1 Miles  
From: East of NW 12 Avenue  
To: West of NW 67 Avenue

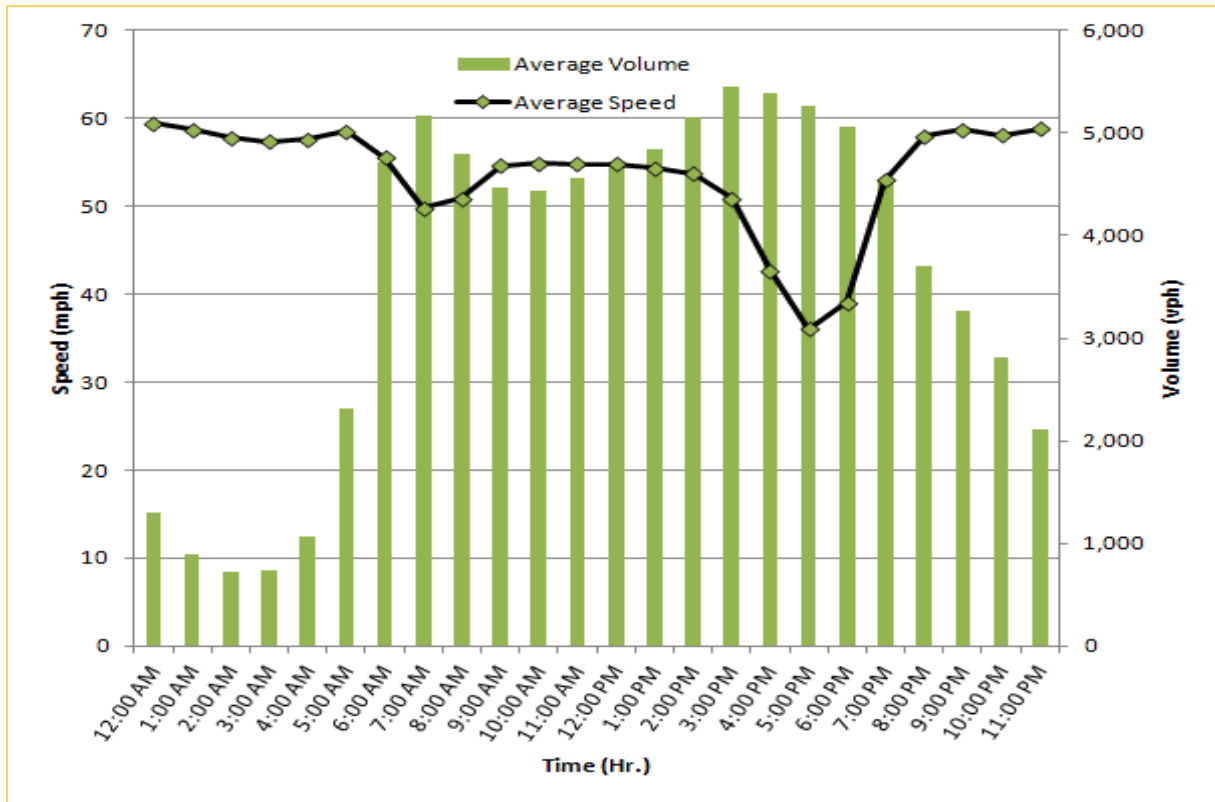



\* Twelve-month average from September 1<sup>st</sup>, 2014 to August 31<sup>st</sup>, 2015.

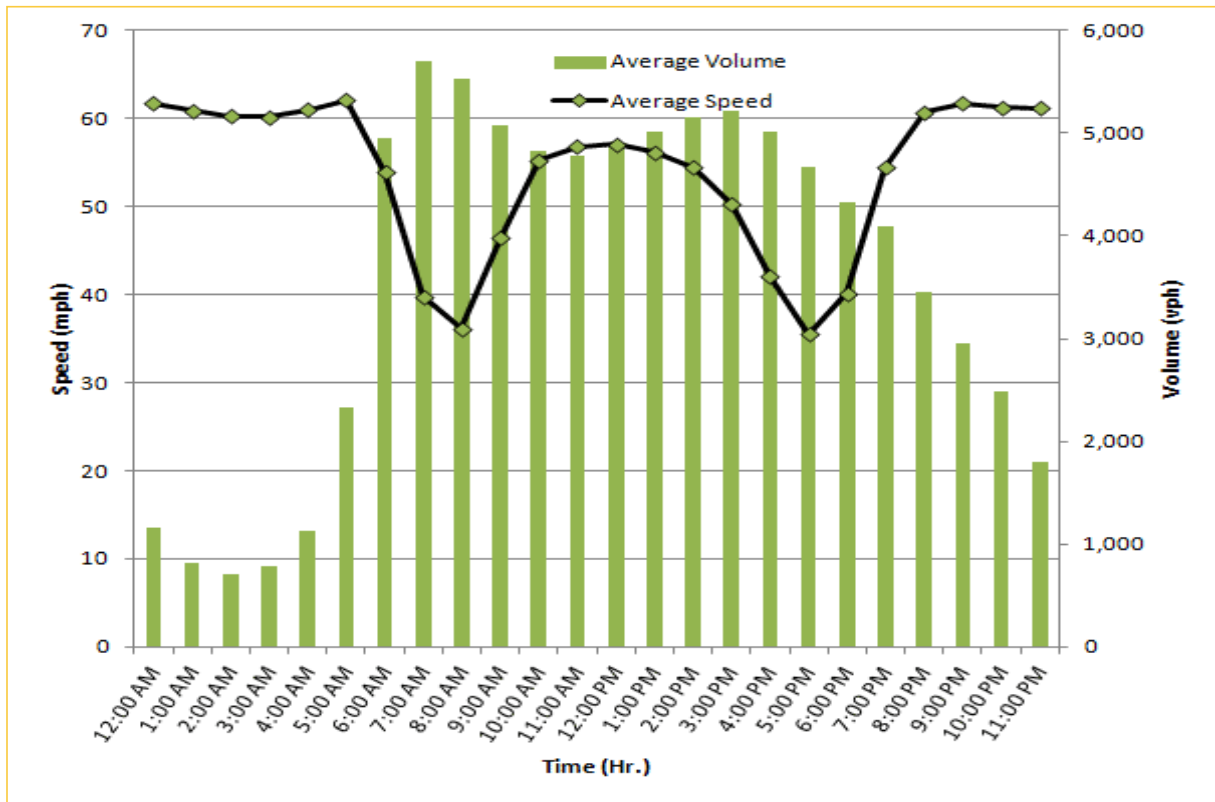
# TRAVEL TIME RELIABILITY REPORT

## Weekdays Speeds and Volumes by Time of Day\*

**SR 826 Northbound/Eastbound : 15.6 Miles**  
From: South of NW 25 Street  
To: East of NW 12 Avenue

**SR 826 Southbound/Westbound: 15.6 Miles**  
From: East of NW 12 Avenue  
To: South of NW 25 Street

\* Twelve-month average from September 1<sup>st</sup>, 2014 to August 31<sup>st</sup>, 2015.