

## TRAVEL TIME RELIABILITY REPORT

### Travel Time Index by Roadway\*

Time	I-95		I-195		I-75		SR 826					
	NB	SB	EB	WB	NB	SB	NB	EB	NB/EB	SB	WB	SB/WB
0:00	1.10	1.19	1.09	1.02	0.98	0.98	0.99	0.99	0.99	1.00	0.98	0.98
1:00	1.08	1.15	1.10	1.01	0.99	1.00	1.01	1.00	1.00	1.02	0.99	1.00
2:00	1.08	1.14	1.10	1.02	1.02	1.02	1.03	1.01	1.02	1.04	1.01	1.02
3:00	1.07	1.15	1.11	1.03	1.08	1.02	1.04	1.01	1.03	1.02	1.01	1.01
4:00	1.06	1.13	1.09	1.02	1.13	1.00	1.04	1.01	1.03	1.01	1.01	1.00
5:00	1.04	1.09	1.08	1.01	1.09	0.99	1.03	1.00	1.01	1.00	0.99	0.99
6:00	1.05	1.24	1.11	0.99	1.03	1.00	1.06	1.08	1.07	1.20	1.06	1.13
7:00	1.07	1.75	1.19	1.00	1.02	1.25	1.09	1.35	1.21	1.65	1.32	1.49
8:00	1.10	2.06	1.47	1.05	1.03	1.48	1.09	1.32	1.19	1.87	1.41	1.65
9:00	1.07	1.64	1.32	1.04	1.02	1.14	1.10	1.11	1.10	1.50	1.17	1.34
10:00	1.08	1.31	1.15	1.05	1.02	1.01	1.12	1.05	1.08	1.20	1.05	1.12
11:00	1.09	1.23	1.14	1.06	1.01	1.01	1.12	1.05	1.08	1.14	1.04	1.09
12:00	1.11	1.21	1.14	1.06	1.01	1.01	1.12	1.05	1.08	1.14	1.04	1.08
13:00	1.13	1.21	1.14	1.06	1.00	1.02	1.13	1.06	1.10	1.16	1.07	1.11
14:00	1.19	1.22	1.19	1.07	1.00	1.02	1.15	1.05	1.11	1.22	1.07	1.14
15:00	1.40	1.24	1.23	1.15	1.00	1.03	1.27	1.05	1.16	1.39	1.07	1.23
16:00	1.69	1.28	1.14	1.42	1.00	1.02	1.68	1.05	1.38	1.77	1.15	1.48
17:00	1.86	1.37	1.11	1.50	1.07	1.01	2.16	1.09	1.65	2.25	1.23	1.76
18:00	1.66	1.32	1.16	1.23	1.25	1.01	1.95	1.07	1.54	1.99	1.11	1.57
19:00	1.26	1.19	1.14	1.06	1.03	1.00	1.27	1.02	1.16	1.27	1.04	1.16
20:00	1.10	1.13	1.12	1.04	0.97	0.99	1.06	1.00	1.03	1.04	1.00	1.01
21:00	1.10	1.17	1.11	1.03	0.97	0.99	1.03	0.99	1.01	1.02	0.99	1.00
22:00	1.14	1.41	1.12	1.03	0.97	0.98	1.03	0.99	1.01	1.01	0.99	0.99
23:00	1.16	1.38	1.11	1.02	0.97	0.98	1.02	0.98	1.00	1.01	0.99	0.99
<b>FFS**</b>	<b>60 mph</b>	<b>60 mph</b>	<b>60 mph</b>	<b>60 mph</b>	<b>67 mph</b>	<b>67 mph</b>	<b>60 mph</b>	<b>58 mph</b>	<b>59 mph</b>	<b>63 mph</b>	<b>60 mph</b>	<b>61 mph</b>

Maximum Travel Time Index. \*\* FFS: Free Flow Speed

**Travel Time Index (TTI)** is a measure of average conditions that indicates how much longer, **on average**, travel times are during congestion compared to during light traffic.

**Real World Example:** A TTI of 1.60 means that for a trip that usually takes 10 minutes in light traffic, a traveler should budget for an additional 6 minutes **on average**.

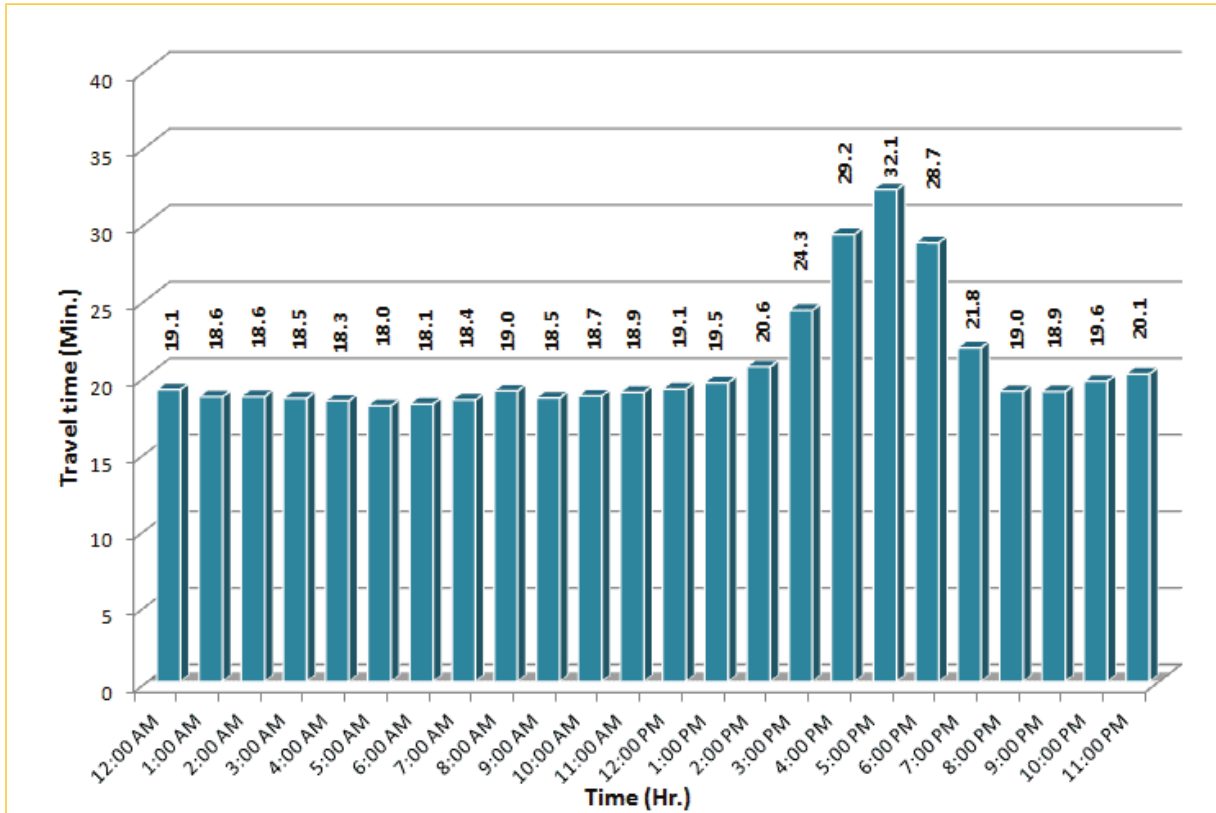


\* Twelve-month average from April 1<sup>st</sup>, 2014 to March 31<sup>st</sup>, 2015.

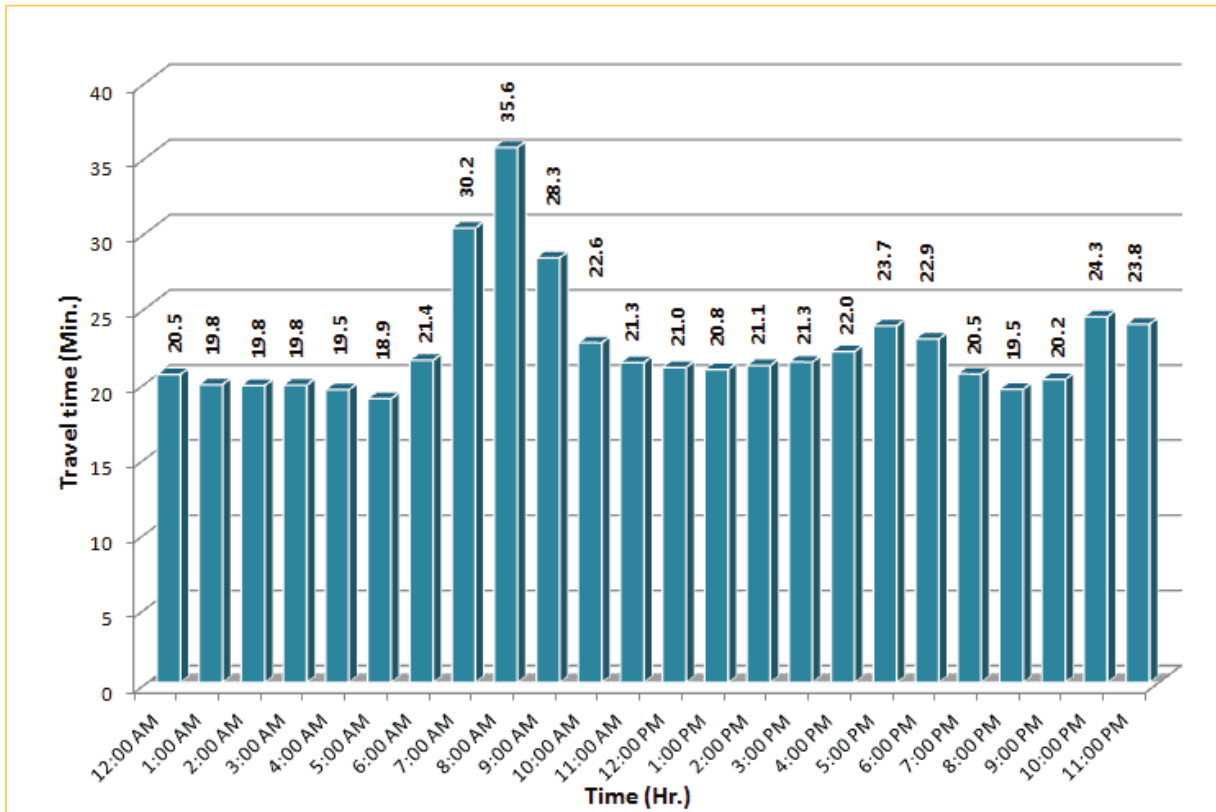
# TRAVEL TIME RELIABILITY REPORT

## Weekdays Travel Times by Time of Day\*

**I-95 Northbound: 17.3 Miles**  
From: US-1  
To: Miami-Dade / Broward County Line

**I-95 Southbound: 17.3 Miles**  
From: Miami-Dade / Broward County Line  
To: US-1

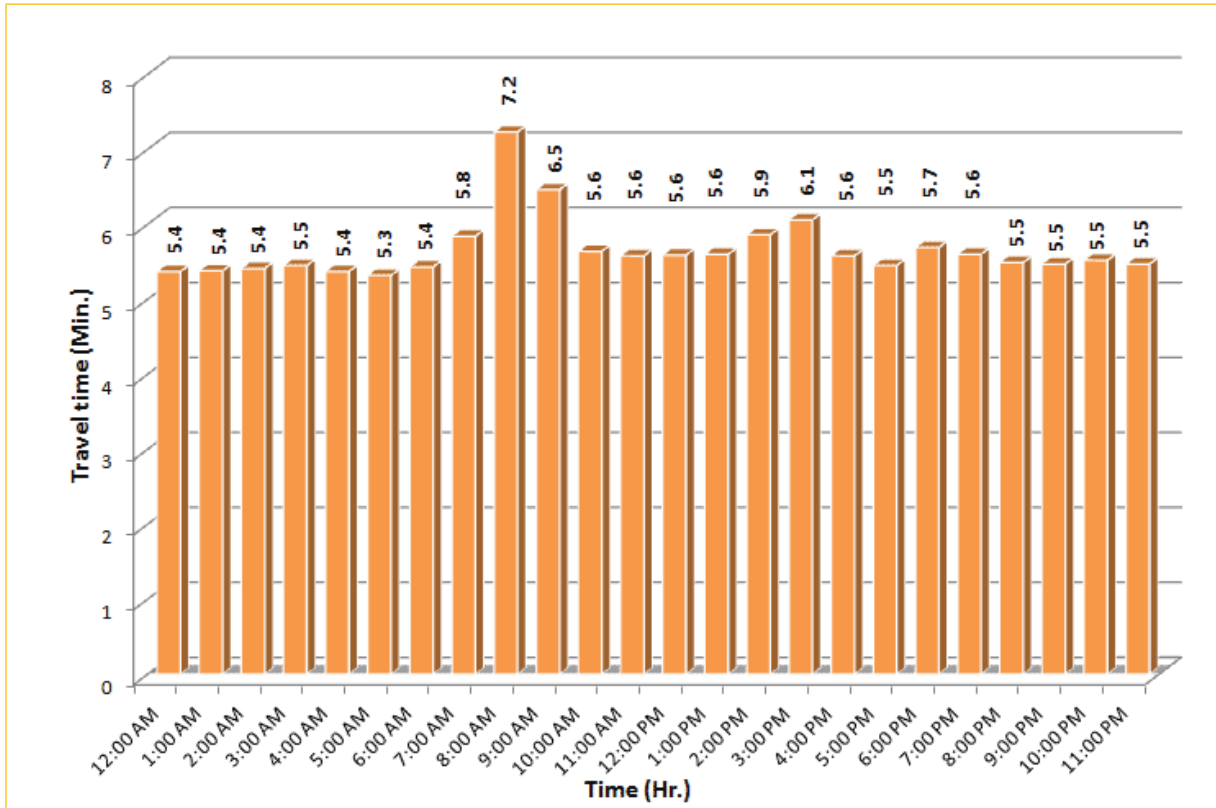
\* Twelve-month average from April 1<sup>st</sup>, 2014 to March 31<sup>st</sup>, 2015.

Excludes express lanes.

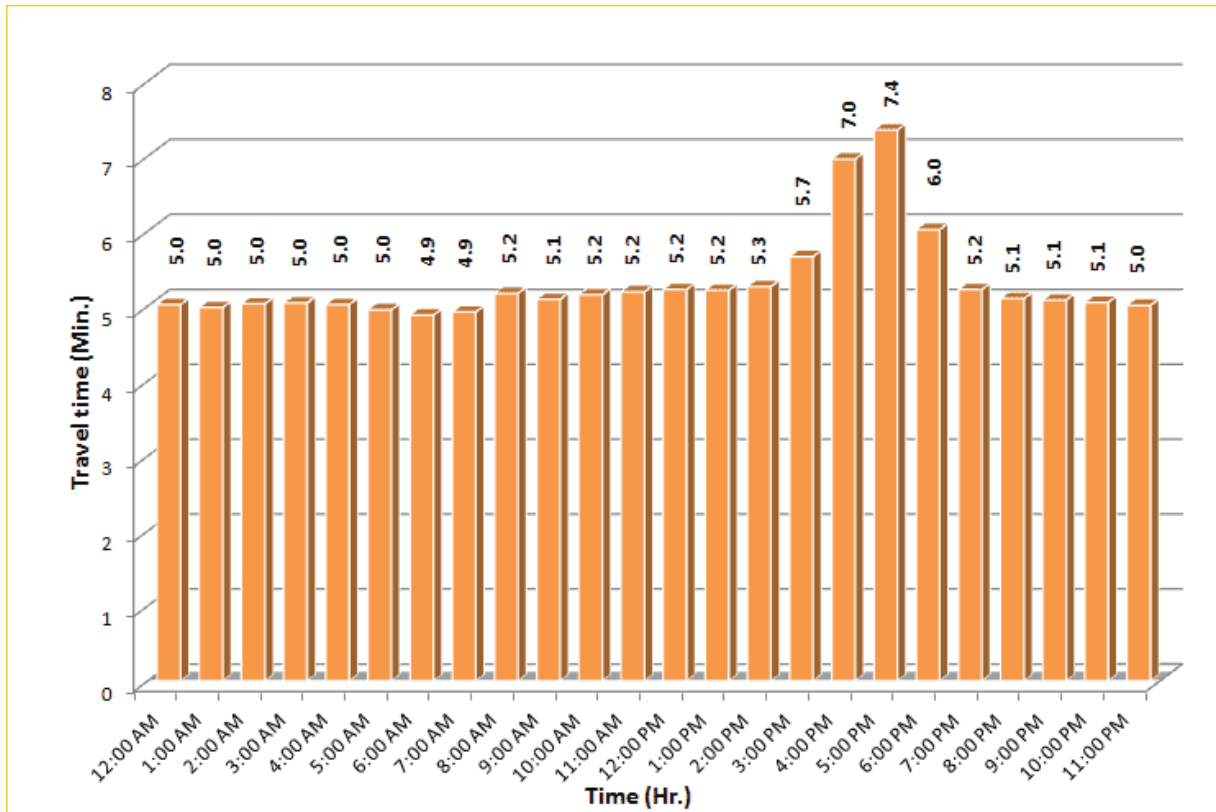
# TRAVEL TIME RELIABILITY REPORT

## Weekdays Travel Times by Time of Day\*

**I-195 Eastbound: 4.9 Miles**  
From: West of North Miami Avenue  
To: West of Alton Road



**I-195 Westbound: 4.9 Miles**  
From: West of Alton Road  
To: West of North Miami Avenue


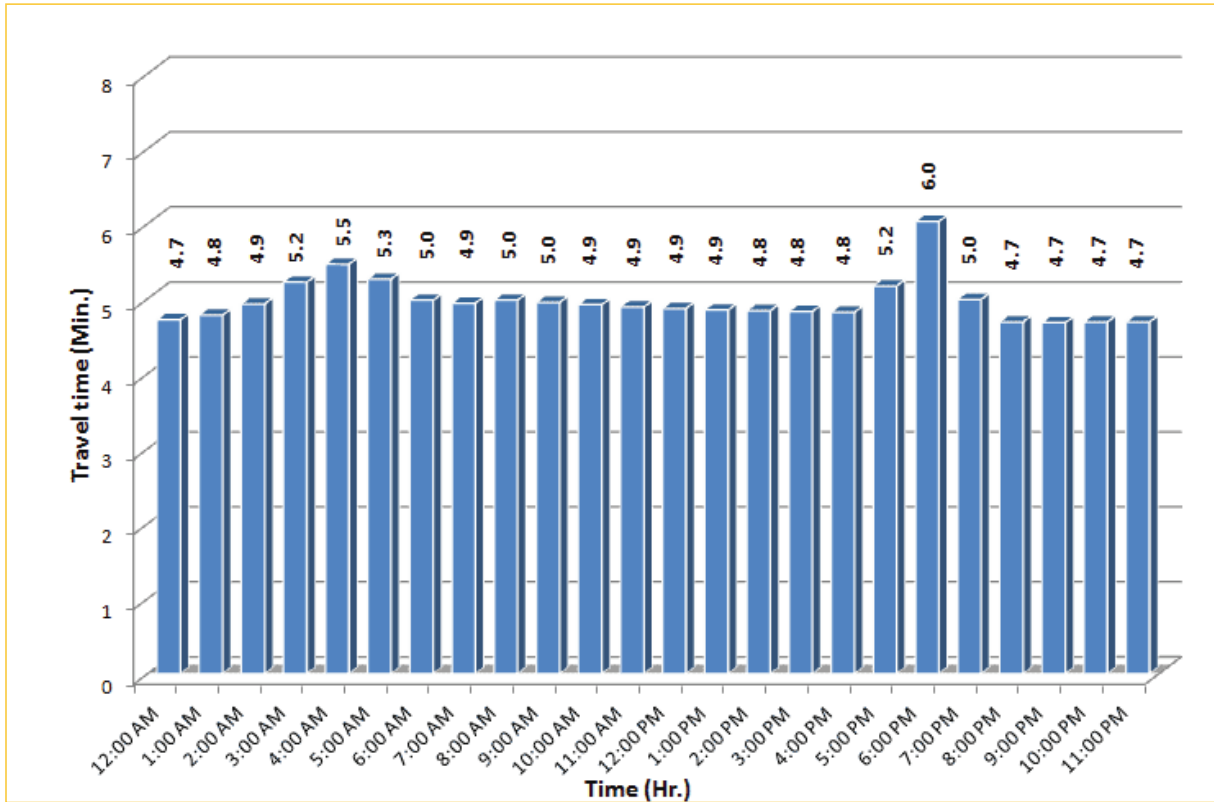


\* Twelve-month average from April 1<sup>st</sup>, 2014 to March 31<sup>st</sup>, 2015.

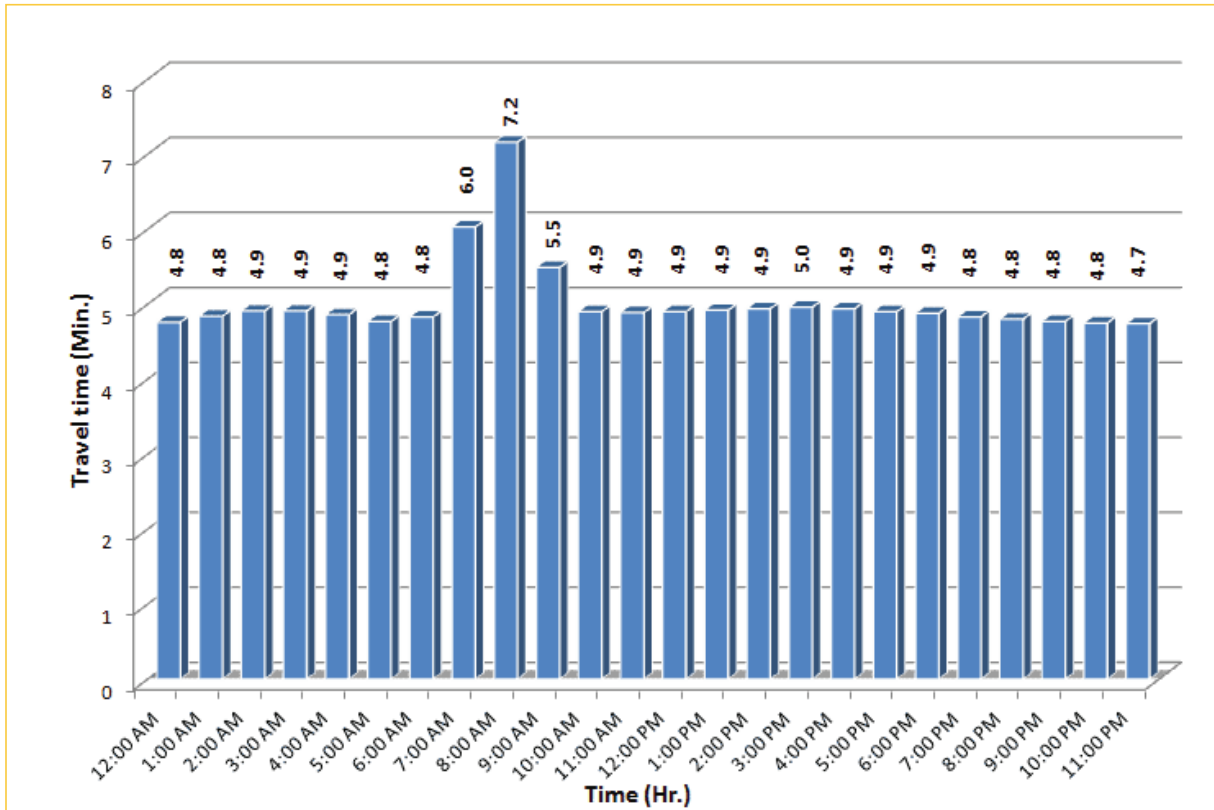
## TRAVEL TIME RELIABILITY REPORT

### Weekdays Travel Times by Time of Day\*

**I-75 Northbound: 5.4 Miles**  
From: West of SR 826  
To: North of Florida's Turnpike

**I-75 Southbound: 5.4 Miles**  
From: North of Florida's Turnpike  
To: West of SR 826


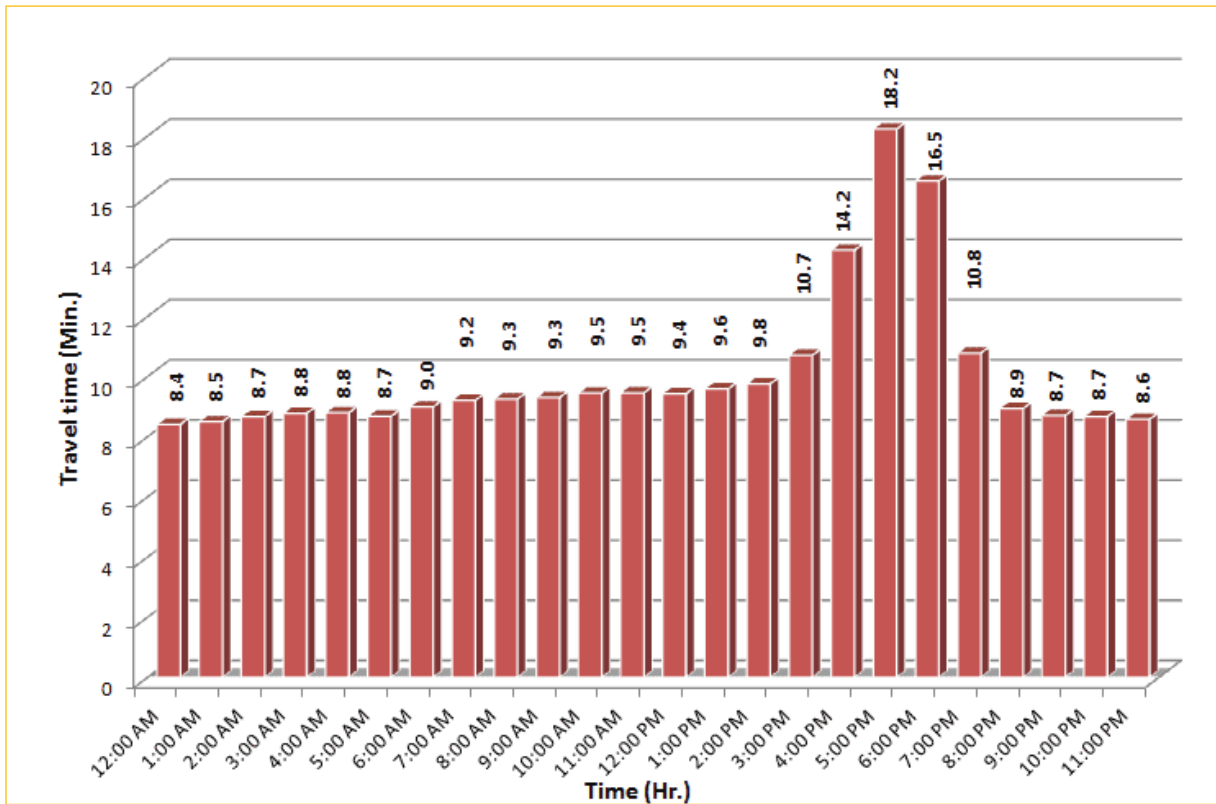



\* Twelve-month average from April 1<sup>st</sup>, 2014 to March 31<sup>st</sup>, 2015.

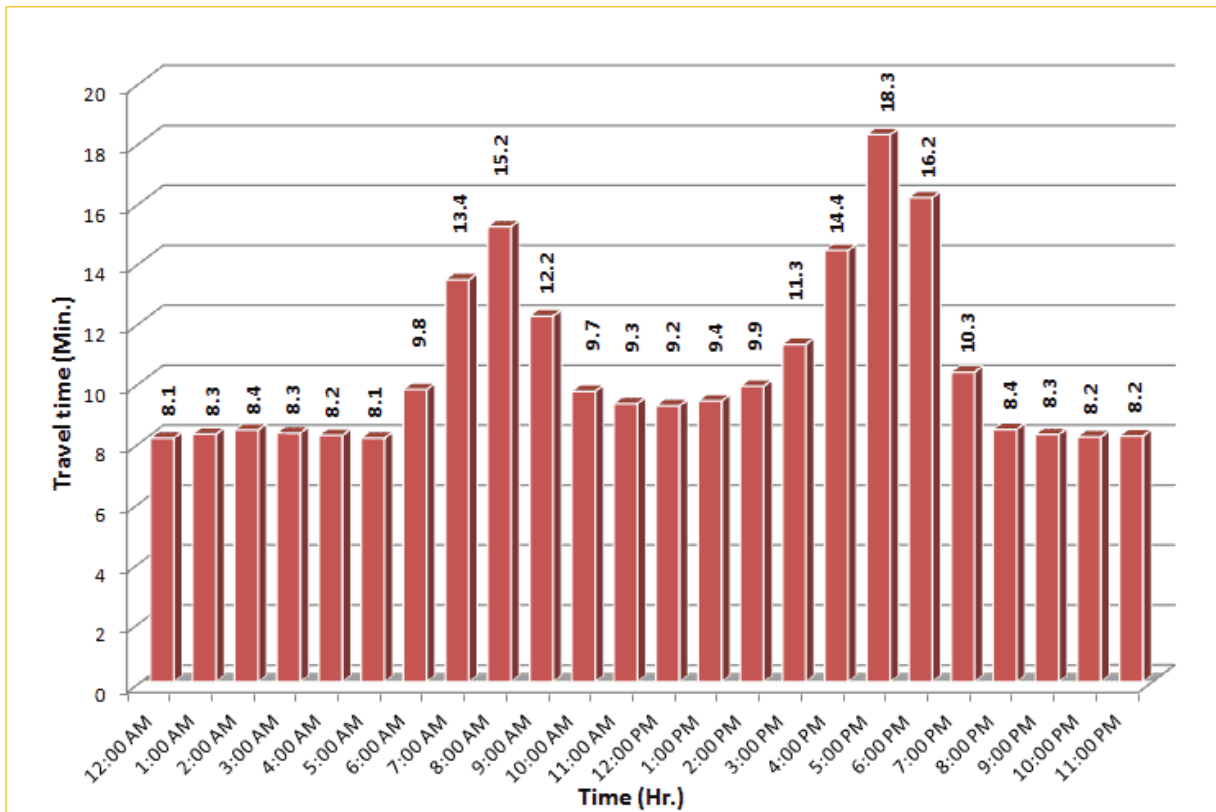
# TRAVEL TIME RELIABILITY REPORT

## Weekdays Travel Times by Time of Day\*

**SR 826 Northbound: 8.4 Miles**  
From: South of NW 25 Street  
To: North of NW 154 Street

**SR 826 Southbound: 8.4 Miles**  
From: North of NW 154 Street  
To: South of NW 25 Street

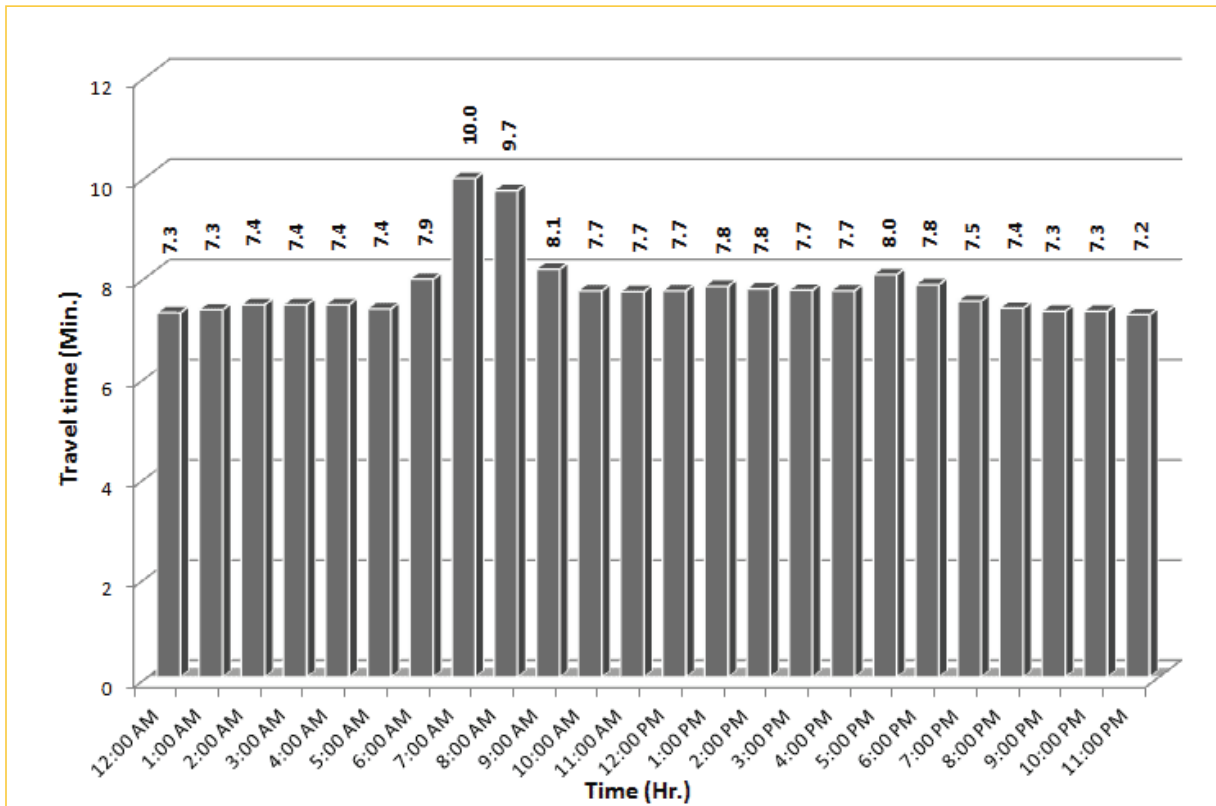



\* Twelve-month average from April 1<sup>st</sup>, 2014 to March 31<sup>st</sup>, 2015.

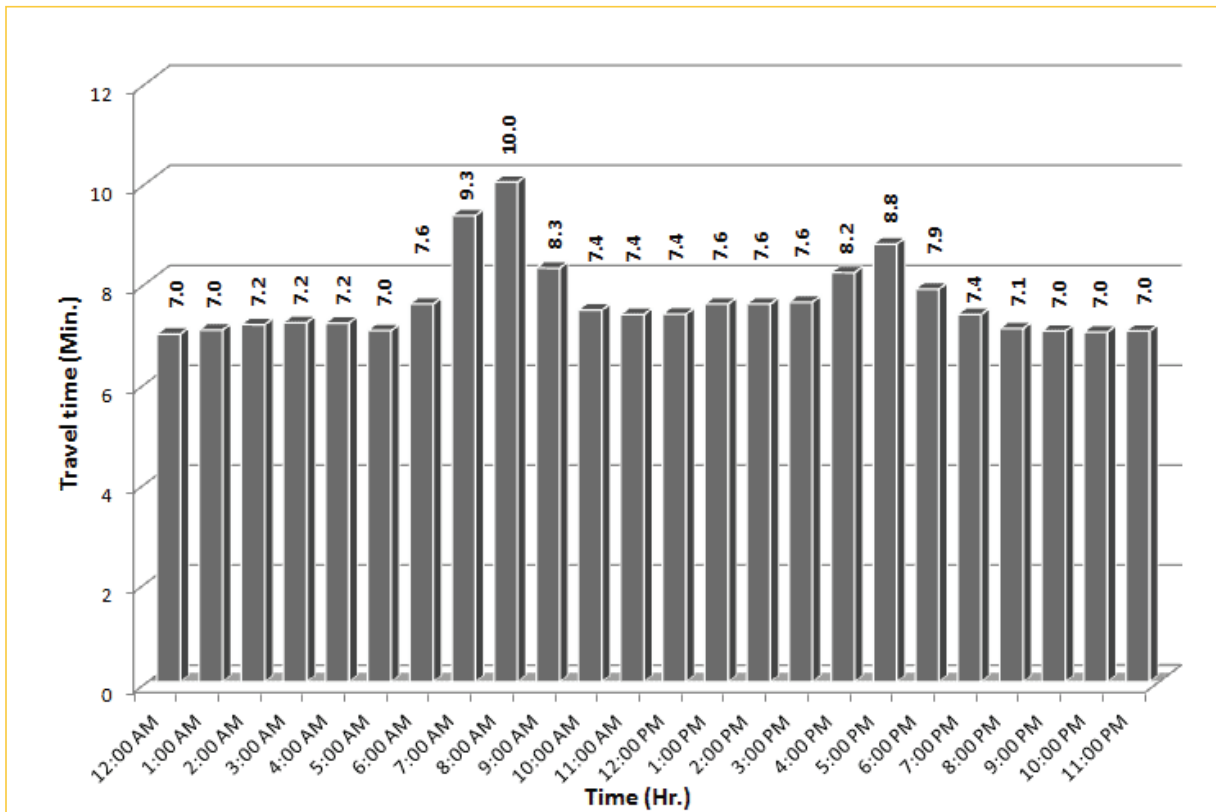
# TRAVEL TIME RELIABILITY REPORT

## Weekdays Travel Times by Time of Day\*

**SR 826 Eastbound: 7.1 Miles**  
From: West of NW 67 Avenue  
To: East of NW 12 Avenue



**SR 826 Westbound: 7.1 Miles**  
From: East of NW 12 Avenue  
To: West of NW 67 Avenue



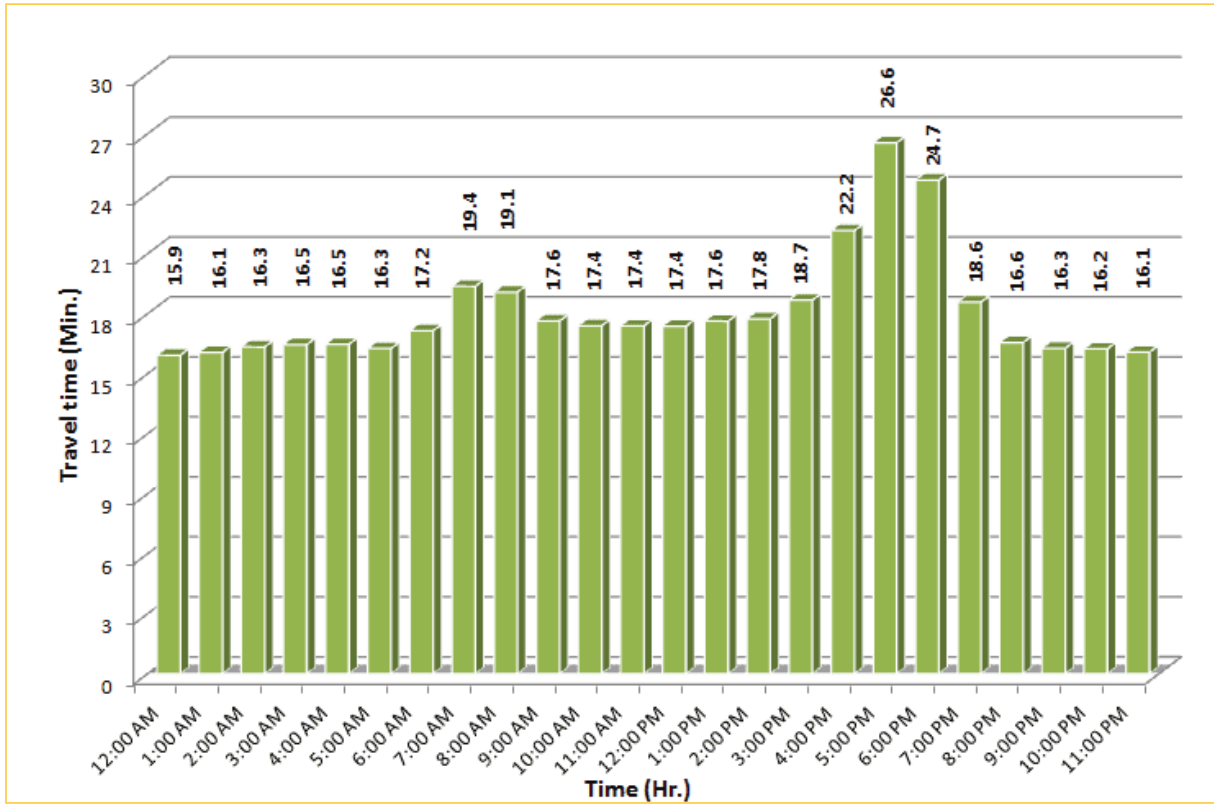
\* Twelve-month average from April 1<sup>st</sup>, 2014 to March 31<sup>st</sup>, 2015.



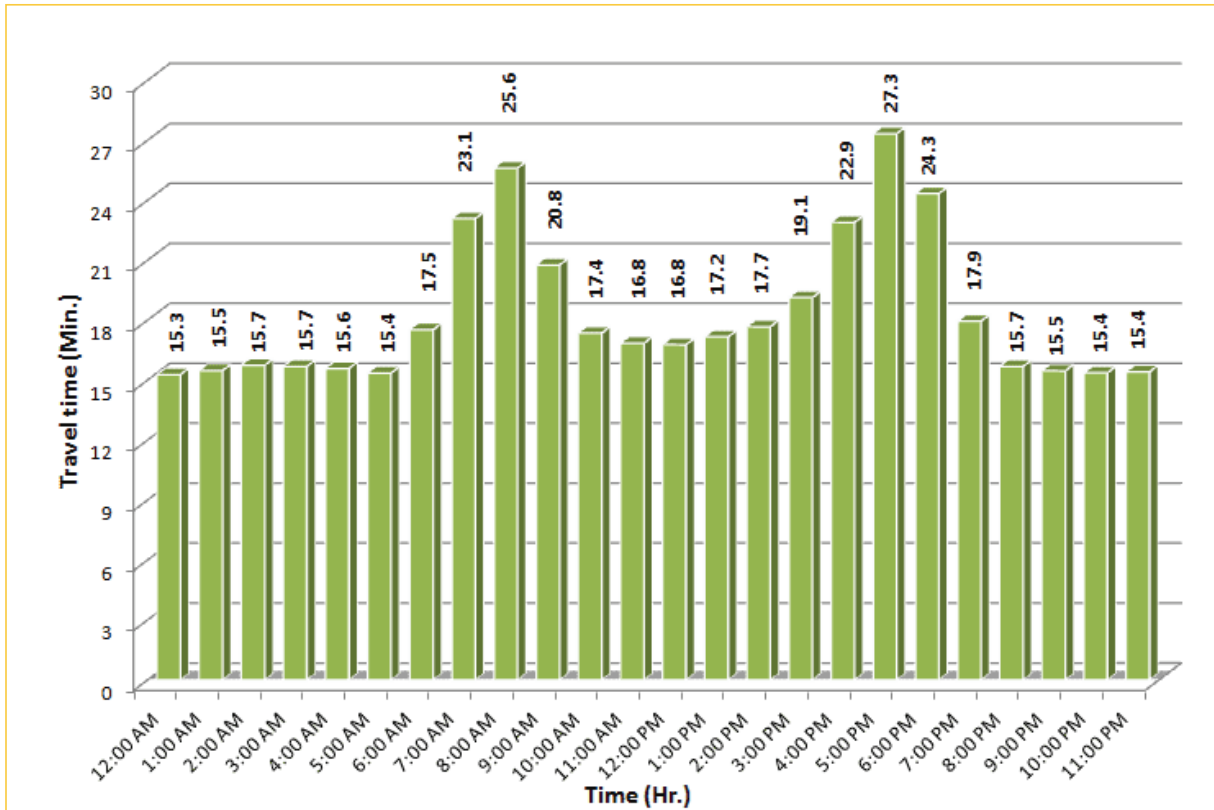
## TRAVEL TIME RELIABILITY REPORT

### Weekdays Travel Times by Time of Day\*

**SR 826 Northbound/Eastbound : 15.6 Miles**  
From: South of NW 25 Street  
To: East of NW 12 Avenue

**SR 826 Southbound/Westbound: 15.6 Miles**  
From: East of NW 12 Avenue  
To: South of NW 25 Street

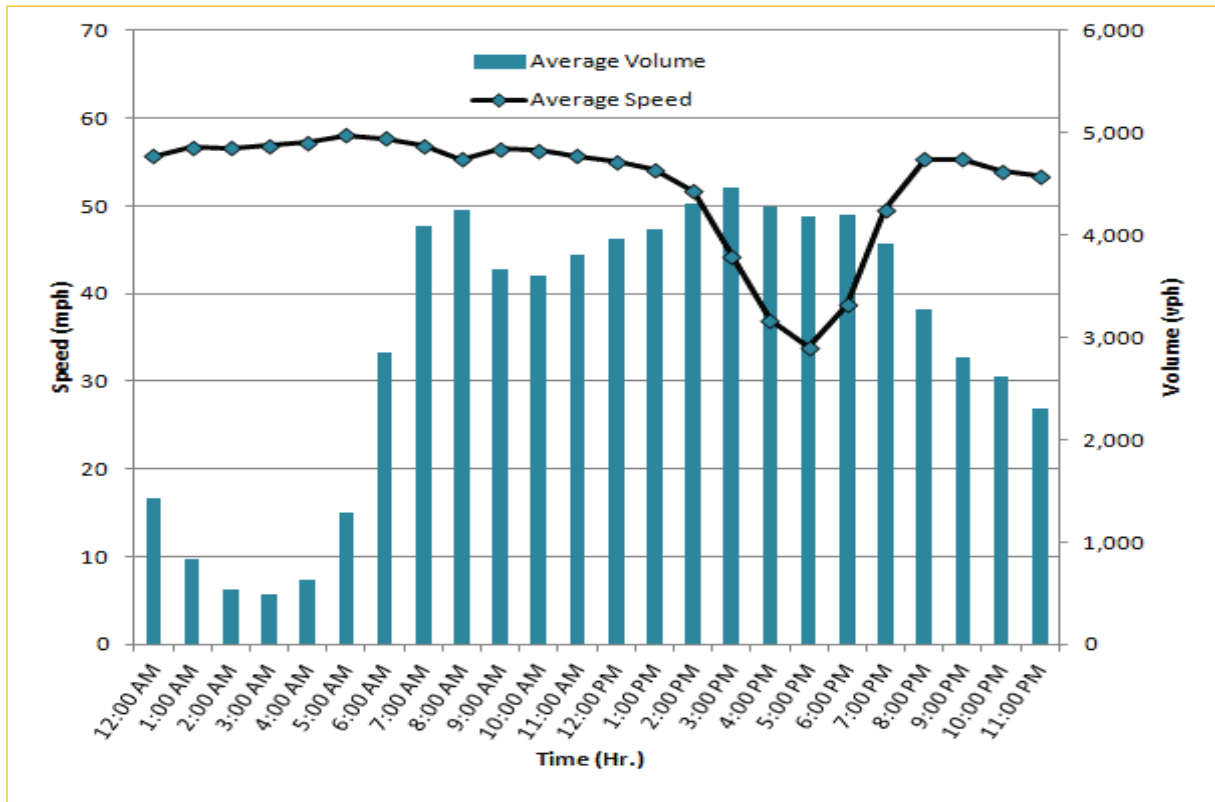



\* Twelve-month average from April 1<sup>st</sup>, 2014 to March 31<sup>st</sup>, 2015.

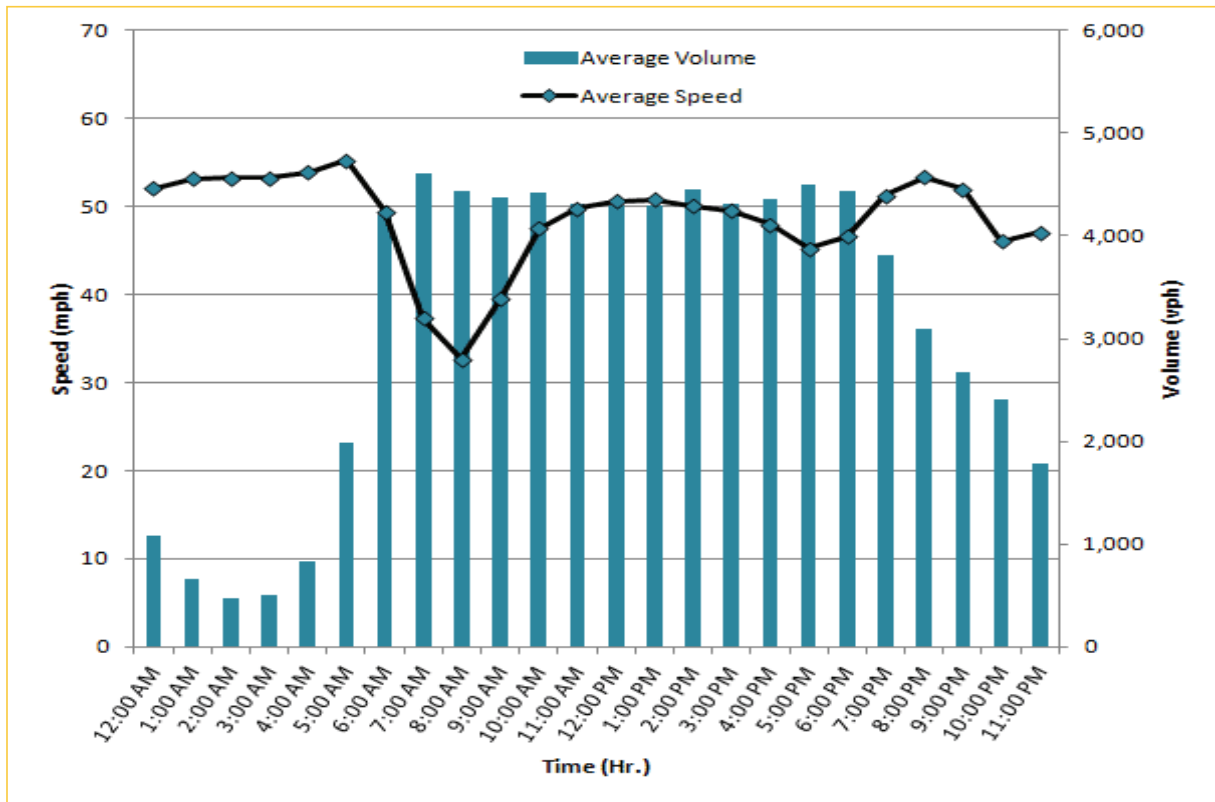
# TRAVEL TIME RELIABILITY REPORT

## Weekdays Speeds and Volumes by Time of Day\*

**I-95 Northbound: 17.3 Miles**  
From: US-1  
To: Miami-Dade / Broward County Line

**I-95 Southbound: 17.3 Miles**  
From: Miami-Dade / Broward County Line  
To: US-1

\* Twelve-month average from April 1<sup>st</sup>, 2014 to March 31<sup>st</sup>, 2015.

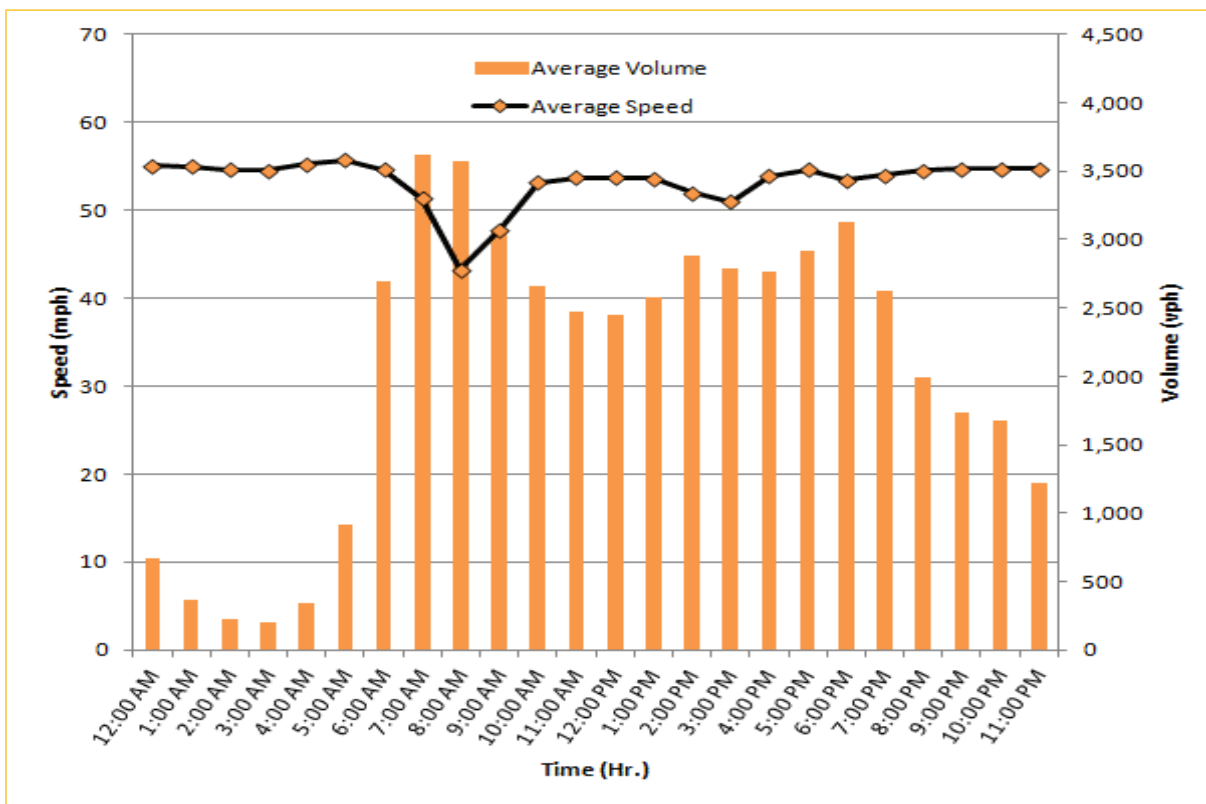
Excludes express lanes.



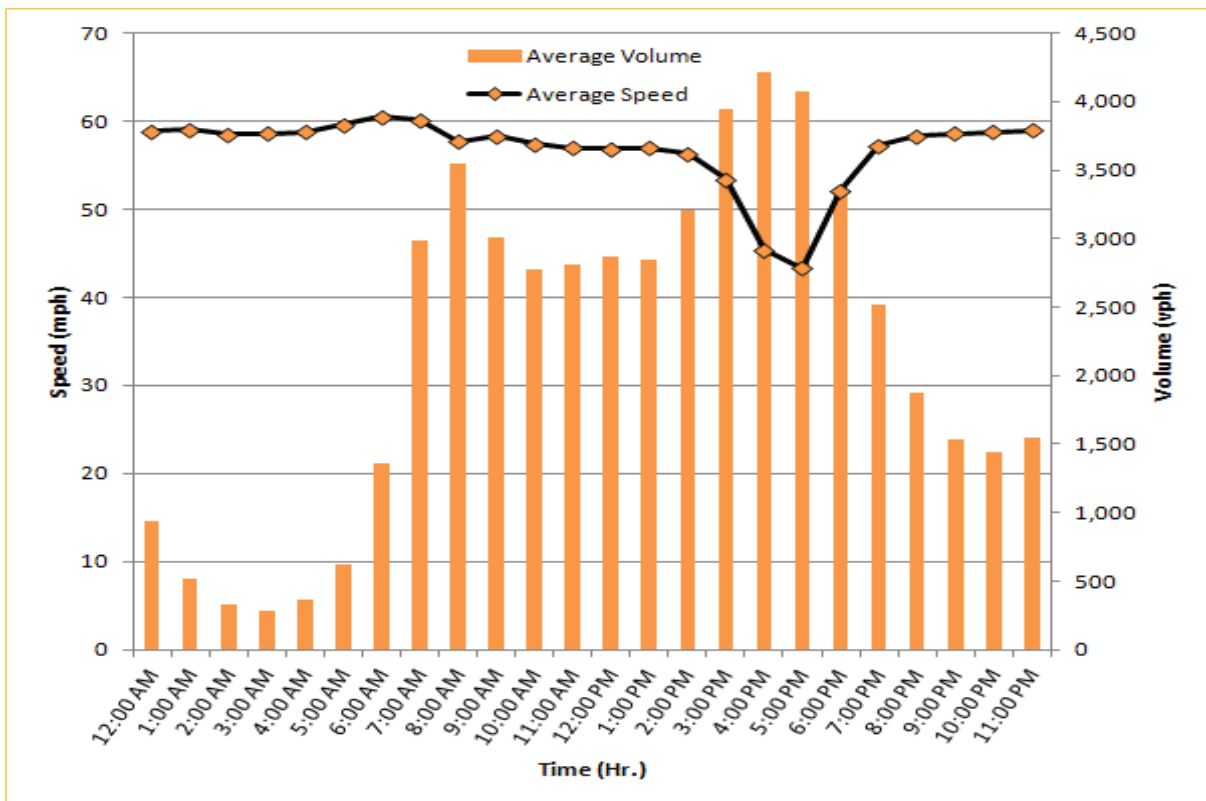
# TRAVEL TIME RELIABILITY REPORT

## Weekdays Speeds and Volumes by Time of Day\*

**I-195 Eastbound: 4.9 Miles**  
From: West of North Miami Avenue  
To: West of Alton Road



**I-195 Westbound: 4.9 Miles**  
From: West of Alton Road  
To: West of North Miami Avenue

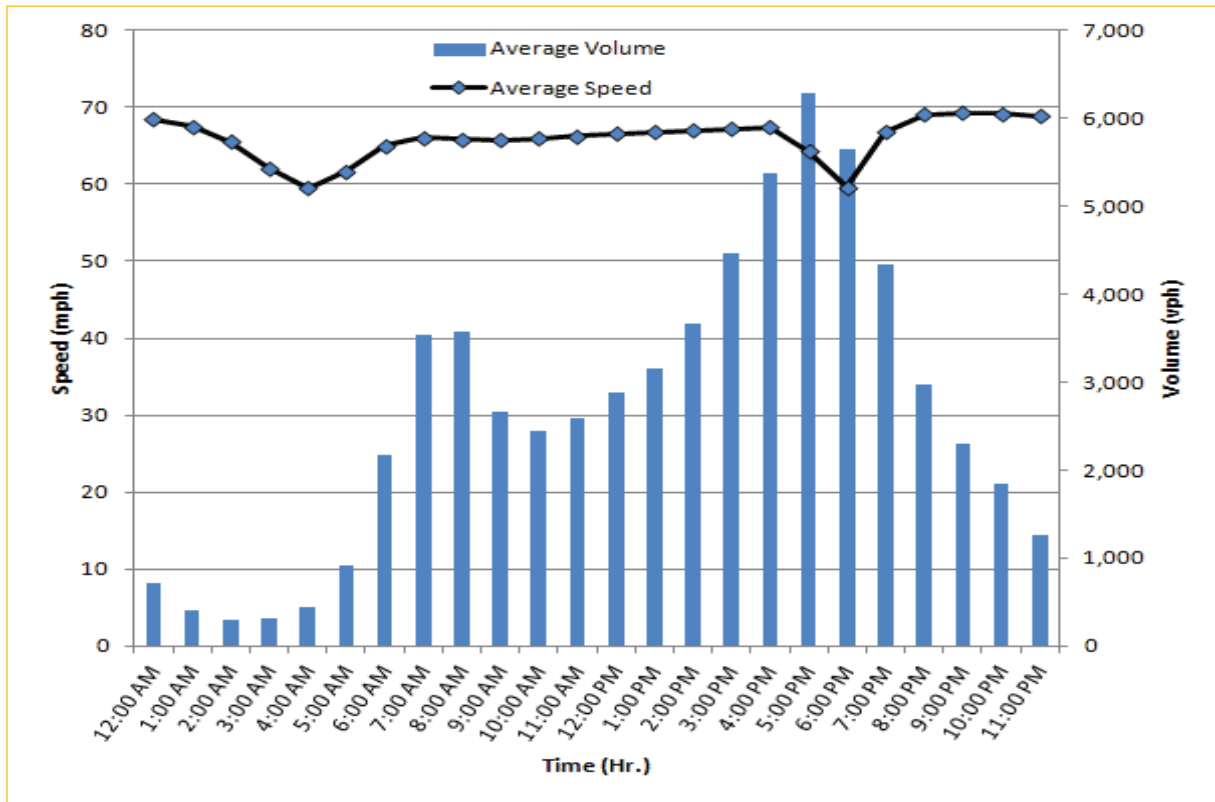


\* Twelve-month average from April 1<sup>st</sup>, 2014 to March 31<sup>st</sup>, 2015.

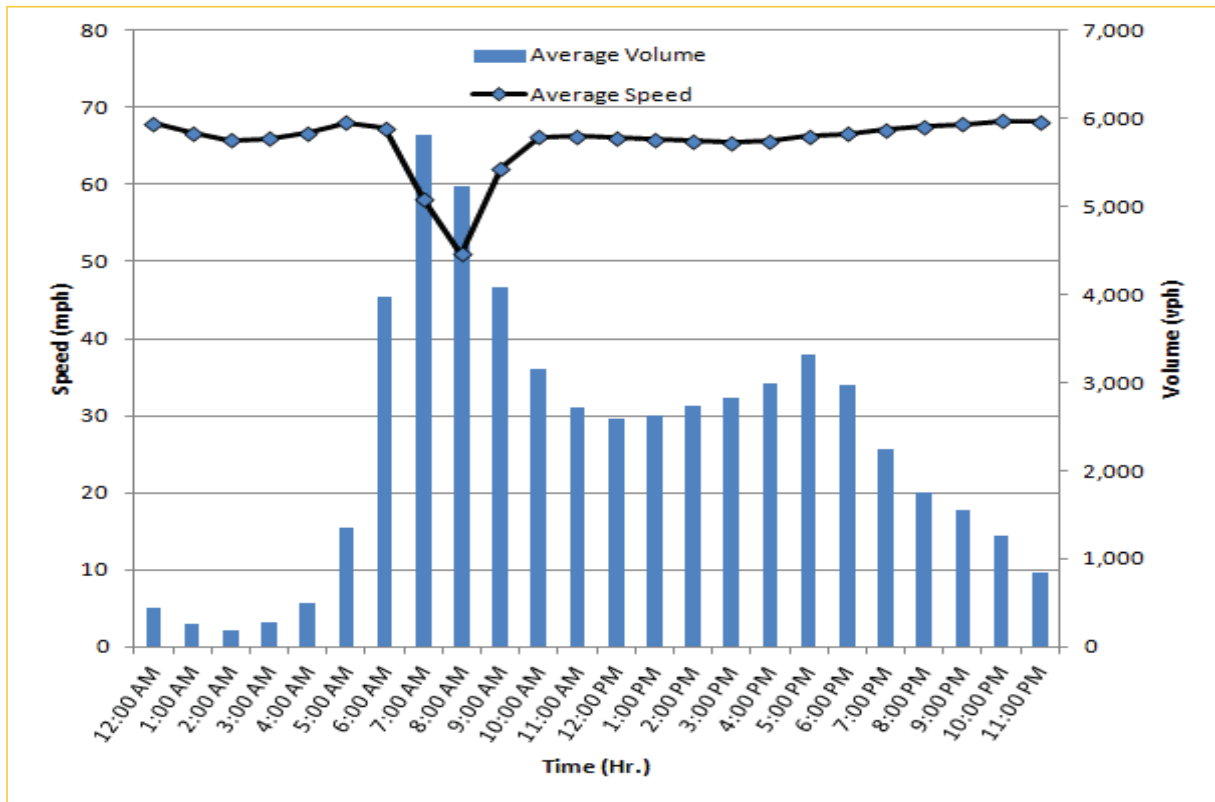
# TRAVEL TIME RELIABILITY REPORT

## Weekdays Speeds and Volumes by Time of Day\*

**I-75 Northbound: 5.4 Miles**  
From: West of SR 826  
To: North of Florida's Turnpike



**I-75 Southbound: 5.4 Miles**  
From: North of Florida's Turnpike  
To: West of SR 826


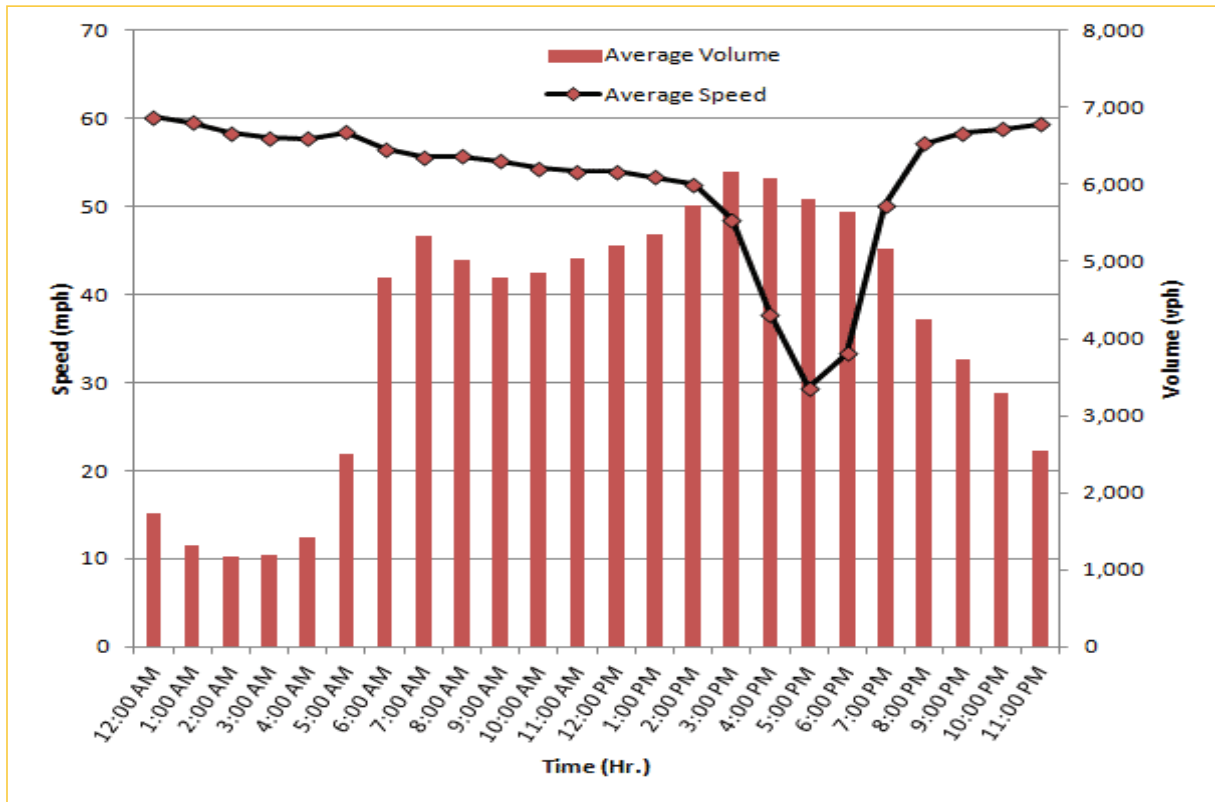


\* Twelve-month average from April 1<sup>st</sup>, 2014 to March 31<sup>st</sup>, 2015.

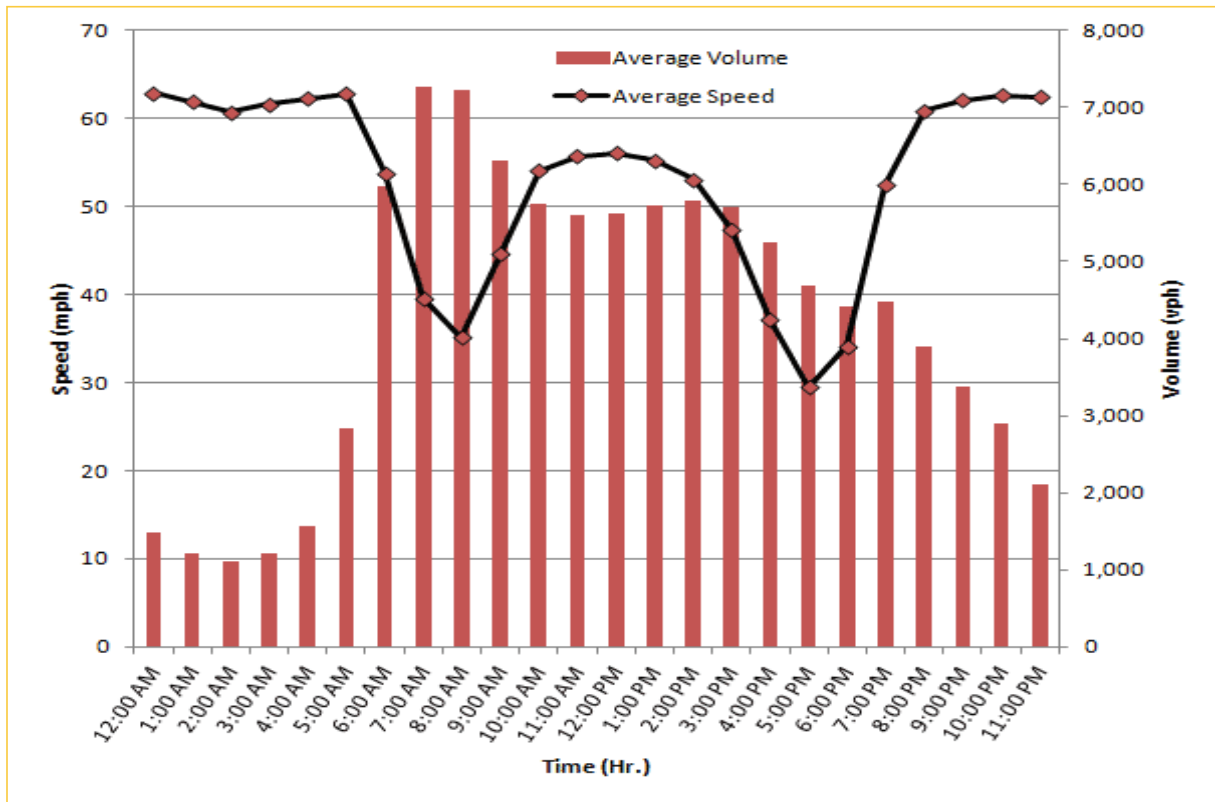
# TRAVEL TIME RELIABILITY REPORT

## Weekdays Speeds and Volumes by Time of Day\*

**SR 826 Northbound: 8.4 Miles**  
From: South of NW 25 Street  
To: North of NW 154 Street

**SR 826 Southbound: 8.4 Miles**  
From: North of NW 154 Street  
To: South of NW 25 Street

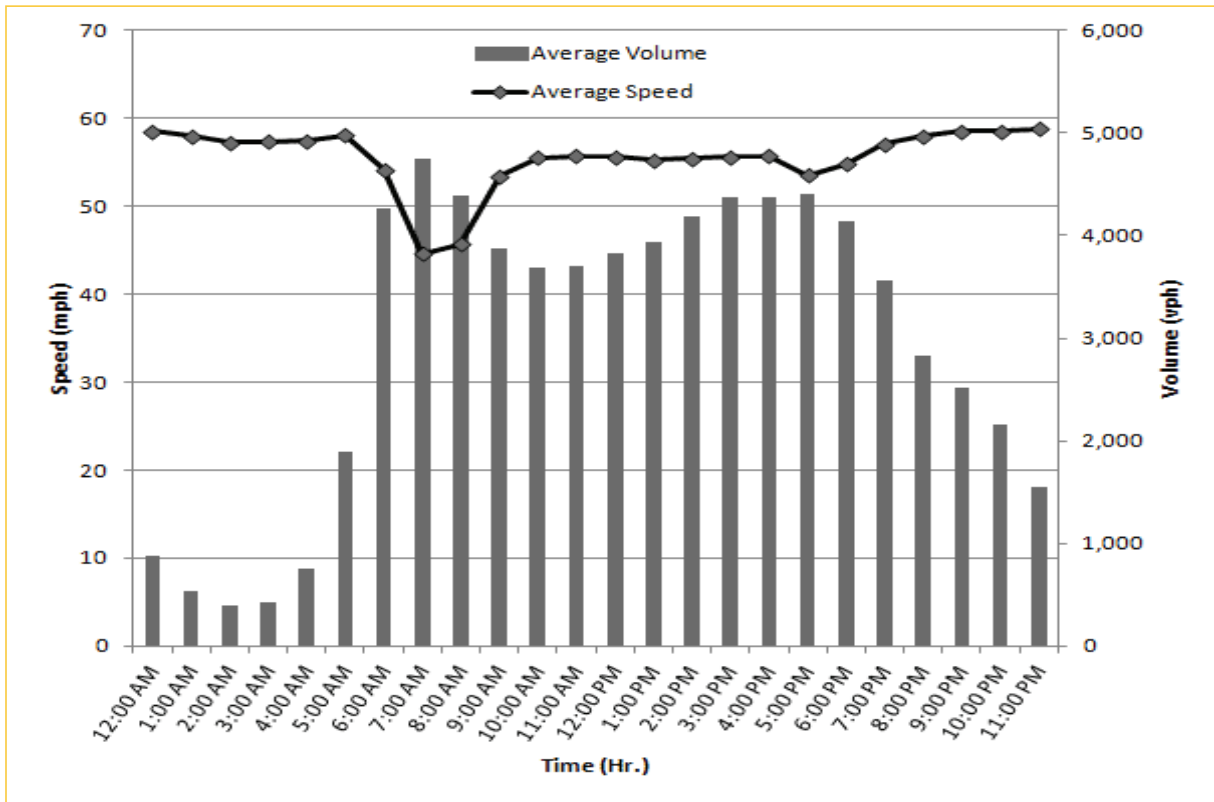



\* Twelve-month average from April 1<sup>st</sup>, 2014 to March 31<sup>st</sup>, 2015.

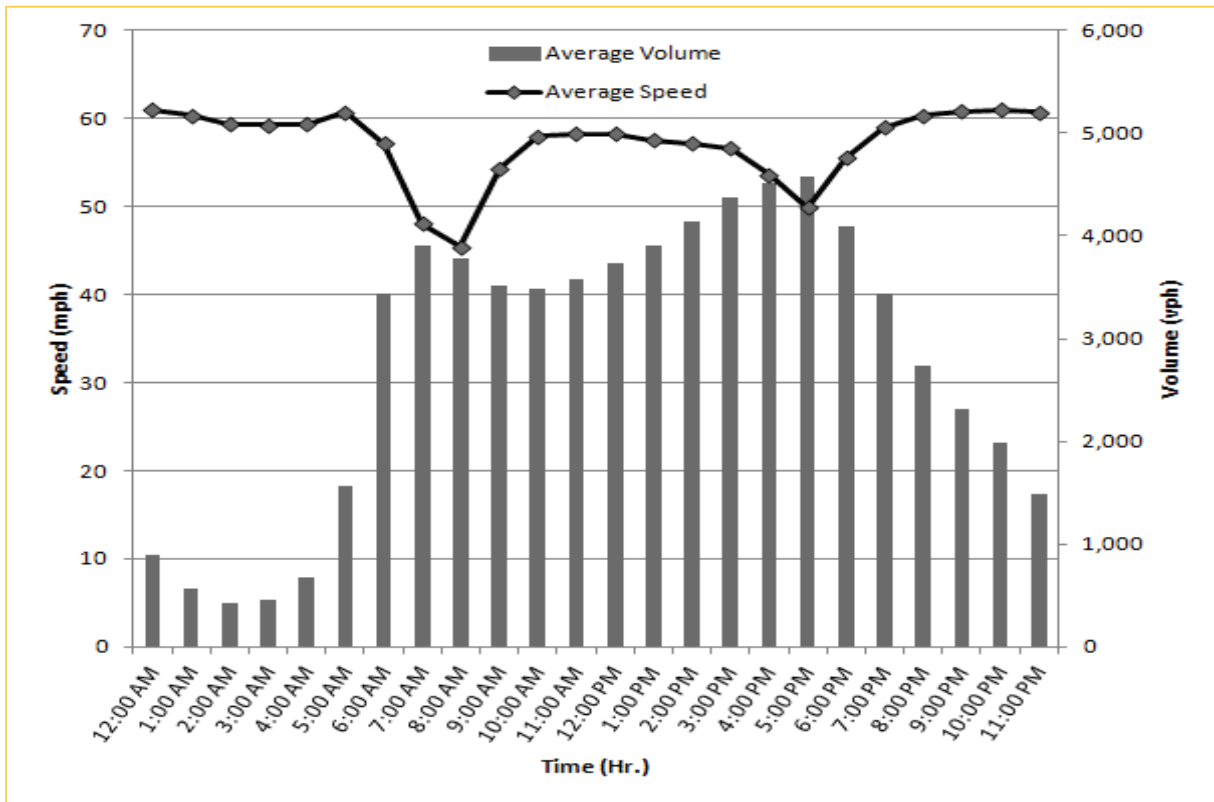
# TRAVEL TIME RELIABILITY REPORT

## Weekdays Speeds and Volumes by Time of Day\*

SR 826 Eastbound: 7.1 Miles  
From: West of NW 67 Avenue  
To: East of NW 12 Avenue

SR 826 Westbound: 7.1 Miles  
From: East of NW 12 Avenue  
To: West of NW 67 Avenue

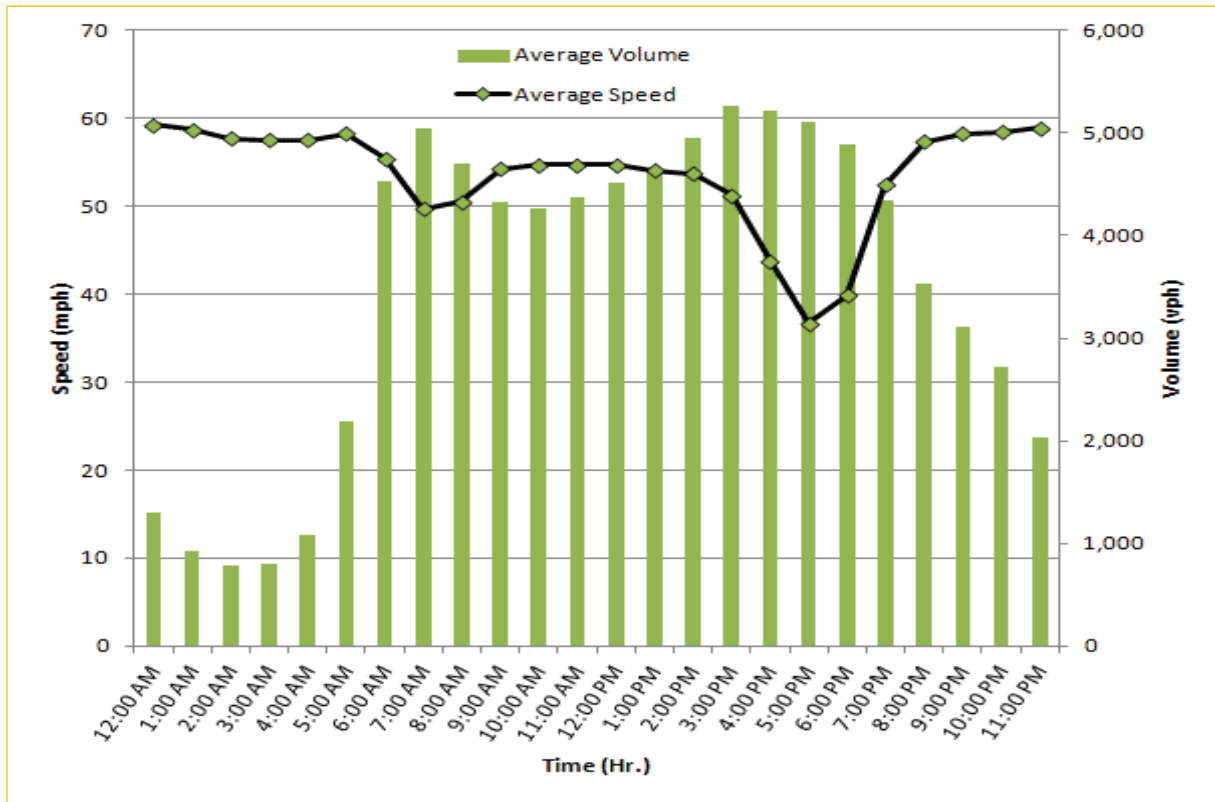



\* Twelve-month average from April 1<sup>st</sup>, 2014 to March 31<sup>st</sup>, 2015.

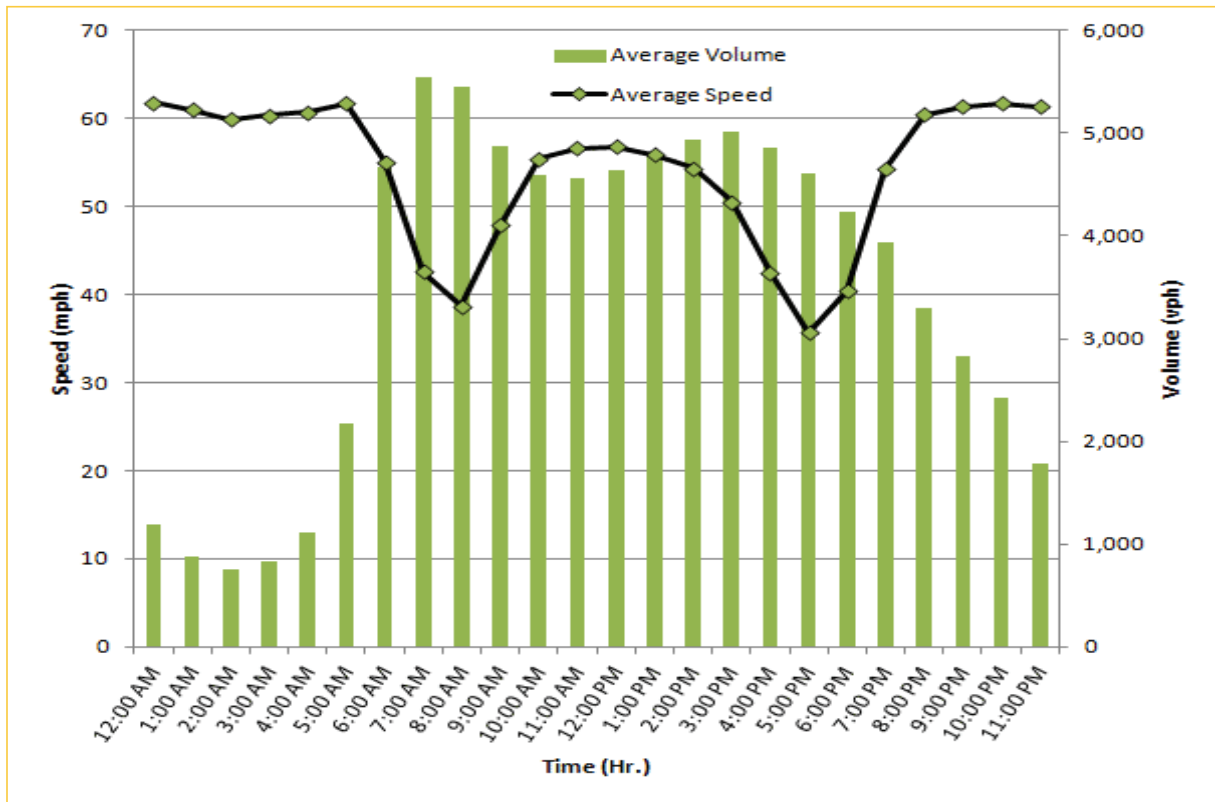
# TRAVEL TIME RELIABILITY REPORT

## Weekdays Speeds and Volumes by Time of Day\*

SR 826 Northbound/Eastbound : 15.6 Miles  
From: South of NW 25 Street  
To: East of NW 12 Avenue

SR 826 Southbound/Westbound: 15.6 Miles  
From: East of NW 12 Avenue  
To: South of NW 25 Street

\* Twelve-month average from April 1<sup>st</sup>, 2014 to March 31<sup>st</sup>, 2015.