

TRAVEL TIME RELIABILITY REPORT

Travel Time Index by Roadway*

Time	I-95		I-195		I-75		SR 826					
	NB	SB	EB	WB	NB	SB	NB	EB	NB/EB	SB	WB	SB/WB
0:00	1.09	1.22	1.09	1.03	0.99	0.98	0.99	1.01	0.99	1.00	0.98	0.98
1:00	1.08	1.17	1.09	1.02	1.01	1.00	1.00	1.02	1.00	1.01	0.99	1.00
2:00	1.08	1.17	1.10	1.03	1.04	1.02	1.02	1.03	1.02	1.03	1.01	1.02
3:00	1.07	1.18	1.10	1.04	1.10	1.02	1.03	1.03	1.02	1.02	1.01	1.01
4:00	1.06	1.15	1.09	1.03	1.15	1.01	1.04	1.03	1.03	1.01	1.01	1.01
5:00	1.04	1.11	1.08	1.02	1.11	0.99	1.03	1.02	1.01	1.00	0.99	0.99
6:00	1.04	1.24	1.10	1.00	1.05	1.00	1.06	1.10	1.07	1.19	1.06	1.12
7:00	1.06	1.74	1.17	1.01	1.04	1.22	1.09	1.39	1.21	1.64	1.31	1.48
8:00	1.10	2.04	1.44	1.06	1.05	1.45	1.10	1.35	1.19	1.85	1.41	1.64
9:00	1.06	1.65	1.31	1.05	1.04	1.13	1.10	1.13	1.10	1.49	1.17	1.33
10:00	1.07	1.31	1.14	1.06	1.03	1.02	1.12	1.07	1.08	1.19	1.06	1.12
11:00	1.08	1.24	1.12	1.07	1.03	1.01	1.12	1.07	1.08	1.14	1.04	1.08
12:00	1.10	1.22	1.13	1.08	1.02	1.01	1.11	1.07	1.08	1.13	1.04	1.08
13:00	1.12	1.21	1.13	1.07	1.02	1.02	1.13	1.09	1.10	1.15	1.08	1.11
14:00	1.17	1.22	1.18	1.08	1.02	1.02	1.15	1.08	1.11	1.21	1.07	1.14
15:00	1.37	1.24	1.23	1.16	1.01	1.03	1.26	1.08	1.16	1.39	1.08	1.24
16:00	1.63	1.28	1.13	1.39	1.01	1.02	1.66	1.07	1.37	1.77	1.16	1.48
17:00	1.80	1.38	1.10	1.47	1.08	1.01	2.14	1.11	1.65	2.26	1.24	1.77
18:00	1.61	1.33	1.15	1.21	1.25	1.01	1.93	1.09	1.53	2.01	1.11	1.58
19:00	1.23	1.20	1.13	1.07	1.04	1.00	1.27	1.04	1.15	1.28	1.04	1.16
20:00	1.08	1.14	1.11	1.05	0.98	0.99	1.05	1.02	1.03	1.03	1.00	1.01
21:00	1.09	1.18	1.10	1.04	0.98	0.99	1.03	1.01	1.01	1.01	0.99	0.99
22:00	1.12	1.43	1.11	1.04	0.98	0.98	1.01	1.01	1.00	1.01	0.98	0.99
23:00	1.13	1.42	1.10	1.03	0.98	0.98	1.00	1.00	0.99	1.00	0.98	0.99
FFS**	59 mph	59 mph	58 mph	62 mph	66 mph	66 mph	61 mph	57 mph	59 mph	63 mph	59 mph	61 mph

*Maximum Travel Time Index. ** FFS: Free Flow Speed*

Travel Time Index (TTI) is a measure of average conditions that indicates how much longer, **on average**, travel times are during congestion compared to during light traffic.

Real World Example: A TTI of 1.60 means that for a trip that usually takes 10 minutes in light traffic, a traveler should budget for an additional 6 minutes **on average**.

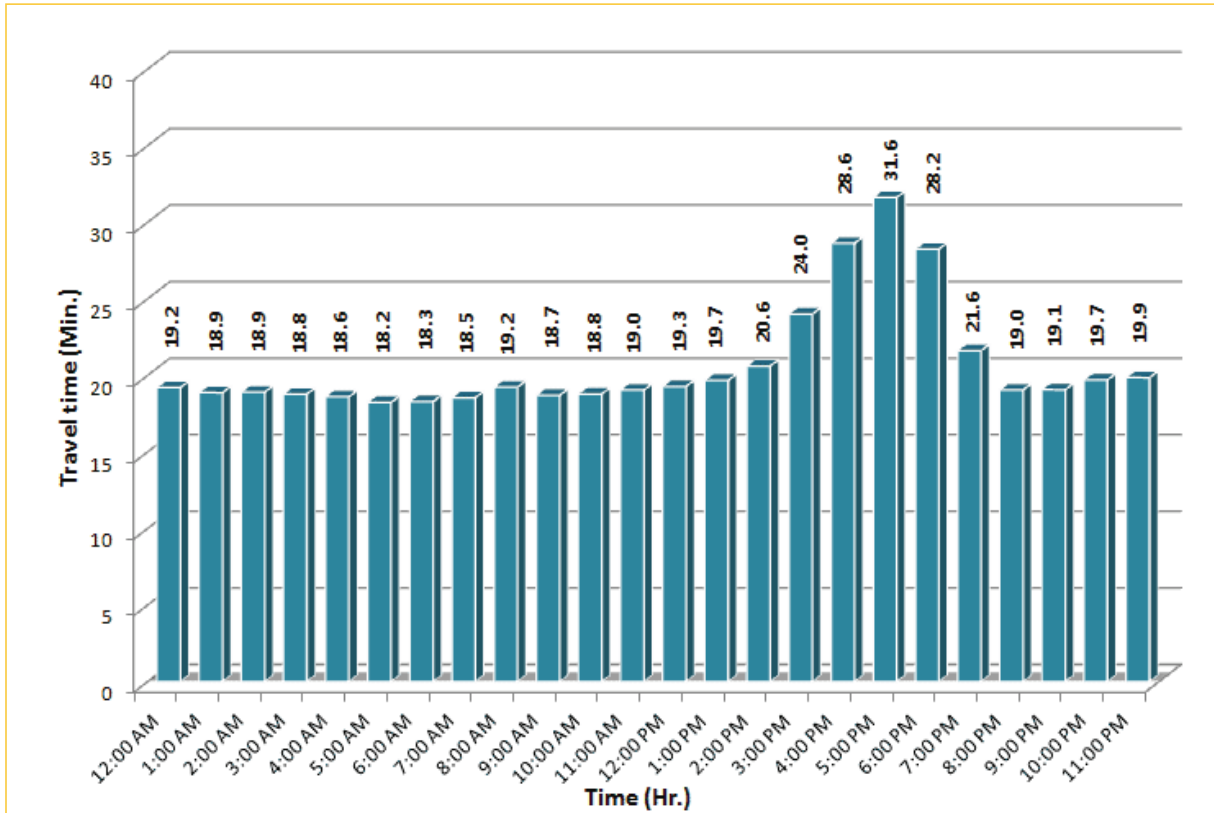


* Twelve-month average from March 1st, 2014 to February 28th, 2015.

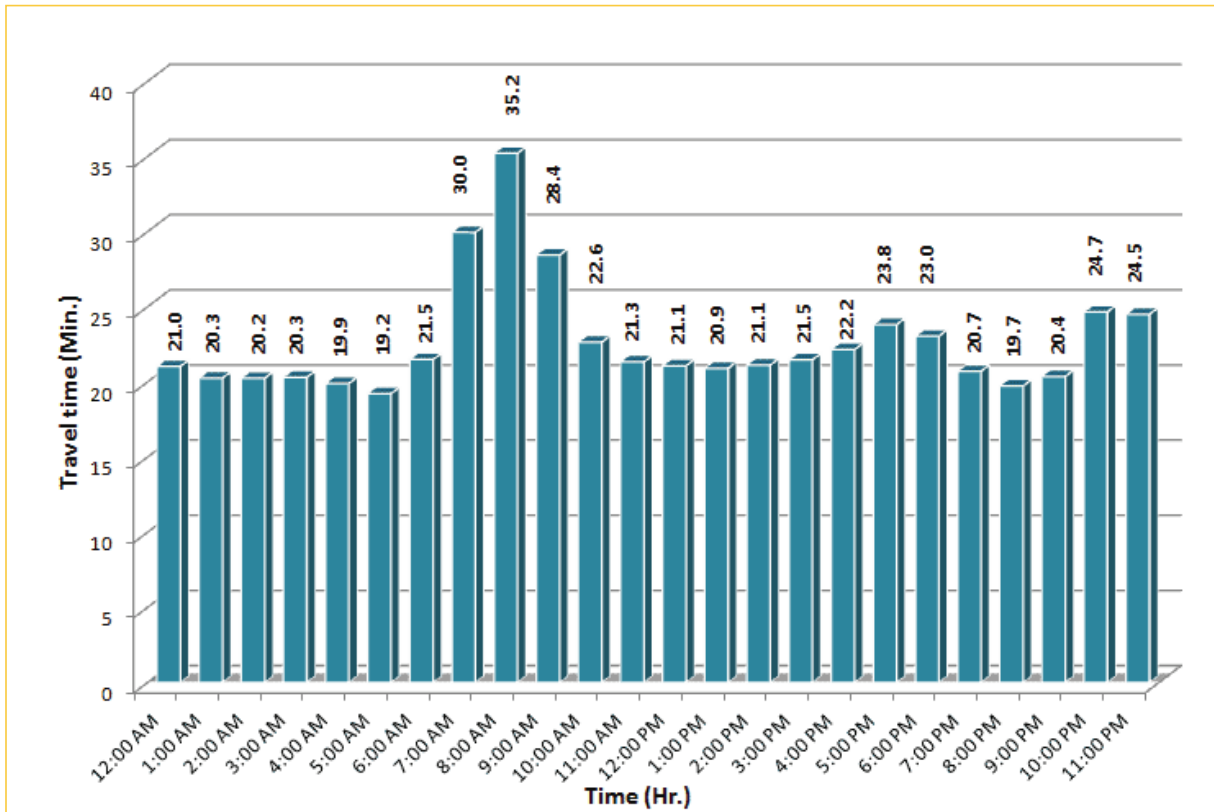
TRAVEL TIME RELIABILITY REPORT

Weekdays Travel Times by Time of Day*

I-95 Northbound: 17.3 Miles
From: US-1
To: Miami-Dade / Broward County Line

I-95 Southbound: 17.3 Miles
From: Miami-Dade / Broward County Line
To: US-1

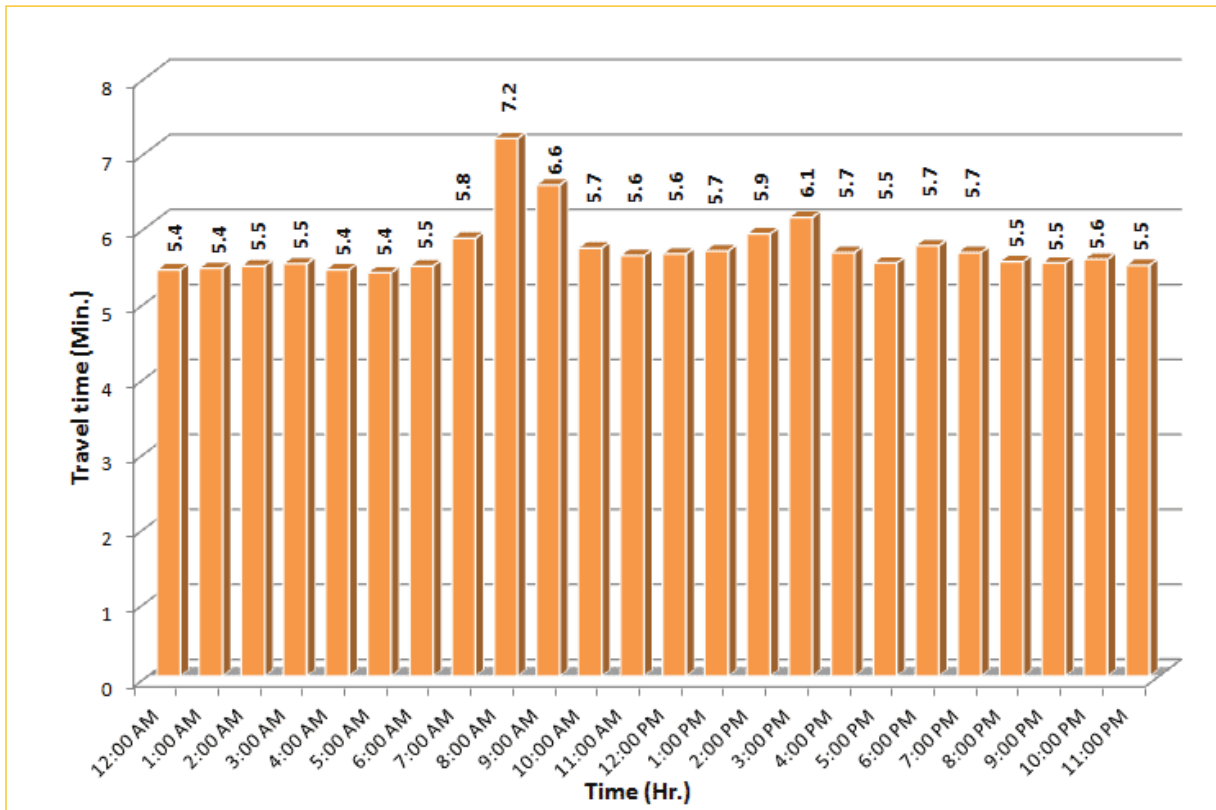
* Twelve-month average from March 1st, 2014 to February 28th, 2015.

Excludes express lanes.

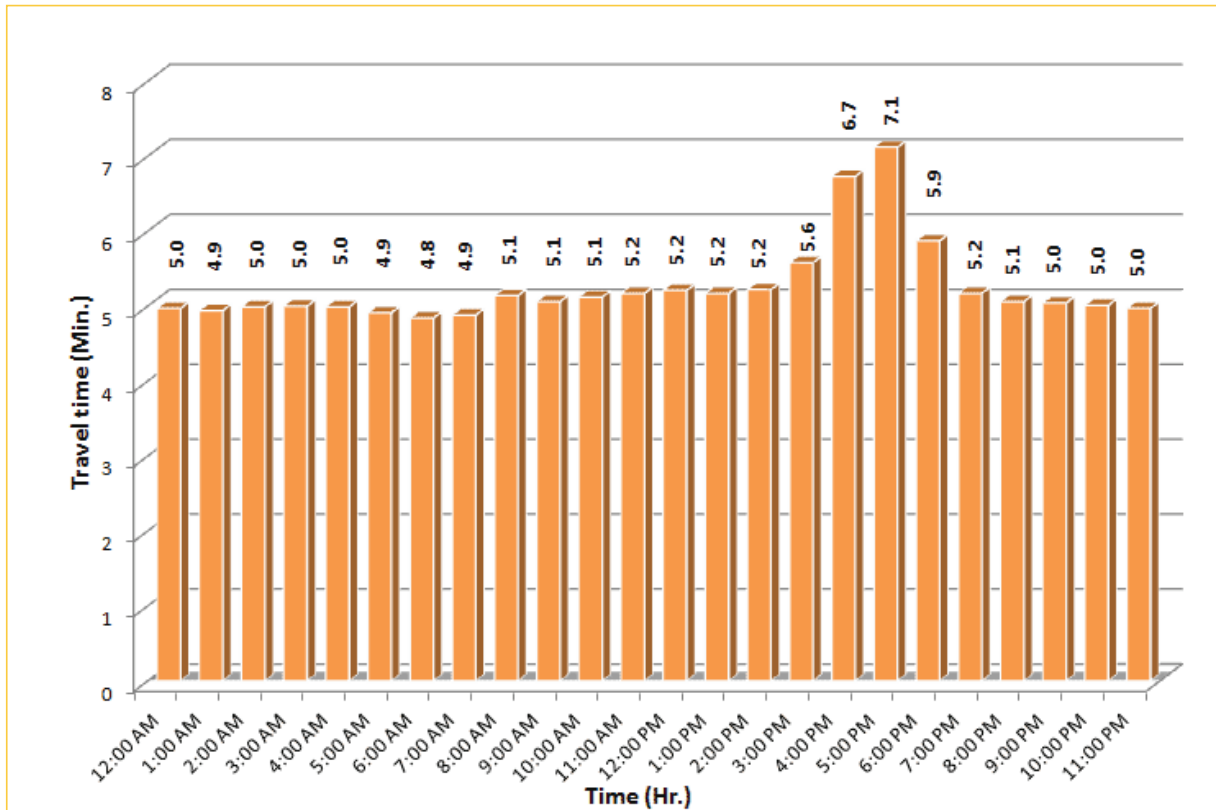
TRAVEL TIME RELIABILITY REPORT

Weekdays Travel Times by Time of Day*

I-195 Eastbound: 4.9 Miles
From: West of North Miami Avenue
To: West of Alton Road



I-195 Westbound: 4.9 Miles
From: West of Alton Road
To: West of North Miami Avenue


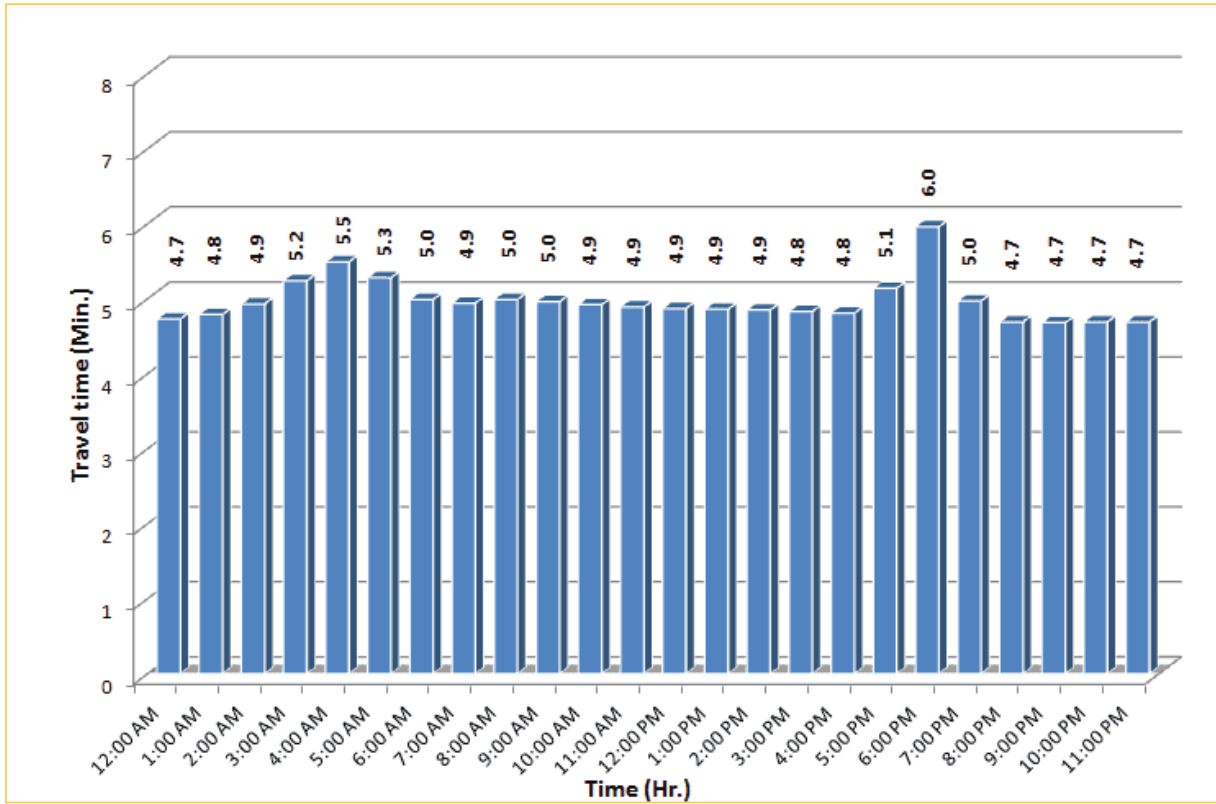


* Twelve-month average from March 1st, 2014 to February 28th, 2015.

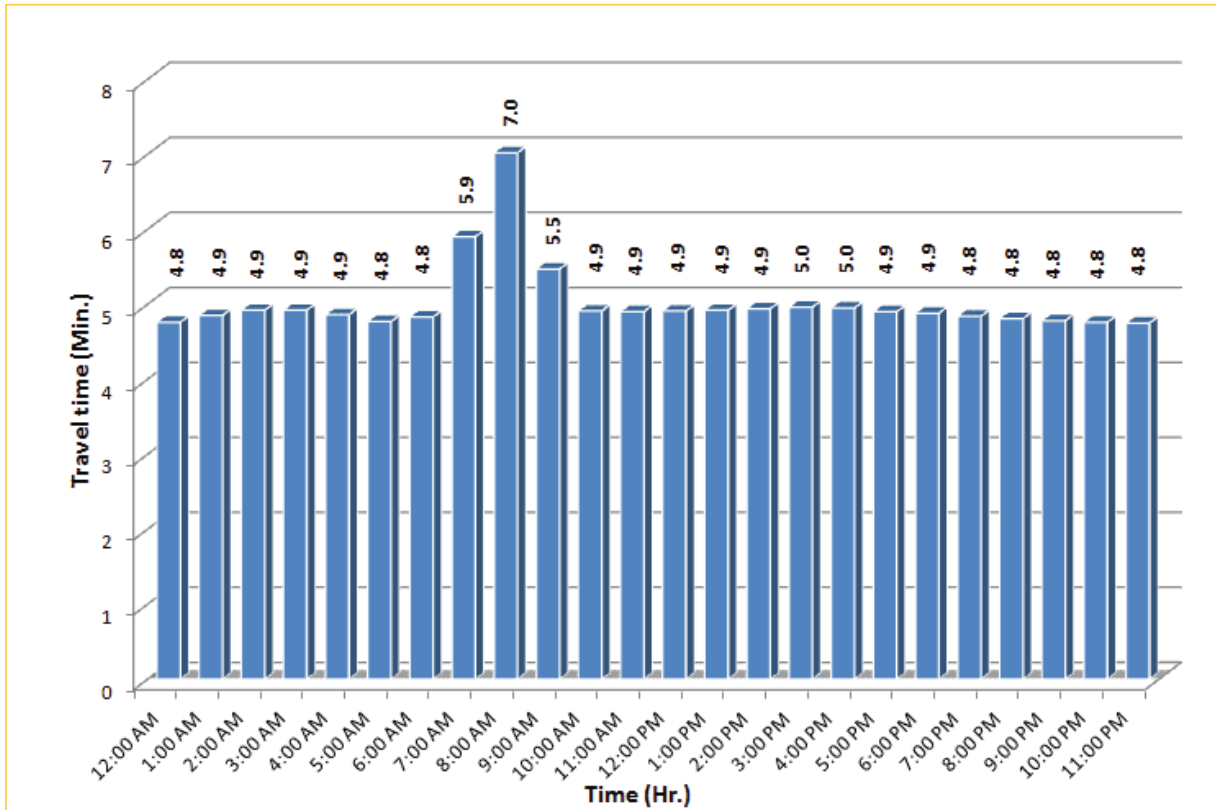
TRAVEL TIME RELIABILITY REPORT

Weekdays Travel Times by Time of Day*

I-75 Northbound: 5.4 Miles
From: West of SR 826
To: North of Florida's Turnpike

I-75 Southbound: 5.4 Miles
From: North of Florida's Turnpike
To: West of SR 826


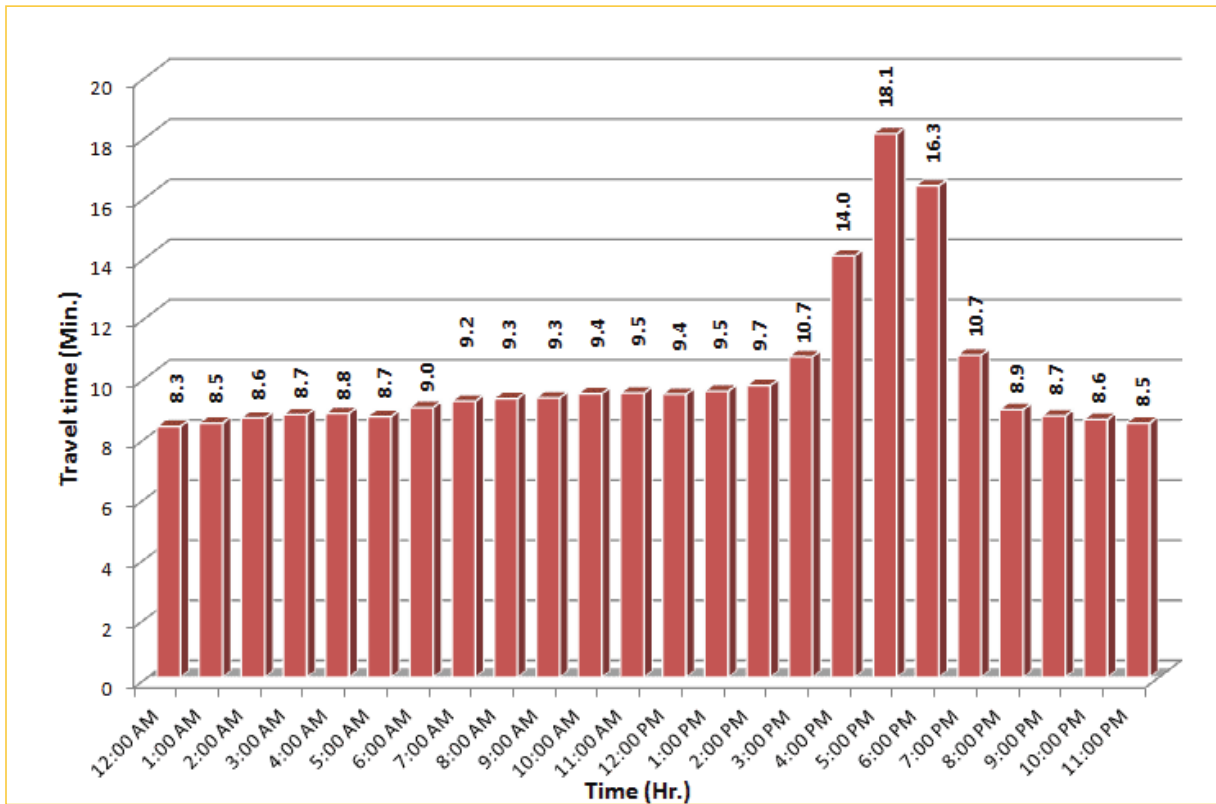



* Twelve-month average from March 1st, 2014 to February 28th, 2015.


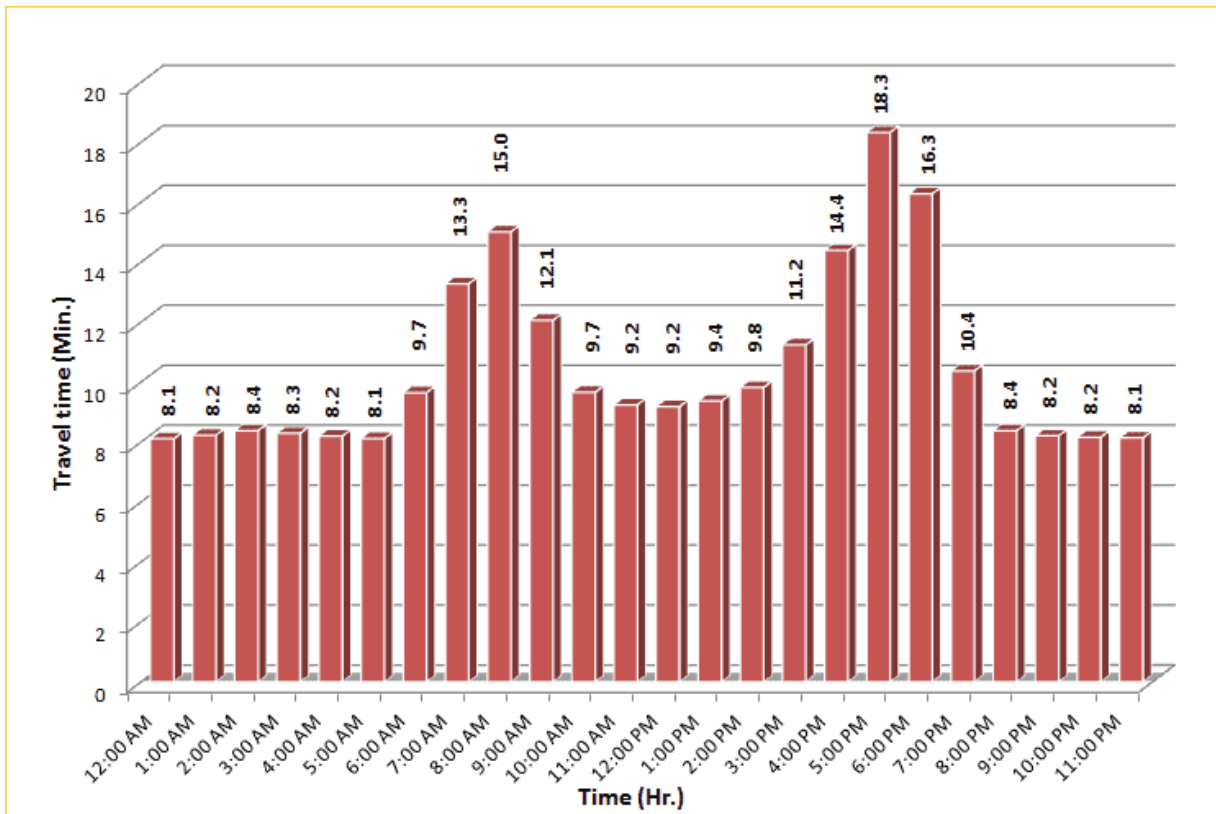
TRAVEL TIME RELIABILITY REPORT

Weekdays Travel Times by Time of Day*

SR 826 Northbound: 8.4 Miles
From: South of NW 25 Street
To: North of NW 154 Street

SR 826 Southbound: 8.4 Miles
From: North of NW 154 Street
To: South of NW 25 Street

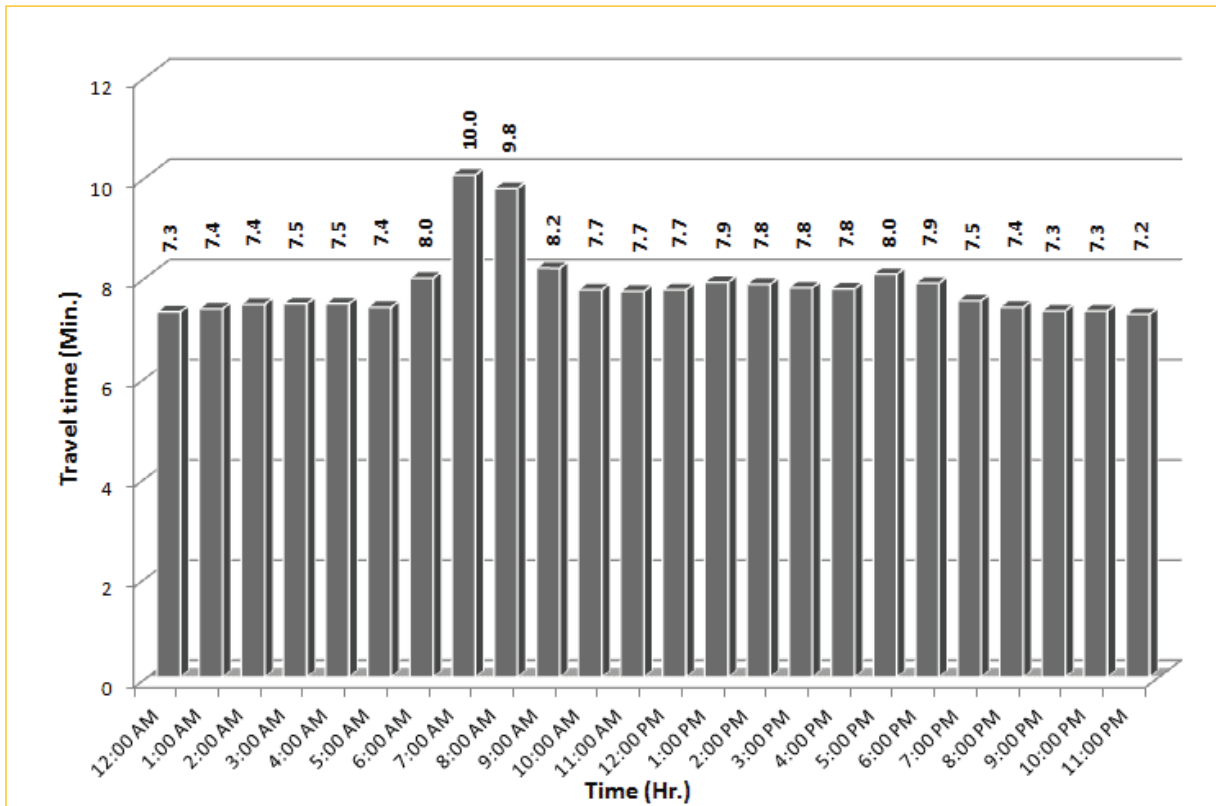



* Twelve-month average from March 1st, 2014 to February 28th, 2015.

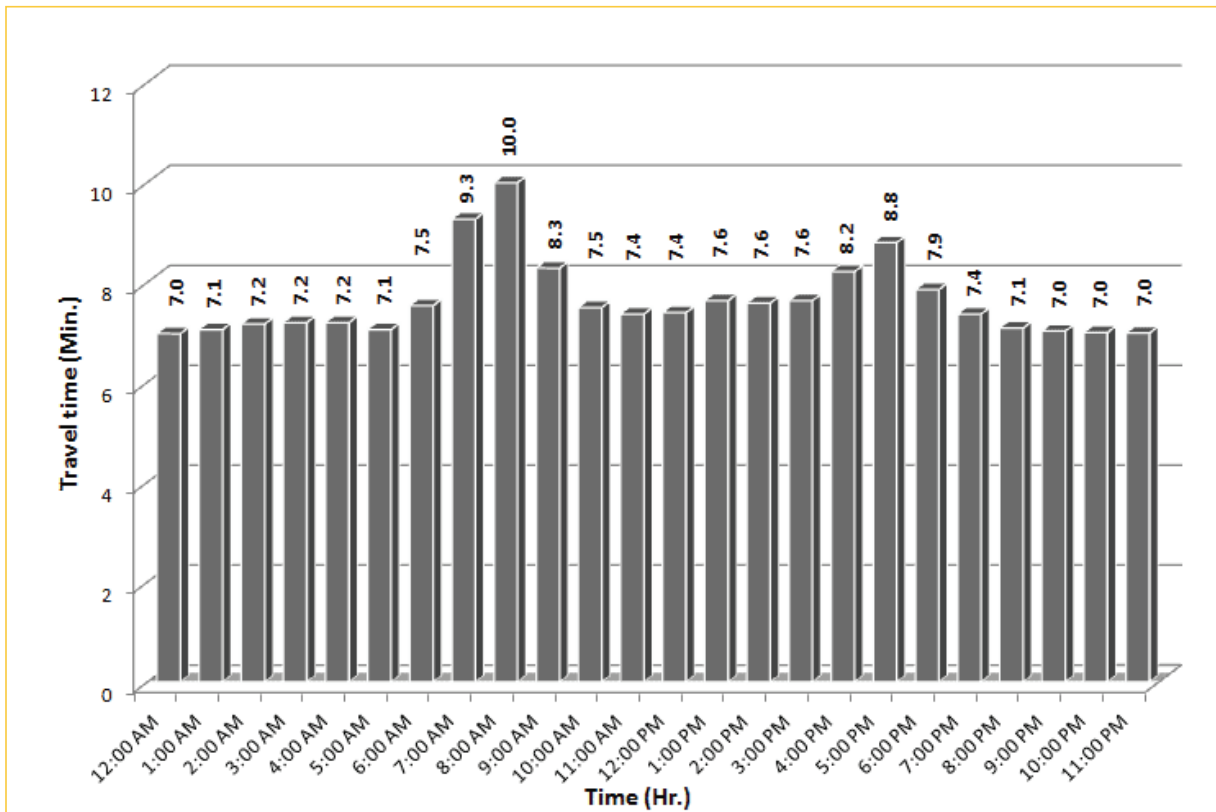
TRAVEL TIME RELIABILITY REPORT

Weekdays Travel Times by Time of Day*

SR 826 Eastbound: 7.1 Miles
From: West of NW 67 Avenue
To: East of NW 12 Avenue



SR 826 Westbound: 7.1 Miles
From: East of NW 12 Avenue
To: West of NW 67 Avenue

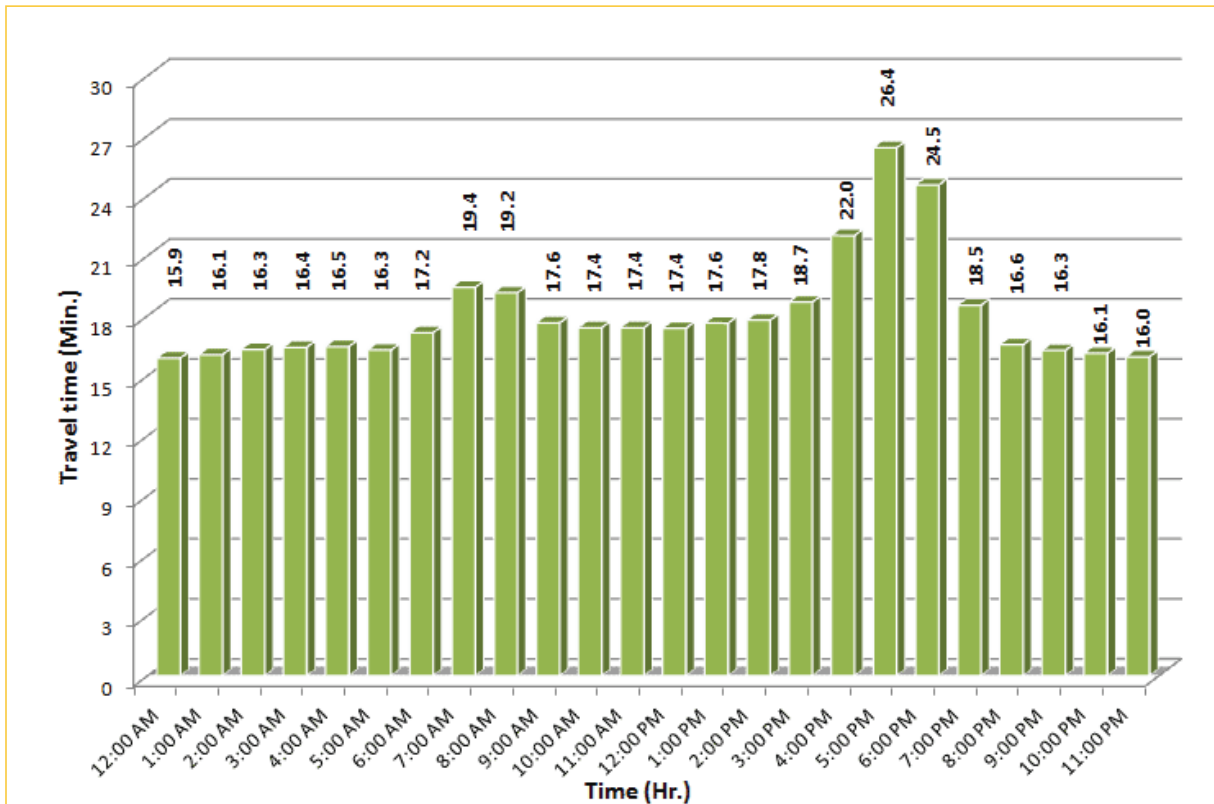


* Twelve-month average from March 1st, 2014 to February 28th, 2015.

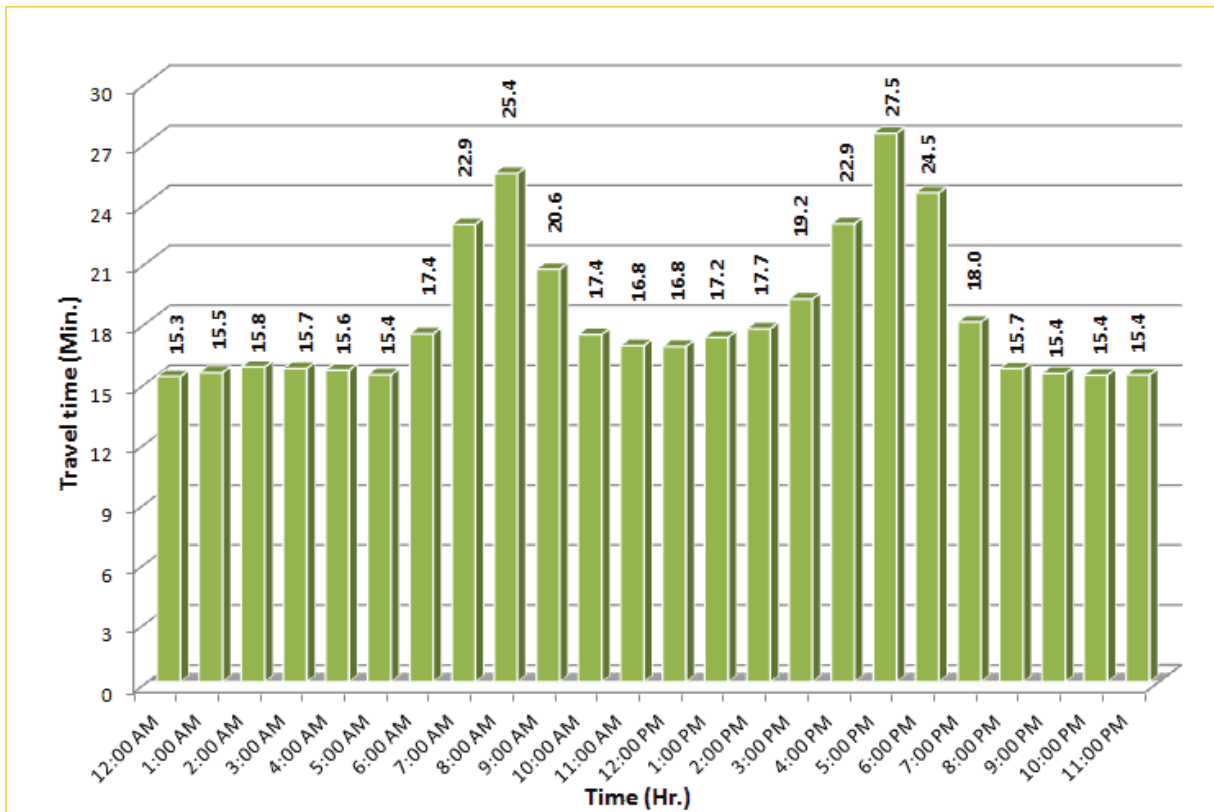
TRAVEL TIME RELIABILITY REPORT

Weekdays Travel Times by Time of Day*

SR 826 Northbound/Eastbound : 15.6 Miles
From: South of NW 25 Street
To: East of NW 12 Avenue

SR 826 Southbound/Westbound: 15.6 Miles
From: East of NW 12 Avenue
To: South of NW 25 Street

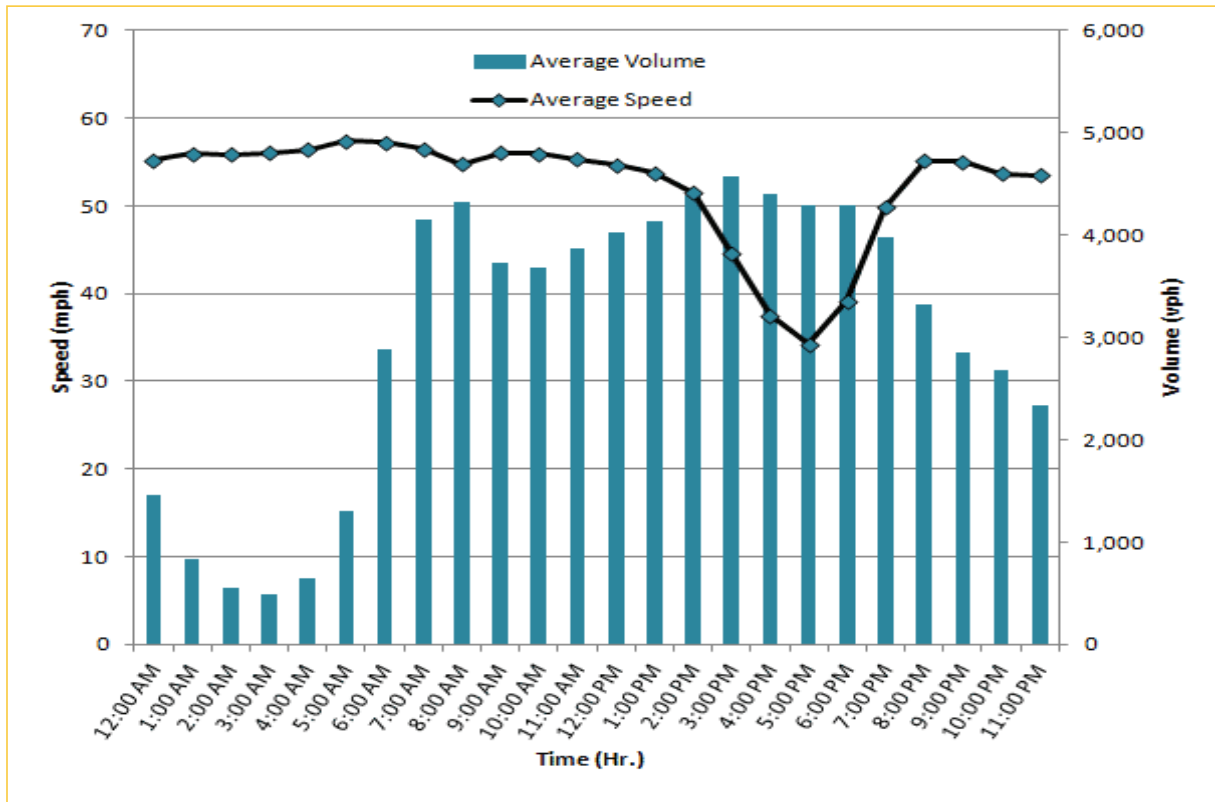



* Twelve-month average from March 1st, 2014 to February 28th, 2015.

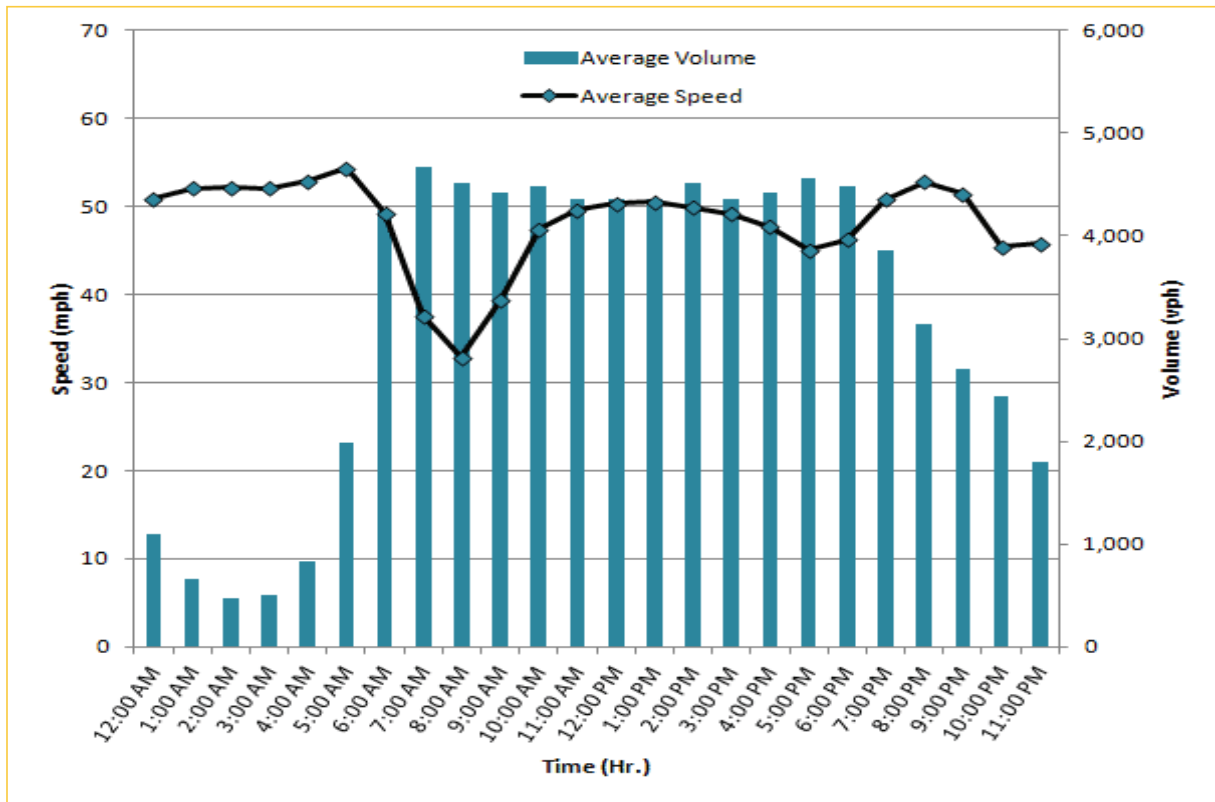
TRAVEL TIME RELIABILITY REPORT

Weekdays Speeds and Volumes by Time of Day*

I-95 Northbound: 17.3 Miles
From: US-1
To: Miami-Dade / Broward County Line

I-95 Southbound: 17.3 Miles
From: Miami-Dade / Broward County Line
To: US-1

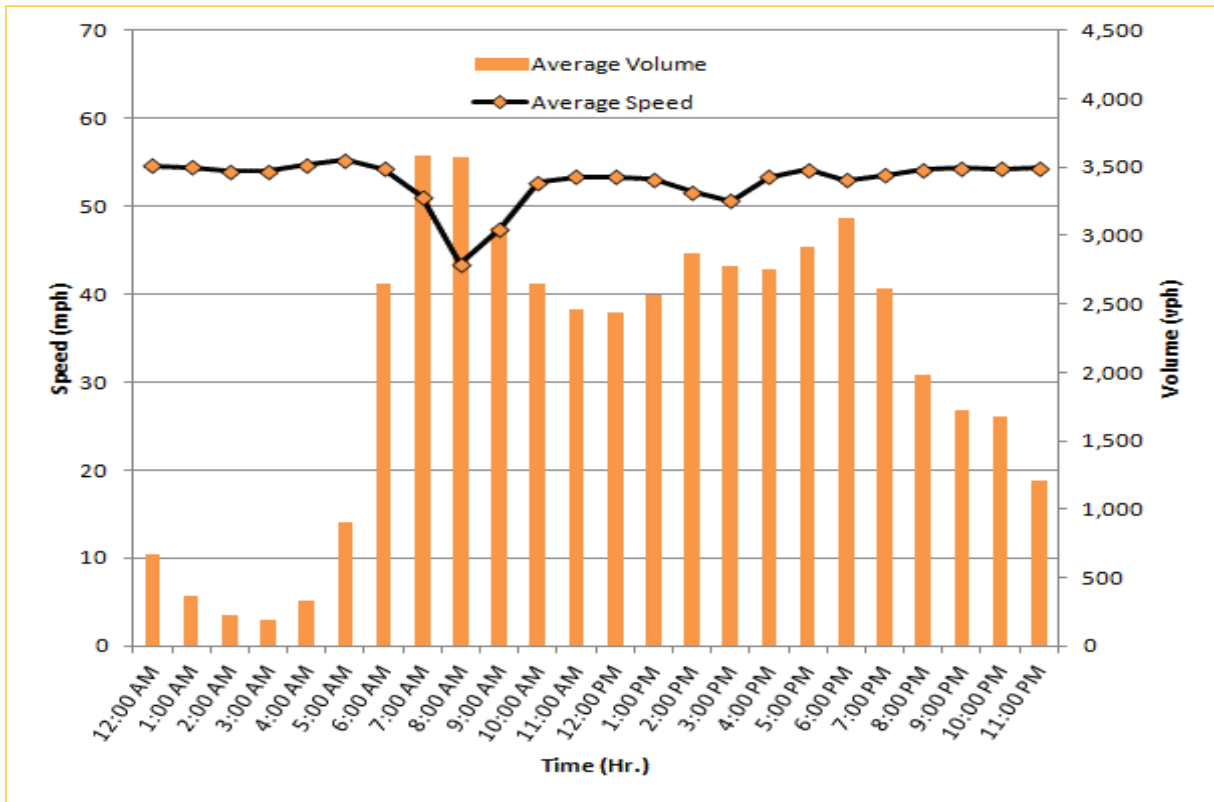
* Twelve-month average from March 1st, 2014 to February 28th, 2015.

Excludes express lanes.

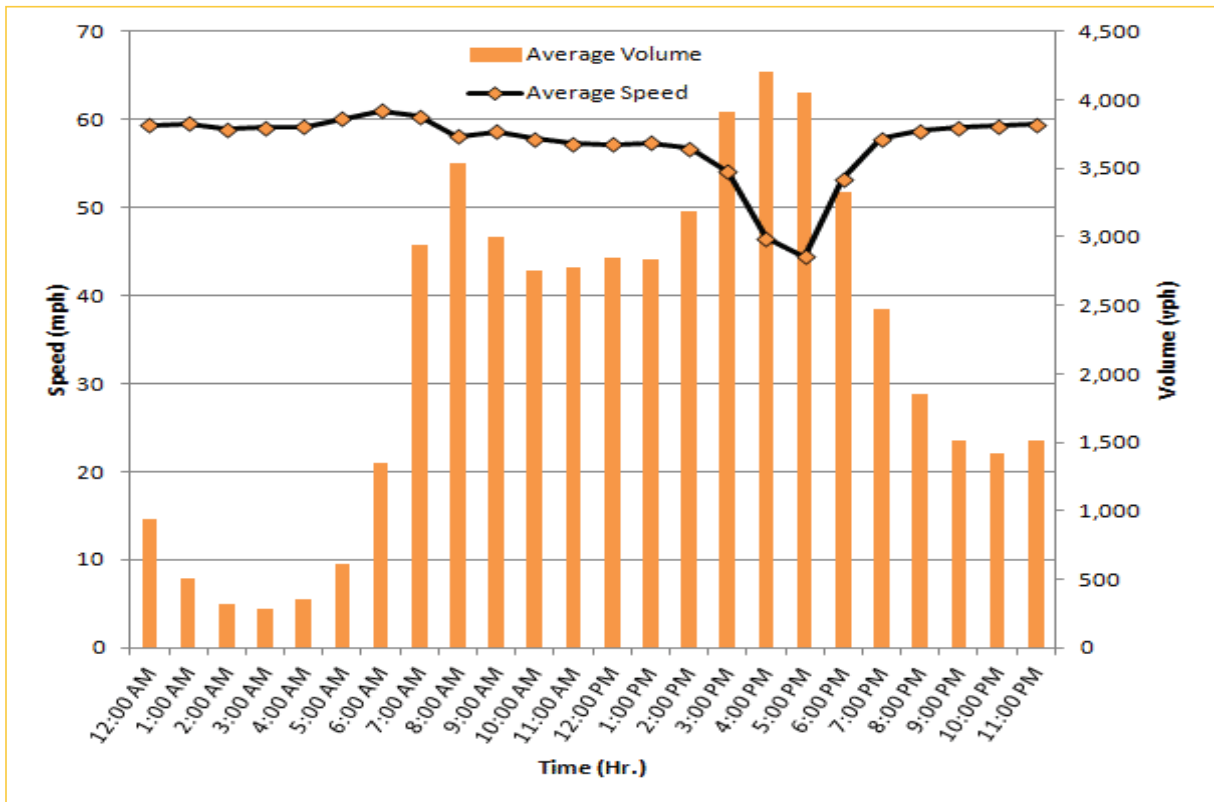
TRAVEL TIME RELIABILITY REPORT

Weekdays Speeds and Volumes by Time of Day*

I-195 Eastbound: 4.9 Miles
From: West of North Miami Avenue
To: West of Alton Road



I-195 Westbound: 4.9 Miles
From: West of Alton Road
To: West of North Miami Avenue

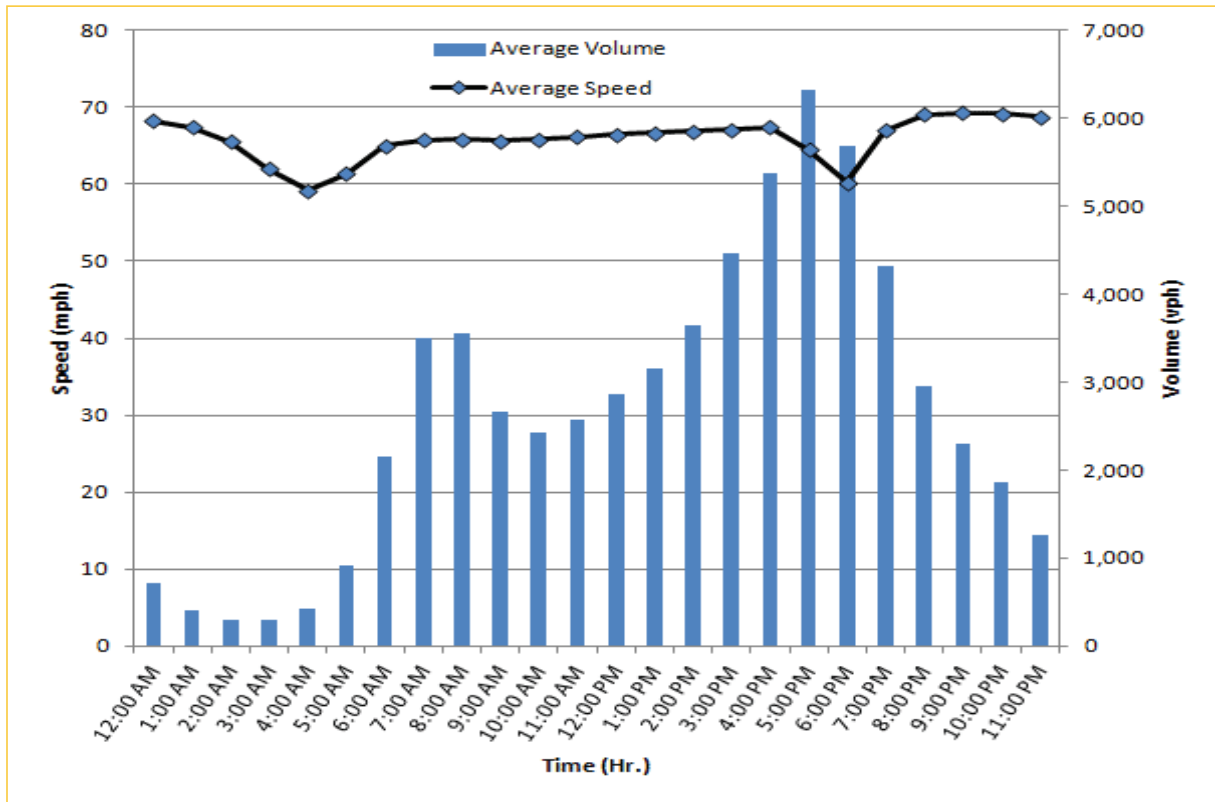


* Twelve-month average from March 1st, 2014 to February 28th, 2015.

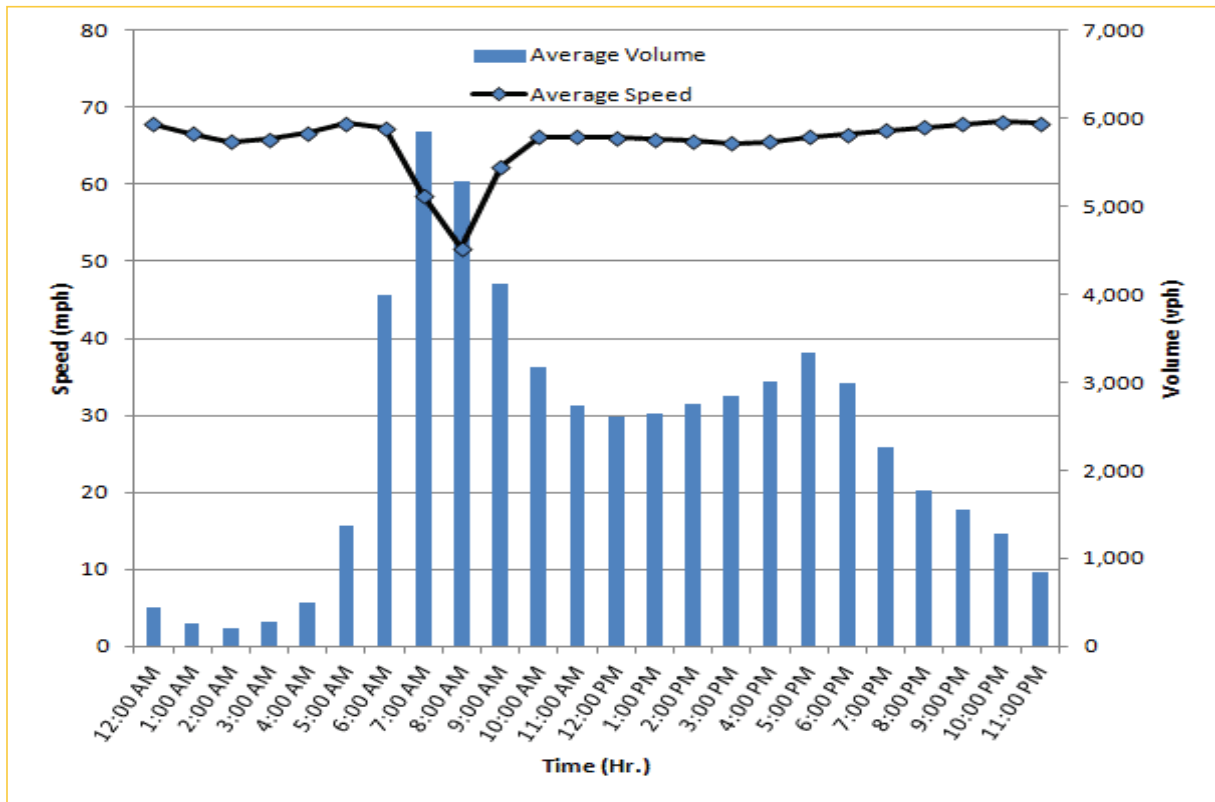
TRAVEL TIME RELIABILITY REPORT

Weekdays Speeds and Volumes by Time of Day*

I-75 Northbound: 5.4 Miles
From: West of SR 826
To: North of Florida's Turnpike



I-75 Southbound: 5.4 Miles
From: North of Florida's Turnpike
To: West of SR 826


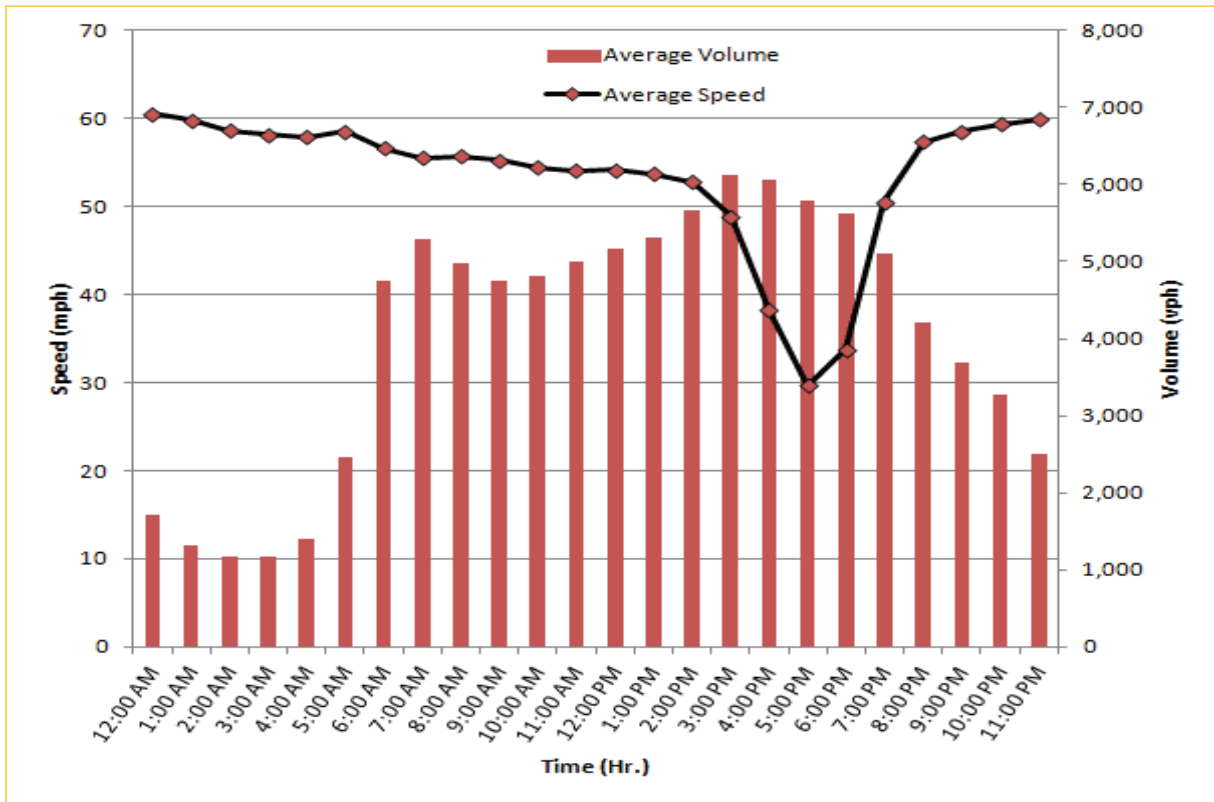


* Twelve-month average from March 1st, 2014 to February 28th, 2015.

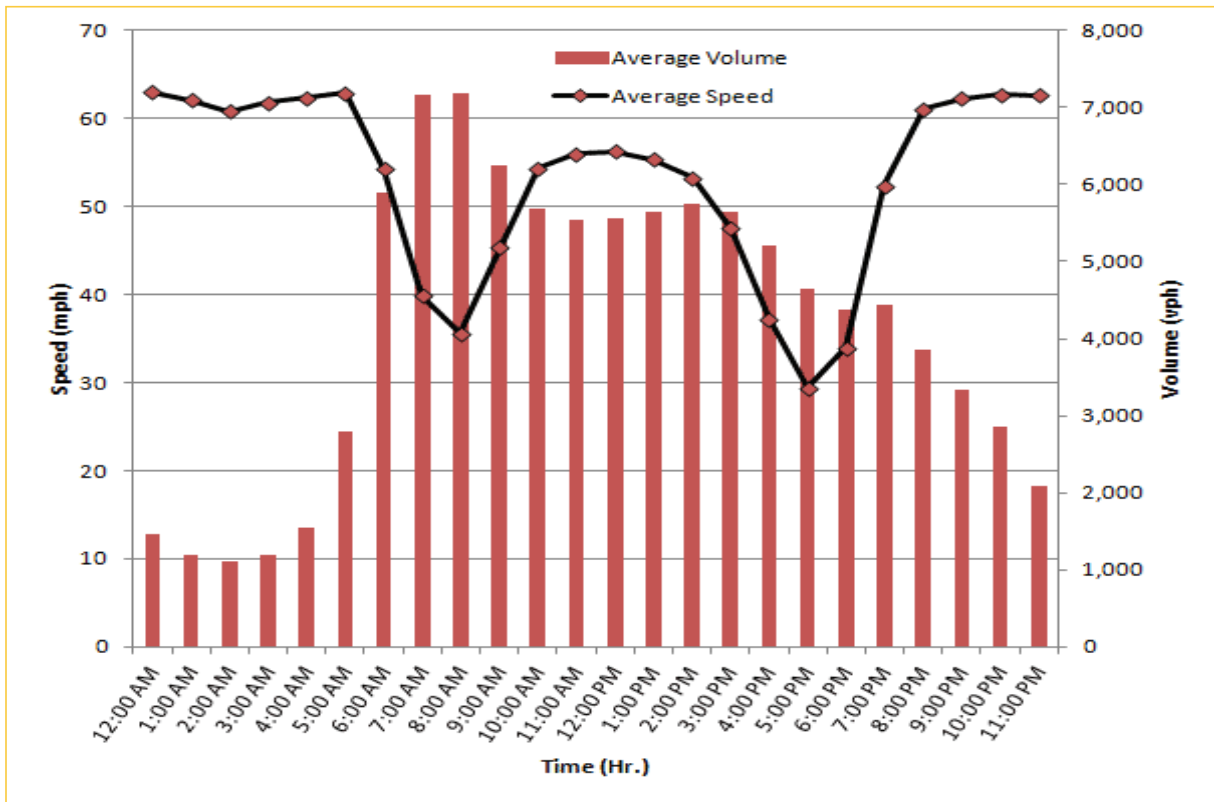
TRAVEL TIME RELIABILITY REPORT

Weekdays Speeds and Volumes by Time of Day*

SR 826 Northbound: 8.4 Miles
From: South of NW 25 Street
To: North of NW 154 Street

SR 826 Southbound: 8.4 Miles
From: North of NW 154 Street
To: South of NW 25 Street

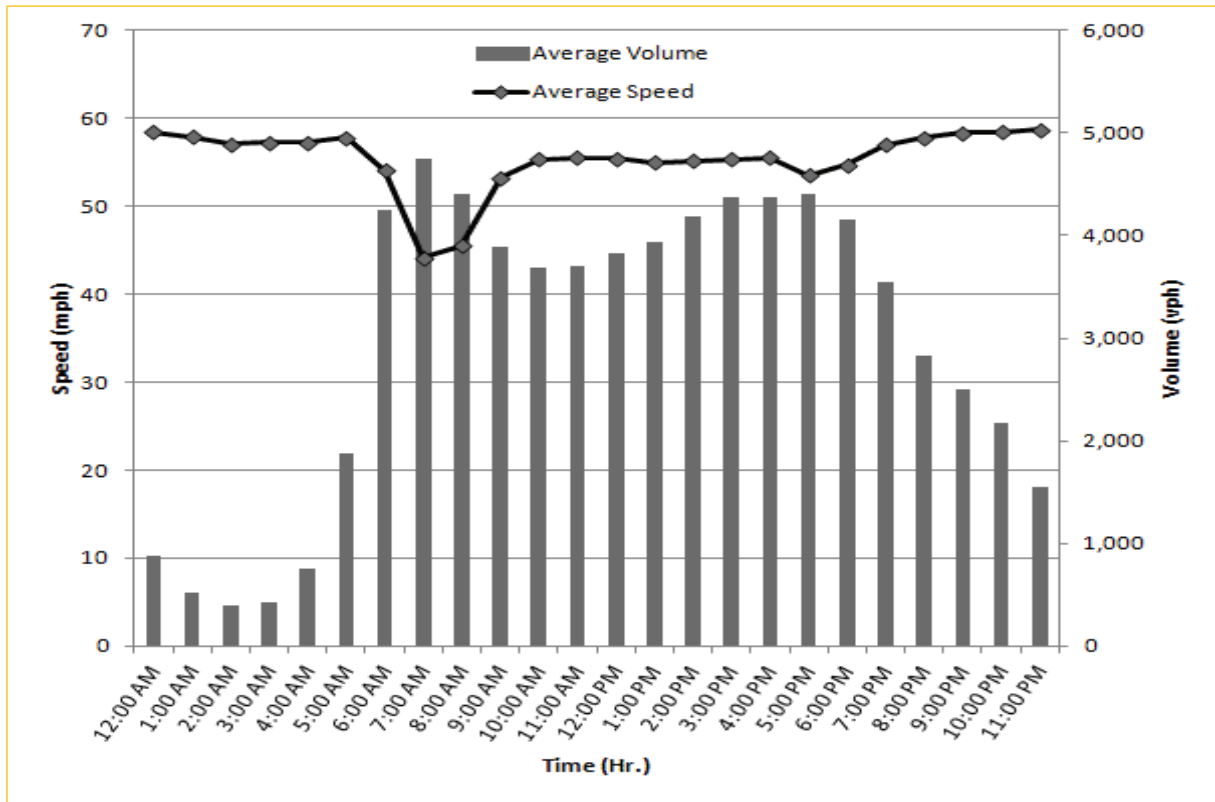



* Twelve-month average from March 1st, 2014 to February 28th, 2015.

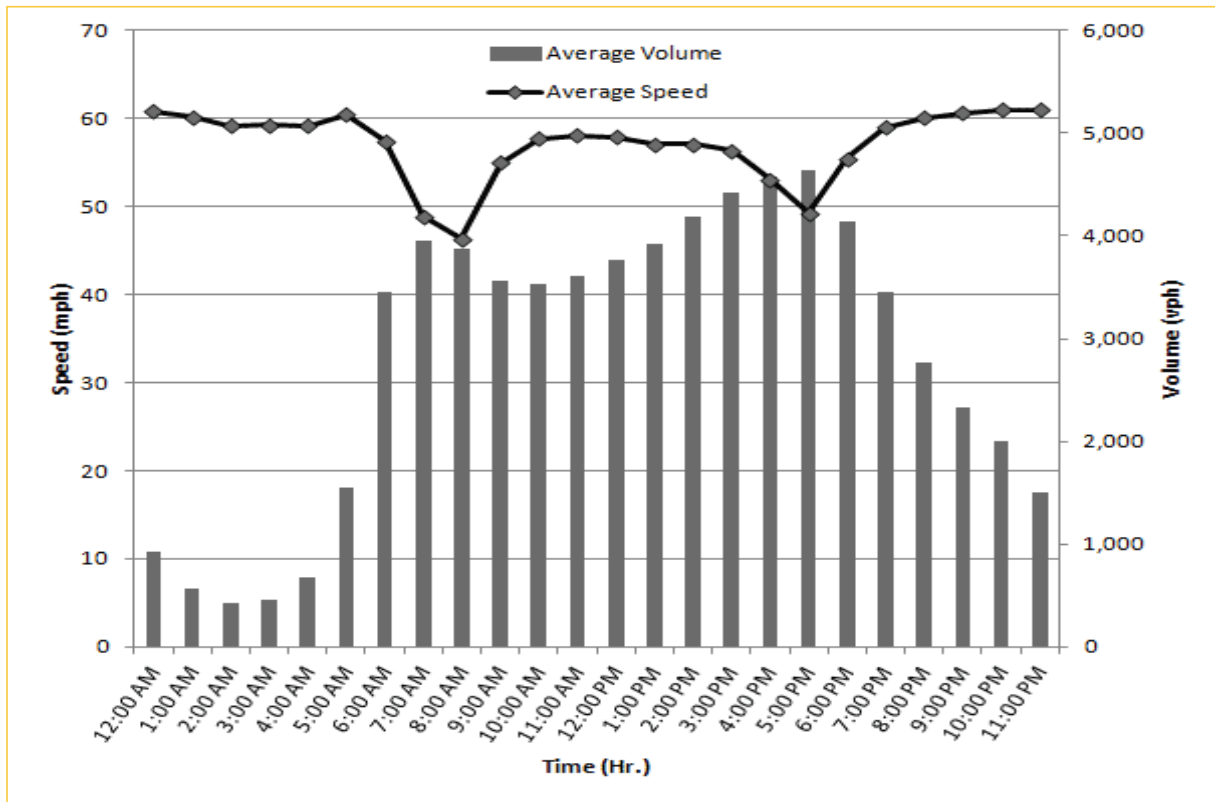
TRAVEL TIME RELIABILITY REPORT

Weekdays Speeds and Volumes by Time of Day*

SR 826 Eastbound: 7.1 Miles
From: West of NW 67 Avenue
To: East of NW 12 Avenue

SR 826 Westbound: 7.1 Miles
From: East of NW 12 Avenue
To: West of NW 67 Avenue

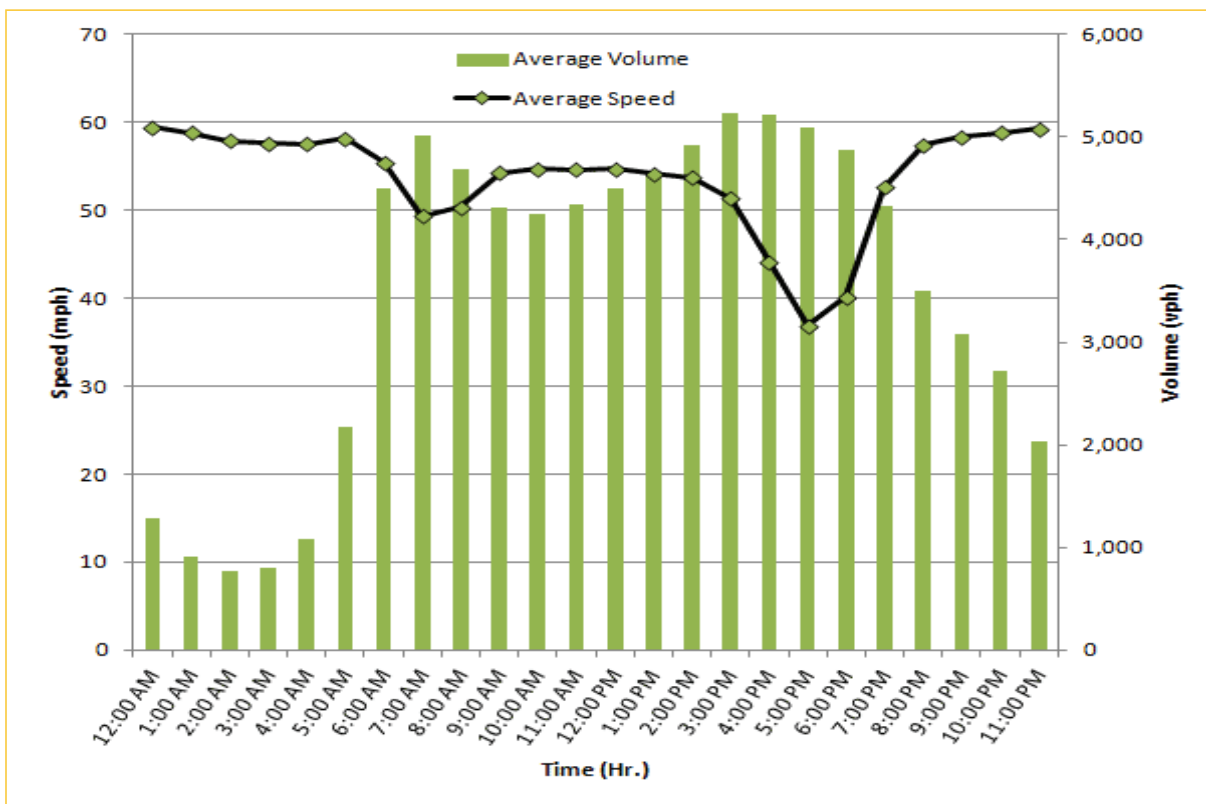



* Twelve-month average from March 1st, 2014 to February 28th, 2015.

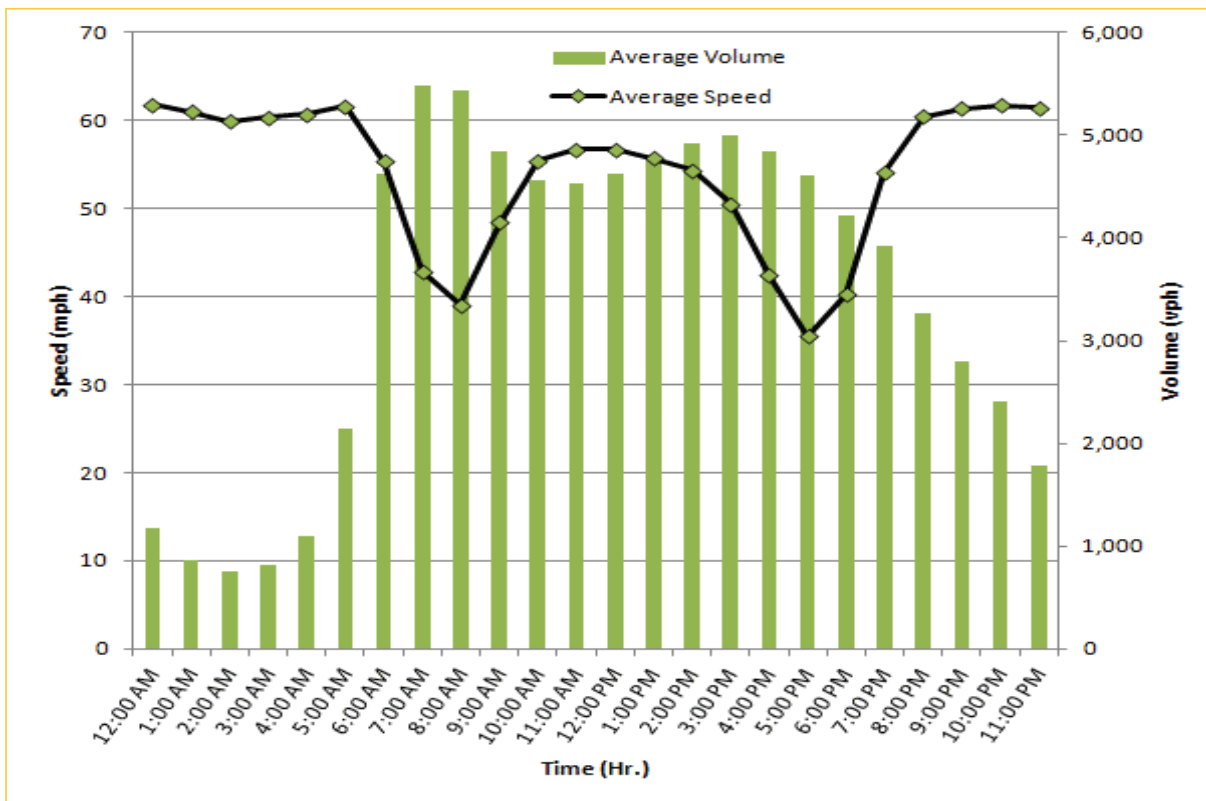
TRAVEL TIME RELIABILITY REPORT

Weekdays Speeds and Volumes by Time of Day*

SR 826 Northbound/Eastbound : 15.6 Miles
From: South of NW 25 Street
To: East of NW 12 Avenue



SR 826 Southbound/Westbound: 15.6 Miles
From: East of NW 12 Avenue
To: South of NW 25 Street



* Twelve-month average from March 1st, 2014 to February 28th, 2015.