

## TRAVEL TIME RELIABILITY REPORT

### Travel Time Index by Roadway\*

Time	I-95		I-195		I-75		SR 826					
	NB	SB	EB	WB	NB	SB	NB	EB	NB/EB	SB	WB	SB/WB
0:00	1.10	1.24	1.10	1.02	0.99	0.99	0.99	1.01	0.99	1.00	0.98	0.98
1:00	1.08	1.19	1.10	1.02	1.01	1.00	1.00	1.02	1.00	1.01	0.99	1.00
2:00	1.09	1.19	1.11	1.03	1.03	1.02	1.02	1.03	1.02	1.03	1.01	1.02
3:00	1.08	1.20	1.11	1.03	1.10	1.02	1.03	1.03	1.02	1.02	1.01	1.01
4:00	1.07	1.17	1.10	1.03	1.15	1.01	1.04	1.03	1.03	1.01	1.01	1.01
5:00	1.05	1.13	1.09	1.01	1.11	0.99	1.03	1.02	1.02	1.00	0.99	0.99
6:00	1.05	1.24	1.10	1.00	1.05	1.00	1.06	1.10	1.07	1.18	1.06	1.12
7:00	1.06	1.69	1.17	1.00	1.04	1.17	1.09	1.40	1.21	1.62	1.29	1.46
8:00	1.11	1.98	1.42	1.06	1.05	1.36	1.10	1.35	1.19	1.83	1.38	1.62
9:00	1.07	1.64	1.31	1.04	1.04	1.10	1.10	1.13	1.10	1.47	1.15	1.32
10:00	1.08	1.31	1.15	1.05	1.03	1.01	1.11	1.07	1.08	1.19	1.06	1.12
11:00	1.09	1.24	1.13	1.06	1.03	1.01	1.12	1.07	1.08	1.14	1.04	1.09
12:00	1.10	1.23	1.13	1.06	1.02	1.02	1.11	1.07	1.08	1.13	1.04	1.08
13:00	1.12	1.23	1.15	1.07	1.02	1.02	1.12	1.09	1.10	1.15	1.07	1.11
14:00	1.18	1.23	1.19	1.08	1.02	1.02	1.14	1.09	1.11	1.20	1.07	1.13
15:00	1.37	1.25	1.23	1.14	1.01	1.03	1.25	1.08	1.16	1.38	1.08	1.23
16:00	1.62	1.29	1.14	1.38	1.01	1.02	1.64	1.08	1.36	1.77	1.16	1.48
17:00	1.78	1.39	1.11	1.47	1.05	1.01	2.12	1.11	1.63	2.27	1.24	1.78
18:00	1.59	1.35	1.16	1.20	1.18	1.01	1.90	1.09	1.51	2.02	1.10	1.58
19:00	1.22	1.22	1.14	1.06	1.04	1.00	1.24	1.04	1.14	1.29	1.03	1.16
20:00	1.10	1.16	1.12	1.04	0.98	0.99	1.05	1.03	1.03	1.03	1.00	1.01
21:00	1.09	1.19	1.11	1.04	0.98	0.99	1.03	1.02	1.02	1.01	1.00	1.00
22:00	1.12	1.41	1.12	1.03	0.98	0.99	1.01	1.01	1.01	1.01	0.99	0.99
23:00	1.13	1.42	1.11	1.02	0.99	0.98	1.00	1.01	0.99	1.00	0.98	0.99
<b>FFS**</b>	<b>59 mph</b>	<b>59 mph</b>	<b>58 mph</b>	<b>62 mph</b>	<b>66 mph</b>	<b>66 mph</b>	<b>61 mph</b>	<b>57 mph</b>	<b>59 mph</b>	<b>63 mph</b>	<b>59 mph</b>	<b>61 mph</b>

*Maximum Travel Time Index. \*\* FFS: Free Flow Speed*

**Travel Time Index (TTI)** is a measure of average conditions that indicates how much longer, **on average**, travel times are during congestion compared to during light traffic.

**Real World Example:** A TTI of 1.60 means that for a trip that usually takes 10 minutes in light traffic, a traveler should budget for an additional 6 minutes **on average**.

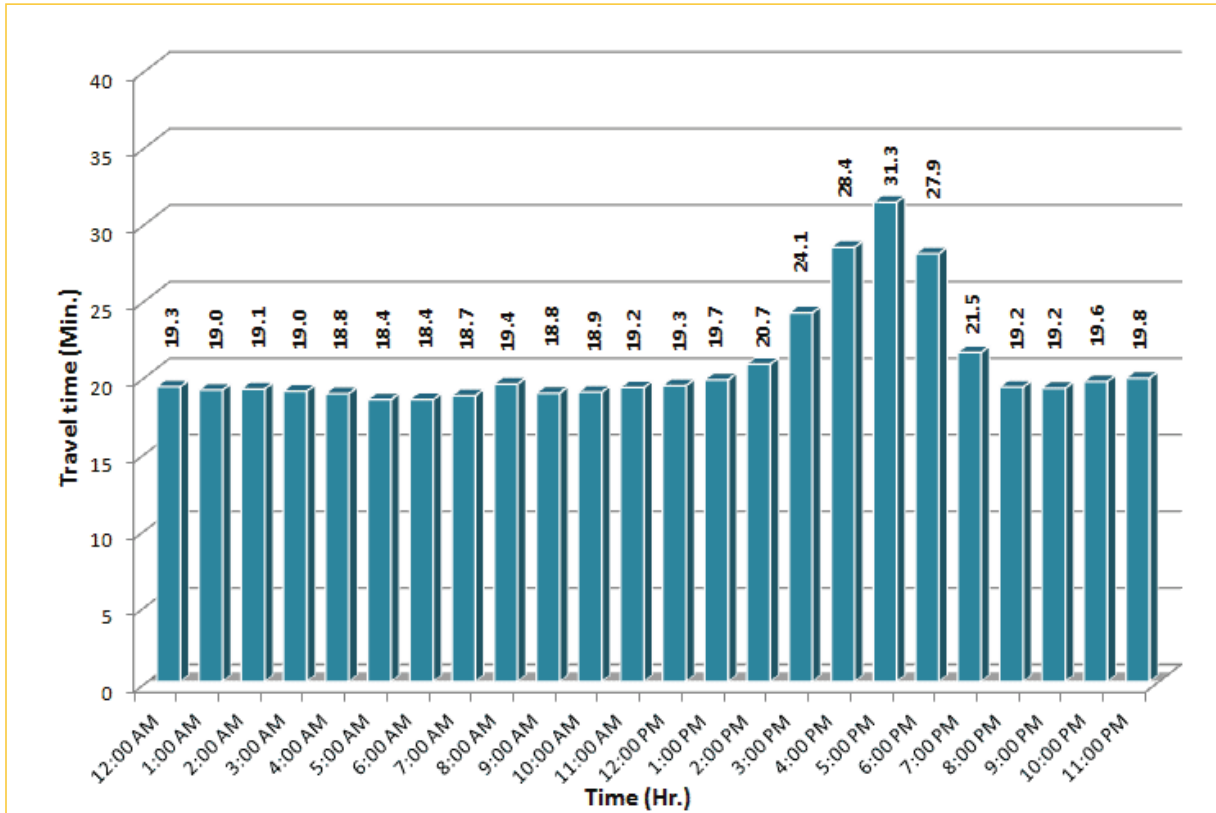


\* Twelve-month average from February 1<sup>st</sup>, 2014 to January 31<sup>st</sup>, 2015.

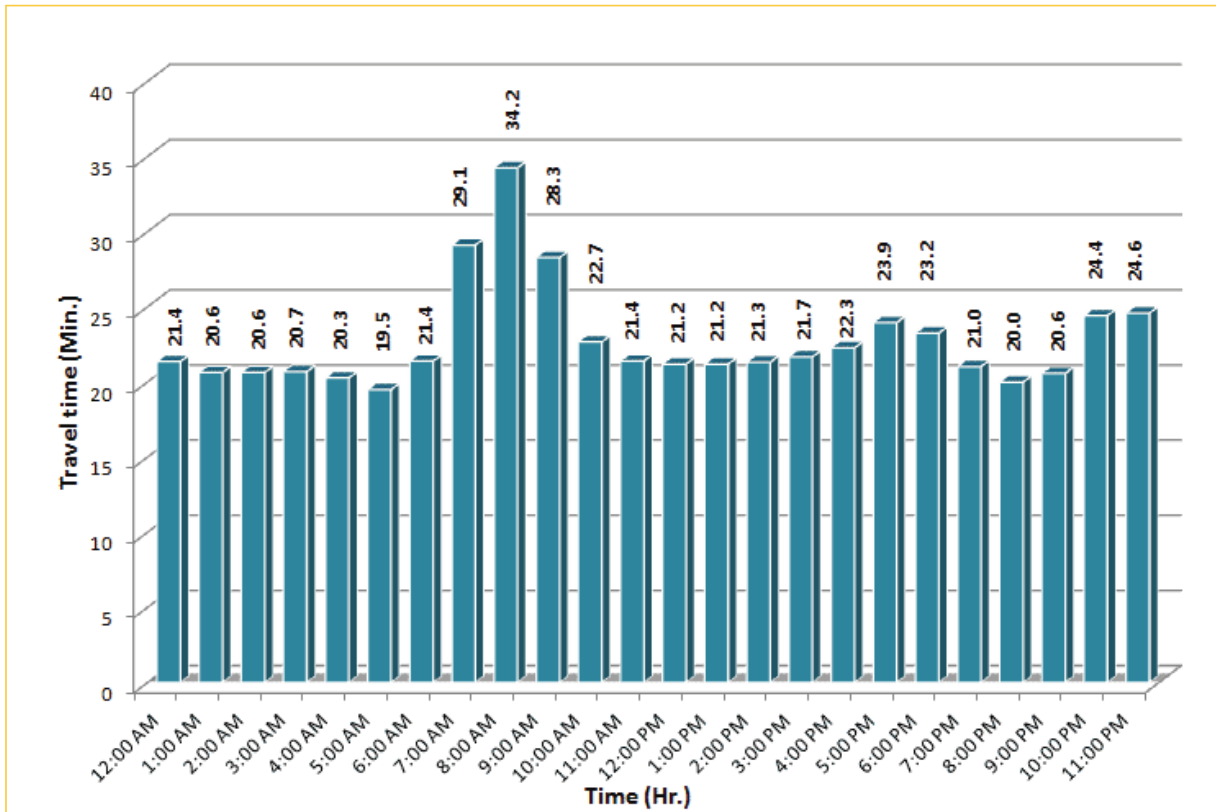
# TRAVEL TIME RELIABILITY REPORT

## Weekdays Travel Times by Time of Day\*

**I-95 Northbound: 17.3 Miles**  
From: US-1  
To: Miami-Dade / Broward County Line

**I-95 Southbound: 17.3 Miles**  
From: Miami-Dade / Broward County Line  
To: US-1

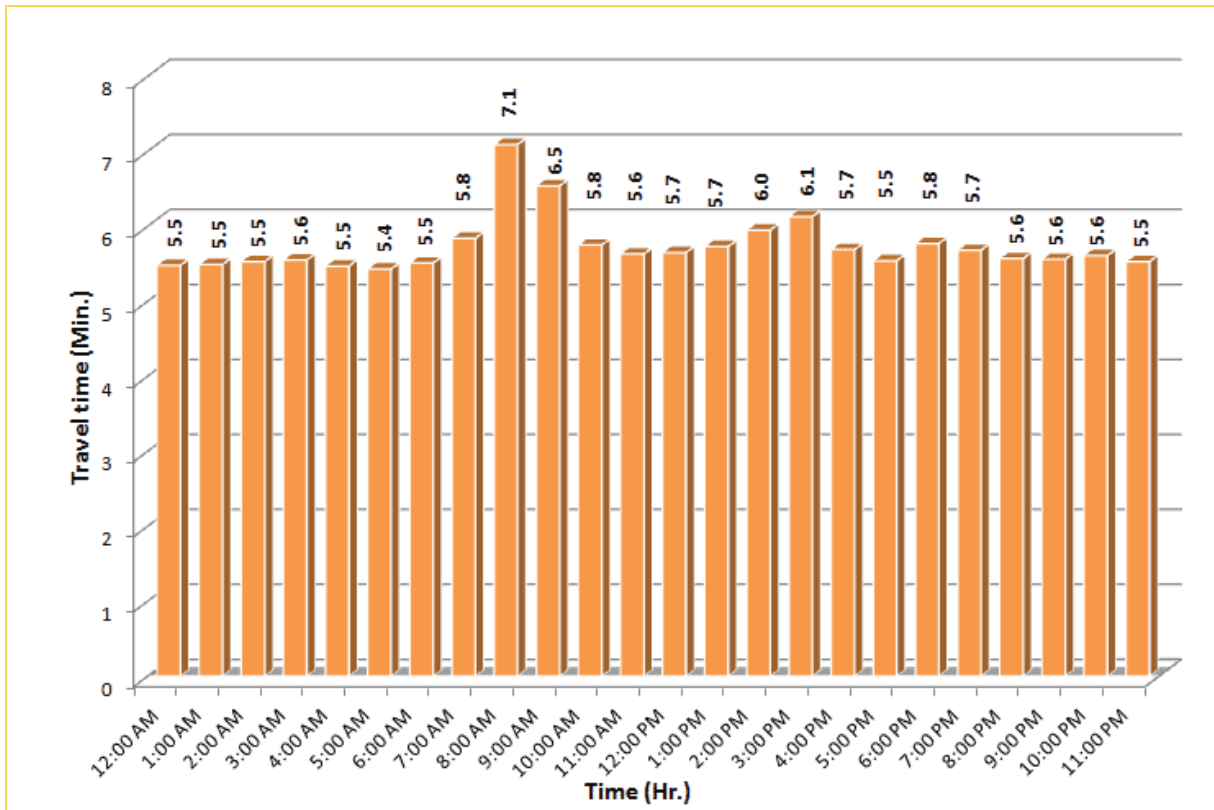



\* Twelve-month average from February 1<sup>st</sup>, 2014 to January 31<sup>st</sup>, 2015. Excludes express lanes.

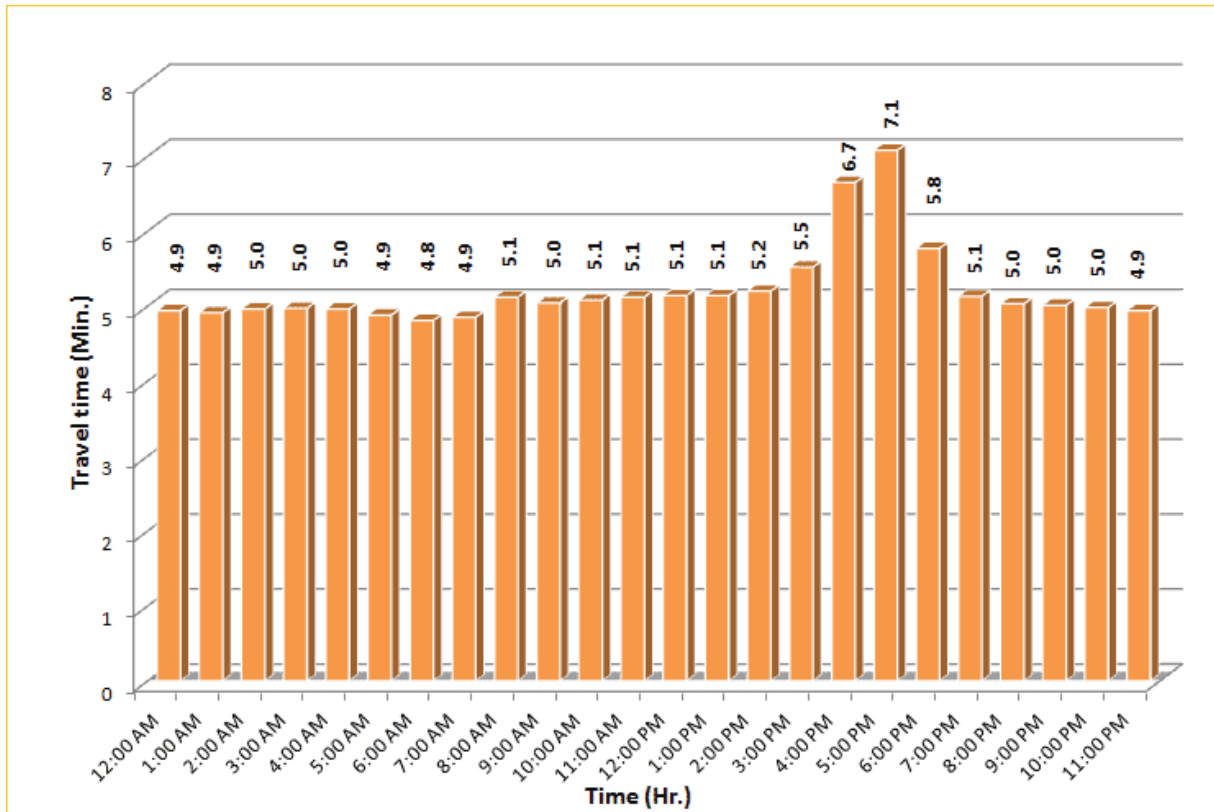
# TRAVEL TIME RELIABILITY REPORT

## Weekdays Travel Times by Time of Day\*

**I-195 Eastbound: 4.9 Miles**  
From: West of North Miami Avenue  
To: West of Alton Road



**I-195 Westbound: 4.9 Miles**  
From: West of Alton Road  
To: West of North Miami Avenue


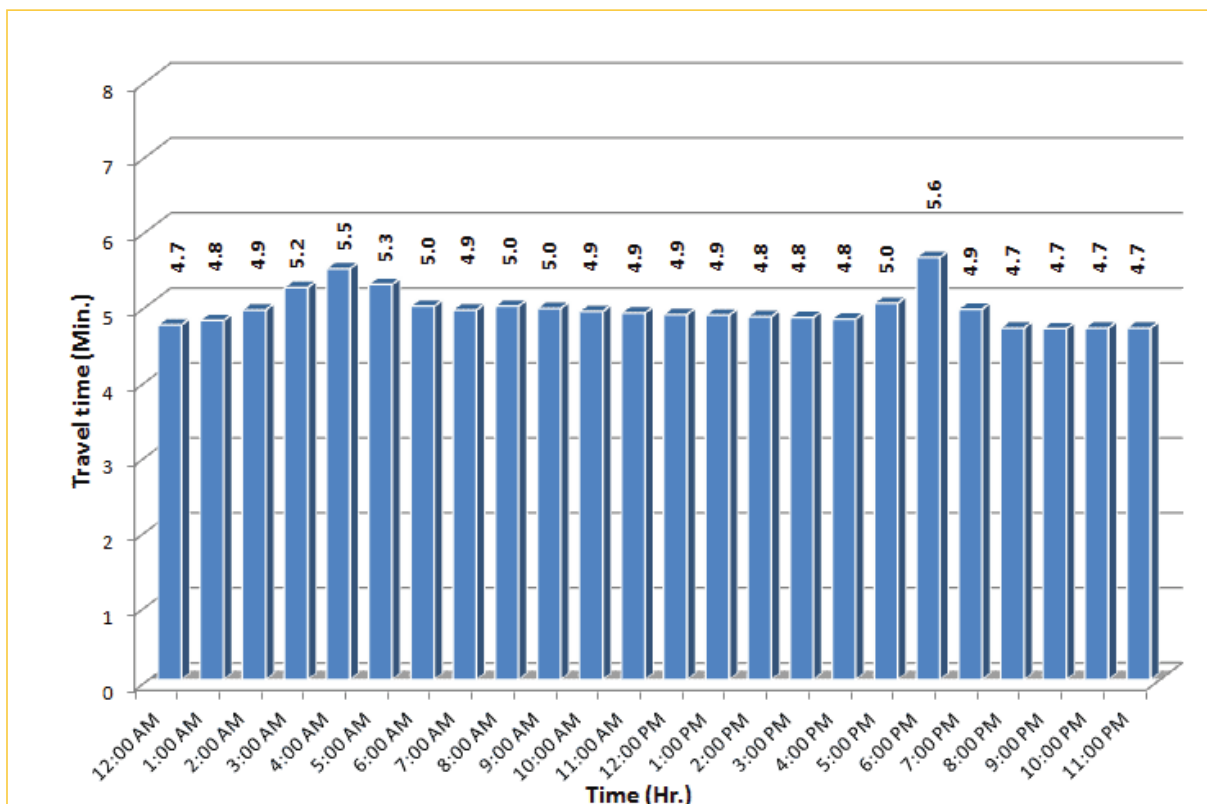


\* Twelve-month average from February 1<sup>st</sup>, 2014 to January 31<sup>st</sup>, 2015.

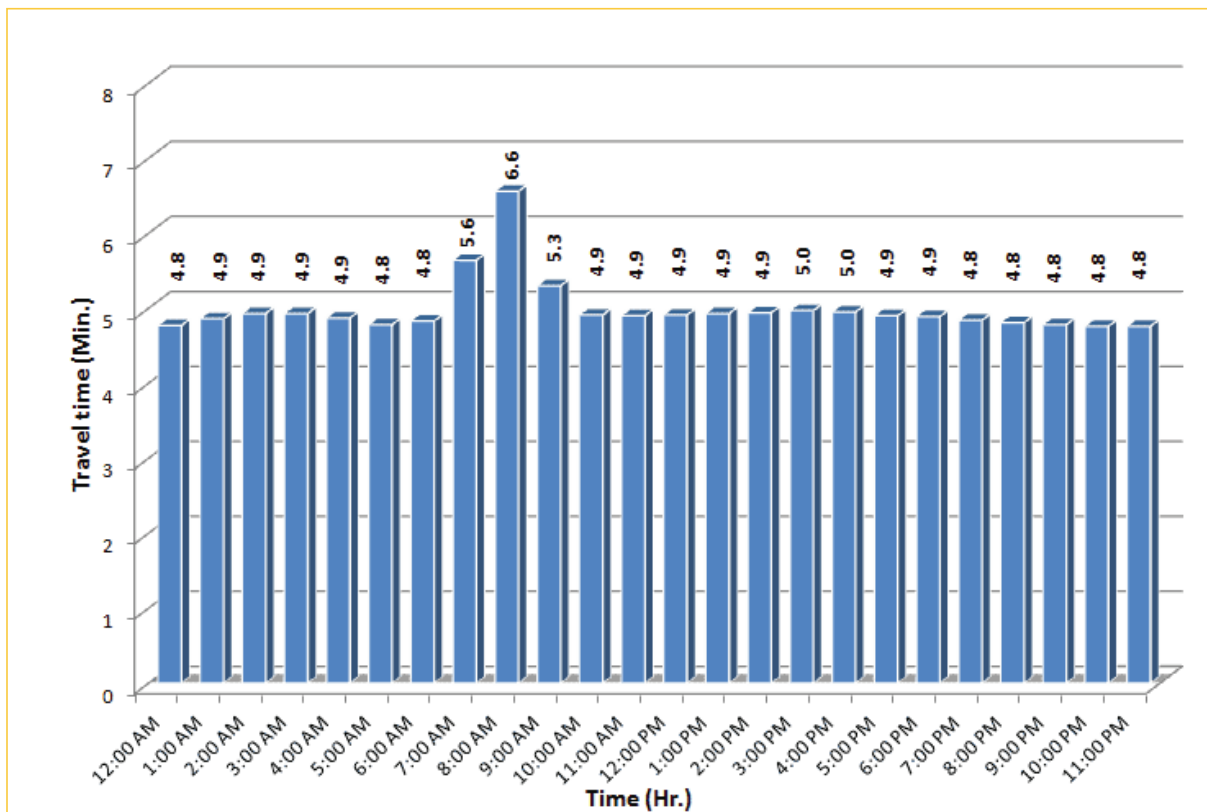
## TRAVEL TIME RELIABILITY REPORT

### Weekdays Travel Times by Time of Day\*

**I-75 Northbound: 5.4 Miles**  
From: West of SR 826  
To: North of Florida's Turnpike

**I-75 Southbound: 5.4 Miles**  
From: North of Florida's Turnpike  
To: West of SR 826


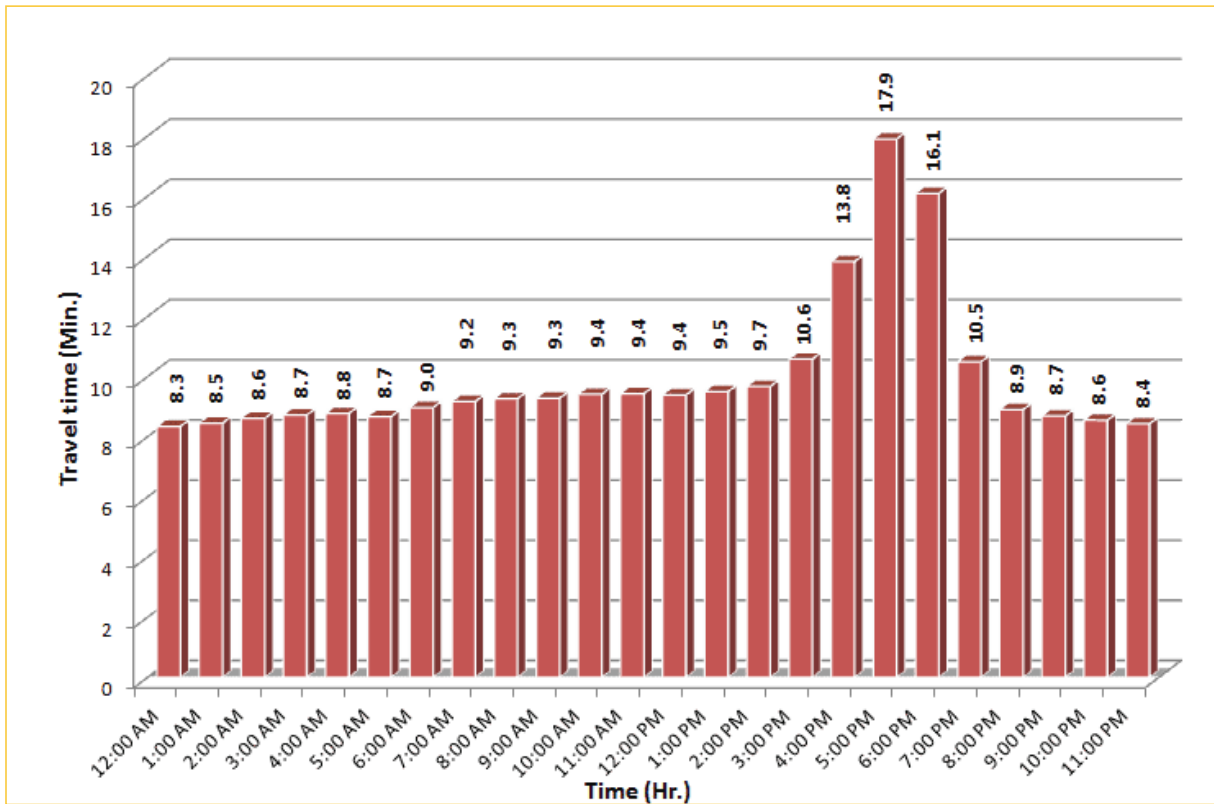



\* Twelve-month average from February 1<sup>st</sup>, 2014 to January 31<sup>st</sup>, 2015.

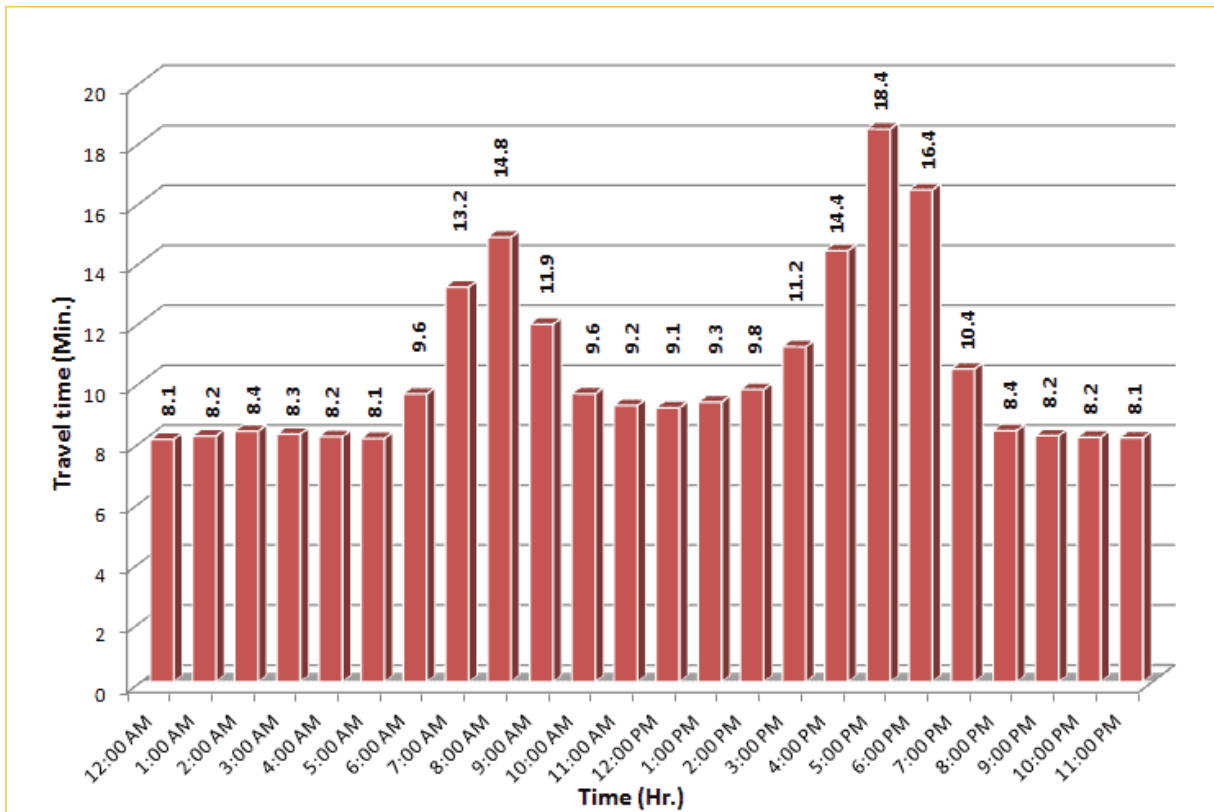
# TRAVEL TIME RELIABILITY REPORT

## Weekdays Travel Times by Time of Day\*

**SR 826 Northbound: 8.4 Miles**  
From: South of NW 25 Street  
To: North of NW 154 Street

**SR 826 Southbound: 8.4 Miles**  
From: North of NW 154 Street  
To: South of NW 25 Street

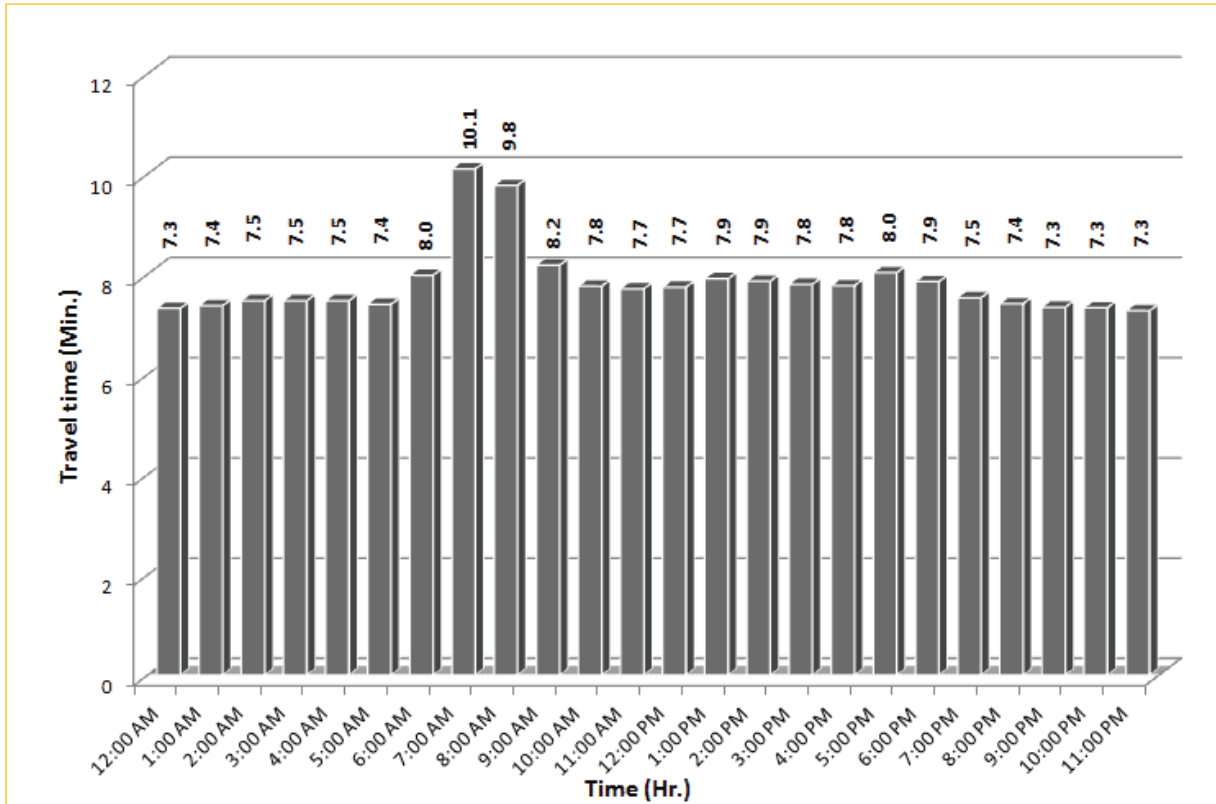



\* Twelve-month average from February 1<sup>st</sup>, 2014 to January 31<sup>st</sup>, 2015.

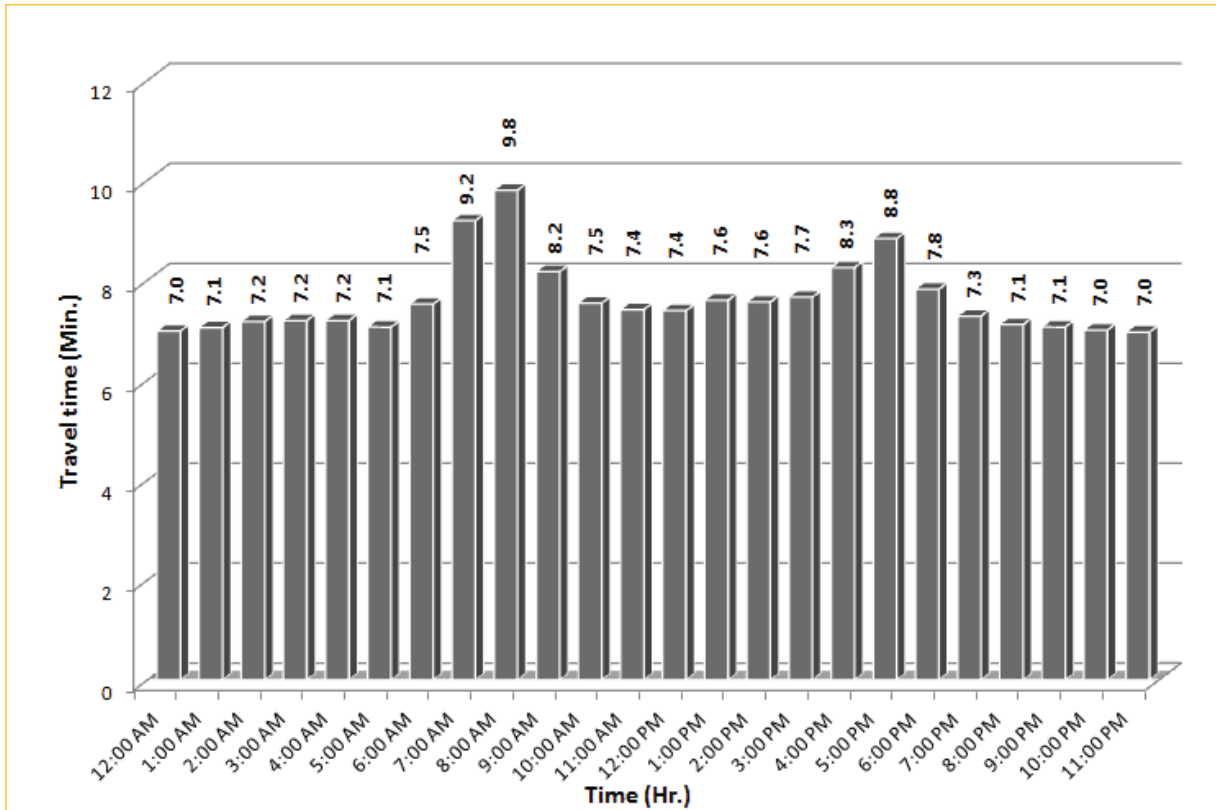
## TRAVEL TIME RELIABILITY REPORT

### Weekdays Travel Times by Time of Day\*

**SR 826 Eastbound: 7.1 Miles**  
From: West of NW 67 Avenue  
To: East of NW 12 Avenue



**SR 826 Westbound: 7.1 Miles**  
From: East of NW 12 Avenue  
To: West of NW 67 Avenue

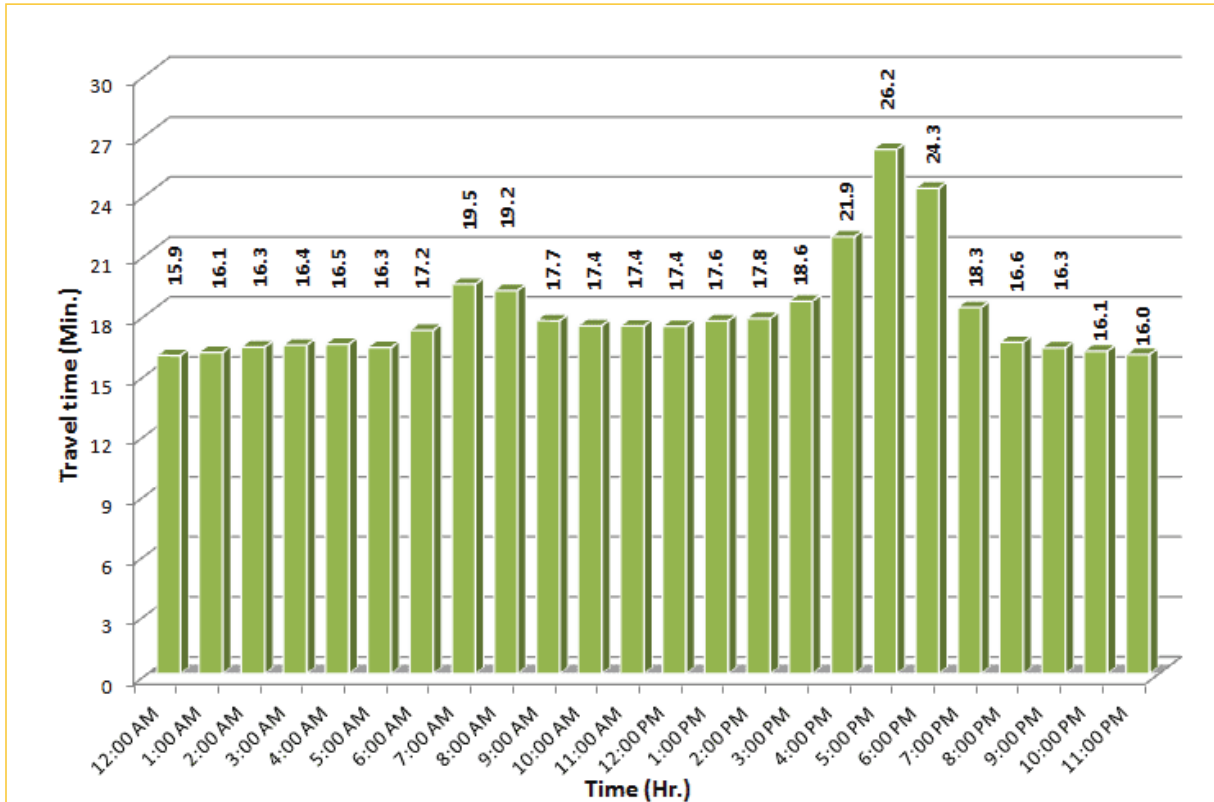


\* Twelve-month average from February 1<sup>st</sup>, 2014 to January 31<sup>st</sup>, 2015.

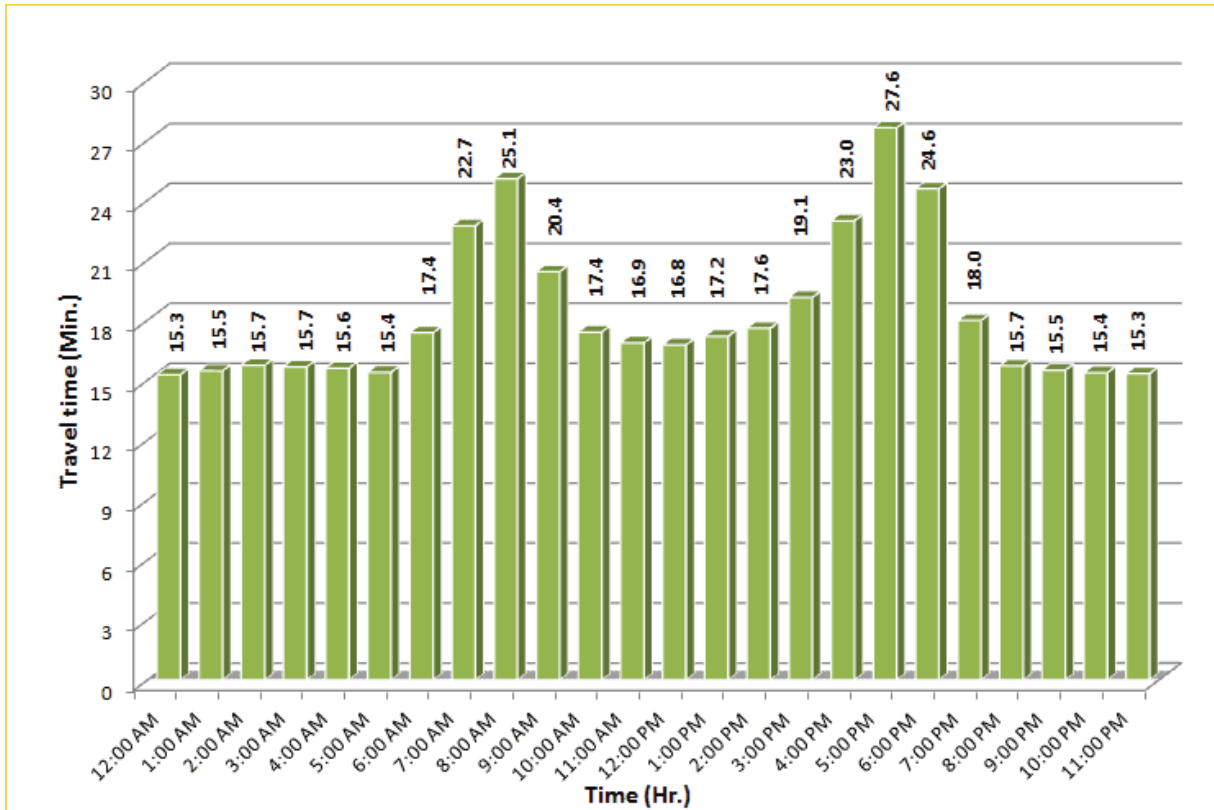
## TRAVEL TIME RELIABILITY REPORT

### Weekdays Travel Times by Time of Day\*

**SR 826 Northbound/Eastbound : 15.6 Miles**  
From: South of NW 25 Street  
To: East of NW 12 Avenue

**SR 826 Southbound/Westbound: 15.6 Miles**  
From: East of NW 12 Avenue  
To: South of NW 25 Street

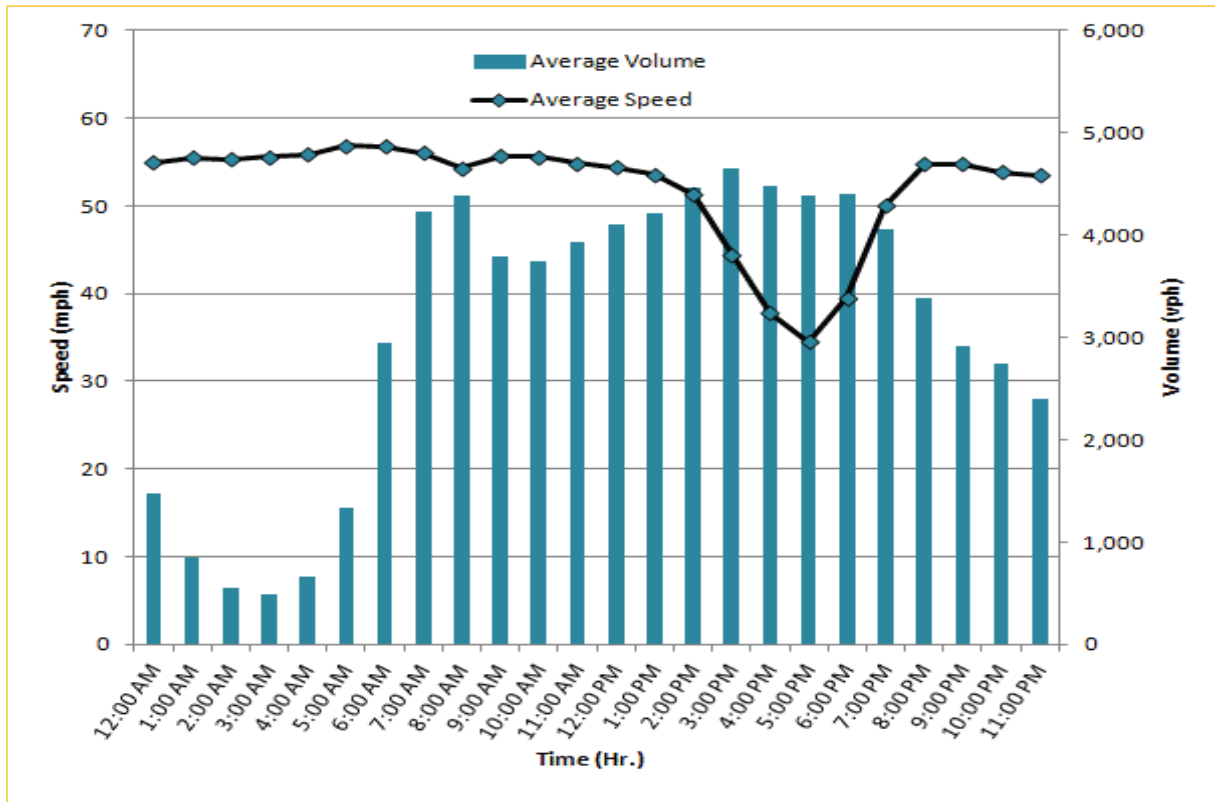



\* Twelve-month average from February 1<sup>st</sup>, 2014 to January 31<sup>st</sup>, 2015.

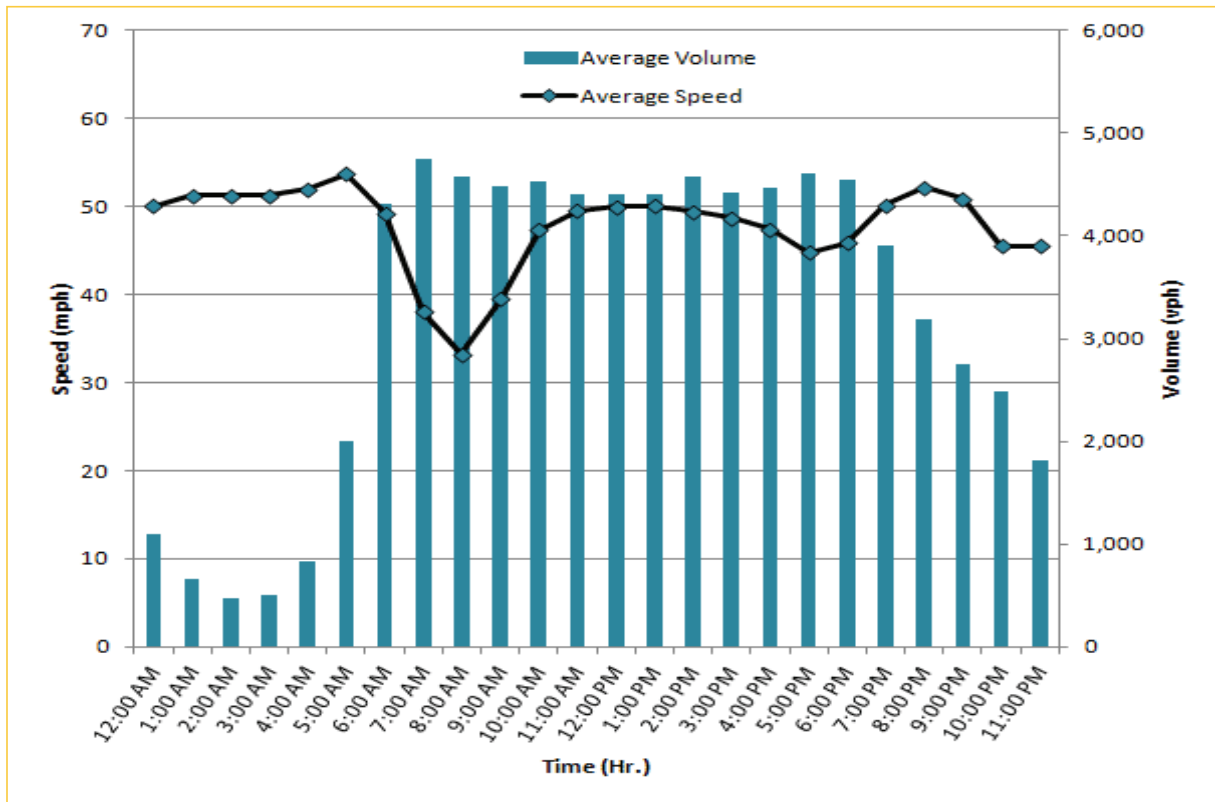
# TRAVEL TIME RELIABILITY REPORT

## Weekdays Speeds and Volumes by Time of Day\*

**I-95 Northbound: 17.3 Miles**  
From: US-1  
To: Miami-Dade / Broward County Line

**I-95 Southbound: 17.3 Miles**  
From: Miami-Dade / Broward County Line  
To: US-1


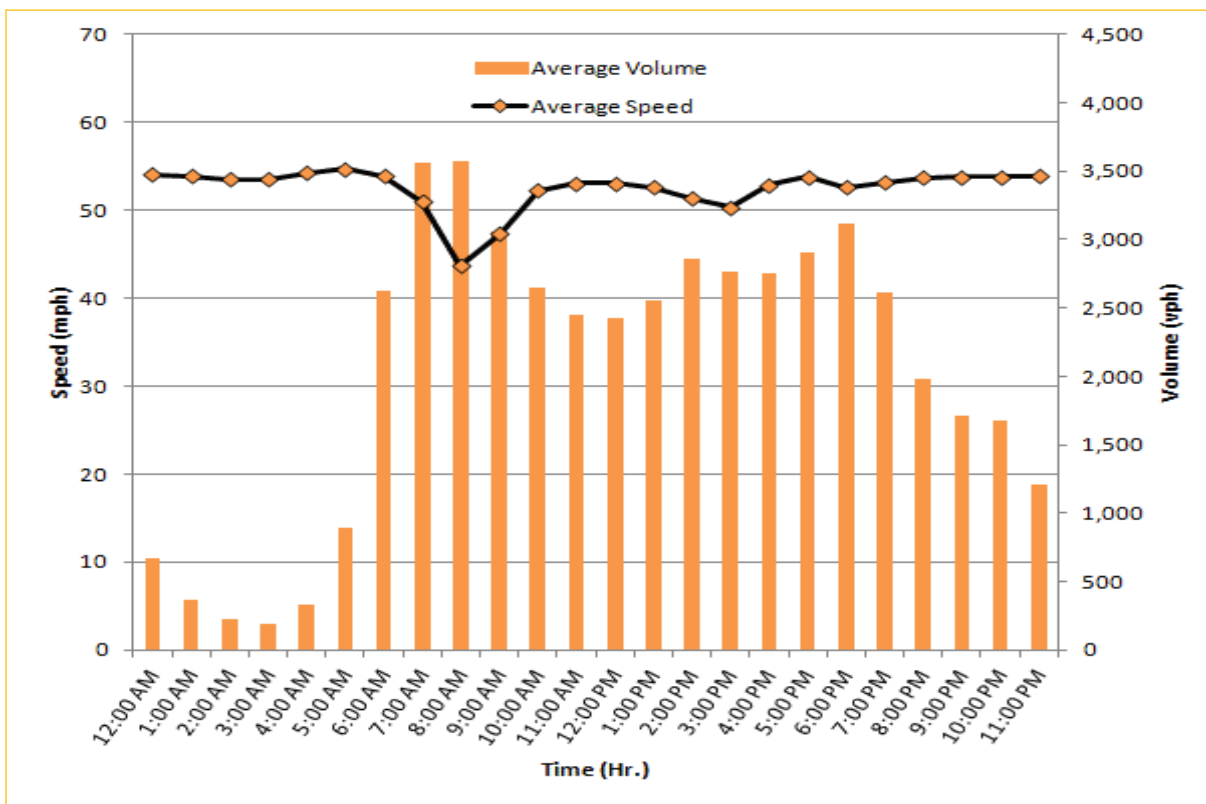
\* Twelve-month average from February 1<sup>st</sup>, 2014 to January 31<sup>st</sup>, 2015. Excludes express lanes.



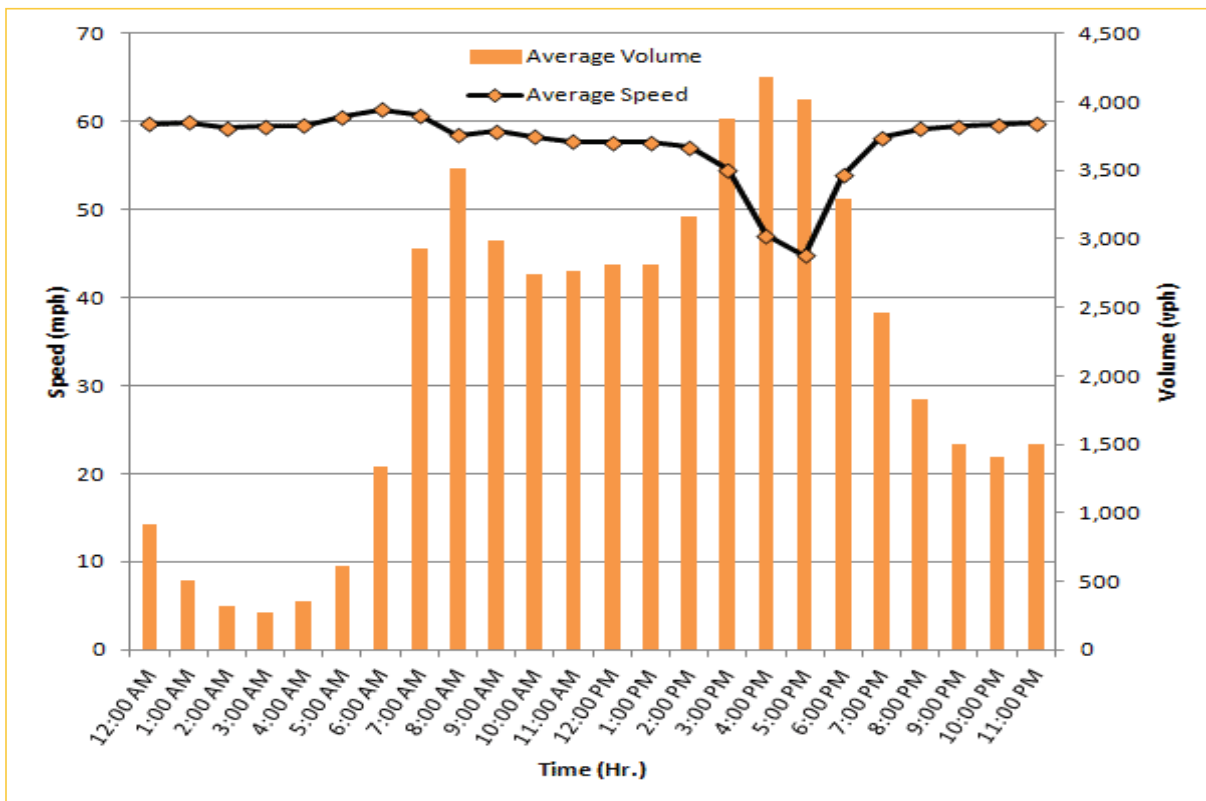
# TRAVEL TIME RELIABILITY REPORT

## Weekdays Speeds and Volumes by Time of Day\*

**I-195 Eastbound: 4.9 Miles**  
From: West of North Miami Avenue  
To: West of Alton Road

**I-195 Westbound: 4.9 Miles**  
From: West of Alton Road  
To: West of North Miami Avenue

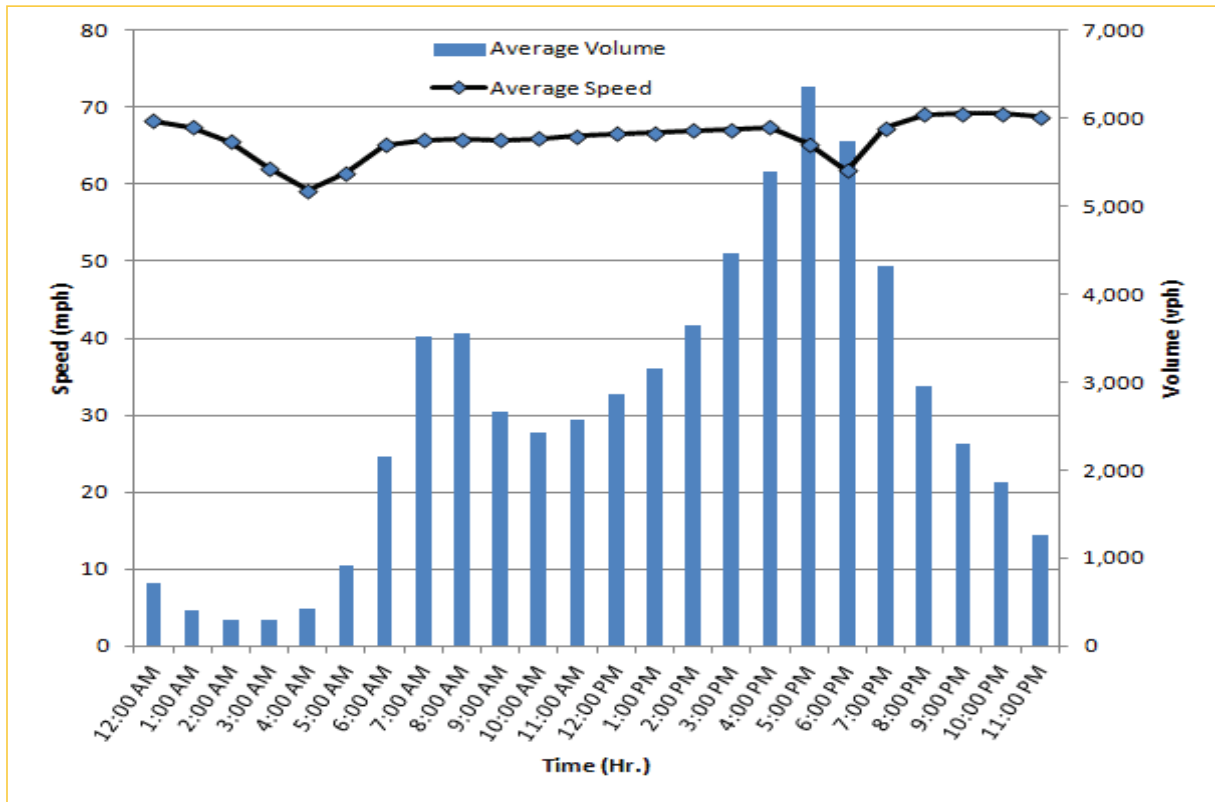



\* Twelve-month average from February 1<sup>st</sup>, 2014 to January 31<sup>st</sup>, 2015.

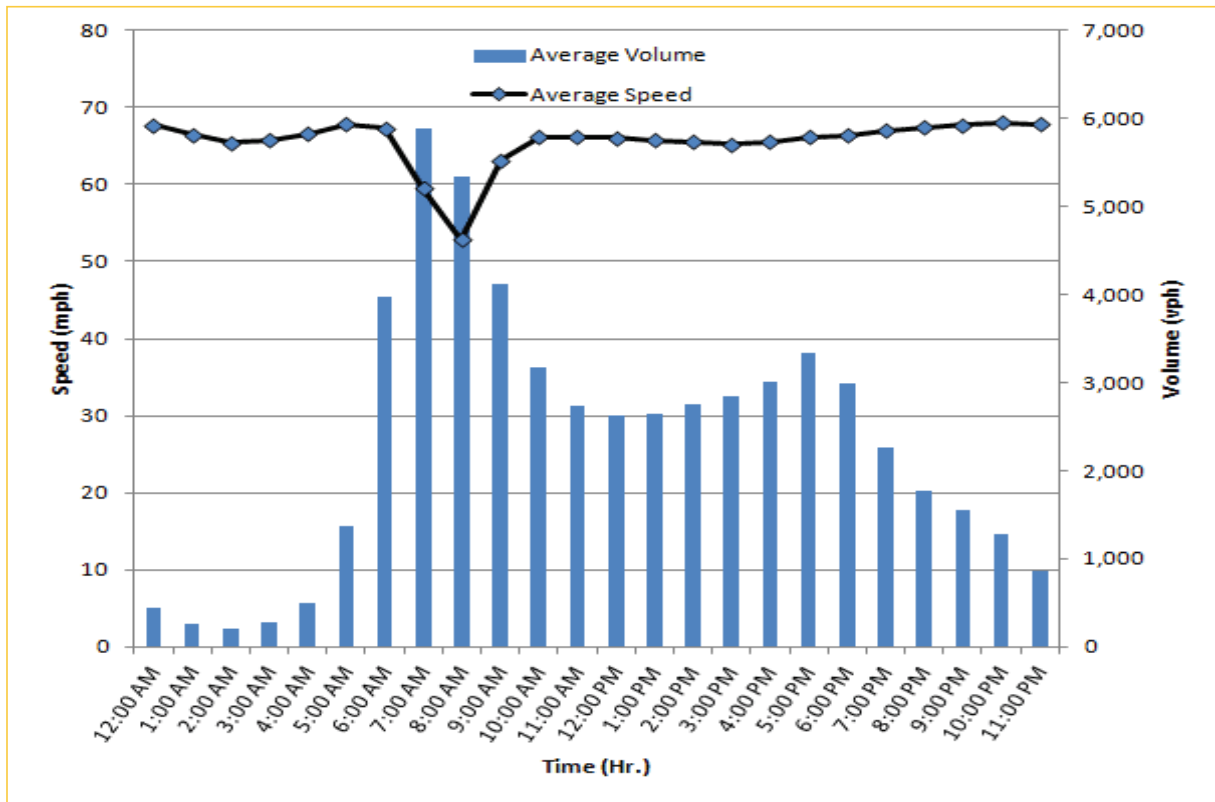
# TRAVEL TIME RELIABILITY REPORT

## Weekdays Speeds and Volumes by Time of Day\*

**I-75 Northbound: 5.4 Miles**  
From: West of SR 826  
To: North of Florida's Turnpike



**I-75 Southbound: 5.4 Miles**  
From: North of Florida's Turnpike  
To: West of SR 826


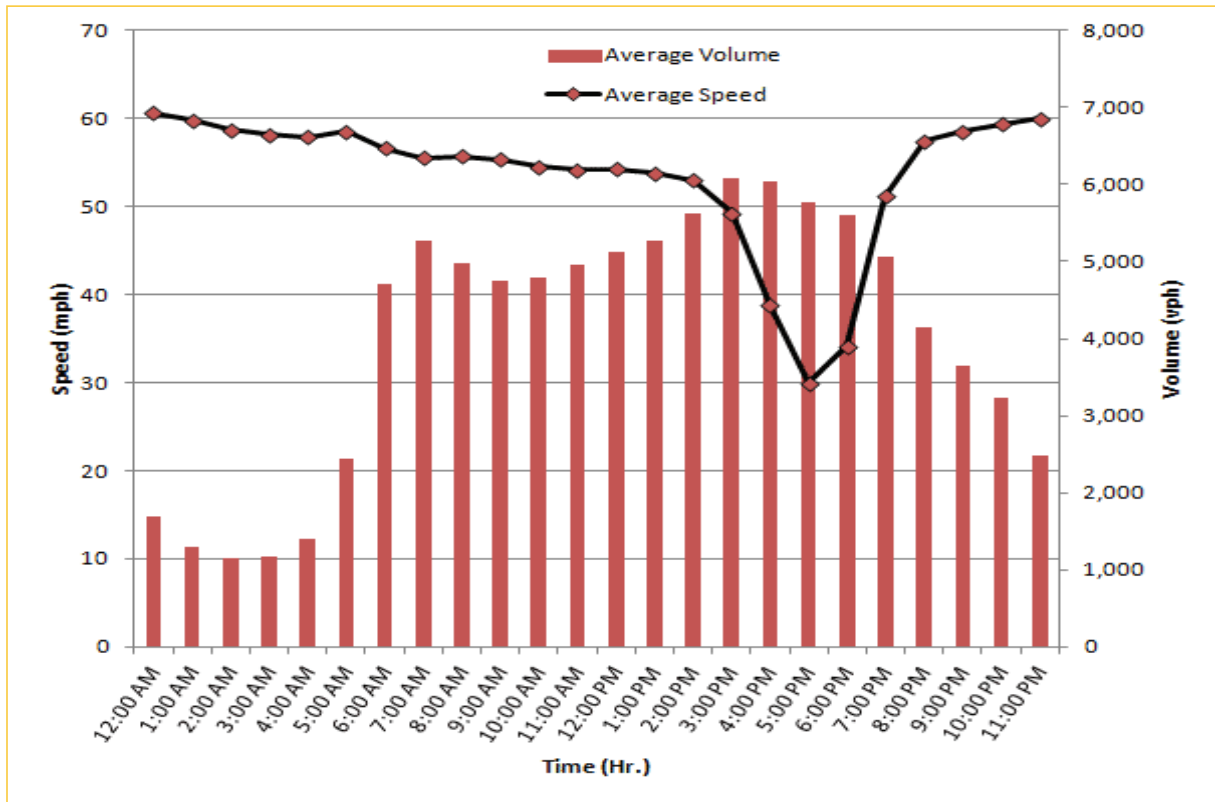


\* Twelve-month average from February 1<sup>st</sup>, 2014 to January 31<sup>st</sup>, 2015.

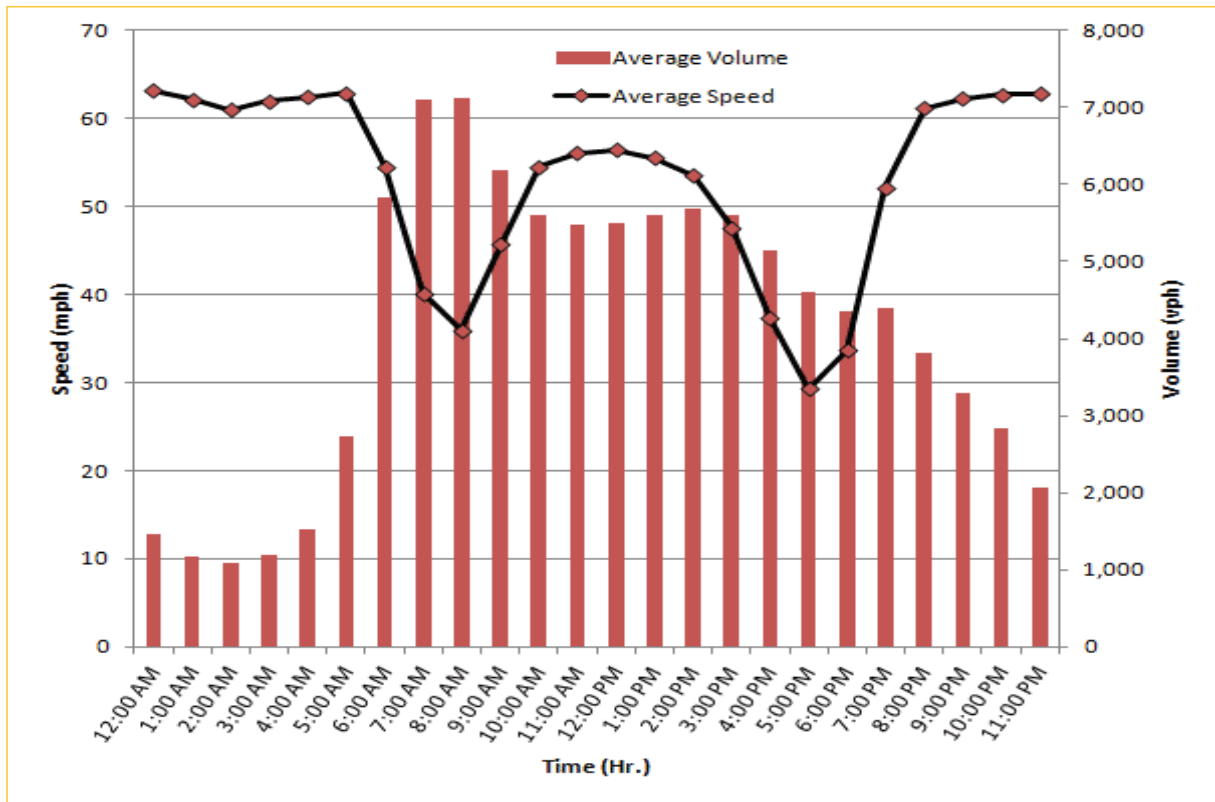
# TRAVEL TIME RELIABILITY REPORT

## Weekdays Speeds and Volumes by Time of Day\*

**SR 826 Northbound: 8.4 Miles**  
From: South of NW 25 Street  
To: North of NW 154 Street

**SR 826 Southbound: 8.4 Miles**  
From: North of NW 154 Street  
To: South of NW 25 Street

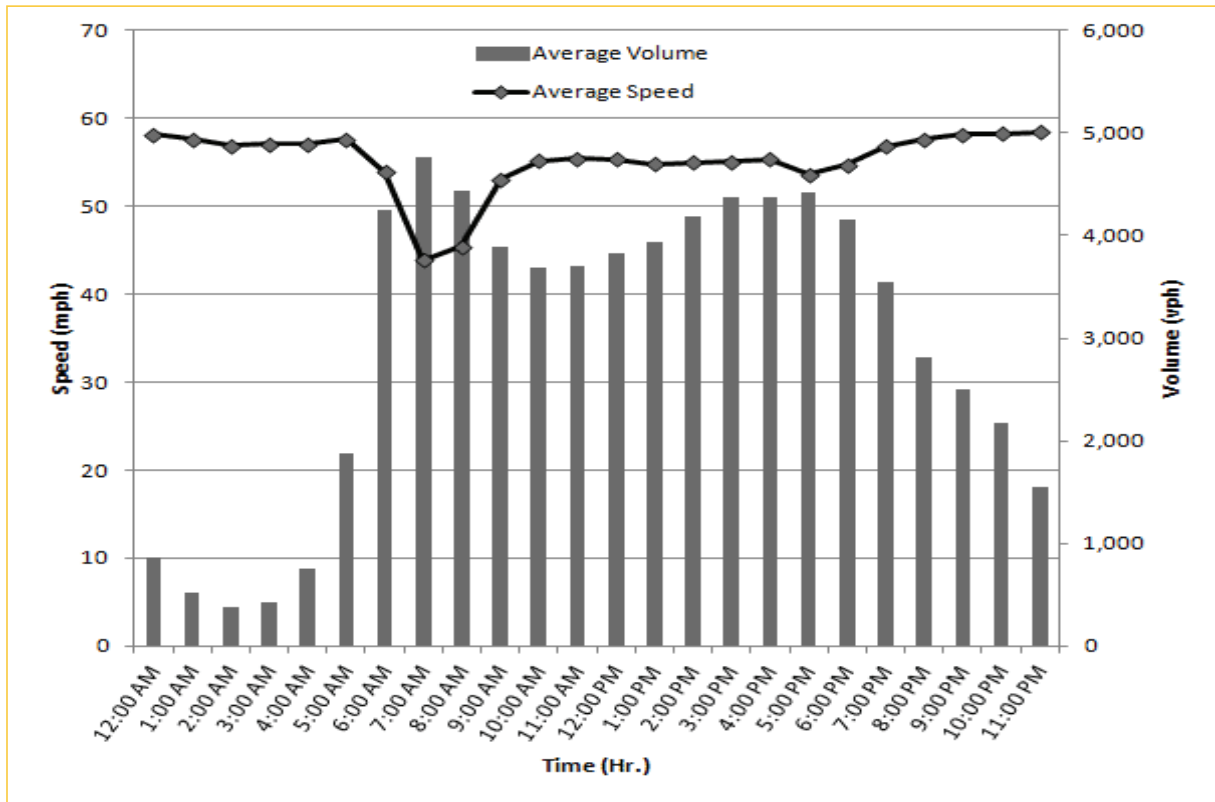



\* Twelve-month average from February 1<sup>st</sup>, 2014 to January 31<sup>st</sup>, 2015.

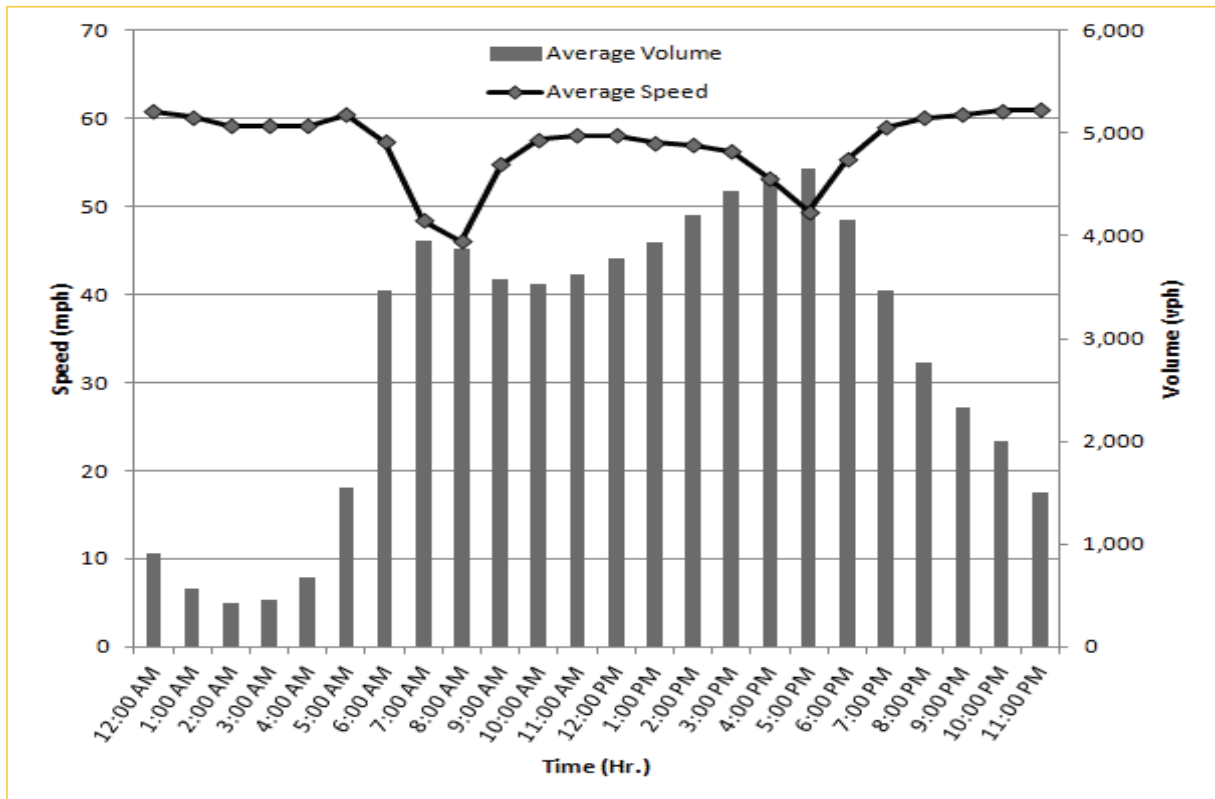
# TRAVEL TIME RELIABILITY REPORT

## Weekdays Speeds and Volumes by Time of Day\*

SR 826 Eastbound: 7.1 Miles  
From: West of NW 67 Avenue  
To: East of NW 12 Avenue

SR 826 Westbound: 7.1 Miles  
From: East of NW 12 Avenue  
To: West of NW 67 Avenue

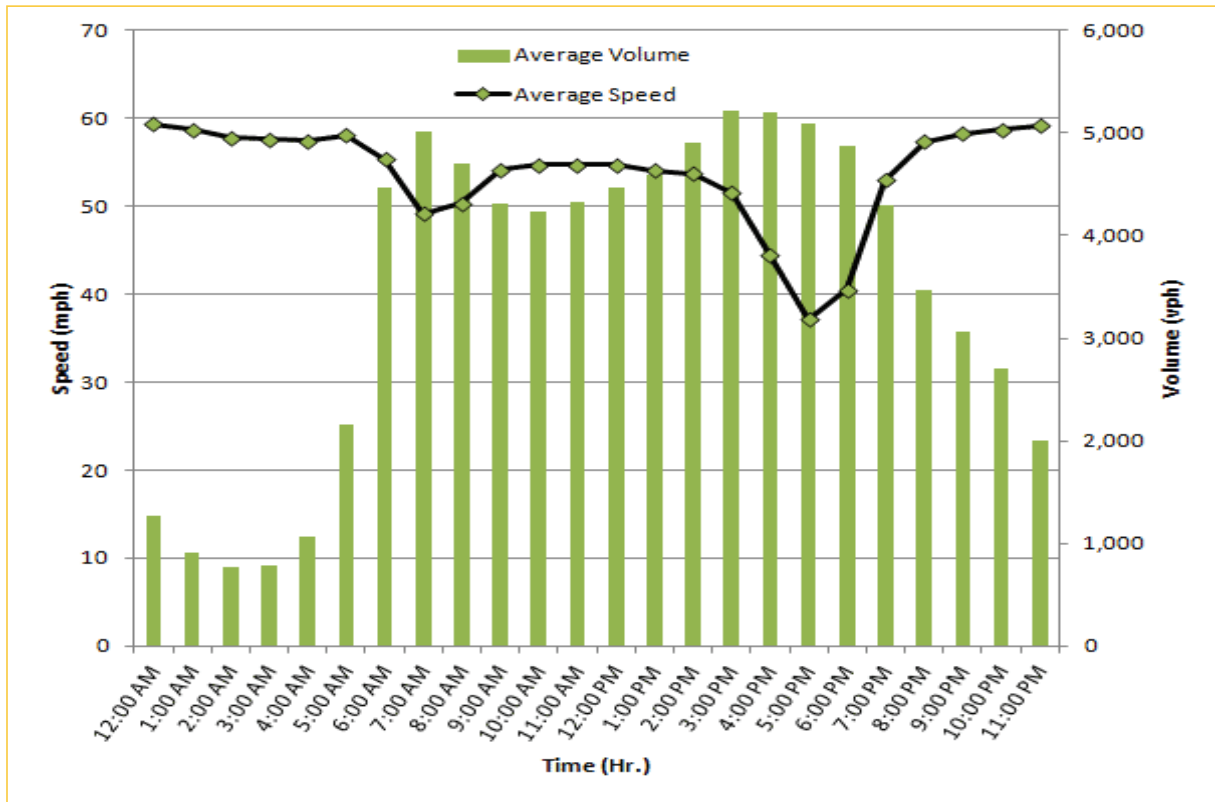



\* Twelve-month average from February 1<sup>st</sup>, 2014 to January 31<sup>st</sup>, 2015.

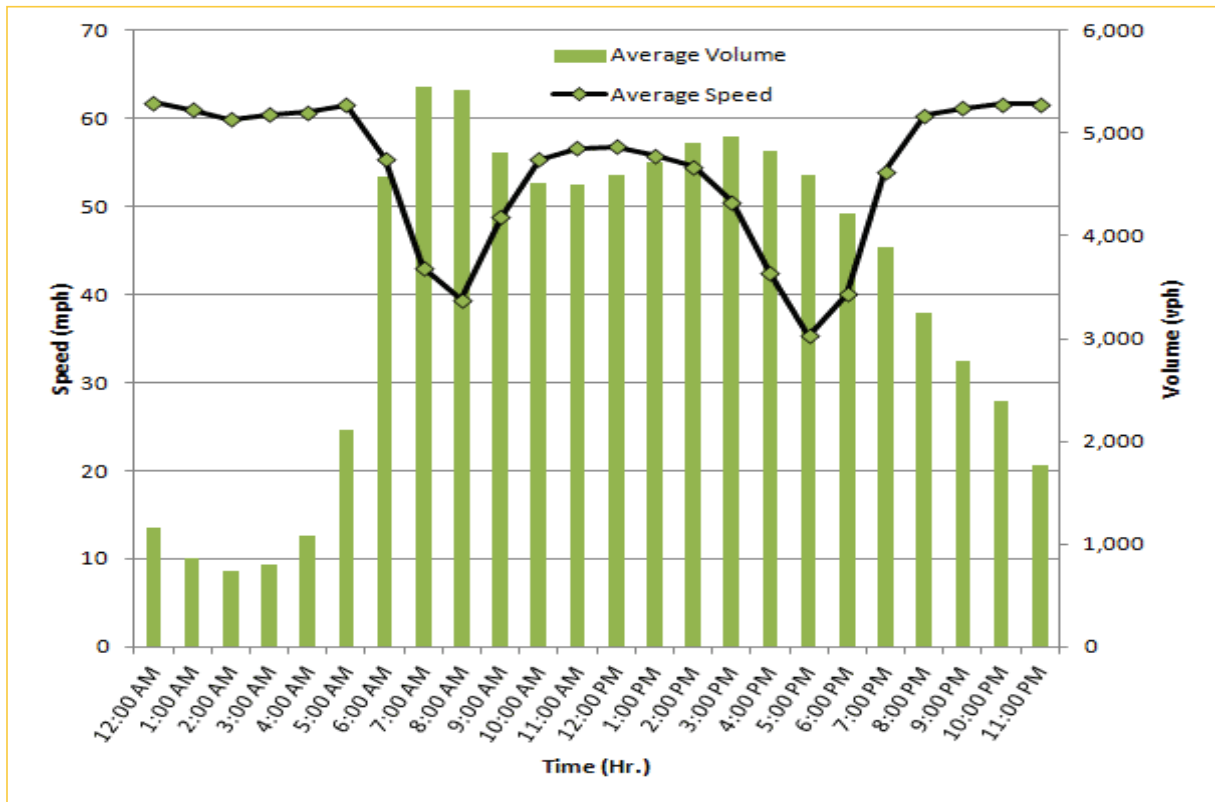
# TRAVEL TIME RELIABILITY REPORT

## Weekdays Speeds and Volumes by Time of Day\*

SR 826 Northbound/Eastbound : 15.6 Miles  
From: South of NW 25 Street  
To: East of NW 12 Avenue

SR 826 Southbound/Westbound: 15.6 Miles  
From: East of NW 12 Avenue  
To: South of NW 25 Street

\* Twelve-month average from February 1<sup>st</sup>, 2014 to January 31<sup>st</sup>, 2015.