

TRAVEL TIME RELIABILITY REPORT

Travel Time Index by Roadway*

Time	I-95		I-195		I-75		SR 826					
	NB	SB	EB	WB	NB	SB	NB	EB	NB/EB	SB	WB	SB/WB
0:00	1.11	1.26	1.15	1.00	0.98	0.99	0.98	1.03	1.00	0.99	0.99	0.99
1:00	1.12	1.22	1.15	1.00	0.99	1.00	1.00	1.03	1.00	1.01	1.00	1.00
2:00	1.14	1.23	1.16	1.01	1.02	1.02	1.01	1.04	1.02	1.02	1.02	1.02
3:00	1.13	1.23	1.16	1.01	1.08	1.02	1.03	1.04	1.03	1.01	1.02	1.01
4:00	1.12	1.20	1.15	1.01	1.13	1.01	1.03	1.04	1.03	1.01	1.02	1.01
5:00	1.08	1.15	1.14	0.99	1.09	0.99	1.02	1.04	1.02	1.00	1.00	0.99
6:00	1.08	1.24	1.15	0.98	1.03	1.00	1.06	1.11	1.07	1.16	1.05	1.11
7:00	1.09	1.63	1.21	0.98	1.02	1.14	1.08	1.43	1.22	1.60	1.26	1.44
8:00	1.14	1.88	1.45	1.03	1.02	1.32	1.08	1.39	1.20	1.80	1.35	1.58
9:00	1.10	1.60	1.33	1.02	1.02	1.08	1.09	1.15	1.10	1.43	1.13	1.28
10:00	1.10	1.32	1.19	1.03	1.02	1.01	1.10	1.09	1.08	1.17	1.06	1.12
11:00	1.11	1.25	1.17	1.04	1.02	1.01	1.10	1.08	1.08	1.13	1.06	1.09
12:00	1.12	1.24	1.17	1.04	1.01	1.01	1.10	1.09	1.08	1.13	1.05	1.09
13:00	1.14	1.25	1.17	1.04	1.01	1.02	1.12	1.10	1.10	1.16	1.08	1.12
14:00	1.20	1.26	1.22	1.05	1.01	1.02	1.13	1.10	1.11	1.21	1.07	1.14
15:00	1.37	1.28	1.26	1.12	1.00	1.02	1.23	1.09	1.15	1.38	1.08	1.24
16:00	1.60	1.30	1.17	1.36	1.00	1.02	1.58	1.09	1.34	1.76	1.17	1.48
17:00	1.79	1.38	1.15	1.47	1.06	1.01	2.08	1.12	1.62	2.27	1.27	1.79
18:00	1.58	1.36	1.19	1.15	1.17	1.01	1.88	1.10	1.51	2.01	1.12	1.59
19:00	1.22	1.24	1.18	1.02	1.06	1.00	1.23	1.06	1.14	1.26	1.03	1.15
20:00	1.12	1.18	1.16	1.02	0.98	0.99	1.05	1.04	1.04	1.03	1.01	1.02
21:00	1.11	1.19	1.16	1.01	0.97	0.99	1.03	1.03	1.02	1.01	1.01	1.00
22:00	1.12	1.38	1.16	1.00	0.98	0.98	1.01	1.03	1.01	1.00	1.00	1.00
23:00	1.12	1.42	1.16	1.00	0.98	0.98	1.00	1.02	1.00	1.00	0.99	0.99
FFS**	59 mph	60 mph	59 mph	61 mph	68 mph	67 mph	60 mph	59 mph	59 mph	63 mph	60 mph	61 mph

*Maximum Travel Time Index. ** FFS: Free Flow Speed*

Travel Time Index (TTI) is a measure of average conditions that indicates how much longer, **on average**, travel times are during congestion compared to during light traffic.

Real World Example: A TTI of 1.60 means that for a trip that usually takes 10 minutes in light traffic, a traveler should budget for an additional 6 minutes **on average**.

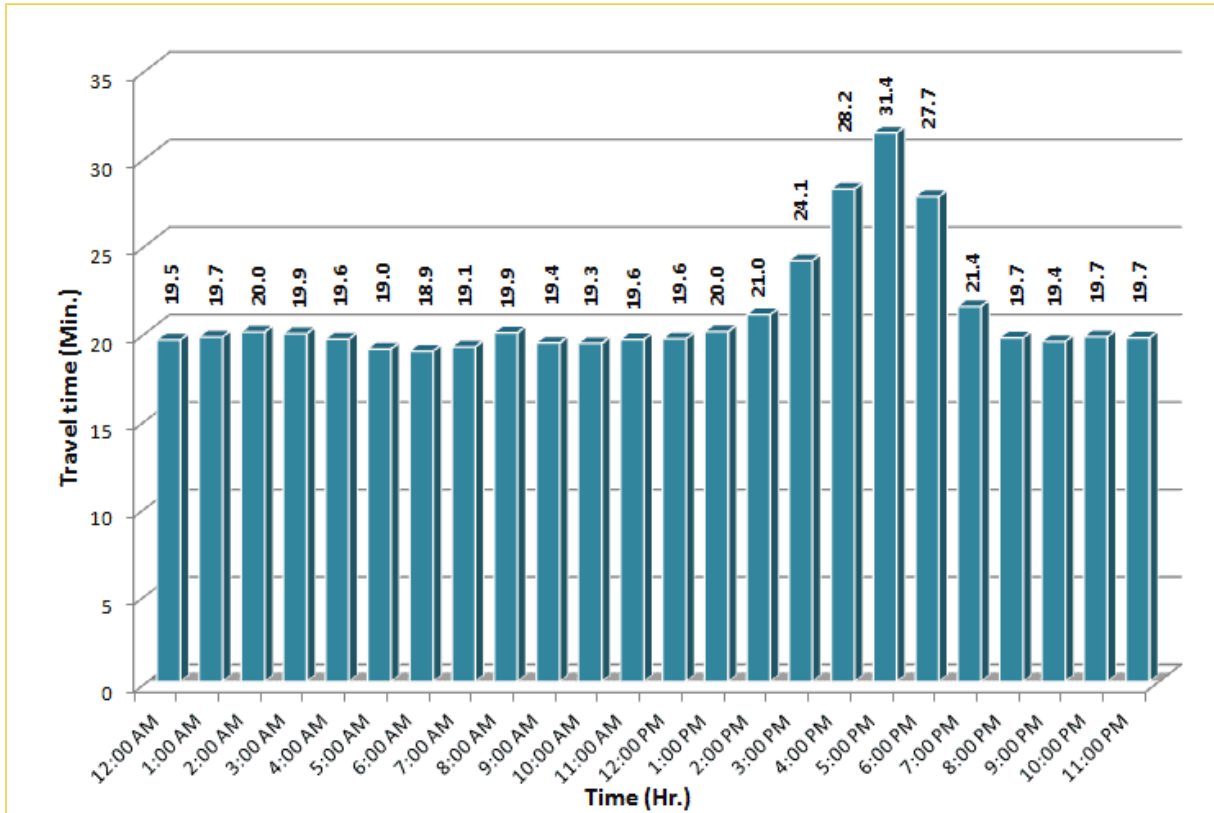


* Twelve-month average from November 1st, 2013 to October 31st, 2014.

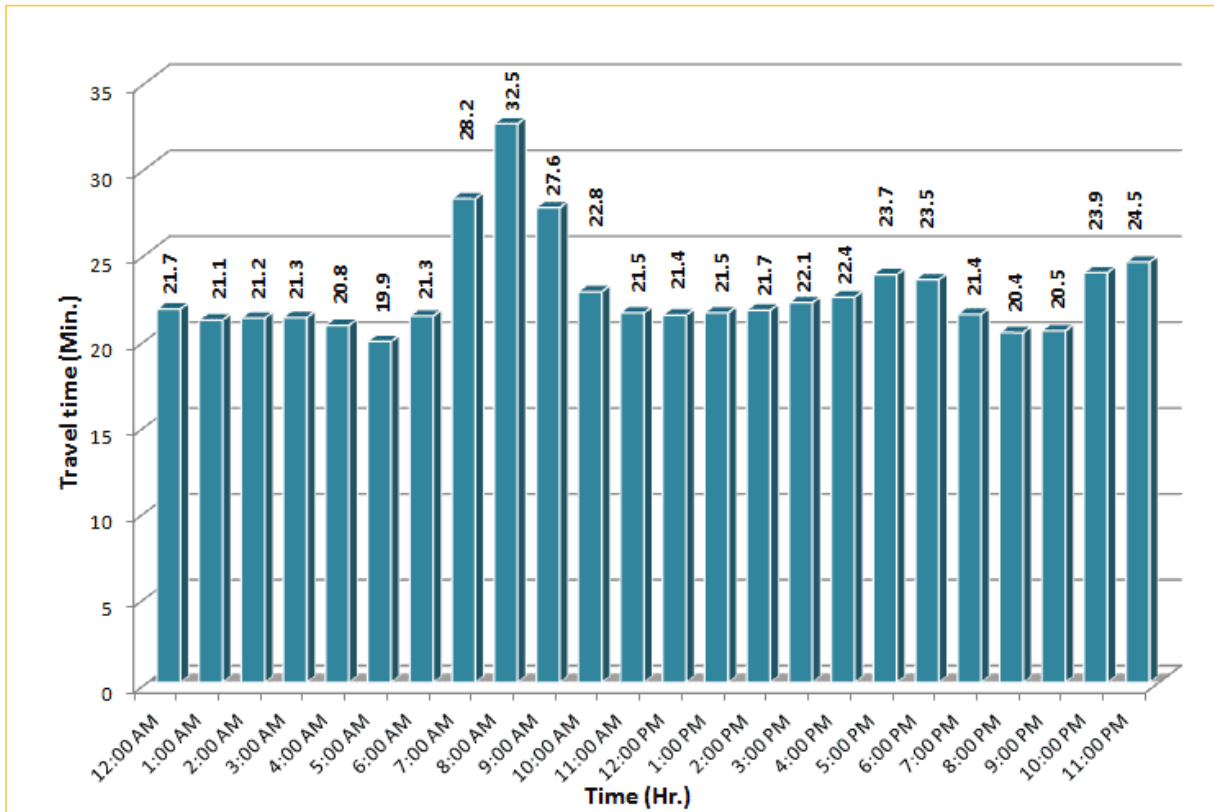
TRAVEL TIME RELIABILITY REPORT

Weekdays Travel Times by Time of Day*

I-95 Northbound: 17.3 Miles
From: US-1
To: Miami-Dade / Broward County Line

I-95 Southbound: 17.3 Miles
From: Miami-Dade / Broward County Line
To: US-1

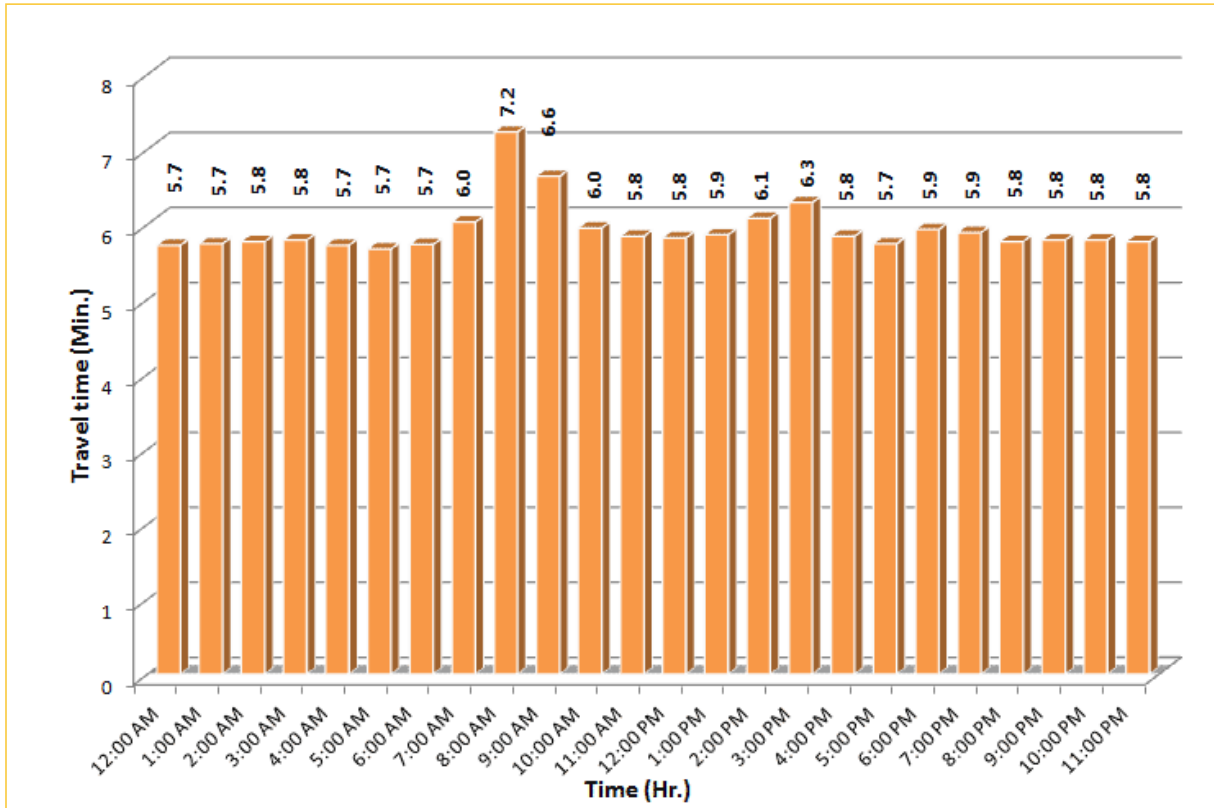



* Twelve-month average from November 1st, 2013 to October 31st, 2014. Excludes express lanes.

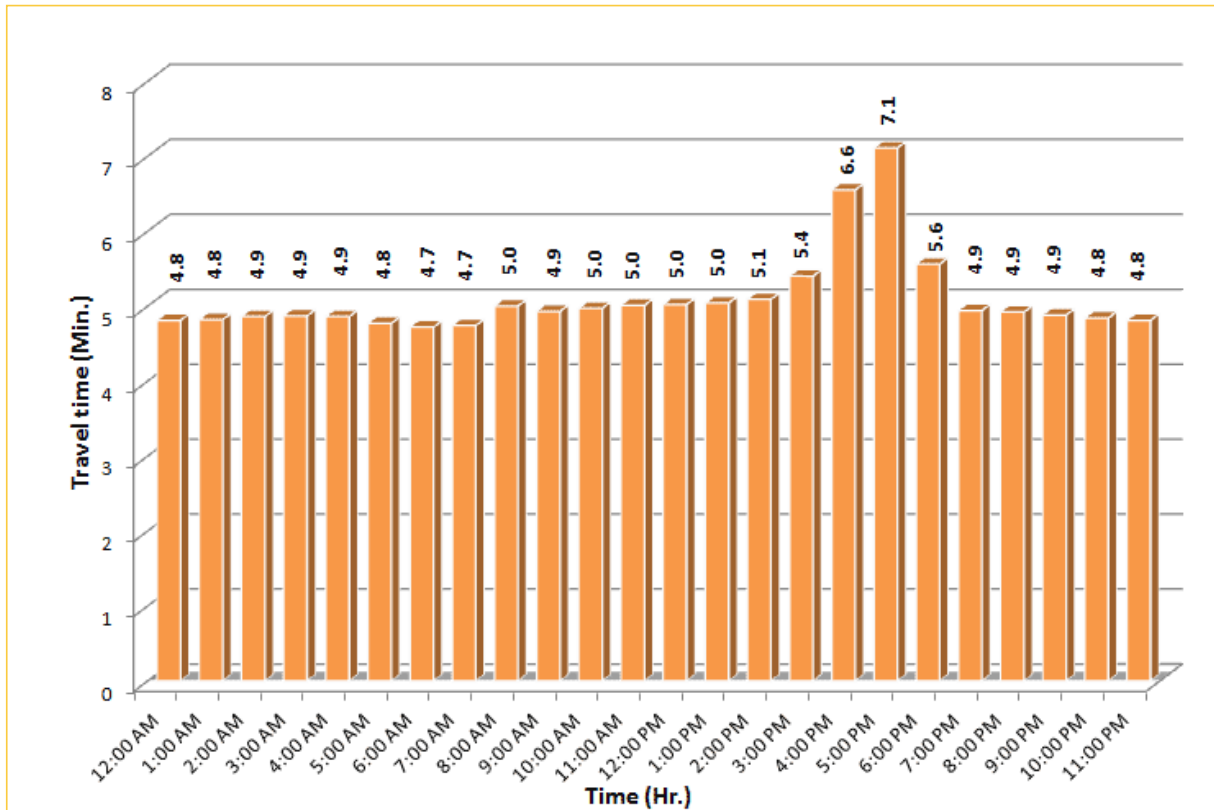
TRAVEL TIME RELIABILITY REPORT

Weekdays Travel Times by Time of Day*

I-195 Eastbound: 4.9 Miles
From: West of North Miami Avenue
To: West of Alton Road



I-195 Westbound: 4.9 Miles
From: West of Alton Road
To: West of North Miami Avenue


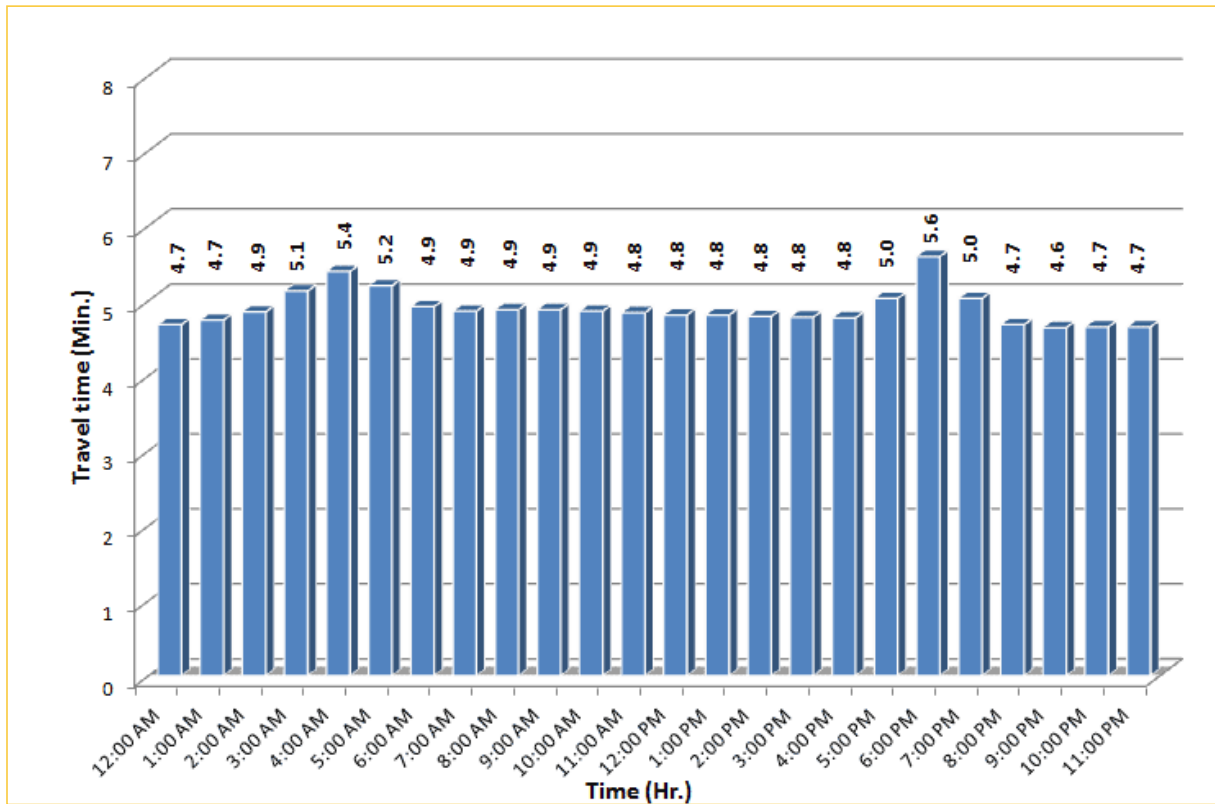


* Twelve-month average from November 1st, 2013 to October 31st, 2014.

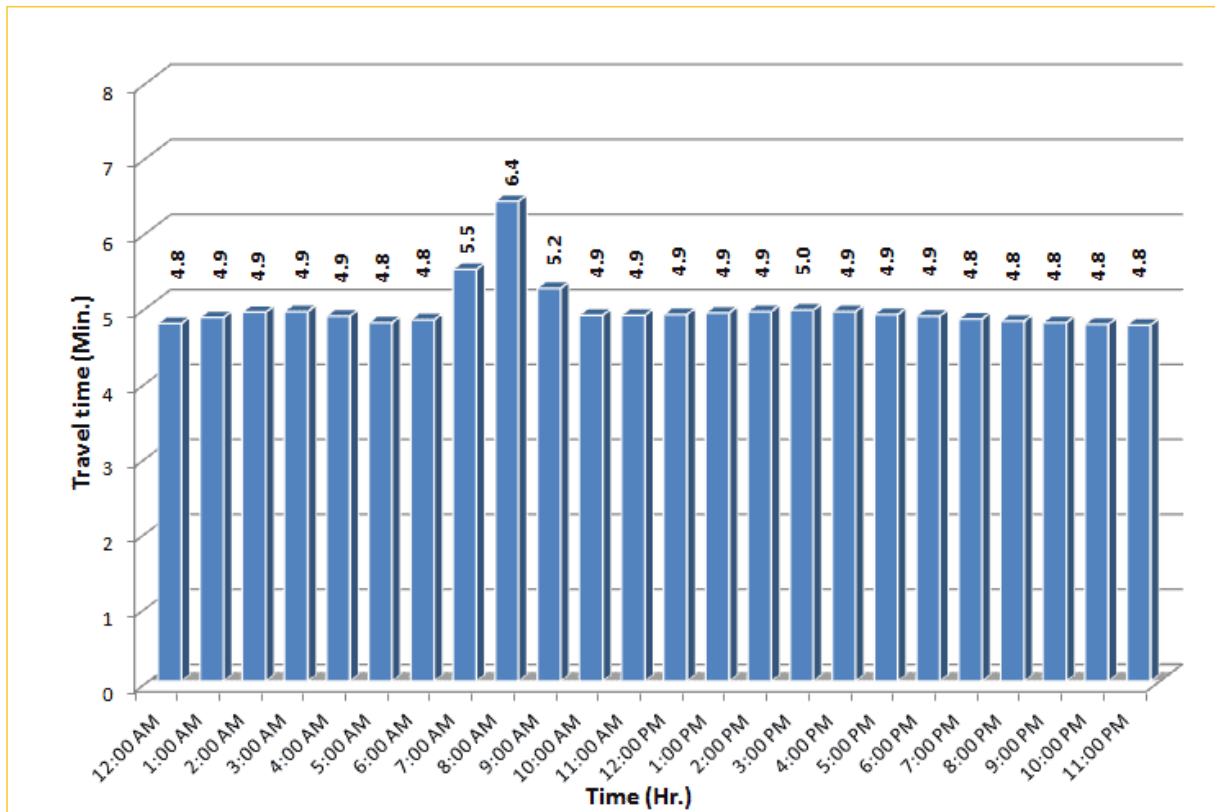
TRAVEL TIME RELIABILITY REPORT

Weekdays Travel Times by Time of Day*

I-75 Northbound: 5.4 Miles
From: West of SR 826
To: North of Florida's Turnpike

I-75 Southbound: 5.4 Miles
From: North of Florida's Turnpike
To: West of SR 826


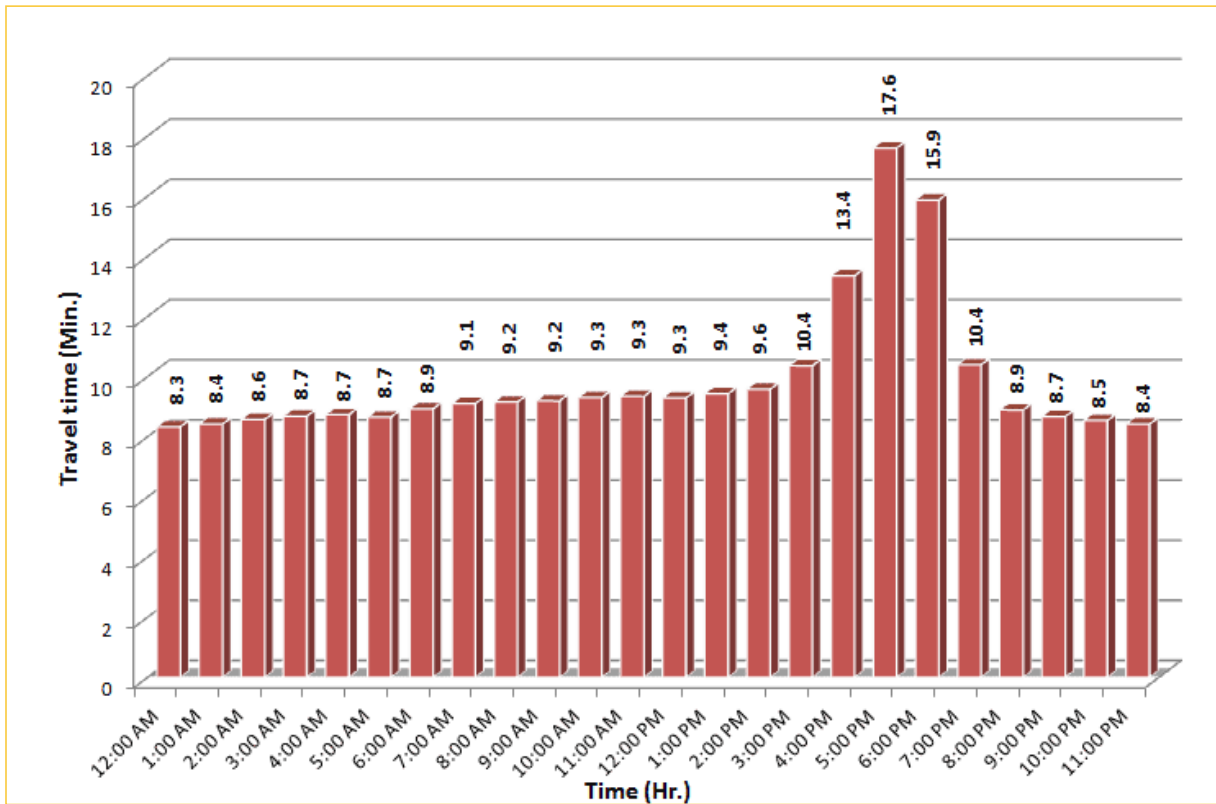



* Twelve-month average from November 1st, 2013 to October 31st, 2014.

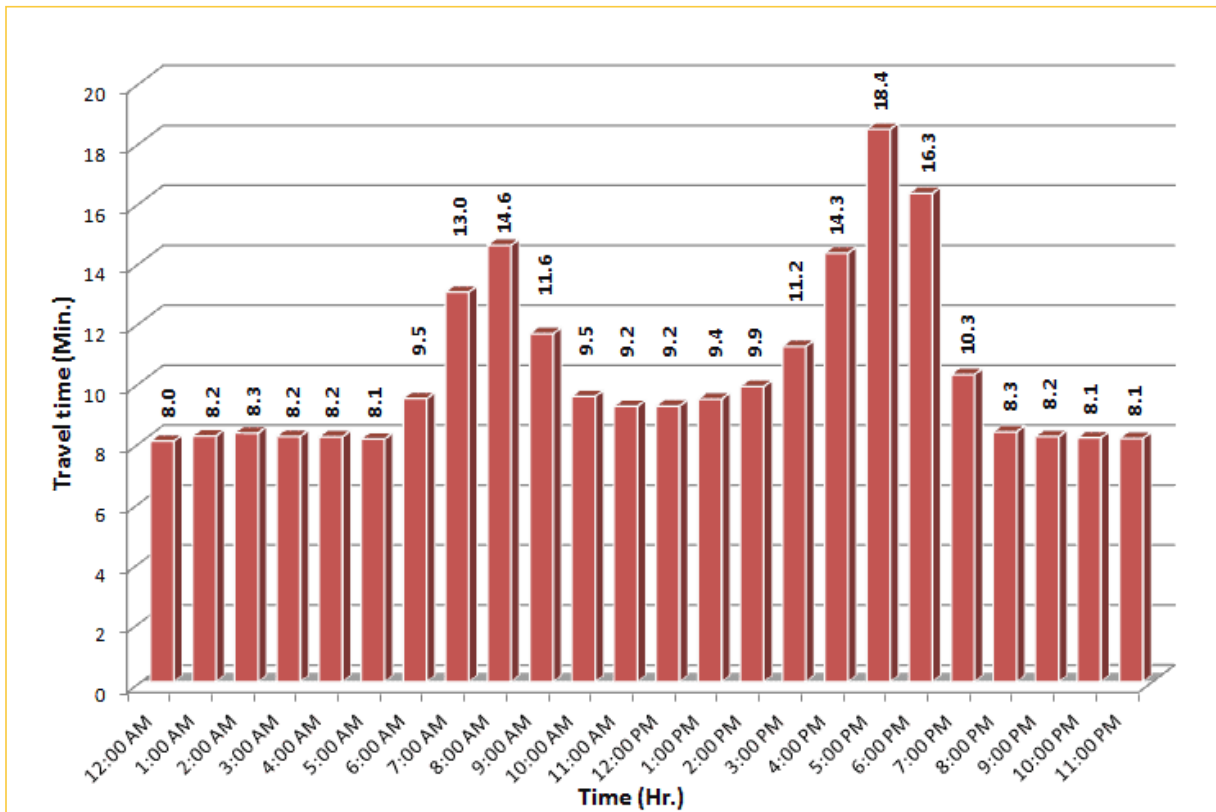
TRAVEL TIME RELIABILITY REPORT

Weekdays Travel Times by Time of Day*

SR 826 Northbound: 8.4 Miles
From: South of NW 25 Street
To: North of NW 154 Street

SR 826 Southbound: 8.4 Miles
From: North of NW 154 Street
To: South of NW 25 Street

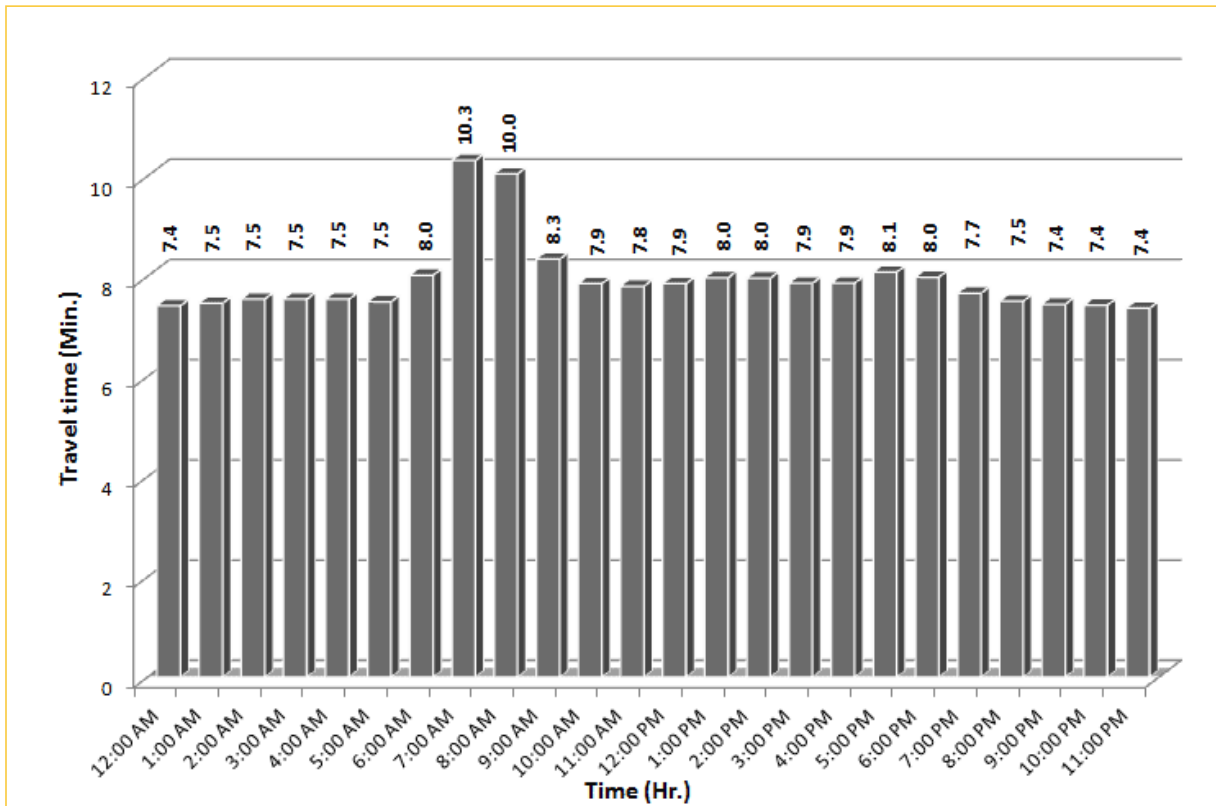



* Twelve-month average from November 1st, 2013 to October 31st, 2014.

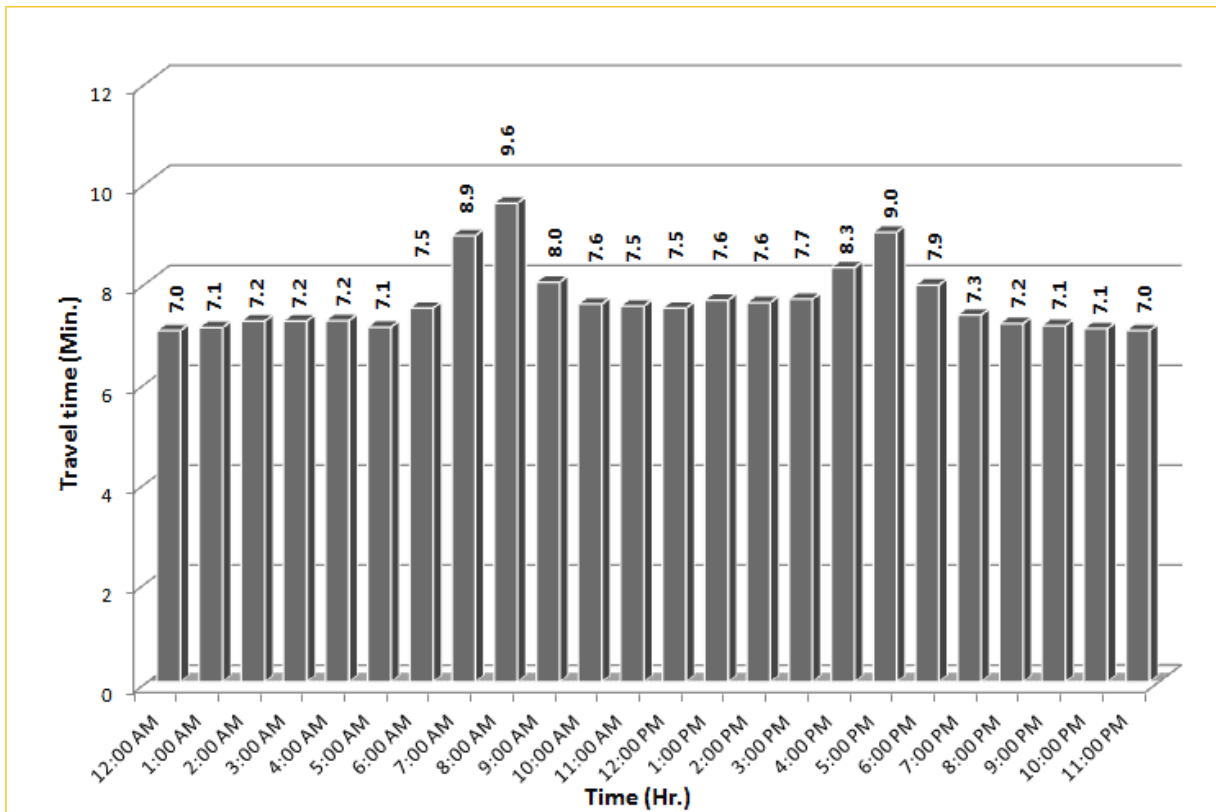
TRAVEL TIME RELIABILITY REPORT

Weekdays Travel Times by Time of Day*

SR 826 Eastbound: 7.1 Miles
From: West of NW 67 Avenue
To: East of NW 12 Avenue



SR 826 Westbound: 7.1 Miles
From: East of NW 12 Avenue
To: West of NW 67 Avenue

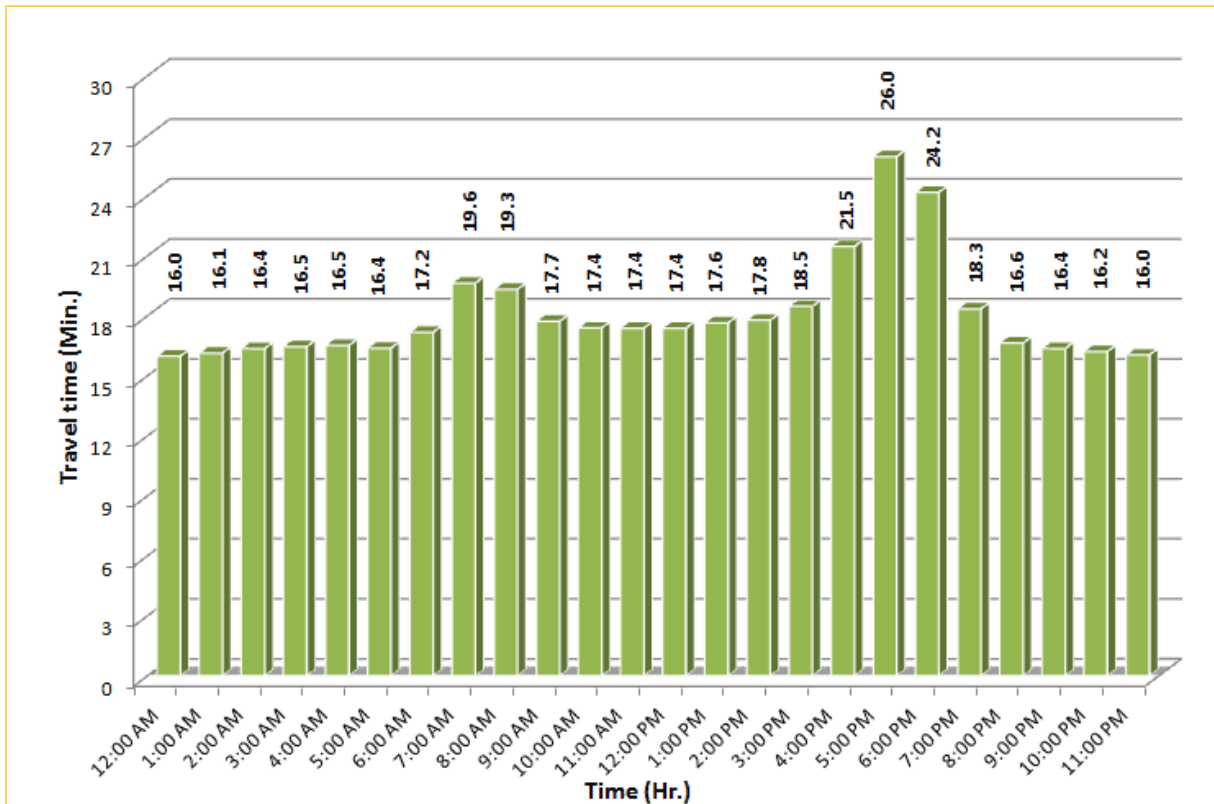


* Twelve-month average from November 1st, 2013 to October 31st, 2014.

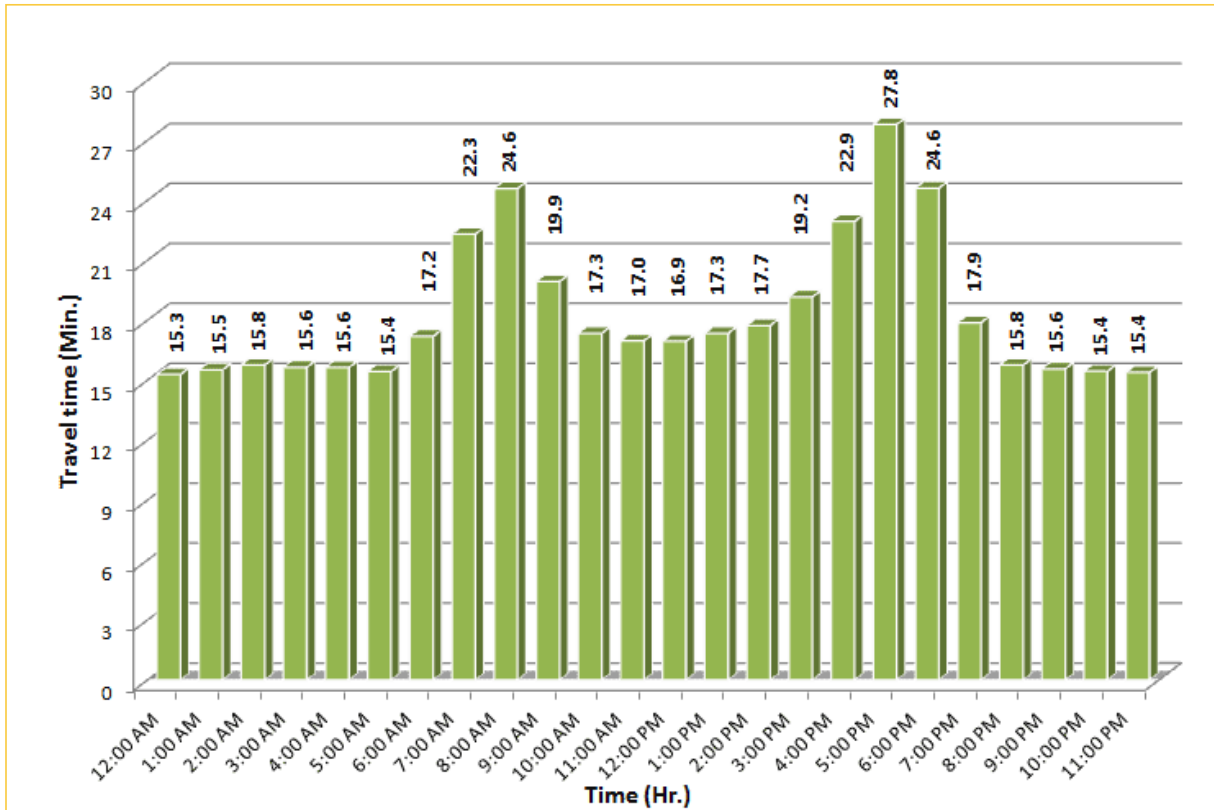
TRAVEL TIME RELIABILITY REPORT

Weekdays Travel Times by Time of Day*

SR 826 Northbound/Eastbound : 15.6 Miles
From: South of NW 25 Street
To: East of NW 12 Avenue

SR 826 Southbound/Westbound: 15.6 Miles
From: East of NW 12 Avenue
To: South of NW 25 Street

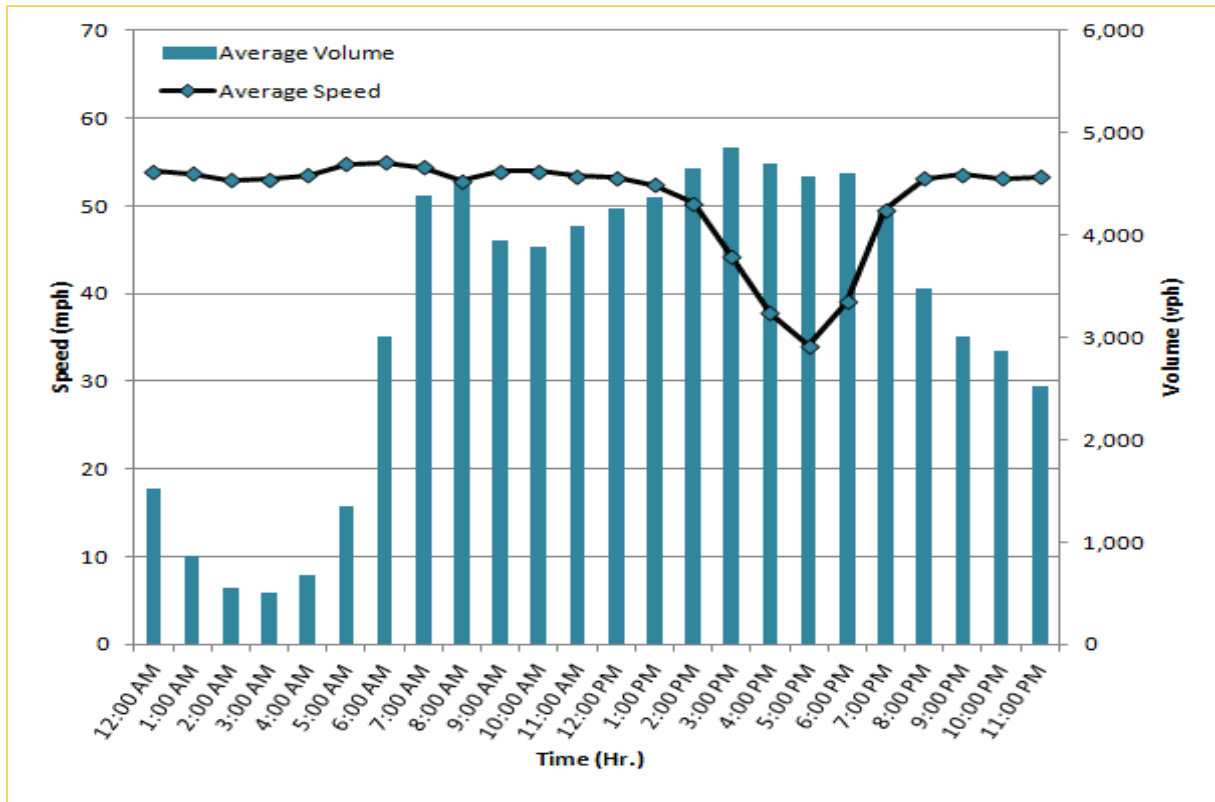



* Twelve-month average from November 1st, 2013 to October 31st, 2014.

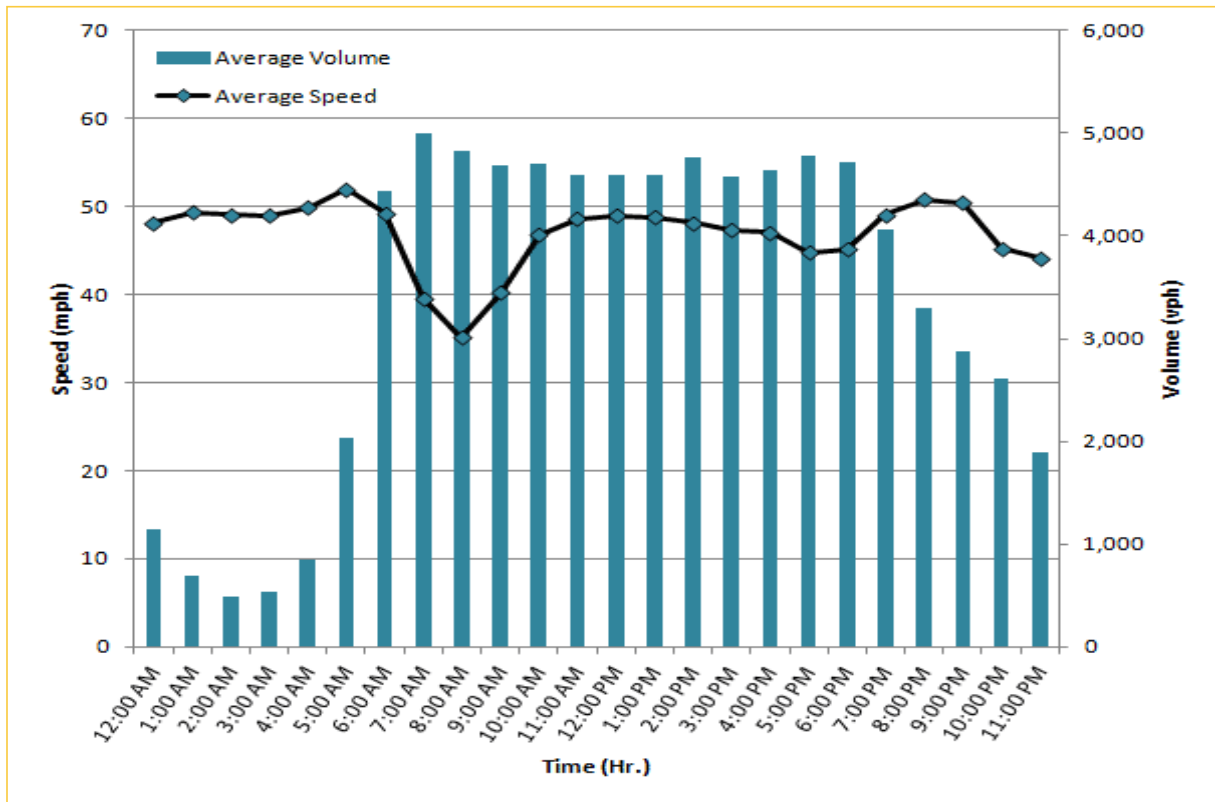
TRAVEL TIME RELIABILITY REPORT

Weekdays Speeds and Volumes by Time of Day*

I-95 Northbound: 17.3 Miles
From: US-1
To: Miami-Dade / Broward County Line

I-95 Southbound: 17.3 Miles
From: Miami-Dade / Broward County Line
To: US-1

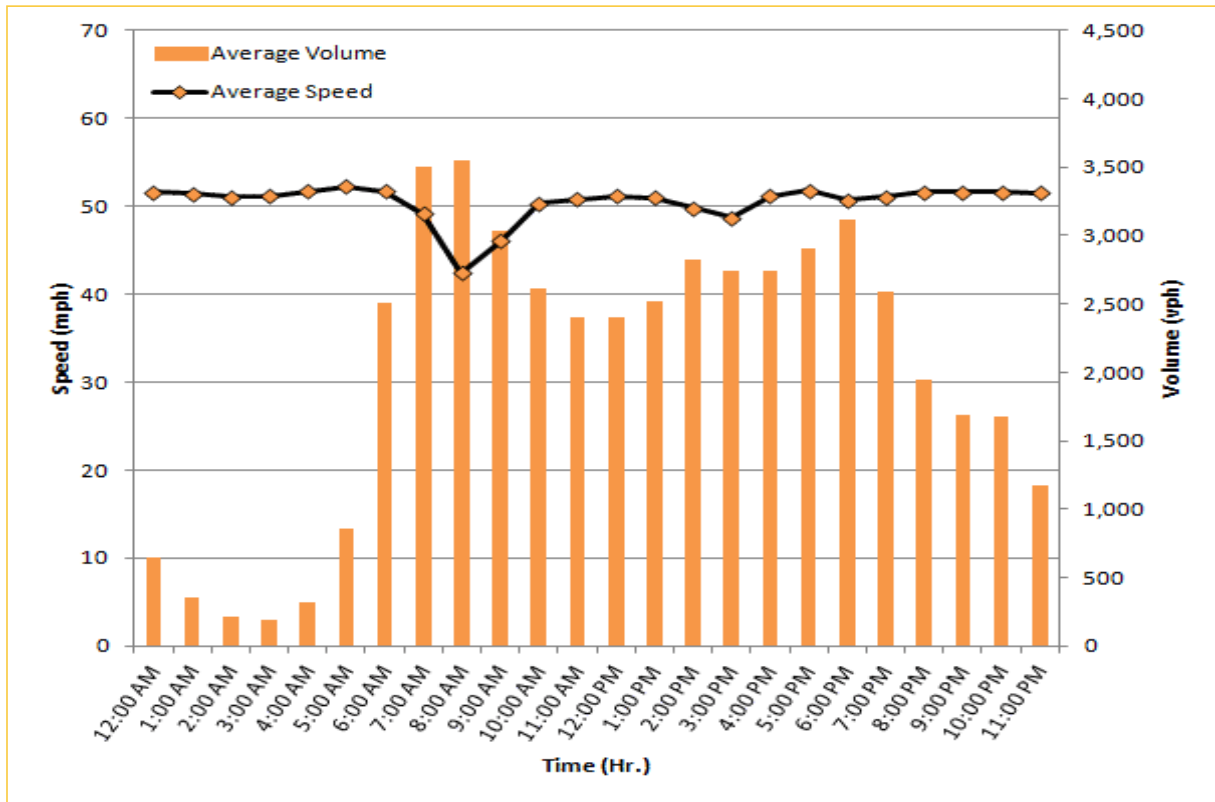



* Twelve-month average from November 1st, 2013 to October 31st, 2014. Excludes express lanes.

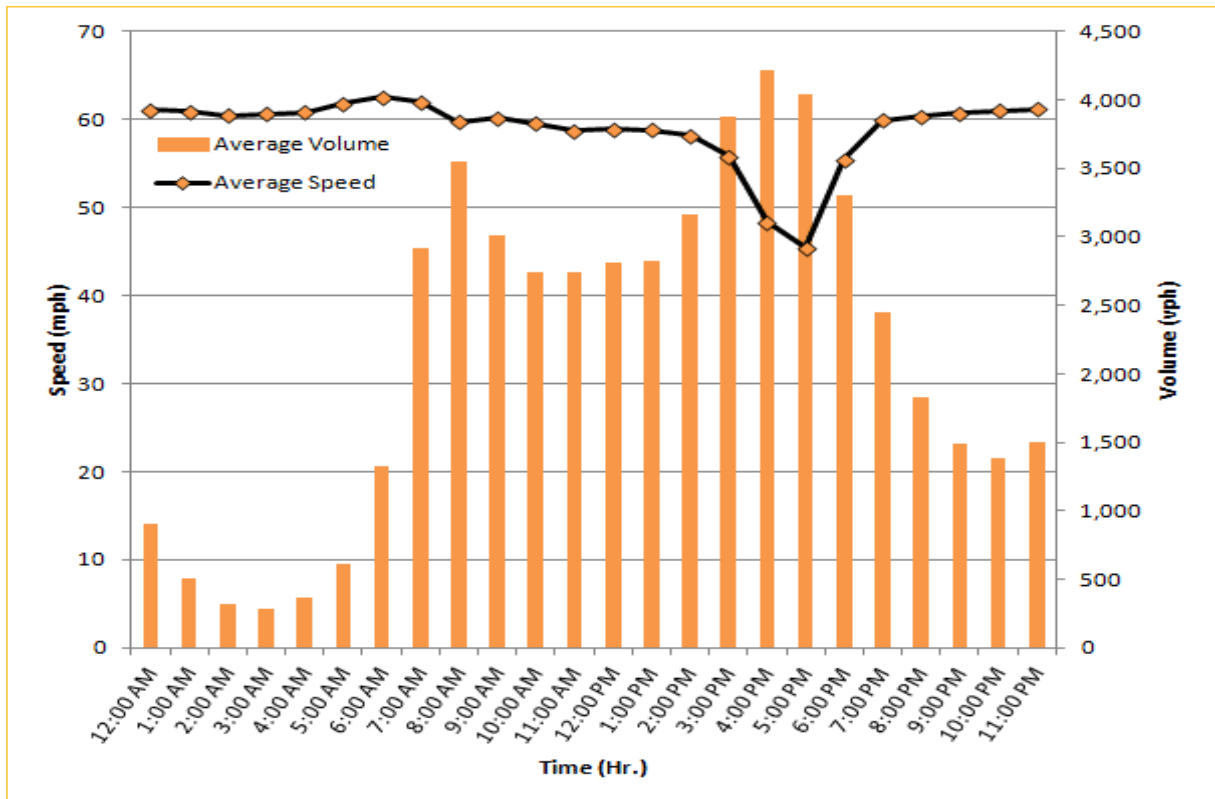
TRAVEL TIME RELIABILITY REPORT

Weekdays Speeds and Volumes by Time of Day*

I-195 Eastbound: 4.9 Miles
From: West of North Miami Avenue
To: West of Alton Road



I-195 Westbound: 4.9 Miles
From: West of Alton Road
To: West of North Miami Avenue

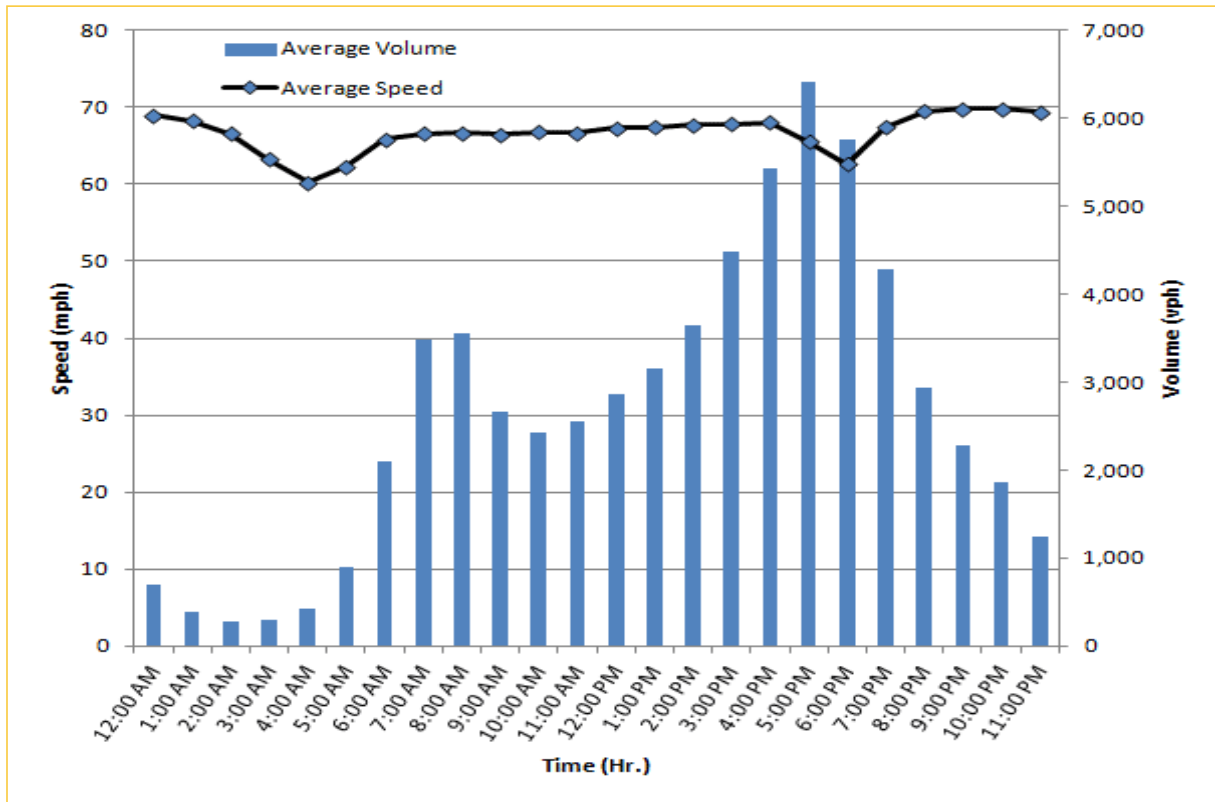


* Twelve-month average from November 1st, 2013 to October 31st, 2014.

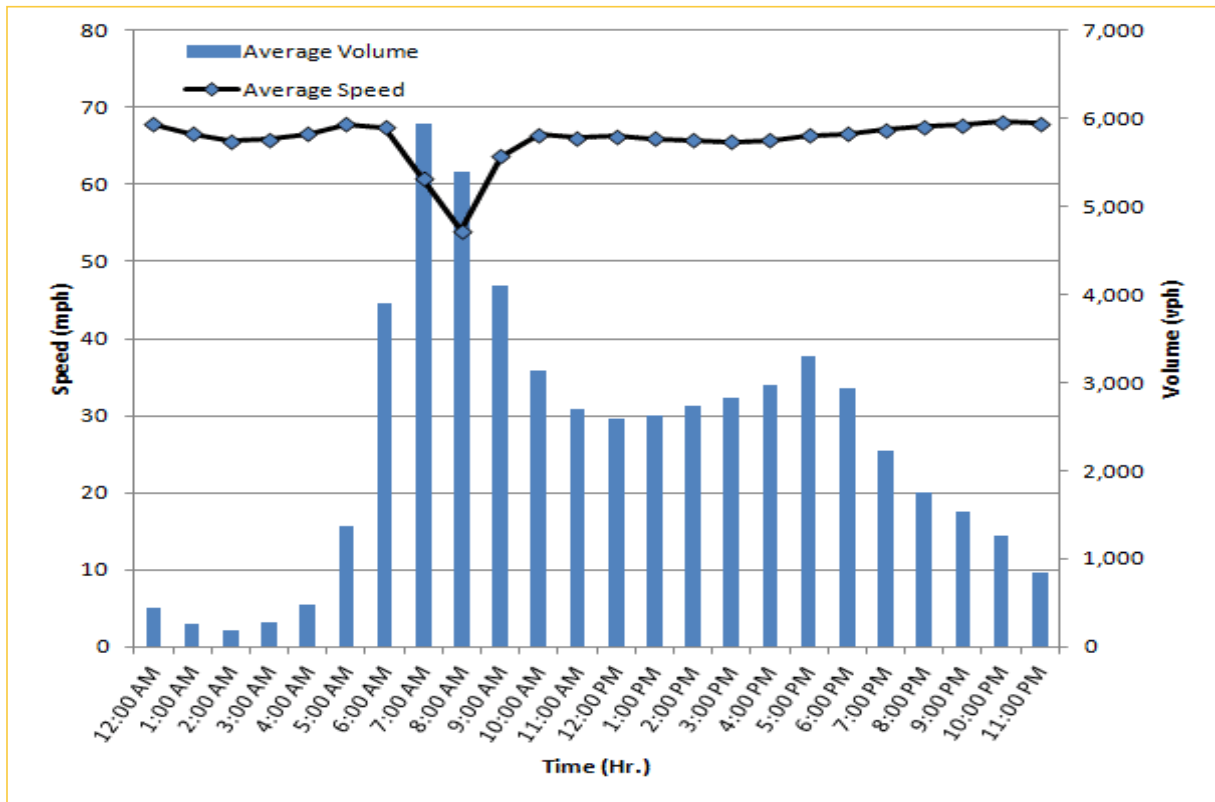
TRAVEL TIME RELIABILITY REPORT

Weekdays Speeds and Volumes by Time of Day*

I-75 Northbound: 5.4 Miles
From: West of SR 826
To: North of Florida's Turnpike



I-75 Southbound: 5.4 Miles
From: North of Florida's Turnpike
To: West of SR 826


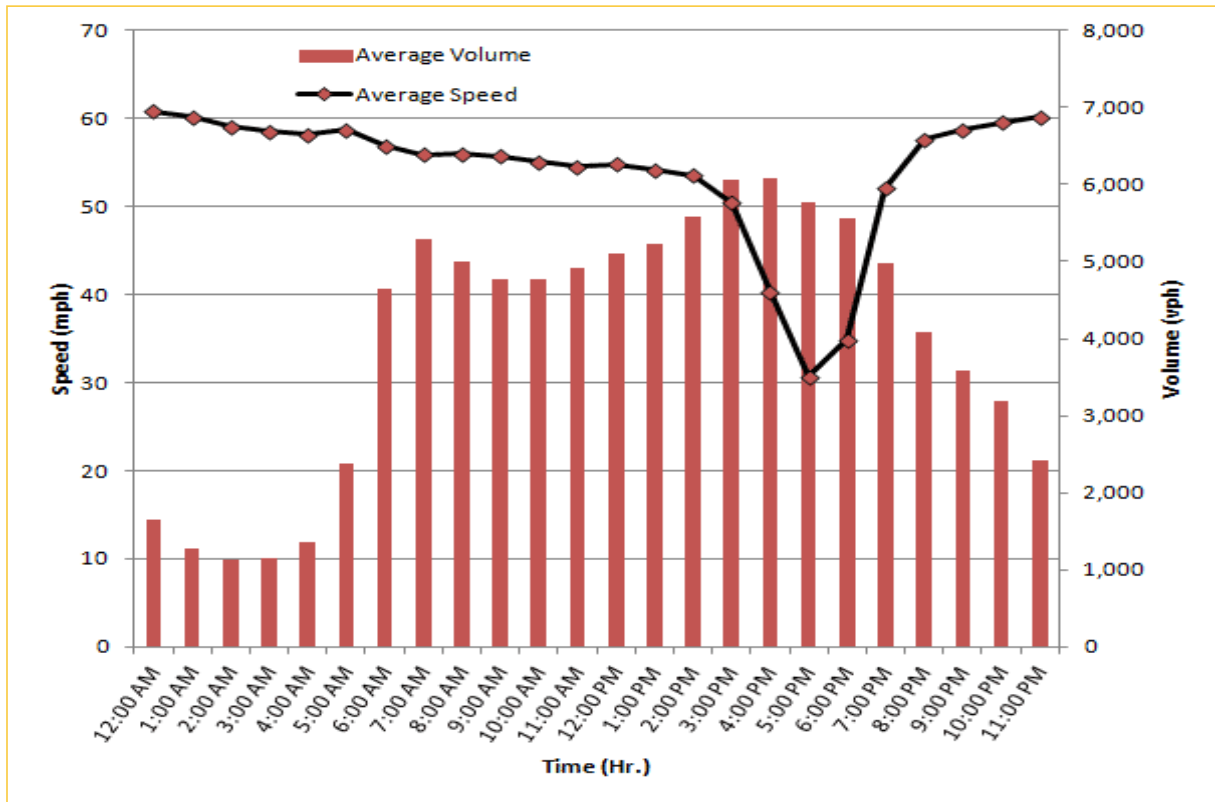


* Twelve-month average from November 1st, 2013 to October 31st, 2014.


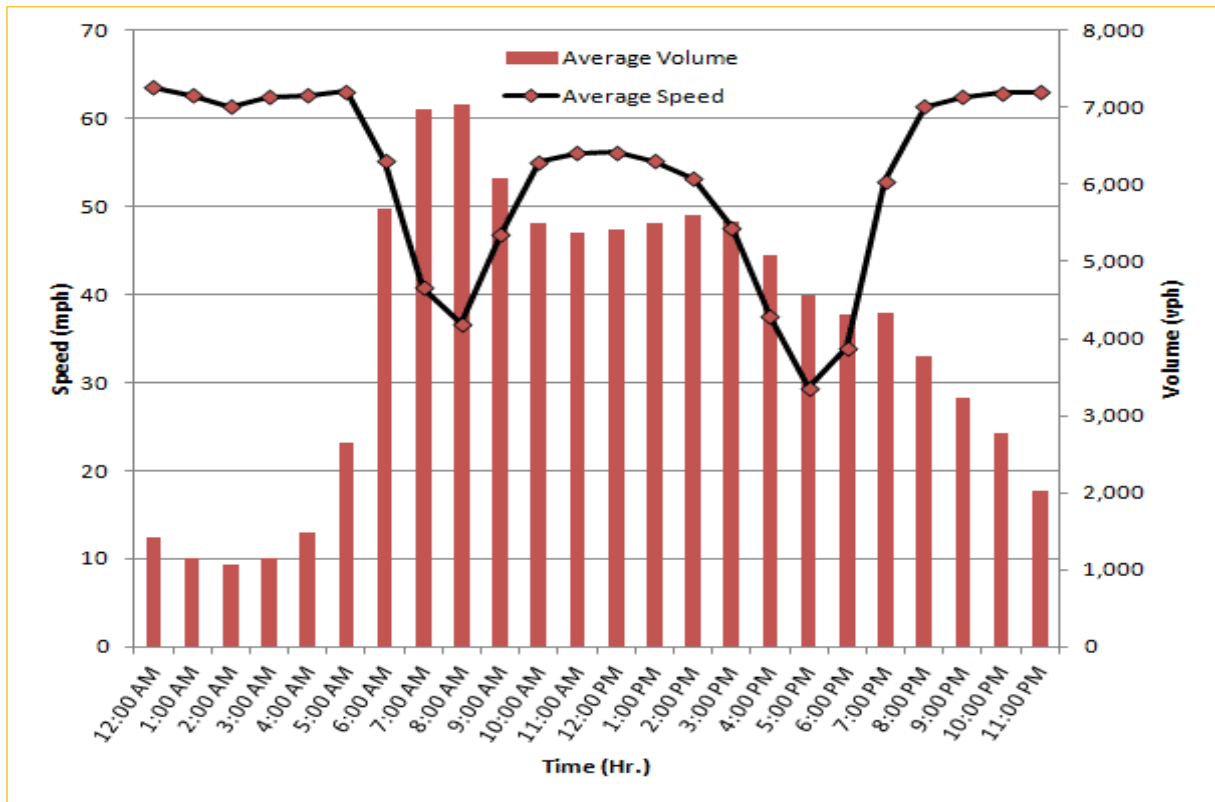
TRAVEL TIME RELIABILITY REPORT

Weekdays Speeds and Volumes by Time of Day*

SR 826 Northbound: 8.4 Miles
From: South of NW 25 Street
To: North of NW 154 Street

SR 826 Southbound: 8.4 Miles
From: North of NW 154 Street
To: South of NW 25 Street

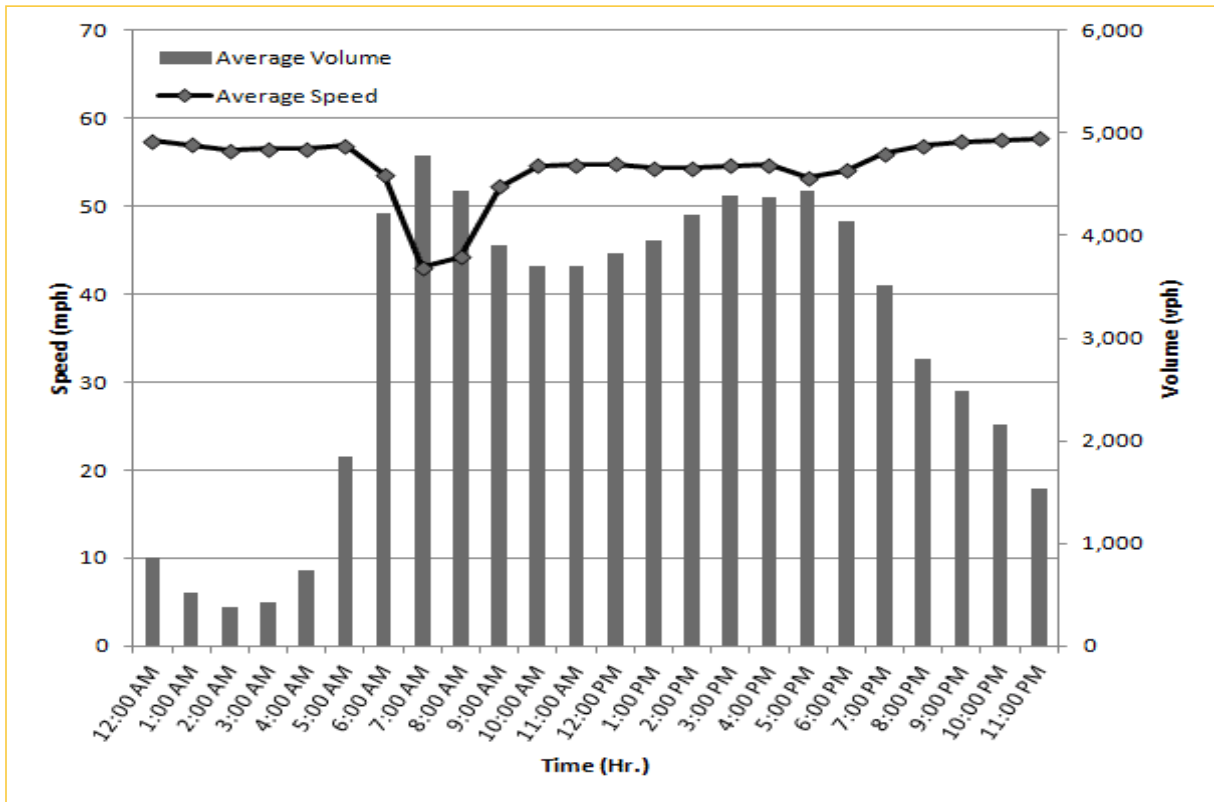



* Twelve-month average from November 1st, 2013 to October 31st, 2014.

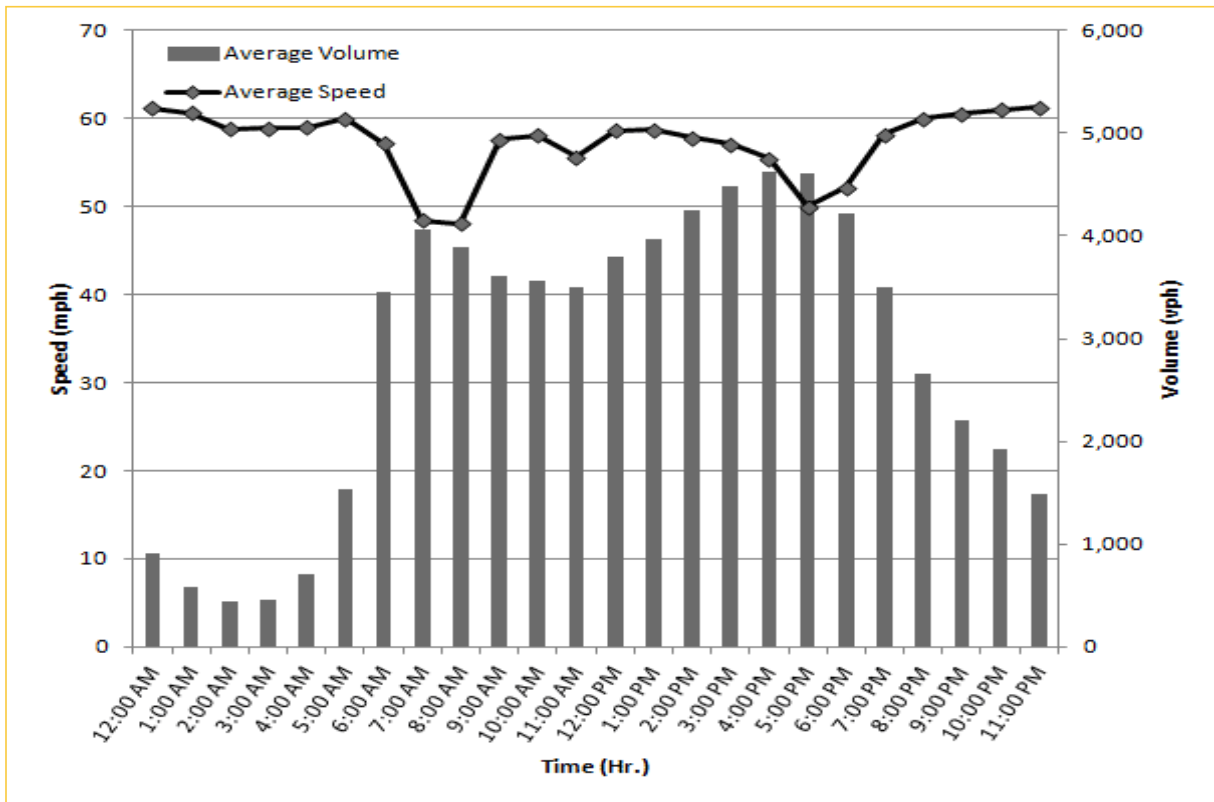
TRAVEL TIME RELIABILITY REPORT

Weekdays Speeds and Volumes by Time of Day*

SR 826 Eastbound: 7.1 Miles
From: West of NW 67 Avenue
To: East of NW 12 Avenue



SR 826 Westbound: 7.1 Miles
From: East of NW 12 Avenue
To: West of NW 67 Avenue

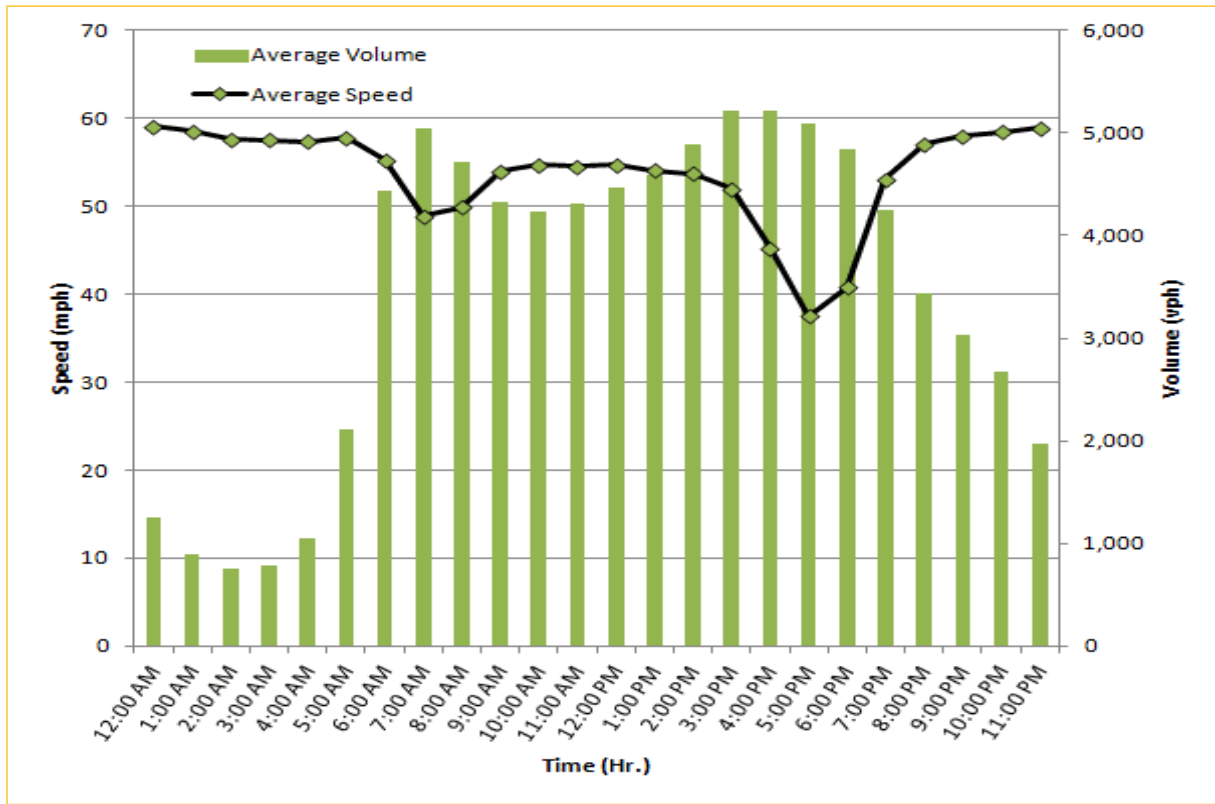


* Twelve-month average from November 1st, 2013 to October 31st, 2014.

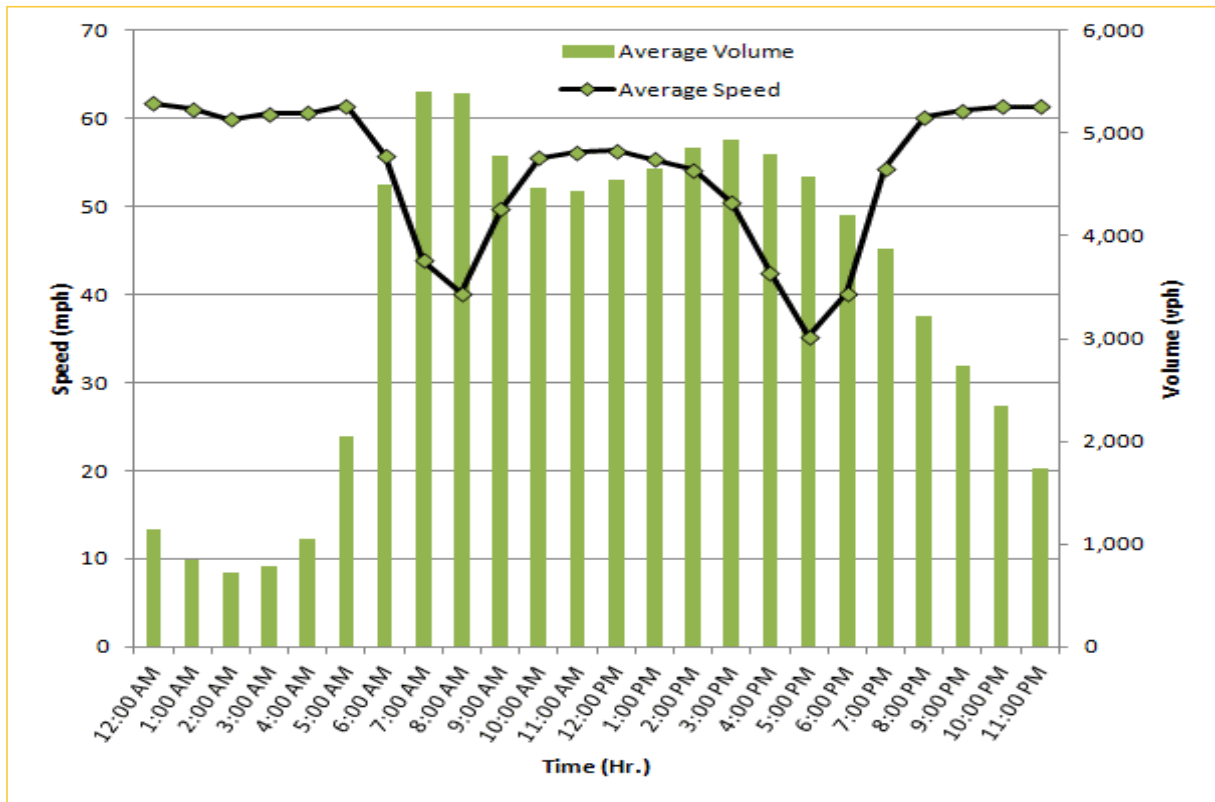
TRAVEL TIME RELIABILITY REPORT

Weekdays Speeds and Volumes by Time of Day*

SR 826 Northbound/Eastbound : 15.6 Miles
From: South of NW 25 Street
To: East of NW 12 Avenue

SR 826 Southbound/Westbound: 15.6 Miles
From: East of NW 12 Avenue
To: South of NW 25 Street

* Twelve-month average from November 1st, 2013 to October 31st, 2014.