

## TRAVEL TIME RELIABILITY REPORT

### Travel Time Index by Roadway\*

| Time         | I-95          |               | I-195         |               | I-75          |               | SR 826        |               |               |               |               |               |
|--------------|---------------|---------------|---------------|---------------|---------------|---------------|---------------|---------------|---------------|---------------|---------------|---------------|
|              | NB            | SB            | EB            | WB            | NB            | SB            | NB            | EB            | NB/EB         | SB            | WB            | SB/WB         |
| 0:00         | 1.16          | 1.27          | 1.16          | 1.01          | 0.94          | 0.97          | 1.00          | 1.00          | 1.00          | 0.98          | 0.98          | 0.98          |
| 1:00         | 1.18          | 1.25          | 1.16          | 1.01          | 0.95          | 0.98          | 1.01          | 1.00          | 1.01          | 1.01          | 0.99          | 1.00          |
| 2:00         | 1.20          | 1.27          | 1.17          | 1.02          | 0.98          | 1.00          | 1.03          | 1.02          | 1.02          | 1.02          | 1.01          | 1.01          |
| 3:00         | 1.19          | 1.27          | 1.17          | 1.01          | 1.03          | 1.00          | 1.04          | 1.02          | 1.03          | 1.00          | 1.01          | 1.01          |
| 4:00         | 1.16          | 1.23          | 1.16          | 1.01          | 1.08          | 0.99          | 1.05          | 1.02          | 1.03          | 1.00          | 1.01          | 1.01          |
| 5:00         | 1.12          | 1.16          | 1.15          | 1.00          | 1.05          | 0.97          | 1.04          | 1.01          | 1.02          | 1.00          | 1.00          | 1.00          |
| 6:00         | 1.10          | 1.22          | 1.16          | 0.98          | 0.99          | 0.97          | 1.07          | 1.08          | 1.07          | 1.15          | 1.03          | 1.10          |
| 7:00         | 1.12          | 1.58          | 1.20          | 0.99          | 0.97          | 1.09          | 1.10          | 1.39          | 1.24          | 1.59          | 1.21          | 1.41          |
| 8:00         | 1.16          | 1.79          | 1.43          | 1.03          | 0.98          | 1.26          | 1.11          | 1.38          | 1.22          | 1.81          | 1.31          | 1.58          |
| 9:00         | 1.13          | 1.57          | 1.36          | 1.02          | 0.98          | 1.04          | 1.09          | 1.14          | 1.11          | 1.40          | 1.10          | 1.26          |
| 10:00        | 1.13          | 1.31          | 1.22          | 1.03          | 0.98          | 0.99          | 1.10          | 1.07          | 1.08          | 1.15          | 1.05          | 1.10          |
| 11:00        | 1.13          | 1.23          | 1.18          | 1.04          | 0.97          | 0.99          | 1.11          | 1.05          | 1.08          | 1.12          | 1.05          | 1.09          |
| 12:00        | 1.13          | 1.22          | 1.17          | 1.04          | 0.97          | 0.99          | 1.12          | 1.06          | 1.09          | 1.14          | 1.05          | 1.10          |
| 13:00        | 1.15          | 1.23          | 1.18          | 1.05          | 0.97          | 1.00          | 1.14          | 1.07          | 1.10          | 1.18          | 1.06          | 1.13          |
| 14:00        | 1.22          | 1.24          | 1.23          | 1.05          | 0.97          | 1.00          | 1.16          | 1.07          | 1.12          | 1.24          | 1.07          | 1.17          |
| 15:00        | 1.39          | 1.28          | 1.26          | 1.11          | 0.96          | 1.00          | 1.25          | 1.06          | 1.16          | 1.40          | 1.07          | 1.25          |
| 16:00        | 1.60          | 1.29          | 1.17          | 1.32          | 0.96          | 1.00          | 1.60          | 1.06          | 1.34          | 1.74          | 1.15          | 1.47          |
| 17:00        | 1.79          | 1.36          | 1.15          | 1.40          | 1.01          | 0.99          | 2.09          | 1.08          | 1.60          | 2.27          | 1.24          | 1.79          |
| 18:00        | 1.59          | 1.34          | 1.18          | 1.13          | 1.10          | 0.98          | 1.88          | 1.07          | 1.49          | 2.03          | 1.11          | 1.60          |
| 19:00        | 1.25          | 1.24          | 1.18          | 1.03          | 1.00          | 0.98          | 1.23          | 1.03          | 1.14          | 1.27          | 1.03          | 1.16          |
| 20:00        | 1.15          | 1.18          | 1.17          | 1.03          | 0.95          | 0.97          | 1.07          | 1.01          | 1.04          | 1.03          | 1.01          | 1.02          |
| 21:00        | 1.14          | 1.19          | 1.17          | 1.02          | 0.94          | 0.97          | 1.04          | 1.00          | 1.02          | 1.01          | 1.00          | 1.00          |
| 22:00        | 1.16          | 1.35          | 1.17          | 1.01          | 0.94          | 0.96          | 1.02          | 1.00          | 1.01          | 1.00          | 0.99          | 1.00          |
| 23:00        | 1.15          | 1.38          | 1.17          | 1.01          | 0.94          | 0.96          | 1.01          | 0.99          | 1.00          | 0.99          | 0.99          | 0.99          |
| <b>FFS**</b> | <b>59 mph</b> | <b>59 mph</b> | <b>58 mph</b> | <b>62 mph</b> | <b>66 mph</b> | <b>66 mph</b> | <b>61 mph</b> | <b>57 mph</b> | <b>59 mph</b> | <b>63 mph</b> | <b>59 mph</b> | <b>61 mph</b> |

*Maximum Travel Time Index. \*\* FFS: Free Flow Speed*

**Travel Time Index (TTI)** is a measure of average conditions that indicates how much longer, **on average**, travel times are during congestion compared to during light traffic.

**Real World Example:** A TTI of 1.60 means that for a trip that usually takes 10 minutes in light traffic, a traveler should budget for an additional 6 minutes **on average**.

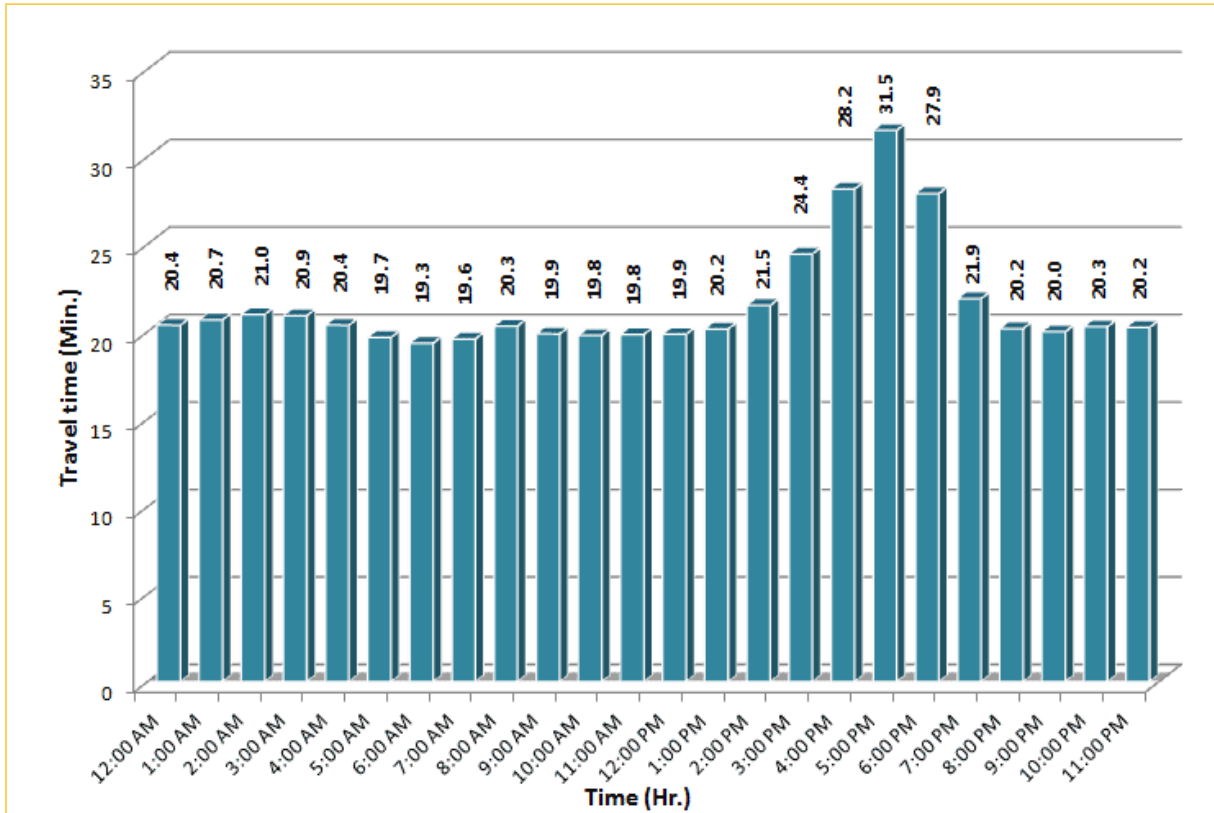


\* Twelve-month average from August 1<sup>st</sup>, 2013 to July 31<sup>st</sup>, 2014.

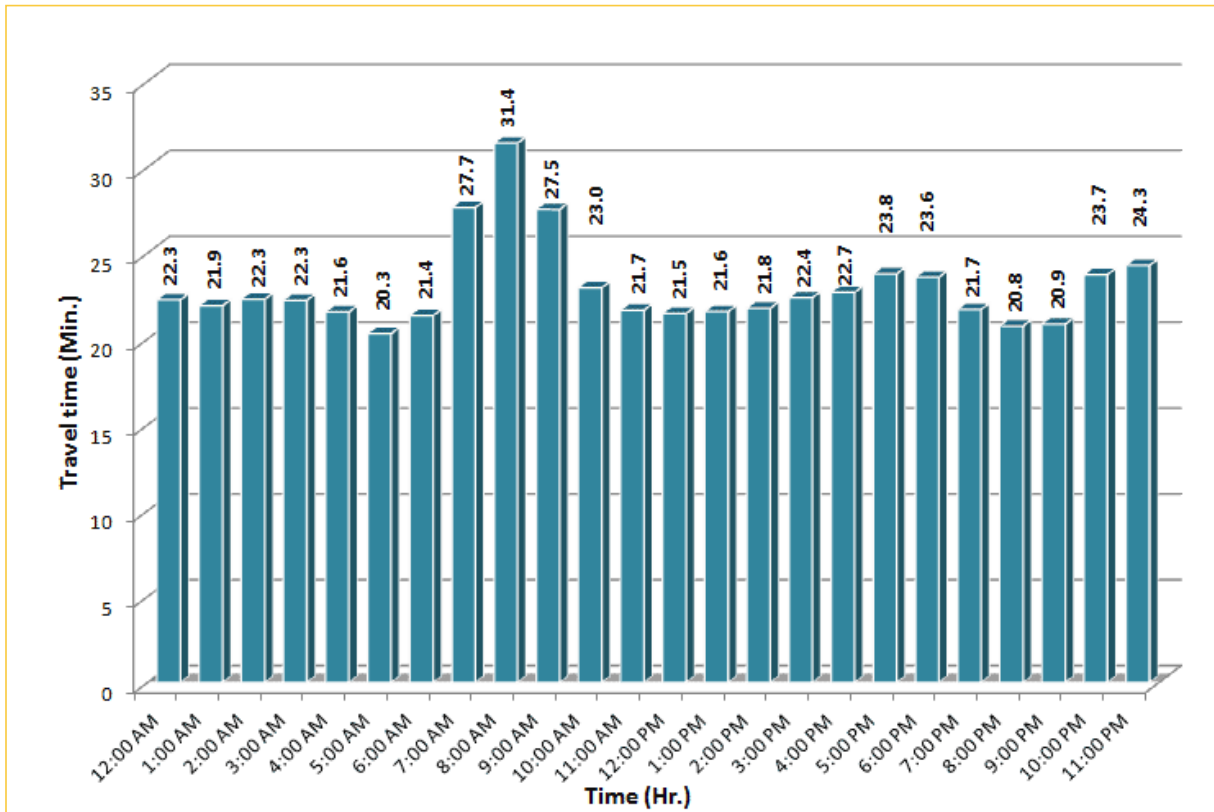
## TRAVEL TIME RELIABILITY REPORT

### Weekdays Travel Times by Time of Day\*

**I-95 Northbound: 17.3 Miles**  
From: US-1  
To: Miami-Dade / Broward County Line

**I-95 Southbound: 17.3 Miles**  
From: Miami-Dade / Broward County Line  
To: US-1

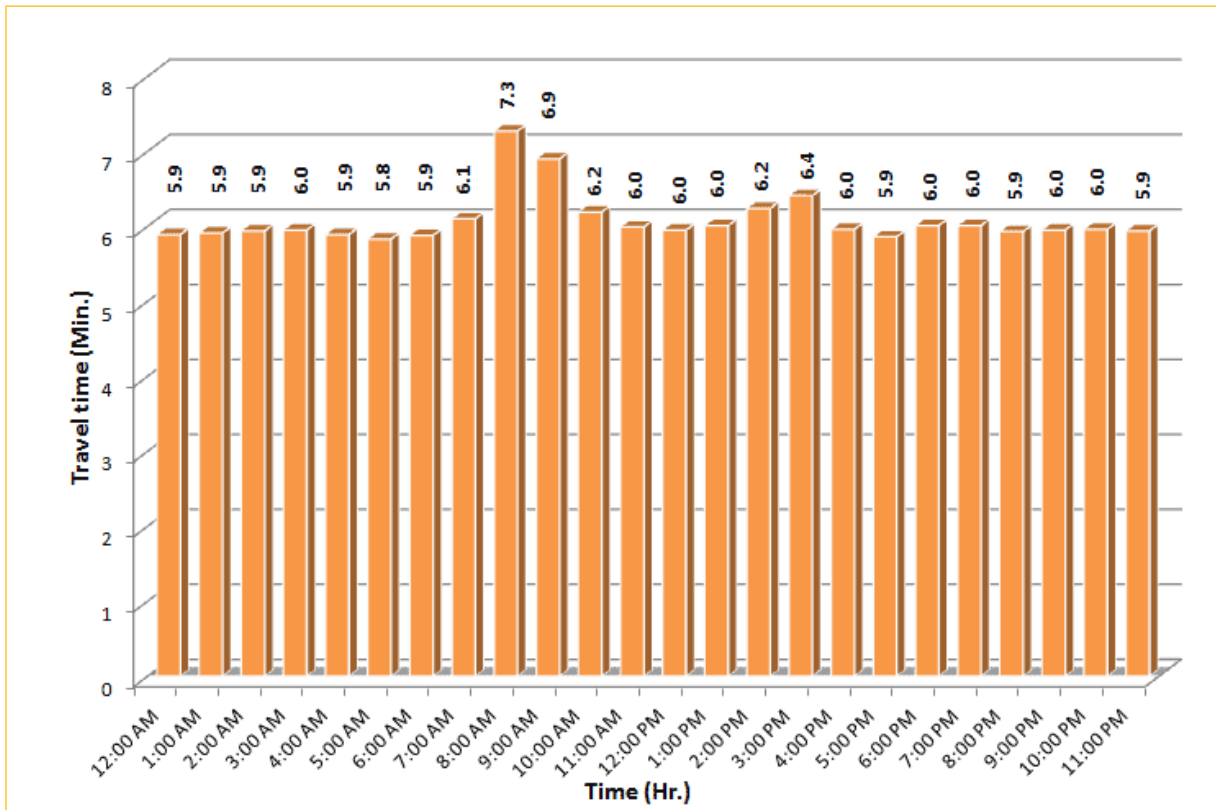



\* Twelve-month average from August 1<sup>st</sup>, 2013 to July 31<sup>st</sup>, 2014. Excludes express lanes.

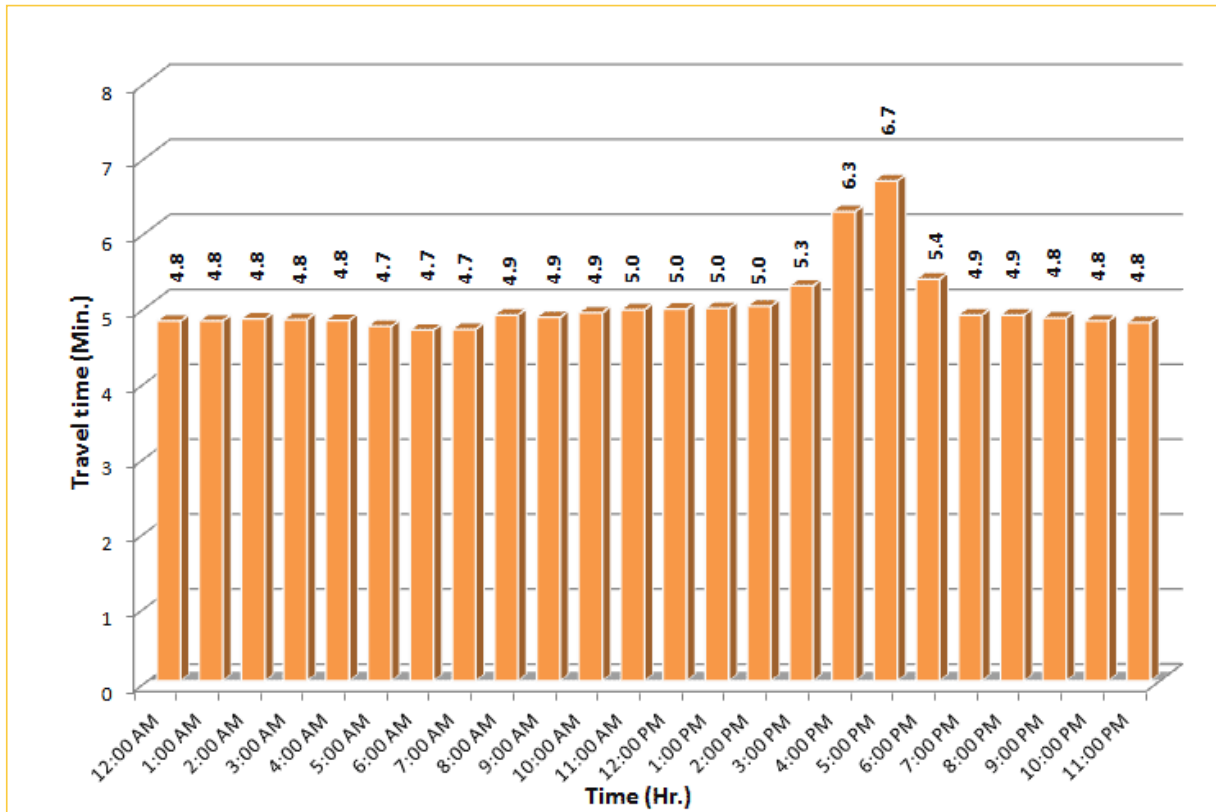
## TRAVEL TIME RELIABILITY REPORT

### Weekdays Travel Times by Time of Day\*

**I-195 Eastbound: 4.9 Miles**  
From: West of North Miami Avenue  
To: West of Alton Road



**I-195 Westbound: 4.9 Miles**  
From: West of Alton Road  
To: West of North Miami Avenue


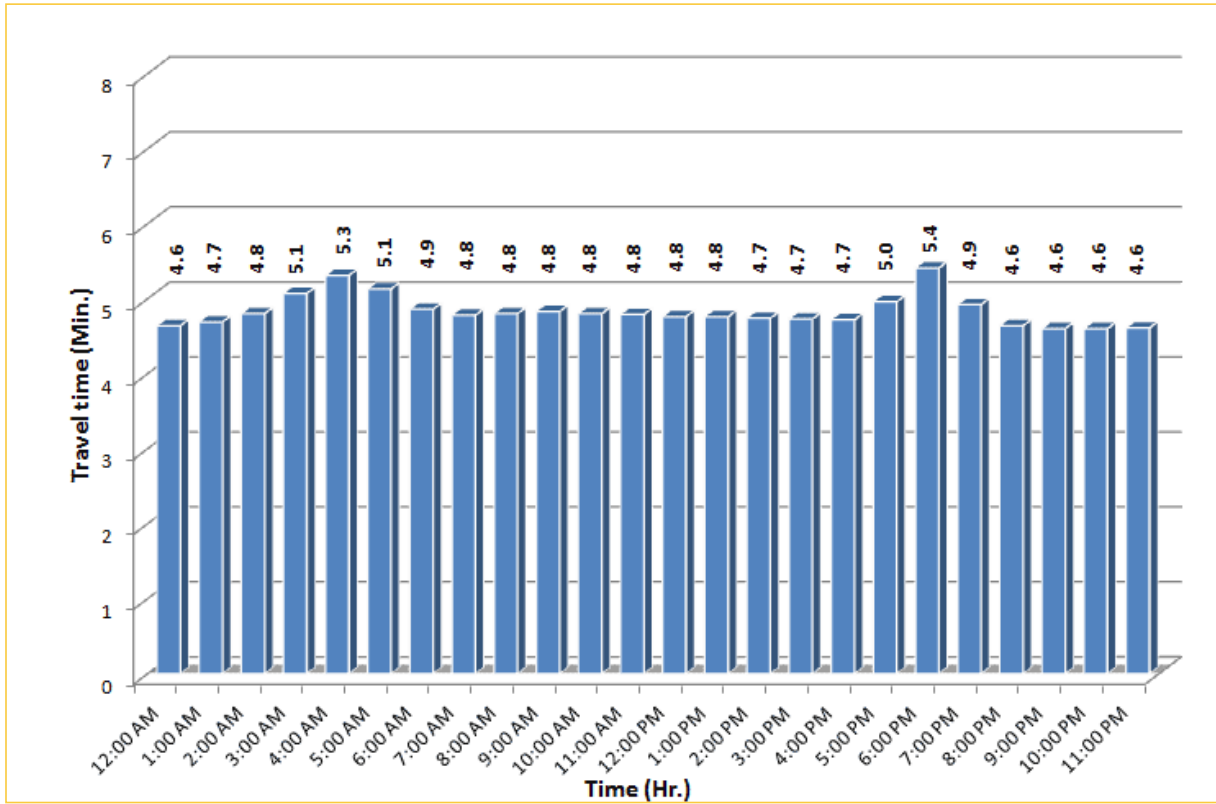


\* Twelve-month average from August 1<sup>st</sup>, 2013 to July 31<sup>st</sup>, 2014.

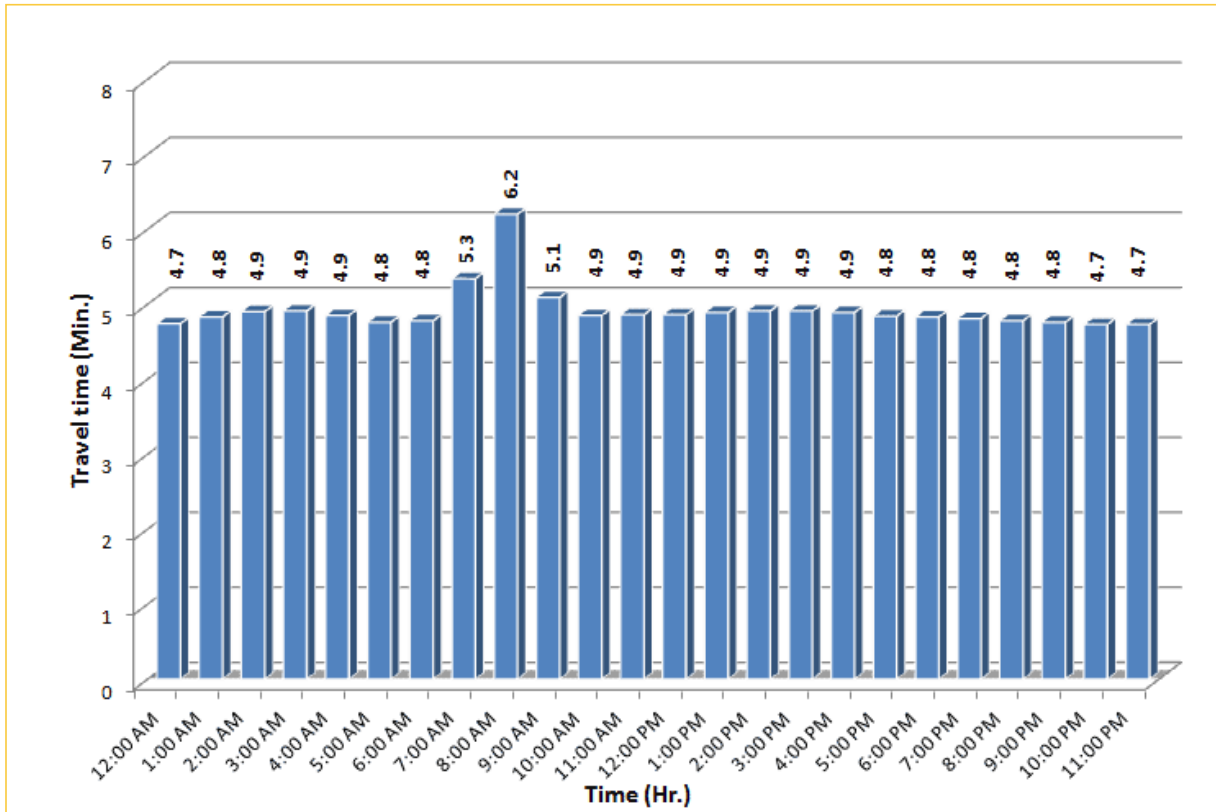
# TRAVEL TIME RELIABILITY REPORT

## Weekdays Travel Times by Time of Day\*

**I-75 Northbound: 5.4 Miles**  
From: West of SR 826  
To: North of Florida's Turnpike

**I-75 Southbound: 5.4 Miles**  
From: North of Florida's Turnpike  
To: West of SR 826

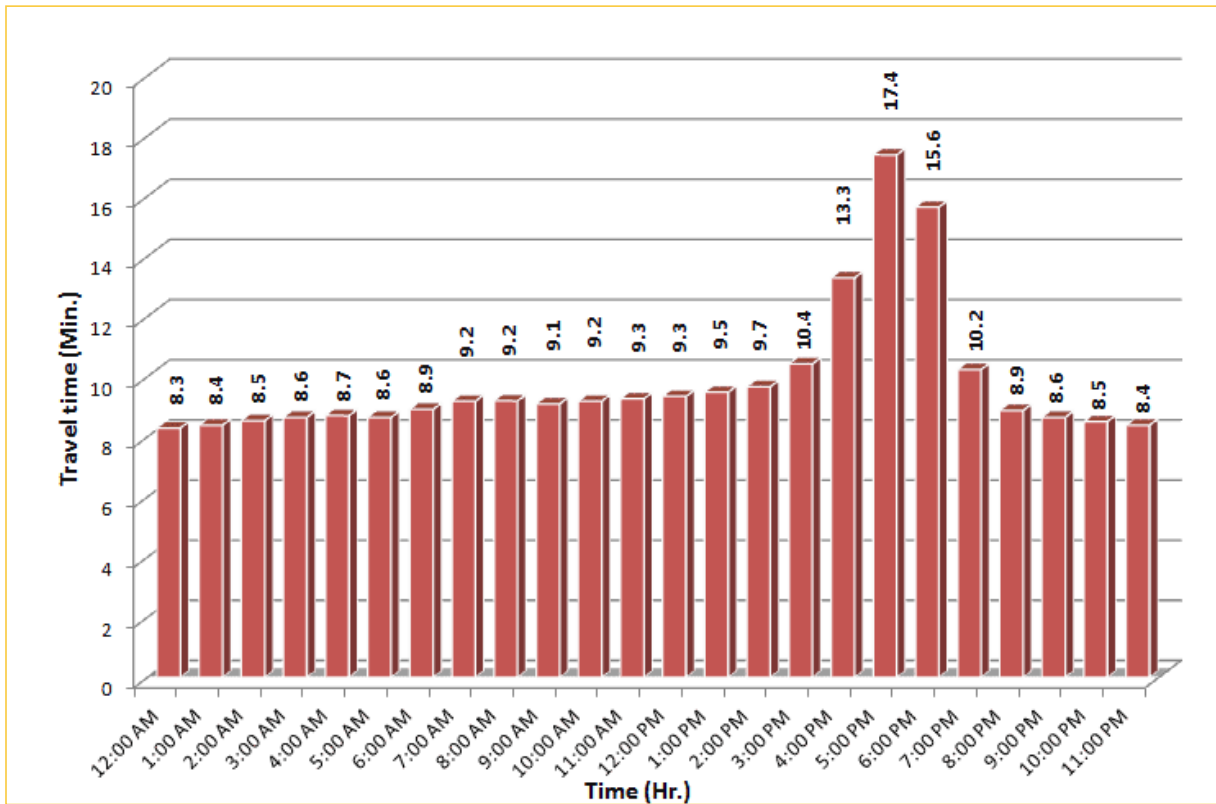



\* Twelve-month average from August 1<sup>st</sup>, 2013 to July 31<sup>st</sup>, 2014.

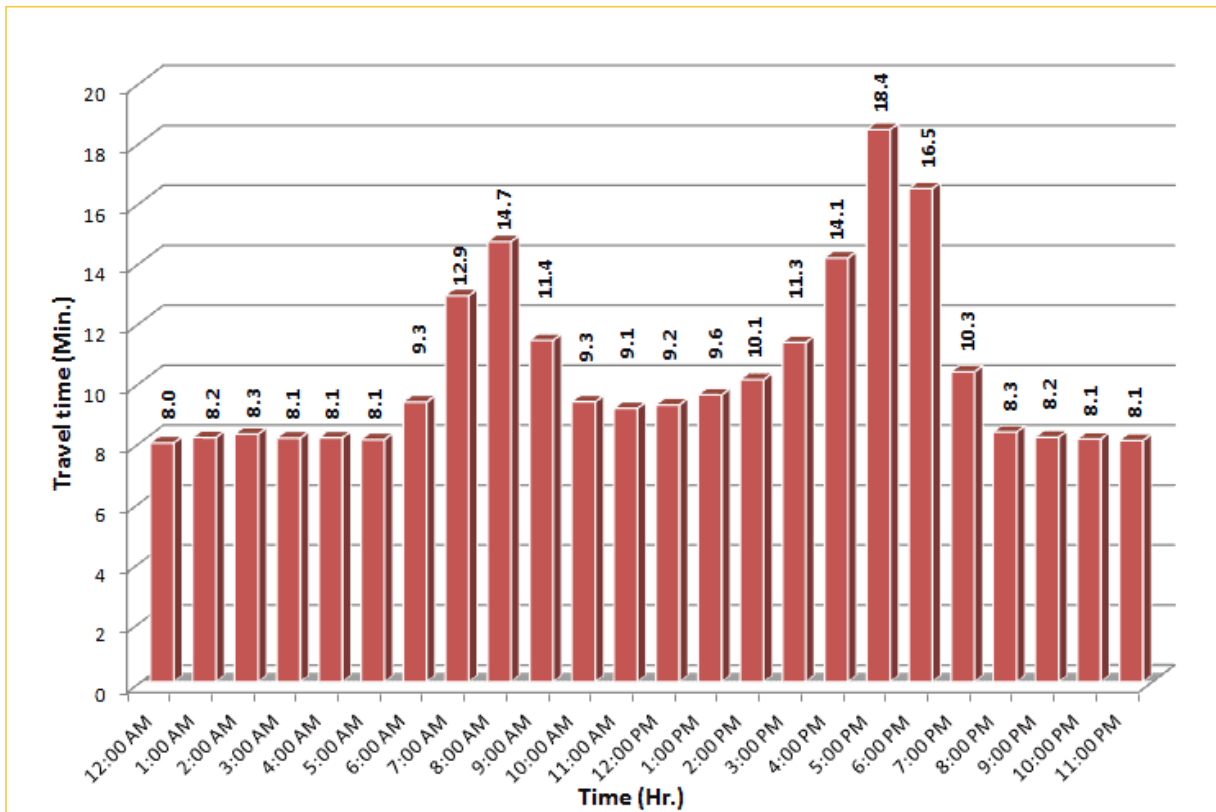
## TRAVEL TIME RELIABILITY REPORT

### Weekdays Travel Times by Time of Day\*

**SR 826 Northbound: 8.4 Miles**  
From: South of NW 25 Street  
To: North of NW 154 Street



**SR 826 Southbound: 8.4 Miles**  
From: North of NW 154 Street  
To: South of NW 25 Street

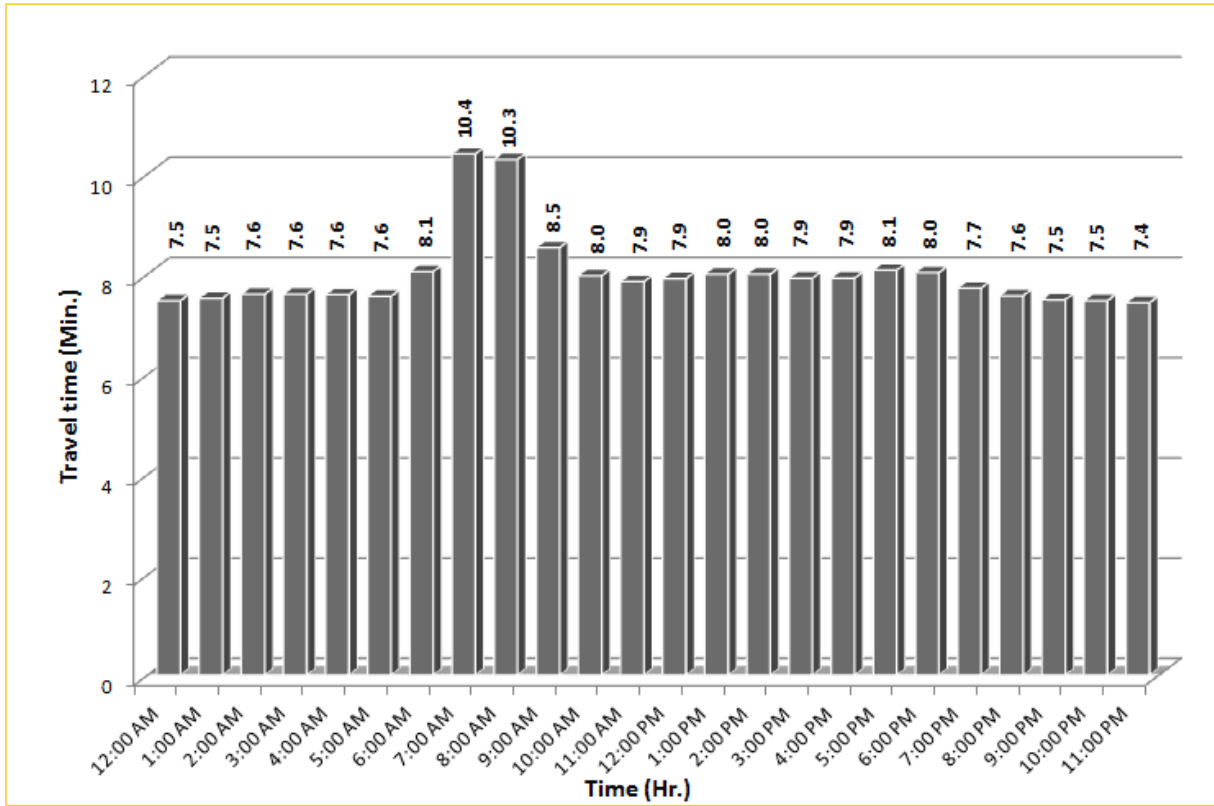


\* Twelve-month average from August 1<sup>st</sup>, 2013 to July 31<sup>st</sup>, 2014.

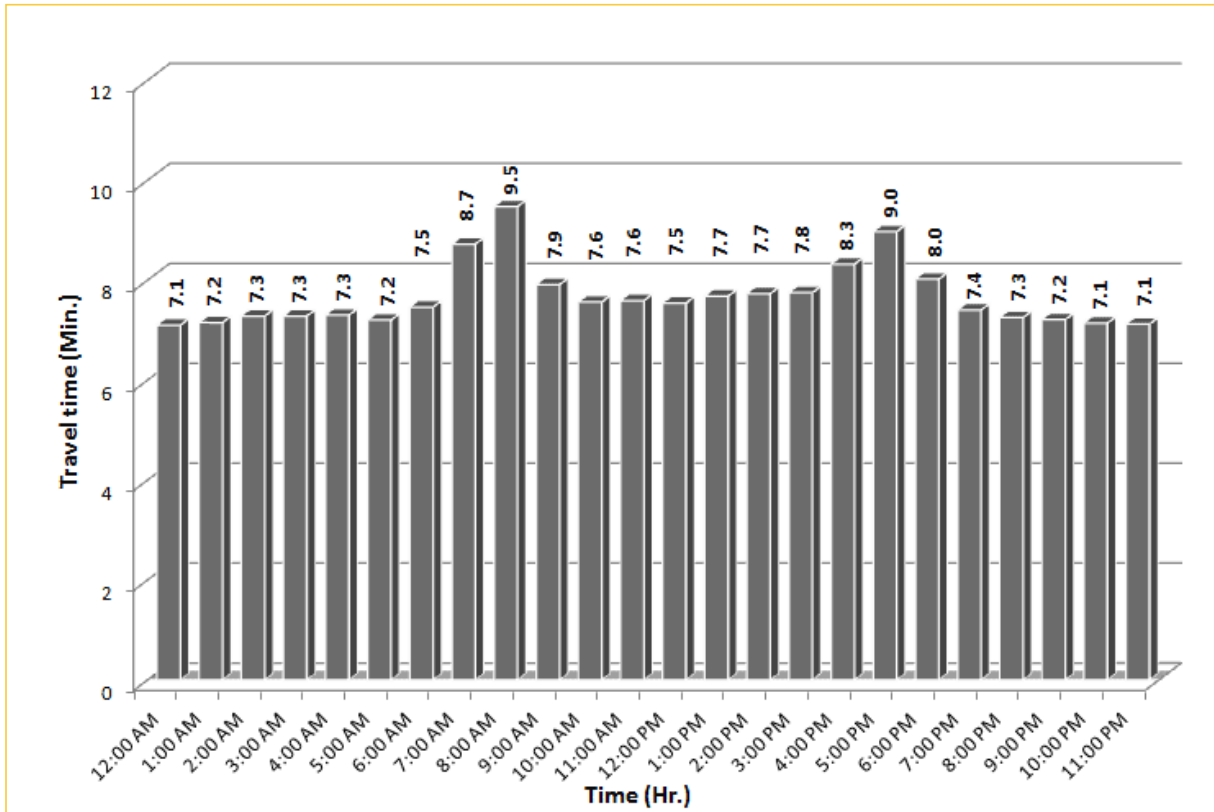
## TRAVEL TIME RELIABILITY REPORT

### Weekdays Travel Times by Time of Day\*

SR 826 Eastbound: 7.1 Miles  
From: West of NW 67 Avenue  
To: East of NW 12 Avenue



SR 826 Westbound: 7.1 Miles  
From: East of NW 12 Avenue  
To: West of NW 67 Avenue

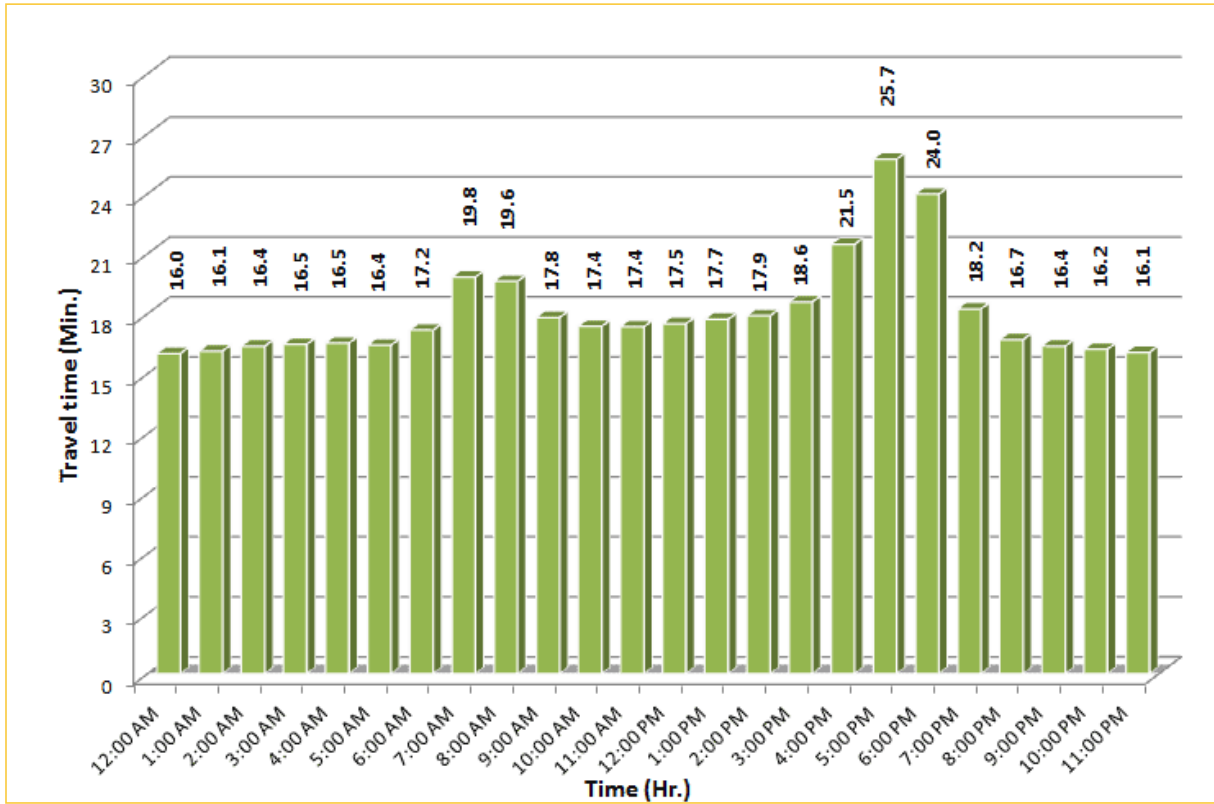


\* Twelve-month average from August 1<sup>st</sup>, 2013 to July 31<sup>st</sup>, 2014.

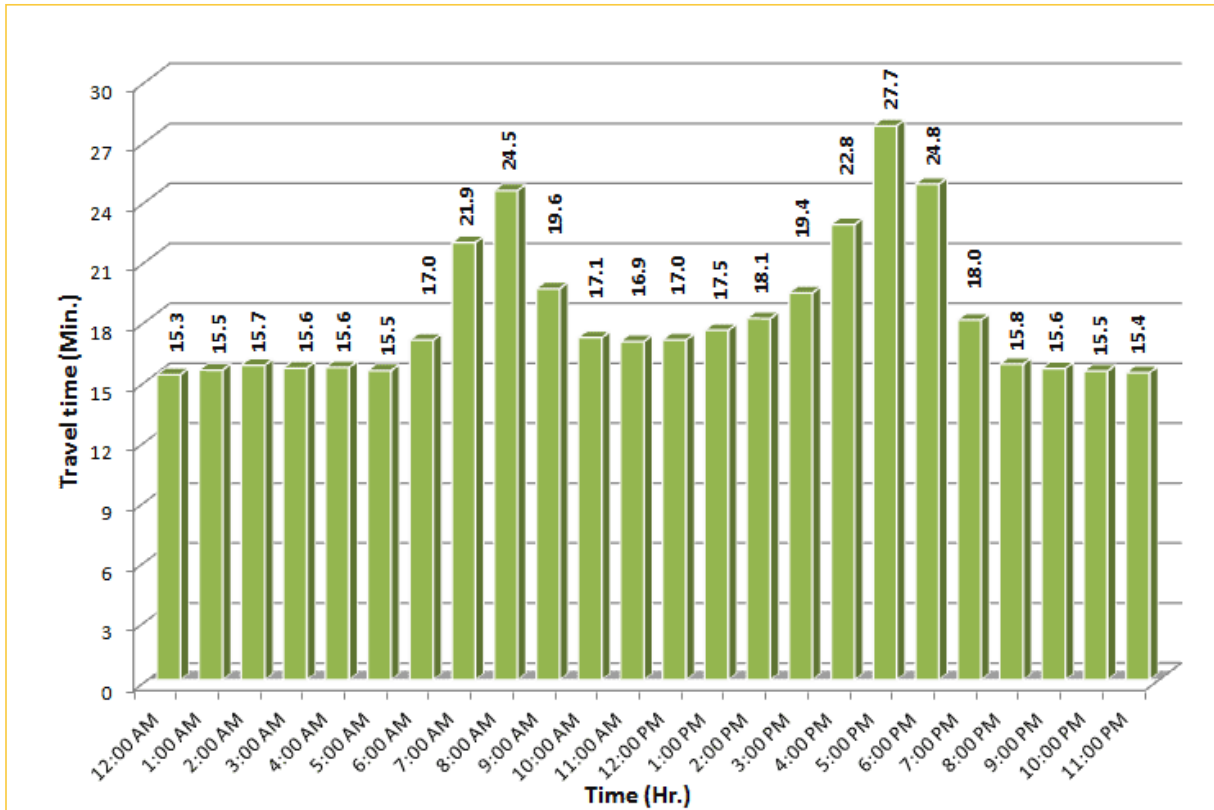
## TRAVEL TIME RELIABILITY REPORT

### Weekdays Travel Times by Time of Day\*

SR 826 Northbound/Eastbound : 15.6 Miles  
From: South of NW 25 Street  
To: East of NW 12 Avenue

SR 826 Southbound/Westbound: 15.6 Miles  
From: East of NW 12 Avenue  
To: South of NW 25 Street

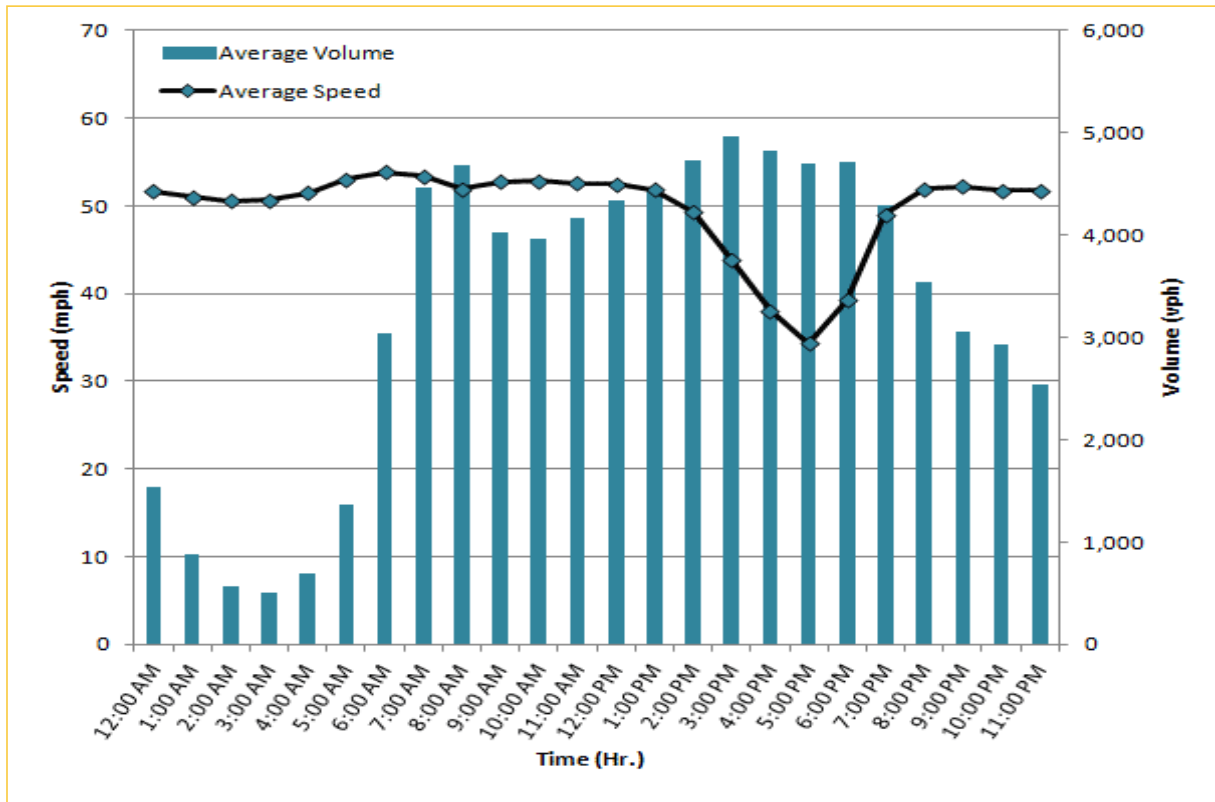



\* Twelve-month average from August 1<sup>st</sup>, 2013 to July 31<sup>st</sup>, 2014.

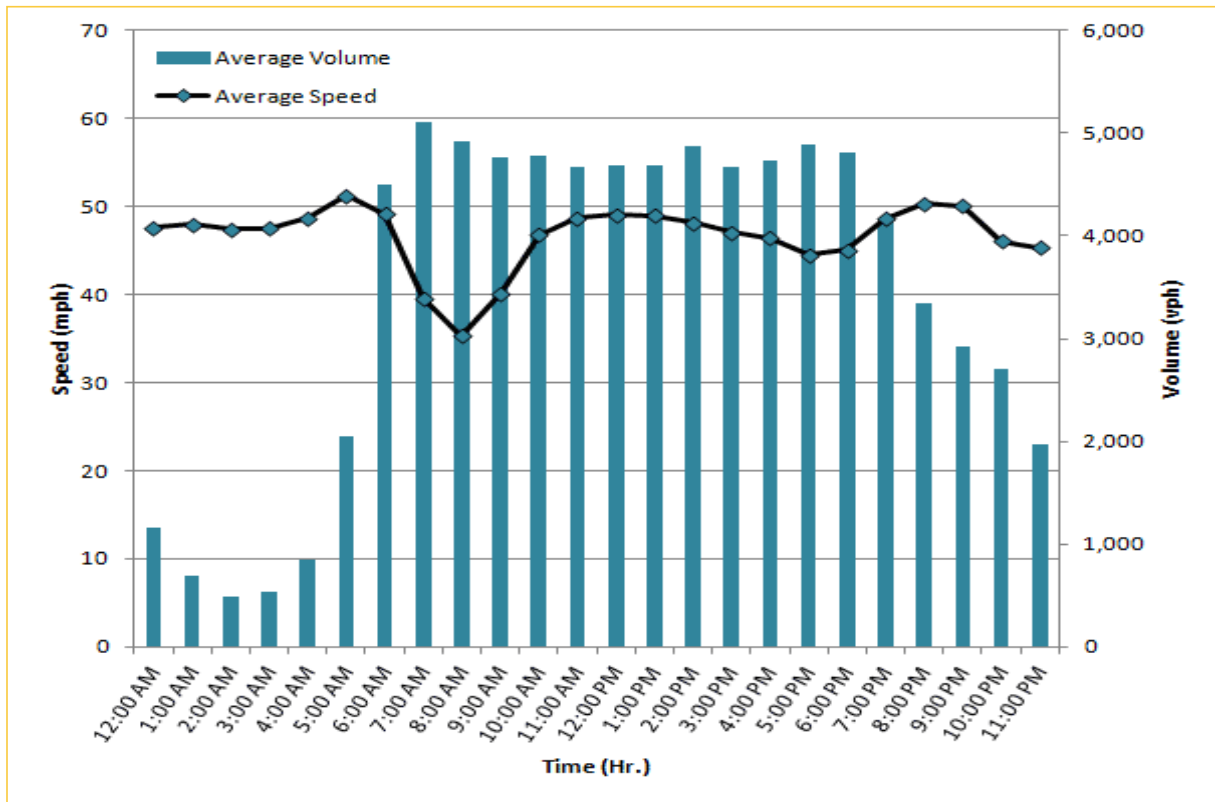
# TRAVEL TIME RELIABILITY REPORT

## Weekdays Speeds and Volumes by Time of Day\*

**I-95 Northbound: 17.3 Miles**  
From: US-1  
To: Miami-Dade / Broward County Line

**I-95 Southbound: 17.3 Miles**  
From: Miami-Dade / Broward County Line  
To: US-1

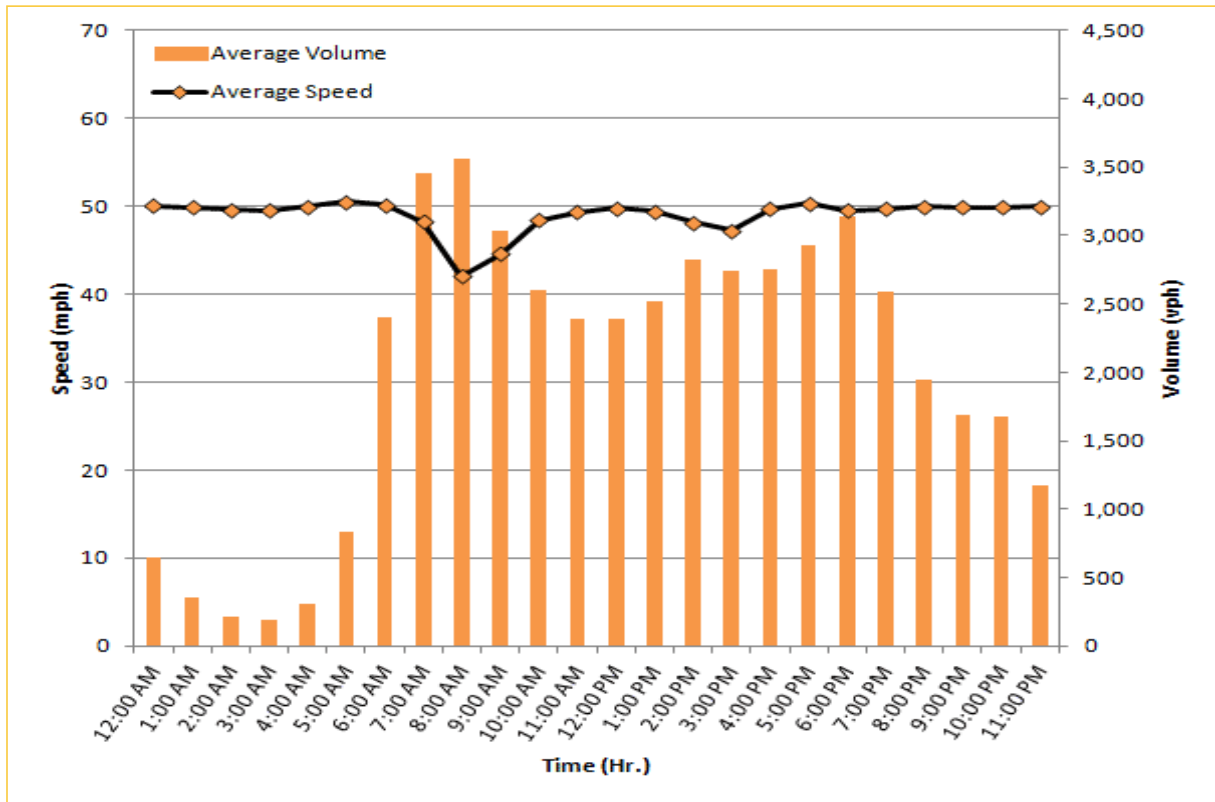
\* Twelve-month average from August 1<sup>st</sup>, 2013 to July 31<sup>st</sup>, 2014. Excludes express lanes.



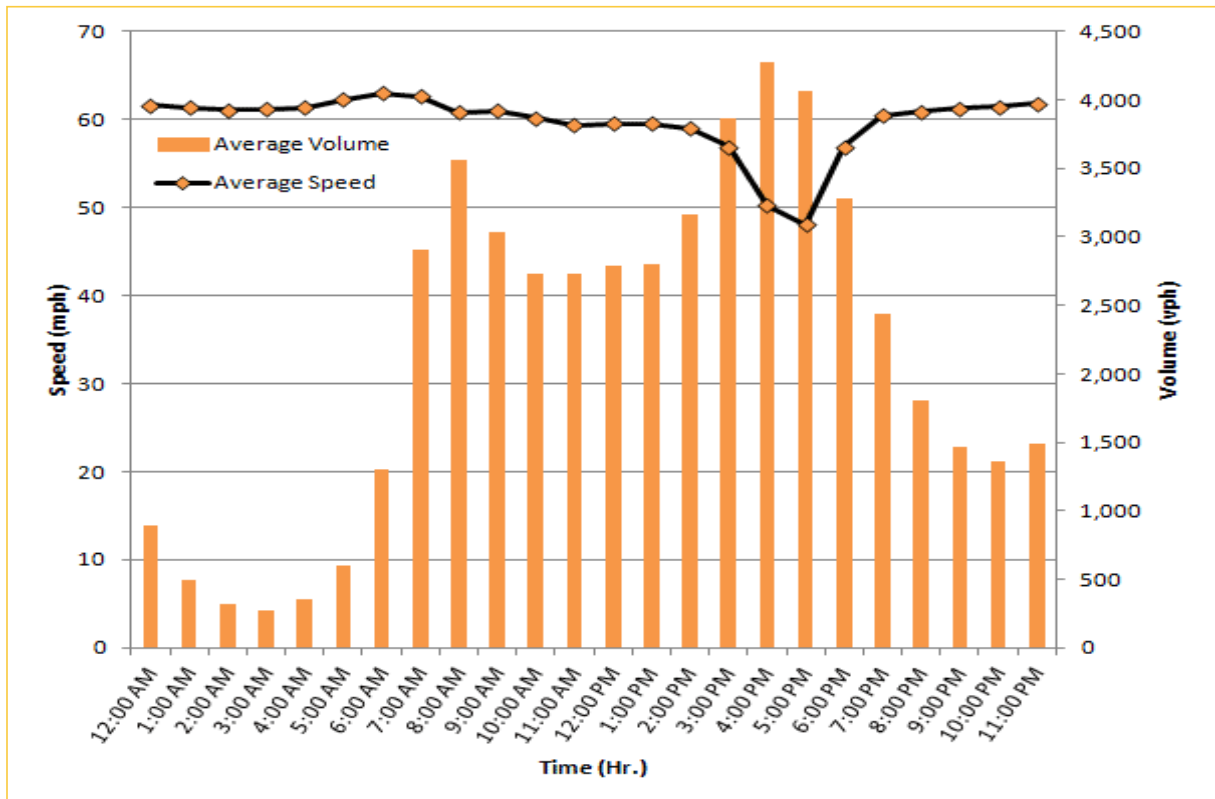
# TRAVEL TIME RELIABILITY REPORT

## Weekdays Speeds and Volumes by Time of Day\*

**I-195 Eastbound: 4.9 Miles**  
From: West of North Miami Avenue  
To: West of Alton Road



**I-195 Westbound: 4.9 Miles**  
From: West of Alton Road  
To: West of North Miami Avenue

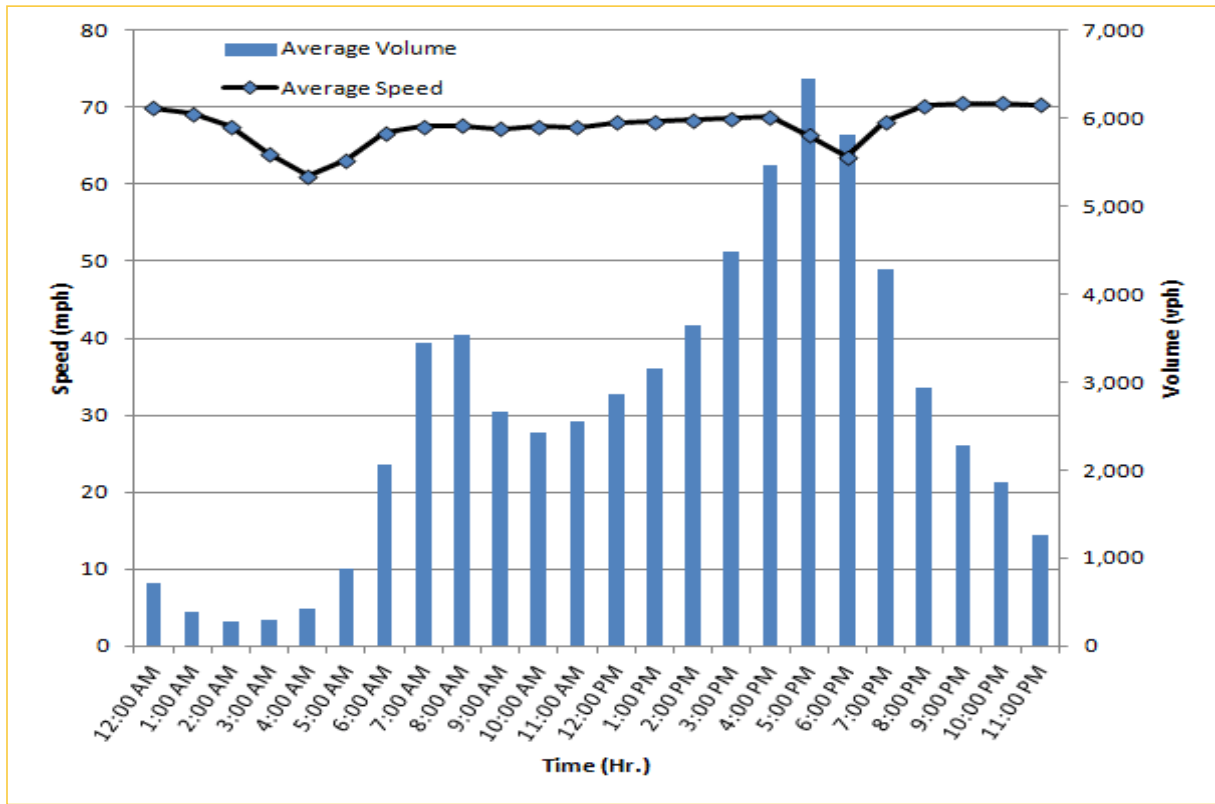


\* Twelve-month average from August 1<sup>st</sup>, 2013 to July 31<sup>st</sup>, 2014.

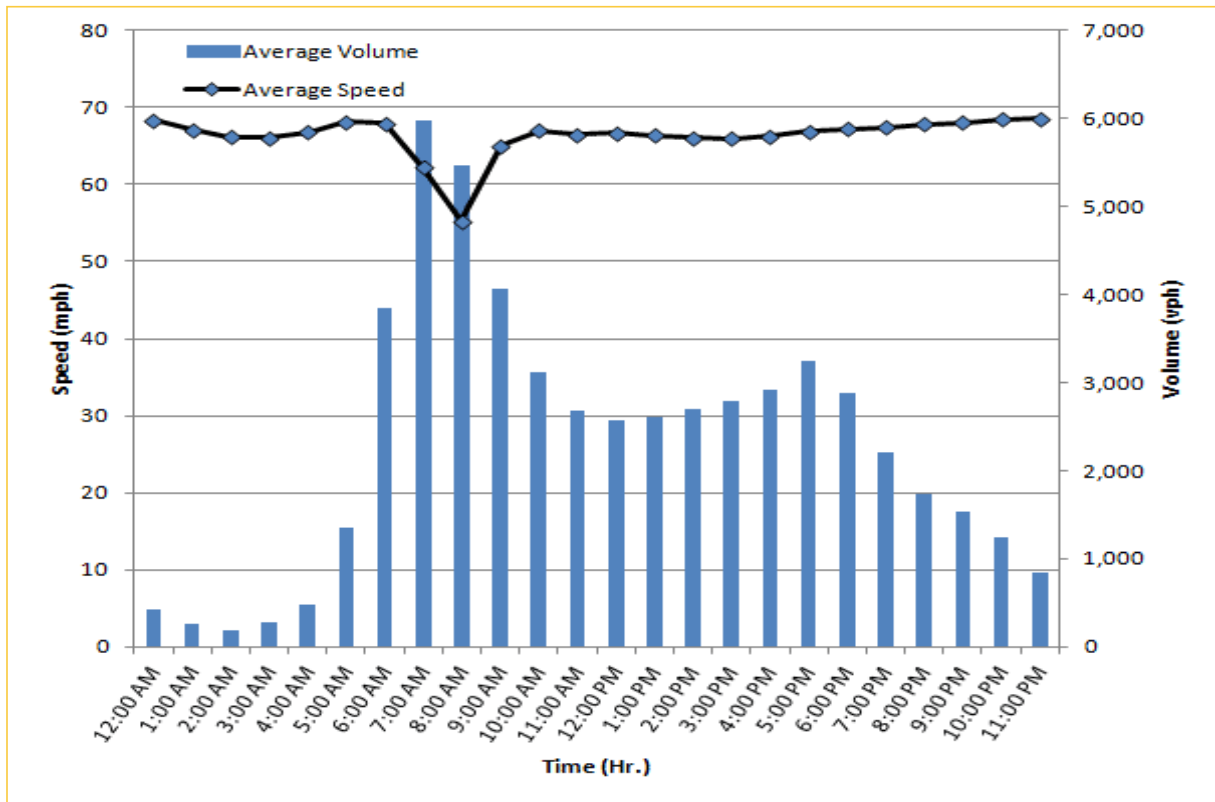
# TRAVEL TIME RELIABILITY REPORT

## Weekdays Speeds and Volumes by Time of Day\*

**I-75 Northbound: 5.4 Miles**  
From: West of SR 826  
To: North of Florida's Turnpike



**I-75 Southbound: 5.4 Miles**  
From: North of Florida's Turnpike  
To: West of SR 826

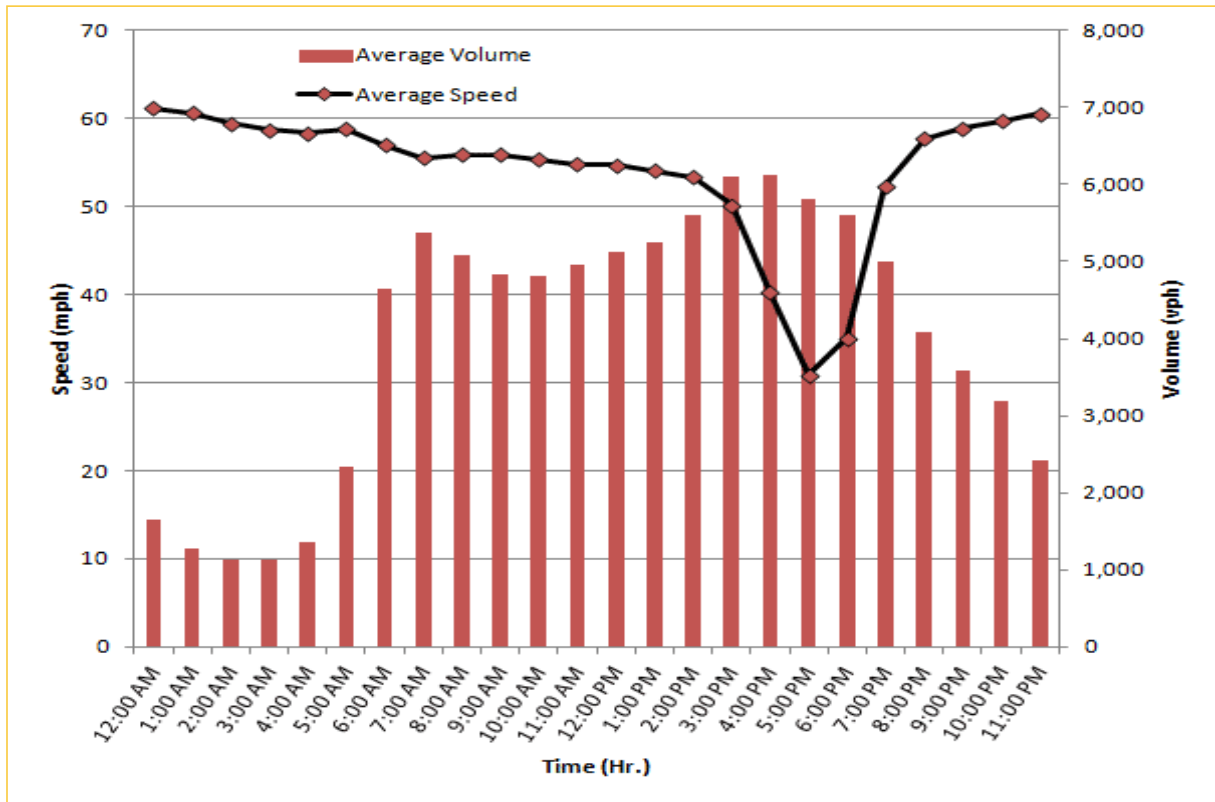


\* Twelve-month average from August 1<sup>st</sup>, 2013 to July 31<sup>st</sup>, 2014.

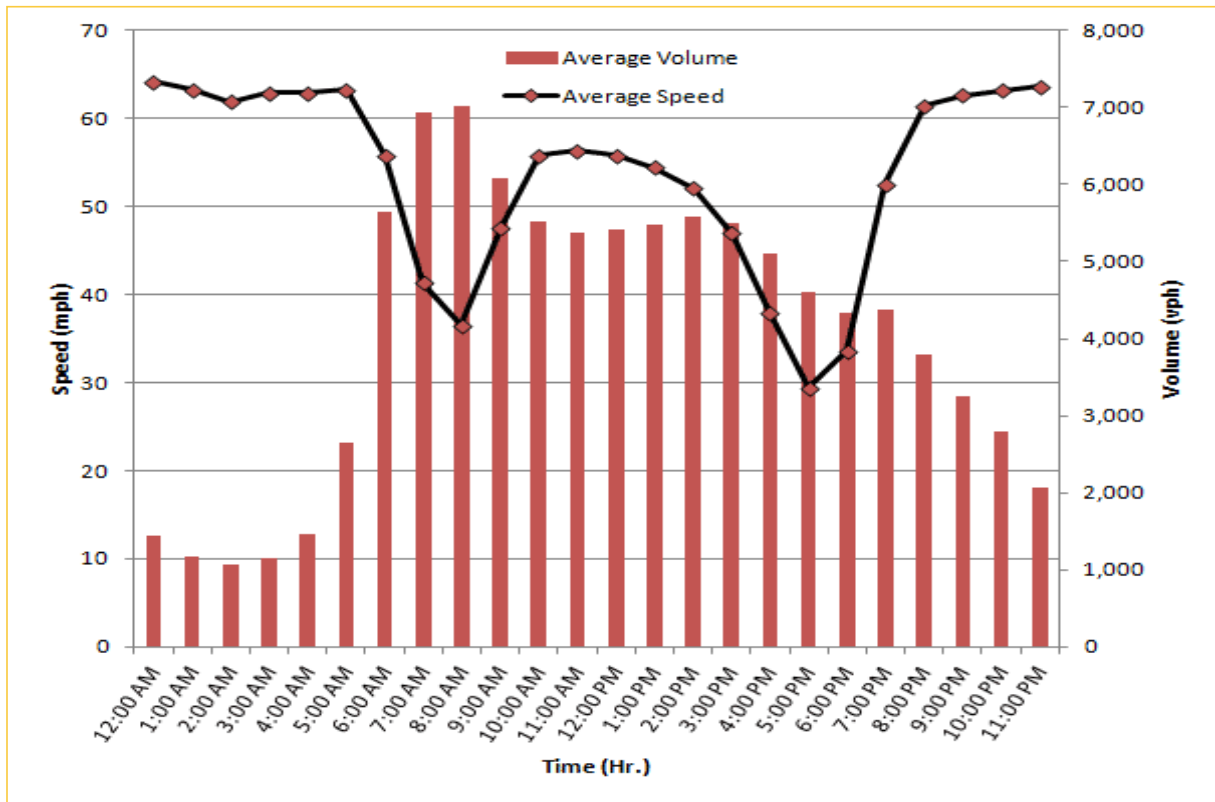
# TRAVEL TIME RELIABILITY REPORT

## Weekdays Speeds and Volumes by Time of Day\*

**SR 826 Northbound: 8.4 Miles**  
From: South of NW 25 Street  
To: North of NW 154 Street



**SR 826 Southbound: 8.4 Miles**  
From: North of NW 154 Street  
To: South of NW 25 Street

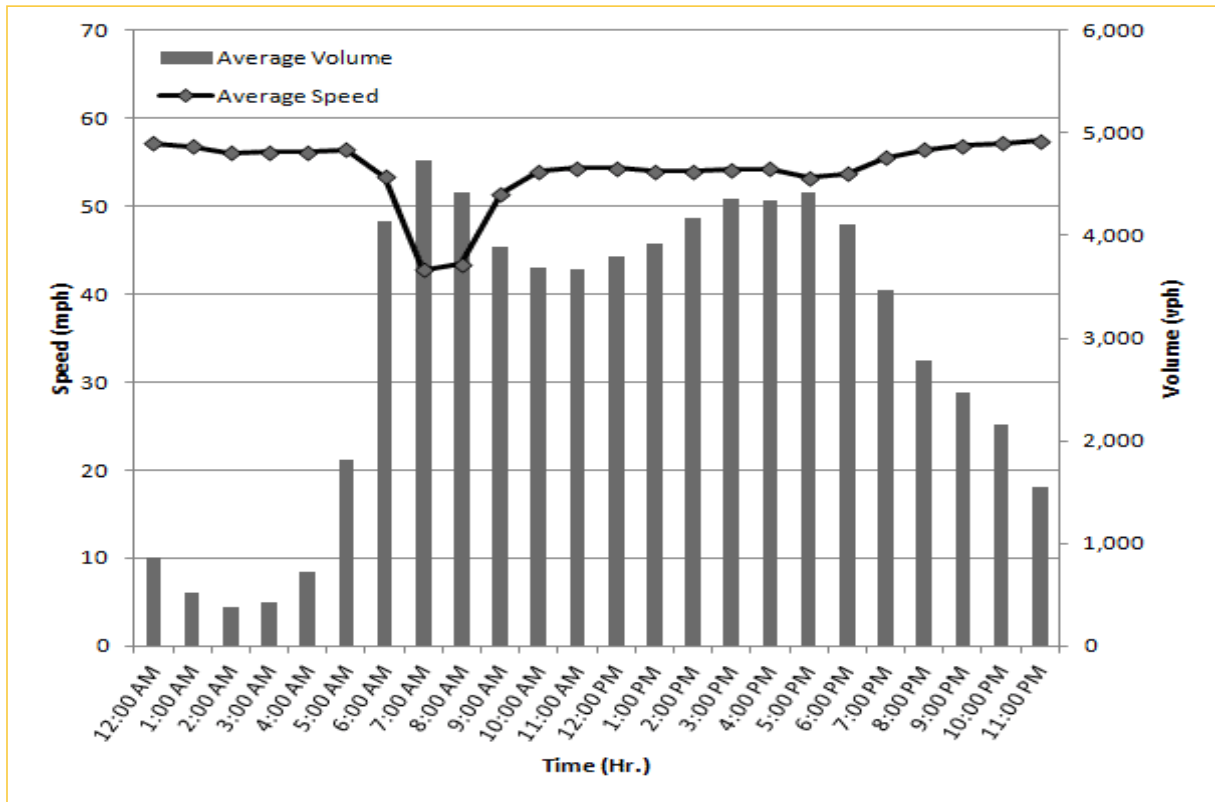


\* Twelve-month average from August 1<sup>st</sup>, 2013 to July 31<sup>st</sup>, 2014.

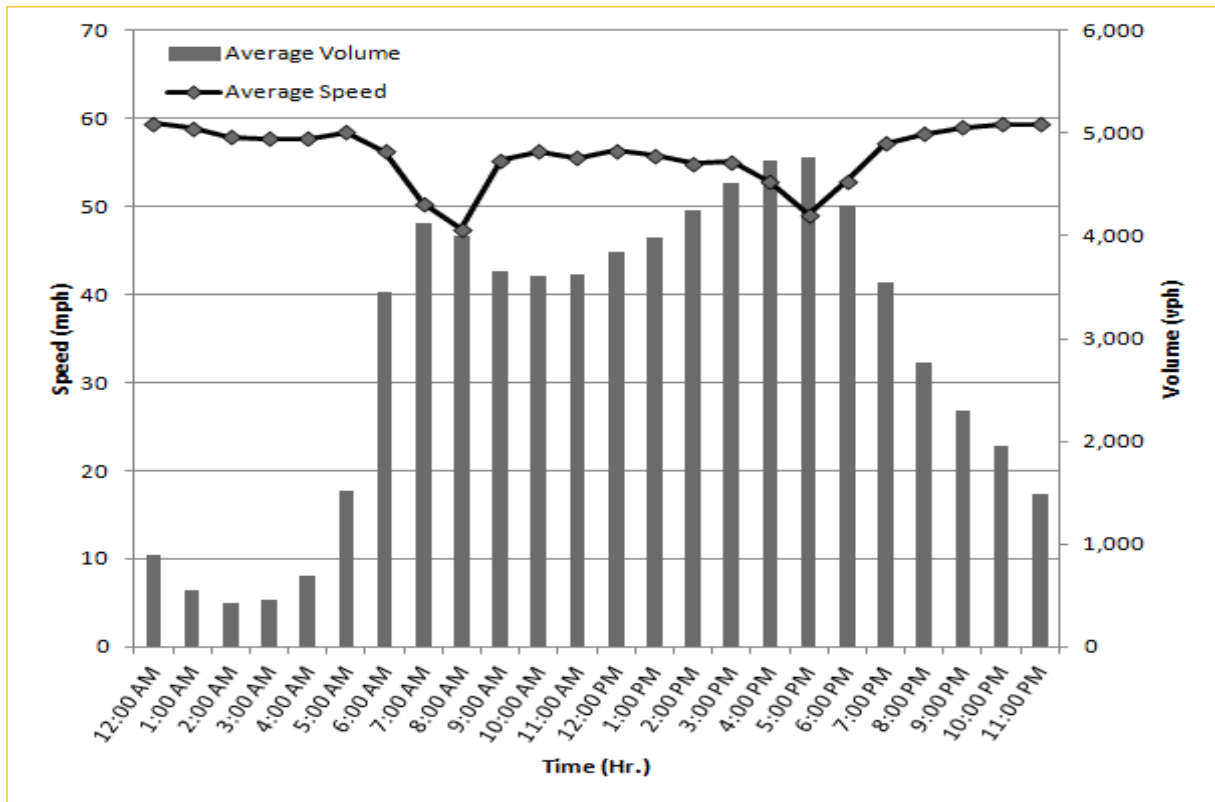
# TRAVEL TIME RELIABILITY REPORT

## Weekdays Speeds and Volumes by Time of Day\*

SR 826 Eastbound: 7.1 Miles  
From: West of NW 67 Avenue  
To: East of NW 12 Avenue



SR 826 Westbound: 7.1 Miles  
From: East of NW 12 Avenue  
To: West of NW 67 Avenue

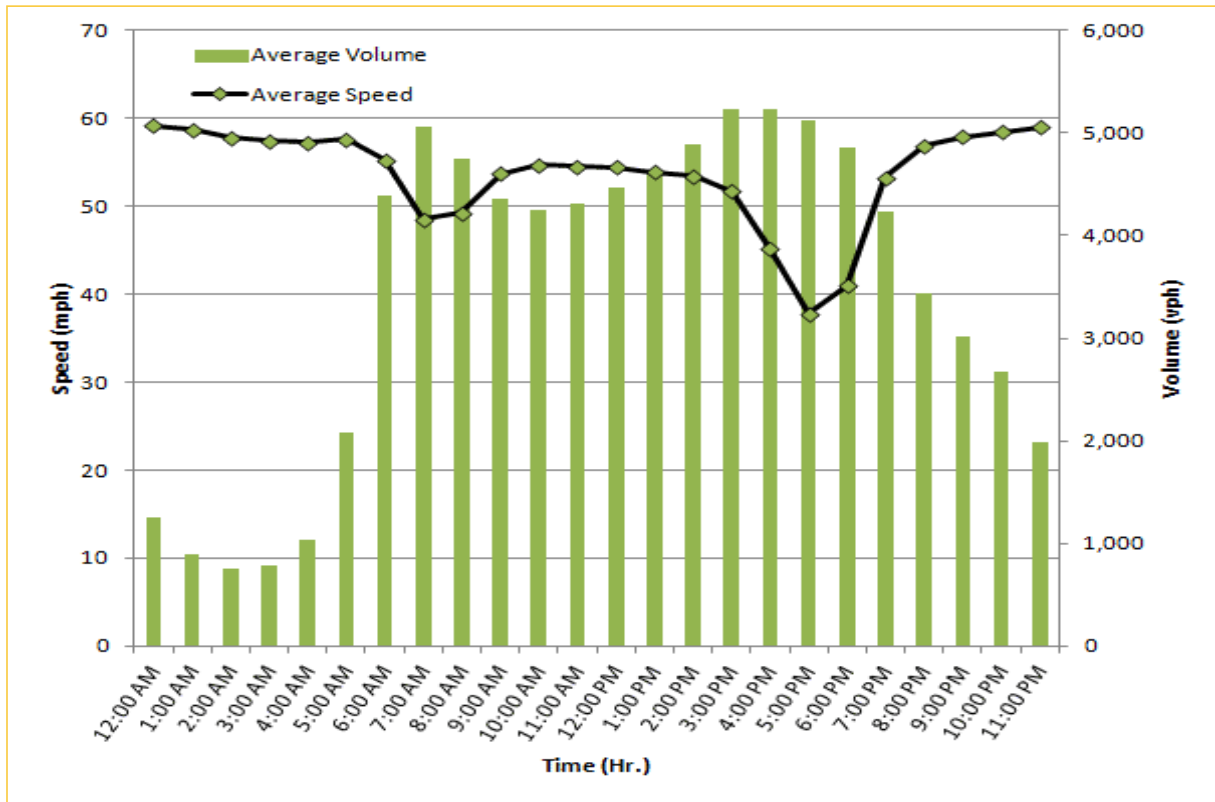


\* Twelve-month average from August 1<sup>st</sup>, 2013 to July 31<sup>st</sup>, 2014.

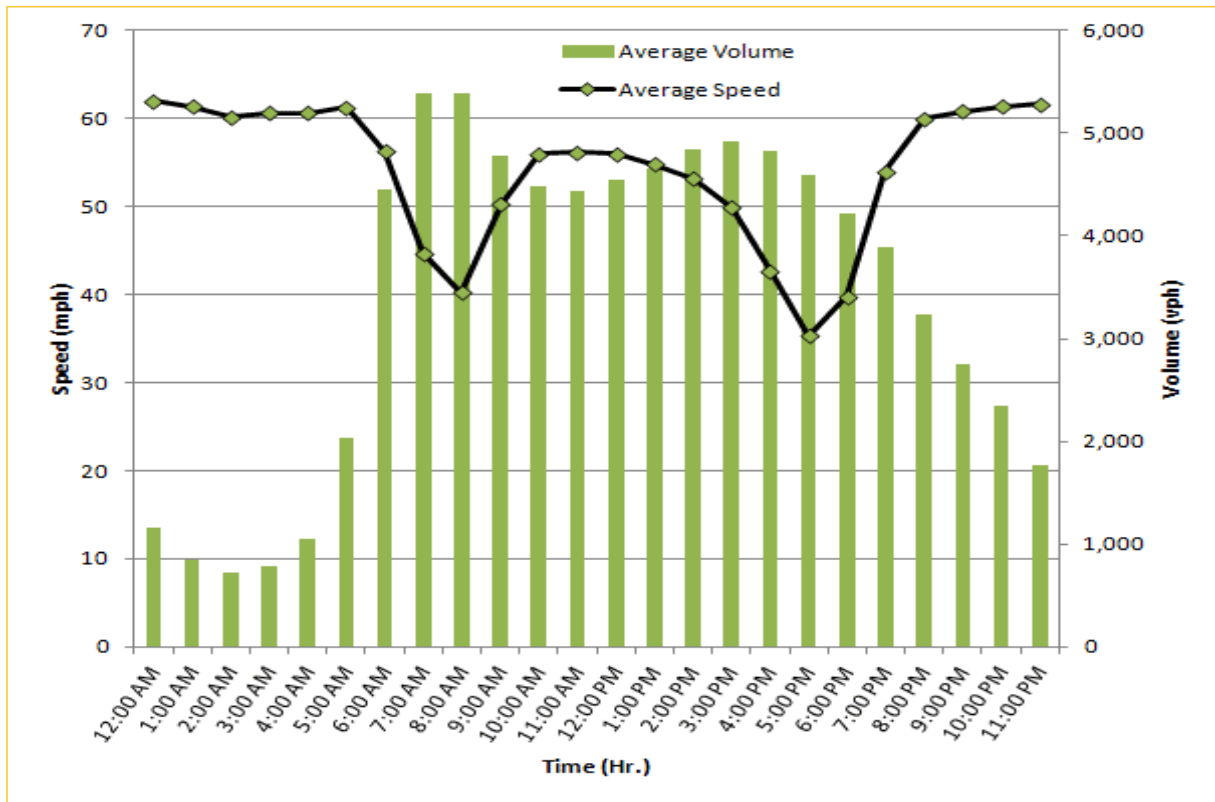
# TRAVEL TIME RELIABILITY REPORT

## Weekdays Speeds and Volumes by Time of Day\*

SR 826 Northbound/Eastbound : 15.6 Miles  
From: South of NW 25 Street  
To: East of NW 12 Avenue

SR 826 Southbound/Westbound: 15.6 Miles  
From: East of NW 12 Avenue  
To: South of NW 25 Street

\* Twelve-month average from August 1<sup>st</sup>, 2013 to July 31<sup>st</sup>, 2014.