

TRAVEL TIME RELIABILITY REPORT

Travel Time Index by Roadway*

Time	I-95		I-195		I-75		SR 826					
	NB	SB	EB	WB	NB	SB	NB	EB	NB/EB	SB	WB	SB/WB
0:00	1.16	1.27	1.16	1.01	0.94	0.97	1.00	1.00	1.00	0.98	0.99	0.98
1:00	1.18	1.27	1.16	1.01	0.95	0.98	1.01	1.01	1.01	1.00	0.99	1.00
2:00	1.20	1.29	1.17	1.02	0.97	1.00	1.02	1.02	1.02	1.02	1.01	1.02
3:00	1.19	1.30	1.17	1.01	1.03	1.00	1.04	1.02	1.03	1.00	1.01	1.01
4:00	1.16	1.25	1.16	1.01	1.08	0.99	1.04	1.02	1.03	1.00	1.02	1.01
5:00	1.12	1.17	1.15	0.99	1.04	0.97	1.04	1.01	1.02	1.00	1.00	1.00
6:00	1.10	1.22	1.16	0.98	0.99	0.97	1.07	1.08	1.07	1.15	1.04	1.10
7:00	1.12	1.58	1.20	0.99	0.97	1.08	1.10	1.39	1.24	1.58	1.21	1.41
8:00	1.17	1.79	1.44	1.03	0.98	1.26	1.11	1.38	1.22	1.82	1.31	1.58
9:00	1.14	1.57	1.37	1.02	0.98	1.04	1.09	1.14	1.11	1.41	1.10	1.26
10:00	1.13	1.31	1.22	1.03	0.97	0.99	1.10	1.07	1.08	1.16	1.05	1.11
11:00	1.14	1.24	1.18	1.04	0.97	0.99	1.11	1.05	1.08	1.13	1.06	1.09
12:00	1.13	1.23	1.17	1.04	0.97	0.99	1.12	1.06	1.09	1.14	1.05	1.10
13:00	1.14	1.23	1.18	1.04	0.97	0.99	1.14	1.07	1.10	1.18	1.07	1.13
14:00	1.22	1.24	1.23	1.05	0.96	1.00	1.16	1.07	1.11	1.24	1.07	1.16
15:00	1.38	1.27	1.26	1.10	0.96	1.00	1.24	1.06	1.15	1.39	1.07	1.24
16:00	1.59	1.30	1.17	1.30	0.96	0.99	1.58	1.06	1.33	1.74	1.14	1.46
17:00	1.79	1.36	1.15	1.38	1.01	0.98	2.06	1.08	1.59	2.28	1.25	1.79
18:00	1.59	1.35	1.18	1.12	1.10	0.98	1.86	1.07	1.48	2.02	1.11	1.59
19:00	1.25	1.24	1.18	1.03	1.00	0.98	1.21	1.03	1.13	1.26	1.03	1.16
20:00	1.15	1.19	1.17	1.03	0.94	0.97	1.06	1.01	1.04	1.03	1.01	1.02
21:00	1.14	1.20	1.17	1.02	0.93	0.97	1.04	1.00	1.02	1.01	1.00	1.00
22:00	1.16	1.32	1.17	1.01	0.93	0.96	1.02	1.00	1.01	1.00	0.99	1.00
23:00	1.16	1.35	1.17	1.00	0.94	0.96	1.01	1.00	1.00	0.99	0.99	0.99
FFS**	59 mph	59 mph	58 mph	62 mph	66 mph	66 mph	61 mph	57 mph	59 mph	63 mph	59 mph	61 mph

*Maximum Travel Time Index. ** FFS: Free Flow Speed*

Travel Time Index (TTI) is a measure of average conditions that indicates how much longer, **on average**, travel times are during congestion compared to during light traffic.

Real World Example: A TTI of 1.60 means that for a trip that usually takes 10 minutes in light traffic, a traveler should budget for an additional 6 minutes **on average**.

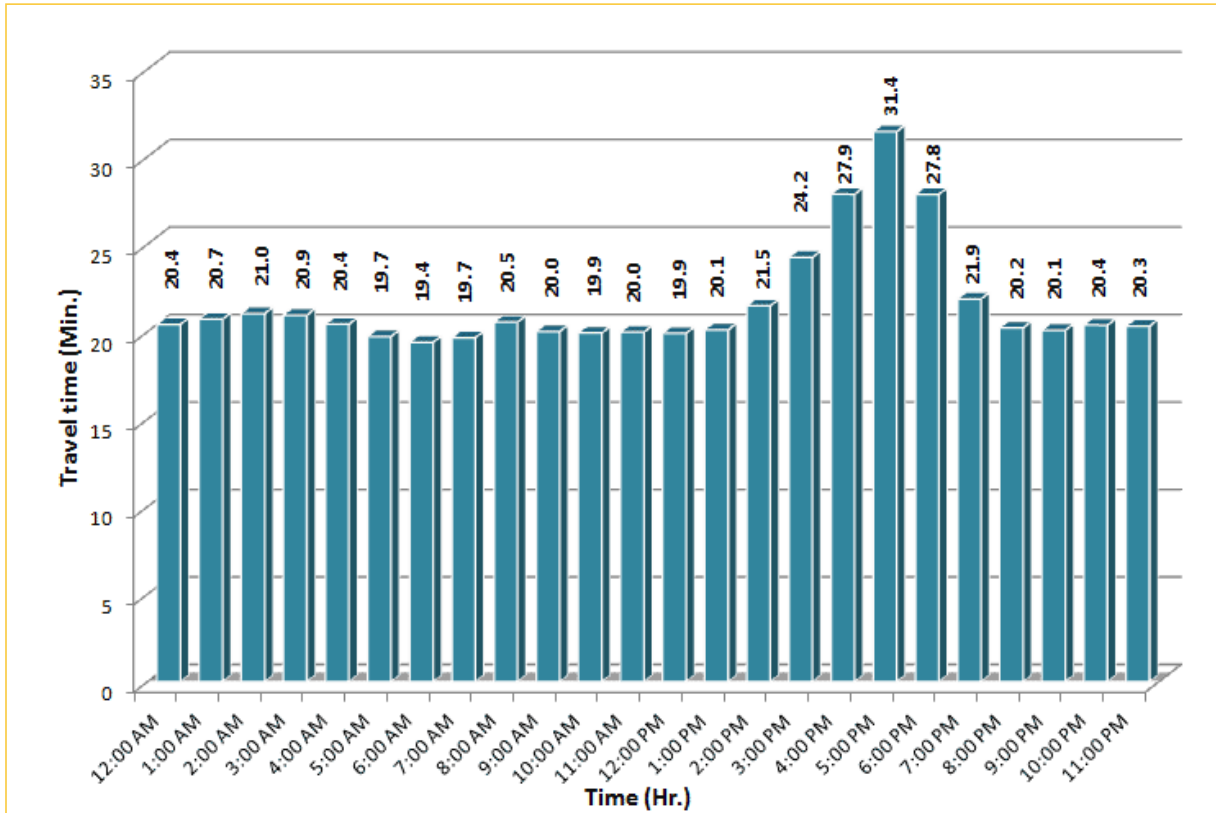


* Twelve-month average from July 1st, 2013 to June 30th, 2014.

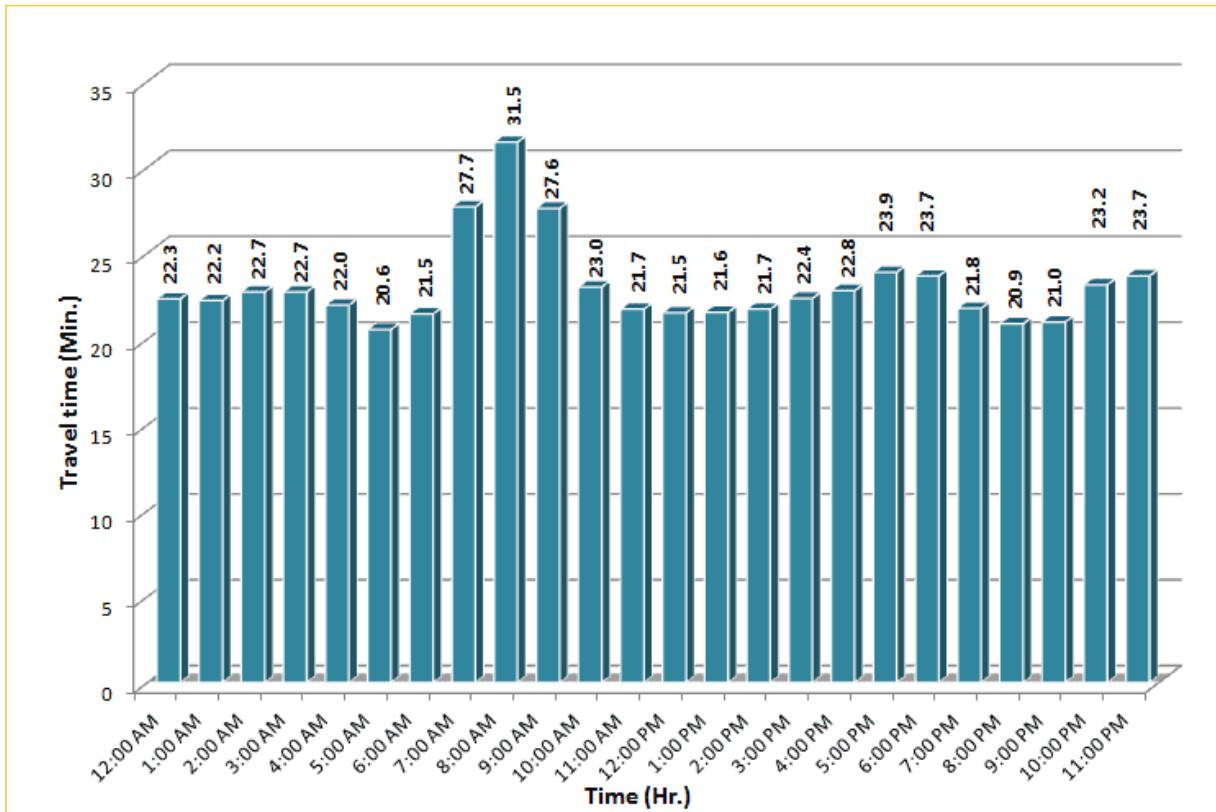
TRAVEL TIME RELIABILITY REPORT

Weekdays Travel Times by Time of Day*

I-95 Northbound: 17.3 Miles
From: US-1
To: Miami-Dade / Broward County Line

I-95 Southbound: 17.3 Miles
From: Miami-Dade / Broward County Line
To: US-1

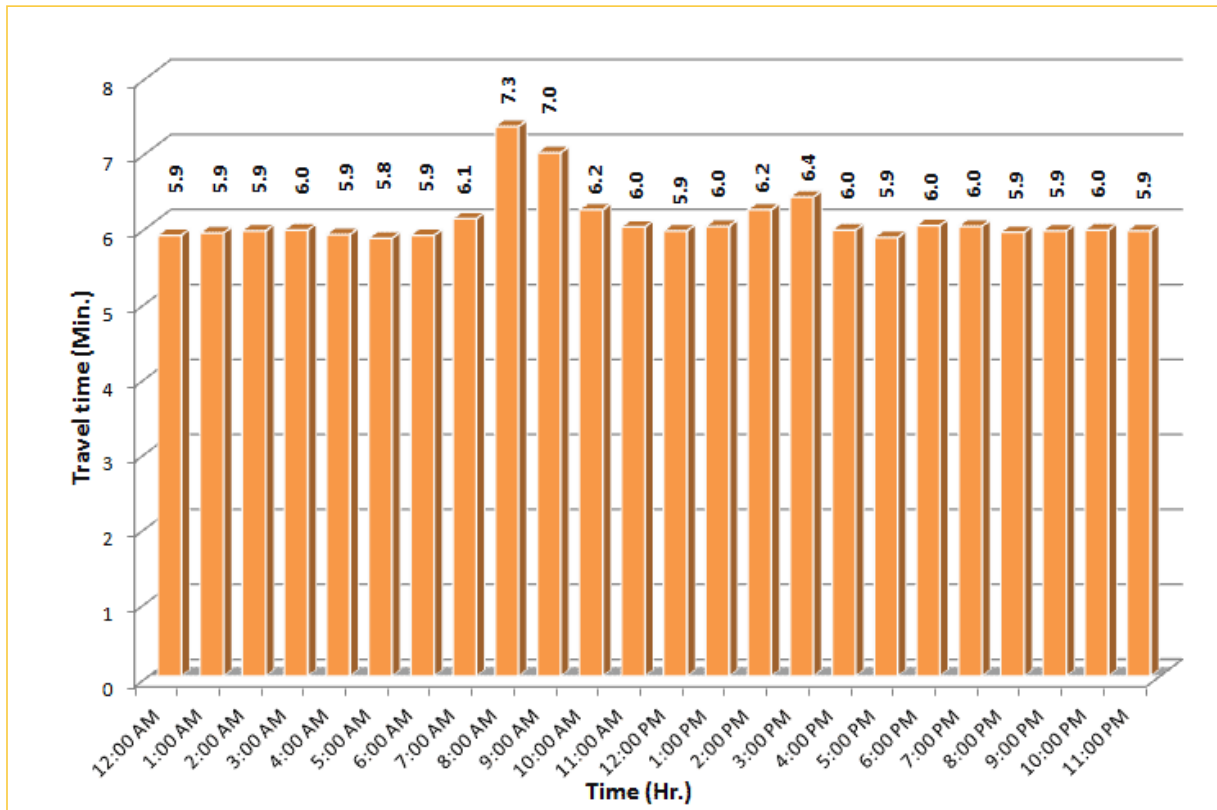



* Twelve-month average from July 1st, 2013 to June 30th, 2014. Excludes express lanes.

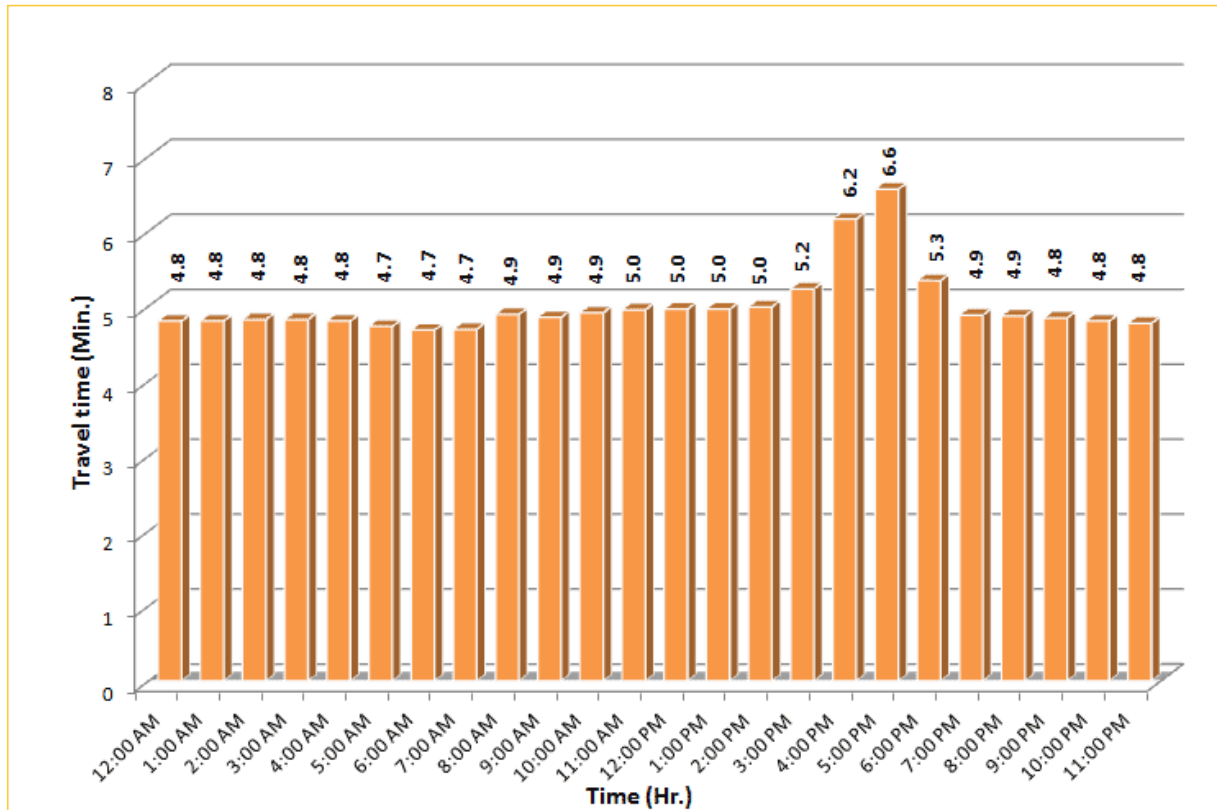
TRAVEL TIME RELIABILITY REPORT

Weekdays Travel Times by Time of Day*

I-195 Eastbound: 4.9 Miles
From: West of North Miami Avenue
To: West of Alton Road



I-195 Westbound: 4.9 Miles
From: West of Alton Road
To: West of North Miami Avenue


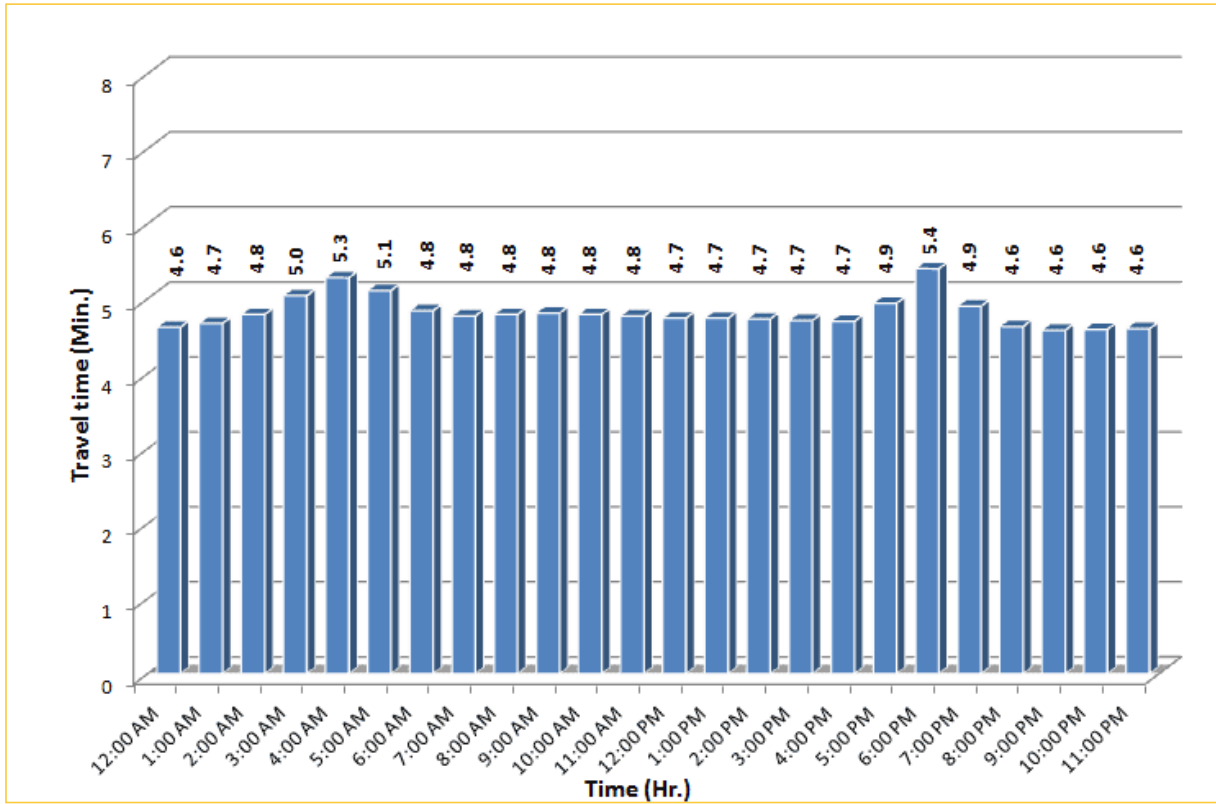


* Twelve-month average from July 1st, 2013 to June 30th, 2014.

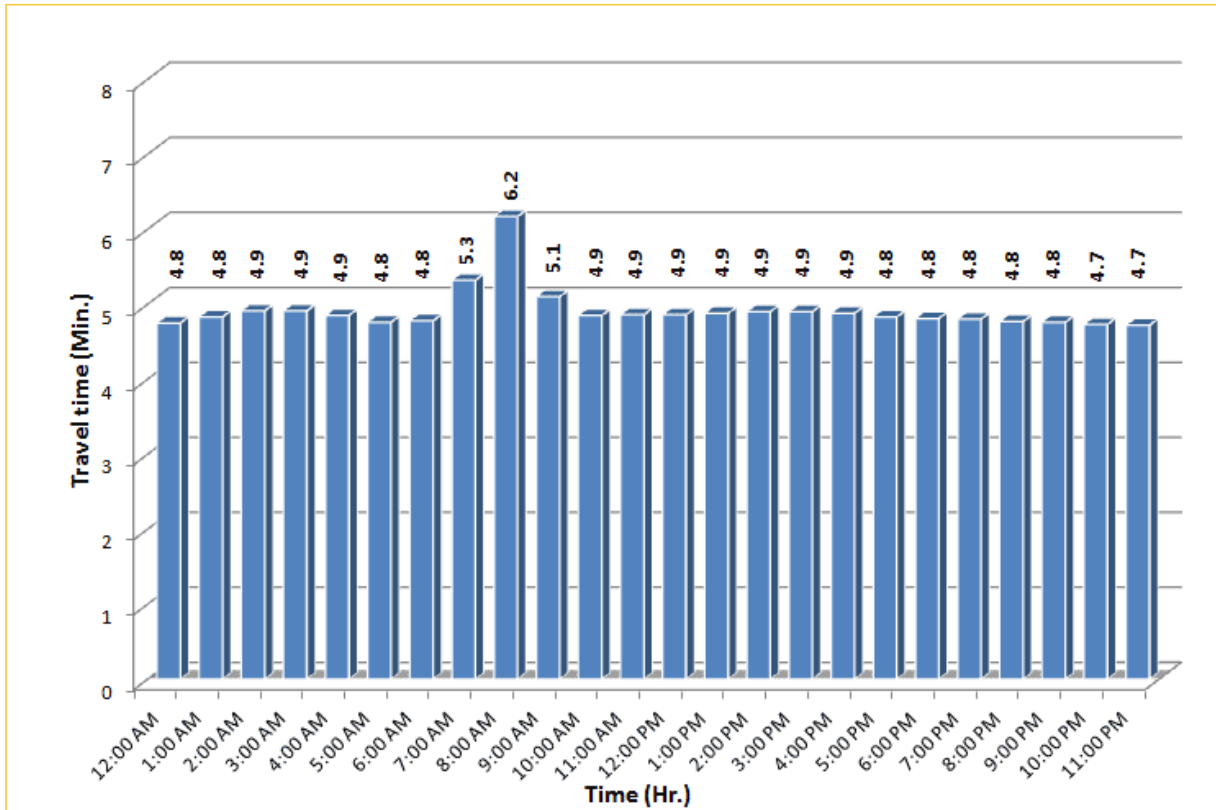
TRAVEL TIME RELIABILITY REPORT

Weekdays Travel Times by Time of Day*

I-75 Northbound: 5.4 Miles
From: West of SR 826
To: North of Florida's Turnpike

I-75 Southbound: 5.4 Miles
From: North of Florida's Turnpike
To: West of SR 826


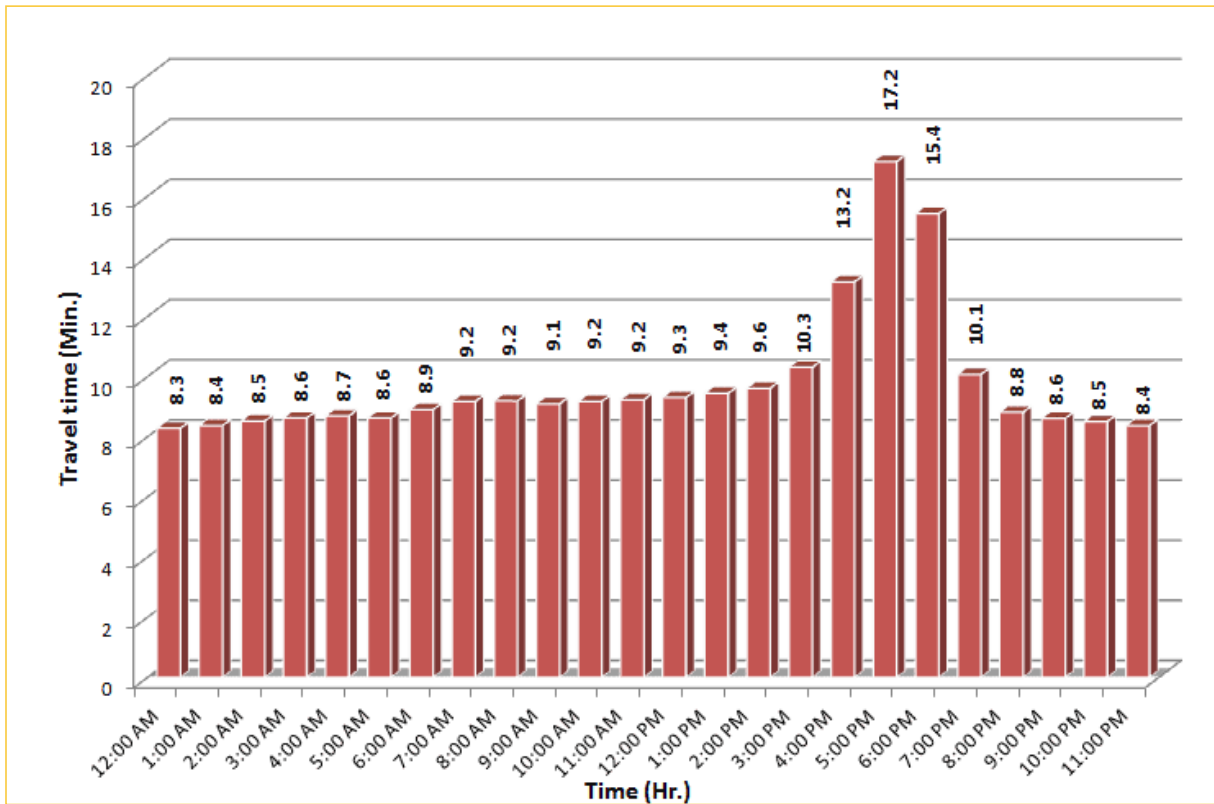



* Twelve-month average from July 1st, 2013 to June 30th, 2014.

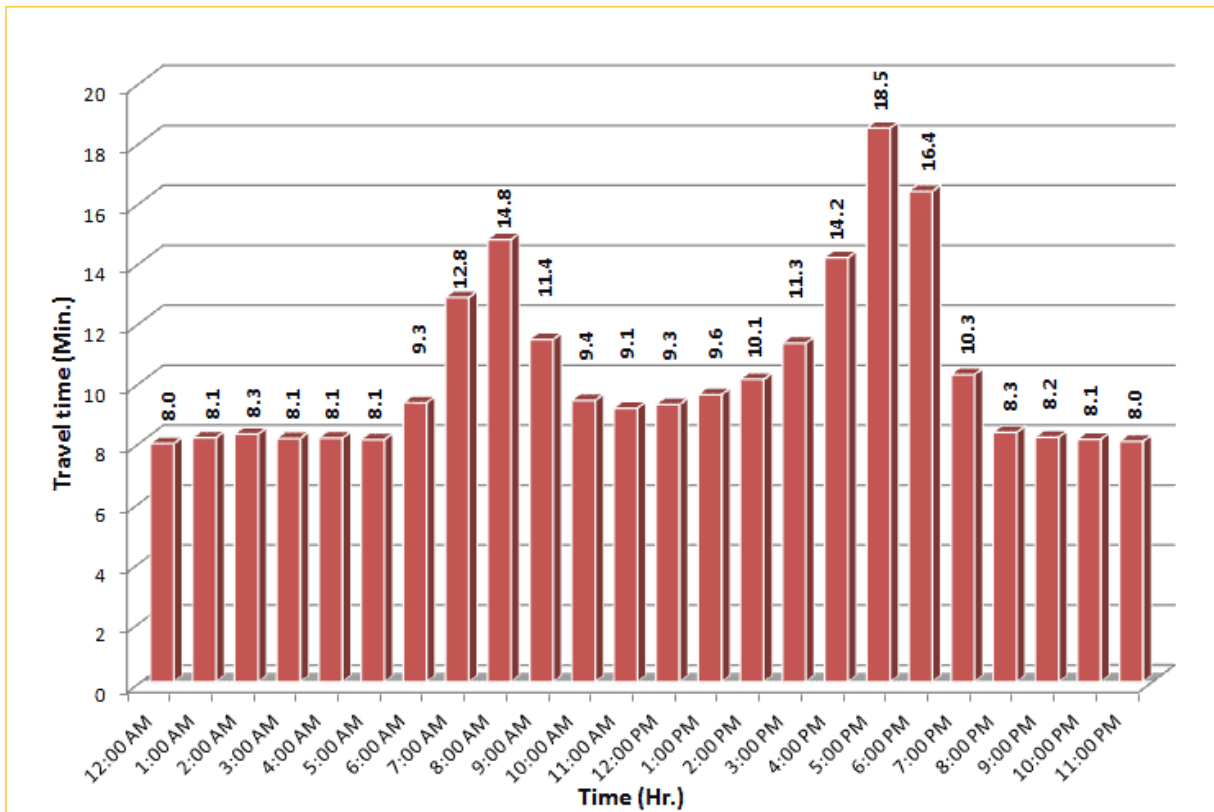
TRAVEL TIME RELIABILITY REPORT

Weekdays Travel Times by Time of Day*

SR 826 Northbound: 8.4 Miles
From: South of NW 25 Street
To: North of NW 154 Street

SR 826 Southbound: 8.4 Miles
From: North of NW 154 Street
To: South of NW 25 Street

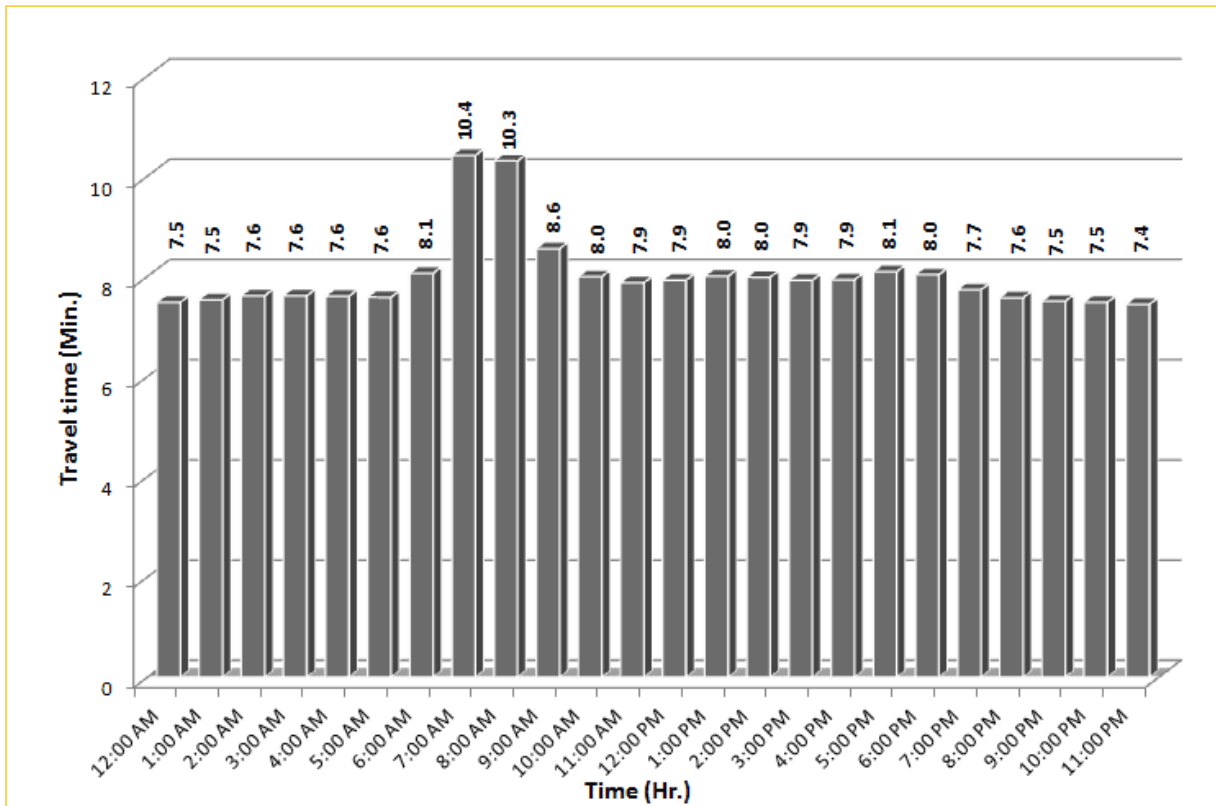



* Twelve-month average from July 1st, 2013 to June 30th, 2014.

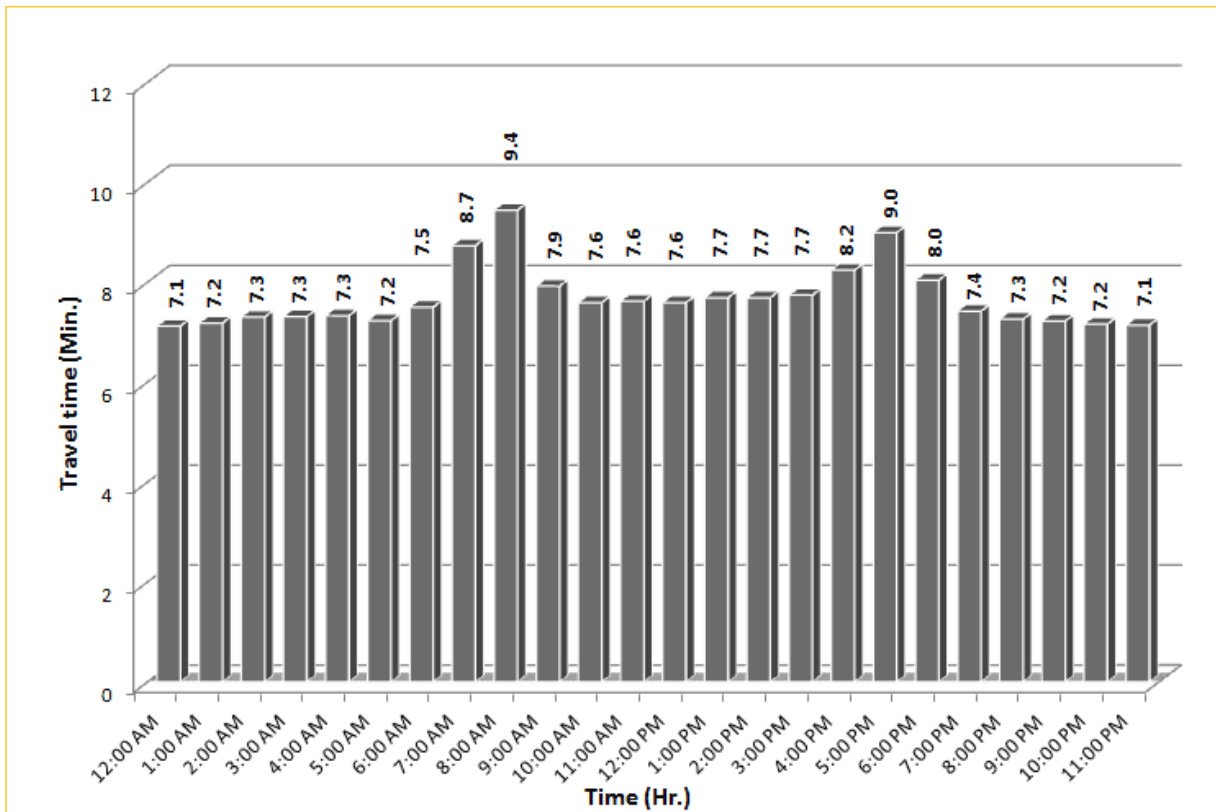
TRAVEL TIME RELIABILITY REPORT

Weekdays Travel Times by Time of Day*

SR 826 Eastbound: 7.1 Miles
From: West of NW 67 Avenue
To: East of NW 12 Avenue



SR 826 Westbound: 7.1 Miles
From: East of NW 12 Avenue
To: West of NW 67 Avenue

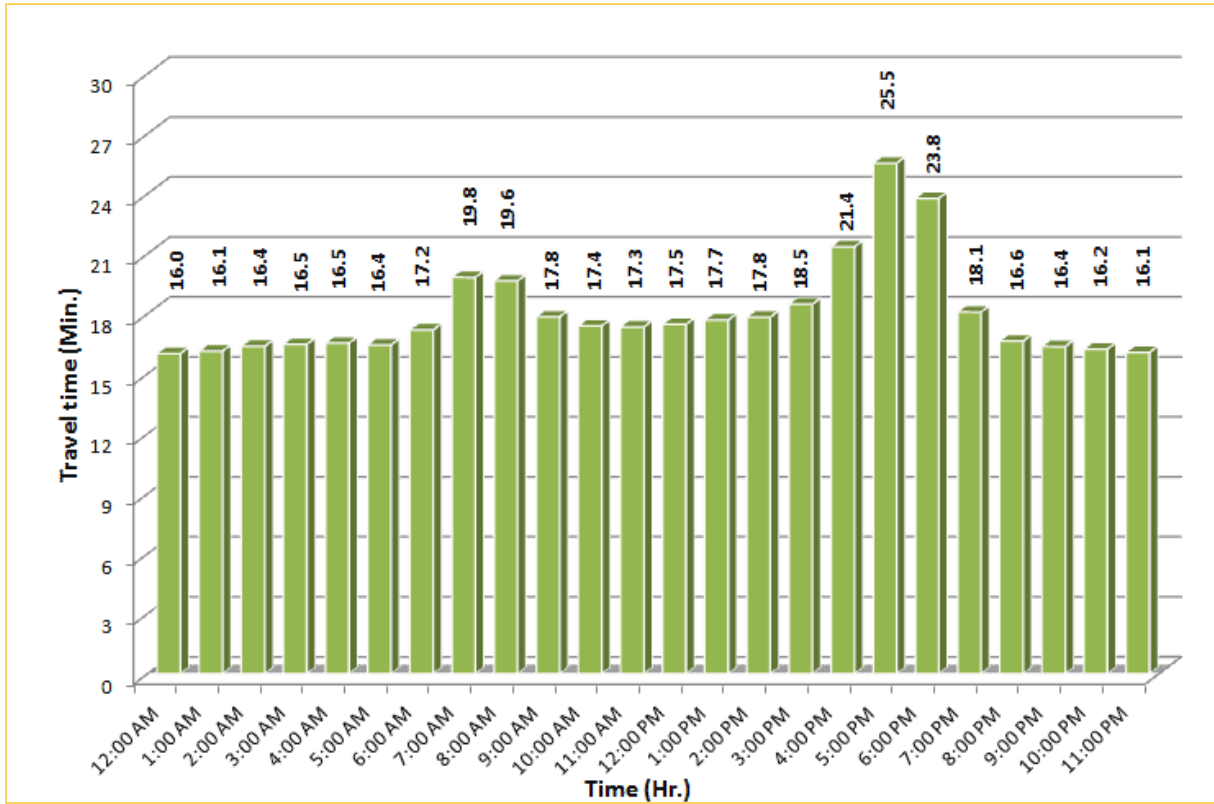


* Twelve-month average from July 1st, 2013 to June 30th, 2014.

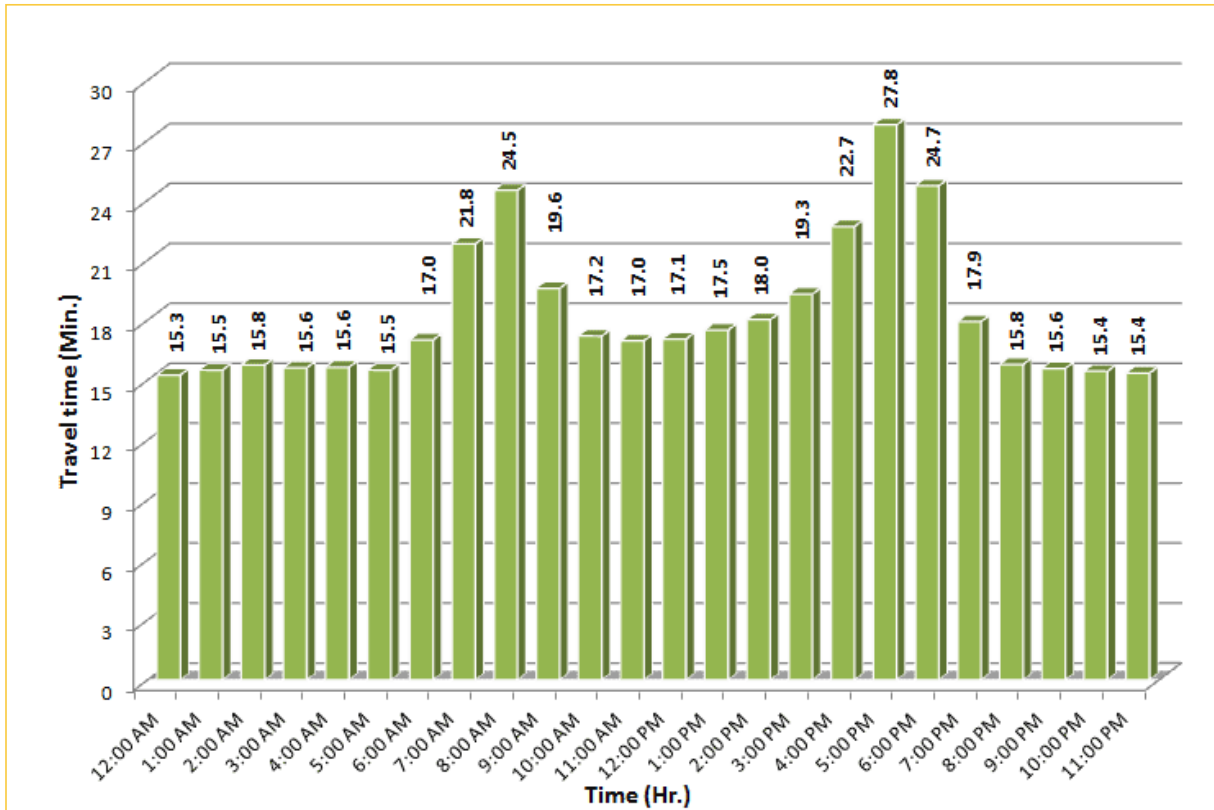
TRAVEL TIME RELIABILITY REPORT

Weekdays Travel Times by Time of Day*

SR 826 Northbound/Eastbound : 15.6 Miles
From: South of NW 25 Street
To: East of NW 12 Avenue

SR 826 Southbound/Westbound: 15.6 Miles
From: East of NW 12 Avenue
To: South of NW 25 Street

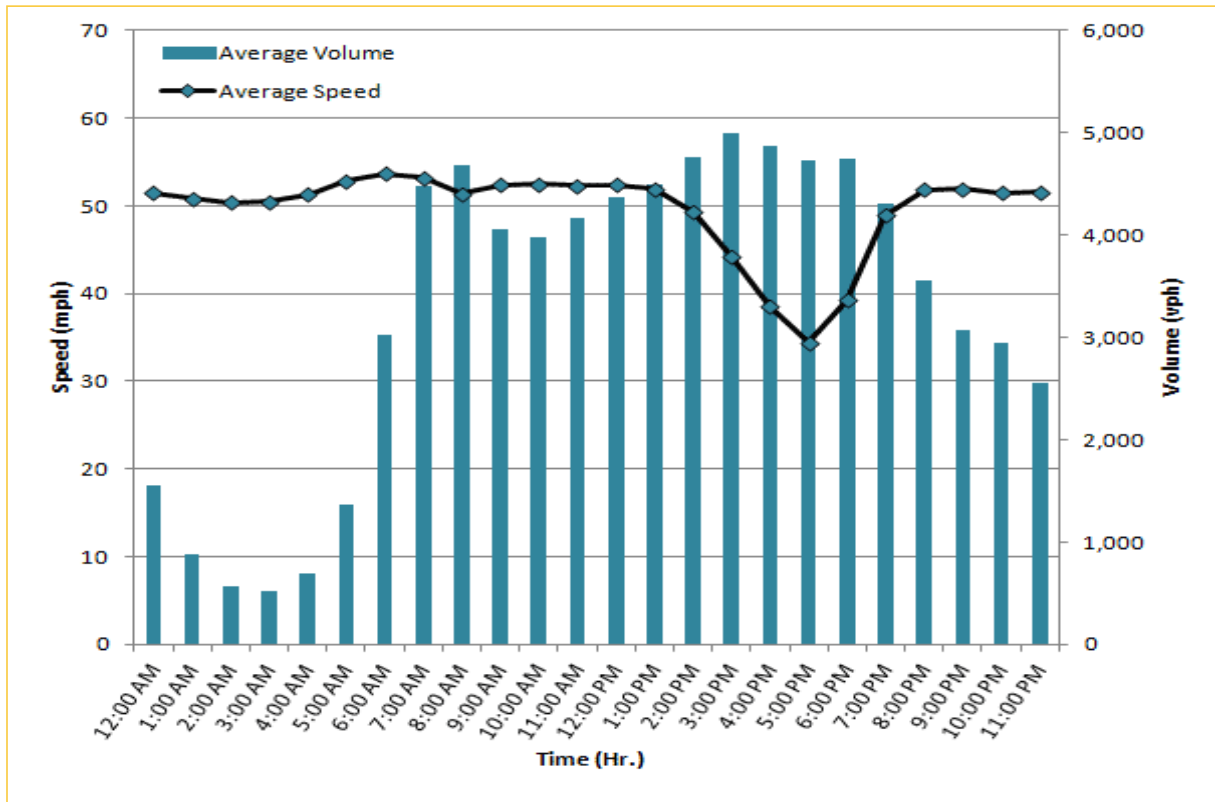



* Twelve-month average from July 1st, 2013 to June 30th, 2014.

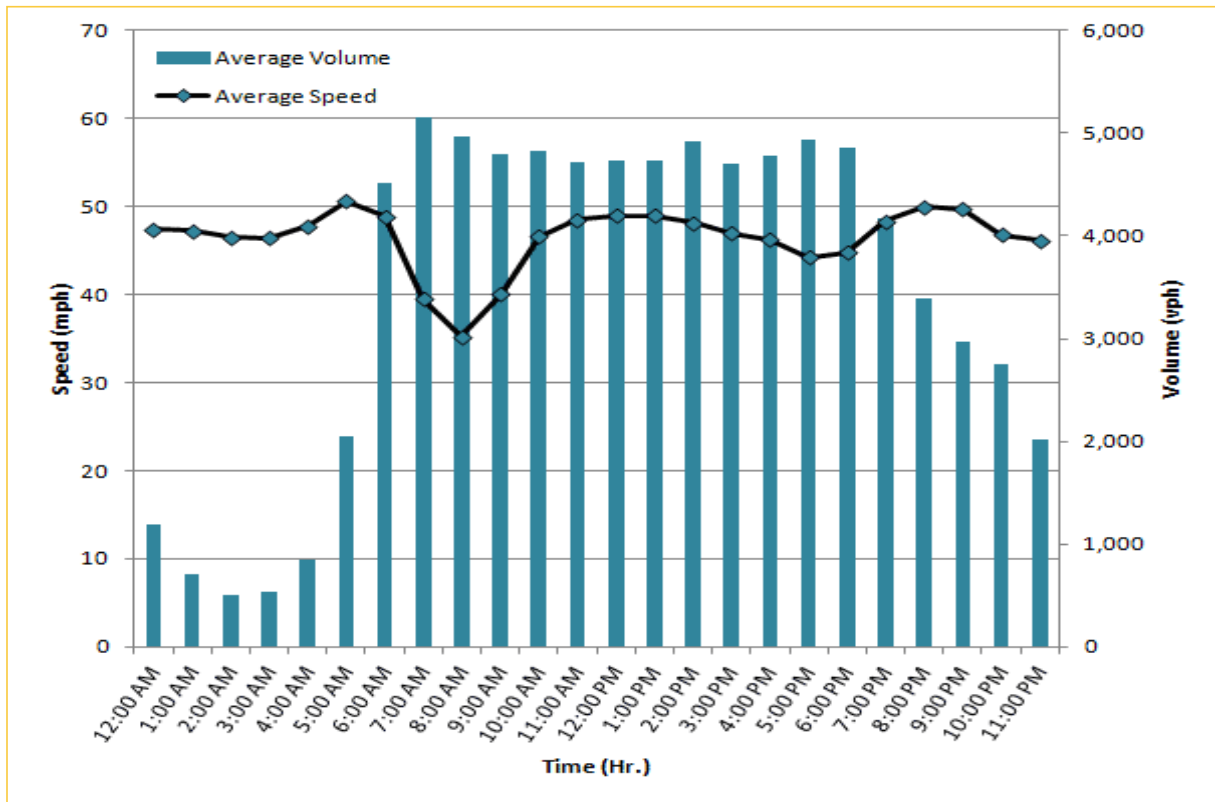
TRAVEL TIME RELIABILITY REPORT

Weekdays Speeds and Volumes by Time of Day*

I-95 Northbound: 17.3 Miles
From: US-1
To: Miami-Dade / Broward County Line

I-95 Southbound: 17.3 Miles
From: Miami-Dade / Broward County Line
To: US-1

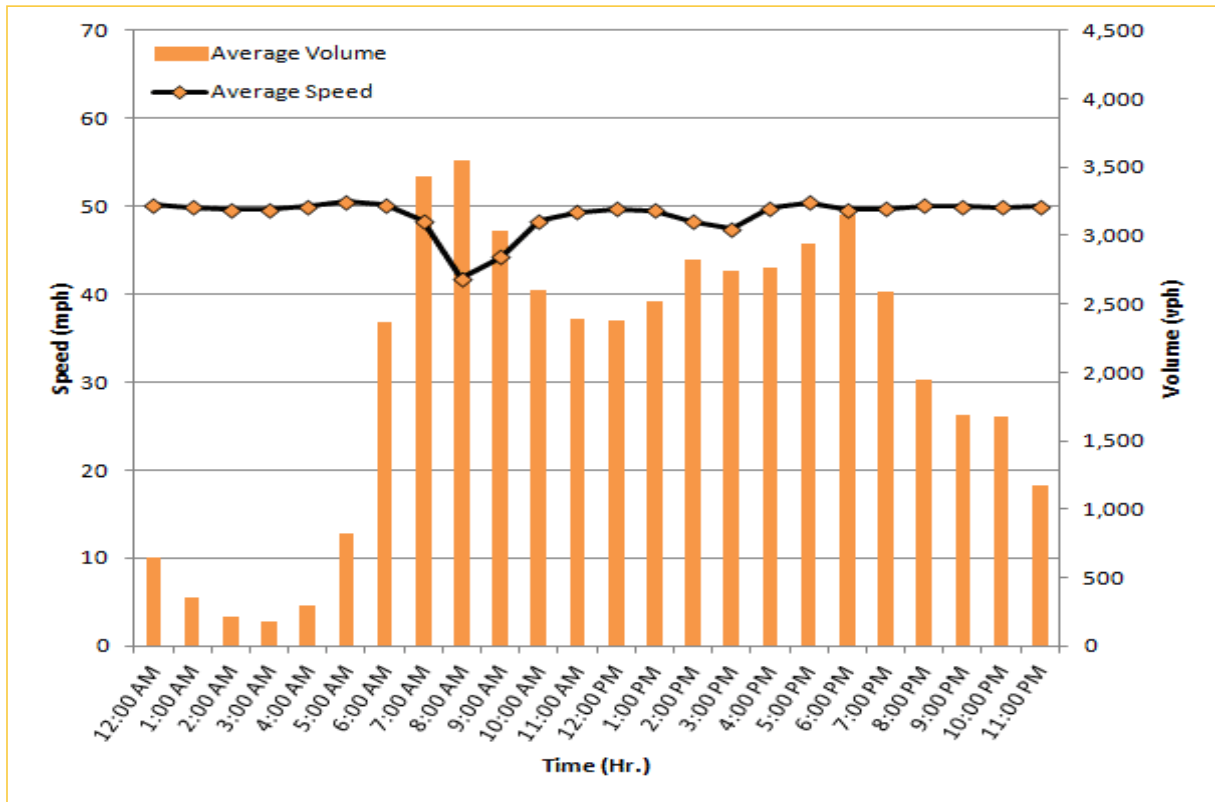



* Twelve-month average from July 1st, 2013 to June 30th, 2014. Excludes express lanes.

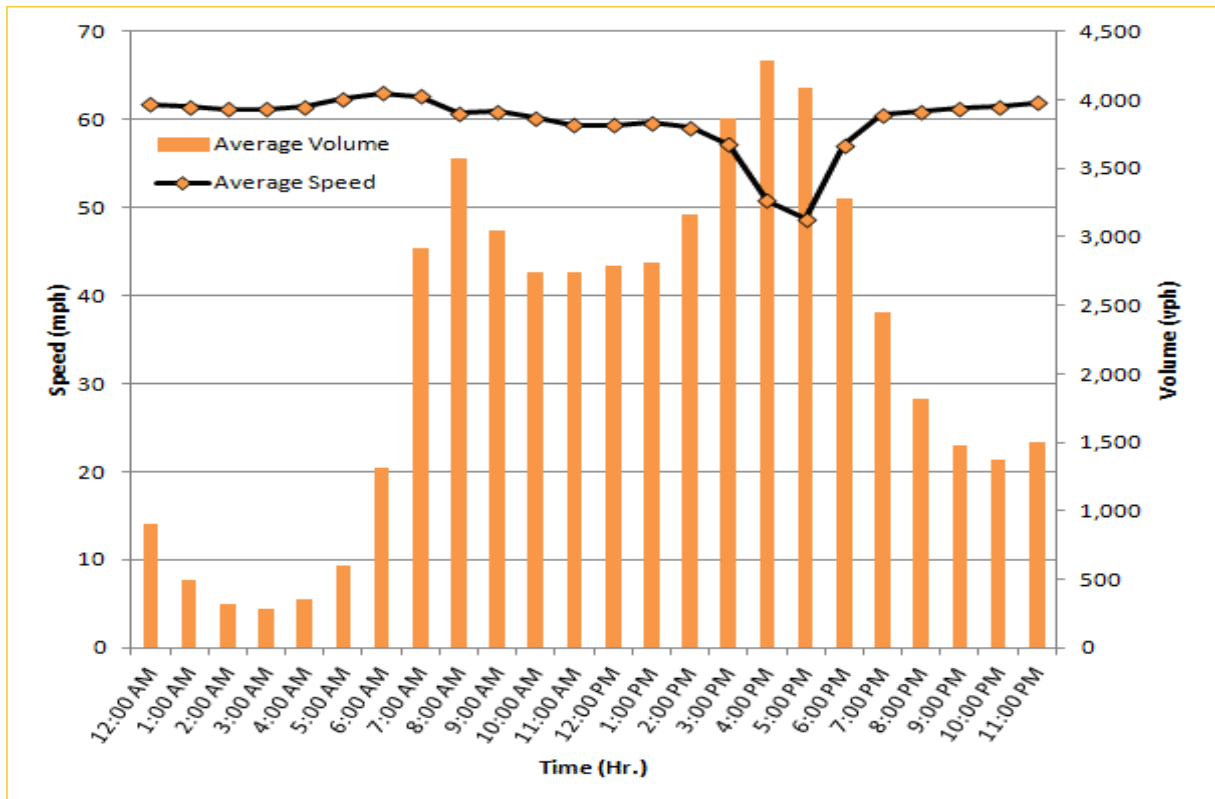
TRAVEL TIME RELIABILITY REPORT

Weekdays Speeds and Volumes by Time of Day*

I-195 Eastbound: 4.9 Miles
From: West of North Miami Avenue
To: West of Alton Road



I-195 Westbound: 4.9 Miles
From: West of Alton Road
To: West of North Miami Avenue

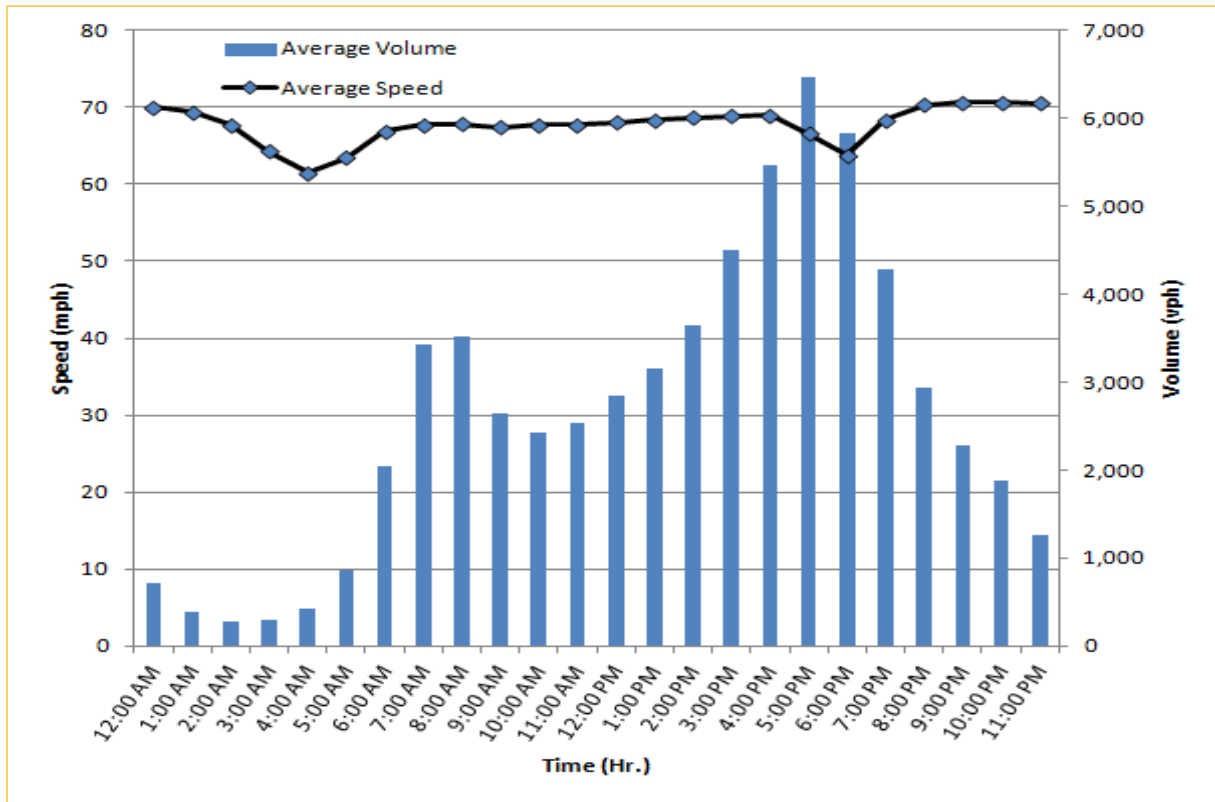


* Twelve-month average from July 1st, 2013 to June 30th, 2014.

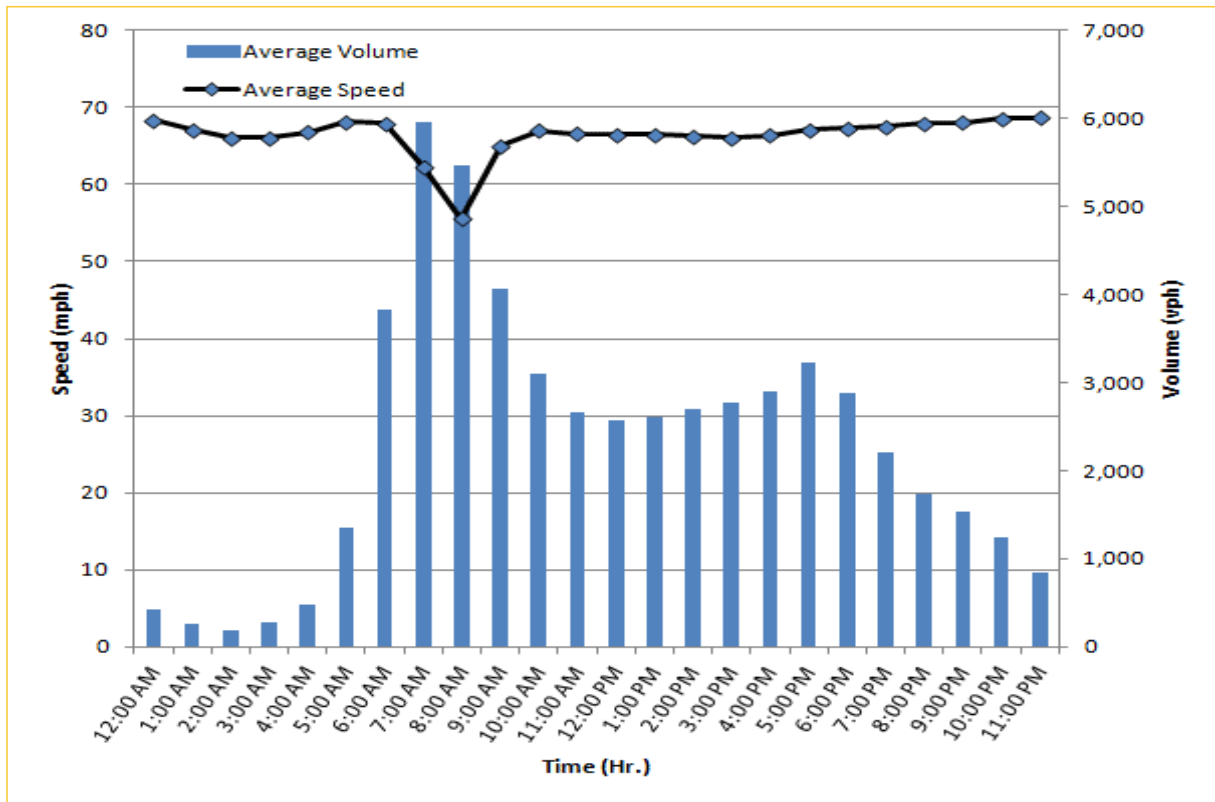
TRAVEL TIME RELIABILITY REPORT

Weekdays Speeds and Volumes by Time of Day*

I-75 Northbound: 5.4 Miles
From: West of SR 826
To: North of Florida's Turnpike



I-75 Southbound: 5.4 Miles
From: North of Florida's Turnpike
To: West of SR 826

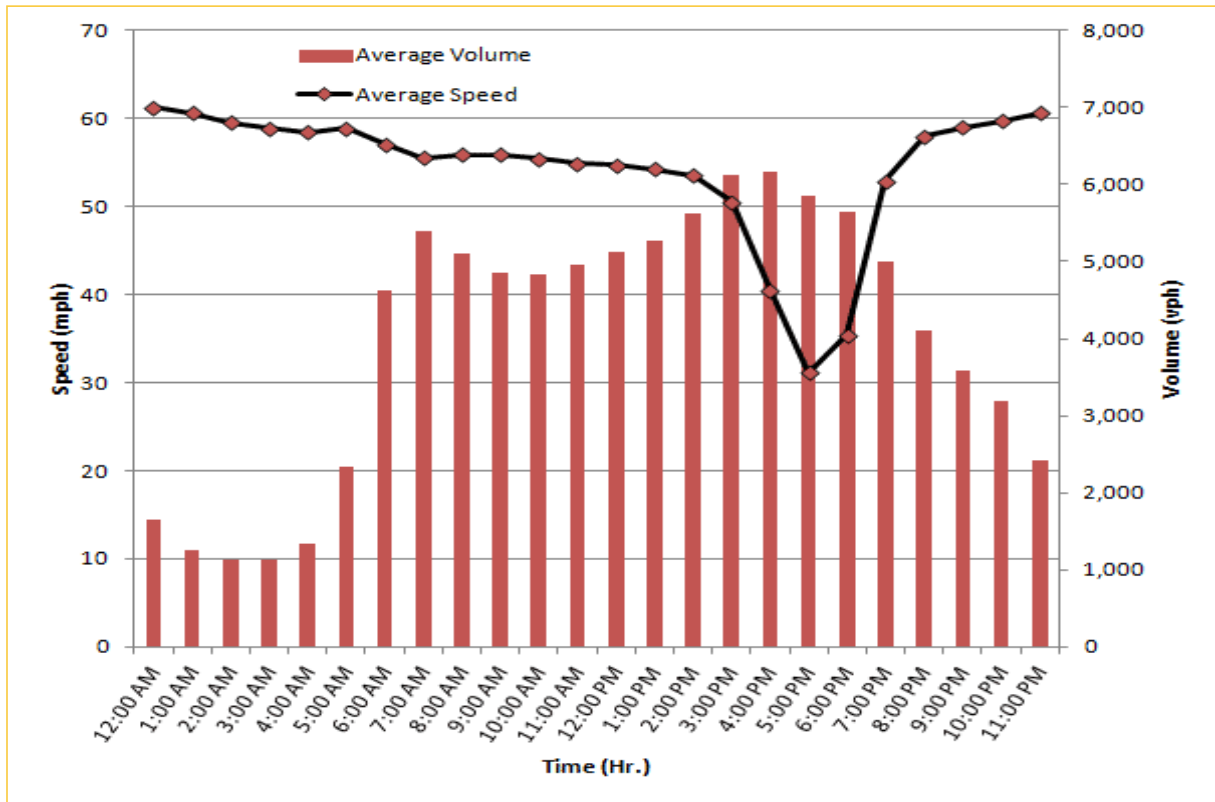


* Twelve-month average from July 1st, 2013 to June 30th, 2014.

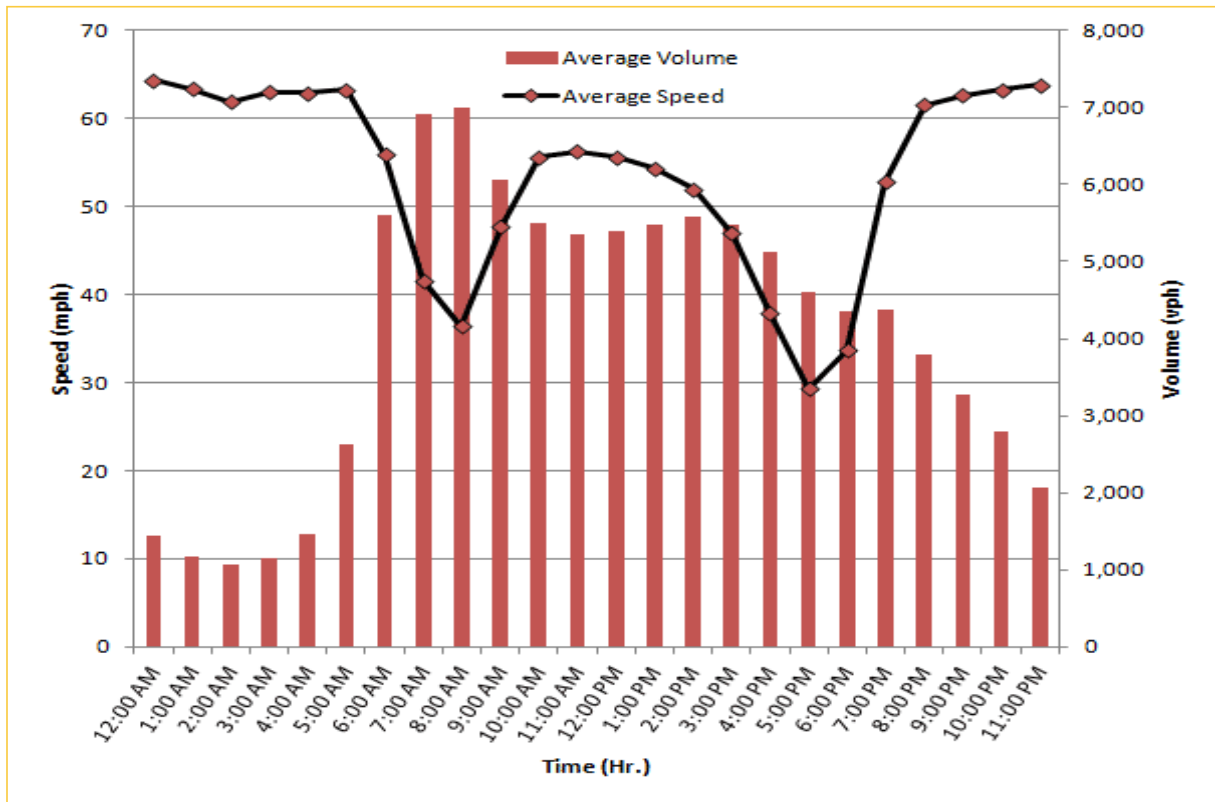
TRAVEL TIME RELIABILITY REPORT

Weekdays Speeds and Volumes by Time of Day*

SR 826 Northbound: 8.4 Miles
From: South of NW 25 Street
To: North of NW 154 Street



SR 826 Southbound: 8.4 Miles
From: North of NW 154 Street
To: South of NW 25 Street

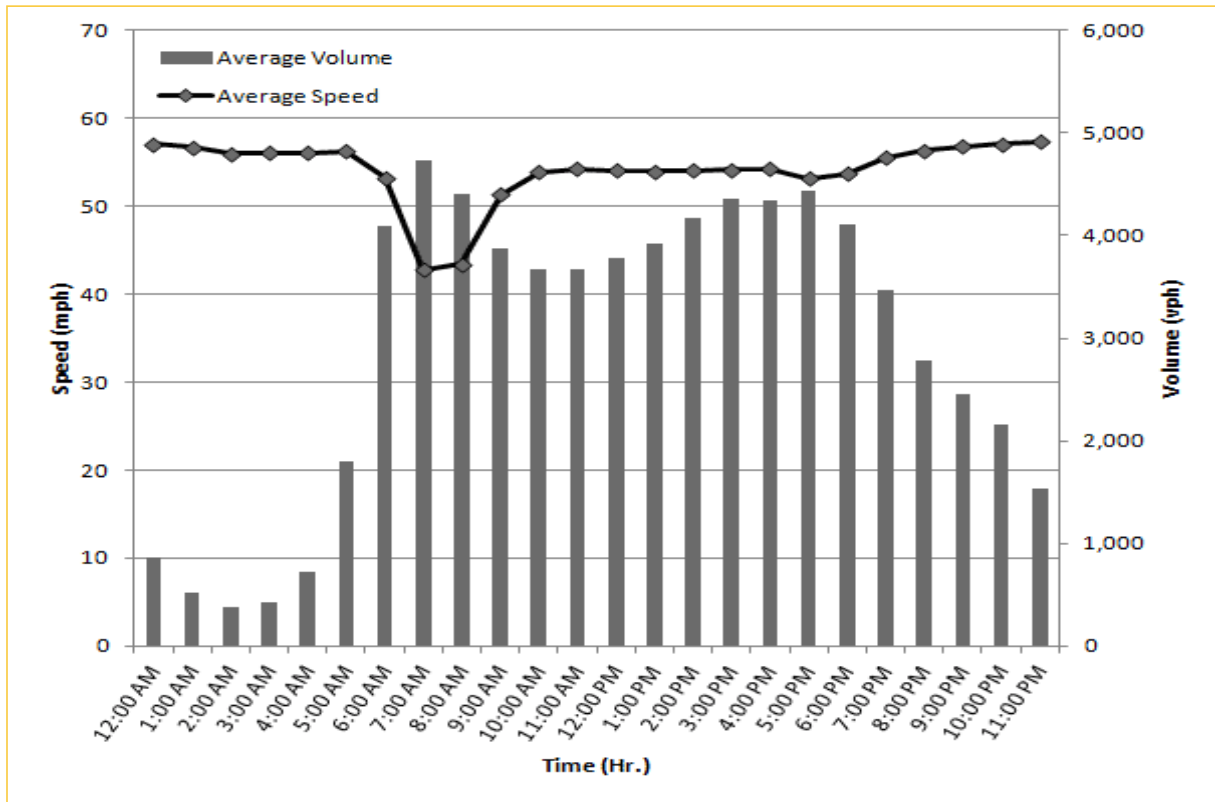


* Twelve-month average from July 1st, 2013 to June 30th, 2014.

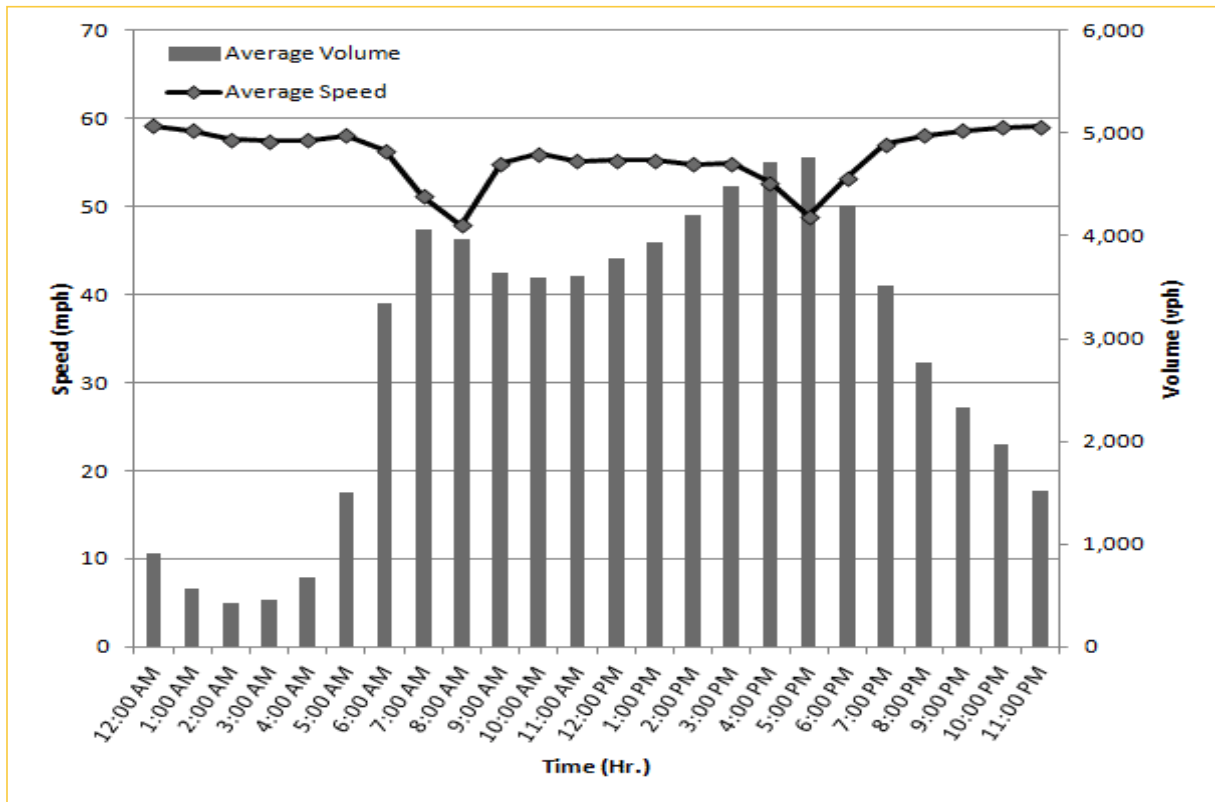
TRAVEL TIME RELIABILITY REPORT

Weekdays Speeds and Volumes by Time of Day*

SR 826 Eastbound: 7.1 Miles
From: West of NW 67 Avenue
To: East of NW 12 Avenue



SR 826 Westbound: 7.1 Miles
From: East of NW 12 Avenue
To: West of NW 67 Avenue

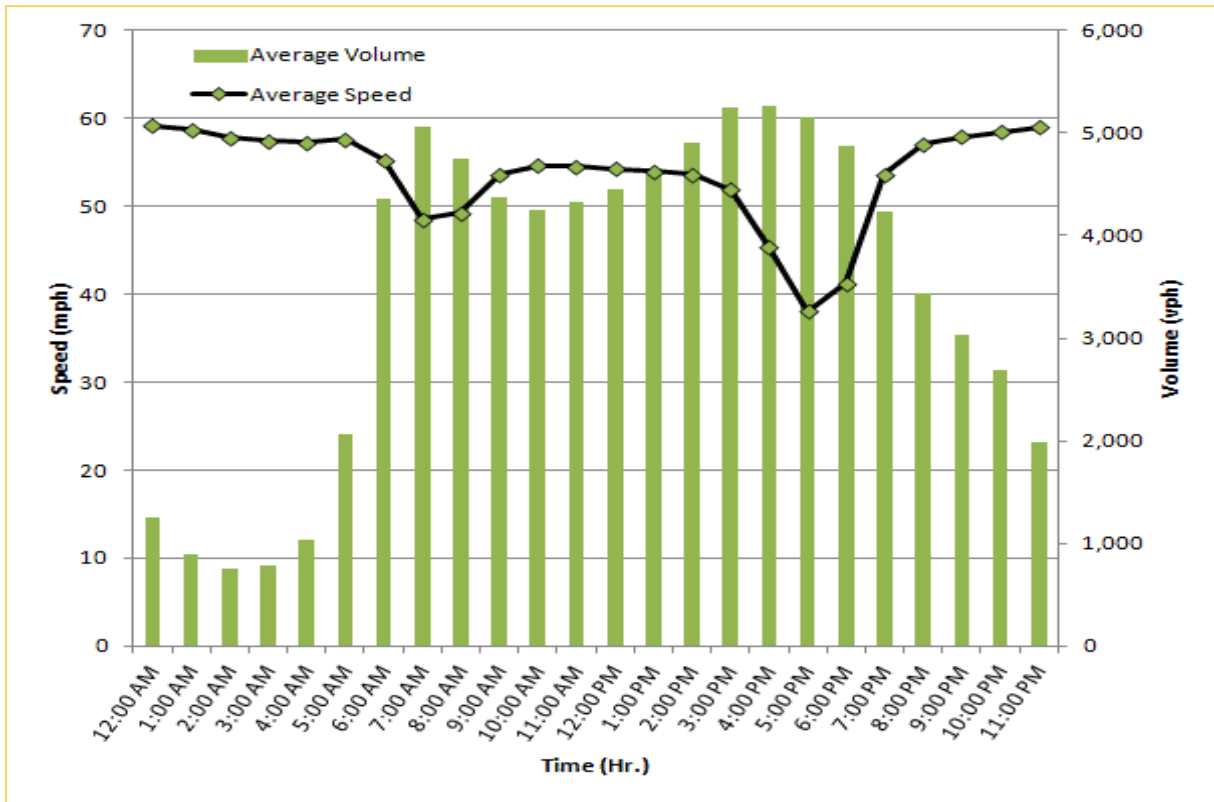


* Twelve-month average from July 1st, 2013 to June 30th, 2014.

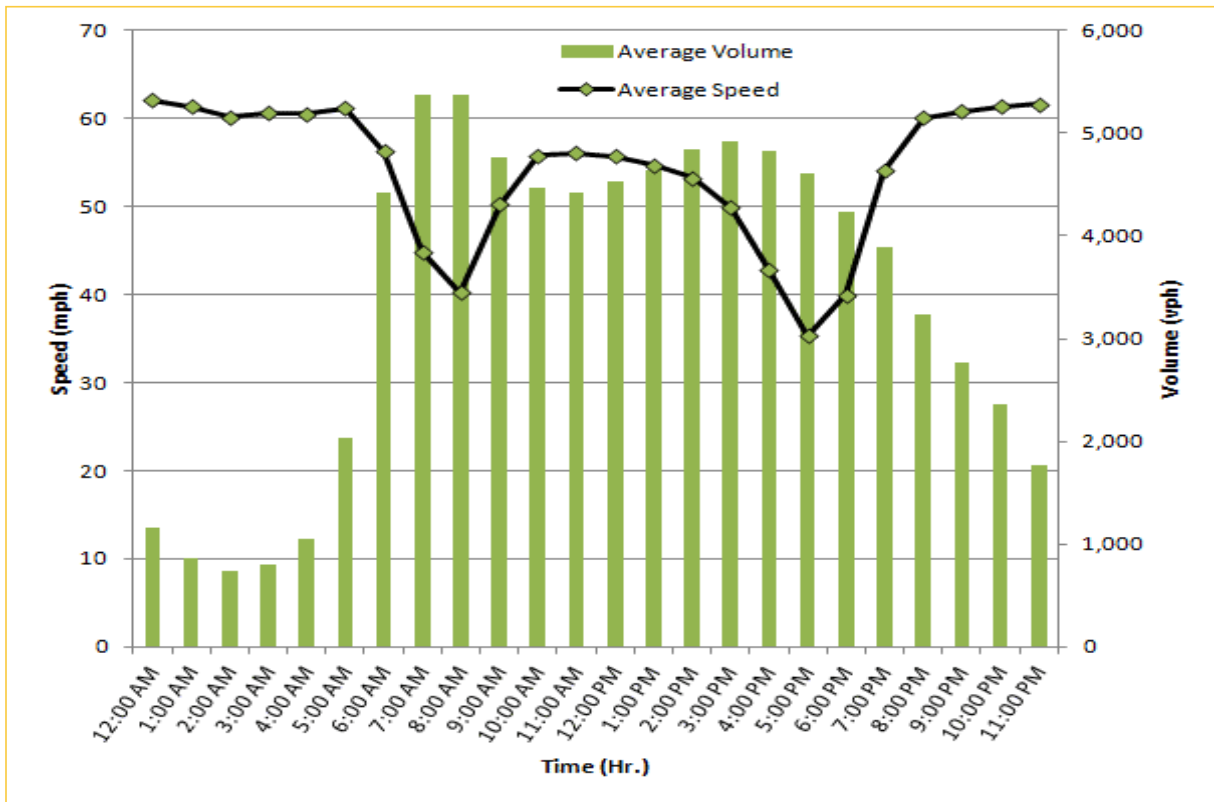
TRAVEL TIME RELIABILITY REPORT

Weekdays Speeds and Volumes by Time of Day*

SR 826 Northbound/Eastbound : 15.6 Miles
From: South of NW 25 Street
To: East of NW 12 Avenue

SR 826 Southbound/Westbound: 15.6 Miles
From: East of NW 12 Avenue
To: South of NW 25 Street

* Twelve-month average from July 1st, 2013 to June 30th, 2014.