

TRAVEL TIME RELIABILITY REPORT

Travel Time Index by Roadway*

Time	I-95		I-195		I-75		SR 826					
	NB	SB	EB	WB	NB	SB	NB	EB	NB/EB	SB	WB	SB/WB
0:00	1.20	1.23	1.13	1.02	0.95	0.97	1.03	1.11	1.06	0.98	1.06	1.02
1:00	1.22	1.25	1.14	1.02	0.96	0.98	1.03	1.12	1.07	1.01	1.07	1.04
2:00	1.24	1.28	1.14	1.02	0.98	1.00	1.05	1.13	1.09	1.02	1.09	1.05
3:00	1.23	1.28	1.15	1.02	1.03	1.00	1.07	1.13	1.10	1.00	1.09	1.04
4:00	1.21	1.24	1.14	1.02	1.07	0.99	1.07	1.13	1.10	1.00	1.09	1.04
5:00	1.17	1.18	1.13	1.00	1.04	0.97	1.07	1.13	1.10	1.00	1.08	1.03
6:00	1.16	1.24	1.14	0.99	0.99	0.97	1.10	1.19	1.14	1.14	1.12	1.13
7:00	1.19	1.62	1.19	0.99	0.97	1.06	1.13	1.54	1.32	1.53	1.26	1.41
8:00	1.23	1.85	1.40	1.03	0.98	1.21	1.13	1.56	1.31	1.80	1.35	1.59
9:00	1.20	1.67	1.36	1.03	0.98	1.02	1.13	1.27	1.19	1.39	1.17	1.29
10:00	1.19	1.35	1.22	1.03	0.98	0.98	1.13	1.18	1.16	1.15	1.14	1.14
11:00	1.20	1.26	1.16	1.05	0.97	0.99	1.14	1.17	1.15	1.14	1.14	1.14
12:00	1.20	1.24	1.15	1.05	0.97	0.99	1.15	1.17	1.16	1.16	1.13	1.15
13:00	1.21	1.25	1.16	1.04	0.97	0.99	1.17	1.18	1.18	1.22	1.14	1.18
14:00	1.29	1.28	1.20	1.05	0.96	1.00	1.20	1.18	1.19	1.28	1.15	1.22
15:00	1.46	1.33	1.24	1.10	0.96	1.00	1.28	1.17	1.23	1.40	1.15	1.29
16:00	1.67	1.35	1.16	1.27	0.96	0.99	1.61	1.18	1.41	1.71	1.22	1.49
17:00	1.90	1.43	1.14	1.35	1.01	0.98	2.10	1.20	1.68	2.26	1.33	1.84
18:00	1.67	1.40	1.16	1.14	1.09	0.98	1.89	1.20	1.58	1.98	1.19	1.63
19:00	1.33	1.27	1.15	1.03	1.00	0.98	1.23	1.15	1.19	1.26	1.10	1.19
20:00	1.22	1.21	1.14	1.02	0.95	0.97	1.09	1.12	1.10	1.03	1.08	1.05
21:00	1.20	1.21	1.14	1.02	0.94	0.97	1.06	1.12	1.09	1.00	1.08	1.04
22:00	1.22	1.23	1.14	1.02	0.94	0.96	1.05	1.11	1.08	1.00	1.07	1.03
23:00	1.21	1.24	1.14	1.01	0.94	0.96	1.04	1.10	1.07	0.99	1.06	1.03
FFS**	63 mph	62 mph	58 mph	62 mph	66 mph	66 mph	63 mph	63 mph	63 mph	63 mph	63 mph	63 mph

Maximum Travel Time Index. ** FFS: Free Flow Speed

Travel Time Index (TTI) is a measure of average conditions that indicates how much longer, **on average**, travel times are during congestion compared to during light traffic.

Real World Example: A TTI of 1.60 means that for a trip that usually takes 10 minutes in light traffic, a traveler should budget for an additional 6 minutes **on average**.

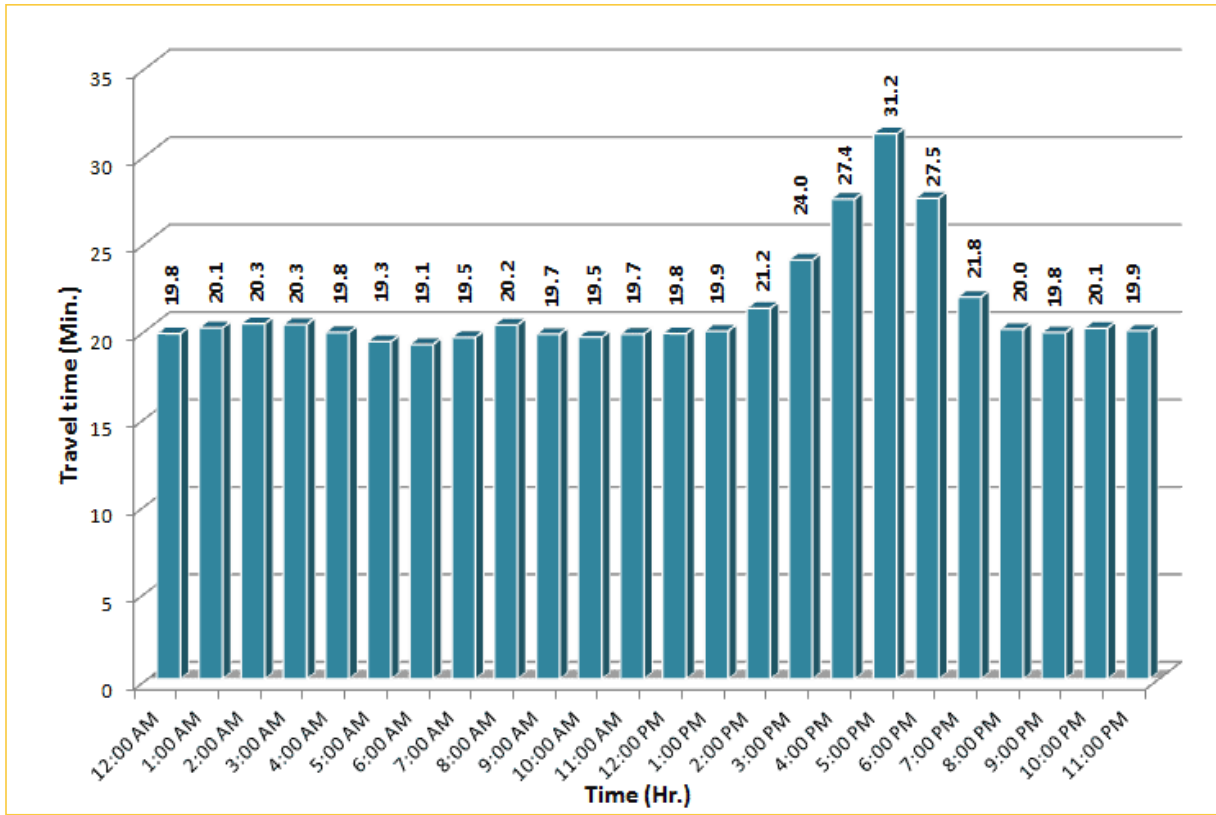


* Twelve-month average from April 1st, 2013 to March 31th, 2014.

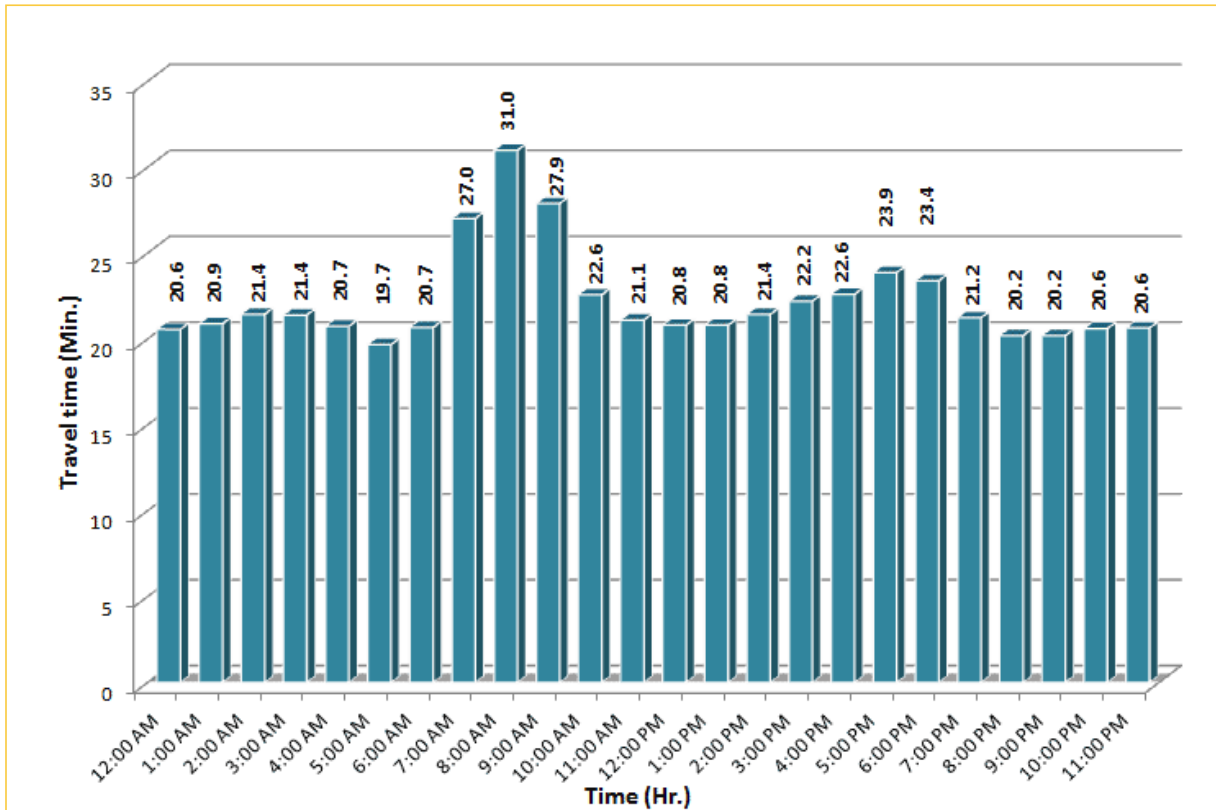
TRAVEL TIME RELIABILITY REPORT

Weekdays Travel Times by Time of Day*

I-95 Northbound: 17.3 Miles
From: US-1
To: Miami-Dade / Broward County Line

I-95 Southbound: 17.3 Miles
From: Miami-Dade / Broward County Line
To: US-1

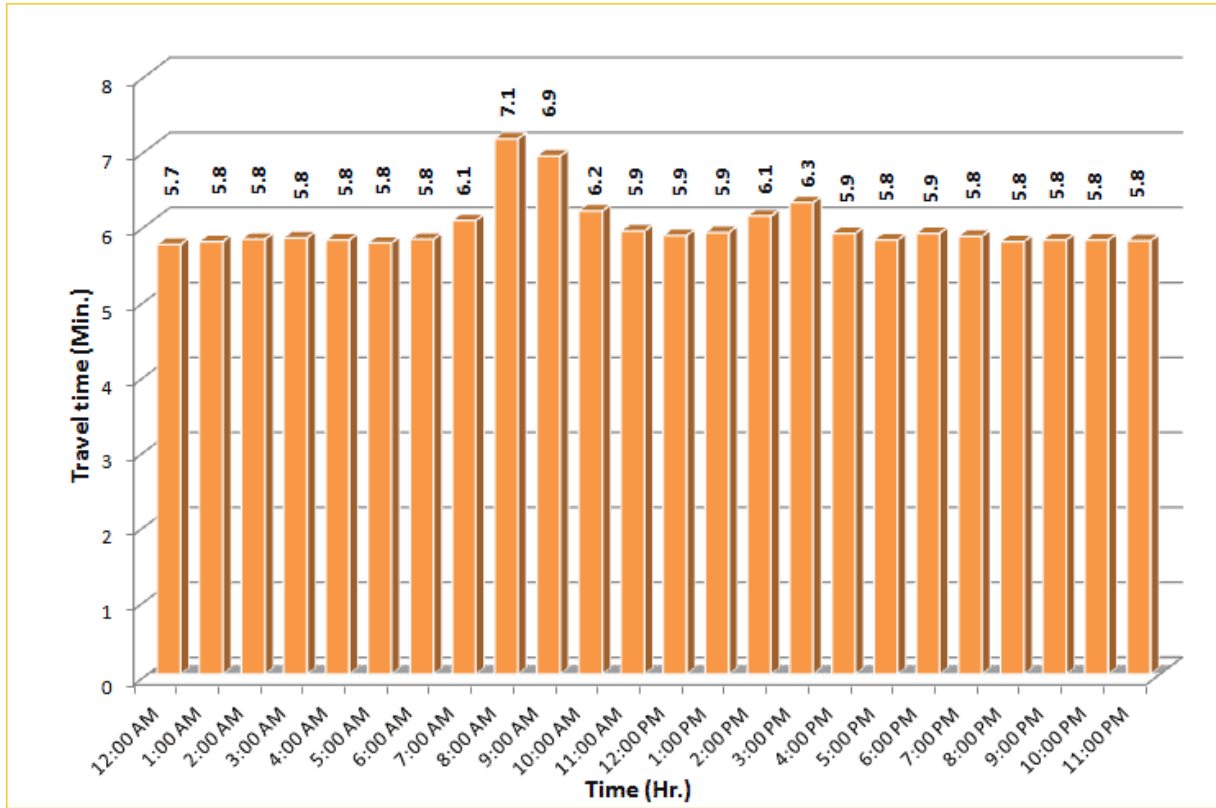



* Twelve-month average from April 1st, 2013 to March 31th, 2014. Excludes express lanes.

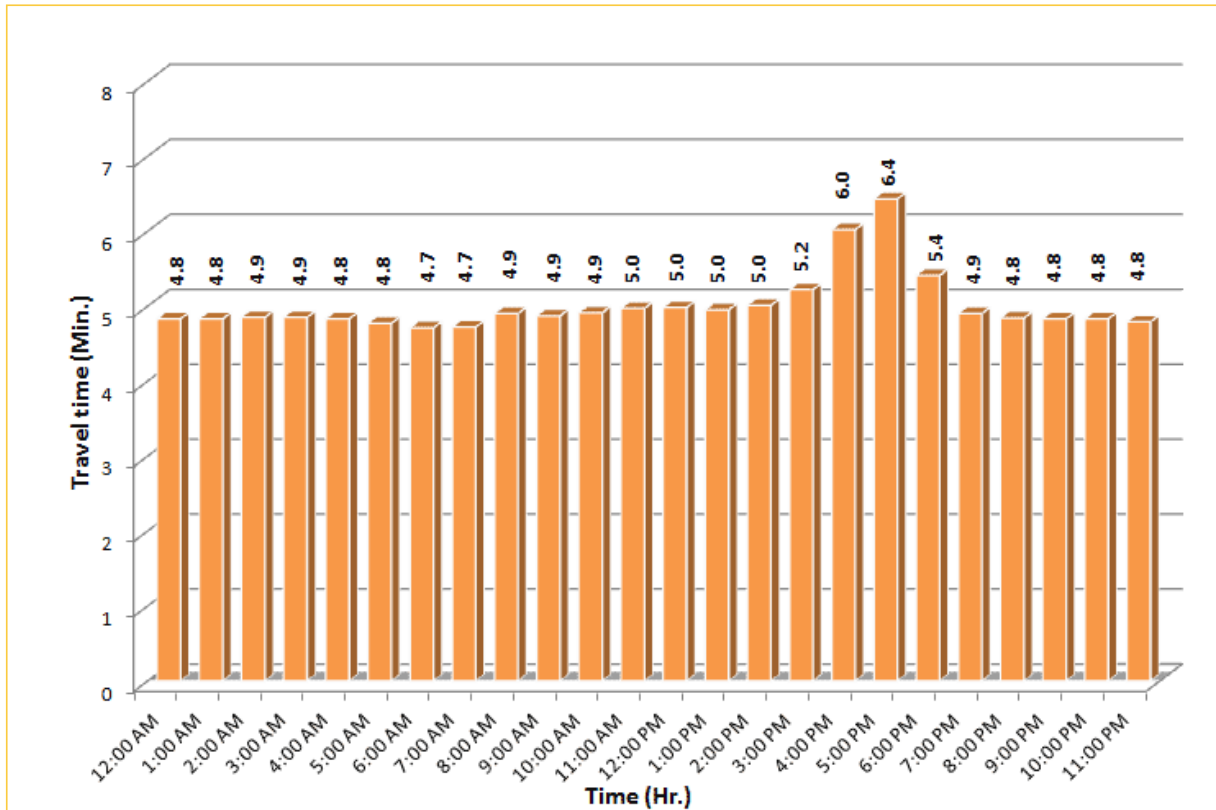
TRAVEL TIME RELIABILITY REPORT

Weekdays Travel Times by Time of Day*

I-195 Eastbound: 4.9 Miles
From: West of North Miami Avenue
To: West of Alton Road



I-195 Westbound: 4.9 Miles
From: West of Alton Road
To: West of North Miami Avenue


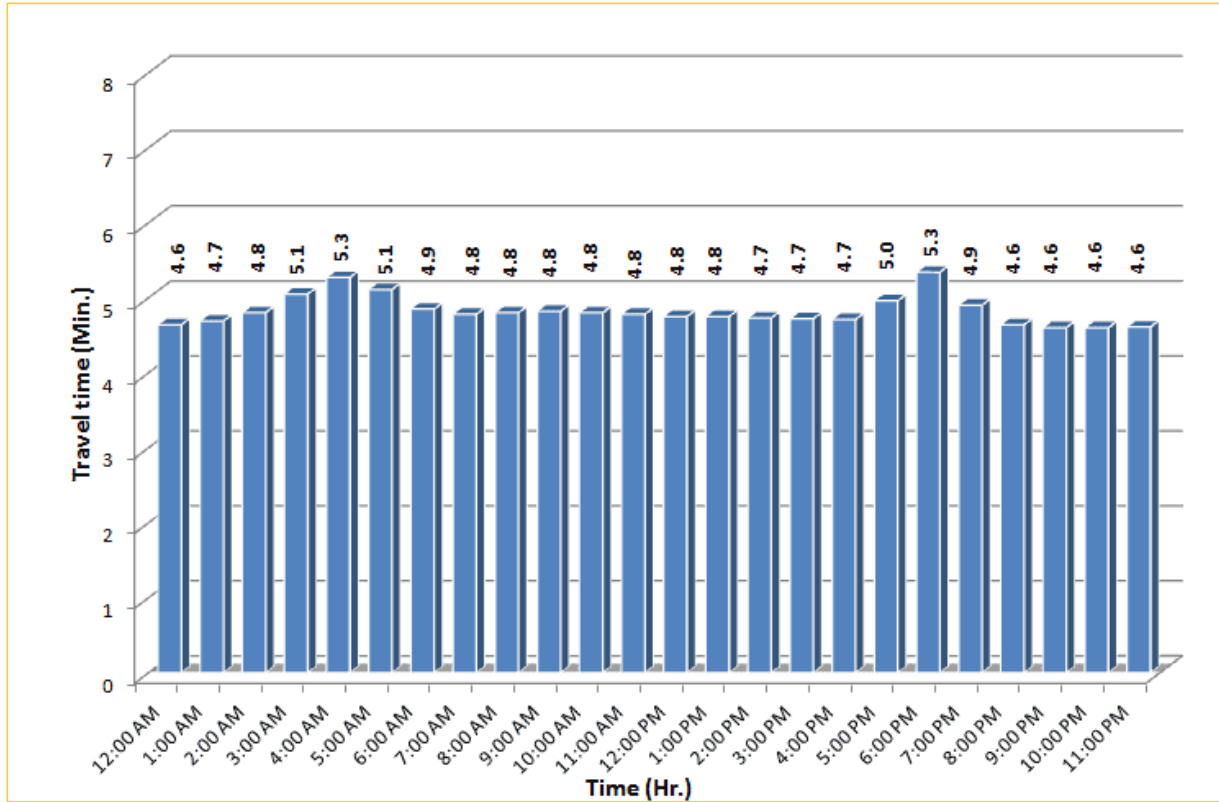


* Twelve-month average from April 1st, 2013 to March 31th, 2014.

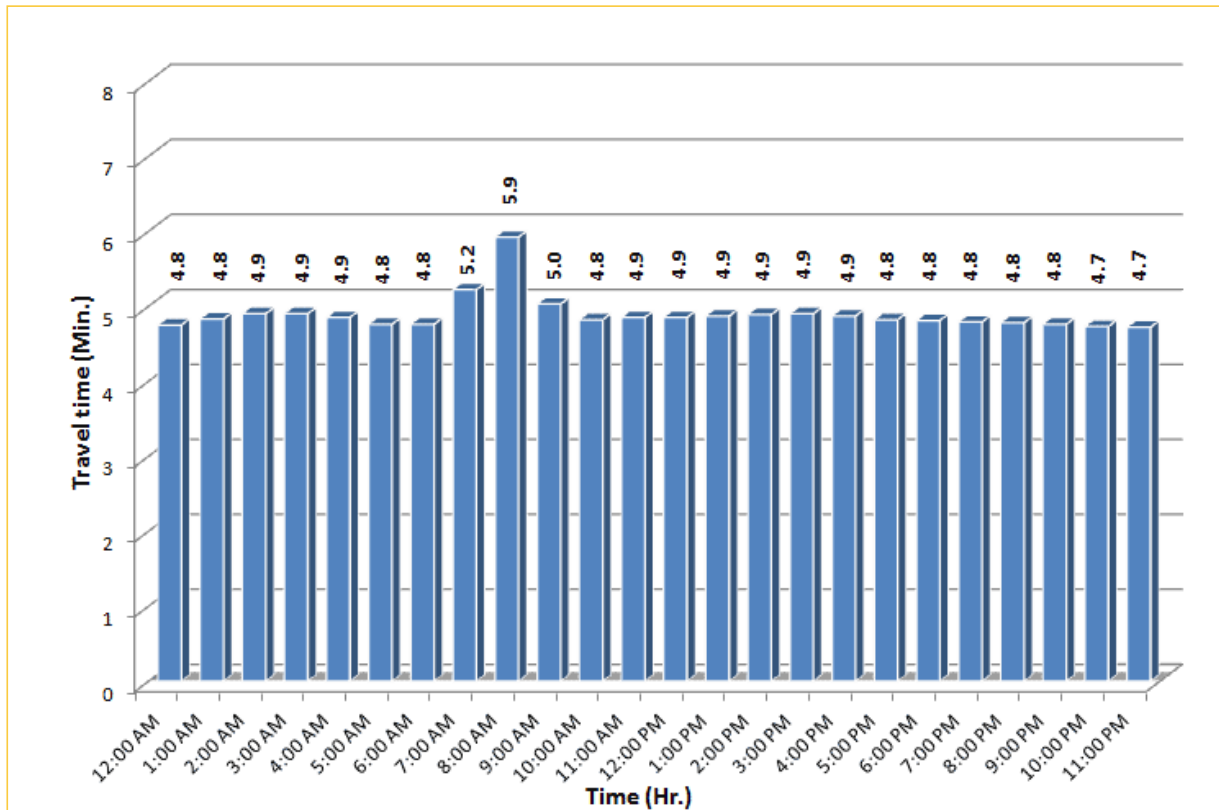
TRAVEL TIME RELIABILITY REPORT

Weekdays Travel Times by Time of Day*

I-75 Northbound: 5.4 Miles
From: West of SR 826
To: North of Florida's Turnpike

I-75 Southbound: 5.4 Miles
From: North of Florida's Turnpike
To: West of SR 826


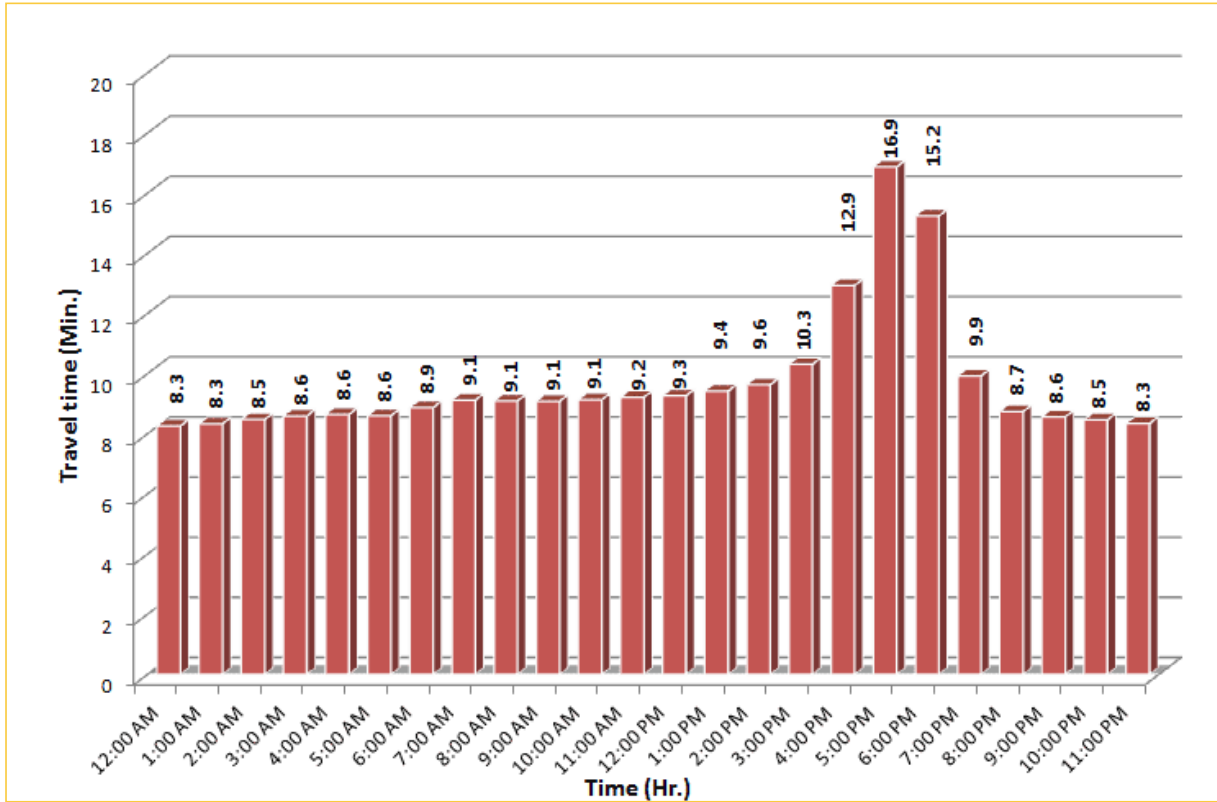



* Twelve-month average from April 1st, 2013 to March 31th, 2014.

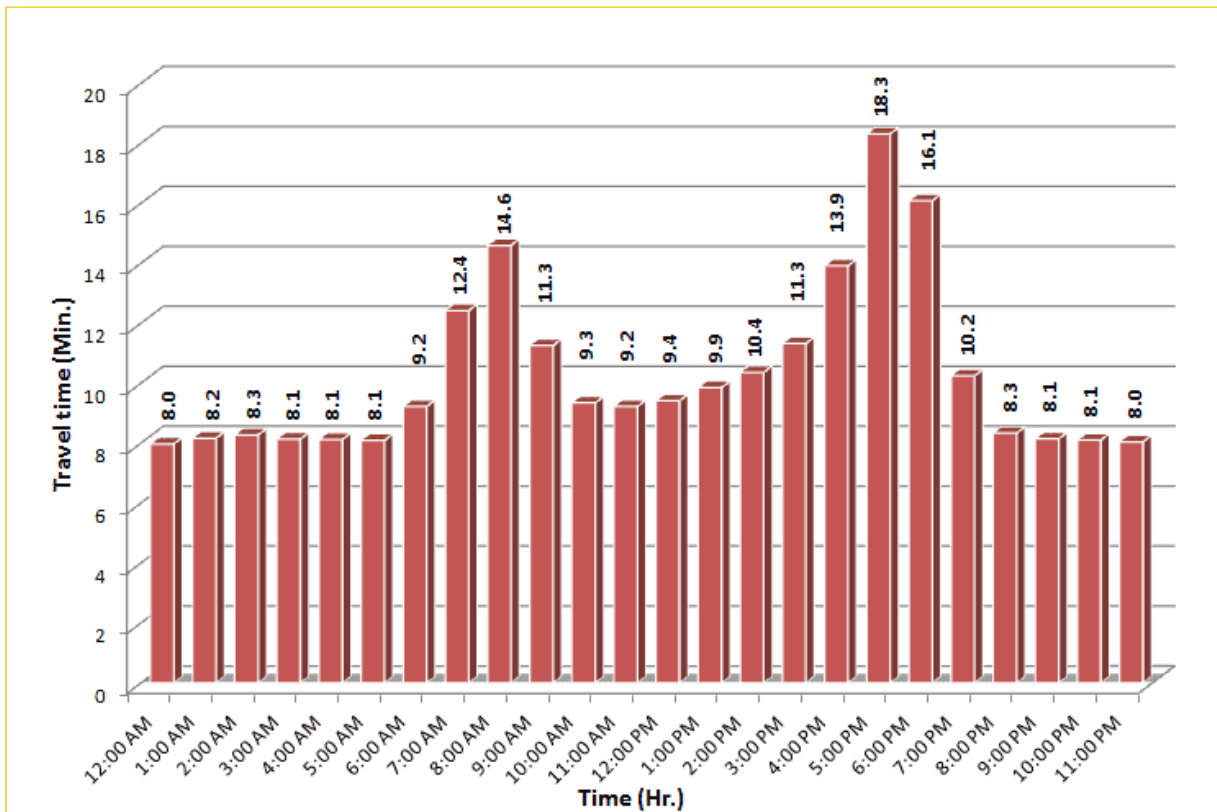
TRAVEL TIME RELIABILITY REPORT

Weekdays Travel Times by Time of Day*

SR 826 Northbound: 8.4 Miles
From: South of NW 25 Street
To: North of NW 154 Street

SR 826 Southbound: 8.4 Miles
From: North of NW 154 Street
To: South of NW 25 Street

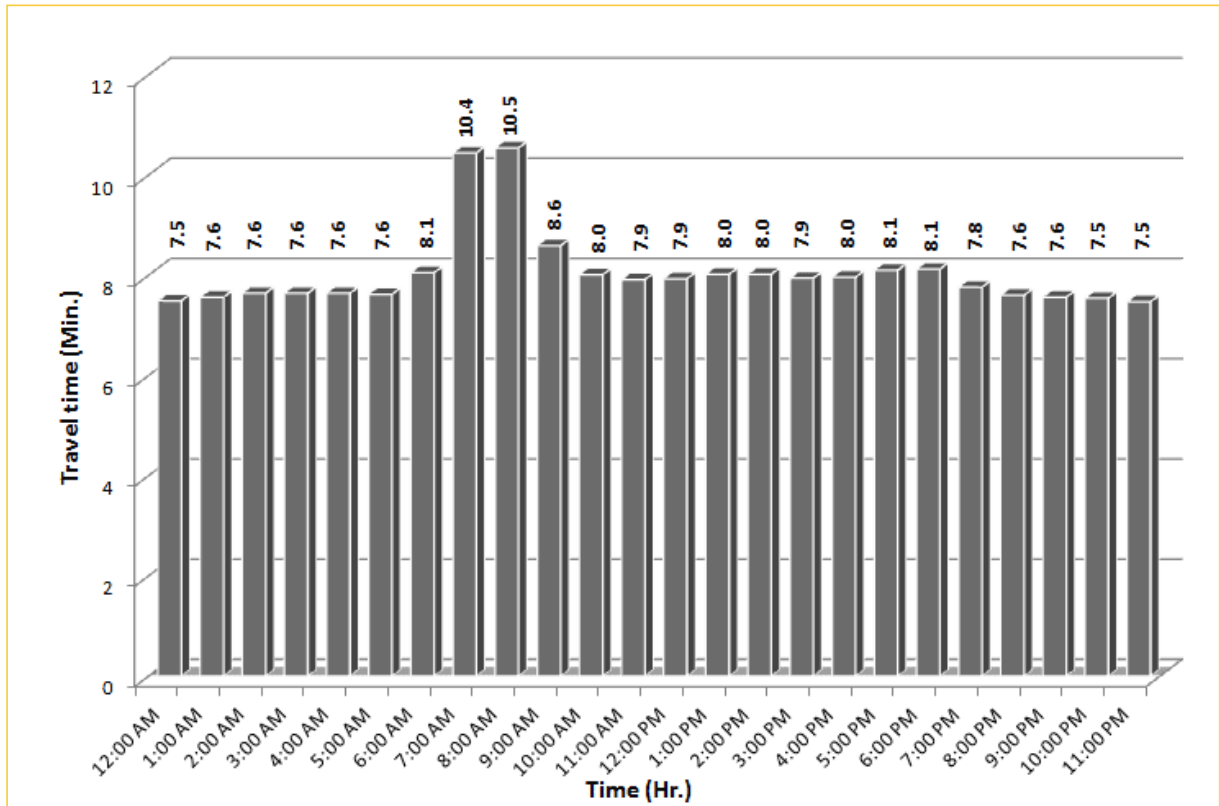



* Twelve-month average from April 1st, 2013 to March 31th, 2014.

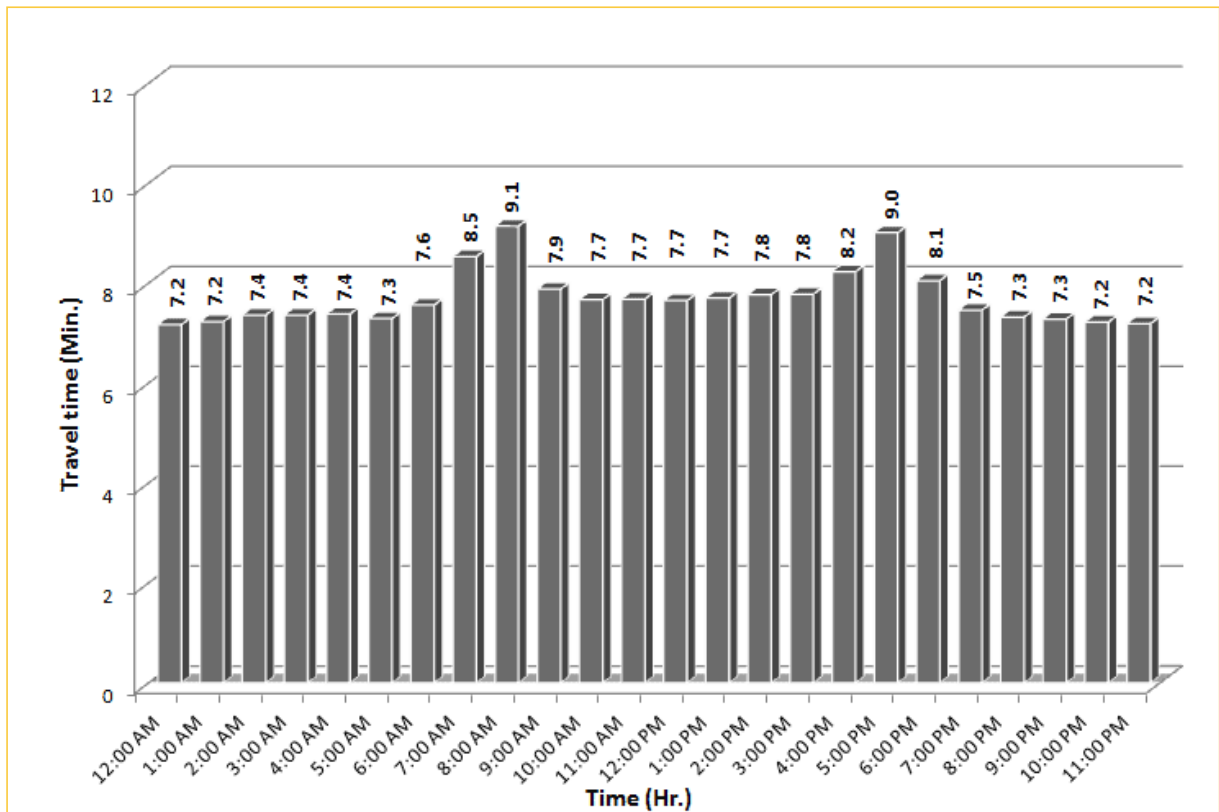
TRAVEL TIME RELIABILITY REPORT

Weekdays Travel Times by Time of Day*

SR 826 Eastbound: 7.1 Miles
From: West of NW 67 Avenue
To: East of NW 12 Avenue



SR 826 Westbound: 7.1 Miles
From: East of NW 12 Avenue
To: West of NW 67 Avenue

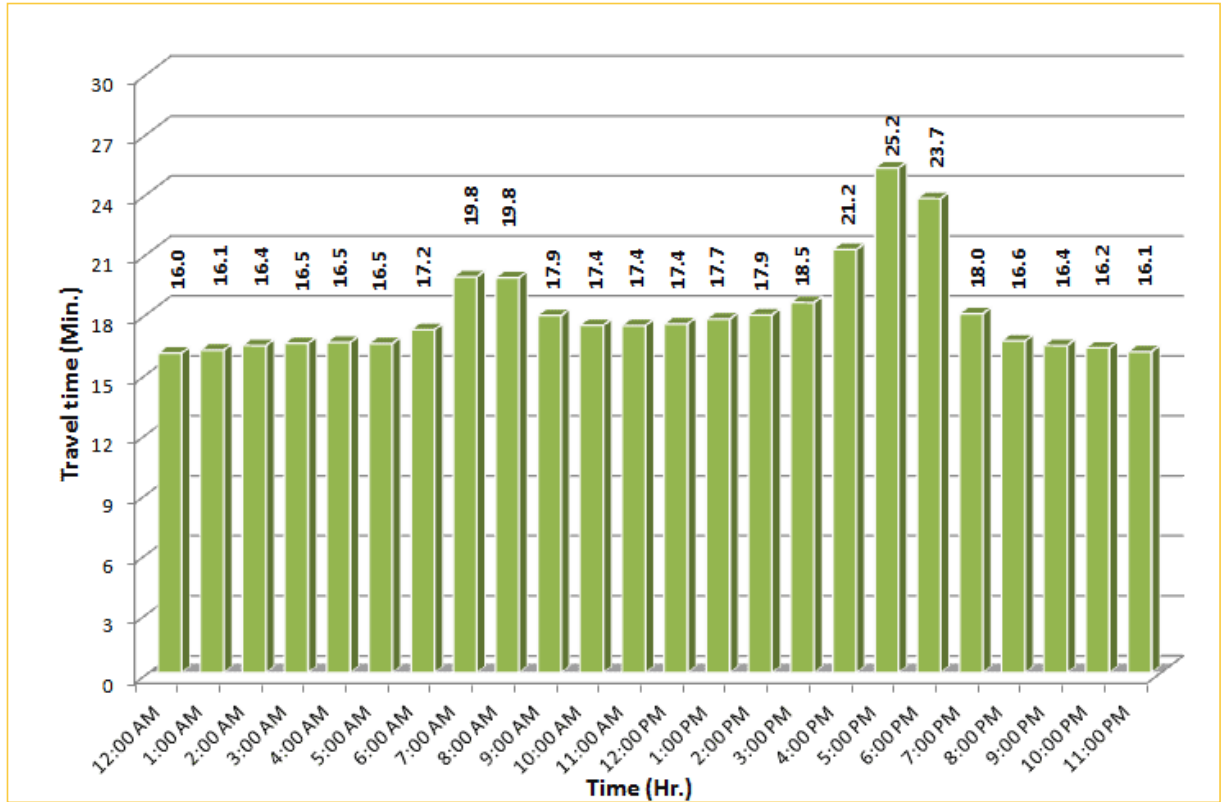


* Twelve-month average from April 1st, 2013 to March 31th, 2014.

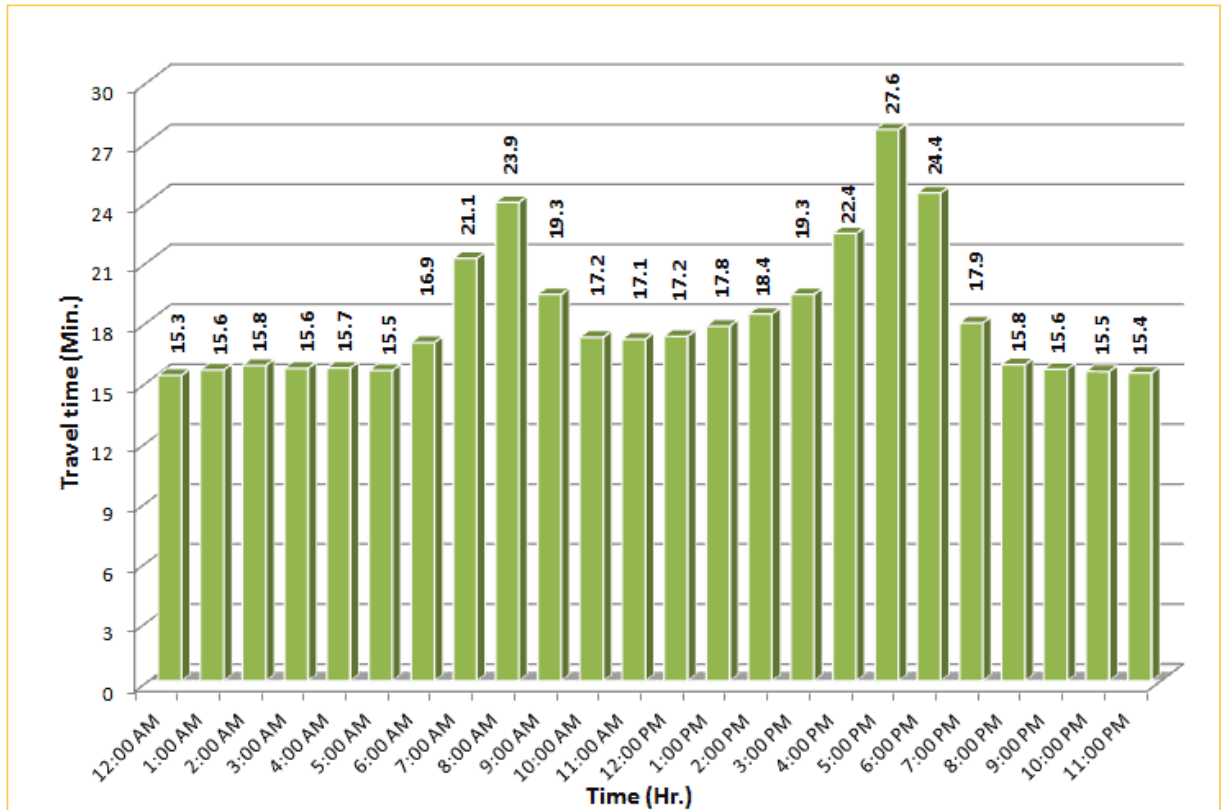
TRAVEL TIME RELIABILITY REPORT

Weekdays Travel Times by Time of Day*

SR 826 Northbound/Eastbound : 15.6 Miles
From: South of NW 25 Street
To: East of NW 12 Avenue



SR 826 Southbound/Westbound: 15.6 Miles
From: East of NW 12 Avenue
To: South of NW 25 Street

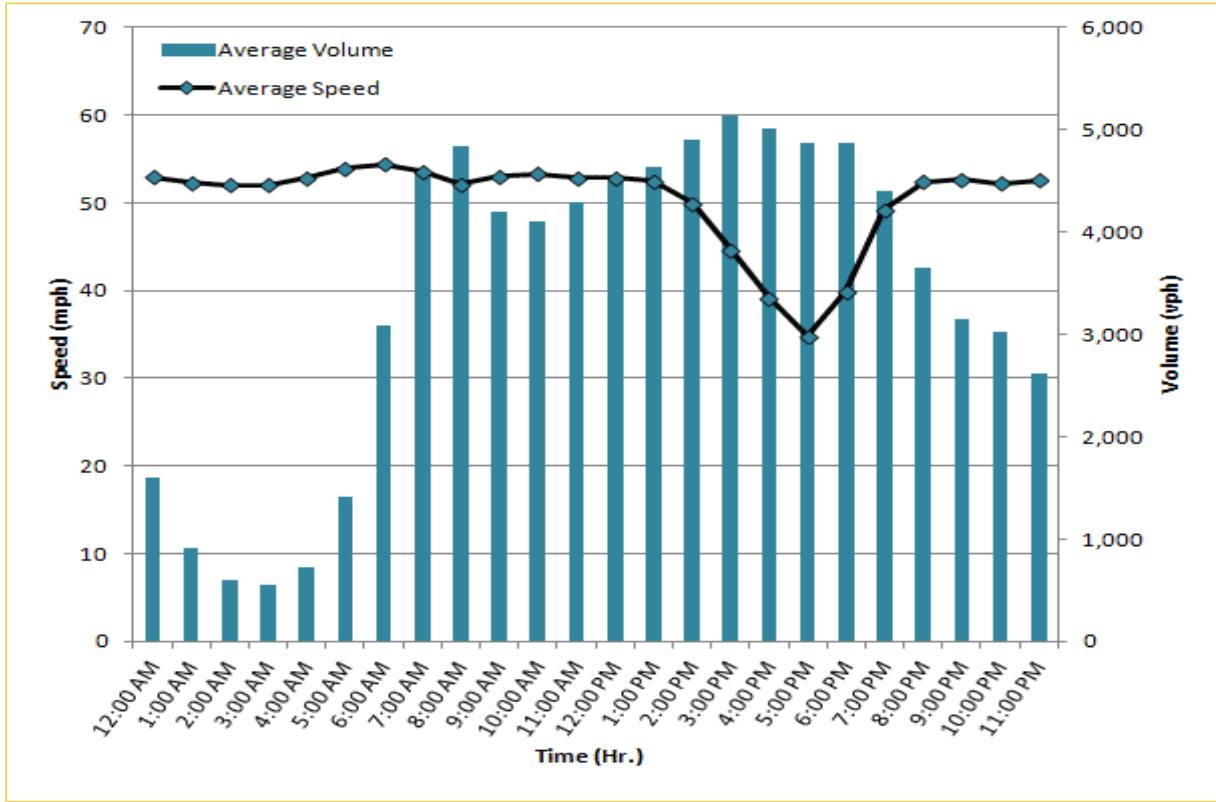


* Twelve-month average from April 1st, 2013 to March 31th, 2014.

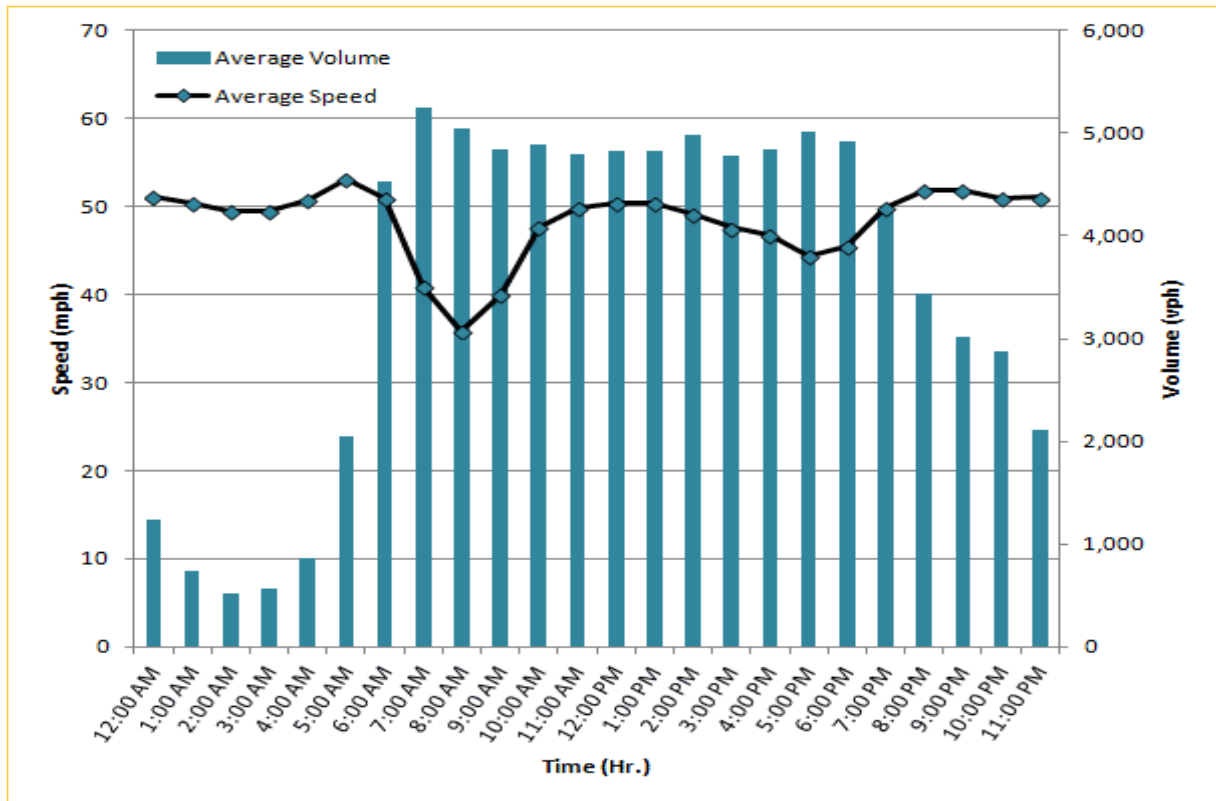
TRAVEL TIME RELIABILITY REPORT

Weekdays Speeds and Volumes by Time of Day*

I-95 Northbound: 17.3 Miles
From: US-1
To: Miami-Dade / Broward County Line

I-95 Southbound: 17.3 Miles
From: Miami-Dade / Broward County Line
To: US-1

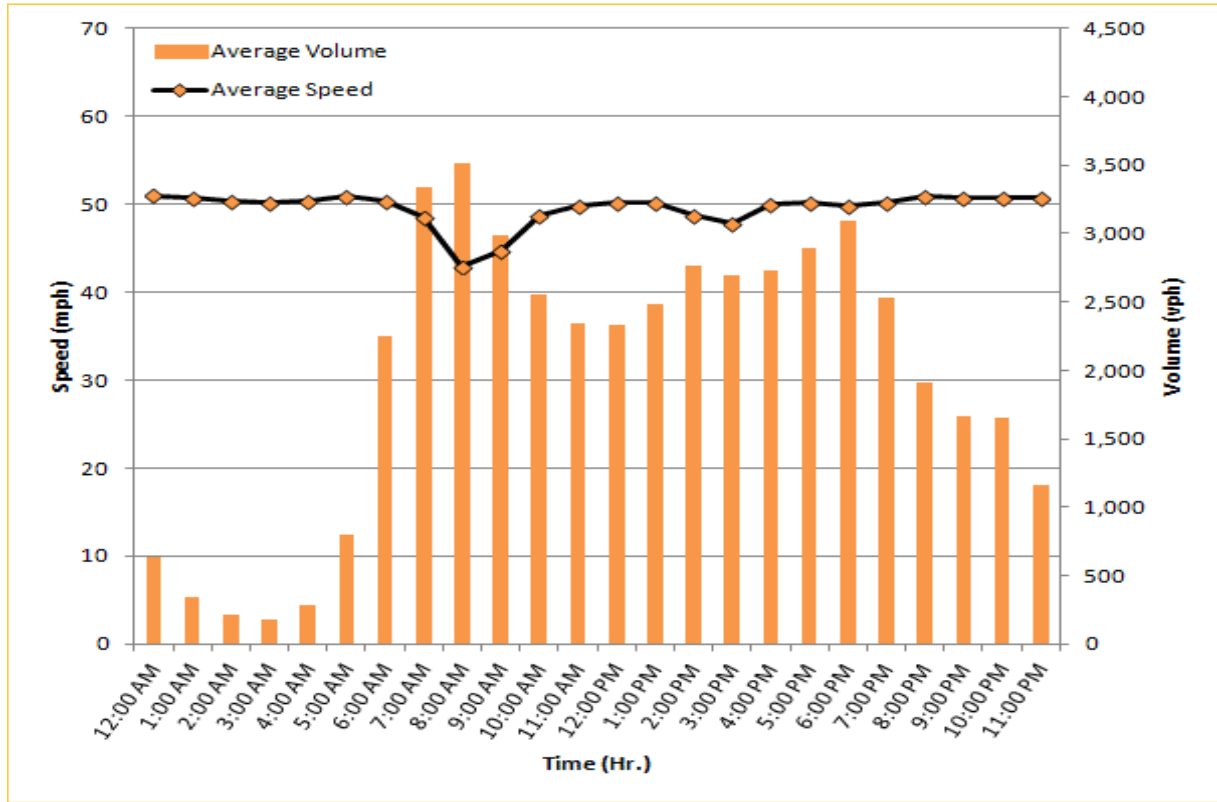



* Twelve-month average from April 1st, 2013 to March 31th, 2014. Excludes express lanes.

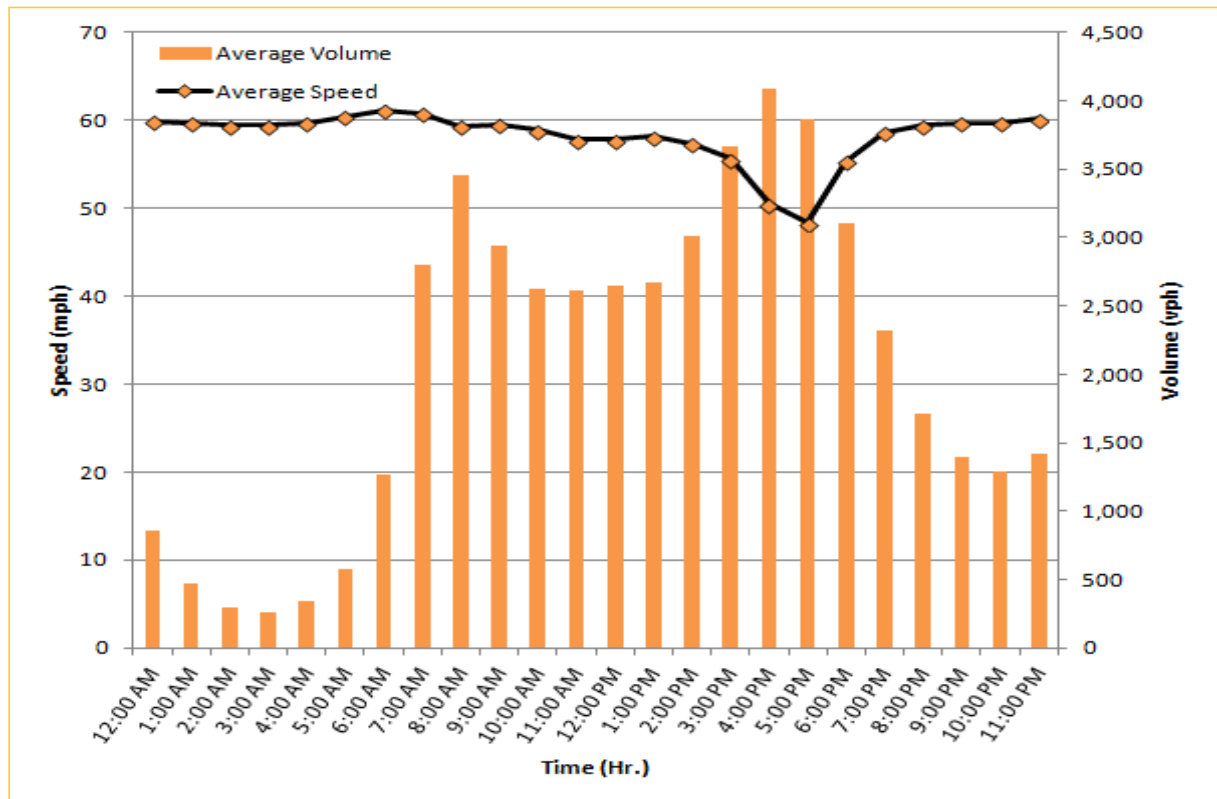
TRAVEL TIME RELIABILITY REPORT

Weekdays Speeds and Volumes by Time of Day*

I-195 Eastbound: 4.9 Miles
From: West of North Miami Avenue
To: West of Alton Road



I-195 Westbound: 4.9 Miles
From: West of Alton Road
To: West of North Miami Avenue

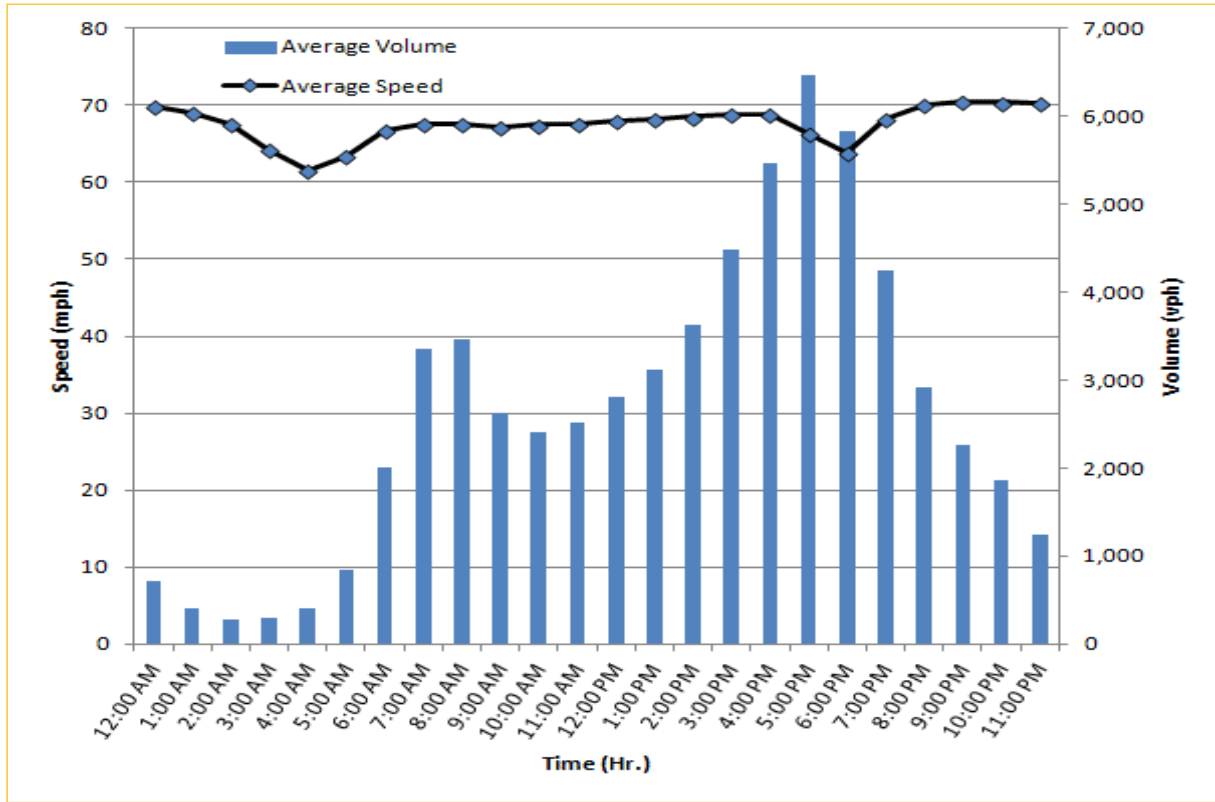


* Twelve-month average from April 1st, 2013 to March 31th, 2014.

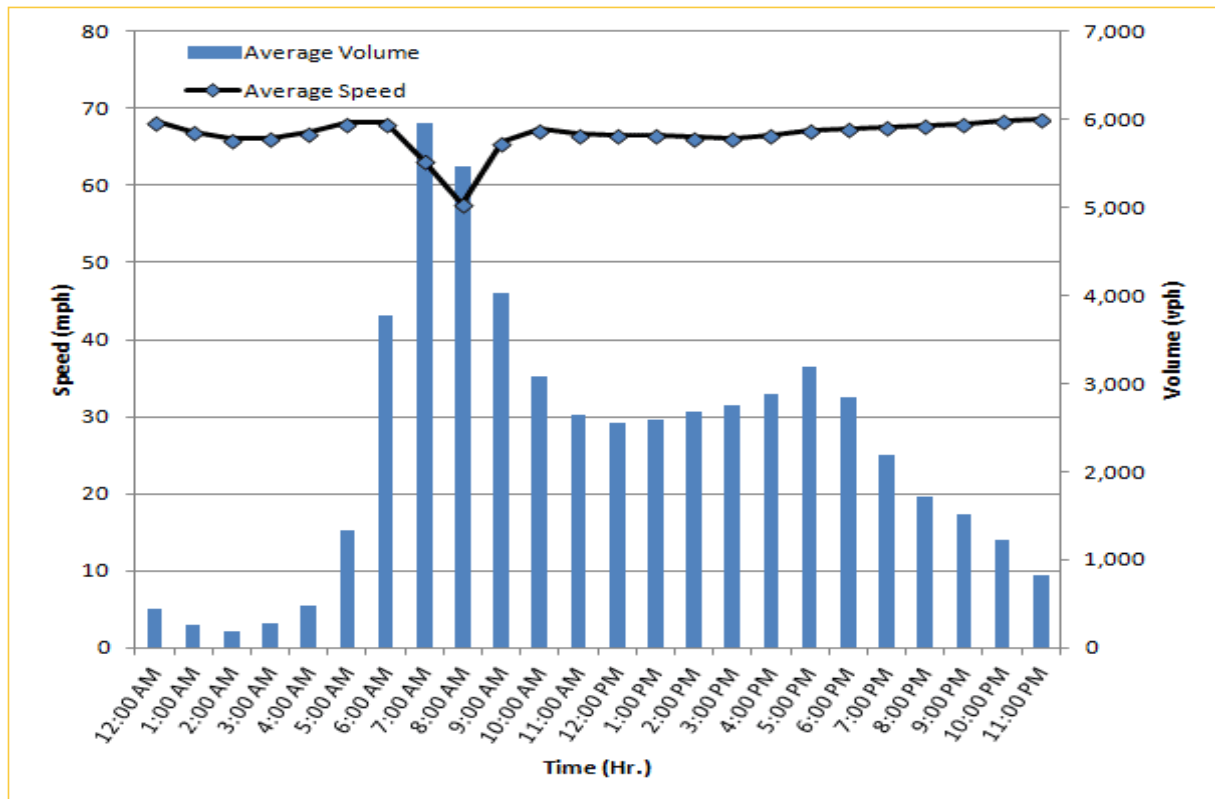
TRAVEL TIME RELIABILITY REPORT

Weekdays Speeds and Volumes by Time of Day*

I-75 Northbound: 5.4 Miles
From: West of SR 826
To: North of Florida's Turnpike



I-75 Southbound: 5.4 Miles
From: North of Florida's Turnpike
To: West of SR 826

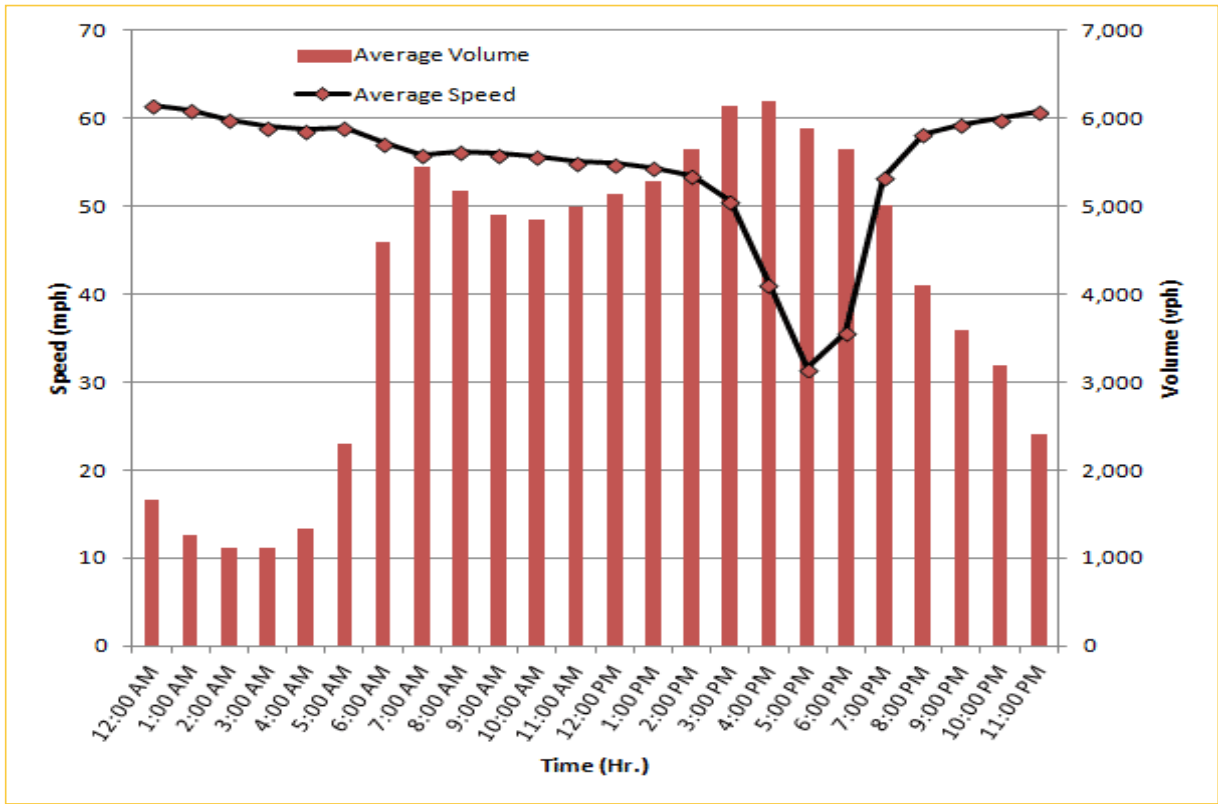


* Twelve-month average from April 1st, 2013 to March 31th, 2014.

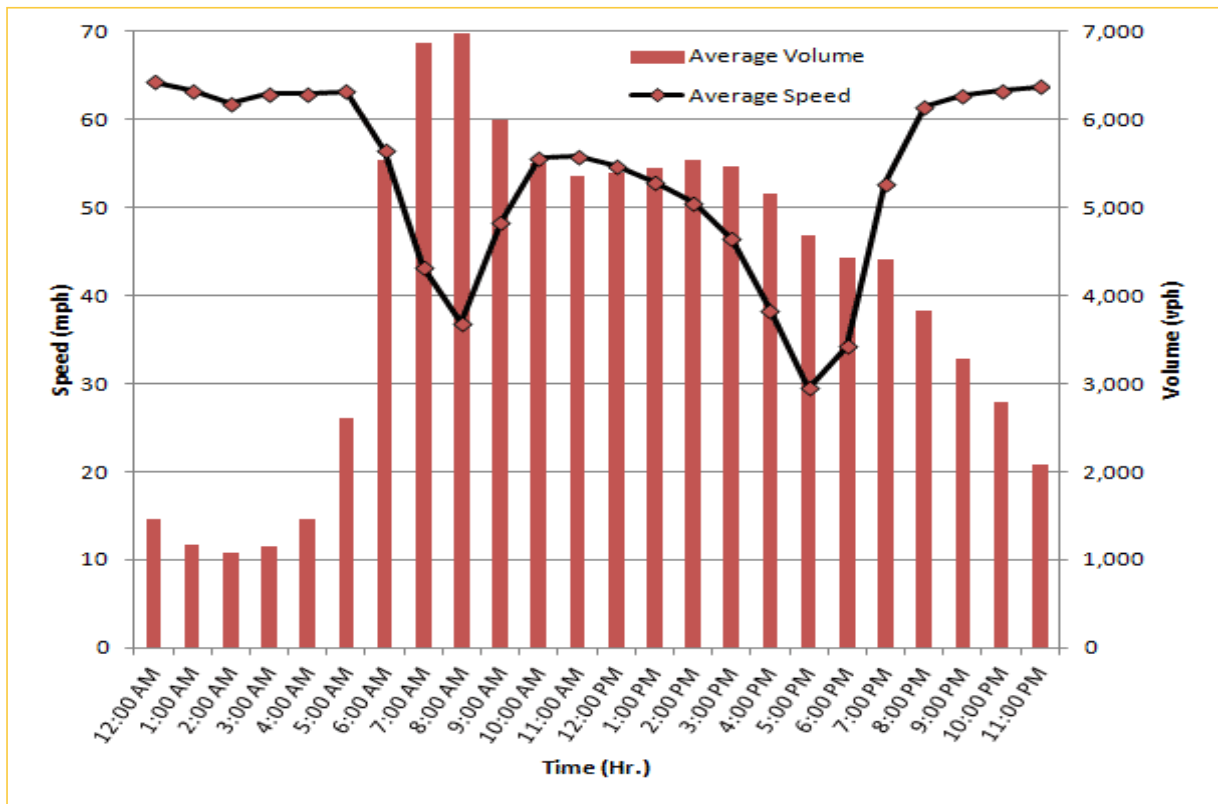
TRAVEL TIME RELIABILITY REPORT

Weekdays Speeds and Volumes by Time of Day*

SR 826 Northbound: 8.4 Miles
From: South of NW 25 Street
To: North of NW 154 Street



SR 826 Southbound: 8.4 Miles
From: North of NW 154 Street
To: South of NW 25 Street

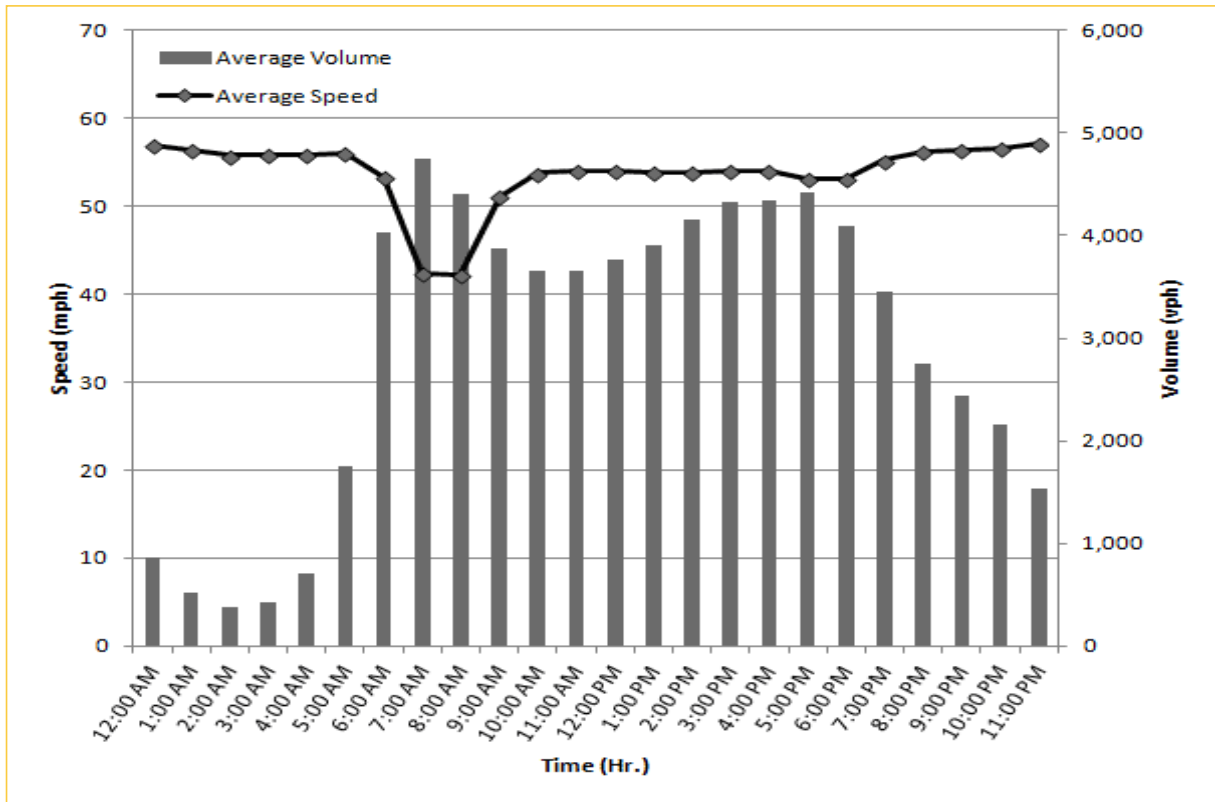


* Twelve-month average from April 1st, 2013 to March 31th, 2014.

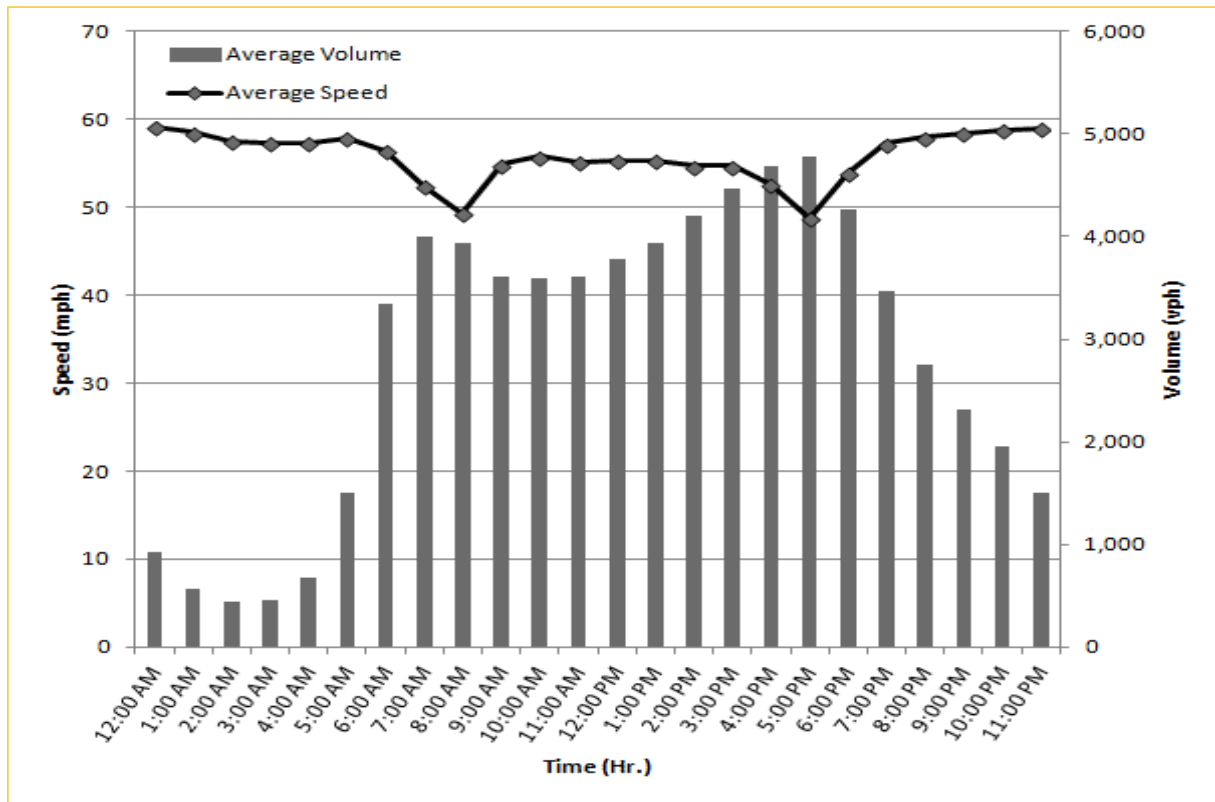
TRAVEL TIME RELIABILITY REPORT

Weekdays Speeds and Volumes by Time of Day*

SR 826 Eastbound: 7.1 Miles
From: West of NW 67 Avenue
To: East of NW 12 Avenue



SR 826 Westbound: 7.1 Miles
From: East of NW 12 Avenue
To: West of NW 67 Avenue

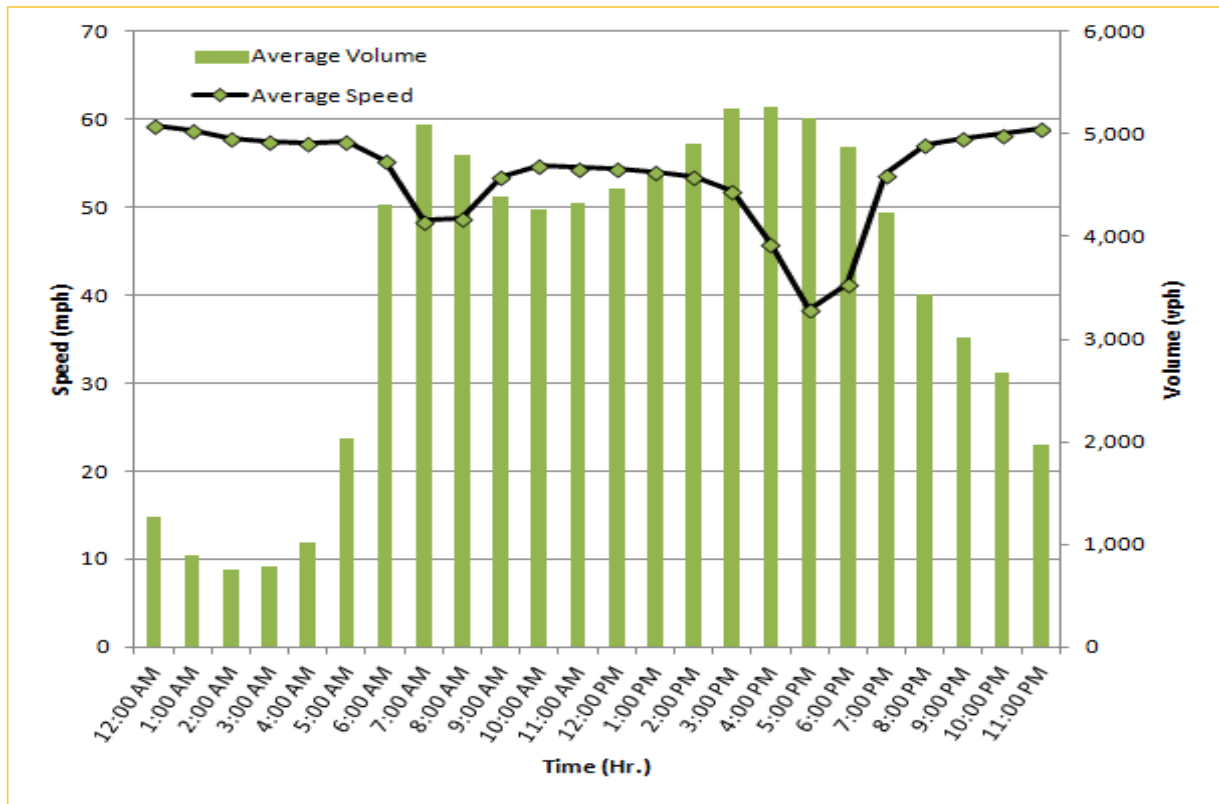


* Twelve-month average from April 1st, 2013 to March 31th, 2014.

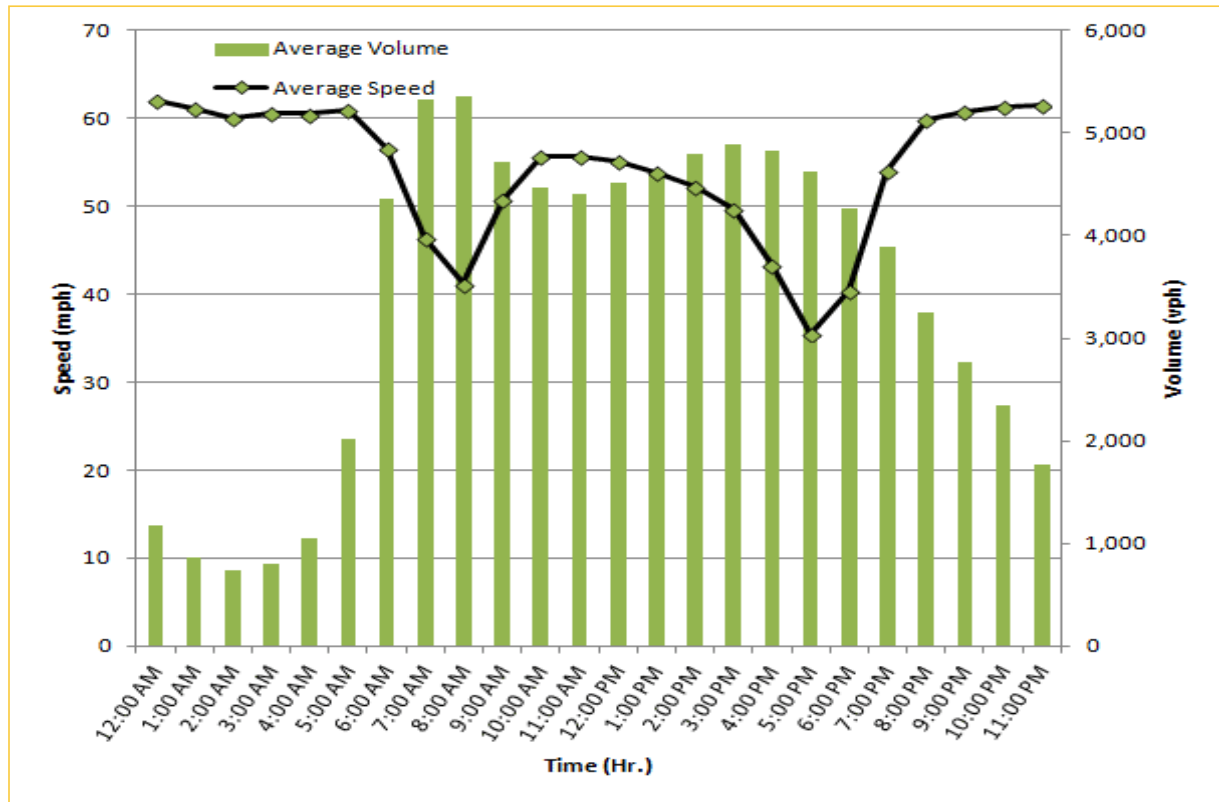
TRAVEL TIME RELIABILITY REPORT

Weekdays Speeds and Volumes by Time of Day*

SR 826 Northbound/Eastbound : 15.6 Miles
From: South of NW 25 Street
To: East of NW 12 Avenue

SR 826 Southbound/Westbound: 15.6 Miles
From: East of NW 12 Avenue
To: South of NW 25 Street

* Twelve-month average from April 1st, 2013 to March 31th, 2014.